

**University of New Mexico**  
**UNM Digital Repository**

---

Division of Mammals - Field Notes and Catalogs

Museum of Southwestern Biology

---

9-10-2010

# Mammalogy Class 2010 Field Notes

David Draper

Follow this and additional works at: [https://digitalrepository.unm.edu/msb\\_mammals\\_field\\_notes](https://digitalrepository.unm.edu/msb_mammals_field_notes)

---

## Recommended Citation

Draper, David. "Mammalogy Class 2010 Field Notes." (2010). [https://digitalrepository.unm.edu/msb\\_mammals\\_field\\_notes/274](https://digitalrepository.unm.edu/msb_mammals_field_notes/274)

This Article is brought to you for free and open access by the Museum of Southwestern Biology at UNM Digital Repository. It has been accepted for inclusion in Division of Mammals - Field Notes and Catalogs by an authorized administrator of UNM Digital Repository. For questions or technical help with UNM's Digital Repository, please contact [disc@unm.edu](mailto:disc@unm.edu).

David L Draper  
2010

Field Journal

9/10 - 9/12  
(2010)

[10-12, September 2010]

1.) Road Log - From Albuquerque, take I-25 North past Santa Fe and onto Highway 285. Take Highway 285 from Española, north toward the Colorado border. Take a left on "Rd C" and follow the path for several miles (~10 mi).

2.) Participant list - Brooks Kohli (BAK)

Christina Frank (CMF)

Carrie Crabtree (CAC)

Alexandra Hansell (AWH)

Toby Weisenhaus (TJW)

Matthew Jones (MAJ)

Ben Stanley (BDS)

David Draper (DD)

Meredith Williams (MNA)

Vanessa Martiny (VLM)

Hayce Bell (KCB)

Clare Steinberg (CS)

Jonathan Schmidt (JLS)

Mario Valencia (MV)

Joseph Cook (JAC)

Jason Maloney (JLM)

Carville Padilla (CP)

3.) General Site Description - The sight was primarily a riparian zone. The plant species were as follows: Rhus aromatica, Populus angustifolia, Tilia sp., Picea pungens, Pinus ponderosa, Salix sp., Alnus incana, Rosa sp., Cornus sericea, + Juniperus scopulorum. The percent of plant coverage was ~60%. The north face was dry + very rocky. The south face had much more vegetation present. The height of understory was ~1m-2m and the overstory was ~10m.

4.) Designated Locality: NM: Rio Arriba Co.; Rio de los Pinos; 3 Km W of San Miguel. 35.9576°N, 106.177°W  
e lev. 2551m.

## Field Journal

10-12, Sep. 2010

5.) Weather: The morning temperature was cold with an average of about  $40^{\circ}\text{F}$ . The afternoon had a high of about  $83^{\circ}\text{F}$ . The weather was very clear with little cloud cover in the afternoon. At night, clear skies and no moon helped us yield a large amount of rodents.

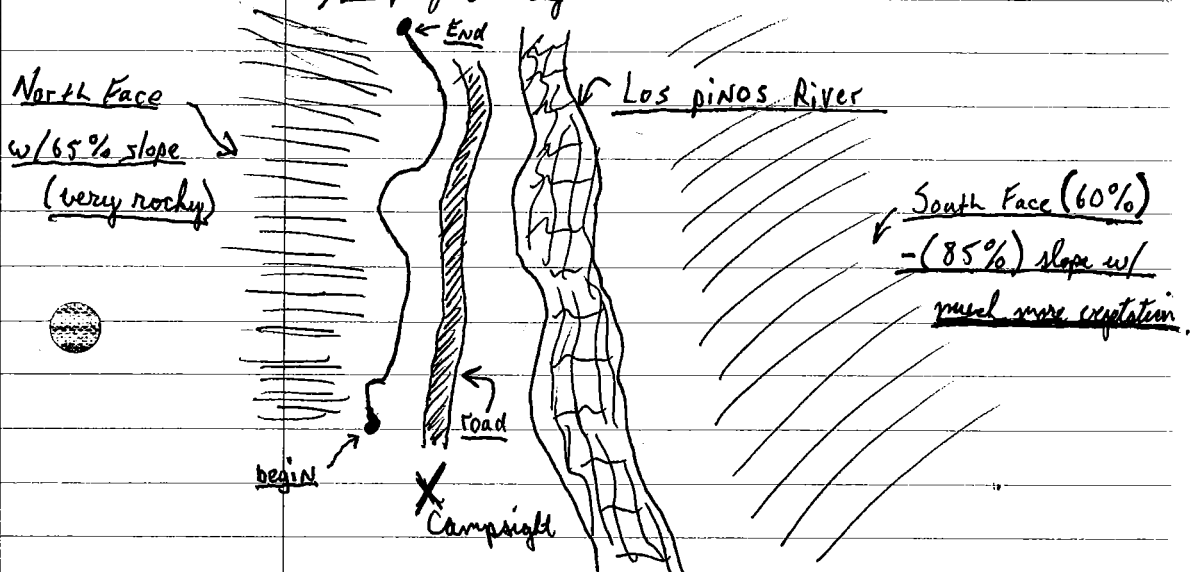
6.) Trapline Information - Name of line: DLD-MNU-1.

Name of partner: Meredith Williams

Number + type of traps: we set up 66 sherman traps, Sep. 10 evening + overnight. 42 traps during the day on Sep. 11, + 66 traps set overnight on Sep. 11.

Description of trapline: Our trapline hugged the main road to our campsite with a 65% slope (rocky) to the north + a river to the south. The trapline covered a very diverse range of terrain, from shady tree coverage, to exposed plantless terrain. (30% canopy)

7.) Map of Locality:



Field Journal

10-12, Sep. 2010

8.) Trap Tallies:

11 September (morning): 26 total; 16 Peromyscus,  
7 Neotoma, + 3 Tamias quadrivittatus

\* trap success: 39%

11 September (afternoon): 1 total; 1 Spermophilus  
lateralis \* trap success: 2%

12 September (morning): 5 total; 3 Neotoma,  
1 Tamias quadrivittatus, 1 Microtus

9.) Species List:

Peromyscus maniculatus

Tamias quadrivittatus

Neotoma mexicana

Microtus longicaudus

Microtus pennsylvanicus

Spermophilus lateralis

Myotis volans

Eptesicus fuscus

Lasiurus noctivagans

## Field Journal

Sept. '10] 1) Road Log - I-25 South from UNM campus for 292.8 Km, turn onto NM-265 / state route 543 toward Hotel, NM for 2.08 Km. Continue on this rd for ~~80.4 Km~~ 74.4 Km + turn onto US 180 E/N Gold Ave for 1.96 Km to Deming. Turn onto I-10 W for 113.44 Km + turn onto NM-3385 for 84.32 Km. (Co Rd 0004 (8.8 Km) + then 0002 / Heronimo Trail for 1.6 Km. Camp was on the south side of road.

### 2) Participant List -

Brooks Kohli (BAK)	Kayne Bell (KCB)
Christina Frank (CMF)	Joe Cook (JAC)
Alexandra Hannell (AWH)	Sylvia Brodner (SB)
Sara Pesko (SMP)	Jordan Jarrell (GJ)
Daria Draper (DLA)	Jon Durwan (JD)
Camille Padilla (CEP)	Robert Nofchissey (RN)
Stephen Webb (SW)	Andrew Hope (AH)
Kat Schroeder (KS)	Lydia Zepin (LZ)
Meredith Williams (MNW)	Steve MacDonald (SM)
Carrie Crabtree (CAC)	Marjorie McConnell (MM)
Mario Valencia (MAV)	Matthew Jones (MRJ)
Clare Steinberg (CES)	

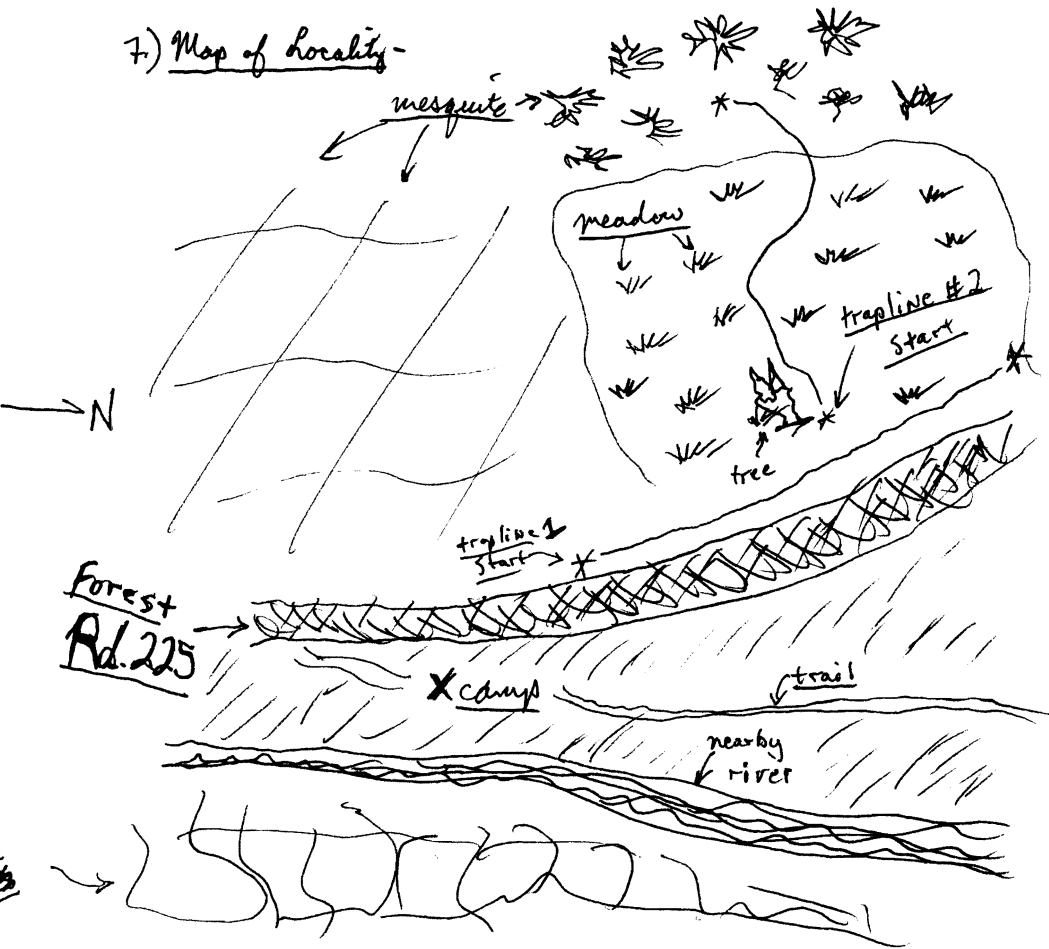
3) General Site Description - Riparian area w/ dense vegetation in some areas. Juniper + oak woodlands, grasslands w/ blue grama. 15m from a rocky stream, wild grapes, madrone scrub. Overstory cover 70% w/ an understory of 40%, soil + bedrock 40%. One grass found was sedge carex. Perovskia grass as well

4) Designated Locality - NM: Hidalgo Co; Polevicio Mtns, 31.51663°N, 108.98533°W, Elev. 1671m

5) Weather - full moon on first night, partial cloud cover w/ no precipitation. Temp was about 60°F. At night, the weather was still pretty clear w/ a lot of moonlight. ~60°F + 95°F (day).

6) Trapline Information - Overstory was about 60%, understory was 20%. About 50% herbaceous w/ the same percentage of bare soil/rock. About 30% of the line was litter layer. There was no slope on our trapline. Our 2nd trapline had the following percentages: Overstory (10%), understory (20%), Herbaceous (40%), Bare soil/rock (50%), + a litter layer depth (10%). There was about a 20% slope.

7) Map of locality -



8.) Trap Tallies - We set 40 Sherman traps and caught nothing on our first trapline (24 Sept 2010). For our second trapline, we set 20 Shermans, 20 snap traps (25 Sept, 2010) We had a 0% success rate for our traplines.

9.) Species List -

*Spermophilus variegatus*

*Chaetodipus pennellii*

*Neotoma albigula*

*Peromyscus boylii*

*Mephitis mephitis*

*Thomomys bottae*

*Chaetodipus hispidus*

## Field Journal

(29-31 Oct. 2010)

1.) Road Log - Go south on I-25 from UNM for 129 mi. Take exit 115 + turn left (heading East), crossing over I-25. After crossing, take a right (heading south) on El Camino Real IHC Highway 2. Continue for 12 miles until taking a right on Forest Rd. 225. Camp ~ 2 mi down the road.

### 2.) Participant List -

Brooks Kohli (BAK)

Jason Thomas (JT)

David Draper (DLB)

Marjorie McConnell (MM)

Matthew Jones (MJJ)

Robert Nofchissey (RN)

Stephen Webb (SW)

Joe Cook (JAC)

Meredith Williams (MNA)

Alexandra Hunsell (AWH)

Kat Schroeder (KS)

Toby Weisenborn (TJW)

Mario Valencia (MAV)

Sophias Thompson (SST)

Sharon Wier (SBW)

Sara Pesko (SMP)

3.) General Site Description - Yucca, cholla cactus, scrub, populus, alligator juniper at and close to campus. Very arid scrub w/ dry desert climate. Cliffs and mountains surrounded the general area of our compute. Dry arroyos and river beds surrounded the western region around our compute. Primarily desert grassland w/ mesquite.

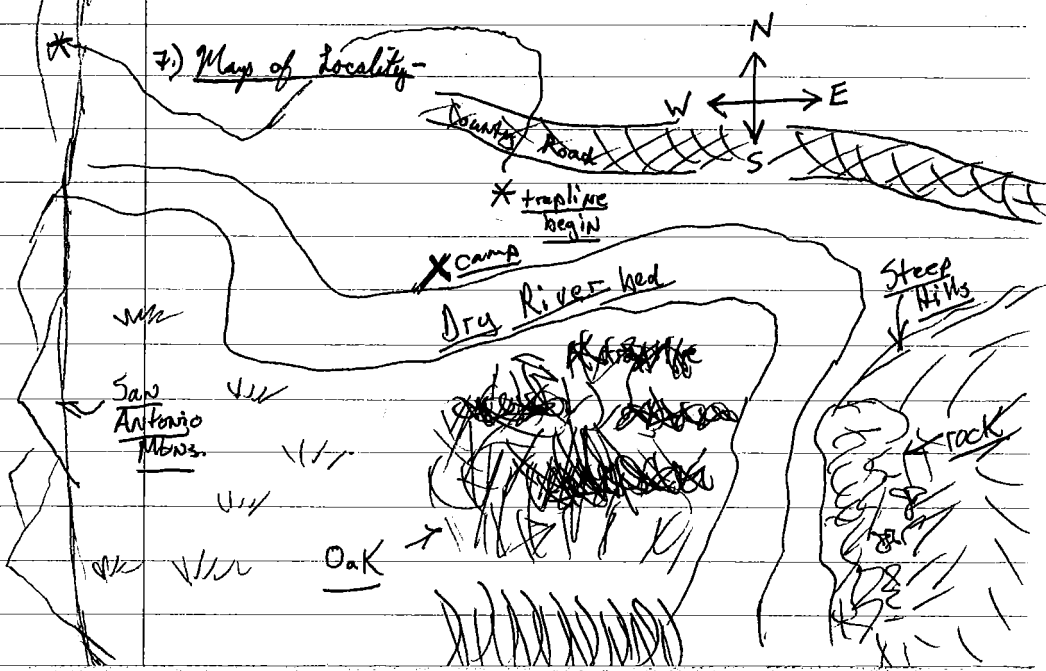


4.) Designated Locality - NM: Socorro Co; FR 225; 5.4 Km S, 36 Km W of Socorro; 33.54258°N, 107.28252°W; Elev. 1751M

5.) Weather - very clear w/ ~ 20% cloud coverage. Daytime temperatures were around 78°F and nighttime temps reaching 36°F. Winds were approximately 5 mph in the day w/ no wind (~1-2 mph) during the night.

6.) Trapline Information - Matthew and myself (David Draper) set 70 Shermans, 30 rat traps, + 10 museum specials. Our trapline name was MRS/DLD. Our trapline started about 20m North of our campsite. We primarily targeted K-rat mounds by placing 2 shermans and one snap trap at each mound. If mounds weren't present in an area, we targeted understory bushes such as mesquite. Dry arroyos and riverbanks were seen along the south-western portion of our trapline.

7.) Map of Locality



8) Trap Totals - For our trapline, we caught a total of 5 Dipodomys spectabilis, 3 Dipodomys merriami, and 2 Onychomys arvicola. The spectabilis were mainly caught w/ snaptraps + the others were caught using Shermans (Oct. 30<sup>th</sup> morning). Our trap success was 9.1%. On the second day (Oct. ~~29~~ 31 morning) 1 Dipodomys merriami, 1 Neotoma albigula, + 1 Onychomys torridus w/ 66 Shermans set. Our trap success for this day is 4.5%.

9) Species List -

Peromyscus boylii  
Peromyscus maniculatus  
Neotoma albigula  
Perognathus flavus  
Onychomys arvicola  
Dipodomys merriami  
Dipodomys spectabilis  
Thomomys bottae  
Chrotodipus peromyscoides  
Sylvilagus auduboni  
Peromyscus eremicus

TRAPLINE DATA SHEET

30 Oct 2010

Locality: NM: Socorro Co; ~~Socorro~~; FR 225, 54 Km S, Biome: Desert grassland w/ mesquite  
 Lat: 32.54258°N Long: 107.23252°W Elev: 1751 M 36 Km W of Socorro  
 Date: 29 Oct - 31 Oct 2010 Project/Collectors: MAJ, OLD  
 Notes (Moon; weather; temp.):

		Trapline No. _____		
	Cover Class	Height/units	Dominant Plant Species	
Overstory:	0 1 2 3 4 5 6 7 8 9	_____	Cholla cactus, yucca cactus, mesquite,	
Understory:	0 1 2 3 4 5 6 7 8 9	2m	Ephedra sp., blue grama grass,	
Herbaceous:	0 1 2 3 4 5 6 7 8 9	_____	_____	
Bare soil/rock:	0 1 2 3 4 5 6 7 8 9	_____	_____	
Litter layer:	0 1 2 3 4 5 6 7 8 9	_____	_____	
Slope:	3 %	_____	_____	
		Captures:		
Trap #:	NK Number	Species	Ecological Data	
70 sherman		Dipodomys spectabilis		
30 Est traps		Dipodomys spectabilis		
10 museum specimens		Dipodomys spectabilis		
		Dipodomys spectabilis		
		Dipodomys spectabilis		
		Dipodomys <del>merriami</del>		
		Dipodomys merriami		
		Dipodomys merriami		
		Onychomys <del>torquatus</del> arenicola		
		Onychomys <del>torquatus</del> arenicola		

		Trapline No. _____	31 Oct 2010	
	Cover Class	Height/units	Dominant Plant Species	
Overstory:	0 1 2 3 4 5 6 7 8 9	_____	_____	
Understory:	0 1 2 3 4 5 6 7 8 9	_____	_____	
Herbaceous:	0 1 2 3 4 5 6 7 8 9	_____	_____	
Bare soil/rock:	0 1 2 3 4 5 6 7 8 9	_____	_____	
Litter layer depth:	0 1 2 3 4 5 6 7 8 9	_____	_____	
Slope:	_____ %	_____	_____	
		Captures:		
Trap #:	NK Number	Species	Ecological Data	
66 sherman		Dipodomys merriami	} sherman	
		Onychomys torquatus		
		Neotoma albigula		

Cover Classes

0 = 0-9%; 1 = 10-19%; 2 = 20-29%; 3 = 30-39%; 4 = 40-49%; 5 = 50-59%; 6 = 60-69%; 7 = 70-79%; 8 = 80-89%; 9 = 90-100%