

11-15-2012

# Colonia Population Estimation

Daren Ruiz

Follow this and additional works at: <https://digitalrepository.unm.edu/bber>

---

## Recommended Citation

Ruiz, Daren. "Colonia Population Estimation." (2012). <https://digitalrepository.unm.edu/bber/7>

This Presentation is brought to you for free and open access by the Bureau of Business and Economic Research at UNM Digital Repository. It has been accepted for inclusion in BBER Publications by an authorized administrator of UNM Digital Repository. For more information, please contact [disc@unm.edu](mailto:disc@unm.edu).



Bureau *of* Business &  
Economic Research

# Colonia Population Estimation

Data Users Conference

2012 November 15

Daren Ruiz, MA

Bureau of Business and Economic Research  
MSC06 3510  
1 University of New Mexico  
Albuquerque NM, 87131-0001

- How do we count colonia populations?
- How do we estimate the socioeconomic and housing characteristics of colonia populations?

## 2010 Census Data

- Conducted on every person
- Conducted every 10 years
- Reported at the Block level
- Limited number of questions
  - ‘Short form’
  - Population counts
  - Basic demographic data

## 2006-2010 American Community Survey 5-Year Estimates

- Conducted on a 1 in 6 sample
- Conducted every year
- Reported at the Block Group level
- Greater number of questions
  - ‘Long form’
  - Population counts
  - Detailed demographic, economic, and housing estimates
  - Margin of Error

## 2010 Census Data

- Population Data
  - Total population counts
  - Number of households
  - Population living in households
- Housing Data
  - Total housing unit counts
  - Vacancy status
  - Tenure

## 2006-2010 American Community Survey 5-Year Estimates

- Population Estimates
  - Median household income
  - Ratio of income to poverty
  - Poverty status of persons
- Detailed Housing Estimates
  - Units in structure
  - Year structure built
  - House heating fuel

**COLONIA**

**POPULATION**

**ESTIMATION**

**PROCESS**

Define



Locate



Overlay  
Census  
Blocks



Select Blocks  
that Capture  
the Colonia



Tabulate  
Block  
Population

# Many Colonia Definitions

Define



- U.S. Department of Housing and Urban Development
- U.S. Environmental Protection Agency
- U.S. Department of Agriculture Rural Development
- Common usage, i.e. Pajarito Mesa

# U.S. Department of Housing and Urban Development

Define

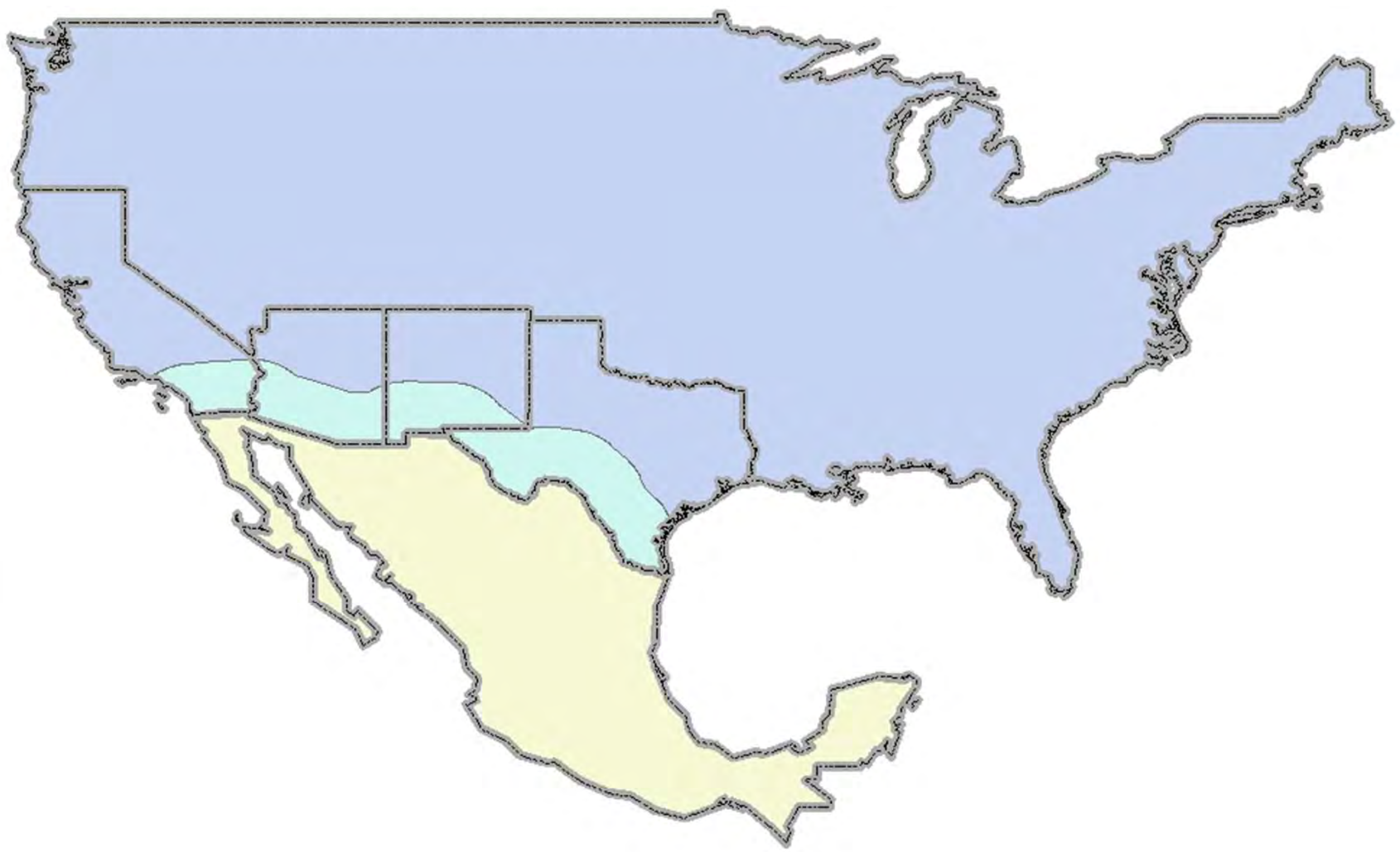


- Must be in Arizona, California, New Mexico, or Texas
- Must be within 150 mile of the U.S.-Mexico border
- Must not be within a metropolitan statistical area with a population greater than 1 million
- Must lack:
  - Potable water supply
  - Adequate sewage system
  - Decent, safe, and sanitary housing
- Must have existed before 1990 November



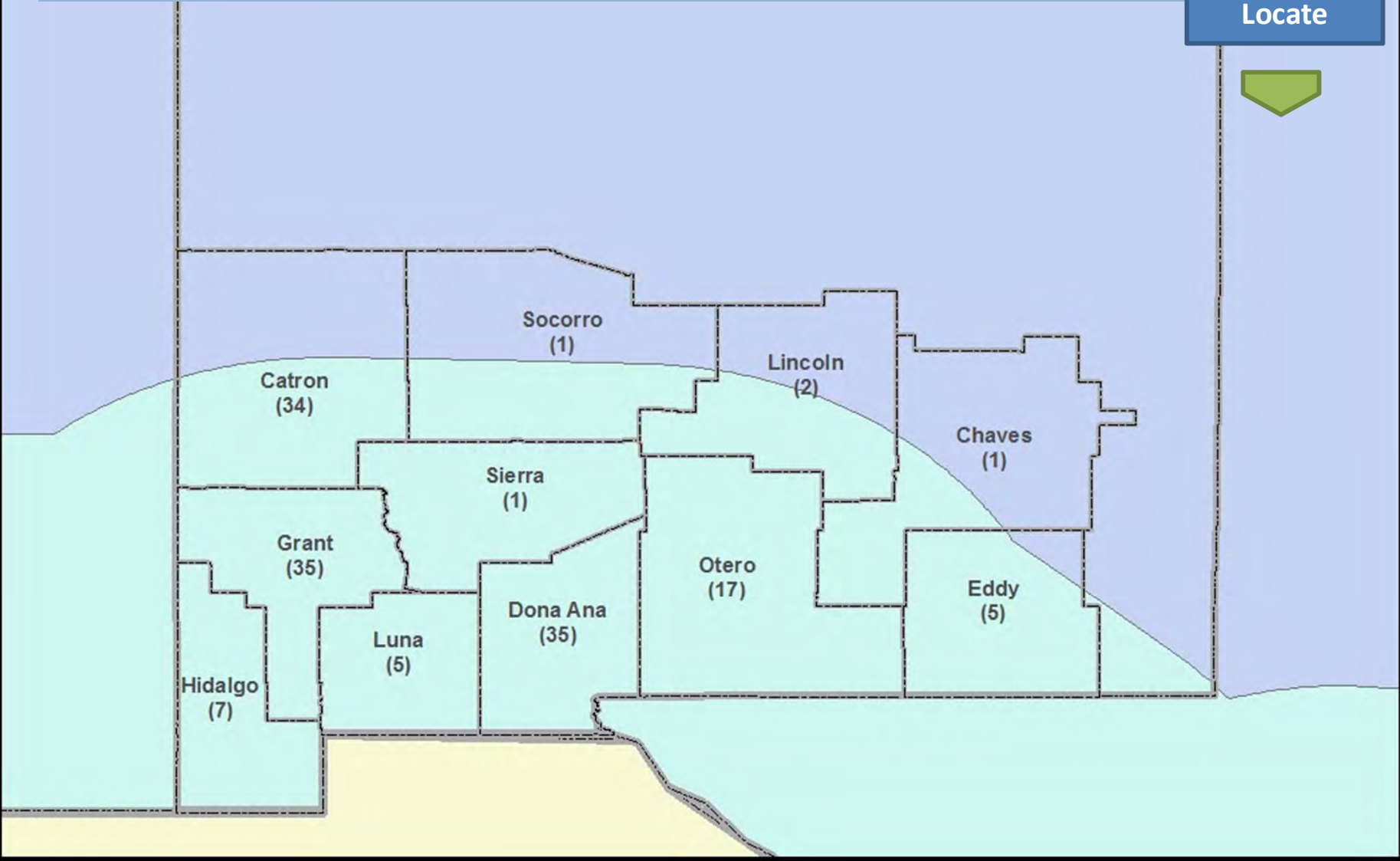
# HUD Colonia Definition

Define



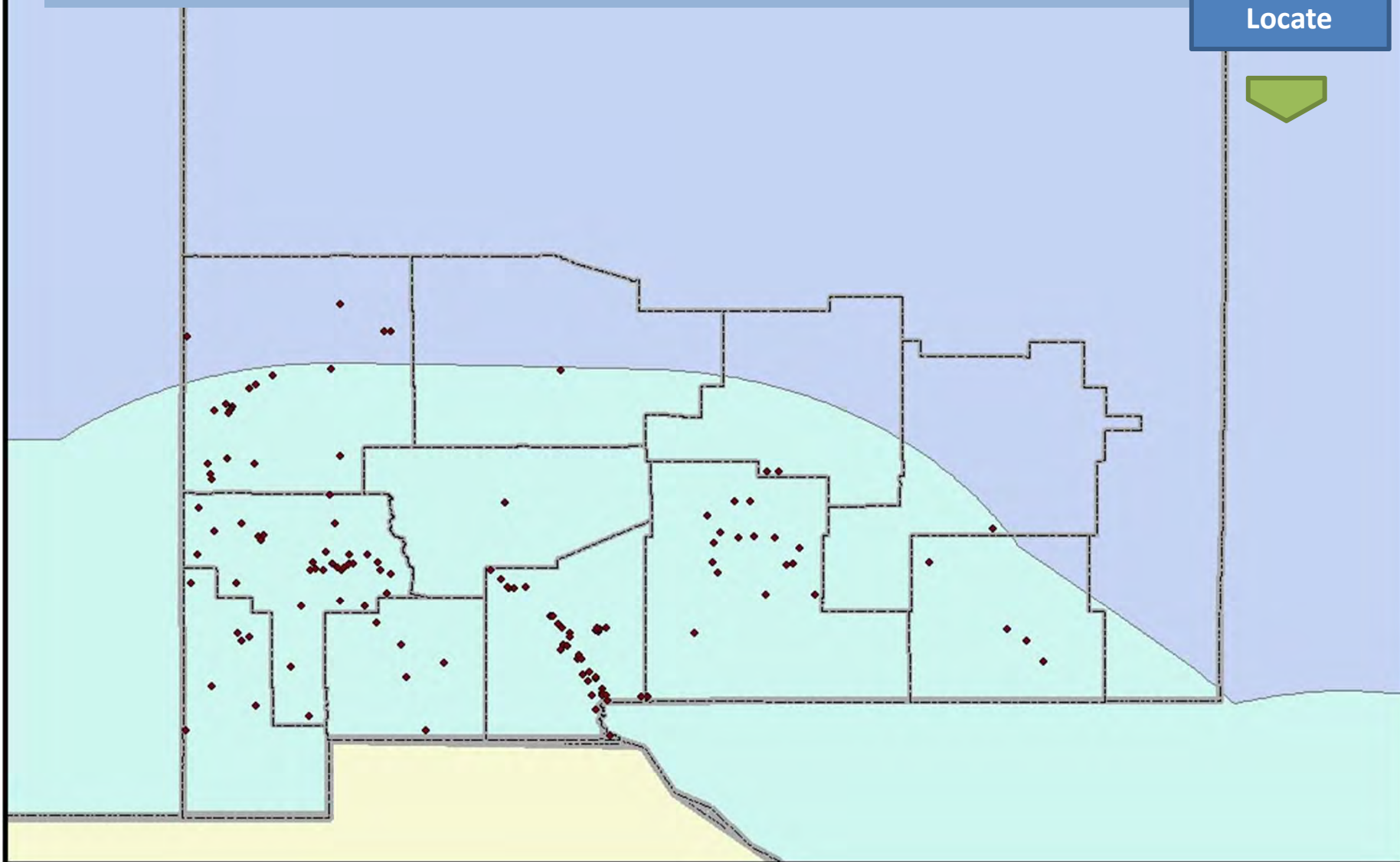
# County Name (Number of Colonias)

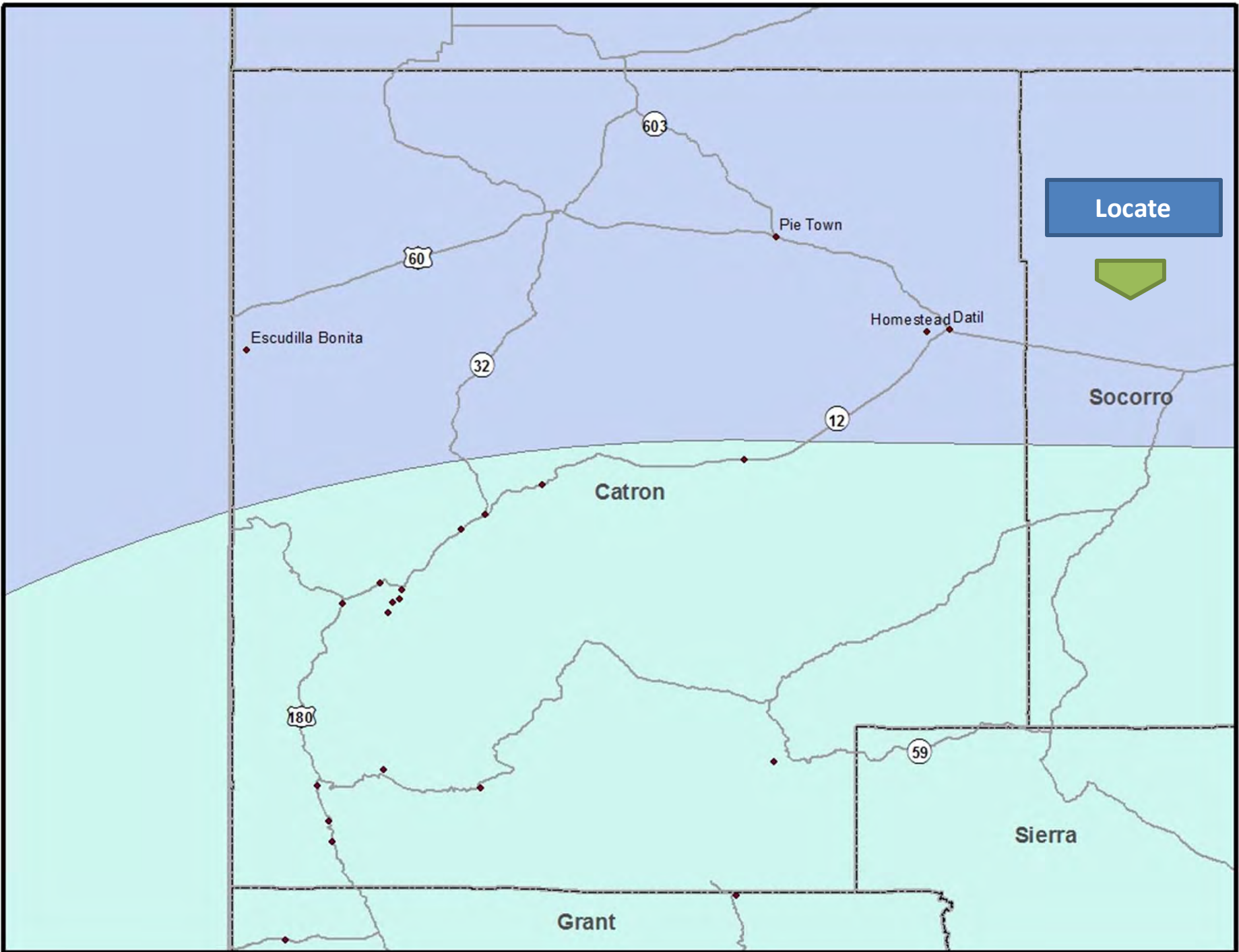
Locate



# Colonia Locations NMSU Study

Locate





Locate



Socorro

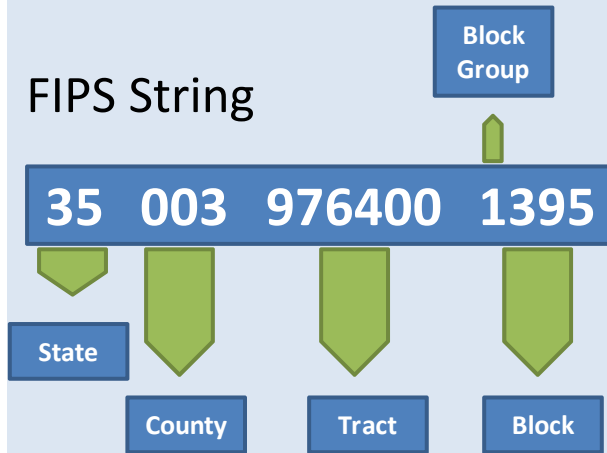
Catron

Sierra

Grant

# Pie Town Total Population

FIPS String



Candidate Colonia Blocks	Total Population
350039764001369	6
350039764001370	5
350039764001371	2
350039764001372	2
350039764001373	0
350039764001375	0
350039764001394	14
350039764001395	0
350039764001396	9
350039764001397	0
350039764001398	0
350039764001399	0
350039764001400	1
350039764001450	0
350039764001451	0
350039764001946	0
350039764001947	0
350039764001948	0
350039764001956	3
350039764001957	0
350039764001958	2
<b>Total</b>	<b>44</b>

Tabulate  
Block  
Population

**COLONIA**

**SOCIOECONOMIC**

**AND**

**HOUSING**

**CHARACTERISTIC**

**ESTIMATION**

**PROCESS**

Select Block  
Groups



Tabulate  
Block Group  
Population



Determine  
Reliability



# Pie Town Total Housing Units

Select Block  
Groups

Colonia Name	Pie Town
Block Population	44
Block Group	Catron Co., CT9764, BG1
Block Group Population	1,923
% Block Population of Block Group Population	2%
Total Housing Units	1,701

Tabulate  
Block Group  
Population

Determine  
Reliability

## Limitations:

- Population counts are only as accurate as census counts.
- Colonias may neighbor each other, but their extents can not be delineated through aerial photography.
- The colonia may be incorporated or a Census Designate Place and the method may produce different data and/or estimates.
- Reliability of colonia socioeconomic and housing characteristics varies greatly.

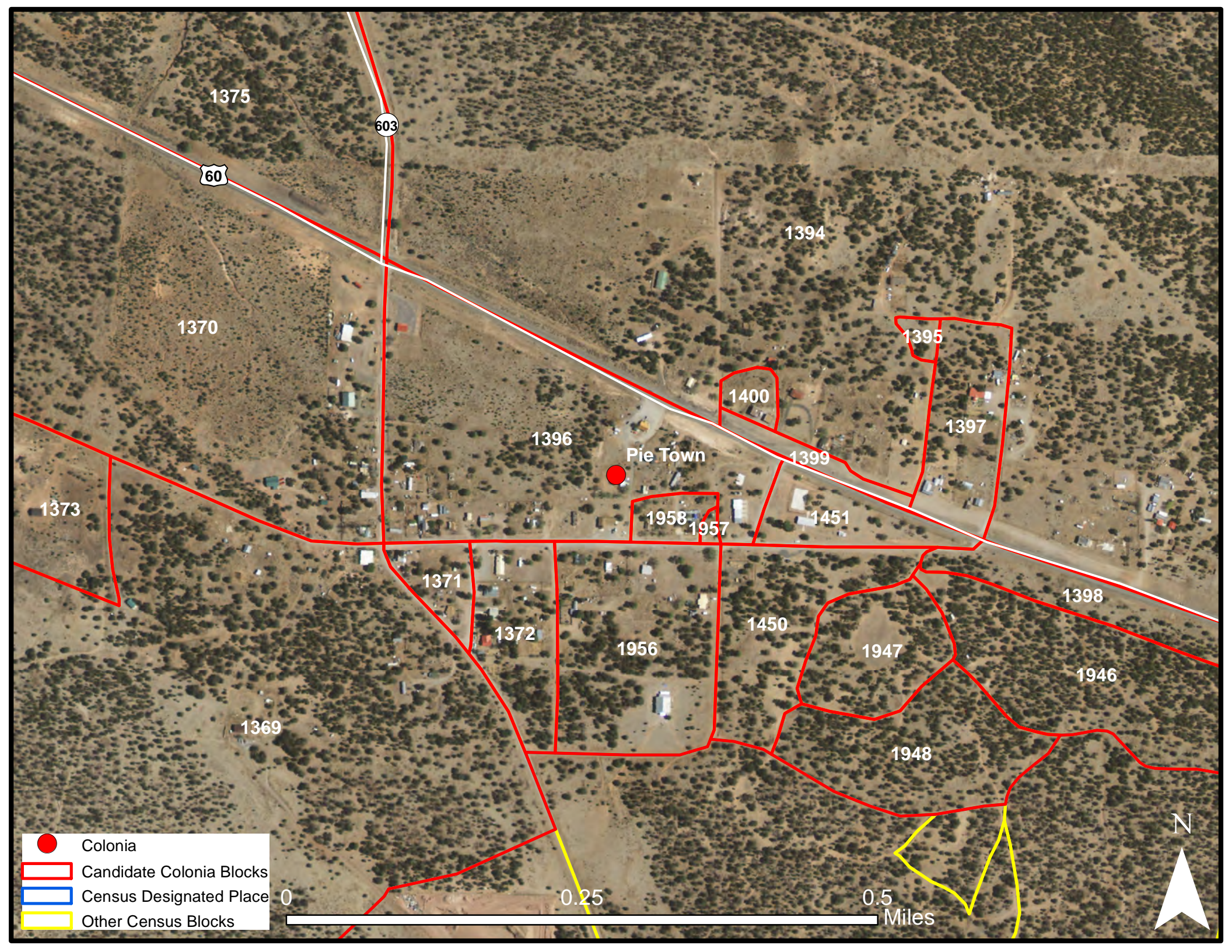


## Useful links

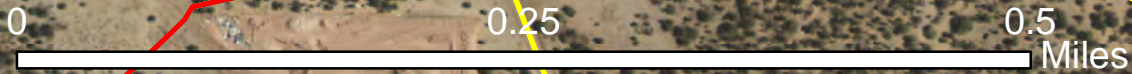
- <http://www.hud.gov/local/nm/groups/coloniasnm.cfm>
- [http://nmdfa.state.nm.us/Local\\_Government.aspx](http://nmdfa.state.nm.us/Local_Government.aspx)
- <http://donaanacounty.org/health/colonias/>
- <http://bber.unm.edu/colonias.htm>

**Thank you.**

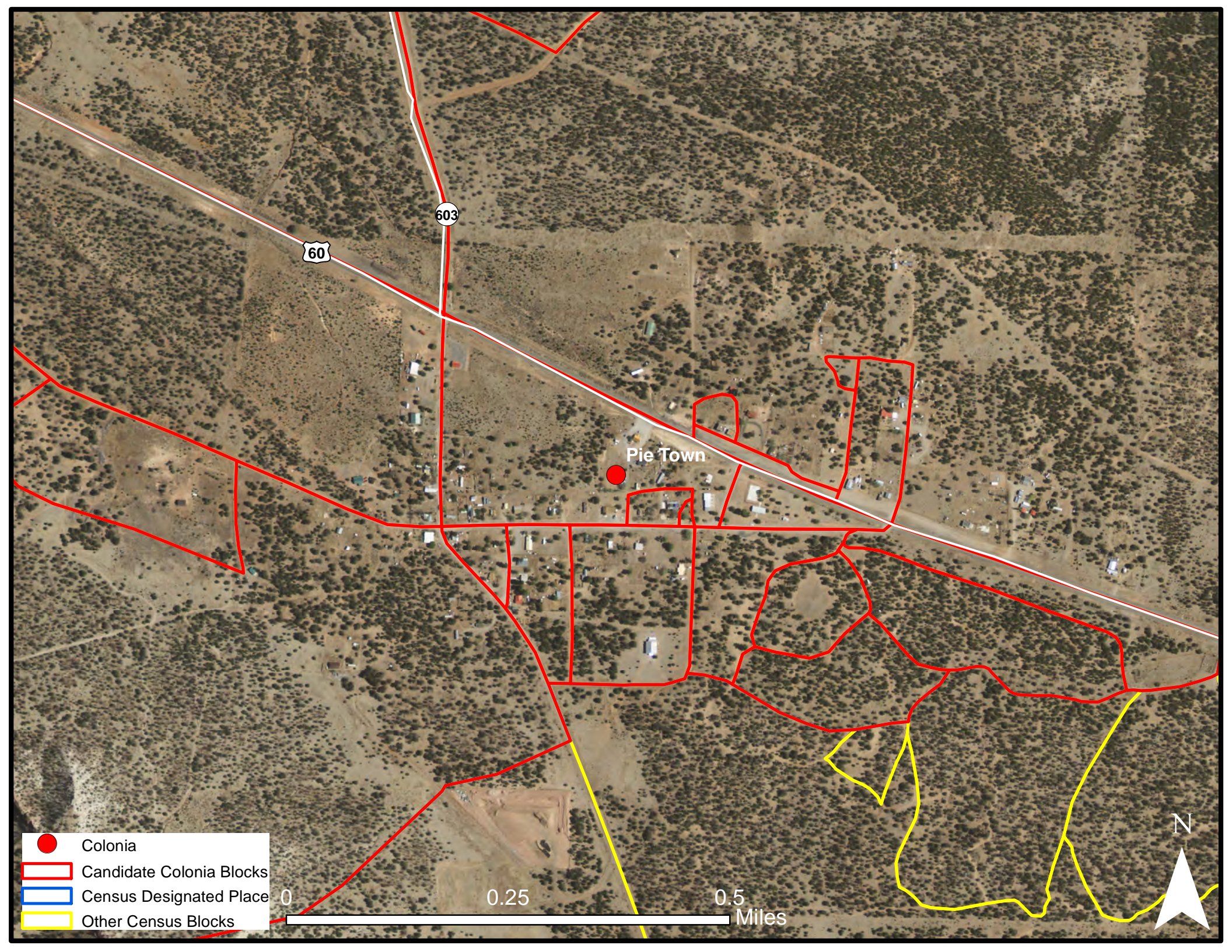




- Colonia
- ▭ Candidate Colonia Blocks
- ▭ Census Designated Place
- ▭ Other Census Blocks







60

603

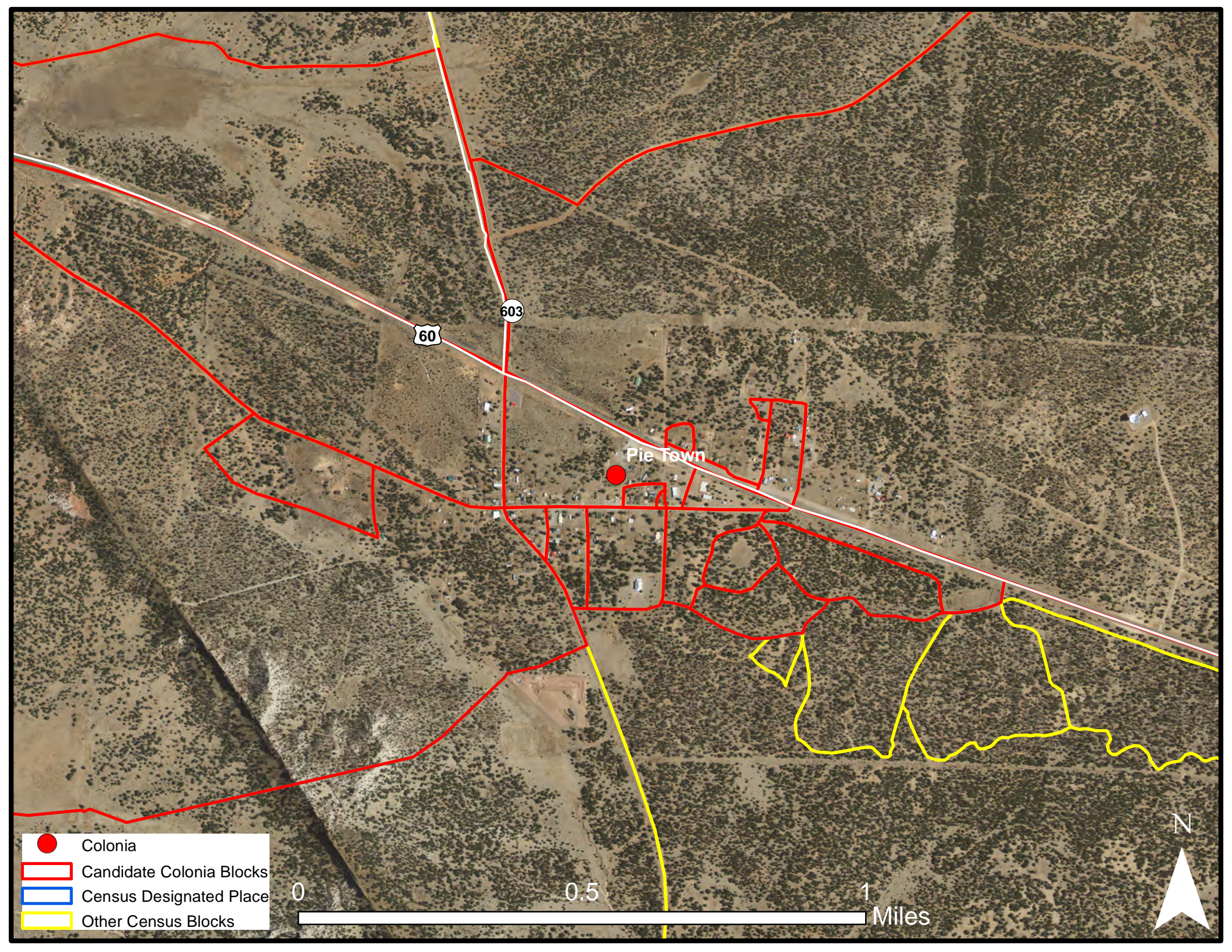
Pie Town

- Colonia
- ▭ Candidate Colonia Blocks
- ▭ Census Designated Place
- ▭ Other Census Blocks

0 0.25 0.5 Miles





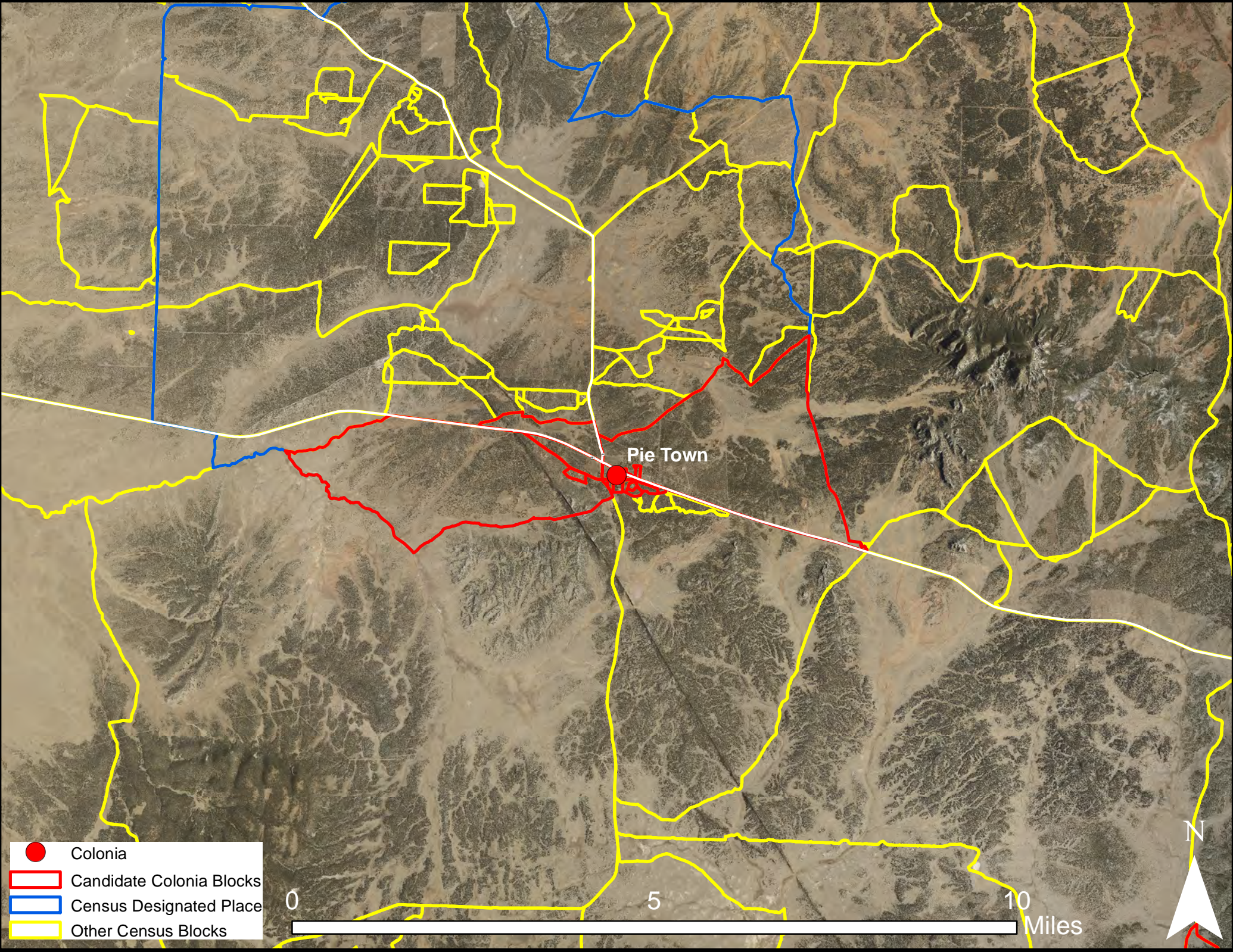


- Colonia
- ▭ Candidate Colonia Blocks
- ▭ Census Designated Place
- ▭ Other Census Blocks

0 0.5 1 Miles







- Colonia
- ▭ Candidate Colonia Blocks
- ▭ Census Designated Place
- ▭ Other Census Blocks

0 5 10 Miles

