

12-17-2010

The Cultural Evolution of Rio Arriba County

J. Jarrett García

Moises Gonzales

José A. Rivera

Follow this and additional works at: https://digitalrepository.unm.edu/crs_rio_chama

Recommended Citation

García, J. Jarrett; Moises Gonzales; and José A. Rivera. "The Cultural Evolution of Rio Arriba County." (2010).
https://digitalrepository.unm.edu/crs_rio_chama/11

This Article is brought to you for free and open access by the Center for Regional Studies at UNM Digital Repository. It has been accepted for inclusion in The Rio Chama Basin: Land, Water and Community by an authorized administrator of UNM Digital Repository. For more information, please contact disc@unm.edu.



“The Cultural Evolution of Río Arriba County”

Project Investigator: Jarrett Garcia, CRP Graduate Student,
University of New Mexico

Department Sponsor: Community and Regional Planning Program,
School of Architecture and Planning

Faculty Mentors: Moises Gonzales and José Rivera

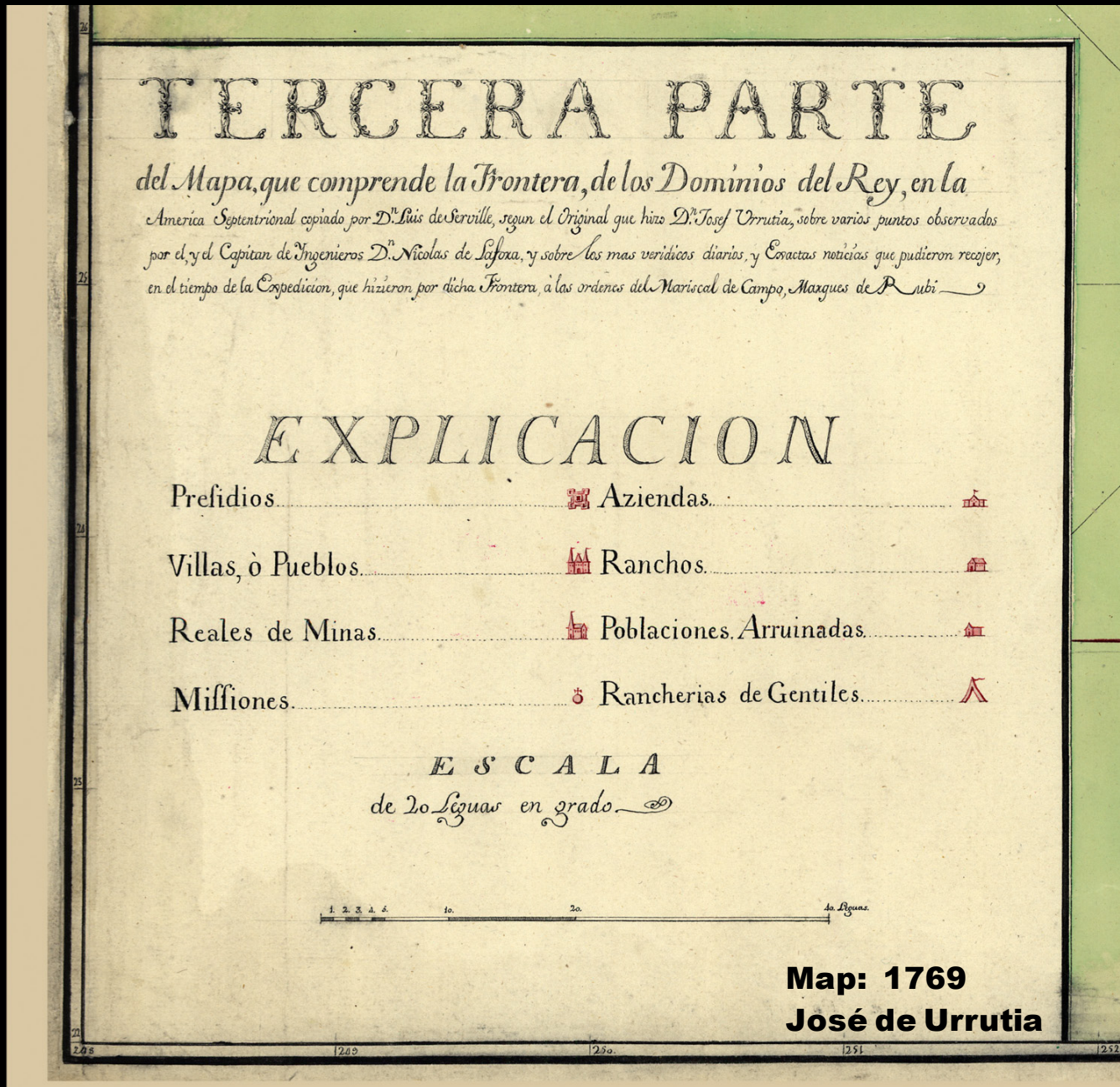
Funding Source: UNM Center for Regional Studies

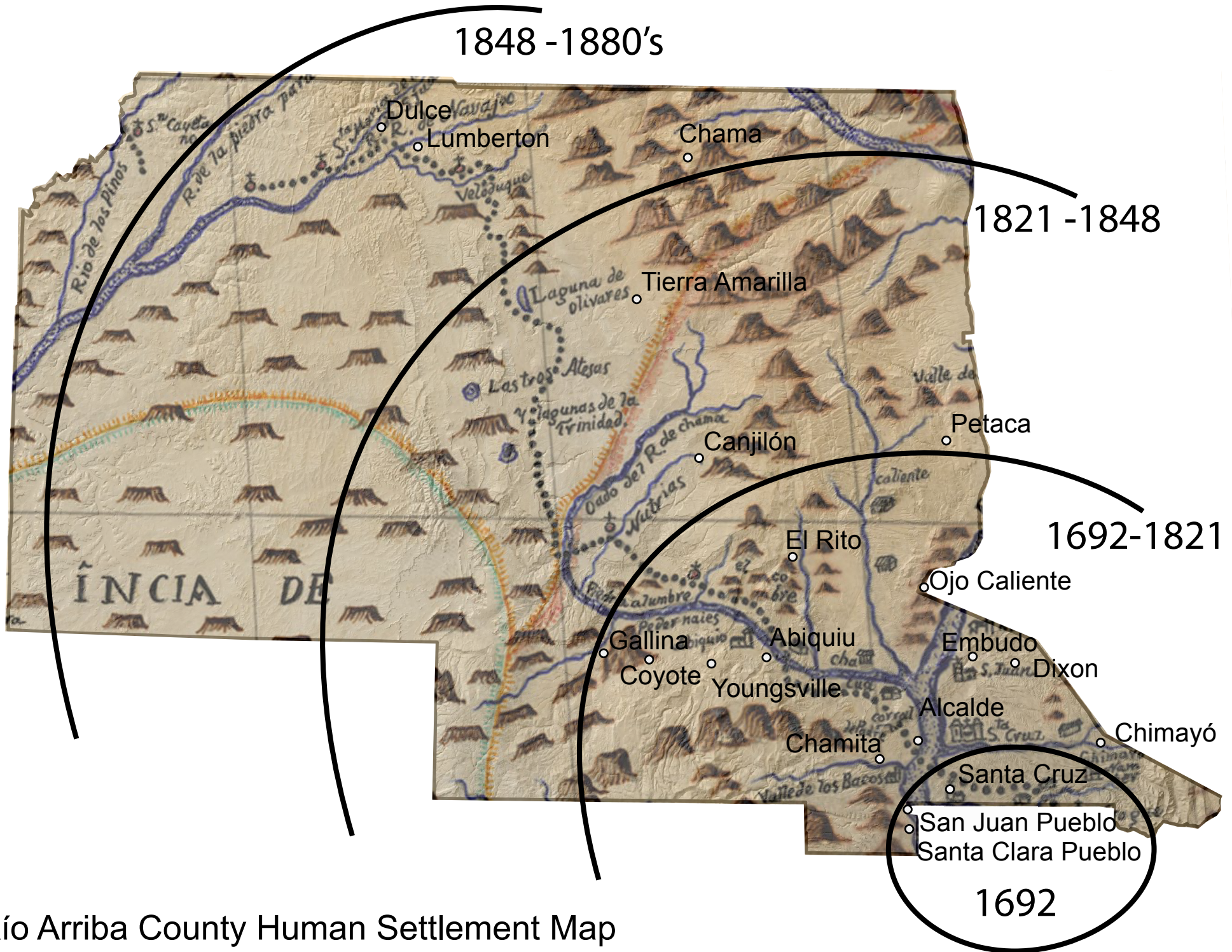
Table of Contents

- 1. Río Arriba County Historic Settlement Maps**
- 2. Río Arriba County Mapping and Pictorial Survey**
- 3. Río Arriba County Cultural Landscapes**



1. Rio Arriba County Historic Settlement Maps

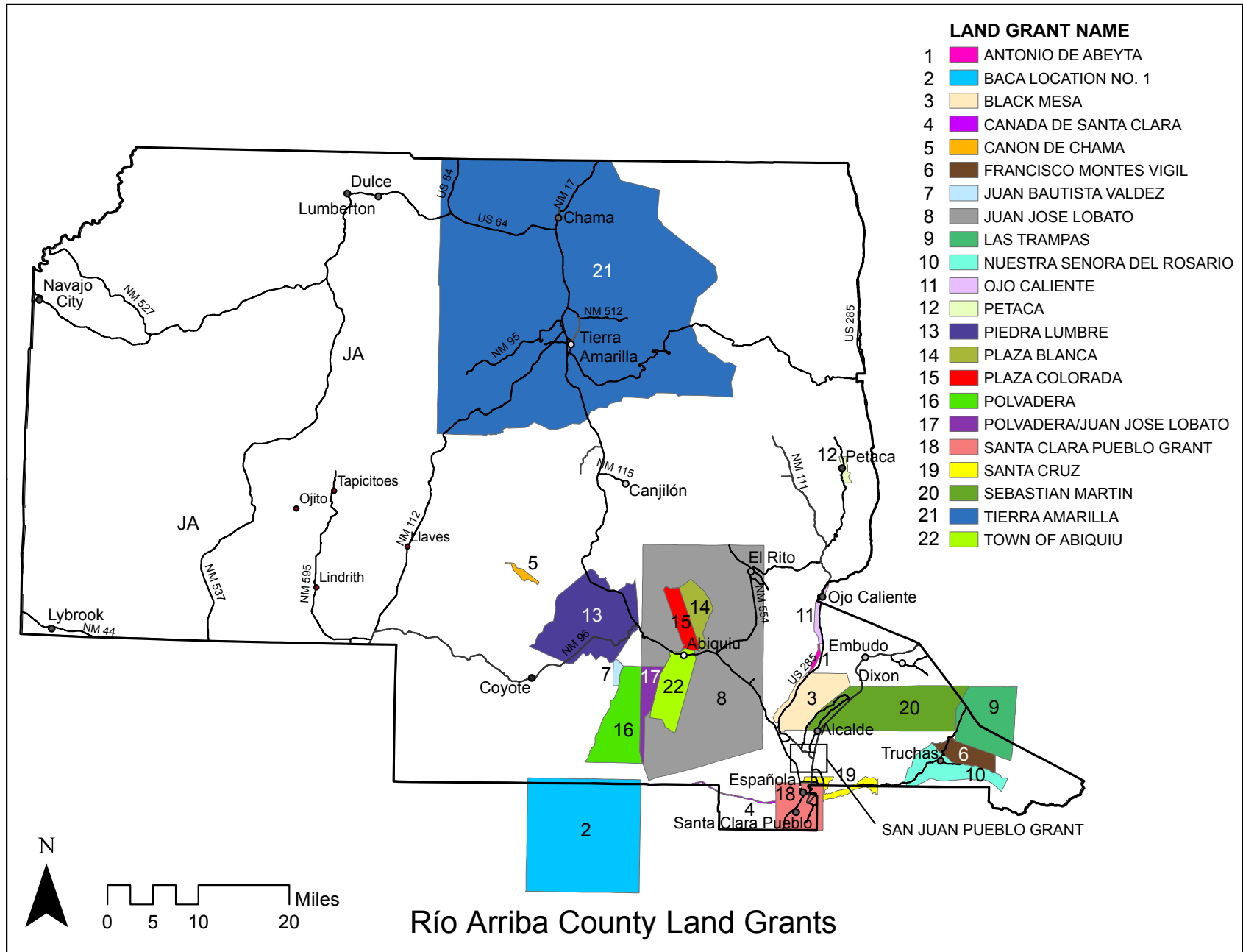




Río Arriba County Human Settlement Map

Historic Map: Bernardo Miera y Pacheco 1777

2. Río Arriba County Mapping and Pictorial Survey



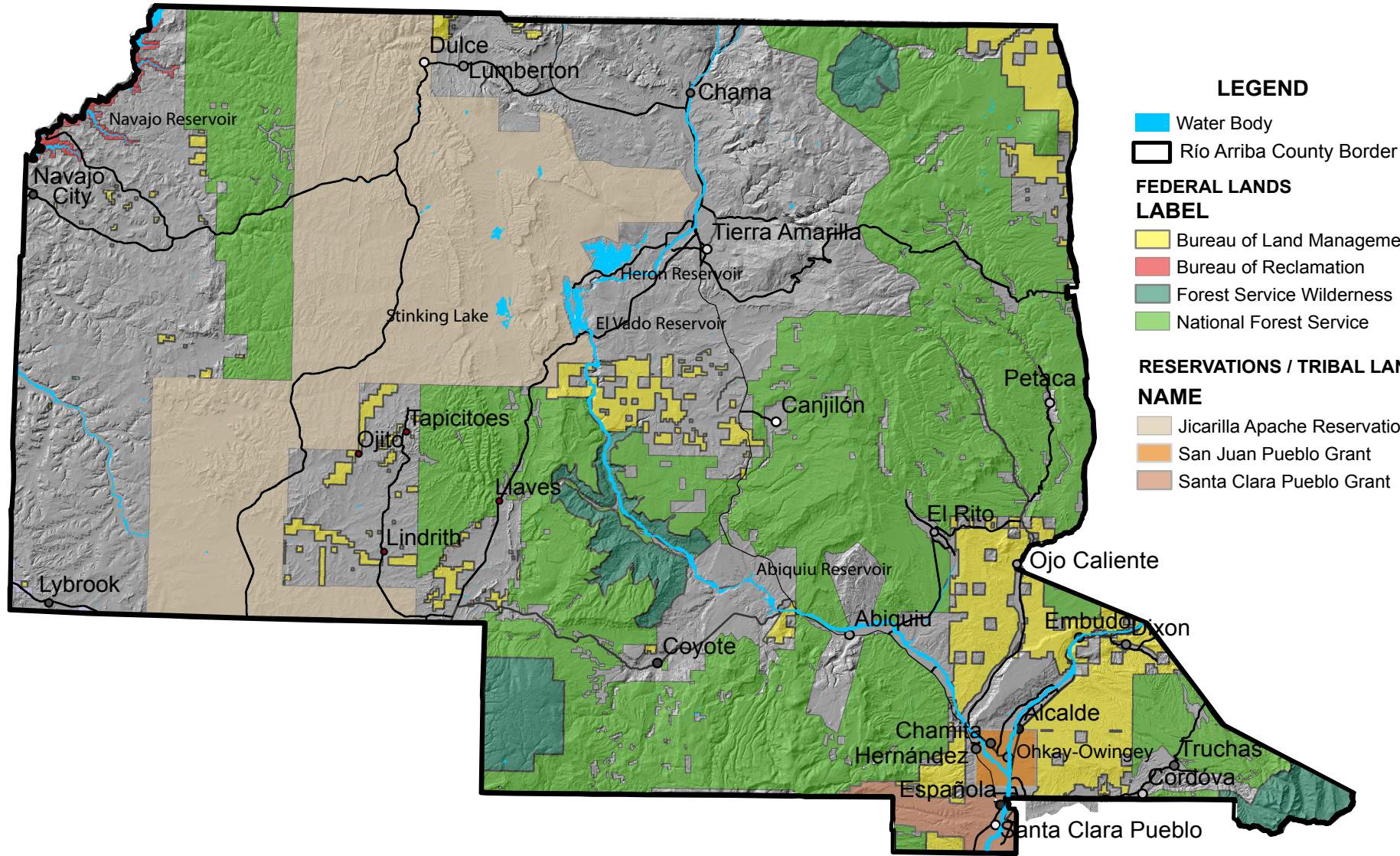
Land Grants in Río Arriba County:

Pueblo of San Juan - 1689
Santa Cruz de La Cañada - 1694/95
Pueblo of Santa Clara – 1699
Bartolome Sánchez – 1707 / 1711
Sebastian Martín – 1703 / 1712
Antonio de Salazar – 1714
Cristóbal Crespín – 1714
Pueblo of Quemado (Rito Quemado) – 1721
Chamita, Town of – 1724
Cristobal de Torres – 1724
Cañada de Santa Clara-Juan Tafoya -1724 /1763*
Embudo – 1725
Bartolomé Trujillo (San José de Garcia) – 1734-1752
Manuel de García de Ribas – 1735
José Antonio Torres (Bartolome-Trujillo) – 1735
Juan Estevan García de Noriega – 1735
Antonio de Ulibarri (Pueblo Colorado) – 1735
La Barranca – 1735
Antonio de Abeytia-ca. – 1736
Plaza Blanca -1739
Plaza Colorada – 1739
Juan José Lovato – 1740
Black Mesa (Mesa Prieta, Diego de Medina) – 1743
Roque Jacinto Jaramillo – 1746
Town of Las Trampas – 1751
San José de Gracia – 1752
Francisco Montes Vigil – 1754
Nuestra Señora del Rosario, San Fernando y Santiago (Truchas) – 1754
Town of Abiquiu – 1754
Cañada de Santa Clara – 1763 (Granted to Santa Clara Pueblo)
Pedro Martin Serrano (Piedra Lumbre, Casas de Riano) 1766/1806

Polvadera (Juan Pablo Martin) – 1766
José Ignacio Alari (Ojo Caliente) 1768
Ojo Caliente – 1768 / 1793 (aka Antonio Joseph)
San Juakin del Nacimiento – 1769
Town of El Rito – 1780?
Piedra Lumbre (Pedro Martín Serrano) – 1806
Cañon de Chama – 1806
Vallecito de San Antonio – 1807
Juan Bautista Valdez – 1807
Juan de Ulibarri – 1810
La Nasa – 1810
Juan Bautista Valdez (Cañon de Pedernales) – 1807/1814
Town of Vallecito de Lovato – 1824
Tierra Amarilla – 1832
Petaca – 1836
Rio Del Oso (Jose Antonio Valdez) – 1840
Los Conejos – 1842
Rancho de Abiquiu – No Date
Rancho de Coyote – No Date

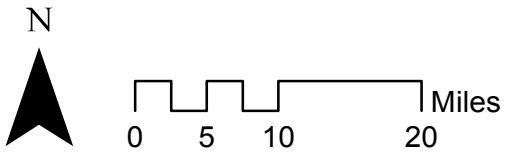
Source: *Rio Arriba, A New Mexico County.*
Torrez & Trapp

Río Arriba County Federal and Tribal Lands



LEGEND

- Water Body
- Río Arriba County Border
- FEDERAL LANDS LABEL**
- Bureau of Land Management
- Bureau of Reclamation
- Forest Service Wilderness
- National Forest Service
- RESERVATIONS / TRIBAL LANDS NAME**
- Jicarilla Apache Reservation
- San Juan Pueblo Grant
- Santa Clara Pueblo Grant



Jarrett Garcia
 UNM School of Architecture and Planning
 Community and Regional Planning Program
 Resource Center for Raza Planning

Río Arriba County Federal and Tribal Lands with Selected Land Grants

LEGEND

- Santa Cruz Grant Patented
- Petaca Grant Patented
- Canon de Chama Grant Patented
- Río Arriba County Border
- Water Body
- Chama Grant Claimed
- Petaca Grant Claimed
- Santa Cruz Grant Claimed

FEDERAL LANDS

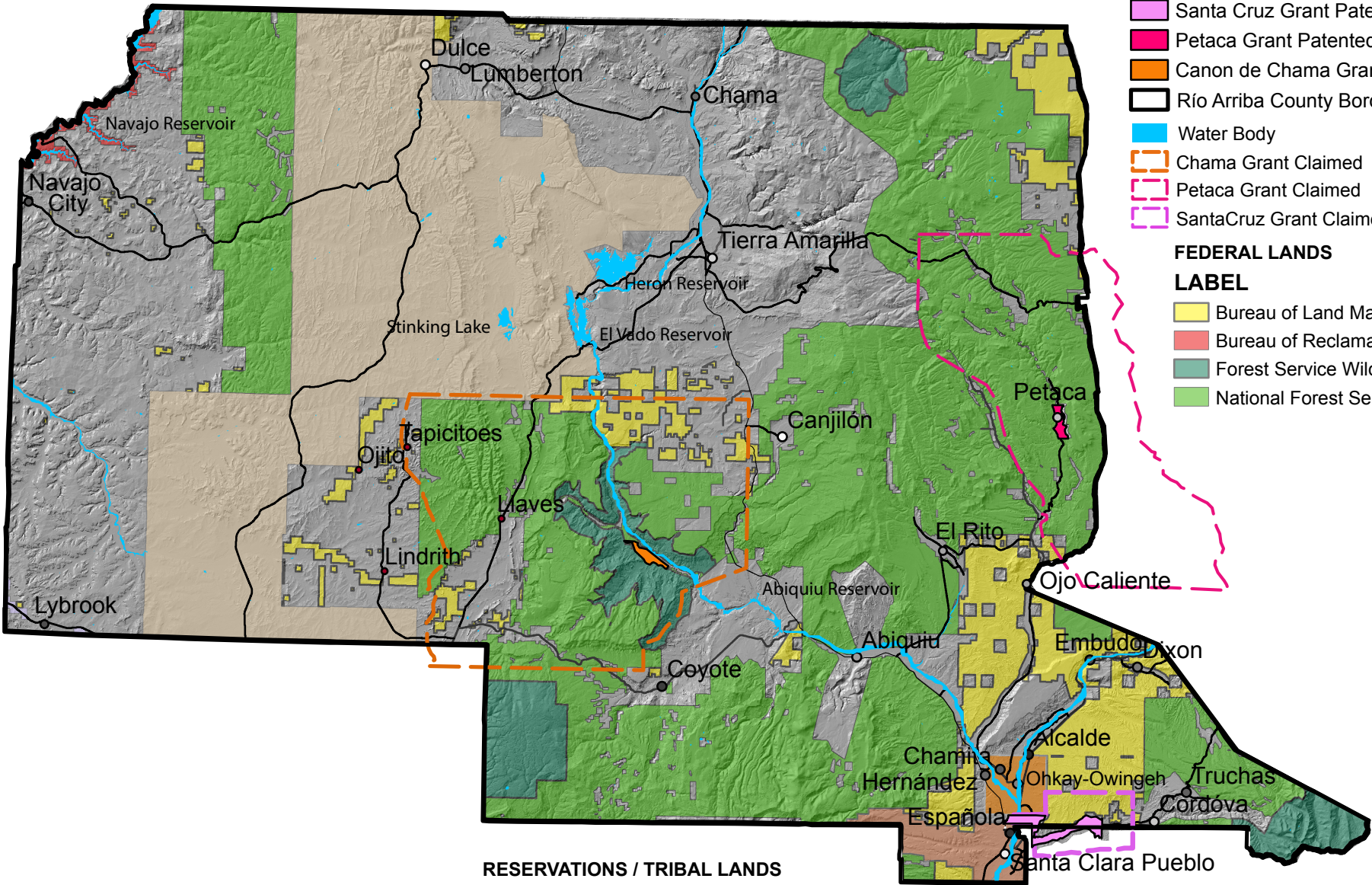
LABEL

- Bureau of Land Management
- Bureau of Reclamation
- Forest Service Wilderness
- National Forest Service

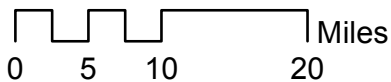
RESERVATIONS / TRIBAL LANDS

NAME

- Jicarilla Apache Reservation
- San Juan Pueblo Grant
- Santa Clara Pueblo Grant

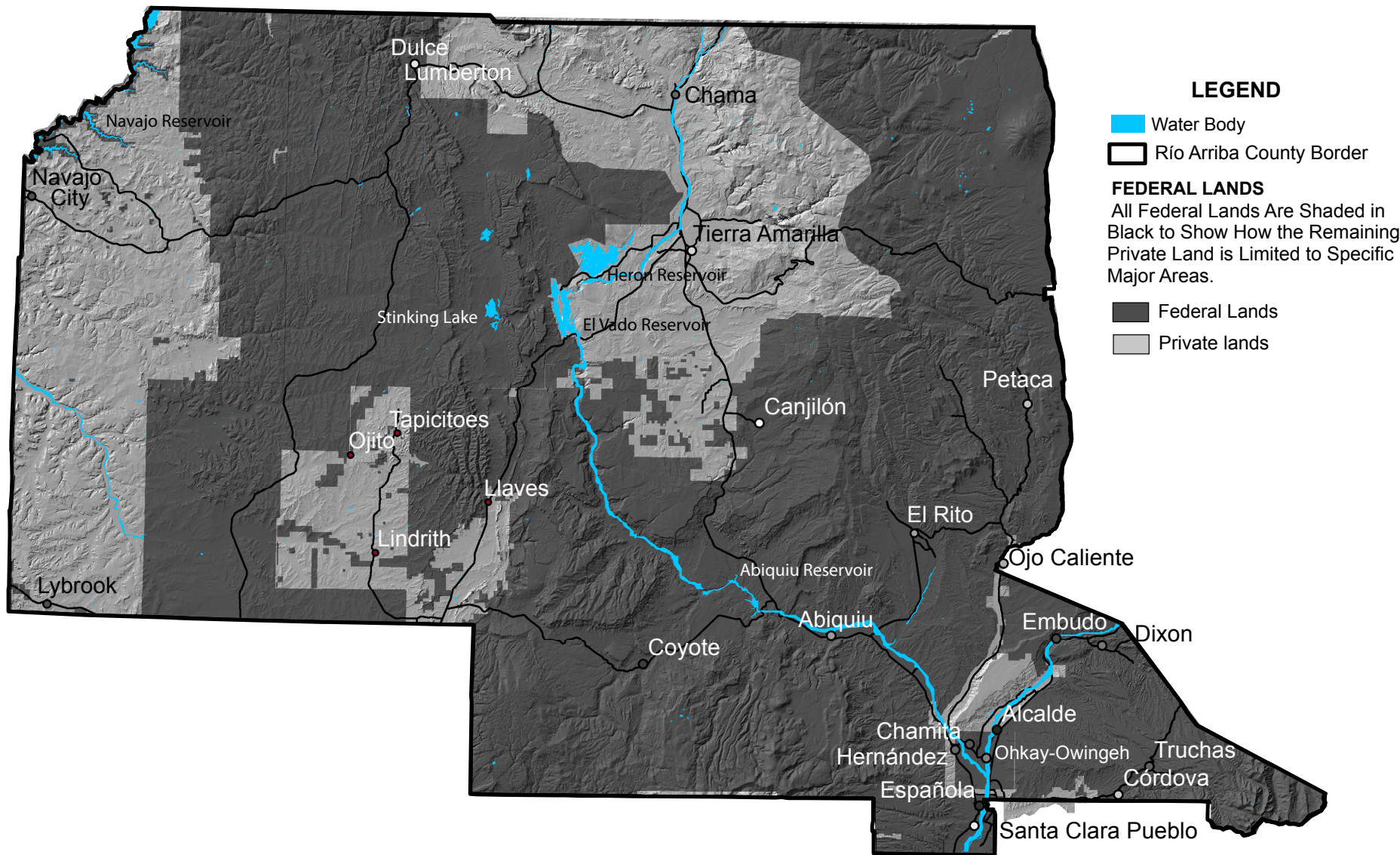


N



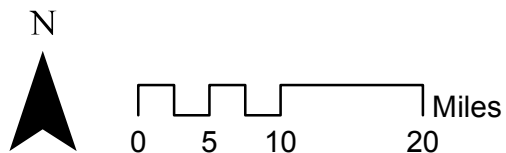
Jarrett Garcia
 UNM School of Architecture and Planning
 Community and Regional Planning Program
 Resource Center for Raza Planning

Río Arriba County Federal Lands



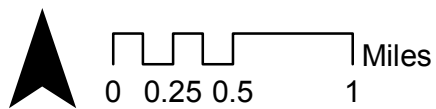
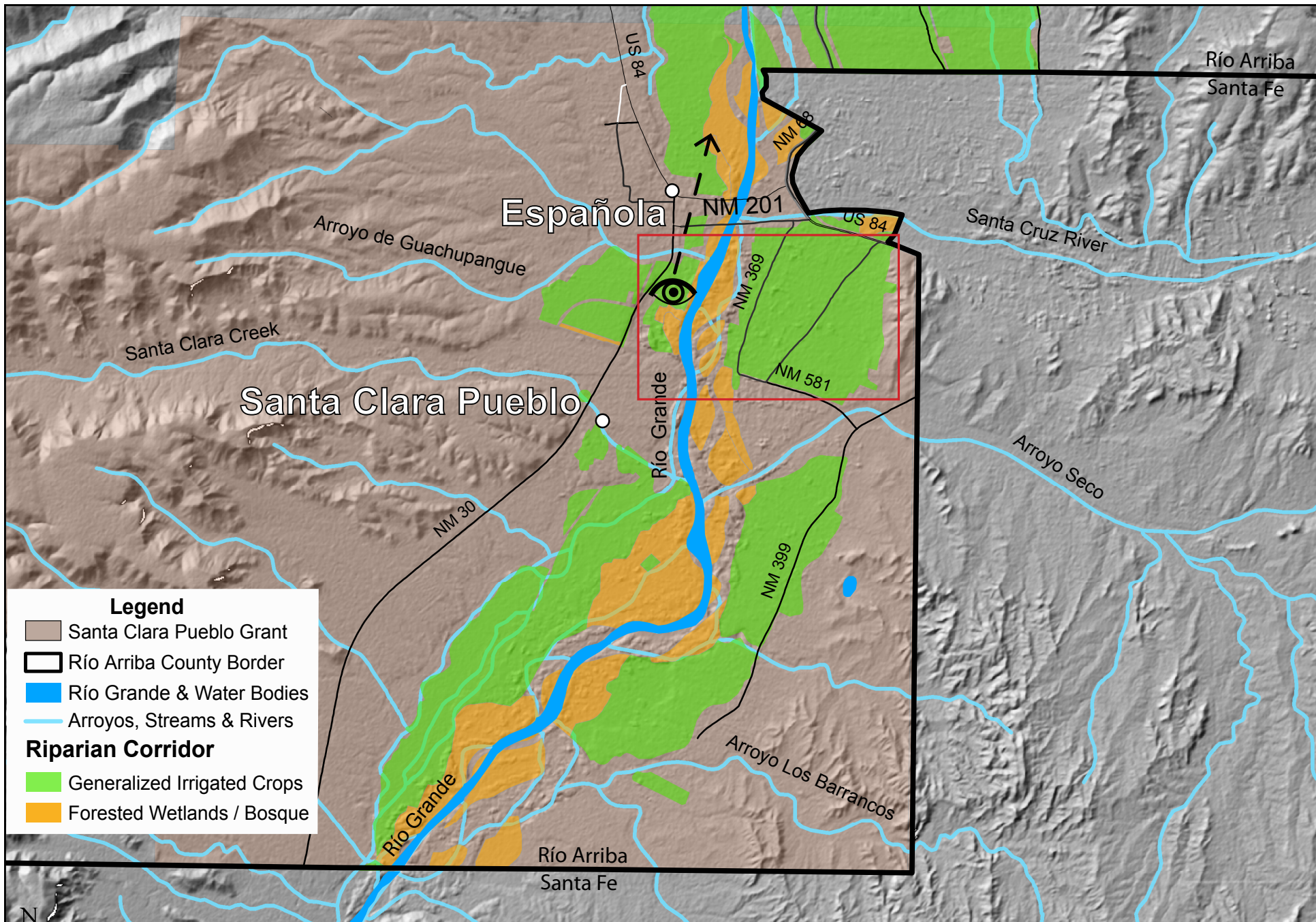
LEGEND

- Water Body
- Río Arriba County Border
- FEDERAL LANDS**
All Federal Lands Are Shaded in Black to Show How the Remaining Private Land is Limited to Specific Major Areas.
- Federal Lands
- Private lands



Composite Federal, Reservation and the Remaining Private Lands

Jarrett Garcia
UNM School of Architecture and Planning
Community and Regional Planning Program
Resource Center for Raza Planning



Río Arriba County Río Grande
Riparian Corridors and Irrigated Croplands



Historic Greenbelt



Forested Wetlands / Bosque



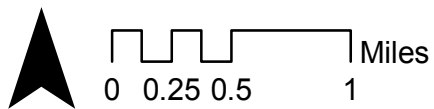
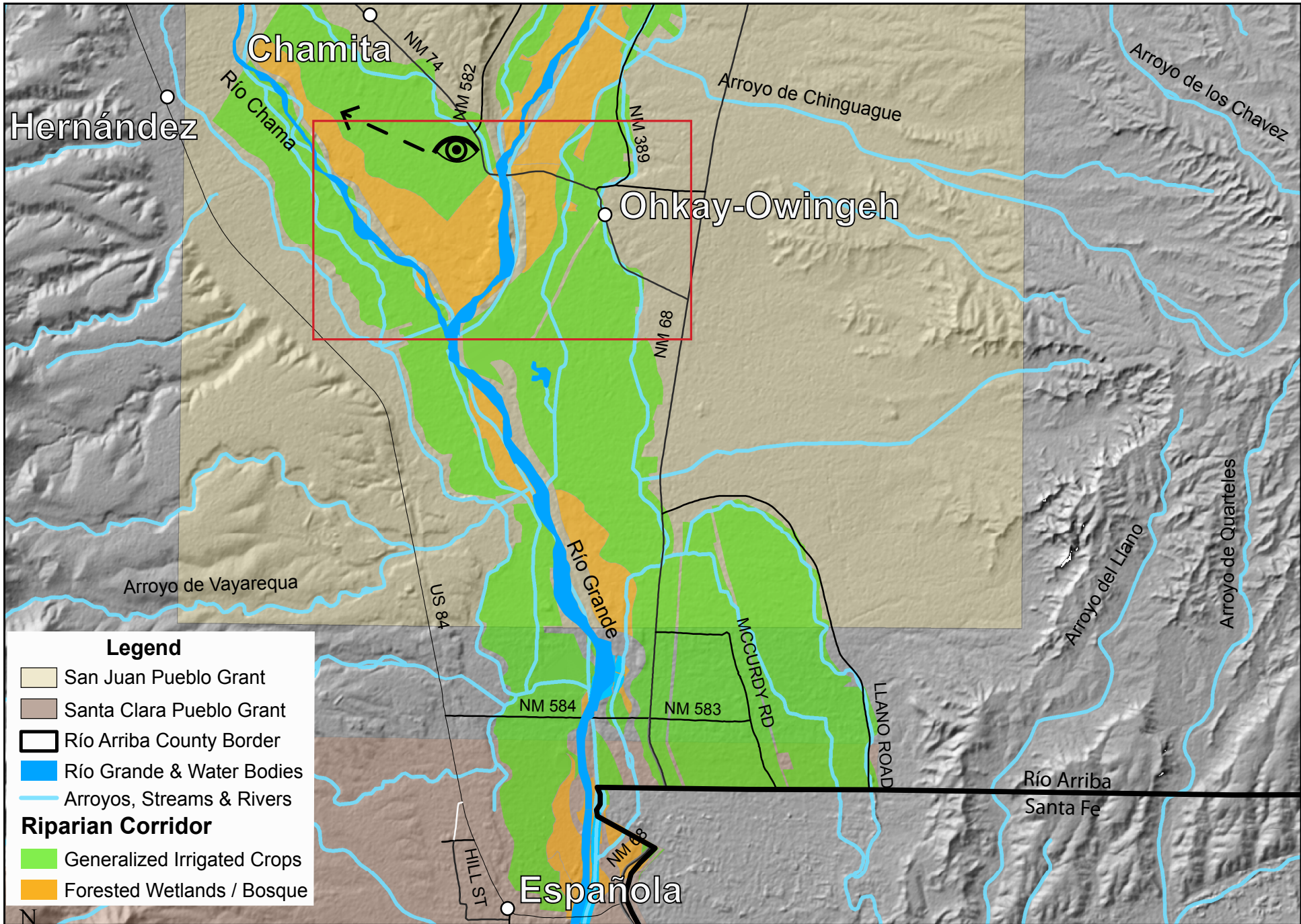
Río Grande



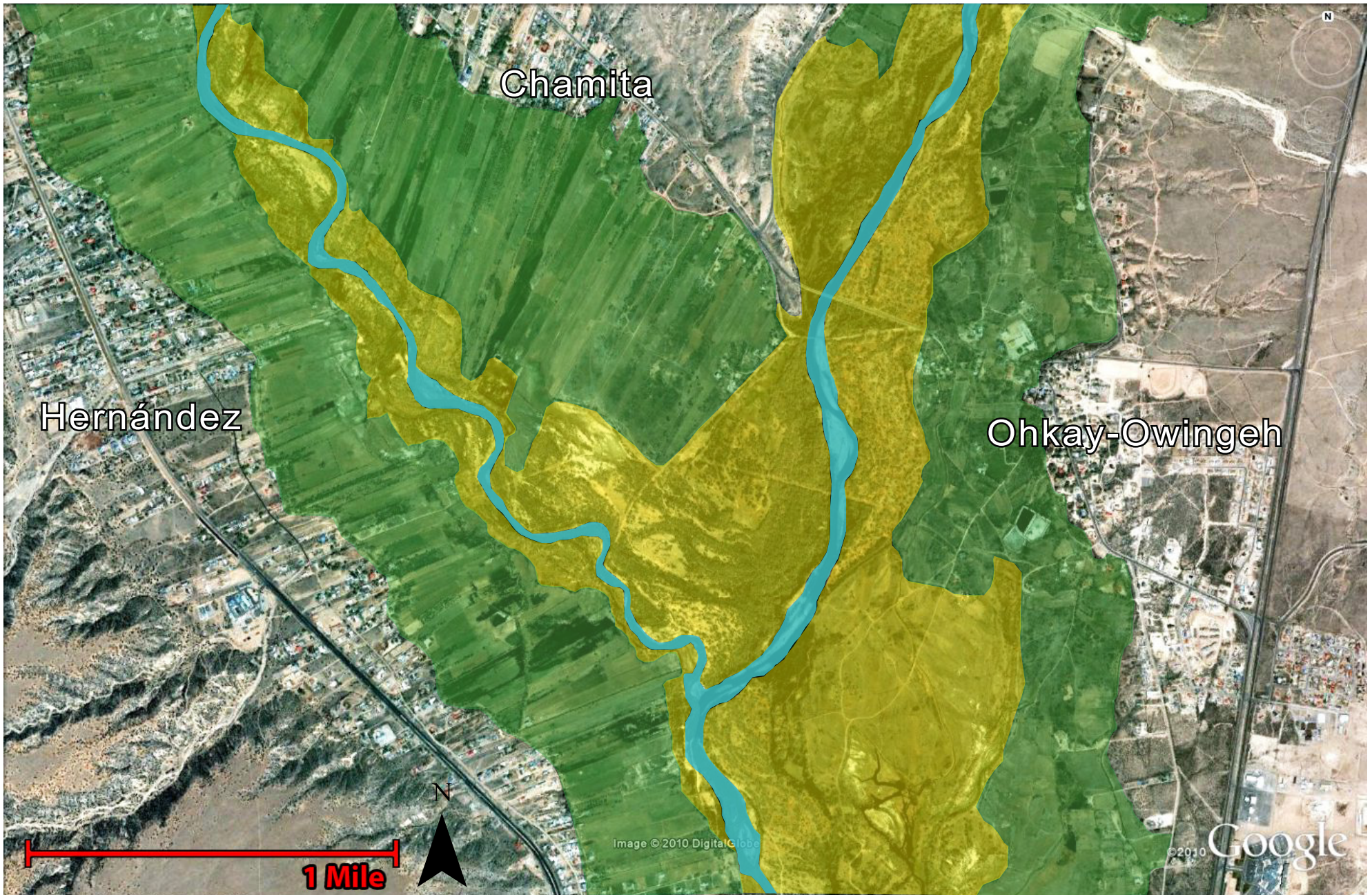
Sectional Diagram Represents Average Ratios of Greenbelt, Bosque and River



North View of Española Valley



Río Arriba County Río Grande
Riparian Corridors and Irrigated Croplands



Historic Greenbelt



Forested Wetlands / Bosque



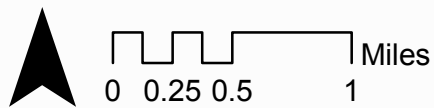
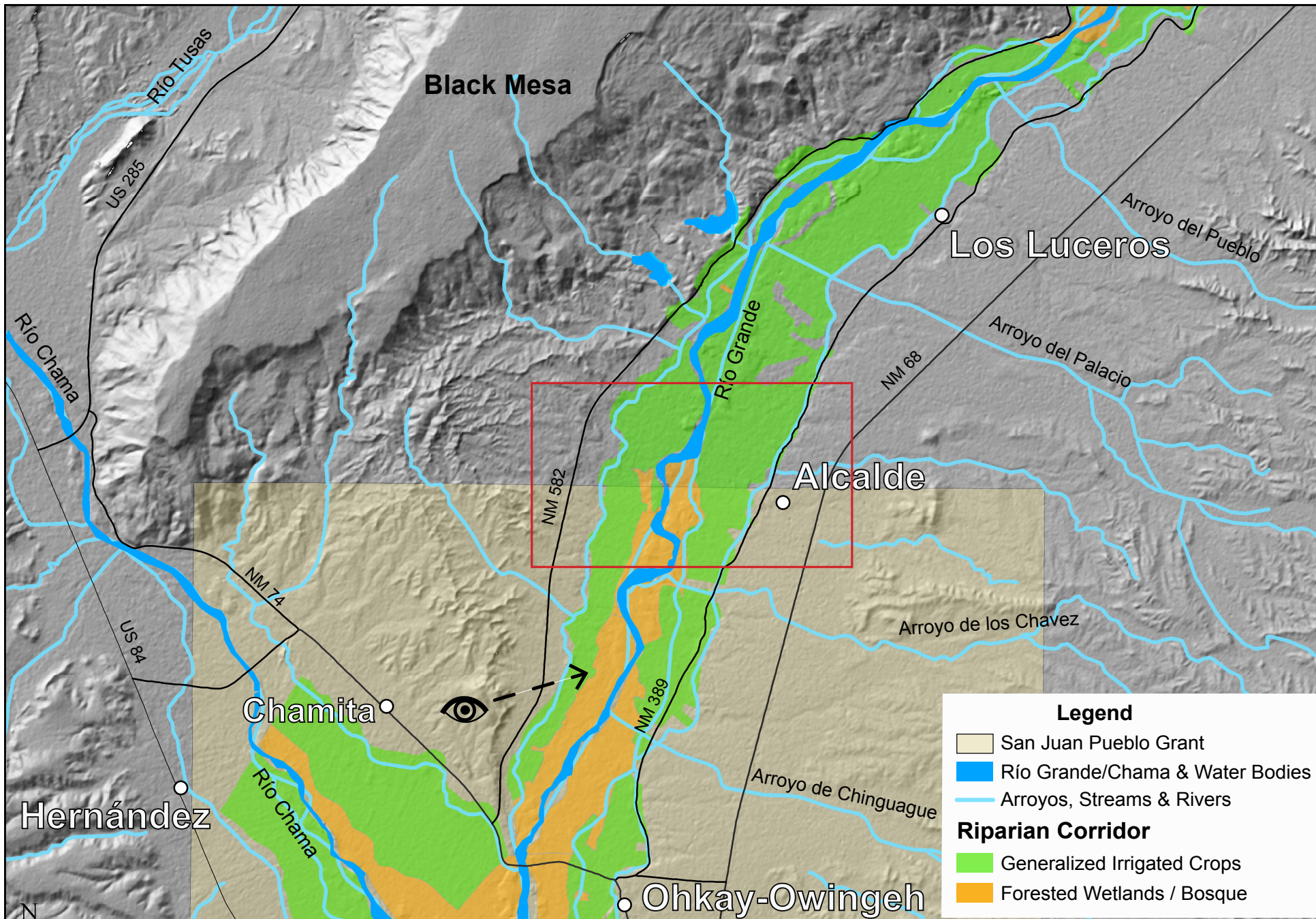
Río Grande



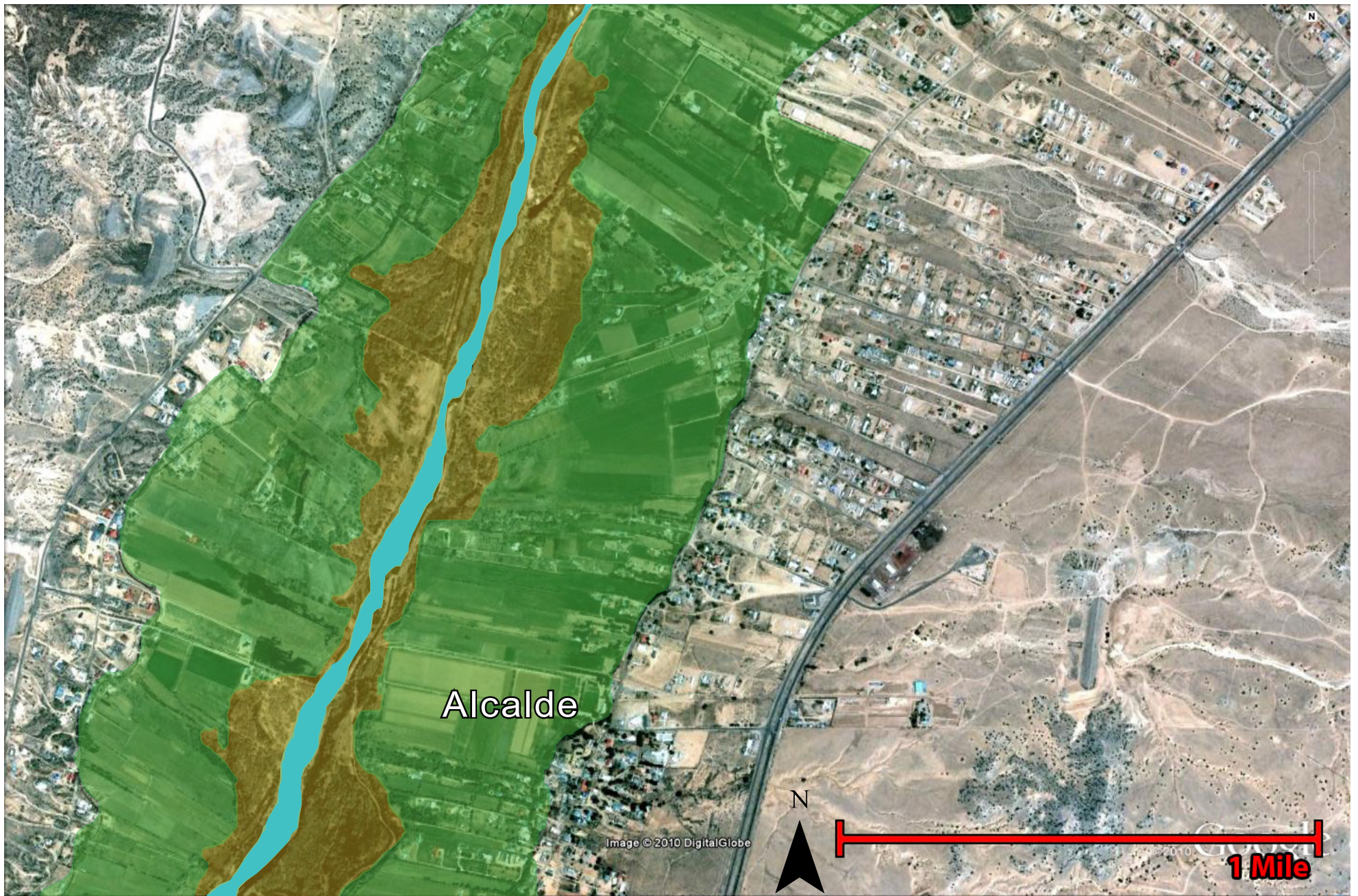
Sectional Diagram Represents Average Ratios of Greenbelt, Bosque and River



Northwest View of Chama River Valley, Chamita



Río Arriba County Río Grande
Riparian Corridors and Irrigated Croplands



Historic Greenbelt



Forested Wetlands / Bosque



Río Grande



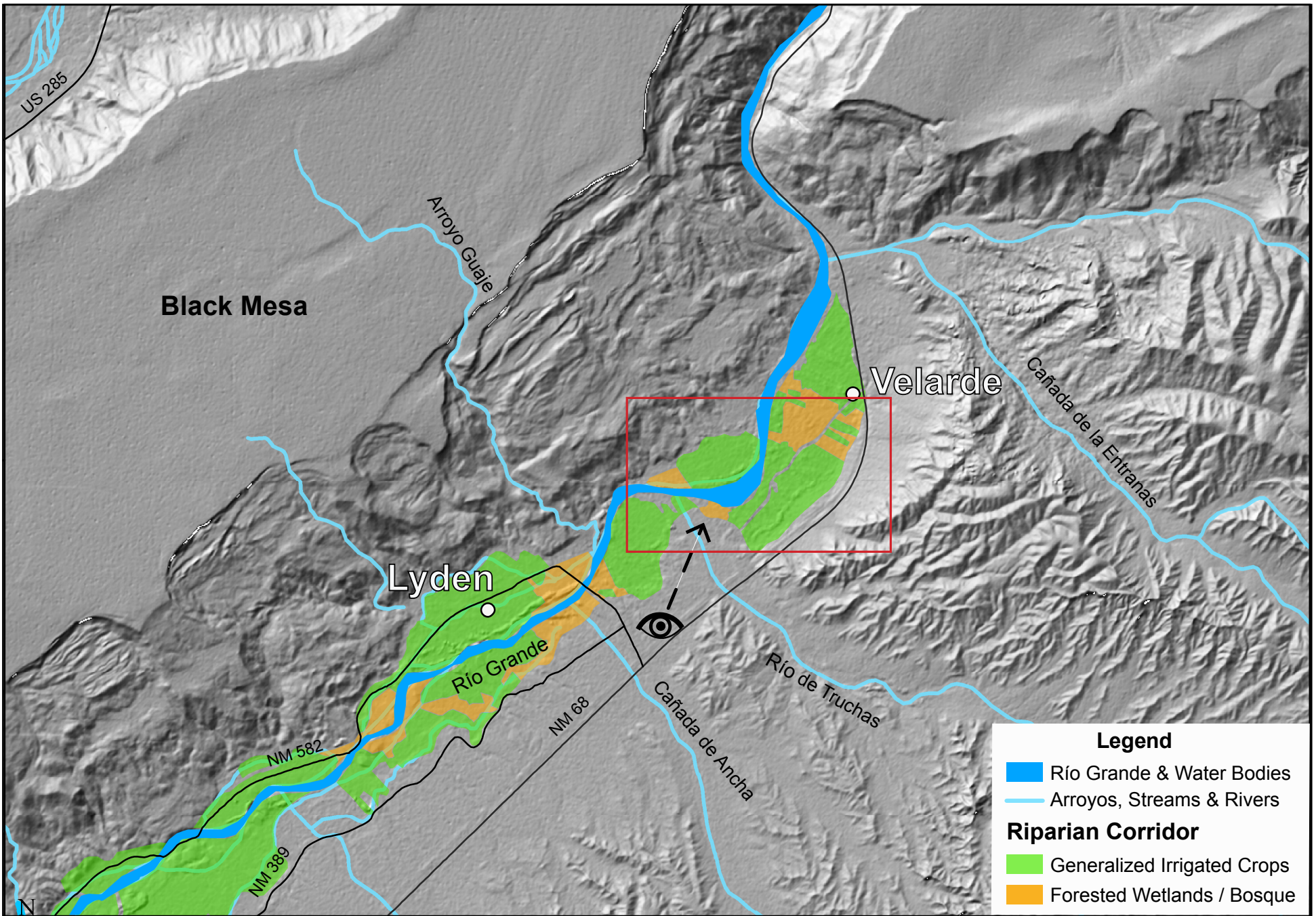
Sectional Diagram Represents Average Ratios of Greenbelt, Bosque and River



North View of Río Grande Valley Opposite Alcalde



View of Irrigated Croplands, Alcalde

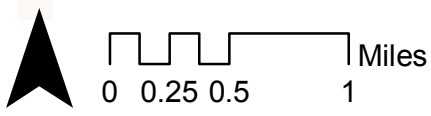


Legend

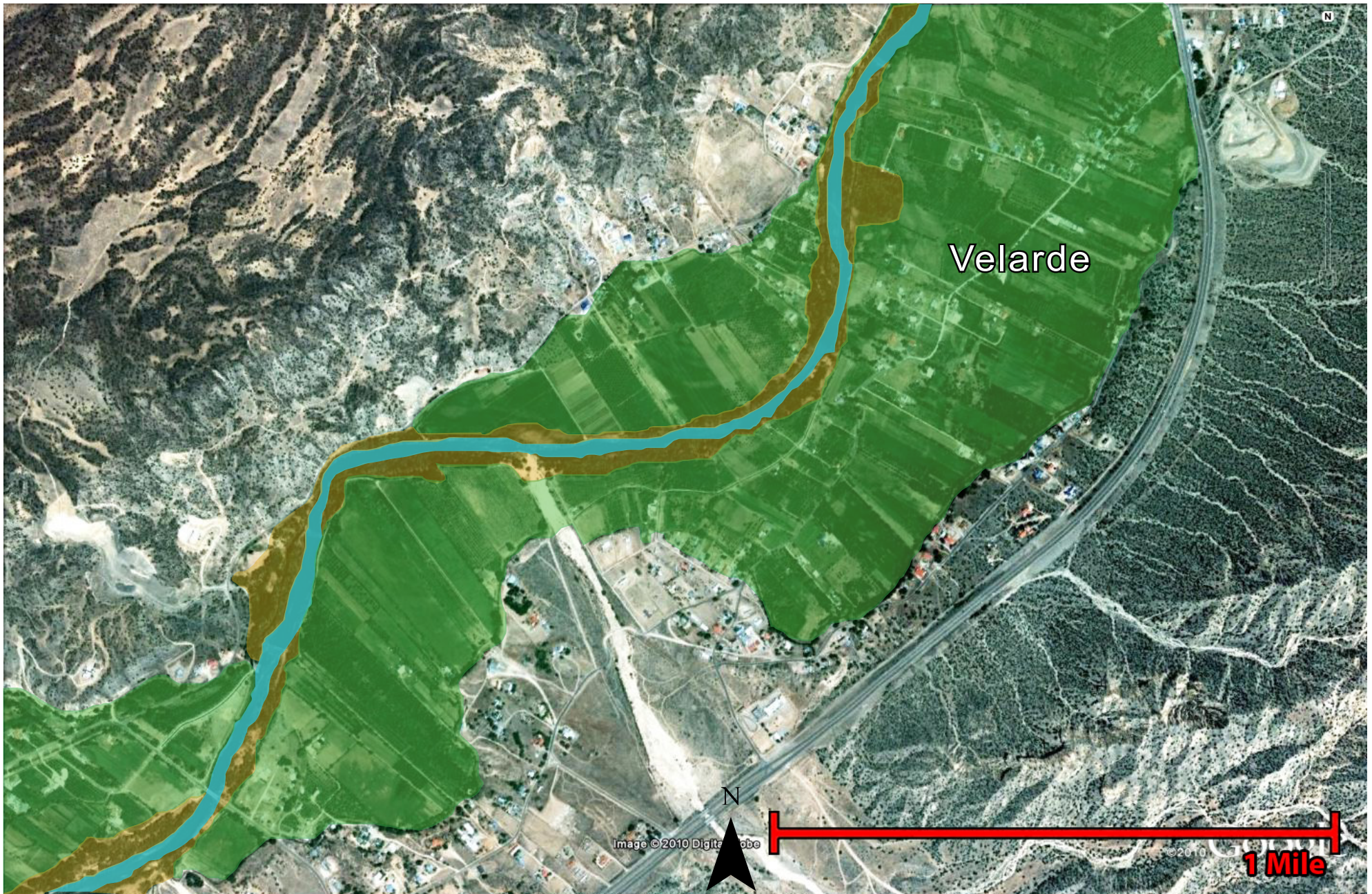
- Río Grande & Water Bodies
- Arroyos, Streams & Rivers

Riparian Corridor

- Generalized Irrigated Crops
- Forested Wetlands / Bosque



Río Arriba County Río Grande
Riparian Corridors and Irrigated Croplands



Historic Greenbelt



Forested Wetlands / Bosque



Río Grande



Sectional Diagram Represents Average Ratios of Greenbelt, Bosque and River



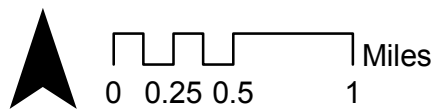
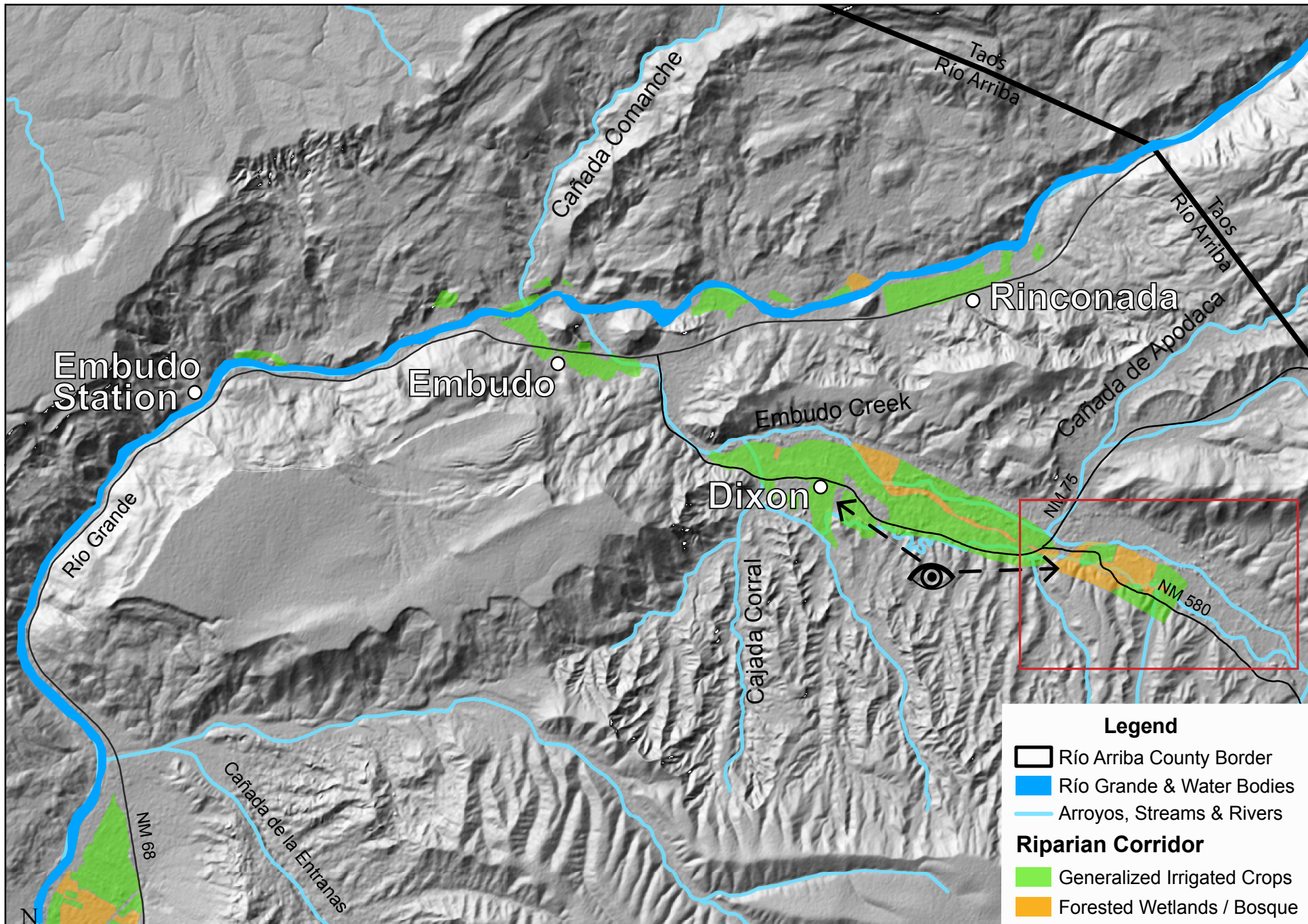
Northwest View, Velarde



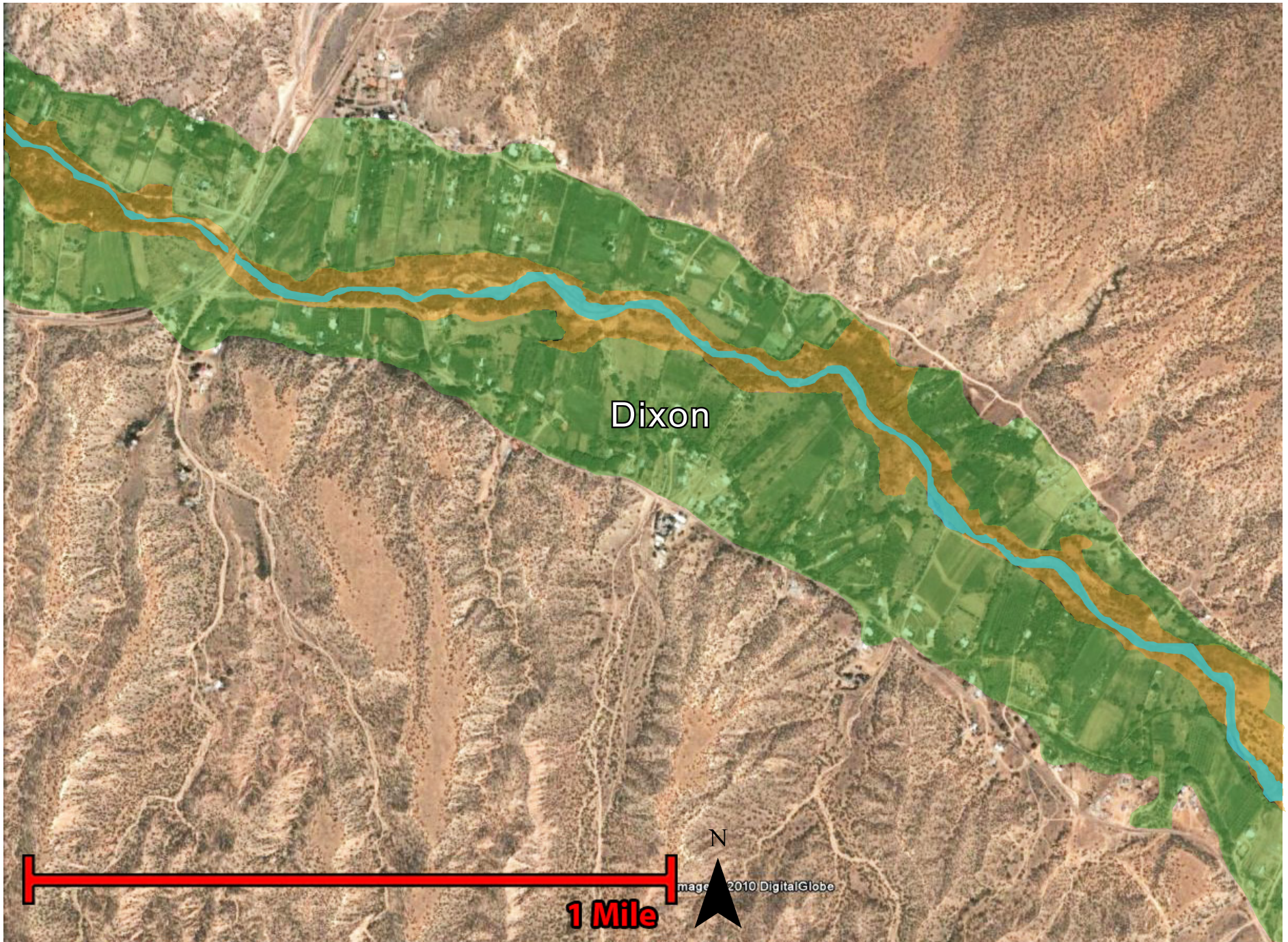
View of Río Grande River and Acequia, Velarde



View of Irrigated Croplands, Velarde.



Río Arriba County Río Grande
Riparian Corridors and Irrigated Croplands



Historic Greenbelt



Forested Wetlands / Bosque



Río Grande



Sectional Diagram Represents Average Ratios of Greenbelt, Bosque and River



Northwest View of Dixon Valley



Northeast View of Dixon Valley

3. Río Arriba County Cultural Landscapes



Abiquiu



Alcalde



Chama



Chimayó



Dixon



Dulce



El Rito



El Vado



Española



Ojo Caliente



Tierra Amarilla



Truchas

Images: William Stone, New Mexico Then & Now



1889

Circa 2003

Chama River, Present Day Abiquiu Reservoir



1917

Abiquiu



2010



1915

2010

Abiquiu



1915



2010

Alcalde



1915

Alcalde



2010



1917

2010

Chimayó

Images: William Stone, New Mexico Then & Now



Circa 1915

Circa 2003

Dixon, Embudo Creek

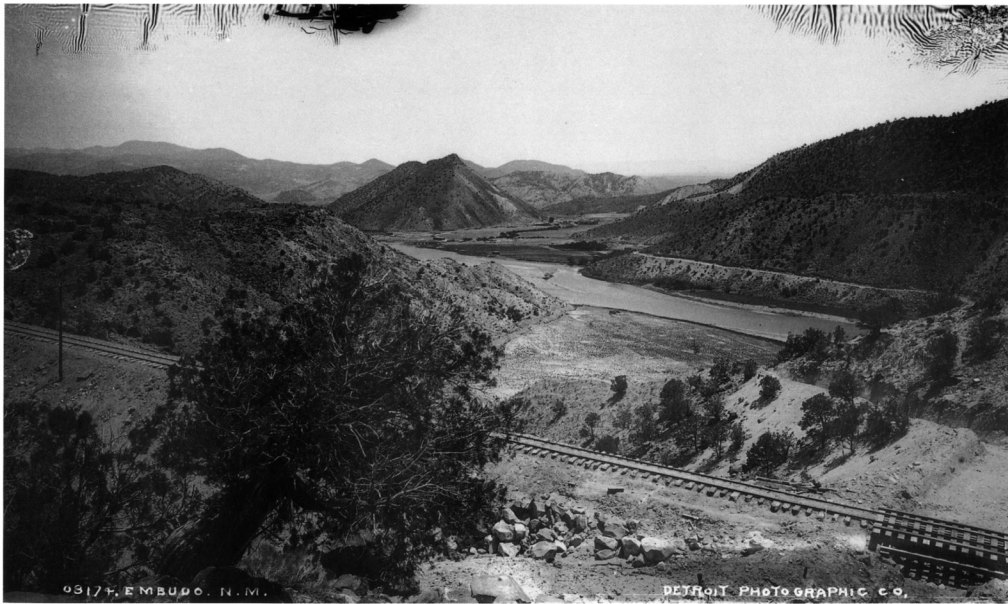


St. Anthony Church 1935

2010

Dixon

Images: William Stone, New Mexico Then & Now



Circa 1900

Circa 2002

Embudo



1930

2010

Española



1930

El Rito Church



1885

Santa Cruz Church at Ojo Caliente

Sources

Stone, W. and Widdison, J. *New Mexico Then And Now*. 2004. Westcliffe Publishers.

Swadesh, F. L. *Hispanic Americans of the Ute Frontier from the Chama Valley to the San Juan Basin*. 1966. Michigan

Tórrez, R and Trapp, R. *Rio Arriba, A new Mexico County*. 2010. Los Ranchos, NM

Library of Congress. Digital Collections. <http://www.loc.gov/library/libarch-digital.html>

University of New Mexico, Zimmerman Library, Center for Southwest Research and Special Collections. Rocky mountain Online Archive and Digital Collections.