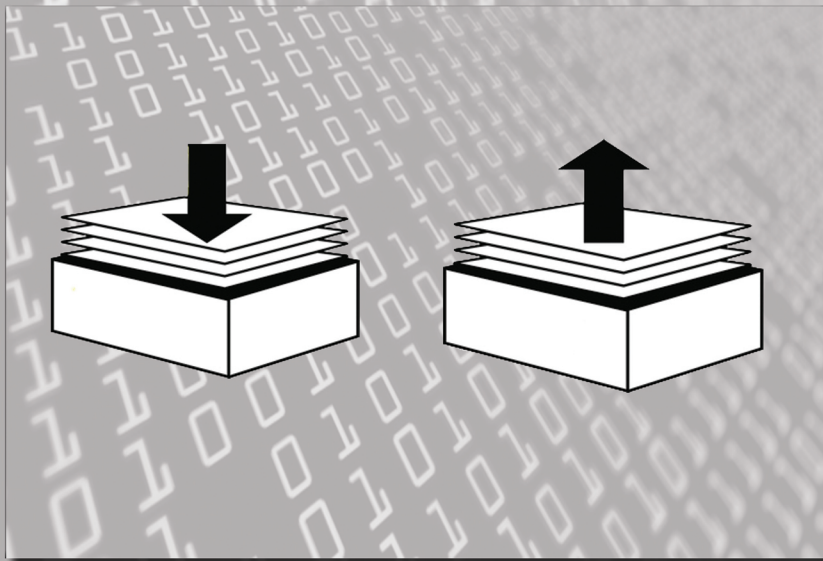


Data In, Data Out



**This catalogue accompanies the exhibition “Data In, Data Out” on view at the Walsh Gallery
October 31 through December 16, 2011.**

All measurements are in inches, height by width.

All images contained in this catalogue are courtesy of the artists unless otherwise noted.

Catalogue ©2011 Seton Hall University

All rights reserved. No content from this book may be reproduced, stored or transmitted in any form including, but not limited to, means electronic, mechanical, photocopying or recording. Permission to reproduce these materials must be requested in writing to the Board of Trustees, Seton Hall University, South Orange, New Jersey.

**Catalogue Design - Jeanne Brasile
Editor - Jeanne Brasile**

**Walsh Gallery at Seton Hall University
400 S. Orange Avenue
South Orange, New Jersey 07079
Phone: 973-275-2033
Fax: 973-761-9550
www.shu.edu**

ISBN# - 978-0-9793954-8-2

Data In, Data Out

Jill Auckenthaler with Sarah Nicole Phillips

Gail Biederman

Martin Brief

Stephen Cartwright

Nancy Daly

Samwell Freeman

Dennis Hlynsky

Patti Jordan

Jaime Kennedy and Kelly Urquhart

Heins Kim

Mie Kongo

Jason Lujan

Ben Pranger

Ryan Russo

Tore Terrasi

Amanda Thackray

Star Varner

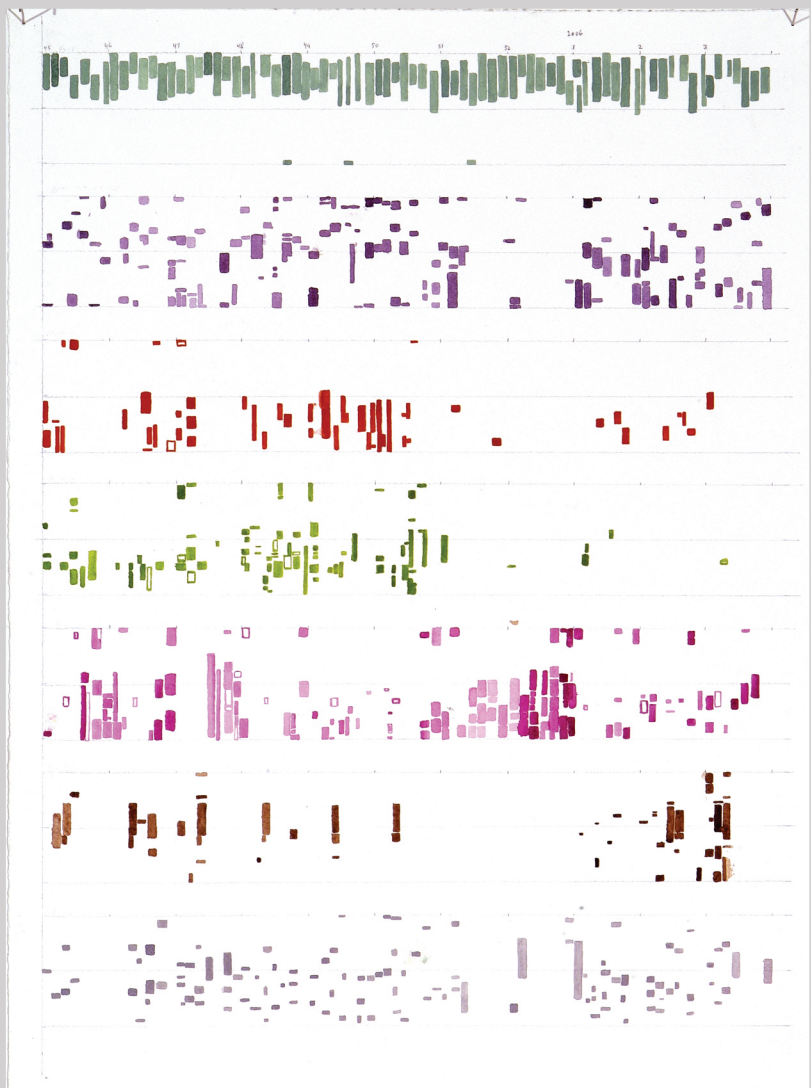
Kati Vilim

C.J. Yeh

Curated by Jeanne Brasile

While there is no generally accepted formal definition of algorithm, it could informally be understood as "a set of rules that precisely defines a sequence of operations." In this exhibition, the unique sets of rules guiding the artists in the creation their artwork vary in approach, and it is in this area that we can discern the extraordinary nature of creativity. Despite the intrinsic limitations dictated by the artists' chosen algorithmic process, there is ingenuity in the selection of those limits and the interpretation of the resulting data. Some artists document and decipher data such as calendar dates, travel patterns or daily activities. Other artists manipulate digital code. Often, the artists work in a prescribed manner that dictates color, composition or shape. Ultimately, the algorithm affects the final form. This practice is in opposition to conventional studio practice in which a desired end result is created through studies. These artists embrace chance and probability, concluded by an open-ended visual, in which specific acts of sorting, processing or enacting based on the collected data is more important than a pre-determined image. This multi-media show provides a broad interpretation of algorithmically based art. Although computer and digital art are included in the exhibition, diverse media such as painting, collage and sculpture are also on view to demonstrate the unlimited promise of these artistic investigations.

- Jeanne Brasile



Jill Auckenthaler with Sarah Nicole Phillips

“What My Schedule Sounds Like” (detail)

watercolor, graphite and pen on paper, mp3 audio file,

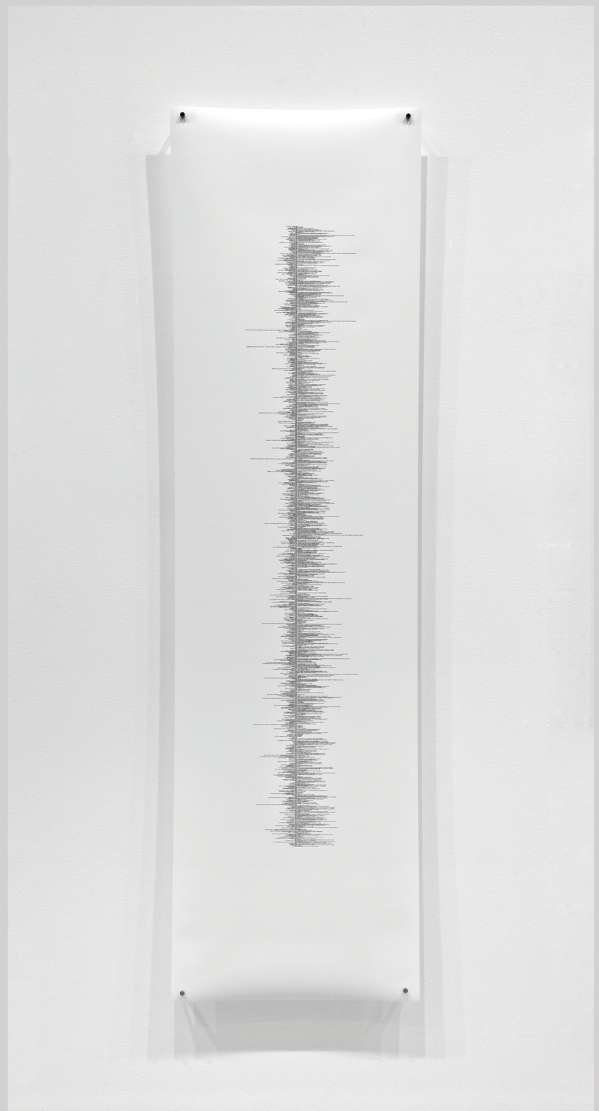
sound scores 25” x 18” each (parts 1 – 5), audio RT

2:30 mins

2006



Gail Biederman
"Constellations" (detail)
hand-made felt
dimensions variable
2010 – 2011



Martin Brief
"Religion and Spirituality"
ink on paper
44" x 18"
2010



Stephen Cartwright

"Reckoning (2003a, 2003b & 2003c)"

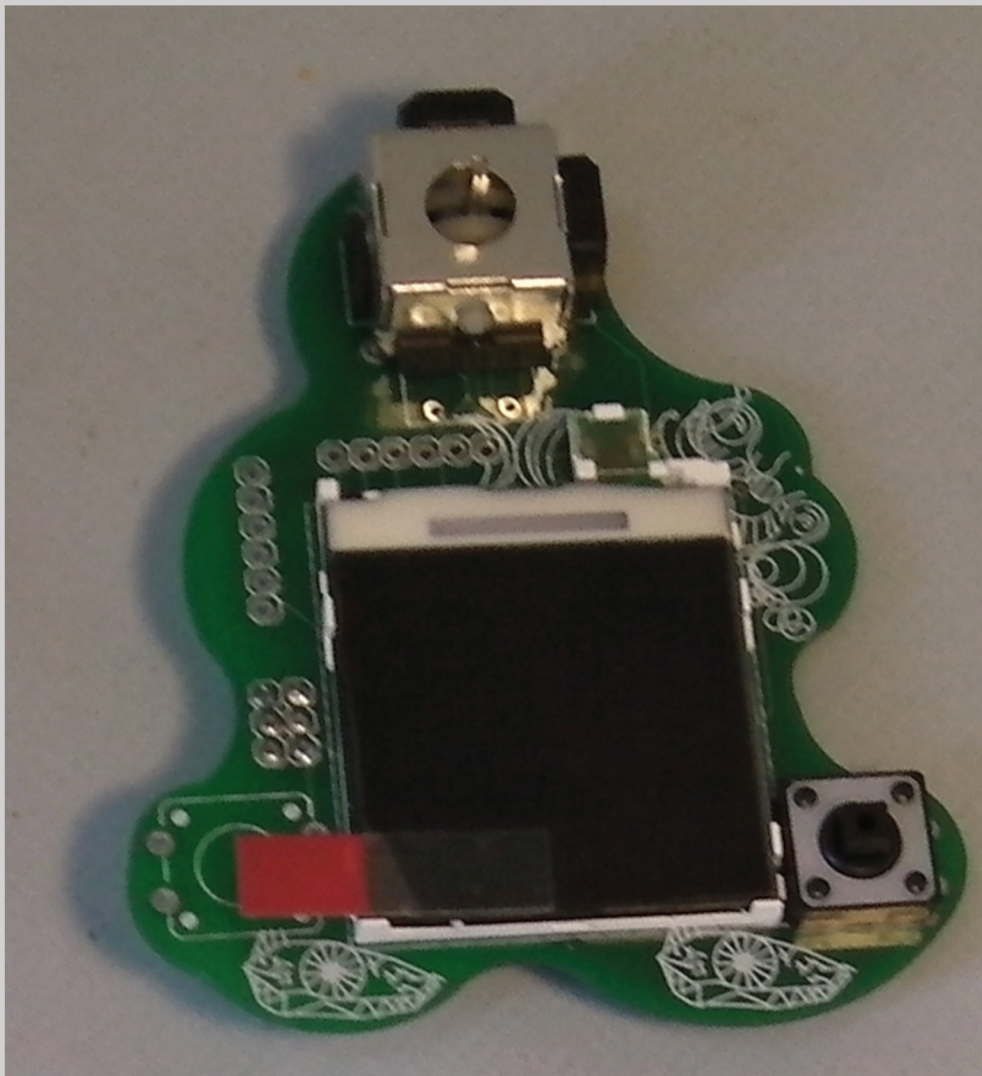
ABS rapid prototype

52" x 14" x 14" (each)

2007



Nancy Daly
"Joanna Rose White (1.26.2007-12.19.2011)"
MDF, motor, receipt paper
12" x 12" x 12"
2011



Samwell Freeman

“Similar Sketch Facilitator” (detail)
custom printed circuit boards, software, computer
8” x 3” x 2”
2011



Dennis Hlynsky

“Murmurations of Starlings” (still)

digital file

222MB

2011



Patti Jordan

"Horn-Mad"

ink and graphite on paper

26" x 32"

2010



Jamie Kennedy and Kelly Urquhart

"Huntington Bancshares (HBAN), March 9, 2010, +3.57%"

digital composite print on Hahnemuhle paper

19" x 13"

2011



Heins Kim

“Untitled (3) Penance Alhambra” (detail)

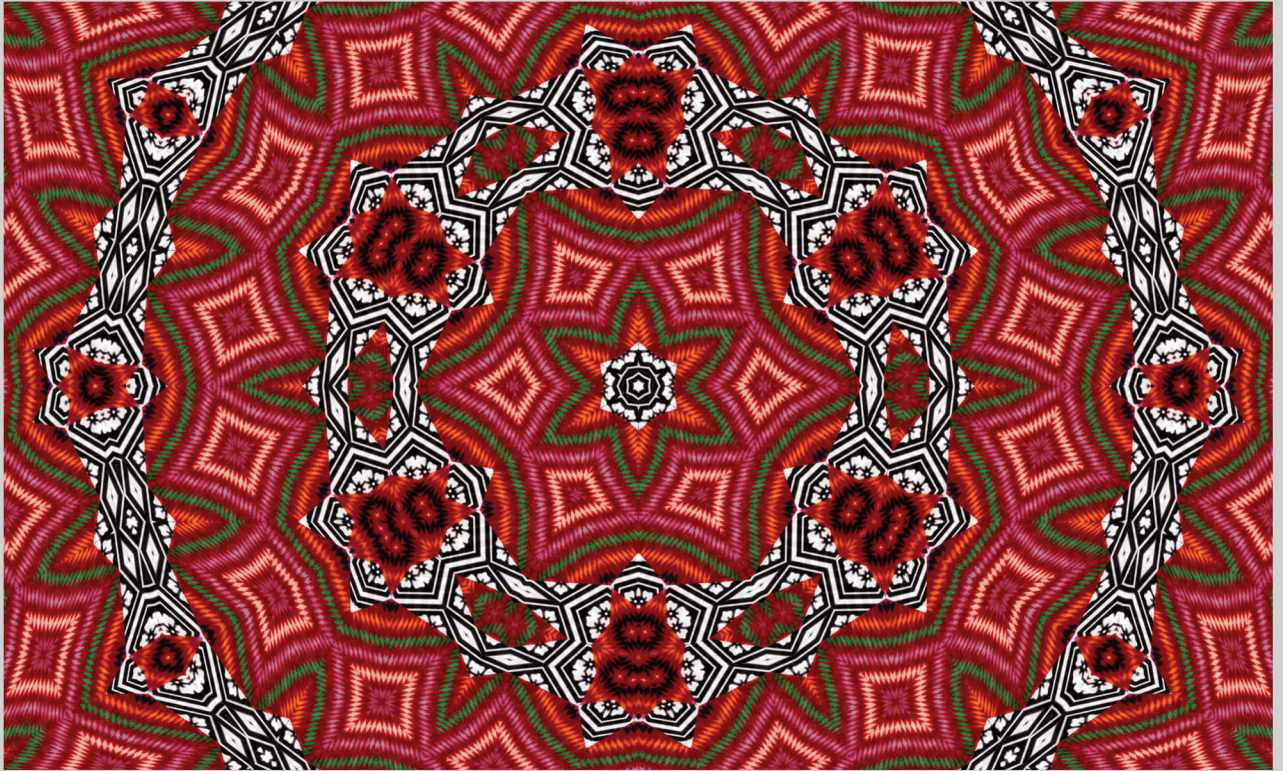
blue/brown fine marker/ink on aluminum plate mounted on honeycomb

30” x 50”

2011



Mie Kongo
"Bird Forever Dove"
porcelain, glaze, wood, paint
13" x 26" x 16"
2008

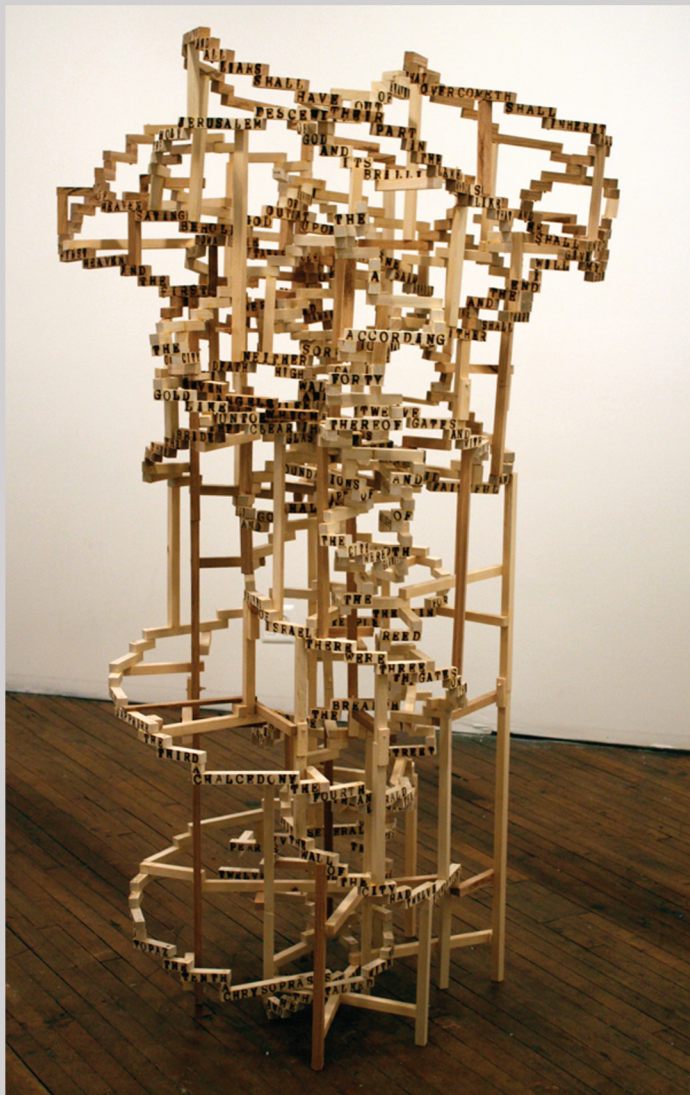


Jason Lujan

“Far East by Southwest” (still)

single channel video, 3 min

2009



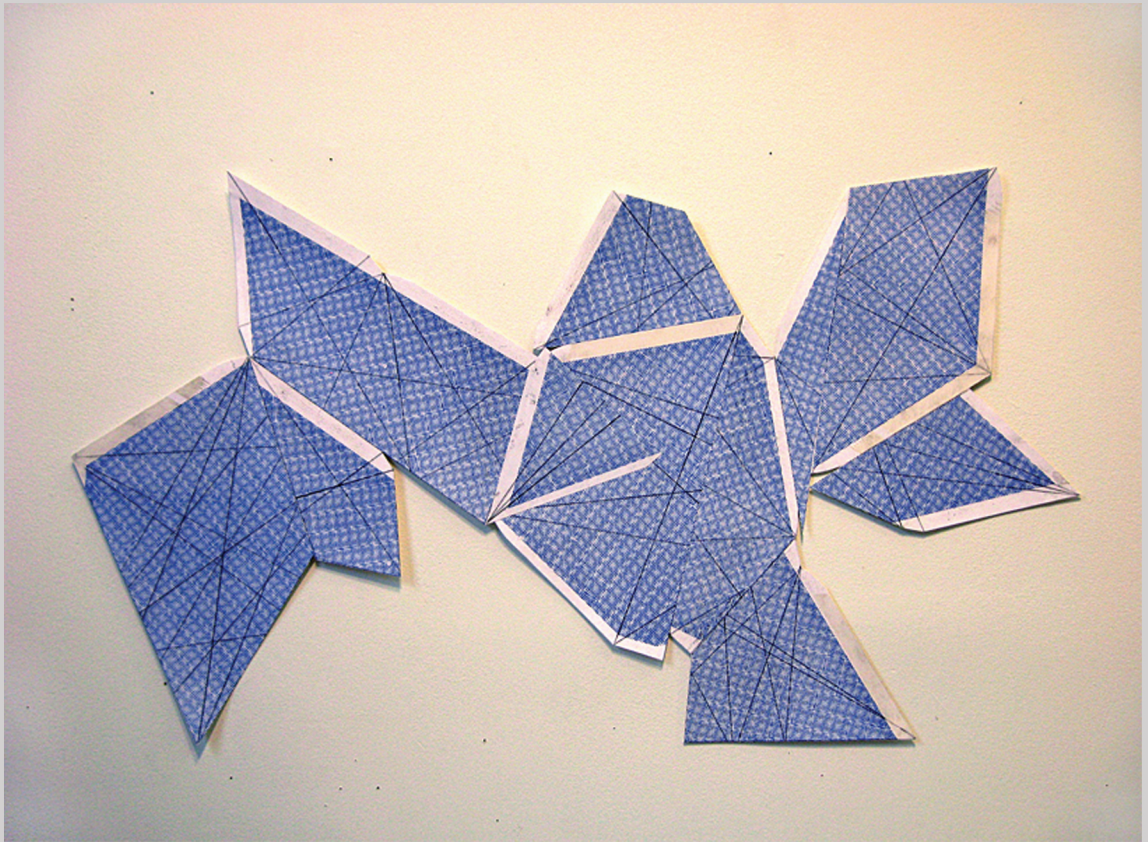
Ben Pranger

“Whirlwind Revelation”

wood

75” x 45” x 33”

2009



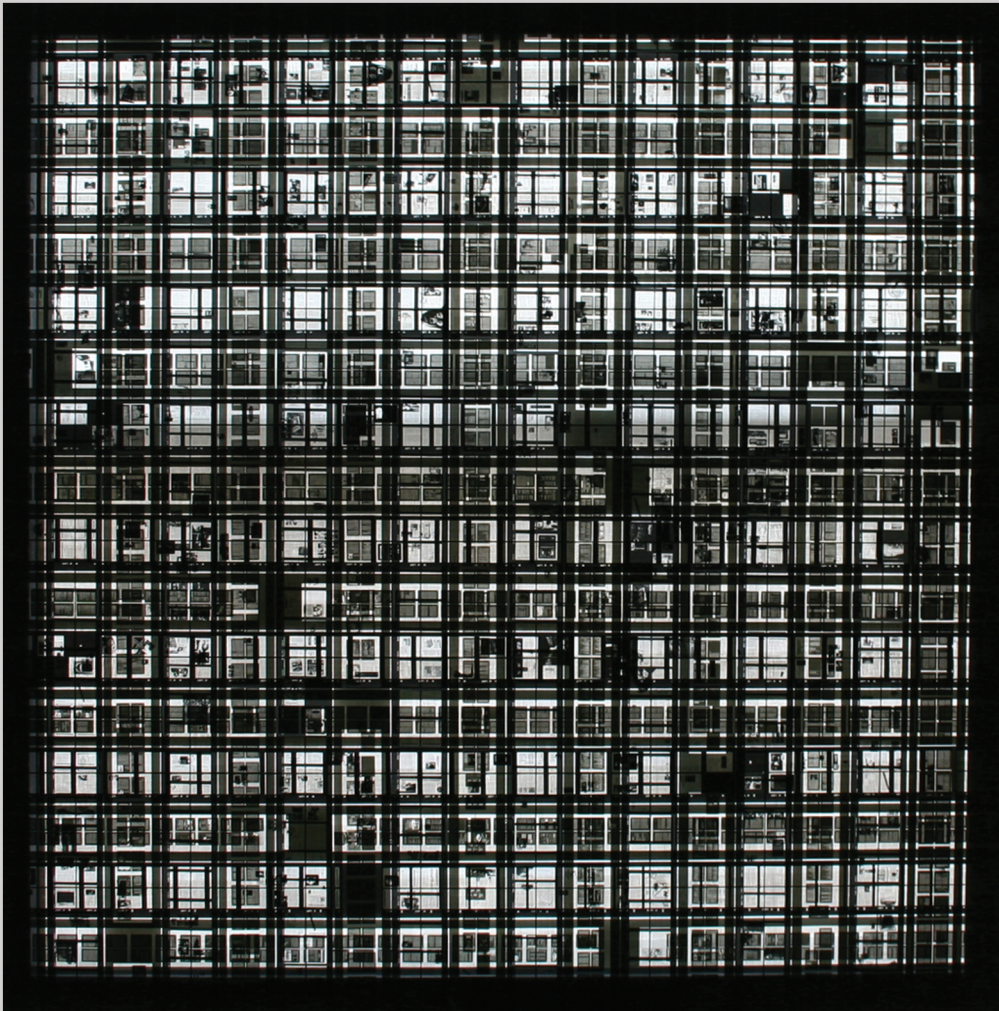
Ryan Russo

"Untitled (2)"

graphite on cut envelopes

16" x 26"

2011



Tore Terraşi
“Grid Study”
woven microfilm
24” x 24”
2011



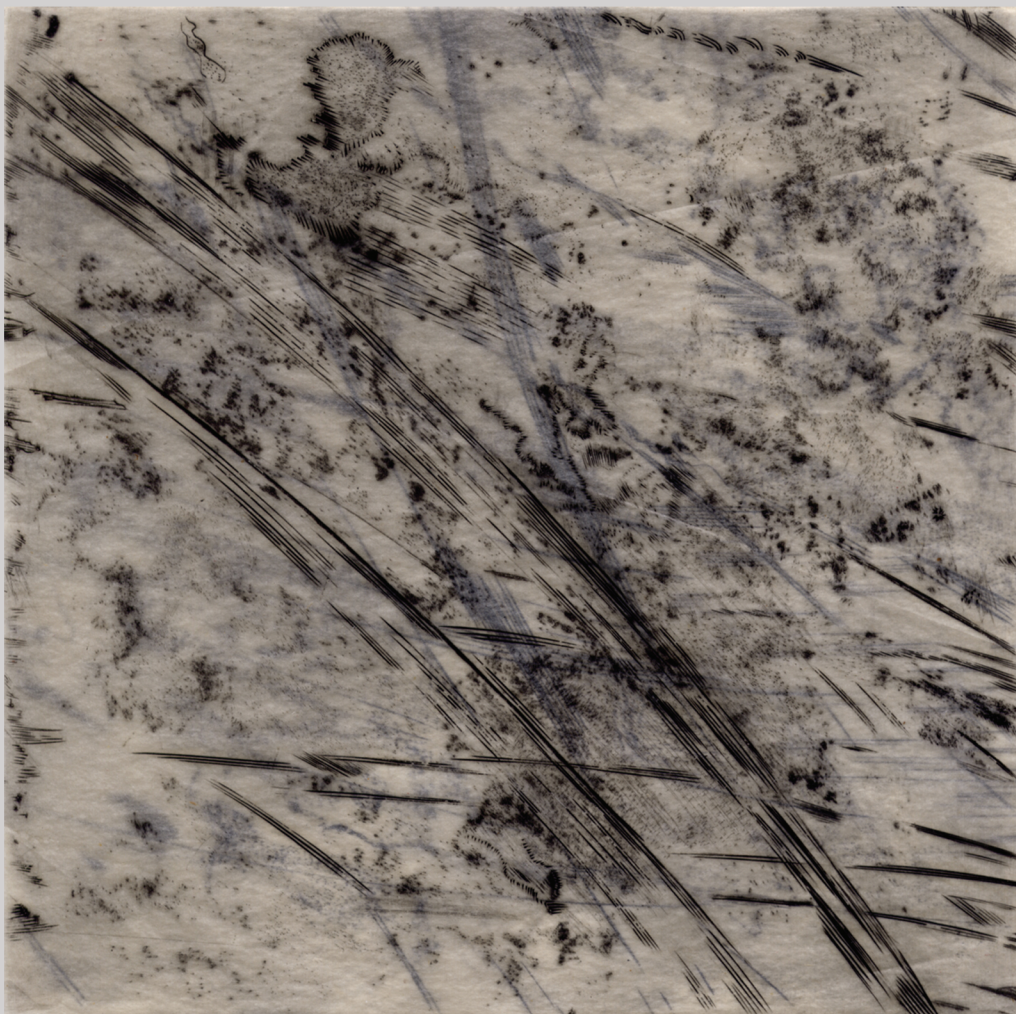
Amanda Thackray

“Spring Cleaning”

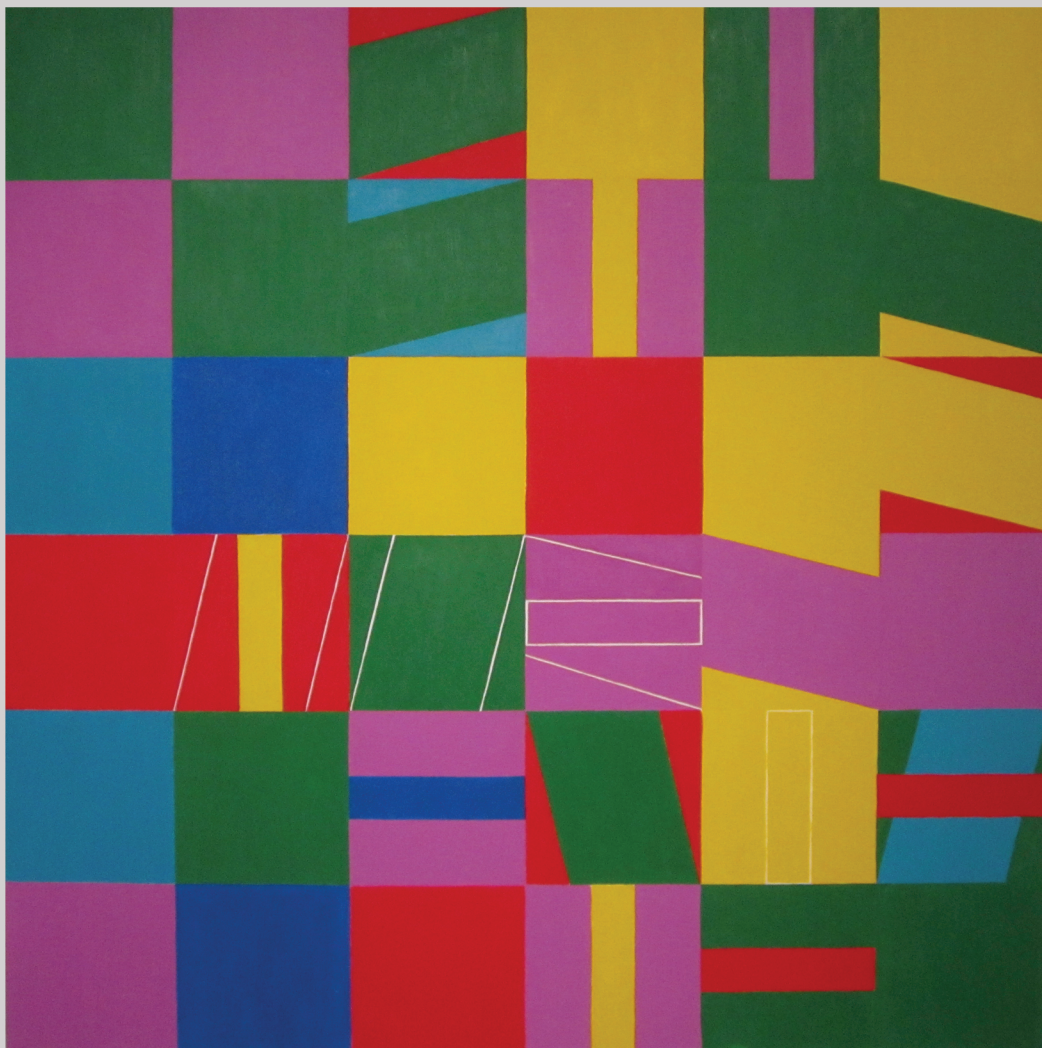
plastic containers, bug carcasses and dust

dimensions variable

2007



Star Varner
"Crossed Paths (6.1/8.2)"
engravings on silk tissue
7" x 7"
2011



Kati Vilim

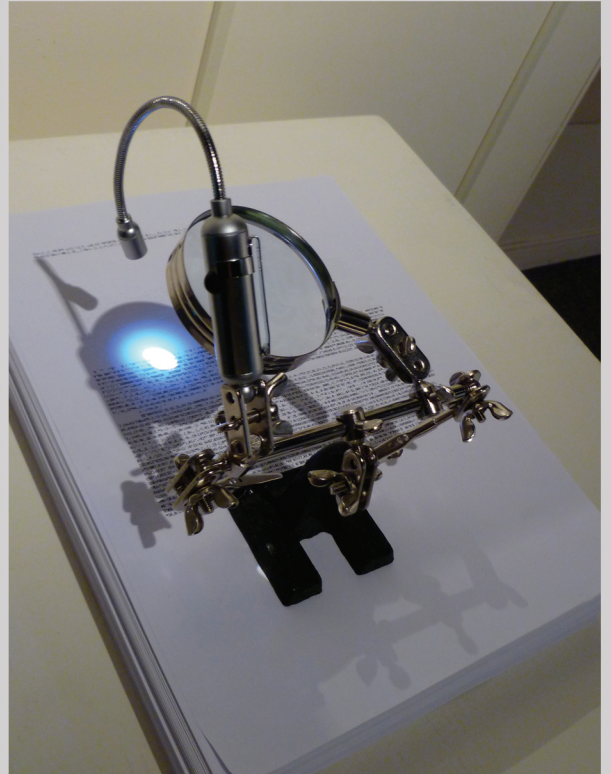
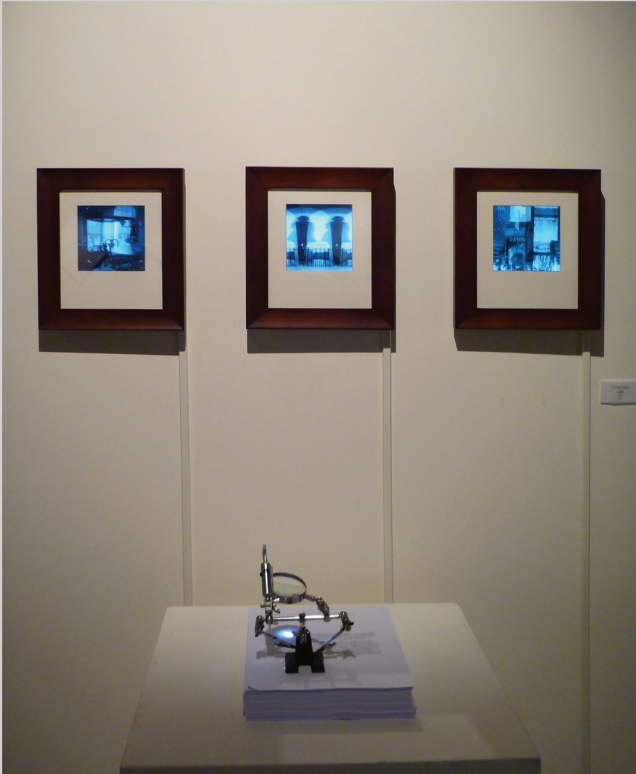
"36 Squares"

oil on canvas over panel

48" x 48"

2011

image courtesy of Jeanne Brasile



C.J. Yeh
"CJ Was Here - to the Kingdom if I Could"
mixed-media installation
dimensions variable
2011





The Walsh Gallery extends its gratitude to the following supporters that have made this exhibition possible:

Alma Banyai
Xueming Bao
Frank Capra
Sharon Favaro
Jennifer Graham-Macht
Dr. Chrysanthy Grieco
Nicole Halliwell
Catriona Hill
Brittany Martinez
Katie Mascari
Elisabeth Murray
Michael Villanueva
The Walsh Gallery Advisory Board

