

Article

EID

The strategic economic governance of Greater Manchester's local labour market by the local state: Implications for young workers

Economic and Industrial Democracy
1–23

© The Author(s) 2018

Reprints and permissions:

sagepub.co.uk/journalsPermissions.nav

DOI: 10.1177/0143831X17744647

journals.sagepub.com/home/eid



Edward Yates

University of Leicester, UK

Ian Clark

Nottingham Trent University, UK

Abstract

This article explores how work and employment conditions for young workers are affected by the actions of the state at the spatial scale of the locality. The article argues that young workers have experienced deteriorating labour market conditions following shifts in the form which capitalist accumulation takes in the UK. This shift has altered the composition of the national state which has in turn led to changes in how it regulates both local labour markets and the economic strategies of the local state. One result of these changes is the diffusion of neoliberal labour market reforms which have led to negative material consequences for young workers; these are manifest in the expansion of low-waged work concentrated in a small number of sectors, and characterized by an intensified labour process.

Keywords

Economic change, employment, local labour market, local state, young workers

Introduction

This article connects work and shifts in the political economy of the British state by exploring how work and employment conditions for young workers – those aged 16–24¹

Corresponding author:

Edward Yates, Centre for Sustainable Work and Employment Futures, University of Leicester, Fielding Johnson Building, Leicester, LE1 7RH, UK.

Email: ey29@le.ac.uk

– are affected by the actions of the state at the ‘spatial scale’ of ‘the locality’. *Spatial scale* in this sense refers to the geographic spaces within which capitalist processes occur, as well as referring to where labour concretely experiences the outcomes of capitalist processes (Harvey, 1989a, 2006). The spatial scale of the *locality* is important because it is at this scale that key social processes occur, most notably: the reproduction of household economies, provision of state welfare services, and paid labour, which is characterized by a varied labour process. A focus on the *state* is insightful because it is the local state which is immediately responsible for confronting the contradictory outcomes of capitalist production and the labour process within a locality.

We argue that since the early 1980s young workers have experienced worsening labour market conditions due to shifts in processes of capitalist accumulation – from what this article calls ‘full-employment’ capitalism to neoliberal capitalism. This shift is characterized by an aggressive re-assertion of the power of capital which manifests in the labour process, labour markets, and at the level of state action. Neoliberal capitalism is also marked by the tendency of capital to accumulate surplus value through the appropriation of value, rather than through the productive accumulation of value (Fine, 2013). Full-employment capitalism saw a contested diffusion of mass production and mass consumption integrated within a broadly defined but equally contested political compromise between state planners, capital and labour. Accumulated capital in the form of profit was then appropriated from existing value produced by labour; this circulation of productive capital redistributed surplus-value to labour via productivity gains, and to capital via investment in capital stock. The compromises which facilitated full-employment capitalism as an accumulation regime became unsustainable from the 1970s onwards as falling rates of profits led to increased class conflict, which in turn has resulted in a falling labour share of income and a re-commodification of labour (Stockhammer et al., 2016; Thompson, 2013). The re-composition of the state and associated processes that result from these shifts in accumulation impact on the form of labour market intervention, associated regulations, and on the very capacity of the state *to* intervene, particularly at the level of the local state, which has undergone substantial transformation (Brenner, 2004; Greer, 2016; Hastings and Heyes, 2016). Accordingly the article addresses two research questions. First, in what ways do changes in local governance and associated changes in the political economy of work ground and re-focus capitalist accumulation away from the nation state towards capital – a shift from ‘full-employment capitalism’ towards neoliberal capitalism? Second, what is the impact of these changes on young workers in Greater Manchester?

Why Greater Manchester? Why young workers?

The metropolitan county of Greater Manchester² was selected as a focus of study due to the character of its political economy: the county experienced a period of marked decline throughout the postwar period, reaching a nadir in the 1980s, as deindustrialization led in 1983 to long-term unemployment rates of 47.6% for men and 29.8% for women (Peck and Emmerich, 1992: 29). Since the 1980s local state managers have presented an image of the county which highlights its renaissance from deindustrialization to that of a successful, ‘post-industrial’ county characterized by a diverse local economy (McDermot,

2015). Local elites – in particular local state executives and members of prominent local business fora – point to the Greater Manchester Devolution Agreement, in which the county gains greater oversight of £7 billion of central government funding and increased retention of business rates revenue, as the culmination of the success of their local economic strategy (HM Treasury, 2014). However, Greater Manchester is affected by high and increasing levels of low-paid employment³ (New Economy, 2015), rising inequality (Centre for Cities, 2014) and an absence of affordable housing (Greater Manchester Combined Authority [GMCA], 2015). All three of these social outcomes are felt most keenly by young people (Clark and Heath, 2014). By focusing on the role of the local state in shaping labour market outcomes this article reveals how the imperatives of capitalist accumulation cajole the state to pursue economic strategies which affect different types of labour differentially, leading to differentiated labour processes.

The established literature suggests a worsening of labour market conditions for young people – as of 2016 the UK youth unemployment rate is 13.7%, which is 2.7 times higher than all-age unemployment⁴ (Office for National Statistics [ONS], 2016) and the youth unemployment ratio is 20.2%; an historical high in the UK (O'Reilly et al., 2015). Similarly, while 21% of all-age workers in the UK are in low-paid employment, that figure is 40% for workers aged 21–25 and 77% for workers aged 16–20 (Clarke and D'Arcy, 2016: 20). To explore the research questions, the article is divided into four parts: part one provides an overview of shifts in the British state and defines the term the 'local state'. Part two contains an empirical overview of Greater Manchester's governance arrangements, particularly those which relate to local economic governance. Part three provides empirical evidence to demonstrate how local economic strategies affect labour market outcomes for young workers. Part four contains a discussion which examines the limits of these strategies, and is followed by a conclusion.

Research methods

This research is based on findings from a local labour market study of the metropolitan county of Greater Manchester undertaken in 2015–2016 which draws on 32 semi-structured interviews with local state officials and politicians, local entrepreneurs and CEOs. The interviews were transcribed and coded in order to carry out systematic thematic analysis. In addition to this primary research extensive desk research was undertaken to examine existing local policy documents, economic reports and data-sets.

Neoliberal capitalism and a transformed state

The two research questions connect work and the shift in the political economy of the British state by outlining how the move from full-employment capitalism to neoliberal capitalism is grounded in the labour market experiences of young workers. The article outlines the motives and instruments of the shift in the class character of the state and specifies how some of these macro-level changes are grounded in deteriorating employment opportunities and by association worsening labour process experiences at work. The contemporary British state promotes austerity and welfare retrenchment policies which create significant labour market inequalities, such as low-paid, precarious work

which particularly affects young workers (Papadopoulos, 2014; Selenko and Pils, 2016). These labour market conditions are enabled and facilitated in part by the decline of embedded liberal policies which existed under full-employment capitalism (Crouch, 2011; Harvey, 2007; Standing, 2011). The institutional structure of Britain's political economy in the postwar period meant that 'embedded liberalism' (Brenner et al., 2010) positively restrained the entrepreneurial zeal of capital by the application of active economic and industrial strategies such as capital controls, wage councils and sectoral level collective bargaining (Brown et al., 2009). These features were complemented by the institutional power of trade unions, which afforded workers the structural capacity to resist degradation of work and employment imposed on labour by capital.

Young workers benefitted in this period from the presence of well-developed internal labour markets within large firms, characterized by established training schemes and well-defined entry points for young workers (MacDonald, 1998). These conditions were particularly evident in the public sector (Winchester and Bach, 1999), and in engineering firms (Clements, 1958). Job opportunities in these sectors for young people were often 'sheltered', meaning that competition was restricted to young people (Ashton et al., 1990). However, while embedded liberalism delivered good economic performance up until the 1960s it began to break down in the early 1970s, when supporters of what is now termed neoliberalism were poised to free capital from broader socio-economic commitments established in Britain's postwar full-employment state.

Neoliberalism is a broad-ranging political project which, under Thatcherism in the UK, centred on 'disembedding' markets from political constraints associated with embedded liberalism to focus on deregulation, privatization and the creation of new markets through sustained financial deregulation and liberalization (Crouch, 2011; Harvey, 2007: 19–30). Neoliberal elites have unravelled the UK's postwar economic settlement which informed the embedded liberalism of full-employment capitalism; a shift which encountered no significant bloc of business opposition lobbying for an alternative corporatist or coordinated policy (Van der Pijl, 2006, 2015). This shift resulted in the emergence of a globally focused neoliberalism which has dismantled collective structures for labour, the local state and associated communities.

For labour a particular effect of these shifts and transitions relates to the transformed role of the British economy in a new international division of labour (Charnock and Starosta, 2016) and the attractiveness of Britain for inward foreign direct investment (FDI). Multinational firms are encouraged to set up branch plants which are subject to intra-firm internationally focused competition for work within dispersed global value chains (Hammer and Riisgaard, 2015: 84–85). Between 2010 and 2016, approximately 17,994 jobs were created as a result of inward FDI investment in Greater Manchester, meaning that inward FDI was responsible for approximately 19% of new jobs created in the period (Manchester Inward Development Agency Service [MIDAS], 2016). There are opportunities for young workers to find employment resulting from inward investment, although the benefits of such work are skewed heavily in favour of capital due to limited capacity for resistance from trade unions, which were formerly able to reduce wage differentials between high and low earners within sectors (Blanchflower and Bryson, 2010). As our empirical research demonstrates, many young people in Manchester are employed not in 'headline' sectors of finance or advanced manufacturing, but in more elementary

Table 1. Employment of 16- to 24-year-old and all-age workers in Greater Manchester, by sector.

Employee jobs by sector	Employees aged 16–24 in Greater Manchester (%)	All-age employment in Greater Manchester	Greater Manchester (%)	North-West Region of Great Britain (%)	Great Britain (%)
Total employee jobs	167,233 (100)	1,196,900	100.0	100.0	100.0
Primary services:	2005 (1.1)	500	0.0	0.1	0.4
Agriculture and mining (A–B)					
Energy and water (D–E)		12,800	1.1	1.0	1.1
Manufacturing (C)	8808 (5.3)	104,700	8.8	10.3	8.5
Construction (F)	11,031 (6.6)	50,400	4.2	4.5	4.5
Wholesale and retail, including motor trades (G)	67,979 ^a (40.6)	190,800	15.9	16.2	15.9
Transport storage (H)	8772 ^b (5.3)	57,400	4.8	4.5	4.5
Accommodation and food services (I)	–	75,300	6.3	7.1	7.1
Information and communication (J)	–	37,800	3.2	2.7	4.1
Financial and other business services (K–N)	26,492 (15.9)	288,800	24.1	20.5	22.2
Public admin, education and health (O–Q)	29,921 (17.9)	326,100	27.2	28.5	27.4
Other services (R–S)	12,225 (7.3)	52,400	4.4	4.5	4.4

Source: UK Census 2011; ONS Business Register and Employment Survey (BRES).

^aThis figure includes accommodation and food services workers.

^bThis figure includes information and communication workers.

sectors including business services, care and retail and hospitality. Within these sectors young people tend to find themselves employed in low-paid, lower occupational roles, a trend which is increasing: 40.6% of young people in Greater Manchester work in the retail and hospitality sectors, and 55% of young people work in sales, customer service and elementary occupations (see Tables 1 and 2).

The capacities of the local state

Shifts in British political economy directly affect the composition of the local state. In the 1960s the British state diffused ‘spatial Keynesian’ redistributive policies designed to aid underperforming economic regions (Brenner, 2004; Martin and Sunley, 1997). The re-assertion of capitalist power under neoliberalism saw a renewed state windup these policies. Instead localities began to engage in ‘entrepreneurial urbanist’ strategies which relied on securing private capital to fund local economic development as public funding from central government declined (Harvey, 1989b). This reliance causes local economic

Table 2. Occupations of 16- to 24-year-olds in Greater Manchester, 2011.

Occupation	Age 16 and over in each occupation	Age 16–24 occupation	Percentage of 16 and over in each occupation (%)	Percentage of 16–24 who work in each occupation (%)	Percentage of each occupation made up by 16- to 24-year-olds	Change since 2001 of percentage of each occupation made up by 16- to 24-year-olds
All categories	1,223,865	167,233	100%	100%	14%	-1
1. Managers, directors and senior officials	115,717	5611	9%	3%	5%	-1
2. Professional occupations	202,432	11,640	17%	7%	6%	-1
3. Associate professional and technical occupations	146,373	16,246	12%	10%	11%	-1
4. Administrative and secretarial occupations	146,473	18,749	12%	11%	13%	-2
5. Skilled trades occupations	129,634	16,432	11%	10%	13%	-1
6. Caring, leisure and other service occupations	119,786	19,645	10%	11%	16%	-1
7. Sales and customer service occupations	122,012	40,415	10%	24%	33%	0
8. Process, plant and machine operatives	97,547	6160	8%	4%	6%	-3
9. Elementary occupations	143,891	32,335	12%	19%	22%	+2

Source: UK Census 2001; UK Census 2011.

strategies to become competitive in the pursuit of capital investment and in order to secure funding bids (Cochrane et al., 1996, 2002). Local councils can experience sudden and unexpected cuts to their budgets as a result of central government executive control over local government spending levels (Lowndes and Gardner, 2016). This financial insecurity means that local councils have to actively pursue growth-orientated strategies which rely on the private sector. These circumstances have worsened since 2010 due to the increased ferocity with which local government cuts have been implemented, stimulating the argument that central government has ‘locked-in’ neoliberal measures at the local level (Peck, 2014).

In spite of these structural limitations on its actions, it is the local state which confronts the immediate consequences of capitalist accumulation. The local state is charged with managing and maintaining the ‘production–reproduction nexus’ (PRN) within a locality. The PRN is defined as the ‘interrelationship between production and reproduction via the labour force in a geographic territory’ (Gough, 2014: 28). The strategies pursued by the local state to achieve this can be characterized in two broad categories: neoliberal and social democratic. Neoliberal strategies promote the flow of all capitals and emphasize discipline over labour via enhanced mobility, spatial fragmentation and increased competition. In turn these strategies focus on the reduction and equalization of factor costs and final prices and effectively use the national state to minimize regulation by the local state (Gough, 2004: 203). This approach subordinates the local state to individual capitals and capital in general by expanding the influence of value relations at the local level; the local state must engage with capital in order to maintain social production and reproduction, although this can result in increased commodification and marketization of social life. In contrast to neoliberal strategies, social democratic strategies are characterized by the creation of socio-economic organizations designed to increase productivity and foster cooperation between labour and capital. The aim of this approach is to promote a qualitative differentiation between local economies and the autonomy of the local state from capital to secure accumulation on a more independent political footing (Gough, 2004: 205). The local state can attempt to achieve this aim by promoting the growth of specific sectors of the local economy, or by encouraging the incorporation of other stakeholders – such as community groups and trade unions – in the governance of the local economy.

The outcomes of local economic strategies are heavily contingent on a number of factors. For example, the local state may attempt to create ‘decent jobs’ in the private sector by promoting the growth of particular high value-added sectors to re-orientate its local economic structures so that they assist the accumulation of private capital. Local state managers seek to achieve this by creating a subsidized investment climate. Measures associated with this include subsidized business rates and associated financial incentives, a well-developed transport infrastructure, and a suitably skilled labour supply (MIDAS, 2016). However, these local conditions are to the advantage of firms which operate a business model which is characterized by low-wage, low value-added growth. Evidence from existing research shows that there is a tendency for this to occur as firms which are attracted by financial incentives are often those with low levels of productivity and which have a proclivity to engage in rent-seeking behaviour (Sonn and Lee, 2012). This means that the firm will take financial incentives that are offered without attempting to generate correspondingly high levels of employment for the local economy.

The governance of Greater Manchester's local labour market

The contemporary governance of Greater Manchester is the result of historical processes of transformation which began with the 1985 abolition of the 'municipal socialist' Greater Manchester County Council, which was hostile to working with either central government or private capital (Quilley, 2000). Abolition led to the creation of the Association of Greater Manchester Authorities (AGMA), which in turn ushered in a period of 'elite localism' (Cochrane et al., 1996) wherein local government began to cooperate closely with national government and private sector capital (Peck and Ward, 2002). In spite of the limitations of this approach to local governance,⁵ the development of Greater Manchester in recent decades is viewed as a success by local state managers who point to its economic growth in comparison to neighbouring city-regions, such as Liverpool or Leeds–Bradford (McDermot, 2015). In successfully overcoming the high unemployment of the 1980s, Manchester's state managers argue that a post-manufacturing local economy has developed where a majority of employment is in the service sector. One local economic manager suggested that this was partially due to:

... a sense of [voluntary] collaborative working in Manchester's [local government] that far exceeded that of Liverpool and Leeds–Bradford, [which along with] Sheffield have not taken off in [the] same way as Manchester. (Interview, director of economic strategy, local university, 11 January 2016)

The manner in which capital informs and shapes the strategic direction of governance in the county is evidenced in the central role of the Greater Manchester Local Enterprise Partnership (GMLEP). According to its own official statement of intent, the GMLEP sits 'at the heart of Greater Manchester's governance arrangements, ensuring that business leaders are empowered to set the strategic course, determine local priorities and drive growth and job creation within the city-region'⁶ (GMLEP, 2015). The GMLEP is made up of two local councillors, the mayor of Greater Manchester and nine representatives from the private sector. The GMLEP has no representatives from voluntary organizations or trade unions, despite a White Paper recommending the inclusion of these groups (Ward, 2014). Along with the AGMA, the GMLEP is responsible for overseeing the Manchester Growth Company (MGC). The MGC is made up of a number of companies which promote economic development across the county in six priority functions: strategy and research; marketing; business support and finance; organization development services; skills; and employment (see Figure 1 for a visualization of this).

This network of governance actors aims to ensure continued economic growth through the promotion of Greater Manchester as a site of investment with favourable conditions for capital. This approach can be understood as an attempt to overcome the limits of economic governance in Greater Manchester in the 1990s, which shifted too much power directly to the private sector. Instead, the MGC seeks to govern the local economy for and on behalf of private capital. Rather than allowing private capital to directly govern the county, the local state has established a series of quasi-autonomous bodies which are

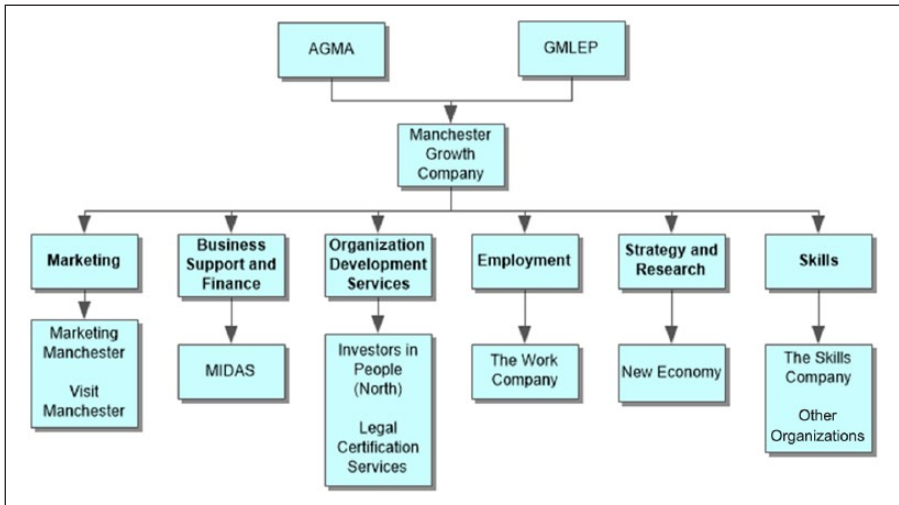


Figure 1. Structure of the Manchester Growth Company.

Source: MGC website; AGMA.

shielded from popular pressures and which have the broad aim of advancing the rate of capital accumulation within the locality. This was acknowledged by one planner, who stated that:

... you can never really expect business leaders to run the state, that's not what they do ... they run businesses and let's hope they keep doing it. So how [do] you co-opt, in a non-executive fashion, functioning of business leaders? It's [through] the [GM]LEP. (Interview, senior strategic planner, AGMA, 4 February 2016)

Both the MGC and the GMLEP are unaccountable to the electorate and sustain self-determining governance structures which are a form of neoliberal, depoliticized local governance in which power is transferred from elected officials to unaccountable institutions (Burnham, 2001). One local councillor voiced concerns on the diminished role that local councillors have as a result of shifts in governance, in which decision-making power has been transferred from elected representatives to the executive branch, and business leaders:

... we're cardboard cut-outs – [the executive] wheel us out when there's a meeting, we stick our hands up and say yeah, and go home. ... I've felt totally surplus to requirement for ages now, and I get the impression that many councillors do but won't admit it. (Interview, local councillor, 8 February 2016)

The limited capacity of the local state to intervene in order to generate progressive local labour market outcomes was described succinctly by the head of research at a local economic development agency, who stated that:

... 90% of what happens in Greater Manchester [local government] has no control over. (Interview, head of research, local economic development agency, 9 March 2016)

The limited capability of the local state does not mean local state actors believe their actions are completely ineffectual. Local officials are proud of their achievements; this is demonstrated in interview data:

One of our pitches post-recession has been about costs, [businesses have] access to highly skilled graduates, and the cost[s] of doing business [in Greater Manchester] are about 40% lower than London, because of property costs, wage, salary costs. That's a massive pitch – we've seen a lot of businesses who have relocated out of London – not [head offices] – but back-office [functions] ... economic growth in the city has [come from], less known companies relocating here. (Interview, council development officer, 4 April 2016)

Other officials spoke of the way in which they have successfully sought to interact with and condition young workers in the locality:

[We] recognized that businesses have changed over time [and we have had to] respond to these changes. Apprenticeships have to [go] where jobs are, in financial [and] business services, and health and social [care] ... part of our youth policy work is working alongside schools so they understand careers available for young people in Greater Manchester when they leave. (Interview, senior planner, economic development agency, 2 May 2016)

This latter point was expanded upon by another official, who stated that one aim of local youth initiatives was to 'manage the aspirations' of young people, as 'graduates expect too much from labour markets' (Interview, local planner, economic development agency, 1 June 2016). The fact that local officials seek to shape the perceptions of young people so they are better suited to working in a low-wage labour market demonstrates that officials do not foresee the quality of jobs in Greater Manchester improving in the medium- to long-term.

Strategies of economic growth

The pressures of entrepreneurial urbanism mean cities must engage in competitive growth policies in order to prevent urban decline. In Greater Manchester key strategies for economic growth centre on the extension of labour market reforms, in particular those focusing on moving the economically inactive into work, and on up-skilling the labour force. The result of these strategies is mixed and leaves some young workers languishing in low-quality employment. For example, Greater Manchester's eye-catching aggregate growth figures⁷ mask the qualitative form which employment growth has taken in the county. The strategy of economic growth that is pursued in Greater Manchester is based on efforts to develop its internal capacities, notably through infrastructure development and promotion of 'headline' sectors in which the county has a competitive advantage. These sectors include advanced manufacturing, finance and professional services, health sciences, and the digital sector (New Economy, 2016a). The growth of these sectors is supported by the MGC which provides local boosterism and

support to existing businesses through its ‘Growth Hub’ business innovator⁸ (AGMA, 2009: 28).

Efforts by state managers to promote headline sectors aim to coordinate and regulate economic growth, directing resources into prescribed sites and sectors. These strategies are limited, in part because they downplay the significance of the relationship between cities and wider socio-economic processes at other spatial scales, in particular between Greater Manchester and speculative financial flows, as well as the skewed relationship between the local and national state which favours the latter. Therein local policy development is limited as local state managers are unable to respond to external shocks or abrupt national policy shifts, or to challenge deep-rooted problems which are the result of historical political economy. As a result changes in industrial composition in Manchester have embedded concentrated areas of enduring unemployment. A narrative which emerges from interview data is the belief among local planners that economic growth will lead to further devolution of powers from central government which will allow them to act with greater autonomy, so as to further grow the economy. This optimism is evident in the quote below:

I think [the local government executives] are better here [at handling devolved powers] than anywhere else ... and have achieved an incredible amount over the last five years ... in terms of being able to control more of [Greater Manchester’s] destiny, and that’s a significant step, and has been the narrative [for] 10 years, but in [the] last few years it has significantly been a step change ... and that does enable better long term planning. If you give Manchester more powers, it will compete more with other cities ... I would welcome more [inter-city competition], different tax rates, different branding, different ways of competing for population, for talent, for industries, for sectors ... [it’s] how America made itself great, and the more you get in the UK, the better. (Interview, former head of strategy, economic development agency, 6 January 2016)

The limitations of devolution as a strategy are not countenanced by local planners, possibly as doing so would undermine the dominant narrative of Greater Manchester as a successful city, as well as upsetting more fundamental ideas upon which the growth and reform strategy is built, chiefly that *any* growth is good as it will lead to long-term economic independence.

Extending existing labour market reforms

British labour markets have experienced waves of reform in recent decades as part of ongoing processes to stimulate labour productivity in order to enhance the competitiveness of UK-based capital. Across Greater Manchester 22% of the labour force is educated to national vocational qualification (NVQ) level 2 and 32% are educated to NVQ level 4 or higher, while 11.6% have no qualifications at all. This compares unfavourably to the national picture (20%, 36% and 9% respectively [ONS, 2014a]). Low levels of skills among the labour force are seen as a problem by local elites. According to official documentation:

... a quarter of the productivity gap between Greater Manchester and the UK as a whole [is] caused by higher than average levels of worklessness and low levels of economic activity. The other three quarters [are] caused by lower levels of economic output, with people in work not

as productive as elsewhere in the country. *Low skill levels are a key contributing factor to this.* (AGMA, 2013: 11, our emphasis)

Labour market weaknesses are identified by local state managers as a key factor which prevents the county from achieving high growth rates. The strategy to overcome these weaknesses centres on active labour market policies to tackle perceived 'worklessness' and a focus on improving the skills base of Greater Manchester. This approach targets workless labour and is generalized from contemporary national policy which focuses on austerity, retrenchment and the re-commodification of labour as part of a 'skills as welfare' agenda⁹ (Nunn, 2008). These aims witness the introduction of policies which have the effect of coercing individuals back into labour markets, often through disciplinary measures such as removal of welfare benefits. These measures exemplify neoliberal approaches to labour which eschew any attempt to understand or resolve the complex and multi-faceted reasons why individuals might become workless, and instead individualize the negative consequences of unemployment onto the unemployed (Nunn, 2012).

Local economic outcomes

A key question is whether the application of neoliberal strategies by local state managers has been successful in increasing productivity, and if mechanisms exist for increases to be distributed among workers. Although gross valued added (GVA) has increased across the county, it does not follow that there are equal rises in productivity across all sectors. In reality, the majority of sectors in Greater Manchester's local economy are characterized by lower than average GVA per job. The sectors of the local economy which have facilitated economic growth are a mixture of aforementioned headline sectors, but are also sectors which are characterized by low-wage, low-productivity employment. The five sectors with levels of productivity lower than £30,000 per job in Greater Manchester 'correspond with the lowest paying sectors ... [and these] low productivity sectors account for a growing share of jobs. In 2000 they represented 35% of employment. By 2014 the proportion was 40%' (New Economy, 2016a). The five elementary sectors are: hospitality, retail, accommodation, cleaning and residential care. Low productivity sectors such as these are characterized by accumulation strategies with limited potential for productivity growth as surplus is generated through the intensification of the labour process and squeezing returns to labour. Employers in these sectors pursue 'low value product market strategies' where competition is based on 'on low cost, low skill, low specification products and services' (New Economy, 2016a; UKCES, 2013).

Evidently an accumulation strategy based on low productivity, labour-intensive work with low levels of technological investment leads to a local occupational distribution which is skewed towards de-skilled, low-waged, low-discretion jobs for many young people. This is demonstrated by the data in Tables 1 and 2, which highlight the sectoral and occupational distribution of young workers in Greater Manchester. Young workers are nearly twice as likely to be employed in elementary occupations as all-age workers, and young workers make up 22% of the workforce in elementary occupations. Additionally, young workers are nearly 2.5 times as likely to be employed in sales and

customer service occupations as all-age workers, and make up 33% of this occupational workforce. In the period 2001–2011 there was a 1% reduction in the numbers of young workers employed in the top three occupational categories, alongside a 2% rise in numbers of young workers employed in the lowest occupational category (see Table 2). Sales and customer services occupations are predominantly found in the retail sector, which has an average weekly wage of £344. This weekly average is significantly lower than for the public sector (£504), finance and business services (£635), or for the service sector in general (£488) (ONS, 2017). Additionally, young workers in all sectors are affected negatively by the national minimum wage, which institutionalizes lawful discrimination based on age.

The labour process in elementary occupations restricts productivity increases due to the application of de-skilled labour-use strategies for youth workers. In the business service companies which were studied, young workers engaged in a labour process characterized by one or two tasks – such as answering calls, processing customer service requests, or inputting data – which were repeated throughout the day. Worker discretion was low and attempts to raise productivity took the form of intrusive workplace surveillance which ranged from listening in on phone-calls, random sampling of workplace documents for quality checks, to unannounced observations of work throughout the day. These interventions, coupled with the use of open-plan office space and target-based performance management, creates a generalized atmosphere of ‘pressure’ and ‘unease’ for young workers (Interview notes, office manager, business services company, 15 April 2016). One young worker employed at a business-to-business (B2B) call centre described their employer as being ‘totally unethical, from top to bottom’ due to the arbitrary way in which line managers displayed favouritism towards staff when allocating bonuses, and when disciplining staff for alleged underperformance. In the same interview it was noted that younger staff were perceived by line managers as being ‘less trustworthy ... [and] unreliable ... [than] older team members’ and as a result their work was more closely scrutinized (Interview, call centre worker, B2B sales company, 21 September 2016).

Greater Manchester reflects the national picture where the absence of sustained re-investment in the capital stock has successfully squeezed labour costs directly in the labour process because many jobs in manufacturing and services are highly de-skilled and subject to significant work intensification, fragmentation and ‘flexibilization’ (Rubery, 2015). UK national accounts demonstrate that since 1982 the wage share of national income has been less than 56% whereas in the 1970s it rose as high as 61% of national income (OECD, 2015). The wage share is defined to include wages and non-wage benefits such as pensions and national insurance contributions. These inclusions are important because pensions and national insurance payments represent reproduction costs for labour. For capital the motive to devalue labour is ultimately to boost short-term profits, whereas the motive for austerity and welfare retrenchment is to reduce the cost of reproducing labour-power for capital and the state via the re-commodification of labour. The outcome of these neoliberal policies has been an increasing debt burden for labour, as it seeks to sustain consumption levels. These trends are evident in Greater Manchester, which is ranked third nationwide for levels of individual indebtedness: 41.1% of Manchester residents are classed as over-indebted and 21% of these are aged 18–25 (Money Advice Service [MAS], 2013).

Growth in service sector employment is influenced by the availability of labour rather than by capital stock; accordingly there is an abundance of cheap, available labour in Greater Manchester in the form of young workers. The elementary sectors act like a ‘sponge, soaking up’ workers into low-productivity jobs, rather than acting as a sector which supports the development of more productive employment (Erdem and Glyn, 2001: 53–60). In Greater Manchester the supply of young workers has been indirectly increased by the local state due to the freedom it has afforded to property developers to construct numerous private rental apartments in Greater Manchester’s city-centre which are occupied almost exclusively by young workers (Folkman et al., 2016).

Notwithstanding the growth strategy for Manchester resting on lower productivity jobs, the skills shortage is seen by local state managers as a significant labour market problem limiting productivity increases across the county. This tension is illustrated by documents which advocate the need to ‘bridge the skills gap’ and ‘overcome skills mismatches’ (AGMA, 2009, 2013). Specifically, skills policy takes the form of attempting to increase the numbers of workers with NVQ2+ qualifications as Greater Manchester has above national-average levels of workers with no formal qualifications. In part, this focus on skills comes from surveys of local businesses across the county, which found that local employers viewed skills shortages as the biggest barrier to growth (New Economy, 2016b). As a result skills policies are distinctly employer-led, and have at the core, the aim of improving business growth. As the 2013 *Stronger Together* strategy document states: ‘[AGMA] will bring employers together with providers and government agencies to narrow the gap between what employers want and what the skills system is able to deliver’ (AGMA, 2013: 50). The aim of this skills strategy is to respond narrowly to pre-existing employer needs, thereby reinforcing the influence of private employers and reinforcing the current form which capital accumulation takes in Greater Manchester. As one strategic planner remarked:

... if you rib most politicians not too hard, [and] you say ‘would you rather have lots of jobs, or less jobs but better jobs?’ they’ll all say lots of jobs, always ... I think that everywhere you do see the hourglass economy, you do see the high competition for high quality jobs, which Hoover up more and more of the wealth essentially, of the capital spend ... and you do see higher volumes of lower [quality] jobs. (Interview, former head of strategy, local economic development agency, 6 January 2016)

Labour market outcomes for young workers

Young workers in Greater Manchester are affected both indirectly and directly by the actions of the state. Indirect effects are outcomes of the economic strategy pursued by the local state, such as its neoliberal approach to sectoral development which has resulted in high levels of lower quality jobs. Direct effects are the result of labour market reforms and interventions, such as active labour market policies. Labour market reforms are problematic as they characterize youth unemployment and underemployment primarily as a productivity problem, rather than flowing from shifts in how capitalist accumulation occurs in Greater Manchester. This approach to labour market reform consolidates neoliberal accumulation strategies in Greater Manchester rather than seeking to develop the

autonomous productive capacity of young workers. As a result, interventions on youth employment are framed in a context of increased competitiveness, as official documentation implies:

High levels of youth unemployment have held our economy back, leaving lasting negative effects on the employment prospects of young people. Addressing this requires co-ordinated action across a range of organisations, led by the Skills and Employment Partnership, to broaden young people's opportunities and ensure that they can compete more effectively in a difficult labour market. (AGMA, 2013: 21)

Active labour market policies aim to respond to weak competition by improving the skills and capacities of the local labour force. This response takes the form of training provision, such as apprenticeships. At the local level there are numerous small-scale policy interventions which primarily target unemployed youth and NEET (not in employment, education or training) status young people (ONS, 2015b). Talent Match and the Greater Manchester Youth Contract Extension (GMYCE), both launched in 2004, are examples of local state interventions. Talent Match provides jobs coaches to support young people who are furthest from labour markets. GMYCE aims to assist young long-term unemployed enter into employment by providing cash incentives to businesses which hire young people. By its own admission, the AGMA has struggled to achieve the targets it set for reducing youth unemployment: 'All GM's youth employment programmes are performing far better than they were but not quite to target. However, in a climate of slightly increasing youth unemployment, this represents significant progress and lessons learned from these need to be built into future activity' (AGMA, 2016). Despite the positive rhetoric, the failure to meet targets in the face of broader changes in employment levels indicates how the local state is constrained from substantive intervention in labour markets informed by social democratic aspirations. The nature of the targets themselves is also indicative of the contemporary focus of the local state: the aim is to reduce youth unemployment and NEET status, rather than seek to facilitate the movement into high-paid, higher productivity work.

Discussion: The limits of growth and reform strategies

Our findings and related arguments are discussed in terms of the two research questions which the main body of the article addresses. The first concerns the extent to which changes in the local governance of the state are informed by broader changes implemented to support Britain's neoliberal capitalism. The strategy of the local state in Greater Manchester is to a large extent constrained by the national state, and the increased power of capital, which national policy directly enables. The local state can no longer pursue autonomous policies for job creation inspired by social democratic aspirations. Instead of this, the local state apparatus aims to enable and create favourable conditions for capital and private sector job creation, often flowing from inward investment. However, the numbers of jobs created from inward FDI are limited, and most job creation is indigenous to Greater Manchester. It is the case that most growth is in low-waged sectors meaning labour is forced into a reliance on debt-fuelled consumption (Folkman

et al., 2016). It is in the restrictions on local state autonomy that the shifts in capital accumulation become evident.

In spite of the various economic strategies deployed by the local state, economic outcomes in the county are mixed, and are largely detrimental to young workers. Although the GVA of Greater Manchester's economy grew at nearly double the national average in 2012 (AGMA, 2014), the increase in both low-paid work and economic inequality across the county bring into question just how equitable this growth is for residents, as the outcomes of economic growth are distributed unevenly across the working population. The restructuring of capital in Greater Manchester into smaller, potentially less innovative units in elementary sectors results from the promotion of labour market competition on the basis of low wages and less regulation by the central state. This strategy is predicated on employment growth through inward investment and indigenous growth of the elementary service economy, in tandem with a deliberate devaluing of youth labour. The low-wage business models of local firms allow any productivity gains from such employment to be appropriated by investors and owners at the expense of retained profit for further investment in innovation – the latter being a key aspect of full-employment capitalism (Clark, 2013).

The second research question centres on how young people in Manchester experience changes in the state policy on work and employment. The sectors of Greater Manchester's local economy that are promoted as high-growth and high value-added have suffered a decline in job longevity and retention, most notably financial services and manufacturing (New Economy, 2016a). Similarly, while Greater Manchester has experienced high levels of business start-ups, it has some of the lowest business survival rates of any UK city-region, indicating that although Greater Manchester may be good at attracting business, it is less successful at sustaining it (AGMA, 2015; Enterprise Research Council, 2017). This reflects the neoliberalism of free market economics where the creation of market mechanisms is assumed in turn to create jobs. The creation and stimulation of markets and market approaches to accumulation in the private and the public sector of the national and local state are viewed by state managers as more democratic than the processes of job creation in the embedded liberalism of full-employment capitalism. Accordingly, the approach taken to labour market reform by the local state is similarly limited in scope. The prominence given to skills-based solutions is marginal and because of this low productivity within labour markets is attributed to the individual worker, rather than to the structural weaknesses in the composition of the local labour market, or the British political economy. Rather than trying to resolve structural labour market issues – such as the presence of large numbers of businesses with low value-added business models – the local state has instead continued to promote a discourse which individualizes the skills issue. This approach aims to overcome perceived skills shortages through the promotion of market-facing training, and associated notions of employability and entrepreneurialism. A particular problem with this market-led approach to training provision is that markets are inherently limited in their ability to resolve skills shortages; this is a recurrent feature of Britain's largely voluntarist approach to skills and training (Keep, 2000; Lloyd and Payne, 2016). Although some employers in Greater Manchester identify skills shortages as a barrier to growth, many are unwilling to invest in skills development, and resort to using temporary staffing agencies, or poaching

skilled workers, rather than investing in training (Ward, 2005). Policy documents demonstrate this, stating that a major challenge preventing an up-skilling agenda is the distinct lack of employer engagement (GMCA, 2015).

The marginal impact of direct local state labour market interventions in job creation raises the prospect that systemic structural issues may be the root of the problem, most crucially shifts in the form that accumulation has taken in Greater Manchester towards labour-intensive service sectors, and the shifts in the orientation of state managers towards capital. The local state is unable to influence the direction of this change, and its policies instead only mitigate the contradictory outcomes of capital accumulation. Labour market policies implemented at the local level enable and reinforce shifts in power towards capital; GMYCE, for example, is the local form of the national-level Youth Contract programme which is a subsidy to business, as employers are rewarded for merely engaging young people, often on a temporary basis. Little consideration is given to the *form* of this employment, associated minimum wage levels or opportunities for progression. Rather, the converse is true: young people are lawfully discriminated against in the form of an age-stratified minimum wage enforced by the national state which is compounded by the recent introduction of the national living wage, which only applies to over 25s. The effect of the minimum wage and national wage devalues youth labour-power in the form of wage-caps but aims to increase the productivity of young workers through work intensification.

The current neoliberal form which local governance takes in Greater Manchester is neither permanent nor inevitable. There is the potential for the composition of the local state to shift in a way that is beneficial to young (and all-age) workers across the county. Central to this shift would be a re-assertion of influence by local state managers to actively intervene in the form which capitalist accumulation takes in Greater Manchester. There are already several examples of this intervention across the county: local councils are directly involved in coordinated economic development and job creation through the majority ownership of the Manchester Airports Group, which owns Manchester (and London Stansted) airport. Manchester Airport is economically successful and is one of the reasons why the southern areas of the county have grown. Manchester Airport (and its surrounding 'airport city' industrial parks) is at present situated within a low-tax enterprise zone, which affects the types of businesses which develop and the working conditions for those employed within these firms. However, this type of development could easily be reshaped into a more sustainable form, in which the economic gains are spread equally across Greater Manchester. It is not inconceivable for local planners to realize that Manchester Airport – a local state-owned enterprise – is an economic model which could be expanded across other parts of the locality. Such a shift could lead to a revived local municipalism which would begin to counter decades of neoliberal development which have led to the growth of low-pay, low-productivity jobs which exist in abundance in Greater Manchester as of 2016.

The Devolution Agreement has the potential to further solidify the low-wage accumulation model of Greater Manchester; this need not be the case. The powers which Greater Manchester is set to gain over health and social care, transport and business rates could be used to promote the growth of businesses which offer more equitable forms of employment to young workers, which would lead to higher wages which would ultimately lead

to the very economic growth which local state managers are so keen to develop. However, these positive changes need be accompanied by increased accountability in local government, which could come through a shifting of powers away from the executive branch and mayor, and towards local legislators. Relatedly, devolved powers could be directed to support the aforementioned revival of local municipalism across the county. The initial financial basis for some of these developments could come from the implementation of a land value tax which is supported by the current mayor of Greater Manchester (Latham, 2017).

Conclusion

To conclude, the aims of local economic strategies in Greater Manchester for young people are confined to attempting to place young people into employment. This highlights the inability of the local state to moderate the contradictions of capital accumulation across the county. In Greater Manchester, efforts to engage in ostensibly social democratic strategies through the promotion of headline and elementary sectors have instead increased the power of private employers. The increased power of private capital has further entrenched disciplinary value relations across the county and has done little to mitigate or challenge enduring structural issues. The expansion of low-paid, de-skilled, intensified insecure¹⁰ work, associated social polarization between the north and south of the county and traffic and environmental problems continue apace. These challenges, together with a looming housing crisis, risk a bigger crisis of social reproduction for young workers as neoliberal governance strategies are further embedded in the local state.

These challenges reveal imperatives which local state strategies impose on employment conditions in Greater Manchester. Our theoretically informed primary research demonstrates that the local state is severely restricted in its ability to actively intervene in local labour markets. This is so because of the institutional composition of the British state and because of shifts in the British political economy which see private capital secure greater influence over local economies, a tendency that is reflected in the emergence of 'entrepreneurial urbanism' in the local state. As a result of these processes, attempts by the local state to engage in progressive reform necessarily occur within a narrow range of policy options which reflect the needs of capital in Greater Manchester – namely the need for largely de-skilled young workers who can enter the growing service economy across the county.

The position of young workers in this accumulation strategy is unquestioned by local politicians and state managers. Young workers are a source of cheap labour-power for the service sector, and their low incomes are used as a source of profit for both the private rental sector and to grow the consumptive economy of Greater Manchester. Few direct attempts are made by the local state to try and intervene and coordinate the labour market for young workers, other than to move the long-term unemployed into work or to up-skill those with the lowest qualifications. All of this leads to large numbers of young workers continuing to experience some of the worst aspects of contemporary labour markets, marked by some of the poorest labour conditions and lowest levels of remuneration. As we have discussed, there is the potential to promote social democratic accumulation

strategies as a potential remedy to the labour market problems facing young workers. However, it must be noted that attempts at economic reform run the risk of the local state succumbing to the same crises of political control and legitimacy which affected Greater Manchester in the 1980s. This risk is ever-present for any state, local or national, which seeks to simultaneously act within and against the market; the dilemma for young workers is that they find themselves in the middle of this contradiction.

Acknowledgements

The authors would like to thank the editors and two anonymous reviewers for their comments on an earlier draft of this article.

Declaration of conflicting interests

The authors declared no potential conflicts of interest with respect to the research, authorship, and/or publication of this article.

Funding

The authors received no financial support for the research, authorship, and/or publication of this article.

Notes

1. This definition of young workers is in line with Office for National Statistics (ONS) and International Labour Organization (ILO) definitions (ILO, 2016; ONS, 2016).
2. Greater Manchester is a metropolitan county made up of 10 metropolitan boroughs: Bolton, Bury, Manchester, Oldham, Rochdale, Salford, Stockport, Tameside, Trafford and Wigan. As of 2016, total employment is over 1.3 million, of which approximately 187,000 are aged 16–24.
3. Low-paid employment is defined by the Low Pay Commission (2016) as employment in which pay is below two-thirds of the median income.
4. All-age unemployment is 5.1%, as of 2016.
5. Some business leaders chose not to cooperate in a long-term strategy for the county. Instead, local business leaders focused on ensuring the profitability of their own businesses and the actions of some business leaders actively undermined attempts by local government to engage in long-term strategic economic planning in the county by preventing the local state from being able to act for capital in a collective sense (Peck and Tickell, 1995).
6. Greater Manchester is part of the Greater Manchester Statutory City Region, which comprises the 10 metropolitan boroughs of Greater Manchester, alongside five neighbouring boroughs, to create a geographical area with a population of 3.36 million, as of 2015 (ONS, 2015a).
7. Greater Manchester's growth rate exceeded that of the South-East (excluding London) for the first time in 2013.
8. The Growth Hub helps firms to access expertise and funding, as well as assisting with provision of flexible workspace at competitive rates (AGMA, 2009).
9. The 'skills as welfare' agenda is the process by which skills development becomes the route to employment and comes to replace unemployment benefit as the preferred form of welfare intervention for the unemployed or economically inactive.
10. Post-recession, full-time employment has increased by 1.7% in Greater Manchester. Self-employment has grown by 32%. Flexible employment has grown by 23% and part-time employment by 12%. These figures are for all-age workers (New Economy, 2016a: 18).

References

- Ashton D, Malcolm M and Spilsbury M (1990) *Restructuring the Labour Market: The Implications for Youth*. Portland, OR: International Specialized Book Service Incorporated.
- Association of Greater Manchester Authorities (2009) *Prosperity for All*. Manchester: AGMA.
- Association of Greater Manchester Authorities (2013) *Stronger Together*. Manchester: AGMA.
- Association of Greater Manchester Authorities (2014) *A Plan for Growth and Reform in Greater Manchester*. Manchester: AGMA.
- Association of Greater Manchester Authorities (2015) *Update on 2009 Greater Manchester Strategy*. Manchester: AGMA.
- Association of Greater Manchester Authorities (2016) *Joint Scrutiny Report of AGMA & GMCA: Greater Manchester Strategy Annual Performance Report July 2016*. Manchester: AGMA, GMCA.
- Blanchflower DG and Bryson A (2010) The wage impact of trade unions in the UK public and private sectors. *Economica* 77(305): 92–109.
- Brenner N (2004) *New State Spaces: Urban Governance and the Rescaling of Statehood*. Oxford: Oxford University Press:
- Brenner N, Peck J and Theodore N (2010) After neoliberalization? *Globalizations* 7(3): 327–345.
- Brown W, Bryson A and Forth J (2009) Competition and the retreat from collective bargaining. In: Brown W, Bryson A, Forth J and Whitfield K (eds) *The Evolution of the Modern Workplace*. Cambridge: University of Cambridge.
- Burnham P (2001) New Labour and the politics of depoliticisation. *The British Journal of Politics and International Relations* 3(2): 127–149.
- Centre for Cities (2014) *Cities Outlook 2014*. London: Centre for Cities.
- Charnock G and Starosta G (eds) (2016) *The New International Division of Labour: Global Transformation and Uneven Development*. Dordrecht: Springer.
- Clark I (2013) Templates for financial control: Management and employee interests under private equity. *Human Resource Management Journal* 23(2): 144–159.
- Clark T and Heath A (2014) *Hard Times: The Divisive Toll of the Economic Slump*. New Haven, CT: Yale University Press.
- Clarke S and D'Arcy C (2016) *Low Pay Britain 2016*. London: Resolution Foundation.
- Clements RV (1958) *The Choice of Careers by School-children*. Manchester: Manchester University Press.
- Cochrane A, Peck J and Tickell A (1996) Manchester plays games: Exploring the local politics of globalisation. *Urban Studies* 33(8): 1319–1336.
- Cochrane A, Peck J and Tickell A (2002) Olympic dreams: Visions of partnership. In: Peck J and Ward K (eds) *City of Revolution: Restructuring Manchester*. Manchester: Manchester University Press, pp. 95–115.
- Crouch C (2011) *The Strange Non-Death of Neo-Liberalism*. Cambridge: Polity.
- Enterprise Research Council (2017) High performing firms and job creation: A longitudinal analysis (1998–2013). ERC Insight Paper.
- Erdem E and Glyn A (2001) Employment growth, structural change and capital accumulation. In: ten Raa T and Schettkat R (eds) *The Growth of Service Industries: The Paradox of Exploding Costs and Persistent Demand*. Cheltenham: Edward Elgar.
- Fine B (2013) Financialization from a Marxist perspective. *International Journal of Political Economy* 42(4): 47–66.
- Folkman P, Froud J, Sukhdev J et al. (2016) *Manchester Transformed: Why We Need a Reset of City Region Policy*. Manchester: Centre for Research on Socio-Cultural Change.

- Gough J (2004) Changing scale as changing class relations: Variety and contradiction in the politics of scale. *Political Geography* 23(2): 185–211.
- Gough J (2014) Society, material life and geography. In: Pain R, Barke M and MacFarlane R (eds) *Introducing Social Geographies*. Abingdon: Routledge.
- Greater Manchester Combined Authority (2015) *Greater Manchester Strategy Performance Framework Report*. Manchester: GMCA
- Greater Manchester Local Enterprise Partnership (2015) *Greater Manchester Local Enterprise Partnership's Assurance Framework for Local Growth Funding*. Manchester: GMLEP.
- Greer I (2016) Welfare reform, precarity and the re-commodification of labour. *Work, Employment and Society* 30(1): 162–173.
- Grimshaw D (2011) *What Do We Know About Low Wage Work and Low Wage Workers? Analysing the Definitions, Patterns, Causes and Consequences in International Perspective*. Geneva: ILO.
- Hammer N and Riisgaard L (2015) Labour and segmentation in value chains. In: Newsome K, Taylor P, Bair J and Rannie A (eds) *Putting Labour in its Place: Labour Process Analysis and Global Value Chains*. London: Palgrave.
- Harvey D (1989a) *The Condition of Postmodernity: An Enquiry into the Origins of Social Change*. Malden, MA: Blackwell.
- Harvey D (1989b) From managerialism to entrepreneurialism: The transformation in urban governance in late capitalism. *Geografiska Annaler: Series B, Human Geography* 71(1): 3–17.
- Harvey D (2006) *Spaces of Global Capitalism*. London: Verso.
- Harvey D (2007) *A Brief History of Neoliberalism*. Oxford: Oxford University Press.
- Hastings T and Heyes J (2016) Farewell to flexicurity? Austerity and labour policies in the European Union. *Economic and Industrial Democracy*. Epub ahead of print 2 March 2016. DOI: 10.1177/0143831X16633756
- HM Treasury (2014) *Devolution to the Greater Manchester Combined Authority and Transition to a Directly Elected Mayor*. London: HM Treasury.
- International Labour Organization (2016) *World Employment and Social Outlook for Youth 2016*. Geneva: ILO.
- Keep E (2000) Learning organisations, lifelong learning and the mystery of the vanishing employers. *Economic Outlook* 24(4): 18–26.
- Latham P (2017) *Who Stole the Town Hall?* Bristol: Policy Press.
- Lloyd C and Payne J (2016) *Skills in the Age of Over-Qualification: Comparing Service Sector Work in Europe*. Oxford: Oxford University Press.
- Low Pay Commission (2016) *National Minimum Wage*. London: Low Pay Commission.
- Lowndes V and Gardner A (2016) Local governance under the conservatives: Super-austerity, devolution and the 'smarter state'. *Local Government Studies* 42(3): 357–375.
- McDermot J (2015) Manchester: UK's new order? *Financial Times*, 20 February.
- MacDonald R (1998) Youth, transitions and social exclusion: Some issues for youth research in the UK. *Journal of Youth Studies* 1(2): 163–176.
- Manchester Independent Economic Review (2008) *Manchester Independent Economic Review*. MIER.
- Manchester Inward Development Agency Service (MIDAS) (2016) Inward FDI investment. Unpublished data-sets. Manchester.
- Martin R and Sunley P (1997) The post-Keynesian state and the space economy. In: Lee R and Wills J (eds) *Geographies of Economies*. London: Edward Arnold, pp. 278–289.
- Money Advice Service (MAS) (2013) *Indebted lives: The complexities of life in debt*. MAS, November.
- New Economy (2015) *Sectoral Deep Dives*. Manchester: New Economy.

- New Economy (2016a) *Low Pay and Productivity (Report for Manchester City Council)*. Manchester: New Economy.
- New Economy (2016b) *Greater Manchester Business Survey 2016*. Manchester: New Economy.
- Nunn A (2008) Restructuring the English working class for global competitiveness. *Papers in the Politics of Global Competitiveness* 9.
- Nunn A (2012) The political economy of competitiveness and social mobility. *British Politics* 7(2): 86–110.
- Office for National Statistics (2002) *UK Census 2001*. London: ONS.
- Office for National Statistics (2012) *UK Census 2011*. London: ONS.
- Office for National Statistics (2014a) *Annual Population Survey*. London: ONS.
- Office for National Statistics (2014b) *UK Business Register and Employment Survey (BRES): 2014 Revised and 2015 Provisional*. London: ONS.
- Office for National Statistics (2015a) *Population Estimates for UK, England and Wales, Scotland and Northern Ireland: Mid-2015*. London: ONS.
- Office for National Statistics (2015b) *Young People Not in Education, Employment or Training (NEET), May 2015*. London: ONS.
- Office for National Statistics (2016) *Young People in the Labour Market*. London: ONS.
- Office for National Statistics (2017) *Average Weekly Earnings by Sector*. London: ONS.
- O'Reilly J, Eichhorst W, Gábor A et al. (2015) Five characteristics of youth unemployment in Europe. *Sage Open* 5(1).
- Organisation for Economic Cooperation and Development (2015) *The Labour Share in G20 Economies*. Paris: OECD.
- Papadopoulos O (2014) Youth unemployment discourses in Greece and Ireland before and during the economic crisis: Moving from divergence to 'contingent convergence'. *Economic and Industrial Democracy* 37(3): 493–515.
- Peck J (2014) Entrepreneurial urbanism: Between uncommon sense and dull compulsion. *Geografiska Annaler: Series B, Human Geography* 96(4): 396–401.
- Peck J and Emmerich M (1992) Recession, restructuring and recession again: The transformation of the Greater Manchester labour market. *Manchester Geographer* 13: 19–46.
- Peck J and Tickell A (1995) Business goes local: Dissecting the 'business agenda' in Manchester. *International Journal of Urban and Regional Research* 19(1): 55–78.
- Peck J and Ward K (eds) (2002) *City of Revolution: Restructuring Manchester*. Manchester: Manchester University Press.
- Quilley S (2000) Manchester first: From municipal socialism to the entrepreneurial city. *International Journal of Urban and Regional Research* 24(3): 601–615.
- Rubery J (2015) Change at work: Feminisation, flexibilisation, fragmentation and financialisation. *Employee Relations* 37(6): 633–644.
- Selenko E and Pils K (2016) The after-effects of youth unemployment: More vulnerable persons are less likely to succeed in Youth Guarantee programmes. *Economic and Industrial Democracy*. Epub ahead of print 2 August 2016. DOI: 10.1177/0143831X16653186
- Sonn JW and Lee D (2012) Revisiting the branch plant syndrome: Review of literature on foreign direct investment and regional development in Western advanced economies. *International Journal of Urban Sciences* 16(3): 243–259.
- Standing G (2011) *The Precariat: The New Dangerous Class*. London: A&C Black.
- Stockhammer E, Durand C and List L (2016) European growth models and working class restructuring: An international post-Keynesian political economy perspective. *Environment and Planning A* 48(9): 1804–1828.
- Thompson P (2013) Financialization and the workplace: Extending and applying the disconnected capitalism thesis. *Work, Employment and Society* 27(3): 472–488.

- UKCES (UK Commission for Employment and Skills) (2013) UK Commission's Employer Skills Survey 2013: UK results, January 2014.
- Van der Pijl K (2006) *Global Rivalries – From Cold War to Iraq*. London: Pluto.
- Van der Pijl K (2015) Varieties of capitalism or dominant fractions? In: Westra R (ed.) *The Future of Capitalism after the Financial Crisis*. Abingdon: Routledge.
- Ward K (2005) Making Manchester flexible: Competition and change in the temporary staffing industry. *Geoforum* 36(2): 223–240.
- Ward M (2014) *Local Enterprise Partnerships (SN/EP/5651, 7, 2014)*. London: House of Commons.
- Winchester D and Bach S (1999) Britain: The transformation of public sector employment relations. In: Bach S, Bordogna L, Rocca D and Winchester D (eds) *Public Sector Employment Relations in Europe: Transformation, Modernization or Inertia?* London: Routledge.

Author biographies

Edward Yates is a researcher at the Centre for Sustainable Work and Employment Futures, University of Leicester, UK, and specializes in the political economy of labour markets. He is currently conducting research on young workers in UK labour markets. Other research interests include labour markets in the NHS, theories of political economy and research methodologies.

Ian Clark is Professor of Work and Employment at Nottingham Business School. He is currently working with the British Academy Future of the Corporation programme and the Gangmasters and Labour Abuse Authority on the spread of hand car washes. Ian has published widely on the diffusion of new business models and the implications of these for work and employment.