

OXFORD
UNIVERSITY PRESS

Journal of Public Health

<http://mc.manuscriptcentral.com/jph>**Devolution and the regional health divide: A longitudinal ecological study of 14 countries in Europe**

Journal:	<i>Journal of Public Health</i>
Manuscript ID	JPH-17-0155.R2
Manuscript Type:	Original Article
Date Submitted by the Author:	n/a
Complete List of Authors:	du Plessis, Ruth; Liverpool School of Tropical Medicine, International Public Health Milton, Beth; The University of Liverpool, Department of Public Health and Policy Barr, Benjamin; University of Liverpool, Department of Public Health and Policy
Keywords:	Social determinants, Economics, Management and policy

SCHOLARONE™
Manuscripts

1
2
3 Title: Devolution and the regional health divide: A longitudinal ecological study of
4 14 countries in Europe
5
6
7
8

9
10 **Corresponding author**

11 **du Plessis, R.** Speciality Registrar in Public Health

12
13
14 Department of International Public Health, Liverpool School of Tropical Medicine, Pembroke Place,
15 Liverpool L3 5QA, England.
16

17
18 **Tel.** 07834602591
19

20 **Email:** ruthduplessis@nhs.net or ruthaduplessis@gmail.com
21
22
23
24

25 **Co-Authors**

26
27 **Milton, B.** Specialty Registrar in Public Health and Honorary Research Fellow,
28

29
30 Department of Public Health and Policy, University of Liverpool, L69 3BX, England
31

32 **Email:** beth.milton@nhs.net
33
34
35
36

37 **Barr, B.** Senior Clinical Lecturer in Applied Public Health Research.
38

39
40 Department of Public Health and Policy, University of Liverpool, L69 3BX, England
41

42 **Email:** B.Barr@liverpool.ac.uk
43
44
45
46
47
48
49
50
51
52
53
54
55
56
57
58
59
60

Abstract

Background: Greater regional devolution can reduce economic inequalities between regions; however, the impact on health inequalities is not clear. We investigated the association between changes over time in the level of devolution in European countries and regional economic and health inequalities.

Methods: We used the proportion of government expenditure controlled by subnational levels of government as our measure of devolution in 14 European countries between 1995 and 2011. Fixed effects linear regression models were used to analyse trends in the level of devolution, trends in regional economic inequalities (Gini-coefficient) and trends in regional health inequalities (slope index) in life expectancy.

Results: Each additional percentage of government expenditure managed at subnational level reduced the Gini-coefficient of regional GDP by -0.17 points (95% CI -0.33 to -0.01; $p=0.04$). However, it *increased* the slope index of regional life expectancy by 23 days (95% CI -2 to 48; $p=0.07$). When trends in regional economic inequalities were controlled for, as a potential mediator - increased devolution - was significantly associated with an *increase* in health inequalities between regions ($p=0.01$).

Conclusions: Increased devolution does not appear to reduce regional health inequalities – even when it reduces regional economic inequalities - and it could be associated with increased health inequalities.

Introduction

In Europe there has been a growing trend in recent years towards greater devolution, resulting in the delegation of power and resources from central to lower levels of government (1). One key aspect of this devolution has been fiscal devolution where the proportion of public expenditure controlled by subnational levels of government has increased. In the UK for example, substantial powers and resources have been devolved to Scotland and Wales in recent years (2) and giving city regions greater control over resources is central to the UK government's strategy to stimulate economic growth in less economically developed regions (3). In Denmark in 2007, large reforms devolved resources and gave additional competences to local and regional authorities (4). The federalism rules introduced in Italy in 2009 increased the fiscal autonomy of the regions (5).

1
2
3
4 Economic differences between regions are a major cause of health inequalities in Europe,
5 with poorer regions within countries experiencing worse health than more wealthy regions
6 (6). Strategies which reduce these economic inequalities could therefore have a beneficial
7 impact on regional health inequalities.
8
9
10

11
12 There are two opposing arguments which indicate the pathways in which fiscal devolution
13 may influence regional economic inequalities. Firstly, it is argued that local decision makers
14 have a greater understanding of local needs, are more accountable to local populations, and
15 have opportunities for innovation, thus devolution can result in more efficient and effective
16 services (7, 8). Where savings are made, resources can be re-invested locally without the
17 inefficiencies that could be introduced by the involvement of central government. Secondly,
18 the opposite argument is fiscal devolution could increase economic inequalities by
19 diminishing the scope of national governments to redistribute resources from wealthier
20 regions to poorer regions (9-11).
21
22
23
24
25
26
27
28

29 The two pathways outlined above also have implications for health inequalities. More
30 effective and efficient local services could help reduce regional health inequalities, whilst
31 reduced redistribution of resources could increase health inequalities (see diagram 1). For
32 example, the Greater Manchester Health and Social Care Devolution Plan proposes to reduce
33 inequalities through redesign of services, including integration across sectors, tailoring to
34 local needs and upgrading prevention (12).
35
36
37
38
39

40 Yet, the relative importance of these two pathways could be different for health inequalities
41 than for economic inequalities. For example, the ability of central governments to target
42 resources at more disadvantaged regions was an effective part of the strategy to reduce health
43 inequalities in England (13, 14). The benefits of this may outweigh those resulting from the
44 increased efficiency and effectiveness that devolution brings. Devolution could also have an
45 impact indirectly through its effect on economic inequalities.
46
47
48
49
50

51 The literature to date relating fiscal devolution to regional inequalities has focused on
52 economic differences between regions, with much of the evidence indicating greater fiscal
53 devolution is associated with reduced economic inequalities between regions (3, 10, 11, 15-
54 17). This suggests, at least for regional economic inequalities, that the increased efficiency
55
56
57
58
59
60

1
2
3 and effectiveness devolution brings outweighs the negative effect from reduced
4 redistribution.
5

6
7
8 We do not know whether fiscal devolution across Europe has led to either a narrowing or a
9 widening of health differences between regions. The studies which have investigated the
10 health inequalities effect of devolution in high income countries have focused on devolution
11 in health care expenditure and reported equivocal results (18, 19). With 10 to 20% of
12 variations in population health estimated as attributable to the health sector, most differences
13 in health are due to actions in other sectors known to be key determinants of health such as
14 education, employment, environment and housing (20). Therefore, devolution could have
15 positive or negative effects on regional health inequalities through its impact on services
16 across multiple sectors.
17
18
19
20
21
22
23

24 In this study, therefore, we used data from a panel of 14 European countries to investigate
25 whether trends in fiscal devolution across European countries are associated with trends in
26 regional health inequalities. We then explored the extent to which changes in regional
27 economic inequalities mediate any effects of fiscal devolution on regional health inequalities.
28
29
30
31
32

33 Method

34 Setting, data sources and measures

35 We measured the level of fiscal devolution in each country as the proportion of total
36 government expenditure managed at a subnational level (state, region or local) obtained from
37 the Organisation for Economic Co-operation and Development (OECD) fiscal
38 decentralisation database (21). To measure regional health inequalities, we calculated the
39 slope index of inequality (SII) of regional life expectancy for each country and each year.
40 This measure indicates the absolute difference in life expectancy between the regions with
41 the lowest and highest Gross Domestic Product (GDP) per capita within each country. It was
42 calculated as the population weighted linear regression slope of regional life expectancy and
43 regional GDP per capita, with regional GDP scaled between 0 and 1 (22). Annual data on
44 regional life expectancy and regional GDP per capita were obtained from the OECD for all
45 Territorial Level 2 (TL2) regions within each country. GDP per capita was measured in USD
46 per head, at constant Purchasing Power Parity (PPP) (base year 2010).
47
48
49
50
51
52
53
54
55
56
57
58
59
60

1
2
3
4 The OECD TL2 regions for European countries are the similar to the Eurostat NUTS 2 level
5 classification. We used this level as it represents the first administrative tier of subnational
6 government, and in most European countries this is the level at which fiscal devolution has
7 occurred (5).
8
9
10

11
12 To measure regional economic inequality, we calculated the annual Gini-coefficient of
13 regional GDP per capita (23), using the STATA package Inequa7 (24). Using the approach
14 applied by the World Bank (25), we scaled the Gini-coefficient from 0 to 100, with 0
15 representing perfect equality (meaning all regions have the same GDP) whilst 100 represents
16 complete inequality (one region has all the GDP). To control for national-level economic
17 trends that may confound the effect of devolution on health inequalities (26-28), we included
18 annual data on national GDP and national unemployment rates obtained from the OECD and
19 EUROSTAT respectively (23, 29).
20
21
22
23
24
25

26
27 Regions that were autonomous protectorates were excluded (Azores and Madeira in Portugal,
28 and Ceuta and Melilla in Spain). To maximise the generalisability of our analysis to Europe
29 we included all European countries with greater than five regions and with available data
30 between 1995 and 2011. The analysis was therefore based on data from 14 countries: Austria,
31 Czech Republic, Denmark, Finland, France, Germany, Hungary, Italy, Norway, Poland,
32 Portugal, Spain, Sweden, and the UK. For nine countries, data were available for all 17 years
33 between 1995 to 2011 (Austria, Czech Republic, Finland, France, Italy, Portugal, Spain,
34 Sweden, UK). Data were only available for 16 years for Hungary, 15 years for Norway, 12
35 years for Germany and Denmark and 2 years for Poland. Details of country-years with
36 missing data are given in web Appendix 1. In total, 210 country-years were available for
37 analysis.
38
39
40
41
42
43
44
45

46 Analysis

47 To explore the data visually, we initially calculated the average absolute annual change in the
48 SII in regional life expectancy, the level of fiscal devolution and the Gini-coefficient of
49 regional GDP. We then graphed scatter-plots of the association between (1) the change in the
50 level of devolution and the change in the Gini-coefficient of regional GDP, and (2) the
51 change in the level of devolution and the change in the SII.
52
53
54
55
56
57
58
59
60

1
2
3
4 To adjust for the potential confounders of these associations we estimated fixed effects linear
5 regression models, additionally controlling for national economic trends using the annual
6 national GDP and unemployment rate for each country. Fixed effects models essentially
7 include a dummy variable for each country controlling for time-invariant differences between
8 the countries that could act as confounders, so that the models assess the association between
9 absolute trends in devolution and regional economic and health inequalities within countries
10 (30).
11
12
13
14
15
16

17 Firstly, we included the Gini-coefficient of regional GDP as the outcome and investigated the
18 association between trends in fiscal devolution and the trend in regional economic inequality.
19 Secondly, we included the SII of regional life expectancy as the outcome to investigate the
20 association between trends in fiscal devolution and the trend in regional health inequality.
21 Thirdly, we additionally controlled for the trend in the Gini-coefficient of regional GDP -
22 whilst including the SII of regional life expectancy as the outcome - to explore the extent to
23 which changes in regional economic inequalities mediated the effect of devolution on
24 regional health inequalities. All models were weighted for population size, included time
25 trend terms to adjust for secular trends across Europe, and used robust clustered standard
26 errors. Statistical analyses were performed using STATA11 (full model formulae are given
27 in web Appendix 2).
28
29
30
31
32
33
34
35
36

37 Sensitivity tests

38 We undertook several sensitivity tests to investigate the robustness of these models. To
39 exclude any effects from the economic crisis, we limited our analyses to data prior to 2008.
40 Because control over tax revenue - as opposed to control over expenditure - may also be an
41 important indicator of fiscal devolution (31), we replicated our analysis using the proportion
42 of taxation raised at the subnational level as our indicator of fiscal devolution. To take
43 account of delayed effects of changes in devolution, we replicated models with our measure
44 of fiscal devolution lagged by 0 to 3 years. As bias could result from the unbalanced nature of
45 the panel, we repeated analysis only including countries with the full 17 years of data.
46
47
48
49
50
51
52
53
54
55
56
57
58
59
60

Results

Between 1995 and 2011, across the study countries, the average proportion of expenditure controlled by subnational governments increased slightly from 27% to 33% (see web appendix 3). During this time those countries which tended to experience a greater increase in devolution also tended to experience a greater decline in economic differences between regions (as measured by the Gini-coefficient of regional GDP, $r=0.29$, $p<0.001$). However, those countries which experienced a greater increase in devolution also tended to experience a greater *increase* in health inequalities between regions ($r=0.47$, $p<0.001$) (see Figure 1).

The multivariable regression analyses indicated broadly similar associations when controlling for economic trends in each country and country fixed effects. As Table 1 shows, each additional percentage of government expenditure managed at the subnational level reduced the Gini-coefficient of regional GDP by -0.17 points (95% CI -0.33 to -0.01; $p=0.04$). With each additional percentage of government expenditure managed at the subnational level the SII of regional life expectancy increased by 23 days (95% CI -2 to 48), although this was just below significance at the 5% level ($p=0.07$). When additionally controlling for the Gini-coefficient of regional GDP in this model, however, the association increased and was significant ($p=0.01$). This suggests the association between increased devolution and higher health inequalities was mitigated to some extent through the effect of increased devolution reducing regional economic inequalities. When the mediating pathway between devolution and health inequalities via economic inequalities was held constant (by controlling for it in the analysis), we saw a larger significant association between increased devolution and increased regional health inequalities.

Our results were broadly comparable when limiting data to prior to the economic crisis (2008), or using the proportion of taxation raised at the subnational level as our indicator of fiscal devolution, or only including countries with the full 17 years of data. The lag models indicated that the association between fiscal devolution and reduced economic inequality was greatest for a lag of two years. For the other models, there the association was greatest with the fiscal devolution variable lagged by 1 year (see web Appendix 4).

Discussion

Main findings

As has been the case in previous studies (10, 11) we found increased devolution was associated with reduced regional economic inequalities. However, the impact on health inequalities was not straightforward. We found increases in devolution were associated with *increased* regional health inequalities, although this was only significant if trends in regional economic inequalities were controlled for. This suggests the direct effect of increased devolution was to increase health inequalities, but because devolution also tended to reduce regional economic inequalities, this mitigated some of the direct negative impacts of devolution on regional health inequalities.

What is already known

There has been a growing trend in Europe towards greater fiscal devolution (1). Several studies have shown greater fiscal devolution is associated with decreased economic inequalities between regions within countries (3, 10, 11, 15-17). It is thought localised decision-making may lead to more effective and efficient use of resources as it is informed by local knowledge about needs and is accountable to local populations and this may contribute to reduced regional economic inequalities (9).

We do not know the health inequalities impact of devolution policy. The few studies which have investigated the health inequalities effect of devolution in high income countries have tended to investigate the effects of devolution on health care expenditure. An Italian study (32), found a reform which devolved a large proportion of healthcare expenditure was associated with a reduction in inequalities in self-reported health *within* regions, but it did not investigate the effect on inequalities between regions. Costa-Font & Gil (18) found no association between devolution of health care expenditure in Spain and inequalities in reported health status. A Canadian study found healthcare devolution was followed by an increase in inequalities in health status (19). However, although we know public investment across multiple sectors (education, employment, environment and housing) has the potential to influence health, we do not know whether increased fiscal devolution of public expenditure in general is associated with a decrease or an increase in health differences between regions within European countries.

What this study adds

Our results indicate that whilst devolution may be an effective approach to reducing regional economic inequalities, this does not necessarily translate into reduced health inequalities. In fact, the opposite may be true, and devolution may increase health inequalities between regions. There are several reasons why fiscal devolution could be associated with reduced regional differences in GDP whilst being associated with increased regional differences in life expectancy.

Firstly, it could be that the ability to redistribute resources from wealthier regions to poorer regions is particularly important for addressing health inequalities and this capacity is reduced in more devolved administrations, leading to under-funded health and social services in poorer regions. Other research has shown that centrally-planned targeting of resources to disadvantaged areas has been associated with reduced health inequalities (13, 14).

Secondly, greater local control over public investment decisions may lead to local legislation and investment in projects which have primarily economic benefits and limited health benefits. Investment in infrastructure projects, attracting outside investment or public popularity may be prioritised above health; and thus, economic efficiencies may not translate into population health benefits. Local governments may also be more susceptible to lobbying from corporations and local businesses, undermining their capacity to implement public health legislation – such as controlling access to alcohol or unhealthy foods, or reducing environmental pollution. Whilst local businesses may seek to reduce regulations that have public health benefits but are seen as a barrier to economic growth (33).

Finally, it could also be that the reductions in regional differences in GDP associated with increased fiscal devolution do not represent a reduction in inequalities in the life chances of the populations living in different regions. For example, in more devolved administrations where there is greater regional control over the setting of tax rates, poorer regions may try and compete with other regions to attract external investment by reducing taxes. This could lead to increased capital flows into poorer regions – reducing regional differences in GDP, however these increases in regional GDP may not translate into widespread improvements in wages (34). Furthermore the reduced levels of taxation in these regions then reduce income for public service provision, further widening inequalities in life chances. (35).

1
2
3
4 Our findings have important implications for policies that aim to devolve greater resources to
5 subnational levels. They indicate that even if such policies reduce economic differences
6 between regions, they could still increase health differences. Therefore, policies should not be
7 purely focused on economic growth or even just on reducing economic inequalities between
8 regions. Mitigating actions will need to be taken to ensure health inequalities are not increased
9 by these policies and to maximise the potential for such policies to reduce health inequalities
10 (36).
11
12
13
14
15
16
17

18 Strengths and limitations of this study

19 Our findings need to be understood in the context of several limitations. Firstly, because our
20 study analysed data at the aggregate level, we cannot know whether the findings reflect
21 associations at the individual level. For example, it could be that whilst there was an
22 association between increased devolution and increased regional health inequalities, health
23 inequalities could have concurrently reduced within regions as was found in the study of
24 health care devolution in Italy (32).
25
26
27
28
29

30 Secondly, the measure of devolution we used – the proportion of government expenditure
31 managed at the subnational level - only reflects a component of devolution. In practice, the
32 nature of devolution differs greatly between countries, with differences in the level of
33 devolution between tiers of government and between regions. Models vary between federal
34 governments with three tiers, such as Belgium, to unitary governments with one level but
35 with some autonomous regions, such as in Portugal (37). In some countries, devolution
36 relates primarily to decisions over expenditure, in others to tax raising powers, and in others
37 to legislative freedoms. In this study, we have focused on one measure of fiscal devolution,
38 and we have not been able to investigate differential impacts of alternative approaches to
39 devolution across the study countries. However, our findings did not change when using the
40 proportion of tax revenue raised at the subnational level (rather than the level of expenditure
41 controlled at the subnational level) as the measure of devolution.
42
43
44
45
46
47
48
49
50

51 Thirdly, due to limitations in the data available the sample size was relatively small;
52 therefore, the analysis may have been underpowered and our estimates are relatively
53 imprecise. Fourthly, it is possible the associations we observed were due to other
54
55
56
57
58
59
60

1
2
3 confounding factors that we were not able to take into account in the analysis. However, by
4 analysing change over time across countries, our analysis provides more robust evidence than
5 simple cross-sectional analyses. This enabled us to control for potentially unobserved time-
6 invariant confounders that could vary between countries. Finally, our investigation of
7 whether regional economic inequalities mediate the effect of fiscal devolution on regional
8 health inequalities assumes trends in regional health inequalities are not a major cause of
9 regional economic inequalities. If this was the case, we would be conditioning on a common
10 effect of exposure and outcome and the increased association observed in model 3 could then
11 be the result of collider bias (38).
12
13
14
15
16
17
18
19

20 Conclusion

21
22 Across the 14 European countries included in our analysis, whilst increased fiscal devolution
23 was associated with decreased regional economic inequalities, it was associated with
24 increased regional health inequalities. Policies which promote increased fiscal devolution
25 should aim to minimise any negative impacts on health inequalities and to maximise positive
26 impacts. This could include ensuring that devolution is combined with policies for inclusive
27 economic growth (39) and a progressive system for redistribution of resources both between
28 regions and between individuals through a comprehensive welfare system (22).
29
30
31
32
33

34 References

- 35
36
37 1. Polverari L. Does Devolution Increase Accountability? Empirical Evidence from the
38 Implementation of European Union Cohesion Policy. *Regional Studies*, 2015; 49:1074-86.
39 2. Local Government Association. *Briefing - Greater Manchester Health and Social Care
40 Partnership*, 2015. Available at: <http://www.gmhsc.org.uk/> [Accessed 5 March 2015].
41 3. City Growth Commission. *Unleashing Metro Growth Final Recommendations of the City
42 Growth Commission*. London; 2014.
43 4. Blöchliger H, Vammalle C. *Reforming Fiscal Federalism and Local Government: Beyond
44 the Zero-Sum Game*. Paris: OECD Publishing; 2012.
45 5. Council of European Municipalities and Regions. *Decentralisation at a crossroads:
46 Territorial reforms in Europe in times of crisis*. Brussels. Council of European Municipalities
47 and Regions; 2013.
48 6. Marmot M. *Health inequalities in the EU: Final report of a consortium*. Brussels.
49 European Union; 2013.
50 7. Robalino DA, Picazo OF, Voetberg A. *Does Fiscal Decentralization Improve Health
51 Outcomes? Evidence from a Cross-Country Analysis*. Washington. World Bank; 2001.
52 8. Oates WE. *On the Theory and Practice of Fiscal Decentralization*. Lexington. Institute for
53 Federalism and Intergovernmental Relations; 2006.
54
55
56
57
58
59
60

- 1
- 2
- 3 9. Asfaw A, Frohberg K, James KS, Jutting JP. *Modeling the Impact of Fiscal*
- 4 *Decentralization on Health Outcomes: Empirical Evidence from India*. Bonn. Center for
- 5 Development Research, University of Bonn; 2004.
- 6 10. Canaleta CG, Arzoz PP, Garate MP. Regional Economic Disparities and Decentralisation.
- 7 *Urban Studies*, 2004; 41:71–94.
- 8 11. Lessmann C. Regional Inequality and Decentralization: An Empirical Analysis.
- 9 *Environment and Planning A* 2012; 44:1363-88.
- 10 12. Greater Manchester Combined Authority. *Taking Charge of our Health and Social Care*
- 11 *in Greater Manchester: The Plan*. Manchester, 2015.
- 12 13. Barr B, Bambra C, Whitehead M. The impact of NHS resource allocation policy on
- 13 health inequalities in England 2001-11: longitudinal ecological study. *British Medical*
- 14 *Journal* 2014; 348:g3231.
- 15 14. Barr B, Higgerson J, Whitehead M. Investigating the impact of the English health
- 16 inequalities strategy: time trend analysis. *British Medical Journal* 2017; 358: j3310.
- 17 15. Beila J, Hennl A, Kaiser A. Combining Federalism and Decentralization: Comparative
- 18 Case Studies on Regional Development Policies in Switzerland, Austria, Denmark, and
- 19 Ireland. *Comparative Political Studies*, 2012; 45:447 –76.
- 20 16. Ezcurra R, Pascual P. Fiscal decentralization and regional disparities: evidence from
- 21 several European Union countries. *Environment and Planning* 2008; 40:1185-1201.
- 22 17. Governatori M, Yim D. *Fiscal Decentralisation and Fiscal Outcomes*. European
- 23 Commission, Directorate-General for Economic and Financial Affairs; Brussels, 2012.
- 24 18. Costa-Font J, Gil J. *Exploring the Pathways of Inequality in Health, Access and*
- 25 *Financing in Decentralised Spain*. London. London School of Economics and Political
- 26 Science; 2008.
- 27 19. Zhong H. The impact of decentralization of health care administration on equity in health
- 28 and health care in Canada. *International Journal of Health Care Finance and Economics*
- 29 2010; 10:219–37.
- 30 20. Health Affairs. Health Policy Brief: *The Relative Contribution Of Multiple Determinants*
- 31 *To Health Outcomes*. Health Affairs and Robert Wood Johnson Foundation; Maryland, 2014.
- 32 21. OECD, OECD Fiscal Decentralisation Database. [Online]. Available at:
- 33 http://www.oecd.org/tax/federalism/oecd-fiscal-decentralisation-database.htm#C_3
- 34 [Accessed 23 March 2015].
- 35 22. Mackenbach J, Kunst E. Measuring the Magnitude of Socio-Economic Inequalities in
- 36 Health: An Overview of Available Measures Illustrated with Two Examples from Europe.
- 37 *Social Science & Medicine* 1997; 44:757-71.
- 38 23. OECD, Regional Statistics and Indicators. [Online]. Available at:
- 39 <http://www.oecd.org/cfe/regional-policy/regional-statistics-and-indicators.htm>. [Accessed 23
- 40 March 2015].
- 41 24. Van Kerm P. Stata module to compute measures of inequality, ideas. Boston College,
- 42 Department of Economics; 2007; Available at:
- 43 <https://ideas.repec.org/c/boc/bocode/s416401.html> [Accessed 13 October 2016].
- 44 25. The World Bank. GINI index (World Bank estimate). [Online]. Available at:
- 45 <https://data.worldbank.org/indicator/SI.POV.GINI> [Accessed 25 June 2015].
- 46 26. Cribb J, Joyce R, Phillip D. *Living Standards, Poverty and Inequality in the UK: 2012*.
- 47 London. The Institute for Fiscal Studies; 2012.
- 48 27. Council of European Municipalities and Regions. *Crisis and decentralisation*. 2014;
- 49 Available at: <http://www.ccre.org/en/activites/view/13> [Accessed 7 August 2015].
- 50 28. Owyang MT, Sekhposyan T, Vermann EK. Output and Unemployment How Do They
- 51 Relate Today? *The Regional Economist* 2013, p. 4-9.
- 52
- 53
- 54
- 55
- 56
- 57
- 58
- 59
- 60

- 1
2
3 29. Eurostat. Labour markets at regional level. [Online] Available at:
4 [http://ec.europa.eu/eurostat/statistics-](http://ec.europa.eu/eurostat/statistics-explained/index.php/Labour_market_statistics_at_regional_level)
5 [explained/index.php/Labour_market_statistics_at_regional_level](http://ec.europa.eu/eurostat/statistics-explained/index.php/Labour_market_statistics_at_regional_level) [Accessed 12 October
6 2015].
7 30. Torres-Reyna O. *Panel Data Analysis Fixed and Random Effects using Stata*. Princeton.
8 Princeton University; 2007.
9 31. Jiménez-Rubio D. The impact of fiscal decentralization on infant mortality rates:
10 Evidence from OECD countries. *Social Science & Medicine*. 2011; 73:1401-7.
11 32. Di Novi C, Piacenza M, Robone S, Turati G. *How does fiscal decentralization affect*
12 *within-regional disparities in well-being? Evidence from health inequalities in Italy*. York.
13 University of York; 2015.
14 33. Katikireddi SV, Smith KE, Stuckler D, McKee M. Devolution of power, revolution in
15 public health? *Journal of Public Health*. 2017; 39:241-7.
16 34. Alves J, Peralta S, Perelman J. Efficiency and equity consequences of decentralization in
17 health: an economic perspective. *Revista Portuguesa de Saúde Pública* 2013; 31:74-83.
18 35. Social Mobility Commission. *State of the Nation 2017: Social Mobility in Great Britain*.
19 London, 2017.
20 36. OECD. *OECD Territorial Reviews: Sweden 2010*. Paris: OECD Publishing; 2010.
21 37. Allain-Dupré D. *Decentralisation trends in OECD countries: a comparative perspective*
22 *for Ukraine* [Presentation]; OECD, Regional Development Policy Division; 2016.
23 38. Cole SR, Platt RW, Schisterman EF, et al. Illustrating bias due to conditioning on a
24 collider. *International Journal of Epidemiology* 2010; 39:417-20.
25 39. Saunders M, Barr B, McHale P, Hamelmann C. *Key Policies for Addressing the Social*
26 *Determinants of Health and Health Inequities*. Health Evidence Network (HEN), Synthesis
27 Report 52. Copenhagen. WHO Regional Office for Europe. 2017.
28
29
30
31
32
33
34
35
36
37
38
39
40
41
42
43
44
45
46
47
48
49
50
51
52
53
54
55
56
57
58
59
60

Abstract

Background: Greater regional devolution can reduce economic ~~inequalities, inequalities~~ between regions; ~~however, however,~~ the impact on health inequalities is not clear. We investigated the association between changes over time in the level of devolution in European countries and regional economic and health inequalities.

Methods: We used the proportion of government expenditure controlled by subnational levels of government as our measure of devolution in 14 European countries between 1995 and 2011. Fixed effects linear regression models were used to analyse trends in the level of devolution, trends in regional economic inequalities (Gini-coefficient) and trends in regional health inequalities (slope index) in life expectancy.

Results: Each additional percentage of government expenditure managed at subnational level reduced the Gini-coefficient of regional GDP by -0.17 points (95% CI -0.33 to -0.01; $p=0.04$). ~~However,~~ it *increased* the slope index of regional life expectancy by 23 days (95% CI -2 to 48; $p=0.07$). When trends in regional economic inequalities were controlled for, as a potential mediator - increased devolution - was significantly associated with an *increase* in health inequalities between regions ($p=0.01$).

Conclusions: Increased devolution does not appear to reduce regional health inequalities – even when it reduces regional economic inequalities - and it could be associated with increased health inequalities.

Introduction

In Europe there has been a growing trend in recent years towards greater devolution, resulting in the delegation of power and resources from central to lower levels of government (1). One key aspect of this devolution has been fiscal ~~decentralisation~~ where the proportion of public expenditure controlled by subnational levels of government has increased. In the UK for example, substantial powers and resources have been devolved to Scotland and Wales in recent years (2) and giving city regions greater control over resources is central to the UK government's strategy to stimulate economic growth in less economically developed regions(3). In Demark in 2007, large reforms ~~decentralised-devolved~~ resources and gave additional competences to local and regional authorities (4). The federalism rules introduced in Italy in 2009 increased the fiscal autonomy of the regions (5).

Formatted: Font color: Red

Economic differences between regions are a major cause of health inequalities in Europe, with poorer regions within countries experiencing worse health than more wealthy regions (6). Strategies which reduce these economic inequalities could therefore have a beneficial impact on regional health inequalities.

~~The literature to date relating fiscal devolution to regional inequalities has focused on economic differences between regions, with much of the evidence indicating greater fiscal devolution is associated with reduced economic inequalities between regions (3, 7-11). This suggests, at least for regional economic inequalities, that the increased efficiency and effectiveness devolution brings outweigh any the negative effect from reduced redistribution.~~

There are two opposing arguments which indicate the ways in which fiscal devolution may influence regional economic inequalities. Firstly, it is argued, ~~fiscal devolution leads to more effective and efficient local investment of resources. Because that local local decision decision makers have a greater understanding of local needs, and are more accountable to local populations, and have opportunities for innovation, this thus devolution can results in reduced inequalities between regions more efficient and effective services~~ (12, 13). Where savings are made, ~~resources can then~~ be re-invested locally without the ~~inefficiencies that could be introduced by the~~ involvement of central governments ~~which could introduce inefficiencies.~~ (14) ~~For example the Manchester city region in England reports that devolution of the health service budget to the region will lead to the redesign of services so that they are integrated across sectors, tailored to people people's needs and focused on prevention.~~ Secondly, the opposite argument is fiscal devolution could increase economic inequalities by diminishing the scope of national governments to redistribute resources from wealthier regions to poorer regions: ~~In more devolved administrations, the wealthier regions that can raise more resources through taxation are able to keep a greater proportion of their tax funds~~ (7, 11, 15).

~~The literature to date relating fiscal devolution to regional inequalities has focused on economic differences between regions, with much of the evidence indicating greater fiscal devolution is associated with reduced economic inequalities between regions (3, 7-11). This suggests, at least for regional economic inequalities, that the increased efficiency and effectiveness devolution brings outweighs the negative effect from reduced redistribution.~~

Formatted: Font color: Red

Formatted: Font color: Red

Formatted: Font color: Red, Strikethrough

Formatted: Font color: Red

Formatted: Font color: Red

Formatted: Font color: Red

Formatted: Font color: Red

Formatted: Font color: Red

Field Code Changed

Formatted: Font color: Red

Formatted: Font color: Red, Strikethrough

Formatted: Font color: Red

Formatted: Font color: Red, Strikethrough

Formatted: Font color: Red

Formatted: Font color: Red

Comment [ML1]: Don't think report is the right word, use considers that or feels that

Formatted: Font color: Red

Formatted: Font color: Red

Formatted: Font color: Red

Comment [BB2]: (ref : Taking charge of our Health and Social Care. in Greater Manchester)

Formatted: Font color: Red

Formatted: Font color: Red

Formatted: Font color: Auto

Formatted: Font color: Red, Strikethrough

Formatted: Font color: Red

Field Code Changed

Comment [BB3]: This didn't make sense if before the paragraph above – since you hadn't yet introduced the concept of how devolution might have a negative effect on redistribution

The two pathways outlined above also have implications for health inequalities. More effective and efficient local services could help reduce regional health inequalities, whilst reduced redistribution of resources could increase health inequalities (see diagram 1). For example, the Greater Manchester Health and Social Care Devolution Plan suggests devolution can reduce inequalities as it will enable the redesign of services, including integration across sectors, tailoring to local needs and upgrade prevention (14). Yet, the relative importance of these two pathways could be different for health inequalities than for economic inequalities. For example, the ability of central governments to target resources at more disadvantaged regions was an effective part of the strategy to reduce health inequalities in England (16, 17). The benefits of this may outweigh those resulting from the increased efficiency and effectiveness that devolution brings. Devolution could also have an impact indirectly through its effect on economic inequalities.

The literature to date relating fiscal devolution to regional inequalities has focused on economic differences between regions, with much of the evidence indicating greater fiscal devolution is associated with reduced economic inequalities between regions (3, 7-11). This suggests, at least for regional economic inequalities, that the increased efficiency and effectiveness devolution brings outweighs the negative effect from reduced redistribution.

We do not know whether fiscal devolution across Europe has led to either a narrowing or a widening of health differences between regions. The only studies which have investigated the health inequalities effect of devolution in high income countries have focused on devolution in health care expenditure and reported equivocal results (18, 19).

With 10 to 20% of variations in population health estimated as attributable to the health sector, most differences in health are due to actions in other sectors known to be key determinants of health such as education, employment, environment and housing (20). Therefore, devolution could have positive or negative effects on regional health inequalities through its impact on services across multiple sectors.

Most differences in health between populations are not due to actions in the health sector, but due to actions in other sectors known to be key determinants of health—e.g. education, employment, environment and housing, with only around 10 to 20% of variations in population health estimated to be attributable to the health sector. Therefore, devolution

Formatted: Font color: Red

Formatted: Font color: Red

Formatted: No bullets or numbering

Formatted: Font color: Red, Strikethrough

Formatted: Font color: Red

Formatted: Font color: Red

Formatted: Font color: Red

Formatted: Font color: Red

Formatted: Font color: Red

Formatted: Font color: Red

Formatted: Font color: Red

Formatted: Font color: Red, Strikethrough

Comment [BB4]: [this is a better reference - "The Relative Contribution of Multiple Determinants to Health," Health Affairs Health Policy Brief, August 21, 2014. DOI: 10.1377/hpb20140821.404487].

Formatted: Font color: Red, Strikethrough

Formatted: Font color: Red, Strikethrough

~~could have positive or negative effects of regional health inequalities through its effect on services across multiple sectors.~~

~~Given health services account for only a third of the impact on life expectancy(21), focusing on health service devolution misses the influence of fiscal devolution on services as education, employment and housing.~~

The relative importance of these two pathways could be different for health inequalities than for economic inequalities. For example, the ability of central governments to target resources at more disadvantaged regions was an effective part of the strategy to reduce health inequalities in England (16, 17). The benefits of this may outweigh those resulting from the increased efficiency and effectiveness that devolution brings (21).

~~Fiscal devolution could have an impact on health inequalities directly through the health benefits of improved health and social services, and it could also have an impact indirectly through its effect on economic inequalities, which are known determinants of health (see Appendix 4 for a diagram outlining the pathways from fiscal devolution to regional health inequalities).~~

In this study, therefore, we used data from a panel of 14 European countries to investigate whether trends in fiscal devolution across European countries are associated with trends in regional health inequalities. We then explored the extent to which changes in regional economic inequalities mediate any effects of fiscal devolution on regional health inequalities.

Method

Setting, data sources and measures

We measured the level of fiscal devolution in each country as the proportion of total government expenditure managed at a subnational level (state, region or local) obtained from the Organisation for Economic Co-operation and Development (OECD) fiscal decentralisation database (22). To measure regional health inequalities, we calculated the slope index of inequality (SII) of regional life expectancy for each country and each year. This measure indicates the absolute difference in life expectancy between the regions with the lowest and highest Gross Domestic Product (GDP) per capita within each country. It was calculated as the population weighted linear regression slope of regional life expectancy and

Formatted: Font color: Red

Formatted: Font color: Red

Formatted: Font color: Red

Formatted: Font color: Red

Formatted: Font color: Red

Formatted: Font color: Red

Formatted: Font color: Red

Formatted: Font color: Red

Formatted: Font color: Red, Strikethrough

Formatted: Font color: Red

Formatted: Font color: Red, Strikethrough

Formatted: Font color: Red, Strikethrough

Formatted: Font color: Red

1
2
3
4
5
6 regional GDP per capita, with regional GDP scaled between 0 and 1 (23). Annual data on
7 regional life expectancy and regional GDP per capita were obtained from the OECD for all
8 Territorial Level 2 (TL2) regions within each country. GDP per capita was measured in USD
9 per head, at constant Purchasing Power Parity (PPP) (base year 2010).
10
11

12
13 The OECD TL2 regions for European countries are the similar to the Eurostat NUTS 2 level
14 classification. We used this level as [this-it](#) represents the first administrative tier of
15 subnational government, and in most European countries this is the level [to-at](#) which fiscal
16 devolution has occurred (5).
17
18

19
20 To measure regional economic inequality, we calculated the annual Gini-coefficient of
21 regional GDP per capita (24), using the STATA package Inequa7 (25). Using the approach
22 applied by the World Bank (26), we scaled the Gini-coefficient from 0 to 100, with 0
23 representing perfect equality (meaning all regions have the same GDP) whilst 100 represents
24 complete inequality (one region has all the GDP). To control for national-level economic
25 trends that may confound the effect of devolution on health inequalities (27-29), we included
26 annual data on national GDP and national unemployment rates obtained from the OECD and
27 EUROSTAT respectively (24, 30).
28
29
30
31

32
33 Regions that were autonomous protectorates were excluded (Azores and Madeira in Portugal,
34 and Ceuta and Melilla in Spain). To maximise the generalisability of our analysis to Europe
35 we included all European countries with greater than five regions and with available data
36 between 1995 and 2011. The analysis was therefore based on data from 14 countries: Austria,
37 Czech Republic, Denmark, Finland, France, Germany, Hungary, Italy, Norway, Poland,
38 Portugal, Spain, Sweden, and the UK. For nine countries, data were available for all 17 years
39 between 1995 to 2011 (Austria, Czech Republic, Finland, France, Italy, Portugal, Spain,
40 Sweden, UK). Data were only available for 16 years for Hungary, 15 years for Norway, 12
41 years for Germany and Denmark and 2 years for Poland. Details of country-years with
42 missing data are given in Appendix 1. In total, 210 country-years were available for analysis.
43
44
45
46
47

48 Analysis

49
50 To explore the data visually, we initially calculated the average absolute annual change in the
51 SII in regional life expectancy, the level of fiscal devolution and the Gini-coefficient of
52
53
54
55
56
57
58
59
60

1
2
3
4
5
6 regional GDP. We then graphed scatter-plots of the association between (1) the change in the
7 level of devolution and the change in the Gini-coefficient of regional GDP, and (2) the
8 change in the level of devolution and the change in the SII.
9

10
11
12 To adjust for the potential confounders of these associations we estimated fixed effects linear
13 regression models, additionally controlling for national economic trends using the annual
14 national GDP and unemployment rate for each country. Fixed effects models essentially
15 include a dummy variable for each country controlling for time-invariant differences between
16 the countries that could act as confounders, so that the models assess the association between
17 absolute trends in devolution and regional economic and health inequalities within countries
18

19
20
21 (31).
22

Formatted: Font:

23 Firstly, we included the Gini-coefficient of regional GDP as the outcome and investigated the
24 association between trends in fiscal devolution and the trend in regional economic inequality.
25 Secondly, we included the SII of regional life expectancy as the outcome to investigate the
26 association between trends in fiscal devolution and the trend in regional health inequality.
27 Thirdly, we additionally controlled for the trend in the Gini-coefficient of regional GDP -
28 whilst including the SII of regional life expectancy as the outcome - to explore the extent to
29 which changes in regional economic inequalities mediated the effect of devolution on
30 regional health inequalities. All models were weighted for population size, included time
31 trend terms to adjust for secular trends across Europe, and used robust clustered standard
32 errors. Statistical analyses were performed using STATA11 (full model formulae are given
33 in Appendix 2).
34
35
36
37
38
39

40 Sensitivity tests

41 We undertook several sensitivity tests to investigate the robustness of these models. To
42 exclude any effects from the economic crisis, we limited our analyses to data prior to 2008.
43 Because control over tax revenue - as opposed to control over expenditure - may also be an
44 important indicator of fiscal devolution (32), we replicated our analysis using the proportion
45 of taxation raised at the subnational level as our indicator of fiscal devolution. To take
46 account of delayed effects of changes in devolution, we replicated models with our measure
47 of fiscal devolution lagged by 0 to 3 years. As bias could result from the unbalanced nature of
48 the panel, we repeated analysis only including countries with the full 17 years of data.
49
50
51
52
53
54
55
56
57
58
59
60

Results

Between 1995 and 2011, across the study countries, the average proportion of expenditure controlled by subnational governments increased slightly from 27% to 33%. During this time those countries which tended to experience a greater increase in devolution also tended to experience a greater decline in economic differences between regions (as measured by the Gini-coefficient of regional GDP, $r=0.29$, $p<0.001$). However, those countries which experienced a greater increase in devolution also tended to experience a greater *increase* in health inequalities between regions ($r=0.47$, $p<0.001$) (see Figure 1).

The multivariable regression analyses indicated broadly similar associations when controlling for economic trends in each country and country fixed effects. As Table 1 shows, each additional percentage of government expenditure managed at the subnational level reduced the Gini-coefficient of regional GDP by -0.17 points (95% CI -0.33 to -0.01; $p=0.04$). With each additional percentage of government expenditure managed at the subnational level the SII of regional life expectancy increased by 23 days (95% CI -2 to 48), although this was just below significance at the 5% level ($p=0.07$). When additionally controlling for the Gini-coefficient of regional GDP in this model, however, the association increased and was significant ($p=0.01$). This suggests the association between increased devolution and higher health inequalities was mitigated to some extent through the effect of increased devolution reducing regional economic inequalities. When the mediating pathway between devolution and health inequalities via economic inequalities was held constant (by controlling for it in the analysis), we saw a larger significant association between increased devolution and increased regional health inequalities.

Our results were broadly comparable when limiting data to prior to the economic crisis (2008), or using the proportion of taxation raised at the subnational level as our indicator of fiscal devolution, or only including countries with the full 17 years of data. The distributed lag models indicated that the association between fiscal devolution and reduced economic inequality was greatest for a lag of two years. For the other models, there the association was greatest with the fiscal devolution variable lagged by 1 year (see Appendix 4).

Formatted: Highlight

Discussion

Main findings

As has been the case in previous studies (7, 11) we found increased devolution was associated with reduced regional economic inequalities. However, the impact on health inequalities was not straightforward. We found increases in devolution were associated with *increased* regional health inequalities, although this was only significant if trends in regional economic inequalities were controlled for. This suggests the direct effect of increased devolution was to increase health inequalities, but because devolution also tended to reduce regional economic inequalities, this mitigated some of the direct negative impacts of devolution on regional health inequalities.

What is already known

There has been a growing trend in Europe towards greater fiscal devolution (1). Several studies have shown that greater fiscal devolution is associated with and this has led to decreased economic inequalities between regions within countries (3, 7-11). ~~It is thought~~ ~~thought to be because more~~ that localised decision-making may leads to more effective and efficient use of resources as it is informed by local knowledge about needs and is accountable to local populations and that this may contribute to reduced regional economic inequalities (15). These benefits appear to outweigh any negative effects fiscal devolution may have on regional economic inequalities.

We do not know the health inequalities impact of ~~this devolution policy~~ policy. The few studies which have investigated the health inequalities effect of devolution in high income countries have tended to investigate the effects of devolution ~~on~~ of health care expenditure. An Italian study (33), found a reform which devolved a large proportion of healthcare expenditure was associated with a reduction in inequalities in self-reported health *within* regions, but it did not investigate the effect on inequalities between regions. Costa-Font & Gil (18) found no association between devolution of health care expenditure in Spain and inequalities in reported health status. A Canadian study found healthcare devolution was followed by an increase in inequalities in health status (19). However, although we know that public investment across multiple sectors (education, employment, environment and

Formatted: Font color: Red

Formatted: Font color: Red

Formatted: Font color: Red

Formatted: Font color: Red

Formatted: Font color: Red

Formatted: Font color: Red

Formatted: Font color: Red

Comment [BB5]: We have never suggested devolution has a negative effect on wealth redistribution – we have suggested it might have a negative effect on the redistribution of public resources for services – this is something very different from wealth. And we don't even know if that is true – its just a hypothesis – so not already known.

Formatted: Font color: Red

Formatted: Font color: Red

Formatted: Check spelling and grammar

Formatted: Font color: Red

~~housing, health, education, housing, employment~~) has the ~~we~~ potential to influence health, ~~we~~ do not know whether increased fiscal devolution of public expenditure in general ~~across~~ Europe ~~is~~ is associated with a decrease or an increase in health differences between regions within European countries. -

Formatted: Font color: Red

What this study adds

Our results indicate that whilst devolution may be an effective approach to reducing regional economic inequalities, this does not necessarily translate into reduced health inequalities. In fact, the opposite may be true, and devolution may increase health inequalities between regions. There are several reasons why fiscal devolution ~~could be~~ is associated with reduced regional differences in GDP whilst being associated with increased regional differences in life expectancy.

Firstly, it could be that the ability to redistribute resources from wealthier regions to poorer regions is particularly important for addressing health inequalities - and this capacity is reduced in more devolved administrations, leading to under-funded health and social services in poorer regions. Other research has shown that centrally-planned targeting of resources to disadvantaged areas has been associated with reduced health inequalities (16, 17).

Secondly, greater local control over public investment decisions may lead to local legislation and investment in projects that which have primarily economic benefits and limited health benefits. Investment in infrastructure projects, attracting outside investment or public popularity may be prioritised above health; and thus, economic efficiencies may not translate into population health benefits. — such as infrastructure projects — which do not translate into population health benefits. Local governments may also be more susceptible to lobbying from corporations and local businesses, undermining their capacity to implement public health legislation – such as ~~that~~ controlling access to alcohol or unhealthy foods, or reducing environmental pollution. Whilst local businesses may seek to reduce regulations ~~that that~~ have public health benefits but are seen as a barrier to economic growth. (34).

Formatted: Font color: Red

Formatted: Font color: Red

Formatted: Font color: Red, Strikethrough

Formatted: Font color: Red

Formatted: Font color: Red

Formatted: Font color: Red

Formatted: Font color: Auto

~~There is also evidence local areas may be susceptible to the power of corporations who are have more resources at their disposal to be able to overturn local public health decisions. (34).~~

Finally, it could also be that the reduction in regional differences in GDP that are associated with increased fiscal devolution do not represent a reduction in inequalities in the life chances

of the populations living in different regions. For example, in more devolved administrations where there is greater regional control over the setting of tax rates, poorer regions may try and compete with other regions to attract external investment by reducing taxes. This could lead to increased capital flows into poorer regions – reducing regional differences in GDP – however these increases in regional GDP may not translate into widespread improvements in wages (35). Furthermore the reduced levels of taxation in these regions then Greater competition for business between regions could reduce income for public service provision, further widening inequalities in life chances. – There may also be regions which struggle more to attract investment, for example rural areas without transport connectivity (36). There is also evidence local areas may be susceptible to the power of corporations who are have more resources at their disposal to be able to overturn local public health decisions (34). However, this may increase economic inequalities within regions and could reduce the resources available for public investment in health and social services (35).

Formatted: Font color: Red

Formatted: Font color: Red

Formatted: Font color: Red

Formatted: Font color: Red

Formatted: Font color: Red, Strikethrough

Formatted: Font color: Red

Formatted: Font color: Red

Formatted: Font color: Red

Our findings have important implications for policies that aim to devolve greater resources to subnational levels. They indicate that even if such policies reduce economic differences between regions, they could still increase health differences. Therefore, policies should not be purely focused on economic growth or even just on reducing economic inequalities between regions. Mitigating actions will need to be taken to ensure health inequalities are not increased by these policies and to maximise the potential for such policies to reduce health inequalities (37).

Strengths and limitations of this study

Our findings need to be understood in the context of several limitations. Firstly, because our study analysed data at the aggregate level, we cannot know whether the findings reflect associations at the individual level. For example, it could be that whilst there was an association between increased devolution and increased regional health inequalities, health inequalities could have concurrently reduced within regions as was found in the study of health care devolution in Italy (33).

Secondly, the measure of devolution we used – the proportion of government expenditure managed at the subnational level - only reflects a component of devolution. In practice, the nature of devolution differs greatly between countries, with differences in the level of

1
2
3
4
5
6
7
8
9
10
11
12
13
14
15
16
17
18
19
20
21
22
23
24
25
26
27
28
29
30
31
32
33
34
35
36
37
38
39
40
41
42
43
44
45
46
47
48
49
50
51
52
53
54
55
56
57
58
59
60

devolution between tiers of government and between regions. Models vary between federal governments with three tiers, such as Belgium, to unitary governments with one level but with some autonomous regions, such as in Portugal (38). In some countries, devolution relates primarily to decisions over expenditure, in others to tax raising powers, and in others to legislative freedoms. In this study, we have focused on one measure of fiscal devolution, and we have not been able to investigate differential impacts of alternative approaches to devolution across the study countries. However, our findings did not change when using the proportion of tax revenue raised at the subnational level (rather than the level of expenditure controlled at the subnational level) as the measure of devolution.

Thirdly, due to limitations in the data available the sample size was relatively small; therefore, the analysis may have been underpowered and our estimates are relatively imprecise. Fourthly, it is possible the associations we observed were due to other confounding factors that we were not able to take into account in the analysis. However, by analysing change over time across countries, our analysis provides more robust evidence than simple cross-sectional analyses. This enabled us to control for potentially unobserved time-invariant confounders that could vary between countries. Finally, our investigation of whether regional economic inequalities mediate the effect of fiscal devolution on regional health inequalities assumes trends in regional health inequalities are not a major cause of regional economic inequalities. If this was the case, we would be conditioning on a common effect of exposure and outcome and the increased association observed in model 3 could then be the result of collider bias (39).

Conclusion

Across the 14 European countries included in our analysis, whilst increased fiscal devolution was associated with decreased regional economic inequalities, it was associated with increased regional health inequalities. Policies which promote increased fiscal devolution should aim to minimise any negative impacts on health inequalities and to maximise positive impacts. This could include ensuring that devolution is combined with policies for inclusive economic growth (40) and a progressive system for redistribution of resources both between regions and between individuals through a comprehensive welfare system (23).

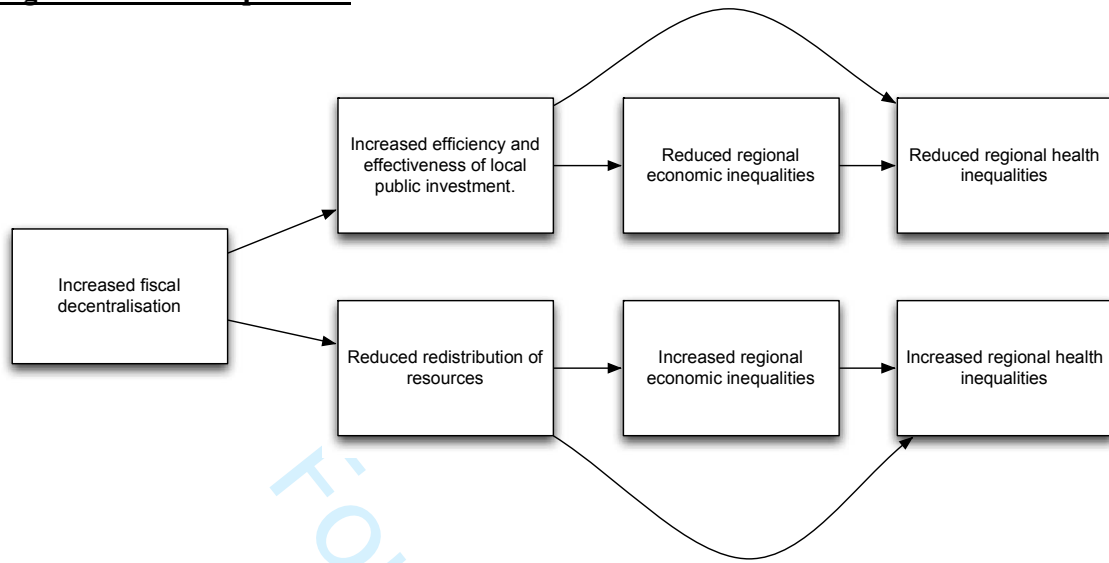
References

1. Polverari L. Does Devolution Increase Accountability? Empirical Evidence from the Implementation of European Union Cohesion Policy. *Regional Studies*. 2015; 49:1074-86.
2. Association LG. Briefing - Greater Manchester Health and Social Care Partnership. . 2015 [cited 2015 5 March]; Available from: http://www.local.gov.uk/web/guest/adult-social-care/-/journal_content/56/10180/7060676/ARTICLE.
3. City Growth Commission. Unleashing Metro Growth Final Recommendations of the City Growth Commission. London2014.
4. Blöchliger H, Vammalle C. Denmark: The Local Government Reform. Reforming Fiscal Federalism and Local Government: Beyond the Zero-Sum Game. Paris: OECD Publishing; 2012.
5. Council of European Municipalities and Regions. Decentralisation at a crossroads: Territorial reforms in Europe in times of crisis. Brussels: Council of European Municipalities and Regions (CEMR)2013.
6. Marmot M. Health inequalities in the EU: Final report of a consortium2013.
7. Canaletta CG, Arzoz PP, Garate MP. Regional Economic Disparities and Decentralisation. *Urban Studies*. 2004; 41:71–94.
8. Beila J, Hennl A, Kaiser A. Combining Federalism and Decentralization: Comparative Case Studies on Regional Development Policies in Switzerland, Austria, Denmark, and Ireland. *Comparative Political Studies*. 2012; 45:447 –76.
9. Ezcurra R, Pascual P. Fiscal decentralization and regional disparities: evidence from several European Union countries. *Environment and Planning*. 2008; 40:1185-201.
10. Governatori M, Yim D. Fiscal Decentralisation and Fiscal Outcomes. Brussels, Belgium: European Commission, Directorate-General for Economic and Financial Affairs2012.
11. Lessmann C. Regional Inequality and Decentralization: An Empirical Analysis. *Environment and Planning A*. 2012; 44:1363-88.
12. Robalino DA, Picazo OF, Voetberg A. Does Fiscal Decentralization Improve Health Outcomes? Evidence from a Cross-Country Analysis. Paris, France2001.
13. Oates WE. On the Theory and Practice of Fiscal Decentralization Maryland, USA: Institute for Federalism and Intergovernmental Relations (IFIR)2006.
14. Greater Manchester Combined Authority. Taking Charge of our Health and Social Care in Greater Manchester: The Plan. Manchester2015.
15. Asfaw A, Frohberg K, James KS, Jutting JP. Modeling the Impact of Fiscal Decentralization on Health Outcomes: Empirical Evidence from India. Bonn, Germany: Center for Development Research, University of Bonn2004.
16. Barr B, Bamba C, Whitehead M. The impact of NHS resource allocation policy on health inequalities in England 2001-11: longitudinal ecological study. *BMJ : British Medical Journal*. 2014; 348.
17. Barr B, Higgeson J, Whitehead M. Investigating the impact of the English health inequalities strategy: time trend analysis. *BMJ*. 2017; 358.
18. Costa-Font J, Gil J. Exploring the Pathways of Inequality in Health, Access and Financing in Decentralised Spain. London: London School of Economics and Political Science2008.
19. Zhong H. The impact of decentralization of health care administration on equity in health and health care in Canada. *International Journal of Health Care Finance Economics*. 2010; 10:219–37.

20. Health Affairs. Health Policy Brief: The Relative Contribution Of Multiple Determinants To Health Outcomes. Maryland Health Affairs & Robert Wood Johnson Foundation; 2014.
21. National Institute for Health and Care Excellence. Health inequalities and population health. London: National Institute for Health and Care Excellence 2012.
22. Ojuka P, Boum Y, Denoeud-Ndam L, Nabasumba C, Muller Y, Okia M, et al. Early biting and insecticide resistance in the malaria vector *Anopheles* might compromise the effectiveness of vector control intervention in Southwestern Uganda. *Malaria Journal*. 2015; 14:148.
23. Mackenbach J, Kunst E. Measuring the Magnitude of Socio-Economic Inequalities in Health: An Overview of Available Measures Illustrated with Two Examples from Europe. *Social Science & Medicine*. 1997; 44:757-71.
24. Regional Statistics and Indicators. 2015.
25. Van Kerm P. Stata module to compute measures of inequality, ideas. Boston College, Department of Economics; 2007 [cited 2016 13 October]; Available from: <https://ideas.repec.org/c/boc/bocode/s416401.html>.
26. Bank TW. GINI index (World Bank estimate). 2015.
27. Cribb J, Joyce R, Phillip D. Living Standards, Poverty and Inequality in the UK: 2012. . London: The Institute for Fiscal Studies 2012.
28. CEMR. Crisis and decentralisation (Council of European Municipalities and Regions). 2014 [cited 2015 7 August]; Available from: <http://www.ccre.org/en/activites/view/13>.
29. Owyang MT, Sekhposyan T, Vermann EK. Output and Unemployment How Do They Relate Today? *The Regional Economist* 2013. p. 4-9.
30. Labour markets at regional level. In: Eurostat, editor. 2015.
31. Torres-Reyna O. Panel Data Analysis Fixed and Random Effects using Stata. Princeton, USA: Princeton University 2007.
32. Jiménez-Rubio D. The impact of fiscal decentralization on infant mortality rates: Evidence from OECD countries. *Social Science & Medicine*. 2011; 73:1401-7.
33. Di Novi C, Piacenza M, Robone S, Turati G. How does fiscal decentralization affect within-regional disparities in well-being? Evidence from health inequalities in Italy. . Venice, Italy. 2015.
34. Katikireddi SV, Smith KE, Stuckler D, McKee M. Devolution of power, revolution in public health? *Journal of Public Health*. 2017; 39:241-7.
35. Alves J, Peralta S, Perelman J. Efficiency and equity consequences of decentralization in health: an economic perspective. *Revista Portuguesa de Saúde Pública*. 2013; 31:74-83.
36. Social Mobility Commission. State of the Nation 2017: Social Mobility in Great Britain. London 2017.
37. OECD. OECD Territorial Reviews: Sweden 2010. Paris, France: OECD Publishing 2010.
38. Allain-Dupré D. Decentralisation trends in OECD countries: a comparative perspective for Ukraine: OECD, Regional Development Policy Division; 2016.
39. Cole SR, Platt RW, Schisterman EF, Chu H, Westreich D, Richardson D, et al. Illustrating bias due to conditioning on a collider. *International Journal of Epidemiology*. 2010; 39:417-20.
40. Saunders M, Barr B, McHale P, Hamelmann C. Key Policies for Addressing the Social Determinants of Health and Health Inequities. Copenhagen 2017.

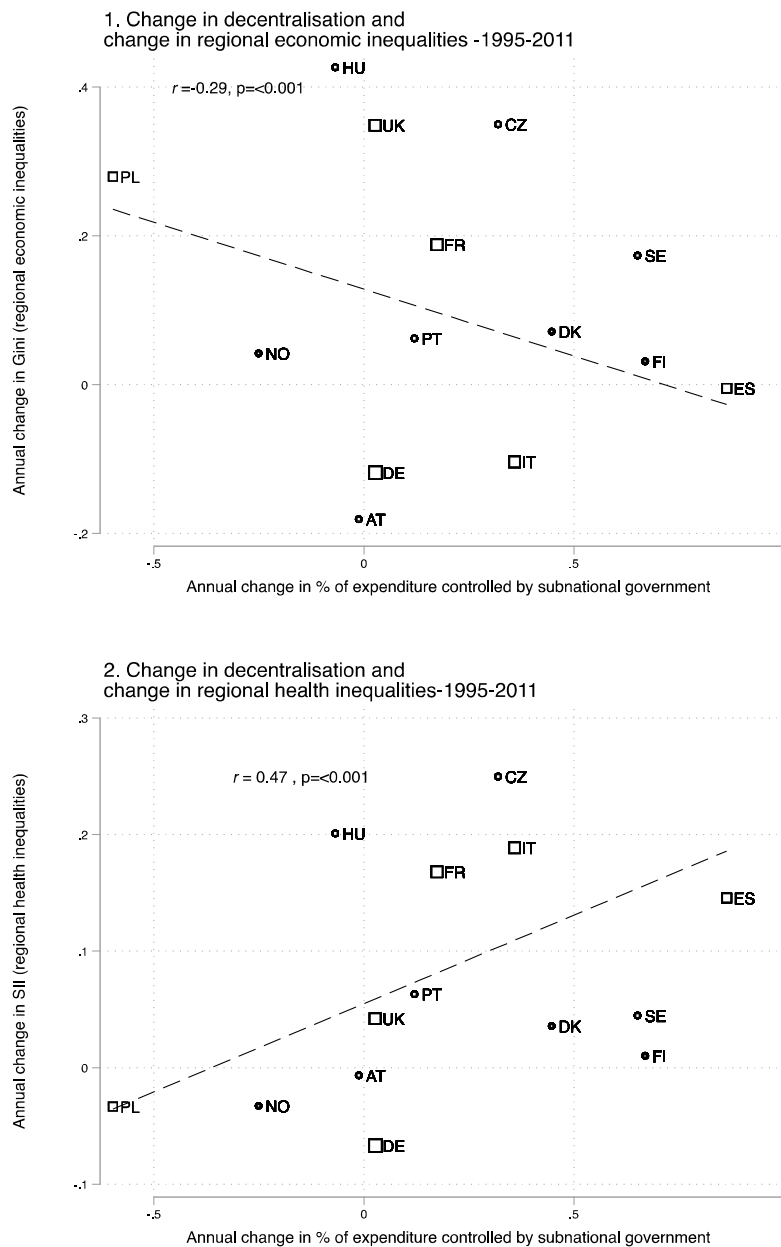
1
2
3
4
5
6
7
8
9
10
11
12
13
14
15
16
17
18
19
20
21
22
23
24
25
26
27
28
29
30
31
32
33
34
35
36
37
38
39
40
41
42
43
44
45
46
47
48
49
50
51
52
53
54
55
56
57
58
59
60

Diagram 1. Logic model relating fiscal devolution to regional economic inequalities and regional health inequalities.



For Peer Review

Figure 1: Scatter plots showing the association between the average annual change in the level of devolution in each country and (1) the average annual change in regional economic inequalities and (2) the average annual change in regional health inequalities. Number of years included on the analysis for each country shown in key below.



Key: AT – Austria (17yrs), CZ – Czech Republic (17yrs), DE – Germany (12 yrs), DK – Denmark (12 yrs), FI – Finland (17yrs), FR – France (17yrs), ES – Spain (17yrs), HU – Hungary (16yrs), IT – Italy (17yrs), NO – Norway (15yrs), PL – Poland (2yrs), PT – Portugal (17yrs), SE – Sweden (17yrs), UK – United Kingdom (17yrs).

Table 1: Association between increased devolution and change in regional economic inequalities (model 1) and regional health inequalities (model 2). Model 3 shows change in regional health inequalities associated with increased devolution, when controlling for change in regional economic inequalities.

	Model	Coefficient	95%CI		p-value
Change in regional Gini for each additional 1% of expenditure controlled at the subnational level.	1	-0.17	-0.33	-0.01	0.04
Change in SII (in years of life expectancy) for each additional 1% of expenditure controlled at the subnational level.	2	23.28	-1.67	48.23	0.07
Change in SII (in years of life expectancy) for each additional 1% of expenditure controlled at the subnational level. (Additionally controlling for regional Gini).	3	31.95	7.37	56.53	0.01

Note: Models based on equations C shown in online supplementary appendix 2 and included controls for country fixed effects, time trends, national unemployment rate and national GDP, full model results are given in online supplementary appendix 3).

Appendix 1. Web table 1. Number of observations and minimum and maximum values

Number of observations and minimum and maximum values				
Variable	Number of observations	Number of values	Min	Max
year	210	17	1995	2011
proportion of devolution	210	210	11.56663	62.90967
Total expenditure	203	203	18683.8	1215270
percentage unemployed	210	93	2.5	21.4
national population	210	210	4405156	82500000
national GDP	210	209	11718	49396
number of regions	210	11	5	22
Slope Index of regional life expectancy	210	210	-2.087478	6.439848
Gini of regional GDP	210	210	7.212533	22.75613
total public expenditure	203	203	1811.984	31690.29

Appendix 2. Model formula.**Model formula.**

Specifically we estimated the following models:

$$\text{Model1: } \text{GINI}_{i,t} = \beta_1 \text{DEVOL}_{,i,t} + \beta_2 \text{NATUNEMP}_{,i,t} + \beta_3 \text{NATGDP}_{,i,t} + \beta_4 \text{YEAR+CONS} + \mu_i + \varepsilon_{i,t}$$

$$\text{Model2: } \text{SII}_{i,t} = \beta_1 \text{DEVOL}_{,i,t} + \beta_2 \text{NATUNEMP}_{,i,t} + \beta_3 \text{NATGDP}_{,i,t} + \beta_4 \text{YEAR+CONS} + \mu_i + \varepsilon_{i,t}$$

$$\text{Model2: } \text{SII}_{i,t} = \beta_1 \text{DEVOL}_{,i,t} + \beta_2 \text{GINI}_{i,t} + \beta_3 \text{NATUNEMP}_{,i,t} + \beta_4 \text{NATGDP}_{,i,t} + \beta_5 \text{YEAR+CONS} + \mu_i + \varepsilon_{i,t}$$

Where GINI is the Gini coefficient of regional gdp in country i in year t

DEVOL is the proportion of government expenditure managed at the sub regional level in country i in year t

NATUNEMP is the national unemployment rate in country i in year t

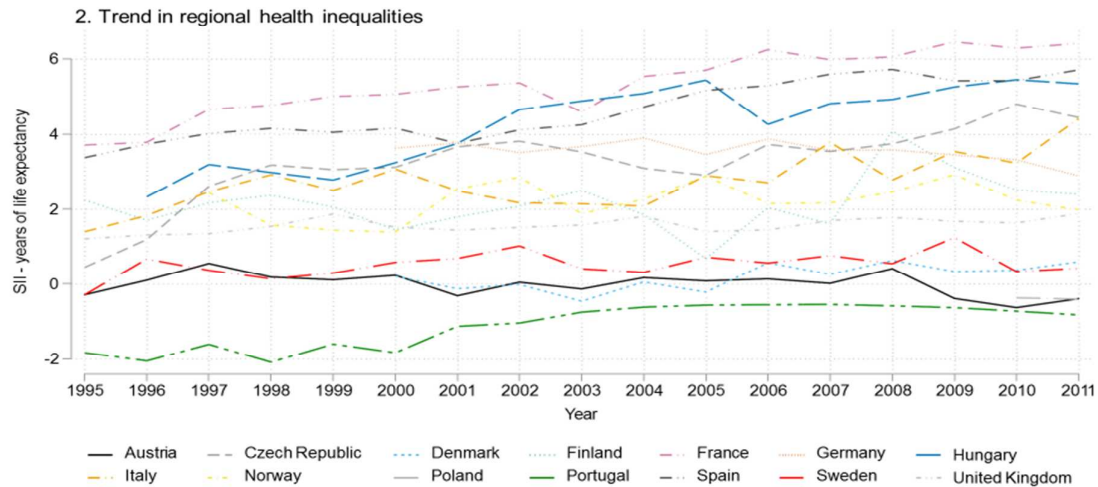
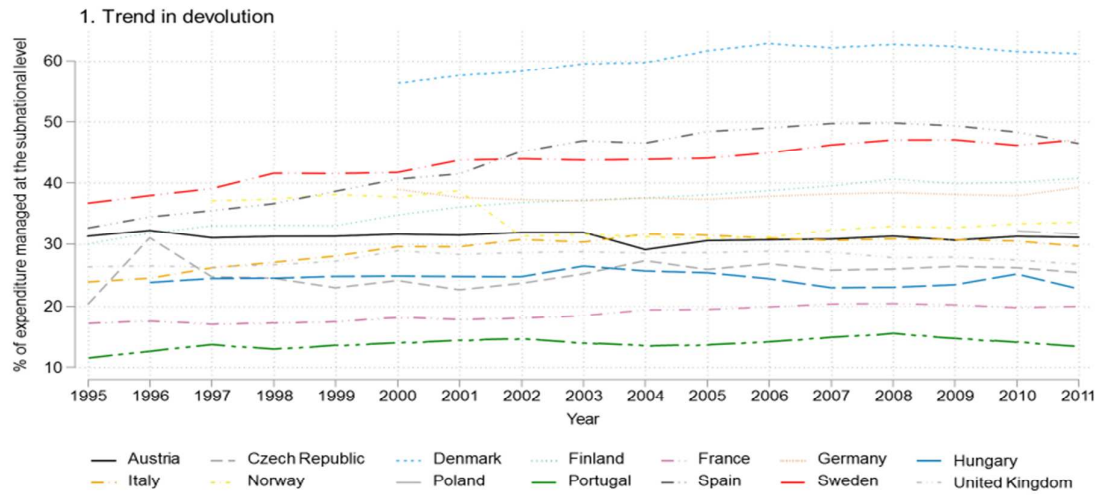
NATGDP is the national GDP per capita in country i in year t

CONS is a constant.

μ_i is a fixed effect for each country i

$\varepsilon_{i,t}$ is an error term

Appendix 3. Trends in devolution, regional health inequalities and regional economic inequalities.



Appendix 4: Sensitivity tests

We undertook several sensitivity tests to investigate the robustness of these models, including controls for total government expenditure, and only including countries with the full 17 years of data. These models showed broadly comparable results (see appendix 4).

Web table 2: Limiting analysis to period prior to the economic crisis (2008) - association between increased devolution and change in regional economic (model 1) and health (model 2) inequalities. Model 3 shows change in health inequalities associated with increased devolution, when controlling for change in economic inequalities.

	Model	Coefficient	95%CI		p-value
Change in regional Gini for each additional 1% of expenditure controlled at the subnational level.	1	-0.17	-0.32	-0.01	0.04
Change in SII (in days of life expectancy) for each additional 1% of expenditure controlled at the subnational level.	2	15.85	-6.33	38.03	0.15
Change in SII (in days of life expectancy) for each additional 1% of expenditure controlled at the subnational level. (Additionally controlling for regional Gini).	3	22.77	-0.25	45.79	0.05

Note: Models based on equations shown in online supplementary appendix 2 and included controls for country fixed effects, time trends, national unemployment rate and national GDP, full model results are given in online supplementary appendix 3).

Web table 3: Only including countries with the full 17 years of data. - Association between increased devolution and change in regional economic (model 1) and health (model2) inequalities. Model 3 shows change in health inequalities associated with increased devolution, when controlling for change in economic inequalities.

	Model	Coefficient	95%CI		p-value
Change in regional Gini for each additional 1% of expenditure controlled at the subnational level.	1	-0.24	-0.35	-0.13	0
Change in SII (in years of life expectancy) for each additional 1% of expenditure controlled at the subnational level.	2	16.6	-5.74	38.94	0.12
Change in SII (in years of life expectancy) for each additional 1% of expenditure controlled at the subnational level. (Additionally controlling for regional Gini).	3	21.42	2.41	40.43	0.03

Note: Models based on equations shown in online supplementary appendix 2 and included controls for country fixed effects, time trends, national unemployment rate and national GDP, full model results are given in online supplementary appendix 3).

Web table 4: Including controls for total government expenditure - association between increased devolution and change in regional economic (model 1) and health (model2) inequalities. Model 3 shows change in health inequalities associated with increased devolution, when controlling for change in economic inequalities.

	Model	Coefficient	95%CI		p-value
Change in regional Gini for each additional 1% of expenditure controlled at the subnational level.	1	-0.16	-0.32	0.01	0.06
Change in SII (in years of life expectancy) for each additional 1% of expenditure controlled at the subnational level.	2	24.27	-5.34	53.87	0.1
Change in SII (in years of life expectancy) for each additional 1% of expenditure controlled at the subnational level. (Additionally controlling for regional Gini).	3	33.65	8.1	59.19	0.01

Note: Models based on equations shown in online supplementary appendix 2 and included controls for country fixed effects, time trends, national unemployment rate and national GDP, full model results are given in online supplementary appendix 3).

Web table 5: Changing the devolution variable to subnational tax revenue - association between increased devolution and change in regional economic (model 1) and health (model2) inequalities. Model 3 shows change in health inequalities associated with increased devolution, when controlling for change in economic inequalities.

	Model	Coefficient	95%CI		p-value
Change in regional Gini for each additional 1% of expenditure controlled at the subnational level.	1	-0.14	-0.22	-0.06	<0.01
Change in SII (in years of life expectancy) for each additional 1% of expenditure controlled at the subnational level.	2	14.29	-5.15	33.73	0.14
Change in SII (in years of life expectancy) for each additional 1% of expenditure controlled at the subnational level. (Additionally controlling for regional Gini).	3	22	0.7	43.3	0.04

Appendix 5: Values of fiscal devolution (percentage of expenditure managed at the sub national level) by country.

Web table 6: Including a fiscal devolution variable lagged by 0,1,2 and 3 years- association between increased devolution and change in regional economic (model 1) and health (model2) inequalities. Model 3 shows change in health inequalities associated with increased devolution, when controlling for change in economic inequalities.

country	1995	1996	1997	1998	1999	2000	2001	2002	2003	2004	2005	2006	2007	2008	2009	2010	2011
Austria	31	32	31	31	31	32	31	32	32	29	31	31	31	31	31	31	31
Czech Republic	20	31	25	25	23	24	23	24	25	27	26	27	26	26	26	26	25
Denmark						56	58	58	60	60	62	63	62	63	62	62	61
Finland	30	32	33	33	33	35	36	37	37	38	38	39	40	41	40	40	41
France	17	18	17	17	18	18	18	18	19	19	20	20	20	20	20	20	20
Germany						39	38	37	37	38	37	38	38	38	38	38	39
Hungary		24	24	25	25	25	25	25	26	26	25	24	23	23	23	25	23
Italy	24	25	26	27	28	30	30	31	30	32	31	31	31	31	31	30	30
Norway			37	37	38	38	39	31	32	31	31	31	32	33	33	33	34
Poland																32	32
Portugal	12	13	14	13	14	14	14	15	14	14	14	14	15	16	15	14	13
Spain	33	34	35	37	39	41	41	45	47	47	48	49	50	50	49	48	46
Sweden	37	38	39	42	42	42	44	44	44	44	44	45	46	47	47	46	47
United Kingdom	26	27	26	27	27	29	28	29	29	29	29	29	29	28	28	27	27