



Mileto, S., Kaiser, E., Rassamakin, J., Whelton, H., & Evershed, R. (2018). Differing modes of animal exploitation in North-Pontic Eneolithic and Bronze Age Societies. *Science and Technology of Archaeological Research*, 112-125. <https://doi.org/10.1080/20548923.2018.1443547>

Publisher's PDF, also known as Version of record

Link to published version (if available):  
[10.1080/20548923.2018.1443547](https://doi.org/10.1080/20548923.2018.1443547)

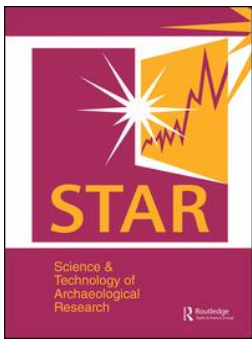
[Link to publication record in Explore Bristol Research](#)  
PDF-document

This is the final published version of the article (version of record). It first appeared online via Taylor and Francis at <https://www.tandfonline.com/doi/pdf/10.1080/20548923.2018.1443547?needAccess=true>. Please refer to any applicable terms of use of the publisher.

## **University of Bristol - Explore Bristol Research**

### **General rights**

This document is made available in accordance with publisher policies. Please cite only the published version using the reference above. Full terms of use are available:  
<http://www.bristol.ac.uk/pure/about/ebr-terms>



## Differing modes of animal exploitation in North-Pontic Eneolithic and Bronze Age Societies

Simona Mileto, Elke Kaiser, Yuri Rassamakin, Helen Whelton & Richard P. Evershed

To cite this article: Simona Mileto, Elke Kaiser, Yuri Rassamakin, Helen Whelton & Richard P. Evershed (2017) Differing modes of animal exploitation in North-Pontic Eneolithic and Bronze Age Societies, STAR: Science & Technology of Archaeological Research, 3:1, 112-125, DOI: [10.1080/20548923.2018.1443547](https://doi.org/10.1080/20548923.2018.1443547)

To link to this article: <https://doi.org/10.1080/20548923.2018.1443547>



© 2018 The Author(s). Published by Informa UK Limited, trading as Taylor & Francis Group



Published online: 20 Mar 2018.



Submit your article to this journal [↗](#)



Article views: 196



View related articles [↗](#)



View Crossmark data [↗](#)

# Differing modes of animal exploitation in North-Pontic Eneolithic and Bronze Age Societies

Simona Mileto<sup>a,b</sup>, Elke Kaiser<sup>a</sup>, Yuri Rassamakin <sup>c</sup>, Helen Whelton<sup>b</sup> and Richard P. Evershed<sup>b</sup>

<sup>a</sup>Institut für Prähistorische Archäologie, Freie Universität Berlin, Berlin, Germany; <sup>b</sup>Organic Geochemistry Unit, Biogeochemistry Research Centre, School of Chemistry, University of Bristol, Bristol, United Kingdom; <sup>c</sup>Institute of Archaeology of the National Academy of Sciences, Kiev, Ukraine

## ABSTRACT

This paper presents new results of an interdisciplinary investigation of the diet and subsistence strategies of populations living in the North-Pontic region during the Eneolithic and the Early Bronze Age (ca. 3800 BC to the 2500 BC). New organic residue analyses of >200 sherds from five Eneolithic sites and two Early Bronze Age settlements are presented. The molecular and stable isotope results are discussed in relation to zooarchaeological evidence. Overall, the findings suggest that each community relied on either a hunting- or a husbandry-based subsistence strategy dependent upon the ecosystem in which they settled; horses and wild animals dominated subsistence in the forest-steppe communities in contrast to ruminant husbandry in the steppe.

## ARTICLE HISTORY

Received 21 July 2017  
Accepted 17 February 2018

## KEYWORDS

Prehistoric North-Pontic region; animal exploitation; organic residues; carbon isotopes

## 1. Introduction

The vast Eurasian steppe belt has been studied by many scholars, and the exploitation of this arid zone in late prehistory has been a subject of particular interest for western researchers over the last two decades (Boyle, Renfrew, and Levine 2002; Levine, Renfrew, and Boyle 2003). The various innovations discussed as originating in the Eurasian steppe zone, for example ox-drawn wooden wagons with four solid disc wheels, horse domestication and cord ornamentation on vessels, have attracted the attention of many archaeologists (Kuzmina 2003; Sherratt 2003; Harrison and Heyd 2007). The Eurasian steppe zone is often considered as a “zone of contact” between various cultures of Europe and Asia. Innovations were transferred over vast distances from east to west and vice versa. During the last two years, new palaeogenetic evidence has been uncovered indicating migrations from the steppe to Central Europe involving a substantial number of people (Haak et al. 2015; Allentoft et al. 2015). This reinvigorated the controversial debate surrounding the homeland of Proto-Indo-European language. Several scholars have interpreted the new palaeogenetic data as supporting the hypothesis that the original speakers of PIE lived the western part of the Eurasian steppe (Kristiansen 2014 for a critical approach cf. Heyd 2016; Kaiser 2017).

The introduction of specialised animal husbandry and the emergence of mobile pastoralism, often

assumed to be closely connected with that introduction, still thought to constitute one of the early and highly influential innovations that took part in the Eurasian steppe zone (Merpert 1974; Kuzmina 2003; Anthony 2007). Although there been a tendency to consider the Eurasian steppe belt as a uniform ecosystem, it is indeed very diverse, stretching from Moldova and Ukraine in the west, to Mongolia in the east. The Ural Mountains can be considered as a natural border that divides this vast area into two very different ecosystems: the western Pontic region and the eastern Eurasia, each characterized by diverse soils, climatic zones, vegetation and faunal composition. The forest-steppe forms a transitional vegetation zone (ecotone according to Walter and Breckle 1977) between the steppe in the south and the forest in the north. This holds true for the region north of the Black Sea. Climatic features, vegetation and faunal composition change depending on the proximity to the Dnieper River, which is the main river that bisects the region, from north-west to south-east, and to the Black Sea, which is the southern border of the region.

The current study aimed at deepening the knowledge of the subsistence economy and lifestyle of the ancient societies that populated the Eneolithic and Bronze Age periods (ca. 3800–2500 BC) in the North-Pontic region. This period is characterized by transitions and changes: around 3100 BC a remarkable change in the burial practices can be observed. With

**CONTACT** Simona Mileto  [simona.mileto@gmail.com](mailto:simona.mileto@gmail.com)  Institut für Prähistorische Archäologie, Freie Universität Berlin, Fabeckstraße 23–25, 14195 Berlin, Germany; Organic Geochemistry Unit, Biogeochemistry Research Centre, School of Chemistry, University of Bristol, Bristol BS8 1TS, United Kingdom  
 Supplemental data for this article can be accessed at <https://doi.org/10.1080/20548923.2018.1443547>

© 2018 The Author(s). Published by Informa UK Limited, trading as Taylor & Francis Group  
This is an Open Access article distributed under the terms of the Creative Commons Attribution License (<http://creativecommons.org/licenses/by/4.0/>), which permits unrestricted use, distribution, and reproduction in any medium, provided the original work is properly cited.

the beginning of the Yamnaya culture in *sensu stricto*, the number of burials increases significantly. Grave construction and burial rites became far more homogeneous than they were in the 4<sup>th</sup> mill. BC. All graves of the Yamnaya culture are situated in or under a burial mound. The deceased were buried in a crouched position and often covered with ochre. The graves and most of the inventory objects are very similar over the very large area of the culture's dissemination, which stretches from the Transurals in the east to the Lower Danube in the west. Unfortunately, only a small number of settlements are known, most of them concentrated on the banks of the rivers Dnieper, Severskiy Donets and Don (Kaiser *n.d.*). Thus, reconstructions relating to the Yamnaya population are based (almost solely) on the interpretation of data from their graves.

Nevertheless, social and economic changes were reconstructed to have taken place during the 4<sup>th</sup> and the 3<sup>rd</sup> millennium BC: 'A special type of economy - the pastoralism - with herding predominant has formed in the steppe' (Kuzmina 2003, 203). However, zooarchaeological evidence is particularly scarce in this area and during this period, which means that the extent of animal domestication and dietary habits of the North Black Sea communities remain poorly understood. Consequently, there is an ongoing discussion concerning several aspects of the subsistence economy (Rassamakin 1999, 129–32).

It is believed that the transition to food production in North-Pontic region followed a trajectory different to that of the Central European Neolithic and Bronze Age and that 'the agricultural revolution took the character of stock-breeding' (Renfrew 2002). Domesticated cattle, sheep and goat are believed by many scholars to have appeared in the North-Pontic region at around the 6<sup>th</sup> millennium BC (Bunyatyan 2003; Kotova 2003; Kotova and Makhortykh 2010); the relatively late introduction of animal husbandry has been linked to environmental conditions in the steppe (e.g. Wechler 2001).

Lillie and Jacobs (2006) had previously emphasised the variability in access to dietary protein sources of the Mesolithic populations located in the Dnieper region (e.g. Lillie 1998; Lillie 2003; Lillie and Jacobs 2006). Specifically, they carried out stable isotope analysis on human, fauna and fish bones recovered from Neolithic and Eneolithic cemeteries located in the Middle and Lower Dnieper Basin of Ukraine (Lillie, Budd, and Potekhina 2011). The latter study supported a diet mainly based on C<sub>3</sub> terrestrial foodstuffs, supplemented with aquatic resources, such as freshwater fish. Nevertheless, reconstructing the subsistence economy and dietary habits of populations during a period of economic and social changes is challenging. The current picture is that the extent of animal domestication in this region is poorly defined. Our recent paper

(Mileto et al. 2017) revealed that the Mid-Eneolithic community of Dereivka (located in the forest-steppe along the Dnieper River) consumed predominantly equine products, together with smaller proportions of ruminant carcass products; no evidence for ruminants dairy processing could be seen in the cooking residues from pottery. The abovementioned results generally supported the previous bulk stable isotope investigations of human bones recovered from the Neolithic cemetery of Dereivka (Lillie, Budd, and Potekhina 2011). Further research in the North Black Sea region (e.g. Rassamakin 1999; Renfrew 2002; Kuzmina 2003; Bunyatyan 2003; Bendrey 2011) emphasized the importance of considering the influence of each regional ecosystem independently, since the adaptations of the lifestyles of the resident populations would have depended on the characteristics of the local environment. The current literature (Rassamakin 1999; Kuzmina 2003; Lillie, Budd, and Potekhina 2011; Mileto et al. 2017) strongly supports the hypothesis of interchangeable strategies of husbandry-hunting, dependent upon the regional ecosystems, which would have been very different in southeast compared to the northwest of the North Pontic (Kremenetski 2003).

Herein, we present the results of organic residues analysis of 216 potsherds from three Mid-Eneolithic sites (Dereivka, Molyukhov Bugor and Mikhailovka I), two Late-Eneolithic sites (Mikhailovka II and Nizhniy Rogachik) and two Early Bronze Age settlements (Mikhailovka III and Generalka). These results provide opportunities to test the hypotheses that: (1) a new form of subsistence economy, pastoralism, was introduced in the North-Pontic region at around the 3<sup>rd</sup> millennium BC, and (2) that animal exploitation and dietary habits were likely driven by the local environment. These sites were chosen on the basis of their geographical location (forest-steppe *versus* steppe sites; Figure 1). The findings from the lipid biomarker and stable isotope results are interpreted in relation to previously published zooarchaeological studies (Telegin 1986; Rassamakin 1999; Kaiser 2010; Zhuravlev & Markova 2000; Zhuravlev 2008).

## 2. The settlements

The investigated sites (Dereivka, Molyukhov Bugor, Mikhailovka I-II and III, Nizhniy Rogachik and Generalka) belong to three different cultures as shown in Table 1 (Rassamakin 1999). The Nizhniy Rogachik site has yet to be fully assigned to any of the known cultures. One of the excavators of the site, O.G. Shaposhnikova specifically named these materials as Rogachik type and dated them Late Eneolithic (contemporaneous to Late Tripolye period; Shaposhnikova 1972); therefore, it is possibly contemporaneous with Mikhailovka II (Spitsyna 2010). Generally, defining the

**Table 1.** Cultures and sites analysed in the current project.

| Culture                      | Sites                               | Location             | Periods         |
|------------------------------|-------------------------------------|----------------------|-----------------|
| Dereivka                     | Dereivka and Molyukhov Bugor        | Forest-steppe region | Ca. 3800-3500BC |
| Nizhnaya (Lower) Mikhailovka | Mikhailovka I                       | Steppe region        | Ca. 3800-3000BC |
| Repin Rogachik type          | Mikhailovka II and Nizhniy Rogachik | Steppe region        | Ca. 3500-3000BC |
| Yamnaya                      | Mikhailovka III and Generalka       | Steppe region        | Ca. 3000–2300BC |

chronology of Ukrainian sites is controversial; indeed, despite performing a consistent number of radiocarbon analysis (Telegin et al. 1986; Anthony & Brown 2003; Kotova & Videiko 2003; Kotova & Spitsyna 2003; Kotova 2008) the peculiar type of soil (*Chernozem*) obscures the archaeological layers producing a mixture of materials and introduces chronological uncertainties. As a consequence, common chronological subdivisions do not exist. Therefore, the current reconstruction is mainly based on the work of Rassamakin (1999) who proposed the chronology of the five sites and investigated potsherds based on existing radiocarbon analyses (Rassamakin & Kaiser n.d.) and ceramic features (i.e. decoration, ceramic matter, etc.). This cultural and chronological reconstruction forms the basis of the following discussions.

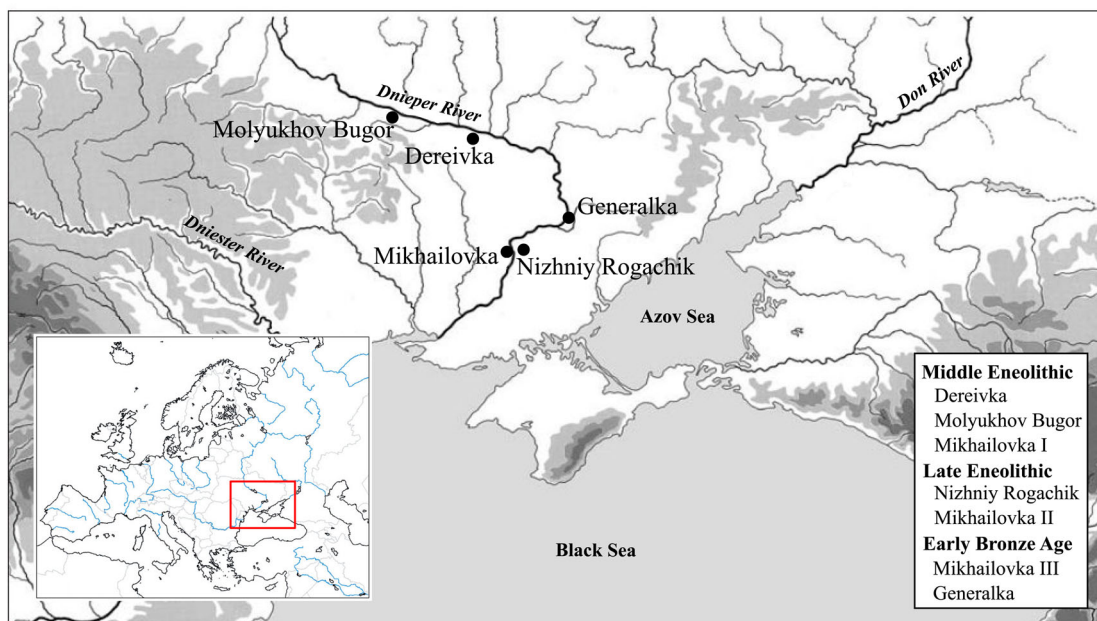
The Dereivka and Molyukhov Bugor sites are located in the forest-steppe area of the modern Cherkassy Region (Figure 1). The Dereivka settlement was situated on a promontory of the River Omelnik, a tributary of the Dnieper River. It is the best-investigated North-Pontic settlement of the Eneolithic (Telegin 1986); nevertheless, many questions remain concerning the chronology, subsistence economy and the status of horse domestication, amongst the community who inhabited this settlement (Levine 1990; Rassamakin 1999; Mileto et al. 2017). The Molyukhov Bugor site was part of Dereivka culture (Rassamakin

1999) and was located on the Dnieper River, near the village of Novoselitsa, Chigirin District (Kotova 2003; Neradenko 2013). Both of these forest-steppe sites were highly influenced by the neighbouring communities of the Tripolye culture, as suggested by several imported materials (Rassamakin 1999).

Contemporaneous with Dereivka and Molyukhov Bugor sites is the earlier layer of Mikhailovka (Rassamakin 1999). The two later Mikhailovka horizons date to the Late Eneolithic (II) and Early Bronze Age (III). Due to overlap of the two later horizons (II and III), the archaeological materials recovered from these layers have always been considered together, which complicates interpretations and dating. Overall, the Nizhnaya (Lower) Mikhailovka culture was influenced by Eneolithic western societies, including the Cucuteni-Tripolye culture, represented by numerous burials in kurgans located between the Molochnaya River and Danube (Rassamakin 1999: 92); the investigated sherds have been recovered from the lower horizon of Mikhailovka settlement on the lower Dnieper River.

The Late-Eneolithic Nizhniy Rogachik settlement was located on a plateau above River Konka and Dnieper (Telegin 1957; Shaposhnikova 1963; 1972; Spitsyna 2010). In comparison with the other investigated sites, the information about this settlement is extremely scarce.

Finally, the site of Generalka was located on the Khortytsia Island (Zaporozhia city). The settlement is

**Figure 1.** Map of the North-Pontic region showing the distribution of the five settlements investigated in the current study.

relatively extensive, covering an area of ca. 7000 m<sup>2</sup>, although only ca. 300 m<sup>2</sup> have been excavated. Thus, the information related to the Generalka community should be regarded as preliminary (Tuboltsev 2006, and internal reports); however, zooarchaeological analysis of the available material has been performed by M. Hochmuth from the German Archaeological Institute, Berlin (Kaiser 2010). Figure 2 displays few examples of analysed sherds and typical vessels shape from each site.

### 3. Archaeozoological evidence

Figure 3 presents the number of identified specimen (NISP%) of the different classes of animals. The latter are adapted from Kaiser (2010). The two Mid-Eneolithic faunal assemblages of Dereivka and Molyukhov-Bugor are dominated by wild animals and horses, 17% and 60%, respectively, for Dereivka, and 37% and 14%, respectively, for Molyukhov-Bugor. However, Molyukhov-Bugor faunal records also comprised a 49% of domesticated animals. In contrast, the Eneolithic and the Early Bronze Age steppe faunal records revealed that the majority of the faunal assemblages comprise domestic ruminants. Significantly, sheep and goats dominate the earlier horizon of Mikhailovka (65%), while the later horizons are dominated by cattle (59%). In general, wild animals were identified in all the settlements under study, including ruminant (e.g. European red deer, saiga-antilopes) and non-ruminant game (e.g. beaver, hare).

### 4. Methodologies

The analytical protocol followed has been described in detail in earlier papers (Evershed et al. 1990; Charters et al. 1993; Dudd & Evershed 1998; Copley et al. 2003). Lipid concentrations in cooking vessels are generally highest in rim or upper-body sherds, so these were selected wherever possible from vessel types likely to have been used for processing food, therefore with signs of cooking activities (e.g. charring and sooted). After cleaning, approximately 2 g samples of the potsherds were crushed with the lipids extracted with organic solvent by ultrasonication, yielding a total lipid extract (TLE). Aliquots of the TLEs were trimethylsilylated prior to gas chromatographic (GC) screening and GC-mass spectrometry (GC-MS). A further aliquot of the TLE was saponified and fatty acid methyl esters (FAMES) prepared. These FAMES were analysed by GC-combustion-isotope ratio MS (GC-C-IRMS) to determine compound-specific  $\delta^{13}\text{C}$  values.

The fats extracted from the pottery vessels were classified to principal commodity group by plotting their  $\delta^{13}\text{C}_{16:0}$  and  $\delta^{13}\text{C}_{18:0}$  values. Assignments were reached through the comparison of the  $\delta^{13}\text{C}$  values with those obtained from modern reference fats. Due

to the absence of modern Ukrainian reference isotope values, the identification of the archaeological fats were mainly achieved by comparing the stable carbon isotope composition of the archaeological fats with those of the modern fats from Kazakhstan (in Figures 5 and 6, the ranges defined with dotted lines; Stear 2008); however considering the very different environment of Kazakhstan comparing to Ukraine, the first 'universal' plot created by using a global reference database of modern fats (in Figure 5 and 6, the ranges defined with solid lines; Salque 2012) has been overlapped to the Kazakh template plot. In addition, in order to allow a better fat assignment, the  $\Delta^{13}\text{C}$  values ( $\delta^{13}\text{C}_{18:0} - \delta^{13}\text{C}_{16:0}$ ) have been mainly used. The latter better allows to separate animal fats removing the environmental signal, allowing differentiation between the fats of major domesticates (Mottram et al. 1999). Worth to note is that the modern equine fats used for the production of the template plots, mainly comes from the Kazakhstan (Stear 2008; Outram et al. 2012); therefore assigning an equine fats origin to an extract is more challenging.

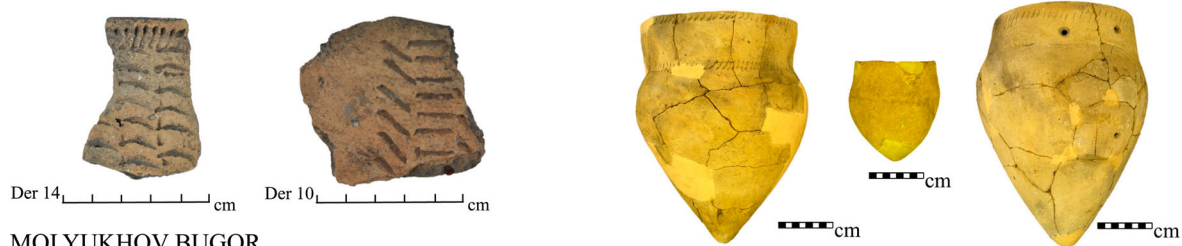
### 5. Results

Approximately 75% of the analysed prehistoric potsherds contained extractable lipid residues. Typical gas chromatographic profiles of the lipid residues displayed in Figure 4 show that the C<sub>16:0</sub> and C<sub>18:0</sub> fatty acids predominate, the high abundance of the latter confirming that the residues derive from animal fats (e.g. Evershed et al. 2002). Also abundant were saturated branched-chain and odd-carbon number fatty acids, including C<sub>15:0</sub>, C<sub>15:0br</sub>, C<sub>17:0</sub> and C<sub>17:0br</sub>, components of bacterial origin diagnostic of both ruminant animal products (Hubbard & Pocklington 1968; Christie 1978) and/or equine adipose products (Hintz 1994; Pond et al. 1995). TAGs and their degradation products (DAGs and MAGs) were observed in 14% of the residues (examples are showed in Figure 4b,c,d). Finally, two extracts showed mid-chain ketones (one example is displayed in Figure 4f), suggesting that the vessels were heated to ca. 300°C required for their formation (Evershed et al. 1991; 1995; Christie 2012).

The  $\Delta^{13}\text{C}$  values derived from the Mid-Eneolithic potsherds are displayed in Figure 5 to allow a better comparison between different palaeo-ecosystems (Mid-Eneolithic steppe and forest-steppe sites of Dereivka, Molyukhov Bugor and Mikhailovka I). While,  $\Delta^{13}\text{C}$  values derived from potsherds dating to the Late-Eneolithic and Early Bronze Age and located in the steppe (Mikhailovka II, III, Nizhniy Rogachik and Generalka sites) are shown in Figure 6.

Figure 5a,b reveals that an appreciable number of residues from Dereivka and Molyukhov-Bugor exhibit  $\Delta^{13}\text{C}$  values characteristic of equine products. Ruminant adipose products were identified in four

DEREIVKA



MOLYUKHOV BUGOR



MIKHAILOVKA I



NIZHNIY ROGACHIK



MIKHAILOVKA II



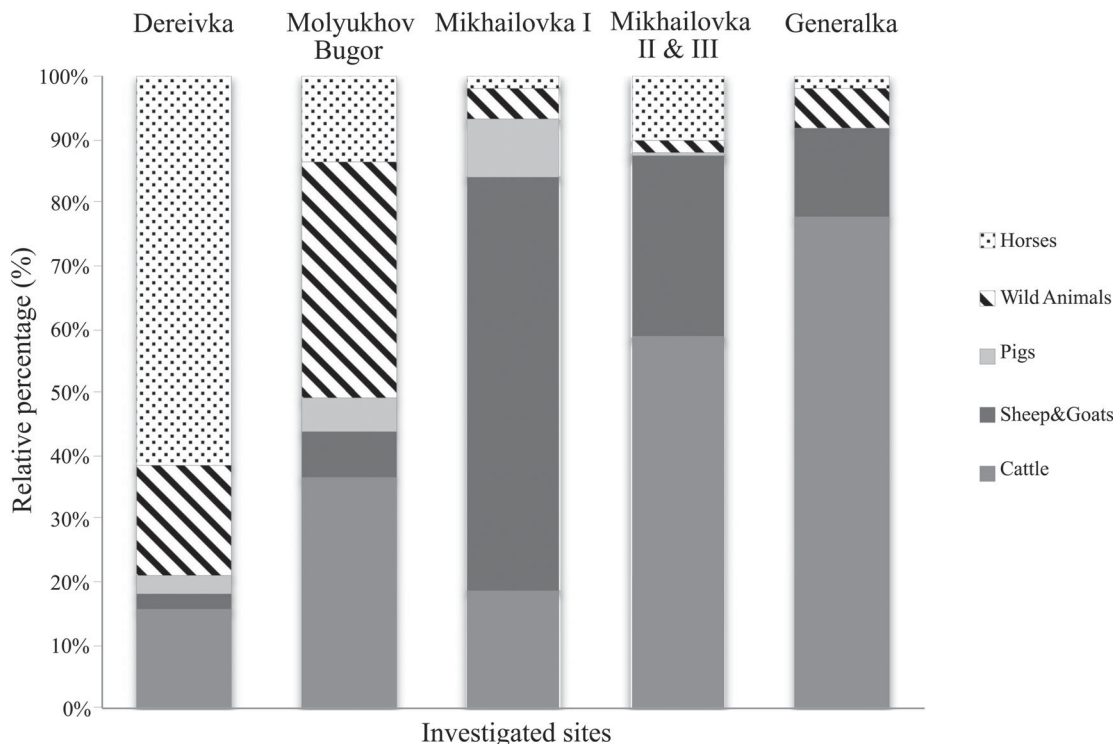
MIKHAILOVKA III



GENERALKA



Figure 2. Examples of sherds and vessel shapes analysed in the current research.



**Figure 3.** Relative proportions (NISP%) of the different classes of animals inferred from faunal records in Dereivka (Telegin 1986); Molyukhov-Bugor, (Bibikova 1963; Zhuravlev and Markova 2000; Zhuravlev 2008), ; Mikhailovka, II and III (Bibikova and Shevchenko 1962) and Generalka (Kaiser 2010; Tuboltsev 2006).

and three residues respectively. Only one Dereivka residue suggests a weak dairy fat contribution and one extract from each site exhibited carbon isotope composition of non-ruminant (porcine?) products (Mukherjee et al. 2007). Finally, five Dereivka residues suggest a possible freshwater fish oil origin (Mileto et al. 2017). Based on mixing models (all displayed in the Appendix) the remaining three extracts have possible mixed origin.

The Mid-Eneolithic Mikhailovka extracts are very different from the two forest-steppe sites. Figure 5c displays  $n = 32$  residues with  $\Delta^{13}\text{C}$  values characteristic of ruminant adipose products, of which seven display  $\Delta^{13}\text{C}$  values characteristic of ruminant dairy products. Equine products were present in one residue; one displayed a mixed origin.

$\Delta^{13}\text{C}$  values derived from potsherds dated to the Late-Eneolithic and Early Bronze Age steppe sites of Mikhailovka II, III, Nizhniy Rogachik and Generalka sites are shown in Figure 6. This comparison offers a new subsistence/diet reconstruction of the people steppe through time. Examination of Figure 6a reveals that the majority of Mikhailovka II residues ( $n = 11$ ) exhibit  $\Delta^{13}\text{C}$  values characteristic of ruminant adipose products, of which two residues have a dairy fat origin. Seven residues exhibit  $\Delta^{13}\text{C}$  values characteristic of equine products and only one extract might have a freshwater fish oil origin.

Figure 6b reveals that the majority of Nizhniy Rogachik residues ( $n = 14$ ) exhibit  $\Delta^{13}\text{C}$  values characteristic

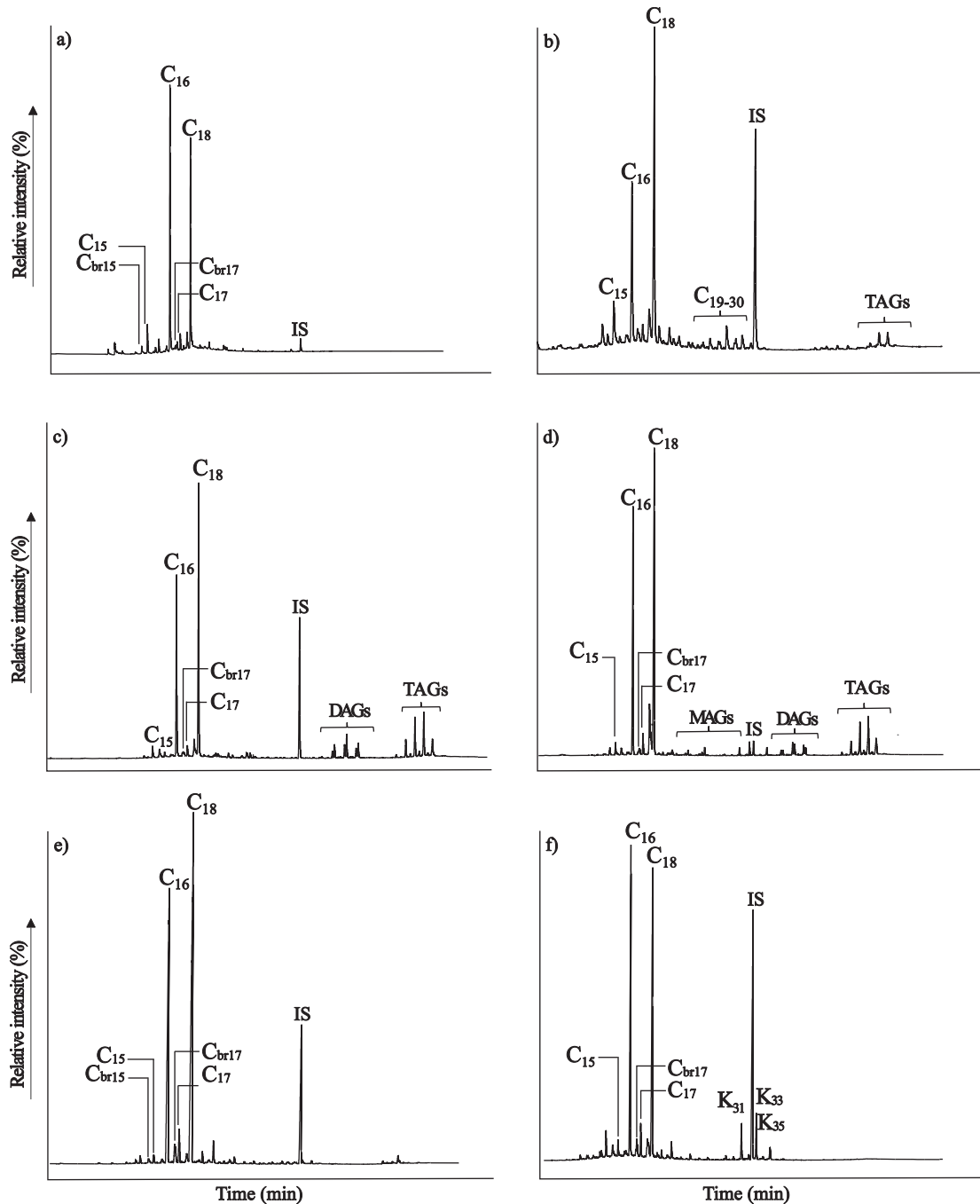
of ruminant adipose products, of which five residues have a dairy fat origin. Six residues exhibit  $\Delta^{13}\text{C}$  values characteristic of equine products, while only two extracts exhibit values consistent with a freshwater fish origin. The remaining extract appears to have a mixed origin.

Examination of Figures 6c reveals that the majority of Mikhailovka III extracts ( $n = 11$ ) exhibit  $\Delta^{13}\text{C}$  values characteristic of ruminant adipose products, of which four residues have a dairy fat origin. Two residues exhibit  $\Delta^{13}\text{C}$  values characteristic of equine products and only one extract might have a freshwater fish oil origin. Finally, based on the mixed plots (in the Appendix) the remaining two residues (white dots) have possible mixed origin.

Finally, examination of Figure 6d reveals the majority of Generalka extracts ( $n = 18$ ) exhibit  $\Delta^{13}\text{C}$  values characteristic of ruminant adipose products, of which one residue has a dairy fat origin and four residues might have a weak dairy fat contribution ( $\Delta^{13}\text{C} = -2.6\text{‰}$ ). Seven residues exhibit  $\Delta^{13}\text{C}$  values characteristic of equine products, and only two extracts might have a freshwater fish oil origin.

It is worth noting the peculiar enrichment in  $\delta^{13}\text{C}_{16:0}$  values in some residues possibly suggesting increasing  $\text{C}_4$  plants in the ecosystem or operation of another enrichment phenomenon. The latter is associated with the residues of ruminant origin and specifically with a ruminant dairy origin, and it is more evident at the steppe sites (Figure 5, c and Figure 6). The increase might be related to a seasonal effect and





**Figure 4.** Partial gas chromatograms of total lipid extracts from pottery from: (a) Dereivka; (b) Molyukhov-Bugor; (c) Mikhailovka I; (d) Nizhniy-Rogachik; (e) Generalka; and (f) Mikhailovka III. Abbreviations: fatty acids (C);  $C_N$ , fatty acids with N carbon atoms; K, mid-chain ketones with 31, 33 and 35 carbon atoms; MAGs, monoacylglycerols; DAGs, diacylglycerols; TAGs, triacylglycerols; and IS, internal standard (*n*-tetratriacontane). Sample reference numbers: a, DER16; b, MB17; c, MIK68; d, NR20; e, GEN13; f, MIK14.

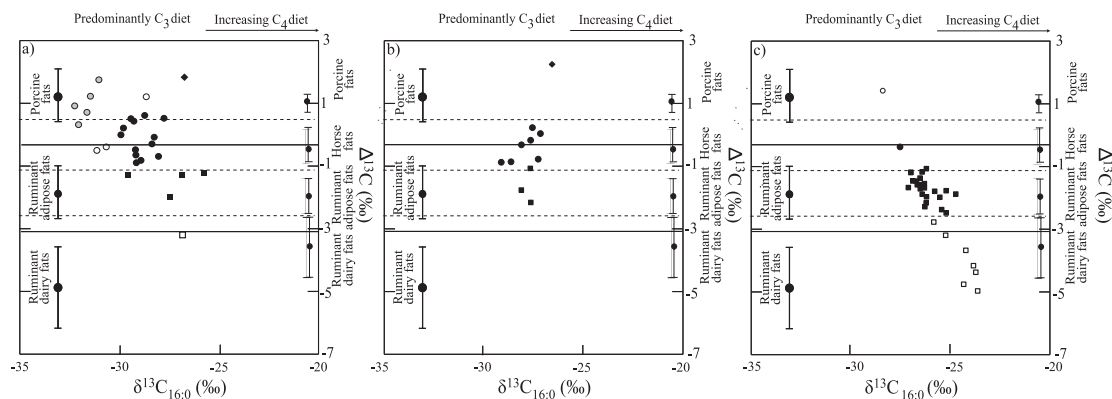
it might suggest that the ruminants exploited in the steppe were fed with  $C_3$  plants but with some isotopically heavier, possibly  $C_4$  plants, input especially during the summer as they usually give birth in spring so the production of milk is strongly connected to summer. However, the enrichment can also be explained by greater summer aridity, so it might derive from water-stressed  $C_3$  plants (Evershed et al. 2008). Finally, seasonal pastoralism can also be hypothesised as the populations of the North-Pontic steppe are believed to practise it (Rassamakin 1999). However, considering the significance of this topic, this phenomenon will

need to be addressed in a future paper, taking into account other climatic and environmental evidence.

## 6. Comparing faunal and organic residue evidence

### 6.1. Contemporaneous sites from different environments

Overall, the subsistence economy of the Dereivka community was based on horse exploitation as equine products prevailed in 48% of the extracts (Mileto et al.



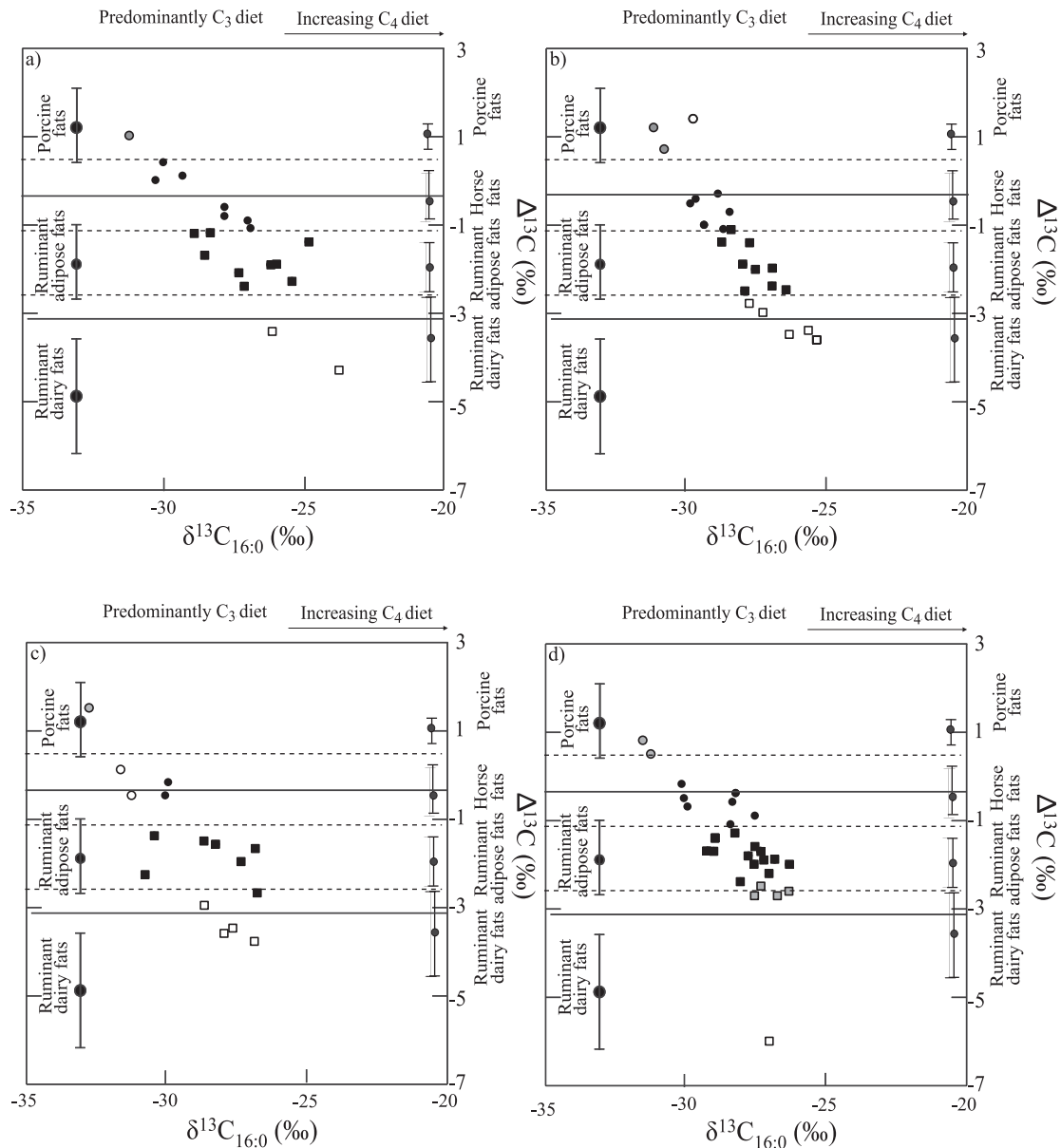
**Figure 5.** Scatterplots of  $\delta^{13}\text{C}$  values of  $\text{C}_{16:0}$  fatty acid against the  $\Delta^{13}\text{C}$  values ( $\delta^{13}\text{C}_{18:0} - \delta^{13}\text{C}_{16:0}$ ) extracted from pottery vessels from (a) Dereivka, (b) Molyukhov-Bugor and (c) Mikhailovka. In the figure: equine fats (dots); ruminant adipose fats (filled squares); ruminant dairy fats (empty squares); freshwater fish oil fats (grey dots); non-ruminant (porcine?) fats (rhombus) and mixed fats (empty dots). The template plot was created using the modern fats collected from animals raised in Britain; France; Kazakhstan; Switzerland; Turkey; Kenya and Libya (Copley et al. 2003; Spangenberg, Jacomet, and Schibler 2006; Stear 2008; Gregg et al. 2009; Outram et al. 2009; Dunne et al. 2012; Salque 2012; Salque et al. 2013). The  $\delta^{13}\text{C}$  values obtained for the modern reference fats were adjusted for post-Industrial Revolution effects of fossil fuel burning by the addition of 1.2‰ (Friedli et al. 1986). Analytical precision is  $\pm 0.3\text{‰}$  (Adapted from Stear 2008; Salque 2012).

2017). The latter result reflects the faunal assemblage (Figure 7), of which horses dominated (60% NISP). Additionally, according to the faunal records, ruminant hunting was a widely practiced activity, as deer and elk comprised 75% the total wild animal assemblage (Kaiser 2010); domesticated ruminants (mainly cattle; 15%) were also exploited. Ruminant products exploitation is confirmed by the carbon isotope results, which revealed that 19% of the investigated pots were used to process ruminant fats. Finally, fishing was practiced as evidenced by both faunal records (3% NISP) and the carbon isotope results (18% of the total extracts have a freshwater fish origin). However, the detection of  $\text{C}_{20}$  and  $\text{C}_{22}$  APAAs as biomarkers for unsaturated fats, would have further confirmed the processing of aquatic resources in pots (Cramp et al. 2014). Nevertheless, the latter suggestion is also supported by the other researches (e.g. Lillie, Budd, and Potekhina 2011) From these data it appears that Dereivka subsistence economy was mainly based on horse exploitation associated with complementary activities including ruminant hunting, fishing and cattle breeding. However, it was not possible to infer from these data whether the horses were wild or domesticated (Outram et al. 2009; Mileto et al. 2017).

The subsistence economy of the neighbouring site of Molyukhov Bugor was more challenging to reconstruct. Interestingly, the compound-specific stable carbon values of the fatty acids in the pottery from Molyukhov Bugor were dominated by equine products (67%); however, the faunal records revealed a lower percentage of equine bones (14%). The latter mismatch can be explained as follows: (i) the mixture of materials due to the peculiar type of soil (*Chernozem*) might have altered the faunal assemblage, or (ii) equine products were preferentially processed in vessels while other

animal products were processed in other ways (e.g. using a spit over an open fire). According to the faunal records hunting was a widespread activity as the 37% of the faunal assemblage comprised wild animals. In addition, the 44% were attributed to domesticated ruminants (including cattle, sheep and goats) suggesting that ruminant breeding was a significant complementary practice, also supported by the fatty acid carbon isotope values that suggest 25% of the lipid residues in pottery to have a ruminant origin.

A completely different economic pattern is suggested by the distribution of carbon isotope values of Mikhailovka I pottery extracts, where the majority of the Mikhailovka I vessels (94%) were used to process ruminant products, of which the 21% were used for the processing of ruminant dairy products. The latter result is unsurprising considering that ca. 90% of the faunal assemblage comprised ruminant domesticates, including: cattle, sheep and goats (Telegin 1986: 88 ref. Bibikova & Shevchenko 1962). As a result, considering both faunal and carbon isotope results, it appears that the inhabitants of the Mikhailovka I settlement were ruminant breeders, mainly specializing in sheep and goat herding (65% of the fauna records comprised small ruminants) and with a sophisticated knowledge of domestication as secondary products were clearly exploited. The equine bones comprised a very small proportion (2%) of the assemblage, which is reflected in the fats recovered from the pottery (3%). Significantly, these data revealed that the economic strategies of the three Mid-Eneolithic sites were autonomous, following the specific needs of the community and, more likely, the resources offered by the local environments. In summary, according to the existing faunal records (Kaiser 2010) and the lipid residue evidence, during the Mid-Eneolithic the forest-steppe people were



**Figure 6.** Scatterplots of  $\delta^{13}\text{C}$  values of  $\text{C}_{16:0}$  fatty acid against the  $\Delta^{13}\text{C}$  values ( $\delta^{13}\text{C}_{18:0} - \delta^{13}\text{C}_{16:0}$ ) extracted from pottery vessels from (a) Mikhailovkall, (b) Nizhniy-Rogachik, (c) Mikhailovkall and (d) Generalka. In the figure: equine fats (dots); ruminant-adipose fats (filled squares); ruminant-dairy fats (empty squares); freshwater-fish oil (grey dots) and mixed fats (empty dots). For the details concerning the template plot see the capture of Figure 5.

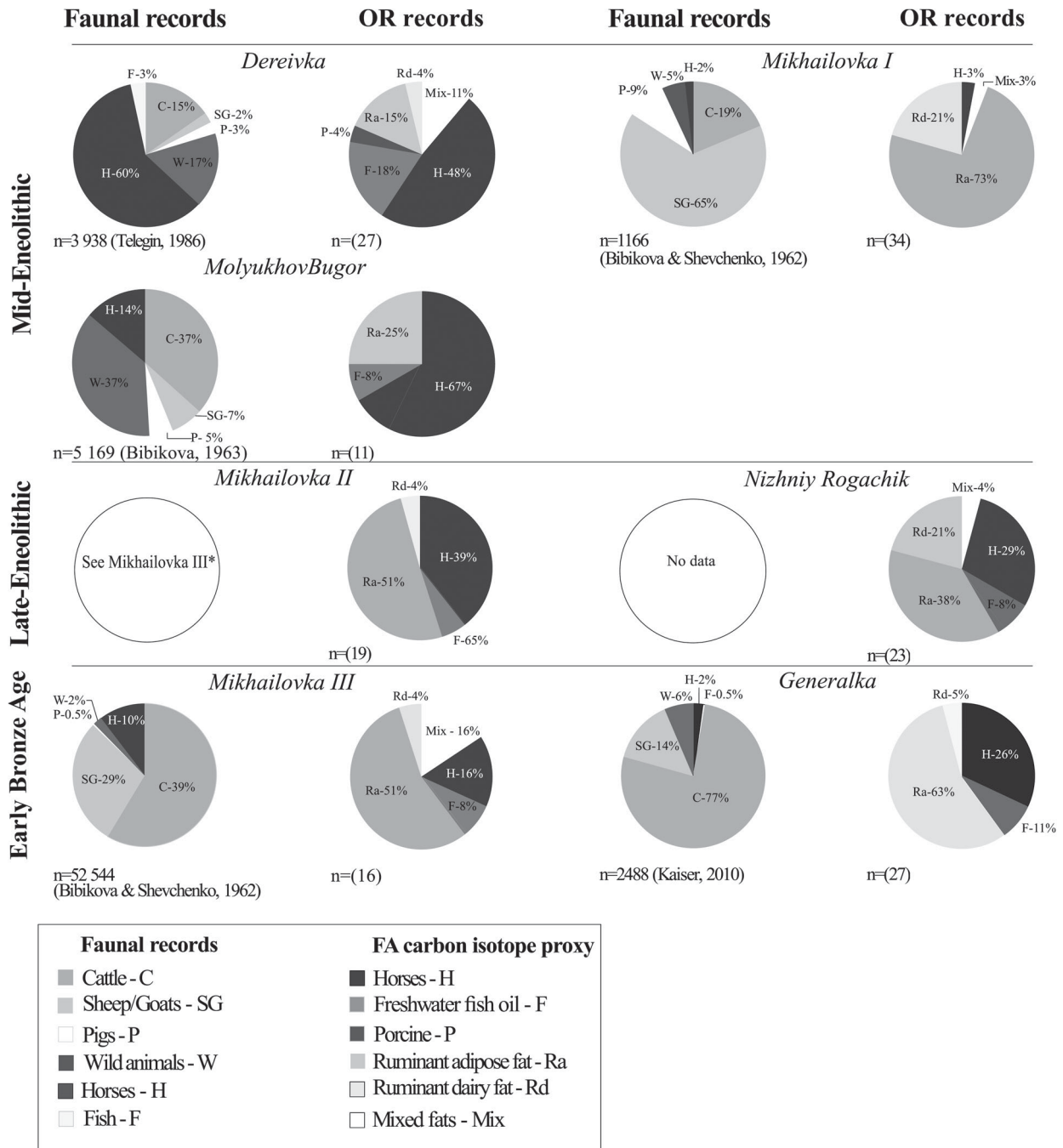
probably not pastoralists, while, in contrast, the steppe people of Mikhailovka appear to have adopted a full pastoral economy.

## 6.2. Subsistence economy in the steppe sites from the 4<sup>th</sup> to the 3<sup>rd</sup> millennium BC

The information obtained from existing archaeozoological records and the new molecular and stable isotope analyses reveal that the steppe dietary habits of Eneolithic and Early Bronze Age communities were ruminant-based. Interestingly, the great majority of the pottery vessels recovered from the steppe sites were used for the processing of ruminant carcass and dairy products, reflecting the faunal records (Figure 7), which are dominated by domesticated cattle, sheep

and goats (Kaiser 2010). However, Generalka slightly departs from this trend producing only tentative evidence for dairying. Interestingly, the predominance of cows over bulls in Generalka faunal record and the high number of bones attributed to animals in the 36–48 months slaughter age range (internal report by Tuboltsev), suggests an economy mainly based on meat and dairy production, possibly indicating that the selection of the ceramic fragments may have biased interpretations.

Furthermore, based on compound-specific carbon isotope analysis of fatty acids, the non-ruminant residues recovered from the steppe potsherds, were possibly attributed to: (i) freshwater fish oils, suggesting that the steppe populations also practised fishing as a secondary activity, and (ii) mixing of commodities



**Figure 7.** Comparison of faunal and organic residues records (OR records). Pie charts of the percentage of bone finds recognized as being horses, cattle, sheep/goats, pigs, wild animals and fish are illustrated adjacent to pie charts of the percentage of animal-fat-containing extracts from each of the sites (i.e. sherds containing plant lipids are not included, nor are sherds that did not yield any lipid). Total number of bone finds and lipid extracts are given at the base of the pie charts. Abbreviations: Horses (H); Freshwater fish oil (F); Ruminant adipose (Ra); Ruminant dairy (Rd); Porcine/Pigs (P); Wild animals (W); Cattle (C); Sheep and Goat (SG).

was also observed suggesting non-specialised use of vessels. However, despite the attempt to identify biomarkers for fish including the  $C_{20}$  and  $C_{22}$  APAAAs as biomarkers for unsaturated fats, the absence of these biomarkers in the extracts, do not allow confirmation of the presence of freshwater fish oil. Generally, the exploitation of horses appears to be secondary, but appreciable especially in Nizhniy Rogachik, Generalka and Mikhailovka III communities.

Significantly, these data revealed that the economic strategies of the communities lived in the steppe were

similar and based on extensive pastoralism of ruminants and exploitation of secondary products confirming that from the Mid-Eneolithic onward (Mikhailovka I site, discussed in the previous section) the steppe people possessed a sophisticated knowledge of animal domestication. Furthermore, the lipid residue findings did not reveal significant changes in the type of animal products recovered from pots. The main transformation relates the faunal records that revealed an increasing percentage of cattle bones in the later sites (Figure 3), which might suggest a transition from a

highly mobile pastoral economy to a more sedentary one, as cattle are usually more exploited by settled communities (Kuzmina 2003, 208; Renfrew 2002, 2). However, this contradicts suggestions of an increasing nomadic pastoralist economy from the 3<sup>rd</sup> millennium BC onward (Anthony 2007). Since, the results presented herein cannot provide a definitive answer to the latter question, resolution will have to await future investigations.

## 7. Conclusions

This research provided significant new insights into the communities lived in the North-Pontic region during the transitional periods of the Eneolithic and the Early Bronze Age. The main findings are that:

- (1) There was a considerable variation of animal exploitation in the forest-steppe sites compared to the steppe sites, confirming the results of previous researches (Outram et al. 2012; Lillie, Budd, and Potekhina 2011).
- (2) Despite the complications (i.e. peculiar soil and mixed archaeological layers), the zooarchaeological analyses are largely consistent with the lipid residue findings.
- (3) The lipid residues revealed that ruminant dairy products were exploited by the communities of the steppe from the Mid-Eneolithic period (Mikhailovka site). This suggests that these communities were pastoralists possessing a sophisticated knowledge of animal domestication. According to the zooarchaeological record for this site, animal husbandry became the primary subsistence strategy in the 4<sup>th</sup> millennium BC. At first, the livestock consisted mainly of sheep and goats, with a shift to cattle only detected with appearance of the Yamnaya culture (3100 BC onwards).
- (4) The forest-steppe appears to have been populated by hunters-fishers as the two investigated sites (Molyukhov-Bugor and Dereivka) displayed a predominance of wild animals, fish and horse remains (Rassamakin 1999; Lillie, Budd, and Potekhina 2011).
- (5) The Molyukhov-Bugor site revealed a higher percentage of cattle bones and lipid residues of ruminant origin, suggesting that dietary habits were more varied compared to Dereivka, further suggesting that specialised substance practices can exist between sites even within the same, or similar, region. The latter dietary difference can be explained by a possible greater influence of the Tripolye culture to the closer Molyukhov-Bugor community, a suggestion also supported by the greater number of Tripolye imports

discovered in Molyukhov-Bugor in comparison to Dereivka.

- (6) Significant exploitation of horses was confirmed in the region. The lipid residues revealed that the two Mid-Eneolithic forest-steppe communities exploited horses extensively. The steppe communities also exploited horses but to a much lesser degree.
- (7) Finally, a curious enrichment in  $\delta^{13}\text{C}_{16:0}$  values toward heavier carbon isotope values (increasing  $\text{C}_4$  plants?) was detected, especially associated with the residues with a ruminant dairy fat origin. The latter might be related to a seasonal effect and/or to greater summer aridity (Evershed et al. 2008) and/or seasonal pastoralism (Rassamakin 1999).

In conclusion, this research is the first interdisciplinary investigation of diet and subsistence strategies of the human groups that lived in the North-Pontic region during the Eneolithic and Early Bronze Age. Significantly, the application of compound-specific carbon isotope analysis of organic residues extracted from prehistoric pots, associated with existing archaeological evidence, has demonstrated that studies applied in the prehistoric North-Pontic region must consider the regional environmental variation as each subsistence economy was highly influenced by the specific local environment.

## Acknowledgment

This work was supported within an agreement between the Freie Universität Berlin and Bristol University, framework 'Cluster of Excellence 264 TOPOI' (FU Berlin, research group AII). We would like to thank the NERC Life Sciences Mass-Spectrometry Facility and the Electron-Microscopy Unit from the School of Chemistry (University of Bristol) for instrument use. RPE would like to acknowledge the ERC Advanced Grant NeoMilk (FP7-IDEAS-ERC/324202).

## Disclosure Statement

No potential conflict of interest was reported by the author(s).

## Notes on contributors

*Simona Mileto* completed her Bachelor and Master degrees in Science and Technology for the Conservation and the Restoration of the Cultural Heritages from the University of Perugia, Italy. She has recently completed a Ph.D. submitted to Department of History and Cultural Studies of the Freie Universität Berlin and in cooperation with the University of Bristol under the supervision of Professor Elke Kaiser and Professor Richard Evershed. The overall aim of her Ph.D. was to investigate subsistence practises of populations lived in the North-Pontic region during the Eneolithic and Early Bronze Age, by applying organic residues analysis and stable isotope proxies. At the present, she is working at the Equip

de Recerca Arqueològica i Arqueomètrica by the Universitat de Barcelona (ERAAUB).

**Dr. Elke Kaiser** is specialized in the archaeology of the Eastern European steppe. After her doctorate in 1999 she went for a research stay in Kiev, Ukraine, supported by the Alexander von Humboldt-Foundation. She held several positions at the Freie Universität Berlin and was the leader of a group of junior researchers at the Excellencecluster 264 Topoi from 2008 to 2012. In 2014 she was appointed Professor for Prehistoric Archaeology at the Freie Universität Berlin. Her research focus on bio-, settlement and landscape archaeology.

**Dr. Juri Rassamakin** is an archaeologist specialised in the Copper and Early Bronze Age. He has worked in different positions at the Institute of Archaeology of Ukrainian National Academy of Sciences since 1974. Rassamakin was a fellow at the Alexander von Humboldt-Stiftung in Berlin; he has also been a Fulbright Visiting Scholar to the University of Pennsylvania and is Corresponding Member of the Deutsches Archäologisches Institut. The author of “Die nordpontische Steppe in der Kupferzeit” (Berlin, 2004) and co-author “Late Prehistoric Exploitation of the Eurasian Steppe” (Cambridge 1999).

**Dr. Helen Whelton** completed her undergraduate degree in Forensic Science from the University of Kent and has 5 years' experience as an analytical chemist working in both industry and research. She has recently completed a Ph.D. in chemistry at the University of Bristol under the supervision of Professor Richard Evershed. The overall aim of her Ph.D. was to apply an extensive range of stable isotope proxies to investigate the Neolithic in northern Greece, providing new insights into the relationship between human mobility, livestock management, and diet and subsistence practices.

**Prof. Dr. Richard P. Evershed** graduated from Trent Polytechnic, Nottingham, in 1978 with a BSc in Applied Chemistry, and then undertook a PhD in the Department of Chemistry, University of Keele, under the supervision of Professor David Morgan, investigating pheromones in social insects. In 1981, he was appointed to a postdoctoral research position in the Organic Geochemistry Unit, School of Chemistry, University of Bristol, where he worked with Professors Geoffrey Eglinton and James Maxwell, developing GC/MS and HPLC methods for investigating porphyrins in crude oils and source rocks. In 1984 he moved to the Department of Biochemistry, University of Liverpool, to manage a biochemical mass spectrometry unit. In 1993 he was appointed to a Lectureship in School of Chemistry, University of Bristol, promoted to Reader, 1996, and awarded Chair of Biogeochemistry in 2000. He is currently Director of Bristol Biogeochemistry Research Centre and the Bristol node of the NERC Life Sciences Mass Spectrometry Facility and a member of the NERC Peer Review College.

## ORCID

Yuri Rassamakin  <http://orcid.org/0000-0001-8263-0193>

## References

Allentoft, Morten E, Martin Sikora, Karl-Göran Sjögren, Simon Rasmussen, Morten Rasmussen, Jesper Stenderup, Peter B Damgaard, Hannes Schroeder, Torbjörn Ahlström, and Lasse Vinner. 2015.

“Population Genomics of Bronze Age Eurasia.” *Nature* 522 (7555). Nature Research: 167–72.

Anthony, David W. 2007. *The Horse, the Wheel, and Language. How Bronze-Age Riders from the Eurasian Steppes Shaped the Modern World.* doi:10.1086/268620.

Anthony, David W, and D R Brown. 2003. “Eneolithic Horse Rituals and Riding in the Steppes: New Evidence.” *Prehistoric Steppe Adaptation and the Horse.* McDonald Institute for Archaeological Research Cambridge, 55–68.

Bendrey, Robin. 2011. “Some like It Hot: Environmental Determinism and the Pastoral Economies of the Later Prehistoric Eurasian Steppe.” *Pastoralism: Research, Policy and Practice* 1 (1). Springer Berlin Heidelberg: 1. doi:10.1186/2041-7136-1-8.

Bibikova, V I. 1963. “Iz Istorii Izuchenija Golocenovoj Fauny Pozvonochnyh v Vostochnoj Evrope [From the History of the Study of Holocene Vertebrate Fauna in the Eastern Europe].” *Prirodnaja Obstanovka I Fauny Proshlogo* 1: 119–46.

Boyle, Katherine V, Colin Renfrew, and Marsha Ann Levine. 2002. “Ancient Interactions: East and West in Eurasia.” *McDonald Institute Monographs*, xii + 344. doi:10.2307/3250913.

Bunyatyan, Kateryna P. 2003. “Correlations between Agriculture and Pastoralism in the Northern Pontic Steppe Area during the Bronze Age.” *Prehistoric Steppe Adaptation and the Horse*, 269–86.

Charters, S, R P Evershed, L J Goad, A Leyden, P W Blinkhorn, and V Denham. 1993. “Quantification and Distribution of Lipid in Archaeological Ceramics: Implications for Sampling Potsherds for Organic Residue Analysis and the Classification of Vessel Use.” *Archaeometry* 35 (2). Wiley Online Library: 211–23.

Christie, William W. 1978. “The Composition, Structure and Function of Lipids in the Tissues of Ruminant Animals.” *Progress in Lipid Research* 17 (2). Elsevier: 111–205.

Christie, W W. 2012. “Fatty Acids: Branched-Chain Structures, Occurrence and Biosynthesis.” *The Lipid Library*.

Copley, M S, R Berstan, S N Dudd, G Docherty, A J Mukherjee, V Straker, S Payne, and Richard P Evershed. 2003. “Direct Chemical Evidence for Widespread Dairying in Prehistoric Britain.” *Proceedings of the National Academy of Sciences* 100 (4). National Acad Sciences: 1524–29.

Cramp, Lucy J E, Jennifer Jones, Alison Sheridan, Jessica Smyth, Helen Whelton, Jacqui Mulville, Niall Sharples, and R P Evershed. 2014. “Immediate Replacement of Fishing with Dairying by the Earliest Farmers of the Northeast Atlantic Archipelagos.” *Proceedings of the Royal Society of London B: Biological Sciences* 281 (1780). The Royal Society: 20132372.

Dudd, Stephanie N, and Richard P Evershed. 1998. “Direct Demonstration of Milk as an Element of Archaeological Economies.” *Science* 282 (5393). American Association for the Advancement of Science: 1478–81. doi:10.1126/science.282.5393.1478.

Dunne, J, Richard P Evershed, M Salque, L Cramp, S Bruni, K Ryan, S Biagetti, and S di Lernia. 2012. “First Dairying in Green Saharan Africa in the Fifth Millennium BC.” *Nature* 486 (7403): 390–94. doi:10.1038/nature11186.

Evershed, Richard P, Stephanie N Dudd, Mark S Copley, Robert Berstan, Andrew W Stott, Hazel Mottram, Stephen A Buckley, and Zoe O E Crossman. 2002. “Chemistry of Archaeological Animal Fats.” *Accounts of Chemical Research* 35 (8). ACS Publications: 660–68.

- Evershed, Richard P, L John Goad, Carl Heron, and L John Goad. 1990. "Analysis of Organic Residues of Archaeological Origin by High-Temperature Gas Chromatography and Gas Chromatography-Mass Spectrometry." *The Analyst* 115 (OCTOBER): 1339–42.
- Evershed, Richard P, C Heron, and L J Goad. 1991. "Epicuticular Wax Components Preserved in Potsherds as Chemical Indicators of Leafy Vegetables in Ancient Diets." *Antiquity* 65 (248). J. Bellows.: 540.
- Evershed, Richard P, S Payne, A G Sherratt, M S Copley, J Coolidge, D Urem-Kotsu, K Kotsakis, et al. 2008. "Earliest Date for Milk Use in the Near East and Southeastern Europe Linked to Cattle Herding." *Nature* 455 (7212). Nature Publishing Group: 528–31. doi:10.1038/nature07180.
- Evershed, Richard P, Andrew W Stott, Anthony Raven, Stephanie N Dudd, Stephanie Charters, and Ann Leyden. 1995. "Formation of Long-Chain Ketones in Ancient Pottery Vessels by Pyrolysis of Acyl Lipids." *Tetrahedron Letters* 36 (48). Elsevier: 8875–78.
- Friedli, H, H Lötscher, Hj Oeschger, U Siegenthaler, and B Stauffer. 1986. "Ice Core Record of the C-13/C-12 Ratio of Atmospheric CO<sub>2</sub> in the Past Two Centuries." *Nature* 324: 237.
- Gregg, M W, E B Banning, K Gibbs, and G F Slater. 2009. "Subsistence Practices and Pottery Use in Neolithic Jordan: Molecular and Isotopic Evidence." *Journal of Archaeological Science* 36 (4). Elsevier: 937–46.
- Haak, Wolfgang, Iosif Lazaridis, Nick Patterson, Nadin Rohland, Swapan Mallick, Bastien Llamas, Guido Brandt, Susanne Nordenfelt, Eadaoin Harney, and Kristin Stewardson. 2015. "Massive Migration from the Steppe Was a Source for Indo-European Languages in Europe." *Nature* 522 (7555). Nature Research: 207–11.
- Harrison, Richard, and Volker Heyd. 2007. "The Transformation of Europe in the Third Millennium BC: The Example of 'Le Petit-Chasseur I + II' (Sion, Valais, Switzerland)." *Prähistorische Zeitschrift* 82: 129–214.
- Heyd, V. 2016. "Das Zeitalter Der Ideologien (The Age of Ideologies): Migration, Interaktion & Expansion Im Prähistorischen Europa Des 4. & 3. Jahrtausends v.Chr." In *Transitional Landscapes? The 3rd Millennium BC in Europe*, edited by R. Großmann, M. Szmyt & M. Furholt, UPA 292, 54–85. Bonn: Habelt.
- Hintz, H F, and N F Cymbaluk. 1994. "Nutrition of the Horse. Annual Review of Nutrition."
- Hubbard, A W, and W D Pocklington. 1968. "Distribution of Fatty Acids in Lipids as an Aid to the Identification of Animal Tissues. I.—Bovine, Porcine, Ovine and Some Avian Species." *Journal of the Science of Food and Agriculture* 19 (10). Wiley Online Library: 571–77.
- Kaiser, Elke. 2010. "Der Übergang Zur Rinderzucht Im Nördlichen Schwarzmeerraum." *Godišnjak Centar Za Balkanološka Ispitivanja* 39, 23–34.
- Kaiser, Elke. 2017. "Migrationen von Ost Nach West. Die Archäologie von Wanderungsbewegungen Im 3. Jahrtausend v. Chr." *Mitteilungen Der Berliner Gesellschaft Für Anthropologie, Ethnologie Und Urgeschichte* 37: 31–44.
- Kaiser, Elke n.d. "Das Dritte Jahrtausend v. Chr. in Der Osteuropäischen Steppe." *Topoi Berlin Studies of the Ancient World. Berlin.*
- Kotova, Nadezhda S. 2003. *Neolithization in Ukraine*. Vol. 1109. British Archaeological Reports Ltd.
- Kotova, Nadezhda S. 2008. *Early Eneolithic in the Pontic Steppes*. Vol. 1735. British Archaeological Reports Limited.
- Kotova, Nadezhda S, and S Makhortykh. 2010. "Human Adaptation to Past Climate Changes in the Northern Pontic Steppe." *Quaternary International* 220 (1). Elsevier: 88–94.
- Kotova, Nadezhda S, and L A Spitsyna. 2003. "Radiocarbon Chronology of The "Middle" Layer of the Mikhaivka Settlement." Uniwersytet im. Adama Mickiewicza (Poznań). Instytut Prahistorii, Uniwersytet im. Adama Mickiewicza (Poznań). Instytut Wschodni.
- Kotova, Nadezhda S, and V. Y. Videiko. 2003. "The Absolute Chronology of the Ukraine during the Eneolithic." In Hänsel, B. & Studeniková, E. (Eds.), *Zwischen Karpaten Und Ägäis. Neolithikum Und Ältere Bronzezeit. Gedenkschrift Für Viera Němejcová-Pavúková. Internationale Archäologie: Studia Honoraria 21. Leidorf, Rahden/Westf.*, 121–134.
- Kremenetski, Constantin V. 2003. "Steppe and Forest-Steppe Belt of Eurasia: Holocene Environmental History." *Prehistoric Steppe Adaptation and the Horse*, 11–28.
- Kristiansen, Kristian. 2014. "Towards a New Paradigm." *The Third Science Revolution and Its Possible Consequences in Archaeology, Current Swedish Archaeology* 22: 11–34.
- Kuzmina, Elena E. 2003. "Origins of Pastoralism in the Eurasian Steppes." *Prehistoric Steppe Adaptation and the Horse* 203. McDonald Institute Monographs, Cambridge, UK.
- Levine, Marsha Ann. 1990. "Dereivka and the Problem of Horse Domestication." *Antiquity* 64: 727–40.
- Levine, Marsha Ann, Colin Renfrew, and Katherine V Boyle. 2003. *Prehistoric Steppe Adaptation and the Horse*. McDonald Inst of Archeological.
- Lillie, Malcolm. 1998. "The Mesolithic-Neolithic Transition in Ukraine: New Radiocarbon Determinations for the Cemeteries of the Dnieper Rapids Region." *Antiquity* 72 (275). Cambridge Univ Press: 184–88.
- Lillie, Malcolm. 2003. "Tasting the Forbidden Fruit: Gender Based Dietary Differences among Prehistoric Hunter-Gatherers of Eastern Europe." *Before Farming* 2003 (2). Liverpool University Press: 1–16.
- Lillie, Malcolm, Chelsea Budd, and Inna Potekhina. 2011. "Stable Isotope Analysis of Prehistoric Populations from the Cemeteries of the Middle and Lower Dnieper Basin, Ukraine." *Journal of Archaeological Science* 38 (1). Elsevier: 57–68. doi:10.1016/j.jas.2010.08.010.
- Lillie, Malcolm, and Kenneth Jacobs. 2006. "Stable Isotope Analysis of 14 Individuals from the Mesolithic Cemetery of Vasilyevka II, Dnieper Rapids Region, Ukraine." *Journal of Archaeological Science* 33 (6). Elsevier: 880–86.
- Merpert, N Ya. 1974. "Drevneishie Skotovody Volzhsko-Uralskogo Mezhdurechya." *Moskva: Nauka*.
- Mileto, S, E Kaiser, Y Rassamakin, and Richard P Evershed. 2017. "New Insights into the Subsistence Economy of the Eneolithic Dereivka Culture of the Ukrainian North-Pontic Region through Lipid Residues Analysis of Pottery Vessels." *Journal of Archaeological Science: Reports* 13. Elsevier Ltd: 67–74. doi:10.1016/j.jasrep.2017.03.028.
- Mottram, Hazel R, Stephanie N Dudd, G J Lawrence, Andrew W Stott, and Richard P Evershed. 1999. "New Chromatographic, Mass Spectrometric and Stable Isotope Approaches to the Classification of Degraded Animal Fats Preserved in Archaeological Pottery." *Journal of Chromatography A* 833 (2). Elsevier: 209–21.
- Mukherjee, Anna J, Robert Berstan, Mark S Copley, Alex M Gibson, and Richard P Evershed. 2007. "Compound-Specific Stable Carbon Isotopic Detection of Pig Product

- Processing in British Late Neolithic Pottery.” *Antiquity* 81 (313). Cambridge Univ Press: 743–54.
- Neradenko T.M. 2013. “Taiemnytsi Moliukhova Bugra. Cherkasy: FOP Chabanenko Iu.A.”
- Outram, Alan K, Alexei Kasparov, Natalie A Stear, Victor Varfolomeev, Emma Usmanova, and Richard P Evershed. 2012. “Patterns of Pastoralism in Later Bronze Age Kazakhstan: New Evidence from Faunal and Lipid Residue Analyses.” *Journal of Archaeological Science* 39 (7). Elsevier: 2424–35. doi:10.1016/j.jas.2012.02.009.
- Outram, Alan K, Natalie A Stear, Robin Bendrey, Sandra Olsen, Alexei Kasparov, Victor Zaibert, Nick Thorpe, and Richard P Evershed. 2009. “The Earliest Horse Harnessing and Milking.” *Science* 323 (5919): 1332–35. doi:10.1126/science.1168594.
- Pond, Wilson G, David C Church, and Kevin R Pond. 1995. *Basic Animal Nutrition and Feeding*. John Wiley and Sons.
- Rassamakin, Yuri. 1999. “The Eneolithic of the Black Sea Steppe: Dynamics of Cultural and Economic Development 4500–2300 BC.” *Late Prehistoric Exploitation of the Eurasian Steppe*, McDonald Inst of Archeological, 59–182.
- Rassamakin, Yuri, and Elke Kaiser. n.d. “Dereivka I Eneoliticheskie Poseleniya S Keramikoi Dereivskogo Typa: Problem Absolyutnoi Khronologii (in Russian). Dereivka Und Äneolithische Siedlungen Mit Keramik Des Dereivka-Typs: Probleme Der Absoluten Chronologie (in German).” In *Der Kaukasus Im Spannungsfeld Zwischen Osteuropa Und Vorderem Orient: Dialog Der Kulturen, Kultur Des Dialoges*, edited by S. Reinhold & M. Kashuba.
- Renfrew, Colin. 2002. “Pastoralism and Interaction: Some Introductory Questions.” *Ancient Interactions: East and West in Eurasia*. McDonald Institute Monographs, Cambridge, UK, 1–10.
- Salque, M. 2012. “Regional and Chronological Trends in Milk Use in Prehistoric Europe Traced through Molecular and Stable Isotope Signatures of Fatty Acyl Lipids Preserved in Pottery Vessels.” University of Bristol.
- Salque, M., P I Bogucki, J Pyzel, I Sobkowiak-Tabaka, R Grygiel, M Szmyt, and Richard P Evershed. 2013. “Earliest Evidence for Cheese Making in the Sixth Millennium BC in Northern Europe.” *Nature* 493 (7433). Nature Publishing Group: 522–25.
- Shaposhnikova, O. G. 1963. “Zvit pro Okhronni Rozkopki, Provedeni Po Vzdovzh Beregiv Kakhovskogo Vodoimyshcha Vlitku 1963 Roku [Report of the Rescue Excavation, Conducted along the Bank of the Water Reservoir Kakhovka in 1963].” Vol. 13.
- Shaposhnikova, O. G. 1972. “Pamiatki Rogachytskogo Typu v Podniprov'yi. Materialy XIII Konferentsii IA AN URSR, Prysviacheni 50-Richchiu AN URSR,,” Kyiv: Naukova dumka;113–115.
- Sherratt, Andrew. 2003. “The Horse and the Wheel: The Dialectics of Change in the Circum-Pontic Region and Adjacent Areas, 4500-1500 BC.” In *Prehistoric Steppe Adaptation and the Horse*, edited by C Renfrew and K Boyle) M Levine, McDonald I, 233–52. Cambridge.
- Spangenberg, Jorge E, Stefanie Jacomet, and Jörg Schibler. 2006. “Chemical Analyses of Organic Residues in Archaeological Pottery from Arbon Bleiche 3, Switzerland—evidence for Dairying in the Late Neolithic.” *Journal of Archaeological Science* 33 (1). Elsevier: 1–13.
- Spitsyna, Larisa A. 2010. “Поселення Нижній Рогачик. Археологія І Давня Історія України, [Nizhnyi Rogachiksettlement. Archaeology and Ancient History of Ukraine].”
- Stear, Natalie Anne. 2008. “Changing Patterns of Animal Exploitation in the Prehistoric Eurasian Steppe: An Integrated Molecular, Stable Isotopic and Archaeological Approach.” University of Bristol.
- Telegin, Dmitriy Yakolevich. 1957. “Otchet Ob Obsledovanii Arkheologicheskikh Pamyatnikov v Zone Razmyva Kachovskogo Vodokhranilishcha v Avguste. [Report on the Investigations of Archaeological Monuments in the Littoral Zone of the Water Reservoir Kachovka in August 1957].” *Scientific Archive of the Institute of Archaeology, National Academy of Ukrainia Sovietrepublic (1957/10a; Ф. Эсн. 2905)*.
- Telegin, Dmitriy Yakolevich. 1986. “Dereivka. A Settlement and Cemetery of Copper Age Horse Keepers on the Middle Dnieper.” *BAR. International Series*, no. 287.
- Tuboltsev, O. V. 2006. “Predvaritelnye Rezultaty Raskopok Ekspeditsii ‘Novaya Arkheologicheskaya Shkola’ Pamyatnika Generalka 2 [Preliminary Results of the Excavation of the Site Generalka 2 by the ‘New School of Archaeology’]. In: *Arkheologichni Pamyatky Khortytsi Ta Ikh Muzeefi*.”
- Walter, H, and S W Breckle. 1977. “Ökologie Der Erde.” 3 *Spezielle Ökologie Der Gemäßigten Und Arktischen Zonen Euro-Nordasiens. Stuttgart*.
- Wechler, Klaus Peter. 2001. *Studien Zum Neolithikum Der Osteuropäischen Steppe*. von Zabern.
- Zhuravlev, O P. 2008. “Tvarynnytstvo Na Myslyvstvo U Trypils'kykh Plemen Na Terytorii Ukrainy.” *IA NANU Kyiv*.
- Zhuravlev, O P, and E V Markova. 2000. “Osteologicheskie Materialy Iz Poseleniia Molyukhov Bugor.” *Arkheologichni Doslidzhennia v Ukraini 1994-1996*. Vol. Kyiv: Prai.