



**TREM2 EXPRESSION IN THE HUMAN BRAIN: A MARKER OF MONOCYTE RECRUITMENT?**

Journal:	<i>Brain Pathology</i>
Manuscript ID	BPA-17-06-RA-091.R2
Wiley - Manuscript type:	Research Article
Date Submitted by the Author:	n/a
Complete List of Authors:	Fahrenhold, Marie; University of Southampton, Clinical and Experimental Sciences / Clinical Neurosciences Rakic, Sonja; University of Southampton, Clinical and Experimental Sciences / Clinical Neurosciences Classey, John; University of Southampton, Clinical and Experimental Sciences / Clinical Neurosciences Brayne, Carol; University of Cambridge, Public Health & Primary Care Ince, Paul; University of Sheffield, Department of Neuroscience Nicoll, James; University of Southampton, Division of Clinical Neurosciences Boche, Delphine; University of Southampton, Clinical and Experimental Sciences / Clinical Neurosciences;
Keywords:	TREM2, human brain, dementia, microglia, monocyte, neuropathology

SCHOLARONE™  
Manuscripts

**TREM2 EXPRESSION IN THE HUMAN BRAIN: A MARKER OF MONOCYTE RECRUITMENT?**

Marie Fahrenhold<sup>1</sup>, Sonja Rakic<sup>1</sup>, John Classey<sup>1</sup>, Carol Brayne<sup>2</sup>, Paul G. Ince<sup>3</sup>, James A. R. Nicoll<sup>1,4</sup>,  
Delphine Boche<sup>1</sup> and MRC CFAS

<sup>1</sup>Clinical Neurosciences, Clinical and Experimental Sciences Academic Unit, Faculty of Medicine, University of Southampton, Southampton SO16 6YD UK.

<sup>2</sup>Cambridge Institute of Public Health, Department of Public Health and Primary Care, University of Cambridge, Cambridge CB1 8RN UK.

<sup>3</sup>Sheffield Institute for Translational Neuroscience, Sheffield University, Sheffield S10 2HQ UK.

<sup>4</sup>Department of Cellular Pathology, University Hospital Southampton NHS Foundation Trust, Southampton, Southampton SO16 6YD UK.

**Corresponding author**

Prof Delphine Boche, Clinical Neurosciences, Clinical and Experimental Sciences Academic Unit, Faculty of Medicine, University of Southampton, Southampton General Hospital, Mailpoint 806, Southampton SO16 6YD, UK.

Phone: +44 (0) 2381 206 107 Email: [d.boche@soton.ac.uk](mailto:d.boche@soton.ac.uk)

**Keywords:** TREM2, human brain, dementia, microglia, monocyte, neuropathology

**Short running title:** TREM2 location in the human brain

Number of words: ~~33292921~~

Number of figures: 3

Number of tables: 3

**Abstract**

Mutation in the triggering receptor expressed on myeloid cells (*TREM*) 2 gene has been identified as a risk factor for several neurodegenerative diseases including Alzheimer's disease (AD). Experimental studies using animal models of AD have highlighted a number of functions associated with TREM2 and its expression by microglial cells. It has therefore been assumed that this is also the case in humans. However, there is very limited information concerning the cellular expression of TREM2 in the human brain. As part of investigations of microglia using *post-mortem* resources provided by the Medical Research Council Cognitive Function and Ageing Studies (MRC-CFAS), we immunostained the cerebral cortex of 299 participants for TREM2 using the Sigma antibody HPA010917 and compared with the macrophage/microglial markers Iba1 and CD68. As expected, Iba1 and CD68 labelled microglia and perivascular macrophages. However, in most cases (284/299), the TREM2 antibody labelled monocytes within vascular lumens, but not microglia or perivascular macrophages. In contrast, in 5 out of 6 cases with acute infarcts, TREM2 immunoreaction identified cells within the brain parenchyma interpreted as recruited monocytes. Six cases with old infarcts contained phagocytic foamy macrophages which were CD68-positive but TREM2 negative. Our observations, using the HPA010917 anti-TREM2 antibody, suggest that TREM2 is not expressed by microglia but instead seems to be a marker of recruited monocytes in the human brain. This finding has implications with regards to the role of TREM2 as a risk factor, emphasizing the importance of systemic immune responses in the development and progression of Alzheimer's disease.

## Introduction

Heterozygous mutation in triggering receptor expressed on myeloid cells (*TREM*) 2 gene has been identified as a risk factor for several neurodegenerative diseases including Alzheimer's disease (AD) (10, 20), amyotrophic lateral sclerosis (5), and Parkinson's disease (24). *TREM2* is a transmembrane receptor of the immunoglobulin family, which associates with the adapter protein DAP12 for signaling. The *TREM2*/DAP12 pathway is involved in the activation of human dendritic cells derived *in vitro* from monocytes (2) and thus *TREM2* is thought to be involved in innate immunity. The importance of *TREM2* in brain function has been illustrated by the autosomal recessive disorder Nasu-Hakola disease (NHD) due to homozygous loss-of-function mutations in the *TREM2* gene (11, 31), in which affected people develop a presenile frontotemporal dementia with sclerosing leukoencephalopathy and polycystic lipomembranous osteodysplasia. Neuropathological features of NHD include demyelination and massive gliosis (41). It was then hypothesized that microglia, as the resident immune cells of the brain, might express *TREM2*. This was confirmed in adult murine microglia with regional variations of *TREM2* expression in the brain (12, 35), and it was suggested that *TREM2* was implicated in the phagocytosis of apoptotic neurons without triggering an inflammatory response (17, 37), an essential function of healthy microglia.

*TREM2* mutation was identified as a significant risk factor for AD with an effect size comparable with that of the  $\epsilon 4$  allele of apolipoprotein E (*APOE*) gene (10, 20), although it is considerably less common. The role of *TREM2* in the brain has been mainly investigated in different mouse models of AD. In APP23 transgenic mice, which carry the human Swedish mutation *APP* KM670/671NL, *TREM2* expression was observed to be associated with the progression of amyloid deposition with microglia clustering around amyloid plaques (8). While in the *APP/PS1* transgenic mice (Swedish and PSEN1 L166P mutations) lacking one copy of the *TREM2* gene, a reduced number of microglia associated with plaques was observed without alteration of the amyloid load (40). Recently it was shown that in the 5XFAD transgenic mice (5 point mutations in the human *APP* and *PSEN1* genes), the function of microglial *TREM2* is to sense lipids promoting microglial survival and clustering around A $\beta$  plaques (42), supporting a protein microarray study that identified the

1  
2  
3 apolipoproteins ApoE and Clusterin/ApoJ as ligands for human TREM2 (43). Despite the  
4  
5 discrepancies in these studies regarding the role of TREM2 in amyloid deposition, possibly due to the  
6  
7 differences in the transgenic mouse models used, the findings are consistent with a direct or indirect  
8  
9 role for TREM2 in myeloid cell migration, proliferation, survival and phagocytosis.

10  
11 In contrast to animal studies, investigation to localise TREM2 expression in the human brain has  
12  
13 been sparse. In a *post-mortem* study involving 11 controls, 11 possible AD and 11 AD cases, the  
14  
15 highest level of TREM2 by Western blot was found in the AD cases followed by the possible AD  
16  
17 cases compared to controls, using the R&D antibody AF1828. By double staining with this antibody  
18  
19 and the microglial marker HLA-DR, they observed TREM2 expressed in some microglia and neurons  
20  
21 (27). A survey of 7 commercial TREM2 antibodies on formalin-fixed paraffin-embedded *post-*  
22  
23 *mortem* brain tissue found only 3 antibodies to bind with human recombinant TREM2 protein on  
24  
25 Western blot, performed to test their specificity. The 2 best TREM2 antibodies were the Sigma  
26  
27 HPA010917 and the R&D AF1828 antibodies (33), also validated using the same methodology by the  
28  
29 companies Sigma ([www.proteinatlas.org](http://www.proteinatlas.org)) and R&D. Therefore, to investigate the localization of  
30  
31 TREM2 in the human brain, we have used the cohort of the Medical Research Council Cognitive  
32  
33 Function and Ageing Study (MRC CFAS) in which we have also studied multiple other microglial  
34  
35 proteins (30). We screened 299 brains unselected from the whole spectrum of cognitive function  
36  
37 found in population samples, including any dementia type and treatment but characterized in terms of  
38  
39 clinical and neuropathological data (3, 34) with the HPA010917 and AF1828 anti-TREM2 antibodies.

#### 40 41 42 43 **Materials and methods**

##### 44 45 *The CFAS cohort*

46  
47 The Medical Research Council Cognitive Function and Ageing Study (MRC CFAS) has been  
48  
49 recruiting individuals living in the community aged 65 years and over since 1990 (3). The main aims  
50  
51 were to estimate the prevalence and incidence of cognitive decline and dementia; to determine the rate  
52  
53 of progression of cognitive decline and survival, and to identify risk factors for cognitive decline and  
54  
55 dementia. Participants were invited to consent to brain donation after death. The ascertainment of  
56  
57 dementia status at death has been described in detail (34) and was based on review of information  
58  
59

1  
2  
3 available from death certificates, last interview assessment and the informants' information about  
4 participants' function and cognition (Mini Mental State Examination – MMSE- score) during the last  
5 years of life. Brains sections from 299 participants were used in this study with the demographic and  
6  
7  
8  
9  
10  
11  
12  
13  
14  
15  
16  
17  
18  
19  
20  
21  
22  
23  
24  
25  
26  
27  
28  
29  
30  
31  
32  
33  
34  
35  
36  
37  
38  
39  
40  
41  
42  
43  
44  
45  
46  
47  
48  
49  
50  
51  
52  
53  
54  
55  
56  
57  
58  
59  
60

available from death certificates, last interview assessment and the informants' information about participants' function and cognition (Mini Mental State Examination – MMSE- score) during the last years of life. Brains sections from 299 participants were used in this study with the demographic and cognitive profile of the cohort described in Table 1. All analyses were conducted blind to *in vivo* state.

### *Immunohistochemistry*

Optimisation of the staining for the polyclonal rabbit anti-TREM2 antibody HPA010917 (Sigma, Gillingham, UK) and the polyclonal goat anti-TREM2 AF1828 (R&D, Abingdon, UK), was performed using different antigen retrieval pretreatments on splenic tissue, a myeloid organ used as a positive control. These included: (i) no pretreatment, (ii) heat retrieval pretreatment with either (a) citrate buffer pH6, or (b) EDTA buffer pH8. The best immunodetection was obtained with the HPA010917 anti-TREM2 antibody at a concentration of 1:100 after EDTA pH8 microwave pretreatment (Fig 1).

Four µm sections of formalin-fixed paraffin-embedded tissue from the middle frontal gyrus were screened for TREM2 protein immunoreactivity using the HPA010917 anti-TREM2 antibody under the same conditions.

Biotinylated secondary antibody from Dako (Glostrup, Denmark) was visualized using the avidin-biotin-peroxidase complex method (Vectastain Elite ABC from Vector Laboratories (Peterborough, UK)) with 3,3' diaminobenzidine (DAB, Vector Laboratories (Peterborough, UK)) as chromogen and 0.05% hydrogen peroxide as substrate. All sections were counterstained with haematoxylin then dehydrated before mounting in DePeX (VWR International, Lutterworth, UK). For each run, sections incubated in the absence of the primary antibody were included as negative controls, and a section of spleen was included as a positive control to ensure staining consistency across the different runs (Figure 1A).

All 299 cases were assessed for parenchymal TREM2 immunostaining blinded to the identity of the cases by 2 independent assessors (MF and DB). Morphological pathological features were assessed on sections stained with haematoxylin and eosin (H&E). The identification and assessment

1  
2  
3 of the infarcts was performed by an experienced neuropathologist (JARN) on the H&E stained slides  
4 according to the current classification (Table 2) (7, 16, 21). TREM2-positive cells were scored within  
5 the identified infarcts using x20 objective magnification and reported as: - = 0; + = 1-20; ++ = 21-50;  
6  
7  
8  
9  
10  
11  
12  
13  
14  
15  
16  
17  
18  
19  
20  
21  
22  
23  
24  
25  
26  
27  
28  
29  
30  
31  
32  
33  
34  
35  
36  
37  
38  
39  
40  
41  
42  
43  
44  
45  
46  
47  
48  
49  
50  
51  
52  
53  
54  
55  
56  
57  
58  
59  
60

Sections previously stained for the microglial phagocytic markers Iba1 (rabbit polyclonal, Wako, Japan) and CD68 (clone PG-M1, Dako Glostrup, Denmark) (30) were reviewed.

## Results

### *TREM2 expression in the spleen*

The spleen contains numerous monocytes/macrophages and so is a suitable choice for a TREM2 positive control for immunohistochemistry. Only the Sigma antibody HPA010917 was able to detect the monocytes/macrophages (Figure 1A). No staining was obtained on the same spleen with the R&D AF1828 antibody despite the use of different pretreatments for antigen retrieval (Figure 1B). Therefore, the CFAS brain sections were screened for TREM2 expression using the HPA010917 antibody.

### *Microglia and perivascular macrophages in the human brain are TREM2 negative*

In the cerebral cortex, Iba1 immunohistochemistry demonstrated microglia as expected with typical morphology, having numerous short processes (ramified microglia), and perivascular macrophages (Figure 2A). In contrast, the microglia and perivascular macrophages were TREM2 negative (Figure 2B), with TREM2 immunoreactivity detected only in cells in blood vessel lumens, having round nuclei and scanty cytoplasm morphologically consistent with circulating monocytes (Figure 2B) and acting, in effect, as an internal positive control. The TREM2-positive intravascular monocytes were observed in all 299 cases. In addition 15 of the 299 cases, in which small infarcts were detected within the sections, presented another pattern of staining as described below.

### *Parenchymal TREM2 positive cells in acute infarction*

1  
2  
3 Interestingly, in contrast to the situation in relatively normal brain tissue, extravascular TREM2-  
4 positive cells were identified in regions of acute infarction included in the tissue sections. Iba1  
5 immunohistochemistry identified microglia with mainly ramified morphology (Figure 2C), which  
6 were TREM2 negative (Figure 2D), and this was observed within the 299 cases. However, TREM2  
7 immunolabelling was detected in extravascular parenchymal cells within the acutely infarcted zone.  
8 These TREM2 positive parenchymal cells had similar morphology to the intravascular monocytes and  
9 are likely to represent circulating monocytes that have been recruited from the circulation into the  
10 brain parenchyma in response to the infarct (Figure 2C-D).  
11  
12

13  
14  
15 Sixteen infarcts were identified in H&E-stained sections on morphological grounds in 15 of the  
16 299 cases studied in total (Table 3). The histological stage of evolution of the infarcts was assessed  
17 which, in turn, could give approximate ages to the lesions (Table 2) (7, 16, 21). No parenchymal  
18 TREM2 immunoreactivity was observed in the 2 cases with very acute infarcts (<24 hours) preceding  
19 a cellular reaction (Figure 3A-C), or in the 6 old infarct cases (> several weeks old) despite abundance  
20 of foamy macrophages and CD68 immunoreactivity at that stage (Figure 3G-I, Table 3). In contrast,  
21 TREM2 immunoreactivity in the brain parenchyma was identified in 5 out of 6 acute infarcts (1-3  
22 days) (Figure 3D-F, Table 3). The TREM2-positive cells in the acute infarcts had round nuclei and  
23 scanty cytoplasm, and were confined to the infarcted tissue, thus likely representing monocytes  
24 migrated from the circulation into the infarct. One out of 2 cases with a subacute infarct (~1 week  
25 old, overlap stage between acute and old infarct) had both TREM2 and CD68 immunolabelled  
26 macrophages (Table 3).  
27  
28  
29  
30  
31  
32  
33  
34  
35  
36  
37  
38  
39  
40  
41  
42  
43  
44  
45

## 46 Discussion

47  
48 Our findings of a positive TREM2 signal in the splenic macrophages with the HPA010917  
49 antibody are consistent with the antibody characterisation study which identified that this antibody is  
50 specific for TREM2 both *in vitro* and *in vivo* (33) and expressed on myeloid cells. Our unexpected  
51 findings in the human brain revealed firstly that, although abundant microglia were identified by  
52 immunoreactivity for Iba1, the microglia did not express TREM2 in the 299 cases of the CFAS  
53 cohort. This was despite TREM2 positivity of monocytes within the lumens of blood vessels in the  
54  
55  
56  
57  
58  
59  
60



1  
2  
3 sections of brain tissue, representing monocytes circulating in the blood. Secondly, TREM2-positive  
4  
5 cells were present within the brain parenchyma in acute infarcts (1-3 days approximately). These  
6  
7 TREM2-positive cells had the morphology of monocytes and macrophages, rather than process-  
8  
9 bearing microglia, and seem likely to be monocytes recruited from the bloodstream in response to the  
10  
11 infarct; subsequently evolving into macrophages as they begin to phagocytose the necrotic tissue. As  
12  
13 expected, these acute infarcts prior to the onset of phagocytosis, lacked staining with the lysosomal  
14  
15 marker CD68. In contrast, older infarcts in which phagocytosis is taking place contained CD68-  
16  
17 positive macrophages, consistent with previous studies in humans and laboratory animals (1, 9, 28),  
18  
19 but these macrophages lacked TREM2 immunoreactivity. Interestingly, one of the two subacute  
20  
21 infarcts cases had immunoreactivity of cells for both TREM2 and CD68. These findings imply that  
22  
23 following infarction and the breakdown of the blood-brain barrier, TREM2-positive CD68-negative  
24  
25 monocytes invade the brain parenchyma at the site of the injury (consistent with the role of TREM2  
26  
27 expression in chemotaxis (29)), differentiate into TREM2-positive CD68-positive macrophages that  
28  
29 became, over a period of about a week, phagocytic CD68-positive TREM2-negative macrophages.  
30  
31 The subacute infarct, approximately one week in age (7, 16, 21), support this phenotypic change by  
32  
33 having both TREM2 and CD68 immunoreactivity in morphologically macrophage-like cells present  
34  
35 within the damaged parenchyma. In the cases with infarcts, in the surrounding uninvolved brain  
36  
37 parenchyma microglia were immunoreactive for Iba1, showed variable degrees of CD68 expression,  
38  
39 but were consistently unlabelled for TREM2, (30).

41  
42 Overall, it appears that the TREM2 antibody employed in this study (HPA010917) labels  
43  
44 specifically monocytes circulating in the bloodstream and monocytes recruited from the blood into the  
45  
46 brain parenchyma in response to tissue injury, but not microglia resident within the brain. We are  
47  
48 acknowledging that the level of TREM2 expression in microglia could be below the level of detection  
49  
50 by our methods. It is theoretically possible that lack of microglial immunoreactivity with this  
51  
52 antibody could be due to cleavage of the TREM2 protein proximal to the binding site of the antibody,  
53  
54 but such cleavage would have to be selective for microglia and not monocytes or macrophages. The  
55  
56 antibody has been raised against a recombinant 35 amino acid sequence (amino acids 196-230) of  
57  
58 TREM2 corresponding to the cytoplasmic sequence. The identified cleavage site of TREM2 C-  
59  
60

1  
2  
3 terminal to histidine 157 sheds an ectodomain but appears to leave the HPA010917 antibody binding  
4 site within the cell cytoplasm (23, 39), consistent with the cytoplasmic signal detected on the tissue.  
5  
6

7 Our observations are consistent with: (i) the original study of the characterization of TREM2 in  
8 human immature monocyte-derived dendritic cells (2), (ii) the findings in one control and one AD  
9 case using the same antibody in the previous study assessing the sensitivity specificity of TREM2  
10 antibodies by Western blot followed for the HPA010917 antibody by immunohistochemistry after  
11 preabsorption with the recombinant protein to confirm the specificity-(33), (iii) with the detection of  
12 TREM2 expression in in monocyte-derived macrophages but not microglia in APP/PS1 mice (19),  
13 and (iv) the absence of association between TREM2 and Iba1 protein levels detected by Western blots  
14 in human frontal cortex (32). Our findings are also in accord with the proposed role of TREM2 as  
15 regulator of phagocytosis, as the brain parenchymal cells labelled in this study are indeed performing  
16 a phagocytic function in clearing necrotic tissue debris in infarcts.  
17  
18  
19  
20  
21  
22  
23  
24  
25  
26

27 We did not observe any TREM2 staining around plaques in the CFAS cases with AD pathology,  
28 therefore providing no evidence that in humans peri-plaque microglia are derived from circulating  
29 monocytes. Our observation appears different from a previous study on 11 *post-mortem* cases that  
30 describes TREM2 immunoreactivity on microglia associated with plaques using the R&D AF1828  
31 antibody. In this study, the authors checked the specificity of the antibody using Western blot  
32 analysis but they did not carry out TREM2 immunodetection on a positive myeloid tissue (27). A  
33 previous study demonstrated that whereas this antibody was able to recognise human recombinant  
34 TREM2 on Western blot, it was not able to label monocytes/macrophages, dendritic cells or  
35 osteoclasts on human tissue (33). Of note, the authors did not perform single immunodetection of  
36 TREM2, but instead presented high magnification pictures of double staining with HLA-DR using  
37 light microscope. The quality of the staining required arrows to indicate the positive cells questioning  
38 its reliability.  
39  
40  
41  
42  
43  
44  
45  
46  
47  
48  
49  
50

51 Our findings counter the observations in animal models, such as the ones in the APP23 and the  
52 *APP<sup>swe</sup>/PS1<sup>dE9</sup>* models using a Santa Cruz TREM2 antibody (8 {Jiang, 2014 #4121) or in the  
53 5XFAD using a R&D TREM2 antibody (44). These studies observed (i) upregulation of TREM2  
54 expression during disease progression, (ii) TREM2-positive microglia and (iii) TREM2-positive  
55  
56  
57  
58  
59  
60

1  
2  
3 microglia around plaques. Therefore, our own observations appear to challenge the fidelity of the  
4  
5 animal models relating to this aspect of the complexity of human AD pathophysiology. Importantly,  
6  
7 the time-frame also differs: in the experimental models, the response was typically studied after a  
8  
9 matter of few months; whereas the brains of the patients with dementia are being studied several years  
10  
11 following the onset of the disease. However, one of the strengths of the CFAS cohort is that it is the  
12  
13 result of an unbiased representation of the elderly population and thus includes people at all stages of  
14  
15 AD including early stages of plaque formation. Some human studies have identified the presence of  
16  
17 TREM2 in human brain tissue using biochemical methods only (e.g. Western blot, mRNA). They do  
18  
19 not contradict our findings as human brain tissue homogenates will include circulating monocytes  
20  
21 within the lumens of blood vessels and so these methods will not distinguish between these cells and  
22  
23 microglia.  
24

25  
26 Our study in a large cohort of human *post-mortem* cases does not contradict the evidence for the  
27  
28 role of TREM2 and the immune system as risk factors for AD despite the absence of TREM2-positive  
29  
30 microglia. The genetic data suggest that *TREM2* gene variation, although rare, can alter risk as  
31  
32 substantially as APOE genotype (10, 20). Instead, it draws attention to an important role for  
33  
34 peripheral myeloid cells, consistent with a role for systemic inflammation, in the development and  
35  
36 progression of AD (13). Of note, a recent study observed increased peripheral blood *TREM2* mRNA  
37  
38 in AD is associated with cognitive decline and hippocampal atrophy, supporting TREM2 as a putative  
39  
40 peripheral biomarker for AD (38).  
41

42  
43 Several pieces of evidence are in favour of a communication between the systemic immune  
44  
45 system and the brain. Experimental studies have demonstrated that systemic inflammation whether in  
46  
47 the form of a chronic disease (e.g. osteoarthritis), or infection (e.g. LPS) can enhance AD pathology in  
48  
49 animal models (22, 25, 26, 36). This led to the prediction that systemic infection and inflammation  
50  
51 could exaggerate the acute symptoms of disease, increase the ongoing tissue injury and impact on the  
52  
53 rate of disease progression. In clinical studies, the presence of systemic infection and inflammation,  
54  
55 with raised peripheral pro-inflammatory cytokines, was associated with a marked increase in the rate  
56  
57 of long-term cognitive decline and the neuropsychiatric features typical of sickness behaviour in AD  
58  
59 patients (14, 15, 18). This finding is consistent with information from *in vivo* PET imaging showing  
60

1  
2  
3 that the cognitive decline is associated with the inflammatory signal in the brain (6). The use of the  
4  
5 tumour necrosis factor (TNF)- $\alpha$  inhibitor etanercept in a small randomized, placebo-controlled,  
6  
7 double-blind study to block low-grade peripheral systemic inflammation in AD patients showed  
8  
9 trends that favour etanercept compared to placebo (4).

10  
11 Further studies with additional antibodies to TREM2, as they are developed, will help clarify our  
12 understanding of this protein which genetics indicates is important in AD pathogenesis. Overall, our  
13  
14 demonstration here that despite *TREM2* gene variation influencing risk of AD, TREM2 positive cells  
15  
16 are largely restricted to the blood circulation, promotes a role for systemic inflammation in the  
17  
18 development and progression of AD, and highlights the need for a greater understanding of the  
19  
20 communication involved between the periphery and the brain.  
21  
22  
23  
24

### 25 **Acknowledgements**

26  
27 We are grateful to the respondents, their families and their family practices for all their help in  
28  
29 the CFAS study and particularly for agreement to participate in the brain donation programme. We  
30  
31 thank Gill Forster from the SITraN (Sheffield) for facilitating tissue access; the Histochemistry  
32  
33 Research Unit and the Biomedical Imaging Unit of the Faculty of Medicine, University of  
34  
35 Southampton for facilitating tissue sectioning, staining and data collection.  
36

37  
38 The study was supported in part by: a Special Project grant and a Programme grant from the  
39  
40 MRC and the Department of Health; the UK NIHR Biomedical Research Centre for Ageing and Age -  
41  
42 related Disease Award to the Newcastle-upon-Tyne Hospitals Foundation Trust; the Cambridge Brain  
43  
44 Bank is supported by the NIHR Cambridge Biomedical Research Centre; The Cambridgeshire and  
45  
46 Peterborough NIHR CLAHRC; Nottingham University Hospitals NHS Trust; University of Sheffield  
47  
48 and the Sheffield Teaching Hospitals NHS Foundation Trust; The Thomas Willis Oxford Brain  
49  
50 Collection, supported by the Oxford Biomedical Research Centre; The Walton Centre NHS  
51  
52 Foundation Trust, Liverpool. We would like to acknowledge the essential contribution of the liaison  
53  
54 officers, the general practitioners, their staff, and nursing and residential home staff. We are grateful  
55  
56 to our respondents and their families for their generous gift to medical research, which has made this  
57  
58 study possible.  
59  
60

### Conflict of interest

The authors do not have conflict of interest.

### Ethics

The study received ethical approval from the Cambridgeshire 1 Research Ethics Committee (Rec number: 10/H0304/61/).

### Funding

This study was supported by the Medical Research Council UK (G0900582), and the funder has no role in study design, data collection and analysis, decision to publish or preparation of the manuscript.

### Contributors

MF performed the experiments and collected the data; SR tested the specificity of the antibodies; JC prepared the sections of the 299 cases; CB provided the clinical information; PGI provided the neuropathological data; JARN reviewed and classified the infarct cases and with DB conceived the study; DB wrote the manuscript.

### References

1. Andersson PB, Perry VH, Gordon S (1991) The kinetics and morphological characteristics of the macrophage-microglial response to kainic acid-induced neuronal degeneration. *Neuroscience*.42(1):201-14.
2. Bouchon A, Hernandez-Munain C, Cella M, Colonna M (2001) A DAP12-mediated pathway regulates expression of CC chemokine receptor 7 and maturation of human dendritic cells. *J Exp Med*.194(8):1111-22.
3. Brayne C, McCracken C, Matthews FE, Medical Research Council Cognitive F, Ageing S (2006) Cohort profile: the Medical Research Council Cognitive Function and Ageing Study (CFAS). *Int J Epidemiol*.35(5):1140-5.
4. Butchart J, Brook L, Hopkins V, Teeling J, Puntener U, Culliford D, Sharples R, Sharif S, McFarlane B, Raybould R, Thomas R, Passmore P, Perry VH, Holmes C (2015) Etanercept in Alzheimer disease: A randomized, placebo-controlled, double-blind, phase 2 trial. *Neurology*.84(21):2161-8.

5. Cady J, Koval ED, Benitez BA, Zaidman C, Jockel-Balsarotti J, Allred P, Baloh RH, Ravits J, Simpson E, Appel SH, Pestronk A, Goate AM, Miller TM, Cruchaga C, Harms MB (2014) TREM2 variant p.R47H as a risk factor for sporadic amyotrophic lateral sclerosis. *JAMA Neurol.*71(4):449-53.
6. Edison P, Archer HA, Gerhard A, Hinz R, Pavese N, Turkheimer FE, Hammers A, Tai YF, Fox N, Kennedy A, Rossor M, Brooks DJ (2008) Microglia, amyloid, and cognition in Alzheimer's disease: An [11C](R)PK11195-PET and [11C]PIB-PET study. *Neurobiol Dis.*32(3):412-9.
7. Ellison D, Love S, Chimelli L, Harding BN, Lowe JS, Vinters HV, Brandner S, Yong WH (2013) Vascular disease and infarcts. In: *Neuropathology*, Ellison D, Love S, (eds.), Chapter Vascular disorders, pp. 183-231, Elsevier Mosby: Italy.
8. Frank S, Burbach GJ, Bonin M, Walter M, Streit W, Bechmann I, Deller T (2008) TREM2 is upregulated in amyloid plaque-associated microglia in aged APP23 transgenic mice. *Glia.*56(13):1438-47.
9. Fumagalli S, Perego C, Pischiutta F, Zanier ER, De Simoni MG (2015) The ischemic environment drives microglia and macrophage function. *Frontiers in neurology.*6:81.
10. Guerreiro R, Wojtas A, Bras J, Carrasquillo MM, Rogaeva E, Majounie E, Cruchaga C, Sassi C, Kauwe JS, Younkin SG, Hazrati L, Collinge J, Pocock J, Lashley T, Williams J, Lambert JC, Amouyel P, Goate AM, Rademakers R, Morgan K, Powell J, St George-Hyslop P, Singleton AB, Hardy J, Group ftAGA (2012) TREM2 Variants in Alzheimer's Disease. *N Engl J Med.*368(2):117-27.
11. Guerreiro RJ, Lohmann E, Bras JM, Gibbs JR, Rohrer JD, Gurunlian N, Dursun B, Bilgic B, Hanagasi H, Gurvit H, Emre M, Singleton A, Hardy J (2013) Using exome sequencing to reveal mutations in TREM2 presenting as a frontotemporal dementia-like syndrome without bone involvement. *JAMA Neurol.*70(1):78-84.
12. Hickman SE, Kingery ND, Ohsumi TK, Borowsky ML, Wang LC, Means TK, El Khoury J (2013) The microglial sensome revealed by direct RNA sequencing. *Nat Neurosci.*16(12):1896-905.
13. Holmes C (2013) Systemic inflammation and Alzheimer's Disease. *Neuropathol Appl Neurobiol.*39(1):51-68.
14. Holmes C, Cunningham C, Zotova E, Culliford D, Perry VH (2011) Proinflammatory cytokines, sickness behavior, and Alzheimer disease. *Neurology.*77(3):212-8.
15. Holmes C, Cunningham C, Zotova E, Woolford J, Dean C, Kerr S, Culliford D, Perry VH (2009) Systemic inflammation and disease progression in Alzheimer disease. *Neurology.*73(10):768-74.
16. Hossmann KA, Heiss WD (2014) Neuropathology and pathophysiology of stroke. In: *Textbook of Stroke Medicine*, Brainin M, Heiss WD, (eds.), Chapter Biology, pathophysiology and imaging, pp. 1-10, Cambridge University Press: Cambridge.
17. Hsieh CL, Koike M, Spusta SC, Niemi EC, Yenari M, Nakamura MC, Seaman WE (2009) A role for TREM2 ligands in the phagocytosis of apoptotic neuronal cells by microglia. *J Neurochem.*109(4):1144-56.
18. Ide M, Harris M, Stevens A, Sussams R, Hopkins V, Culliford D, Fuller J, Ibbett P, Raybould R, Thomas R, Puenter U, Teeling J, Perry VH, Holmes C (2016) Periodontitis and Cognitive Decline in Alzheimer's Disease. *PLoS One.*11(3):e0151081.
19. Jay TR, Miller CM, Cheng PJ, Graham LC, Bemiller S, Broihier ML, Xu G, Margevicius D, Karlo JC, Sousa GL, Cotleur AC, Butovsky O, Bekris L, Staugaitis SM, Leverenz JB, Pimplikar SW, Landreth GE, Howell GR, Ransohoff RM, Lamb BT (2015) TREM2 deficiency eliminates TREM2+ inflammatory macrophages and ameliorates pathology in Alzheimer's disease mouse models. *J Exp Med.*212(3):287-95.
20. Jonsson T, Stefansson H, Steinberg S, Jonsdottir I, Jonsson PV, Snaedal J, Bjornsson S, Huttenlocher J, Levey AI, Lah JL, Rujescu D, Hampel H, Giegling I, Andreassen OA, Engedal K, Ulstein I, Djurovic S, Ibrahim-Verbaas C, Hofman A, Ikram MA, Van Duijn CM, Thorsteinsdottir U, Kong A, Stefansson H (2012) Variant of TREM2 Associated with the Risk of Alzheimer's Disease. *N Engl J Med.*368(2):107-16.
21. Kalaria R, Ferrer I, Love S (2015) Vascular disease, hypoxia, and related conditions. In: *Greenfield's Neuropathology*, Love S, Budka H, Ironside JW, Perry A, (eds.), pp. 148-9, CRC Press Taylor & Francis Group: New-York.

- 1  
2  
3 22. Kitazawa M, Oddo S, Yamasaki TR, Green KN, LaFerla FM (2005) Lipopolysaccharide-  
4 induced inflammation exacerbates tau pathology by a cyclin-dependent kinase 5-mediated pathway in  
5 a transgenic model of Alzheimer's disease. *J Neurosci.*25(39):8843-53.
- 6 23. Kleinberger G, Yamanishi Y, Suarez-Calvet M, Czirr E, Lohmann E, Cuyvers E, Struyfs H,  
7 Pettkus N, Wenninger-Weinzierl A, Mazaheri F, Tahirovic S, Lleo A, Alcolea D, Fortea J, Willem M,  
8 Lammich S, Molinuevo JL, Sanchez-Valle R, Antonell A, Ramirez A, Heneka MT, Slegers K, van  
9 der Zee J, Martin JJ, Engelborghs S, Demirtas-Tatlidede A, Zetterberg H, Van Broeckhoven C, Gurvit  
10 H, Wyss-Coray T, Hardy J, Colonna M, Haass C (2014) TREM2 mutations implicated in  
11 neurodegeneration impair cell surface transport and phagocytosis. *Sci Transl Med.*6(243):243ra86.
- 12 24. Korvatska O, Leverenz JB, Jayadev S, McMillan P, Kurtz I, Guo X, Rumbaugh M,  
13 Matsushita M, Girirajan S, Dorschner MO, Kiiianitsa K, Yu CE, Brkanac Z, Garden GA, Raskind  
14 WH, Bird TD (2015) R47H Variant of TREM2 Associated With Alzheimer Disease in a Large Late-  
15 Onset Family: Clinical, Genetic, and Neuropathological Study. *JAMA Neurol.*72(8):920-7.
- 16 25. Kyrkanides S, Tallents RH, Miller JN, Olschowka ME, Johnson R, Yang M, Olschowka JA,  
17 Brouxhon SM, O'Banion MK (2011) Osteoarthritis accelerates and exacerbates Alzheimer's disease  
18 pathology in mice. *J Neuroinflammation.*8:112-20.
- 19 26. Lee JW, Lee YK, Yuk DY, Choi DY, Ban SB, Oh KW, Hong JT (2008) Neuro-inflammation  
20 induced by lipopolysaccharide causes cognitive impairment through enhancement of beta-amyloid  
21 generation. *J Neuroinflammation.*5:37-51.
- 22 27. Lue LF, Schmitz CT, Serrano G, Sue LI, Beach TG, Walker DG (2015) TREM2 Protein  
23 Expression Changes Correlate with Alzheimer's Disease Neurodegenerative Pathologies in Post-  
24 Mortem Temporal Cortices. *Brain Pathol.*25(4):469-80.
- 25 28. Margaritescu O, Mogoanta L, Pirici I, Pirici D, Cernea D, Margaritescu C (2009)  
26 Histopathological changes in acute ischemic stroke. *Romanian journal of morphology and*  
27 *embryology = Revue roumaine de morphologie et embryologie.*50(3):327-39.
- 28 29. Mazaheri F, Snaidero N, Kleinberger G, Madore C, Daria A, Werner G, Krasemann S, Capell  
29 A, Trumbach D, Wurst W, Brunner B, Bultmann S, Tahirovic S, Kerschensteiner M, Misgeld T,  
30 Butovsky O, Haass C (2017) TREM2 deficiency impairs chemotaxis and microglial responses to  
31 neuronal injury. *EMBO reports.*
- 32 30. Minett T, Classey J, Matthews FE, Fahrenhold M, Taga M, Brayne C, Ince PG, Nicoll JA,  
33 Boche D (2016) Microglial immunophenotype in dementia with Alzheimer's pathology. *J*  
34 *Neuroinflamm.*13(1):135-45.
- 35 31. Paloneva J, Manninen T, Christman G, Hovanes K, Mandelin J, Adolfsson R, Bianchin M,  
36 Bird T, Miranda R, Salmaggi A, Tranebjaerg L, Kontinen Y, Peltonen L (2002) Mutations in two  
37 genes encoding different subunits of a receptor signaling complex result in an identical disease  
38 phenotype. *American Journal of Human Genetics.*71(3):656-62.
- 39 32. Perez SE, Nadeem M, He B, Miguel JC, Malek-Ahmadi MH, Chen K, Mufson EJ (2017)  
40 Neocortical and hippocampal TREM2 protein levels during the progression of Alzheimer's disease.  
41 *Neurobiol Aging.*54:133-43.
- 42 33. Satoh JI, Kawana N, Yamamoto Y, Ishida T, Saito Y, Arima K (2013) A survey of TREM2  
43 antibodies reveals neuronal but not microglial staining in formalin-fixed paraffin-embedded  
44 postmortem Alzheimer's brain tissues. *Alzheimers Res Ther.*5(4):30.
- 45 34. Savva GM, Wharton SB, Ince PG, Forster G, Matthews FE, Brayne C, Medical Research  
46 Council Cognitive F, Ageing S (2009) Age, neuropathology, and dementia. *N Engl J*  
47 *Med.*360(22):2302-9.
- 48 35. Schmid CD, Sautkulis LN, Danielson PE, Cooper J, Hasel KW, Hilbush BS, Sutcliffe JG,  
49 Carson MJ (2002) Heterogeneous expression of the triggering receptor expressed on myeloid cells-2  
50 on adult murine microglia. *J Neurochem.*83(6):1309-20.
- 51 36. Sly LM, Krzesicki RF, Brashler JR, Buhl AE, McKinley DD, Carter DB, Chin JE (2001)  
52 Endogenous brain cytokine mRNA and inflammatory responses to lipopolysaccharide are elevated in  
53 the Tg2576 transgenic mouse model of Alzheimer's disease. *Brain Res Bull.*56(6):581-8.
- 54 37. Takahashi K, Rochford CD, Neumann H (2005) Clearance of apoptotic neurons without  
55 inflammation by microglial triggering receptor expressed on myeloid cells-2. *J Exp Med.*201(4):647-  
56 57.
- 58  
59  
60

- 1  
2  
3 38. Tan YJ, Ng ASL, Vipin A, Lim JKW, Chander RJ, Ji F, Qiu Y, Ting SKS, Hameed S, Lee  
4 TS, Zeng L, Kandiah N, Zhou J (2017) Higher Peripheral TREM2 mRNA Levels Relate to Cognitive  
5 Deficits and Hippocampal Atrophy in Alzheimer's Disease and Amnesic Mild Cognitive Impairment.  
6 *J Alzheimers Dis.*58(2):413-23.
- 7 39. Thornton P, Sevalle J, Deery MJ, Fraser G, Zhou Y, Stahl S, Franssen EH, Dodd RB, Qamar  
8 S, Gomez Perez-Nievas B, Nicol LS, Eketjall S, Revell J, Jones C, Billinton A, St George-Hyslop PH,  
9 Chessell I, Crowther DC (2017) TREM2 shedding by cleavage at the H157-S158 bond is accelerated  
10 for the Alzheimer's disease-associated H157Y variant. *EMBO molecular medicine.*
- 11 40. Ulrich JD, Finn MB, Wang Y, Shen A, Mahan TE, Jiang H, Stewart FR, Piccio L, Colonna  
12 M, Holtzman DM (2014) Altered microglial response to Abeta plaques in APPPS1-21 mice  
13 heterozygous for TREM2. *Mol Neurodegener.*9:20.
- 14 41. Verloes A, Maquet P, Sadzot B, Vivario M, Thiry A, Franck G (1997) Nasu-Hakola  
15 syndrome: polycystic lipomembranous osteodysplasia with sclerosing leucoencephalopathy and  
16 presenile dementia. *J Med Genet.*34(9):753-7.
- 17 42. Wang Y, Cella M, Mallinson K, Ulrich JD, Young KL, Robinette ML, Gilfillan S, Krishnan  
18 GM, Sudhakar S, Zinselmeyer BH, Holtzman DM, Cirrito JR, Colonna M (2015) TREM2 lipid  
19 sensing sustains the microglial response in an Alzheimer's disease model. *Cell.*160(6):1061-71.
- 20 43. Yeh FL, Wang Y, Tom I, Gonzalez LC, Sheng M (2016) TREM2 Binds to Apolipoproteins,  
21 Including APOE and CLU/APOJ, and Thereby Facilitates Uptake of Amyloid-Beta by Microglia.  
22 *Neuron.*91(2):328-40.
- 23 44. Yuan P, Condello C, Keene CD, Wang Y, Bird TD, Paul SM, Luo W, Colonna M, Baddeley  
24 D, Grutzendler J (2016) TREM2 Haplodeficiency in Mice and Humans Impairs the Microglia Barrier  
25 Function Leading to Decreased Amyloid Compaction and Severe Axonal Dystrophy.  
26 *Neuron.*90(4):724-39.  
27  
28  
29  
30  
31  
32  
33  
34  
35  
36  
37  
38  
39  
40  
41  
42  
43  
44  
45  
46  
47  
48  
49  
50  
51  
52  
53  
54  
55  
56  
57  
58  
59  
60



**Table 1: Characteristics of the cohort according to dementia status**

	<b>No dementia</b> (n= 130)	<b>Dementia non-AD pathology</b> (n=65)	<b>Dementia with AD pathology</b> (n=83)	<b>Unknown dementia status</b> (n=21)
Number of women†	66 (51)	49 (75)	53 (64)	10 (48)
Age at death (years) ††	84 (77; 90)	89 (85; 93)	89 (83; 93)	86 (84; 91)
Years since last cognitive assessment††	1·1 (0·5; 1·8)	1·7 (0·8; 3·0)	1·5 (0·8; 3·2)	2·5 (2·0; 3·4)
MMSE at last assessment ††	25 (22; 28)	18 (11; 23)	11 (6; 17)	25 (22; 27)

† n(%)

†† median (interquartile range)

AD: Alzheimer's disease; MMSE: Mini-Mental State Examination

1  
2  
3  
4  
5  
6  
7  
8  
9  
10  
11  
12  
13  
14  
15  
16  
17  
18  
19  
20  
21  
22  
23  
24  
25  
26  
27  
28  
29  
30  
31  
32  
33  
34  
35  
36  
37  
38  
39  
40  
41  
42  
43  
44  
45  
46  
47  
48  
49

**Table 2: Morphological characterisation of lesion age** {Ellison, 2013 #4047;Hossmann, 2014 #3993;Kalaria, 2015 #4028}

Very acute infarct	<24hours	Neuronal ischaemia, very early neuropil fragmentation, no macrophages, no neutrophils, no microvascular proliferation, no astrocytosis
Acute infarct	1-3 days	Neuronal ischaemia, early neuropil degeneration, no macrophages, +/-neutrophils, no microvascular proliferation, no astrocytosis
Subacute infarct	approx. 1 week	Neuronal ischaemia, neuropil degeneration, foamy macrophages, no neutrophils, microvascular proliferation, surrounding early astrocytosis
Old infarct	several weeks to months/years	Neuronal loss, advanced neuropil degeneration (cavitated), +/-foamy macrophages, no neutrophils, no microvascular proliferation, surrounding astrocytosis

Table 3: Expression of TREM2 and CD68 in cerebral infarcts of different ages

ID	Infarct age	Morphological description	CD68	TREM2
1	Very acute	Very acute focal cortical ischaemia (<24hrs)	-	-
2	Very acute	Very acute focal cortical ischaemia (<24hrs)	-	-
3	Acute	Acute cortical infarct (1-3 days)	-	+++
4	Acute	Multiple acute cortical/white matter septic microemboli +/- acute infarction (1-3 days)	+/-	+++
5	Acute	Acute lesions [Multiple cortical/white matter septic microemboli + acute (1-3 days) and subacute (i.e. at least several days) infarcts]	+/-	++
6	Acute	Acute cortical infarct (1-3 days)	-	+
7	Acute	Acute cortical infarct (1-3 days)	-	+
8	Acute	Acute cortical infarct (1-3 days)	-	-
9	Subacute	Subacute cortical infarct (about 1 week)	++	+++
5	Subacute	Subacute lesions [Multiple cortical/white matter septic microemboli + acute (1-3 days) and subacute (i.e. at least several days)]	++	-
10	Old	Old cortical micro-infarct (>several months)	+	-
11	Old	Old infarct (a few weeks)	+++	-
12	Old	Old cortical infarct (many months-years)	+	-
13	Old	Old cortical infarct (many months-years)	+	-
14	Old	Old white matter infarct (several months)	++	-
15	Old	Old cortical micro-infarct	++	-
16	n/a	No lesion	-	-

1  
2  
3  
4  
5  
6  
7  
8  
9  
10  
11  
12  
13  
14  
15  
16  
17  
18  
19  
20  
21  
22  
23  
24  
25  
26  
27  
28  
29  
30  
31  
32  
33  
34  
35  
36  
37  
38  
39  
40  
41  
42  
43  
44  
45  
46  
47  
48  
49  
50  
51  
52  
53  
54  
55  
56  
57  
58  
59  
60

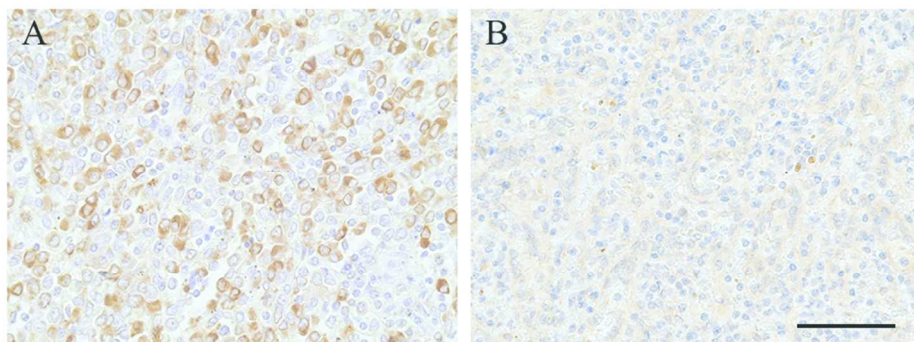


Figure 1: TREM2 immunostaining in spleen with (A) the anti-TREM2 antibody HPA010917 from Sigma and with (B) the anti-TREM2 AF1828 from R&D. Haematoxylin counterstaining, scale bar = 50µm.

88x36mm (300 x 300 DPI)

er Review Only

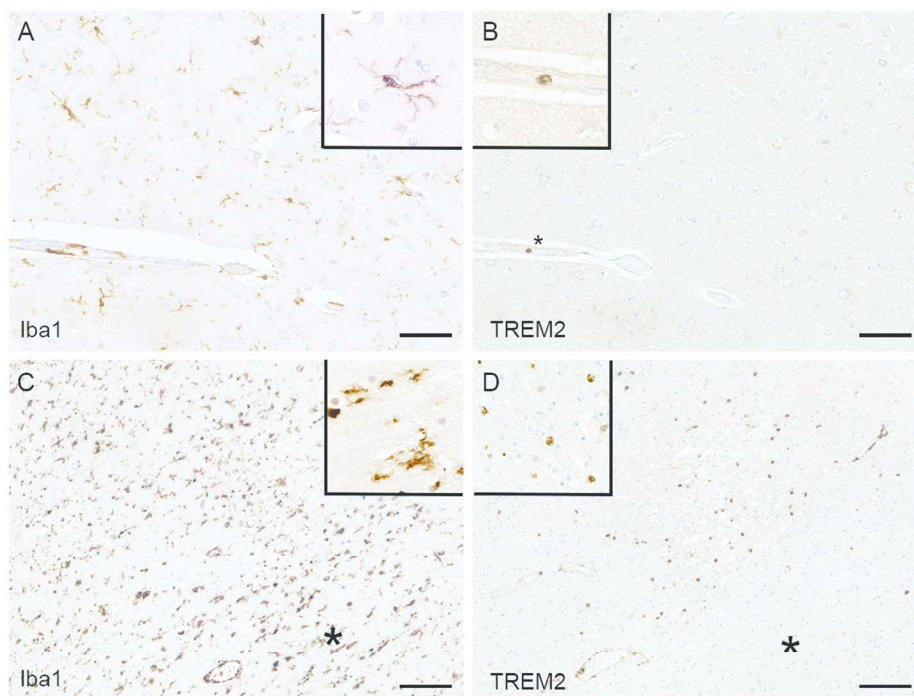


Figure 2: Iba1 and TREM2 immunolabelling. (A) Iba1 staining recognises ramified microglia and perivascular macrophages; whereas (B) TREM2 staining in the same area detects only intravascular monocytes (\*) but not microglia or perivascular macrophages (uninfarcted area). Acute infarct showing (C) high expression Iba1 in microglia and perivascular macrophages and (D) TREM2-positive parenchymal cells within the infarct. The surrounding un-infarcted area contains Iba1-positive (C) TREM2-negative microglia (D)(\*). The extravascular TREM2-positive cells in the infarcted parenchyma have similar morphology to the TREM2-positive intravascular monocytes and likely represent recruitment of circulating monocytes to the infarcted tissue. Haematoxylin counterstaining, scale bar (A-B) = 50 $\mu$ m, (C-D) = 100 $\mu$ m.

110x84mm (300 x 300 DPI)

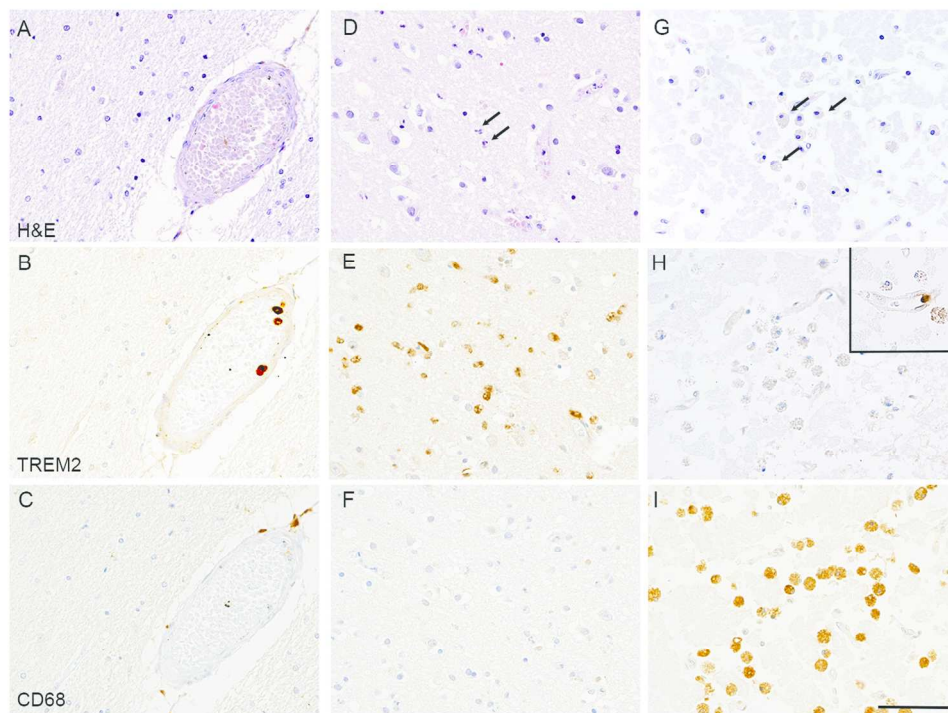


Figure 3: TREM2 and CD68 immunostaining in infarcts at different stages of evolution. (A-C) Uninfarcted region. (A) H&E staining showing preserved tissue. (B) TREM2 immunohistochemistry labelling of monocytes within the lumen of a blood vessel, but not microglia in the surrounding brain parenchyma. (C) CD68 immunohistochemistry showing staining of perivascular macrophages. (D-F) Acute cortical infarct with early neuropil disruption, neuronal ischaemia and infiltration by neutrophils as observed on (D) H&E staining. (E) TREM2 immunohistochemistry showing numerous TREM2 labelled cells infiltrating the acutely infarcted cortex and present within vascular lumens. The cells have the morphology of monocytes rather than foamy macrophages or process-bearing microglia. (F) CD68 immunohistochemistry showing no significant labelling of cells indicating the infarct is so acute that no phagocytosis of cell debris by macrophage/microglia has begun. (G) H&E staining showing an old cortical infarct with extensive neuropil disintegration and abundant foamy macrophages. (H) TREM2 immunohistochemistry showing the foamy macrophages are not labelled. A single monocyte is labelled within the lumen of a capillary within the infarct (inset top right). (I) CD68 immunohistochemistry showing immunoreactivity of abundant foamy macrophages. Counterstaining with Haematoxylin and eosin (H&E) for (A, D, G) and with Haematoxylin for (B, C, E, F, H, I); scale bar = 50µm.

129x99mm (300 x 300 DPI)