

Supplementary Appendix:

Table 1. Baseline characteristics ~~of in~~ IPF Cohort, period 1.

	IPF Cohort	
	PA101/Placebo	Placebo/PA101
N	12	12
Age	64 ± 6 (56-74 years)	69 ± 6 (59-79 years)
Sex	7 Male / 5 Female	8 Male / 4 Female
Ethnicity (Caucasian)	10	12
BMI	30.1 ± 4.5	28.2 ± 2.9
Time since IPF diagnosis	3.8 ± 2.3 (1 - 8 years)	4.3 ± 4.1 (1 - 13 years)
Duration of Chronic Cough	4.9 ± 3.0 (2-12 years)	6.3 ± 5.2 (1-16 years)
VAS <u>Cough Severity</u>	59.8 ± 19.1	63.1 ± 12.5
LCQ <u>(QOL)</u>	12.9 ± 3.6	12.9 ± 2.7

Data presented as mean ± SD. IPF = Idiopathic Pulmonary Fibrosis; N= Number; BMI = Body Mass Index; VAS = Cough severity Visual Analogue Scale; LCQ = Leicester Cough Questionnaire.

Table 2. Baseline characteristics ~~in~~-of CIC Cohort, period 1.

	CIC Cohort	
	PA101/Placebo	Placebo/PA101
N	13	14
Age	62 ± 14 (23-73 years)	62 ± 8 (44-73 years)
Sex	2 Male/11 Female	4 Male/10 Female
Ethnicity (Caucasian)	13	14
BMI	25.8 ± 5.0	29.4 ± 6.0
Duration of Chronic Cough	10.2 ± 6.3 (2-20 years)	9.6 ± 12.4 (2-43 years)
VAS	68.5 ± 17.8	72.3 ± 12.3
LCQ	11.1 ± 2.7	9.9 ± 2.4

Data presented as mean ± SD. CIC = Chronic Idiopathic Cough; BMI = Body Mass Index; VAS = Visual Analog Scale; LCQ = Leicester Cough Questionnaire.

Table 3. Post-hoc Analysis (Non-parametric Testing Using Mixed Effects Model on Ranked Data): Change from Baseline in Daytime Cough Frequency at Day 14 in IPF Cohort.

Least Squares Means							
Treatment	Estimate	Standard Error	DF	t Value	p Value	Lower CI	Upper CI
PA101	9.5791	1.2978	18	7.38	<.0001	6.8525	12.3057
Placebo	13.6410	1.3584	18	10.04	<.0001	10.7871	16.4949
Differences of Least Squares Means (PA101-Placebo)							
Estimate	Standard Error	DF	t Value	p Value	Lower CI	Upper CI	
-4.0619	1.8540	18	-2.19	0.0419	-7.9570	-0.1668	

IPF = Idiopathic Pulmonary Fibrosis; DF = Degrees of Freedom; CI = Confidence Interval.

Table 4. Post-hoc Analysis (Parametric Testing with Mixed Effects Model Using Non-transformed Data): Change from Baseline in Daytime Cough Frequency at Day 14 in IPF Cohort.

Least Squares Means							
Treatment	Estimate	Standard Error	DF	t Value	p Value	Lower CI	Upper CI
PA101	-14.5153	5.3138	35.5	-2.73	0.0098	-25.2974	-3.7333
Placebo	1.3429	5.6158	36.4	0.24	0.8123	-10.0419	12.7277
Differences of Least Squares Means							
Estimate	Standard Error	DF	t Value	p Value	Lower CI	Upper CI	
-15.8582	7.0077	11.4	-2.26	0.0441	-31.2213	-0.4951	

IPF = Idiopathic Pulmonary Fibrosis; DF = Degrees of Freedom; CI = Confidence Interval.

Table 5. Summary Statistics in Each Period: IPF Cohort

	Treatment Period 1 (IPF Cohort)		
	Baseline	D7	D14
PA101 (n=12)	67.1	38.7	40.1
% Change from baseline			-42%
Placebo (n=10)	60.3	63.4	58.7
% Change from baseline			-3%
	Treatment Period 2 (IPF Cohort)		
	Baseline	D7	D14
PA101 (n=11)	41.4	37.9	37.7
% Change from baseline			-9%
Placebo (n=11)	42.4	50.1	48.3
% Change from baseline			14%

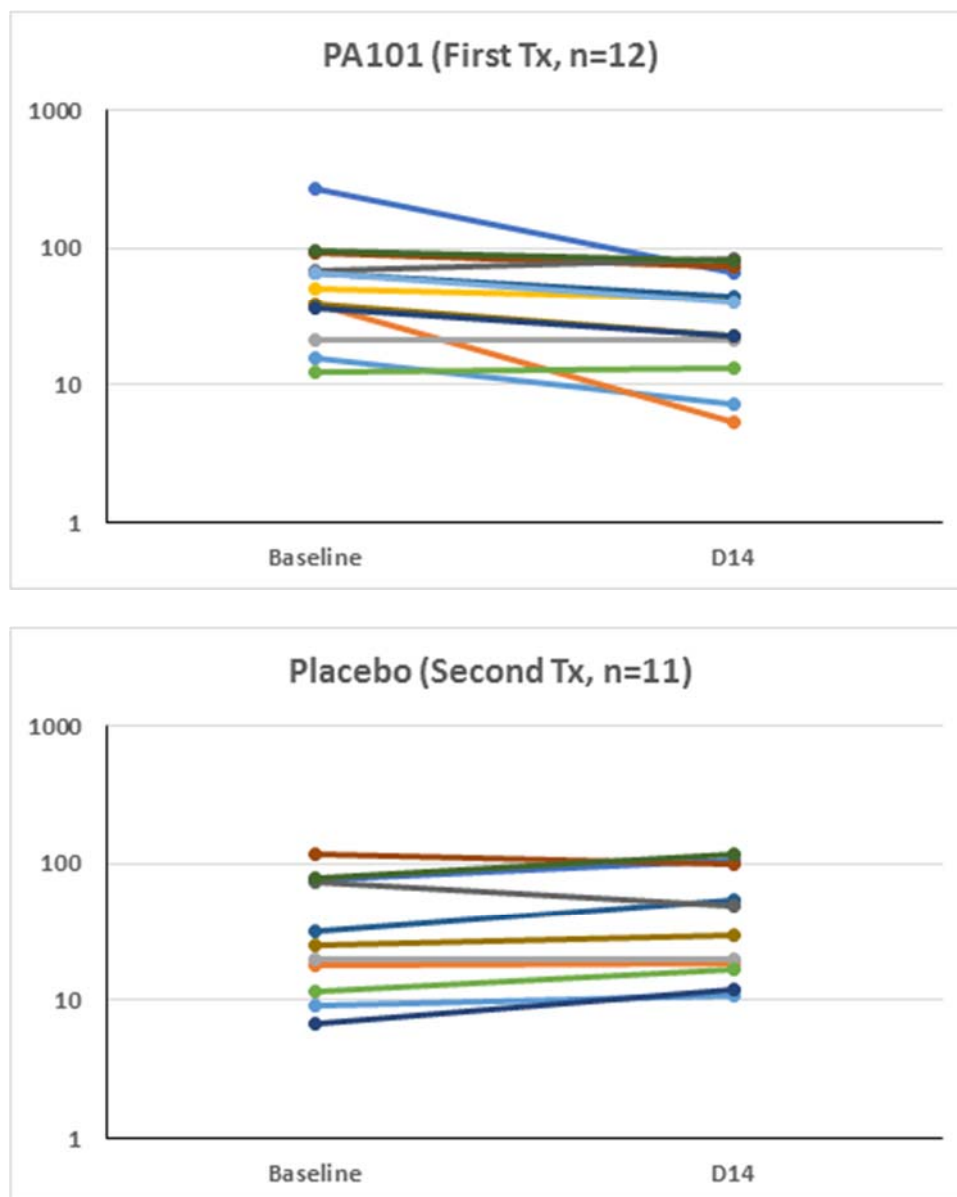
IPF = Idiopathic Pulmonary Fibrosis.

Table 6. Summary Statistics in Each Period: CIC Cohort

	Treatment Period 1 (CIC Cohort)		
	Baseline	D7	D14
PA101 (n=13)	65	49	35
% Change from baseline			-46%
Placebo (n=12)	53	41	48
% Change from baseline			-8%
	Treatment Period 2 (CIC Cohort)		
	Baseline	D7	D14
PA101 (n=10)	29	32	43
% Change from baseline			47%
Placebo (n=12)	37	27	25
% Change from baseline			-34%

CIC = Chronic Idiopathic Cough.

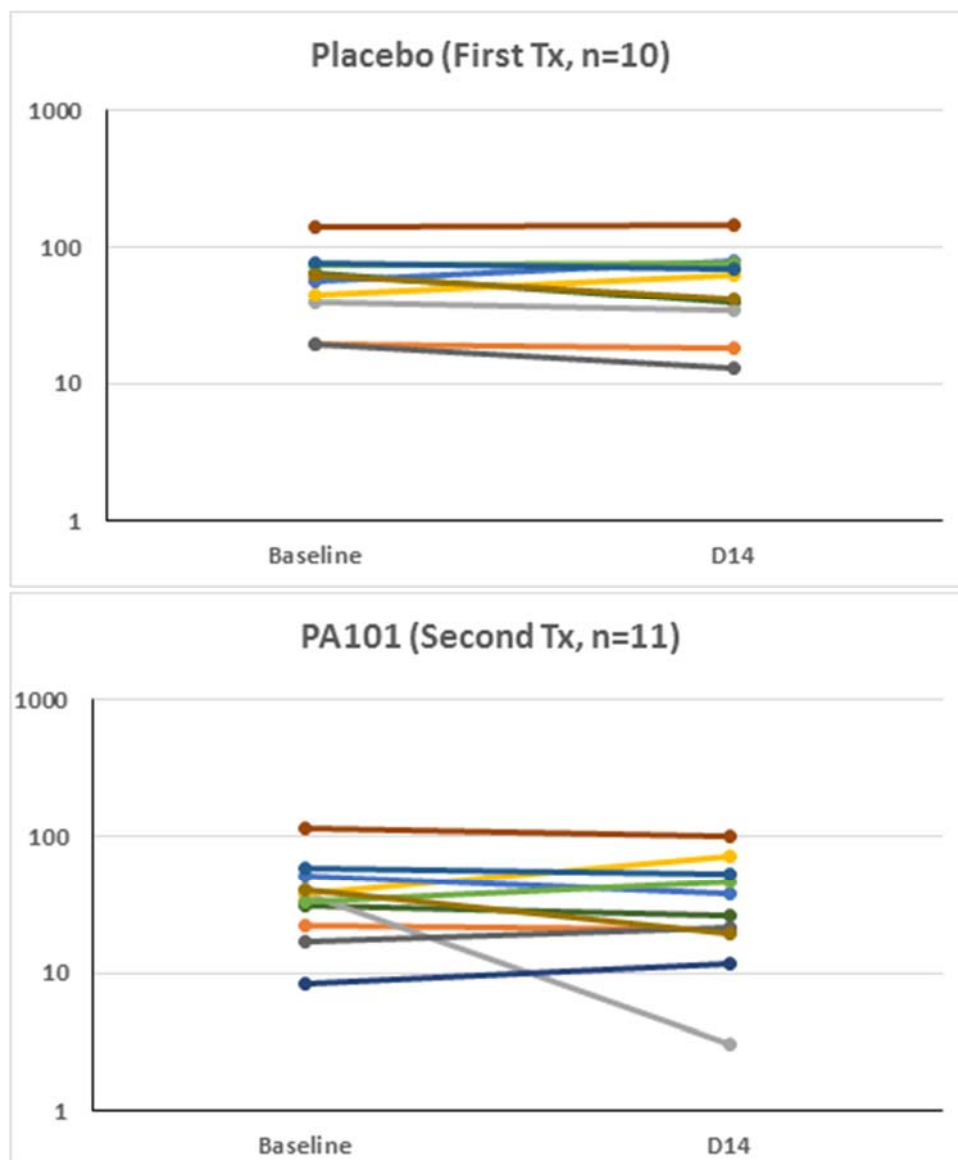
Figure 1. Individual Daytime Cough Frequency Data ~~by Treatment Period~~ in IPF Cohort (PA101 treatment period 1)



First Tx= period 1.

Second Tx= period 2.

Figure 2. Individual Daytime Cough Frequency Data ~~by Treatment Period~~ in CIC-IPF Cohort (Placebo period 1)



First Tx= period 1.

Second Tx= period 2.