



AUSTRALIAN RESEARCH COUNCIL,
NETWORK FOR EARLY
EUROPEAN RESEARCH

Delivering Digital Services for a National Research Network

Lessons and Implications for E-Research in the Humanities

Dr Toby Burrows

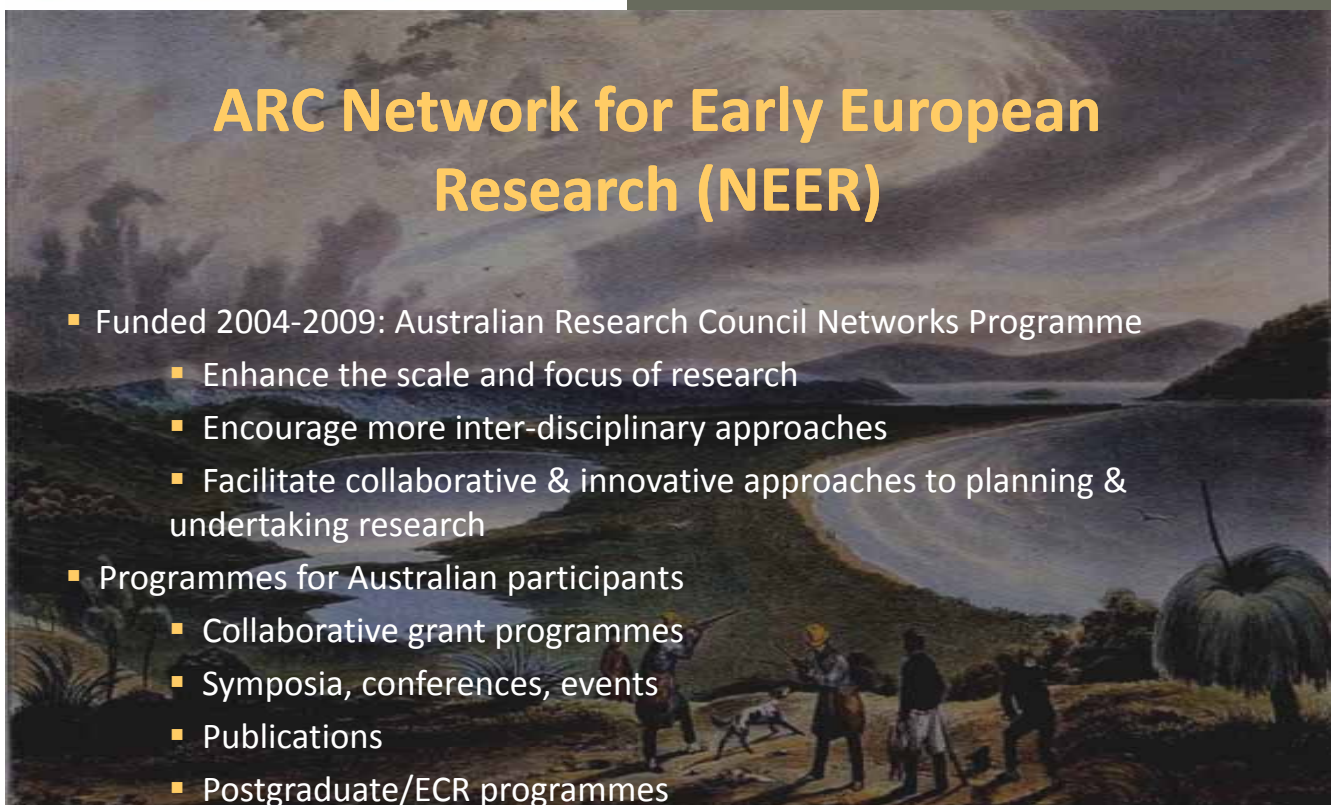
Dr Claire McIlroy



AUSTRALIAN RESEARCH COUNCIL,
NETWORK FOR EARLY
EUROPEAN RESEARCH

ARC Network for Early European Research (NEER)

- Funded 2004-2009: Australian Research Council Networks Programme
 - Enhance the scale and focus of research
 - Encourage more inter-disciplinary approaches
 - Facilitate collaborative & innovative approaches to planning & undertaking research
- Programmes for Australian participants
 - Collaborative grant programmes
 - Symposia, conferences, events
 - Publications
 - Postgraduate/ECR programmes





AUSTRALIAN RESEARCH COUNCIL,
NETWORK FOR EARLY
EUROPEAN RESEARCH



Participants & Partners

- 350+ individual researchers
- Australian universities and industry partners
 - Universities: Melbourne, Queensland, Sydney, UWA
 - State Library of New South Wales
 - State Library of Victoria
 - Australians Studying Abroad
 - Western Australian Museum
 - University of Western Australia Press
 - Perth Medieval and Renaissance Group
 - St George's Cathedral
 - Woodside Valley Foundation
- International linkages: CARMEN (EU), CARA (US)



AUSTRALIAN RESEARCH COUNCIL,
NETWORK FOR EARLY
EUROPEAN RESEARCH

Postgraduate and Early Career Programme

- Postgraduate and Advanced Training Seminars (PATS)
- Funding to attend conferences and seminars
- E-consult scheme
- Internships & work placements – Brepols (Belgium)
- Personal Web spaces





AUSTRALIAN RESEARCH COUNCIL,
NETWORK FOR EARLY
EUROPEAN RESEARCH

NEER's Digital Strategy

“The full use of innovative digital technologies, both to facilitate and promote communication between researchers and to develop and provide shared research resources”

(ARC Research Network application, 2004)



AUSTRALIAN RESEARCH COUNCIL,
NETWORK FOR EARLY
EUROPEAN RESEARCH

Digital Initiatives

- Communication
 - Web site, e-mail lists
 - Collaborative working tools and workspaces: **Confluence**
- Shared resources
 - Commercial databases: ProQuest (EEBO), Brepols (5 databases)
 - Skills and training: Brepols internships
 - Electronic publication: Parergon / Project Muse
 - Research repository: **PioNEER**
 - Heritage collections: **Europa Inventa**





NEER Confluence

- Collaborative software
- Commercial Wiki product (Atlassian)
- Hosted at University of W.A.
- Communication, discussion, annotation, collaborative writing
- News and blogs
- Personal spaces & group spaces
- Searchable
- Security and access controls
- Web-based
- Plug-ins



Welcome to NEER Confluence!

Confluence is a Web site where NEER participants can share information and work in progress with each other and with the world. The official NEER Web site is at: <http://www.neer.arts.uwa.edu.au/>

Where do I start?

To start browsing through the contents of the site, simply click on one of the Spaces listed below. Go to the "[Using Confluence](#)" space for help with creating and editing pages. Go to the [People Directory](#) to find out about individual NEER participants. Leave a comment on their home page to contact them. Or have a look at this page: [What can I use Confluence for?](#)

Spaces:

All

- [** Using Confluence **](#)
Help information and documentation for Confluence.
- [ARC Network for Early European Research](#)
General information about NEER.
- [Australasian Medievalism](#)
NEER Research Cluster established in 2006.
- [British Enlightenment Research Network](#)
NEER Research Cluster established in 2006.
- [CARMEN Graduate School of European Medieval Studies](#)
- [Cathedral, Court, City and Cloister: Western Music and its Sources 1100-1750](#)
NEER Research Cluster established in 2007.

Recently Updated

- | | | |
|---|--|--|
| Toby Burrows
Oct 26 | | Publications |
| Juanita Ruys
Oct 26 | | Latin Texts of the Twelfth-Century Self (Juanita Ruys) |
| Yasmin Haskell
Oct 23 | | LATIN CLINIC 13 NOVEMBER 2009, UNIVERSITY OF SYDNEY
img-X221359-0001.pdf
Narrationes de exilio sancti papae Martini (Bronwen Neil) |
| Laurence Johnson
Oct 22 | | Personal Details |
| Sally Anne Fisher
Oct 21 | | Personal Details |
| Kathleen Neal
Oct 20 | | My handy links |



People Directory

Show: [All People](#) | [People with Personal Spaces](#)

Jacqueline Fox	Jacqueline Grathon	Jacqueline Van Gent	Jann Hardin	Janet Hadley Williams	Janice Stockigt
Jan Pinder	Jared van Duinen	Jasonne Grathner	Jason Stoessel	Jason Talladoros	Jayne Anderson
Jenna Mead	Jennifer Ceppellini	Jennifer Dowling	Jennifer Ridden	Jennifer Smith	Jennifer Spinks
Jessica Cadwallader	Jillian Belbin	Joan Barclay-Lloyd	Joanna Cruickshank	Joanne Hocking	Joanne McEwan
John Crossley	John Ganim	John Gascoigne	John Griffiths	John Macarthur	John Melville-Jones
John Moorhead	John Schuster	John Scott	John Tillotson	John Tonkin	John Ward
Jonathan Walker	Jose Manuel Cerdá	Josh Brown	Josie Monro	Jovana Taylor	Juanita Huys
Judith Rontel	Judith Cottard	Julia List	Julianna Grigg	Julie Anne Davies	Julie Ann Smith
Julie Garwood	Julie Hotchin				

<< Previous 1 2 3 4 5 6 7 8 Next >>



Home

Added by [Kathleen Neal](#). last edited by [Kathleen Neal](#) on Oct 12, 2009 ([view change](#))

Welcome to my homepage.

Below you will find links to my personal details (including a recent CV), work in progress and other handy links.

Coming Up in 2010...

Papers:

- "Transmitting power through the written word: Letters and royal authority in England, 1270-1274", *International Congress on Medieval Studies*, Kalamazoo.
- "To dictate or delegate? The language of governance in English royal letters, 1272-1307", *International Medieval Congress*, Leeds.

Other activities:

- *From postgraduate to professional: planning and preparing for a career in medieval studies*, International Medieval Congress, Leeds. A round table panel presented America Graduate Student Committee.

"The move from being a postgraduate student to a practicing academic can be daunting. This panel of established scholars and early career researchers will discuss strategies for postgraduate future: how to identify and win grants, fellowships and jobs in medieval studies."

Participants:


- Rosamond McKitterick. History. Cambridge University
- Alison Stones, History of Art and Architecture, University of Pittsburgh
- Kathryne (Katy) Beebe, St Hilda's College, Oxford University
- Alaric Hall, School of English, University of Leeds

Kathleen

Children (2) [Hide Children](#) | [View in Hierarchy](#)

CARMEN GSEMS Working Group

 Edit  Add  Tools ▾

 Added by [Toby Burrows](#), last edited by [Martin Scott](#) on Apr 27, 2009 ([view change](#))

[This page can only be viewed and edited by members of the CARMEN GSEMS Working Group. Any "child" pages attached to this page will have the same restrictions.]

GSEMS Discussion




This space is reserved for general discussion regarding the Graduate School for European Medieval Studies. To make a comment, click 'Edit' in the top right corner of the screen, scroll to this section, then follow the example comment format below. Long discussions can perhaps be moved to the 'Comments' section at the very bottom of the page.

- [Martin Scott](#) Example comment.

GSEMS Documents

Attached below are draft versions of documents relating to the Graduate School for European Medieval Studies. Please feel free to download, read and post updated versions of them, or to post comments and suggested alterations below the 'Comments' heading.

Documents

Name	Size	Creator (Last Modifier)	Creation Date	Last Mod Date	Comment
 GSEMS Constitution Proposal.pdf	75 kB	Martin Scott	Apr 27, 2009	Apr 27, 2009	Edit Remove View
 GSEMS Working Group.pdf	49 kB	Martin Scott	Apr 27, 2009	Apr 27, 2009	Edit Remove View
 GSEMS CARMEN Meeting Report.pdf	120 kB	Martin Scott	Apr 27, 2009	Apr 27, 2009	Edit Remove View
 GSEMS Constitution Proposal.doc	56 kB	Martin Scott	Apr 27, 2009	Apr 27, 2009	Edit Remove View
 GSEMS Working Group.doc	60 kB	Martin Scott	Apr 27, 2009	Apr 27, 2009	Edit Remove View

Comments

To add a comment, press 'Edit' in the top right of the screen, find this heading, add to the list of bullet points below (using the same format), then press the 'Save' button at the top of the page.

- [Martin Scott](#) Example comment.

GSEMS Task List

Below is a suggested list of tasks for the GSEMS Working Group to complete. Tasks can be edited, given different levels of priority and taken by one or more members to complete, all by clicking the small triangle to the right.

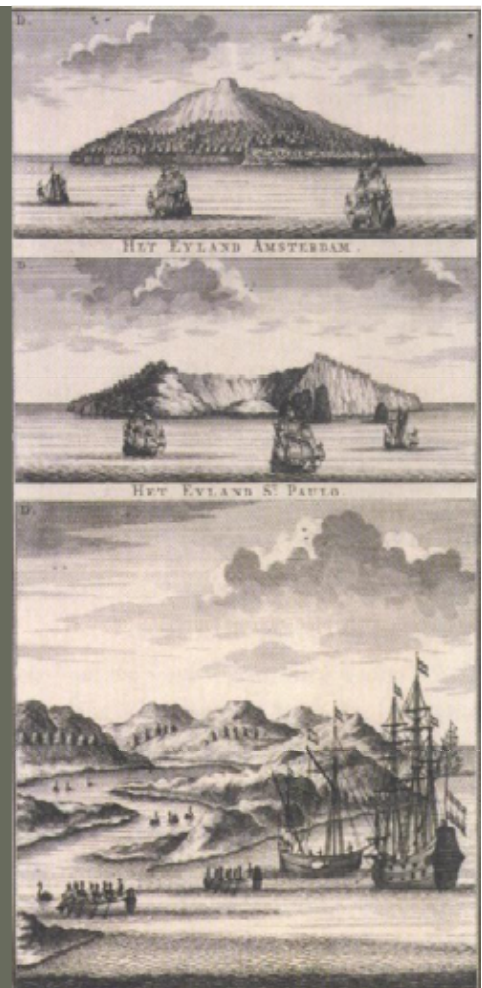
Working Group Tasks



AUSTRALIAN RESEARCH COUNCIL
NETWORK FOR EARLY
EUROPEAN RESEARCH

PioNEER

- NEER's digital repository of research outputs
- Representative and retrospective
- Beyond "publications" – other types of outputs and data
- DigiTool software
- Hosted by UWA Library
- Available September 2009
- Links to institutional repositories
- Self-archiving + central deposit





Simple Search **Advanced Search**

A word or phrase:

GO

Contains Exact Starts With

Browse NEER Collections

NEER Authors (4)

[Authors: A to E](#), [Authors: F to N](#), [Authors: O to Z](#)

NEER By Year (3)

[2006+](#), [2001-2005](#), [1996-2000](#) ...

NEER Institutions (3)

[Australian Catholic University](#), [Australian National University](#), [Bond University](#) ...

NEER Research Areas (2)

[Research Themes](#), [Research Clusters](#)



Search 'W-Publish Year= 2006 or 2007 or 2008 or 2009 or 2010' in 'Admin Unit NER01' Collection [Sorted by: Ranking]

Refine

Brief view **Table view** Full view

Sort by: Ranking

Records 1 - 2 of 2

1

Ranking	Title	Creator	Subject	Parent	Object	Actions
1	Building E-Research Infrastructures for Collaboration in Humanities Research Networks	Burrows, Toby Majocho, Elzbieta				
2	Finding Words to Embody Poverty: Continuities and Discontinuities in Word and Image from Piers Plowm	Scott, Anne M.	poverty middle ages			



AUSTRALIAN RESEARCH COUNCIL
NETWORK FOR EARLY
EUROPEAN RESEARCH

Europa Inventa

- A discovery service for Early European items in Australian collections: manuscripts, artworks, historic objects in museums, galleries, libraries
- Initial focus is on unique items and those with specific associations
- Link from descriptive catalogue records to digitized images held on the servers of the holding institutions (rather than storing copies of images centrally)
- The possibility of commissioning some digitization work in these institutions was envisaged in the original application
- Test Semantic Web and Web 2.0 approaches to the delivery of cultural heritage information



AUSTRALIAN RESEARCH COUNCIL
NETWORK FOR EARLY
EUROPEAN RESEARCH

Europa Inventa: size and scope

- **How many?** 300 medieval manuscripts, 1400 paintings and drawings.
- **Where?** All types of public cultural institutions: galleries, museums, libraries.
- **Listings?** Library catalogues, gallery & museum databases, printed catalogues (Sinclair, Manion & Vines)
- **Digitized?** To some extent, but exact proportion unknown.
- **Studied and written about?** Yes, but widely scattered in books and journals.



Tiepolo, *The Banquet of Cleopatra*

(National Gallery of Victoria)



Europa Inventa: processes

1. Import catalogue records from libraries, galleries, museums, archives
2. Normalize these records into consistent structures (CDWA Lite and TEI MS Description)
3. Make the database available for searching and browsing on the Web
4. Apply a consistent “names and concepts” framework: develop ontologies for describing Early European objects, concepts, places and events
5. Augment and enrich the records with links to more detailed descriptions and to secondary works
6. Make the database available for annotation by researchers



Dosso Dossi, Lucrezia Borgia (?)
(National Gallery of Victoria)

Record ID	Name of Creator	Vital Dates Creator	Nationality Creator	Attribution Qualifier	Title	Materials Techniques	Measurements	Object Work Type	Earliest Date	
10000	Master of the Uttenheim Altarpiece	born c.1450	Austrian		St. Martin of Tours and St. Nicholas of Bari	panel	76.2 x 67.3 cm	altarpiece		
10001	Platzer, Johann Georg	1704-1761	Austrian		The Sculptor's Studio	copper	47.5 x 64.7 cm	painting		Signed: J.F. Platzer
10002	Barker, Thomas, of Bath	1769-1847	British		The Coming Storm	canvas	59 x 71.8 cm	painting		
10007	Barret, George	1728 ?-1784	British		View of Windermere, Early Morning	canvas	149 x 240.5 cm	painting	1781	Signed: G. Barret 1781
10013	Beach, Thomas	1738-1806	British		George Damer, Viscount Milton	canvas	127.6 x 102.2 cm	painting	1795	Signed: T. Beach pinx/17
10023	Beechey, William, Sir	1753-1839	British		Mrs Jeremiah Ives (nee Crew) ?	canvas	29.8 x 22.9 cm	painting		
10024	Beechey, William, Sir	1753-1839	British		The Artist's Wife ?	canvas	125.7 x 93.3 cm (oval)	painting		
10025	Beechey, William, Sir	1753-1839	British		An Unknown Man	canvas	76.1 x 63.4 cm	painting		
10026	Browne, J.	active 1760s	British		Landscape with Salisbury Cathedral	canvas	63.2 x 78 cm	painting		Signed: J. Browne Pinx (

recordno	settlement	repository	idno	msName	support	extent	dimensions	collation	condition	layout	handDesc	
20001	Canberra	National Library of Australia	MS.1172	Psalterium	vellum	i + 111 folios	228 x 148 mm	(6)1, (8)2-4, (2)5, (7)6, (8)7-15. Quire 6 lacks its third sheet	Edges trimmed and with the lettering PSALMS	One col. of 23 lines (32 in Calendar)	English littera gothica textualis	Center over o edges. front c back c
20002	Canberra	National Library of Australia	MS.1508	Magna Carta	vellum	1 sheet	approx. 505 x 415 mm with a fold of 25 mm				a late 13c. English cursive court hand	
20003	Canberra	National Library of Australia	MS.1097/1	Biblia Vulgata	vellum, old paper fly-leaves (i-iv)	iv + 307	162 x 110 mm; fs. 256 and 274 fold out at the foot to accommodate notes	(13)1 (16)2-19 (6)20. Quire one lacks its first three sheets.	Edges trimmed and gilded	2 cols each of 51 to 54 lines	French littera gothica textualis	English board: rope e initials claspe green :
20004	Canberra	National Library of Australia	MS.1097/2	Horae (Use of Sarum)	vellum, fly leaves i and vi modern paper, ii, iii, iv and v old vellum	v + 166	140 x 95 mm	(12)1 (8)2-13 (6)14 (8)15-20 (4)21	Edges trimmed and gilded	one col. of 17 lines	English littera gothica textualis	15c. E stamp: monog dragon herald: two or moder



AUSTRALIAN RESEARCH COUNCIL
NETWORK FOR EARLY
EUROPEAN RESEARCH



Lessons learned & future plans

- University I.T. environments are complex
- Take-up by the research community varies
- Expectations of stakeholders need to be managed
- Need to link into global research framework
- Life after ARC funding?



AUSTRALIAN RESEARCH COUNCIL
NETWORK FOR EARLY
EUROPEAN RESEARCH

E-research and the humanities

- Do these services add up to e-research?
- How transformative are they?
- Beyond digital tools and scholarly Web sites?
- Carrying out research “in silico”
- The humanities and the “data-centred Web”
- Defining “research data” in the humanities
- Modelling research processes in the humanities



Rubens, *Self-portrait*
(National Gallery of
Australia)



AUSTRALIAN RESEARCH COUNCIL
NETWORK FOR EARLY
EUROPEAN RESEARCH

Further information

- NEER Web site <http://www.neer.arts.uwa.edu.au/>
- Confluence <http://confluence.arts.uwa.edu.au/>
- Toby Burrows Toby.Burrows@uwa.edu.au
- Claire McIlroy Claire.McIlroy@uwa.edu.au

