



Archived at the Flinders Academic Commons:

<http://dspace.flinders.edu.au/dspace/>

This is a copy of the published version of this article.

The original can be found at:

<http://journals.cambridge.org/action/displayAbstract?fromPage=online&aid=8877996>

Please cite this as: Villani, A.M., Miller, M., Cameron, I.D., Kurrle, S., Whitehead, C. and Crotty, M., 2012. Body composition in older community-dwelling adults with hip fracture: portable field methods validated by dual-energy X-ray absorptiometry. *British Journal of Nutrition*, 109(7), 1219-1229.

DOI: <http://dx.doi.org/10.1017/S0007114512003170>

©The Author(s), published by Cambridge University Press 2012. Published version of the paper reproduced here in accordance with the copyright policy of the publisher.

## Body composition in older community-dwelling adults with hip fracture: portable field methods validated by dual-energy X-ray absorptiometry

Anthony M. Villani<sup>1</sup>, Michelle Miller<sup>1\*</sup>, Ian D. Cameron<sup>2</sup>, Susan Kurrle<sup>3</sup>, Craig Whitehead<sup>4</sup> and Maria Crotty<sup>4</sup>

<sup>1</sup>Department of Nutrition and Dietetics, School of Medicine, Flinders University, GPO Box 2100, Adelaide, South Australia 5001, Australia

<sup>2</sup>Rehabilitation Studies Unit, University of Sydney, New South Wales, Australia

<sup>3</sup>Hornsby Ku-Ring-Gai Hospital, New South Wales, Australia

<sup>4</sup>Department of Rehabilitation and Aged Care, Flinders University, GPO Box 2100, Adelaide, South Australia 5001, Australia

(Submitted 11 November 2011 – Final revision received 15 June 2012 – Accepted 16 June 2012 – First published online 23 August 2012)

### Abstract

Ageing is associated with weight loss and subsequently poor health outcomes. The present study assessed agreement between two field methods, bioelectrical impedance spectroscopy (BIS) and corrected arm muscle area (CAMA) for assessment of body composition against dual-energy X-ray absorptiometry (DXA), the reference technique. Agreement between two predictive equations estimating skeletal muscle mass (SMM) from BIS against SMM from DXA was also determined. Assessments occurred at baseline <14 d post-surgery ( $n$  79), and at 6 months (6M;  $n$  75) and 12 months (12M;  $n$  63) in community-living older adults after surgical treatment for hip fracture. The 95% limits of agreement (LOA) between BIS and DXA, CAMA and DXA and the equations and DXA were assessed using Bland–Altman analyses. Mean bias and LOA for fat-free mass (FFM) between BIS and DXA were: baseline, 0.7 (–10.9, 12.4) kg; 6M, –0.5 (–20.7, 19.8) kg; 12M, 0.1 (–8.7, 8.9) kg and for SMM between CAMA and DXA were: baseline, 0.3 (–11.7, 12.3) kg; 6M, 1.3 (–4.5, 7.1) kg; 12M, 0.9 (–5.4, 7.2) kg. Equivalent data for predictive equations against DXA were: equation 1: baseline, 15.1 (–9.5, 20.6) kg; 6M, 17.1 (–12.0, 22.2) kg; 12M, 17.5 (–13.0, 22.0) kg; equation 2: baseline, 12.6 (–7.3, 19.9) kg; 6M, 14.4 (–9.7, 19.1) kg; 12M, 14.8 (–10.7, 18.9) kg. Proportional bias (BIS:  $\beta$  = –0.337,  $P$  < 0.001; CAMA:  $\beta$  = –0.294,  $P$  < 0.001) was present at baseline but not at 6M or 12M. Clinicians should be cautious in using these field methods to predict FFM and SMM, particularly in the acute care setting. New predictive equations would be beneficial.

**Key words:** Body composition: Older adults: Hip fracture: Dual-energy X-ray absorptiometry

Ageing is associated with changes in body composition and involuntary weight loss. Specifically, a large component of involuntary weight loss in older adults is fat-free mass (FFM) and is highly predictive of increased morbidity and mortality<sup>(1–3)</sup>. Losses in lean muscle occur at a rate of approximately 1–2% per year following the age of 50 years<sup>(4,5)</sup>. These losses are also correlated with a loss of skeletal muscle strength<sup>(4,6)</sup>. Sarcopenia, characterised by progressive and generalised loss of skeletal muscle mass (SMM) and strength associated with ageing, contributes to functional and physical disability, including poor quality of life<sup>(4,6,7)</sup>. The assessment of body composition, in particular SMM,

is therefore an important component of assessing health status in an ageing population.

Older adults with recent hip fractures are an important clinical group at increased risk of muscular disuse, declines in mobility and progressive disability<sup>(8)</sup>. This population of older adults often presents to hospitals with multiple co-morbidities and impairments which may impede functional recovery<sup>(9)</sup>. A number of predictors of poor functional outcomes have previously been reported; however, one important predictor that is often overlooked is insufficient dietary intake, in particular suboptimal protein status<sup>(10,11)</sup>. Malnutrition is often present upon hospital admission among hip fracture

**Abbreviations:** 6M, 6-month; 12M, 12-month; BIS, bioelectrical impedance spectroscopy; CAMA, corrected arm muscle area; DXA, dual-energy X-ray absorptiometry; ECW, extracellular water; FFM, fat-free mass; FM, fat mass; ICW, intracellular water; LOA, limits of agreement; MUAC, mid-upper arm circumference; SMM, skeletal muscle mass; TBW, total body water; TSF, triceps skinfold thickness.

\* **Corresponding author:** Associate Professor Michelle Miller, email [michelle.miller@flinders.edu.au](mailto:michelle.miller@flinders.edu.au)

patients (reported up to 63%)<sup>(10–12)</sup>, which often worsens throughout the admission<sup>(13)</sup>. The subsequent changes in body composition that occur, however, are not well defined.

The assessment of body composition plays an important role in the nutritional management of older adults after surgical treatment for hip fracture. The potential for losses in lean mass within this population post-surgery raises the need for non-invasive, easy alternatives for the assessment of body composition. Dual-energy X-ray absorptiometry (DXA) is a non-invasive, safe, accurate and reliable method of body composition assessment in research and clinical practice<sup>(14–16)</sup>. Whilst first developed for the assessment of bone mineral density, DXA also provides an assessment of total and regional body fat and FFM<sup>(14,17)</sup>. For this reason, DXA is commonly used as a reference technique for the assessment of body composition. However, its high cost, lack of access, and the difficulty of positioning post-surgical patients in the correct position for measurement secondary to pain and immobility makes this method not always practical for older adults recovering from orthopaedic surgery<sup>(16)</sup>. Therefore the need for portable methods of body composition assessment is of clinical importance.

Despite a variety of field methods available to assess body composition in older adults, the majority of findings have been inconsistent and few methods have been validated. A recent cross-sectional analysis by Vilaça *et al.*<sup>(18)</sup> showed that bioelectrical impedance analysis, when compared with DXA, tended to overestimate FFM in undernourished older adults. In contrast, Tengvall *et al.*<sup>(19)</sup> showed that in a healthy population of community-dwelling older adults, FFM derived from bioelectrical impedance spectroscopy (BIS) was in agreement with FFM from DXA. Results, however, taken from studies using healthy populations cannot necessarily be generalised to frail older adults or those with chronic disease. Validation studies among older adults recovering from hip fracture are scant. A recent small ( $n$  23) Australian study investigated the validity of sex-specific predictive equations for lean body weight against FFM derived from DXA in elderly women post-surgery for hip fracture<sup>(20)</sup>. These results highlighted that the lean body weight predictive equation used in this study underestimated FFM by 0.59 (95% limits of agreement (LOA)  $-8.11$ ,  $9.29$ ) kg when compared with DXA, with marked individual variability and poor precision.

The objective of the present measurement study was to assess the agreement of two field methods, BIS and corrected arm muscle area (CAMA), against a reference technique, DXA, for the assessment of FFM and SMM in older males and females after surgical fixation for hip fracture. Furthermore, the present study also explored agreement between two previously established regression equations from BIS to predict SMM against SMM derived from DXA.

## Methods

### *Patients and recruitment*

A cross-sectional measurement study was performed as part of the Individual Nutrition Therapy and Exercise Regime:

A Controlled Trial of Injured, Vulnerable Elderly (INTERACTIVE) trial (Australian Clinical Trials Registry no. 12607000017426), a prospective randomised controlled trial of a nutrition and exercise programme in community-dwelling older adults post-surgical fixation for hip fracture<sup>(21)</sup>. Body composition data were collected at baseline ( $<14$  d post-surgery), and at 6 months (6M) and 12 months (12M) following surgery. Participants were recruited from two acute care settings including Flinders Medical Centre and Flinders Private Hospital, both in Adelaide, South Australia, Australia<sup>(21)</sup>.

Participants aged  $\geq 65$  years were eligible for the study if they were admitted with a diagnosis of hip fracture confirmed by radiology report, had a Mini Mental State Examination score of  $\geq 18$ , had a BMI between  $18.5$  kg/m<sup>2</sup> and  $35$  kg/m<sup>2</sup>, and were community-dwelling within existing local service boundaries. Exclusion criteria included a pathological fracture or malignancy, those residing in residential care, non-English speaking, limited to stand transfers only post-surgery, or non-ambulatory pre-fracture due to potential allocation to an exercise programme requiring independent mobility, unable to provide informed consent or not deemed to be medically stable within 14 d post-surgery (for example, unstable blood glucose levels, elevated blood pressure and unstable angina). The present study was conducted according to the guidelines laid down in the Declaration of Helsinki and all procedures involving human subjects were approved by the Flinders Clinical Research Ethics Committee (protocol 110/067). Written informed consent was obtained from all subjects.

### *Measurements and procedures*

Body composition and clinical measurements were collected at three different time points: baseline (within 14 d post-surgery), and at 6 months (6M) and 12 months (12M) post-surgery. A detailed description of all outcome measures has previously been published<sup>(21)</sup>. For the purposes of the present study, the primary measurements of interest were body composition parameters including FFM and SMM derived from BIS and CAMA, respectively, as well as FFM and SMM measures from DXA, the reference technique. Subgroup analyses were also performed separating sex and BMI (BMI  $\geq 22$  kg/m<sup>2</sup>; BMI  $< 22$  kg/m<sup>2</sup>). Analyses for BMI were separated using  $< 22$  kg/m<sup>2</sup> (underweight or 'at risk' of underweight and malnutrition) *v.*  $\geq 22$  kg/m<sup>2</sup> (desirable)<sup>(22,23)</sup>.

### *Body composition measurements*

**Weight and height.** Body weight was recorded to the nearest 0.1 kg using calibrated digital scales (BF-681 Scale and Body Fat Monitor; Tanita) with participants wearing light clothing and without footwear. Participants were assisted onto digital scales with assistance from walking support aids and clinical nurses and/or physiotherapists where required. Participants that were unable to mobilise were weighed using a calibrated weigh chair.

Height was estimated using validated age- and sex-specific equations<sup>(24,25)</sup>. Knee height is commonly used among older adults as a result of degenerative changes that occur in stature

with age, making it difficult to obtain an accurate standing height, consequently making the calculation of BMI prone to error<sup>(25)</sup>. Knee height was measured on the non-injured leg with participants wearing no footwear. The measurement took place either with the participant in a supine position or in a seated position, with the ankle, knee and tibia-tarsus joints flexed at 90° using a calibrated knee height calliper (Ross Laboratories) with the fixed portion of the calliper placed along the lateral tibial condyle and the lateral malleolus. All measures were recorded to the nearest 0.1 cm. BMI was calculated as weight (kg) divided by the square of height (m<sup>2</sup>).

**Dual-energy X-ray absorptiometry.** Whole-body and regional body composition was estimated using DXA (Lunar Prodigy; GE Healthcare) with the automated reporting GE EnCORE bone densitometry software (version 10.51.006). The system software provided estimates of FFM, lean soft tissue, fat mass (FM) and bone mineral density for total body and body segments including both arms, both legs and the trunk. Appendicular lean soft tissue (ALST) mass, calculated as the sum of lean soft tissue mass in both arms and legs, was used to determine SMM using previously established equations<sup>(26)</sup>.

The equation for estimating SMM from DXA is:

$$\text{SMM} = (1.13 \times \text{ALST}) - (0.02 \times \text{age}) + (0.61 \times \text{sex}) + 0.97.$$

Measurements of FFM and FM using DXA have previously been validated in an elderly population with an explained variance >96%<sup>(27,28)</sup>. The precision of measures using the Lunar Prodigy system by repeated measurements across four successive days has previously been reported with CV (%) of 1% for FFM and 2% for FM<sup>(29)</sup>. In this scanning technique an X-ray generator emits alternating pulsed radiation of two photon energy peaks, 38 KeV and 70 KeV in a fan-beam mode. Quality-assurance and quality-control measures were performed three times per week throughout the duration of the trial and before all participant scans using a body composition phantom block containing a known bone mineral density and bone mineral content value. A tolerance for the densitometer was established from the mean of the phantom BMD by monitoring the densitometer's performance, using ±1.5% as the acceptable tolerable limit. All DXA scans were performed by a licensed technician. Before all DXA scans, all participants underwent a DXA screening checklist to ensure safety and validity of the technique. Participants were excluded from the DXA scan if they reported a history of nuclear scans or other X-ray examinations in the previous 0–14 d or had a recorded body weight ≥130 kg. Before the scan, all participants were asked to remove all metal accessories, were asked to identify any medications taken in the previous 24 h (including Ca or Fe supplements) and were asked to identify any history of previous fracture and/or metal implants. The software recognises metal in the body, such as artificial joints, allowing exclusion from calculations before analysis. Participants were dressed in hospital gowns and positioned in a supine position on the tabletop with their feet in a neutral position with hands flat by their sides.

**Corrected arm muscle area.** CAMA is a portable anthropometric technique that may be used to identify malnutrition in an elderly population, and is a useful indicator of nutritional status in this population<sup>(30,31)</sup>. CAMA is calculated using equations that take into account mid-upper arm circumference (MUAC) and triceps skinfold thickness (TSF)<sup>(30–32)</sup>. MUAC was measured at the mid-point between acromiale and radiale to the nearest 0.1 cm using a flexible steel measuring tape (KDS Corp.) with the tape positioned perpendicular to the long axis of the humerus. TSF was measured at the marked posterior mid-acromiale-radiale to the nearest 0.2 mm using a calibrated Harpenden skinfold calliper (Baty International) with the skinfold taken vertically and parallel to the marked posterior mid-acromiale-radiale line. TSF measurements were taken at the same level as MUAC on the posterior surface of the right arm, over the long head of the triceps. All anthropometric measures were performed by trained dietitians and/or physiotherapists, with each measure performed on three separate occasions with the mean of the three measures used for analysis. Unless affected by injury, all anthropometric measures were taken on the right-hand side of the body. CAMA was derived from MUAC and TSF and converted to SMM (kg) using previously established equations outlined below, which are used to correct for non-skeletal muscle tissue and the asymmetric shape of the mid-upper-arm muscle compartment<sup>(30,32)</sup>.

Equation(s) for estimating SMM from CAMA are:

$$\begin{aligned} \text{(a) Men : CAMA (cm}^2\text{)} \\ &= (\text{MUAC (cm)} - \pi \times \text{TSF (cm)})^2 / 4\pi - 10; \end{aligned}$$

$$\begin{aligned} \text{(b) Women : CAMA (cm}^2\text{)} \\ &= (\text{MUAC (cm)} - \pi \times \text{TSF (cm)})^2 / 4\pi - 6.5. \end{aligned}$$

$$\text{Estimation of SMM (kg)} = \text{ht (cm}^2\text{)} (0.0264 + 0.0029 (\text{CAMA})).$$

**Bioelectrical impedance spectroscopy.** The assessment of FFM by BIS was carried out using the ImpediMed Imp SFB7. The ImpediMed measures current, voltage and phase angle and calculates impedance, resistance and reactance, which are used to assess components of body composition including FFM, FM, total body water (TBW), intracellular water (ICW) and extracellular water (ECW). Measurements were taken with participants rested in a supine position. Electrodes were placed on the dorsal surface of the right side of the body, specifically, between the protruding bones on the wrist and ankle, according to the manufacturer's instructions. All measures were taken with participants in a fasted state. TBW, ICW and ECW were measured using the BIS proprietary software and FFM was determined using the formula  $\text{FFM} = \text{TBW} / 0.73$ . TBW is present entirely within the FFM compartment of the body and it is assumed, under the classical approach for estimating FFM, that FFM has a hydration factor of 0.73<sup>(33,34)</sup>. The volume of TBW was calculated as the sum of ECW and ICW.

**Estimation of skeletal muscle mass using bioelectrical impedance spectroscopy equations.** BIS was used to estimate SMM using two predictive equations previously

derived from BIS (one using body weight and one without) established by Tengvall *et al.*<sup>(19)</sup> on a sample of ninety-eight community-dwelling older adults aged  $\geq 75$  years.

Equations for estimating SMM from BIS are:

$$(1) \text{SMM}_{\text{BW}} = -23.953 + (0.333 \times \text{Ht}) + (-0.004 \times \text{Ri}) \\ + (-0.010 \times \text{Re}) + (-1.727 \times \text{sex}) + (0.042 \times \text{BW});$$

$$(2) \text{SMM}_{\text{noBW}} = -24.05 + (0.365 \times \text{Ht}) + (-0.005 \times \text{Ri}) \\ + (-0.012 \times \text{Re}) + (-1.337 \times \text{sex}),$$

where Ht is height in cm, Ri is intracellular resistance, Re is extracellular resistance, sex = 1 for women and = 0 for men, and BW is body weight.

### Statistical analysis

Analyses were performed using SPSS for Windows 17.0 software (SPSS Inc.). Significance was set at  $P < 0.05$ . Descriptive statistics were calculated for weight, BMI, SMMDXA, SMMCAMA, FFMDXA, FFMBIS and SMM from the predictive equations and expressed as mean values and standard deviations. Paired *t* tests were conducted to explore differences between field methods, the predictive equations and DXA for the assessment of FMM and SMM at each time point. Spearman's correlation coefficients were calculated to explore the association between the field methods of body composition assessment and DXA. The mean bias between body composition field methods, the predictive equations and DXA were

assessed by paired *t* test. Repeated-measures ANOVA were conducted to explore changes in the mean bias between field methods, the predictive equations and DXA across each assessment time point. The LOA between body composition field methods, the predictive equations and DXA were assessed using the technique described by Bland & Altman<sup>(35,36)</sup>. In this technique, the difference between a given body composition field method and DXA was plotted along the vertical axis against the mean of the two measures on the horizontal axis where the aim was to describe the variability in agreement between the two measures<sup>(36,37)</sup>. Assuming a normal distribution of differences, theoretically, 95% of the differences are expected to be within  $\pm 2$  SD<sup>(36,37)</sup>. Linear regression analyses were conducted to identify whether the regression line was significantly different to zero<sup>(36)</sup>.

## Results

### Descriptive statistics

DXA results were available on seventy-nine participants at baseline (twenty-three males and fifty-six females), seventy-five participants at the 6-month (6M) assessment (twenty males and fifty-five females) and sixty-three participants at the 12-month (12M) assessment (sixteen males and forty-seven females). The mean age of participants at baseline was 82.7 (SD 5.9) years (males 81.5 (SD 6.4) years; females 83.1 (SD 5.7) years). Mean weight, BMI, SMMDXA, FFMDXA, SMMCAMA, FFMBIS and SMM from the predictive equations at each study time point (baseline, 6M and 12M) are

**Table 1.** Anthropometric characteristics at baseline and at 6 and 12 months after hip fracture in male and female participants

(Mean values and standard deviations)

Characteristic	Baseline		6 months		12 months	
	Mean	SD	Mean	SD	Mean	SD
<b>Males</b>						
Subjects ( <i>n</i> )	23		30		16	
Weight (kg)	75.6	16.5	75.2	17.0	74.9	17.7
BMI (kg/m <sup>2</sup> )	24.9	3.7	24.8	4.1	24.6	4.2
SMMDXA (kg)	23.1*	4.3	22.0	4.7	21.1	4.9
FFMDXA (kg)	53.1	9.7	51.6*	6.4	50.7	9.4
SMMCAMA (kg)	21.0*	3.9	22.3	4.3	20.7	5.8
FFMBIS (kg)	52.6	13.1	44.4*	8.3	48.5	12.3
Tengvall <i>et al.</i> equation 1 (kg) <sup>(19)†</sup>	39.3*	2.7	39.2*	2.7	39.2*	2.9
Tengvall <i>et al.</i> equation 2 (kg) <sup>(19)‡</sup>	37.2*	2.9	36.9*	3.1	36.9*	3.3
<b>Females</b>						
Subjects ( <i>n</i> )	56		55		47	
Weight (kg)	62.9	12.0	60.5	11.0	61.5	11.6
BMI (kg/m <sup>2</sup> )	25.0	4.0	24.1	3.8	24.5	4.0
SMMDXA (kg)	17.3	3.2	15.2*	2.2	15.3*	2.4
FFMDXA (kg)	39.6	4.8	37.9	4.6	37.7	3.6
SMMCAMA (kg)	18.7	6.5	16.9*	3.1	16.7*	3.2
FFMBIS (kg)	40.7	7.8	39.3	9.1	38.5	5.4
Tengvall <i>et al.</i> equation 1 (kg) <sup>(19)†</sup>	31.7*	2.1	31.9*	2.1	32.0*	2.1
Tengvall <i>et al.</i> equation 2 (kg) <sup>(19)‡</sup>	29.0*	2.3	29.2*	2.2	29.3*	2.2

SMM, skeletal muscle mass; DXA, dual-energy X-ray absorptiometry; FFM, fat-free mass; CAMA, corrected arm muscle area; BIS, bioelectrical impedance spectroscopy.

\* Significant differences in the mean values for SMM and FFM between field methods, predictive equations and DXA assessed by paired *t* test ( $P < 0.05$ ).

† Tengvall *et al.* equation 1 excludes body weight as a predictor of SMM in the regression model.

‡ Tengvall *et al.* equation 2 includes body weight as a predictor of SMM in the regression model.

highlighted in Table 1. Significant differences between field methods, the predictive equations and DXA for the estimation of FFM and SMM at each study time point are also highlighted in Table 1.

*Measures of agreement*

At baseline, 6M and 12M, Bland–Altman analyses illustrated a mean bias of 0.7 (95% LOA -10.9, 12.4), -0.5 (95% LOA -20.7, 19.8) and 0.1 (95% LOA -8.7, 8.9) kg, respectively, for the assessment of FFMBIS when compared against FFMDXA (Table 2). No significant changes were observed in the mean bias between FFMDXA and FFMBIS across each assessment time point ( $P=0.779$ ). However, when included as an independent covariate, sex had an influence on change in the mean bias over time ( $P=0.007$ ). The influence of BMI had no effect on change in the mean bias ( $P=0.192$ ). Linear regression analyses identified significant proportional bias between FFMDXA and FFMBIS ( $\beta = -0.337$ ;  $P=0.04$ ) at baseline only (Fig. 1).

At each assessment time point, SMMCAMA overestimated SMM from DXA. At baseline, 6M and 12M, a mean bias of 0.3 (95% LOA -11.7, 12.3), 1.3 (95% LOA -4.5, 7.1) and 0.9 (95% LOA -5.4, 7.2) kg was observed (Table 2). Similarly, there were no significant changes in the mean bias between SMMDXA and SMMCAMA across each assessment time point ( $P=0.174$ ). The influence of sex and BMI had no effect on change in the mean bias (sex,  $P=0.639$ ; BMI,  $P=0.518$ ). Similarly, significant proportional bias was observed at baseline only between SMMDXA and SMMCAMA ( $\beta = -0.294$ ;  $P=0.01$ ) (Fig. 2).

Estimates of SMM from both predictive equations also overestimated SMM from DXA at each assessment time point (equation 1: baseline, 15.1 kg; 6M, 17.1 kg; 12M, 17.5 kg; equation 2: baseline, 12.6 kg; 6M, 14.4 kg; 12M, 14.8 kg)

(Table 2). Significant changes were observed in the mean bias across each assessment time point for both predictive equations (equation 1,  $P=0.002$ ; equation 2,  $P=0.001$ ). Significant proportional bias was observed at baseline between SMMDXA and predictive equation 1 ( $\beta = 0.311$ ;  $P=0.05$ ) and at 6M between SMMDXA and predictive equation 2 ( $\beta = 0.266$ ;  $P=0.05$ ).

Sex-specific analyses are presented in Table 3. FFMBIS in males consistently underestimated FFM from DXA (male: baseline, -0.4 kg; 6M, -7.1 kg; 12M, -2.2 kg). Compared with FFMBIS, the mean bias and 95% LOA for SMMCAMA were smaller and narrower among males (Table 3). Significant proportional bias was observed in males for the assessment of FFMBIS only at baseline ( $\beta = -0.678$ ;  $P<0.01$ ) and 12M ( $\beta = -0.568$ ;  $P<0.04$ ). In females, FFMBIS and SMMCAMA overestimated FFM and SMM from DXA (FFMBIS: baseline, 1.3 kg; 6M, 1.5 kg; 12M, 0.9 kg; SMMCAMA: baseline, 1.3 kg; 6M, 1.7 kg; 12M, 1.3 kg). A clear pattern in the 95% LOA was observed for the assessment of SMMCAMA, with LOA narrowing at 6M and 12M relative to baseline (Table 3). Significant proportional bias was observed in females for the assessment of FFMBIS and SMMCAMA at baseline (FFMBIS:  $\beta = -0.528$ ,  $P=0.006$ ; SMMCAMA:  $\beta = -0.612$ ,  $P<0.001$ ), 6M (FFMBIS:  $\beta = -0.588$ ,  $P<0.001$ ; SMMCAMA:  $\beta = -0.381$ ,  $P=0.007$ ) and 12M (FFMBIS:  $\beta = -0.479$ ,  $P=0.002$ ; SMMCAMA:  $\beta = -0.305$ ,  $P=0.05$ ).

BMI-specific analyses are presented in Table 4. For participants with BMI <22 kg/m<sup>2</sup>, FFMBIS underestimated FFM from DXA (BMI <22 kg/m<sup>2</sup>: baseline, -3.0 kg; 6M, -0.4 kg; 12M, -2.9 kg) (Table 4). For the assessment of SMMCAMA, the mean bias was smaller and the 95% LOA were narrower (with the exception of baseline) at each assessment time point (Table 4). Significant proportional bias was present for the assessment of FFMBIS and SMMCAMA at baseline (SMMCAMA:  $\beta = -0.706$ ;  $P=0.01$ ) and 6M (FFMBIS:  $\beta = -0.636$ ;

**Table 2.** Correlations and 95% limits of agreement (LOA) between dual-energy X-ray absorptiometry (DXA), a reference technique, and field methods for the assessment of fat-free mass (FFM) and skeletal muscle mass (SMM) at baseline, and at 6 and 12 months post-hip fracture

Study time point	Body composition field method	r†	P	Mean bias (kg)‡	95% LOA (kg)§	β
Baseline¶	FFMBIS	0.764	<0.001	0.7	-10.9, 12.4	-0.337*
Baseline	SMMCAMA	0.469	<0.001	0.3	-11.7, 12.3	-0.294*
Baseline	Tengvall <i>et al.</i> equation 1††	0.733	<0.001	15.1	-9.5, 20.6	0.311*
Baseline	Tengvall <i>et al.</i> equation 2‡‡	0.761	<0.001	12.6	-7.3, 19.9	0.225
6 months¶	FFMBIS	0.386	0.004	-0.5	-20.7, 19.8	-0.176
6 months	SMMCAMA	0.651	<0.001	1.3	-4.5, 7.1	0.037
6 months	Tengvall <i>et al.</i> equation 1††	0.676	<0.001	17.1	-12.0, 22.2	0.183
6 months	Tengvall <i>et al.</i> equation 2‡‡	0.715	<0.001	14.4	-9.7, 19.1	0.266*
12 months¶	FFMBIS	0.753	<0.001	0.1	-8.7, 8.9	-0.187
12 months	SMMCAMA	0.570	<0.001	0.9	-5.4, 7.2	-0.087
12 months	Tengvall <i>et al.</i> equation 1††	0.638	<0.001	17.5	-13.0, 22.0	-0.084
12 months	Tengvall <i>et al.</i> equation 2‡‡	0.710	<0.001	14.8	-10.7, 18.9	0.009

BIS, bioelectrical impedance spectroscopy; CAMA, corrected arm muscle area.

\* Significant proportional bias ( $P<0.05$ ).

† Association between body composition field methods, predictive equations and DXA assessed by Spearman correlation analyses ( $P<0.05$ ).

‡ Mean bias between body composition field methods, predictive equations and DXA assessed by paired *t* test.

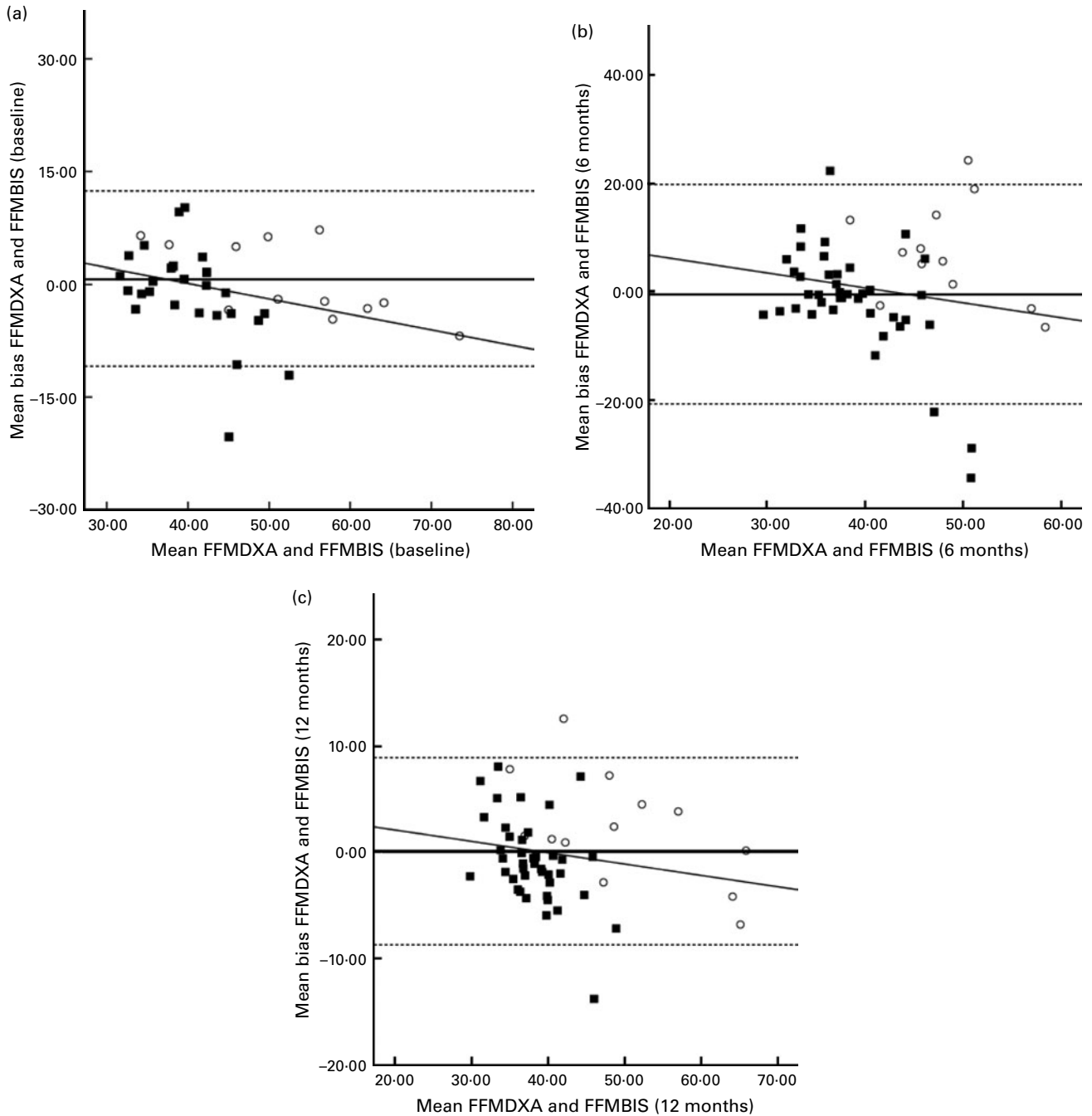
§ 95% LOA indicates the mean difference between body composition field methods, predictive equations and DXA  $\pm 1.96$ .

|| Proportional bias in the mean difference between body composition field methods, predictive equations and DXA assessed by linear regression analyses.

¶ Study sample size at each assessment time point: baseline, *n* 79; 6 months, *n* 75; 12 months, *n* 63.

†† Tengvall *et al.* equation 1 excludes body weight as a predictor of SMM in the regression model.

‡‡ Tengvall *et al.* equation 2 includes body weight as a predictor of SMM in the regression model.

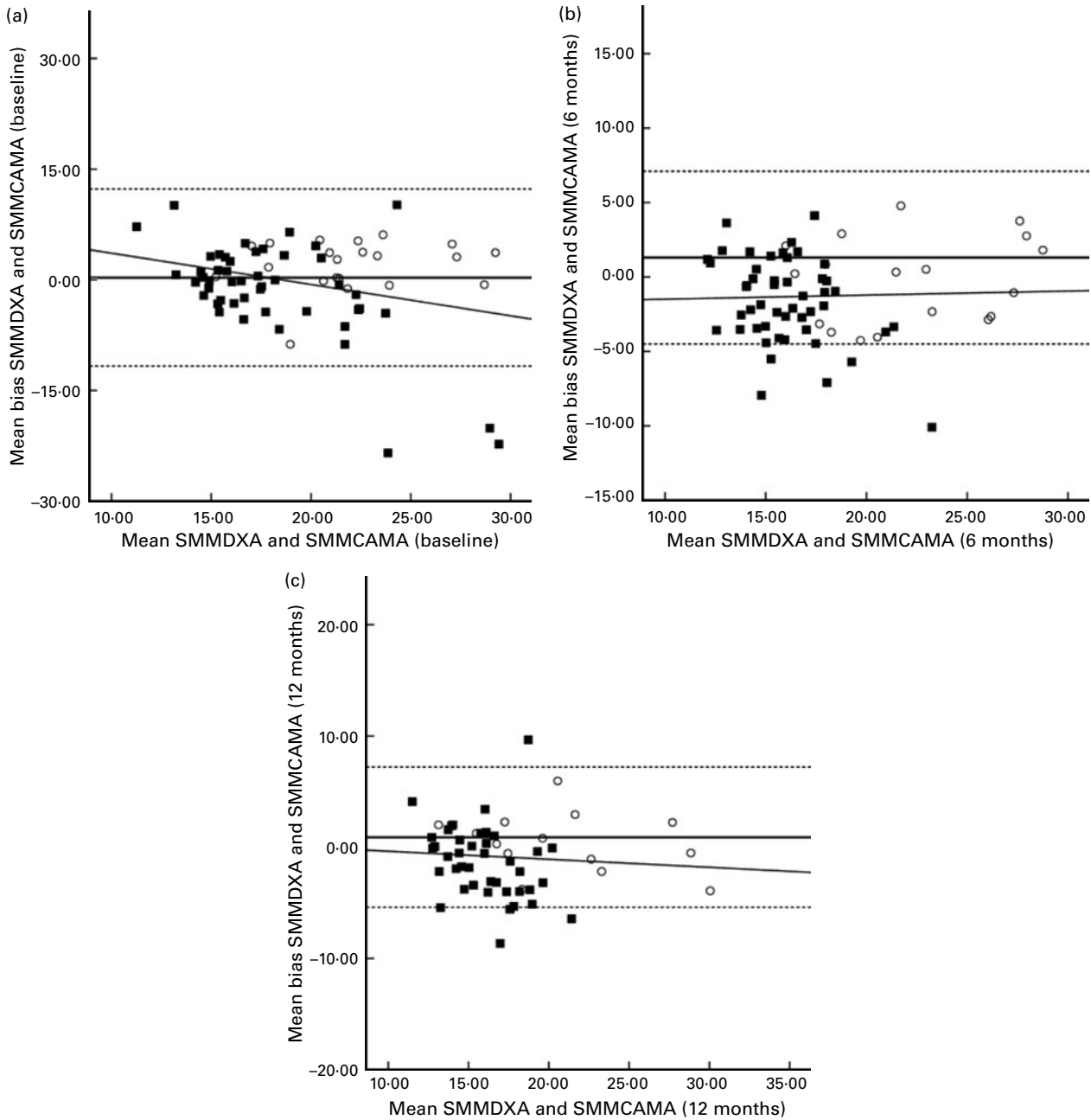


**Fig. 1.** Bland–Altman plots: mean bias and 95% limits of agreement for the assessment of fat-free mass (FFM) by bioelectrical impedance spectroscopy (BIS) and FFM by dual-energy X-ray absorptiometry (DXA), the reference technique. Body composition data were collected from males (○) and females (■) at baseline (a) (males, *n* 23; females, *n* 56) and at 6 months (b) (males, *n* 20; females, *n* 53) and 12 months (c) (males, *n* 16; females, *n* 47) post-surgery for hip fracture. (–), Mean difference between DXA and BIS; (– –), 95% limits of agreement ( $\pm 1.96$  sd) between the two measures. The line of regression is highlighted by the slope-intercept on the y-axis.

$P=0.01$ ). For participants with  $BMI \geq 22 \text{ kg/m}^2$ , FFMBIS overestimated FFM from DXA at baseline and 12M ( $BMI \geq 22 \text{ kg/m}^2$ : baseline, 1.4 kg; 6M, -0.6 kg; 12M, 1.4 kg) with the 95% LOA wide, narrowing at 12M (Table 4). SMMCAMA overestimated SMM from DXA at all study time points ( $BMI \geq 22 \text{ kg/m}^2$ : baseline, 0.6 kg; 6M, 1.5 kg; 12M, 1.4 kg) with the 95% LOA progressively narrowing from baseline (Table 4).

### Discussion

The present measurement study explored bias and LOA between two portable body composition assessment methods (BIS and CAMA) against a reference technique (DXA) in older adults after surgical fixation for hip fracture. According to the findings of the present study, both field methods were deemed unsuitable for use as a predictor of body composition



**Fig. 2.** Bland–Altman plots: mean bias and 95% limits of agreement for the assessment of skeletal muscle mass (SMM) by corrected arm muscle area (CAMA) and SMM by dual-energy X-ray absorptiometry (DXA), the reference technique. Body composition data were collected from males (○) and females (■) at baseline (a) (males, *n* 23; females, *n* 56) and at 6 months (b) (males, *n* 20; females, *n* 53) and 12 months (c) (males, *n* 16; females, *n* 47) post-surgery for hip fracture. (–), Mean difference between DXA and CAMA. (– –), 95% limits of agreement ( $\pm 1.96$  sd) between the two measures. The line of regression is highlighted by the slope-intercept on the y-axis.

at the individual level within a clinical setting; however, they may be of use at the population level. Moreover, we also found the use of two previously established predictive equations inappropriate for application as a predictor of SMM in older adults post-surgery for hip fracture.

While much is known about the validity of body composition methods in healthy adult populations, studies investigating the validity of body composition assessment techniques in the clinical setting, such as in orthopaedic

patients, are rare. The investigation of non-elective orthopaedic cases and body composition assessment is gaining momentum in the literature. In 2010, an Australian study was published which explored body composition amongst female hip fracture patients through comparison of measured body composition using DXA against a predictive equation derived from a healthy population aged 18–82 years<sup>(20,38,39)</sup>. Not surprisingly, the authors of this study determined that the predictive equation was inappropriate for application



**Table 3.** Correlations and 95 % limits of agreement (LOA) between dual-energy X-ray absorptiometry (DXA), a reference technique, and field methods for the assessment of fat-free mass (FFM) and skeletal muscle mass (SMM) at baseline, and at 6 and 12 months post-hip fracture in male and female participants

Study time point	Body composition field methods	$r$ †	$P$	Mean bias (kg)‡	95 % LOA (kg)§	$\beta$
<b>Males</b>						
Baseline¶	FFMBIS	0.949	<0.001	-0.4	-10.4, 9.5	-0.678*
Baseline	SMMCAMA	0.601	0.004	-2.0	-8.7, 4.7	0.149
6 months¶	FFMBIS	0.146	0.652	-7.1	-25.3, 11.1	-0.268
6 months	SMMCAMA	0.816	<0.001	0.2	-5.5, 5.8	0.166
12 months¶	FFMBIS	0.879	<0.001	-2.2	-12.4, 8.0	-0.568*
12 months	SMMCAMA	0.776	0.001	-0.4	-5.7, 4.9	-0.295
<b>Females</b>						
Baseline¶	FFMBIS	0.588	0.002	1.3	-11.0, 13.6	-0.528*
Baseline	SMMCAMA	0.325	0.02	1.3	-12.0, 14.6	-0.612*
6 months¶	FFMBIS	0.251	0.114	1.5	-17.9, 20.9	-0.588*
6 months	SMMCAMA	0.434	0.002	1.7	-4.0, 7.4	-0.381*
12 months¶	FFMBIS	0.713	<0.001	0.9	-7.1, 8.9	-0.479*
12 months	SMMCAMA	0.418	0.01	1.3	-5.2, 7.8	-0.305*

BIS, bioelectrical impedance spectroscopy; CAMA, corrected arm muscle area.

\* Significant proportional bias ( $P < 0.05$ ).

† Association between body composition field methods and DXA assessed by Spearman correlation analyses ( $P < 0.05$ ).

‡ Mean bias between body composition field methods and DXA assessed by paired  $t$  test.

§ 95 % LOA indicates the mean difference between body composition field methods and DXA  $\pm 1.96$ .

|| Proportional bias in the mean difference between body composition field methods and DXA assessed by linear regression analyses.

¶ Study sample size at each assessment time point. Males: baseline,  $n$  23; 6 months,  $n$  20; 12 months,  $n$  16. Females: baseline,  $n$  56; 6 months,  $n$  55; 12 months,  $n$  47.

with older adults following hip fracture, with a mean bias of  $-0.59$  (95 % LOA  $-8.11, 9.29$ ) kg<sup>(20)</sup>. Similar to the present study, Mitchell *et al.*<sup>(20)</sup> reported on data at independent time points throughout recovery (baseline, 4 months, 12 months) and found that validity improved over time. We also showed poor agreement for both field methods at baseline (including significant proportional bias), being hence inappropriate for use at the individual level, with LOA being most narrow yet still unacceptable at 12 months following surgery.

Unlike the study reported by Mitchell *et al.*<sup>(20)</sup>, the present study included both males and females. Interestingly, in the

present study, FFMBIS overestimated FFM from DXA at each study time point for females; however, in males the trend was for FFMBIS to underestimate FFM from DXA. We also showed that sex independently influenced change in the mean bias across each assessment time point between FFMDXA and FFMBIS. This is an important consideration for practitioners, as the generic application of equations generated using a sample of a single sex only is likely to be inappropriate. While there is insufficient data amongst hip fracture patients to confirm this, a previous study reporting on a large cohort of middle-aged males and females showed that the distribution of TBW varies

**Table 4.** Correlations and 95 % limits of agreement (LOA) between dual-energy X-ray absorptiometry (DXA), a reference technique, and field methods for the assessment of fat-free mass (FFM) and skeletal muscle mass (SMM) at baseline, and at 6 and 12 months post-hip fracture, separated by BMI (kg/m<sup>2</sup>)

Study time point	Body composition field method	$r$ †	$P$	Mean bias (kg)‡	95 % LOA (kg)§	$\beta$
<b>BMI &lt; 22 kg/m<sup>2</sup></b>						
Baseline¶	FFMBIS	0.829	0.04	-3.0	-12.2, 6.2	-0.689
Baseline	SMMCAMA	0.445	0.170	-1.0	-17.5, 16.5	-0.706*
6 months¶	FFMBIS	0.638	0.01	-0.4	-18.5, 18.4	-0.636*
6 months	SMMCAMA	0.158	0.531	0.7	-5.2, 6.6	-0.074
12 months¶	FFMBIS	0.406	0.118	-2.9	-10.3, 6.1	0.064
12 months	SMMCAMA	0.602	0.01	-0.1	-5.2, 5.0	0.074
<b>BMI <math>\geq</math> 22 kg/m<sup>2</sup></b>						
Baseline¶	FFMBIS	0.770	<0.001	1.4	-10.4, 13.2	-0.292
Baseline	SMMCAMA	0.479	<0.001	0.6	-10.6, 11.8	-0.162
6 months¶	FFMBIS	0.316	0.04	-0.6	-21.6, 20.4	-0.083
6 months	SMMCAMA	0.717	<0.001	1.5	-4.2, 7.2	0.125
12 months¶	FFMBIS	0.850	<0.001	1.4	-9.1, 9.0	-0.092
12 months	SMMCAMA	0.504	0.001	1.4	-5.3, 8.1	-0.016

BIS, bioelectrical impedance spectroscopy; CAMA, corrected arm muscle area.

\* Significant proportional bias ( $P < 0.05$ ).

† Association between body composition field methods and DXA assessed by Spearman correlation analyses ( $P < 0.05$ ).

‡ Mean bias between body composition field methods and DXA assessed by paired  $t$  test.

§ 95 % LOA indicates the mean difference between body composition field methods and DXA  $\pm 1.96$ .

|| Proportional bias in the mean difference between body composition field methods and DXA assessed by linear regression analyses.

¶ Study sample size at each assessment time point. BMI < 22 kg/m<sup>2</sup>: baseline,  $n$  11; 6 months,  $n$  18; 12 months,  $n$  18. BMI  $\geq$  22 kg/m<sup>2</sup>: baseline,  $n$  68; 6 months,  $n$  57; 12 months,  $n$  45.

between sex and with body composition<sup>(40)</sup>. Ritz *et al.*<sup>(40)</sup> showed that with increasing BMI, TBW makes a significantly lower proportion to body weight with women having less water per kg body weight relative to males.

Although it is impossible to determine a causative explanation for the potential for bias between our measurements of FFMBIS and FFMDXA, one explanation may be the lack of validity of BIS measurements in members of an ageing population that have undergone an acute injury and have multiple co-morbidities, including malnutrition. Although BIS models and equations have previously been shown to be accurate in healthy populations<sup>(41,42)</sup>, these equations are often specific to the population that they were derived from. Disturbances in hydration and electrolyte status among older adults in an acute hospital setting may also have been a contributing factor to the large individual variation shown, particularly at baseline. Dehydration is a common occurrence in frail elderly hospitalised patients<sup>(43)</sup>. Consequently, an increase in the ECW:ICW ratio may result in a surplus of fluid, particularly in malnourished patients where the ICW volume may be lower<sup>(43,44)</sup>. A previous study showed that the ICW:TBW ratio decreased and the ECW:ICW ratio increased significantly in the lower leg with ageing<sup>(45)</sup>.

The second field method for assessment of body composition explored in the present study was CAMA. CAMA is a widely accepted and valid method of determining nutritional status in an older adult population<sup>(31)</sup>; however, its validity in estimating SMM is yet to be thoroughly investigated. The present study showed a similar mean bias and LOA to a previous study conducted by our group<sup>(46)</sup>. When assessing the validity of CAMA against DXA in the assessment of SMM, Yaxley *et al.*<sup>(46)</sup> reported a mean bias of  $-0.97$  (95% LOA  $-8.37$ ,  $6.43$ ) kg. However, participants from this particular study were elective orthopaedic patients and therefore these results cannot necessarily be generalised to a population of hip fracture patients. Moreover, the present study involved three measurements at different stages in recovery post-hip fracture whereas the study conducted by Yaxley *et al.*<sup>(46)</sup> included CAMA measures at one time point only. In the present study, we found that CAMA overestimated SMM by  $0.3$  kg at baseline,  $1.3$  kg at 6M and  $0.9$  kg at 12M when compared with DXA. Despite the mean bias being relatively small over time, any underestimation in lean muscle in a population that is already at nutritional risk is concerning. Similar to our findings for BIS, the LOA for the comparison of SMM from CAMA *v.* DXA narrowed over time (from baseline) suggesting that this method could be applied at the population level. Our findings do, however, provide some evidence that body size may influence the level of bias. Our subgroup analyses demonstrated that in participants with a BMI  $< 22$  kg/m<sup>2</sup> (with the exception of baseline measures), the mean bias for SMMCAMA was lower compared with participants with BMI  $\geq 22$  kg/m<sup>2</sup>, suggesting that upper-arm anthropometry becomes more difficult to measure in larger patients.

Previously established predictive equations overestimated SMM in our sample. The mean bias increased from baseline at 6 and 12 months for both predictive equations and the 95% LOA were wide. Typically, a combination of impedance

and anthropometric measures have been used as predictors in body composition equations<sup>(19)</sup>. The equations established by Tengvall *et al.*<sup>(19)</sup> used a combination of body weight and BIS measures. However, in an older adult population there are several anthropometric and physical measures that have been demonstrated to predict SMM<sup>(7)</sup> and may be more appropriate for use than body weight alone. Furthermore, poor agreement shown in the present results could also be the result of the sample used in the development of the predictive equations who were non-orthopaedic older adults that were unlikely to undergo the same decline in body composition as occurs post-hip fracture<sup>(10,47)</sup>.

Despite there being numerous advantages in using upper-arm anthropometry in a clinical acute care setting, measurement error and violation of measurement protocols may be problematic in a clinical setting and may even have contributed to the proportional bias for CAMA estimates of SMM observed in the present study. Moreover, a potential limitation in the present study is that we used knee height for estimating standing height, which is an important consideration in the equation for estimating SMM from CAMA<sup>(30,32)</sup>. The knee height equation used in the present study has, however, been validated<sup>(24,25)</sup> and provided a more feasible alternative to standing height in our frail sample. The use of BIS also has advantages including minimal participant burden, ease of use and portability. However, the cost for purchase and maintenance of equipment can be restrictive. Regardless of the advantages of these field methods, the present study has determined that neither is suitable for application to individual hip fracture patients, with the consequences of application extending to misclassification of nutritional status and inappropriate nutritional management. Either new methods need to be explored, such as near-IR spectroscopy which has recently been reported to be accurate and reliable for the estimation of appendicular muscle mass when compared against DXA among older adults<sup>(48)</sup>, or alternative algorithms must be developed using hip fracture patient samples that have high predictive power.

In conclusion, the results from the present study highlight that clinicians should be cautious in using portable field methods and predictive equations to estimate FFM and SMM at the individual level for hip fracture patients. They should be particularly cautious in the acute phase of recovery in light of the evidence from the present study suggesting poor agreement and proportional bias. With identification of methods and/or algorithms that demonstrate sufficient agreement against DXA, further research will be positioned to explore repeatability and predictive power.

### Acknowledgements

This research was supported by the National Health and Medical Research Council (NHMRC), Australia. M. M., I. D. C., C. W., S. K. and M. C. were responsible for designing the study, analysing and interpreting the data and preparing the manuscript. A. M. V. contributed to analysing and interpreting the data and preparing the manuscript. There are no conflicts of interest.

## References

1. Liu L, Bopp MM, Roberson PK, *et al.* (2002) Undernutrition and risk of mortality in elderly patients within 1 year of hospital discharge. *J Gerontol A Biol Sci Med Sci* **57**, 741–746.
2. Morley JE, Thomas DR & Wilson M-MG (2006) Cachexia: pathophysiology and clinical relevance. *Am J Clin Nutr* **83**, 735–743.
3. Szulc P, Munoz F, Marchand F, *et al.* (2010) Rapid loss of appendicular skeletal muscle mass is associated with higher all-cause mortality in older men: the prospective MINOS study. *Am J Clin Nutr* **91**, 1227–1236.
4. Thomas DR (2007) Loss of skeletal muscle mass in aging: examining the relationship of starvation, sarcopenia and cachexia. *Clin Nutr* **26**, 389–399.
5. Hughes VA, Frontera WR, Roubenoff R, *et al.* (2002) Longitudinal changes in body composition in older men and women: role of body weight change and physical activity. *Am J Clin Nutr* **76**, 473–481.
6. Goodpaster BH, Park SW, Harris TB, *et al.* (2006) The loss of skeletal muscle strength, mass, and quality in older adults: the health, aging and body composition study. *J Gerontol A Biol Sci Med Sci* **61**, 1059–1064.
7. Cruz-Jentoft AJ, Baeyens JP, Bauer JM, *et al.* (2010) Sarcopenia: European consensus on definition and diagnosis. *Age and Ageing* **39**, 412–423.
8. Rubenstein LZ & Josephson KR (2006) Falls and their prevention in elderly people: what does the evidence show? *Med Clin North Am* **90**, 807–824.
9. Fiatarone Singh MA, Singh NA, Hansen RD, *et al.* (2009) Methodology and baseline characteristics for the sarcopenia and hip fracture study: a 5-year prospective study. *J Gerontol A Biol Sci Med Sci* **64A**, 568–574.
10. Miller MD, Bannerman E, Daniels LA, *et al.* (2006) Lower limb fracture, cognitive impairment and risk of subsequent malnutrition: a prospective evaluation of dietary energy and protein intake on an orthopaedic ward. *Eur J Clin Nutr* **60**, 853–861.
11. Milne AC, Avenell A & Potter J (2006) Meta-analysis: protein and energy supplementation in older people. *Ann Intern Med* **144**, 37–48.
12. Murphy MC, Brooks CN, New SA, *et al.* (2000) The use of the Mini-Nutritional Assessment (MNA) tool in elderly orthopaedic patients. *Eur J Clin Nutr* **54**, 555–562.
13. Miller MD, Crotty M, Whitehead C, *et al.* (2006) Nutritional supplementation and resistance training in nutritionally at risk older adults following lower limb fracture: a randomized controlled trial. *Clinical Rehabilitation* **20**, 311–323.
14. Williams JE, Wells JC, Wilson CM, *et al.* (2006) Evaluation of Lunar Prodigy dual-energy X-ray absorptiometry for assessing body composition in healthy persons and patients by comparison with the criterion 4-component model. *Am J Clin Nutr* **83**, 1047–1054.
15. Li C, Ford ES, Zhao G, *et al.* (2009) Estimates of body composition with dual-energy X-ray absorptiometry in adults. *Am J Clin Nutr* **90**, 1457–1465.
16. Plank LD (2005) Dual-energy X-ray absorptiometry and body composition. *Curr Opin Clin Nutr Metab Care* **8**, 305–309.
17. Mazess R, Barden H, Bisek J, *et al.* (1990) Dual-energy X-ray absorptiometry for total-body and regional bone-mineral and soft-tissue composition. *Am J Clin Nutr* **51**, 1106–1112.
18. Vilaça K, Paula F, Ferrioli E, *et al.* (2011) Body composition assessment of undernourished older subjects by dual-energy X-ray absorptiometry and bioelectric impedance analysis. *J Nutr, Health Aging* **15**, 439–443.
19. Tengvall M, Ellegård L, Malmros V, *et al.* (2009) Body composition in the elderly: reference values and bioelectrical impedance spectroscopy to predict total body skeletal muscle mass. *Clin Nutr* **28**, 52–58.
20. Mitchell S, Hilmer S, Kirkpatrick C, *et al.* (2010) Estimation of lean body weight in older women with hip fracture. *J Nutr, Health Aging* **16**, 188–192.
21. Thomas SK, Humphreys KJ, Miller MD, *et al.* (2008) Individual nutrition therapy and exercise regime: a controlled trial of injured, vulnerable elderly (INTERACTIVE trial). *BMC Geriatrics* **8**, 4.
22. Sergi G, Perissinotto E, Pisent C, *et al.* (2005) An adequate threshold for body mass index to detect underweight condition in elderly persons: the Italian Longitudinal Study on Aging (ILSA). *J Gerontol A Biol Sci Med Sci* **60**, 866–871.
23. Lipschitz D (1994) Screening for nutritional status in the elderly. *Prim Care* **21**, 55–67.
24. Chumlea WC (1985) Estimating stature from knee height for persons 60 to 90 years of age. *J Am Geriatr Soc* **33**, 116–120.
25. Pini R, Tonon E, Cavallini MC, *et al.* (2001) Accuracy of equations for predicting stature from knee height, and assessment of statural loss in an older Italian population. *J Gerontol A Biol Sci Med Sci* **56**, 3–7.
26. Kim J, Wang Z, Heymsfield SB, *et al.* (2002) Total-body skeletal muscle mass: estimation by a new dual-energy X-ray absorptiometry method. *Am J Clin Nutr* **76**, 378–383.
27. Salamone LM, Fuerst T, Visser M, *et al.* (2000) Measurement of fat mass using DEXA: a validation study in elderly adults. *J Appl Physiol* **89**, 345–352.
28. Visser M, Fuerst T, Lang T, *et al.* (1999) Validity of fan-beam dual-energy X-ray absorptiometry for measuring fat-free mass and leg muscle mass. *J Appl Physiol* **87**, 1513–1520.
29. Kiebzak GM, Leamy IJ, Pierson LM, *et al.* (2000) Measurement precision of body composition variables using the Lunar DPX-L densitometer. *J Clin Densitom* **3**, 35–41.
30. Heymsfield S, McManus C, Stevens V, *et al.* (1982) Muscle mass: reliable indicator of protein-energy malnutrition severity and outcome. *Am J Clin Nutr* **35**, 1192–1199.
31. Miller MD, Crotty M, Giles LC, *et al.* (2002) Corrected arm muscle area: an independent predictor of long-term mortality in community-dwelling older adults? *J Am Geriatr Soc* **50**, 1272–1277.
32. Heymsfield S, McManus C, Smith J, *et al.* (1982) Anthropometric measurement of muscle mass: revised equations for calculating bone-free arm muscle area. *Am J Clin Nutr* **36**, 680–690.
33. St-Onge M-P, Wang Z, Horlick M, *et al.* (2004) Dual-energy X-ray absorptiometry lean soft tissue hydration: independent contributions of intra- and extracellular water. *Am J Physiol* **287**, 842–847.
34. Wang Z, Deurenberg P, Wang W, *et al.* (1999) Hydration of fat-free body mass: new physiological modeling approach. *Am J Physiol* **276**, 995–1003.
35. Bland M & Altman DG (1986) Statistical methods for assessing agreement between two methods of clinical measurement. *Lancet* **327**, 307–310.
36. Bland JM & Altman DG (1999) Measuring agreement in method comparison studies. *Stat Methods Med Res* **8**, 135–160.
37. Watson PF & Petrie A (2010) Method agreement analysis: a review of correct methodology. *Theriogenology* **73**, 1167–1179.
38. Janmahasatian S, Duffull SB, Ash S, *et al.* (2005) Quantification of lean bodyweight. *Clinical Pharmacokinetics* **44**, 1051–1065.
39. Han PY, Duffull SB, Kirkpatrick CMJ, *et al.* (2007) Dosing in obesity: a simple solution to a big problem. *Clin Pharmacol Ther* **82**, 505–508.



40. Ritz P, Vol S, Berrut G, *et al.* (2008) Influence of gender and body composition on hydration and body water spaces. *Clin Nutr* **27**, 740–746.
41. Kyle UG, Genton L, Hans D, *et al.* (2003) Validation of a bioelectrical impedance analysis equation to predict appendicular skeletal muscle mass (ASMM). *Clin Nutr* **22**, 537–543.
42. Pietrobelli A, Formica C, Wang Z, *et al.* (1996) Dual-energy X-ray absorptiometry body composition model: review of physical concepts. *Am J Physiol* **271**, 941–951.
43. Soeters PB, Reijven PL, van Bokhorst-de van der Schueren MA, *et al.* (2008) A rational approach to nutritional assessment. *Clin Nutr* **27**, 706–716.
44. van Venrooij LMW, Verberne HJ, de Vos R, *et al.* (2010) Pre-operative and postoperative agreement in fat free mass (FFM) between bioelectrical impedance spectroscopy (BIS) and dual-energy X-ray absorptiometry (DXA) in patients undergoing cardiac surgery. *Clin Nutr* **29**, 789–794.
45. Yamada Y, Schoeller DA, Nakamura E, *et al.* (2010) Extracellular water may mask actual muscle atrophy during aging. *J Gerontol A Biol Sci Med Sc* **65**, 510–516.
46. Yaxley A, Miller M, Masters S, *et al.* (2010) Body composition in older orthopaedic rehabilitation inpatients: are field methods valid? *Nutr Diet* **67**, 160–165.
47. Ensrud KE, Ewing SK, Stone KL, *et al.* (2003) Intentional and unintentional weight loss increase bone loss and hip fracture risk in older women. *J Am Geriatr Soc* **51**, 1740–1747.
48. Yoshida D, Shimada H, Harada A, *et al.* (2012) Estimation of appendicular muscle mass and fat mass by near infrared spectroscopy in older adults. *Geriatr Gerontol Int* (epublication ahead of print version 13 February 2012).