

COPPERHEAD HOLLOW (38C758): MIDDLE HOLOCENE UPLAND CONDITIONS ON THE PIEDMONT-COASTAL PLAIN MARGIN

By: Joel D. Gunn and John E. Foss

1992. [Joel D. Gunn](#) and John E. Foss. Copperhead Hollow (38CT58): Middle Holocene Upland Conditions on the Piedmont-Coastal Plain Margin. *South Carolina Antiquities* 24:1-17

Made available courtesy of the Archaeological Society of South Carolina, Inc.: <http://www.assc.net/>

*****Reprinted with permission. No further reproduction is authorized without written permission from the Archaeological Society of South Carolina, Inc.. This version of the document is not the version of record. Figures and/or pictures may be missing from this format of the document.*****

Abstract:

Excavation during July and August 1992 at 38G758 east of Jefferson, South Carolina, revealed an active Middle Holocene sand dune with buried Morrow Mountain and Guilford components on the lee side. 77e site is located on the upland margin overlooking a tributary of the Lynches River. Although it is possible that the artifact stratigraphy represents lowering as described by Michie (1990), three lines of internal evidence suggest that the components are partially in place. The lines of evidence are artifact size analysis, distribution of components relative to sand dune topography, and coherence of features. 77w Middle Holocene climatic context of the site is inferred from global scale climate variables which suggest that desiccated uplands are a reasonable hypothesis. A Guilford feature, a cluster of large fire-cracked rock, was found to contain small fragments of bone which dated to 5,350±60 B.P. 77e site was covered which dated to 5,350 ±60 B.P. 77e site was covered with longleaf pines during the subsequent 1,000 years. Site 38L15 southeast of Columbia appears to be a similar dune site with buried middle Holocene components.

Article:

Copperhead Hollow (38C758) is located about 10 miles south of the South Carolina-North Carolina border and about 50 miles southeast of Charlotte, North Carolina near Jefferson, South Carolina (Figure 1, Foss et al. 1993; Gunn and Garrow 1993; Gunn and Wilson 1993). It was excavated during July and August of 1992 for the South Carolina Department of Highways and Public Transportation in preparation for construction of the Jefferson Highway 151 bypass. The excavation encompassed 120 m of 4,200 m². The site is situated on the upland margin overlooking Fork Creek, a tributary of the Lynches River. Physiographically it is within the Sand Hills region of the Upper Coastal Plain and within a few miles of the Piedmont fall line.

Sedimentological analysis, topographic landform observations, and investigation of horizontal and vertical artifact distributions led to the conclusion that the site is a stabilized sand dune (Foss et al. 1993). Carbon dates on botanical and archaeological specimens indicated that the dune was active between approximately 7,500 and 4,500 years ago, the period defined climatologically as the middle Holocene. Background research further suggested that the presence of active upland sand dunes was not uncommon on the Atlantic Slope during the middle Holocene. The middle Holocene contains three cultural phases, Stanley, Morrow Mountain, and Guilford (Blanton and Sassaman 1989; Coe 1964). Morrow Mountain (7,500-5,500 B.P.) spans the greater part of the period and is characterized by numerous small sites, relatively homogenous tool inventories between sites irrespective of landform location, and substantial preference for quartz for tool manufacture (Sassaman 1991). Morrow Mountain diagnostics occur over an extremely wide range of geographic space and elevation (Gunn and Wilson 1993). Guilford appears to be largely restricted to the northern Piedmont. The objective of this article is to suggest the context of middle Holocene climate of the Upper Coastal Plain at global, regional, and local scales, and derive a set of implications for landscape reconstruction and other future research questions.

LANDSCAPE RECONSTRUCTION LANDSCAPE RECONSTRUCTION CONCEPTS AND METHODS

must be addressed by regional cultures in order to insure survival and continuity (Gunn 1994). Regional context is also available from significant advances made by geoarchaeologists in river systems (Brooks and Colquhoun 1991) and comparable upland geomorphology is being developed (Gunn and Poplin 1991; Johnson 1993; Michie 1990).

Given the complex nexus of all of these lines of evidence, landscape panels composed of attributes will become increasingly a heuristic necessity. However, representing short term changes as time dependent panels would be an enormous task both to prepare and to comprehend. A time panel for every 300 years since 20,000 years ago, would yield 67 panels; a panel for every decade would yield 2,000 panels. Such an array of panels would undo the heuristic value of landscape reconstruction leaving the student of landscape with a bewildering information stream. To set time and space to scales useful for the study of cultural change (see Wise and Crumley 1993 for investigation of effective scale), and at the same time retain the heuristic properties of landscape reconstruction panels, another approach should be followed for sub-epochal time periods.

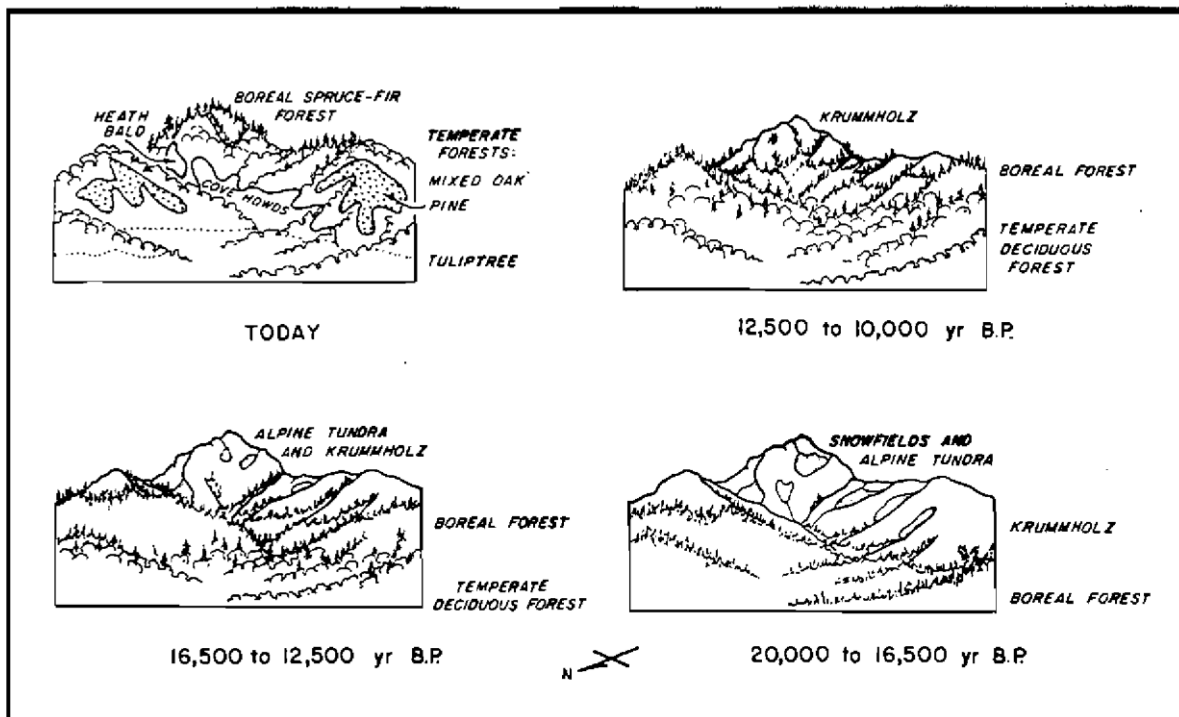


Figure 2. Appalachian Summit landscape reconstruction panels (Delcourt and Delcourt 1987).

One potential approach would be to construct panels which are not time dependent, but rather process dependent. Determining the nature of each panel would be a typological exercise not unlike typing artifacts by attributes (Figure 3, Attributes). Dzerdzeevskij (1968) found that global atmospheric circulation patterns could be classified into about a dozen types. The atmosphere changes suddenly from one type to another about every 10 days because of the restraints imposed on air streams by mountain systems, bodies of water, and other factors (Reinhold 1987). Because regional climates are a function of the dominance of one or more of these global patterns over a number of annual cycles (Gunn 1982), it is likely that one or a few panels incorporating key types would be necessary to represent the important climates of a given locality or region. For the present, these key types can be represented by the more traditional Koeppen climatic classification system concepts of tropical, subtropical, temperate, and Arctic airmasses, although further research will probably refine airmass attributes. The climate patterns would then be combined with attributes of local vegetation, fluvial chronology, and cultural landscape modification to produce a suite of panels summing the findings of a landscape study. Rather than being temporally driven, the panels would be process driven thus limiting their numbers without limiting the scope of their implications. Each panel(s) would represent a number of periods during which relatively stable climate of a few decades or centuries generated comparable landscape attribute combinations.

The global circulation patterns as observed during the annual cycle are products of seasonal variation in the global temperature and atmospheric circulation patterns (Figure 3, Seasons). A typical temperate latitude winter in the 1960s and 1970s (cool world) featured a dominant Arctic airmass characterized by dry and cold atmospheric attributes. This was followed by a temperate spring (warm and wet) and a subhumid summer (hot and dry). With the exception of the years following the 1982 El Chichon eruption, the 1980s were globally hot. Globally hot winters were dominated by circulation patterns which are more typical of cool world spring. The climatic attributes of a given panel are thus defined by the seasonal global average temperature or Global Energy Balance (GEB, Budyko 1977). The relationship between GEB and the climatic attributes of the landscape panels is repeated each time the GEB enters a given range (Figure 4 A-E). The wet-warm panel applies each time the global average temperature enters the warm range. Marine, fluvial, vegetational, and cultural attributes can take less nimble and less reversible trajectories thus requiring additional panel sets when combined with the atmospheric attributes.

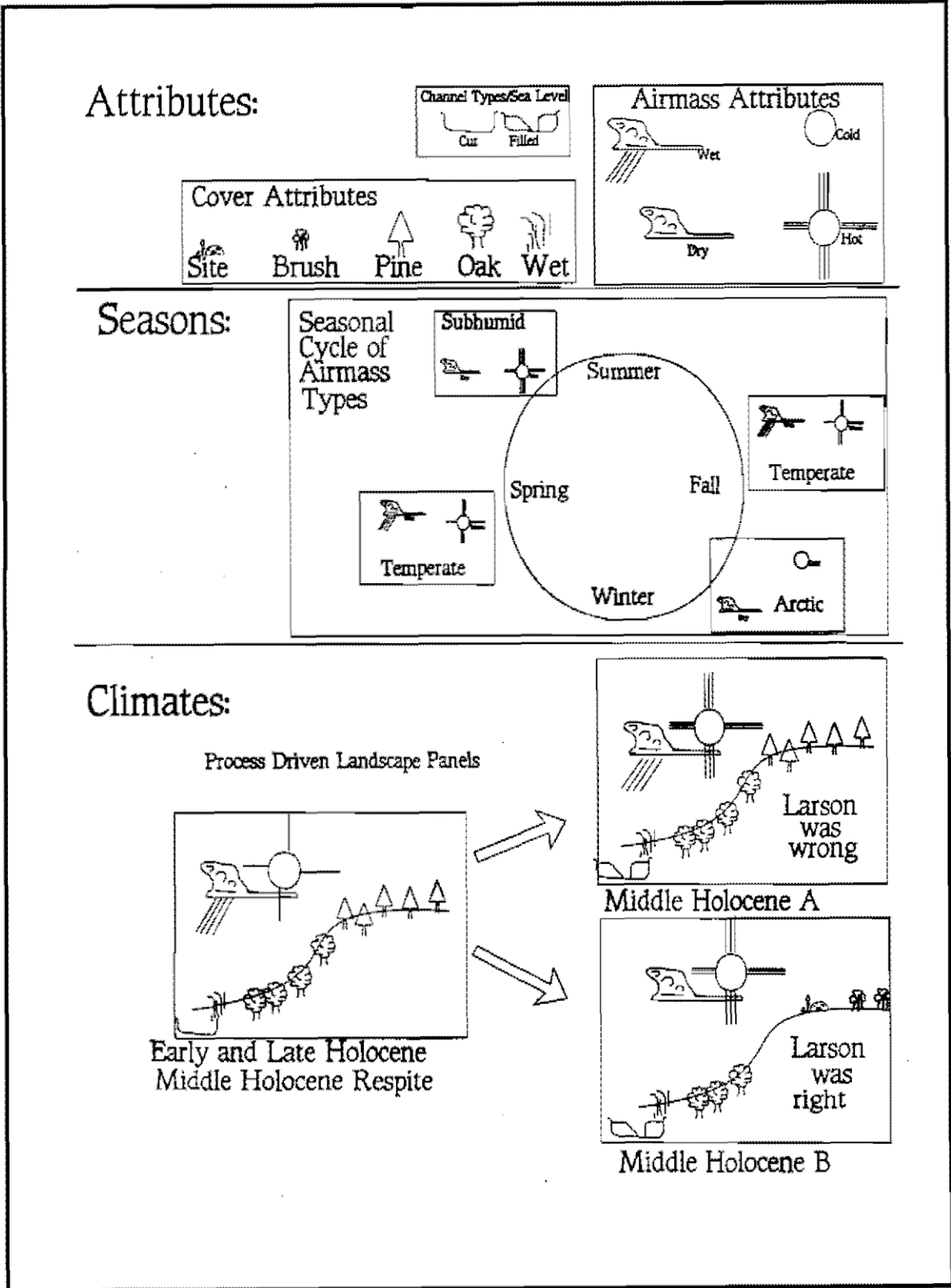


Figure 3. Attributes of landscape reconstruction (top), seasons of a Middle Global Energy Balance (middle), and alternative scenarios for Holocene climatic change processes of the Coastal Plain of the Atlantic Slope (bottom).

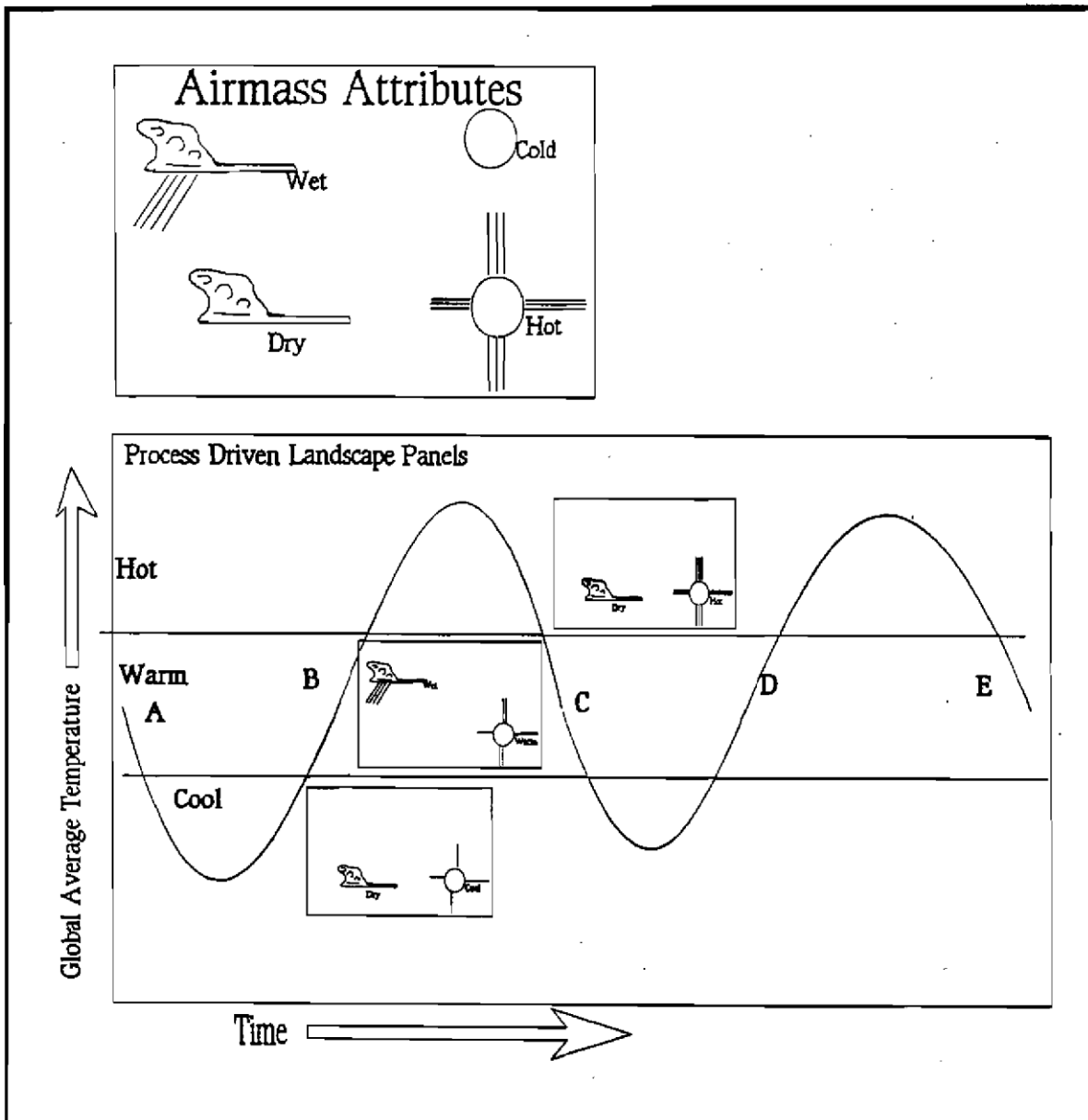


Figure 4. Process driven landscape panels.

In the South Carolina Coastal Plain, certain attributes of landscape composition have been under study for some time. Because of the proximity of the Atlantic Gulf Stream, sea level and coastal estuarine development influence the amount of moisture available at a given location. It has been found that sea levels rose to near present levels as late as about 6,000 B.P. (Brooks and Colquhoun 1991). Following that time, the existing system of coastal shallows, barrier islands, and estuaries was established. The presence of a relatively high sea level in turn sponsored the filling of river floodplains. The development of stream floodplains is time transgressive from the coast beginning at about 6,000 B.P. and extending the upper reaches of the Coastal Plain by 4,000 B.P. Comparative studies of the Savannah (Blue Ridge) and South Edisto (Piedmont) rivers indicated that there are both common and unique attributes in the deposition records of their watersheds indicating that both global-regional climate and idiosyncrasies of the dyers catchments influenced deposition; thus, each river must be studied in detail to distinguish these two influences.

Vegetation during the Holocene has been studied at White Pond (Watts 1980) and in several studied at White Pond (Watts 1980) and in several river systems (Brooks and Colquhoun 1991). The riverine studies show a constant vegetation cover. At White Pond, which is a natural lake, there is possible indication of desiccation and interruption of the pollen record during the middle Holocene. The vegetation records of these two

environments, riverine and upland pond, are potentially quite different River floodplains, as well, may be different from watershed to watershed because their headwaters vary between the Blue Ridge Mountains, the Piedmont, and the Coastal Plain (Brooks 1990:22; Goodyear et al. 1979; Gunn and Wilson 1993:21-24). Because mountains capture quantities of moisture under most climatic conditions, rivers with mountain sources could have been continuously well-supplied with water. On the other hand, the dominance of either the subtropical or the Arctic dry air mass diminishes precipitation in the Piedmont and Coastal Plain; Piedmont and Coastal Plain rivers could experience periods of restricted rainfall when these air masses are prevalent over the year. Upland ponds would be a special case resembling the Piedmont-Coastal Plain rivers, but more dependent on local precipitation because of their restricted catchment. Upland ponds are common in the Piedmont because of tilted bedrock formations providing reservoirs (Gunn and Poplin 1991), although these sources of vegetation information have been exploited little if at all for paleoclimatic data. Work on a range of these environments is ongoing (Mark Brooks, personal communication 1993).

Seasonality of precipitation is critical to the character of vegetation. Information on orbital wobble (or precession, see Broecker and Denton 1990) lends some new insights into this parameter during earlier phases of the Holocene. While it has been generally acknowledged since the 1940s that the middle Holocene was warmer than current conditions (Antevs 1948), the cause and nature of that climate has only recently emerged. The middle Holocene global average temperature appears to have been about two degrees (centigrade) higher than at present. However, causes of that global climate suggest a very different set of conditions than one would envision by simply warming the world by two degrees while retaining current atmospheric processes. Studies of the effects of orbital precession have indicated that local environments adjusted to substantially different distributions of annual radiation budget (Davis 1984). During the early and middle Holocene, the radiation budget was radically different from that at present (Figure 5); radiation was about seven percent higher during the summer and seven percent lower during the winter (Kutzbach and Guetter 1986). This would have reformatted the seasons in the middle latitudes to extremely hot summers and extremely cold winters. The season of mixed tropical and Arctic air mass movements that we recognize as spring would have rushed northward through any given location in the temperate zone during a brief period of a week or so. In other words, following a long, cold, and dry winter, there would be almost no spring frontal precipitation; winter would have been followed immediately by the ballooning of the Bermuda subtropical high over the Southeast. A long, dry, cold winter would have been followed by a long, hot, dry summer.

On the Piedmont and Coastal Plain, these droughty conditions would create a thermal inversion precluding precipitation except at points of uplift such as the fall line, Piedmont mountain remnants, and Blue Ridge front. Since the hot world atmosphere would be more laden with moisture, however, the Blue Ridge might be almost permanently enshrouded in clouds, thunderstorms, and moisture. Thus, rivers originating in the Blue Ridge would carry much runoff and might have favorable discharge-to-sediment load ratios. With little vegetation to hold upland sediments on the Piedmont and Coastal Plain, and little precipitation, Piedmont and Coastal Plain rivers would become sediment choked. This condition would be aggravated by torrential tropical storms, which increase with the length of the hot season (Wendland 1977), streaming down on a denuded upland landscape. Under these conditions, only sand bodies with their inherent resistance to erosion would remain intact in the uplands.

UPLAND CONDITIONS IN THE UPPER UPLAND CONDITIONS IN THE UPPER COASTAL PLAIN AT COPPERHEAD HOLLOW

Copperhead Hollow is located at the west upland margin of Fork Creek about 3.9 miles above its confluence with Lynches River. It is on one of a series of ridges that extend southeastward from the upland proper which forms the interfluvium between Lynches River and Fork Creek. A once-active stream curls around the west side of the ridge. The sandy terminus of the ridge is visibly arcuate in shape with the arms of the arc pointing to the west (Figure 6). The relief from the interior of the arc to the top is about 1.5 meters. This topographic feature is recognizable as the form taken by sand dunes. Analysis of sediments from profiles across the dune (Figure 7) indicated that the surficial sediments were eolian in grain size and surface texture (Foss et al. 1993).

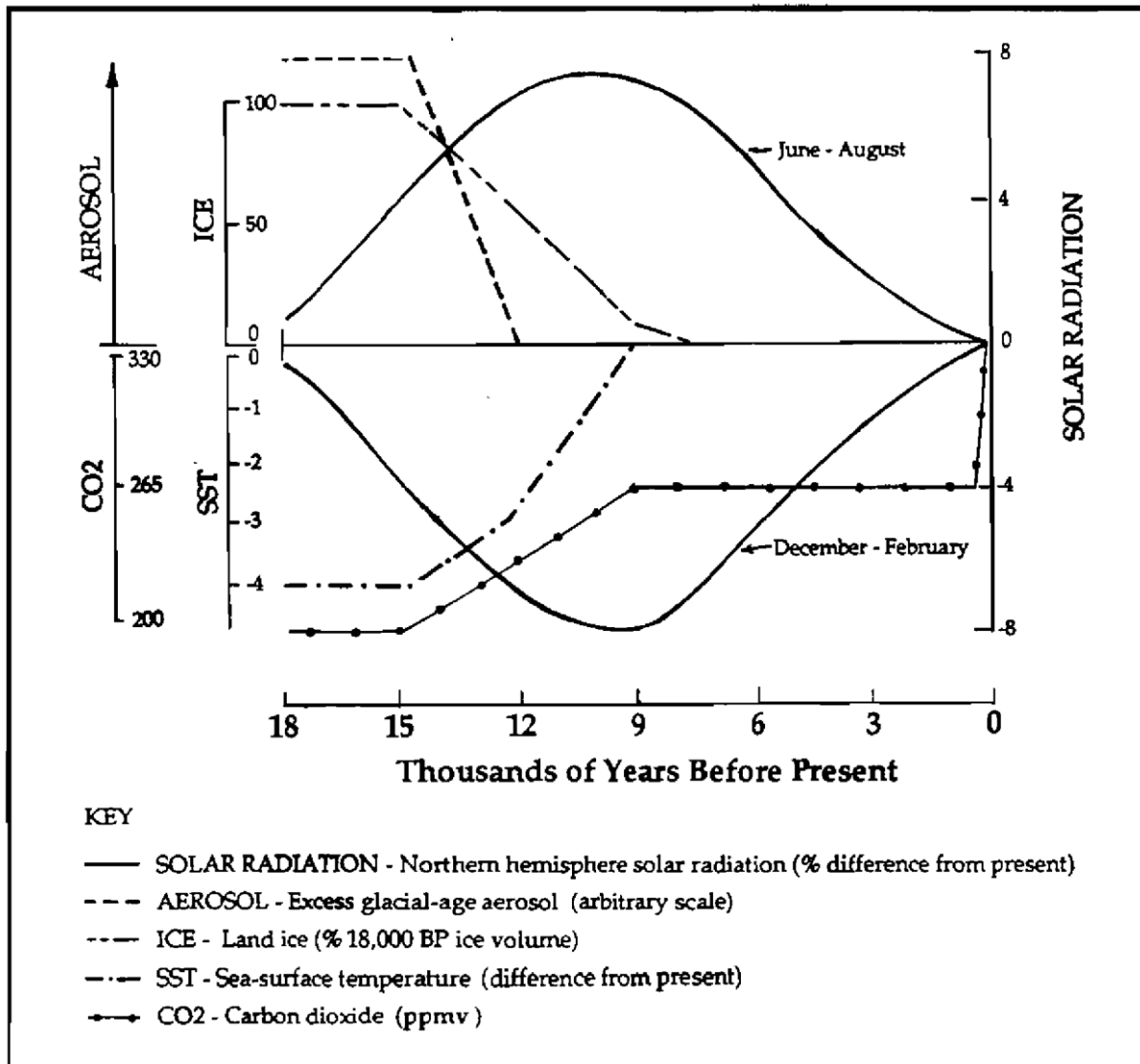


Figure 5. Winter and summer radiation budgets for Holocene (Kutzbach and Guetter 1986).

Buried artifact distributions show there to be two areas (Figure 8) of the site in which artifacts occur in coherent distributions of levels and features, one on the lee side of the dune to the southeast (Locus A [Unit 5]) and the other on the northeast (Locus B [Unit 6]). There is a corridor northeast (Locus B [Unit 6]). There is a corridor between the two loci that is relatively free of artifacts (Unit 15).

Locus A contained artifacts in coherent patterns to about 40 cm below the surface. The deepest of the occupation levels contained fire-cracked rock, a prismatic blade fragment (Figure 9), a scraper on a crest blade, a teardrop scraper, and a quartzite hammerstone. Though no late Paleoindian or early Archaic diagnostics were found in this level, three were found in the level above (two Hardaway and one Kirk). This second deepest occupation level contained predominantly Morrow Mountain points (n=6). The level immediately below the plowzone, and mostly between plow scars, contained a Guilford point and a Savannah River point. Several fire-cracked rock features were defined, as well as carbon features that proved to be longleaf pine roots (Shea 1993). A carbon sample was submitted for dating from one of the longleaf pine tree roots which returned a date of 3,49Q.+70 B.P. (Beta 56172).

Locus B contained fewer artifacts per unit of excavation. The diagnostics were exclusively of Guilford age (n=4). The sediments were distinctly more eolian than in Locus A.

A carbon sample was taken from a longleaf pine tree root for dating which returned a date of $3,790 \pm 60$ B.P. (Beta 56174). Small pieces of large mammal bone

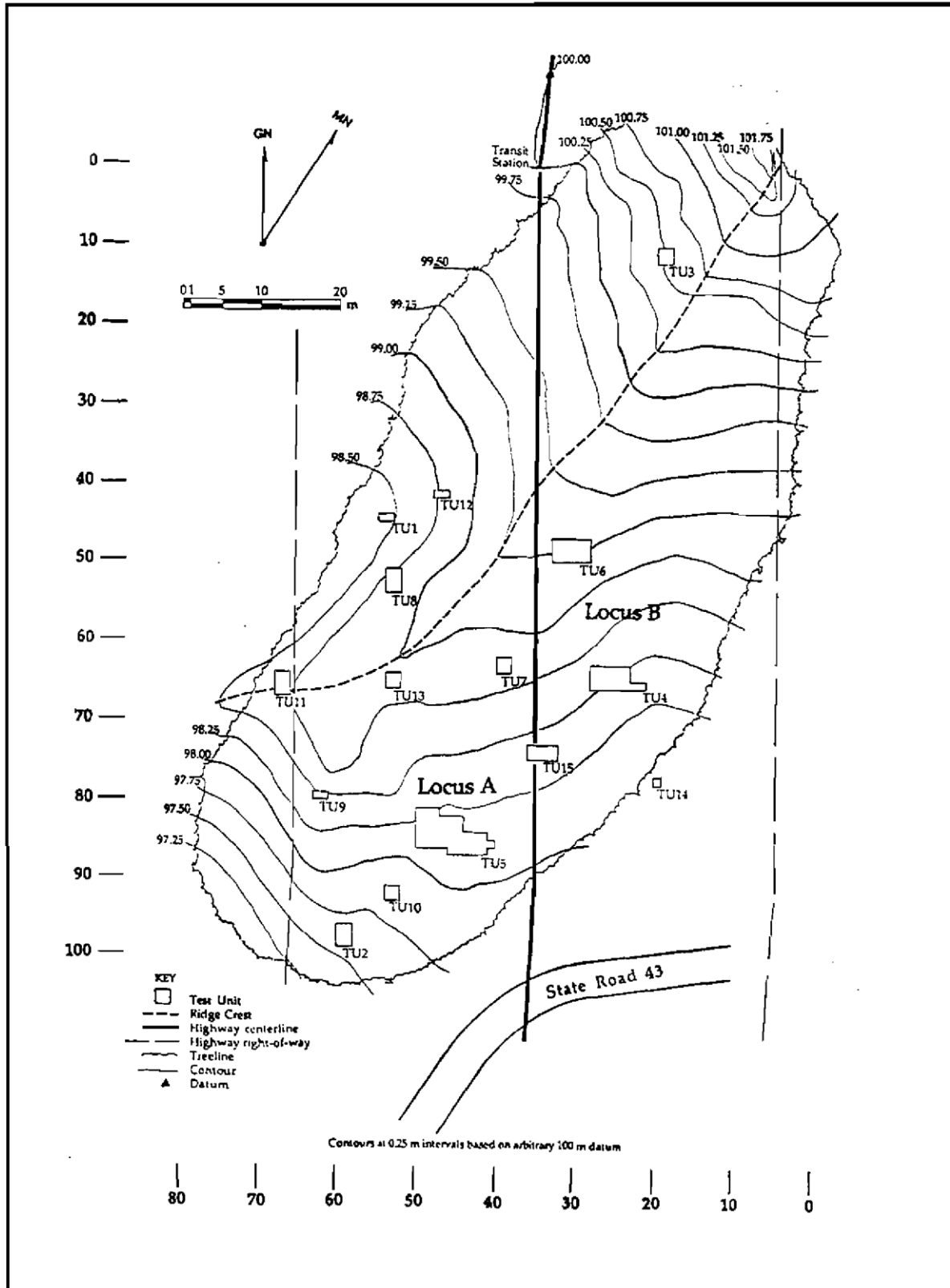


Figure 6. Contour map of Copperhead Hollow (38CT58), showing excavation units (Gunn and Wilson 1993).

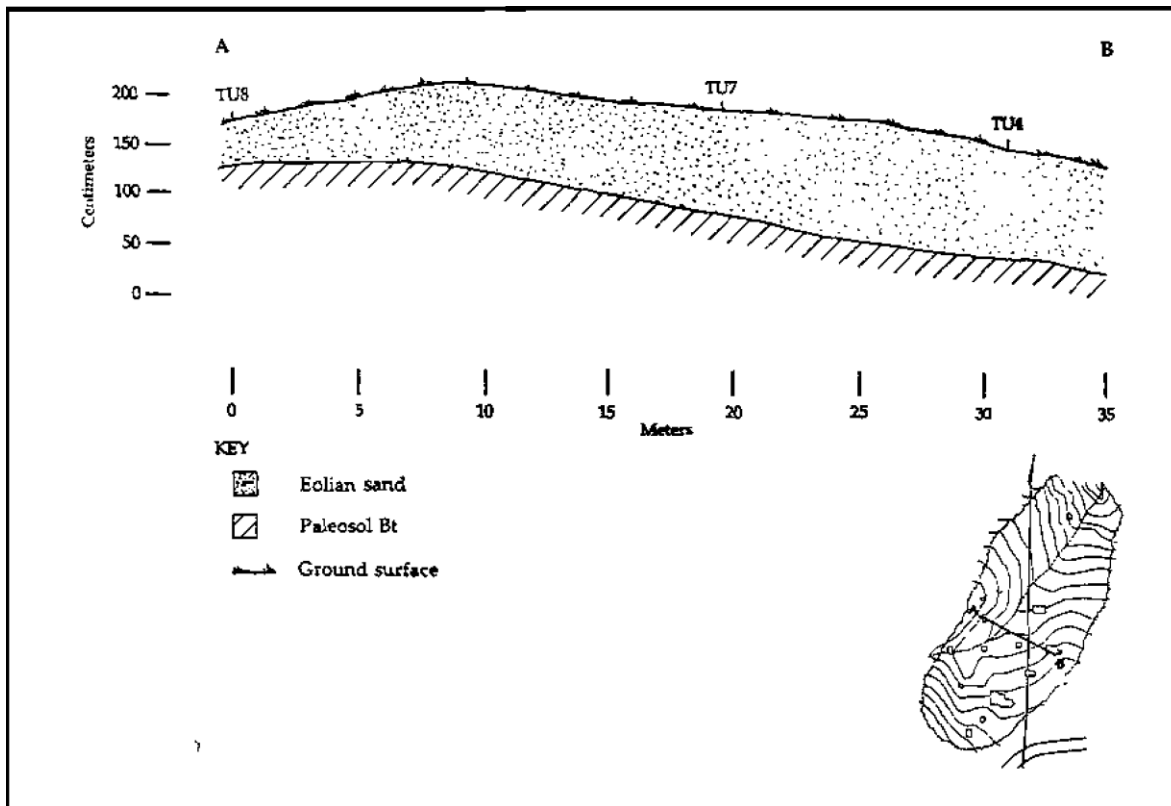


Figure 7. Sediment profile across 38CT58 (Foss et al. 1993).

were collected from a fire-cracked root feature; they were accelerator dated to $5,350 \pm 60$ BP. (Beta 56174). This is the first date on Guilford age deposits. A date of $4,805 \pm 139$ was obtained on a gededeposits. A date of $4,805 \pm 139$ was obtained on a stratum containing Brier Creek points at Phinizy Swamp (Elliott et al. 1993:164, 191, 355). Brier Creek points are relatively large and thick Guilford-related points that are frequently made on chert.

Material collected from the surface included 174 lb (79 kg) of fire cracked rock and diagnostics from all cultural phases of the Holocene. Relatively few of the Morrow Mountain diagnostics—so prominent in the subsurface ($n=10$)—were found on the surface ($n=6$)- Guilford diagnostics, however, were more abundant on the surface ($n=10$) than in the subsurface ($n=7$); this reflects the near-surface stratigraphic position of the Guilford component and perhaps more stability of the dime during the Guilford occupation.

Over 10,000 fragments of fire-cracked rock from the subsurface were quantified as to size. Analysis of these data suggested that fire-cracked rock fragments of less than 4 cm were moving down the sediment column (Figure 10, see Gunn and Wilson 1993; Johnson 1993; Michie 1990 for discussion). The rate of movement varied with sediment texture and area of the site (Figure 11); coarse sandy areas of the site experienced less movement, fragments in finer grained sediments experienced more movement

The topography, artifact analysis, analysis of artifact movement, and radiocarbon dating suggest the following interpretation of the site. The dune may have been active during the late Paleoindian and/or Early Archaic, an exceptionally dry and hot early Holocene period (Gunn 1992a, 1992b). The dune was clearly active during the Morrow Mountain phase (ca. 7,500 to 5,500 B.P.). The prevailing winds, presumably during dry winters, with westerly to northwesterly directions, buried the Morrow Mountain component. Conditions on the dime limited occupation to the southeast area of the site, perhaps by unstable surface conditions on the dune proper which was represented by the unoccupied area to the east and northeast. During the subsequent Guilford phase (ca. 5,500 to 5,000 B.P.) the dune was stable enough to allow occupation over the whole of the lee and top side of the dune as evidenced by the distribution of

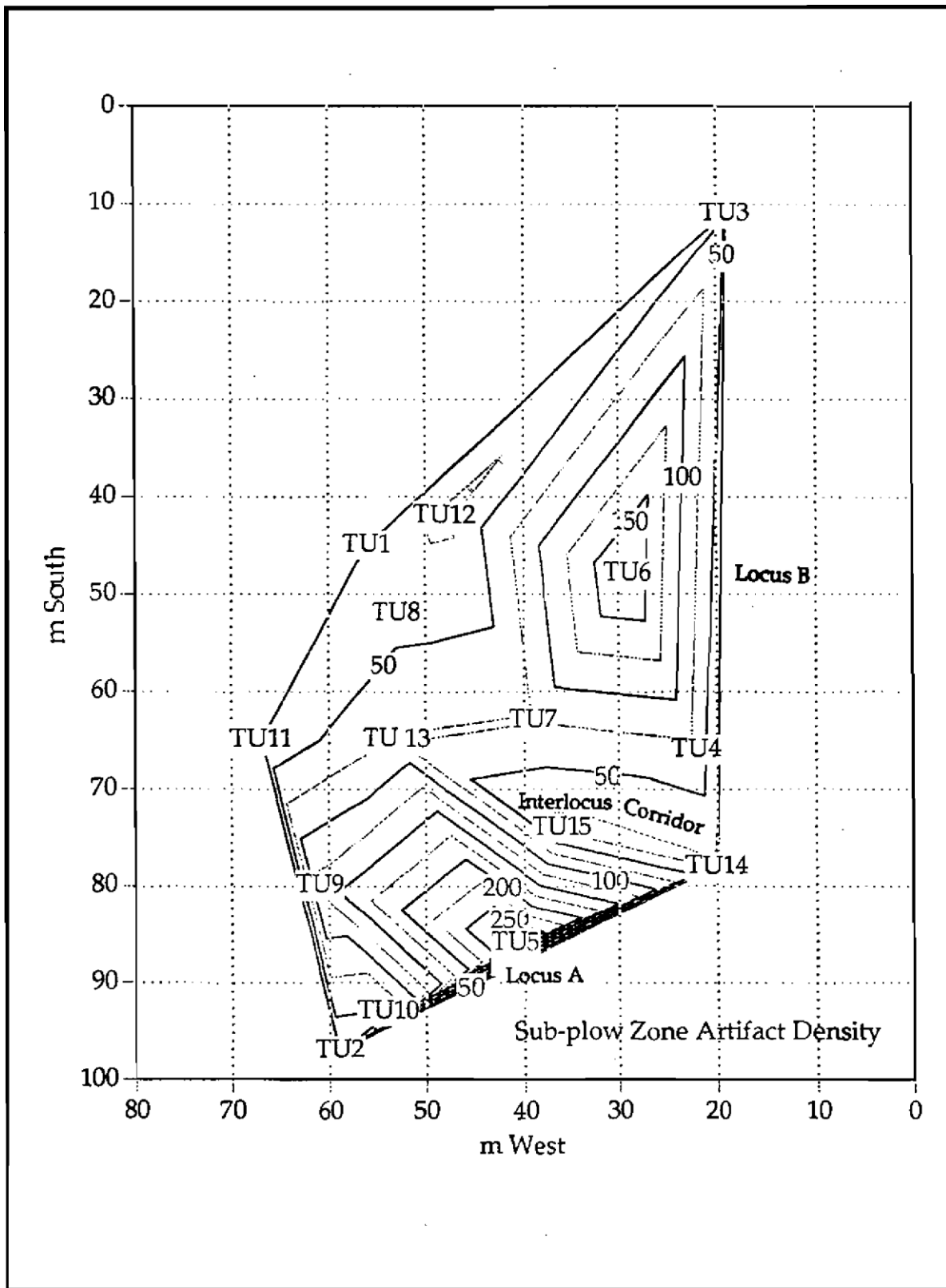


Figure 8. Contour map of subsurface artifact densities in Locus A and Locus B at 38CT58 (Gunn and Wilson 1993).



Figure 9. Diagnostic artifacts from Copperhead Hollow ordered by strata (Gunn and Wilson 1993).

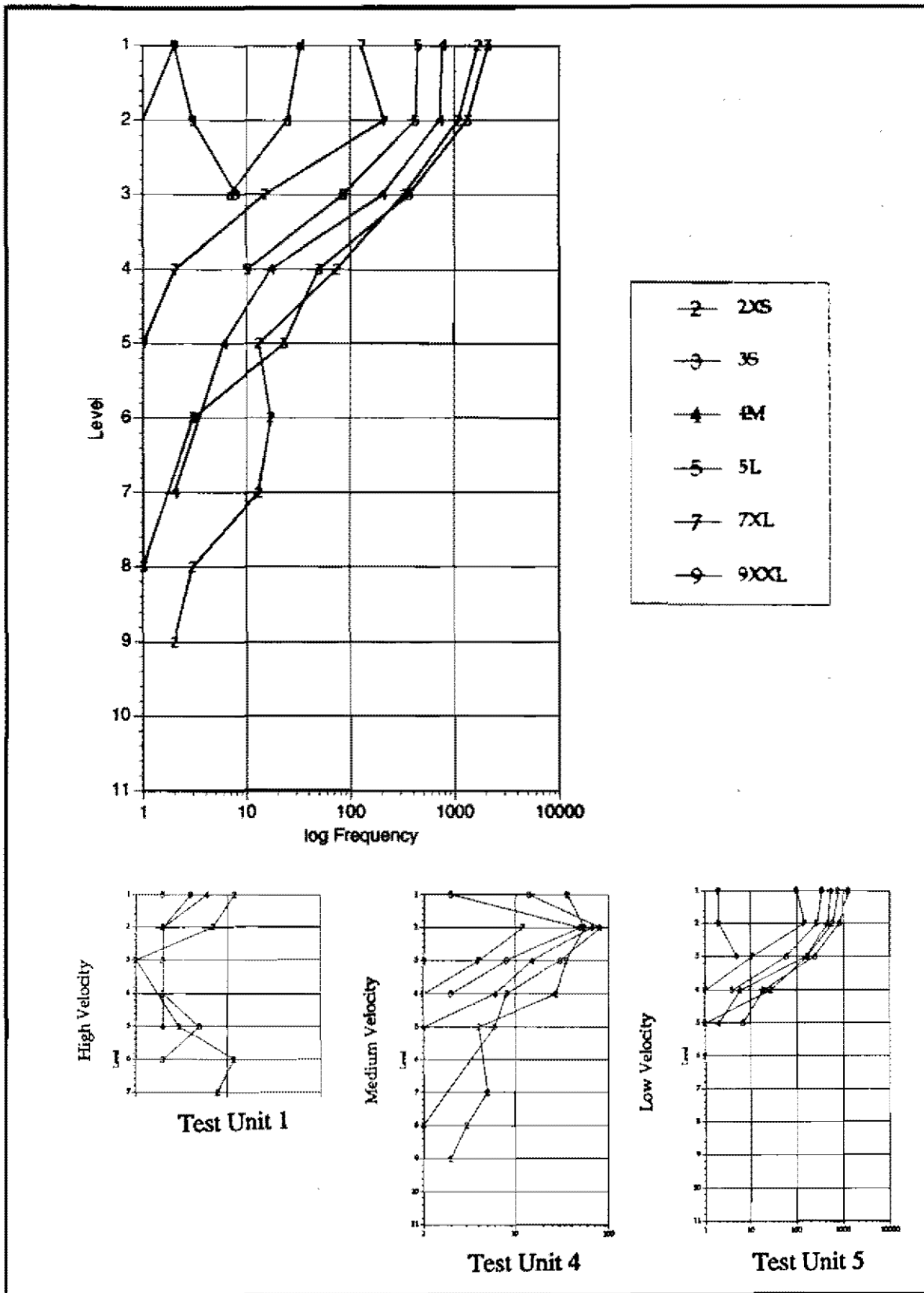


Figure 10. Site-wide fire-cracked rock size class velocity diagram and examples from low, medium, and high velocity excavation units (Gunn and Wilson 1993).

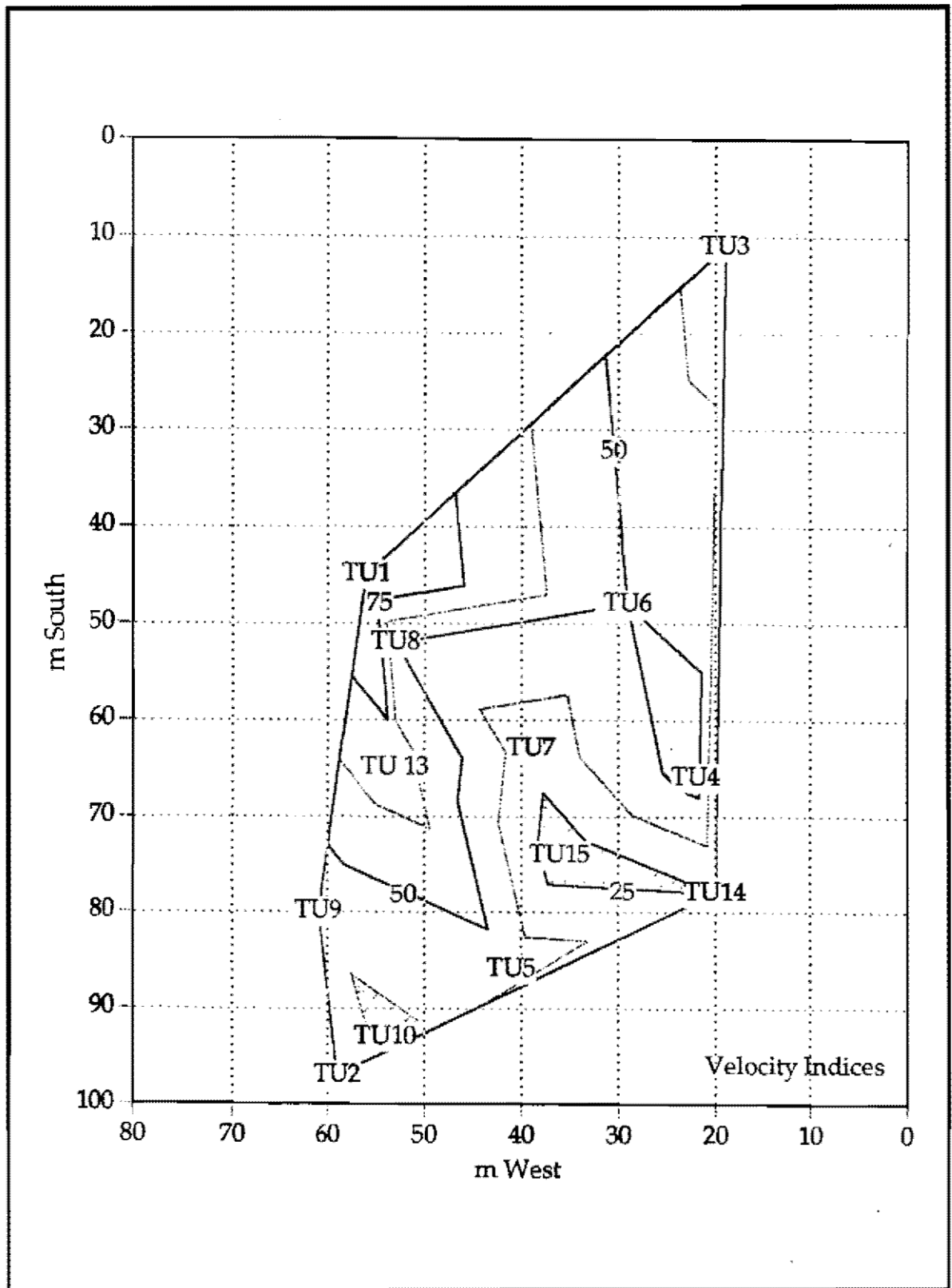


Figure 11. Contour map of artifact velocity indices (Gunn and Wilson 1993).

Guilford points. It remained, however, active enough to bury the Guilford component(s), particularly on the northeast side of the site. This may indicate that the prevailing (winter?) winds were from the southwest. (Was this due to changes in prevailing winds caused by the establishment of coastal shallows? By 4,000 to 3,500 B.P. the dune was stabilized and longleaf pines had had time to grow old and die (hundreds of years). The surface has been stable since that time as artifacts from following periods were confined to the surface.

Upland Conditions in the Upper Coastal Plain

This scenario implies that the uplands of the Sand Hills were denuded of vegetation capable of restraining eolian transport at least during some sub-epochal intervals of the middle Holocene (Figure 3, Middle Holocene B). An important research question at this point is whether Morrow Mountain occupants inhabited Copperhead Hollow during periods of active eolianization or during intervening periods of relative surface stability. In the Guilford case, there is sufficient evidence to raise this question. There is at least one period of generally recognized middle Holocene global cooling, or respite, at 5300 B.P. Since this corresponds to the date on the Guilford horizon, was Guilford occupation limited to a relatively brief episode, perhaps a century, of moist cool climate in an otherwise hot and dry period? Because there is only one date on the Guilford occupation, this study offers no resolution of this question although coincidence flags the event for intensive research.

The uplands were attractive to Middle Archaic peoples for occupation. We suggest that, given the sedimentary evidence of forest denudation and open cover, perhaps grasslands, occupants of the Morrow Mountain and perhaps the Guilford phases were present as big game hunters. Bison and elk might be considered as potential targets, although the more usual whitetailed deer would also be possible depending on whether the vegetation was grassland (grazers) or scrub oak savanna (browsers).

In addition to the apparent sand dime at Copperhead Hollow, there are other indications of middle Holocene dune activity in the Coastal Plain. The topography of 38LX5 southeast of Columbia. The topography of 38LX5 southeast of Columbia (Anderson 1979) resembles that of Copperhead Hollow with an arcuate western edge; it also possesses a buried Morrow Mountain component on the southeast side. Sand dunes have also been identified in the Cape Fear drainage and dated to the middle Holocene between 7,700 and 5,720 B.P. (Sollers and Mills 1991).

Pollen evidence specifically defining the vegetation of the uplands on the Atlantic Slope is generally lacking; the only hint is the possible middle Holocene hiatus at White Pond. However, at the B. L. Higbee oxbow on the Tombigbee River in Mississippi in a somewhat similar fall line situation, the vegetation of the adjacent uplands during the middle Holocene was judged to be scrub oak woodland (Whitehead and Sheehan 1982). Can a similar cover be documented for the Atlantic Slope?

The current consensus appears to be that uplands were under a forest cover during the middle Holocene (Sassaman 1991). However, presuming that a grassland (bison and elk) or a scrub oak savanna (whitetailed deer) was the middle Holocene upland cover, resolves at least one question. Larson (1980) proposed that upland pine barrens such as those observed in the Southeast during the Colonial Period, were essentially dead in terms of foraging potential. If a continuity of upland pine barrens (cool and wet climate) is assumed through the middle Holocene (Figure 3, Middle Holocene A), the presence of middle Holocene archaeological sites on the uplands calls into question Larson's pine barrens hypothesis. If grasslands (and dunes) and/or scrub oak savanna or mosaic are assumed (Figure 3, Middle Holocene B), there is no conflict, and Larson's pine barren hypothesis could still be correct. The dunes at 38LX5 and Copperhead Hollow argue for an open upland cover. Also, if there was filling of rivers on the Atlantic Slope, as there was during the middle Holocene generally over the Southeast (Brakenridge 1980), this argues for grasslands, even sparse grasslands (Schumm 1965). During the historic period, Lawson (1967) suggests that at least some part of the upper Piedmont near Yadkinville, North Carolina was in grasslands in the 1700s although he did not visit them. He indicated that these people specialized in bison hunting. Globally, the early 1700s was a relatively warm period.

CONCLUSIONS

Middle Holocene conditions at the Copperhead Hollow site, the presence of another dune site of similar configuration (38LX5), and other dunes and negative pollen evidence, argue for desiccation of upland in the upper Coastal Plain during the Middle Holocene. Global climate during this period, driven by extremely variant insolation regime, probably would have fostered an open vegetation cover, most likely grasslands or scrub oak. River drainage systems originating in the Piedmont and Coastal Plain would be expected to be sediment choked if uplands were poorly covered. A grassland biome may have been favorable to reliance on large game.

Acknowledgements

An earlier version of this paper was presented at the Annual Conference of the Archaeological Society of South Carolina on April 3, 1993. Wayne D. Roberts, Mark J. Brooks, Daniel F. Cassedy, and Paul A. Webb read a preliminary draft of the paper.

REFERENCES CITED

Aram Ernest

1948 Geologic-Climatic Dating in the West. *American Antiquity* v 20:317-335.

Anderson, David

1979 *Excavations at Four Fall Line Sites: The Southeastern Columbia Beltway Project*.

Commonwealth Associates, Inc., Jackson Michigan. Report submitted to the South Carolina Department of Highways and Public Transportation, Columbia.

Blanton, Dennis B., and Kenneth E. Sussman

1989 Pattern and Process in the Middle Archaic Period of South Carolina. In *Studies in South Carolina Archeology: Essays in Honor of Robert L Stephenson*, edited by A.C. Goodyear and G.T. Hanson, pp. 53-71. Anthropology Studies 9. Occasional Papers of the South Carolina Institute of Archeology and Anthropology. University of South Carolina, Columbia.

Brakenridge, G- Robert

1980 Widespread Episodes of Stream Erosion During the Holoceoe and Their Climatic Cause. *Nature* 283:655-656.

Broeker, W. S. and George H. Denton

1990 Atmosphere, Weather and Climate. *Scientific American* 262:48-56.

Brooks, Mark J.

1990 A Point-Bar Site on the South Edisto Rine in the Upper Coastal Plain of South Carolina: Depositional History and Environmental Implications. *South Carolina Antiquities* 22:1725.

Brooks, Mark J., and Donald J. Colquhoun

1991 Late Pleistocene-Holocene Depositional Change in the Coastal Plain of the Savannah River Valley: A Geoarchaeological Perspective. *Early Georgia* 19:1-20.

Bryson, Reid A.

1986 Late Quaternary Volcanic Modulation of Milankovitch Climate Forcing. *Paper* presented at the Symposium on Mechanisms of Climate and Culture Change, organized by J. Gunn and A. Paulsen. Annual Meeting of the American Anthtopological Association, Philadelphia.

Bryson, R. A-, and B. M. Goodman

1980 Volcanic Activity and Climatic Changes. *Science* 207:1041-1044.

Budyko. M. I.

1977 *Global Ecology*. English translation 1980. Progress Publishers, Moscow.

Coe, Joffre L.

1964 *The Formative Cultures of the Carolina Piedmont*, Transactions of the American Philosophical Society 54(5), Philadelphia,

Davis, Owen

1984 Multiple Thermal Maxima During the Holocene. *Science* 225:617-619.

Delcourt, Paul A., and Hazel R. Delcourt

1987 *Long-Term Forest Dynamics of the Temperate Zone: A Case Study of Late-Quaternary Forests in Lantern North America*. *Ecological Studies* 63, Springer-Verlag, New York.

Dincauze, Dena F.

1992 Discussant. In *Paleoindian and Early Archaic Period Research in the Lower Southeast: A South Carolina Perspective*, edited by D. Anderson, K. Sassaman, and C. Judge, pp. 359-360. Council of South Carolina Professional Archaeologists and the South Carolina Institute of Archaeology and Anthropology, Columbia.

Dzerdzevskij, B. L

1968 *Circulation Mechanisms in the Northern Hemisphere in the 20th Century* (Translation by R. Goedecke), edited by F. Berryman. Institute of Geography, Soviet Academy of Sciences, Moscow.

Mon, Daniel T., R. Jerald Ledbetter, and Elizabeth A. Gordon

1993 *G4', Transportation, and the Archaic Period: Archaeology for the Bobby Jones Expressway Extension Project*. Report submitted to Georgia Department of Transportation by Southeastern Archaeological Services, Inc., Athens, Georgia.

Foes, John, R. J. Lewis, and C. J. Stiles

1993 Soil Characteristics of Archaeological Sites

Investigated in the Jefferson Bypass Project in South Carolina. In *Archaeological Data Recovery Investigations on Sites 38CT54 and 38CT58 along the S.C. 151 Jefferson Bypass, Chesterfield County, South Carolina*.

Garrow & Associates, Raleigh, submitted to South Carolina Department of Highways and Public Transportation,

Goodyear, Albert C., John H. House, and Neal W. Ackerly

1979 *Laurens-Anderson: An Archaeological Study of the Inter-Riverine Piedmont*. *Anthropology Studies* 4, South Carolina Institute of Archaeology and Anthropology, University of South Carolina, Columbia.

Gunn, Joel D.

1982 Analysis of Modern Climate Data. In *A Study of Late Quaternary Environments and Early Man along the Tombigbee River, Alabama and Mississippi*, edited by G. Mato and J. Gunn. pp. 2-19 to 2-26. National Park Service. Atlanta.

1991 Influences of Various Forcing Variables on Global Energy Balance During The Period of Intensive Instrumental Observation (1958-1987) and Their Implications for Paleoclimate. *Climatic Change* 19:393-420,

1992a A Framework for the Paleoindian-Early Archaic Transition. In *Paleoindian and Early Archaic Period Research in the Lower Southeast: A South Carolina Perspective*, edited by D. Anderson, K. Sassaman, and C. Judge, pp. 367-371, Council of South Carolina Professional Archaeologists and the South Carolina Institute of Archaeology and Anthropology. Columbia.

1992b Regional Climatic Mechanisms of the Clovis Phase on the Southern Plains. In *Probocidians and Paleoindian Interactions*, edited by J. Fox, C. Smith and K. Wilkins, pp. 171-190, Baylor University Press, Waco, Texas,

1994 Global Climate and Regional Biocultural Diversity. In *Historical Ecology*, edited by C. L. Country. SAR Press, Sante Fe, New Mexico,

Gunn, Joel II, and Eric Poplin

1991 *Archaeological Sample Survey of the US 421 Improvement (Tip 4.-2120A) Yadkin County, North Carolina*. Brockington Associates, Inc., Chapel Hill.

Gunn, Joel II, and Kathy J. Wilson

1993 *Archaeological Data Recovery Investigations at Sites 38CT54 And 38CT58 along the S.C. 151 Jefferson Bypass, Chesterfield County, South Carolina*. (arrow & Associates, Raleigh, submitted to South Carolina Department of Highways and Public Transportation,

Gunn, Joel D., and Carole L. Crumley

1989 Global Energy Balance and Regional Hydrology: A Burgundian Case Study, Proceedings of the Conference on Landscape - Ecological Impacts of Global Climatic Change, University of Utrecht, Netherlands, and *Earth Surface Processes and Landforms* 16:579-592.

Gunn, Joel D., and Patrick Ganow

1993 *Two Winds. Two Arrows*. Garrow Associates, Raleigh, submitted to South Carolina Department of Highways and Public Transportation-

Johnson, Donald L

1993 Dynamic Denudation Evolution of Tropical, Subtropical and Temperate Landscapes with Three Tiered Soils: Toward a General Theory of Landscape Evolution. *Quaternary International*, 17:67-78.

Ktitzbach, John E. and Peter J. Gerner

1986 The Influence of Changing Orbital Parameters and Surface Boundary Conditions on Climate Simulations for the Past 18,000 years. *Journal of Atmospheric Research* 43:1726-1739.

Larson, L H.

1980 *Aboriginal Subsistence Technology on the Southeastern Coastal Plain During the Late Prehistoric Period*. University of Florida Press, Gainesville.

Lawson, John

1967 *A New Voyage to Carolina*, Edited by H. Lefler, University of North Carolina Press, Chapel Hill.

Rampino. Michael R., John E. Sanders, Walter S. Newman, and L. K. Konigsson (editors)

1987 *Climate: History, Periodicity, and Predictability*. Van Nostrand Reinhold Company. New York-

James L.

1990 Bioturbation and Gravity as a Potential Site Formation Process: The Open Air Site, 380E261, Georgetown County, South Carolina, *South Carolina Antiquities* 2127-46.

Reinhold, Brian

1987 Weather Regimes: The Challenge in Extended-Range Forecasting. *Science* 235:43744L

Sassaman. Kenneth E.

1991 Adaptive Flexibility in the Morrow Mountain Phase of the Middle Archaic Period, *South Carolina Antiquities* 23:31-42.

Schneider, Stephen H.

1987 Climate Modeling, *Scientific American*, 256(5)72-80.

Schneider, Stephen H., and Ranch Loader

1984 *The Coevolution of Climate and Life*, Sierra Club Books, San Francisco.

Schumm, S. A.

1965 Quaternary Paleohydrology. In *The Quaternary of the United States*. edited by H.E. Wright, Jr. and D. Frey, pp. 783-794. Princeton University Press, Princeton.

Shea, Andrea

1993 Floral Analysis for Site! 38C138 and 38CT54, In *Archaeological Data Recovery Investigations at Sites 38CT54 and 38CT58 along the S.C.151 Jefferson Bypass, Chesterfield County, South Carolina*. Garrow & Associates, Raleigh, submitted to South Carolina Department of Highways and Public Transportation.

Soller, David R., and High H. High H. Mills

1991 Surficial Geology and Geomorphology. In *The Geology of the Carolinas*, edited by J. Horton, Jr., and V. Zullo, pp. 290-308. University of Tennessee Press, Knoxville.

Watts, W. A.

1980 Late-Quaternary Late-Quaternary Vegetation History of White Pond on the Inner Coastal Plain of South Carolina *Quaternary Research* 13:187-199.

Wendland Wane M.

1977 Tropical Storm Frequencies Related to Sea Surface Temperatures. *Journal of Applied Meteorology* 16:477-481.

Wendland. W. M., and Reid A. Bryson

1974 Dating Climatic episodes of the Holocene. *Quaternary Research* 4:9-24.

Williams, L D., and T. T. M. L Wigley

1983 A Comparison of Evidence for Late Holocene Summer Temperature Variations in the Northern Hemisphere. *Quaternary Research* 20:286-307.

We, Alicia L. and Catole L Crumley

1993 Facilitating Multiscalar Analysis with Geographic Information Systems (GIDS). Paper presented at the Southern Illinois University Visiting Scholars Conference in Archaeological Method and Theory, Carbondale,

Whitehead, D. R.

1985 Palynology and Pleistocene Phytogeography of Unglaciaded Eastern North America. In *The Quaternary of the United States*. edited by H.E. Wright, Jr. and D. Frey, pp. 417-432. Princeton University Press. Princeton.

Whitehead, Donald, and Mark Sheehan

1982 Postglacial Vegetation and Environmental Changes Near Columbus, Mississippi: Preliminary Results. In *A Study of Late Quaternary Environment and Early Man along the Tombigbee River, Alabama and Mississippi*, edited by G. Mum and S. Gunn, pp. B-270-296. National Park Services, Atlanta.