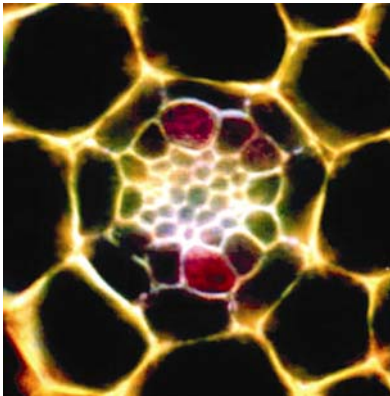


Helsingin yliopiston kasvitieteen julkaisu
Publications in Botany from University of Helsinki
N:o 33

**CELL CYCLE REGULATION DURING PLANT
GROWTH AND DEVELOPMENT, gene expression
studies in *Arabidopsis thaliana* (L.) Heynh.**

Kristiina Himanen



Department of Plant Systems Biology
Flanders Interuniversity Institute for Biotechnology, VIB
University of Ghent
and
Department of Biosciences
Division of Plant Physiology
University of Helsinki

2003