

Article

Distribution of Antennal Olfactory and Non-Olfactory Sensilla in Different Species of Bees

Elisa Frasnelli * and Giorgio Vallortigara

Center for Mind/Brain Sciences, University of Trento, Piazza della Manifattura 1, I-38068 Rovereto, Italy; giorgio.vallortigara@unitn.it

* Correspondence: elisa.frasnelli@gmail.com

Academic Editor: Lesley Rogers

Received: 27 May 2017; Accepted: 25 July 2017; Published: 28 July 2017

Abstract: Several species of social bees exhibit population-level lateralization in learning odors and recalling olfactory memories. Honeybees *Apis mellifera* and Australian social stingless bees *Trigona carbonaria* and *Austroplebeia australis* are better able to recall short- and long-term memory through the right and left antenna respectively, whereas non-social mason bees *Osmia rufa* are not lateralized in this way. In honeybees, this asymmetry may be partially explained by a morphological asymmetry at the peripheral level—the right antenna has 5% more olfactory sensilla than the left antenna. Here we looked at the possible correlation between the number of the antennal sensilla and the behavioral asymmetry in the recall of olfactory memories in *A. australis* and *O. rufa*. We found no population-level asymmetry in the antennal sensilla distribution in either species examined. This suggests that the behavioral asymmetry present in the stingless bees *A. australis* may not depend on lateral differences in antennal receptor numbers.

Keywords: lateralization; asymmetry; bees; antennal sensilla; olfaction

1. Introduction

The different functional specialization of the right and left sides of the nervous system (lateralization) is a feature shared by many vertebrates and also invertebrate species (see [1,2]). Lateralization manifests itself in a substantial range of behaviors and cognitive tasks, and mediates distinct sensory, motor and cognitive processes. In several species, behavioral asymmetries such as, for example, a side-bias in turning in one direction or a preferential use of one eye, ear or nostril to respond to specific stimuli, have been associated with corresponding asymmetries in the anatomical substrates of the nervous system (see [1]). These anatomical differences can be present at different levels: (i) in macroscopic anatomy, such as, for example, the Sylvian fissure of the lateral sulcus in humans that, in most people, is longer in the left hemisphere [3]; (ii) in the different size of the fibers that connect sensory reception and motor afference, such as the Mauthner cells responsible for the lateralization in the C-start bending reaction to danger in fishes [4]; or (iii) at the cellular level, such as in the different arrangement of synapses for specific neurotransmitters between the right and the left side of specific cerebral structures (e.g., the glutamate *N*-methyl-D-aspartate (NMDA) receptor, implied in learning and memory, in the left and right hippocampus of rodents [5]).

Several species of social bees exhibit population-level lateralization in learning odors and recalling olfactory memories. The first evidence comes from a study by Letzkus and colleagues [6], showing that honeybees *Apis mellifera* trained with only one antenna in use to associate an odor with a sugar reward in the proboscis extension reflex (PER) paradigm performed better in a recall test 5–6 h after training when they used their right antenna. Letzkus et al. [6] also looked at the distribution of one type of olfactory sensilla (the *sensilla placodea*) on the antennae and found that the right antenna had more *sensilla placodea* compared to the left antenna, and they linked this result with

the better performance of the bees in the PER. Since the bees were both trained and tested with only one antenna in use, it is very difficult to establish whether the behavioral asymmetry observed related to the learning phase or to the recall of the olfactory memory.

Access to unilaterally acquired memories for odors is transferred to the other side of the brain in honeybees [7] and this transfer seems to occur from the right to the left side of the brain. Specifically, Rogers and Vallortigara [8] showed that there is a time-dependence in the behavioral asymmetry in the PER. Specifically, when honeybees are trained in a PER paradigm with both antennae in use, they are better at recalling the olfactory memory 1–2 h after training using their right antenna, and 8–12 h after training using their left antenna [8,9]. The same pattern of lateralization in the recall of short- and long-term olfactory memories has been found in the Australian social stingless bees *Trigona carbonaria*, *Trigona hockingsi* and *Austroplebeia australis*—the three species are better able to recall short- and long-term memories through the right and left antenna respectively [10]. It is important to underline that the results of the study conducted by Rogers and Vallortigara [8] and those of the following studies [9–13] investigated asymmetry in the recall of olfactory memories and not in the learning phase as the bees were trained with both antennae in use. Recent evidence has confirmed that in honeybees trained with only one antenna in use during olfactory learning, the left hemisphere is more responsible for long-term memory and the right hemisphere is more responsible for the learning and short-term memory [14]. Moreover, the gene expression in the brain of these honeybees was also asymmetric, with more genes having higher expression in the right hemisphere than the left hemisphere [14].

Interestingly, the non-social mason bees *Osmia rufa* are not lateralized in this way for the recall of short-term memory since they can retrieve it both through the circuits of the right and left antenna [11]. However, when tested for electroantennographic (EAG) responsivity to different odors, most mason bees showed individual lateralization (seven and eight individuals out of 21 showed significantly stronger responses respectively with the right and the left antenna), whereas honeybees show population-level lateralization with higher EAG responses on the right than on the left antenna [11].

Bumble bees *Bombus terrestris* trained on the PER paradigm with only one antenna in use and tested one hour after training show the same asymmetrical performance favoring the right antenna as do honeybees and the three species of Australian stingless bees. However, in bumble bees EAG responsivity is not lateralized at the population level, as it is in honeybees. In fact, as with mason bees, most bumble bees show individual lateralization (nine and three individuals out of 20 showed significantly stronger responses respectively with the right and the left antenna) [12].

In honeybees, the population-level asymmetry in the recall of olfactory memories may be partially explained by a morphological asymmetry at the peripheral level—the right antenna has about 5% more olfactory sensilla than the left antenna [6,13]. However, this does not exclude that the right antenna may also have a more important role than the left antenna in learning the association between an odor and a sugar reward in the PER paradigm [6]. As a consequence, it is possible that the morphological asymmetry observed in the number of olfactory sensilla influences the learning process and not the recall of the olfactory memory.

Moreover, honeybees with only the right antenna in use are better at discriminating a target from a background odorant in a cross-adaptation experiment (i.e., when a target odor is superimposed on the same or a different background odor), and this behavioral performance is not due to different discrimination of changes in odor concentration, nor to different learning abilities during odor discrimination [15]. Indeed, Rigosi et al. [15] showed that odor representations in the projection neurons of the right and left antennal lobes (ALs) are different with higher Euclidian distances between activity patterns in the right AL compared to the left. Interestingly, it is the odor representation in the right and the left ALs that is different. In fact, the functional activity patterns elicited by stimulation with different odors (both pheromones and environmental odors) in the right and the left AL of the same honeybee are bilaterally symmetrical [16]. In addition, at 14 days post-emergence the levels of neuroligin-1 expression, a protein involved in learning and memory, are

higher in honeybees with only their right antenna compared to honeybees with only the left or both antenna [17].

In bumble bees *Bombus terrestris*, morphological counting of the olfactory and non-olfactory sensilla show a predominance in the number of only one type of olfactory sensilla, the *s. trichodea type A*, in the right antenna [12]. In the Australian stingless bee *T. carbonaria*, the right and the left antenna present the same number of olfactory and non-olfactory sensilla [18].

The antennae of female wasps *Anastatus japonicus* Ashmead (Hymenoptera: Eupelmidae), a non-social parasitoid, present more *s. placodea* on the right antenna than on the left antenna. Interestingly, in this species the distribution of *s. trichodea* and *s. basiconica* is asymmetrical between the antennae, but depends on the segment. In fact, these sensilla are more abundant on the third flagellum antennomere of the right antenna than on the corresponding flagellum of the left antenna—the reverse results were observed for *s. trichodea* on the scape, pedicle, and fourth to fifth flagellum antennomeres, and for *s. basiconica* on the seventh flagellum antennomere and the third clava antennomere—suggesting that the asymmetry between the antennae can vary depending on the segment [19].

Here we looked at the possible correlation between the distribution of antennal sensilla in those species mentioned above that have been previously studied for behavioral asymmetry in the recall of olfactory memories, specifically the social Australian stingless bee *Austroplebeia australis* and the non-social mason bee *Osmia rufa*.

2. Materials and Methods

2.1. Subjects

Female adult mason bees *Osmia rufa* were obtained as they emerged from over-wintering cocoons collected at Crevalcore (Bologna, Italy) during spring 2011. Australian stingless *A. australis* foragers ($N = 14$) of unknown age were caught as they exited a well-established hive located in Valla, NSW, Australia within the natural range of the species in summer 2014.

2.2. Types of Sensilla

The different types of sensilla were identified on the basis of previous studies conducted on other Apoidea species [11,12,15]. For both species, we distinguished three types of putative olfactory sensilla (Figure 1)—*s. placodea*, *s. trichodea type A* (thick), and *s. coeloconica*—and two types of non-olfactory sensilla (Figure 1)—*s. trichodea type B* (thin) and *s. ampullacea* (Figure 2a)—clearly distinguishable from the putative olfactory *s. coeloconica* (Figure 2b) as they are smaller in size. Interestingly, the antennae of *A. australis* also present two more types of sensilla which we could clearly recognize, the non-olfactory *s. coelocapitulum* (Figure 1) and the putative olfactory *s. basiconica* (Figures 1 and 2c), exactly as with honeybees [13] and *T. carbonaria* [18]. Bumble bees *B. terrestris* also possess *s. basiconica*, but not *s. coelocapitulum* [12].

We also observed other types of sensilla in *O. rufa*, the *s. basiconica thick* (Figure 2d)—which is bigger than the standard *s. basiconica* (Figure 2c) and presents only lateral pores—and the *s. trichodea type C* (Figure 2e)—characterized by lateral pores, rifling, and an apical pore, which may have a double taste (because of the apical pore) and olfactory (because of the lateral pores) function. Finally, in *A. australis* we saw another type of *s. trichodea type D* (Figure 2f), with no pores (and thus probably non-olfactory), which given the lack of curvature could be easily recognized and distinguished from the olfactory *s. trichodea type A* (Figure 2f). We decided not to count these three new types of sensilla (i.e., *s. basiconica thick*, *s. trichodea type C* and *s. trichodea type D*) since we were not sure of their function. Thus, we limited our analyses to the sensilla we had already observed in other Apoidea species and which we could clearly distinguish based on previous studies.

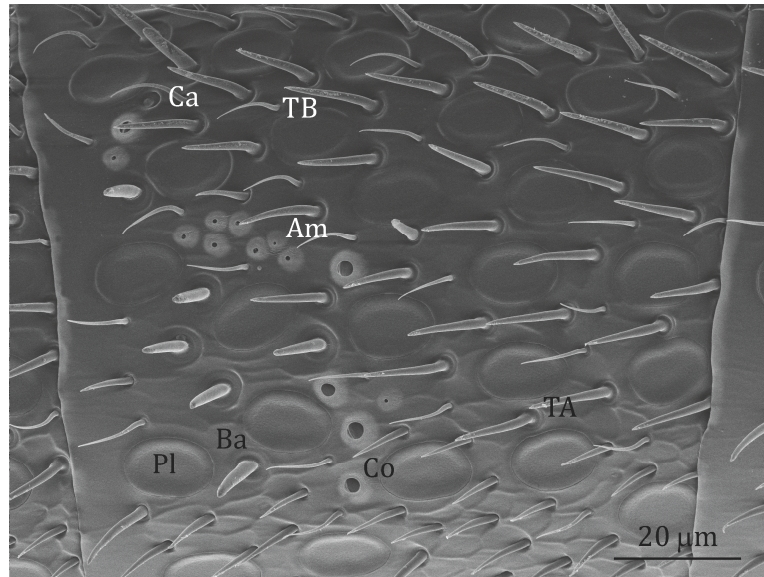


Figure 1. Scanning electron micrograph of the 9th segment of the left antenna of an *A. australis* forager (left view, i.e., imaging of the left antenna side). In black the putative olfactory *s. placodea* (Pl), *s. trichodea type A* (TA), *s. coeloconica* (Co) and *s. basiconica* (Ba); in white the non-olfactory *s. trichodea type B* (TB), *s. ampullacea* (Am) and *s. coelocapitulum* (Co). All the sensilla mentioned above are also present in *O. rufa* females apart from *s. basiconica* and *s. coelocapitulum*.

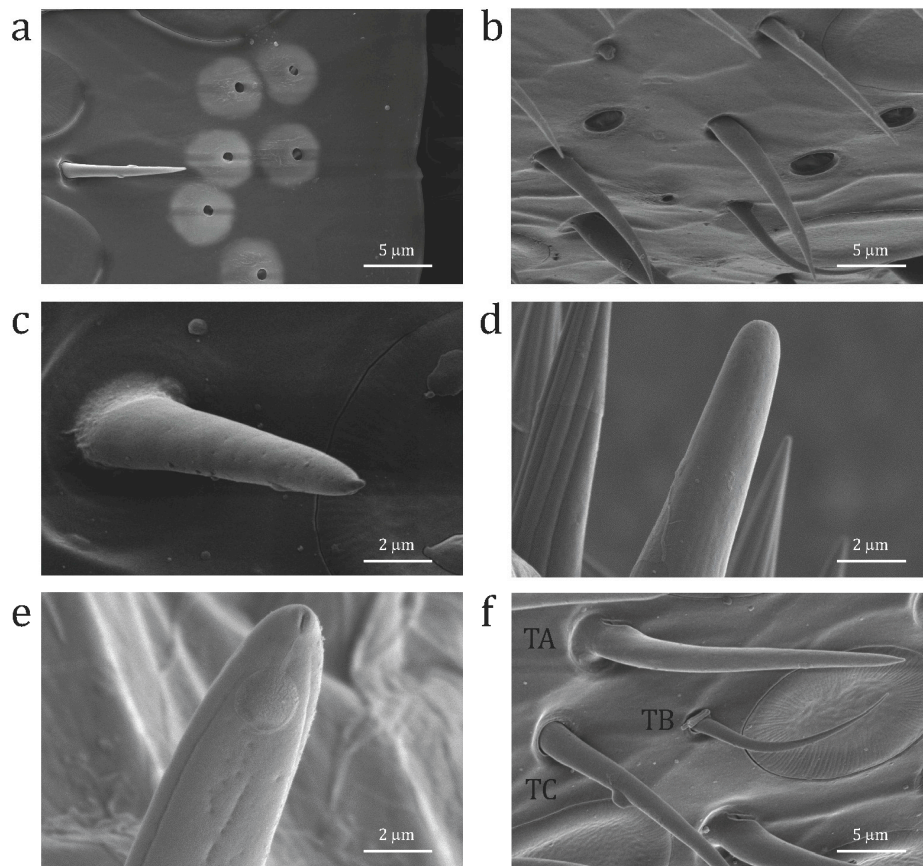


Figure 2. Scanning electron micrographs of details of (a) *s. ampullacea* (Am) in *A. australis*; (b) *s. coeloconica* (Co) in *A. australis*; (c) standard *s. basiconica* (Ba) in *A. australis*; (d) *s. basiconica* thick in *O. rufa*; (e) *s. trichodea type C* in *O. rufa*; and (f) *s. trichodea type D* (TD), *s. trichodea type A* (TA), *s. trichodea type B* (TB) in *A. australis*.

2.3. Scanning Electron Microscopy (SEM)

The mason bees *O. rufa* were preserved in a freezer in Trento before being taken to the Department of Medicine Laboratory, Azienda Provinciale per i Servizi Sanitari (APSS), Trento, Italy for preparation and imaging of the sample. There the antennae of the bees were removed and cleaned using ultrasound in a bath of acetone. The right and left antenna of each bee were then attached to a circular stub by double-sided conductive tape (TAAB Laboratories Equipment Ltd., Aldermaston, UK) and gold-coated to guarantee electrical conductivity during imaging with a XL 30, field emission environmental scanning electron microscope (FEI-Philips, Eindhoven, The Netherlands). Each antenna was imaged from four different viewpoints—ventral view (sample positioned at 0°), right view (sample tilted at −75°, imaging of the right antenna side), left view (sample tilted at +75°, imaging of the left antenna side), and dorsal view (following removal of the antenna from the stub and placing it upside down)—as done previously for honeybees [13], bumblebees [12] and *T. carbonaria* [18].

The same procedure was adopted for the *A. australis* bees with the difference that these bees were preserved in a freezer in Australia before being transported to the Department of Medicine Laboratory in Trento, Italy. Since *A. australis* bees are much smaller in size than mason bees, the whole heads of the bees rather than just the antennae were removed, as previously done for *T. carbonaria* [18]. Then, they underwent the same sample preparation and imaging as mason bees. As there are no olfactory receptors on the first two segments of the mason bee flagellum, only the third to tenth segments were scanned. Each segment from the third to ninth was scanned longitudinally at a magnification of 600 times. A magnification of 800 times was used for the tenth smallest segment (apex). For the same reason, only the second to tenth segments were scanned for *A. australis*. Given that the antennae of this species are smaller than the antennae of mason bees, each segment was scanned longitudinally at a larger magnification of 1000 times rather than 600 times.

2.4. Sensilla Counting and Statistical Analyses

Each sensilla was tagged and counted in all acquired images using ImageJ software (U.S. National Institutes of Health, Bethesda, MD, USA). We conducted analysis of variance (ANOVA) with the antennae (two levels), segments (eight levels for *O. rufa* and nine levels for *A. australis*), and type of sensilla (five and seven levels respectively for *O. rufa* and *A. australis*) as within-subjects factors, using Greenhouse–Geisser values of probability when sphericity was violated. Further analyses were conducted by grouping and separating the putative olfactory from the non-olfactory sensilla. Two-tailed binomial tests were used to evaluate individual differences in the number of olfactory and non-olfactory sensilla between the right and the left antennae.

3. Results

The results for both species are shown in Figure 3. For *O. rufa*, the overall ANOVA revealed significant main effects of segment (Greenhouse–Geisser, $F_{2,841,36.930} = 734.905$, $p < 0.0001$) and sensilla type (Greenhouse–Geisser, $F_{1,416,18.410} = 976.911$, $p < 0.0001$), but no effect of the antenna (left versus right) (sphericity assumed, $F_{1,13} = 4.217$, $p = 0.061$), although there was a tendency towards more sensilla on the left antenna. There was a significant interaction between segment \times sensilla type (Greenhouse–Geisser, $F_{3,877,50.399} = 261.403$, $p < 0.0001$) but no significant interaction with antenna (antenna \times type, Greenhouse–Geisser, $F_{2,154,28.006} = 2.031$, $p = 0.147$; antenna \times segment, Greenhouse–Geisser, $F_{2,005,26.066} = 0.602$, $p = 0.555$; antenna \times type \times segment, Greenhouse–Geisser, $F_{3,734,48.538} = 1.269$, $p = 0.296$).

Similarly, for *A. australis*, the overall ANOVA revealed significant main effects of segment (Greenhouse–Geisser, $F_{2,002,26.027} = 458.141$, $p < 0.0001$) and sensilla type (Greenhouse–Geisser, $F_{1,545,20.091} = 1982.535$, $p < 0.0001$), but no effect of the antenna (left versus right) (sphericity assumed, $F_{1,13} = 0.045$, $p = 0.835$). There was a significant interaction between segment \times sensilla type (Greenhouse–Geisser, $F_{4,941,64.230} = 244.914$, $p < 0.0001$) but no significant interactions with antenna (antenna \times type, Greenhouse–Geisser, $F_{1,324,17.206} = 1.380$, $p = 0.267$; antenna \times segment, Greenhouse–

Geisser, $F_{3,480,45.243} = 1.405$, $p = 0.251$; antenna \times type \times segment, Greenhouse–Geisser, $F_{5,609,72.911} = 0.917$, $p = 0.483$).

We then summed up all the olfactory sensilla and all the non-olfactory sensilla, and conducted separate ANOVAs with sensilla type (olfactory vs. non-olfactory—two levels) as within-subjects factors to see whether there was any significant antenna \times sensilla type interaction. For *O. rufa* (Figure 3a) we found a significant main effect of segment (Greenhouse–Geisser, $F_{2,841,36.930} = 734.905$, $p < 0.0001$) and sensilla type (sphericity assumed, $F_{1,13} = 6102.170$, $p < 0.0001$), but no effect although a tendency of the antenna (sphericity assumed, $F_{1,13} = 4.217$, $p = 0.061$). Again, there was a significant interaction between segment \times sensilla type (Greenhouse–Geisser, $F_{2,835,36.855} = 533.080$, $p < 0.0001$) but no significant interaction with antenna (antenna \times type, sphericity assumed, $F_{1,13} = 3.337$, $p = 0.091$; antenna \times segment, Greenhouse–Geisser, $F_{2,005,26.066} = 0.602$, $p = 0.555$; antenna \times type \times segment, Greenhouse–Geisser, $F_{2,499,32.488} = 1.040$, $p = 0.378$). Likewise, ANOVA of the data for olfactory vs. non-olfactory sensilla for *A. australis* (Figure 3b) revealed significant main effects of segment (Greenhouse–Geisser, $F_{2,002,26.027} = 458.141$, $p < 0.0001$) and sensilla type (sphericity assumed, $F_{1,13} = 2269.510$, $p < 0.0001$), but no effect of the antenna (sphericity assumed, $F_{1,13} = 0.045$, $p = 0.835$). There was a significant interaction between segment \times sensilla type (Greenhouse–Geisser, $F_{3,160,41.079} = 98.505$, $p < 0.0001$) but no significant interactions with antenna (antenna \times type, sphericity assumed, $F_{1,13} = 1.893$, $p = 0.192$; antenna \times segment, Greenhouse–Geisser, $F_{3,480,45.243} = 1.405$, $p = 0.251$; antenna \times type \times segment, Greenhouse–Geisser, $F_{3,086,40.112} = 1.029$, $p = 0.391$).

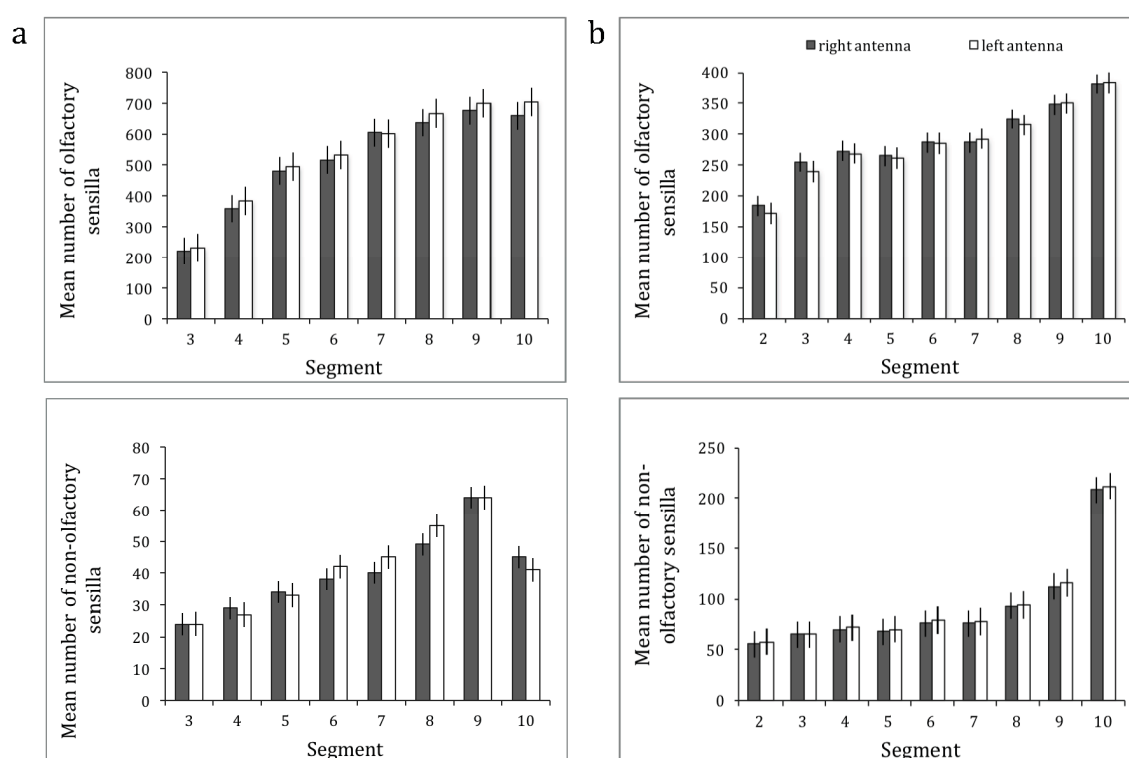


Figure 3. The mean number of olfactory and non-olfactory sensilla with the respective standard error (SE) in function of the segment number for the right antenna (dark grey bars) and for the left antenna (white bars) of (a) *O. rufa* females ($N = 14$) and (b) *A. australis* foragers ($N = 14$).

We also looked at possible differences between the right and the left antenna when the segment was not considered as a factor. For *O. rufa*, there was no significant effect of antenna (sphericity assumed, $F_{1,13} = 4.217$, $p = 0.061$) nor the antenna \times type interaction (Greenhouse–Geisser, $F_{2,154,28.006} = 2.031$, $p = 0.147$), but only the effect of the sensilla type was significant (Greenhouse–Geisser, $F_{1,416,18.410} = 976.911$, $p < 0.0001$). For *A. australis*, the differences between the left and right antennae were not significant (sphericity assumed, $F_{1,13} = 0.045$, $p = 0.835$) nor the antenna \times type interaction

(Greenhouse–Geisser, $F_{1.324,17.206} = 1.380$, $p = 0.267$), but only the effect of the sensilla type was significant (Greenhouse–Geisser, $F_{1.545,20.091} = 1982.535$, $p < 0.0001$).

Interestingly, when we looked at possible individual differences between the number of olfactory and non-olfactory sensilla on the two antennae, we found that most individuals of both species showed individual-level asymmetry (Tables 1 and 2). Ten out of 14 individual *O. rufa* showed a significantly higher number of olfactory sensilla (estimated by the two-tailed binomial test, $p < 0.05$) either on the right (two individuals) or the left (eight individuals) antenna (Table 1). Nine of 14 mason bees, six of which were the same individuals that showed individual asymmetry for the olfactory sensilla, had more non-olfactory sensilla either on the right (four individuals) or the left (five individuals) antenna (Table 1).

Six out of 14 individual *A. australis* showed a significantly higher number of olfactory sensilla (estimated by two-tailed binomial test, $p < 0.05$) either on the right (four individuals) or the left (two individuals) antenna (Table 2). The same two individuals that had more olfactory sensilla on the left antenna, also had significantly more non-olfactory sensilla on the left antenna (Table 2).

Table 1. Individual-level lateralization in *O. rufa*. The number of olfactory and non-olfactory sensilla on the left and right antennae of individual mason bees *O. rufa* ($N = 14$) is reported with the corresponding p -values and z-scores of two-tailed binomial tests. The direction of asymmetry is indicated as L (left) or R (right) when statistically significant. The asterisks indicate significant difference: n.s. for $p > 0.05$; * for $p \leq 0.05$; ** for $p \leq 0.01$; *** for $p \leq 0.001$; **** for $p \leq 0.0001$.

Mason Bees <i>O. rufa</i>									
Olfactory Sensilla					Non-Olfactory Sensilla				
Left	Right	2-Tailed Binomial Test	z-Score	Asymmetry Direction	Left	Right	2-Tailed Binomial Test	z-Score	Asymmetry Direction
4559	3715	<0.0001 ****	9.27	L	372	433	0.035 *	-2.11	R
3833	4139	0.0006 ***	-3.42	R	260	371	<0.0001 ****	-4.38	R
4364	4144	0.013 *	2.48	L	316	324	0.779 n.s.	-0.28	
4647	4548	0.307 n.s.	1.02		407	323	0.0021 **	3.07	L
4517	4219	0.0014 **	3.18	L	403	397	0.857 n.s.	0.18	
4473	4077	<0.0001 ****	4.27	L	298	312	0.596 n.s.	-0.53	
4227	4014	0.019 *	2.34	L	329	231	<0.0001 ****	4.10	L
4506	4183	0.00056 **	3.45	L	337	225	<0.0001 ****	4.68	L
3958	3966	0.936 n.s.	-0.08		172	304	<0.0001 ****	-6.00	R
4335	4126	0.024 *	2.26	L	408	402	0.857 n.s.	0.18	
3839	4164	0.0003 ***	-3.62	R	350	223	<0.0001 ****	5.26	L
4672	4477	0.042 *	2.03	L	390	270	<0.0001 ****	4.63	L
4071	4104	0.726 n.s.	-0.35		327	333	0.849 n.s.	-0.19	
4378	4291	0.357 n.s.	0.92		266	360	0.0002 ***	-3.72	R

Table 2. Individual-level lateralization in *A. australis*. The number of olfactory and non-olfactory sensilla on the left and right antennae of individual Australian stingless bees *A. australis* ($N = 14$) is reported with the corresponding p -values and z-scores of two-tailed binomial tests. The direction of asymmetry is indicated as L (left) or R (right) when statistically significant. The asterisks indicate significant difference: n.s. for $p > 0.05$; * for $p \leq 0.05$; ** for $p \leq 0.01$; *** for $p \leq 0.001$; **** for $p \leq 0.0001$.

Australian Stingless Bees <i>A. australis</i>									
Olfactory Sensilla					Non-Olfactory Sensilla				
Left	Right	2-Tailed Binomial Test	z-Score	Asymmetry Direction	Left	Right	2-Tailed Binomial Test	z-Score	Asymmetry Direction
2199	2090	0.099 n.s.	1.65		683	680	0.960 n.s.	0.05	
2639	2662	0.764 n.s.	-0.30		855	826	0.497 n.s.	0.68	
2648	2639	0.912 n.s.	0.11		846	868	0.610 n.s.	-0.51	
2601	2677	0.303 n.s.	-1.03		823	875	0.215 n.s.	-1.24	
2531	2510	0.779 n.s.	0.28		805	818	0.764 n.s.	-0.30	
2674	2576	0.180 n.s.	1.34		819	764	0.174 n.s.	1.36	
2712	2840	0.089 n.s.	-1.70		904	930	0.562 n.s.	-0.58	
2673	2787	0.126 n.s.	-1.53		937	917	0.659 n.s.	0.44	
2524	2756	0.0015 **	-3.18	R	892	910	0.689 n.s.	-0.40	
2831	2394	<0.0001 ****	6.03	L	874	676	<0.0001 ****	5.00	L
2080	2373	<0.0001 ****	-4.38	R	703	711	0.849 n.s.	-0.19	
2765	2523	0.0009 ***	3.31	L	1000	812	0.0001 ****	4.39	L
2406	2711	<0.0001 ****	-4.25	R	876	893	0.704 n.s.	-0.38	
2715	2972	0.0007 ***	-3.39	R	808	856	0.250 n.s.	-1.15	

4. Discussion

We showed that both *O. rufa* and *A. australis* do not show differences at the population level in the number of olfactory and non-olfactory sensilla on the right and the left antennae. However, about half of the individuals of both species presented individual-level asymmetry—some bees had more olfactory (and/or non-olfactory) sensilla on the right antenna and others had more sensilla on the left antenna.

Our results seem to be partially in line with previous findings. In fact, although previous studies found that the right antenna presents on average (i.e., at the population level) a higher number of at least one type of olfactory sensilla compared to the left antenna in the species *A. mellifera* [13], *B. terrestris* [12] and *A. japonicas* Ashmead [19], no significant differences in the number of either olfactory or non-olfactory sensilla between the left and the right antennae were found in *T. carbonaria* [16].

As both *T. carbonaria* and *A. australis* show population level lateralized behavior in the recall of olfactory memories [10], as do honeybees [8], we are tempted to conclude that this behavioral asymmetry cannot be explained by a different number of sensilla on the right compared to the left antenna. Indeed, for honeybees the difference between the number of olfactory receptors between the right and the left antenna is only 5% [13]. It is likely that behavioral asymmetry in the learning and recall of olfactory memories through the circuits of the right and left antenna is due to other functional asymmetries in the way these memories are represented and processed in the brain, as shown in the antennal lobe of *A. mellifera* [15]. Moreover, lateralized behavior may be due to asymmetries in the expression of specific neurotransmitters between the two sides on the nervous system, as suggested by a study by Biswas and colleagues [17], showing that levels of neuroligin-1 expression are higher in honeybees with only their right antenna compared to honeybees with only the left or both antennae [17].

It is also important to consider that the asymmetrical processing of odors may be advantageous to the single individual as this would allow, for example, the learning of new odors with one hemisphere and the keeping of memories of old odors in the other hemisphere [9]; this does not necessarily imply that all the individuals should be aligned in the same direction. Indeed, in our study we showed that about half of the individuals in the population (depending on the species considered) are lateralized at the individual level. The individual asymmetry that we observed in the current study of *O. rufa* matches well with previous findings of individual-level lateralization in the EAG responses [11]. In fact, 15 individuals out of 21 (71%) were found to have significantly stronger responses with either the right (seven individuals) or the left antenna (eight individuals) [11]. Here, 10 out of 14 (71%—exactly the same proportion) of mason bees showed significant asymmetry in the number of olfactory sensilla, and nine out of 14 individuals in the non-olfactory sensilla, regardless of the direction.

An alignment of lateralization within the population has been suggested to be a consequence of social pressure [20] and to arise as an evolutionarily stable strategy when individually asymmetrical organisms must coordinate their behavior with that of other individually asymmetrical organisms within the same species [21,22]. Recently, evidence has started to emerge suggesting that also so-called “non-social” species of insects are lateralized at the population level when biases in social interactions are considered. This is the case for *O. rufa*, a species that does not show behavioral asymmetry in the recall of short-term olfactory memory, but shows population-level lateralization in aggressive displays [23], similarly to eusocial honeybees [24] and social stingless bees *T. carbonaria* [18]. Thus, it is plausible that *A. australis* would also exhibit population-level biases in competitive and/or cooperative interactions with other individuals.

Clearly, it is the possibility of being engaged in interactions with other individuals rather than the way in which the species nests (socially or not) that may affect lateralization. Nonetheless the reason why some species show individual-level or population-level lateralization at the peripheral level, i.e., in the antenna, and what, if any, is the functional significance of this remains at present unexplained. It is possible that morphological asymmetry in the number of olfactory sensilla on the antennae influences the learning process of odors rather than the recall of the memories associated

with these odors. Likewise, an asymmetrical distribution of non-olfactory sensilla may influence other sensory processes and allow parallel processing of different kinds of information in the two sides of the brain.

Acknowledgments: This research was supported by Caritro Foundation to G.V. A special acknowledgement to Lesley J. Rogers for providing the Australian specimens and for inviting us to contribute to this special issue, to Federico Piccoli, Department of Medicine Laboratory, APSS, Trento for the technical support with the scanning electron microscopy, and to Gianfranco Anfora, IASMA Research and Innovation Center, Fondazione E. Mach, for his help in identifying the sensilla types.

Author Contributions: E.F. and G.V. conceived and designed the experiments; E.F. performed the experiments; E.F. analyzed the data; E.F. and G.V. wrote the paper.

Conflicts of Interest: The authors declare no conflict of interest.

References

1. Rogers, L.J.; Vallortigara, G.; Andrew, R. *Divided Brains: The Biology and Behaviour of Brain Asymmetries*, 1st ed.; Cambridge UP: Cambridge, UK, 2013.
2. Frasnelli, E.; Vallortigara, G.; Rogers, L.J. Left-right asymmetries of behavioural and nervous system in invertebrates. *Neurosci. Biobehav. Rev.* **2012**, *36*, 1273–1291.
3. Rubens, A.B.; Mahowald, M.W.; Hutton, J.T. Asymmetry of the lateral (sylvian) fissures in man. *Neurology* **1976**, *26*, 620–624.
4. Heuts, B.A. Lateralization of trunk muscle volume, and lateralization of swimming turns of fish responding to external stimuli. *Behav. Process* **1999**, *47*, 113–124.
5. Kawakami, R.; Shinohara, Y.; Kato, Y.; Sugiyama, H.; Shigemoto, R.; Ito, I. Asymmetric allocation of NMDA receptor $\epsilon 2$ subunits in hippocampal circuitry. *Science* **2003**, *300*, 990–994.
6. Letzkus, P.; Ribí, W.A.; Wood, J.T.; Zhu, H.; Zhang, S.-W.; Srinivasan, M.V. Lateralization of olfaction in the Honeybee *Apis mellifera*. *Curr. Biol.* **2006**, *16*, 1471–1476.
7. Sandoz, J.C.; Menzel, R. Side-specificity of olfactory learning in the honeybee: Generalization between odours and sides. *Learn. Mem.* **2001**, *8*, 286–294.
8. Rogers, L.J.; Vallortigara, G. From antenna to antenna: Lateral shift of olfactory memory recall by honeybees. *PLoS ONE* **2008**, *3*, e2340.
9. Frasnelli, E.; Vallortigara, G.; Rogers, L.J. Response competition associated with right-left antennal asymmetries of new and old olfactory memory traces in honeybees. *Behav. Brain Res.* **2010**, *209*, 36–41.
10. Frasnelli, E.; Vallortigara, G.; Rogers, L.J. Right-left antennal asymmetry of odour memory recall in three species of Australian stingless bees. *Behav. Brain Res.* **2011**, *224*, 121–127.
11. Anfora, G.; Frasnelli, E.; Maccagnani, B.; Rogers, L.J.; Vallortigara, G. Behavioural and electrophysiological lateralization in a social (*Apis mellifera*) but not in a non-social (*Osmia cornuta*) species of bee. *Behav. Brain Res.* **2010**, *206*, 236–239.
12. Anfora, G.; Rigosi, E.; Frasnelli, E.; Ruga, V.; Trona, F.; Vallortigara, G. Lateralization in the invertebrate brain: Left-right asymmetry of olfaction in Bumble bee, *Bombus terrestris*. *PLoS ONE* **2011**, *6*, e18903.
13. Frasnelli, E.; Anfora, G.; Trona, F.; Tessarolo, F.; Vallortigara, G. Morpho-functional asymmetry of the olfactory receptors of the honeybee (*Apis mellifera*). *Behav. Brain Res.* **2010**, *209*, 221–225.
14. Guo, Y.; Wang, Z.; Li, Y.; Wei, G.; Yuan, J.; Sun, Y.; Wang, H.; Qin, Q.; Zeng, Z.; Zhang, S.; et al. Lateralization of gene expression in the honeybee brain during olfactory learning. *Sci. Rep.* **2016**, *6*, 34727.
15. Rigosi, E.; Haase, A.; Rath, L.; Anfora, G.; Vallortigara, G.; Szyszka, P. Asymmetric neural coding revealed by in vivo calcium imaging in the honey bee brain. *Proc. R. Soc. B* **2015**, *282*, 20142571.
16. Galizia, C.G.; Nägler, K.; Hölldobler, B.; Menzel, R. Odour coding is bilaterally symmetrical in the antennal lobes of honey bees (*Apis mellifera*). *Eur. J. Neurosci.* **1998**, *10*, 2964–2974.
17. Biswas, S.; Reinhard, J.; Oakeshott, J.; Russell, R.; Srinivasan, M.V.; Claudianos, C. Sensory regulation of neuroligins and neurexin I in the honeybee brain. *PLoS ONE* **2010**, *5*, e9133.
18. Rogers, L.J.; Frasnelli, E. Antennal asymmetry in social behavior of the Australian stingless bee, *Tetragonula carbonaria*. *J. Insect Behav.* **2016**, *29*, 491–499.
19. Meng, Z.J.; Yan, S.C.; Yang, C.P.; Ruan, C.C. Asymmetrical distribution of antennal sensilla in the female *Anastatus japonicus* Ashmead (Hymenoptera: Eupelmidae). *Microsc. Res. Tech.* **2012**, *75*, 1066–1075.

20. Vallortigara, G.; Rogers, L.J. Survival with an asymmetrical brain: Advantages and disadvantages of cerebral lateralization. *Behav. Brain Sci.* **2005**, *28*, 575–633.
21. Ghirlanda, S.; Vallortigara, G. The evolution of brain lateralization: A game theoretical analysis of population structure. *Proc. R. Soc. Lond. B* **2004**, *271*, 853–857.
22. Ghirlanda, S.; Frasnelli, E.; Vallortigara, G. Intraspecific competition and coordination in the evolution of lateralization. *Phil. Trans. R. Soc. Lond. B* **2009**, *364*, 861–866.
23. Rogers, L.J.; Frasnelli, E.; Versace, E. Lateralized antennal control of aggression and sex differences in red mason bees, *Osmia bicornis*. *Sci. Rep.* **2016**, *6*, 29411.
24. Rogers, L.J.; Rigosi, E.; Frasnelli, E.; Vallortigara, G. A right antenna for social behaviour in honeybees. *Sci. Rep.* **2013**, *3*, 2045.



© 2017 by the authors. Licensee MDPI, Basel, Switzerland. This article is an open access article distributed under the terms and conditions of the Creative Commons Attribution (CC BY) license (<http://creativecommons.org/licenses/by/4.0/>).