

Response to 'Peptidyl arginine deiminase type IV (PADI4) haplotypes interact with shared epitope regardless of anti-cyclic citrullinated peptide antibody or erosive joint status in rheumatoid arthritis: a case control study'

journal or publication title	Arthritis Research & Therapy
volume	16
number	5
page range	422
year	2014-08-27
URL	http://hdl.handle.net/10470/30836

doi: 10.1186/s13075-014-0422-3

LETTER

Open Access

Response to 'Peptidyl arginine deiminase type IV (PADI4) haplotypes interact with shared epitope regardless of anti-cyclic citrullinated peptide antibody or erosive joint status in rheumatoid arthritis: a case control study'

Katsunori Ikari*, Koichiro Yano, Shinji Yoshida, Atsuo Taniguchi, Hisashi Yamanaka and Shigeki Momohara

Rheumatoid arthritis (RA) is a complex polygenic disease characterized by progressive joint destruction. Anti-citrullinated peptide antibody (ACPA) is the most specific autoantibody for RA. Genetic polymorphisms in the *PADI4* gene, encoding citrullinating enzyme peptidylarginine deiminase 4 (PADI4), have been associated with susceptibility to RA [1,2]. They have also been reported to be associated with radiographic joint destruction in patients with RA [3,4]. We focused on ACPA-negative RA patients to investigate whether a *PADI4* polymorphism is associated with joint damage in ACPA-negative patients.

DNA samples from 122 Japanese ACPA-negative RA patients were used for the study; 81.1% were female, 51.6% were rheumatoid factor (RF)-positive, and the mean age was 55 years. Sharp/van der Heijde score of the hands at a 5-year disease duration, which represents joint damage, was scored and log-transformed as described elsewhere [4]. Single-nucleotide polymorphism (SNP) rs2240340 was selected and genotyped by using a TaqMan method as described elsewhere [4]. The genetic risk of joint damage associated with rs2240340 was assessed by multiple regression analysis adjusted for HLA-DRB1 shared-epitope alleles and RF that are thought to be associated with joint damage in patients with RA [4].

The *PADI4* SNP was significantly associated with radiographic joint destruction in the ACPA-negative RA patients in a recessive model ($P = 0.0287$) (Table 1 and Figure 1). The overall genotyping success rate was 99.2% and the genotype concordance rate was 100% as assessed by duplicate samples. Although the sample size is one of the major limitations to the study of ACPA-negative patients because of the high positivity of ACPA (up to 90%) in RA populations, we were able to collect DNA samples from 122 ACPA-negative RA patients with radiographic data.

PADI4 encodes citrullinating enzymes that may play an important role in ACPA formation. It has been shown that *PADI4* alleles were associated with the presence of ACPA in patients with RA [1]. In the present study, we have shown that *PADI4* polymorphism contributes to joint destruction in ACPA-negative RA patients. A recent study has suggested that *PADI4* gene contributes to the development of RA, regardless of ACPA status [3]. We have also reported that the *PADI4* risk allele has an impact on joint damage after adjustment for ACPA status [4]. The *PADI4* gene is likely to play a role in the disease progression of RA in addition to its role in ACPA formation. The results of this study provide important knowledge of the risks on progressive joint damage in patients with RA.

* Correspondence: kikari@twmu.ac.jp

Institute of Rheumatology, Tokyo Women's Medical University, 10-22 Kawada, Shinjuku, Tokyo 162-0054, Japan

Table 1 Association of PADI4 SNP (recessive model) with Sharp/van der Heijde score of hands at 5-year disease duration in ACPA-negative RA patients

Factor	Beta (95% CI)	P value
rs2240340, PADI4	0.72 (0.08-1.36)	0.0287
HLA-DRB1 SE	0.36 (0.01-0.73)	0.0587
RF	0.54 (0.05-1.02)	0.0316

ACPA, Anti-citrullinated peptide antibody; CI, Confidence interval; PADI4, Peptidyl arginine deiminase type IV; RA, Rheumatoid arthritis; RF, Rheumatoid factor; SE, Shared epitope; SNP, Single-nucleotide polymorphism.

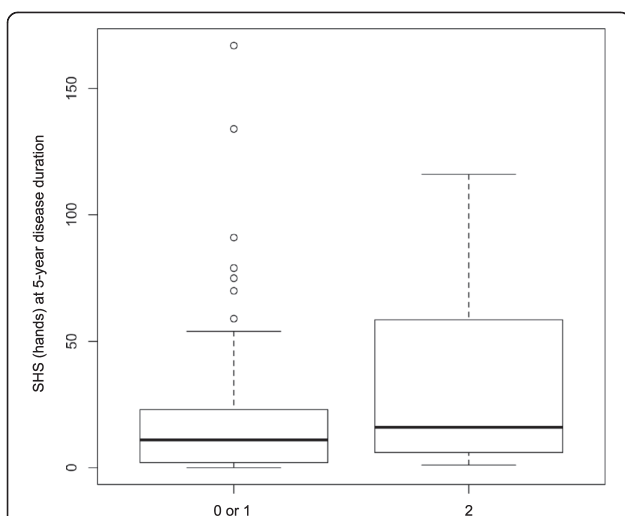


Figure 1 Boxplots representing the distribution of Sharp/van der Heijde score of hands at 5-year disease duration according to the number of the susceptibility allele of rs2240340 (minor allele, A) in the PADI4 locus. Each box represents the interquartile range of values, and the bold line shows the median value. The vertical lines show maximum and minimum values that fall within 1.5 box lengths, and the open circles show extreme values of more than 1.5 boxplot lengths. PADI4, peptidylarginine deiminase 4; SHS, Sharp/van der Heijde score.

Abbreviations

ACPA: Anti-citrullinated peptide antibody; PADI4: Peptidylarginine deiminase 4; RA: Rheumatoid arthritis; RF: Rheumatoid factor; SNP: Single-nucleotide polymorphism.

Competing interests

The authors declare that they have no competing interests.

Acknowledgments

This work was supported by grants provided by the Japanese Ministry of Education, Culture, Sports, Science and Technology Grant-in-Aid for Scientific Research (to KI) and the Japanese Ministry of Health, Labour and Welfare (to SM and HY). We thank all DNA donors for making this study possible. We appreciate the members of Institute of Rheumatology of the Tokyo Women's Medical University for their effort in the Institute of Rheumatology Rheumatoid Arthritis (IORRA) cohort. We are grateful to Noriko Iikuni for her assistance in preparing the manuscript and to Yuta Kochi and Akari Suzuki for their advice.

References

1. Suzuki A, Yamada R, Chang X, Tokuhiko S, Sawada T, Suzuki M, Nagasaki M, Nakayama-Hamada M, Kawaida R, Ono M, Ohtsuki M, Furukawa H, Yoshino S, Yukioka M, Tohma S, Matsubara T, Wakitani S, Teshima R, Nishioka Y, Sekine A, Iida A, Takahashi A, Tsunoda T, Nakamura Y, Yamamoto K: **Functional haplotypes of PADI4, encoding citrullinating enzyme peptidylarginine deiminase 4, are associated with rheumatoid arthritis.** *Nat Genet* 2003, **34**:395-402.
2. Okada Y, Wu D, Trynka G, Raj T, Terao C, Ikari K, Kochi Y, Ohmura K, Suzuki A, Yoshida S, Graham RR, Manoharan A, Ortmann W, Bhangale T, Denny JC, Carroll RJ, Eyler AE, Greenberg JD, Kremer JM, Pappas DA, Jiang L, Yin J, Ye L, Su DF, Yang J, Xie G, Keystone E, Westra HJ, Esko T, Metspalu A, *et al*: **Genetics of rheumatoid arthritis contributes to biology and drug discovery.** *Nature* 2014, **506**:376-381.
3. Bang SY, Han TU, Choi CB, Sung YK, Bae SC, Kang C: **Peptidyl arginine deiminase type IV (PADI4) haplotypes interact with shared epitope regardless of anti-cyclic citrullinated peptide antibody or erosive joint status in rheumatoid arthritis: a case control study.** *Arthritis Res Ther* 2010, **12**:R115.
4. Suzuki T, Ikari K, Yano K, Inoue E, Toyama Y, Taniguchi A, Yamanaka H, Momohara S: **PADI4 and HLA-DRB1 are genetic risks for radiographic progression in RA patients, independent of ACPA status: results from the IORRA cohort study.** *PLoS One* 2013, **8**:e61045.

doi:10.1186/s13075-014-0422-3

Cite this article as: Ikari *et al*: Response to 'Peptidyl arginine deiminase type IV (PADI4) haplotypes interact with shared epitope regardless of anti-cyclic citrullinated peptide antibody or erosive joint status in rheumatoid arthritis: a case control study'. *Arthritis Research & Therapy* 2014 **16**:422.