

Clark University Clark Digital Commons

Mosakowski Institute for Public Enterprise

Academic Departments, Centers & Programs

Winter 12-1-2016

Data Profiles-Rhode Island-Newport

John C. Brown
Clark University

Richard A. Ramsawak
Clark University

James R. Gomes
Clark University

Recommended Citation

Brown, John C.; Ramsawak, Richard A.; and Gomes, James R., "Data Profiles-Rhode Island-Newport" (2016). *Mosakowski Institute for Public Enterprise*. 75.
<https://commons.clarku.edu/mosakowskiinstitute/75>

This Article is brought to you for free and open access by the Academic Departments, Centers & Programs at Clark Digital Commons. It has been accepted for inclusion in Mosakowski Institute for Public Enterprise by an authorized administrator of Clark Digital Commons. For more information, please contact mkrikonis@clarku.edu, jodolan@clarku.edu.

Data Profiles-Rhode Island-Newport

Abstract

We continue support the Federal Bank of Boston “Working Cities” challenge which aims to support social and economic recovery of underperforming small and mid-sized cities in the New England region. We continue to extend our data profiles of these cities located in Massachusetts, Rhode Island and now Connecticut. It is our hope that these data ‘rich” profiles which includes key indicators on health, population and demographic changes, industrial growth, and educational performance can not only support policy development in these targeted areas, but also help in monitoring the progress these cities make over time.

Keywords

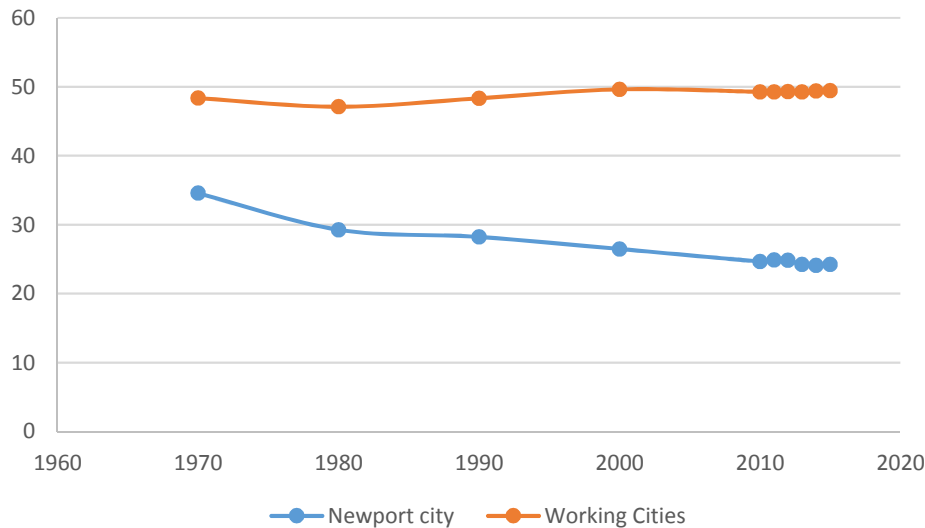
Working Cities, Mosakowski Institute, Clark University, Data Profiles, Rhode Island, Newport

Follow this and additional works at: <https://commons.clarku.edu/mosakowskiinstitute>

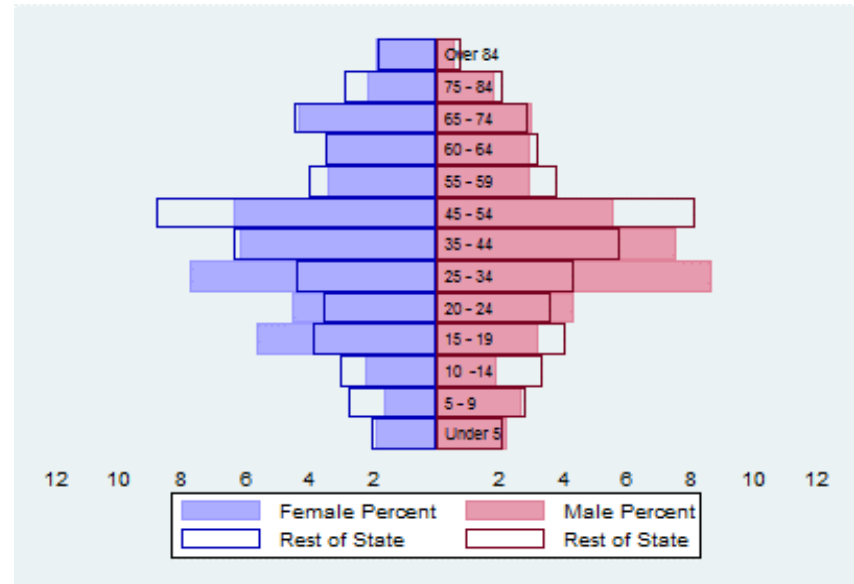


Part of the [Economic Policy Commons](#), [Education Policy Commons](#), [Growth and Development Commons](#), [Health Economics Commons](#), [Health Policy Commons](#), [Human Geography Commons](#), [Public Affairs Commons](#), [Public Economics Commons](#), [Public Policy Commons](#), [Social Statistics Commons](#), [Urban Studies Commons](#), and the [Urban Studies and Planning Commons](#)

The Population City Population 1970 to 2014



Population Distribution by Age Group



Population Distribution by Race and Ethnicity

Subgroups of the population as a percentage of the total	2000	2013	Working Cities 2013	State 2013
White	81.7	79.6	73.7	75.7
Black	7.2	5.5	5.0	5.3
Asian	1.3	1.1	3.2	3.0
Foreign-Born	5.6	8.9	13.9	13.1
Hispanic	5.5	9.3	15.1	12.9
Origin as percent of Hispanic				
Central America	6.2	37.5	14.6	17.3
Dominican Republic	4.9	2.4	9.4	17.1
Mexico	15.5	0.2	2.6	2.6
Puerto Rico	42.7	24.1	10.3	9.8

Recent Demographic Behavior

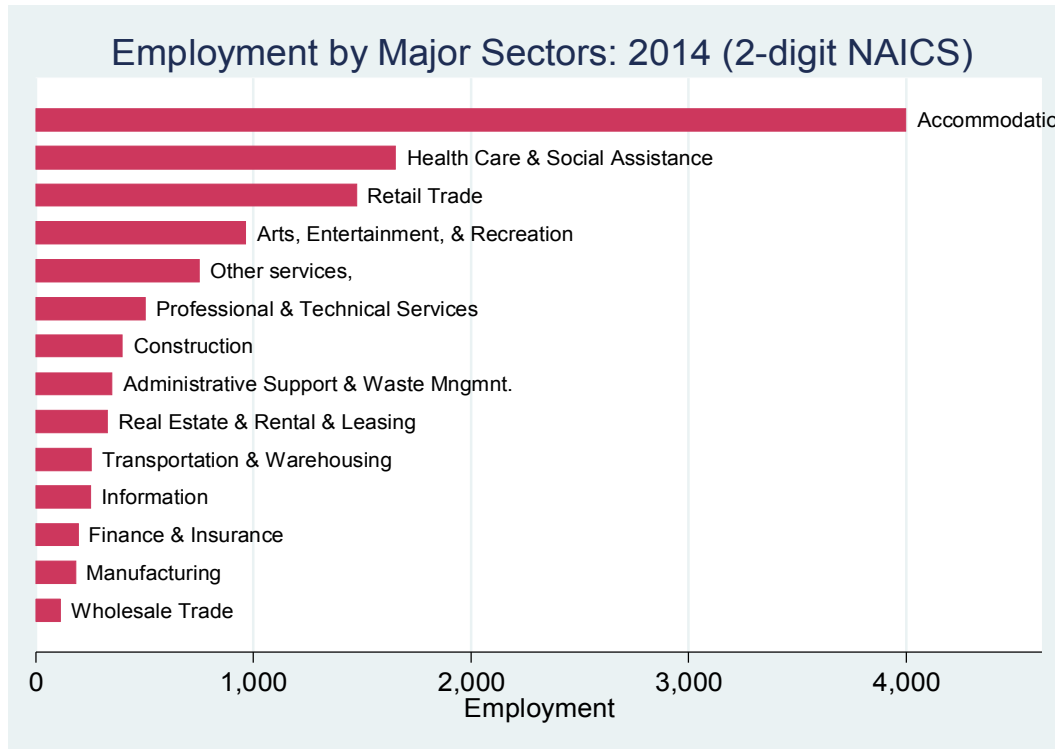
Indicator	Newport	Working Cities	State
Birth Rate (per 1,000 females 15-44)	50.2	57.8	59.6
Low birthweight (<2.5 kg. % of births)	6.1	8.6	7.9
Births to teen mothers (15-19 years)†	8.5	10.9	9.0
Birth rate of teen mothers‡	1.8	3.7	2.9
Infant mortality (per 1,000 live births)	5.1	6.1	6.4
Mortality rate (per 100,000 residents)	840.0	938.0	950.0

†As percent of all births

‡Per 1,000 females aged 15-19 years

The Local Economy

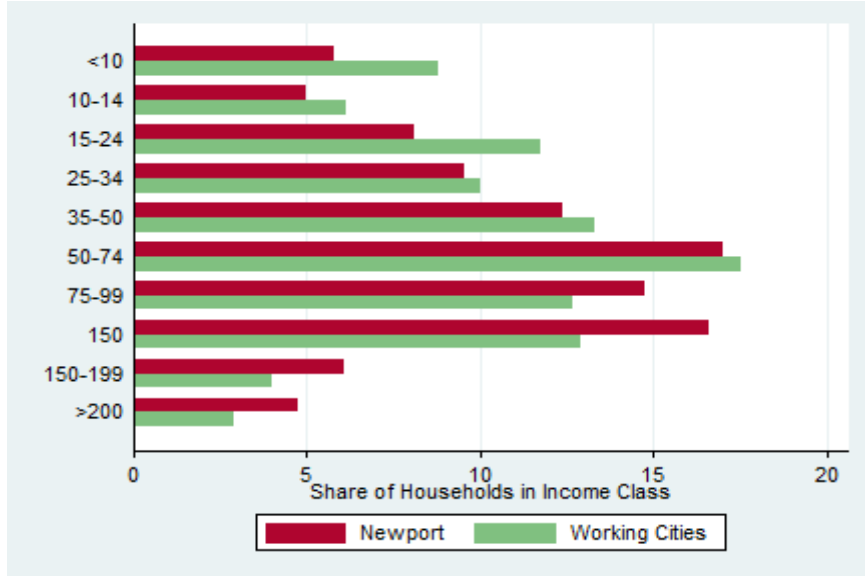
Employment by Major Sectors: 2012 (2-digit NAICS)



The Five Largest Industries: 2012 (4-digit NAICS Industries)

Description	NAICS	Employees
Restaurants	7225	1000-2499
Traveler accommodation	7211	1000-2499
General medical and surgical hospitals	6221	500-999
Computer systems design and services	5415	500-999
Clothing stores	4481	250-499

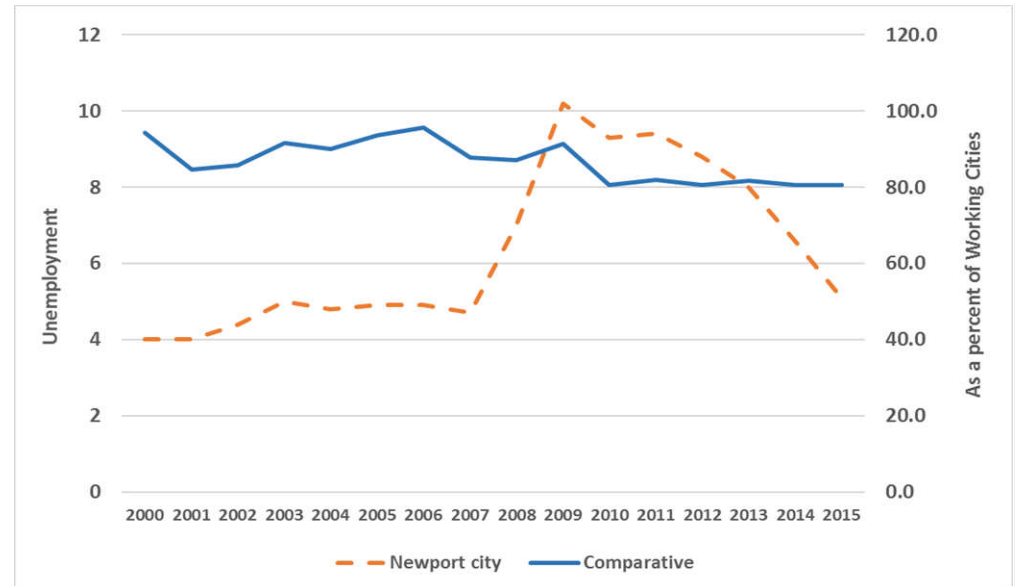
Distribution of Households by Income Class (in \$1,000)



Key Indicators of Income and Commuting

Indicator	Newport	Working Cities
Median Family Income (\$)	60,533	50,837
Families below Poverty Line (%)	3.2	7.2
Children < 18 below Poverty Line (%)	1.2	2.0
Families with Food Assistance (%)	11.0	17.1
Commute with Public Transit (%)	2.6	2.6

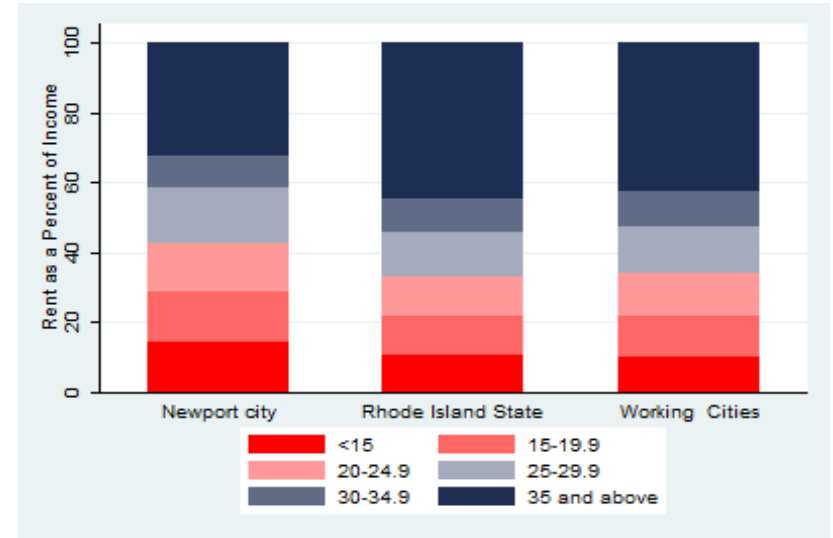
Unemployment Rate: 2000-2015



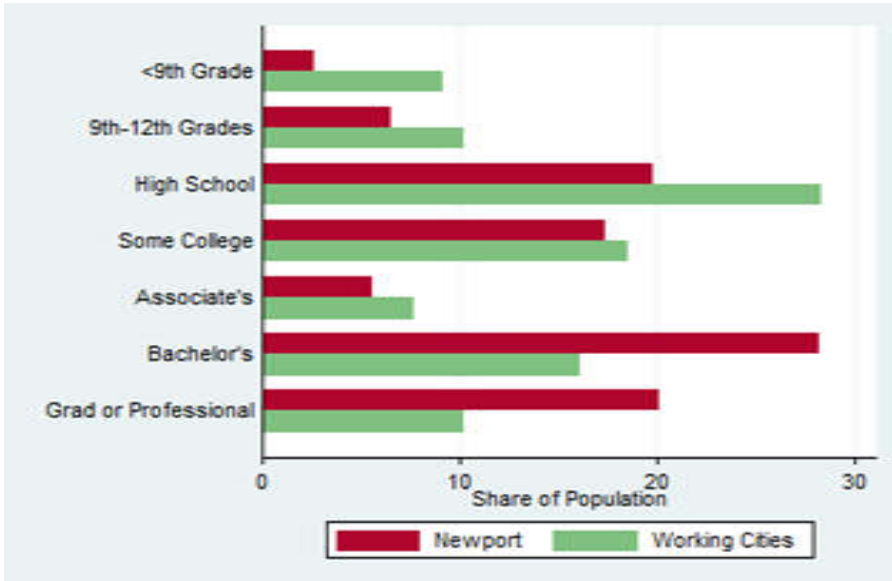
Housing

Housing Market Indicators in 2013

Indicator	Newport	Working Cities	State
Share owner-occupied	43.7	54.7	61.2
Median Home Value	387,100	226,192	247,400
Average Size of Owner-Occupied Households	2.1	2.6	2.6
Average Size of Tenant Households	2.1	2.2	2.2



Educational Attainment of the Population Aged 25 and Older



Mortality and Health

	Newport	Working Cities
Lung Cancer Deaths (per 100,000)	45.4	60.8
Cardiovascular Disease Deaths (per 100,000)	290.3	270.1
HIV/AIDS Prevalence Rate (per 100,000)	255.4	238.5
Opioids Overdose Deaths (per 100,000)	0.0	23.3
Admissions to DPH Substance Abuse Programs (per 100,000)	7445.1	6771.4
Hospital Discharges for Asthma (per 100,000)	157.6	159.9

2014

Civic Engagement

Voting Behaviour in 2014

	Newport city	Working Cities
Registered Voters as a percent of registered Voters	68.2	85.6
Voters in 2014 election as percent of registered voters	110.7	65.2
Voters in 2014 election as percent of population aged 18 and above	75.5	55.8

Not-for-Profit Sector

Indicator (in \$ per capita)	Newport	Working Cities	State
Assets of Education, Finance and Medical Non-Profits	30,086.79	11,450.84	16,053.18
Assets of Other Non-Profits	29,260.23	10,384.89	45,501.65
Revenue of Education, Finance and Medical Non-Profits	13,638.24	4,966.32	6,117.99
Revenue of Other Non-Profits	8,844.19	4,067.27	25,333.23

Other Non-Profits

Name	Revenues	Assets	Area
VAN BEUREN CHARITABLE FOUNDATION INC	17.2	200.9	Philanthropy
INTERNATIONAL TENNIS HALL OF FAME INCORPORATED	14.2	60.3	Arts&Culture
PRESERVATION SOCIETY OF NEWPORT COUNTY	22.2	49.8	Arts&Culture
NEWPORT RESTORATION FOUNDATION	4.8	33.2	Arts&Culture
CHURCH COMMUNITY HOUSING CORPORATION	2.1	18.3	Housing
SVF FOUNDATION	2.5	17.7	Animal
INTERNATIONAL YACHT RESTORATION SCHOOL INC	4.2	15.0	Sports
EAST BAY COMMUNITY ACTION PROGRAM	19.9	14.3	Human Services
SANDYWOODS HOMES INC	0.7	13.7	Housing
ROBERT POTTER LEAGUE FOR ANIMALS INC	1.9	10.8	Animal
EJMP FUND FOR PHILANTHROPY	0.4	10.7	Philanthropy
NEWPORT ART MUSEUM AND ART ASSOCIATION	1.4	7.5	Arts&Culture
LBB CORP	2.3	7.2	Housing
NEWPORT COUNTRY CLUB	2.5	7.1	Sports
FNZ FOUNDATION INC	-0.1	6.1	Philanthropy
JAMES L MAHER CENTER	13.2	5.9	Human Services
NEWPORT HEALTH PROPERTY MANAGEMENT INC	1.5	5.5	Community Improvement
SPOUTING ROCK BEACH ASSOCIATION	2.5	5.5	Sports
THE STANFORD WHITE CASINO THEATRE	0.0	5.0	Arts&Culture
CLAMBAKE CLUB OF NEWPORT	0.6	4.3	Sports
SEAMENS CHURCH INSTITUTE OF NEWPORT R I	0.7	4.2	Sports
NEWPORT HISTORICAL SOCIETY	1.5	3.9	Arts&Culture
AMERICAN CIVILIZATION FOUNDATION	0.3	3.5	Arts&Culture
BOYS CLUBS & GIRLS CLUBS OF NEWPORT COUNTY INC	1.3	3.4	Youth Development