

2016

Data Profiles - Chelsea

Mosakowski Institute
Clark University

John C. Brown
Clark University

Joe Krahe
Clark University

Sarah Philbrick
Clark University

Recommended Citation

Mosakowski Institute; Brown, John C.; Krahe, Joe; and Philbrick, Sarah, "Data Profiles - Chelsea" (2016). *Mosakowski Institute for Public Enterprise*. 61.
<https://commons.clarku.edu/mosakowskiinstitute/61>

This Article is brought to you for free and open access by the Academic Departments, Centers & Programs at Clark Digital Commons. It has been accepted for inclusion in Mosakowski Institute for Public Enterprise by an authorized administrator of Clark Digital Commons. For more information, please contact mkrikonis@clarku.edu, jodolan@clarku.edu.

Data Profiles - Chelsea

Keywords

data profiles, chelsea, gateway cities, working cities

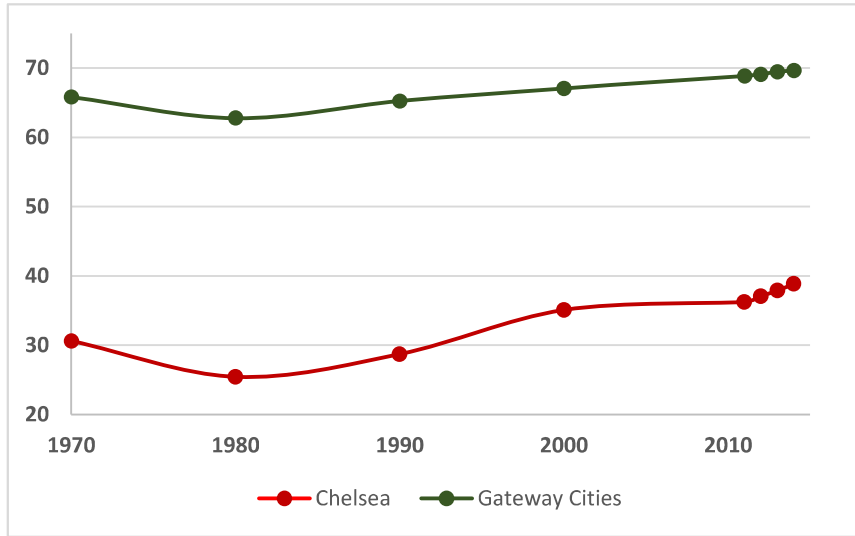


Chelsea

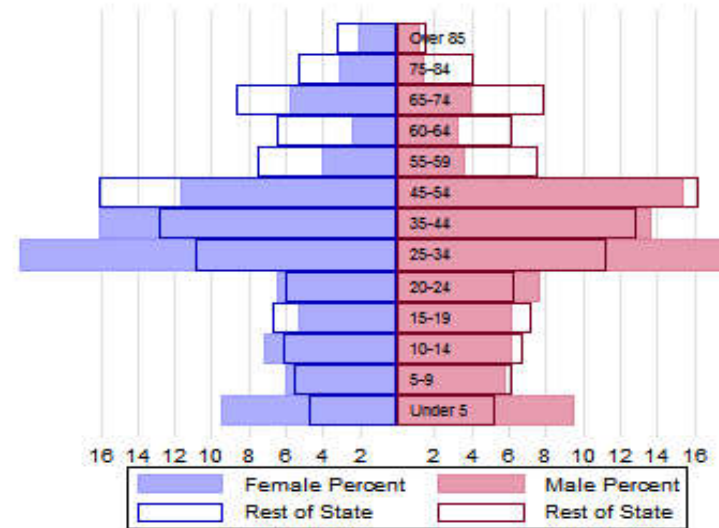


The Population

City Population 1970 to 2014



Population Distribution by Age Group



Population Distribution by Race and Ethnicity

Subgroups of the population as a percent of the total	2000	2013	Gateway Cities 2013	State 2013
White	57.9	48.7	73.8	89.0
Black	7.3	6.3	8.0	2.8
Asian	4.7	3.2	5.3	4.8
Foreign-born	36.1	43.7	19.9	12.1
Hispanic	48.4	62.1	19.6	4.3
Origin as percent of Hispanic				
Central America	35.4	58.0	15.8	20.3
Dominican Republic	3.1	3.5	14.4	17.9
Mexico	3.9	4.6	5.5	11.4
Puerto Rico	31.6	20.4	45.5	33.6

Recent Demographic Behavior

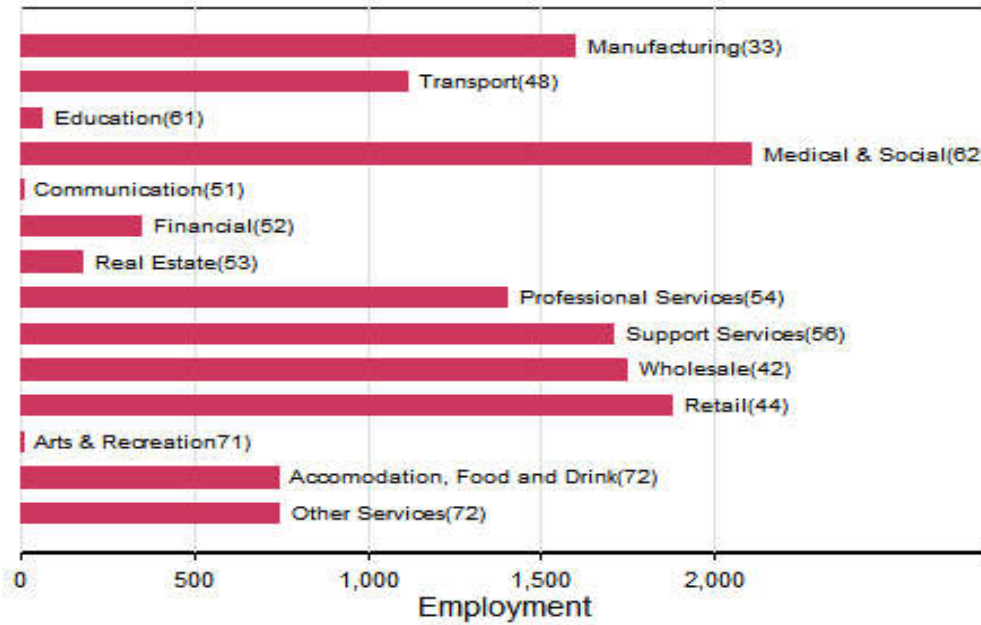
Indicator	Chelsea	Gateway Cities	State
Birth Rate (per 1,000 females 15-44)	74.6	62.1	52.8
Low birthweight (<2.5 kg. % of births)	8.9	8.0	7.7
Births to teen mothers (15-19 years)†	8.4	6.0	3.8
Birth rate of teen mothers‡	-	22.3	12.0
Infant mortality (per 1,000 live births)	4.6	4.9	4.4
Mortality rate (per 100,000 residents)	745.3	844.9	800.0

†As percent of all births

‡Per 1,000 females aged 15-19 years

The Local Economy

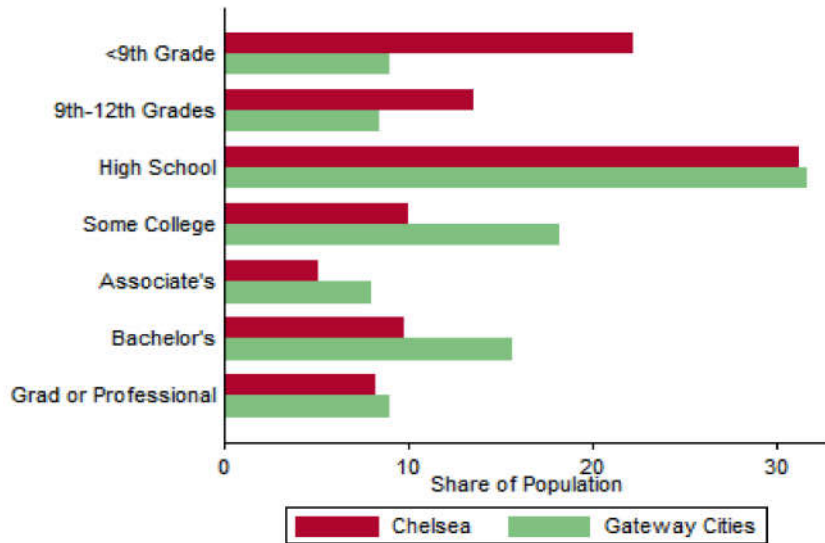
Employment by Major Sectors: 2012 (2-digit NAICS)



The Five Largest Industries: 2012 (4-digit NAICS industries)

Description	NAICS	Employment
Grocery Wholesalers	4244	1000-2499
Consulting Services	5416	1000-2499
Employment Services	5613	1000-2499
Grocery Stores	4451	1000-2499
Restaurants	7225	500-999

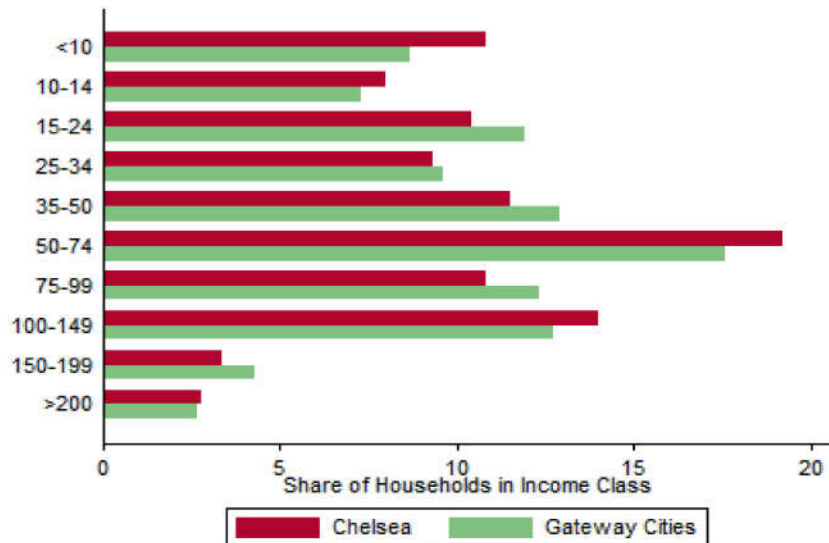
Educational Attainment of the Population Aged 25 and Older



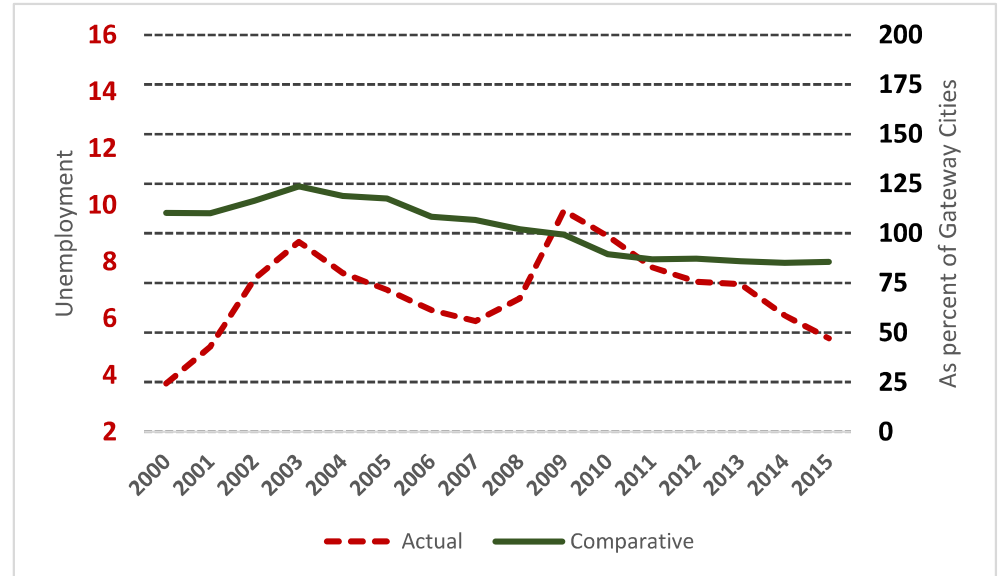
Key Indicators of Income and Commuting

Indicator	Chelsea	Gateway Cities
Median Family Income (\$)	50,056	60,087
Families below Poverty Line (%)	18.1	14.3
Children < 18 below Poverty Line (%)	27.9	25.5
Families with Food Assistance (%)	33.0	20.8
Mean Travel Time to Work (Mins.)	29.3	26.4
Commute with Public Transit (%)	24.5	8.6

Distribution of Households by Income Class (in \$1,000)



Unemployment Rate: 2000-2015



Housing

Housing Market Indicators in 2013

Indicator	Chelsea	Gateway Cities	State
Share owner-occupied	0.29	0.50	0.62
Median Home Value	259,300	252,085	325,800
Average Rent for Studio	1143	735	746
Average Rent for One-Bedroom	631	786	765
Average Rent for Two-Bedroom	1184	1097	926
Average Rent for Three-Bedroom	1319	1182	863
Average Size of Owner-Occupied Households	3.12	2.68	2.25
Average Size of Tenant Households	2.88	2.38	2.70

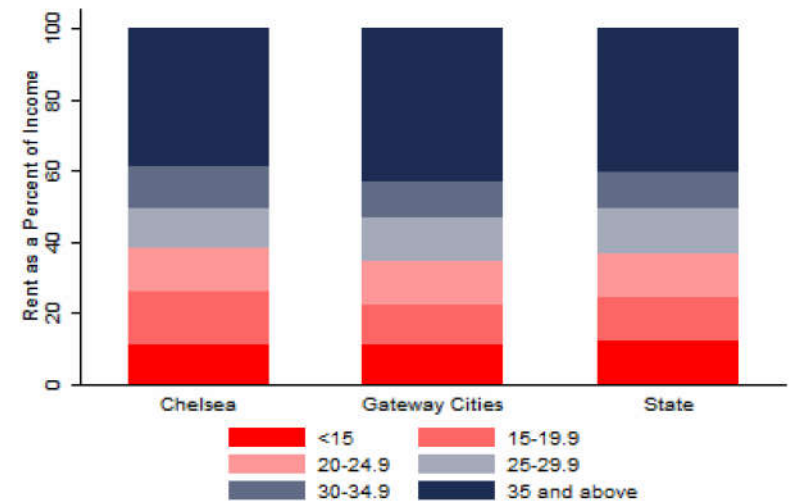
Education

Indicators for 2014

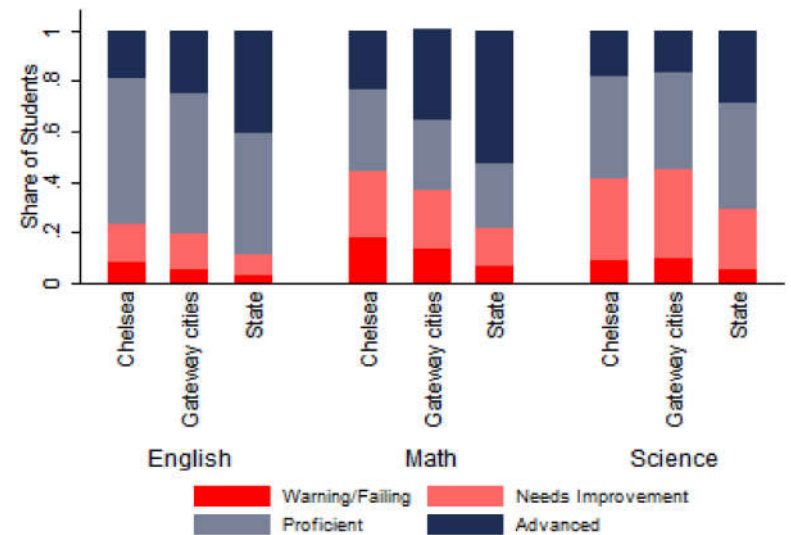
Indicator	Chelsea	Gateway Cities	State
Average class size	21.4	18.3	18.1
Percent Proficient or Advanced (English 10th)	77.0	80.3	90.0
Percent Proficient or Advanced (Math 10th)	56.0	63.4	79.0
Student Growth Percentile English (10th)	47.5	43.7	51.0
Student Growth Percentile Math (10th)	30.0	43.4	50.0
Graduates attending college or university†	61.4	69.7	76.6
Male Dropout Rate	17.4	11.8	6.7
Female Dropout Rate	13.1	7.9	4.4
English Language Learners Dropout Rate	28.8	16.8	14.9
Low Income Dropout Rate	15.9	11.8	10.2

†Percent of 2013 class

Housing Affordability



10th Grade MCAS Scores in 2014



Mortality and Health

	Chelsea	Gateway Cities	State
Lung Cancer Deaths (per 100,000 people) †	45.3	61.3	54.1
Cardiovascular Disease Deaths (per 100,000) †	209.7	254.7	237.4
Opioid Overdose Deaths (per 100,000)‡	7.7	25.5	13.0
HIV/Aids Prevalence Rate (per 100,000 people) 2010†	524.5	317.0	282.3
Admissions to DPH Substance Abuse Programs (per 100,000 people) ‡	1978	2189	1568
Hospital Discharges for Asthma (per 100,000) 2009	184.2	208.8	162.0
Percent overweight or obese children in grade 10 ‡		38.2	32.3
Percent of population on some form of non-private insurance 2013	53.0	36.1	17.2

†2010

‡2014

Civic Engagement

Voting Behavior in 2014

Indicator	Chelsea	Gateway Cities	State
Registered voters as percent of population aged 18 and above	51.7	75.1	76.0
Voters in 2014 election as percent of registered voters	36.2	43.5	72.7
Voters in 2014 election as percent of population aged 18 and above	18.7	32.8	55.2

Not-for-Profit Sector

Indicator (in \$ per capita)	Chelsea	Gateway Cities	State
Assets of Education, Finance, and Medical Non-Profits	37,393	10,152	27,527
Assets of Other Non-Profits	2,311	5,530	18,501
Revenue of Education, Finance, and Medical Non-Profits	2,926	4,361	10,472
Revenue of Other Non-Profits	2,379	3,050	10,589

Major Nonprofits in Education, Finance and Health Services (in \$millions)

Name	Revenues	Assets	Area
Metropolitan Credit Union	58.32	1279.78	Financial
Chelsea Jewish Green House Inc	23.99	47.97	Healthcare
Chelsea Jewish Nursing Home Inc	11.50	8.55	Healthcare
Chelsea Revere Winthrop Home Care Center Inc	9.87	2.36	Healthcare
Massachusetts State Employees Credit Union	2.55	0.00	Financial
Chelsea Jewish Nursing Home Foundation Inc	1.48	40.79	Healthcare
Fenwal Credit Union	0.07	1.61	Financial

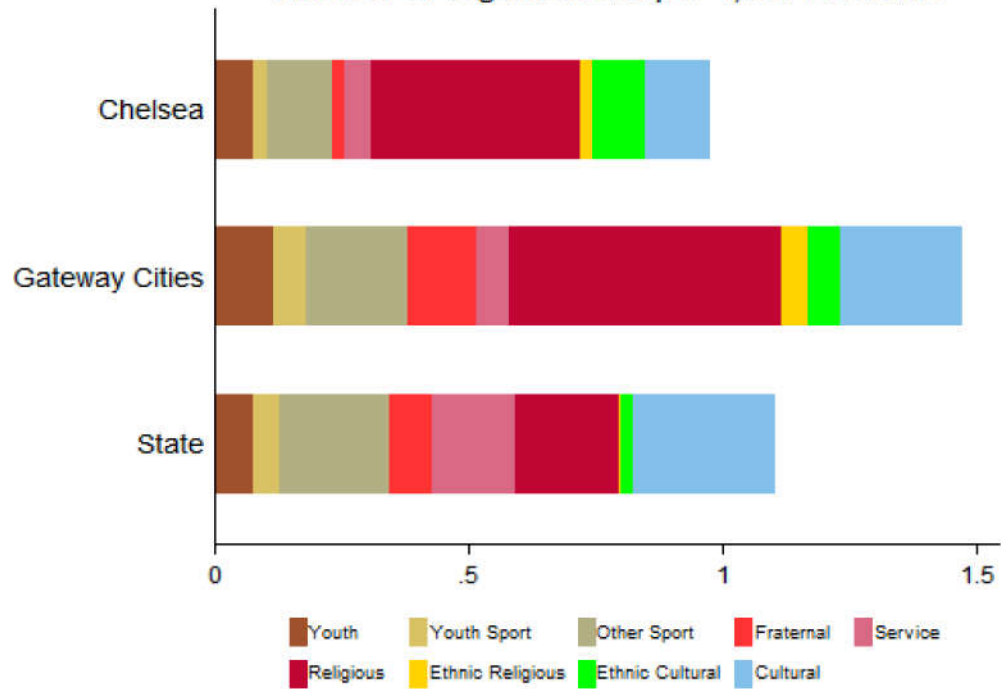
Other Nonprofits (in \$millions)

Name	Revenues	Assets	Area
North Suffolk Mental Health Association Inc	45.00	17.80	Mental Health
Community Action Programs Inter-City Inc	10.63	1.34	Human Services
Roca Inc	8.91	12.03	Human Services
Chelsea Jewish Community Inc	6.61	4.60	Religion-Related
The Neighborhood Developers Inc	3.06	19.85	Housing
Harborcov Inc	1.52	2.81	Human Services
Chelsea Collaborative Inc	1.30	0.95	Human Services
Centro Latino Inc	1.25	0.25	Human Services
Phoenix Charter Academy Foundation	1.01	1.07	Education
Chelsea Restoration Corporation	0.75	2.06	Housing
Kangaroos Pouch Inc	0.63	0.29	Human Services
Al-Huda Society	0.54	2.14	Religion-Related
Community Action Programs-Inter City Real Estate Corporation	0.49	3.02	Community Improvement
Roca Pallin Youth Center Inc	0.43	2.45	Youth Development

Nonprofits with a strong associative component

Associative Nonprofits

Number of Organizations per 1,000 residents



Chelsea