

2016

## Data Profiles - Malden

Mosakowski Institute  
*Clark University*

John C. Brown  
*Clark University*

Joe Krahe  
*Clark University*

Sarah Philbrick  
*Clark University*

---

### Recommended Citation

Mosakowski Institute; Brown, John C.; Krahe, Joe; and Philbrick, Sarah, "Data Profiles - Malden" (2016). *Mosakowski Institute for Public Enterprise*. 50.  
<https://commons.clarku.edu/mosakowskiinstitute/50>

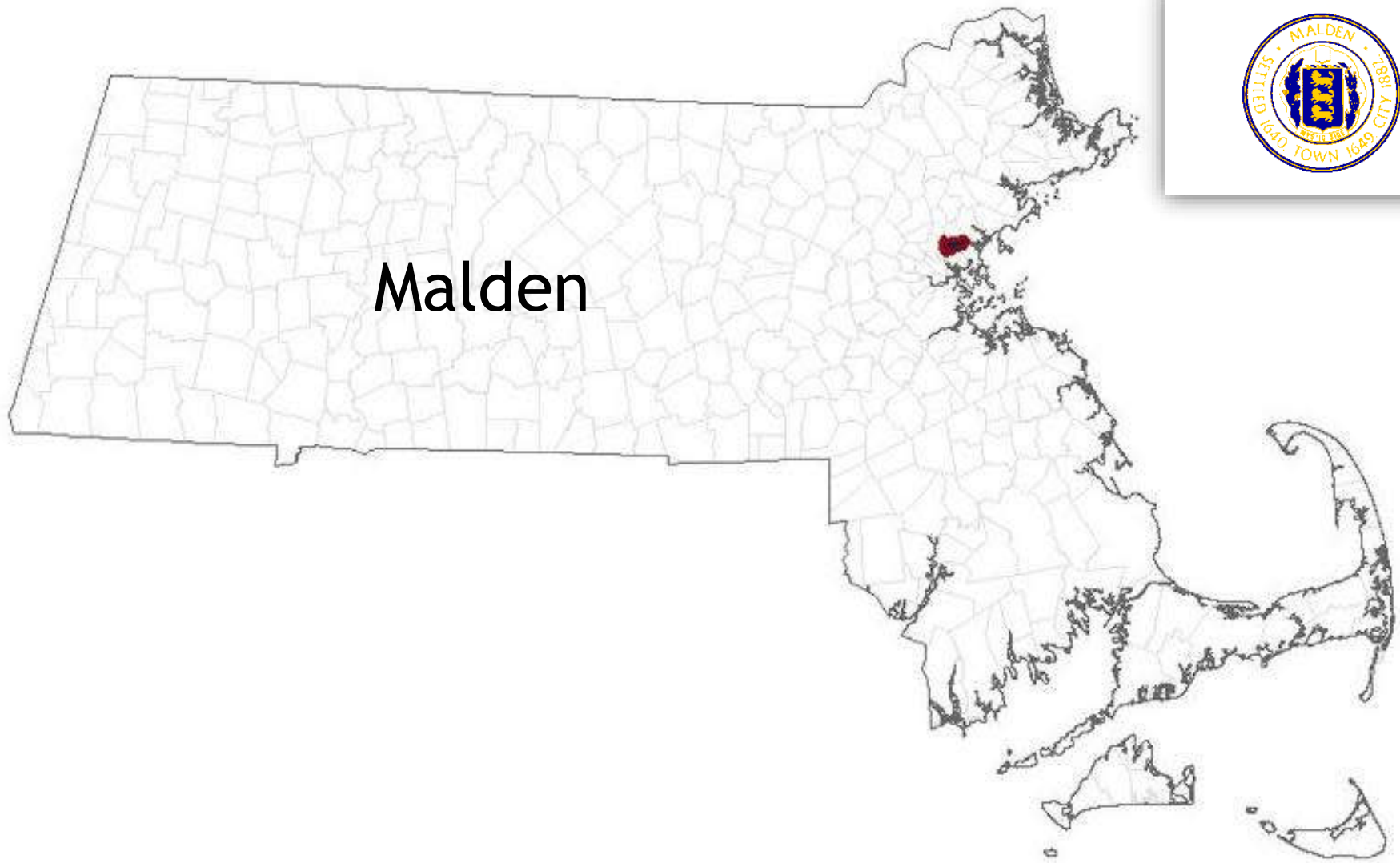
This Article is brought to you for free and open access by the Academic Departments, Centers & Programs at Clark Digital Commons. It has been accepted for inclusion in Mosakowski Institute for Public Enterprise by an authorized administrator of Clark Digital Commons. For more information, please contact [mkrikonis@clarku.edu](mailto:mkrikonis@clarku.edu), [jodolan@clarku.edu](mailto:jodolan@clarku.edu).

---

## Data Profiles - Malden

**Keywords**

data profiles, malden, gateway cities, working cities



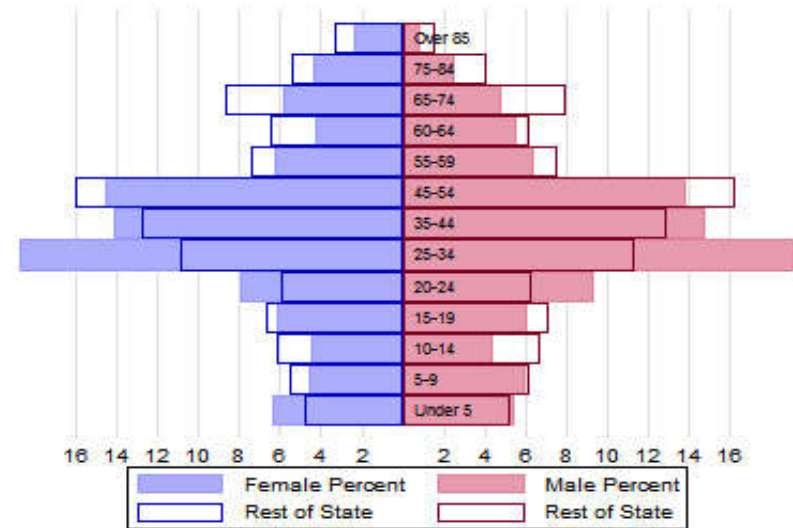
Malden

# The Population

## City Population 1970 to 2014



## Population Distribution by Age Group



## Population Distribution by Race and Ethnicity

Subgroups of the population as a percent of the total	2000	2013	Gateway Cities 2013	State 2013
White	72.1	55.5	73.8	89.0
Black	8.2	14.3	8.0	2.8
Asian	14.0	23.4	5.3	4.8
Foreign-born	25.7	42.4	19.9	12.1
Hispanic	4.8	8.4	19.6	4.3
<b>Origin as percent of Hispanic</b>				
Central America	12.2	26.9	15.8	20.3
Dominican Republic	2.4	8.3	14.4	17.9
Mexico	6.4	6.2	5.5	11.4
Puerto Rico	18.0	21.3	45.5	33.6

## Recent Demographic Behavior

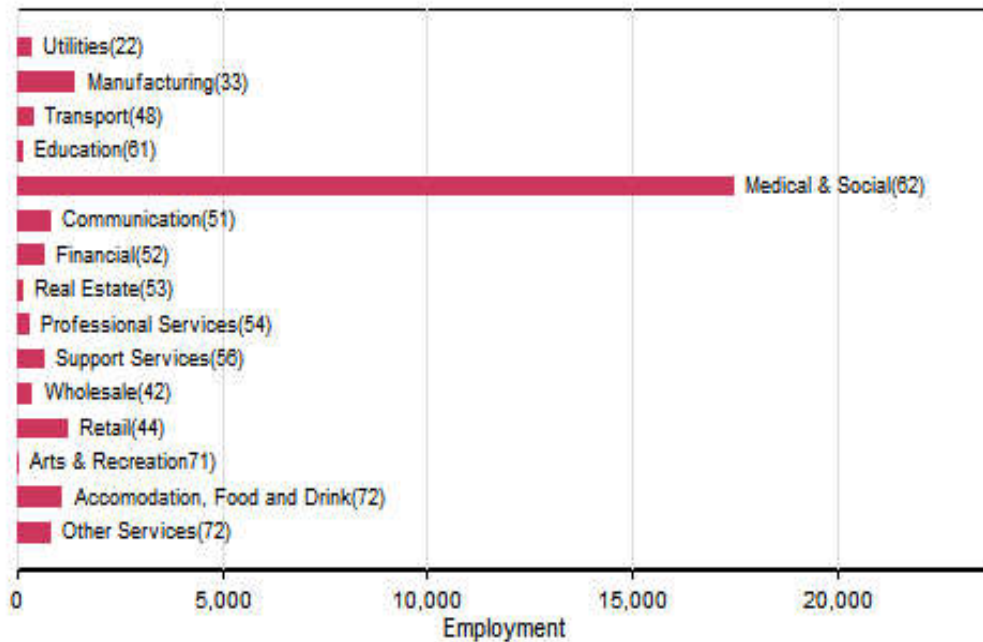
Indicator	Malden	Gateway Cities	State
Birth Rate (per 1,000 females 15-44)	57.2	62.1	52.8
Low birthweight (<2.5 kg. % of births)	8.0	8.0	7.7
Births to teen mothers (15-19 years)†	1.3	6.0	3.8
Birth rate of teen mothers‡	7.1	22.3	12.0
Infant mortality (per 1,000 live births)	4.3	4.9	4.4
Mortality rate (per 100,000 residents)	640.0	844.9	800.0

†As percent of all births

‡Per 1,000 females aged 15-19 years

# The Local Economy

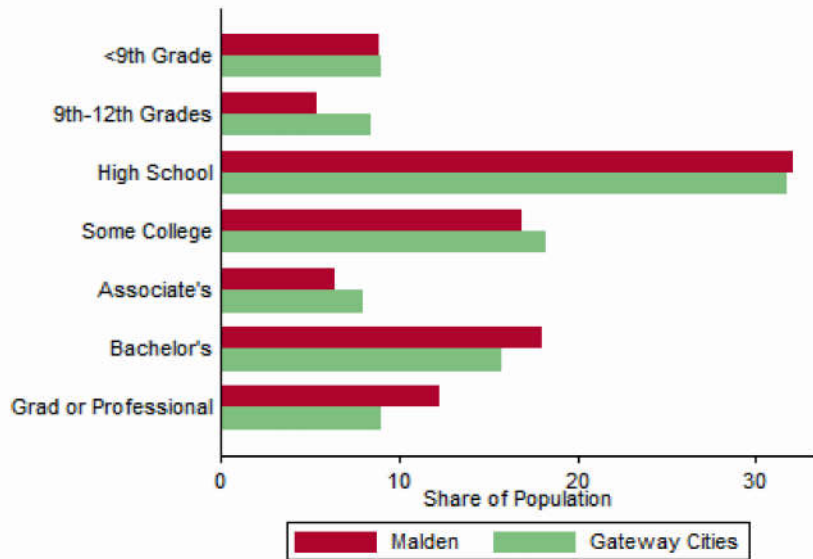
## Employment by Major Sectors: 2012 (2-digit NAICS)



## The Five Largest Industries: 2012 (4-digit NAICS industries)

Description	NAICS	Employment
General Hospitals	6221	>10,000
Physicians Offices	6211	1000-2499
Restaurants	7225	500-999
Depository Credit Intermediation	5221	500-999
Wired Telecommunications Carriers	5171	500-999

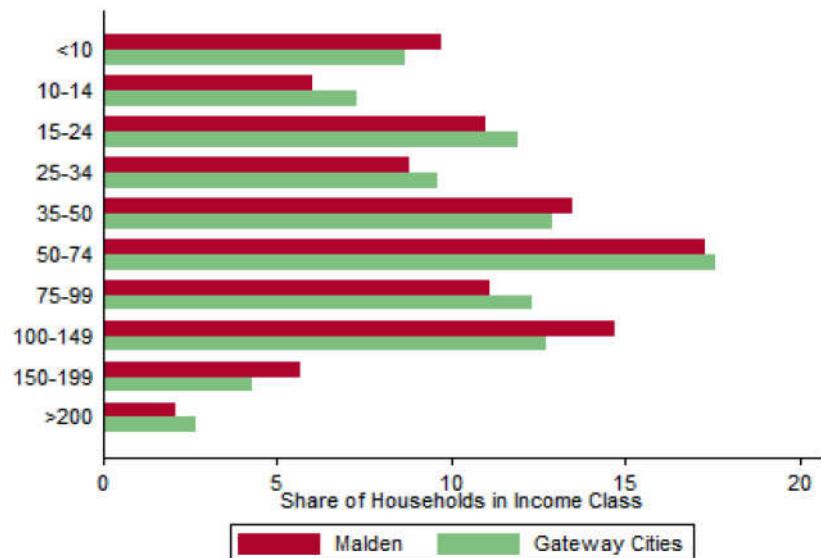
### Educational Attainment of the Population Aged 25 and Older



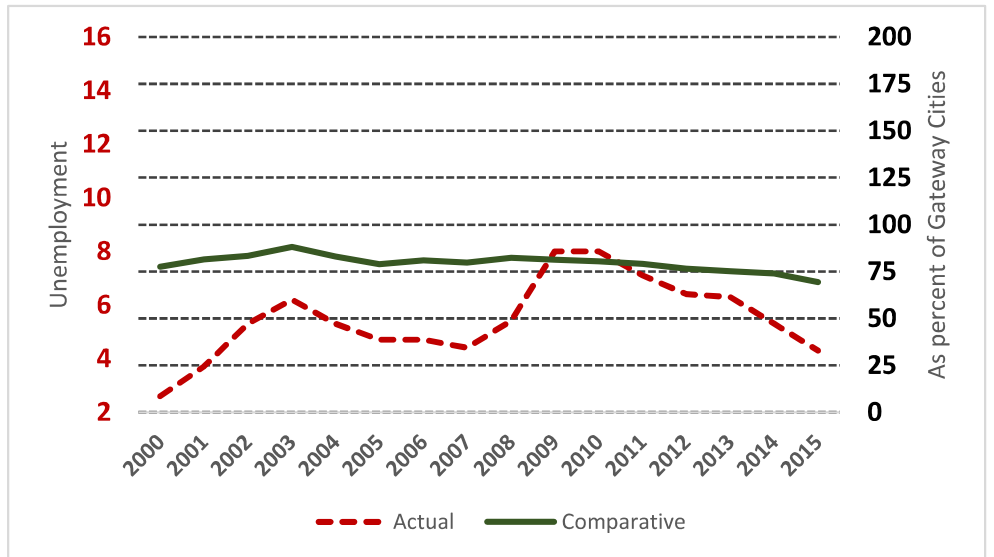
### Key Indicators of Income and Commuting

Indicator	Malden	Gateway Cities
Median Family Income (\$)	51,916	60,087
Families below Poverty Line (%)	15.2	14.3
Children < 18 below Poverty Line (%)	24.4	25.5
Families with Food Assistance (%)	15.9	20.8
Mean Travel Time to Work (Mins.)	34.5	26.4
Commute with Public Transit (%)	29.8	8.6

### Distribution of Households by Income Class (in \$1,000)



### Unemployment Rate: 2000-2015



# Housing

## Housing Market Indicators in 2013

Indicator	Malden	Gateway Cities	State
Share owner-occupied	0.41	0.50	0.62
Median Home Value	314,800	252,085	325,800
Average Rent for Studio	713	735	746
Average Rent for One-Bedroom	701	786	765
Average Rent for Two-Bedroom	1117	1097	926
Average Rent for Three-Bedroom	1317	1182	863
Average Size of Owner-Occupied Households	2.51	2.68	2.25
Average Size of Tenant Households	2.88	2.38	2.70

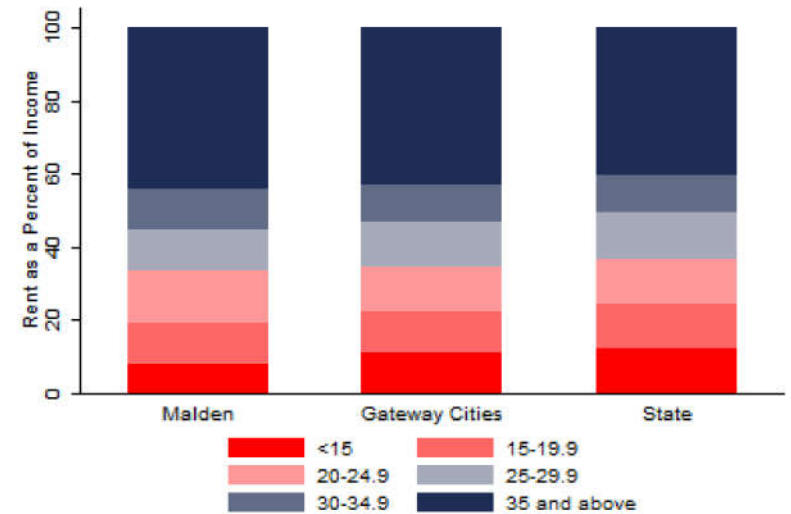
# Education

## Indicators for 2014

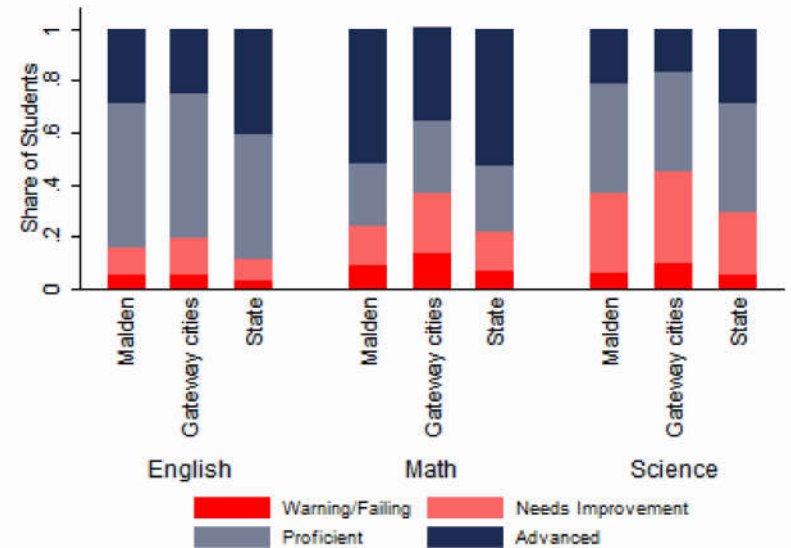
Indicator	Malden	Gateway Cities	State
Average class size	20.8	18.3	18.1
Percent Proficient or Advanced (English 10th)	84.0	80.3	90.0
Percent Proficient or Advanced (Math 10th)	76.0	63.4	79.0
Student Growth Percentile English (10th)	40.0	43.7	51.0
Student Growth Percentile Math (10th)	55.0	43.4	50.0
Graduates attending college or university†	74.0	69.7	76.6
Male Dropout Rate	8.4	11.8	6.7
Female Dropout Rate	6.9	7.9	4.4
English Language Learners Dropout Rate	9.5	16.8	14.9
Low Income Dropout Rate	6.2	11.8	10.2

†Percent of 2013 class

## Housing Affordability



## 10th Grade MCAS Scores in 2014



## Mortality and Health

	Malden	Gateway Cities	State
Lung Cancer Deaths (per 100,000 people) †	53.8	61.3	54.1
Cardiovascular Disease Deaths (per 100,000) †	184.8	254.7	237.4
Opioid Overdose Deaths (per 100,000)‡	26.3	25.5	13.0
HIV/Aids Prevalence Rate (per 100,000 people) 2010†	417.8	317.0	282.3
Admissions to DPH Substance Abuse Programs (per 100,000 people) ‡	1596	2189	1568
Hospital Discharges for Asthma (per 100,000) 2009	181.4	208.8	162.0
Percent overweight or obese children in grade 10 ‡	34.5	38.2	32.3
Percent of population on some form of non-private insurance 2013	32.3	36.1	17.2

†2010

‡2014



## Civic Engagement

### Voting Behavior in 2014

Indicator	Malden	Gateway Cities	State
Registered voters as percent of population aged 18 and above	61.8	75.1	76.0
Voters in 2014 election as percent of registered voters	47.4	43.5	72.7
Voters in 2014 election as percent of population aged 18 and above	29.3	32.8	55.2

### Not-for-Profit Sector

Indicator (in \$ per capita)	Malden	Gateway Cities	State
Assets of Education, Finance, and Medical Non-Profits	4,551	10,152	27,527
Assets of Other Non-Profits	1,943	5,530	18,501
Revenue of Education, Finance, and Medical Non-Profits	6,244	4,361	10,472
Revenue of Other Non-Profits	1,428	3,050	10,589

### Major Nonprofits in Education, Finance and Health Services (in \$millions)

Name	Revenues	Assets	Area
Somerville Hospital	155.23	20.86	Healthcare
Cambridge Health Alliance Physicians Organization Inc	116.58	9.51	Healthcare
Whidden Memorial Hospital Inc	81.40	24.09	Healthcare
Hallmark Health Visiting Nurse Association And Hospice Inc	16.48	29.74	Healthcare
Institute For Community Health Inc	2.31	0.61	Healthcare
Cambridge Health Alliance Foundation Inc	1.50	2.76	Healthcare
Metro North Childrens Learning Center Inc	0.94	0.09	Education
CHA Management Services Inc	0.61	170.92	Healthcare
Consumer Quality Initiatives Inc	0.39	0.18	Healthcare
Malden City Employees Credit Union	0.37	12.91	Financial

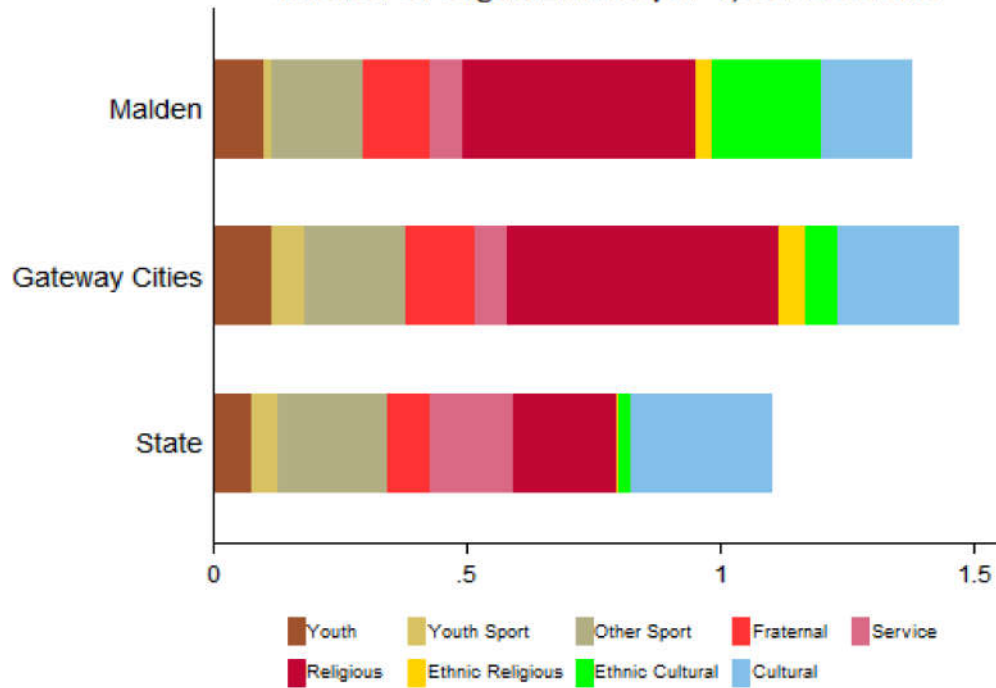
**Other Nonprofits (in \$millions)**

Name	Revenues	Assets	Area
Mystic Valley Elder Services Inc	35.92	10.15	Human Services
Tri-City Community Action Program Inc	10.33	4.36	Community Improvement
Triangle Inc	7.58	4.13	Employment
The Malden YMCA	5.69	13.63	Human Services
Housing Families Inc	3.54	2.28	Human Services
Immigrant Learning Center Inc	2.28	4.52	Human Services
American Federation of Labor & Congress of Industrial Orgs	2.25	2.18	Employment
Laborers International Union of North America	1.90	3.42	Employment
YMCA of Malden	1.23	1.30	Human Services
Agudas Achim Development Corporation	1.11	1.55	Human Services
Adelaide Breed Bayrd Foundation	1.05	2.77	Philanthropy
Boston Modern Orchestra Project Inc	0.96	0.20	Arts & Culture
Davenport Memorial Foundation	0.88	15.25	Philanthropy
Eastern Middlesex Alcoholism Services Inc	0.82	1.25	Mental Health
Monsignor Neagle Apartments Inc	0.72	4.73	Housing

Nonprofits with a strong associative component

Associative Nonprofits

Number of Organizations per 1,000 residents



Malden