

Zurich, June 15-17 2016

Sustainable Built Environment (SBE) regional conference

Expanding Boundaries: Systems Thinking for the Built Environment



ENVIRONMENTAL ASSESSMENT OF RADICAL INNOVATION IN CONCRETE STRUCTURES

S. Zingg^{1*}, G. Habert², T. Lämmlein³, P. Lura⁴, E. Denarie⁵, A. Hajjesmaeili⁶

^{1,2} Chair of Sustainable Construction, Institute of Construction and Infrastructure Management, Swiss Federal Institute of Technology Zurich (ETH Zurich), 8093 Zurich, Switzerland

³ Mechanical Systems Engineering Laboratory, Civil and Mechanical Engineering, Swiss Federal Laboratories for Materials Science and Technology (EMPA), 8600 Dübendorf, Switzerland

⁴ Concrete / Construction Chemistry Laboratory, Civil and Mechanical Engineering, Swiss Federal Laboratories for Materials Science and Technology (EMPA), 8600 Dübendorf, Switzerland

^{5,6} Structural Maintenance and Safety Laboratory, Civil Engineering Institute, Swiss Federal Institute of Technology Lausanne (EPFL), 1015 Lausanne, Switzerland

*Corresponding author; e-mail: zingg@ibi.baug.ethz.ch

Abstract

In the building sector, the contribution of concrete structure to the overall emissions of greenhouse gases is significant. Switzerland is engaged in a 2050 energy strategy where the reduction of the embodied energy of buildings is a key aspect. In this study, we assess the environmental impact of different low energy concrete solutions. The study focuses on technologies that use cement with very high substitution rate (up to 65%) and other tensile resistant materials than steel in order to keep high durability targets. Hybrid wood-concrete structure, low carbon high performance concrete prestressed with carbon fiber reinforced polymer, and ultra-high performance fiber reinforced concrete with synthetic fiber reinforcement are among the studied options. The environmental assessment is done through life cycle analysis using Ecoinvent database for Switzerland and SimaPro software. Results of initial environmental assessment of production of the new technologies present huge energy and emission savings potential for the energy turnaround.

Keywords:

Low energy concrete, hybrid wood-concrete structure, high performance concrete prestressed with carbon fiber reinforced polymer, ultra-high performance concrete with synthetic fiber reinforcement

1 INTRODUCTION

After the Fukushima incident in 2011, Swiss Federal Council has decided to gradually phase-out nuclear energy [1]. Nuclear energy has the biggest share at 37.9% in Swiss electricity mix and comprises about a quarter of the total energy use in Switzerland in 2014 [2]. To cover the shortfall in energy due to the decision to withdraw from nuclear power, Swiss Federal Council has redefined its energy policy to ensure long-term energy supply and outlined the “Energy Strategy 2050” [3]. A coordinated research has been set-up through National Research Program (NRP) 70 and 71 funded by Swiss National Science

Foundation to support implementation of the Energy Strategy 2050.

Low energy concrete solutions project

Building sector consumes around 40% of the global energy use [4]. In building life cycle, operation phase represents the largest share in the energy consumption; about a quarter is consumed in the production of building materials [4]. Continuous improvement in operation through construction of energy-efficient buildings highlights the increasing contribution from materials. Among the most representative building



Expanding Boundaries: Systems Thinking for the Built Environment

materials, concrete still dominates in the share of the total embodied energy of buildings [5]. A joint research project “Concrete Solutions” under NRP 70 has been set up to look into low energy constructive systems to support the overall target of the energy strategy for Swiss energy turnaround. The project aims to develop *innovative* concrete structures with low energy concrete and reduced steel content. Concrete protects the steel in structure from corrosion. Substitution of steel, a high energy building material, eliminates the risk of corrosion in structure and therefore allows further reduction of concrete.

This paper presents the results of the initial environmental assessment of the production of new technologies targeted in the joint research project.

2 MATERIALS AND METHODS

The environmental assessment is done through life cycle assessment (LCA) according to ISO standard [6] using Ecoinvent 3 database for Switzerland [7] and SimaPro 8.0.5 LCA software [8]. Ecoinvent database is selected as it is currently the most reliable database for Swiss unit processes.

2.1 Impact assessment methods

LCA methods used in this study are harmonized with the methods employed in KBOB list, a well-established LCA data of buildings and construction in Switzerland [9]. These methods are: the IPCC 2013 100a method for the calculation of the Global Warming Potential (GWP) or greenhouse gas emissions (also termed as carbon emission in this paper) [10]; the Cumulative Energy Demand (CED) for the calculation of primary energy demand [10]; and the Ecological Scarcity Method 2013 for the calculation of total environmental impacts (UBP) or eco-points [11]. UBP integrates different environmental factors into one indicator. It is an indicator particularly applicable for Switzerland as the method employs eco-factors based on Swiss environmental targets and legislation.

2.2 Functional unit and system boundary

Different functional units were used for different assessments. On the material scale, a functional

unit of one cubic meter of concrete was used (Section 3.1 and 3.4); on structural scale, one square meter of wood-concrete floor slab (Section 3.2) and one linear meter of prestressed concrete beam (Section 3.3) were used. The functional units were designed on the assumption that the targeted technologies fulfill the same performance and service life as the reference. A cradle-to-gate approach was employed focusing on processes from material up to structural element production.

2.3 Data collection

Data of all processes and materials relevant in the development of technological solutions in the joint project were gathered. Processes that are not available in Ecoinvent database, e.g. laminated veneer lumber (LVL), carbon fiber reinforced polymer (CFRP) and basalt fiber, were modelled using available data from literature. Modelled data are preliminary. LCA modelling will be improved in parallel with the technological development from the joint project.

2.4 Statistical analysis

For the analysis of environmental impact, “*Environmental savings potential (ESP)*” was calculated using percentage relative difference (Equation 1) adapted from Zea Escamilla and Wallbaum (2011) [12]:

$$ESP = \frac{Impact_{ref} - Impact_x}{Impact_{ref}} \times 100 \quad (1)$$

where

$Impact_x$ is the environmental impact (UBP, CED or GWP) of the specific technological solution; and $Impact_{ref}$ is the environmental impact (UBP, CED or GWP) of the reference.

Positive ESP indicates lesser environmental impact of the technology being assessed compared to the reference; *negative* ESP indicates higher environmental impact.

3 RESULTS AND DISCUSSION

Results of the environmental assessment done at concrete and at structural scale are discussed in this chapter. Three structures are presented: hybrid wood-concrete structure (*Section 3.2*), low



Expanding Boundaries: Systems Thinking for the Built Environment

energy high performance concrete prestressed with carbon fiber reinforced polymer structure (Section 3.3), and ultra-high performance fiber reinforced concrete with synthetic fiber reinforcement structure (Section 3.4).

3.1 Low energy concrete

Motivation for the development of low energy concrete was underpinned by the introduction of new guidelines from Swiss Society of Engineers and Architects, the SIA Merkblatt 2049, allowing production of new generation of Portland cements with clinker substitution level up to 65% [13]. European standard EN 197-1 currently allows up to 35% clinker substitution for Portland composite cements [14].

The study focuses on optimisation of ternary blend cement with burnt oil shale (BOS) and limestone (CEM II/B-M(T-LL)) which, as of 2015, has the highest share in total cement supplied in Swiss market [15]. Compatible *polycarboxylate ether* (PCE) superplasticizers will be developed to address the issues on low strength development at early ages and the uncertainty on long-term properties associated with high clinker substitution.

For the interim assessment, a low energy concrete with 40% clinker content in cement has been modelled. Polynaphthalene sulfonate (PNS) plasticizer in Ecoinvent dataset for concrete was replaced with PCE superplasticizer modelled from Häner, et al (2005) [16]. Due to unavailability of BOS data in Ecoinvent, whose impact allocation was assumed as negligible based on the available LCA of oil shale industry [17], a binary cement with limestone was used in the model.

Production of the modelled low energy concrete presents more than 40% savings on primary energy and around 50% savings on emission compared to the reference concrete with ordinary Portland cement (OPC / CEM I). Savings on concrete come almost entirely from low clinker cement. Substitution of clinker with limestone presents a reduction directly proportional to the substitution rate because limestone, a locally available resource in Switzerland, has almost negligible environmental burden compared to clinker.

It is noted however that higher clinker substitution does not necessarily mean better savings as presented in the study of Pushkar and Verbitsky (2016) [18]. The choice of supplementary cementitious material (SCM) is critical to optimizing the concrete mix. Depending on the environmental burden allocation of secondary material used as SCM, e.g. fly ash, slag or BOS, the resulting concrete mix could have lower or higher environmental impact [18]. LCA modelling of low energy concrete will be improved to consider allocation impact from secondary material particularly BOS, in parallel with the optimization of concrete.

3.2 Hybrid wood concrete structure

One of the innovative concrete structures to be developed in the project is the hybrid wood-concrete structure without steel. This is a targeted improvement to the wood-concrete technology used in the construction of ETH House of Natural Resources (HoNR), a two-storey building located in ETH Zurich Campus. HoNR is an innovation in timber construction, where laminated veneer lumber (LVL) was used as formwork and reinforcement to substitute steel [19]. To comply with fire safety standards, steel was not totally replaced [20]. A connection system without steel fasteners will be developed by looking into material lay-up and potential glue that could effectively bind wood and concrete. The research will also look into LVL with improved fire retardancy to totally eliminate dependency on steel. Low energy concrete will be used to optimize the wood-concrete structure.

Figure 1 presents the results of environmental assessment of floor slab structure using the targeted low energy wood-concrete solution of the project (*wood concrete optima*) relative to the reference conventional reinforced concrete and compared to wood-concrete technology used in HoNR (*wood concrete HoNR*). Design specifications are presented in Table 1. Production of *wood concrete optima* presents around 50% potential savings in energy and 70% in emission compared to the conventional reinforced concrete due to improvement in concrete and total elimination of steel. Total elimination of steel however is an optimistic assumption. The task of the research is to look into



Expanding Boundaries: Systems Thinking for the Built Environment

the right balance of steel substitution that would ensure structure durability and fire safety.

Table 1. Design of one square meter wood-concrete floor slab. Based on Tai Ly (2014) [21].

	Conventional reinforced concrete ^a	Wood concrete HoNR ^b	Wood concrete optima ^c
Cement per cubic meter, kg/m ³	300	375	375
Concrete thickness, mm	280	160	160
LVL thickness, mm	0	40	40
Steel fraction, %	1.12	1.07	0

^{a, b} Modelled from actual application of wood-concrete technology (using CEM I) in HoNR floor slabs [21].

^c Wood concrete optima is modelled using cement with 40% clinker and no steel.

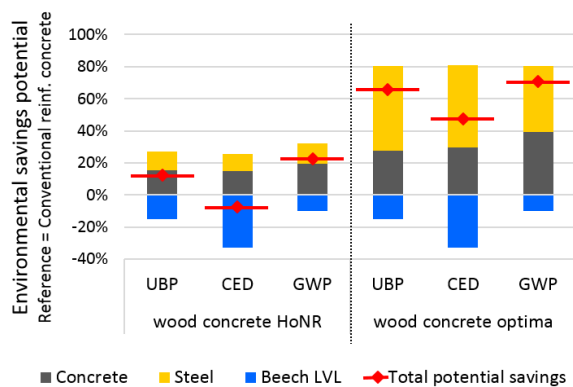


Figure 1: Environmental impact assessment of 1 m² of wood concrete floor slab structure. Reference is conventional reinforced concrete. Design is based on Table 1.

LVL in this study is modelled from beech wood, which is a locally available resource in Switzerland and production process is modelled based on Zimmer and Kairi (2011) [22]. Environmental assessment done on beech LVL shows that more than 50% of the embodied energy comes from adhesive. Phenolic resin is the adhesive used based on production process of Pollmeier, the LVL supplier in Germany [23]. Phenolic resin has higher environmental impact than other adhesives like melamine urea formaldehyde (MUF) and polyurethane (PUR), but is attractive because of its high strength and high adhesion to wood [24]. It has also lesser impact on health compared to MUF as lesser formaldehyde is released [24]. One

limitation of phenolic resin data in Ecoinvent, as noted by Messmer (2015), is that it is not based on real production situation but rather on rough estimates [24]. Beech LVL model will be improved to consider primary data from industry.

3.3 Low energy high performance concrete prestressed with carbon fiber reinforced polymer

Another concrete structure targeted in the project is the low energy high performance concrete (HPC) using carbon fiber reinforced polymer (CFRP) as pre-stressing. Special prestressed structural elements with lightweight and durable properties are targeted by replacing steel with CFRP, a strong and more corrosive-resistant material [25]. Although CFRP is more energy intensive than steel [26], the benefit from substitution is the reduction of volume of concrete in structural design. Concrete cover is needed to protect the structure from corrosion due to steel.

One linear meter of beam with design parameters presented in Table 2 is the functional unit used for environmental assessment of HPC beam prestressed with CFRP (HPC-CFRP) compared to the conventional reinforced concrete beam and HPC beam prestressed with steel (HPC-steel).

Table 2. Design of one linear meter beam structure. Based on e-mail communication with T. Lämmlein (EMPA) dated 04.03.2016.

	Conventional reinforced concrete ^a	HPC-steel ^b	HPC-CFRP ^c
Tensile load, kN	270	270	270
Concrete strength, MPa	30	90	90
Cross-section, cm ²	900	429 ^d	189
Volume, m ³	0.09	0.043	0.019

^a 1.12% vol. steel; ^b 0.85% vol. steel; ^c 0.84% vol. CFRP

^d Additional concrete cover for steel protection is included.

Environmental assessment of HPC-CFRP presented in Figure 2 gives around 60% savings potential in energy and 70% in emission relative to the reference conventional reinforced concrete. This huge potential savings are consequent to almost fivefold reduction in volume of the beam (Table 2). Analysis relative to HPC-steel, which is more reasonable in terms of lightweight and durable applications, presents around 10%



Expanding Boundaries: Systems Thinking for the Built Environment

savings in energy and more than 20% in emission (Figure 2). Note that further optimization of HPC-CFRP using cement with 40% clinker instead of OPC (see *HPC-CFRP optima* in Figure 2) presents additional 5% to 8% environmental savings potential.

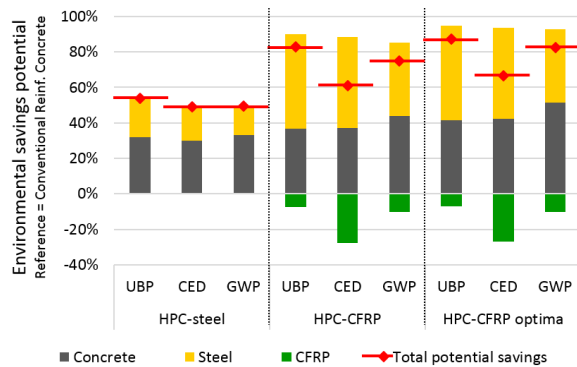


Figure 2: Environmental impact assessment of 1 linear meter HPC-CFRP beam structure. Reference is conventional reinforced concrete. HPC and reference are modelled using OPC while HPC optima is modelled using cement with 40% clinker. Beam design is based on Table 2.

LCA of CFRP shows high impact contribution from carbon fiber. Life cycle inventory of CFRP is not readily available in Ecoinvent database. Processes were modelled from Griffing and Overcash (2010) [27] for carbon fiber production, Suzuki and Takahashi (2005) [28] for the Pultrusion process, and Terrasi (2008) [29] for carbon fiber and epoxy mix. High embodied energy of carbon fiber is due to carbon fiber production, specifically the production of precursor [30], which is a good target for energy optimization. According to Suzuki and Takahashi (2005), the production scale of carbon fiber is not yet high enough to result to high efficiency as the industry is relatively young [28]. Efficiency in carbon fiber production is largely dependent on technology and facility [26].

Further reduction in environmental impact of HPC-CFRP is expected during the construction phase. Savings from structural designs due to potential reduction in concrete volume for foundation and column, as well as from transportation and machine usage due to lightweight and durable HPC-CFRP elements, will be assessed. The issue

on carbon fiber recyclability will also be looked at in the next steps of this study.

3.4 Ultra high performance fibre reinforced concrete with synthetic fiber reinforcement

Replacement of steel reinforcement with synthetic fibres for ultra high performance fiber reinforced concrete (UHPFRC) is another low energy concrete structure to be developed in the project. UHPFRC has very high durability compared to conventional concrete due to its extremely low permeability and is attractive to use for applications such as bridge construction and rehabilitation [31]. Two potential synthetic fibres are targeted in the project – polyethylene (PE) and basalt. The use of basalt fiber in construction is gaining attention in research due to its promising mechanical properties [32]. PE fiber is also considered due to its high tensile strength, relatively high modulus of elasticity, and much lower density compared to steel [33]. Dataset for basalt fiber production is not readily available in Ecoinvent and is modelled from production data provided by De Fazio (2011) [34].

Table 3. Preliminary mixes of 1 m³ UHPFRC with different fiber reinforcements. Based on email communication with E. Denarie and A. Hajiesmaeili (EPFL) dated 01.12.2015.

in kg	Conventional UHPFRC	UHPFRC with PE	UHPFRC with basalt
Cement	650	657	657
Limestone filler	559	565	565
Silica fume	137	138	138
Quartz sand	573.5	580	580
Water	180	182	182
Superplasticizer	42.5	42.8	42.8
Steel fiber	314	0	0
PE fiber	0	19.6	0
Basalt fiber	0	0	54

Interim mix designs for the environmental assessment of one cubic meter of UHPFRC with different fiber reinforcements are presented in Table 3. Environmental assessment of mixes with synthetic fibers and low clinker cement presents more than 50% environmental savings potential compared to conventional UHPFRC as shown in



Expanding Boundaries: Systems Thinking for the Built Environment

Figure 3, mainly because of substitution of steel with PE and basalt fibers.

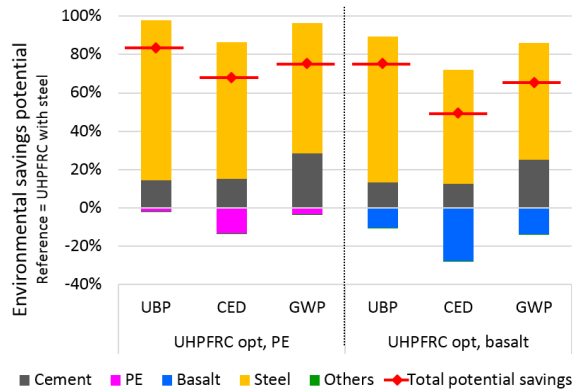


Figure 3: Environmental assessment of 1 m³ of UHPFRC with synthetic fiber substitutes. Reference is conventional UHPFRC with steel and OPC. UHPFRC with PE and basalt are modelled using cement with 40% clinker. Design is based on Table 3.

This study is focused on environmental assessment of UHPFRC on the material level to see substitution potential from selected synthetic fibers. Next steps will look into the structural level and will consider the whole life cycle analysis to assess also savings from maintenance. According to Habert, et al (2013), the use of UHPFRC could provide considerable impact reduction within the whole life cycle compared to conventional concrete solution due to savings from service life maintenance [31].

4 CONCLUSIONS

Initial environmental assessment of production of the targeted technologies in the project presents huge energy and emission savings potential for the energy turnaround. Low energy concrete could reduce energy by more than 40% and cut carbon emission by half compared to conventional concrete. Interim analysis done on structural elements using low energy concrete and substitution of steel with other tensile-resistant materials gives promising results in terms of energy and emission savings potential, as well as eco-points.

Next step of this study is the assessment on structural level from cradle-to-grave, including savings from structural design, transportation and

end-of-life. LCA modelling will be improved in parallel with the development of low energy concrete technologies in the project.

5 ACKNOWLEDGMENTS

The authors would like to thank Swiss National Science Foundation for funding "Concrete Solutions Joint Research Project" under NRP 70 Energy Turnaround. We acknowledge the whole team working in the joint research project from EMPA, EPFL and ETHZ for their respective works developing the technological solutions where this environmental assessment is anchored on.

6 REFERENCES

- [1] Kirchner, A., D. Bredow, F. Ess, T. Grebel, P. Hofer, A. Kemmler, and J. Struwe. 2012. "Die Energieperspektiven für die Schweiz bis 2050." Bern Bundesamt für Energie (BFE), Switzerland.
- [2] Federal Statistical Office FSO. 2016. *Statistical Data on Switzerland 2016*. Neuchatel, CH: Federal Statistical Office. ISBN 978-3-303-00544-6.
- [3] Steinmann, W. 2012. "Energierstrategie 2050: Konzept, Stand und nächste Schritte." Bern Bundesamt für Energie (BFE), Switzerland.
- [4] UNEP Sustainable Buildings and Climate Initiative. 2014. *Greening the Building Supply Chain*. DTI/1753/PA.
- [5] Solis-Guzman, J., and M. Marrero. 2015. "Chapter 6 Case Study." In *Ecological Footprint Assessment of Building Construction*. Sharjah, UAE: Bentham Science Publishers. 111-144. 978-1-68108-099-4.
- [6] ISO. 2006. "ISO 14040: Environmental management—life cycle assessment—principles and framework." London: British Standards Institution.
- [7] Weidema, B., C. Bauer, R. Hischier, C. Mutel, T. Nemecek, J. Reinhard, C. Vadenbo, and G. Wernet. 2013. "Overview and methodology. Data quality guideline for the ecoinvent database version 3." *Ecoinvent Report*. St. Gallen, CH: Swiss Centre for Life Cycle Inventories. <http://www.ecoinvent.org>
- [8] Goedkoop, M., M. Oele, M. Vieira, J. Leijting, T. Ponsioen, and E. Meijer. 2014.



Expanding Boundaries: Systems Thinking for the Built Environment

- "SimaPro Tutorial." Netherlands: Pré Consultants.
- [9] KBOB, eco-bau and IPB. *Liste Ökobilanzdaten im Baubereich 2009/1:2014*. KBOB c/o BBL Bundesamt für Bauten und Logistik. Retrieved from <https://www.kbob.admin.ch/kbob/de/home/publikationen/nachhaltiges-bauen.html>
- [10] Frischknecht, R., N. Jungbluth, H. Althaus, C. Bauer, G. Doka, R. Dones, R. Hirschler, S. Hellweg, S. Humbert, and T. Köllner. 2007. "Implementation of life cycle impact assessment methods." *Ecoinvent report*. St. Gallen, CH: Swiss Centre for Life Cycle Inventories.
- [11] Frischknecht, R., and S. Büsser Knöpfel. 2013. "Swiss eco-factors 2013 according to the ecological scarcity method." Federal Office for the Environment FOEN. www.bafu.admin.ch/uw-1330-e
- [12] Zea Escamilla, E., and H. Wallbaum. 2011. "Environmental savings from the use of vegetable fibres as concrete reinforcement." 6th International Structural Engineering and Construction Conference. Zürich, Switzerland.
- [13] SIA. 2014. "Merkblatt 2049: Anforderungen an neue Zemente." Zürich: Schweizerischer Ingenieur u. Architektenverein.
- [14] EN. 2000. "197-1 (2000) Cement: composition, specifications and conformity criteria for common cements." London British Standards Institution.
- [15] Cemsuisse. 2015. "Zementlieferungen 4.Quartal 2015."
- [16] Häner, A., M. Schluep, and R. Gälli. 2005. "Mass flow and risk analysis of modern superplasticizers." ORGAGEC Symposium.
- [17] Gavrilova, O., T. Randla, L. Vallner, M. Strandberg, and R. Vilu. 2005. "Life cycle analysis of the Estonian oil shale industry." Tallinn, Estonia: Tallina University of Technology.
- [18] Pushkar, S., and O. Verbitsky. 2016. "Effects of different allocation approaches for modeling mineral additives in blended cements on environmental damage from five concrete mixtures in Israel." *Materials and Structures*, 1-15.
- [19] Wanninger, F., A. Frangi, and M. Fragiaco. 2014. "Long-Term Behavior of Posttensioned Timber Connections." *Journal of Structural Engineering* 141 (6): 04014155-1 to 13.
- [20] Leyder, C., F. Wanninger, A. Frangi, and E. Chatzi. 2015. "Dynamic response of an innovative hybrid structure in hardwood." *Construction Materials* 168 (CM3): 132-143.
- [21] Ly, T. 2014. "Life cycle assessment of wood concrete composite floor." Master Thesis. Institute of Construction and Infrastructure Management, ETH Zürich.
- [22] Zimmer, B., and M. Kairi. "LCA of Laminated Veneer Lumber - Finnforest Study."
- [23] Pollmeier. "BauBuche FAQs." <https://www.pollmeier.com/en/products/baubuche/technical-aspects.html>. Accessed 21.04.2016.
- [24] Messmer, A., and S. Hellweg. 2015. "Life cycle assessment (LCA) of adhesives used in wood constructions." Master Thesis. Institute of Ecological System Design-ETH Zürich. Zürich, Switzerland: Swiss Federal Institute of Technology Zurich.
- [25] Fitzer, E., A. Foley, W. Frohs, T. Hauke, M. Heine, H. Jäger, and S. Sitter. "Fibers, 15. Carbon Fibers." In *Ullmann's Encyclopedia of Industrial Chemistry*. ISBN 3527306730.
- [26] Griffing, E., E. Vozzola, and M. Overcash. 2014. "Life cycle inventory data for carbon fiber and epoxy systems and use in environmentally optimized designs." LCA XIV San Francisco.
- [27] Griffing, E., and M. Overcash. 2010. "Carbon fiber HS from PAN. Chemical Life Cycle Database." www.environmentalclarity.com
- [28] Suzuki, T., and J. Takahashi. 2005. "Prediction of energy intensity of carbon fiber reinforced plastics for mass-produced passenger cars." Ninth Japan International SAMPE Symposium JISSE-9, Tokyo, Japan.
- [29] Terrasi, G., C. Affolter, M. Barbezat, and G. Bättig. 2008. "Increasing the acceptance of high performance concrete prestressed with CFRP." Proceeding of



Expanding Boundaries: Systems Thinking for the Built Environment

- the Fourth International Conference on FRP Composites in Civil Engineering (CICE2008).
- [30] US Department of Energy. 2015. "Chapter 6: Innovating Clean Energy Technologies in Advanced Manufacturing." In *Quadrennial Technology Review 2015. An Assessment of Energy Technologies and Research Opportunities*. <http://energy.gov/quadrennial-technology-review-2015>
- [31] Habert, G., E. Denarié, A. Šajna, and P. Rossi. 2013. "Lowering the global warming impact of bridge rehabilitations by using Ultra High Performance Fibre Reinforced Concretes." *Cement and Concrete Composites* 38 1-11.
- [32] Fiore, V., T. Scalici, G. Di Bella, and A. Valenza. 2015. "A review on basalt fibre and its composites." *Composites Part B: Engineering* 74 74-94.
- [33] Zheng, Z., and D. Feldman. 1995. "Synthetic fibre-reinforced concrete." *Progress in Polymer Science* 20 (2): 185-210.
- [34] De Fazio, P. 2011. "Basalt fiber: From earth an ancient material for innovative and modern application." *Energia, Ambiente e Innovazione* 3 89-96.