

Three-dimensional Super-resolution Optical Fluctuation Imaging

Marcel Leutenegger, Stefan Geissbuehler, Noelia L. Bocchio,
Corinne Berclaz, Theo Lasser

Laboratoire d'Optique Biomédicale,
École Polytechnique Fédérale de Lausanne,
1015 Lausanne, Switzerland.

E-mail : marcel.leutenegger@epfl.ch

KEY WORDS: super-resolution, fluorescence microscopy, cumulant analysis.

Super-resolution optical fluctuation imaging (SOFI) achieves three-dimensional super-resolution by computing higher-order spatio-temporal cross-cumulants of stochastically blinking fluorophores [1]. In contrast to localization microscopy, SOFI is compatible with weakly emitting fluorophores and a wider range of blinking conditions [2]. The main drawback of SOFI is the nonlinear response to brightness and blinking heterogeneities in the sample, which limits the use of higher cumulant orders.

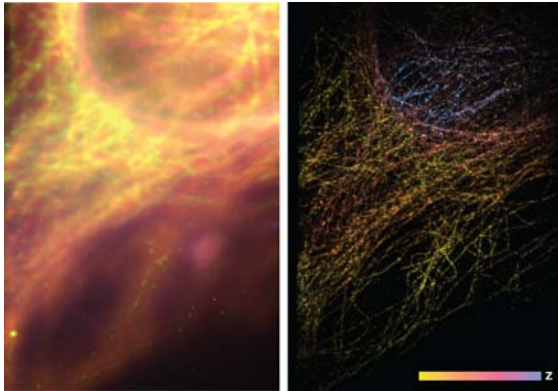


Figure 1: Maximum intensity projections of a three-dimensional fluorescence image of microtubules in a HeLa cell. Left: average intensity image. Right: third-order balanced SOFI image. Image size: $20 \times 29 \times 2.5 \mu\text{m}^3$.

We present a balanced SOFI algorithm for mapping molecular parameters and for linearizing the brightness response [3] and we outline a MATLAB toolbox for two- and three-dimensional SOFI analysis. We show super-resolved three-dimensional cell structures imaged with a multi-plane wide-field microscope. The simultaneous acquisition of several focal planes significantly reduces the acquisition time and helps limiting the photo-bleaching of the marker fluorophores.

- [1] T. Dertinger; R. Colyera, G. Iyer, S. Weiss and J. Enderlein, "Fast, background-free, 3D super-resolution optical fluctuation imaging (SOFI)," *Proc. Natl. Acad. Sci. USA*, **106**, 22287–22292 (2009).
- [2] S. Geissbuehler; C. Dellagiacoma and T. Lasser, "Comparison between SOFI and STORM," *Biomed. Opt. Express*, **2**, 408–420 (2011).
- [3] S. Geissbuehler, N. L. Bocchio, C. Dellagiacoma, C. Berclaz, M. Leutenegger and T. Lasser, "Mapping molecular statistics with balanced super-resolution optical fluctuation imaging (bSOFI)," *Opt. Nanoscopy*, **1:4** (2012).