

How *Drosophila* combats microbial infection: a model to study innate immunity and host–pathogen interactions

Phoebe Tzou, Ennio De Gregorio and Bruno Lemaitre*

During the past year, dramatic progress has been achieved in our understanding of *Drosophila* immune reactions. The completion of the *Drosophila* genome sequencing project, microarray analysis and the use of genetic screens have led to the identification of several new genes required to combat microbial infection, filling in some important gaps in the understanding of innate immunity. At the same time, this insect was used as a model for the study of host–pathogen interactions. The recent major advances on the mechanisms by which this insect defends itself against intrusion of pathogens are discussed in this review.

Addresses

Centre de Génétique Moléculaire, Centre National de la Recherche Scientifique, 91 198 Gif-sur-Yvette, France
*e-mail: lemaitre@cgm.cnrs-gif.fr

Current Opinion in Microbiology 2002, 5:102–110

1369-5274/02/\$ - see front matter

© 2002 Elsevier Science Ltd. All rights reserved.

Abbreviations

AMP	antimicrobial peptide
GNBP	Gram-negative-binding protein
JAK	janus kinase
Imd	immune deficiency
LPS	lipopolysaccharide
PAMP	pathogen-associated molecular pattern
PGRP	peptidoglycan recognition protein
STAT	signal transducer and activator of transcription
TEP	thiol ester protein
TLR	Toll-like receptor
TNF	tumor necrosis factor

Introduction

The fruit fly, *Drosophila*, spends its entire life cycle in decaying organic matter, such as injured or rotting fruit. In such an environment enriched in microorganisms, *Drosophila* often acts as a vector for microbial infection — adult flies transmit yeast and bacteria from one plant to another while the larvae deliver them deeper into the fruit (Figure 1). It is, therefore, not surprising that, during the four stages of the *Drosophila* life cycle, this insect uses efficient mechanisms to prevent microbial infection (reviewed in [1–3]).

First of all, the external cuticle offers an effective physical barrier against the penetration of microbes. In addition, both the gut and trachea, which are two main routes of infection, are lined with chitinous membranes. An environment hostile to microbial colonisation is maintained in the gut by its low pH and by secretion of antimicrobial factors such as lysosymes. When pathogens breach these physical and chemical barriers, they activate a wide range of inducible immune reactions (Figure 2). Firstly, breakage of the cuticle

after injury or microbial infection induces rapid proteolytic cascades that lead to blood clotting and melanization (see later for a definition). Secondly, a cellular immune response that involves different types of haemocytes (blood cells), which participate in pathogen clearance by phagocytosis or by encapsulating larger parasites, is mounted. Finally, during systemic infection, a large set of inducible effector molecules, such as antimicrobial peptides (AMPs), stress response proteins and other factors required for opsonization and iron sequestration, are produced mainly by the fat body and secreted into the blood. As illustrated in Figure 2, the *Drosophila* immune responses are interconnected and synergistic in their effects. In this review, we discuss the recent major advances on the mechanisms by which *Drosophila* defends itself against intrusion by pathogens.

Haemocyte differentiation and function

Insects possess an open circulatory system that contains the haemolymph (the insect blood), which is pumped by a basic heart called the dorsal vessel. The haemolymph does not play a role in oxygen transport but is the major site of resistance during systemic infection. *Drosophila* larvae and adults contain a few thousand blood cells, which can be divided into the following four types on the basis of structural and functional features: secretory cells; plasmotocytes (the most numerous cells, essentially phagocytic); lamellocytes (required for encapsulation of parasites); and crystal cells (involved in the melanization process) [4,5,6**]. *Drosophila* haematopoiesis occurs in two major phases. The first population of blood cells appears during embryogenesis in the anterior mesoderm. These cells then rapidly colonise the whole embryo [7]. One of the functions of embryonic blood is to ingest apoptotic cells by phagocytosis. In addition, it has also been shown that blood cells have the capacity to engulf microbes injected into the embryo [8]. Toward the end of embryogenesis, the lymph glands (the larval haematopoietic organ) differentiate along the anterior portion of the dorsal vessel (Figure 3a). This organ, which disappears during metamorphosis, contains most haemocyte precursors, therefore serving as a haemocyte reservoir [6**]. In larvae, haemocytes can circulate freely in the haemolymph, but a large fraction of them, the sessile haemocytes, are attached to tissue [6**]. Four genes, *serpent*, *lozenge*, *U-shape* and *glial cells missing*, that regulate key steps of *Drosophila* hematopoietic lineage commitment have recently been identified (Figure 3b) [9,10**,11]. Given the similarities between *Serpent*, *Lozenge* and *U-shape* to mammalian haematopoietic factor GATA, Acute Myeloid Leukemia-1 (AML1) and Friend of GATA (FOG), respectively, these studies strongly suggest conservation of the molecular basis for blood cell lineage in mammalian and *Drosophila* haematopoiesis [9,10**,11]. The differentiation

Figure 1

Drosophila and microorganisms co-exist in numerous ways. *Drosophila* larvae and adults develop in decaying organic matter (the figure shows an injured *Opuntia* fruit) and often serve as vectors for microbes. Photograph appears courtesy of J Rouault.



and proliferation of larval haemocytes occur either in the lymph gland or in circulation. These processes are under the control of two conserved signalling pathways: the janus kinase (JAK)/signal transducer and activator of transcription (STAT) pathway, which is important for lamellocyte differentiation [12]; and the Toll pathway, which is required for proper haemocyte proliferation [13].

So far, we have little information on the mechanisms that underlie phagocytosis and encapsulation in *Drosophila*. A functional study using a dsRNA knockout in cultured cells of the mosquito *Anopheles gambiae*, however, indicates the role of a humoral protein called *Anopheles* thiol ester protein 1 (aTEP-1) in opsonization [14**]. This study suggests that aTEP-1 binds to the surface of both Gram-negative and Gram-positive bacteria and promotes phagocytosis by haemocytes. Interestingly, the *Drosophila* genome encodes four TEP-encoding genes that may play similar functions [15*]. Given the sequence similarities between TEP and vertebrate complement factors C3 and α -2-macroglobulin, these studies point to the ancient origin of complement-like protein in promoting phagocytosis [14**].

Coagulation and melanization

As we mentioned above, breakage of the host cuticle in invertebrates immediately induces the clotting of blood and melanization at the injury site [16,17]. These two reactions are essential to limit the spread of microbes during systemic infection. Melanization is a common defence mechanism among invertebrates and, in addition to wound healing, it is associated with encapsulation [17]. It requires the activation of phenoloxylase, an enzyme that catalyses

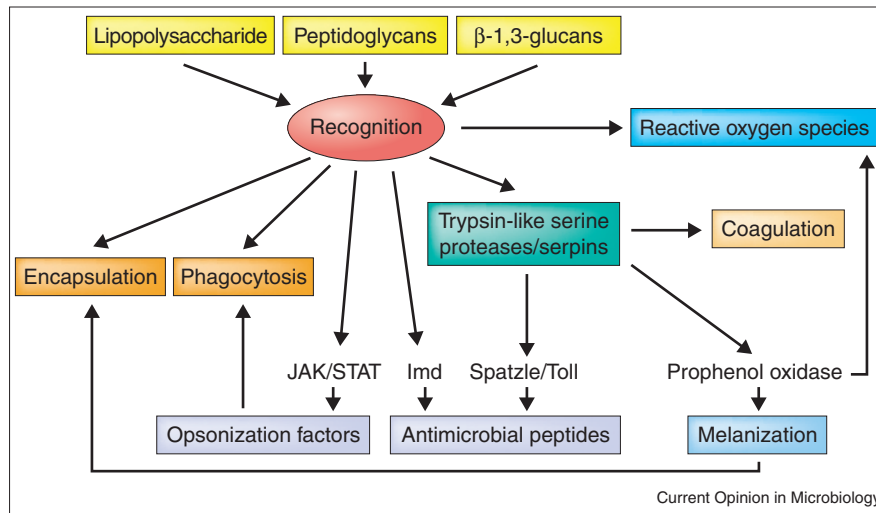
the conversion of dopamine to melanin, which is toxic for microorganisms. This reaction also leads to the production of cytotoxic reactive oxygen species (ROS) that may play a role in combating infection.

The coagulation and melanization reactions are poorly studied in *Drosophila*. However, studies performed in other arthropods indicate that these cascades are triggered after recognition of microbial elicitors, such as lipopolysaccharide (LPS) or β -1,3-glucan, via a serine protease proteolytic cascade [17,18]. Interestingly, the *Drosophila* genome contains a large number of genes that encode serine proteases, protease inhibitors and other metabolic enzymes that may be involved in coagulation and melanization [2]. The observation that some of these genes are upregulated after microbial infection supports this assumption of their roles during the immune response [19**].

The fat body and the humoral response

One of the landmarks of the *Drosophila* immune response is the synthesis by the fat body of several antimicrobial peptides with distinct but overlapping specificity ([1,20]; Figure 3b). The fat body tissue originates from the mesoderm during embryogenesis and becomes immunocompetent only at the onset of the larval stage [21]. Unexpectedly, a recent report shows that, although embryos are well-protected by a thick chorion, they can still express the AMP gene *Cecropin A* upon injection of LPS or Gram-negative bacteria [22*]. The expression of this gene, however, does not occur in the fat body but, rather, in the yolk nuclei at the early embryonic stage and in the epidermis at later stages. During the larval stage, the

Figure 2



Schematic overview of the *Drosophila* host defence. Detection of microbial pathogens (microbial elicitors indicated by yellow boxes) by recognition proteins (indicated by the orange ellipse) activates a large array of interconnected and synergistic host-defence mechanisms (indicated by other colored boxes).

size of the fat body cells increases dramatically by polyploidization and their immune competence increases under the control of ecdysone [23,24]. In the early adult stage, the larval fat body desegregates and is replaced by a new adult fat body with slightly different immune properties.

In some ways, the insect fat body plays a role similar to mammalian liver during the acute-phase immune response. The large size and the position of this tissue in the insect body cavity make the fat body a powerful machine that enables the secretion of peptides into the haemolymph and ensures that they rapidly reach their effective concentrations. The relevance of AMPs in the immune response of *Drosophila* is supported by the high susceptibility to infection of mutants that do not express AMP-encoding genes [25,26]. AMP production is only a subset of the humoral response; other induced humoral factors are likely produced in this tissue as well. So far, we still have little idea of how the fat body cells are informed to induce AMPs and how these peptides are processed and secreted.

Signalling cascades that regulate the humoral response after systemic infection

Toll and Imd pathways

Several recent studies have greatly enhanced our understanding of the *Drosophila* humoral response by characterizing new components that regulate expression of AMP-encoding genes in the fat body (for a review, see [27,28]). The current model is that each AMP-encoding gene is regulated by a balanced activity of two distinct signal transduction pathways: the Toll pathway, which is largely activated by fungal infection and Gram-positive bacteria, and the immune deficiency (Imd) pathway, which is mainly activated by Gram-negative bacteria (Figure 4). Many components of the Toll pathway were previously identified to be mutations that affect embryonic dorsoventral patterning

[29]. By contrast, factors that function in the Imd pathway to regulate antibacterial responses remained largely unknown until the past year. Recently, several studies have led to the genetic and molecular identification of six components of the Imd pathway: Imd, dTAK1, Ird5, Kenny, the Dredd caspase and the rel factor Relish [26,30,31,32,33,34,37,38,39,40]. The Imd and Toll pathways do not appear to share any intermediate components and mediate differential expression of AMP-encoding genes via distinct NF- κ B-like transcription factors [41]. These pathways exhibit striking similarities with the Toll-like receptor (TLR) and tumor necrosis factor (TNF) cascades that regulate NF- κ B activity in vertebrates, suggesting common evolutionary roots for the immune response pathways (discussed in [27,28]). However, flies use two distinct pathways for controlling distinct NF- κ B proteins, whereas, in mammals, both the TLR and TNF pathways converge to the activation of the IKK complex, which regulates NF- κ B factors. The use of two pathways in fat body cells to regulate these AMP-encoding genes may be an efficient mechanism to adapt the antimicrobial response to different aggressors by producing a specific subset of AMPs [34,38,41,42]. The mechanisms by which the promoter of each AMP-encoding gene integrates signals from the two pathways are not clear; other molecules, such as the GATA factor Serpent, may play important roles [43]. Moreover, several studies indicate some differences in the regulation of *Drosophila* AMP-encoding gene expression, depending on the developmental stage or the tissue, revealing the complexity of the regulation of AMP-encoding genes [43,44,45,46].

In addition to several developmental functions, the Toll pathway regulates the antifungal response and is required for proper haemocyte proliferation [13], as described above. Therefore, Toll activation leads to a coordinated immune response that comprises both cellular and humoral

Figure 3 legend

Immune-responsive tissues in larvae. **(a)** The lymph gland is located along the dorsal vessel of the larva and can be considered to be a reservoir of haemocytes. **(b)** Four types of haemocyte – secretory cells, plasmatocytes, crystal cells and lamellocytes – have been identified to differentiate from a pool of stem cells. Haemocyte differentiation can take place both in the lymph gland and in circulation and is under the control of conserved regulators or signalling cascades. Parts (a,b) reproduced, with permission, from [4,6**]. *srp*, *serpent*; *lz*, *lozenge*; *gcm*, *glial cell missing*. **(c)** The site of expression of antimicrobial peptides (AMPs) in the larvae is indicated. Systemic infection induces a strong expression of seven types of AMP-encoding genes (plus isoforms) in the fat body. Local infection triggers the expression of a subset of AMP-encoding genes in several epithelia [45*]. Part (c) appears courtesy of JL Imler.

response. In contrast, the Imd pathway is dispensable for proper development and cellular immune responses. Several studies suggest that, besides its role in antibacterial peptide gene regulations, the Imd cascade may be involved in apoptosis [39**,47,48].

JAK/STAT

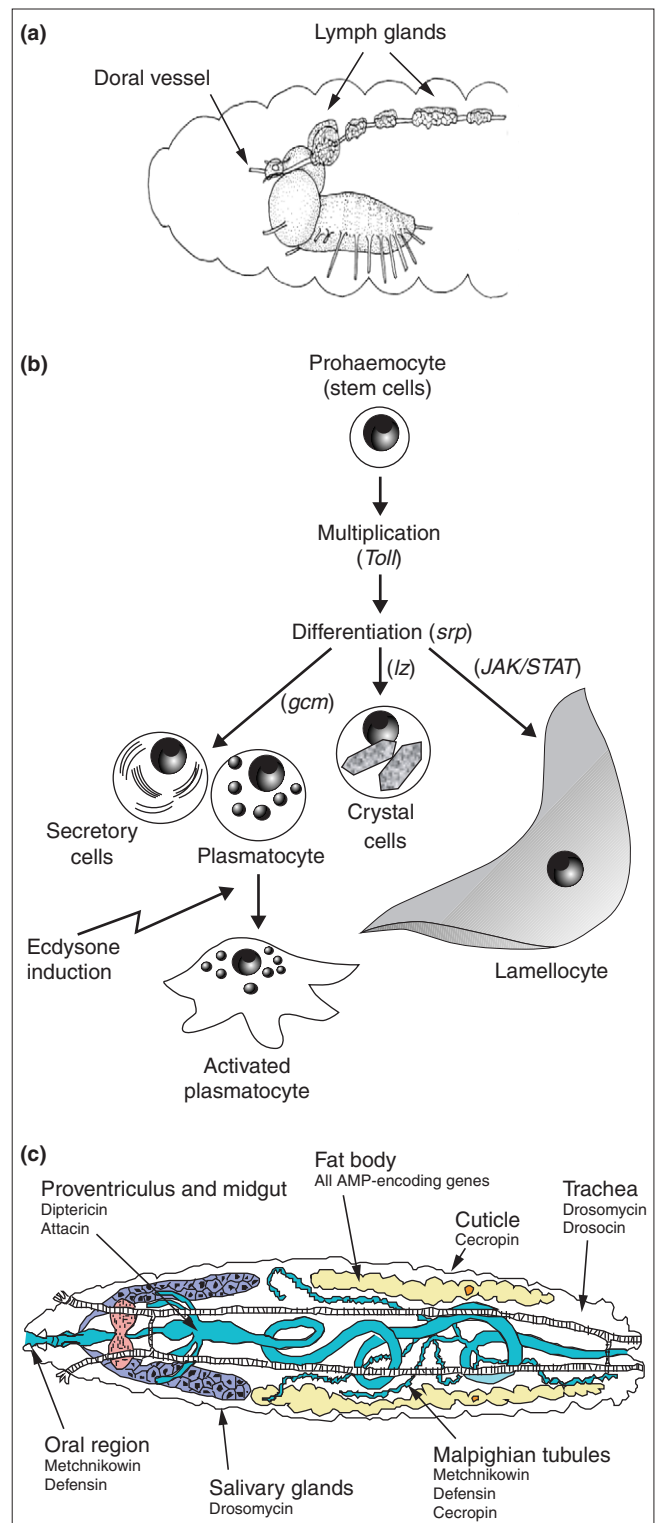
Similar to the Toll cascade, the *Drosophila* JAK/STAT pathway is involved in multiple developmental events and regulates the cellular immune response [12]. This cascade is not essential for the activation of AMP-encoding genes in *Drosophila*, although studies in mosquitoes have shown that *A. gambiae* STAT (AgSTAT) is translocated in the nucleus of fat body cells of bacterially infected mosquitoes, suggesting that this cascade controls other genes encoding humoral factors [49]. More recently, the gene encoding the complement-like protein TEP1 has been identified as a target of the JAK/STAT pathway in *Drosophila* [15*]. The stimulus that activates the JAK/STAT pathway is not yet known, but there is evidence that this pathway can be activated by the Toll cascade [15*].

Local versus systemic immune responses

The use of green fluorescent protein (GFP) reporter transgenes has revealed that AMP-encoding genes, in addition to the fat body, can also be expressed in several surface epithelia that are potentially in contact with microorganisms ([44,45*]; Figure 3c). These include the epidermis, the reproductive system, the respiratory tract and the digestive tract that are in contact with the external environment [21,44,45*]. Preliminary studies indicate a predominant role of the Imd pathway in the control of expression of AMP-encoding genes in these tissues [21,45*], but the mechanisms that regulate the tissue specificity of this local immune response remain to be explored. Epithelial expression of AMPs appears to be a general feature of multicellular organisms, given that, in both vertebrates and plants, AMPs also play a critical role in the local response to infection.

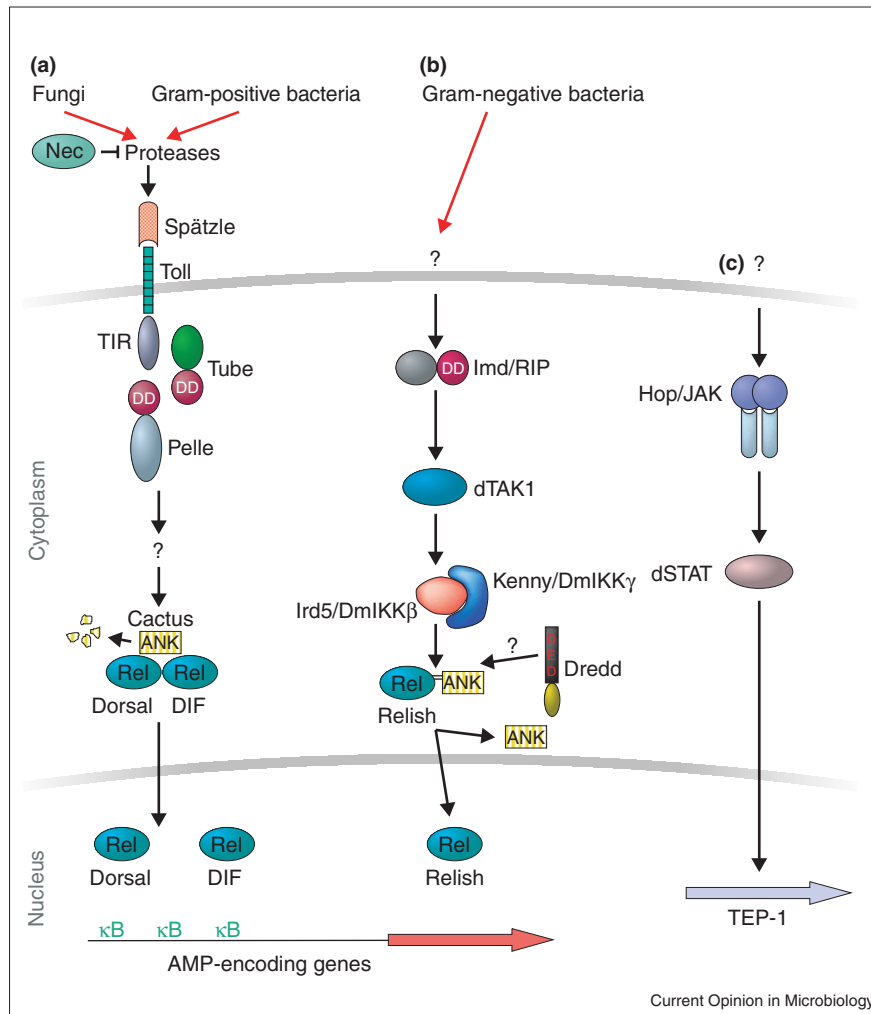
Recognition of pathogens

In *Drosophila*, the mechanisms for detecting infectious microbes are largely unknown. The current view is that some receptors can recognise surface determinants

Figure 3

(pathogen-associated molecular patterns, PAMPs) that are conserved among microbes but absent in the host. These PAMPs include LPS, peptidoglycan and mannans [50]. After recognition, the PAMP receptors may stimulate immune responses by activating extracellular proteolytic

Figure 4



The Toll, Imd and JAK/STAT pathways control the synthesis of acute-phase proteins in the fat body. (a,b) AMP-encoding genes are regulated by two signal transduction pathways: the Toll pathway and the Imd pathway. (a) In the Toll pathway, an unknown proteolytic cascade that involves the serpin Necrotic is activated upon infection and leads to processing of Spätzle [51]. Binding of Spätzle on Toll activates an intracellular signalling cascade that leads to degradation of the IκB-like protein, Cactus, and nuclear translocation of the rel proteins Dif and Dorsal. (b) Relish is a compound rel/NF-κB transactivator related to P105 [26]. In the Imd pathway, this protein is cleaved upon microbial infection and cleavage is dependent on the caspase Dredd and the IKK complex (Ird5 and Kenny) [32^{••},33,34^{••}–37^{••},40]. Epistatic studies suggest that the MAP3K dTAK1 function upstream of the IKK complex and downstream of Imd [38^{••},39^{••}]. *imd* encodes a protein with a death domain similar to that of mammalian receptor-interacting protein (RIP) [39^{••}]. For more details, see [27,28]. Note that the recognition mechanisms (indicated by a question mark) that target this cascade remain uncharacterized. ANK, ankyrin domain. (c) In the JAK/STAT pathway, observations that the expression of TEP-1 is reduced in *JAK/Hopscotch* mutants [15[•]] and that STAT is translocated into the nucleus of fat-body cells of bacterially infected mosquitoes [49] suggest that this cascade also controls the humoral response of *Drosophila*. Note that the recognition mechanisms (indicated by a question mark) that target this cascade remain uncharacterized.

casades in the haemolymph and intracellular signalling pathways in immune-responsive tissues (Figure 2).

The *Drosophila* genome encodes a large number of proteins with putative recognition properties [2]. However, to date, there is no genetic demonstration of a role for these proteins in the activation of the immune response. Even though it is now clear that the Toll and Imd pathways are selectively activated in response to different microbes, the recognition proteins that target these pathways are still unknown [27]. In contrast to some of the mammalian TLRs, *Drosophila* Toll does not appear to function as a direct sensor of microbial compounds, but is activated via an unknown proteolytic cascade by a small cytokine-like molecule termed Spätzle [25,51]. The receptors that activate the Imd pathway in response to Gram-negative bacteria have not been identified. Given that TLR4 mediates recognition of Gram-negative bacteria in mice [52], it is tempting to speculate that one of the eight other Tolls encoded by the *Drosophila* genome may function in microbial recognition in the Imd pathway. However,

expression of seven of the eight Toll homologues in cultured cells did not provide a clear demonstration of their function in the antibacterial defence [53].

Recently, two families of proteins have been implicated in pathogen recognition in *Drosophila*. Peptidoglycan recognition protein (PGRP) was identified as a Gram-positive-binding protein present in the moth *Trichoplusia ni* [54]. PGRP has also been implicated in the activation of the prophenoloxylase cascade in the silkworm *Bombyx mori* [55]. Interestingly, the *Drosophila* genome encodes 12 PGRP genes, and several of them are upregulated after septic injury [56]. In contrast to PGRP, Gram-negative-binding proteins (GNBPs) are only found in invertebrates and have been isolated as proteins that bind to LPS and β-1,3-glucan [57]. The *Drosophila* genome encodes three GNBPs and two immune-inducible-related proteins [19^{••},58]. Overexpression of *dGNBP-1* enhances LPS induction of AMP-encoding genes in cultured cells [58]. Furthermore, the observation that TEP molecules can bind to the surface of bacteria also suggests a role for these

proteins in pathogen recognition [14**]. In addition to PAMP detection, the insect may selectively recognize more specific determinants of pathogens, as shown in plant defence. Possibly, some of the signals that trigger the *Drosophila* immune response may involve other indirect mechanisms that sense the presence of pathogens through the breakage of the integument.

Monitoring the *Drosophila* immune response after different modes of infection

So far, most of our knowledge on the *Drosophila* immune response has been built upon the analysis of the host's reaction after injection of non-pathogenic bacteria in *Drosophila* larvae or adults. Recently, the use of oligonucleotide microarrays encompassing the full genome has revealed that several hundred genes out of 13 600 *Drosophila* genes are modulated after septic injury, confirming that this stimulus induces a wide-ranging response [19**]. The possibility of infecting a large number of animals in a short time and the high reproducibility of the *Drosophila* immune response after microbial injection have allowed the successful identification of key regulators of expression of AMP-encoding genes via systematic genetic mutagenesis [33,38**,59–61]. The application of similar screens will probably help to identify new factors involved in little-studied processes such as melanization and phagocytosis. In addition to the introduction of microbes into the body cavity, microbial injection results in an injury that leads to wound-healing reactions and to a stress response [62,63**]. The limitation of the injection approach is that it bypasses the first step of infection, which includes the attachment and entry of the pathogen. Recently, alternative approaches have been developed that use natural *Drosophila* pathogens and a natural mode of infection. The use of a natural mode of infection has contributed to the discovery of the ability of *Drosophila* to activate an immune response adapted to the invading organism [42], and enables the study of all the phases of infection from the initial interaction between the pathogen and its host to the activation of the immune response.

Beauveria bassiana is an entomopathogenic fungus that infects many insect species by penetrating their cuticle. Genetic experiments indicate that natural infection of *Drosophila* by this fungus leads to the expression, via the selective activation of the Toll pathway, of genes encoding antifungal activity [42]. Microarray analysis also confirms that infection by this fungus leads to a more specific immune response, compared with infection by bacterial injection [19**]. Recently, some strains of the phytopathogenic Gram-negative bacterium, *Erwinia carotovora*, which causes soft rot in fruit and uses insects as its vector, have been isolated for their capacity to trigger a systemic and local immune response in *Drosophila* larvae after gut infection [64*]. In this case, the immune response is largely mediated by the Imd pathway [38**,45*]. Finally, parasitoid wasps that inject their eggs into young instar larvae are among the most formidable pests to *Drosophila* in nature. Resistance

to parasitoid infection is correlated with the capacity of the host to encapsulate the wasp eggs. The interactions between *Drosophila* and several wasp species provide a model to analyse cellular reactions [65–68].

Drosophila as a model host for studying human pathogens

The idea of using simple, genetically tractable host organisms to study the virulence mechanisms of human pathogens has recently emerged. Studies from several groups have clearly established the nematode *Caenorhabditis elegans* as an attractive model host for the study of *Pseudomonas aeruginosa* and *Salmonella typhimurium* pathogenesis [69,70]. *P. aeruginosa* has previously been shown to be highly pathogenic to *Drosophila* [71], and it is now the focus of several groups that use *Drosophila* as an alternative model system to study this important pathogen. *Drosophila* can be used to screen for *P. aeruginosa* mutants with reduced virulence and to analyse the complex interactions between this bacterium and the innate host defence response [72,73].

Other pathogens that can be studied using *Drosophila* as a model host are human parasites transmitted by insects. Interestingly, *Plasmodium gallinaceum* ookinetes injected into *Drosophila* develop into infectious sporozoites, indicating that this parasitic step can be reproduced. The use of genetic screens in *Drosophila* may thus shed light on the host requirements for *Plasmodium* development and survival [74*].

Conclusions

Our knowledge of the *Drosophila* immune response has been greatly enhanced in the past year. Some aspects, such as the function of the Toll and Imd pathways in the induction of antimicrobial peptides, have been partially clarified. However, the molecular mechanisms of other critical cellular and humoral immune responses, including phagocytosis, encapsulation, melanization and coagulation, remain unknown. Two of the most important areas for research concern the mechanisms by which pathogens are recognised and how recognition leads to the activation of the immune response. The potential use of genetic and molecular analyses in *Drosophila*, combined with the fly's complete genome sequence and with new techniques such as microarray analysis, suggests that more aspects of the immune response will be unravelled. In addition, the development of alternative methods of infection that use natural *Drosophila* pathogens offers the possibility of studying the immune response under the conditions of a real infection. Finally, completion of the genome sequencing of other insect species, such as *B. mori* and *A. gambiae*, will enable interesting comparative studies and may improve our understanding of how insects resist microbial infections.

Acknowledgements

We thank Jean Luc Imler, Marie Meister and Jacques Rouault for providing figures. EDG is funded by a postdoctoral fellowship from the Human Frontier Science Program and PT is funded by a pre-doctoral fellowship of the Fondation pour la Recherche Médicale.

References and recommended reading

Papers of particular interest, published within the annual period of review, have been highlighted as:

- of special interest
- of outstanding interest

1. Hoffmann J, Reichhart J: **Drosophila immunity**. *Trends Cell Biol* 1997, **7**:309-316.
2. Khush RS, Lemaitre B: **Genes that fight infection: what the Drosophila genome says about animal immunity**. *Trends Genet* 2000, **16**:442-449.
3. Kimbrell DA, Beutler B: **The evolution and genetics of innate immunity**. *Nat Rev Genet* 2001, **2**:256-267.
4. Shrestha R, Gateff E: **Ultrastructure and cytochemistry of the cell types in the larval hematopoietic organs and hemolymph of Drosophila melanogaster**. *Dev Growth Differ* 1982, **24**:65-82.
5. Rizki T, Rizki R: **The cellular defense system of Drosophila melanogaster**. In *Insect Ultrastructure*, vol 2. Edited by King R, Akai H. New York: Plenum Publishing Corporation; 1984:579-604.
6. Lanot R, Zachary D, Holder F, Meister M: **Post-embryonic hematopoiesis in Drosophila**. *Dev Biol* 2000, **230**:243-257.
This paper provides an extensive description of *Drosophila* hematopoiesis during post-embryonic development.
7. Hartenstein V, Jan YN: **Studying Drosophila embryogenesis with P-lacZ enhancer trap lines**. *Roux's Arch Dev Biol* 1992, **201**:194-220.
8. Franc NC, Heitzler P, Ezekowitz RA, White K: **Requirement for croquemort in phagocytosis of apoptotic cells in Drosophila**. *Science* 1999, **284**:1991-1994.
9. Rehorn KP, Thelen H, Michelson AM, Reuter R: **A molecular aspect of hematopoiesis and endoderm development common to vertebrates and Drosophila**. *Development* 1996, **122**:4023-4031.
10. Lebestky T, Chang T, Hartenstein V, Banerjee U: **Specification of Drosophila hematopoietic lineage by conserved transcription factors**. *Science* 2000, **288**:146-149.
This paper shows that *Drosophila* hematopoiesis lineage commitment is controlled by the transcription factors Lozenge, Serpent and Glial cell missing. Their results reveal striking similarities between the mechanisms that control blood cells development in mammals and in *Drosophila*.
11. Fossett N, Tevosian SG, Gajewski K, Zhang Q, Orkin SH, Schulz RA: **The Friend of GATA proteins U-shaped, FOG-1, and FOG-2 function as negative regulators of blood, heart, and eye development in Drosophila**. *Proc Natl Acad Sci USA* 2001, **98**:7342-7347.
12. Zeidler MP, Bach EA, Perrimon N: **The roles of the Drosophila JAK/STAT pathway**. *Oncogene* 2000, **19**:2598-2606.
13. Qiu P, Pan PC, Govind S: **A role for the Drosophila Toll/Cactus pathway in larval hematopoiesis**. *Development* 1998, **125**:1909-1920.
14. Levashina EA, Moita LF, Blandin S, Vriend G, Lagueux M, Kafatos FC: **Conserved role of a complement-like protein in phagocytosis revealed by dsRNA knockout in cultured cells of the mosquito, Anopheles gambiae**. *Cell* 2001, **104**:709-718.
Using a dsRNA knockout in cultured cells of the mosquito *Anopheles gambiae*, this functional study indicates the role of a thiol ester protein called aTEP-1 in opsonization. This study suggests that aTEP-1 binds to the surface of both Gram-negative and Gram-positive bacteria and promotes phagocytosis by haemocytes. Given the sequence similarities between TEPs and vertebrate complement factors C3 and α -2-macroglobulin, these data point to the ancient origin of complement-like proteins in promoting phagocytosis.
15. Lagueux M, Perrodou E, Levashina EA, Capovilla M, Hoffmann JA: **Constitutive expression of a complement-like protein in toll and JAK gain-of-function mutants of Drosophila**. *Proc Natl Acad Sci USA* 2000, **97**:11427-11432.
This paper reports that the *Drosophila* genome encodes four TEP-encoding genes. One of them, *dTEP1*, is regulated by the JAK-STAT pathway.
16. Theopold U, Li D, Fabbri M, Scherfer C, Schmidt O: **The coagulation of insect hemolymph**. *Cell Mol Life Sci* 2002, in press.
17. Söderhäll K, Cerenius L: **Role of prophenoloxidase-activating system in invertebrate immunity**. *Curr Opin Immunol* 1998, **10**:23-28.
18. Iwanaga S, Kawabata S, Miura Y, Seki N, Shigenaga T, Muta T: **Clotting cascade in the immune response of the horseshoe crab**. In *Phylogenetic Perspectives in Immunity: the Insect Host Defense*. Edited by Hoffmann JA, Austin: RG Landes Company; 1994:79-96. [Molecular Biology Intelligence Unit]
19. De Gregorio E, Spellman PT, Rubin GM, Lemaitre B: **Genome-wide analysis of the Drosophila immune response using oligonucleotide microarrays**. *Proc Natl Acad Sci USA* 2001, **98**:12590-12595.
High-density oligonucleotide microarrays encompassing nearly the full genome were used to monitor the expression profile of adult flies in response to septic injury and natural fungal infection. This study reports the identification of several hundreds of immune-regulated genes. The analysis of these genes represents a challenge for the future.
20. Hedengren M, Borge K, Hultmark D: **Expression and evolution of the Drosophila attacin/diptericin gene family**. *Biochem Biophys Res Commun* 2000, **279**:574-581.
21. Tingvall TO, Roos E, Engstrom Y: **The imd gene is required for local cecropin expression in Drosophila barrier epithelia**. *EMBO Rep* 2001, **2**:239-243.
22. Tingvall TO, Roos E, Engstrom Y: **The GATA factor Serpent is required for the onset of the humoral immune response in Drosophila embryos**. *Proc Natl Acad Sci USA* 2001, **98**:3884-3888.
This is the first paper to report that embryos can express the antibacterial peptide gene *Cecropin A* upon injection of LPS or Gram-negative bacteria.
23. Reichhart J, Meister M, Dimarcq J, Zachary D, Hoffmann D, Ruiz C, Richards G, Hoffmann J: **Insect immunity: developmental and inducible activity of the Drosophila diptericin promoter**. *EMBO J* 1992, **11**:1469-1477.
24. Meister M, Richards G: **Ecdysone and insect immunity: the maturation of the inducibility of the diptericin gene in Drosophila larvae**. *Insect Biochem Mol Biol* 1996, **26**:155-160.
25. Lemaitre B, Nicolas E, Michaut L, Reichhart J, Hoffmann J: **The dorsoventral regulatory gene cassette spätzle/Toll/cactus controls the potent antifungal response in Drosophila adults**. *Cell* 1996, **86**:973-983.
26. Hedengren M, Asling B, Dushay MS, Ando I, Ekengren S, Wihlborg M, Hultmark D: **Relish, a central factor in the control of humoral but not cellular immunity in Drosophila**. *Mol Cell* 1999, **4**:827-837.
27. Khush RS, Leulier F, Lemaitre B: **Drosophila immunity: two paths to NF- κ B**. *Trends in Immunol* 2001, **22**:260-264.
28. Silverman N, Maniatis T: **NF- κ B signaling pathways in mammalian and insect innate immunity**. *Genes Dev* 2001, **15**:2321-2342.
29. Belvin MP, Anderson KV: **A conserved signaling pathway: the Drosophila toll-dorsal pathway**. *Annu Rev Cell Dev Biol* 1996, **12**:393-416.
30. Lemaitre B, Kromer-Metzger E, Michaut L, Nicolas E, Meister M, Georgel P, Reichhart J, Hoffmann J: **A recessive mutation, immune deficiency (imd), defines two distinct control pathways in the Drosophila host defense**. *Proc Natl Acad Sci USA* 1995, **92**:9365-9469.
31. Kim YS, Han SJ, Ryu JH, Choi KH, Hong YS, Chung YH, Perrot S, Raibaud A, Brey PT, Lee WJ: **Lipopolysaccharide-activated kinase, A an essential component for the induction of the antimicrobial peptide genes in Drosophila melanogaster cells**. *J Biol Chem* 2000, **275**:2071-2079.
32. Silverman N, Zhou J, Stöven S, Pandey N, Hultmark D, Maniatis T: **Drosophila I κ B kinase complex required for Relish cleavage and antibacterial immunity**. *Genes Dev* 2000, **14**:2461-2471.
This study demonstrates that DmIKK β /Ird5 and DmIKK γ /Kenny interact together and regulate Relish cleavage and activation. The data are supported by genetic analyses showing that mutations in *ird5* and *kenny* generate phenotypes similar to the *imd* and *relish* mutations [36*,37*]. Taken together, this paper and [36*,37*] demonstrate the existence of an IKK complex that functions only in the antibacterial defense.
33. Elrod-Erickson M, Mishra S, Schneider D: **Interactions between the cellular and humoral immune responses in Drosophila**. *Curr Biol* 2000, **10**:781-784.
34. Leulier F, Rodriguez A, Khush RS, Chen P, Abrams JM, Lemaitre B: **The Drosophila caspase Dredd is required to resist Gram-negative bacterial infection**. *EMBO Rep* 2000, **1**:353-358.
This genetic study, along with [33], demonstrates that the Dredd caspase regulates *Drosophila* antibacterial response. Along with [36*,38*,41,42], this study provides evidence that the *imd* pathway is largely activated in response to infection with Gram-negative bacteria, whereas the Toll pathway is mainly activated in response to infection with Gram-positive bacteria and with fungi.

35. Stöven S, Ando I, Kadalayil L, Engström Y, Hultmark D: **Activation of the *Drosophila* NF- κ B factor Relish by rapid endoproteolytic cleavage.** *EMBO Rep* 2000, 1:347-352.
This study, along with [32**,39**], demonstrates that Relish is processed upon infection by an endoproteolytic mechanism that is not proteasome-dependent but requires the caspase Dredd.
36. Rutschmann S, Jung AC, Zhou R, Silverman N, Hoffmann JA, Ferrandon D: **Role of *Drosophila* IKK γ in a Toll-independent antibacterial immune response.** *Nat Immunol* 2000, 1:342-347.
See annotations to [32**] and [34*].
37. Lu Y, Wu LP, Anderson KV: **The antibacterial arm of the *Drosophila* innate immune response requires an I κ B kinase.** *Genes Dev* 2001, 15:104-110.
See annotation to [32**].
38. Vidal S, Khush RS, Leulier F, Tzou P, Nakamura M, Lemaitre B: **Mutations in the *Drosophila* dTAK1 gene reveal a conserved function for MAPKKKs in the control of rel/NF- κ B-dependent innate immune responses.** *Genes Dev* 2001, 15:1900-1912.
This genetic study demonstrates that the *Drosophila* MAPKKK dTAK1 regulates *Drosophila* antibacterial defence. Epistatic studies indicate that dTAK1 functions downstream of Imd and upstream of the IKK complex.
39. Georgel P, Naitza S, Kappler C, Ferrandon D, Zachary D, Swimmer C, Kocczynski C, Duyk G, Reichhart J, Hoffmann J: ***Drosophila* immune deficiency (IMD) is a death domain protein that activates antibacterial defence and can promote apoptosis.** *Dev Cell* 2001, in press.
This study shows that the *imd* gene encodes a protein with a death domain that shows some similarities with the mammalian receptor-interacting protein (RIP). Overexpression of *imd* leads to apoptosis.
40. Cornwell WD, Kirkpatrick RB: **Cactus-independent nuclear translocation of *Drosophila* RELISH.** *J Cell Biochem* 2001, 82:22-37.
41. Rutschmann S, Jung AC, Hetru C, Reichhart JM, Hoffmann JA, Ferrandon D: **The Rel protein DIF mediates the antifungal but not the antibacterial host defence in *Drosophila*.** *Immunity* 2000, 12:569-580.
42. Lemaitre B, Reichhart J, Hoffmann J: ***Drosophila* host defense: differential induction of antimicrobial peptide genes after infection by various classes of microorganisms.** *Proc Natl Acad Sci USA* 1997, 94:14614-14619.
43. Petersen UM, Kadalayil L, Rehorn KP, Hoshizaki DK, Reuter R, Engstrom Y: **Serpent regulates *Drosophila* immunity genes in the larval fat body through an essential GATA motif.** *EMBO J* 1999, 18:4013-4022.
44. Ferrandon D, Jung AC, Crique M, Lemaitre B, Uttenweiler-Joseph S, Michaut L, Reichhart J, Hoffmann JA: **A drosomycin-GFP reporter transgene reveals a local immune response in *Drosophila* that is not dependent on the Toll pathway.** *EMBO J* 1998, 17:1217-1227.
45. Tzou P, Ohresser S, Ferrandon D, Capovilla M, Reichhart JM, Lemaitre B, Hoffmann JA, Imler JL: **Tissue-specific inducible expression of antimicrobial peptide genes in *Drosophila* surface epithelia.** *Immunity* 2000, 13:737-748.
This study, along with [44], reveals the complex pattern of expression of antimicrobial peptide genes on surface epithelia. Along with [21], this paper also indicates a predominant role of the Imd pathway in the control of expression of AMP-encoding genes in these tissues.
46. Manfrulli P, Reichhart JM, Steward R, Hoffmann JA, Lemaitre B: **A mosaic analysis in *Drosophila* fat body cells of the control of antimicrobial peptide genes by the Rel proteins Dorsal and DIF.** *EMBO J* 1999, 18:3380-3391.
47. Chen P, Rodriguez A, Erskine R, Thach T, Abrams JM: **Dredd, a novel effector of the apoptosis activators reaper, grim, and hid in *Drosophila*.** *Dev Biol* 1998, 201:202-216.
48. Takatsu Y, Nakamura M, Stapleton M, Danos MC, Matsumoto K, O'Connor MB, Shibuya H, Ueno N: **TAK1 participates in c-Jun N-terminal kinase signaling during *Drosophila* development.** *Mol Cell Biol* 2000, 20:3015-3026.
49. Barillas-Mury C, Han YS, Seeley D, Kafatos FC: ***Anopheles gambiae* Ag-STAT, a new insect member of the STAT family, is activated in response to bacterial infection.** *EMBO J* 1999, 18:959-967.
50. Medzhitov R, Janeway CA Jr: **Innate immunity: the virtues of a nonclonal system of recognition.** *Cell* 1997, 91:295-298.
51. Levashina EA, Langley E, Green C, Gubb D, Ashburner M, Hoffmann JA, Reichhart JM: **Constitutive activation of toll-mediated antifungal defense in serpin-deficient *Drosophila*.** *Science* 1999, 285:1917-1919.
52. Beutler B: **Tlr4: central component of the sole mammalian LPS sensor.** *Curr Opin Immunol* 2000, 12:20-26.
53. Tauszig S, Jouanguy E, Hoffmann JA, Imler JL: **Toll-related receptors and the control of antimicrobial peptide expression in *Drosophila*.** *Proc Natl Acad Sci USA* 2000, 97:10520-10525.
54. Kang D, Liu G, Lundstrom A, Gelius E, Steiner H: **A peptidoglycan recognition protein in innate immunity conserved from insects to humans.** *Proc Natl Acad Sci USA* 1998, 95:10078-10082.
55. Yoshida H, Kinoshita K, Ashida M: **Purification of a peptidoglycan recognition protein from hemolymph of the silkworm, *Bombyx mori*.** *J Biol Chem* 1996, 271:13854-13860.
56. Werner T, Liu G, Kang D, Ekengren S, Steiner H, Hultmark D: **A family of peptidoglycan recognition proteins in the fruit fly *Drosophila melanogaster*.** *Proc Natl Acad Sci USA* 2000, 97:13772-13777.
57. Lee W, Lee J, Kravchenko V, Ulevitch R, Brey P: **Purification and molecular cloning of an inducible Gram-negative bacteria-binding protein from the silkworm, *Bombyx mori*.** *Proc Natl Acad Sci USA* 1996, 93:7888-7893.
58. Kim YS, Ryu JH, Han SJ, Choi KH, Nam KB, Jang IH, Lemaitre B, Brey PT, Lee WJ: **Gram-negative bacteria-binding protein, a pattern recognition receptor for lipopolysaccharide and beta-1,3-glucan that mediates the signaling for the induction of innate immune genes in *Drosophila melanogaster* cells.** *J Biol Chem* 2000, 275:32721-32727.
59. Wu LP, Anderson KV: **Regulated nuclear import of Rel proteins in the *Drosophila* immune response.** *Nature* 1998, 392:93-97.
60. Jung AC, Crique MC, Rutschmann S, Hoffmann JA, Ferrandon D: **Microfluorometer assay to measure the expression of beta-galactosidase and green fluorescent protein reporter genes in single *Drosophila* flies.** *Biotechniques* 2001, 30:594-598, 600-601.
61. Wu LP, Choe K-M, Anderson KV: ***Drosophila* immunity: Genes on the third chromosome required for the response to bacterial infection.** *Genetics* 2001, 159:189-199.
62. Ekengren S, Hultmark D: **A family of *Turandot*-related genes in the humoral stress response of *Drosophila*.** *Biochem Biophys Res Commun* 2001, 284:998-1003.
63. Ekengren S, Tryselius Y, Dushay MS, Liu G, Steiner H, Hultmark D: **A humoral stress response in *Drosophila*.** *Curr Biol* 2001, 11:714-718.
This is the first report to indicate that stress induces a humoral systemic response – the synthesis of a family of small peptides called Turandot.
64. Basset A, Khush R, Braun A, Gardan L, Boccard F, Hoffmann J, Lemaitre B: **The phytopathogenic bacteria, *Erwinia carotovora*, infects *Drosophila* and activates an immune response.** *Proc Natl Acad Sci USA* 2000, 97:3376-3381.
This study reports the identification of bacterial strains of the *Erwinia* genus, which can activate a systemic antibacterial response after natural infection. *Erwinia* are phytopathogenic bacteria that use *Drosophila* as an insect vector. The *Drosophila*–*Erwinia* interaction provides a powerful tool to study *Drosophila* immune response after infection by Gram-negative bacteria.
65. Russo J, Dupas S, Frey F, Carton Y, Brehelin M: **Insect immunity: early events in the encapsulation process of parasitoid (*Leptopilina boulardi*) eggs in resistant and susceptible strains of *Drosophila*.** *Parasitology* 1996, 112:135-142.
66. Chiu H, Sorrentino RP, Govind S: **Suppression of the *Drosophila* cellular immune response by *Ganaspis xanthopoda*.** *Adv Exp Med Biol* 2001, 484:161-167.
67. Govind S, Melk JP, Morales J: **Developmental arrest and physical entrapment eliminates supernumerary *Ganaspis xanthopoda* parasitoids in *Drosophila melanogaster*.** *J Parasitol* 2000, 86:463-470.
68. Vass E, Nappi AJ: **Developmental and immunological aspects of *Drosophila*–parasitoid relationships.** *J Parasitol* 2000, 86:1259-1270.
69. Rahme LG, Ausubel FM, Cao H, Drenkard E, Goumnerov BC, Lau GW, Mahajan-Miklos S, Plotnikova J, Tan MW, Tsongalis J et al.: **Plants and animals share functionally common bacterial virulence factors.** *Proc Natl Acad Sci USA* 2000, 97:8815-8821.

70. Ewbank J: **Tackling both sides of the host-pathogen equation with *C. elegans***. *Microbes Infect* 2002, **4**:in press.
71. Boman HG, Nilsson I, Rasmuson B: **Inducible antibacterial defence system in *Drosophila***. *Nature* 1972, **237**:232-235.
72. Chugani SA, Whiteley M, Lee KM, D'Argenio D, Manoil C, Greenberg EP: **QscR, a modulator of quorum-sensing signal synthesis and virulence in *Pseudomonas aeruginosa***. *Proc Natl Acad Sci USA* 2001, **98**:2752-2757.
73. D'Argenio DA, Gallagher LA, Berg CA, Manoil C: ***Drosophila* as a model host for *Pseudomonas aeruginosa* infection**. *J Bacteriol* 2001, **183**:1466-1471.
74. Schneider D, Shahabuddin M: **Malaria parasite development in a •• *Drosophila* model**. *Science* 2000, **288**:2376-2379.
This study reports that *Plasmodium gallinaceum* ookinetes injected into the fly can develop into infectious sporozoites. *Drosophila* can be used as an alternative model to study the host requirements for this important human parasite.