



Le nouveau
Rolex Learning Center



Thomas.Guignard@epfl.ch
Bibliothèque de l'EPFL
Responsable
Développement des Collections
et Appui Académique

Colloque « Quelle nouvelle bibliothèque? »
Besançon, 29 juin 2010

De qui parlons-nous?

2 Ecoles Polytechniques Fédérales

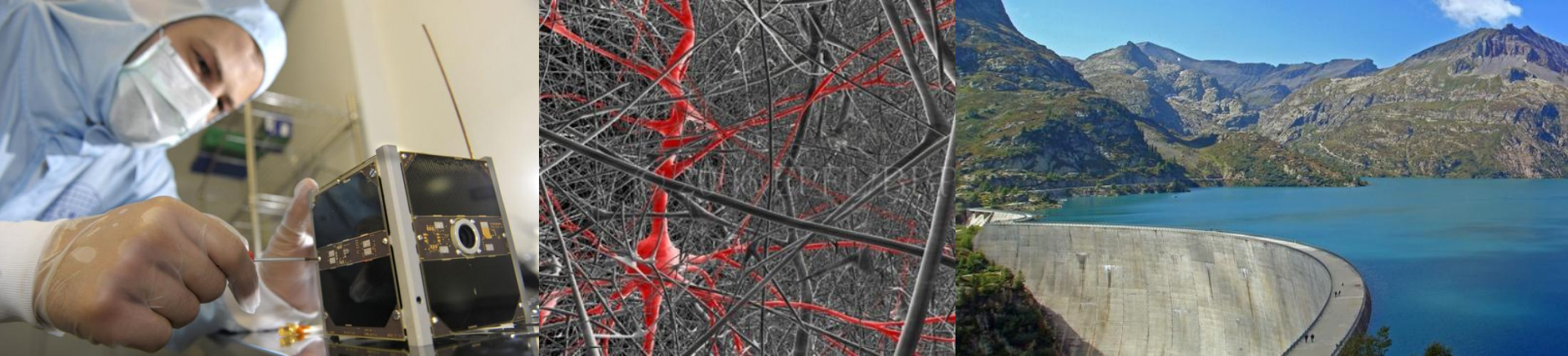


10 Universités cantonales

+ plusieurs Hautes Ecoles Spécialisées (HES)

Une école d'ingénieurs locale ... de renommée internationale

5'000 étudiants Ba/Ma – 2'000 doctorants – 270 professeurs – 3'500 employés

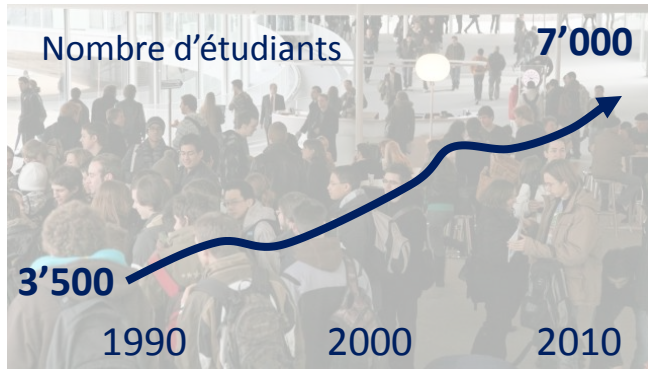


107 nationalités – 40% étudiants internationaux – 60% du corps enseignant



Budget annuel : 300 M€ + 100 M€ fonds de tiers

Un campus en pleine expansion



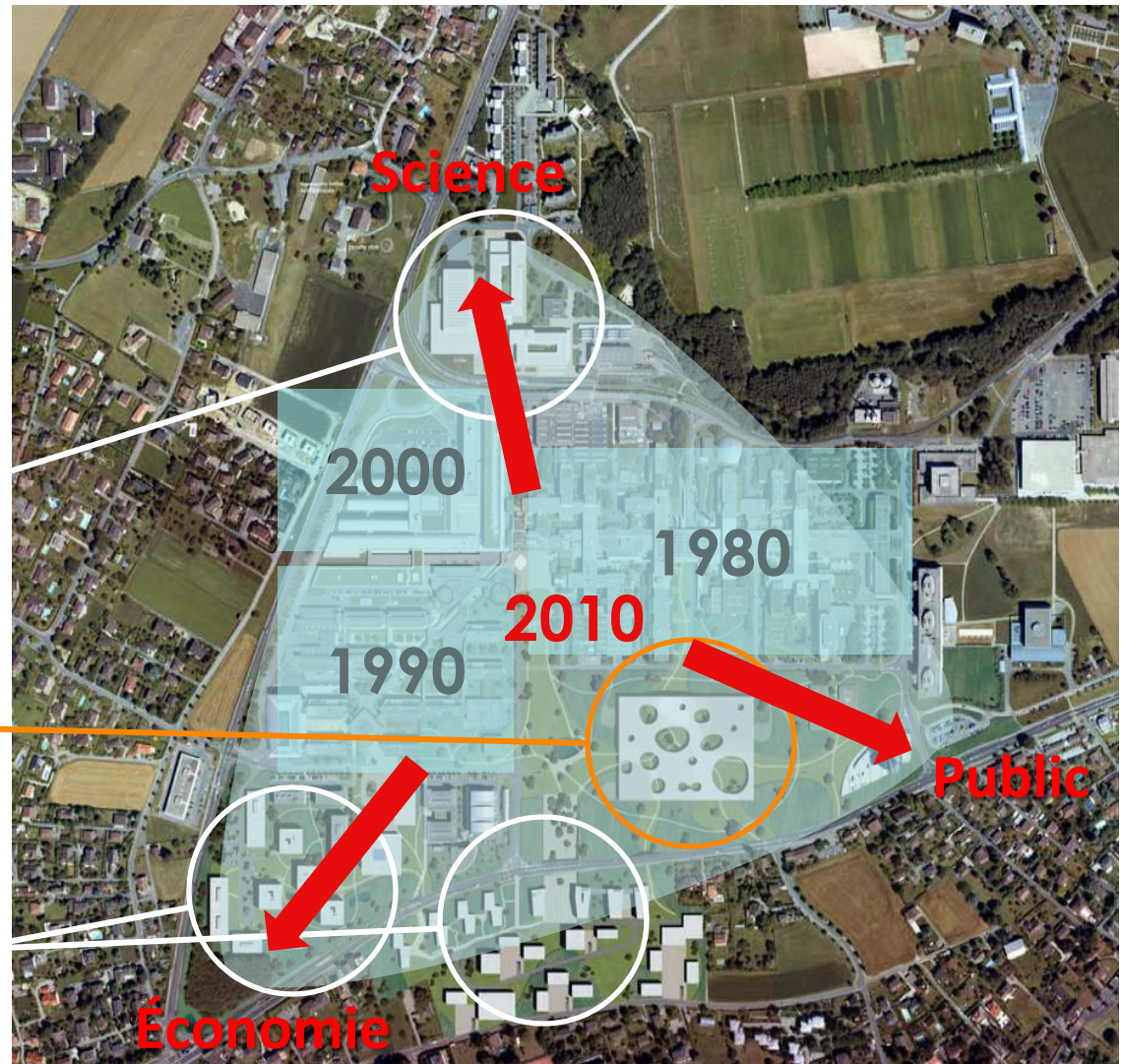
Centre de congrès (2012)



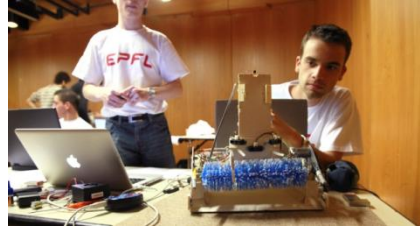
Rolex Learning Center (2010)



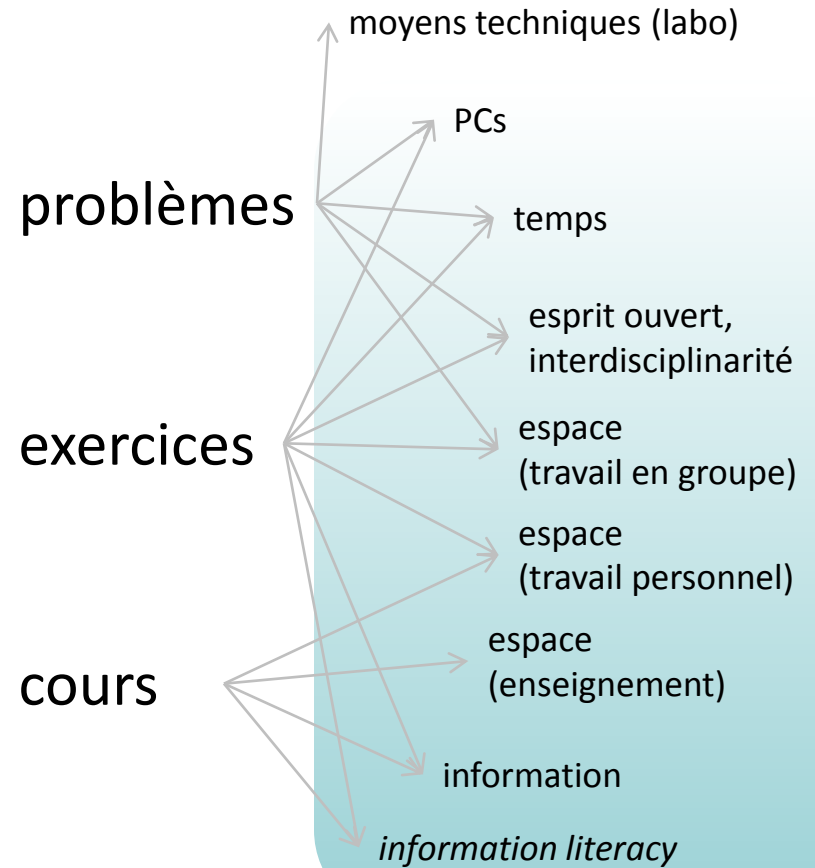
Business centre, hôtel, logements



L'enseignement évolue : l'équation bolognaise



1 crédit =
30 heures de travail



Learning Center

Les bibliothèques évoluent : Learning Centres, Information Commons

Sheffield Hallam University
SHARPENS YOUR THINKING

Home Courses University Sheffield News Events Services

Learning centres

We have a learning centre each can choice of study spaces for individual learning. You can book group study in advance. There's also somewhere and take a break from your studies.

In our learning centres you'll be able to:

- academic library resources
- electronic information resources

Our Services

- Services for Students
 - Support Services
 - The Base
- Search this site
- Contacts & Maps
- University Prospectus

The Saltire Centre

Home | Our Services | The Building | Tours & Events

The University Of Sheffield

Information Commons

Study at Sheffield For Current Students For Staff Our Research Departments & Services Useful Links News & Events

You are here: Home / Departments / Information Commons / Visitors

Home Information for Student Information for Staff Information for Visitors News and Events

Faciliteiten

- Centraal Informatie Centrum
- hogeschoolkrant Punt
- restaurant
- Xplora
- boeken/dictaten
- computers
- Eduroam draadloos internet
- werkplekken
- winkel
- repro
- begeleiding
- studerende met functiebeperking
- aankomende studenten

Xplora

Xplora is een onderdeel van het eigentijdse onderwijsconcept van Avans Hogeschool. Het ontwikkelen van competenties staat daarbij centraal. Daarom biedt Xplora de student moderne faciliteiten, zoals:

- supersnelle pc's met toegang tot: hogeschoolnetwerk (ook draadloos), applicaties, elektronische leeromgeving (blackboard) en internet
- werkplekken (reserveerbaar via een online reservesysteem): individueel, groepen, vergaderruimten, stilteplekken, voorzieningen voor mindervaliden
- informatie: fysiek (boeken, tijdschriften, cd-roms etc.) en digitaal (internet en speciale databanken)
- multimedievoorzieningen, zoals o.a. een televisie-opnamestudio
- randvoorzieningen: kopieerapparaten, plotters, scanners, printers, whiteboards, smartboards etc.
- ontmoetingsplekken: aantrekkelijke gebouwen met leestafels, meeting points, koffiecorners en een internetcafé

Xplora

Transforming learning experiences

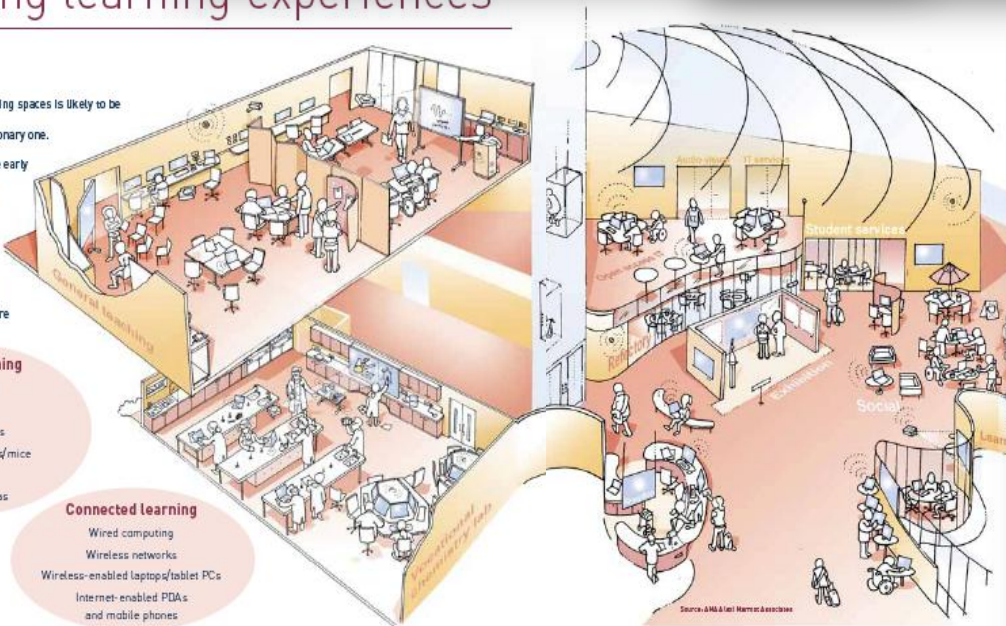
Embedding technology into learning and teaching spaces is likely to be an evolutionary process rather than a revolutionary one. Considering technological requirements at the early stages of planning will ensure that maximum benefit can be obtained from the investment. Start by establishing your pedagogic aims, then review the design and the technological infrastructure in the whole institution, to ensure that your aims can be achieved.

Mobile learning

- Tablet PCs
- Laptops
- Mobile phones
- Wireless keyboard/mice
- PDA's
- Digital cameras

Connected learning

- Wired computing
- Wireless networks
- Wireless-enabled laptop/tablet PCs
- Internet-enabled PDA's and mobile phones



Visual and interactive learning

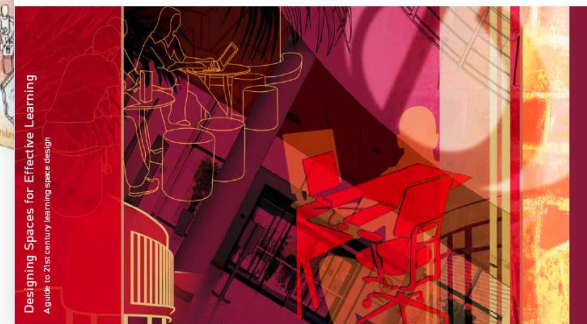
- Video conferencing
- Video streaming
- Image projection
- Interactive whiteboards
- Voting devices

Supported learning

- Assistive technologies
- Accessible USB ports
- Audio-visual prompts
- Video recording facilities

JISC

Designing Spaces for Effective Learning
A guide to 21st century learning space design



Programme fonctionnel

espace de formation

places de travail
(900 places)

BIBLIOTHÈQUE

SERVICES

librairie

banque

accueil de la
bibliothèque

salles de
travail en groupe

expositions

café

RESTAURATION

SALLE
MULTI-FONCTIONS

self-service

restaurant

Programme fonctionnel

espace de formation

Collections
Ma + niveau recherche

places de travail
(900 places)

Collections
Ba + grand public

administration de la
bibliothèque

BIBLIOTHÈQUE

BUREAUX

SERVICES

librairie

banque

accueil de la
bibliothèque

salles de
travail en groupe

quotidiens

expositions

café

livres précieux

RESTAURATION

SALLE
MULTI-FONCTIONS

self-service

restaurant

Programme fonctionnel

espace de formation

associations d'étudiants
et anciens étudiants

centre de carrière

librairie

banque

**SALLE
MULTI-FONCTIONS**

places de travail
(900 places)

BIBLIOTHÈQUE

accueil de la
bibliothèque

accueil du
bâtiment

quotidiens

café

RESTAURATION

self-service

Collections
Ba + grand public

livres précieux

Collections
Ma + niveau recherche

administration de la
bibliothèque

BUREAUX

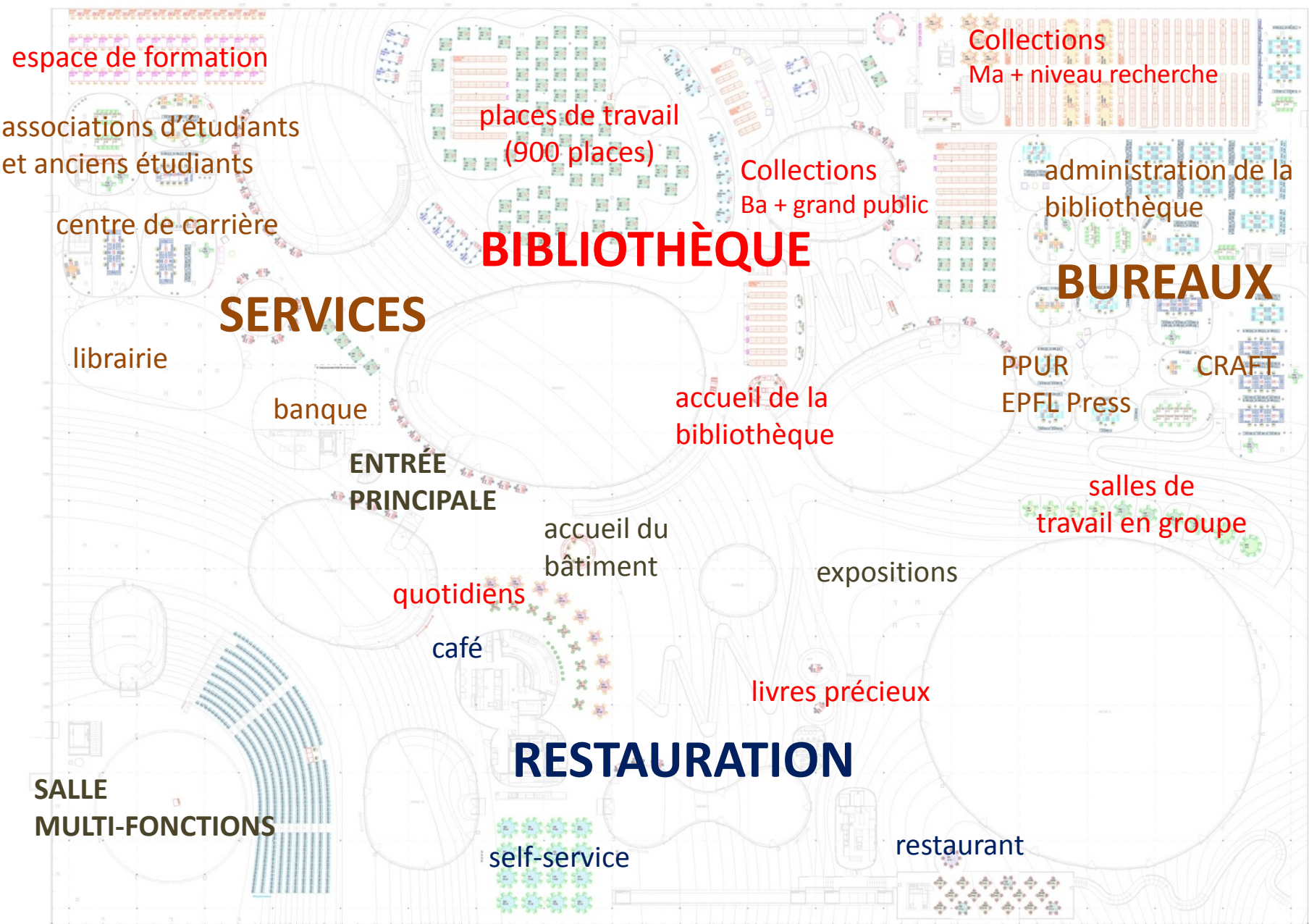
PPUR
EPFL Press

CRAFT

salles de
travail en groupe

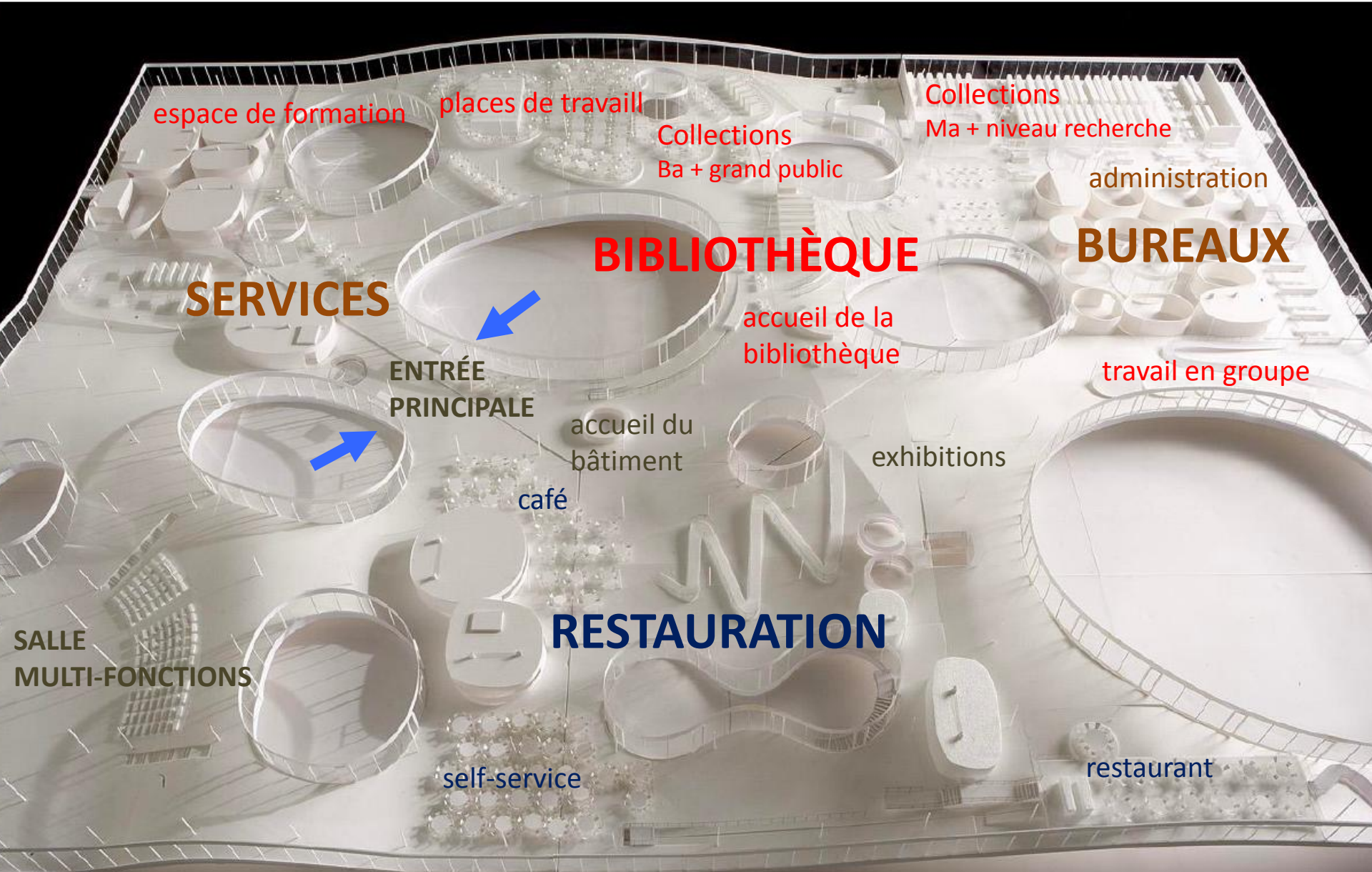
restaurant

Des services répartis sur une même surface



+ sous-sol: étagères mobiles, parking, stocks...

Un espace en trois dimensions

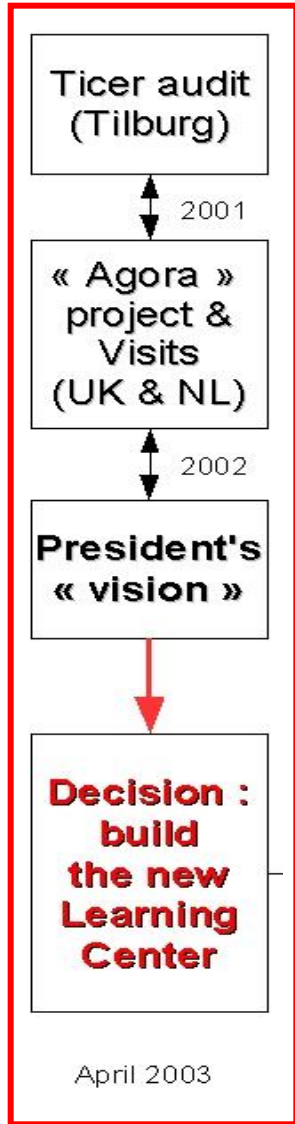


10 ans de préparatifs

Electrochoc:

coupes budgétaires

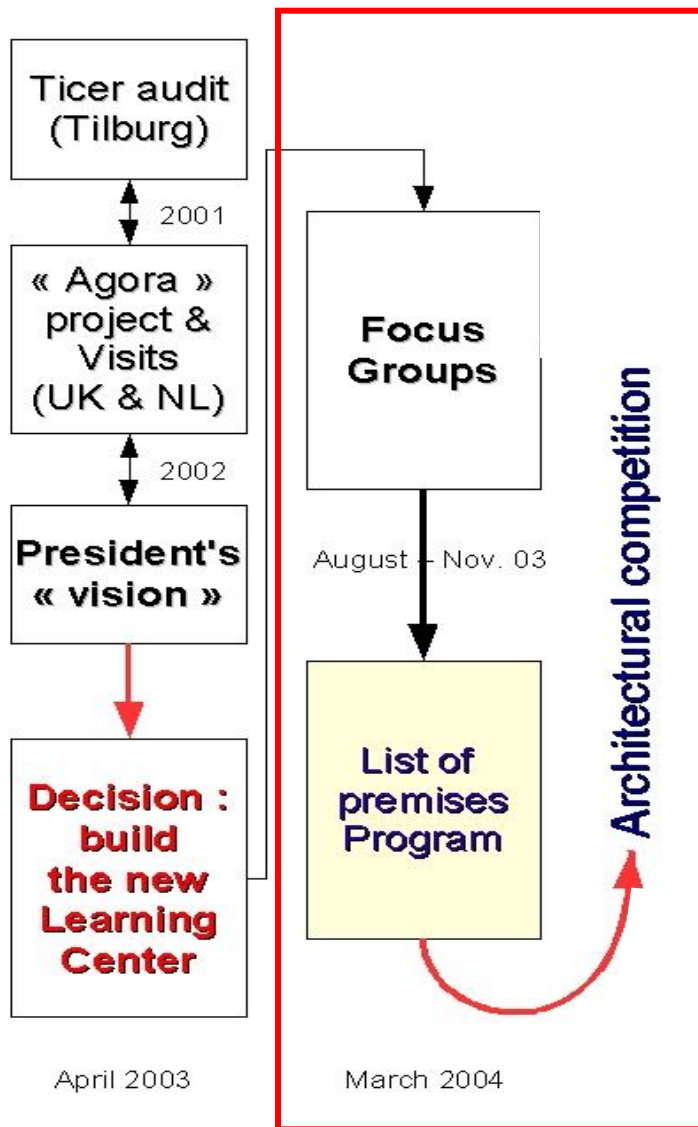
+ bibliothèques EPFL en crise



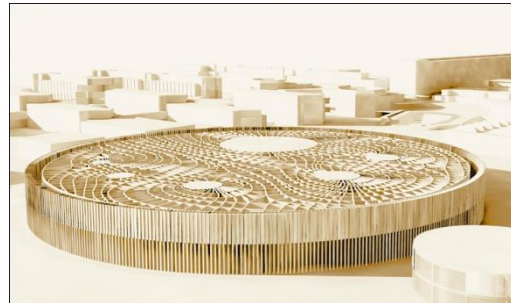
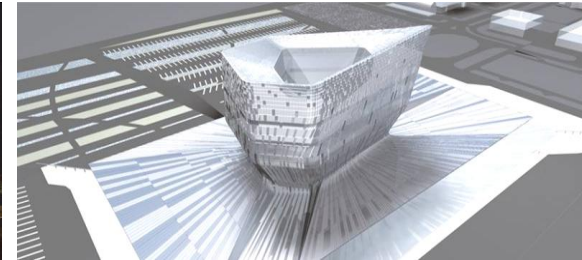
Phase 1



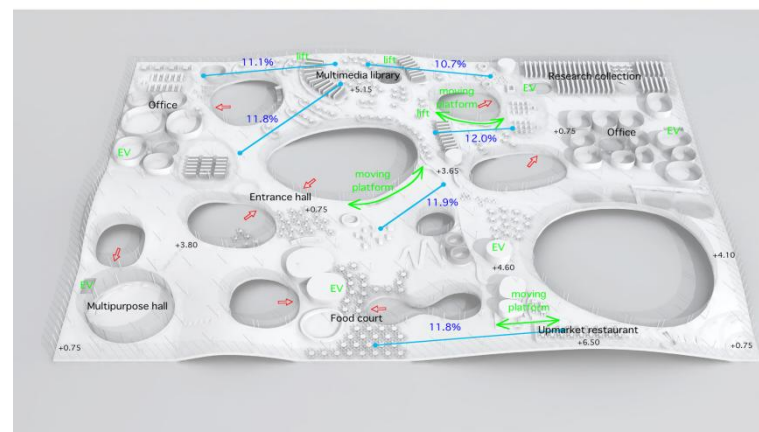
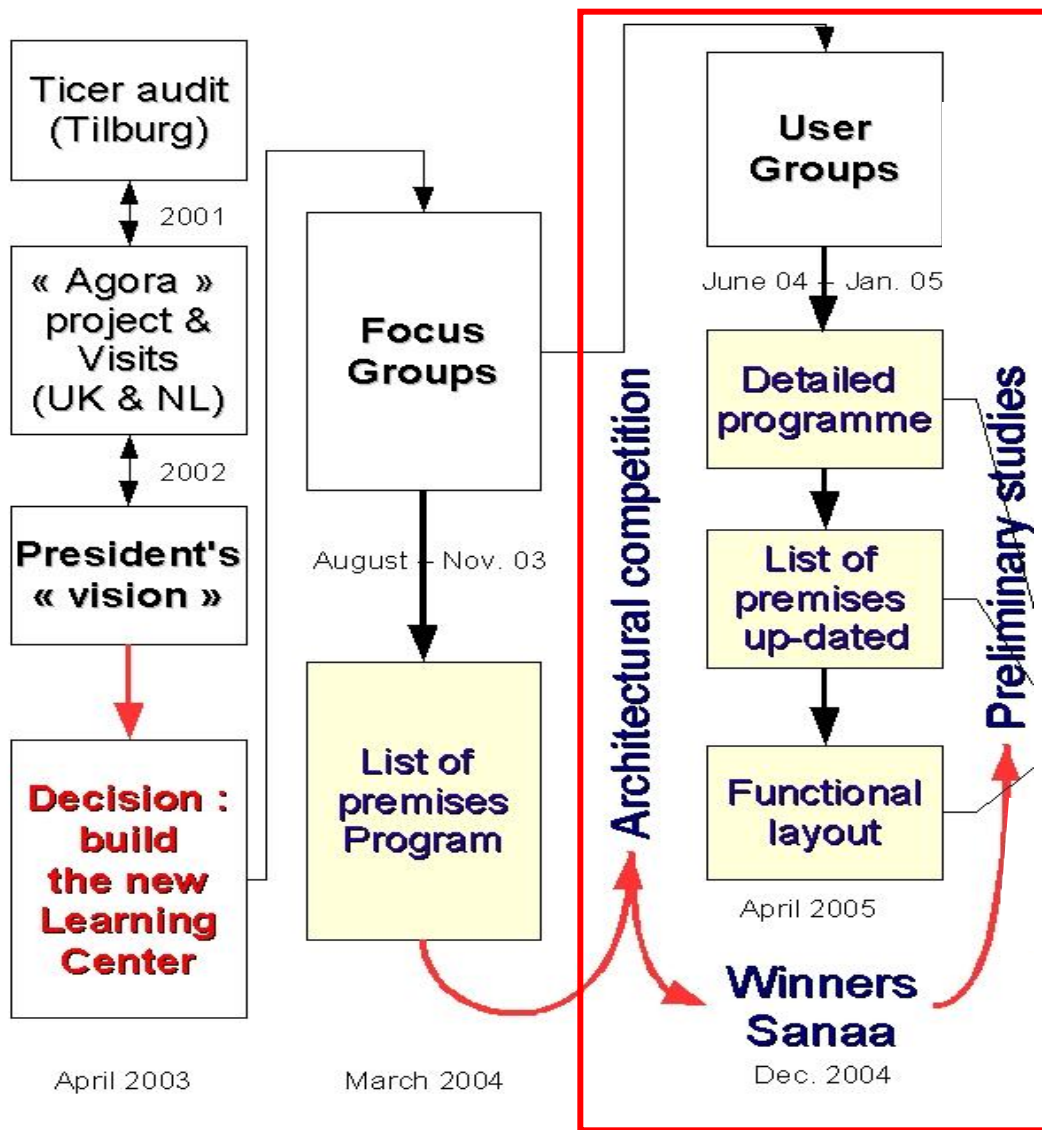
10 ans de préparatifs



Phase 2

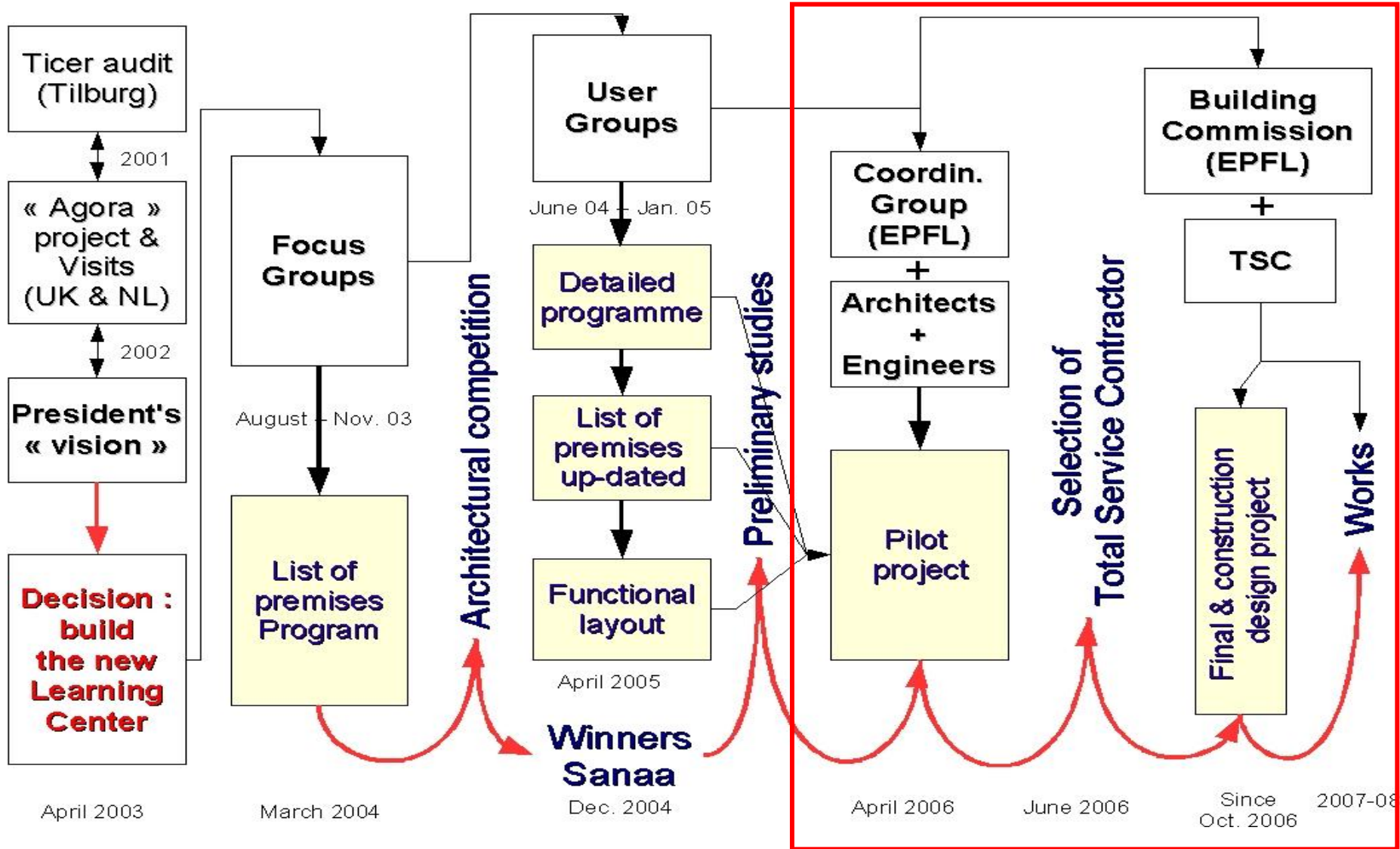


10 ans de préparatifs



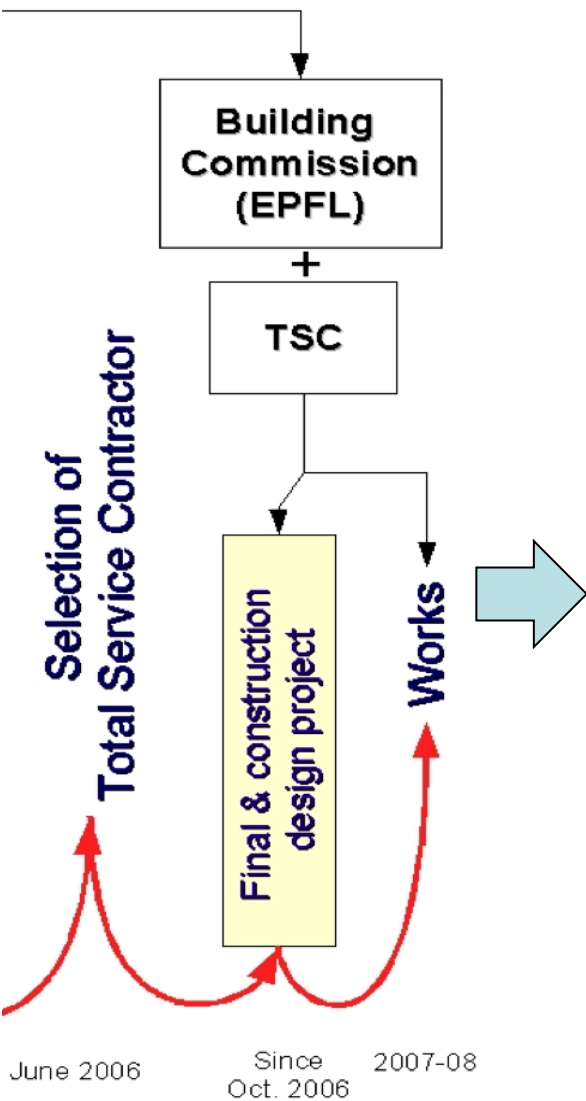
Phase 3

10 ans de préparatifs



Phase 4

10 ans de préparatifs



Permis de construire

Juillet 2007

Construction

Juil. 07 – Déc. 09

Préparation collections

Jan. 08 – Déc. 09

Équipement + mobilier

Oct. 08 – Déc. 09

Déménagement

collections + bureaux

Janvier 2010

Ouverture

22 février 2010

Inauguration officielle

27 mai 2010

Phase 5




Un financement mixte

Coût total : 80 M€

fonds publics

50%

 Schweizerische Eidgenossenschaft
Confédération suisse
Confederazione Svizzera
Confederaziun svizra


ÉCOLE POLYTECHNIQUE
FÉDÉRALE DE LAUSANNE



50%

sponsors


ROLEX

CREDIT SUISSE 


Nestlé


Logitech.

 **NOVARTIS**


SICPA


LOSINGER

+ donateurs privés
+ anciens étudiants

Un symbole architectural



architectes japonais – savoir-faire suisse – un défi de génie civil



Un lieu de vie



Ouvert 7/7, 7:00-24:00 – 3 restaurants – 1 librairie – 1 banque...



Un lieu de travail



15'000 m² – 900 places – zones silence ou calme – travail en groupe



Un lieu de travail



accès WiFi – imprimantes – scanners – copieurs – PCs en prêt ...



Une bibliothèque



Ouverte 7/7 – conseil professionnel 8:00-20:00 en semaine



Des collections



500'000 documents – 11'000 e-journals – 20'000 e-books ...



Une équipe motivée et polyvalente



43 collaborateurs (32 ETP) – 170h guichet / semaine
10'000 documents / an – 70'000 publications dans Infoscience
guichet virtuel, formations, animations ...



Une politique d'acquisition remise à jour



sélection du
contenu



sélection de
l'accès

Une politique d'acquisition remise à jour



sélection du
contenu



sélection de
l'accès

modèle
just-in-case

(accumulation
de ressources)



modèle
just-in-time

(livraison
de ressources)



Si fueris Romae ...

n'essayez plus
d'attirer les usagers
vers vos ressources



proposez vos ressources
là où ils sont
(sans qu'ils s'en rendent compte)



Si fueris Romae ...

ISI Web of KnowledgeSM

All Databases | **Select a Database** | Web of Science | Additional Resources

Search | Search History | Marked List (0)

ALL DATABASES

Results Topic=(learning center)
Timespan=All Years

Results: **3 872** Page 1 of 388 Go

Print | E-mail | Add to Marked List | Save to EndNote Web | Save to EndNote, RefMan, ProCite | more options

Refine Results

Search within results for

Search

General Categories Refine

- SCIENCE & TECHNOLOGY (2,948)
- SOCIAL SCIENCES (1,191)
- ARTS & HUMANITIES (103)

more options / values...

Subject Areas Refine

- COMPUTER SCIENCE (692)
- PSYCHOLOGY (596)
- ENGINEERING (563)
- BEHAVIORAL SCIENCES (455)
- NEUROSCIENCES & NEUROLOGY (380)

more options / values...

Document Types

Authors

Source Titles

Publication Years

1. Title: [Learning postural tasks in hemiparetic patients with lesions of left versus right hemisphere](#)
Author(s): Ioffe, ME; Chernikova, LA; Umarova, RM, et al.
Source: **EXPERIMENTAL BRAIN RESEARCH** Volume: 201 Issue: 4 Pages: 753-761 Published: 2010
Times Cited: 0
EPFL Full Text
2. Title: [Learning Curves for Colonoscopy: A Prospective Evaluation of Gastroenterology Fellows at a Single Center](#)
Author(s): Chung, JI; Kim, N; Um, MS, et al.
Source: **GUT AND LIVER** Volume: 4 Issue: 1 Pages: 31-35 Published: 2010
Times Cited: 0
EPFL
3. Title: [Carotid Artery Stenting: Single-Center Experience Over 11 Years](#)
Author(s): Nolz, R; Schernthaner, R; Cejna, M, et al.
Source: **CARDIOVASCULAR AND INTERVENTIONAL RADIOLOGY** Volume: 33 Issue: 2 Pages: 251-259 Published: 2010
Times Cited: 0
EPFL Full Text
4. Title: [Place memory formation in Drosophila is independent of proper octopamine signaling](#)
Author(s): Sitaraman, D; Zars, M; Zars, T
Source: **JOURNAL OF COMPARATIVE PHYSIOLOGY A-NEUROETHOLOGY SENSORY NEURAL AND BEHAVIORAL PHYSIOLOGY** Volume: 299-305 Published: 2010
Times Cited: 0
EPFL Full Text

Si fueris Romae ...

amazon.com Hello. Sign in to get personalized recommendations. New customer? [Start here.](#) FREE 2-Day Shipping: [See details](#)

Your Amazon.com [Today's Deals](#) [Gifts & Wish Lists](#) [Gift Cards](#) Your Account Help

Shop All Departments Search Books GO Cart Wish List

Books Advanced Search Browse Subjects New Releases Bestsellers The New York Times® Bestsellers Libros En Español Bargain Books Textbooks

Click to **LOOK INSIDE!**

Programming Firefox

Programming Firefox: Building Rich Internet Applications with XUL (Paperback)

~ Kenneth C. Feldt (Author)

Key Phrases: [test window](#), [overlay option](#), [request widget](#), [Widget Reference](#), [Done Figure](#), [Modifying Datasources](#) (more...)

★★★★☆ (6 customer reviews)

List Price: ~~\$59.99~~
Price: \$37.79 & this item ships for **FREE with Super Saver Shipping.** [Details](#)
You Save: \$22.20 (37%)

In Stock.
Ships from and sold by Amazon.com. Gift-wrap available.

Want it delivered Friday, April 9? Order it in the next 8 hours and 22 minutes, and choose **One-Day Shipping** at checkout. [Details](#)

22 new from \$12.72 **14 used** from \$2.94

Formats	Amazon Price	New from	Used from
Kindle Edition	\$36.01	--	--
Paperback	\$37.79	\$12.72	\$2.94

Share your own customer images [Search inside this book](#)

Quantity: 1

Add to Cart

or

[Sign in](#) to turn on 1-Click ordering.

or

Add to Cart with FREE Two-Day Shipping

Amazon Prime Free Trial required. Sign up when you check out. [Learn More](#)

Add to Wish List

Library holdings :
Available in 24h: [Loan it !](#)
E-book available: [Read it !](#)

Frequently Bought Together

Total List Price: \$149.93
Price For All Three: \$104.64



A tester !

<http://library.epfl.ch/tools/?pg=plugin-nebis>

Merci de votre attention



Le bâtiment est ouvert au public depuis février 2010

les visiteurs y sont les bienvenus, 7/7j :-)

Références

- IFLA Library building guidelines : developments & reflections / ed. on behalf of IFLA by Karen Latimer ... [et al.] München : Saur, 2007. - 266 p. : Ill. – ISBN 978-3-598-11768-8.
- Drivers and Directions of Academic Library Development 2005, by MICHAEL COTTA-SCHÖNBERG. European Business Schools Librarians' Group (EBSLG), Annual meeting, Paris, Avril 2005. [online], accessed 2008-11-17. <http://liber.library.uu.nl/publish/articles/000130/>
- Library as place : rethinking roles, rethinking space. Council on Library and Information resources, Washington, Février 2005. [online], accessed 2007-06-18. <http://www.clir.org/pubs/abstract/pub129abst.html>
- Transforming library service through information commons case studies for the digital age D. Russell Bailey and Barbara Gunter Tierney -- Chicago : American Library Association, 2008, ISBN 978-0-8389-0958-4
Extract: <http://www.nercomp.org/data/media/DRBailey%20IC%20toLC%20-%20Definitions.doc>
- The information commons handbook. Donald Robert Beagle ; with contributions by Donald Bailey and Barbara Tierney -- New York : Neal-Schuman Publishers, 2006, ISBN 978-1-55570-562-6
- Designing spaces for effective learning : A guide to 21st century learning space design. Higher Education Funding Council for England (HEFCE) on behalf of JISC, 2006. [online], accessed 2008-11-17. http://www.jisc.ac.uk/eli_learningspaces.html
- Perception of libraries and information resources. OCLC, Novembre 2005. [online], accessed 2008-11-17. <http://www.oclc.org/reports/2005perceptions.htm>
- OCLC's Environmental scan 2003 : Pattern recognition. OCLC, 2003. [online], accessed 2008-11-17. <http://www.oclc.org/reports/2003escan.htm>
- Learning Center : the Lausanne Exemple. David Aymonin. Presented at LIBER architecture group seminar, Utrecht, March 20-24, 2006. Available at <http://infoscience.epfl.ch/record/138474>
- The Library of the Rolex Learning Center : considered as the “best place to be” on the campus @ EPFL. David Aymonin. Presented at LIBER 2009 annual general conference, Toulouse, June 30 – July 3, 2009. Available at <http://infoscience.epfl.ch/record/139230>

Crédits photographiques

Laurent Gilléron / Keystone (SwissCube)

Alain Herzog / EPFL

Ivo Rovira / Alinghi

Blue Brain Project / EPFL

[Trevor Patt](#) @ flickr

HBO (Rome series)

Xavier Alexandre

[Thomas Guignard](#) @ flickr

[Brian Talbot](#) @ flickr

[Emilie Eagan](#) @ flickr

[Steven James](#) @ flickr

[Dano Nicholson](#) @ flickr

[Nick Wheeler](#) @ flickr