

**The Journal of Immunology**

# CD4+ and CD8+ T Cells Exhibit Differential Requirements for CCR7-Mediated Antigen Transport during Influenza Infection

This information is current as of January 6, 2010

Alex K. Heer, Nicola L. Harris, Manfred Kopf and Benjamin J. Marsland

*J. Immunol.* 2008;181:6984-6994

<http://www.jimmunol.org/cgi/content/full/181/10/6984>

## References

This article **cites 51 articles**, 34 of which can be accessed free at: <http://www.jimmunol.org/cgi/content/full/181/10/6984#BIBL>

1 online articles that cite this article can be accessed at: <http://www.jimmunol.org/cgi/content/full/181/10/6984#otherarticles>

## Subscriptions

Information about subscribing to *The Journal of Immunology* is online at <http://www.jimmunol.org/subscriptions/>

## Permissions

Submit copyright permission requests at <http://www.aai.org/ji/copyright.html>

## Email Alerts

Receive free email alerts when new articles cite this article. Sign up at <http://www.jimmunol.org/subscriptions/etoc.shtml>



# CD4<sup>+</sup> and CD8<sup>+</sup> T Cells Exhibit Differential Requirements for CCR7-Mediated Antigen Transport during Influenza Infection<sup>1</sup>

Alex K. Heer,\* Nicola L. Harris,† Manfred Kopf,<sup>2,3\*</sup> and Benjamin J. Marsland<sup>2,3\*</sup>

Upon encounter of viral Ags in an inflammatory environment, dendritic cells up-regulate costimulatory molecules and the chemokine receptor CCR7, with the latter being pivotal for their migration to the lymph node. By utilizing mice deficient in CCR7, we have examined the requirement of dendritic cell-mediated Ag transport from the lung to the draining lymph node for the induction of anti-influenza immune responses in vivo. We found that CCR7-mediated migration of dendritic cells was more crucial for CD8<sup>+</sup> T cell than CD4<sup>+</sup> T cell responses. While no specific CD8<sup>+</sup> T cell response could be detected in the airways or lymphoid tissues during the primary infection, prolonged infection in CCR7-deficient mice did result in a sustained inflammatory chemokine profile, which led to nonspecific CD8<sup>+</sup> T cell recruitment to the airways. The recruitment of influenza-specific CD4<sup>+</sup> T cells to the airways was also below levels of detection in the absence of CCR7 signaling, although a small influenza-specific CD4<sup>+</sup> T cell population was detectable in the draining lymph node, which was sufficient for the generation of class-switched anti-influenza Abs and a normal CD4<sup>+</sup> T cell memory population. Overall, our data show that CCR7-mediated active Ag transport is differentially required for CD4<sup>+</sup> and CD8<sup>+</sup> T cell expansion during influenza infection. *The Journal of Immunology*, 2008, 181: 6984–6994.

Influenza A virus infection is a major cause of morbidity and mortality worldwide. Once inhaled, the virus infects epithelial cells of the respiratory tract and begins to replicate and spread, thereby triggering innate immune mechanisms through pattern recognition receptors such as TLRs or RIG-I (retinoic acid-inducible gene I), and the production of type I IFNs (1, 2). These early innate responses are followed by the initiation of adaptive immunity, a transition that is mediated by dendritic cells (DC)<sup>4</sup> but does not require TLR signals (3, 4). Upon receiving early inflammatory or influenza-derived stimuli, DC up-regulate costimulatory surface molecules, induce cytokine expression, and migrate in a CCR7-dependent manner from the lung and airways to the draining lymph nodes (LN), where they present influenza-specific Ag to naive T cells (5–8).

The clearance of primary influenza infection is not dependent on a single arm of the adaptive immune response but rather a cooperation of CD4<sup>+</sup> T cell help, CD8<sup>+</sup> CTLs, and Ab production. For instance, mice lacking CD8<sup>+</sup> T cells show delayed viral clearance but do not succumb to infection when given a sublethal dose of virus (9). Similarly, CD4-depleted mice demonstrate only a slight delay in viral clearance (10). It is widely accepted that Abs play an important role in protecting mice from lethal type A influenza virus because mice lacking B cells rapidly succumb to infection despite mounting a strong CD8<sup>+</sup> T cell response (11, 12). The production of neutralizing Abs occurs in both a CD4<sup>+</sup> T cell-dependent and -independent fashion (13, 14), although, in the absence of CD4<sup>+</sup> T cells, Ab titers and class switching to isotypes other than IgM are greatly reduced (15, 16). Notably, bystander CD4<sup>+</sup> T cell responses can drive class switching to IgA but not to other isotypes (16).

Both initial contact with Ag and subsequent expansion of influenza-specific B and T cells occur in the lung draining LN of wild-type mice; however, whether LN are required for T cell priming, proliferation, and Ab production other than that of the IgM isotype remains controversial (17). Infection with a range of viruses in aly/aly mice, which are devoid of LN and Peyer's patches, resulted in defective activation of naive T cells and defective induction of class switching to IgG isotypes (18). In contrast, other groups reported that mice deficient in lymphotoxin- $\alpha$ , which do not develop any secondary lymphoid organs, can mount a delayed but protective T and B cell response, including class switching to IgG upon influenza infection (19). It was shown later that BALT is induced during influenza infection in the absence of functioning secondary lymphoid organs, possibly compensating for the absence of LN (20).

Although the effector mechanisms providing protection against influenza virus infection have largely been revealed, the requirement of active cell-mediated Ag transport from the lung to the draining LN remains unclear. To study the requirement of active Ag transport for the induction of adaptive immunity

\*Institute of Integrative Biology, Molecular Biomedicine, and †Institute of Integrative Biology, Environmental Biomedicine, Swiss Federal Institute of Technology, Zurich-Schlieren, Switzerland

Received for publication December 27, 2007. Accepted for publication September 15, 2008.

The costs of publication of this article were defrayed in part by the payment of page charges. This article must therefore be hereby marked *advertisement* in accordance with 18 U.S.C. Section 1734 solely to indicate this fact.

<sup>1</sup> This work was supported by Grant 3100A0-100233/1 from the Swiss National Science Foundation. B.J.M. is supported by a scholarship from the Holcim Foundation, Switzerland.

A.K.H. performed experiments, and A.K.H., N.H., M.K., and B.J.M. designed experiments, analyzed data, and wrote the manuscript.

<sup>2</sup> M.K. and B.J.M. contributed equally to this work.

<sup>3</sup> Address correspondence and reprint requests to Dr. Ben J. Marsland and Dr. Manfred Kopf, Molecular Biomedicine, Swiss Federal Institute of Technology, Wägistrasse 27, CH8952 Zurich-Schlieren, Switzerland. E-mail addresses: marsland@env.ethz.ch and Kopf@ethz.ch

<sup>4</sup> Abbreviations used in this paper: DC, dendritic cell; BAL, bronchoalveolar lavage; BMDC, bone marrow-derived DC; LN, lymph node; p.i., postinfection; WT, wild type.

against influenza virus, we used mice lacking the chemokine receptor CCR7, a receptor known to be pivotal for cell-mediated Ag transport to the lung draining LN (21). We show that, in the absence of CCR7-mediated migration, the priming and the expansion of influenza-specific CD8<sup>+</sup> T cells were below limits of detection, although prolonged inflammation driven by sustained chemokine production in the lung recruited a substantial population of nonspecific memory CD8<sup>+</sup> T cells. We further show that CD4<sup>+</sup> T cell priming and effector functions are greatly reduced. Surprisingly, however, this minimal expansion of CD4<sup>+</sup> T cells was sufficient to induce a virus-specific Ab response (albeit delayed). We conclude that CD4<sup>+</sup> and CD8<sup>+</sup> T cell expansion has differential requirements for CCR7-mediated Ag transport and that the development of influenza-specific Ab responses requires only a fraction of the normal specific CD4<sup>+</sup> T cell effector population.

## Materials and Methods

### Animals, virus, and infection

CCR7-deficient mice (used with permission from Martin Lipp) were backcrossed at least seven times onto a C57BL/6 background and maintained in specific pathogen-free conditions (BioSupport). C57BL/6 control mice were purchased from Charles River Laboratories. To generate wild-type (WT)/RAG and CCR7/RAG chimeric mice, C57BL/6 mice were irradiated with 950 rad 1 day before being reconstituted with  $1.25 \times 10^6$  bone marrow cells derived from either C57BL/6 or CCR7-deficient mice and  $3.75 \times 10^6$  bone marrow cells from RAG-deficient mice. Reconstituted mice were maintained in specific pathogen-free conditions for at least 8 wk before experiments. Influenza virus strain PR8 (A/Puerto Rico/34, H1N1) was originally provided by J. Pavlovic (University of Zurich). Influenza virus strain X31 (A/68, H3N2) was originally provided by Thorsten Wolff (Robert Koch Institute, Berlin). At the age of 6–12 wk, mice were infected intranasally with 50 PFU influenza virus. The mice were briefly anesthetized and inoculated twice with 50  $\mu$ l virus in endotoxin-free PBS intranasally. For systemic influenza inoculation, mice were given  $2 \times 10^5$  PFU i.v. All animal experimental procedures were approved by the local animal ethics committee (Zurich).

### Bronchoalveolar lavage (BAL)

Mice were sacrificed at time points indicated after infection and were restrained on the back. A small incision on the trachea was performed, through which a catheter was introduced. The lungs were flushed with 1 ml PBS. BAL cells were harvested by centrifugation. Total cell numbers per BAL were determined by Coulter Counter (IG Instrumenten Gesellschaft), and cells were processed for further analysis. BAL fluid was used to measure virus-specific IgA levels.

### Determination of virus-specific CD8<sup>+</sup> T cells

BAL, LN, or splenic cells ( $1 \times 10^5$ ) were incubated with 10  $\mu$ g/ml NP34<sup>+</sup> PE-conjugated tetramers for 40 min at 4°C. CD4-FITC and CD8-allophycocyanin (eBioscience) were subsequently added for 20 min at 4°C. Cells were washed and analyzed by flow cytometry (FACSCalibur; BD Biosciences).

### Specific restimulation of BAL cells

The day before mice were sacrificed for analysis,  $1.5 \times 10^5$  bone marrow-derived DC (BMDC) (22) were incubated overnight with  $1.6 \times 10^5$  PFU UV-inactivated virus (PR8) in 96-well plates. Twelve hours later, these BMDC were pulsed with 1  $\mu$ g/ml NP34 peptide for 2 h before BAL cells from individual mice were added. After 2 h of incubation at 37°C, monensin (2  $\mu$ M, Sigma-Aldrich) was added to retain cytokines in the cytoplasm, and cells were again incubated at 37°C for another 3 h. Cells were harvested, stained with FITC-labeled TNF- $\alpha$  (eBioscience), PE-labeled CD4 (BD Biosciences), biotin-labeled CD8 (eBioscience), and allophycocyanin-labeled IFN- $\gamma$  (eBioscience), as previously described, (4) and analyzed by flow cytometry (FACSCalibur).

### Proliferation of precursor CD4<sup>+</sup> and CD8<sup>+</sup> T cells

Mediastinal LN cells from infected individual mice were incubated with UV-inactivated virus (PR8) in IMDM-10% FCS for 48 h at 37°C with

[<sup>3</sup>H]thymidine added (1  $\mu$ Ci) for the last 12 h. Total [<sup>3</sup>H]thymidine incorporation was measured with a scintillation reader as an indicator of cell proliferation, as previously described (23).

### Histology

Mediastinal LN were carefully removed, put into OCT freezing medium, and snap-frozen. Standard histological techniques were applied. Staining was performed with peanut lectin (agglutinin)-biotin (eBioscience) before streptavidin-AP was added. Sections were developed with a fast blue AP substrate kit (Vector Laboratories) for 10 min before being washed once with TBS and mounted with Immu-Mount (Vector Laboratories). All slides were viewed with a Zeiss Axioplan 2 microscope. Images were taken with a Retiga EXi (QImaging) digital camera and analyzed with the software Openlab (Improvision).

### Detection of virus-specific Abs

At the indicated time points, sera or BAL fluid was measured for virus-specific IgA and IgG Ab isotype levels. Ninety-six-well plates (Maxisorp; Nunc) were coated with UV-inactivated influenza virus (PR8) in PBS overnight at 4°C. Plates were washed and incubated with PBS-1% BSA for 2 h at room temperature for blocking. Sera and BAL fluids from individual mice were serially diluted in PBS-0.1% BSA starting with a 1/2 dilution for BAL fluids and a 1/50 dilution for sera, followed by incubation at room temperature for 2 h. Plates were washed five times and incubated with alkaline phosphatase-conjugated goat anti-mouse Abs to IgG1, IgG2c, or IgA (SouthernBiotech) at a 1/1000 dilution in PBS-0.1% BSA at room temperature for 2 h. Thereafter, plates were washed five times and substrate p-nitrophenyl phosphate (Sigma-Aldrich) was added. Optical densities were measured on an ELISA reader (Bucher Biotec) at 405 nm.

### Assessment of mRNA expression

Lungs were taken at the time points indicated after mice were infected with 50 PFU PR8 influenza. RNA was prepared with TRI Reagent (Molecular Research Center) and then treated with DNase (Invitrogen) to avoid genomic DNA contamination before RNA was converted to cDNA by reverse transcription using SuperScript III (Invitrogen). cDNA was quantified by real-time PCR (iCycler; Bio-Rad) using SYBR Green (Stratagene) and samples were normalized with GAPDH expression levels. Primers sequences (forward and reverse, respectively) used were: GAPDH, 5'-GGG TGTGAACCACGAGAAAT-3' and 5'-CCTTCCACAATGCCAAAGTT-3'; CCL2, 5'-AGGTCCTGTCATGCTTCTG-3' and 5'-ATTGGGATC ATCTTGCTGGT-3'; CCL3, 5'-AGATTCCACGCCAATTCATC-3' and 5'-CCCAGGTCTCTTTGGAGTCA-3'; CCL4, 5'-TTCTGTGCTCCAGG GTTCTC-3' and 5'-AGCAAAGACTGCTGGTCTCA-3'; CCL5, 5'-CGC ACCTGCCTCACCATA-3' and 5'-CTGCAAGATTGGAGCACTTG-3'; CXCL9, 5'-TTTTCTCTTGGGCATC-3' and TGAGGGATTGT AGTGATCG-3'; CXCL10, 5'-AAGTGCTGCCGTCATTTTCT-3' and CCTATGGCCCTCATTCTCAC-3'; CXCL11, 5'-GGATGAAAGCCGT CAAAATG-3' and 5'-CCAGGCACCTTTGTCGTTTA-3'; CXCL13, influenza PR8 M protein, 5'-GGACTGCAGCGTAGACGCTT-3' and 5'-CATCCTGTATATGAGGCCCAT-3' as previously described (24).

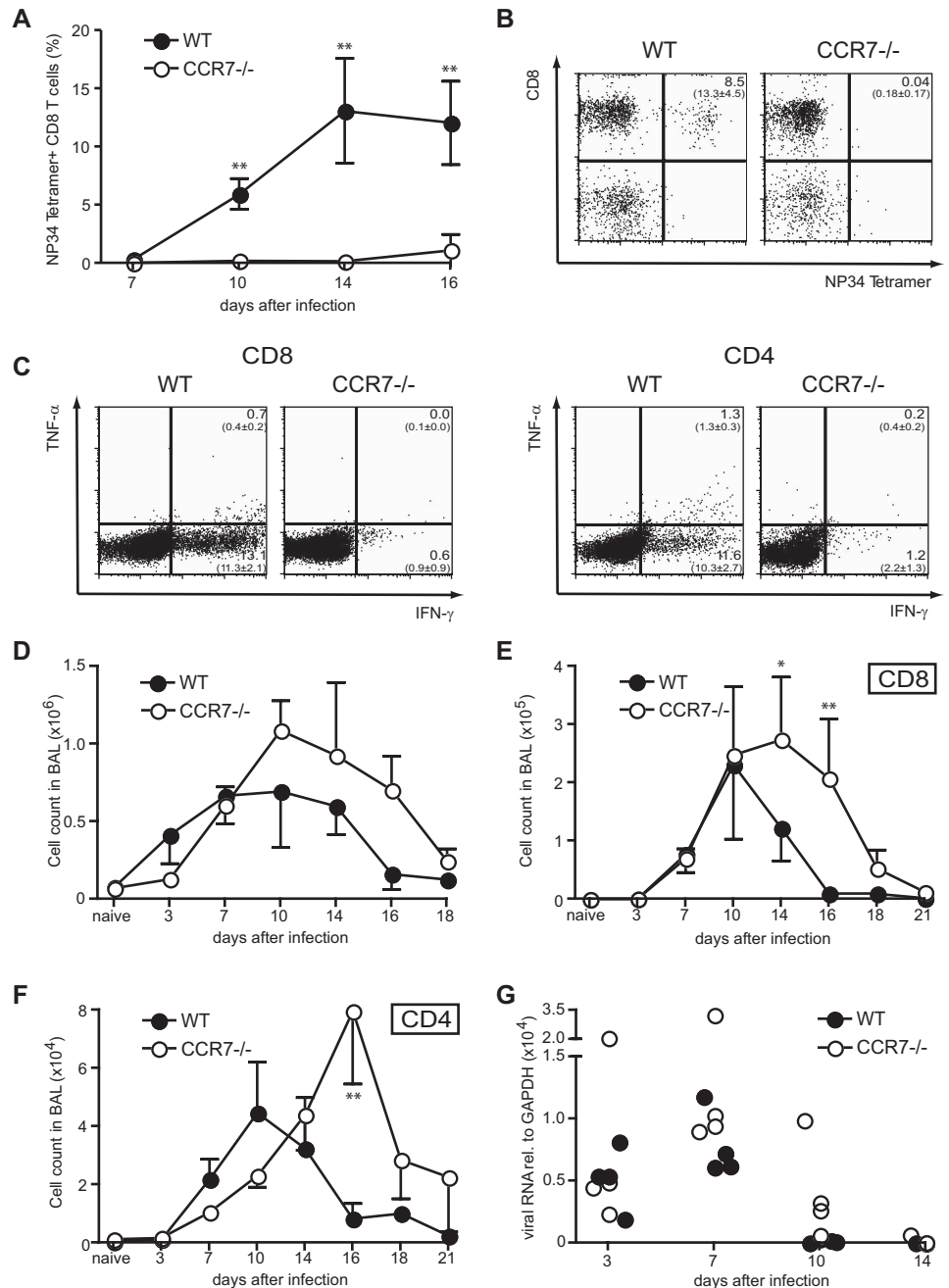
### Statistical analysis

Student's *t* test was used to assess the statistical significance between groups. Significance is depicted as \*, *p* < 0.05 and \*\*, *p* < 0.01.

## Results

### Virus-specific CD4<sup>+</sup> and CD8<sup>+</sup> T cells cannot be detected in the airways of CCR7-deficient mice during primary influenza infection

It is generally considered that antiviral immune responses develop in the draining LN following active transport of Ag from the site of infection (18, 21). However, it has been reported that in the absence of Ag transport to the LN or when LN structure is disrupted, priming and expansion of T cells can occur in peripheral tissue (20, 25). We sought to determine whether active transport of Ag was required for the generation of a specific T cell response against influenza virus infection. Accordingly, we utilized CCR7-deficient mice where CCR7-mediated DC migration to the LN is absent. Wild-type and CCR7-deficient mice were inoculated intranasally with 50 PFU of influenza virus, and the cellular infiltrate in the airways was analyzed at multiple time points after infection.



**FIGURE 1.** Virus-specific T cells are absent in the airways of CCR7-deficient mice but nonspecific cells are nevertheless recruited. CCR7-deficient and C57BL/6 mice were intranasally infected with 50 PFU PR8 influenza virus on day 0, and sacrificed at the time points indicated for analysis. Lung-infiltrating cells were collected by BAL. *A*, Kinetics of the proportion of NP34-tetramer<sup>+</sup> cells, gated on CD8<sup>+</sup> T cells. *B*, Proportion of NP34<sup>+</sup>CD8<sup>+</sup> T cells at day 14 p.i., gated on lymphocytes. Quadrant proportion, mean, and SD (in brackets) are gated on NP34<sup>+</sup>CD8<sup>+</sup> cells. *C*, BAL cells were restimulated in vitro by APCs for 5 h before fixation, staining, and analysis by flow cytometry. *D*, Kinetics of total cell counts of cellular infiltrate into the airways. *E* and *F*, Kinetics of total CD4<sup>+</sup> and CD8<sup>+</sup> T cells of cellular infiltrate into the airways assessed by flow cytometry. *G*, Lungs of infected mice were removed at the time points indicated. Viral transcripts were assessed by quantitative real-time PCR. Data are expressed relative to GAPDH expression. Data are representative of at least three independent experiments with three to seven mice per group.

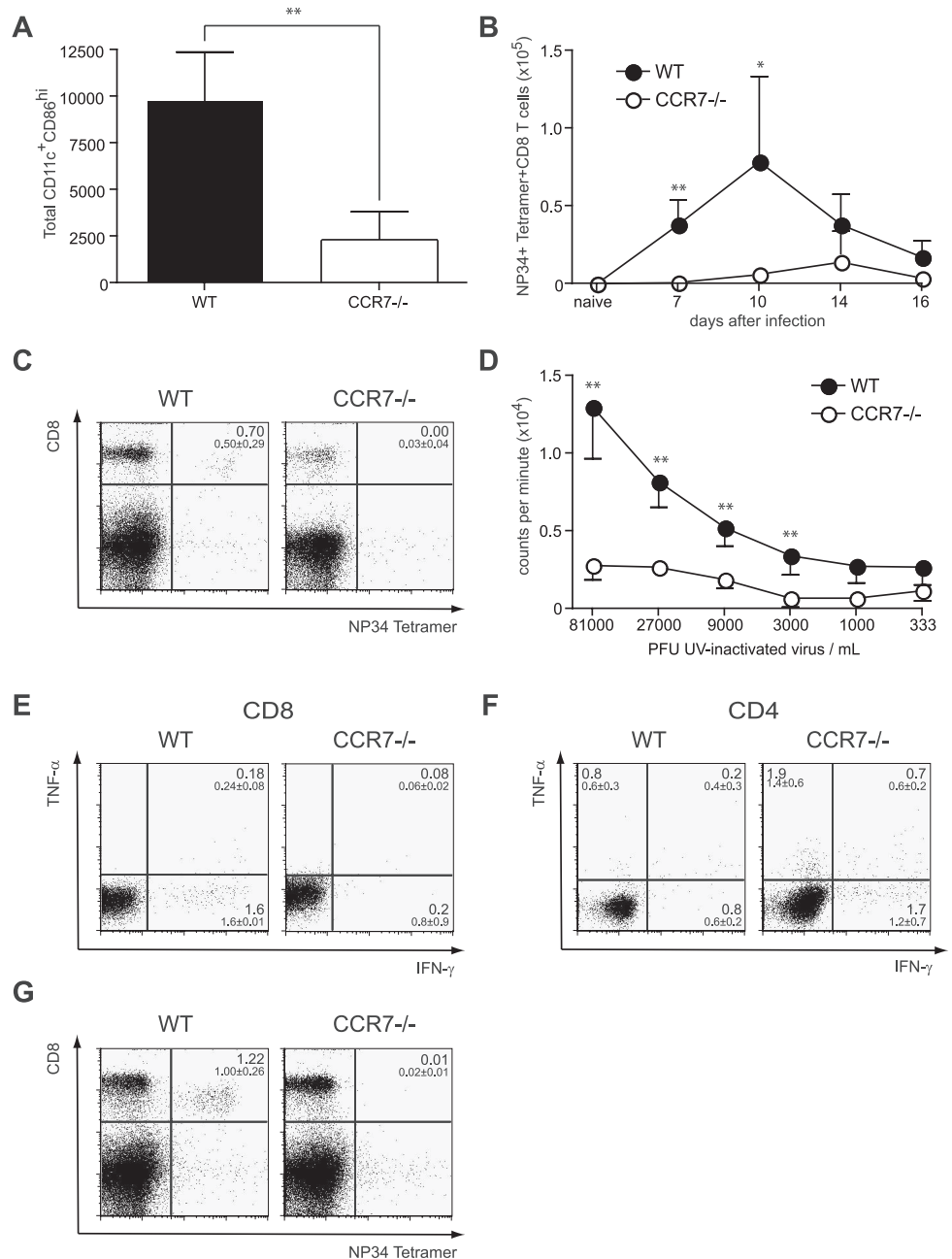
Influenza-specific CD8<sup>+</sup> T cells could readily be detected in wild-type mice after day 8 postinfection (p.i.). In contrast, a specific CD8<sup>+</sup> T cell response in the airways of mice devoid of CCR7 was below the limits of detection at all points examined (Fig. 1, *A* and *B*, and data not shown). We then assessed the capacity of cells from the airway infiltrate to produce the inflammatory cytokines IFN- $\gamma$  and TNF- $\alpha$  after in vitro restimulation with influenza virus-presenting DC as an indicator of T cell effector function. In accordance with the lack of virus-specific T cells, we found that CD8<sup>+</sup> and CD4<sup>+</sup> T cells from CCR7-deficient mice produced baseline levels of IFN- $\gamma$  and TNF- $\alpha$  upon restimulation, while clear cytokine production by T cells from the wild-type group was observed (Fig. 1*C*). Despite the absence of influenza-specific T cells, the total cell recruitment to the lung was larger in the CCR7-deficient mice as compared with wild-type mice (Fig. 1*D*), and both CD4<sup>+</sup> and CD8<sup>+</sup> T cell populations were recruited to the lung for a prolonged period (Fig. 1, *E* and *F*). Notably, even in the

presence of this robust inflammatory infiltrate there was a delay in the clearance of the virus (Fig. 1*G*). Taken together, these data suggest that the generation of influenza-specific T cells requires CCR7-mediated Ag transport and is not compensated for locally in the lung.

*CCR7-dependent cell-mediated Ag transport from the airways to the draining LN is essential for priming and expansion of specific T cells during influenza infection*

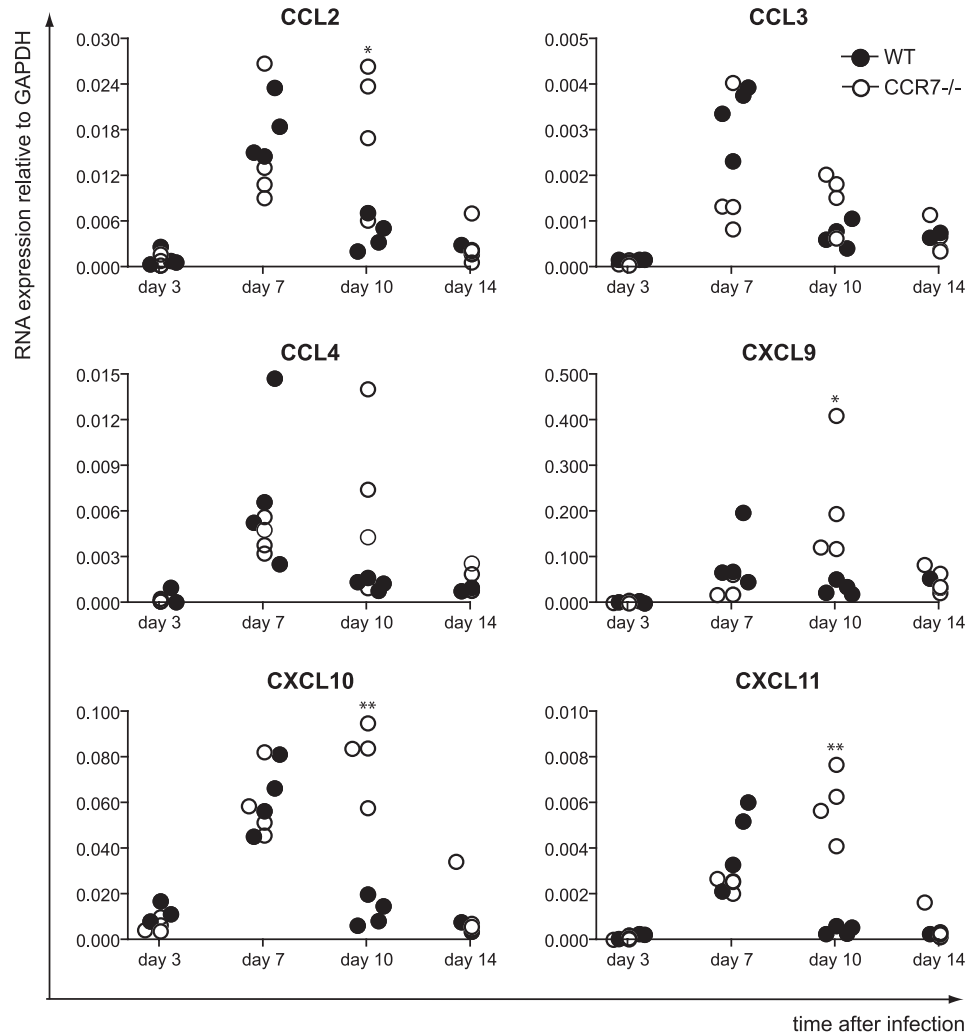
To ascertain whether the absence of specific T cells in the airways of influenza-infected CCR7-deficient mice reflected a defect in priming and expansion of specific T cells in the draining LN, we infected wild-type and CCR7-deficient mice with 50 PFU of PR8 influenza virus and analyzed the specific T cell response in the draining LN at multiple time points after infection. We first determined the number of DC that had migrated from the airways to the LN 3 days after infection by quantifying the number of

**FIGURE 2.** Active Ag transport is requisite for triggering anti-influenza T cell responses in draining LN. CCR7-deficient and C57BL/6 mice were intranasally infected with 50 PFU PR8 influenza virus on day 0, and sacrificed at the time points indicated to obtain lung draining LN cells for analysis. *A*, Total number of migratory CD11c<sup>+</sup>CD86<sup>hi</sup> DC in the LN at day 3 p.i. *B*, Kinetics of total cell number of NP34-tetramer<sup>+</sup>-specific T cells. *C*, Proportion of LN NP34<sup>+</sup>CD8<sup>+</sup> T cells at day 10 p.i., gated on live cells. Quadrant proportion, mean, and SD (in brackets) are gated on CD8<sup>+</sup> cells. *D*, Total LN cells were cultured in the presence of UV-inactivated virus for 48 h. [<sup>3</sup>H]thymidine incorporation over the last 12 h of culture was measured as an indicator of cell proliferation. *E* and *F*, LN CD8<sup>+</sup> and CD4<sup>+</sup> T cells were restimulated in vitro by APCs for 5 h before fixation, staining, and analysis by flow cytometry. *G*, Proportion of splenic NP34<sup>+</sup>CD8<sup>+</sup> T cells at day 10 p.i., gated on live cells. Quadrant proportion, mean, and SD (in brackets) are gated on CD8<sup>+</sup> cells. Data are representative of at least two independent experiments with three to seven mice per group.



CD11c<sup>+</sup>CD86<sup>high</sup> migratory DC in the draining LN. As expected, the number of migrated DC was significantly ( $p < 0.01$ ) reduced in CCR7-deficient mice (Fig. 2A) (21). In line with these data, total cell recruitment to the lung draining LN was greatly reduced in CCR7-deficient mice as compared with C57BL/6 mice at all time points examined (data not shown). We next determined whether NP34-specific CD8<sup>+</sup> T cells could be detected in the LN and found that they were below the limits of detection in CCR7-deficient mice until 14 days p.i. when a small population was transiently above background (Fig. 2, B and C). To determine whether the absence of specific T cells was limited to the CD8<sup>+</sup> fraction or also to CD4<sup>+</sup> T cells, we next assessed the capacity of LN cells to proliferate ex vivo 7 days p.i. (the peak of CD4<sup>+</sup> T cell expansion in wild-type mice) when incubated with UV-inactivated virus. The proliferation of LN cells was greatly reduced in CCR7-deficient mice as compared with the wild-type control group, suggesting that few influenza-specific T cells were present in LN of CCR7-deficient mice at day 7 p.i. (Fig. 2D). We also restimulated LN

cells with influenza virus-loaded DC at day 10 p.i. and measured cytokine production. In support of the NP34-tetramer analysis (Fig. 2B), we could not detect any IFN- $\gamma$  or TNF- $\alpha$  expression by CD8<sup>+</sup> T cells from CCR7-deficient mice at day 10 p.i. (Fig. 2E). However, CD4<sup>+</sup> T cell cytokine production was above background in LN from CCR7-deficient mice, suggesting that a small pool of virus-specific CD4<sup>+</sup> T cells was generated in the draining LN of CCR7-deficient mice during the course of the infection (Fig. 2F). To rule out whether the priming and the expansion of specific CD8<sup>+</sup> T cells occurs elsewhere, specifically in the spleen of CCR7-deficient mice, we analyzed the frequency of NP34-specific CD8<sup>+</sup> T cells in splenocytes by flow cytometry. Again, we could not detect any specific CD8<sup>+</sup> T cells in the spleens of CCR7-deficient mice (Fig. 2G). In contrast, a virus-specific CD8<sup>+</sup> T cell population was prominent in the spleens of wild-type mice as previously reported (Fig. 2G) (26). Overall, these data imply that CCR7-mediated Ag transport from the lung is required for the generation of specific CD8<sup>+</sup> T cells in draining LN and the spleen,



**FIGURE 3.** Proinflammatory chemokines provide the environment for prolonged recruitment of nonspecific T cells in CCR7-deficient mice. CCR7-deficient and C57BL/6 mice were intranasally infected with 50 PFU PR8 influenza virus on day 0, and sacrificed at the time points indicated for analysis. Lungs of infected mice were removed and mRNA levels were assessed by quantitative real-time PCR. Data are expressed relative to GAPDH expression. Data are representative of two independent experiments with three to four mice per group.

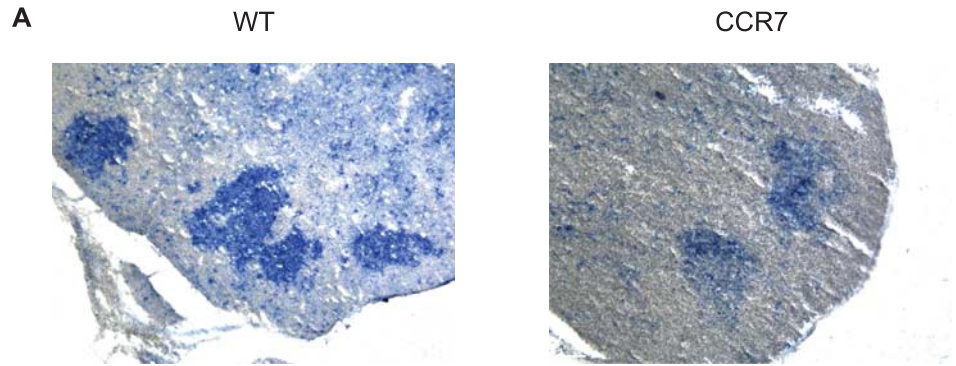
while the generation of influenza-specific CD4<sup>+</sup> T cells appears less dependent on CCR7 signaling.

*The recruitment of nonspecific T cells to the airways is promoted upon prolonged chemokine expression in the lung*

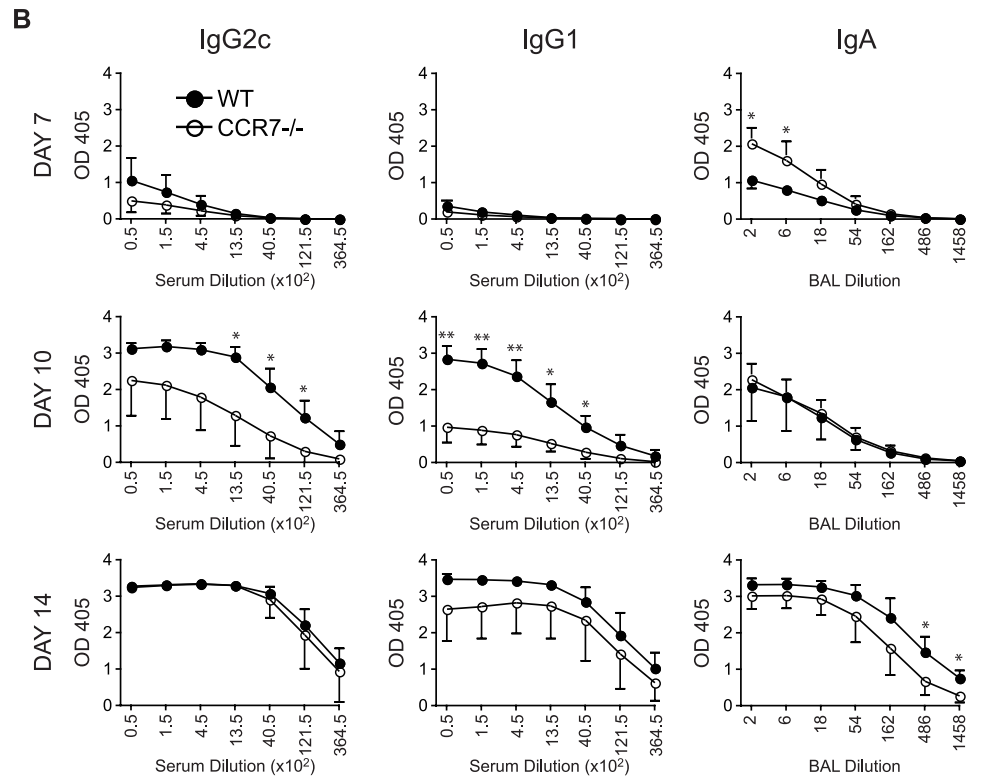
To determine why CCR7-deficient mice display considerable nonspecific cell recruitment to the lungs upon influenza infection, we assessed the levels of several chemokines that are important in T cell attraction under inflammatory conditions by quantitative real-time PCR. CCL2 (MCP-1) was reported to attract macrophages, monocytes, and T cells while CCL3 (MIP-1 $\alpha$ ) and CCL4 (MIP-1 $\beta$ ) are involved in neutrophil chemotaxis, Th1 differentiation, and recruitment of polarized T cells (27–29). CCL2, CCL3, and CCL4 were expressed in the lungs of infected CCR7-deficient mice at comparable levels to wild-type mice on day 7 p.i. Notably, however, the expression of these chemokines was prolonged in CCR7-deficient mice (Fig. 3). We next assessed whether the chemokines CXCL9 (MIG), CXCL10 (IP-10), and CXCL11 (I-TAC), which are associated with memory T cell recruitment, were contributing to the prolonged influx of bystander T cells to the airways of CCR7-deficient mice (30). All three chemokines were significantly ( $p < 0.05$ ) up-regulated in CCR7-deficient mice as compared with wild-type mice on day 10 after infection (Fig. 3). Overall, the prolonged peak of chemokines attracting polarized and memory T cells in CCR7-deficient mice accounts, at least in part, for the increased recruitment of proinflammatory nonspecific T cells during influenza infection.

*CCR7-deficient mice develop an influenza-specific IgA and IgG Ab isotype response*

A small pool of influenza-specific CD4<sup>+</sup> T cells was detectable in the draining LN in the absence of CCR7 (Fig. 2F); however, no influenza-specific CD4 T cells could be detected in the airways of CCR7-deficient mice during primary influenza infection. Since specific CD4<sup>+</sup> T cell help is critical for the formation of germinal centers and the induction of IgG Ab class switching during influenza infection, we next assessed the capability of CCR7-deficient mice to form germinal centers and to generate influenza-specific class-switched Abs. We infected mice with influenza virus and obtained mediastinal LN for histology, and BAL and serum for analysis of influenza-specific Ab isotypes at multiple time points. Histology sections of mediastinal LN at day 10 p.i. showed clear formation of germinal centers in both CCR7-deficient and wild-type mice (Fig. 4A). Analysis of sera and BAL fluid revealed that IgG2c could be detected 7 days p.i. in wild-type mice (Fig. 4B). Further analysis of sera from day 10 after infection revealed that class switching to IgG1 and IgG2c was substantially reduced in knockout mice as compared with the wild-type control group (Fig. 4B), which is in accordance with the defect in the generation of influenza-specific CD4<sup>+</sup> T cells. Surprisingly, however, at day 14 p.i., we found that there was no longer a significant difference in the levels of virus-specific IgG isotypes (Fig. 4B), suggesting that a small pool of specific CD4<sup>+</sup> T cells is sufficient to induce class switching. Influenza-specific IgA isotype levels in BAL fluid



**FIGURE 4.** Virus-specific B cells from CCR7-deficient mice undergo class switching to IgG and IgA Ab isotypes in germinal centers. CCR7-deficient and C57BL/6 mice were intranasally infected with 50 PFU PR8 influenza virus. Mice were sacrificed or bled at the indicated time points after infection. *A*, Histological sections of mediastinal LN showing PNA<sup>+</sup> areas in dark blue. *B*, IgA from BAL fluid or serum IgG2c and IgG1 Ab isotypes at the indicated time points. Data are representative of two independent experiments with three to seven mice per group.

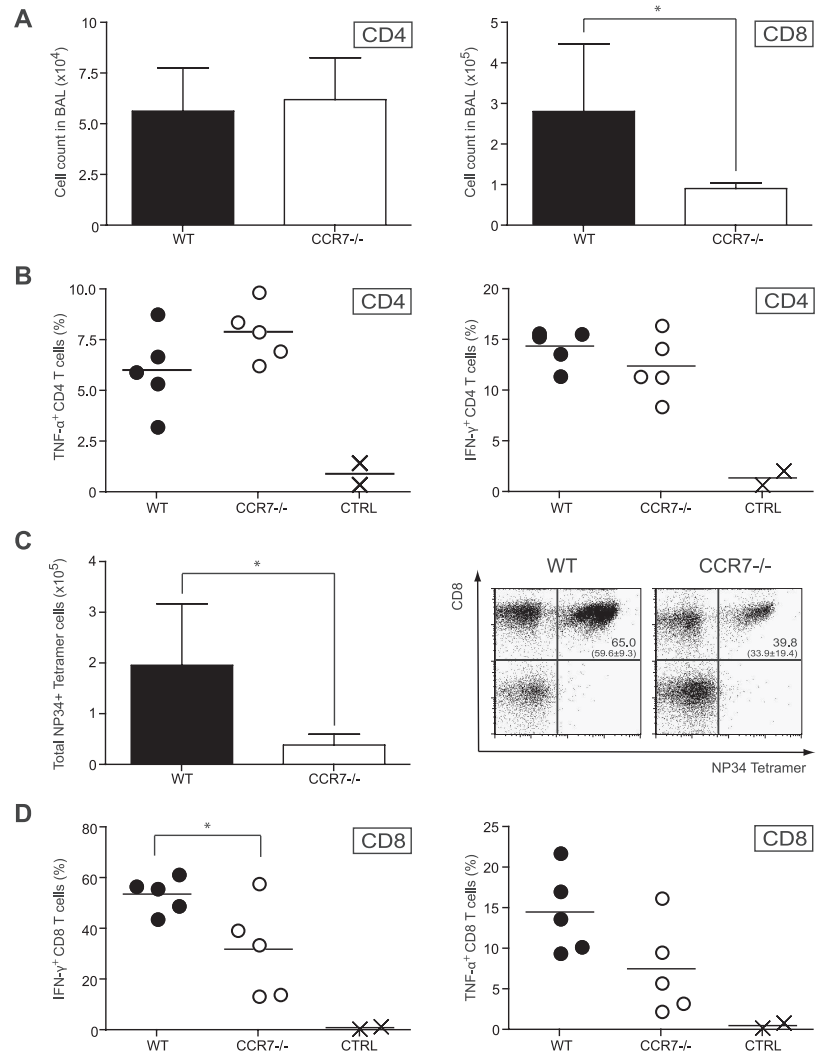


of CCR7-deficient mice were substantially elevated as compared with wild-type mice at day 7 p.i. (Fig. 4B). At day 10 p.i., no difference could be observed in IgA isotype levels between wild-type and CCR7-deficient mice (Fig. 4B). This is in line with prior data, showing that class switching to IgA is not dependent on influenza-specific CD4<sup>+</sup> T cell help (16). Taken together, these data show that isotype class switching to IgA is not impaired in CCR7-deficient mice and does not depend on cognate T-B interaction, while germinal center formation and class switching to IgG isotypes are delayed but functional in the absence of CCR7.

*CCR7 signaling is not required for the generation of an influenza-specific CD4<sup>+</sup> T cell memory population*

To clarify the differential requirement of CCR7-dependent migration for activation of naive T cells and the generation of an influenza-specific memory T cell population in CCR7-deficient mice, we assessed the development of anti-influenza T cell recall responses in vivo. T cell recall responses in vivo can be addressed by infecting mice with PR8 influenza A virus followed by infection with the serologically distinct X31 influenza virus (31). Accordingly, mice were inoculated intranasally with 50 PFU of PR8 influenza virus (H1N1). Thirty days later, mice were given X31 in-

fluenza virus (H3N2) intranasally and sacrificed 7 days after the secondary infection. Analysis of the in vivo recall response revealed that the total number of CD4<sup>+</sup> T cells was similar in CCR7-deficient mice while the total number of CD8<sup>+</sup> T cells was significantly reduced when compared with wild-type mice (Fig. 5A). To determine whether those CD4<sup>+</sup> T cells were specific for influenza virus, we restimulated the cells together with influenza virus-bearing DC. In contrast to the primary T cells response, where specific CD4<sup>+</sup> T cells were below the limits of detection in the airways of CCR7-deficient mice (Fig. 1C), we found that CD4<sup>+</sup> T cells recruited to the lung during secondary infection produced similar levels of the proinflammatory cytokines TNF- $\alpha$  and IFN- $\gamma$  as compared with wild-type mice. These data suggest that the few specific CD4<sup>+</sup> T cells that are generated in the draining LN during the primary response were sufficient to sustain a normal recall response (Fig. 5B). We further analyzed the recall response of influenza-specific CD8<sup>+</sup> T cells. Contrary to the primary response, where specific CD8<sup>+</sup> T cells were below the limits of detection, we found that influenza-specific CD8<sup>+</sup> T cells were present in the airways upon secondary infection of CCR7-deficient mice, albeit at significantly reduced total numbers (Fig. 5C). These CD8<sup>+</sup> T cells were capable of



**FIGURE 5.** CCR7 signaling is not required for the generation of T cell recall responses despite a defective T cell response in primary infections. CCR7-deficient and C57BL/6 mice were intranasally inoculated with 50 PFU PR8 influenza virus. Thirty days later, mice were infected with the serologically distinct X31 influenza virus, and mice were sacrificed 7 days after the second infection. Lung-infiltrating cells were collected by BAL. *A*, Total cell count of infiltrated CD4<sup>+</sup> and CD8<sup>+</sup> T cells. *B*, BAL CD4<sup>+</sup> T cells were restimulated in vitro by APCs for 5 h before fixation, staining, and analysis by flow cytometry. *C*, Total NP34<sup>+</sup> T cells, gated on live cells, and proportion of NP34<sup>+</sup>CD8<sup>+</sup> T cells, gated on lymphocytes, at day 7 after secondary infection. Quadrant proportion, mean, and SD (in brackets) are gated on CD8<sup>+</sup> cells. *D*, BAL CD8<sup>+</sup> T cells were restimulated in vitro by APCs for 5 h before fixation, staining, and analysis by flow cytometry.

producing TNF- $\alpha$  and IFN- $\gamma$  upon specific restimulation (Fig. 5D). Taken together, these data imply that a small specific CD4<sup>+</sup> T cell population was generated in the primary response in the absence of CCR7-mediated active Ag transport, that this specific CD4<sup>+</sup> T cell population was sufficient to result in normal recall expansion upon secondary challenge, and that a population of influenza-specific CD8<sup>+</sup> (below the limits of detection) was generated during the primary response but was not sufficient to form a normal pool of memory cells.

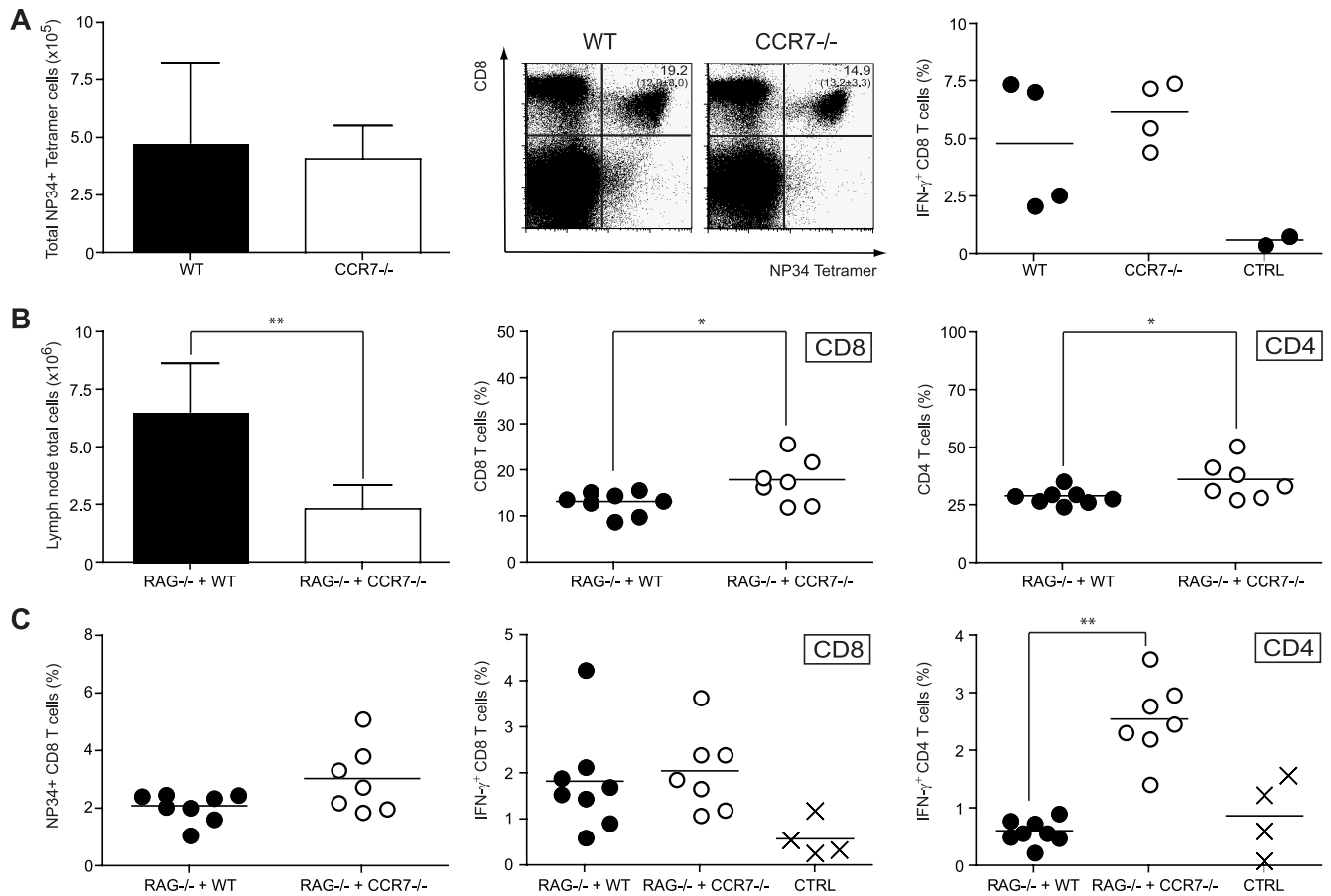
*CCR7-mediated T cell entry and localization in the secondary lymphoid organs is not a critical determinant of T cell priming during influenza infection*

CCR7 expression is not only critical for the migration of DC from the periphery into draining LN, but also naive T cells substantially depend on CCR7 signaling to enter secondary lymphoid organs and to localize appropriately within them (7, 32). To address whether CCR7-deficient CD8<sup>+</sup> T cells have an intrinsic defect in their activation, we inoculated mice with  $2 \times 10^5$  PFU PR8 influenza virus via the tail vein to cause systemic distribution of the virus. C57BL/6 and CCR7-deficient mice were sacrificed 10 days p.i. for analysis. We found that the expansion of specific CD8<sup>+</sup> T cells in the spleen upon systemic exposure to influenza virus was comparable between the two groups (Fig. 6A). Additionally, when splenic CD8<sup>+</sup> T cells were restimulated with peptide and influenza virus, the resulting production of IFN- $\gamma$  was similar in C57BL/6

and CCR7-deficient mice (Fig. 6A), indicating that CCR7 expression on CD8<sup>+</sup> T cells is not required for their expansion or effector function.

To further test our findings that CCR7-dependent Ag transport by DC was required for the generation of virus-specific CD8<sup>+</sup> but not CD4<sup>+</sup> T cells, we generated chimeric mice, which were reconstituted with three parts of bone marrow from RAG-deficient mice (no T and B cells) and one part of bone-marrow from either C57BL/6 or CCR7-deficient mice. The resulting mixed bone marrow chimeric mice have competent CCR7-dependent Ag transport by DC together with C57BL/6 lymphocytes or lymphocytes deficient in CCR7. The chimeric mice were infected with 50 PFU PR8 influenza virus and analyzed 12 days p.i. Analysis of the mediastinal LN revealed that the total cell recruitment was significantly ( $p < 0.01$ ) reduced in mice reconstituted with RAG/CCR7-deficient bone marrow as compared with mice reconstituted with RAG/WT bone marrow (Fig. 6B). This result is in line with previous reports, which indicate that CCR7 expression on T cells plays an essential role in LN homing. Notably, the proportions of CD4<sup>+</sup> and CD8<sup>+</sup> T cells were increased in mice bearing only CCR7-deficient T cells (Fig. 6B). However, the assessment of the influenza-specific T response showed similar expansion of NP34-specific CD8<sup>+</sup> T cells in RAG/WT as compared with RAG/CCR7<sup>-/-</sup> mice, and restimulation with influenza virus and peptide ex vivo resulted in a comparable production of IFN- $\gamma$  by CD8<sup>+</sup> T cells. IFN- $\gamma$  by CD4<sup>+</sup> T cells was





**FIGURE 6.** CCR7-dependent entry and localization of T cells is not critical for the priming and expansion of specific CD4<sup>+</sup> and CD8<sup>+</sup> T cells in the LN. **A**, CCR7-deficient and C57BL/6 mice were infected i.v. with  $2 \times 10^5$  PFU of PR8 influenza virus and sacrificed 10 days p.i. The graphs from left to right show: total number of NP34-tetramer<sup>+</sup> T cells in the spleen; proportion of NP34<sup>+</sup>CD8<sup>+</sup> T cells, gated on lymphocytes; and IFN- $\gamma$  production by CD8<sup>+</sup> T cells after specific restimulation. **B** and **C**, C57BL/6 mice were lethally irradiated and reconstituted with bone marrow from RAG-deficient mice (3/4) and bone marrow from either C57BL/6 or CCR7-deficient mice (1/4). Chimeric mice were infected with 50 PFU PR8 influenza virus intranasally, and lung draining LN were taken 12 days p.i. for analysis. **B**, Total cell count and the proportions of CD8<sup>+</sup> and CD4<sup>+</sup> T cells in the lung draining LN. **C**, Total number of NP34-tetramer<sup>+</sup> T cells from the LN, gated on live cells, and IFN- $\gamma$  production by CD8<sup>+</sup> and CD4<sup>+</sup> T cells after specific restimulation. Data are representative of three independent experiments with three to four mice per group. Data in **B** and **C** are pooled from two independent experiments.

higher in RAG/CCR7<sup>-/-</sup> mice as compared with the control group, further highlighting that CCR7<sup>-/-</sup> T cells have no inherent defect in their activation (Fig. 6C). The significant decrease in total lymphocyte numbers in the draining LN was reflected in reduced total numbers of specific CD8<sup>+</sup> T cells in the BAL (data not shown). Overall, these data indicate that CD4<sup>+</sup> and CD8<sup>+</sup> T cells from CCR7-deficient mice have no intrinsic defect in activation, that CCR7 expression on T cells is critical but not requisite to enter the draining LN, and that the CCR7-dependent localization of T cells within the draining LN does not affect the generation of specific CD4<sup>+</sup> and CD8<sup>+</sup> T cells. Thus, CCR7-dependent active Ag transport by DC is necessary to induce influenza-specific CD8<sup>+</sup> T cells.

## Discussion

A number of studies highlight the importance of CCR7-mediated migration of DC from the periphery to the draining LN for presentation of Ag to naive T cells (7, 33). However, the role of CCR7 in directing DC migration from the airways during an infection with influenza virus has not been addressed. Furthermore, the necessity for active transport of influenza-derived Ags to reach the draining LN remains controversial since it has been reported that influenza-specific adaptive immune re-

sponses can be initiated locally in the airways (19, 20). We demonstrate in this study that CCR7-mediated Ag transport from the airways to the draining LN is central to the development of an influenza-specific CD8<sup>+</sup> T cell response. We further show that a small pool of influenza-specific CD4<sup>+</sup> T cells is generated in the draining LN of infected CCR7-deficient mice, leading to a delayed but robust generation of class switched virus-specific Abs. It is notable that effective Ab isotype class switching occurs in this environment where the CD4<sup>+</sup> Th response is impaired; clearly, very few CD4<sup>+</sup> T cells are required to sustain an anti-influenza Ab response.

Immune responses against influenza infection of the airways develop in the mediastinal LN, where priming and proliferation of CD8<sup>+</sup> and CD4<sup>+</sup> T cells as well as B cell activation and Ab isotype class switching occur. Analysis of cell cycling has revealed that T cells almost exclusively proliferate in the LN while T cells in the airways do not divide but exhibit effector function upon Ag challenge (34, 35). Thus, it is key to the initiation of a specific T cell response that Ag reaches the LN. Our study confirms these findings by showing that CCR7-mediated migration of airway-derived APCs was largely required for the generation of influenza-specific T cells. Studies with lymphotoxin- $\alpha$ -deficient mice, which lack LN, showed that a

specific T response against influenza virus can develop, albeit delayed, that is sufficient to mediate antiviral protection (19). More recent results by the same group indicated that the absence of lung draining LN leads to the formation of inducible BALT, concluding that the immune responses against influenza infection can take place locally in the lung (20). It was recently shown that CCR7-deficient mice also develop BALT spontaneously (25). Despite the reported presence of BALT in CCR7-deficient mice, we did not find any evidence for a locally induced CD8<sup>+</sup> T cell response in CCR7-deficient mice even at late time points p.i., suggesting that CCR7-mediated active Ag transport to the LN was still necessary for a robust influenza-specific T cell response. Considering that lymphotoxin- $\alpha$ -deficient mice develop spontaneous chronic airway inflammation and recruitment of activated lymphocytes (36), it is possible that the BALT observed in these mice is not induced by an influenza infection but rather develops from preexisting lymphoid aggregates. The defect in the generation of influenza-specific CD8<sup>+</sup> T cells in CCR7-deficient mice is in line with a recent report showing that *plt/plt* mice, which lack the CCR7 ligands CCL19 and CCL21, also do not develop an influenza-specific CD8<sup>+</sup> T cell response in the airways (37). In our study, specific CD8<sup>+</sup> T cells were not only below the limits of detection in the lung and to a large degree in the mediastinal LN in the absence of CCR7, but also in the spleen, indicating that CCR7 signaling is also pivotal for the generation of the large pool of influenza-specific CD8<sup>+</sup> T cells in the spleen. However, it still remains to be clarified whether primed CD8<sup>+</sup> T cells from the lung draining LN emigrate via efferent lymphatics to the spleen, where they expand, or whether Ag-loaded DC migrate from the airways to the spleen where they prime CD8<sup>+</sup> T cells directly. We also demonstrated that the absence of CCR7 signaling leads to prolonged bystander CD8<sup>+</sup> T cell recruitment to the airways of infected mice, which we attribute to the inflammatory chemokine profile evident in the course of the influenza infection. Data by Ely et al. indicate that memory CD8<sup>+</sup> T cells are rapidly recruited during heterologous respiratory virus infections (38). The chemokine ligands CXCL9, CXCL10, and CXCL11, which share the chemokine receptor CXCR3, were significantly up-regulated at day 10 p.i. in CCR7-deficient mice. CXCR3 is particularly expressed on T cells of the activated/memory phenotype and is associated with the Th1 subset (39, 40). It was recently shown that the total memory CD8<sup>+</sup> T cell population has the ability to migrate toward CXCR3 ligands *in vitro*; however, the key chemokine receptor for Ag-specific memory T cell recruitment *in vivo* was identified as being CCR5, indicating that prolonged expression of CXCR3 may lead to a general recruitment of memory T cells but not Ag-specific T cells (41). However, it appears that nonspecific CD8<sup>+</sup> T cells do not contribute to the clearance of virus (42). Our finding supports this by showing that influenza virus can still be detected at day 10 after infection in CCR7-deficient mice while it was cleared in wild-type mice by this time point. Thus, we suggest that the extended presence of influenza virus in the airways of CCR7-deficient mice leads to prolonged chemokine expression, which results in further nonspecific CD8<sup>+</sup> T cell recruitment. Additionally, we show that the number as well as the effector function of CD4<sup>+</sup> T cells infiltrating the lung was reduced in CCR7-deficient mice, similar to the deficiency in the generation of specific CD8<sup>+</sup> T cells. This indicates that CCR7-dependent migration of DC is also requisite for the priming and expansion of specific CD4<sup>+</sup> T cells. Indeed, early work by Levin et al. show that only DC are capable of activating naive CD4<sup>+</sup> T cells efficiently (43). In contrast to the air-

ways, we could still detect a small population of specific CD4<sup>+</sup> T cells in the draining LN of CCR7-deficient mice, which was sufficient to induce germinal center formation and Ab isotype class switching. Thus, the question remains how Ag reaches the draining LN in the absence of CCR7-dependent cell-mediated transport. It cannot be excluded that cell-free virions reach the LN by drainage via afferent lymph, where they are taken up by LN-resident DC and macrophages and are presented as exogenously derived Ag to CD4<sup>+</sup> T cells. In an attempt to address the role of Ag drainage from the periphery to the LN, Shaw and coworkers have applied high-molecular mass molecules subcutaneously into mice and found that these molecules do not localize in the cortical T cell zone of the LN but in the subcapsular sinus before they are drained into efferent lymphatic vessels, even under inflammatory conditions (44). However, a recent report addressing the transport of lymph-borne vesicular stomatitis virus into the LN showed that resident macrophages can take up virus particles from the subcapsular sinus and shuttle them to virus-specific B cells, which then migrate into B cell follicles, but not to the paracortical T cell area (45). Nevertheless, note that the routes of application for most studies investigating Ag drainage are systemic or subcutaneous, which cannot directly be compared with the lung mucosal environment. Whether drainage of cell-free virions or a CCR7-independent cell-mediated Ag transport to the LN accounts for the expansion of influenza-specific CD4<sup>+</sup> T cells remains to be clarified.

Interestingly, we found that the small number of specific CD4<sup>+</sup> T cells generated in LN of CCR7-deficient mice was sufficient to induce the formation of germinal centers and Ab class switching, which critically depend on specific CD4<sup>+</sup> T help via CD40-CD40L interaction (46). The magnitude of the IgG Ab isotype response was similar in CCR7-deficient mice and wild-type mice, although it was delayed, presumably due to defective priming of naive CD4<sup>+</sup> T cells. Notably, bystander T cell help is sufficient for class switching to IgA isotypes (16), which is supported by our result demonstrating early production of IgA Abs in the absence of specific T cells.

It was shown by several groups that CCR7 signaling is not solely involved in DC homing to the LN, but also plays a central role in T cell entry into the LN and localization therein (7, 32, 47). Our data with the chimeric mice showed that the differential activation of CD4<sup>+</sup> T cells and CD8<sup>+</sup> T cells was independent of their expression of CCR7. This suggests that a mechanism other than intranodal CD4<sup>+</sup> and CD8<sup>+</sup> T cell localization accounts for the defect in the generation of influenza-specific CD8<sup>+</sup> T cells. Recent reports suggest that nonmigratory CD8 $\alpha^+$  DC are specialized in cross-presentation of exogenous Ags and are therefore the major activator of naive CD8<sup>+</sup> T cells (48, 49). However, Belz et al. describe both migratory and LN resident DC populations as being potent inducers of CD8<sup>+</sup> T cell priming during influenza infection (50). Moreover, GeurtsvanKessel and colleagues showed that migratory CD11c<sup>+</sup>CD11b<sup>-</sup>CD8 $\alpha^-$  DC presented influenza Ag to both CD4<sup>+</sup> and CD8<sup>+</sup> T cells while the LN resident CD11c<sup>+</sup>CD11b<sup>-</sup>CD8 $\alpha^+$  presented to CD8<sup>+</sup> T cells (51). Our data indicate that while the activation of influenza-specific CD4<sup>+</sup> T cells may occur through drainage, and thus LN resident DCs, the migration of airway-derived DC was requisite for activating naive CD8<sup>+</sup> T cells, either directly or through the transfer of Ag to LN resident CD8 $\alpha^+$  DC.

In conclusion, we demonstrate herein that the absence of CCR7 signaling on DC leads to a severe defect in the generation of influenza-specific CD8<sup>+</sup> T cells, which is not compensated for locally in the airways. We further show that delayed clearance of

influenza virus due to the absence of specific T cells results in prolonged recruitment of nonspecific T cells into the airways. Surprisingly, although the generation of specific CD4<sup>+</sup> T cells was greatly reduced in CCR7-deficient mice, the few CD4<sup>+</sup> T cells specific for influenza in the draining LN were sufficient to induce germinal centers and class switching to IgG isotypes. Taken together, this study reveals that CD4<sup>+</sup> and CD8<sup>+</sup> T cells exhibit differential requirements for CCR7-mediated active Ag transport during influenza infection and that the key protective mechanism against influenza infection (i.e., specific Abs) is safeguarded by only requiring a fraction of the T cell response to develop normally.

## Disclosures

The authors have no financial conflicts of interest.

## References

- Diebold, S. S., T. Kaisho, H. Hemmi, S. Akira, and C. Reis e Sousa. 2004. Innate antiviral responses by means of TLR7-mediated recognition of single-stranded RNA. *Science* 303: 1529–1531.
- Kato, H., O. Takeuchi, S. Sato, M. Yoneyama, M. Yamamoto, K. Matsui, S. Uematsu, A. Jung, T. Kawai, K. J. Ishii, et al. 2006. Differential roles of MDA5 and RIG-I helicases in the recognition of RNA viruses. *Nature* 441: 101–105.
- Banchereau, J., and R. M. Steinman. 1998. Dendritic cells and the control of immunity. *Nature* 392: 245–252.
- Heer, A. K., A. Shamshiev, A. Donda, S. Uematsu, S. Akira, M. Kopf, and B. J. Marsland. 2007. TLR signaling fine-tunes anti-influenza B cell responses without regulating effector T cell responses. *J. Immunol.* 178: 2182–2191.
- Medzhitov, R. 2001. Toll-like receptors and innate immunity. *Nat. Rev. Immunol.* 1: 135–145.
- Hamilton-Easton, A., and M. Eichelberger. 1995. Virus-specific antigen presentation by different subsets of cells from lung and mediastinal lymph node tissues of influenza virus-infected mice. *J. Virol.* 69: 6359–6366.
- Forster, R., A. Schubel, D. Breitfeld, E. Kremmer, I. Renner-Muller, E. Wolf, and M. Lipp. 1999. CCR7 coordinates the primary immune response by establishing functional microenvironments in secondary lymphoid organs. *Cell* 99: 23–33.
- Schnare, M., G. M. Barton, A. C. Holt, K. Takeda, S. Akira, and R. Medzhitov. 2001. Toll-like receptors control activation of adaptive immune responses. *Nat. Immunol.* 2: 947–950.
- Eichelberger, M., W. Allan, M. Zijlstra, R. Jaenisch, and P. C. Doherty. 1991. Clearance of influenza virus respiratory infection in mice lacking class I major histocompatibility complex-restricted CD8<sup>+</sup> T cells. *J. Exp. Med.* 174: 875–880.
- Allan, W., Z. Tabi, A. Cleary, and P. C. Doherty. 1990. Cellular events in the lymph node and lung of mice with influenza. Consequences of depleting CD4<sup>+</sup> T cells. *J. Immunol.* 144: 3980–3986.
- Graham, M. B., and T. J. Braciale. 1997. Resistance to and recovery from lethal influenza virus infection in B lymphocyte-deficient mice. *J. Exp. Med.* 186: 2063–2068.
- Kopf, M., F. Brombacher, and M. F. Bachmann. 2002. Role of IgM antibodies versus B cells in influenza virus-specific immunity. *Eur. J. Immunol.* 32: 2229–2236.
- Scherle, P. A., and W. Gerhard. 1986. Functional analysis of influenza-specific helper T cell clones in vivo: T cells specific for internal viral proteins provide cognate help for B cell responses to hemagglutinin. *J. Exp. Med.* 164: 1114–1128.
- Mozdzanowska, K., M. Furchner, D. Zharkova, J. Feng, and W. Gerhard. 2005. Roles of CD4<sup>+</sup> T-cell-independent and -dependent antibody responses in the control of influenza virus infection: evidence for noncognate CD4<sup>+</sup> T-cell activities that enhance the therapeutic activity of antiviral antibodies. *J. Virol.* 79: 5943–5951.
- Mozdzanowska, K., K. Maiese, and W. Gerhard. 2000. Th cell-deficient mice control influenza virus infection more effectively than Th- and B cell-deficient mice: evidence for a Th-independent contribution by B cells to virus clearance. *J. Immunol.* 164: 2635–2643.
- Sangster, M. Y., J. M. Riberdy, M. Gonzalez, D. J. Topham, N. Baumgarth, and P. C. Doherty. 2003. An early CD4<sup>+</sup> T cell-dependent immunoglobulin A response to influenza infection in the absence of key cognate T-B interactions. *J. Exp. Med.* 198: 1011–1021.
- Eichelberger, M. C., M. L. Wang, W. Allan, R. G. Webster, and P. C. Doherty. 1991. Influenza virus RNA in the lung and lymphoid tissue of immunologically intact and CD4-depleted mice. *J. Gen. Virol.* 72: 1695–1698.
- Karrer, U., A. Althage, B. Odermatt, C. W. Roberts, S. J. Korsmeyer, S. Miyawaki, H. Hengartner, and R. M. Zinkernagel. 1997. On the key role of secondary lymphoid organs in antiviral immune responses studied in alymphoplastic (aly/aly) and spleenless (Hox11<sup>-/-</sup>) mutant mice. *J. Exp. Med.* 185: 2157–2170.
- Lund, F. E., S. Partida-Sanchez, B. O. Lee, K. L. Kusser, L. Hartson, R. J. Hogan, D. L. Woodland, and T. D. Randall. 2002. Lymphotoxin-β-deficient mice make delayed, but effective, T and B cell responses to influenza. *J. Immunol.* 169: 5236–5243.
- Moyron-Quiroz, J. E., J. Rangel-Moreno, K. Kusser, L. Hartson, F. Sprague, S. Goodrich, D. L. Woodland, F. E. Lund, and T. D. Randall. 2004. Role of inducible bronchus associated lymphoid tissue (iBALt) in respiratory immunity. *Nat. Med.* 10: 927–934.
- Hintzen, G., L. Ohl, M. L. del Rio, J. I. Rodriguez-Barbosa, O. Pabst, J. R. Kocks, J. Krege, S. Hardtke, and R. Forster. 2006. Induction of tolerance to innocuous inhaled antigen relies on a CCR7-dependent dendritic cell-mediated antigen transport to the bronchial lymph node. *J. Immunol.* 177: 7346–7354.
- Lutz, M. B., N. Kukulski, A. L. Ogilvie, S. Rossner, F. Koch, N. Romani, and G. Schuler. 1999. An advanced culture method for generating large quantities of highly pure dendritic cells from mouse bone marrow. *J. Immunol. Methods* 223: 77–92.
- Frohlich, A., B. J. Marsland, I. Sonderegger, M. Kurrer, M. R. Hodge, N. L. Harris, and M. Kopf. 2007. IL-21 receptor signaling is integral to the development of Th2 effector responses in vivo. *Blood* 109: 2023–2031.
- van Elden, L. J., M. Nijhuis, P. Schipper, R. Schuurman, and A. M. van Loon. 2001. Simultaneous detection of influenza viruses A and B using real-time quantitative PCR. *J. Clin. Microbiol.* 39: 196–200.
- Kocks, J. R., A. C. Davalos-Misslitz, G. Hintzen, L. Ohl, and R. Forster. 2007. Regulatory T cells interfere with the development of bronchus-associated lymphoid tissue. *J. Exp. Med.* 204: 723–734.
- Haanen, J. B., M. Toebes, T. A. Cordaro, M. C. Wolkers, A. M. Kruisbeek, and T. N. Schumacher. 1999. Systemic T cell expansion during localized viral infection. *Eur. J. Immunol.* 29: 1168–1174.
- Johnston, B., A. R. Burns, M. Suematsu, T. B. Issekutz, R. C. Woodman, and P. Kubes. 1999. Chronic inflammation upregulates chemokine receptors and induces neutrophil migration to monocyte chemoattractant protein-1. *J. Clin. Invest.* 103: 1269–1276.
- Rot, A., and U. H. von Andrian. 2004. Chemokines in innate and adaptive host defense: basic chemokines grammar for immune cells. *Annu. Rev. Immunol.* 22: 891–928.
- Luther, S. A., and J. G. Cyster. 2001. Chemokines as regulators of T cell differentiation. *Nat. Immunol.* 2: 102–107.
- Piqueras, B., J. Connolly, H. Freitas, A. K. Palucka, and J. Banchereau. 2006. Upon viral exposure, myeloid and plasmacytoid dendritic cells produce 3 waves of distinct chemokines to recruit immune effectors. *Blood* 107: 2613–2618.
- Doherty, P. C., R. B. Effros, and J. Bennink. 1977. Heterogeneity of the cytotoxic response of thymus-derived lymphocytes after immunization with influenza viruses. *Proc. Natl. Acad. Sci. USA* 74: 1209–1213.
- Gunn, M. D., S. Kyuwa, C. Tam, T. Kakiuchi, A. Matsuzawa, L. T. Williams, and H. Nakano. 1999. Mice lacking expression of secondary lymphoid organ chemokine have defects in lymphocyte homing and dendritic cell localization. *J. Exp. Med.* 189: 451–460.
- Junt, T., E. Scandella, R. Forster, P. Krebs, S. Krautwald, M. Lipp, H. Hengartner, and B. Ludewig. 2004. Impact of CCR7 on priming and distribution of antiviral effector and memory CTL. *J. Immunol.* 173: 6684–6693.
- Harris, N. L., V. Watt, F. Ronchese, and G. Le Gros. 2002. Differential T cell function and fate in lymph node and nonlymphoid tissues. *J. Exp. Med.* 195: 317–326.
- Tripp, R. A., S. Hou, A. McMickle, J. Houston, and P. C. Doherty. 1995. Recruitment and proliferation of CD8<sup>+</sup> T cells in respiratory virus infections. *J. Immunol.* 154: 6013–6021.
- Kang, H. S., S. E. Blink, R. K. Chin, Y. Lee, O. Kim, J. Weinstock, T. Waldschmidt, D. Conrad, B. Chen, J. Solway, et al. 2003. Lymphotoxin is required for maintaining physiological levels of serum IgE that minimizes Th1-mediated airway inflammation. *J. Exp. Med.* 198: 1643–1652.
- Rangel-Moreno, J., J. E. Moyron-Quiroz, L. Hartson, K. Kusser, and T. D. Randall. 2007. Pulmonary expression of CXC chemokine ligand 13, CC chemokine ligand 19, and CC chemokine ligand 21 is essential for local immunity to influenza. *Proc. Natl. Acad. Sci. USA* 104: 10577–10582.
- Ely, K. H., L. S. Cauley, A. D. Roberts, J. W. Brennan, T. Cookenham, and D. L. Woodland. 2003. Nonspecific recruitment of memory CD8<sup>+</sup> T cells to the lung airways during respiratory virus infections. *J. Immunol.* 170: 1423–1429.
- Qin, S., J. B. Rottman, P. Myers, N. Kassam, M. Weinblatt, M. Loetscher, A. E. Koch, B. Moser, and C. R. Mackay. 1998. The chemokine receptors CXCR3 and CCR5 mark subsets of T cells associated with certain inflammatory reactions. *J. Clin. Invest.* 101: 746–754.
- Bonecchi, R., G. Bianchi, P. P. Bordignon, D. D'Ambrosio, R. Lang, A. Borsatti, S. Sozzani, P. Allavena, P. A. Gray, A. Mantovani, and F. Sinigaglia. 1998. Differential expression of chemokine receptors and chemotactic responsiveness of type 1 T helper cells (Th1s) and Th2s. *J. Exp. Med.* 187: 129–134.
- Kohlmeier, J. E., S. C. Miller, J. Smith, B. Lu, C. Gerard, T. Cookenham, A. D. Roberts, and D. L. Woodland. 2008. The chemokine receptor CCR5 plays a key role in the early memory CD8<sup>+</sup> T cell response to respiratory virus infections. *Immunity* 29: 101–113.
- Ehl, S., J. Hombach, P. Aichele, H. Hengartner, and R. M. Zinkernagel. 1997. Bystander activation of cytotoxic T cells: studies on the mechanism and evaluation of in vivo significance in a transgenic mouse model. *J. Exp. Med.* 185: 1241–1251.
- Levin, D., S. Constant, T. Pasqualini, R. Flavell, and K. Bottomly. 1993. Role of dendritic cells in the priming of CD4<sup>+</sup> T lymphocytes to peptide antigen in vivo. *J. Immunol.* 151: 6742–6750.
- Gretz, J. E., C. C. Norbury, A. O. Anderson, A. E. Proudfoot, and S. Shaw. 2000. Lymph-borne chemokines and other low molecular weight molecules reach high

- endothelial venules via specialized conduits while a functional barrier limits access to the lymphocyte microenvironments in lymph node cortex. *J. Exp. Med.* 192: 1425–1440.
45. Junt, T., E. A. Moseman, M. Iannacone, S. Massberg, P. A. Lang, M. Boes, K. Fink, S. E. Henrickson, D. M. Shayakhmetov, N. C. Di Paolo, et al. 2007. Subcapsular sinus macrophages in lymph nodes clear lymph-borne viruses and present them to antiviral B cells. *Nature* 450: 110–114.
46. Kawabe, T., T. Naka, K. Yoshida, T. Tanaka, H. Fujiwara, S. Suematsu, N. Yoshida, T. Kishimoto, and H. Kikutani. 1994. The immune responses in CD40-deficient mice: impaired immunoglobulin class switching and germinal center formation. *Immunity* 1: 167–178.
47. Worbs, T., T. R. Mempel, J. Bolter, U. H. von Andrian, and R. Forster. 2007. CCR7 ligands stimulate the intranodal motility of T lymphocytes in vivo. *J. Exp. Med.* 204: 489–495.
48. Allan, R. S., J. Waithman, S. Bedoui, C. M. Jones, J. A. Villadangos, Y. Zhan, A. M. Lew, K. Shortman, W. R. Heath, and F. R. Carbone. 2006. Migratory dendritic cells transfer antigen to a lymph node-resident dendritic cell population for efficient CTL priming. *Immunity* 25: 153–162.
49. Schnorrer, P., G. M. Behrens, N. S. Wilson, J. L. Pooley, C. M. Smith, D. El-Sukkari, G. Davey, F. Kupresanin, M. Li, E. Maraskovsky, et al. 2006. The dominant role of CD8<sup>+</sup> dendritic cells in cross-presentation is not dictated by antigen capture. *Proc. Natl. Acad. Sci. USA* 103: 10729–10734.
50. Belz, G. T., C. M. Smith, L. Kleinert, P. Reading, A. Brooks, K. Shortman, F. R. Carbone, and W. R. Heath. 2004. Distinct migrating and nonmigrating dendritic cell populations are involved in MHC class I-restricted antigen presentation after lung infection with virus. *Proc. Natl. Acad. Sci. USA* 101: 8670–8675.
51. GeurtsvanKessel, C. H., M. A. Willart, L. S. van Rijt, F. Muskens, M. Kool, C. Baas, K. Thielemans, C. Bennett, B. E. Clausen, H. C. Hoogsteden, et al. 2008. Clearance of influenza virus from the lung depends on migratory langerin<sup>+</sup>CD11b<sup>-</sup> but not plasmacytoid dendritic cells. *J. Exp. Med.* 205: 1621–1634.