

White Paper Report

Report ID: 109250

Application Number: PW-51452-13

Project Director: Thomas Gouttierre (teg@unomaha.edu)

Institution: University of Nebraska, Omaha

Reporting Period: 5/1/2013-6/30/2014

Report Due: 9/30/2014

Date Submitted: 9/23/2014

WHITE PAPER RESULTS OF NEH FOUNDATION GRANT

TO

NATIONAL ENDOWMENT OF THE HUMANITIES GRANT PW5145213

**METADATA CONSTRUCTION AND DIGITIZING MAPS OF AFGHANISTAN AND
PAKISTAN PROJECT**

PROFESSOR THOMAS GOUTTIERRE

AND

EMERITUS PROFESSOR JOHN F. SHRODER

CENTER FOR AFGHANISTAN STUDIES

UNIVERSITY OF NEBRASKA AT OMAHA

23 September 2014

Executive Summary

The NEH Foundation Grant PW5145213 for the Metadata Construction and Digitizing Maps of Afghanistan and Pakistan Project has been completed successfully with the tripling of the original known topographic and topical map holdings, now to some 2313 maps, a sampling of which have been evaluated for metadata construction, scanned, and are now contained on the new web portal (<http://afghanmaps.ist.unomaha.edu/geonetwork>) set up to provide public access to most of the collection. The original paper copies of the map collection have been reordered, inventoried, index mapped, described, and preserved in folders in new map cabinets in the climate-controlled Arthur and Daisy Paul Afghanistan Collection (A&DPAC) in the Criss Library of the University of Nebraska at Omaha. Considerable new textual material has also been obtained, scanned and is in the process of being incorporated by library cataloguers into the A&DPAC as well. A near complete, electronic collection of topographic and city maps from The US Department of Defense, US Army Corps of Engineers, has also been obtained and put in the A&DPAC, with password access to authorized personnel, although it is expected that this Limited Distribution classification will be relaxed to full public access at a later date. The full collection was evaluated and approved by human and cultural geographers, Drs. Nigel Allan and Thomas Eighmy. The preservation of the geospatial materials from America's longest war is regarded as an important addition to the national record, with value to future historians. The value of the collection to the reconstruction and development of Afghanistan in future will be facilitated by the additional electronic preservation of the materials at two locations in South Asia as well: the Afghanistan Centre Collection at Kabul University (ACKU) and the collections of the International Centre of Integrated Mountain Development (ICIMOD), both of whom have expressed a desire to host copies of our materials.

1.1 Introduction

The overall idea of preservation of the collection of Afghanistan maps and unique textual material at the University of Nebraska at Omaha (UNO) is that a unique and comprehensive research collection has existed in largely private hands there for over 40 years that has needed to be preserved for posterity. The collection began in the early 1970s when Dr. John Shroder became the Project Director of the National Atlas of Afghanistan, a post that he held until the invasion of Afghanistan in late 1979 by the Soviet Union. Over the subsequent years of the

Soviet occupation in the 1980s, the civil war of the 1990s, and the US-NATO invasion of the 2000s, the maps served as a research and teaching collection for many students and faculty collaborators, and some outsider military and intelligence agents, but in the process the maps became somewhat dispersed to various locations on campus.

In the pilot project funded by NEH as a foundation grant (PW5145213), the rather disorganized collection was sorted out into physical copies of maps, by sheet number (corresponding to areas of land) where possible, and organized into folders of similar type. Digital lists of maps were created, including titles, sheet numbers, other identifiers, authors, publishers, dates, scales, subjects, and notes on content. Proofreading for errors and accuracy was done of the existing lists of materials that had been made at various times in the past by different people, such as J. Shroder, J.Olsholler, J. England, and M. Lewis. Compilation of existing lists was done to establish a master list that is as complete and accurate as possible.

The collection has now been reordered, inventoried, described, and preserved in folders. Selected samples from the collection have been scanned and made available for this report. Over 95 percent of the extensive collection has been consolidated and indexed into several new storage decks of map drawers in the Arthur and Daisy Paul Afghanistan Collection, under the direction of Librarian Ms. Shaista Wahab, in the Criss Library of the University of Nebraska at Omaha. About 5 percent of the map collection on Afghanistan and over 80 percent of the cartographic material on Pakistan has been retained in the Emeritus office and lab of Professor Shroder, inasmuch as several applied projects on education and resource assessment in Afghanistan and Pakistan necessitates that retention of selected maps for the present time. At a later time all of this material will be transferred to the library. In an interesting sidelight to this collection, it is contained in the same contiguous space in the library as that of the Senatorial papers of UNO alumni, Chuck Hagel, now Secretary of Defense.

Since December 2013, when the UNO Interim Performance Report for this grant was produced, Dr. Shroder and students, Nate Schlagel and Ebrahim Abdulsitar, have been curating the collection of maps and materials on Afghanistan for this NEH project. Since the last full update after many of the maps were brought for permanent storage to the library, student Schlagel has been sorting maps numbering in the many hundreds. He also added over 200 maps to the original master list constructed by Shroder's former student England from the US Army, and has

found several hundred other maps that have been added as well. Schlagel also has noted a number of errors in England's master list and has made suitable corrections. In addition, Professor Shroder has obtained an additional near-complete electronic collection of the entire USDOD map catalogue (749 maps) that is discussed in detail below.

As to errors, some that were discovered earlier regard the maps from the old Afghanistan Cartographic Institute (ACI) that was dominated by advisors from the Soviet Union in the 1970s-80s. Schlagel made notes he used to correct the author/publisher columns in the master list: perhaps it is accurate to say that the Fairchild Aerial Surveys, Co, from the USA is the author for all of them, and that only the publisher has been changed for some editions (Afghanistan Ministry of Mines for the Fairchild examples, with the small print extra information and no alternating hashes on the borders, and ACI published the ones with no extra information and black and white hashes around the borders).

1.2 Examples of textual material:

Scans of written and other materials that have been made into electronic files include:

- Consulting files and maps by Shroder with Rand Co. on the Marjah area of Helmand Province prior to invasion by US Marine Corps in 2010 in Operation Moshtarak.
- Consulting files and maps by Shroder to MRCE Co. in connection with ground-failure area directly south of Kunduz airport due to inaccurate mapping by Soviet geologists and acceptance by US Geological Survey without field checking.
- Geoscience Adventures in the Hindu Kush: Tectonic to Terrorist Terranes. Power Point presentation by Shroder 2005.
- General Josiah Harlan's book of 1842, which is antiquarian material from the time of the American Civil War period as a gift to the Lincoln White House. The book has corrections in pencil in General Harlan's own hand about his early involvement with the British in Afghanistan that has never before been seen by scholars. Prior to his service as a Union General in the American Civil War, Josiah Harlan, the first American explorer and soldier of fortune to set foot in Afghanistan, brought home a wealth of his Afghan observations and wrote the book about it. After a lecture on Afghanistan in 1978 by Dr. Shroder in Manchester, VT, Shroder was presented with this book as a gift to him from

the Hildene estate of Mary Lincoln “Peggy” Beckwith, Abraham Lincoln’s great-granddaughter.

- Void-filled SRTM (Shuttle Radar Topographic Mission) For the Whole Country of Afghanistan (Projected in Transverse Mercator Coordinate System) made by US Geological Survey.
- Nigel Allan 2007 lecture on: Passland and Plants: Mapping of Afghanistan by British and Nazi Germany.
- Kabul, Afghanistan 2004: Photographs by J. Shroder.
- Afghanistan Immersion Lectures (Shroder’s training Power Points for DOD & US intelligence agencies).
 1. Geospatial Afghanistan (history of UNO’s involvement in Afghanistan).
 2. Geology & minerals (Afghanistan).
 3. Afghanistan soils & vegetation.
 4. Afghanistan H₂O cycle (climate, ice).
 5. Afghanistan H₂O cycle (rivers & groundwater).
 6. Afghanistan climate change.
 7. Afghanistan development.
 8. Flipping Taliban.
 9. Registering human terrain (cadastre).
 10. Pushtunwali (tribal code).
 11. Helmand poppy solutions.

1.3 Examples of map materials available:

The main task of this NEH grant was to relocate all of the Afghanistan map collection belonging to Dr. J. Shroder from its several locations; clean up the many different folders and curate and incorporate all similar types together to enable organized indexing. Appendix 1.9 A has a complete listing of the present (May 2014) map holdings; the following are a listing of scanned map examples now available on-line in our new website as a result of this project (<http://afghanmaps.ist.unomaha.edu/geonetwork>). Each of these maps is exemplary of tens to hundreds of additional similar but different maps in that category.

- Late 19th century map of the borders of Afghanistan to illustrate the life of Abdur Rahman Khan.
- 1910 skeleton map of Bokhara (with northern Afghanistan).
- 1958 (July) Afghanistan Administrative Divisions.
- Afghanistan index map of minor civil subdivisions.
- 1958-1960 Bamiyan; DOD 1:100,000.
- 1958-1960 Jalalabad (north): DOD 1:50,000
- 1965 Map of Afghanistan.
- Central Intelligence Agency; Political Population Ethnolinguistics, Land Use, and Economic Activity of Afghanistan.
- 1972 Map of forests, irrigated land, sand dunes; Christoph Jentsch.
- Early 1970s archeological reconnaissance; Archaeologische Fundorkarte von Sudwest Afghanistan.
- 1973 Ethnic map of Louis Dupree
- 1989 Afghanistan political population; Soviet and liberated areas of Afghanistan
- 1990 Map of Paktiya Province
- Konar
- Languages of Nuristan
- 2001 Afghanistan soils
- 2010 Afghanistan Digital Elevation Model

1.4 Full spectrum mapability of Afghanistan and neighboring nations in modern times:

The US Army Corps of Engineers has need of access to a full suite of high-quality topographic maps of Afghanistan for building roads, airbases, flight corridors, bridges, military camps, canals, and the myriad of other situations in which they may be called upon to improve transport, living conditions, water supplies, and other such factors requiring robust civil engineering.

Accordingly, a full complement of mapping capabilities has long been developed at all appropriate scales ranging in increasing detail (larger scales) as follows: 1:1,000,000 – ONC; 1:500,000 – TPC; 1:250,000 – JOG; 1:100,000 – TLM100; 1:50,000 – TLM50; 1:25,000 – ICM; 1:12,500 – CG (Table 1, Appendix B). These maps can be used, for example, for flying

airplanes using the small-scale maps (1:1,000,000; 1:500,000; Table 2; Figures 1 & 2), or plotting out such things as highway routes, irrigation canals, or electric transmission lines (1:250,000; 1:100,000; 1:50,000; Tables 3, 4 & 5, Appendix B; Figures 3, 4 & 5, Appendix C), or for driving around complex cities (1:25,000; 1:12,500; Tables 5 & 6, Appendix B; Figures 5 & 6, Appendix C). These maps are already available in fully interactive and indexed electronic copies, which makes work with them extraordinarily easy.

For Afghanistan the total (749) of up-to-date new maps obtained recently shows so many of the changes in the country over recent decades since the original air-photo surveys of the late 1950s and early 1960s. The use of satellite imagery has obviously been used over the past 40-odd years to upgrade maps in terms of city growth, new highways, drastic river channel avulsion away from the borders that were once defined by the river channel (thalweg – deepest trace) location, etc. Dates of map revision vary from the 1980s to the 2000s, so blanket country-wide change detection at simultaneous dates everywhere with these unusual map materials is not possible; still some areas offer useful geographic data for certain spot change-detection studies. Many of the maps are obvious scans made of older maps and updated somewhat hurriedly to become the invasion maps of the late fall season of 2001. Quite a number have been updated in the mid-2000s to reflect certain tactical or strategic needs of those times as Taliban reconstituted itself and went back on the offensive after their profound defeat in 2001-2002.

The ONC and TPC map sets (Table 2, Appendix B; Figures 1 & 2) are conventional small-scale maps (1:1,000,000 & 1:500,000) of the Afghanistan region that are available over-the-counter in map stores, as well as on-line so are not especially unusual, but having them in easily accessible, electronic availability on the UNO Afghanistan website can be a considerable convenience to scholars and those interested in the region.

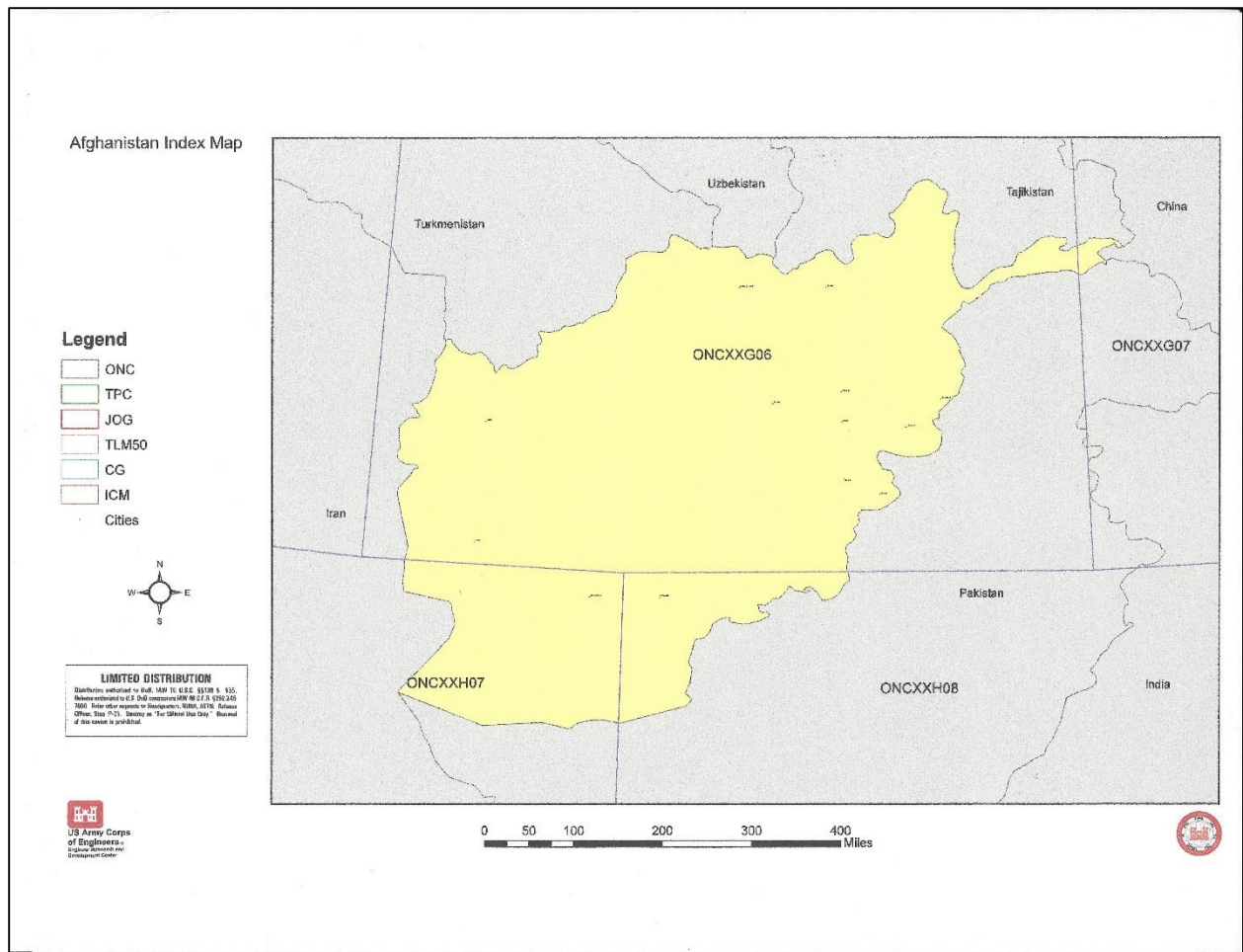


Figure 1. Interactive map (in the original) of Operational Navigation Chart (ONC) maps (scale 1:1,000,000) of the Afghanistan region that are stored electronically. All of these original maps can be expanded on the screen to enlarge the scale.

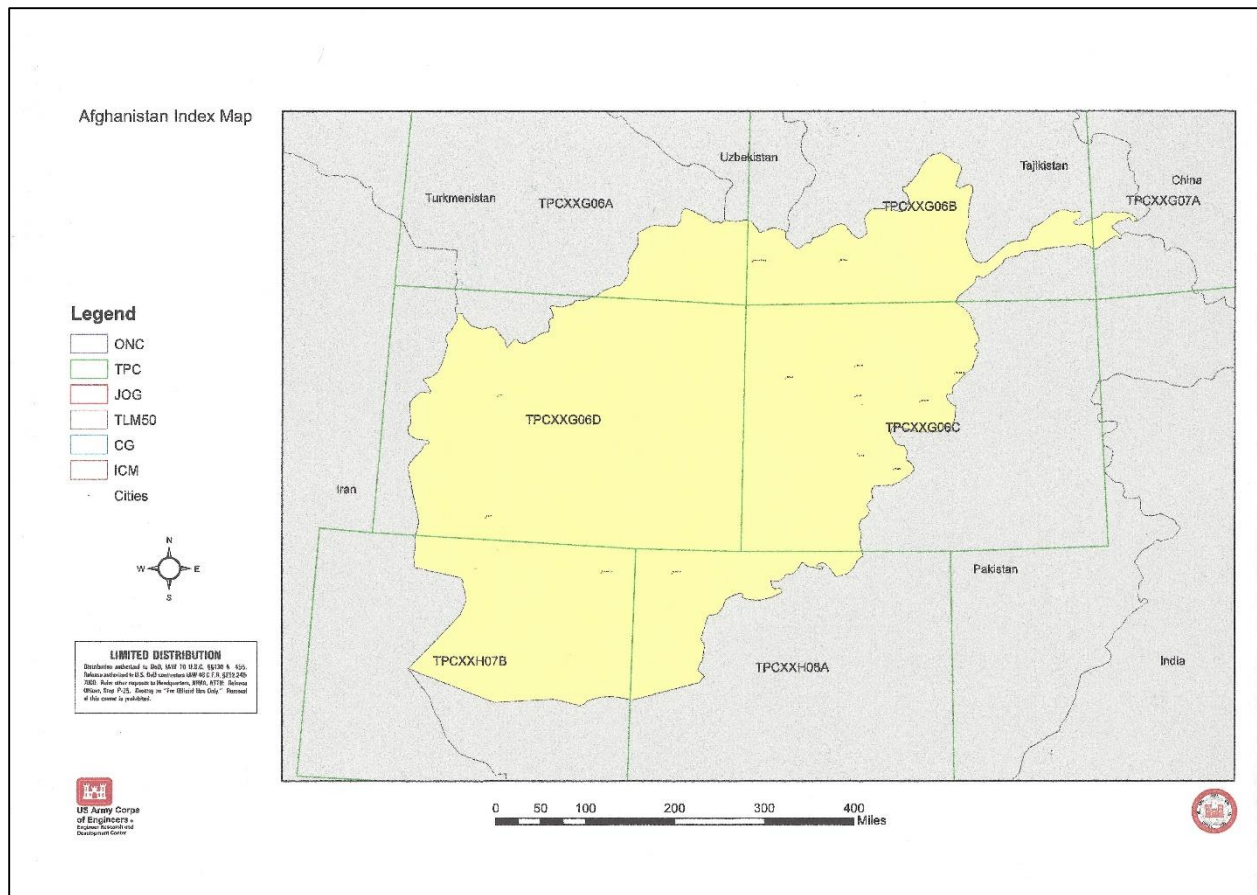


Figure 2. Interactive map (in the original) of Tactical Pilotage Chart (TPC) maps (1:500,000) of the Afghanistan region that are stored electronically. All of these original maps can be expanded on the screen to enlarge the scale.

The JOG map set series of Afghanistan at scales of 1:250,000 is still a bit small scale for any sort of detailed work, but because only about 65 maps cover the entire region (Table 3, Appendix B), they are useful for working out better understandings of regional relationships. The index map (Figure 3) shows 64 maps available on the USACE disk that cover Afghanistan, as well as one additional to the south in Baluchistan, Pakistan. In fact, however, in terms of modern transportation and important new strategic developments in the region, an additional 6 JOG maps are also available that span the borders between Iran and Baluchistan, Pakistan, from southwestern Afghanistan all the way south to the Indian Ocean coast where the new Chinese-built port city of Gwadar exists.

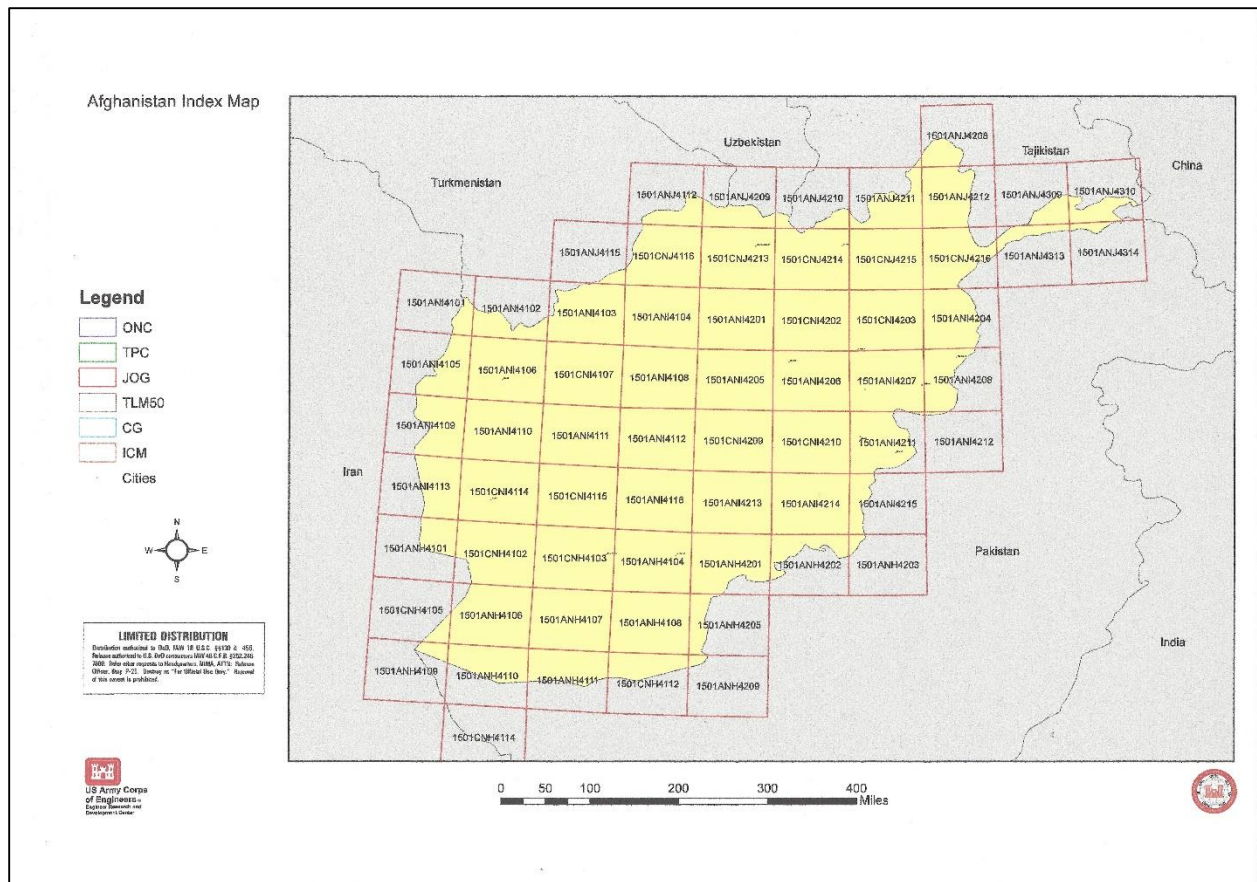


Figure 3. Interactive map (in the original) of Joint Operations Graphic (JOG) maps (1:250,000) of the Afghanistan region that are stored electronically. All of these original maps can be expanded on the screen to enlarge the scale.

The TLM(100) map set series of Afghanistan (Table 4, Appendix B; Figure 4) is a collection of 274 topographic line maps covering the entire country that are a valuable asset to understand topography, land use, and population distribution, among other things. Most of these maps were made originally by the Defense Mapping Agency (DMA) from the original aerial photography flown by Fairchild Aerial Surveys in the late 1950s and early 1960s, as well as maps made by the Soviet Union. In recent map revisions we can now see that other NATO partners have been utilized in a number of new map revisions, especially the United Kingdom and The Netherlands in those areas where those countries have been responsible for security in the post-9/11 world.

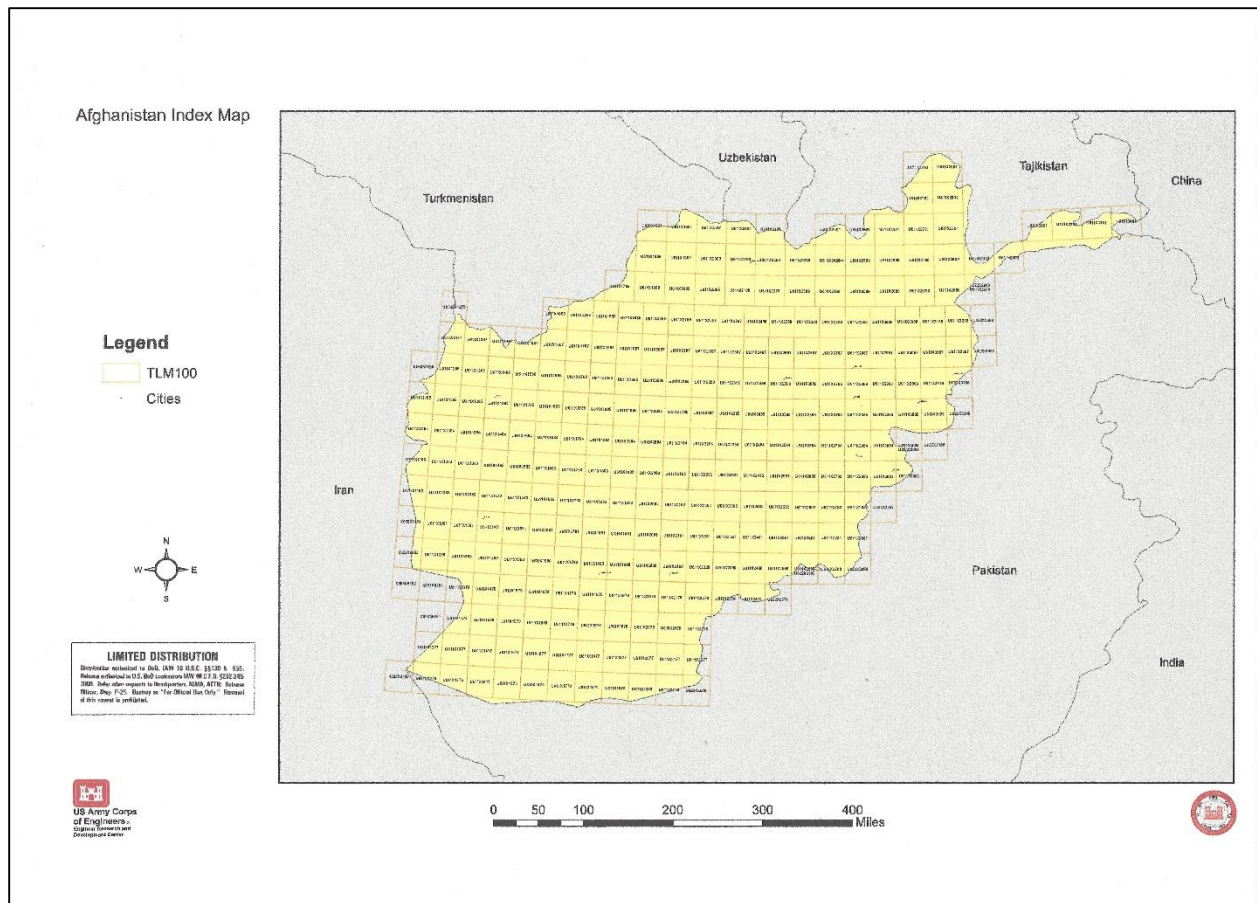


Figure 4. Interactive map (in the original) of Topographic Line Maps (TLM100) (1:100,000) of the Afghanistan region that are stored electronically. All of these original maps can be expanded on the screen to enlarge the scale.

Interestingly enough, most of the large-scale TLM(50) maps at scales of 1:50,000 that have been used recently (post-9/11) are concentrated in the southeast throughout the Pashtun heartland, or at isolated border-crossing points; vintage Soviet maps of that same scale but without significant translation from the Cyrillic lettering have been inserted in the USDOD LIMDIS series from northeast to southwest as well. Some of these larger-scale, more detailed maps are concentrated around regions of the most contention, smuggling routes, the Pashtun border areas intensively frequented by Taliban, and such. None of the LIMDIS maps, however, has any information of a recent military significance on it, although certainly the locations of such potential targets as roads, bridges, and certain other constructions on these maps are potentially problematic at these larger scales.

The TLM(50) map set series of Afghanistan (Table 5, Appendix B; Figure 5) is an incomplete collection of large-scale maps that are extraordinarily detailed and especially useful in understanding particulars of village distribution, afforestation, road quality, and other such fine detail. Although at one time in the 1960s, maps at a scale of 1:50,000 were available for most or all of Afghanistan, at the present time not as much coverage seems to have been made available for the whole country. In any case, and whatever the circumstances of map availability, those that were made available by the LIMDIS production of TLM(50) maps is clearly concentrated in the southeast of the country in the heartland of the Pashtun tribes, as well as along the borders of the country with Tajikistan, Uzbekistan, Iran, and Pakistan. These border areas in some cases are very detailed, high quality maps made by USA intelligence sources (DMA/NIMA/NGA, etc.), but in a number of border areas in the eastern Wakhan Corridor or the southwest Chagai Hills areas are old Soviet (General'nyy Shtab or General Staff) map sources that have been used to augment information about trails, roads, smuggling routes, etc. In some cases double overlapping sets of these maps were made available.

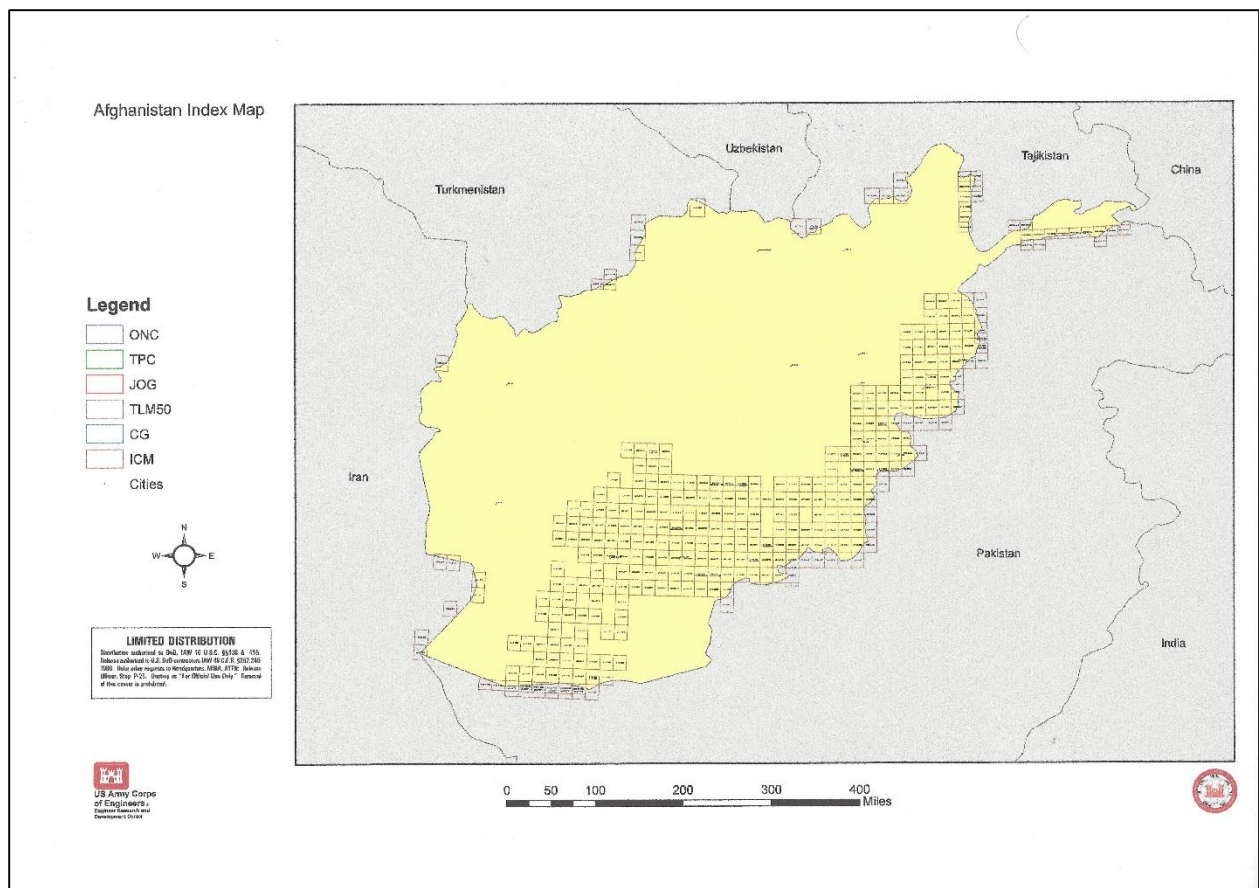


Figure 5. Interactive map (in the original) of Topographic Line Maps (TLM50) (1:50,000) of the Afghanistan region that are stored electronically. All of these original maps can be expanded on the screen to enlarge the scale.

Perhaps because of the hurried nature of electronic map production and indexing by NIMA that got underway in an accelerated fashion in the fall of 2001 following the tragic 9/11 events, a number of mistakes were made with the indexing of the 1:50,000 maps. For example, in one case a map from somewhere in the Soviet Union is inadvertently included in the interactive index (Figure 5), and one of the British-made topographic maps from Hazarajat in central Afghanistan (Kowldom; 1983-3) has in error been mislocated far south into the Chagai Hills. Figure 5, the index map of the TLM(50) maps is not legible at normal page size, but if expanded by a factor of 300 to 500, an option that is easy to perform on the original electronic form, then complete legibility is assured.

The urbanization of Afghanistan has produced a strong need for detailed mapping of the complex and largely unmarked cities and larger towns in Afghanistan. With the common absence of street signs, house address signs, and other common cadastral nomenclature of urban environments, the usefulness, or indeed the necessity in military operations of these maps is obvious. The city graphics (CG) maps were only made for eight of the main cities (Table 6, Appendix B), although one of the cities is in eastern Tajikistan on the Abi Panj River, but the orthophotographs in the image city maps (ICM) provide useful coverage of an additional 16 cities and large towns (Table 6, Appendix B; Figure 6). Additional city and town maps could also be extracted from a number of the 1:50,000-scale topographic maps that would add considerably to the map base about Afghanistan.

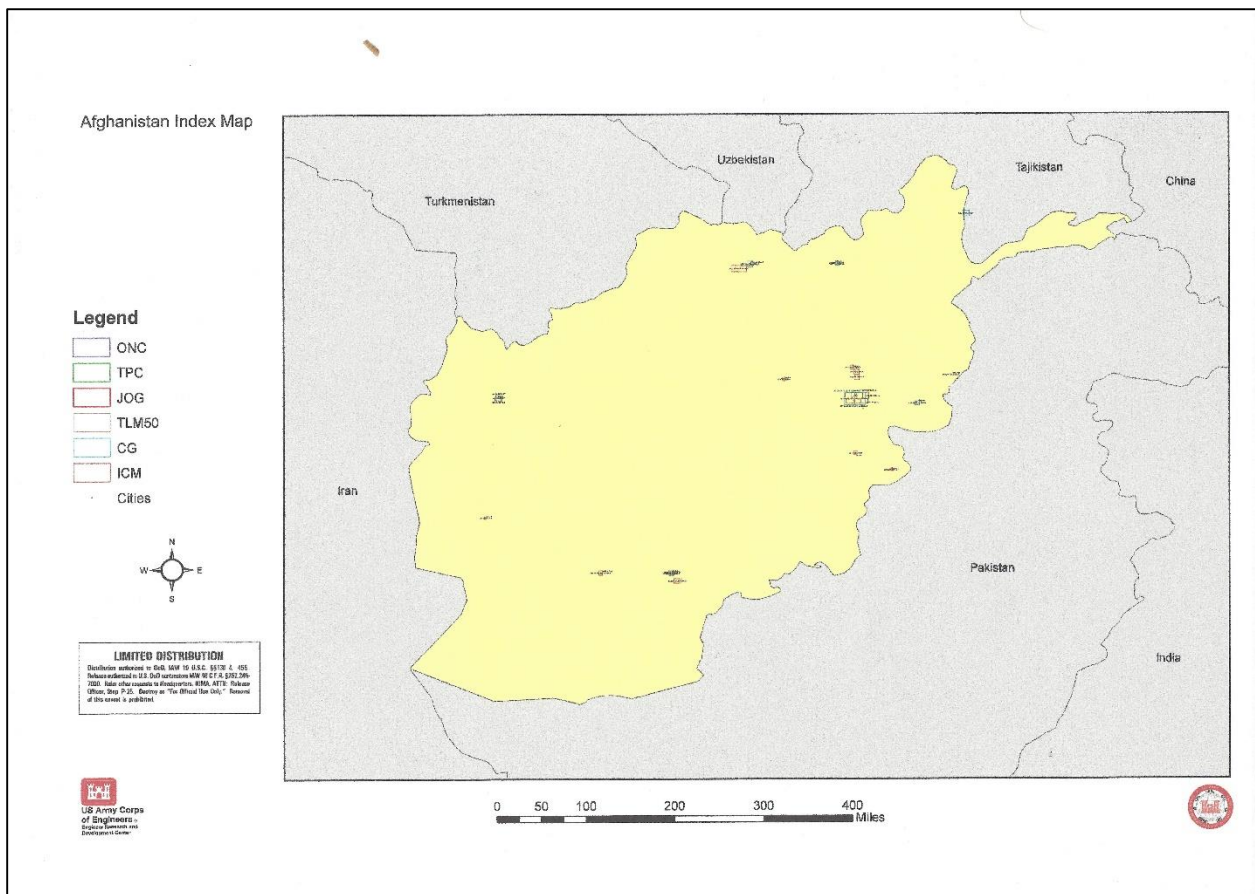


Figure 6. Interactive map (in the original) of City Graphics (CG) and Image City Maps (ICM) at various large scales of the Afghanistan region that are stored electronically. All of these original maps can be expanded on the screen to enlarge the scale.

The inclusion of these new Afghanistan map materials in the NEH implementation grant package definitely augments the initial grant proposal to make available electronically all of the cartographic materials of this NEH project. This prospect, however, does produce one significant dilemma that will need to be adjudicated later by competent authorities. This dilemma occurs in that preserving these map and textual data sources from Afghanistan, including some of the materials from America's longest war, are most important. The result, however, is because of the sensitive nature of the large-scale mapped data and its stamp of LIMDIS, means that we have to restrict access to some of these map materials so as not to violate the terms of our access to these maps.

Using these LIMDIS maps for on-going training of US and NATO military forces and intelligence officers who come to UNO for our Afghanistan Immersion training program is not a problem because of their existing security clearances. Essential to the adequate fighting of war in the difficult terrain of Afghanistan, these maps represent some of the physical intelligence needed for those purposes. An additional factor to consider, however, is that these LIMDIS maps also need to be used in a number of carefully chosen cases for increasing the educational capacity of Afghan college students in Afghanistan. In the present time of post-presidential elections of Afghanistan, as the USA and its NATO allies significantly draw down their levels of force, however, these maps can also represent more benign educational applications for resource assessment and natural-hazard control.

For example, a recent contract award has come to UNO from the Task Force on Business Stability Operations (TFBSO) of the US Department of Defense (DoD) to the Missouri Science and Technology University and the University of Nebraska at Omaha, to upgrade the geological and mining engineering education of students at Kabul Polytechnic University. This award will be greatly facilitated by access to these mapped materials. Together with multiple other cartographic information, such as large-scale maps of geology, topography, and topical data (electricity, transport, etc.), the maps can be used to enable the building or reconstruction of Afghanistan, which would certainly be an excellent beneficial and humanitarian outcome after decades of so much war. Just published by Elsevier is Professor Shroder's new **Natural Resources in Afghanistan** (ISBN: 978-0-12-800135-6), which was produced from this map collection. Also underway by him is a new textbook on **Historical Geology and Resources of**

Afghanistan: A Textbook for Afghan Geoscientists, which will make extensive use of these mapped materials to show sites that will grow into new mining and resource extraction sites in strong need of careful environmental controls to protect fragile and delicate environments.

Because many of these new maps also can include the terrain of neighboring countries, it is possible to use some of them for planning purposes in essential hydroelectric projects, even though good topographic maps by the local government may be unavailable or not allowed to be used. For example, the Chitral-Kunar River flows from Pakistan into Afghanistan. Both countries have realized that low run-of-the-river dams to generate electric power would be highly beneficial, yet levels of bellicosity between the two countries have precluded mutual planning or use of large-scale maps to select and engineer dam sites. Their own maps may also be inadequate or non-existent, whereas the large-scale maps of the USDOD may be quite useful. Because of its long-term good relationships with several universities in both countries, the University of Nebraska at Omaha has been selected to lead discussions between Afghanistan, Pakistan and Tajikistan concerning transboundary water resources. These discussions and planning will be facilitated by access to the LIMDIS transboundary maps, but will have to be handled carefully and used only on a limited and temporary basis.

1.5 Map metadata entry and access in Geonetwork (Open Source) Software:

The need to have electronic access to the Afghanistan map collection necessitates establishment and selection of appropriate metadata and means to inventory and manage access to the diverse collection. Metadata for detailed USDOD maps includes such things as scale, contour interval, ellipsoid, grid, projection, vertical datum, horizontal datum, publisher, magnetic declination, slope guide, boundaries, adjoining sheets, elevation guides, unique identifying numbers, and bar codes, among other attributes.

The open source Geonetwork program has been selected as the best means to accomplish this metadata objective, and the relatively simple procedures to access it are outlined in Table 7 (Appendix B). In general it will take 4-8 hours of work per map to scan a map and proceed through the necessary steps to obtain the metadata and load the electronic copy of the map so that it can be freely accessed and utilized. UNO student Ebrahim Abdul-Sitar from the College of

Information Science and Technology has been hired to load the digitized map examples of section 1.3 listed above.

1.6 Location of electronic resources on Afghanistan:

Although the present locations of the paper maps of Afghanistan are largely in the Arthur Paul Afghanistan Collection (APAC) in the Criss Library at UNO, the electronic servers that host the scanned copies are not yet those of the APAC because of special library requirements for cataloging that could not be met in the terms of this implementation grant. Instead the servers at the College of Information Science and Technology at UNO are being configured to host the Afghanistan map and textual materials on a basis that will still allow external web access. Later transfer into the permanent APAC collection of the library can be accomplished when a technician is hired at a future date for the library to establish the proper cataloging and indexing.

1.7 Map Assessment: Thomas Eighmy and Nigel visit to UNO to evaluate maps

The recent visit in May 2014 by Drs. Eighmy and Allan to look over the collection was quite impressive in terms of the information exchange, the camaraderie expressed by the elderly scholars, and the large quantities of figurative and literal ‘war stories’ that were expressed by all hands. The word “treasure” was used by both scholars of the maps and textual materials several times. The evaluations by Drs. Allan and Eighmy are in the appendices.

1.8 Preservation of map materials at Kabul University and ICIMOD in Kathmandu

Waheed Wafa, Director of the Afghanistan Centre at Kabul University (ACKU) in Afghanistan, and David Molden, Director General of ICIMOD (International Centre for Integrated Mountain Development in Kathmandu, Nepal, have both expressed a desire to provide preservation potential of electronic maps materials of Afghanistan to make them more readily available for use in South Asia.

1.9 Appendices

A. Master list of maps of the Afghanistan map collection. This is the revised and up-dated list of 685 maps begun originally by Shroder’s student Jerry England in 2006 and now more than

tripled in size by additional acquisitions and the comprehensive inventory and clean-up work of Shroder and student Nate Schlagel as a part of this NEH foundation grant PW5145213.

B. Master list of LIMDIS maps of the Afghanistan map collection from the US Army Corps of Engineers obtained in 2014 (Tables 1 – 6).

C. Index maps of LIMDIS maps (Figures 1 – 6).

D. Evaluations of the Afghanistan map and document collection by Drs. Allan and Eighmy.

E. Letters of commitment to preserve the map collection electronically at Kabul University and ICIMOD in Kathmandu, Nepal.

APPENDIX A: MASTER MAP LIST

Map No.	Title	Sheet No.	Author	Publisher	Date	Scale	Description	Size	Subject
Category A: Antiquarian Maps of Afghanistan and Pakistan									
(Maps over past 500 years, originals, copies and reprints)									
1 have	A New Map of the Empire of Persia	0823 (1) 6	D'Anville	Sahab Geographic & Drafting Institute (Iran)	UNK	1:5,400,000	Reprint of a map made in 1794 by D'Anville, English Language, Published by Laurie and Whittle London	48 x 69 cm	Facsimiles of Early Maps on Iran
2 have	Nova Persiae Anatolia et Arabia	0823 (1) 5	F. Dewitt	Sahab Geographic & Drafting Institute (Iran)	UNK	1:5,000,000	Reprint of a map made in 1688 by Frederick Dewit, Latin Language, Published in Amsterdam	48 x 69 cm	Map of Iran Anatolia & Arabia
3 have	Carte de Perse	0823 (1) 8	G. Delisle	Sahab Geographic & Drafting Institute (Iran)	UNK	1 :3,000,000	Reprint of map made in 1724 by G. Delisle, Premier of the Royal Academie of Sciences (Paris, France), French Language	48 x 69 cm	Facsimiles of Early Maps on Iran
4 have	Map of Persia	0823 (1) 4	Iman (Eman) Bowen	Sahab Geographic & Drafting Institute (Iran)	1972	1:3,000,000	Reprint of a map made in 1747 by Iman Bowen, English Language	48 x 69 cm	Map of Iran
5 H	The Kingdome of Persia	0823 (1) 7	John Speede	Sahab Geographic & Drafting Institute (Iran)	UNK	1:4,400,000	Reprint of a map made in 11676 by John Speede, English Language	48 x 69 c	Facsimiles of Early Maps on Iran
6 H	Persia Sive Sophorum Regnum	0823 (1) 9	Theodorus Tholing	Sahab Geographic & Drafting	UNK	1:2,600,000	Reprint of map made in 1634 by Theodoros Tholing, Latin language	48 x 69 cm	Facsimiles of Early Maps on Iran

Map No.	Title	Sheet No.	Author	Publisher	Date	Scale	Description	Size	Subject
				Institute (Iran)					
Category B: Historical Geography Maps of Afghanistan and Pakistan (Maps showing Afghanistan in different time periods)									
7 H	Skeleton Map of Bokhara	0824 (1) 22	UNK	I.B. Topo Dy	1910 01	1:2,027,000		59 x 74 cm	Historical map
8 H	Map of Afghanistan	0824 (1) 12	Gita Shenassi, Iran	Karun	1987	1:1,600,000	Political map with all provinces highlighted by different colors. All features in English and Afghani languages. Specifications for Administrative Divisions include area (square kilometers) and population (1981 estimates). Also contains a small map showing elevations.	69 x 99 cm	Historic political map
9 H	General Map of Afghanistan	0824 (1) 14	UNK	Sahab Geographic & Drafting Institute (Iran)	UNK	1:2,700,000	Tourist Map with a close up of Kabul and a Agriculture, Livestock Breeding and Land Use.	58 x 89 cm	
10 M	Historical Map of Alexander's Eastern Expeditions and Conquests	0823 (1) 12	UNK	Sahab Geographic & Drafting Institute (Iran)	UNK	1:6,250,000	Includes a legend notating historical locations.	71 x 100 cm	Alexander's Eastern Expeditions and Conquests
11 H	Historical Map of Iran Under the Safavid Dynasty in the 16th and 17th Centuries	0823 (1) 10	UNK	Sahab Geographic & Drafting Institute (Iran)	UNK	1:3,000,000	Includes a legend notating historical locations.	70 x 98 cm.	Iran under the Safavids

Map No.	Title	Sheet No.	Author	Publisher	Date	Scale	Description	Size	Subject
12 H	Historical Map of Iran Under the Seljuks (AD 1040-1157)	0823 (1) 11	UNK	Sahab Geographic & Drafting Institute (Iran)	UNK	1:3,000,000	Includes a legend notating historical locations.	70 x 98 cm.	Iran under the Seljuks
13 H	Afghanistan 1980 Strategy	0823 (1) 16	UNK	UNO	UNK	1:7,000,000	Handwritten graphics showing movement of US and Russia in the region	73 x 75 cm.	Azerbaijani Crisis
14 H	Afghanistan in Southwest Asia	0823 (1) 1	UNK	UNO	197703	1:7,000,000	Handwritten outline of Iran and Afghanistan provinces	75 x 102 cm	
15 H	Afghanistan in Southwest Asia	0823 (1) 13	UNK	UNO	197703	1:7,000,000	Handwritten outline of Iran and Afghanistan provinces 1747 to 1818	75 x 102 cm	
16 H	Afghanistan in Southwest Asia	0823 (1) 2	UNK	UNO	197703	1:7,000,000	Handwritten outline of Iran and Afghanistan provinces from the Nineteenth and Twentieth Centuries	75 x 102 cm	Afghanistan in Southwest Asia Nineteenth and Twentieth Centuries
17 H	Afghanistan in Southwest Asia	0823 (1) 3	UNK	UNO	197703	1:7,000,000	Handwritten outline of Iran and Afghanistan provinces from the Eighteenth Century	75 x 102 cm	Afghanistan in Southwest Asia Eighteenth Century
18 H	Azerbaijan Crisis 1946	0823 (1) 14	UNK	UNO	UNK	1:7,000,000	Handwritten graphics showing movement of Britain and Russia in the region	58 x 73 cm	Azerbaijani Crisis
19 H	US Containment Policy 1948 - 1978	0823 (1) 15	UNK	UNO	UNK	1:7,000,000	Handwritten graphics showing movement of Britain and Russia in the region	58 x 73 cm	US Containment Policy
20	New Map of Afghanistan	0824 (1) 5	UNK	Sahab Geographic	UNK	1:1,000,000	Physical and Political	98 x 120 cm	

Map No.	Title	Sheet No.	Author	Publisher	Date	Scale	Description	Size	Subject
M	Physical, Political, Administrative Divisions Road & Distances			& Drafting Institute (Iran)					
21 H	Map showing the position of the Pathan Tribes	0830 (1) 64	UNK	I.B. Topo. Dy. Exd. C.J.A	1910	1:6,000,000	Shows boundaries between tribes in 1910 near Northwest Frontier Province.	56 x 31 cm	Historic tribal/ethnic map
22 H	MSF Map		UNK	UNK	1982		Maps carried by Medecin sans Frontieres (Doctors without Borders) to Afghanistan in 1982. Five pieces.		Historical map
23 H	Guide Map of Afghanistan Hotels		M. Serwer	Hotel Corporation Kabul	1968	1:1,750,000	Shows location of hotels, roads, lakes, as well as room and bed numbers for hotels. Fragile: in own folder.		Historical
Category C: Topographic Maps of Afghanistan during the 1950-1980's, Cold War Era mapping phase by USA Multiple scales (1:50,000, 1:100,000, 1:250,000) and incomplete to complete coverage. DOD / JOG series and Fairchild Aerial Survey maps published by the Ministry of Mines and Afghan Cartographic Institute.									
24 M	Alaqadari Sahjoy	2482		1-TCP	1968	1:100,000	Topographic map with points of interest. Series U611.		
25 M	Hokumate Sinkay	2480		1-TCP	1969	1:100,000	Topographic map with points of interest. Series U611.		
26 M	Khugyani	2380		1-TCP	1969	1:100,000	Topographic map with points of interest. Series U611.		
27 M	Oruzgan	2382		1-TCP	1969	1:100,000	Topographic map with points of interest. Series U611.		

Map No.	Title	Sheet No.	Author	Publisher	Date	Scale	Description	Size	Subject
28 M	Qalat	2381		1-TCP	1969	1:100,000	Topographic map with points of interest. Series U611.		
29 M	Qarabaghi	2481		1-TCP	1969	1:100,000	Topographic map with points of interest. Series U611.		
30 M	Zarin Khel	2581		1-TCP	1969	1:100,000	Topographic map with points of interest. Series U611.		
31 M	Caharikar	504 E III	Fairchild Aerial Survey	Ministry of Mines and Industry Royal Government of Afghanistan	1958-1959	1:50,000	Photocopy of first edition on light trace paper. Includes glossary, legend, and adjoining sheets index. Series U711.		Topographic map
32 M	Gulbahar, Afghanistan	504 E IV	Fairchild Aerial Survey	Ministry of Mines and Industry Royal Government of Afghanistan	1957-1959	1:50,000	Photocopy of first edition on light trace paper. Includes glossary, legend, and adjoining sheets index. Series U711.		Topographic map
33 M	Gholam' Ali	510 A I	Fairchild Aerial Survey	Ministry of Mines and Industry Royal Government of Afghanistan	1958-1959	1:50,000	Photocopy of first edition on light trace paper. Includes glossary, legend, and adjoining sheets index. Series U711.		Topographic map

Map No.	Title	Sheet No.	Author	Publisher	Date	Scale	Description	Size	Subject
34 M	Kohe Safi	510 A II	Fairchild Aerial Survey	Ministry of Mines and Industry Royal Government of Afghanistan	1958- 1959	1:50,000	Photocopy of first edition on light trace paper. Includes glossary, legend, and adjoining sheets index. Series U711.		Topographic map
35 M	Mirbaca Kot (Saray- Khwaja)	510 A III	Fairchild Aerial Survey	Ministry of Mines and Industry Royal Government of Afghanistan	1958- 1959	1:50,000	Photocopy of first edition on light trace paper. Includes glossary, legend, and adjoining sheets index. Series U711.		Topographic map
36 M	Paca Khak (Kohe Safi)	510 A IV	Fairchild Aerial Survey	Ministry of Mines and Industry Royal Government of Afghanistan	1957- 1959	1:50,000	Photocopy of first edition on light trace paper. Includes glossary, legend, and adjoining sheets index. Series U711.		Topographic map
37 M	Kabul	510 C I	Fairchild Aerial Survey	Ministry of Mines and Industry Royal Government of Afghanistan	1965	1:50,000	Photocopy of first edition on light trace paper. Includes glossary, legend, and adjoining sheets index. Series U711.		Topographic map
38 M	Pule Carkhi	510 C II	Fairchild Aerial Survey	Ministry of Mines and Industry Royal Government	1965	1:50,000	Photocopy of first edition on light trace paper. Includes glossary, legend, and adjoining sheets index. Series U711.		Topographic map

Map No.	Title	Sheet No.	Author	Publisher	Date	Scale	Description	Size	Subject
				of Afghanistan					
39 M	Afghanistan	117 F			1960	1:100,000	Partial photocopy.		Topographic map
40 M	Afghanistan	118 D			1960	1:100,000	Partial photocopy.		Topographic map
41 M	Afghanistan	118 E			1960	1:100,000	Partial photocopy.		Topographic map
42 M	Afghanistan	118 F			1960	1:100,000	Partial photocopy.		Topographic map
43 M	Afghanistan	122 F			1960	1:100,000	Partial photocopy.		Topographic map
44 M	Afghanistan	123 B			1960	1:100,000	Partial photocopy.		Topographic map
45 H	Char Shango	123 D	Fairchild Aerial Survey	Afghan Cartography Institute	1960	1:100,000			Topographic map
46 M	Afghanistan	123 E			1960	1:100,000	Partial photocopy.		Topographic map
47 M	Afghanistan	123 F			1960	1:100,000	Partial photocopy.		Topographic map
48	Afghanistan	124 A			1960	1:100,000	Partial photocopy.		Topographic map

Map No.	Title	Sheet No.	Author	Publisher	Date	Scale	Description	Size	Subject
M									
49 H	Khwaja Do Koh	124 B	Fairchild Aerial Survey	Afghan Cartography Institute	1960	1:100,000			Topographic map
50 H	Khwaja Mod	124 C	Fairchild Aerial Survey	Afghan Cartography Institute	1960	1:100,000			Topographic map
51 H	Sheberghan	124 D	Fairchild Aerial Survey	Afghan Cartography Institute	1960	1:100,000			Topographic map
52 H	Afghanistan	124 E			1960	1:100,000	Partial photocopy.		Topographic map
53 H	Afghanistan	124 F			1960	1:100,000	Partial photocopy.		Topographic map
54 H	Mah-I-Naw	211 D	Fairchild Aerial Survey	Afghan Cartography Institute	1960	1:100,000			Topographic map
55 H	May Mayk	211 F	Fairchild Aerial Survey	Afghan Cartography Institute	1960	1:100,000			Topographic map
56 H	May May	212 C	Fairchild Aerial Survey	Afghan Cartography Institute	1960	1:100,000			Topographic map
57 H	Jamarj-I-Bala	212 E	Fairchild Aerial Survey	Afghan Cartography Institute	1960	1:100,000			Topographic map

Map No.	Title	Sheet No.	Author	Publisher	Date	Scale	Description	Size	Subject
58 H	Char-I-Ab	216 D	Fairchild Aerial Survey	Afghan Cartography Institute	1960	1:100,000			Topographic map
59 H	Rustaq	216 F	Fairchild Aerial Survey	Afghan Cartography Institute	1960	1:100,000			Topographic map
60 H	Sang Ab	217 A	Fairchild Aerial Survey	Afghan Cartography Institute	1960	1:100,000			Topographic map
61 H	Shkaro	217 B	Fairchild Aerial Survey	Afghan Cartography Institute	1960	1:100,000			Topographic map
62 H	Shengan	217 C	Fairchild Aerial Survey	Afghan Cartography Institute	1960	1:100,000			Topographic map
63 H	Qala-I- Mirza Shah	217 D	Fairchild Aerial Survey	Afghan Cartography Institute	1960	1:100,000			Topographic map
64 H	Kakan	217 E	Fairchild Aerial Survey	Afghan Cartography Institute	1960	1:100,000			Topographic map
65 H	Faydz Abad	217 F	Fairchild Aerial Survey	Afghan Cartography Institute	1960	1:100,000			Topographic map
66 H	Pajwar	218 A	Fairchild Aerial Survey	Afghan Cartography Institute	1960	1:100,000			Topographic map

Map No.	Title	Sheet No.	Author	Publisher	Date	Scale	Description	Size	Subject
67 H	Suduj	218 B	Fairchild Aerial Survey	Afghan Cartography Institute	1960	1:100,000			Topographic map
68 H	Arakht	218 C	Fairchild Aerial Survey	Afghan Cartography Institute	1960	1:100,000			Topographic map
69 H	Parkhaw	218 E	Fairchild Aerial Survey	Afghan Cartography Institute	1960	1:100,000			Topographic map
70 H	Sar-I-Asya	219 D	Fairchild Aerial Survey	Afghan Cartography Institute	1960	1:100,000			Topographic map
71 H	Aq Kupruk	219 F	Fairchild Aerial Survey	Afghan Cartography Institute	1960	1:100,000			Topographic map
72 H	Mazar-i- Sharif	220 A	Fairchild Aerial Survey	Afghan Cartography Institute	1960	1:100,000			Topographic map
73 H	Marmol	220 C	Fairchild Aerial Survey	Afghan Cartography Institute	1960	1:100,000			Topographic map
74 H	Aybak	221 E	Fairchild Aerial Survey	Afghan Cartography Institute	1960	1:100,000			Topographic map
75 H	Baghlan	221 F	Fairchild Aerial Survey	Afghan Cartography Institute	1960	1:100,000			Topographic map

Map No.	Title	Sheet No.	Author	Publisher	Date	Scale	Description	Size	Subject
76 H	Farkhar	222 D	Fairchild Aerial Survey	Afghan Cartography Institute	1960	1:100,000			Topographic map
77 H	Nahrin (Nahr, Afghanistan)	222 E	Fairchild Aerial Survey	Ministry of Mines and Industry Royal Government of Afghanistan	1960	1:100,000			Topographic map
78 H	Khosto-Fereng	222 F	Fairchild Aerial Survey	Ministry of Mines and Industry Royal Government of Afghanistan	1960	1:100,000			Topographic map
79 H	Keshem	223 A	Fairchild Aerial Survey	Afghan Cartography Institute	1960	1:100,000			Topographic map
80 H	Jarm	223 B	Fairchild Aerial Survey	Afghan Cartography Institute	1960	1:100,000			Topographic map
81 H	Khumbuk	223 C	Fairchild Aerial Survey	Ministry of Mines and Industry Royal Government of Afghanistan	1960	1:100,000			Topographic map

Map No.	Title	Sheet No.	Author	Publisher	Date	Scale	Description	Size	Subject
82 H	Eskan	223 D	Fairchild Aerial Survey	Ministry of Mines and Industry Royal Government of Afghanistan	1960	1:100,000			Topographic map
83 H	Tagabe Qawandur	223 E	Fairchild Aerial Survey	Ministry of Mines and Industry Royal Government of Afghanistan	1960	1:100,000			Topographic map
84 H	Korano-Munjan	223 F	Fairchild Aerial Survey	Ministry of Mines and Industry Royal Government of Afghanistan	1960	1:100,000			Topographic map
85 H	Tergeran	224 A	Fairchild Aerial Survey	Afghan Cartography Institute	1960	1:100,000			Topographic map
86 H	Qadzi Deh	224 B	Fairchild Aerial Survey	Afghan Cartography Institute	1960	1:100,000			Topographic map
87 H	Zebak	224 C	Fairchild Aerial Survey	Afghan Cartography Institute	1960	1:100,000			Topographic map

Map No.	Title	Sheet No.	Author	Publisher	Date	Scale	Description	Size	Subject
88 H	Ucdrag	224 D	Fairchild Aerial Survey	Afghan Cartography Institute	1960	1:100,000			Topographic map
89 H	Dr Sanglich	224 E	Fairchild Aerial Survey	Ministry of Mines and Industry, Royal Government of Afghanistan	1960	1:100,000			Topographic map
90 H	Gaz Khan	313 F	Fairchild Aerial Survey	Afghan Cartography Institute	1960	1:100,000			Topographic map
91 H	Chakan Kul	314 C	Fairchild Aerial Survey	Afghan Cartography Institute	1960	1:100,000			Topographic map
92 H	Kol-I-Zor Kol	314 D	Fairchild Aerial Survey	Afghan Cartography Institute	1960	1:100,000			Topographic map
93 H	Afghanistan	314 E	Fairchild Aerial Survey		1960	1:100,000	Partial photocopy.	44 x 56 cm	Topographic map
94 H	Langar	314 F	Fairchild Aerial Survey	Afghan Cartography Institute	1960	1:100,000			Topographic map
95 H	Tash Seri	315 C	Fairchild Aerial Survey	Afghan Cartography Institute	1960	1:100,000			Topographic map

Map No.	Title	Sheet No.	Author	Publisher	Date	Scale	Description	Size	Subject
96 H	Kol-I-Karasu	315 D	Fairchild Aerial Survey	Afghan Cartography Institute	1960	1:100,000			Topographic map
97 H	Kol-I-Chaqmaqin	315 E	Fairchild Aerial Survey	Afghan Cartography Institute	1960	1:100,000			Topographic map
98 H	Darya-I-Teger Mensu	315 F	Fairchild Aerial Survey	Afghan Cartography Institute	1960	1:100,000			Topographic map
99 H	Khandud	319 A - 313 E	Fairchild Aerial Survey	Afghan Cartography Institute	1960	1:100,000			Topographic map
100 H	Sust	319 B	Fairchild Aerial Survey	Afghan Cartography Institute	1960	1:100,000			Topographic map
101 H	Deh Ghulaman	320 A	Fairchild Aerial Survey	Afghan Cartography Institute	1960	1:100,000			Topographic map
102 H	Zemestani Pasa	320 B	Fairchild Aerial Survey	Afghan Cartography Institute	1960	1:100,000			Topographic map
103 H	ertefa 5992,0	321 A	Fairchild Aerial Survey	Afghan Cartography Institute	1960	1:100,000			Topographic map
104 H	Afghanistan	404 D			1960	1:100,000			Topographic map
105 H	Qaysar	405 A	Fairchild Aerial Survey	Afghan Cartography Institute	1960	1:100,000			Topographic map

Map No.	Title	Sheet No.	Author	Publisher	Date	Scale	Description	Size	Subject
106 H	Afghanistan	405 B			1960	1:100,000	Partial photocopy.		Topographic map
107 H	Ghuri	405 C	Fairchild Aerial Survey	Afghan Cartography Institute	1960	1:100,000			Topographic map
108 M	Afghanistan	405 D			1960	1:100,000	Partial photocopy.		Topographic map
109 M	Afghanistan	406 A			1960	1:100,000	Partial photocopy.		Topographic map
110 H	Dr Khawak	504 B	Fairchild Aerial Survey	Ministry of Mines and Industry Royal Government of Afghanistan	1960	1:100,000			Topographic map
111 H	Banu	504 C	Fairchild Aerial Survey	Ministry of Mines and Industry Royal Government of Afghanistan	1960	1:100,000			Topographic map
112 H	Astana	504 D	Fairchild Aerial Survey	Ministry of Mines and Industry Royal Government	1960	1:100,000			Topographic map

Map No.	Title	Sheet No.	Author	Publisher	Date	Scale	Description	Size	Subject
				of Afghanistan					
113 H	Gulbahar	504 E	Fairchild Aerial Survey	Ministry of Mines and Industry Royal Government of Afghanistan	1960	1:100,000			Topographic map
114 H	Anjoman	505 A	Fairchild Aerial Survey	Ministry of Mines and Industry Royal Government of Afghanistan	1960	1:100,000			Topographic map
115 H	Pushal	505 C	Fairchild Aerial Survey	Ministry of Mines and Industry Royal Government of Afghanistan	1960	1:100,000			Topographic map
116 H	Dr Kolum	505 E	Fairchild Aerial Survey	Ministry of Mines and Industry Royal Government of Afghanistan	1960	1:100,000			Topographic map

Map No.	Title	Sheet No.	Author	Publisher	Date	Scale	Description	Size	Subject
117 H	Waygal	505 F	Fairchild Aerial Survey	Ministry of Mines and Industry Royal Government of Afghanistan	1960	1:100,000			Topographic map
118 H	Barge Matal	506 A	Fairchild Aerial Survey	Ministry of Mines and Industry Royal Government of Afghanistan	1960	1:100,000			Topographic map
119 H	Podagosht	506 B	Fairchild Aerial Survey	Ministry of Mines and Industry Royal Government of Afghanistan	1960	1:100,000			Topographic map
120 H	Kamdesh	506 C	Fairchild Aerial Survey	Ministry of Mines and Industry Royal Government of Afghanistan	1960	1:100,000			Topographic map
121 H	Pitigal	506 D	Fairchild Aerial Survey	Ministry of Mines and Industry Royal Government	1960	1:100,000			Topographic map

Map No.	Title	Sheet No.	Author	Publisher	Date	Scale	Description	Size	Subject
				of Afghanistan					
122 H	Asmar	506 E	Fairchild Aerial Survey	Ministry of Mines and Industry Royal Government of Afghanistan	1960	1:100,000			Topographic map
123 H	Barikot	506 F	Fairchild Aerial Survey	Ministry of Mines and Industry Royal Government of Afghanistan	1960	1:100,000			Topographic map
124 H	Qarabagh- Gholam' Ali	510 A	Fairchild Aerial Survey	Ministry of Mines and Industry Royal Government of Afghanistan	1960	1:100,000			Topographic map
125 H	Kabul	510 C	Fairchild Aerial Survey	Ministry of Mines and Industry Royal Government of Afghanistan	1960	1:100,000			Topographic map

Map No.	Title	Sheet No.	Author	Publisher	Date	Scale	Description	Size	Subject
126 H	Alishang-Alingar	511 A	Fairchild Aerial Survey	Ministry of Mines and Industry Royal Government of Afghanistan	1960	1:100,000			Topographic map
127 H	Cawkae	511 B	Fairchild Aerial Survey	Ministry of Mines and Industry Royal Government of Afghanistan	1960	1:100,000			Topographic map
128 H	Chaghasara y	512 A	Fairchild Aerial Survey	Ministry of Mines and Industry Royal Government of Afghanistan	1960	1:100,000			Topographic map
129 M	Hamune Saberi, Afghanistan	602C	Fairchild Aerial Survey		Sept. 1957 to Oct. 1959	1:100,000			Topographic map
130 M	Darg, Afghanistan	602D	Fairchild Aerial Survey		Sept. 1957 to Oct. 1959	1:100,000			Topographic map

Map No.	Title	Sheet No.	Author	Publisher	Date	Scale	Description	Size	Subject
131 M	Rode Mamal Sar, Afghanistan	603A	Fairchild Aerial Survey		Sept. 1957 to Oct. Dec. 1959	1:100,000			Topographic map
132 M	Kadah, Afghanistan	603C	Fairchild Aerial Survey		Sept. 1957 to Oct. Dec. 1959	1:100,000			Topographic map
133 M	Chakhansur, Afghanistan	603E	Fairchild Aerial Survey		Sept. 1957 to Oct. Dec.1959	1:100,000			Topographic map
134 M	Dashte Toba, Afghanistan	608 E	Fairchild Aerial Survey		Oct. 1957 to Oct. Dec. 1959	1:100,000			Topographic map
135 M	Bandar, Afghanistan	608F	Fairchild Aerial Survey		Sept. Oct. 1957 to Oct. Dec.1959	1:100,000			Topographic map
136 M	Chahar Burjak, Afghanistan	609E	Fairchild Aerial Survey		Sept. 1957 to Dec. 1959	1:100,000			Topographic map
137 M	Palalak, Afghanistan	609F	Fairchild Aerial Survey		Sept. 1957 to Dec. 1959	1:100,000			Topographic map

Map No.	Title	Sheet No.	Author	Publisher	Date	Scale	Description	Size	Subject
138 M	Taghaz, Afghanistan	610C	Fairchild Aerial Survey		Sept. 1957 to Dec. 1959	1:100,000			Topographic map
139 M	Qal'a-I- Naw, Afghanistan	610D	Fairchild Aerial Survey		Sept1957 to Nov/Dec. 1959	1:100,000			Topographic map
140 M	Khawaja 'Ali, Afghanistan	610E	Fairchild Aerial Survey		Sept. 1957 to Dec. 1959	1:100,000			Topographic map
141 M	Kashi Dasht, Afghanistan	610F	Fairchild Aerial Survey		Sept. 1957 to Nov. Dec. 1959	1:100,000			Topographic map
142 M	Gozare Shah, Afghanistan	614A	Fairchild Aerial Survey		Oct. 1957 to Oct. Dec. 1959	1:100,000			Topographic map
143 M	Gawdezereh , Afghanistan	614B	Fairchild Aerial Survey		Sept. Oct. 1957 to Oct. Dec. 1959	1:100,000			Topographic map
144 M	Shora -I- Hamun, Afghanistan	615A	Fairchild Aerial Survey		Sept. 1957 to Dec. 1959	1:100,000			Topographic map

Map No.	Title	Sheet No.	Author	Publisher	Date	Scale	Description	Size	Subject
145 M	Regestane Saychan, Afghanistan	615B	Fairchild Aerial Survey		Sept. 1957 to Dec. 1959	1:100,000			Topographic map
146 H	Jalajin, Afghanistan	117	Fairchild Aerial Survey	Afghan Cartographic Institute	1959	1:250,000	Complete photocopy. Includes Index.		Topographic map
147 H	Kham Ab, Afghanistan	118	Fairchild Aerial Survey	Afghan Cartographic Institute	1959	1:250,000	Complete photocopy. Includes Index.		Topographic map
148 H	Darrah-I-Sor-I-Karamandi, Afghanistan	122	Fairchild Aerial Survey	Afghan Cartographic Institute	1960	1:250,000	Complete photocopy. Includes Index.		Topographic map
149 H	Char Shangho, Afghanistan	123	Fairchild Aerial Survey	Afghan Cartographic Institute	1959	1:250,000	Complete photocopy. Includes Index.		Topographic map
150 H	Sheberghan, Afghanistan	124	Fairchild Aerial Survey	Afghan Cartographic Institute	1959	1:250,000	Complete photocopy. Includes Index.		Topographic map
151 H	May Mayk, Afghanistan	211	Fairchild Aerial Survey	Afghan Cartographic Institute	1960	1:250,000	Complete photocopy. Includes Index.		Topographic map
152 H	Jamarj-I-Bala, Afghanistan	212	Fairchild Aerial Survey	Afghan Cartographic Institute	1960	1:250,000	Complete photocopy. Includes Index.		Topographic map
153 H	Qarqin, Afghanistan	213	Fairchild Aerial Survey	Afghan Cartographic Institute	1959	1:250,000	Complete photocopy. Includes Index.		Topographic map

Map No.	Title	Sheet No.	Author	Publisher	Date	Scale	Description	Size	Subject
154 H	Hazara Toghai, Afghanistan	214	Fairchild Aerial Survey	Afghan Cartographic Institute	1959	1:250,000	Complete photocopy. Includes Index.		Topographic map
155 H	Imam Saheb, Afghanistan	215	Fairchild Aerial Survey	Afghan Cartographic Institute	1960	1:250,000	Complete photocopy. Includes Index.		Topographic map
156 H	Rustaq, Afghanistan	216	Fairchild Aerial Survey	Afghan Cartographic Institute	1960	1:250,000	Complete photocopy. Includes Index.		Topographic map
157 H	Faydz Abad, Afghanistan	217	Fairchild Aerial Survey	Afghan Cartographic Institute	1960	1:250,000	Complete photocopy. Includes Index.		Topographic map
158 H	Parkhaw, Afghanistan	218	Fairchild Aerial Survey	Afghan Cartographic Institute	1960	1:250,000	Complete photocopy. Includes Index.		Topographic map
159 H	Balkh, Afghanistan	219	Fairchild Aerial Survey	Afghan Cartographic Institute	1959	1:250,000	Complete photocopy. Includes Index.		Topographic map
160 H	Mazar-I-Sharif, Afghanistan	220	Fairchild Aerial Survey	Afghan Cartographic Institute	1959	1:250,000	Complete photocopy. Includes Index.		Topographic map
161 H	Baghlan, Afghanistan	221	Fairchild Aerial Survey	Afghan Cartographic Institute	1960	1:250,000	Complete photocopy. Includes Index.		Topographic map
162 H	Taloqan, Afghanistan	222	Fairchild Aerial Survey	Ministry of Mines and Industry Royal Government	UNK	1:250,000	Incomplete Photocopy. Complete land coverage; map missing Index, Glossary and Legend.		Topographic map

Map No.	Title	Sheet No.	Author	Publisher	Date	Scale	Description	Size	Subject
				of Afghanistan					
163 H	Jurm- Kesem, Afghanistan	223	Fairchild Aerial Survey	Ministry of Mines and Industry Royal Government of Afghanistan	UNK	1:250,000	Incomplete Photocopy. Complete land coverage; map missing Index, Glossary and Legend.		Topographic map
164 H	Zebak, Afghanistan	224	Fairchild Aerial Survey	Ministry of Mines and Industry Royal Government of Afghanistan	UNK	1:250,000	Incomplete Photocopy. Complete land coverage; map missing Index, Glossary and Legend.		Topographic map
165 H	Gaz Khan, Afghanistan	313	Fairchild Aerial Survey	Afghan Cartographic Institute	1960	1:250,000	Complete photocopy. Includes Index.		Topographic map
166 H	Sarhad, Afghanistan	314	Fairchild Aerial Survey	Afghan Cartographic Institute	1960	1:250,000	Complete photocopy. Includes Index.		Topographic map
167 H	Kol-I- Caqmaqin, Afghanistan	315	Fairchild Aerial Survey	Afghan Cartographic Institute	1960	1:250,000	Complete photocopy. Includes Index.		Topographic map
168 H	Khandud, Afghanistan	319	Fairchild Aerial Survey	Afghan Cartographic Institute	1960	1:250,000	Complete photocopy. Includes Index.		Topographic map
169 H	Deh Ghulaman, Afghanistan	320	Fairchild Aerial Survey	Afghan Cartographic Institute	1960	1:250,000	Complete photocopy. Includes Index.		Topographic map

Map No.	Title	Sheet No.	Author	Publisher	Date	Scale	Description	Size	Subject
170 H	ertefa' 5992	321	Fairchild Aerial Survey	Afghan Cartographic Institute	1960	1:250,000	Complete photocopy. Includes Index.		Topographic map
171 H	Sir Band, Afghanistan	402	Fairchild Aerial Survey	Afghan Cartographic Institute	1960	1:250,000	Complete photocopy. Includes Index.		Topographic map
172 H	Khwaja Jir, Afghanistan	403	Fairchild Aerial Survey	Afghan Cartographic Institute	1960	1:250,000	Complete photocopy. Includes Index.		Topographic map
173 H	Bala Murghab, Afghanistan	404	Fairchild Aerial Survey	Afghan Cartographic Institute	1960	1:250,000	Complete photocopy. Includes Index.		Topographic map
174 H	Cahartaq (Joand), Afghanistan	405	Fairchild Aerial Survey	Ministry of Mines and Industry Royal Government of Afghanistan	UNK	1:250,000	Incomplete Photocopy. Complete land coverage; map missing Index, Glossary and Legend.		Topographic map
175 H	Gurziwan, Afghanistan	406	Fairchild Aerial Survey	Ministry of Mines and Industry Royal Government of Afghanistan	1967	1:250,000	Incomplete Photocopy. Complete land coverage; map missing Index, Glossary and Legend.		Topographic map
176 H	Kol-I-Namaksar, Afghanistan	407	Fairchild Aerial Survey	Afghan Cartographic Institute	1960	1:250,000	Complete photocopy. Includes Index.		Topographic map

Map No.	Title	Sheet No.	Author	Publisher	Date	Scale	Description	Size	Subject
177 H	Ghuryan, Afghanistan	408	Fairchild Aerial Survey	Afghan Cartographic Institute	1960	1:250,000	Complete photocopy. Includes Index.		Topographic map
178 H	Herat, Afghanistan	409	Fairchild Aerial Survey	Afghan Cartographic Institute	1960	1:250,000	Complete photocopy. Includes Index.		Topographic map
179 H	Ceste Sarif, Afghanistan	410	Fairchild Aerial Survey	Ministry of Mines and Industry Royal Government of Afghanistan	1967	1:250,000	Incomplete Photocopy. Complete land coverage; map missing Index, Glossary and Legend.		Topographic map
180 H	Sahrak, Afghanistan	411	Fairchild Aerial Survey	Ministry of Mines and Industry Royal Government of Afghanistan	1967	1:250,000	Incomplete Photocopy. Complete land coverage; map missing Index, Glossary and Legend.		Topographic map
181 H	Kasi, Afghanistan	412	Fairchild Aerial Survey	Ministry of Mines and Industry Royal Government of Afghanistan	1967	1:250,000	Incomplete Photocopy. Complete land coverage; map missing Index, Glossary and Legend.		Topographic map
182 H	Kalata-I- Nazarkhan, Afghanistan	413	Fairchild Aerial Survey	Ministry of Mines and Industry Royal Government	1967	1:250,000	Incomplete Photocopy. Complete land coverage; map missing Index, Glossary and Legend.		Topographic map

Map No.	Title	Sheet No.	Author	Publisher	Date	Scale	Description	Size	Subject
				of Afghanistan					
183 H	Kohe mahmudo Esma'iljan, Afghanistan	414	Fairchild Aerial Survey	Ministry of Mines and Industry Royal Government of Afghanistan	1967	1:250,000	Incomplete Photocopy. Complete land coverage; map missing Index, Glossary and Legend.		Topographic map
184 H	Sin-Dand, Afghanistan	415	Fairchild Aerial Survey	Ministry of Mines and Industry Royal Government of Afghanistan	1967	1:250,000	Incomplete Photocopy. Complete land coverage; map missing Index, Glossary and Legend.		Topographic map
185 H	Tulak, Afghanistan	416	Fairchild Aerial Survey	Ministry of Mines and Industry Royal Government of Afghanistan	1967	1:250,000	Incomplete Photocopy. Complete land coverage; map missing Index, Glossary and Legend.		Topographic map
186 H	Pasaband, Afghanistan	417	Fairchild Aerial Survey	Ministry of Mines and Industry Royal Government of Afghanistan	1967	1:250,000	Incomplete Photocopy. Complete land coverage; map missing Index, Glossary and Legend.		Topographic map

Map No.	Title	Sheet No.	Author	Publisher	Date	Scale	Description	Size	Subject
187 H	Kejran, Afghanistan	418	Fairchild Aerial Survey	Ministry of Mines and Industry Royal Government of Afghanistan	1967	1:250,000	Incomplete Photocopy. Complete land coverage; map missing Index, Glossary and Legend.		Topographic map
188 H	Daste Cahe Mazar, Afghanistan	419	Fairchild Aerial Survey	Ministry of Mines and Industry Royal Government of Afghanistan	1967	1:250,000	Incomplete Photocopy. Complete land coverage; map missing Index, Glossary and Legend.		Topographic map
189 H	Anardara, Afghanistan	420	Fairchild Aerial Survey	Ministry of Mines and Industry Royal Government of Afghanistan	1967	1:250,000	Incomplete Photocopy. Complete land coverage; map missing Index, Glossary and Legend.		Topographic map
190 H	Farah, Afghanistan	421	Fairchild Aerial Survey	Ministry of Mines and Industry Royal Government of Afghanistan	UNK	1:250,000	Incomplete Photocopy. Complete land coverage; map missing Index, Glossary and Legend.		Topographic map
191 H	Hokumate Pur Caman, Afghanistan	422	Fairchild Aerial Survey	Ministry of Mines and Industry Royal Government	1967	1:250,000	Incomplete Photocopy. Complete land coverage; map missing Index, Glossary and Legend.		Topographic map

Map No.	Title	Sheet No.	Author	Publisher	Date	Scale	Description	Size	Subject
				of Afghanistan					
192 H	Nawzad- musa Qal'a, Afghanistan	423	Fairchild Aerial Survey	Ministry of Mines and Industry Royal Government of Afghanistan	1967	1:250,000	Incomplete Photocopy. Complete land coverage; map missing Index, Glossary and Legend.		Topographic map
193 H	Dehrawat, Afghanistan	424	Fairchild Aerial Survey	Ministry of Mines and Industry Royal Government of Afghanistan	1967	1:250,000	Incomplete Photocopy. Complete land coverage; map missing Index, Glossary and Legend.		Topographic map
194 H	Sangcarak, Afghanistan	501	Fairchild Aerial Survey	Ministry of Mines and Industry Royal Government of Afghanistan	1967	1:250,000	Incomplete Photocopy. Complete land coverage; map missing Index, Glossary and Legend.		Topographic map
195 H	Sayghano- Kahmard, Afghanistan	502	Fairchild Aerial Survey	Ministry of Mines and Industry Royal Government of Afghanistan	1967	1:250,000	Incomplete Photocopy. Complete land coverage; map missing Index, Glossary and Legend.		Topographic map

Map No.	Title	Sheet No.	Author	Publisher	Date	Scale	Description	Size	Subject
196 H	Pule Khumri, Afghanistan	503	Fairchild Aerial Survey	Ministry of Mines and Industry Royal Government of Afghanistan	UNK	1:250,000	Incomplete Photocopy. Complete land coverage; map missing Index, Glossary and Legend.		Topographic map
197 H	Caharikar, Afghanistan	504	Fairchild Aerial Survey	Ministry of Mines and Industry Royal Government of Afghanistan	UNK	1:250,000	Incomplete Photocopy. Complete land coverage; map missing Index, Glossary and Legend.		Topographic map
198 H	Tagabe Munjan, Afghanistan	505	Fairchild Aerial Survey	Ministry of Mines and Industry Royal Government of Afghanistan	UNK	1:250,000	Incomplete Photocopy. Complete land coverage; map missing Index, Glossary and Legend.		Topographic map
199 H	Asmar-Kamdes, Afghanistan	506	Fairchild Aerial Survey	Ministry of Mines and Industry Royal Government of Afghanistan	UNK	1:250,000	Incomplete Photocopy. Complete land coverage; map missing Index, Glossary and Legend.		Topographic map
200 H	La'l-Sarjantal, Afghanistan	507	Fairchild Aerial Survey	Ministry of Mines and Industry Royal Government	1967	1:250,000	Incomplete Photocopy. Complete land coverage; map missing Index, Glossary and Legend.		Topographic map

Map No.	Title	Sheet No.	Author	Publisher	Date	Scale	Description	Size	Subject
				of Afghanistan					
201 H	Mamyan, Afghanistan	508	Fairchild Aerial Survey	Ministry of Mines and Industry Royal Government of Afghanistan	UNK	1:250,000	Incomplete Photocopy. Complete land coverage; map missing Index, Glossary and Legend.		Topographic map
202 H	Cake Wardak- Syahgerd, Afghanistan	509	Fairchild Aerial Survey	Ministry of Mines and Industry Royal Government of Afghanistan	UNK	1:250,000	Incomplete Photocopy. Complete land coverage; map missing Index, Glossary and Legend.		Topographic map
203 H	Kabul, Afghanistan	510	Fairchild Aerial Survey	Ministry of Mines and Industry Royal Government of Afghanistan	UNK	1:250,000	Incomplete Photocopy. Complete land coverage; map missing Index, Glossary and Legend.		Topographic map
204 H	Jalalabad, Afghanistan	511	Fairchild Aerial Survey	Ministry of Mines and Industry Royal Government of Afghanistan	UNK	1:250,000	Incomplete Photocopy. Complete land coverage; map missing Index, Glossary and Legend.		Topographic map

Map No.	Title	Sheet No.	Author	Publisher	Date	Scale	Description	Size	Subject
205 H	Caghasaray, Afghanistan	512	Fairchild Aerial Survey	Ministry of Mines and Industry Royal Government of Afghanistan	UNK	1:250,000	Incomplete Photocopy. Complete land coverage; map missing Index, Glossary and Legend.		Topographic map
206 H	Gizab, Afghanistan	513	Fairchild Aerial Survey	Ministry of Mines and Industry Royal Government of Afghanistan	UNK	1:250,000	Incomplete Photocopy. Complete land coverage; map missing Index, Glossary and Legend.		Topographic map
207 H	Nawer, Afghanistan	514	Fairchild Aerial Survey	Ministry of Mines and Industry Royal Government of Afghanistan	UNK	1:250,000	Incomplete Photocopy. Complete land coverage; map missing Index, Glossary and Legend.		Topographic map
208 H	Ghazni, Afghanistan	515	Fairchild Aerial Survey	Ministry of Mines and Industry Royal Government of Afghanistan	UNK	1:250,000	Incomplete Photocopy. Complete land coverage; map missing Index, Glossary and Legend.		Topographic map
209 H	Gardez, Afghanistan	516	Fairchild Aerial Survey	Ministry of Mines and Industry Royal Government	UNK	1:250,000	Incomplete Photocopy. Complete land coverage; map missing Index, Glossary and Legend.		Topographic map

Map No.	Title	Sheet No.	Author	Publisher	Date	Scale	Description	Size	Subject
				of Afghanistan					
210 H	Jajimaydan, Afghanistan	517	Fairchild Aerial Survey	Ministry of Mines and Industry Royal Government of Afghanistan	UNK	1:250,000	Incomplete Photocopy. Complete land coverage; map missing Index, Glossary and Legend.		Topographic map
211 H	Oruzgan, Afghanistan	519	Fairchild Aerial Survey	Ministry of Mines and Industry Royal Government of Afghanistan	UNK	1:250,000	Incomplete Photocopy. Complete land coverage; map missing Index, Glossary and Legend.		Topographic map
212 H	Moqur, Afghanistan	520	Fairchild Aerial Survey	Ministry of Mines and Industry Royal Government of Afghanistan	UNK	1:250,000	Incomplete Photocopy. Complete land coverage; map missing Index, Glossary and Legend.		Topographic map
213 H	Khayr Kot, Afghanistan	521	Fairchild Aerial Survey	Ministry of Mines and Industry Royal Government of Afghanistan	UNK	1:250,000	Incomplete Photocopy. Complete land coverage; map missing Index, Glossary and Legend.		Topographic map

Map No.	Title	Sheet No.	Author	Publisher	Date	Scale	Description	Size	Subject
214 H	Urgun, Afghanistan	522	Fairchild Aerial Survey	Ministry of Mines and Industry Royal Government of Afghanistan	UNK	1:250,000	Incomplete Photocopy. Complete land coverage; map missing Index, Glossary and Legend.		Topographic map
215 H	Asparan, Afghanistan	601	Fairchild Aerial Survey	Ministry of Mines and Industry Royal Government of Afghanistan	1967	1:250,000	Incomplete Photocopy. Complete land coverage; map missing Index, Glossary and Legend.		Topographic map
216 H	Kang, Afghanistan	602	Fairchild Aerial Survey	Ministry of Mines and Industry Royal Government of Afghanistan	UNK	1:250,000	Incomplete Photocopy. Complete land coverage; map missing Index, Glossary and Legend.		Topographic map
217 H	Cakhansur, Afghanistan	603	Fairchild Aerial Survey	Ministry of Mines and Industry Royal Government of Afghanistan	UNK	1:250,000	Incomplete Photocopy. Complete land coverage; map missing Index, Glossary and Legend.		Topographic map
218 H	Kotalak, Afghanistan	604	Fairchild Aerial Survey	Ministry of Mines and Industry Royal Government	1967	1:250,000	Incomplete Photocopy. Complete land coverage; map missing Index, Glossary and Legend.		Topographic map

Map No.	Title	Sheet No.	Author	Publisher	Date	Scale	Description	Size	Subject
				of Afghanistan					
219 H	Laskargah, Afghanistan	605	Fairchild Aerial Survey	Ministry of Mines and Industry Royal Government of Afghanistan	1967	1:250,000	Incomplete Photocopy. Complete land coverage; map missing Index, Glossary and Legend.		Topographic map
220 H	Kandahar, Afghanistan	606	Fairchild Aerial Survey	Ministry of Mines and Industry Royal Government of Afghanistan	1967	1:250,000	Incomplete Photocopy. Complete land coverage; map missing Index, Glossary and Legend.		Topographic map
221 H	Qal'a Fath, Afghanistan	608	Fairchild Aerial Survey	Ministry of Mines and Industry Royal Government of Afghanistan	1967	1:250,000	Incomplete Photocopy. Complete land coverage; map missing Index, Glossary and Legend.		Topographic map
222 H	Caharburjak , Afghanistan	609	Fairchild Aerial Survey	Ministry of Mines and Industry Royal Government of Afghanistan	1967	1:250,000	Incomplete Photocopy. Complete land coverage; map missing Index, Glossary and Legend.		Topographic map

Map No.	Title	Sheet No.	Author	Publisher	Date	Scale	Description	Size	Subject
223 H	Khannesin, Afghanistan	610	Fairchild Aerial Survey	Ministry of Mines and Industry Royal Government of Afghanistan	1967	1:250,000	Incomplete Photocopy. Complete land coverage; map missing Index, Glossary and Legend.		Topographic map
224 H	Laki-Banader, Afghanistan	611	Fairchild Aerial Survey	Ministry of Mines and Industry Royal Government of Afghanistan	1967	1:250,000	Incomplete Photocopy. Complete land coverage; map missing Index, Glossary and Legend.		Topographic map
225 H	Jahangir Naweran, Afghanistan	612	Fairchild Aerial Survey	Ministry of Mines and Industry Royal Government of Afghanistan	1967	1:250,000	Complete Photocopy. Includes Index, Glossary and Legend.		Topographic map. Transverse mercator projection.
226 H	Malek-Syakhkoh, Afghanistan	613	Fairchild Aerial Survey	Ministry of Mines and Industry Royal Government of Afghanistan	1967	1:250,000	Incomplete Photocopy. Complete land coverage; map missing Index, Glossary and Legend.		Topographic map
227 H	Gozare Sah, Afghanistan	614	Fairchild Aerial Survey	Ministry of Mines and Industry Royal Government	1967	1:250,000	Incomplete Photocopy. Complete land coverage; map missing Index, Glossary and Legend.		Topographic map

Map No.	Title	Sheet No.	Author	Publisher	Date	Scale	Description	Size	Subject
				of Afghanistan					
228 H	Gawdezereh , Afghanistan	615	Fairchild Aerial Survey	Ministry of Mines and Industry Royal Government of Afghanistan	1967	1:250,000	Incomplete Photocopy. Complete land coverage; map missing Index, Glossary and Legend.		Topographic map
229 H	Galacah, Afghanistan	616	Fairchild Aerial Survey	Ministry of Mines and Industry Royal Government of Afghanistan	UNK	1:250,000	Incomplete Photocopy. Complete land coverage; map missing Index, Glossary and Legend.		Topographic map
230 H	Sah-Esma'il, Afghanistan	617	Fairchild Aerial Survey	Ministry of Mines and Industry Royal Government of Afghanistan	UNK	1:250,000	Incomplete Photocopy. Complete land coverage; map missing Index, Glossary and Legend.		Topographic map
231 H	Reg 'Alaqadari, Afghanistan	618	Fairchild Aerial Survey	Ministry of Mines and Industry Royal Government of Afghanistan	1967	1:250,000	Complete Photocopy. Includes Index, Glossary and Legend.		Topographic map

Map No.	Title	Sheet No.	Author	Publisher	Date	Scale	Description	Size	Subject
232 H	Jaldak, Afghanistan	701	Fairchild Aerial Survey	Ministry of Mines and Industry Royal Government of Afghanistan	UNK	1:250,000	Incomplete Photocopy. Complete land coverage; map missing Index, Glossary and Legend.		Topographic map
233 H	Ma'ruf Nawa, Afghanistan	702	Fairchild Aerial Survey	Ministry of Mines and Industry Royal Government of Afghanistan	UNK	1:250,000	Incomplete Photocopy. Complete land coverage; map missing Index, Glossary and Legend.		Topographic map
234 H	Yehya Wona, Afghanistan	703	Fairchild Aerial Survey	Ministry of Mines and Industry Royal Government of Afghanistan	UNK	1:250,000	Incomplete Photocopy. Complete land coverage; map missing Index, Glossary and Legend.		Topographic map
235 H	Wersek, Afghanistan	704	Fairchild Aerial Survey	Ministry of Mines and Industry Royal Government of Afghanistan	UNK	1:250,000	Incomplete Photocopy. Complete land coverage; map missing Index, Glossary and Legend.		Topographic map
236 H	Sreh Cahan, Afghanistan	707	Fairchild Aerial Survey	Ministry of Mines and Industry Royal Government	UNK	1:250,000	Incomplete Photocopy. Complete land coverage; map missing Index, Glossary and Legend.		Topographic map

Map No.	Title	Sheet No.	Author	Publisher	Date	Scale	Description	Size	Subject
				of Afghanistan					
237 H	Samandkhan Karez, Afghanistan	713	Fairchild Aerial Survey	Ministry of Mines and Industry Royal Government of Afghanistan	UNK	1:250,000	Incomplete Photocopy. Complete land coverage; map missing Index, Glossary and Legend.		Topographic map
238 H	Ghūryān	1285		2-TPC	1966	1:100,000	Topographic map with points of interest. Series U611.		DoD
239 H	Awkal	1383		1-TPC	1968	1:100,000	Topographic map with points of interest. Series U611.		DoD
240 H	Dēwālān	1384		1-TPC	1968	1:100,000	Topographic map with points of interest. Series U611.		DoD
241 H	Zindājān	1385		2-TPC	1966	1:100,000	Topographic map with points of interest. Series U611.		DoD
242 H	Qara Bāgh	1386		2-TPC	1966	1:100,000	Topographic map with points of interest. Series U611.		DoD
243 H	Tūtači	1387		2-TPC	1966	1:100,000	Topographic map with points of interest. Series U611.		DoD
244 H	Farāh	1481		1-TPC	1970	1:100,000	Topographic map with points of interest. Series U611.		DoD
245	Šēwān	1482		1-TPC	1970	1:100,000	Topographic map with points of interest. Series U611.		DoD

Map No.	Title	Sheet No.	Author	Publisher	Date	Scale	Description	Size	Subject
H									
246 H	Šīndand	1483		1-TPC	1968	1:100,000	Topographic map with points of interest. Series U611.		DoD
247 H	Aḍreskan	1484		1-TPC	1968	1:100,000	Topographic map with points of interest. Series U611.		DoD
248 H	Heḡāt	1485		1-AMS	1966	1:100,000	Topographic map with points of interest. Series U611.		DoD
249 H	Khuš Āsyā	1486		1-AMS	1966	1:100,000	Topographic map with points of interest. Series U611.		DoD
250 H	Tōraghunḍi	1487		1-AMS	1966	1:100,000	Topographic map with points of interest. Series U611.		DoD
251 H	Maḡkaze Hokūmate Sultāne Bakwā	1581		1-TPC	1970	1:100,000	Topographic map with points of interest. Series U611.		DoD
252 H	Azaw	1583		1-TPC	1968	1:100,000	Topographic map with points of interest. Series U611.		DoD
253 H	Kaḡawča	1584		1-TPC	1968	1:100,000	Topographic map with points of interest. Series U611.		DoD
254 H	Kaḡukh	1585		1-AMS	1966	1:100,000	Topographic map with points of interest. Series U611.		DoD
255	Kušk-I-Kohna	1586		1-AMS	1966	1:100,000	Topographic map with points of interest. Series U611.		DoD

Map No.	Title	Sheet No.	Author	Publisher	Date	Scale	Description	Size	Subject
H									
256 H	Sang Āteš Bulogha	1587		1-AMS	1966	1:100,000	Topographic map with points of interest. Series U611.		DoD
257 H	Dašte Mārgo	1679		1-TPC	1968	1:100,000	Topographic map with points of interest. Series U611.		DoD
258 H	Kōtalak	1680		1-TPC	1968	1:100,000	Topographic map with points of interest. Series U611.		DoD
259 H	Delārām	1681		1-TPC	1968	1:100,000	Topographic map with points of interest. Series U611.		DoD
260 H	Gōr Zanak	1682		1-TPC	1968	1:100,000	Topographic map with points of interest. Series U611.		DoD
261 H	Bar Azaw	1683		1-TPC	1968	1:100,000	Topographic map with points of interest. Series U611.		DoD
262 H	Tagāwe Šešyār	1684		1-TPC	1968	1:100,000	Topographic map with points of interest. Series U611.		DoD
263 H	Čahārmaḥal e Ōbē	1685		1-TPC	1968	1:100,000	Topographic map with points of interest. Series U611.		DoD
264 H	Qal'A-I- Naw	1686		1-TPC	1968	1:100,000	Topographic map with points of interest. Series U611.		DoD
265 H	Muquṛ	1687		1-AMS	1966	1:100,000	Topographic map with points of interest. Series U611.		DoD

Map No.	Title	Sheet No.	Author	Publisher	Date	Scale	Description	Size	Subject
266 H	Bālā Murghāb	1688		1-AMS	1966	1:100,000	Topographic map with points of interest. Series U611.		DoD
267 H	Gawarnāz Ghundyān	1779		1-TPC	1968	1:100,000	Topographic map with points of interest. Series U611.		DoD
268 H	Tal Kalā	1780		1-TPC	1968	1:100,000	Topographic map with points of interest. Series U611.		DoD
269 H	Wāšēr	1781		1-TPC	1968	1:100,000	Topographic map with points of interest. Series U611.		DoD
270 H	Hokūmate Puṛ Čaman	1782		1-TPC	1968	1:100,000	Topographic map with points of interest. Series U611.		DoD
271 H	Puṛčaman	1783		1-TPC	1968	1:100,000	Topographic map with points of interest. Series U611.		DoD
272 H	Dehe Ākherī	1784		1-TPC	1968	1:100,000	Topographic map with points of interest. Series U611.		DoD
273 H	Češte Šarīf	1785		1-TPC	1968	1:100,000	Topographic map with points of interest. Series U611.		DoD
274 H	Khayṛkhāna	1786		1-TPC	1968	1:100,000	Topographic map with points of interest. Series U611.		DoD
275 H	Ghōrmāč	1788		1-TPC	1969	1:100,000	Topographic map with points of interest. Series U611.		DoD
276	Laškargāh	1880		1-TPC	1969	1:100,000	Topographic map with points of interest. Series U611.		DoD

Map No.	Title	Sheet No.	Author	Publisher	Date	Scale	Description	Size	Subject
H									
277 H	Qaysār	1888		1-TPC	1969	1:100,000	Topographic map with points of interest. Series U611.		DoD
278 H	Wāṣel Nāwēr	1978		1-TPC	1969	1:100,000	Topographic map with points of interest. Series U611.		DoD
279 H	Ḍašte Saršāh	1979		1-TPC	1969	1:100,000	Topographic map with points of interest. Series U611.		DoD
280 H	Gerešk	1980		1-TPC	1969	1:100,000	Topographic map with points of interest. Series U611.		DoD
281 H	Čōtōk Čā	2077		1-TPC	1969	1:100,000	Topographic map with points of interest. Series U611.		DoD
282 H	Dāgo Nāwēr	2078		1-TPC	1969	1:100,000	Topographic map with points of interest. Series U611.		DoD
283 H	Talūkān	2079		1-TPC	1969	1:100,000	Topographic map with points of interest. Series U611.		DoD
284 H	Keškenakhu d	2080		1-TPC	1969	1:100,000	Topographic map with points of interest. Series U611.		DoD
285 H	Kajakī 'Ulyā	2081		1-TPC	1969	1:100,000	Topographic map with points of interest. Series U611.		DoD
286 H	Ḍeh Rāwod	2082		2-DMA	1986	1:100,000	Topographic map with points of interest. Series U611.		DoD

Map No.	Title	Sheet No.	Author	Publisher	Date	Scale	Description	Size	Subject
287 H	Mandōzi	2177		1-TPC	1969	1:100,000	Topographic map with points of interest. Series U611.		DoD
288 H	Molāhasan Kēndwālē	2178		1-TPC	1969	1:100,000	Topographic map with points of interest. Series U611.		DoD
289 H	Neway Dēh	2179		1-TPC	1969	1:100,000	Topographic map with points of interest. Series U611.		DoD
290 H	Qandahār	2180		1-TPC	1969	1:100,000	Topographic map with points of interest. Series U611.		DoD
291 H	Šawēz	2181		1-TPC	1969	1:100,000	Topographic map with points of interest. Series U611.		DoD
292 H	Āb Burdah	2182		1-TPC	1969	1:100,000	Topographic map with points of interest. Series U611.		DoD
293 H	Hokūmati Šōrāwak	2277		1-TPC	1970	1:100,000	Topographic map with points of interest. Series U611.		DoD
294 H	Ađōzi	2278		1-TPC	1970	1:100,000	Topographic map with points of interest. Series U611.		DoD
295 H	Mīrgyān	2279		1-TPC	1969	1:100,000	Topographic map with points of interest. Series U611.		DoD
296 H	Šahre Šafā	2280		1-TPC	1969	1:100,000	Topographic map with points of interest. Series U611.		DoD
297	Tanācōy	2281		1-TPC	1969	1:100,000	Topographic map with points of interest. Series U611.		DoD

Map No.	Title	Sheet No.	Author	Publisher	Date	Scale	Description	Size	Subject
H									
298 H	Sarāb	2282		1-TPC	1969	1:100,000	Topographic map with points of interest. Series U611.		DoD
299 H	Hokūmatī Gīzāw	2283		1-TPC	1969	1:100,000	Topographic map with points of interest. Series U611.		DoD
300 H	Mullā Wali Wālēh	2379		1-TPC	1970	1:100,000	Topographic map with points of interest. Series U611.		DoD
301 H	Čaqmaq	2383		1-TPC	1969	1:100,000	Topographic map with points of interest. Series U611.		DoD
302 H	Mīr Gholām	2384		1-TPC	1969	1:100,000	Topographic map with points of interest. Series U611.		DoD
303 H	Qarghōri	2385		1-TPC	1969	1:100,000	Topographic map with points of interest. Series U611.		DoD
304 H	Sandarzay	2479		1-TPC	1970	1:100,000	Topographic map with points of interest. Series U611.		DoD
305 H	Hāji	2483		1-TPC	1969	1:100,000	Topographic map with points of interest. Series U611.		DoD
306 H	Oluswālī Ajrestān	2484		1-TPC	1969	1:100,000	Topographic map with points of interest. Series U611.		DoD
307 H	Panjāw	2485		1-TPC	1968	1:100,000	Topographic map with points of interest. Series U611.		DoD

Map No.	Title	Sheet No.	Author	Publisher	Date	Scale	Description	Size	Subject
308 H	Nawe Tundak	2486		1-TPC	1968	1:100,000	Topographic map with points of interest. Series U611.		DoD
309 H	Ḍarrahe Ḍaymīrdād	2487		1-TPC	1968	1:100,000	Topographic map with points of interest. Series U611.		DoD
310 H	Qal'A	2488		1-TPC	1968	1:100,000	Topographic map with points of interest. Series U611.		DoD
311 H	Moqur	2582		1-TPC	1969	1:100,000	Topographic map with points of interest. Series U611.		DoD
312 H	Lūmān	2583		1-TPC	1969	1:100,000	Topographic map with points of interest. Series U611.		DoD
313 H	Qarḡha-I-Bālā	2584		1-TPC	1969	1:100,000	Topographic map with points of interest. Series U611.		DoD
314 H	Oluswālī Behsūd	2585		1-TPC	1968	1:100,000	Topographic map with points of interest. Series U611.		DoD
315 H	Bāmyān	2586		1-TPC	1968	1:100,000	Topographic map with points of interest. Series U611.		DoD
316 H	Ḍoābe Mēkhe Zarīn	2587		1-TPC	1968	1:100,000	Topographic map with points of interest. Series U611.		DoD
317 H	Ḍoāb	2588		1-TPC	1968	1:100,000	Topographic map with points of interest. Series U611.		DoD

Map No.	Title	Sheet No.	Author	Publisher	Date	Scale	Description	Size	Subject
318 H	Mašōrēy	2681		1-TPC	1969	1:100,000	Topographic map with points of interest. Series U611.		DoD
319 H	Čūray	2682		1-TPC	1969	1:100,000	Topographic map with points of interest. Series U611.		DoD
320 H	Nāni	2683		1-TPC	1970	1:100,000	Topographic map with points of interest. Series U611.		DoD
321 H	Sare Kōtal	2686		1-TPC	1970	1:100,000	Topographic map with points of interest. Series U611.		DoD
322 H	Sāyelān	2687		1-TPC	1970	1:100,000	Topographic map with points of interest. Series U611.		DoD
323 H	Ghāzimarḍ	2688		1-TPC	1970	1:100,000	Topographic map with points of interest. Series U611.		DoD
324 H	Alakzi	2781		1-TPC	1969	1:100,000	Topographic map with points of interest. Series U611.		DoD
325 H	Ōmna	2782		1-TPC	1969	1:100,000	Topographic map with points of interest. Series U611.		DoD
326	Mūškhēl	2783		1-TPC	1970	1:100,000	Topographic map with points of interest. Series U611.		DoD
327 H	Rāmak	2784		1-TPC	1970	1:100,000	Topographic map with points of interest. Series U611.		DoD
328 H	Towp; Zarṇay	2785		2-DMA	1982	1:100,000	Topographic map with points of interest. Series U611.		DoD

Map No.	Title	Sheet No.	Author	Publisher	Date	Scale	Description	Size	Subject
329 H	Zarṅay; Towp	2785		1-TPC	1970	1:100,000	Topographic map with points of interest. Series U611.		DoD
330 H	Paghṁān	2786		1-TPC	1970	1:100,000	Topographic map with points of interest. Series U611.		DoD
331 H	Kham	2787		1-TPC	1970	1:100,000	Topographic map with points of interest. Series U611.		DoD
332 H	Pule Khumṅi	2788		1-TPC	1970	1:100,000	Topographic map with points of interest. Series U611.		DoD
333 H	Sarḥawḍza	2883		1-TPC	1970	1:100,000	Topographic map with points of interest. Series U611.		DoD
334 H	Garḍēz	2884		1-TPC	1970	1:100,000	Topographic map with points of interest. Series U611.		DoD
335 H	Ḍehḍānā	2885		1-TPC	1970	1:100,000	Topographic map with points of interest. Series U611.		DoD
336 H	Kābul	2886		1-TPC	1970	1:100,000	Topographic map with points of interest. Series U611.		DoD
337 H	Āhārīkār	2887		1-TPC	1970	1:100,000	Topographic map with points of interest. Series U611.		DoD
338 H	Banu	2888		1-TPC	1970	1:100,000	Topographic map with points of interest. Series U611.		DoD
339	Hokūmatī Azṅaw	2985		1-TPC	1970	1:100,000	Topographic map with points of interest. Series U611.		DoD

Map No.	Title	Sheet No.	Author	Publisher	Date	Scale	Description	Size	Subject
H									
340 H	Nejrāb	2986		1-TPC	1970	1:100,000	Topographic map with points of interest. Series U611.		DoD
341 H	Āstāna	2987		1-TPC	1970	1:100,000	Topographic map with points of interest. Series U611.		DoD
342 H	Sarāb	2988		1-TPC	1970	1:100,000	Topographic map with points of interest. Series U611.		DoD
343 H	Jalālābād	3085		2-DMA	1982	1:100,000	Topographic map with points of interest. Series U611.		DoD
344 H	Jalālābād	3085		1-TPC	1970	1:100,000	Topographic map with points of interest. Series U611.		DoD
345 H	Ališang	3086		1-TPC	1970	1:100,000	Topographic map with points of interest. Series U611.		DoD
346 H	Gadwāl	3087		1-TPC	1970	1:100,000	Topographic map with points of interest. Series U611.		DoD
347 H	Kur-Pētāb	3088		1-TPC	1970	1:100,000	Topographic map with points of interest. Series U611.		DoD
348 H	Čahārdeh	3185		1-TPC	1970	1:100,000	Topographic map with points of interest. Series U611.		DoD
349 H	Čawkae	3186		1-TPC	1970	1:100,000	Topographic map with points of interest. Series U611.		DoD

Map No.	Title	Sheet No.	Author	Publisher	Date	Scale	Description	Size	Subject
350 H	Kāntiwāy 'Ulyā	3187		1-TPC	1970	1:100,000	Topographic map with points of interest. Series U611.		DoD
351 H	Wēlo	3188		1-TPC	1970	1:100,000	Topographic map with points of interest. Series U611.		DoD
352 H	Āsmār	3287		1-TPC	1970	1:100,000	Topographic map with points of interest. Series U611.		DoD
353 H	Jar Quduq	1989 IV		1-AMS	1965	1:50,000	Topographic map with points of interest. Series U711.		DoD
354 H	Jalajīn	1791 II		1-AMS	1964	1:50,000	Topographic map with points of interest. Series U711.		DoD
355 H	Chār Shangho	1889 IV		1-AMS	1964	1:50,000	Topographic map with points of interest. Series U711.		DoD
356 H	Behsud	1989 I		1-AMS	1964	1:50,000	Topographic map with points of interest. Series U711.		DoD
357 H	Jalalābād	1990 I		1-AMS	1964	1:50,000	Topographic map with points of interest. Series U711.		DoD
358 H	Sheberghān	1990 II		1-AMS	1964	1:50,000	Topographic map with points of interest. Series U711.		DoD
359 H	Lab-I-Jar-I- Taghan	1990 III		1-AMS	1964	1:50,000	Topographic map with points of interest. Series U711.		DoD
360	Khām Āb (East)	1991 I		1-AMS	1964	1:50,000	Topographic map with points of interest. Series U711.		DoD

Map No.	Title	Sheet No.	Author	Publisher	Date	Scale	Description	Size	Subject
H									
361 H	Nai Maidān	2089 IV		1-AMS	1964	1:50,000	Topographic map with points of interest. Series U711.		DoD
362 H	Mordiān-I-Bāla	2090 I		1-AMS	1964	1:50,000	Topographic map with points of interest. Series U711.		DoD
363 H	Pashmi Qala	2090 II		1-AMS	1964	1:50,000	Topographic map with points of interest. Series U711.		DoD
364 H	Ali Moghol	2090 III		1-AMS	1964	1:50,000	Topographic map with points of interest. Series U711.		DoD
365 H	Aqcha	2090 IV		1-AMS	1964	1:50,000	Topographic map with points of interest. Series U711.		DoD
366 H	Dali	2091 I		1-AMS	1964	1:50,000	Topographic map with points of interest. Series U711.		DoD
367 H	Faruk Qala	2091 II		1-AMS	1964	1:50,000	Topographic map with points of interest. Series U711.		DoD
368 H	Chelik-I-Yass Khān	2091 III		1-AMS	1964	1:50,000	Topographic map with points of interest. Series U711.		DoD
369 H	Qarqīn	2091 IV		1-AMS	1964	1:50,000	Topographic map with points of interest. Series U711.		DoD
370 H	Aq Kupruk	2189 III		1-AMS	1964	1:50,000	Topographic map with points of interest. Series U711.		DoD

Map No.	Title	Sheet No.	Author	Publisher	Date	Scale	Description	Size	Subject
371 H	Qurbaqqa Khāna	2189 IV		1-AMS	1964	1:50,000	Topographic map with points of interest. Series U711.		DoD
372 H	Qarchi Gak	2191 III		1-AMS	1964	1:50,000	Topographic map with points of interest. Series U711.		DoD
373 H	Shor Tēpa	2191 IV		1-AMS	1964	1:50,000	Topographic map with points of interest. Series U711.		DoD
374 H	Qush Mulla	2289 I		1-AMS	1964	1:50,000	Topographic map with points of interest. Series U711.		DoD
375 H	Orlamish	2289 II		1-AMS	1964	1:50,000	Topographic map with points of interest. Series U711.		DoD
376 H	Jān Bulāq	2289 IV		1-AMS	1964	1:50,000	Topographic map with points of interest. Series U711.		DoD
377 H	Deh Warda	2290 I		1-AMS	1964	1:50,000	Topographic map with points of interest. Series U711.		DoD
378 H	Tāshqurghān	2290 II		1-AMS	1964	1:50,000	Topographic map with points of interest. Series U711.		DoD
379 H	Marmol	2290 III		1-AMS	1964	1:50,000	Topographic map with points of interest. Series U711.		DoD
380 H	Nāyibābād	2290 IV		1-AMS	1964	1:50,000	Topographic map with points of interest. Series U711.		DoD
381	Hazara Toghai	2291 III		1-AMS	1964	1:50,000	Topographic map with points of interest. Series U711.		DoD

Map No.	Title	Sheet No.	Author	Publisher	Date	Scale	Description	Size	Subject
H									
382 H	Hazara Toghai (North)	2291 IV		1-AMS	1964	1:50,000	Topographic map with points of interest. Series U711.		DoD
383 H	Šulūklū	2389 I		1-AMS	1964	1:50,000	Topographic map with points of interest. Series U711.		DoD
384 H	Šōr Āb-I-Bālā	2389 II		1-AMS	1964	1:50,000	Topographic map with points of interest. Series U711.		DoD
385 H	Ḍarrāh-I-Zendān	2389 III		1-AMS	1964	1:50,000	Topographic map with points of interest. Series U711.		DoD
386 H	Āybak (Samangān)	2389 IV		1-AMS	1964	1:50,000	Topographic map with points of interest. Series U711.		DoD
387 H	Kulūkh Tapa	2390 I		1-AMS	1964	1:50,000	Topographic map with points of interest. Series U711.		DoD
388 H	Khoyr Ābād	2390 II		1-AMS	1964	1:50,000	Topographic map with points of interest. Series U711.		DoD
389 H	Yangi Aregh	2390 III		1-AMS	1964	1:50,000	Topographic map with points of interest. Series U711.		DoD
390 H	Khuš Tapa	2390 IV		1-AMS	1964	1:50,000	Topographic map with points of interest. Series U711.		DoD
391 H	Koh-I-Sūrbaytal	2391 II		1-AMS	1964	1:50,000	Topographic map with points of interest. Series U711.		DoD

Map No.	Title	Sheet No.	Author	Publisher	Date	Scale	Description	Size	Subject
392 H	Kocha Qum	2391 III		1-AMS	1964	1:50,000	Topographic map with points of interest. Series U711.		DoD
393 H	Dašt-I- Ġawhar	2489 IV		1-AMS	1964	1:50,000	Topographic map with points of interest. Series U711.		DoD
394 H	Ālčīn	2490 I		1-AMS	1964	1:50,000	Topographic map with points of interest. Series U711.		DoD
395 H	Qundūz	2490 II		1-AMS	1964	1:50,000	Topographic map with points of interest. Series U711.		DoD
396 H	Qara Bātūr Qešlāq	2490 III		1-AMS	1964	1:50,000	Topographic map with points of interest. Series U711.		DoD
397 H	Tarībūz Ġuzaṛ	2490 IV		1-AMS	1964	1:50,000	Topographic map with points of interest. Series U711.		DoD
398 H	Āq Masjed (west)	2491 I		1-AMS	1964	1:50,000	Topographic map with points of interest. Series U711.		DoD
399 H	Imām Sāheb	2491 II		1-AMS	1964	1:50,000	Topographic map with points of interest. Series U711.		DoD
400 H	Qal'a-I-Zāl	2491 III		1-AMS	1964	1:50,000	Topographic map with points of interest. Series U711.		DoD
401 H	Čoqur Qešlāq	2590 I		1-AMS	1964	1:50,000	Topographic map with points of interest. Series U711.		DoD
402	Tāluqān	2590 II		1-AMS	1964	1:50,000	Topographic map with points of interest. Series U711.		DoD

Map No.	Title	Sheet No.	Author	Publisher	Date	Scale	Description	Size	Subject
H									
403 H	Khān Ābād	2590 III		1-AMS	1964	1:50,000	Topographic map with points of interest. Series U711.		DoD
404 H	Naw Ābād	2591 III		1-AMS	1964	1:50,000	Topographic map with points of interest. Series U711.		DoD
405 H	Āq Masjed (east)	2591 IV		1-AMS	1964	Maximum Elevation ~347m	Topographic map with points of interest. Series U711.		DoD
406 H	Farkhār	2690 III		1-AMS	1964	1:50,000	Topographic map with points of interest. Series U711.		DoD
407 H	Dādsi	2690 IV		1-AMS	1964	1:50,000	Topographic map with points of interest. Series U711.		DoD
408 H	Ārtin Jelaw	2691 II		1-AMS	1964	1:50,000	Topographic map with points of interest. Series U711.		DoD
409 H	Rustāq	2691 III		1-AMS	1964	1:50,000	Topographic map with points of interest. Series U711.		DoD
410 H	Čāh-I-Āb	2691 IV		1-AMS	1964	1:50,000	Topographic map with points of interest. Series U711.		DoD
411 H	Bāgh-I-Būstān (west)	1790 I		1-AMS	1964	1:50,000	Topographic map with points of interest. Series U711.		DoD
412 H	Sarāvān	NG 41-02		Defense Mapping	1969	1:250,000	Series: 1501 AIR Edition: 2		Joint OPS (JOGs)

Map No.	Title	Sheet No.	Author	Publisher	Date	Scale	Description		Size	Subject
				Agency (DMA)						
413 H	Nāg	NG 41-04		U.S. Air Force	1967	1:250,000	1501 AIR	1		Joint OPS (JOGs)
414 H	Pīshīn	NG 41-06		U.S. Army	1969	1:250,000	1501 AIR	1		Joint OPS (JOGs)
415 H	Panjgūr	NG 41-07		Defense Mapping Agency (DMA)	1968	1:250,000	1501 AIR	3		Joint OPS (JOGs)
416 H	Bedi Dat	NG 41-08		U.S. Air Force	1967	1:250,000	1501 AIR	1		Joint OPS (JOGs)
417 H	Pasni	NG 41-11		U.S. Air Force	1967	1:250,000	1501 AIR	1		Joint OPS (JOGs)
418 H	Ormāra	NG 41-12		U.S. Air Force	1967	1:250,000	1501 AIR	1		Joint OPS (JOGs)
419 H	Wāndhari	NG 42-01		U.S. Army	1955	1:250,000	U502	1-AMS		Joint OPS (JOGs)
420 H	Sukkur	NG 42-02		U.S. Army	1955	1:250,000	U502	1-AMS		Joint OPS (JOGs)
421 H	Mīrpur Māthelo	NG 42-03		U.S. Army	1954	1:250,000	U502	1-AMS		Joint OPS (JOGs)

Map No.	Title	Sheet No.	Author	Publisher	Date	Scale	Description		Size	Subject
422 H	Kishangarh	NG 42-04		U.S. Army	1955	1:250,000	U502	1-AMS		Joint OPS (JOGs)
423 H	Bela	NG 42-05		U.S. Army	1955	1:250,000	U502	1-AMS		Joint OPS (JOGs)
424 H	Nawābshāh	NG 42-06		U.S. Army	1955	1:250,000	U502	1-AMS		Joint OPS (JOGs)
425 H	Mīājlar	NG 42-07		U.S. Army	1955	1:250,000	U502	1-AMS		Joint OPS (JOGs)
426 H	Uthal	NG 42-09		U.S. Army	1954	1:250,000	U502	1-AMS		Joint OPS (JOGs)
427 H	Hyderābād	NG 42-10		U.S. Army	1955	1:250,000	U502	1-AMS		Joint OPS (JOGs)
428 H	Mīrpur Khās	NG 42-11		U.S. Army	1955	1:250,000	U502	1-AMS		Joint OPS (JOGs)
429 H	Barmer	NG 42-12		U.S. Army	1955	1:250,000	U502	1-AMS		Joint OPS (JOGs)
430 H	Karāchi	NG 42-13		U.S. Army	1954	1:250,000	U502	1-AMS		Joint OPS (JOGs)
431 H	Tatta	NG 42-14		U.S. Army	1954	1:250,000	U502	1-AMS		Joint OPS (JOGs)
432	Islām Kot	NG 42-15		U.S. Army	1955	1:250,000	U502	1-AMS		Joint OPS (JOGs)

Map No.	Title	Sheet No.	Author	Publisher	Date	Scale	Description		Size	Subject
H										
433 H	Nagar Pärkar	NG 42-16		U.S. Army	1955	1:250,000	U502	1-AMS		Joint OPS (JOGs)
434 H	Zābol	NH 41-01		U.S. Army	1969	1:250,000	1501	1		Joint OPS (JOGs)
435 H	Zābol	NH 41-01		U.S. Army	1969	1:250,000	1501 AIR	1		Joint OPS (JOGs)
436 H	Laše Jowayn	NH 41-02		U.S. Army	1970	1:250,000	1501	1		Joint OPS (JOGs)
437 H	Laše Jowayn	NH 41-02		U.S. Army	1970	1:250,000	1501 AIR	1		Joint OPS (JOGs)
438 H	Laškargāh	NH 41-03		U.S. Army	1968	1:250,000	1501	1		Joint OPS (JOGs)
439 H	Laškargāh	NH 41-03		U.S. Army	1967	1:250,000	1501 AIR	1		Joint OPS (JOGs)
440 H	Qandahār	NH 41-04		U.S. Army	1967	1:250,000	1501	1		Joint OPS (JOGs)
441 H	Qandahār	NH 41-04		U.S. Army	1968	1:250,000	1501 AIR	1		Joint OPS (JOGs)
442 H	Daryācheh-Ye Hāmūn	NH 41-05		U.S. Army	1969	1:250,000	1501	1		Joint OPS (JOGs)

Map No.	Title	Sheet No.	Author	Publisher	Date	Scale	Description		Size	Subject
443 H	Čahār Buṛjak	NH 41-06		U.S. Army	1970	1:250,000	1501	1		Joint OPS (JOGs)
444 H	Čahār Buṛjak	NH 41-06		U.S. Army	1970	1:250,000	1501 AIR	1		Joint OPS (JOGs)
445 H	Tāghaz	NH 41-07		U.S. Army	1967	1:250,000	1501	1		Joint OPS (JOGs)
446 H	Tāghaz	NH 41-07		U.S. Army	1967	1:250,000	1501 AIR	1		Joint OPS (JOGs)
447 H	Mandōzi	NH 41-08		U.S. Army	1968	1:250,000	1501	1		Joint OPS (JOGs)
448 H	Mandōzi	NH 41-08		U.S. Army	1968	1:250,000	1501 AIR	1		Joint OPS (JOGs)
449 H	Zāhedān	NH 41-09		U.S. Army	1969	1:250,000	1501	2		Joint OPS (JOGs)
450 H	Gawḏezereh	NH 41-10		U.S. Army	1968	1:250,000	1501	2		Joint OPS (JOGs)
451 H	Tahāna-I- Jēlējel	NH 41-11		U.S. Army	1968	1:250,000	1501	1		Joint OPS (JOGs)
452 H	Rēg 'Ālāqadāri	NH 41-12		U.S. Army	1968	1:250,000	1501	1		Joint OPS (JOGs)
453	Nok Kundi	NH 41-14		U.S. Army	1969	1:250,000	1501	2		Joint OPS (JOGs)

Map No.	Title	Sheet No.	Author	Publisher	Date	Scale	Description	Size	Subject
H									
454 H	Murmāgai	NH 41-15		U.S. Army	1967	1:250,000	1501 AIR	1	Joint OPS (JOGs)
455 H	Saṛ Kelīžay	NH 42-01		U.S. Army	1969	1:250,000	1501	1	Joint OPS (JOGs)
456 H	Spīn Baldak	NH 42-01		U.S. Army	1955	1:250,000	U502	1-AMS	Joint OPS (JOGs)
457 H	Qamruddīn Kārez	NH 42-02		U.S. Army	1969	1:250,000	1501	1	Joint OPS (JOGs)
458 H	Qamruddīn Kārez	NH 42-02		U.S. Army	1969	1:250,000	1501 AIR	1	Joint OPS (JOGs)
459 H	Qamruddīn Kārez	NH 42-02		U.S. Army	1955	1:250,000	U502	1-AMS	Joint OPS (JOGs)
460 H	Fort Sandeman	NH 42-03		U.S. Air Force	1967	1:250,000	1501	1	Joint OPS (JOGs)
461 H	Fort Sandeman	NH 42-03		U.S. Army	1955	1:250,000	U502	1-AMS	Joint OPS (JOGs)
462 H	Dera Ismāīl Khān	NH 42-04		U.S. Army	1955	1:250,000	U502	1-AMS	Joint OPS (JOGs)
463 H	Quetta	NH 42-05		U.S. Army	1968	1:250,000	1501	1	Joint OPS (JOGs)

Map No.	Title	Sheet No.	Author	Publisher	Date	Scale	Description		Size	Subject
464 H	Quetta	NH 42-05		U.S. Army	1955	1:250,000	U502	1-AMS		Joint OPS (JOGs)
465 H	Loralai	NH 42-06		U.S. Army	1955	1:250,000	U502	1-AMS		Joint OPS (JOGs)
466 H	Mekhatar	NH 42-07		Defense Mapping Agency (DMA)	1973	1:250,000	1501 AIR	1		Joint OPS (JOGs)
467 H	Mekhatar	NH 42-07		U.S. Army	1955	1:250,000	U502	1-AMS		Joint OPS (JOGs)
468 H	Multān	NH 42-08		U.S. Army	1955	1:250,000	U502	1-AMS		Joint OPS (JOGs)
469 H	Mastung	NH 42-09		U.S. Air Force	1967	1:250,000	1501	2		Joint OPS (JOGs)
470 H	Mastung	NH 42-09		U.S. Army	1955	1:250,000	U502	1-AMS		Joint OPS (JOGs)
471 H	Sibi	NH 42-10		U.S. Army	1955	1:250,000	U502	1-AMS		Joint OPS (JOGs)
472 H	Rājanpur	NH 42-11		U.S. Army	1955	1:250,000	U502	1-AMS		Joint OPS (JOGs)
473 H	Bahāwalpur	NH 42-12		U.S. Army	1955	1:250,000	U502	1-AMS		Joint OPS (JOGs)

Map No.	Title	Sheet No.	Author	Publisher	Date	Scale	Description		Size	Subject
474 H	Gandāva	NH 42-13		U.S. Army	1955	1:250,000	U502	1-AMS		Joint OPS (JOGs)
475 H	Jacobābād	NH 42-14		U.S. Army	1955	1:250,000	U502	1-AMS		Joint OPS (JOGs)
476 H	Rahīmyar Khān	NH 42-15		U.S. Army	1955	1:250,000	U502	1-AMS		Joint OPS (JOGs)
477 H	Khānpur	NH 42-16		U.S. Army	1954	1:250,000	U502	1-AMS		Joint OPS (JOGs)
478 H	Lyallpur	NH 43-01		U.S. Army	1954	1:250,000	U502	1-AMS		Joint OPS (JOGs)
479 H	Lahore	NH 43-02		U.S. Army	1955	1:250,000	U502	2-AMS		Joint OPS (JOGs)
480 H	Simla	NH 43-04		U.S. Army	1954	1:250,000	U502	1-AMS		Joint OPS (JOGs)
481 H	Montgomer y	NH 43-05		U.S. Army	1954	1:250,000	U502	1-AMS		Joint OPS (JOGs)
482 H	Ferozepore	NH 43-06		U.S. Army	1955	1:250,000	U502	1-AMS		Joint OPS (JOGs)
483 H	Mailsi	NH 43-09		U.S. Army	1955	1:250,000	U502	1-AMS		Joint OPS (JOGs)
484	Sri Gangānagar	NH 43-10		U.S. Army	1954	1:250,000	U502	1-AMS		Joint OPS (JOGs)

Map No.	Title	Sheet No.	Author	Publisher	Date	Scale	Description		Size	Subject
H										
485 H	Bikaner	NH 43-13		U.S. Army	1954	1:250,000	U502	1-AMS		Joint OPS (JOGs)
486 H	Chīni	NH 44-01		U.S. Army	1954	1:250,000	U502	1-AMS		Joint OPS (JOGs)
487 H	Dehra Dūn	NH 44-05		U.S. Army	1954	1:250,000	U502	1-AMS		Joint OPS (JOGs)
488 H	Nanda Devi	NH 44-06		U.S. Army	1955	1:250,000	U502	1-AMS		Joint OPS (JOGs)
489 H	Torbat-E Jām	Ni 41-01		U.S. Army	1971	1:250,000	1501	1		Joint OPS (JOGs)
490 H	Kushka	Ni 41-02		U.S. Army	1967	1:250,000	1501	1		Joint OPS (JOGs)
491 H	Kushka	Ni 41-02		U.S. Army	1967	1:250,000	1501 AIR	1		Joint OPS (JOGs)
492 H	Mūričaq	Ni 41-03		U.S. Army	1968	1:250,000	1501	1		Joint OPS (JOGs)
493 H	Bālā Morghāb	Ni 41-03		Defense Mapping Agency (DMA)	1981	1:250,000	1501 AIR	2		Joint OPS (JOGs)
494	Bālā Morghāb	Ni 41-03		U.S. Army	1952	1:250,000	N502	1-AMS		Joint OPS (JOGs)

Map No.	Title	Sheet No.	Author	Publisher	Date	Scale	Description	Size	Subject
H									
495 H	Maymana	Ni 41-04		U.S. Army	1968	1:250,000	1501	1	Joint OPS (JOGs)
496 H	Maymana	Ni 41-04		U.S. Army	1968	1:250,000	1501 AIR	1	Joint OPS (JOGs)
497 H	Tāybād	Ni 41-05		U.S. Army	1972	1:250,000	1501	1	Joint OPS (JOGs)
498 H	Heṛāt	Ni 41-06		U.S. Army	1967	1:250,000	1501	1	Joint OPS (JOGs)
499 H	Heṛāt	Ni 41-06		U.S. Army	1967	1:250,000	1501 AIR	1	Joint OPS (JOGs)
500 H	Sarčašma	Ni 41-07		U.S. Army	1968	1:250,000	1501	1	Joint OPS (JOGs)
501 H	Sarčašma	Ni 41-07		U.S. Army	1968	1:250,000	1501 AIR	1	Joint OPS (JOGs)
502 H	Čaghčarān	Ni 41-08		U.S. Army	1968	1:250,000	1501	1	Joint OPS (JOGs)
503 H	Čaghčarān	Ni 41-08		U.S. Army	1968	1:250,000	1501	1	Joint OPS (JOGs)
504 H	Shāhrakht	Ni 41-09		U.S. Army	1971	1:250,000	1501	1	Joint OPS (JOGs)

Map No.	Title	Sheet No.	Author	Publisher	Date	Scale	Description		Size	Subject
505 H	Shāhrakht	Ni 41-09		U.S. Army	1971	1:250,000	1501 AIR	1		Joint OPS (JOGs)
506 H	Šīndand	Ni 41-10		U.S. Army	1967	1:250,000	1501	1		Joint OPS (JOGs)
507 H	Šīndand	Ni 41-10		U.S. Army	1967	1:250,000	1501 AIR	1		Joint OPS (JOGs)
508 H	Titān	Ni 41-11		U.S. Army	1968	1:250,000	1501	1		Joint OPS (JOGs)
509 H	Titān	Ni 41-11		U.S. Army	1968	1:250,000	1501 AIR	1		Joint OPS (JOGs)
510 H	Khwāja Ṙawuf	Ni 41-12		U.S. Army	1968	1:250,000	1501	1		Joint OPS (JOGs)
511 H	Khwāja Ṙawuf	Ni 41-12		U.S. Army	1968	1:250,000	1501 AIR	1		Joint OPS (JOGs)
512 H	Gāzīk	Ni 41-13		U.S. Army	1969	1:250,000	1501	1		Joint OPS (JOGs)
513 H	Gāzīk	Ni 41-13		U.S. Army	1969	1:250,000	1501 AIR	1		Joint OPS (JOGs)
514 H	Farāh	Ni 41-14		U.S. Army	1968	1:250,000	1501	1		Joint OPS (JOGs)
515	Farāh	Ni 41-14		U.S. Army	1968	1:250,000	1501 AIR	1		Joint OPS (JOGs)

Map No.	Title	Sheet No.	Author	Publisher	Date	Scale	Description	Size	Subject
H									
516 H	Naw Zād	Ni 41-15		U.S. Army	1968	1:250,000	1501	1	Joint OPS (JOGs)
517 H	Naw Zād	Ni 41-15		U.S. Army	1968	1:250,000	1501 AIR	1	Joint OPS (JOGs)
518 H	Kajakī	Ni 41-16		U.S. Army	1969	1:250,000	1501	1	Joint OPS (JOGs)
519 H	Kajakī	Ni 41-16		U.S. Army	1969	1:250,000	1501 AIR	1	Joint OPS (JOGs)
520 H	Tukzār	Ni 42-01		U.S. Army	1968	1:250,000	1501	1	Joint OPS (JOGs)
521 H	Tukzār	Ni 42-01		U.S. Army	1968	1:250,000	1501 AIR	1	Joint OPS (JOGs)
522 H	Pule Khumṛi	Ni 42-02		U.S. Army	1969	1:250,000	1501	1	Joint OPS (JOGs)
523 H	Pule Khumṛi	Ni 42-02		U.S. Army	1969	1:250,000	1501 AIR	1	Joint OPS (JOGs)
524 H	Āhārīkār	Ni 42-03		U.S. Army	1970	1:250,000	1501	1	Joint OPS (JOGs)
525 H	Chitrāl	Ni 42-04		U.S. Army	1970	1:250,000	1501	1	Joint OPS (JOGs)

Map No.	Title	Sheet No.	Author	Publisher	Date	Scale	Description		Size	Subject
526 H	Šekhmiṛān	Ni 42-05		U.S. Army	1968	1:250,000	1501	1		Joint OPS (JOGs)
527 H	Šekhmiṛān	Ni 42-05		U.S. Army	1968	1:250,000	1501 AIR	1		Joint OPS (JOGs)
528 H	Bāmyān	Ni 42-06		U.S. Army	1969	1:250,000	1501	1		Joint OPS (JOGs)
529 H	Bāmyān	Ni 42-06		U.S. Army	1969	1:250,000	1501 AIR	1		Joint OPS (JOGs)
530 H	Kābul	Ni 42-07		U.S. Army	1970	1:250,000	1501	1		Joint OPS (JOGs)
531 H	Peshāwar	Ni 42-08		U.S. Army	1969	1:250,000	1501	1		Joint OPS (JOGs)
532 H	Oluswālī Ajrēstān	Ni 42-09		U.S. Army	1969	1:250,000	1501	1		Joint OPS (JOGs)
533 H	Ghazni	Ni 42-10		U.S. Army	1968	1:250,000	1501	1		Joint OPS (JOGs)
534 H	Ghazni	Ni 42-10		U.S. Army	1968	1:250,000	1501 AIR	1		Joint OPS (JOGs)
535 H	Gardēz	Ni 42-11		U.S. Army	1970	1:250,000	1501	1		Joint OPS (JOGs)
536	Kohat	Ni 42-12		U.S. Army	1973	1:250,000	1501	1		Joint OPS (JOGs)

Map No.	Title	Sheet No.	Author	Publisher	Date	Scale	Description		Size	Subject
H										
537 H	Kohāt	Ni 42-12		U.S. Army	1955	1:250,000	U502	1-AMS		Joint OPS (JOGs)
538 H	Oruzgān	Ni 42-13		U.S. Army	1969	1:250,000	1501	1		Joint OPS (JOGs)
539 H	Oruzgān	Ni 42-13		U.S. Army	1969	1:250,000	1501 AIR	1		Joint OPS (JOGs)
540 H	Ābe Istāda- I-Moquṛ	Ni 42-14		U.S. Army	1969	1:250,000	1501	1		Joint OPS (JOGs)
541 H	Ābe Istāda- I-Moquṛ	Ni 42-14		U.S. Army	1969	1:250,000	1501 AIR	1		Joint OPS (JOGs)
542 H	Wāna (Wāno)	Ni 42-15		U.S. Army	1970	1:250,000	1501	1		Joint OPS (JOGs)
543 H	Miānwāli	Ni 42-16		U.S. Army	1955	1:250,000	U502	1-AMS		Joint OPS (JOGs)
544 H	Churrai	NI 43-01		U.S. Army	1954	1:250,000	U502	1-AMS		Joint OPS (JOGs)
545 H	Gilgit	Ni 43-02		U.S. Army	1953	1:250,000	U502	2-AMS		Joint OPS (JOGs)
546 H	Chulung	Ni 43-04		U.S. Army	1953	1:250,000	U502	1-AMS		Joint OPS (JOGs)

Map No.	Title	Sheet No.	Author	Publisher	Date	Scale	Description		Size	Subject
547 H	Srinagar	Ni 43-06		U.S. Army	1954	1:250,000	U502	1-AMS		Joint OPS (JOGs)
548 H	Kargil	Ni 43-07		U.S. Army	1954	1:250,000	U502	2-AMS		Joint OPS (JOGs)
549 H	Leh	Ni 43-08		U.S. Army	1954	1:250,000	U502	2-AMS		Joint OPS (JOGs)
550 H	Rawalpindi	Ni 43-09		U.S. Army	1954	1:250,000	U502	2-AMS		Joint OPS (JOGs)
551 H	Punch	Ni 43-10		U.S. Army	1954	1:250,000	U502	1-AMS		Joint OPS (JOGs)
552 H	Anantnag	Ni 43-11		U.S. Army	1954	1:250,000	U502	1-AMS		Joint OPS (JOGs)
553 H	Martselang	Ni 43-12		U.S. Army	1953	1:250,000	U502	2-AMS		Joint OPS (JOGs)
554 H	Sargodha	Ni 43-13		U.S. Army	1954	1:250,000	U502	1-AMS		Joint OPS (JOGs)
555 H	Sialkot	Ni 43-14		U.S. Army	1954	1:250,000	U502	1-AMS		Joint OPS (JOGs)
556 H	Pathankot	Ni 43-15		U.S. Army	1954	1:250,000	U502	1-AMS		Joint OPS (JOGs)
557	Palampur	Ni 43-16		U.S. Army	1954	1:250,000	U502	2-AMS		Joint OPS (JOGs)

Map No.	Title	Sheet No.	Author	Publisher	Date	Scale	Description		Size	Subject
H										
558 H	Kerki	NJ 41-12		U.S. Air Force	1970	1:250,000	1501	1		Joint OPS (JOGs)
559 H	Kerki	NJ 41-12		U.S. Air Force	1981	1:250,000	1501 AIR	1		Joint OPS (JOGs)
560 H	Vozvyshennost' Karabil'	NJ 41-15		U.S. Air Force	1970	1:250,000	1501	1		Joint OPS (JOGs)
561 H	Sheberghān	NJ 41-16		U.S. Army	1967	1:250,000	1501	1		Joint OPS (JOGs)
562 H	Sheberghān	NJ 41-16		U.S. Army	1967	1:250,000	1501 AIR	1		Joint OPS (JOGs)
563 H	Ordzhonikidzeabad	NJ 42-07		U.S. Air Force	1970	1:250,000	1501	1		Joint OPS (JOGs)
564 H	Ordzhonikidzeabad	NJ 42-07		U.S. Army	1952	1:250,000	N502	1-AMS		Joint OPS (JOGs)
565 H	Kalai-Khumb	NJ 42-08		U.S. Air Force	1969	1:250,000	1501	1		Joint OPS (JOGs)
566 H	Kusai	NJ 42-08		U.S. Army	1952	1:250,000	N502	1-AMS		Joint OPS (JOGs)
567 H	Termez	NJ 42-09		U.S. Air Force	1970	1:250,000	1501	1		Joint OPS (JOGs)

Map No.	Title	Sheet No.	Author	Publisher	Date	Scale	Description		Size	Subject
568 H	Termez	NJ 42-09		U.S. Army	1952	1:250,000	N502	1-AMS		Joint OPS (JOGs)
569 H	Kurgan- Tyube	NJ 42-10		U.S. Air Force	1970	1:250,000	1501	1		Joint OPS (JOGs)
570 H	Kurgan- Tyube	NJ 42-10		U.S. Army	1952	1:250,000	N502	1-AMS		Joint OPS (JOGs)
571 H	Kulyab	NJ 42-11		U.S. Air Force	1970	1:250,000	1501	1		Joint OPS (JOGs)
572 H	Kulyab	NJ 42-11		U.S. Air Force	1981	1:250,000	1501 AIR	2		Joint OPS (JOGs)
573 H	Kulyab	NJ 42-11		U.S. Army	1952	1:250,000	N502	1-AMS		Joint OPS (JOGs)
574 H	Fazd̄zābād	NJ 42-12		U.S. Air Force	1970	1:250,000	1501	2		Joint OPS (JOGs)
575 H	Feyzābād	NJ 42-12		Defense Mapping Agency (DMA)	1981	1:250,000	1501 AIR	3		Joint OPS (JOGs)
576 H	Mazār-I- Sharīf	NJ 42-13		U.S. Army	1967	1:250,000	1501	1		Joint OPS (JOGs)
577 H	Qundūz	NJ 42-14		U.S. Army	1967	1:250,000	1501	1		Joint OPS (JOGs)

Map No.	Title	Sheet No.	Author	Publisher	Date	Scale	Description		Size	Subject
578 H	Khān Ābāq	NJ 42-15		U.S. Army	n.d. (1970?)	1:250,000	1501	1		Joint OPS (JOGs)
579 H	Ḍarrah-I-Khāš	NJ 42-16		U.S. Army	n.d. (1970?)	1:250,000	1501	1		Joint OPS (JOGs)
580 H	Ḍarrah-I-Khāš	NJ 42-16		U.S. Army	n.d. (1970?)	1:250,000	1501 AIR	1		Joint OPS (JOGs)
581 H	Garmchasma	NJ 43-09		U.S. Air Force	1969	1:250,000	1501	1		Joint OPS (JOGs)
582 H	Tokhtamysh	NJ 43-10		U.S. Air Force	1969	1:250,000	1501	1		Joint OPS (JOGs)
583 H	Tokhtamysh	NJ 43-10		U.S. Air Force	1969	1:250,000	1501 AIR	1		Joint OPS (JOGs)
584 H	T'A-Shih-K'U-Erh-Kan	NJ 43-11		U.S. Air Force	1969	1:250,000	1501 AIR	1		Joint OPS (JOGs)
585 H	Mastūj	NJ 43-13		U.S. Air Force	1967	1:250,000	1501	1		Joint OPS (JOGs)
586 H	Baltit	NJ 43-14		U.S. Air Force	1967	1:250,000	1501	1		Joint OPS (JOGs)

Six maps that were left out of numbering system and added are:

Khugiani – 2380

Qalat – 2381

Orzgan – 2382

Hokumate Sinkay, Afghanistan – 2480

Qarabaghi, Afghanistan – 2481

Alaqadari Sahjoy – 2482

APPENDIX B:

Master list of LIMDIS maps of the Afghanistan map collection from the US Army Corps of Engineers obtained in 2014

Table 1	2
Table 2	2
Table 3	3
Table 4	5
Table 5	13
Table 6	23
Table 7	24

Table 1 - List of general map files at all scales available for Afghanistan from US Army Corps of Engineers. All maps are indexed and retrievable on interactive base maps as electronic copies that can be printed out at various scales. Details of individual maps in this collection are listed separately in Appendix A and Tables 1-5.

Afghanistan GeoPDF Country Coverage; Unclassified LIMDIS (Limited Distribution); Release authorized to U.S. DoD contractors.

U.S. Army Core of Engineers (Total new maps 741)

DVD Ver 1.2; Vol 1

ONC (Operational Navigation Charts)	1:1,000,000 Topographic Maps (4)
TPC (Tactical Pilotage Charts)	1:500,000 Topographic Maps (7)
JOG (Joint Operations Graphics)	1:250,000 Topographic Maps (65)
TLM50 (Topographic Line Maps)	1: 50,000 Topographic Maps (359)
Focus on border areas & Pashtun regions	
(Some Soviet-era source maps w/o translations)	
ICM (Image City Maps)	1:25,000 & 1:12,500 Orthophotographs (24)
CG (City Graphics Maps)	1:12,500 Topographic Maps (8)

DVD Ver 1.2; Vol 2

TLM100 (Topographic Line Maps)	1: 100,000 Topographic Maps (274)
--------------------------------	-----------------------------------

Table 2 - List of Afghanistan maps: (A) ONC (Operational Navigation Charts) at 1:1,000,000 scale; and (B) TPC (Tactical Pilotage Charts) at 1:500,000 Topographic Maps available as electronic copies from US Army Corps of Engineers interactive DVD. These maps are sold freely over the counter and so are not classified as Limited Distribution (LIMDIS).

(A) ONC charts

- ONCXXG06_geo.pdf
- ONCXXG07_geo.pdf
- ONCXXH07_geo.pdf
- ONCXXH08_geo.pdf

(B) TPC maps

- TPCXXG06A
- TPCXXG06B

TPCXXG06C
TPCXXG06D
TPCXXG07A
TPCXXH07B
TPCXXH08A

Table 3 - List of Joint Operations Graphic (JOG) maps of Afghanistan and border areas produced at scales of 1:250,000 available as electronic copies. These maps are listed in the master list in appendix 1.9A.

1501 ANG 4110	Gwadar, Pakistan; Iran
1501 ANH 4101	Zabol, Iran; Afghanistan
1501 ANH 4104	Qandahar, Afghanistan
1501 ANH 4106	Chahr Borjak, Afghanistan; Iran
1501 ANH 4107	Taghaz, Afghanistan
1501 ANH 4108	Mandowzi, Afghanistan
1501 ANH 4109	Zahadan, Iran; Pakistan; Afghanistan
1501 ANH 4111	Jelejel, Afghanistan; Pakistan
1501 ANH 4201	Spin Buldak, Afghanistan; Pakistan
1501 ANH 4202	Qamruddin Karez, Pakistan; Afghanistan
1501 ANH 4203	Zhob, Pakistan; Afghanistan
1501 ANH 4205	Quetta, Pakistan; Afghanistan
1501 ANH 4909	Mastung, Pakistan; Afghanistan
1501 ANI 4101	Torbat-e Jam, Iran; Afghanistan; USSR
1501 ANI 4102	Kushka, Turkmenistan; Afghanistan
1501 ANI 4103	Bala Morgab, Afghanistan; USSR
1501 ANI 4104	Meymaneh, Afghanistan
1501 ANI 4105	Taybad, Iran; Afghanistan
1501 ANI 4106	Herat, Afghanistan
1501 ANI 4108	Chagcharan, Afghanistan

1501 ANI 4109	Shahrakht, Iran; Afghanistan
1501 ANI 4110	Shindand, Afghanistan
1501 ANI 4111	Titan, Afghanistan
1501 ANI 4112	Khvajeh Ra'uf, Afghanistan
1501 ANI 4113	Gazik, Iran; Afghanistan
1501 ANI 4116	Kajaki, Afghanistan
1501 ANI 4201	Tukzar, Afghanistan
1501 ANI 4204	Chitral, Pakistan; Afghanistan
1501 ANI 4205	Yakawlang, Afghanistan
1501 ANI 4206	Bamiyan, Afghanistan
1501 ANI 4207	Kabul, Afghanistan; Pakistan
1501 ANI 4208	Peshawar, Pakistan; Afghanistan
1501 ANI 4211	Gardiz, Afghanistan; Pakistan
1501 ANI 4212	Kohat, Pakistan; Afghanistan
1501 ANI 4213	Oruzgan, Afghanistan
1501 ANI 4214	Ab-e Istadeh-ye Moqur, Afghanistan
1501 ANI 4215	Wana, Pakistan; Afghanistan
1501 ANJ 4112	Terki, Turkmenistan; Afghanistan
1501 ANJ 4115	Vozvyshennost' Karabil' Turkmenistan; Afghanistan
1501 ANJ 4208	Kalai Khumb, Tajikistan; Afghanistan
1501 ANJ 4209	Termez, Uzbekistan; Afghanistan; Turkmenistan
1501 ANJ 4210	Kurgan-Tyube, Soviet Union; Afghanistan
1501 ANJ 4211	Kulyab, Soviet Union; Afghanistan
1501 ANJ 4212	Feyzabad, Afghanistan; Soviet Union
1501 ANJ 4309	Garmchasma, Soviet Union; Afghanistan
1501 ANJ 4310	Tokhtamysh, Tajikistan; China; Afghanistan; Pakistan
1501 ANJ 4313	Mastuj, Pakistan; Afghanistan; Soviet Union
1501 ANJ 4314	Baltit, Pakistan; Afghanistan; China

1501 ANH 4102	Asle Chakansur, Afghanistan; Iran
1501 ANH 4103	Lashkar gah, Afghanistan
1501 ANH 4109	Daryacheh-ye Hamun, Iran; Afghanistan
1501 ANH 4112	Ahmad Wal, Pakistan; Afghanistan
1501 ANH 4114	Nokkundi, Pakistan; Iran
1501 ANI 4107	Qal'eh-ye Now, Afghanistan
1501 ANI 4114	Farah, Afghanistan
1501 ANI 4115	Now Zad, Afghanistan
1501 ANI 4202	Pol-e Khomri, Afghanistan
1501 ANI 4203	Charikar, Afghanistan
1501 ANI 4208	Ajrestan, Afghanistan
1501 ANI 4210	Ghazni, Afghanistan
1501 ANJ 4118	Sheberghan, Afghanistan
1501 ANJ 4213	Mazar-e Sharif, Afghanistan
1501 ANJ 4214	Baghlan, Afghanistan; USSR
1501 ANJ 4215	Khanabul, Afghanistan
1501 ANJ 4216	Jorm, Afghanistan; Pakistan; USSR

Table 4 - LIMDIS map list of Topographic Line Maps (TLM100) 1:100,000 Series of Afghanistan and border areas. These maps are also listed in Appendix 1.9A.

N to S		North to South		Read West to East	Date
Folder A	1	U611X	2793	Meymik	1986
			2793	Jamarj-e Bala	1986
	2		2792	Shingan	1986
			2892	Basenj	1986
			1891	Khan-e Chahr Bagh	1986
			1991	Dinar	1986
			2091	Qarqin	1986
			2191	Qarchi Gak	1986
			2291	Kaldar	1986

	3		2491	Emam Saheb (cut off meanders)	1986
			2591	Khvajeh Ghar	1986
			2691	Rostaq	1986
			2791	Feyzabad	1986
			2891	Parkhaw	1986
			3191	Gaz khan	1986
			3291	Sarhad (Lake Sari Qul)	1986
			3391	Tas Seri (Lake Chakmaktin Kol)	1986
			3491	Xol-i-Karasu	1986
Folder B			1890	Andkhvoy	1986
			1990	Sheberghan	1986
			2090	Aqchah	1986
			2190	Mazar-e Sharij	1986
	4		2290	Kholm	1986
			2390	Kolukh Tappeh	1986
			2490	Konduz	1986
			2590	Taloqan	1986
			2690	Farkhar	1986
			2790	Kash Darrah	1986
			2890	Jorm	1986
			2990	Qazi Deh	1986
			3090	Khandad (1)	1986
	5		1789	Jalaier	1986
			1889	Dowlatabad	1986
			1989	Sar-e Pol	1986
			2089	Doaba	1986
			2189	Keshendeh	1986
			2289	Shah Anjir	1986
			2389	Samangan	1986
			2489	Baghlan	1986
			2589	Nahrin	1986
			2689	Khowst Va Fereng	1986
			2789	Koran Va Monjan	1986
			2889	Darya-ye Sanglich	1986
			2989	U622X2989 Shoghor	(Tirich Mir) 2003
Folder C	6	N6020X	1275	Chakmaklychanga	1991
		U611X	1688	Bala Murghab	2001
			1788	Ghormac	2001

			1888	Qaysar	2001
			1988	Meymaneh	1986
			2088	Belcheragh	1986
			2188	Qal'eh Shahr	1986
			2288	Tokzar	1986
			2388	Tarkhoj	1986
			2488	Qal'a	2001
			2588	Doab	1989
			2688	Ghazimard	1970
			2788	Pol-e Khomri	2001
			2888	Banu	1970
			2988	Sarab	1988
			3088	Kur-Tetab (Anjuman Pass)	1970
			3188	Welo	1970
			3288	Barge Matal	1970
		U622X	3388	Chitral	1997
	7	U611X	1287	Kareyz-e Elyas	1986
			1387	Tutaci	1966
			1487	Towraghondi	2004
			1587	Sang Ates Bulogha	1986
			1687	Moqur	1966
			1787	Saido Khan	1966
			1887	Cahartaq	1986
			1987	Lash	1986
			2087	Hastomin	1986
			2187	Wajan	1986
			2287	Peygowlah	1986
			2387	Daryah Cast	1986
			2487	Darrahe Daymirdad	1968
			2587	Do Ab-e Mikh-e Zarrin	1986
			2687	Sayelan	1970
			2787	Kham	2001
			2887	Charikar	2001
			2987	Astaneh	1970
			3087	Gadwal	1970
			3187	Kantiway Ulya	2001
			3287	Asmar	1992
		U622X	3387	Dir	2005
Folder D	8	K653X	8159	Taybad	1993

		U611X	1286	Kohistan	1986
			1386	Qara Bagh	1966
			1486	Dazwari	2001
			1586	Kusk-I Kohna	1966
			1686	Qal'a-I Naw	1968
			1786	Khayrkhana	1968
			1886	Marghozar	1986
			1986	Syah Ab	1986
			2086	Chughcharan	1986
			2186	Dowlat Yar	1986
			2286	La'I Va Sar Jangal	1986
			2386	Yakawlang	1986
			2486	Nawe Tundaki (Bandi Amir)	1988
			2586	Bamian	1986
			2686	Sar-e Kowtal	1970
			2786	Paghman	1982
			2886	Kabol	2001
			2986	Sorubay	2001
			3086	Alishang	2005
			3186	Shahgah	2001
		U622X	3286	Nawagai	1992
	9	U611X	1185	Kowl-e Namaksar	1986
			1285	Ghuryan	2001
			1385	Zindajan	1966
			1485	Heart	2001
			1585	Karukh	1966
			1685	Caharmahale Obe	1968
			1785	Chesht-e Sharif	1986
			1885	Nasfanj	1986
			1985	Khvajegan	1986
			2085	Gorzarak	1986
			2185	Garm Ab-e Olya	1986
			2285	Sheykh Miran	1986
			2385	Qarghori	1969
			2485	Panjaw	1968
			2585	Behsud	1986
			2685	Dahan-e Shuravak	1988
			2785	Towp	2001
			2885	Kabol (South)	2001

			2985	Azrow	2005
			3085	Jalalabad	2005
			3185	Gerdi	2004
		U622X	3285	Landi Kotal	1994
Folder E	10	U611X	1184	Homa Kuh	1986
			1284	Kaftari	1986
			1384	Dewalan	1968
			1484	Adraskan	2002
			1584	Karavcheh	1982
			1684	Tagawe Sesyab	1989
			1784	Deh-e Akheri	1988
			1884	Teywarah	1988
			1984	Pasaband	1986
			2084	Surkhak	1986
			2184	Khadir	1986
			2284	Pato	1986
			2384	Gholam	1988
			2484	Oluswali Ajrestan	1988
			2584	Qarga-e Bala (Dashti Nawar)	1988
			2684	Ghazni	2001
			2784	Ramak	2001
			2884	Gardiz	2002
			2984	Chamkani	2004
			3084	U622X 3084 Parachinar	1988
		U622X	3184	Mandan	1995
	11	U611X	1183	Kalateh-ye Nazar Khan	1986
			1283	Peshin Jan	1986
			1383	Okwal	1981
			1483	Shindand	2001
			1583	Qaryeh-ye Azab	1982
			1683	Bar Azow	1988
			1783	Por Chaman	1988
			1883	Zar Bid	1986
			1983	Yaman	1986
			2083	Kajran	1986
			2183	Khod	1986
			2283	Hokumati Gizaw	1969
			2383	Chaqmaq	1969
			2483	Hajji	1988

			2583	Luman (South Dashti Nawar)	1988
			2683	Nani	2001
			2783	Muskhel	2001
			2283	Sar Hawzeh	1986
			2983	Khowst	1986
			3083	Landar	1970
Folder F	12		1182	Rud-e Tag-e Namadi	1987
			1282	She Chahi	1986
			1382	Anar Darreh (Sheykhabad)	1986
			1482	Shewan	2001
			1582	Dizak	2001
			1682	Gor Zanak	1968
			1782	Hokumat-e Por Chaman	1988
			1882	Khani Kheyl	1988
			1982	Emam Robat	2001
			2082	Deh Rawod	2001
			2182	Tarin Kowt	2001
			2282	Sarab	2001
			2382	Oruzgan	2002
			2482	Alaqadari Sahjoy	1969
			2582	Moquor (Abi Istada)	1968
			2682	Khvoshamand	1968
			2782	Owmneh	1988
			2882	Organ-e Kalan	1988
		U622X	2982	Razmak	2005
	13	K653X	8154	Mahrud	1992
		U611X	1281	Do Qal'eh	1987
			1381	Toja	1986
			1481	Farah	2001
			1581	Markaz-e Hokumat-e Soltan-e Bakva	2001
			1681	Delaram	1968
			1781	Waser	1958; 1967; 1968
			1881	Now Zad	2001
			1981	Musa Qal'eh	2001
			2081	Kajaki Olyah	2002
			2181	Shawiz	1988
			2281	Tanachuy	2002
			2381	Qalat	1958; 1967; 1969

			2481	Qarabaghi	1958; 1967; 1969
			2581	Zarinkhel (Abi Istada)	1958; 1967; 1969
			2681	Wazah Khwah	2002
			2781	Alakzi	1957-58; 1967; 1969; 1988
			2881	Khwajagi Kala	1987
Folder G	14	K653X	8153	Kuh-e Darband-e Bad	1992
		U611X	1280	Hamun-e Saberi	1986
			1380	Lash-e Joveyn	1987
			1480	Khospas Rud	1986
			1580	Lowkhi	1986
			1680	Kotalak	1957-58; 1967; 1968
			1780	Tal Kala	1957-59; 1967; 1968
			1880	Lashkhar Gah	2002
			1980	Gereshk	2001
			2080	Kashk-e Nokhowd	2001
			2180	Kandahar	2001
			2280	Lowy Deh	2002
			2380	Khugyani	1958; 1967; 1969
			2480	Hokumate Sinkay	1958; 1967; 1969
			2580	Alaqadari Somulzay	1953; 1961; 1967; 1970
			2680	U622X 2680 Tarwe	1970
			2780	Rodakay	1986
		U622X	2880	Sambaza	1991
	15	K653X	8152	Bandan	1992
			8252	Zabol	1992
		U611X	1379	Kang	1986
			1479	Chakansur	1986
			1579	Luy Radzay	1986
			1679	Dashte Margo	1968
			1779	Gawarnaz Ghundyan	1968
			1879	Hazar Joft	1986
			1979	Daste Sarsah	1969
			2079	Do Ab	2001
			2179	Nevay Deh	2001
			2279	Margian	1981
			2379	Mullah Wali Waleh	1970
			2479	Sondarzay	1992
		U622X	2579	Murgha Faqirzai	1991

Folder H	16	K653X	8251	Daryacheh-ye Hamun	1993
		U611X	1378	Qal'eh-ye Fath	1986
			1478	Zirat-e Amiran Saheb	1986
			1578	Dasht-e Margow	1986
			1678	Koh-Car Mandeh	1986
			1778	Qal'eh-ye Now	1986
			1878	Mian Poshteh	1986
			1978	Wasel Nawer	1969
			2078	Dago Nawer	1969
			2178	Molahasan Kendwale	1969
			2278	Aduzi	1970
	17		1277	Dasht-e Towbeh	1986
			1377	Bandar	1986
			1477	Chahr Borjak	1986
			1577	Palalak	1986
			1677	Khvajeh Ali Sofla	1986
			1777	Kasi Dast	1986
			1877	Nowk Tsah	1986
			1977	Baman (Bahman) Chah	1986
			2077	Cotok Ca	1969
			2177	Mandozi	1969
			2277	Hokumati Sorawak	1970
	18	K653X	8149	Hormak	1997
		U611X	1276	Gozar-e Shah	1986
			1376	Gowd-e Zereh	1986
			1476	Sora-I Hamun	1986
			1576	Regestane Saycan	1986
			1676	Daste Tazipat	1986
			1776	Tahana-I Mamo	1986
			1876	Salian	2004
			1976	Nalaf Tsahan	1986
			2076	Mazar Reg	1986
			2176	Reg Alaquadari	1986
		U622X	2276	Nushki	1991

Table 5 - LIMDIS map list of Topographic Line Maps (TLM50) 1:50,000 Series of Afghanistan and border areas. These maps are also listed in the master list in Appendix 1.9A.

Edition	Name	Map Number	Date
Soviet			
Wakhan	Derdi	J-43-114-A	1986
	Babag Khundi-Ziarat	J-43-113-B	1986
	Surkiyeng	J-43-113-A	1986
	Buattar	J-43-113-V	1986
	Shuindzh	J-43-112-B	1986
	Shovarshur	J-43-112-A	1986
	Nirs	J-43-111-B	1986
	Yur	J-43-111-A	1986
	Sust	J-43-110-B	1986
	Shost	J-43-110-G	1986
	Rua	J-4-110-V	1986
	Zong	J-43-98-V	1987
	Vrang	J-43-97-G	1986
Soviet			
Badakhshan	Bakrushan	J-42-83-B	1987
	Rushan	J-42-84-A	1986
	Mazarbaykhodzha	J-42-83-G	1986
	Sokhcharv	J-42-84-V	1987
	Dimurgon	J-42-95-B	1987
	Buved	J-42-96-A	1990
	Pish (Shewa)	J-42-95-G	1987
	Andarob	J-42-107-B	1986
	Shanbedekh	J-42-107-G	1986
2-NIMA	Kamar	2692 I	1964
	Wesk	2692 II	1964
	Jar Basi	2692 III	1964
	Kaltat	2592 II	1964
	Koh-i Surbaytal	2391 II	1964
	Kocha Qum	2391 III	1964
	Kahm Ab (East)	1991 I	1964
	Jalajin (West)	1791 II	1964
	Bagh-i-Bustan	1790 I	1964

	Shaikha (West)		1790 II	1964
Soviet	Dervezekem		J-41-141-A	1977
	SOP. Boyevykh Stolknoveniy		J-41-141-V	1986
	Pakana		J-41-140-G	1986
1-DMA	Taybad (Iran)	K753	8159 KK	1985
3-NGA	Izh (Pakistan)	U722	3388 IV	2001
	Azuk	U722	3288 I	2004
	Pachigram	U711	3288 IV	2001
	Panam		3188 I	2001
	Dahan-e Aw		3188 IV	2001
	Bumboret (Pakistan)		3388 III	2004
	Barg-e Matal		3288 II	2004
	Paprowk		3288 III	2001
	Kuh-e Ghazghar		3188 II	2001
	Kuh-e Dasht-e Kalagay		3188 III	2001
	Arandu (Kunar)		3387 IV	2004
	Kamdish		3287 I	2001
	Samalam Band		3287 IV	2001
	Kantiwa Sofla		3187 I	2001
	Kantiwa-ye 'Olya		3187 IV	2001
	Pesenta		3087 I	2001
	Tupkaneh		3087 IV	2001
Soviet	Birkot		I-42-36-A	1983
	Pitgal (Kunar)		I-42-24-V	1985
	Dzhambatay		I-42-36-V	1983
3-NGA	Shahikot	U722	3387 III	2004
	Asmar		3287 II	2001
	Shengesh		3287 III	2001
	Aranas		3187 II	2001
	Taranik		3187 III	2001
	Nilaw		3087 II	2001
	Kewesht		3087 III	2001

	Maia (Pakistan)	U711	3386 IV	2004
	Kaga		3286 I	2004
	Asadabad		3286 IV	2004
	Nangalam		3186 I	2001
	Digal		3186 IV	2001
	Alingar		3086 I	2001
	Eslamabad		3086 IV	2004
	Shagai		3286 III	2004
	Chowkay		3186 II	2001
	Sowtan		3186 III	2001
	Shahlatak		3086 II	2001
	Mehtar Lam		3086 III	2001
	Koda Khel		3285 IV	2004
	Gowshtah		3185 I	2001
	Samar Kheyl		3185 IV	2001
	Jalalabad		3085 I	2001
	Mansur Kala		3085 IV	2001
	Khadakheyl		2985 I	2001
	Jorowbay		2985 IV	2001
	Qal'eh-ye Mohammed Mohsen		2885 I	2001
	Kabol (South)		2885 IV	2001
5-NGA	Landi Kotal-Khyber Pass	U722	3285 III	2004
3-NGA	Hezarnaw	U711	3185 II	2004
	Chehelgazi		3185 III	2001
	Manu		3085 II	2001
	Chenargay		3085 III	2004
	Khaneh		2985 II	2004
	Azrow		2985 III	2002
	Zarghun Shahr		2885 III	2001
4-NGA	Bizoti	U722	3184 I	2004
	Sham Kanri		3184 IV	2004
3-NGA	Takhte		3084 I	2004
	Chamkani	U711	2984 I	2004
1-GSGS	Khan Neshin Ghar (UK) Mislocated		1777-4	2005

3-NGA	Ali Kheyl		2984 IV	2002
	Chino Sar		2884 I	2001
	Padkhvab-e Shahneh		2884 IV	2001
3-NGA	Mochay Kalay		3084 I	2004
	Bukhtay		2984 II	2004
	Kharguray		2984 III	2004
	Waluswali Seyyed Karam		2884 II	2001
	Gardiz		2884 III	2001
	Manduri	U722	3083 I	2004
	Lakan	U711	3083 IV	2004
	Khowst		2983 I	2000
	Delpuri		2983 IV	2000
	Shavak		2883 I	2001
	Begwal		2883 IV	2001
	Kolagu		2783 I	2001
	Sarden Band		2783 IV	2002
1-GSGS	Qarabagh (UK)	U711	2083-1	2006
	Sinay (UK)		2083-4	2006
	Saheb Lat (UK) Mislocated		1178-1	2006
	Eskawchah (UK)		1983-1	2006
	Kharnak		1983-4	2006
3-NGA	Miram Shah	U722	3083 III	2004
	Tani	U711	2983 II	2004
4-NGA	Speyrah		2983 III	2004
1-NGA	Speyrah (Dari)	U711S	2983 III	2006
3-NGA	Bazikani	U711	2883 II	2004
	Sar Hawzeh		2883 III	2001
1-NGA	Sar Hawzeh	U711S	2883 III	2006
-NGA	Patanah (Mislocated on index)	U711	2783 II	2001
3-NGA	Mowshkeyl		2783 III	2001
1-GSGS	Kajran (UK)	U711	2083-2	2006
	Baghran (UK)		2083-3	2006
	Baghal (UK)		1983-2	2006
	Kouldom (UK)(Mislocated)		1983-3	2006

5-NGA	Tarmova	U722	2983IV	2004
3-NGA	Ster Gyan	U711	2882 I	2004
	Orgun-e Kalan		2882 IV	2002
	Owmneh		2782 I	2000
	Baki Kheyl		2782 IV	2000
1-NGA	Zarghun Shahr		2682 I	2002
	Saki Kheyl		2682 IV	2002
	Moqur		2582 I	2002
	Shinkay		2582 IV	2002
	(Gap-one missing map)			
	Jangali		2482 IV	2002
	Qaryeh-ye Baki		2382 I	2002
	Qaryeh-ye Baki (Dari)	U711S	2382 I	2006
	Oruzgan	U711	2382 IV	2002
	Oruzgan (Dari)	U711S	2382 IV	2006
	Siah Ghar	U711	2282 I	2002
	Siah Ghar (Dari)	U711S	2282 I	2006
	Sarab	U711	2282 IV	2002
	Qal 'Eh-ye Now		2182 I	2002
3-NGA	Sakhar		2182 IV	2002
	Yawmanay		2082 I	2001
	Saylbin		2082 IV	2002
1-GSGS	Bashleng (UK)		1982 I	2006
	(Gap-one missing map)			
	Barzari (UK)		1882 I	2006
3-NGA	Shkin		2882 II	2004
	Aghagol Kalay		2882 III	2002
	Gowmal Kalay		2782 II	2000
	Faqiranow Kalay		2782 III	2000
1-NGA	Jalalzi		2682 II	2002
	Khvoshamand		2682 III	2002
2-NGA	Dand		2582 II	2002
1-NGA	Azamat		2582 III	2002
	Shah Juy		2482 II	2002
	Niknam		2483 III	2002
	Day Chupan		2382 II	2002
3-NGA	Davudsay		2382 III	2002

	Tarin Kowt		2182 II	2002
	Kesh Khenjak		2182 III	2002
	Deh Rawod		2082 II	2001
	Shiray		2082 III	2002
	Rowshanabad		1982 II	2001
	Baghatay		1982 III	2001
	(Gap-missing map)			
1-GSGS	Kadalak (UK)		1882 III	2000
3-NGA	Sholam	U722	2881 I	2004
	Khvajehgi	U711	2881 IV	2004
	Ba'I Khan Kay		2781 I	2000
	Shawzeh Katsownah		2781 IV	2000
1-NGA	Jani KheyI		2081 I	2002
	(Gap-missing map)			
	Jamal KheyI (Abi Istada)		2581 I	2001
	Muriani		2581 IV	2001
	(Gap-missing map)			
	Ebrahim KheyI		2481 IV	2002
	Braj		2381 I	2002
3-NGA	Qareh Bid		2381 IV	2002
	Lajar		2281 I	2002
	Tanachuy		2281 IV	2002
	Ghanigay Kalay		2181 I	2001
	Bagh-e Aqa		2181 IV	2001
	War Jan		2081 I	2001
	Alaqehdari Kajaki		2081 IV	2001
	Musa Qal'eh		1981 I	2001
	Jahazi		1981 IV	2001
1-GSGS	Now Zad (UK)		1881-1	2006
	Qaryeh-ye Fulad (UK)		1881-4	2006
	Gorazan (UK)		1781-1	2006
	Seh Gusheh-ye Shomali (UK)		1781-4	2006
	(Gap-missing map)			
3-NGA	Khan Kot	U722	2881 II	2004
	Golan Menah	U711	2881 III	2002
	De Kariz Kalay		2781 II	2000
	Alakzay		2781 III	2000
1-NGA	Wazah Khwah		2681 II	2002

	Shebi Kheyl		2681 III	2002
	Shiran Kheyl		2581 II	2001
	Nilay		2581 III	2001
	(Gap-missing map)			
	Spin Ghbargah		2481 III	2002
	Qalat		2381 II	2002
	Ramazi Qalay		2381 III	2002
	Powpulzow Selam		2281 II	2002
	Hasanzay		2281 III	2002
3-NGA	Gonbad		2181 II	2001
	Chenar		2181 III	2001
	Chenar (Dari)	U711S	2181 III	2006
	Atalay	U711	2081 II	2001
	Bahram		2081 III	2001
5-GSGS	Sangin (UK)		1981-2	2006
3-NGA	Lashkarak		1981 III	2001
1-GSGS	Qaryeh-ye Barang (UK)		1881-2	2006
	Biabanak (UK)		1881-3	2006
	Margozar (UK)		1781-2	2006
	Puzagi Gharbi (UK)		1781-3	2006
	Delaram (UK)		1681-2	2006
4-NGA	Sambaza	U722	2880 I	2004
3-NGA	Naray	U711	2880 IV	2004
	Jugyan		2780 I	2002
	Masizi		2780 IV	2004
1-NGA	Tarwah		2680 I	2005
	Tarhi Kalay		2680 IV	2005
	Basowkheyl Wolah		2580 I	2003
	Alagehdari-ye Shamulzai		2580 IV	2003
	Shinkay		2480 I	2001
	Shinkay (Dari)	U711S	2480 I	2006
	Omar Zai	U711	2480 IV	2004
	Mamu Kalay		2380 I	2004
3-NGA	Salamjan Kalay		2380 IV	2002
	Shahi Kalay		2280 I	2002
	Sarwar Jan Kalay		2280 IV	2002
	Khvajeh Molk		2180 I	2001
	Mondah Gak		2180 IV	2001

	Ziarat-e Shah Maqsud		2080 I	2001
	Chineh		2080 IV	2001
	Tambah		1980 I	2001
4-GSGS	Geresk (UK)		1980-4	2006
1-GSGS	Gholam Dastagir Kalay (UK)		1880-1	2005
	Chahar Ab Dusht (UK)		1880-4	2005
	Tall Kala (UK)		1780-1	2005
	Tall-e Aspays Dasht (UK)		1780-4	2005
	Amir Parwi Ziarat (UK)		1680-1	2006
4-NGA	Uzhd Ghwazhai	U722	2880 III	2004
3-NGA	Rudakay		2780 II	2004
	Samtullah Ziarat		2780 III	2004
1-NGA	Qamruddin Karez		2680 II	2005
	Kanroki		2680 III	2005
	Nabarhu	U711	2580 II	2005
	Rashid Qal 'eh		2580 III	2005
	Alaqehdari-ye Atghar		2480 II	2004
	Khugianay		2480 III	2004
	Khugianary (Dari)	U711S	2480 III	2006
3-NGA	Gari Kalay	U711	2380 II	2003
	Khugyani		2380 III	2002
	Shanakhti Kalay		2280 II	2002
	Manji Kalay		2280 III	2002
	Mandi Sar		2180 II	2001
4-GSGS	Kandahar (UK)		2180-3	2005
	Bazar-e Panjva 'i (UK)		2080-2	2005
3-NGA	Kashk-e Nokhowd		2080 III	2001
	Akhtaray		1980 II	2001
	Juy-e Shahi		1980 III	2001
1-GSGS	Lashkar Gah (UK)		1880-2	2005
	Marjah (UK)		1880-3	2005
	Shami Chah (UK)		1780-2	2006
1-NGA	Khano China	U722	2579 I	2005
	Zowr Kariz	U711	2579 IV	2005
	Derkay		2479 I	2004
	Angizay		2479 IV	2005
3-NGA	Yowlar		2379 I	2004

	Bukah		2379 IV	2002
	Kowghay		2279 I	2002
	Kowghay (Dari)	U711S	2279 I	2006
	Makwan Kalay	U711	2279 IV	2002
	Makwan Kalay (Dari)	U711S	2279 IV	2006
	Nevay Deh	U711	2179 I	2001
	Ranaway		2179 IV	2001
	Talukan		2079 I	2001
	Do Ab		2079 IV	2001
	Shami Mandah		1979 I	2001
	Kala Putay		1979 IV	2001
	(Gap-missing map)			
1-GSGS	Haji Baha Od Din (UK)		1879 IV	2005
	(Gap-two missing maps)			
	Telah Khazan Tale (UK)		1679-1	2006
1-NGA	Molla Vali-ye Valeh		2379 III	2005
	Spin Buldak		2279 II	2004
3-NGA	Kshatah Mil		2279 III	2000
	Hasanzo Kalay		2179 II	2001
	Karaki Rig		2179 III	2001
	Bangrishah Rig		2079 II	2001
	Sorkh Dasht		2079 III	2001
	Akhvondzadeh Dasht		1979 II	2001
	Atraf Nawar		1979 III	2001
1-GSGS	Asadollah Khan Kala (UK)		1879-2	2005
	Darvishan (UK)		1879-3	2005
	Rud-e Chah Mandeh (UK)		1779-2	2006
	Nabi Chah (UK)		1779-3	2006
	Wulow Talah (UK)		1679-2	2006
2-NIMA	Khojak Pass	U722	2378 IV	1959
	(Gap in map row)			
1-GSGS	Wasel Nawar (UK)	U711	1978-4	2006
	(Gap-one missing map)			
	Kuchnay Darvishan (UK)		1878-4	2005
	(Gap-one missing map)			
	Khodaynazar		1778-4	2006
	Kheyraabad Dasht		1678-1	2005

	Seyyed Nur Pat		1678-4	2006
	Wasel (UK)		1978-3	2006
	(Gap in map row)			
	Mohammad Rahim Kalary (UK)		1878-3	2005
	Pay Banader (UK)		1778-2	2005
	Qal'eh-ye Now (UK)		1778-3	2005
	Taghaz (UK)		1678-2	2005
	Sardari Pat (UK)		1678-3	2006
	Rhino HLZ (2001 landing zone)		1977-4	2006
	De Tsahanu Kadal (UK)		1877-1	2006
	(Gap in map row)			
	Bagat Dasht (UK)		1771-1	2005
	(Gap in map row)			
	Malakhan		1671-1	2005
	Kashi Dasht (UK)		1777-2	2005
	Kad Dasht (UK)		1777-3	2006
	Jalakhan (UK)		1677-2	2005
	Lech (UK)		1677-3	2005
	Palalak (UK)		1577-2	2005
	Rudbar (UK)		1577-3	2006
	Luy Morghani Ghar (UK)		1976-4	2006
	Dasht-i Omar Mazhi (UK)		1876-1	2006
	Yar Mohammad (UK)		1876-4	2006
	Suru Ghar (UK)		1776-1	2005
	Marak Dasht (UK)		1776-4	2006
	Rigestan-e Laredam (UK)		1676-1	2006
	Saheh-ye Rig-e Mazanpat (UK)		1676-4	2006
	Shah Esmail (UK)		1876-2	2006
	Dasht-e Ghur (UK)		1876-3	2006
	Dasht-e Mamu (UK)		1776-2	2005
	Gudri Rig (UK)		1776-3	2005
	Shahidan (UK)		1676-2	2006
	Tappeh Kuhha-ye Bayn (UK)		1673-3	2006
	Poshtehha-ye Rigi-ye Warudu (UK)		1576-2	2006

	Ghondiha-ye Derajab (UK)		1576-3	2006
3-GSGS	Bahramchah (East) (UK)	U722	1875-4	2006
1-GSGS	Bahramchah (West) (UK)	U711	1775-1	2006
	Halidi (UK)		1775-4	2006
	Patkok (UK)	U722	1675-1	2006
	Kuh-e Kamargar (UK)		1675-4	2006
	Ghariba (UK)		1575-1	2006
Soviet	Per. Katon-Kaduri		H-41-92-G	1985
Af-Pak	Malik Ponikhom		H-41-92-V	1984
Border	Pogr. Zast. Dzheledzhil		H-41-91-G	1985
	Kamargar		H-41-91-V	1985
	Chochu		H-41-90-G	1985
	Vysota 1138		H-41-90-V	1983
	Vysota 832		H-41-89-G	1985
	Vysota 894		H-41-89-V	1983
Af-Iran Border Area (North to South)				
1-DMA	Hamun-e Saberi (West)	K753	8252 IV	1986
	Hamun-e Saberi (East)	K753	8252 I	1986
	(Gap in maps)			
1-GSGS	Dust Mohammad Khan (UK)	U711	1397-2	2006
	Zaranj (UK)		1387-1	2006
	(Gap in maps)			
1-DMA	Hasan Khan	K753	8251 II	1986
2-NIMA	Lavari Ab	K753	8150 II	1986
1-TPC	Hormak	K753	8149 I	1969

Table 6 - Urban City Graphic (GC) maps and Image City Maps (ICM) orthophotographs of Afghanistan at scales of 1:12,500. Available on disk from US Army Corps of Engineers, but classified as of Limited Distribution (LIMDIS). These maps are also listed in Appendix 1.9A.

(A) City Graphics (GC); WGS 84

1. Series N9015; Khorough, Tajikistan; 1-NIMA.
2. Series U911; Herat, Afghanistan; 2-NIMA.
3. Series U911; Jalalabad, Afghanistan; 2-NIMA.
4. Series U911; Kabul, Afghanistan; 2-NIMA.

5. Series U911; Kabul2, Afghanistan; 2-NIMA.
6. Series U911; Mazari Sharif, Afghanistan; 2-NIMA.
7. Series U911; Qandahar, Afghanistan; 2-NIMA.
8. Series U911; Qonduz, Afghanistan; 2-NIMA.

(B) Image City Maps (ICM) orthophotographs

- | | |
|---------------------|--------------|
| 1. Herat | 13. Charikar |
| 2. Jalalabad | 14. Farah |
| 3. Kabul 3 | 15. Gardiz |
| 4. Kabul 5 | 16. Herat |
| 5. Kabul 6 | 17. Kabul 1 |
| 6. Kandahar 1 | 18. Kabul 2 |
| 7. Kandahar 2 | 19. Kabul 3 |
| 8. Lashkargah | 20. Kabul 4 |
| 9. Mazari Sharif 1 | 21. Kabul 5 |
| 10. Mazari Sharif 2 | 22. Kabul 6 |
| 11. Asadabad | 23. Khowst |
| 12. Bamian | 24. Konduz |

Table 7 - Geosystem Tutorial for adding a new map into the collection, or viewing existing map metadata.

Adding New Map

1. Sign in.
2. Go to “Administration”
3. Add “New metadata”
4. Choose the appropriate metadata template (template for map).
5. Metadata standards types and use (import maps as PDF, JPG, or JPEG).
6. Enter data (Template for map).
7. Specify map coordinates (WGS 84; North & South latitude bounds; East & West longitude bounds).
8. Add “thumbnail” as an uploaded picture or link on the web.

Viewing Existing Metadata

1. Sign in.
2. Go to “Administration”
3. Click on “My metadata”

APPENDIX C:

Index maps of LIMDIS maps

Figure 1	2
Figure 2	3
Figure 3	4
Figure 4	5
Figure 5	6
Figure 6	7

Figure 1

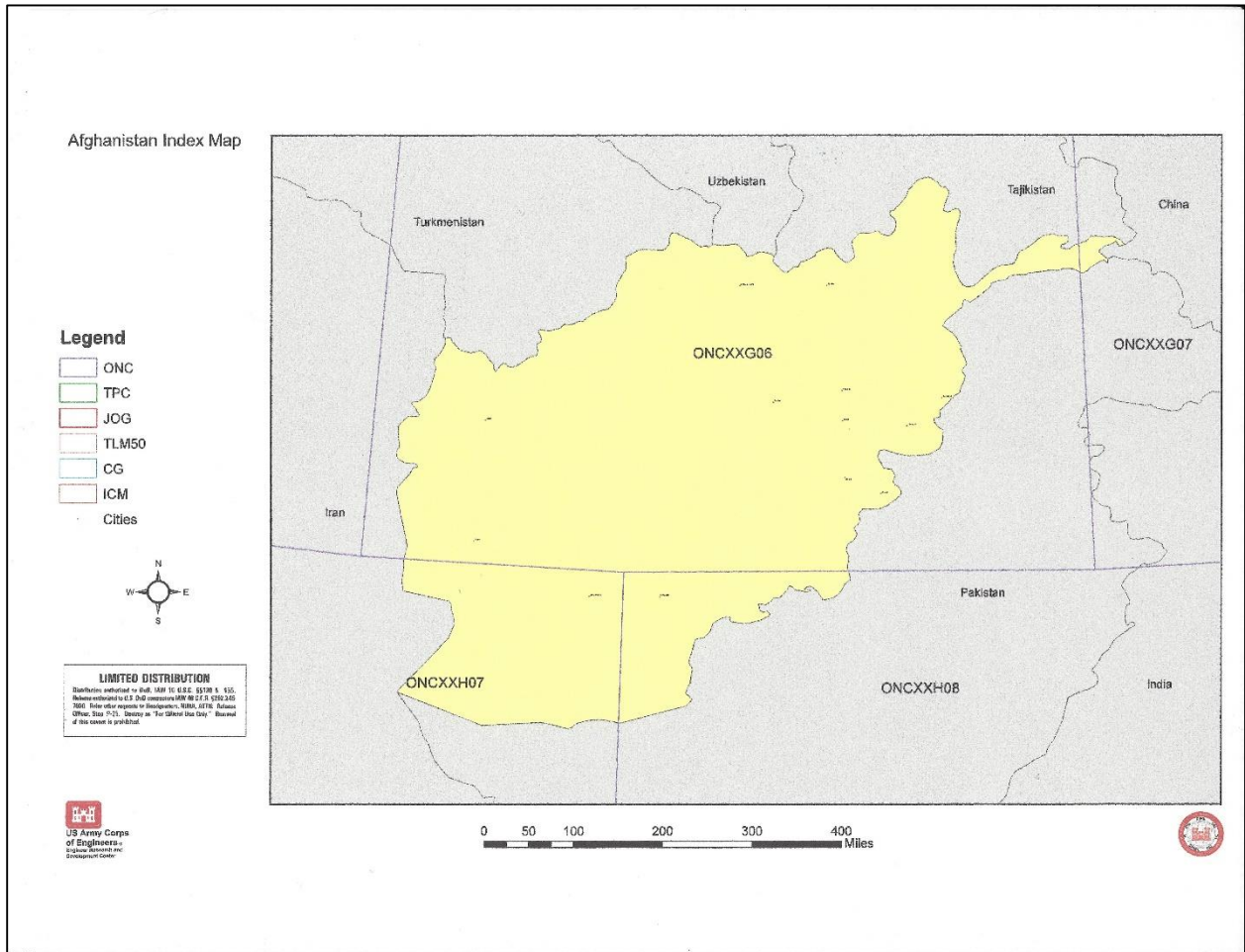


Figure 1. Interactive map (in the original) of Operational Navigation Chart (ONC) maps (scale 1:1,000,000) of the Afghanistan region that are stored electronically. All of these original maps can be expanded on the screen to enlarge the scale.

Figure 2

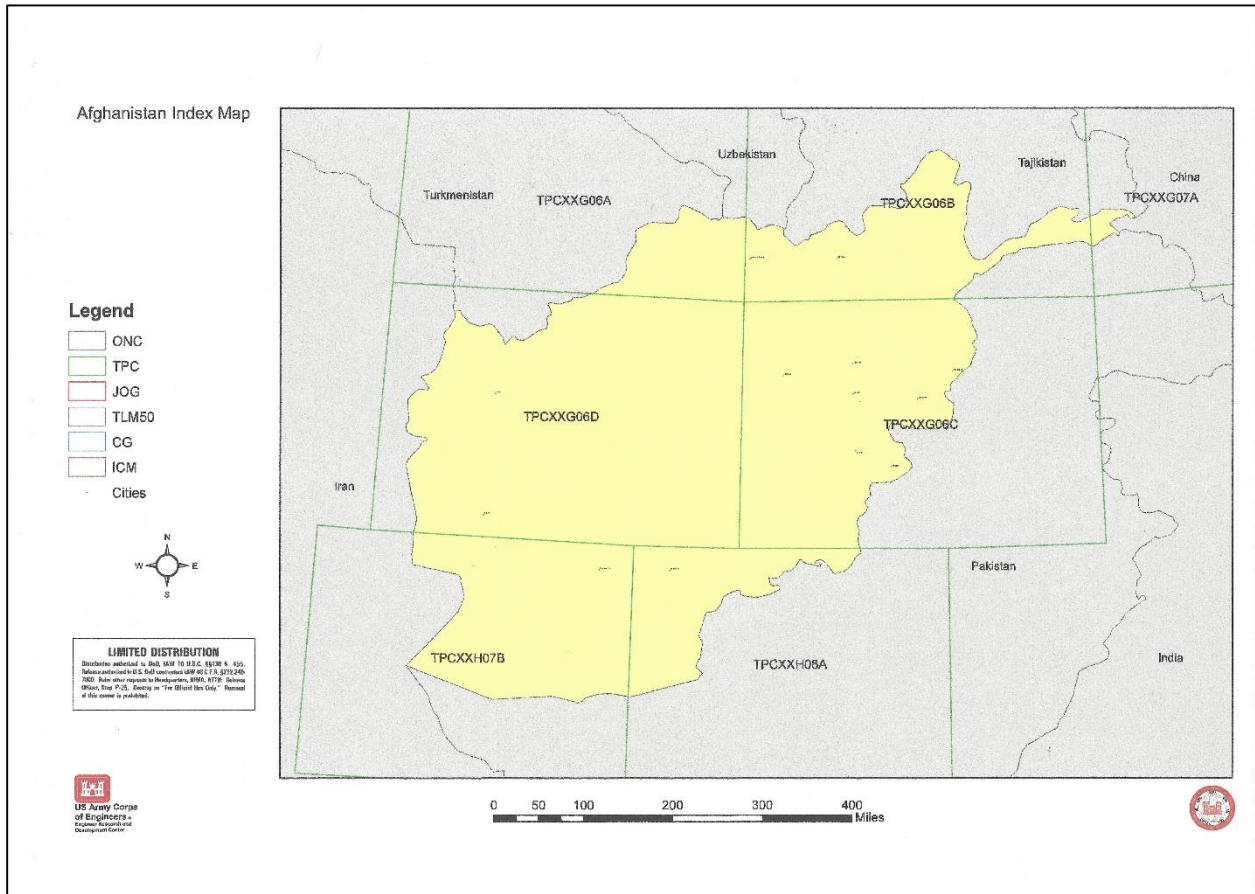


Figure 2. Interactive map (in the original) of Tactical Pilotage Chart (TPC) maps (1:500,000) of the Afghanistan region that are stored electronically. All of these original maps can be expanded on the screen to enlarge the scale.

Figure 3

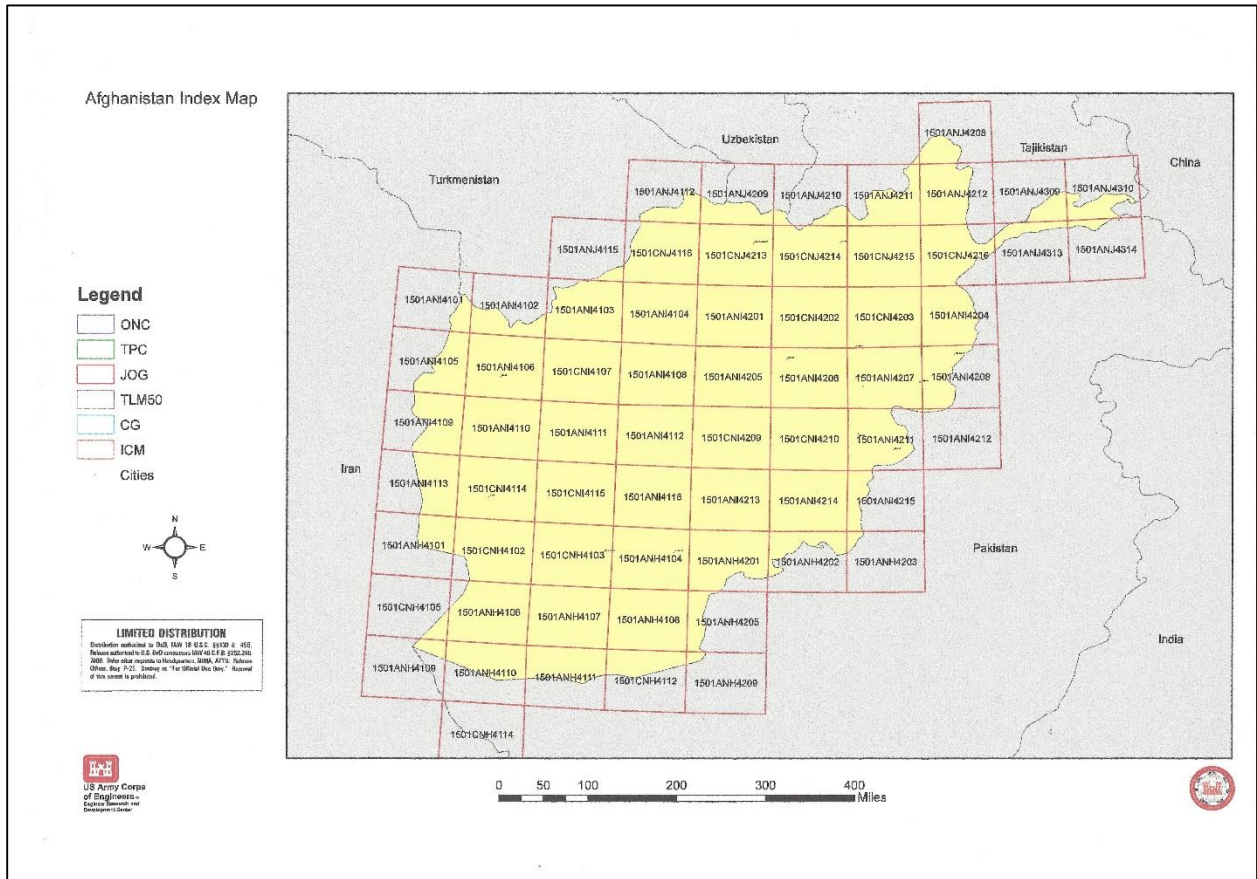


Figure 3. Interactive map (in the original) of Joint Operations Graphic (JOG) maps (1:250,000) of the Afghanistan region that are stored electronically. All of these original maps can be expanded on the screen to enlarge the scale.

Figure 5

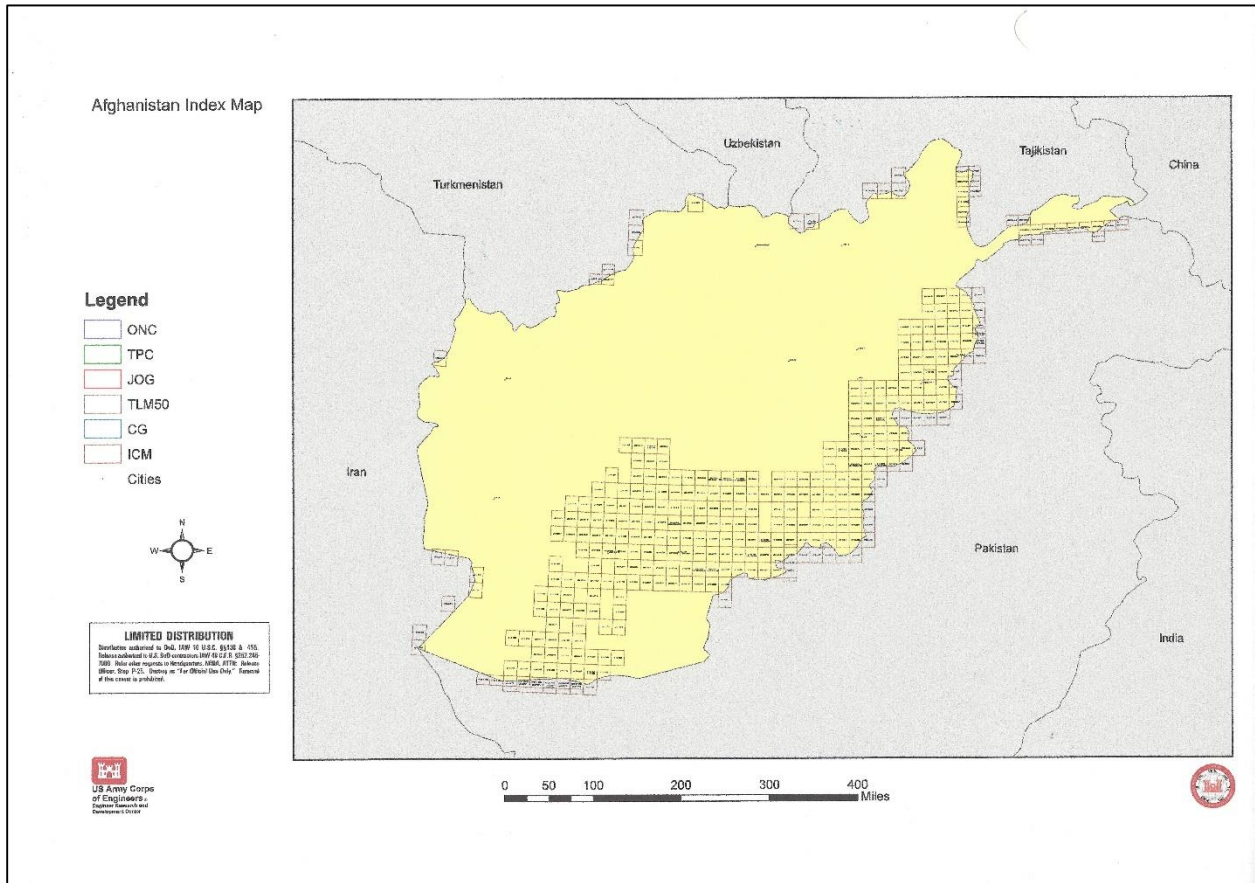


Figure 5. Interactive map (in the original) of Topographic Line Maps (TLM50) (1:50,000) of the Afghanistan region that are stored electronically. All of these original maps can be expanded on the screen to enlarge the scale.

Figure 6

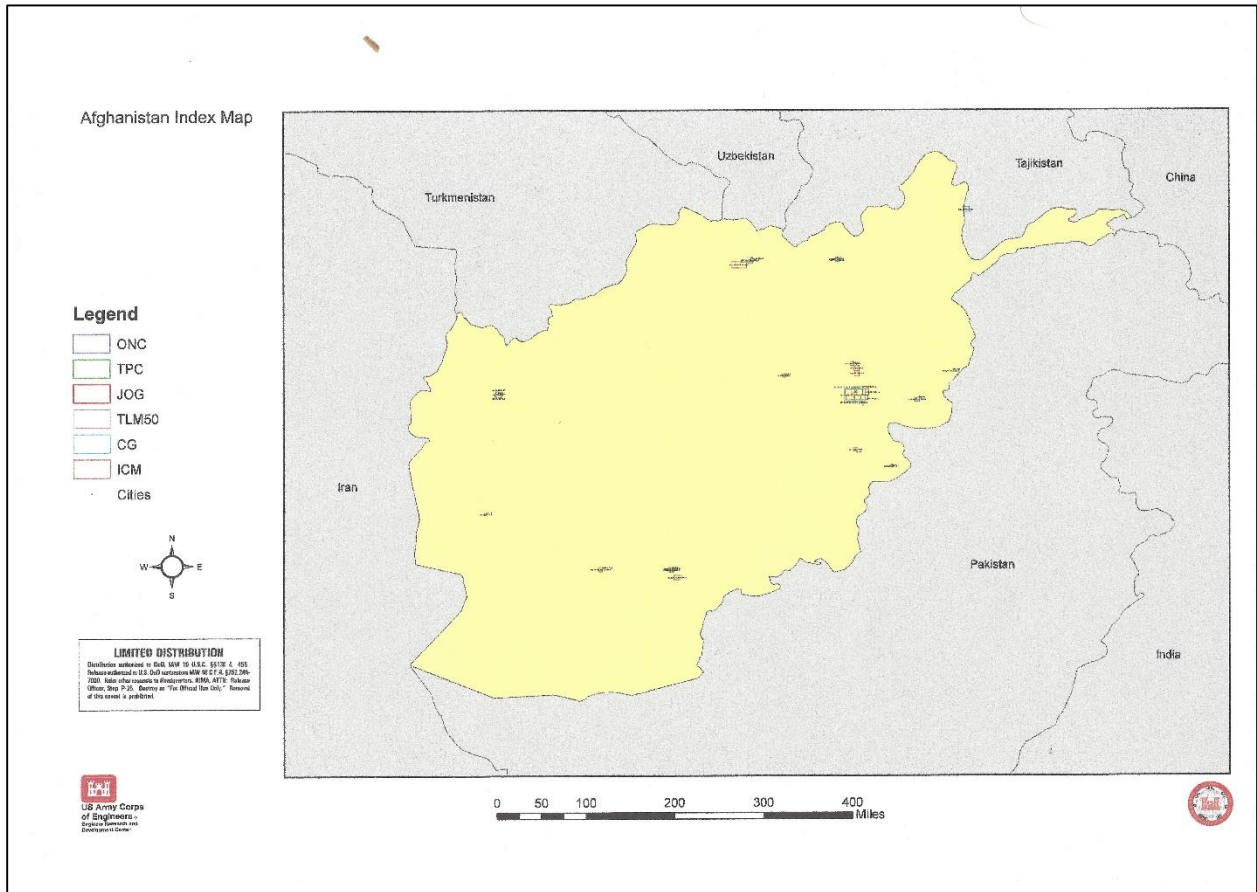


Figure 6. Interactive map (in the original) of City Graphics (CG) and Image City Maps (ICM) at various large scales of the Afghanistan region that are stored electronically. All of these original maps can be expanded on the screen to enlarge the scale.

Appendix D:

Evaluations of the Afghanistan map and document collection by Drs. Allan and Eighmy

Evaluation – Dr. Eighmy 2

Evaluation – Dr. Allan 6

From: Thomas H. Eighmy, Ph.D.
To: John Shroder Jr. ,Ph.D.
Center for Afghanistan Studies
University of Nebraska at Omaha

July 9, 2014

Review of NEH Grant to UNO Center for Afghanistan Studies # OMB No. 3136-0134
\$40,000.00

~~~~~  
**Summary:**

I regard the existing grant as an exploratory foundation exercise in which:

---much was learned;

---much was accomplished; and

---much remains to be done in support of wider access to this scarce and priceless trove of maps and documents spanning Afghanistan's past, present and uncertain future. The importance of Afghanistan on the world scene will not diminish with the pullout of US and ISAF forces.

Quite the contrary.

**1] The extent of the University of Nebraska Omaha Arthur Paul Afghanistan Collection:**

The existence of this collection is known to me and to all students of Afghanistan's distant and recent past. It includes rare published documents, field notes and maps. For one example, the library was widely used and referenced in Ambassador Peter Tomsen's massive, and soon to be classic, work *The Wars of Afghanistan: Messianic Terrorism, Tribal conflicts, and the Failures of Great Powers* (2011, Perseus Books/Public Affairs ISBN 978 – 1-58648-763-8).

While there are several specialized libraries in the US and elsewhere, I feel none can match the scope and comprehensiveness of this collection. I was truly impressed by the breadth and organization of the materials.

**2] The Geography Department and Center for Afghanistan Studies (CAS) and Shroder Collections:**

Many additional documents beyond the Paul Collection reside in CAS's and in Shroder's private collection spanning his *40 professional years* of physical geography field work in Afghanistan and neighboring Pakistan, and in Gouttierre's educational experience with Afghans in-country and in the US. There are currently *six RAIDS* (redundant array of independent disks) of data, *principally maps in Shroder's collection. The experience of Jeffrey Olsenholler is instructive. He was making progress, but drawn away by a higher salary. His work needs to be expanded and amplified in ways described elsewhere in this new proposal.*

**3] Limited Use Holdings:**

The Geography, CAS and Shroder materials are largely unclassified but in some cases use is limited to UNO contractors for the US Government and are password protected and housed separately. They are largely Department of Defense (DOD) satellite maps with inadequate toponomy drawn from pre-existing map series.

We were able to enlarge a DOD colored 1:100,000 electronic topographic map to 1:25,000 or much larger and clearly discern a Bailey Bridge erected in 1991 by the Office of USAID

Representative/Afghanistan (O/AID Rep) and Pakistan Engineers at Arundu on the Konar River showing an improved surface on the bridge connecting dirt trails on opposite banks. I (Eighmy) chose this example because of my engagement with O/Aid Rep and familiarity with the bridge.

*In the future use restrictions should be removed and the affected materials need to be merged with the Paul collection for wider availability.*

#### **4] The Current Printout of Holdings and its Extention and Elaboration:**

A current printout of holdings made available to us totaled 2313 items and growing. This accumulation is a tribute both to what has been done and what needs to be done. Approximately half are digitized and categorized by the Federal Geospatial Data (FGDC) system. *This is roughly the cartographic equivalent of a Dewey Decimal system for books.? A copy is attached as an Appendix to this proposal.*

All maps need to be brought to FGDC standard *and, where possible GEOTAGGED along with Reverse-side field notes where these are present.*

*Photos, some of considerable detail need to be merged into collections sorted by age and place and catalogued according to current library practice.*

#### **5] History and Posterity Lost and “Strength in What Remains”:**

Parts of the Kabul Museum were looted in the Taliban and immediate post Taliban period. Brave local staff preserved more. Now, the new National Archives building reportedly stands empty. Earlier, *at the time of the Soviet invasion*, part of Shroder’s collection was delivered by his cook at great personal risk to the US Embassy. Earlier yet in 1971-75 the Afghan Demographic Studies (ADS) materials which yielded the first and only scientific survey of Afghanistan’ population were neatly stored in Kabul. Materials for a national sampling frame included maps of the whole country at scales of 1:50000, 1:100000, 1: 250000, 1:1500000, Airphotos and Sketch Maps of 440 Sample Villages and all urbn places, “Age Computers” for illiterate populations, and thousands of original demographic and fertility survey schedules of Urban, Rural and Nomad populations . These were all destroyed in the Taliban era. Thanks to the UNO collections, such materials as remain in individual participant’s possession (Shroder Eighmy and others) will be donated, catalogued and digitized for posterity.

#### **6] External Content Linkages:**

##### **Afghanistan Center at Kabul University (ACKU) and International Center for Integrated Mountain Development (ICIMOD)**

Under the new grant, the commitment is to house and share not just library catalogs but digitized materials, which would otherwise be available only in Omaha. The best repository in Afghanistan is ACKU. It occupies a state-of-the-art new building at Kabul University and has links worldwide ([www.dupreefoundation.org/](http://www.dupreefoundation.org/)) largely funded by volunteer contributions from the US and elsewhere. With the University of Arizona Library assistance ACKU is also digitizing its own collection of several thousand documents, mostly in indigenous languages. ACKU is the ideal living repository for UNO Afghanistan materials. It has enthusiastically welcomed partnership with UNO in the undertaking. *E-mail exchange with Eighmy & ACKU attached as an Appendix.*

ICIMOD is a well established and modern repository in Katmandu, Nepal, on the Asian continent and readily accessible to Asian scholars. If the security situation deteriorates in Afghanistan, it is also important to have a back-up location for UNO materials.

### **7] The Topographic Series Maps:**

Many of the series are known to me from work in the country. They are presently scattered among the UNO Paul Library, the Geography Department, and Shroder's collection where *there are some 15 multiple drawer map cabinets* containing paper maps, many in fragile condition, and dating from *19<sup>th</sup> century*. The topographic series covering the whole country derive from US-sourced Fairchild Aerial Services in the southern two thirds of the country and from SovExpoPhotos in the northern third, both dated c. 1958-1961. Following this, Afghan national teams of the Afghanistan Cartographic Institute (ACI) carried photomaps to all parts of the country identifying and naming settlements. The resulting ACI colored maps at :100,000 was the result along with 1:50,000 (largely B/W) and colored 1:250,000 series.

US, Soviet, and later in post-2001 UK, and Netherlands series followed at usually the same scales. The most valuable have joint Roman and Persian spellings and others are in solely Roman or Cyrillic script. Some of the Soviet topo series have historically interesting backside field notes.

This early work was the source of the 1975 ADS and Ministry of Planning "Provisional Gazetteer of Afghanistan" by district (*woleswali* etc.) with a set of laboriously derived hand scribed provisional district boundaries. (One single colored sheet coverage with these Boundaries is in my [Eighmy's} possession and needs to join the collection)

The point is that subsequent map series lack the toponomic (place name) detail of the original series and are derivative or additive to it. As far as I know, only the UNO complex has made serious progress in adequately describing and codifying these materials and placing them in an open-source repository..

### **8] The Value of the Collection:**

The Afghanistan and related Pakistan map collection is "*invaluable*" (which is far from saying "nonvaluable" or "worthless") since most of the topical and series maps cannot be replaced at any price. The Afghan Cartographic Institute series were a limited run and I believe are out of print. This applies as well to the UK, Netherlands and USSR series. Each are historic in some sense. They contain *toponymy* in three different *languages and scripts* with additional *notes* on their backsides. The toponomy and notes are *original* and based on intensive *field work*.

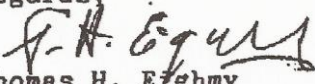
The US based *satellite* series might be replaced, but the limited toponomy they contain is *derivative* from the above pre-existing series. Overall my rough estimate of monetary value of the collection is \$90,000.

### **9] The Future:**

Should the next step of this foundation exercise be accepted by NEH as worthy of funding in the implementation phase, then I would be pleased and committed to monitor and evaluate the



GeoNetwork site and Web portal and provide regular assessments of progress that UNO makes in the final activities to make this fine map and document collection on Afghanistan more readily electronically available to researchers.

Regards,  
  
Thomas H. Eighmy

Thomas H. Eighmy, Ph.D.  
***Appletree Consulting--Foreign Affairs & Assistance***  
1820 Apple Tree Lane East  
Bethlehem PA 18015-5205  
U.S.A.

[tbeighmy@rcn.com](mailto:tbeighmy@rcn.com) Tel. 610 814-3321 Fax. 610 814-0754

~~~~~



PROGRAM IN SOCIAL SCIENCES

ONE SHIELDS AVENUE
DAVIS, CALIFORNIA 95616-8673

9 July 2014

Dear Sir/Madam:

RE: Evaluation of NEH Project: **Metadata Construction and Digitizing Maps of Afghanistan**, PHASE ONE of Prof Shroder's map collection for cataloguing and digitizing. Suggestions for PHASE TWO are included.

The PHASE ONE evaluation of progress took place on the 15th and 16th May at the Center for Afghanistan Studies, University of Nebraska, Omaha.

Prof. Shroder provided full access to all the map cabinets and additional materials was provided. Shaista Wahab, the knowledgeable librarian in charge of the Arthur Paul Collection of Afghanistan materials guided us to the location of holdings. Prior to arrival in Omaha a file of most of the digitized maps thus far, 2313 in one terabyte of storage, was emailed to me for my inspection. In addition to examining loose maps I saw the open source 15 disks of RAID (Random access informal diverse), maps amounting to 5.3 terabytes. These are destined to be digitized in PHASE TWO of the project.

Dr. Eighmy, also an evaluator, is devoting his energies towards technical aspects of Dr. Shroder's collection, such as the status of remaining old survey population records, future possible locations for access to the digitized collections, and collating remaining Afghan Cartographic Institute maps at various scales.

My evaluation will focus on topics contained in the original project proposal on **Metadata Construction and Digitizing Maps of Afghanistan**: Metadata, Agricultural Potential Maps, Demography, Ethnic, Linguistic and Tribal Groups, Education, and Outside Map Recovery. Dr. Shroder has earmarked and cited specific historical maps that are contained on these topics. As a social scientist in this evaluation my role has been to conduct online and email correspondence research into the outlined topics since 16-17 May with the intent of scouring for Outside Map Recovery—other potential project documents—and project evaluations specifically by the US auditor John Sopko of SIGAR, and USAID reports, as well as literature on cognate topics. The drawbacks of these topics are critically discussed in detail with special attention paid to the lack of geospatial data in project final reports.

Metadata: The proposed metadata was processed by two employees hired by Prof. Shroder, an experienced professional trained in “Big Data” analysis and his graduate student assistant. Unfortunately for the project the former left the project for a “Top 25” world ranked university job at a higher salary. The graduate assistant continued at his painstaking job of sifting through the maps and ordering them. What has been accomplished this far is the creation of the GeoNetwork system, which contains provisions for access and transparency as well as password protection for limited distribution maps. This framework will anchor all the maps in both phases, the first just completed and the projected second phase.

Agricultural Potential Maps: These maps had been collected by Prof. Shroder over a period of five decades and were variable in quality and scale. Two features on the maps were dominant, soil maps and water availability. Agriculture in Afghanistan has been studied extensively by several national projects in the past, a long term French vegetation mapping project executed by Pierre Lalande of the University of Toulouse and several German projects by AGA (Arbeit Gesellschaft Afghanistan) a colloquium of German scholars. Several maps of these types were found.

The dominant soil and water mapping project in Afghanistan has been beset by technical problems since its beginning in the late 1940s, the US financed Helmand Valley Authority, later Helmand and Arghandab Authority. The entire rocky history of this very large project has been authored by Nick Cullather, an economist at Indiana University and published in 2003. Because of the immediacy and short time scales of projects executed by development groups in the Helmand region in the years since 2001 their veracity has been questioned many times in numerous online reports by John Sopko of SIGAR, the US Inspector General’s special representative for Afghanistan. Nevertheless the soil and irrigation potential maps possessed by Prof. Shroder are valuable tools for future consideration. There is a fundamental problem in dealing with all land in Afghanistan, which is the lack of proof of land tenure. Documentation is simply unavailable for 85% of cultivable land because of political problems. Liz Wiley, a world renowned English expert on land tenure systems, has twice tackled the job of unraveling the secrets of Afghanistan land tenure but is foiled by the failure of any Afghanistan government official to reveal who owns valuable land. Ethnic and tribal “notables” control most land. Any exposure of landowning patterns would be cause for violent disputes among notables seeking redress for prior fictive or actual claims. The

overpopulation of Afghanistan is known from the estimated population of 6.5 million in the first head count census of Afghanistan in 1966-68 in the UN Special Fund (later UN Development Programme) UNFAO executed census to an estimated 32 million today. At present the food calories consumed in Afghanistan amount to imports of over 80% of the total, much of this food is donated by the US. Maps of cultivated land and irrigation water potential where irrigation is possible and have been completed are in Prof. Shroder's collection. These are very rare. One successful mapping of an irrigation project just north of Kabul is the Kuh Daman valley, which was part of the UNDP Upper Kabul River Project. After many years from its inception in the 1960s it was completed in late 1970s. A major impediment was getting easements to revise ancient traditional irrigation practices of water allocation. The most notable obstruction in nearby Kuh Daman was modifying the water supply from the Mahigir canal, constructed by Emperor Timur in 1398!

Demography: Two major changes have occurred in recent years in demography in Afghanistan; the first is the creation of metadata worldwide group data bases in which information from all nations and territories is included, the second is the collection of standardized data sets with concurrent supporting macro level documentation unique to each nation, and of great interest, internal mesolevel regional map depiction in countries. No maps containing these data were found in Prof. Shroder's collection, understandably so, because this is a relatively recent phenomenon on the world stage. These global "Big Data," sites that publish data and maps on Afghanistan include the following: CIA World Fact Book, Global Index of Biocultural Diversity, UNDP's Human Development Index, and Education Index, Vision for Humanity's Global Peace Index, Pew Research Center, and the Economist Intelligence Unit's (EIU) Index of Democracy. Not all global indices include Afghanistan, however, notable exceptions in the list of 201 nations and territories of the world are Chad in Saharan Africa and Afghanistan, for which no national measures of cognitive ability have been achieved. The current Afghanistan measure by Lynn and Vanhanen (2012) is a proxy measure obtained by averaging measures from contiguous nations.

In addition to globally available national group data Afghanistan needs to include maps from data sets that are products from academic research on demographic topics. One topic that needs mention is the prevalence of consanguinity, which is widespread in Afghanistan--and Pakistan. For contiguous Pakistan the rate is 51% while preliminary

results for Afghanistan show some provinces in that same range. Consanguinity--cousin marriage—is linked with many factors that inhibit a fully functioning democratic nation. One major impediment is inbreeding depression. Others include the overall negative likelihood of the development of democracy, no recognition of individual rights, rigid collectivism negating individualism, and lack of cooperation between ethnic and tribal groups thereby inhibiting the formation of democracy. In Afghanistan the endogamous elite “khan” kinship networks produced by cousin marriage encourage predation of scarce resources such as cultivable land, irrigation water, timber, and grazing land. It is admitted that consanguinity is unlikely to be changed in the entire Afghanistan context but it is being countered by the new nuptial habits of modern young women in urban settings. (In Christianity, first and second cousin marriage was banned by St. Symachus, the 51st pope, in 514 CE. It is prevalent in most Muslim countries. The practice is prohibited in 25 US states and among couples under 55 in six more states.) New field surveys by Saify and Saadat (2012) and Saadat and Tajbakhsh (2013) pioneer documentation of consanguineous marriages in seventeen Afghanistan provinces.

Collection of these large published data sets and their depiction on digitized maps shall be a primary objective of PHASE TWO. Badly needed maps showing the geospatial differential achievements of provinces and districts in Afghanistan are necessary for planning and distribution development aid.

Ethnic, Linguistic and Tribal Groups: At last count Afghanistan has 55 documented ethnic groups speaking 45 documented languages, with hundreds of Pashtun tribes included under one ethnic group, Pashtuns. Other than one research volume, no American source has dealt with this very large number. During the creation of the German *Tubingen Atlas Vorderen Orient* (Southwest Asian Atlas) the editor for Afghanistan, Erwin Orywal, created a single map of Afghan ethnic locations for the Atlas and cited all the documented publications on 55 ethnic groups in a large accompanying German language volume *Die Ethnische Gruppen d’Afghanistan* (1986). This definitive volume is virtually absent in American libraries. An American interlibrary loan member can get this volume from the Staats Bibliothec Bayern in Munich, Germany. The large number of distinct languages (not dialects) spoken in Afghanistan with their numbers of speakers and their locations can be obtained online from the massive files of the *Ethnologue* web site. Several web sites have maps of

individual tribal groups including the US Defense Language Institute in Monterey, California, which has a web site devoted exclusively to mapping individual Pashtun tribes. These maps need to be linked or copied to the UNO GeoNetwork site. Ethnic, Linguistic and Tribal groups are very important today because all politics in Afghanistan is based on allegiance to ethnic/tribal group affiliation as seen in this week's announcement of presidential election outcomes. There is a considerable interest in Ethnolinguistic Fractionalization (ELF) in a variety of academic sources, a recent example is a Harvard paper "Fractionalization" written by Alesina et al. It is linked to the concept of economic well being of nations with high levels of fractionalization that impede progress. The sheer number of ethnic groups, tribes, and languages in Afghanistan does not bode well for such a fractured population. Maps need to be constructed at an appropriate scale to assist in assuaging polyethnic conflict.

Education: In 2006 the US government appropriated \$24 million for schools in Afghanistan. This Partnership for Advancing Community Education (PACE-A) is just a fraction of the millions spent on education in post 9/11 Afghanistan. This project is emblematic of the problems of aid to Non-Government Organizations and contractors in Afghanistan. One notorious well covered example by media was the project by Greg Mortensen's Central Asian Institute which ended up in the American courts and out of court settlements involving CAI and donors to the project. Not only was bookkeeping a major problem but the project could not inform prospective donors of the locations of their schools because they did not even have a map of the sites. In education we now know that cognitive ability, intelligence, accounts for two thirds of learning achievement (Haworth, Asbury, Dale, and Plomin 2011). Intelligence is fixed in humans around the age of 11 and is sustained roughly at that level until age 77. Every teacher knows that there is a substantial difference in children's rate of learning at the same age. A standard intelligence test at age 11 is Raven's Progressive Matrices, a culture free test that only requires a skill at using a pencil on this non-verbal test. This test and other Wechsler-like tests are standards throughout the world. It has been used with effect in a Spanish NGO project in neighboring Baltistan in northern Pakistan. Yet it is impossible to find any semblance of fundamental cognitive ability geospatial order in projects connected with PACE-A that would contribute to a group value at the national, provincial, or district level. There are no data or cartographic records available online that show geospatial consistency consequentially a rural and urban opportunity to assess the cognitive capability of Afghanistan's young population--over 50% are under

15 years of age--has been lost. Prof. Shroder's goal of assembling a map collection for the Arthur Paul Collection with reliable material has been thwarted by project Americans with little or no knowledge of Afghanistan who have squandered a golden opportunity to provide an assessment of the future Afghan's population.

Parenthetically, it should be added that these scams still exist. The recent online report by Justin Sandefur of the Boston based Center for Global Development under the support of UNICEF is nothing less than a denunciation of auditor John Sopko of SIGAR, a US Congress body created for investigations of fraud by US contractors in Afghan aid. A critique by Harvard's Kenneth Hill on the methodology and conclusions of this study is available on line.

Outside Map Recovery: Cited throughout this report are references to literature and sites where other maps and geospatial data are available—or in too many instances—should be available, given the enormous aid expenditures on the above topics. Recovery of valuable geospatial data in Afghanistan needs to be started immediately because of the withdrawal of military and civilian personnel involved in many projects. Prof. Shroder needs to have staff in Kabul to coordinate collection, digitization, and storage of geospatial of existing materials otherwise they will be lost. The capture of an inventory of USAID project reports on Afghanistan aid would be a start to this initiative.

The aimlessness of Americans in Afghanistan since 1973 after the overthrow of King Zahir by Prince Daoud—a good example of traditional Pashtun cousin enmity!-- has resulted in many deaths of Afghans and foreigners. It has created wreckage of much of the country. However, little has been learned from the strife of two civil wars in the 1980s and 90s and the antimodernist Taliban period. Much of that ignorance has come from the absence of sound textual and geospatial information about the geography and history of Afghanistan. Good maps are essential for storing knowledge; Prof. Shroder's collection is a big step in the right direction. It needs to be disseminated widely to one and all.

I look forward to acting as an evaluator/monitor for periodic assessments of the PHASE TWO GeoNetwork site and the MAP web portal. Incorporation of products of the Outside Map Recovery segment will enhance the viability of the map collection. Of the current extensive Shroder UNO map collection I would estimate its market value in the range of \$85,000-\$100,000 with a contemporary tendency to the higher number based on

I look forward to acting as an evaluator/monitor for periodic assessments of the PHASE TWO GeoNetwork site and the MAP web portal. Incorporation of products of the Outside Map Recovery segment will enhance the viability of the map collection. Of the current extensive Shroder UNO map collection I would estimate its market value in the range of \$85,000-\$100,000 with a contemporary tendency to the higher number based on an examination of Eurasian book and map dealer's offerings. Wealthy Afghan émigrés in the Gulf States seem to be bidding up the prices of a variety of books, photographs, and maps of Afghanistan.

Cordially,

A handwritten signature in cursive script that reads "Nigel J. R. Allan".

Nigel J. R. Allan PhD

Emeritus Professor of Geography
University of California, Davis

Adjunct Professor of Geography
University of Nevada, Reno

Appendix E:

Letters of commitment to preserve the map collection electronically at Kabul University and ICIMOD in Kathmandu, Nepal

Letter of Commitment – Kabul University	2
Letter of Commitment - ICIMOD.....	3

Afghanistan Center at Kabul University,
ACKU Building inside Kabul University
Kabul- Afghanistan

July 12, 2014

Dr. John Shroder
Senior Research Scholar
Center for Afghanistan Studies
Emeritus Professor of Geography and Geology
University of Nebraska at Omaha
Omaha, NE 68182

Dear Dr. John Shroder,

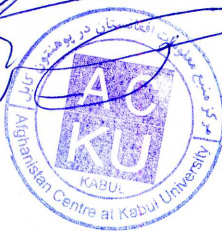
ACKU's mission is to support the process of nation-building in Afghanistan, by providing a platform for sharing information, facilitating research and exchange of ideas, and encouraging a habit of reading among Afghans. ACKU was established in 1989 in Peshawar, Pakistan as a central depository for information on Afghanistan. Currently ACKU collections have been enriched with more than 90,000 documents in both local and foreign languages.

ACKU is delighted to receive a copy of your extensive map and documents collections. Indeed this digitized material collection will greatly enrich ACKU's archive. This will facilitate to a greater extent students and researchers who utilize ACKU's collections.

ACKU looks forward to collaborating with you. Thank you very much for your kind cooperation.

With Best regards,

Abdul Waheed Wafa
Executive Director



E-mail: info@ackuaf.org
Web: www.acku.edu.af
Tel: +93 (0) 700281415

Afghanistan Center at Kabul University
ACKU Building inside Kabul University
Kabul, Afghanistan

Central P.O. Box: 33
Kabul Afghanistan

7 July 2014

Prof. John Shroder
Senior Research Scholar
Center for Afghanistan Studies
Emeritus Professor of Geography and Geology
University of Nebraska at Omaha
Omaha, NE 68182, USA

Dear Prof. Shroder,

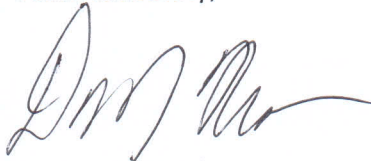
As a regional learning and knowledge centre, ICIMOD is playing a facilitative role in promoting data generation and sharing it in the HKH region. ICIMOD's Regional Database Initiative has been working with the main focus to ensure an integrated management of data and information incorporating geospatial, socioeconomic, and multi-thematic data at different levels and scales.

ICIMOD believes that access to timely and high quality data and information would inform, promote, and accelerate learning on the challenges facing mountain ecosystems and their people, and enable independent research and scientific enquiry. Afghanistan being one of its regional member countries, ICIMOD is interested to participate in your efforts under NEH Foundation and would be pleased to have electronic copies of your extensive topographic and topical maps of Afghanistan. This will help strengthen our database resources as well as greatly benefit the researchers in the region.

I look forward to a fruitful collaboration.

With best regards,

Yours Sincerely,



David Molden
Director General