

RESEARCH ARTICLE

High PROX1 expression in gastric cancer predicts better survival

Alli Laitinen^{1,2*}, Camilla Böckelman^{1,2}, Jaana Hagström^{2,3}, Arto Kokkola¹, Pauliina Kallio², Caj Haglund^{1,2}

1 Department of Surgery, University of Helsinki and Helsinki University Hospital, Helsinki, Finland,

2 Research Programs Unit, Translational Cancer Biology, University of Helsinki, Helsinki, Finland,

3 Department of Pathology and Oral Pathology, University of Helsinki and Helsinki University Hospital, Helsinki, Finland

* alli.laitinen@helsinki.fi



Abstract

Background

PROX1 is a transcription factor involved in the development of various organs. It has also an important function in colorectal cancer progression. The aim of this study was to investigate the prognostic role of PROX1 expression in gastric cancer.

Methods

We evaluated PROX1 expression in gastric cancer by immunohistochemistry of tumor-tissue microarrays including tumor specimens from 283 patients who underwent surgery at Helsinki University Hospital. We investigated the association of PROX1 expression with clinicopathologic variables and patient survival.

Results

Cytoplasmic PROX1 reactivity was high in 56 (20.5%) and low in 217 (79.5%) cases. Low PROX1 immunostaining associated with diffuse cancer type ($p = 0.002$). In subgroup analysis, PROX1 was a significant marker of better prognosis in patients aged under 66 ($p = 0.007$), in those with intestinal cancer ($p = 0.025$), among men ($p = 0.019$), and in tumors of less than 5 cm diameter ($p = 0.030$). Patients with high PROX1 expression had a cancer-specific 5-year survival of 65.6% (95% CI 52.7–78.5), compared to 37.1% (95% CI 30.2–44.0) for those with low expression ($p = 0.004$, log-rank test). This result remained significant in multivariable analysis (HR = 0.56; 95% CI 0.35–0.90; $p = 0.017$).

Conclusion

In gastric cancer, high cytoplasmic PROX1 expression is an independent marker of better prognosis.

OPEN ACCESS

Citation: Laitinen A, Böckelman C, Hagström J, Kokkola A, Kallio P, Haglund C (2017) High PROX1 expression in gastric cancer predicts better survival. PLoS ONE 12(8): e0183868. <https://doi.org/10.1371/journal.pone.0183868>

Editor: Aamir Ahmad, University of South Alabama Mitchell Cancer Institute, UNITED STATES

Received: March 23, 2017

Accepted: August 11, 2017

Published: August 30, 2017

Copyright: © 2017 Laitinen et al. This is an open access article distributed under the terms of the [Creative Commons Attribution License](https://creativecommons.org/licenses/by/4.0/), which permits unrestricted use, distribution, and reproduction in any medium, provided the original author and source are credited.

Data Availability Statement: All relevant data are within the paper.

Funding: This study was supported by grants from the Finnish Cancer Foundation, the Kurt och Doris Palander Foundation, the Sigrid Juselius Foundation, the Martti I. Turunen Foundation, and Medicinska understödsföreningen Liv och Hälsa. The funders had no role in study design, data collection and analysis, decision to publish, or preparation of the manuscript.

Competing interests: The authors have declared that no competing interests exist.

Introduction

Gastric cancer is a highly malignant tumor and is globally one of the major causes of cancer-related death [1]. Its incidence in the last decades has decreased, but its 5-year survival rate, despite curative surgery is, in the Western world, still less than 30% [2]. Besides the established prognostic factors such as TNM-stage together with the possibility of curative surgery, additional prognostic information may come from tumor markers.

The transcription factor PROX1 is a key regulatory protein in the development of various organs. It is involved in cell-fate determination and progenitor-cell regulation in the central nervous system, eye, liver, pancreas, lymphatic system, and the heart. It also plays a role in cancer development. Previous studies have indicated that PROX1 can have either tumor-suppressive or oncogenic properties. Various levels of PROX1 protein occur in tumor cells, but the role of PROX1 in the proliferation, migration, and invasion of cancer cells is unclear [3].

PROX1 is involved in various gastrointestinal tract tumors [4–10], in hematological malignancies [11], in breast cancer [12], in Kaposi sarcoma [13], and in brain tumors [14,15]. In colorectal cancer, PROX1 plays an essential role in tumor progression; high immunohistochemical nuclear PROX1 expression is associated with poor patient outcome [4,5]. Conversely, in hepatocellular carcinomas [6], in pancreatic ductal adenocarcinomas [8,9], and in carcinomas of the biliary system [10], low PROX1 expression is associated with poor prognosis. In esophageal squamous cell carcinoma cells, over-expression of PROX1 inhibits tumor cell proliferation [7].

In gastric cancer, PROX1 may promote tumor progression by inducing cancer-cell proliferation and lymphangiogenesis [16]. PROX1 expression when, appearing in gastric cancer tissue, may serve as a potential prognostic factor and treatment target. Moreover, tumorigenesis and tumor progression is also linked to dysregulation of microRNAs. Recently Zhang et al. [17] found that miR-489 was significantly downregulated in human gastric cancer tissues and cell lines, and PROX1 was a direct miR-489 target.

The aim of this study was to determine the prognostic value of immunohistochemical staining of PROX1 in gastric cancer.

Materials and methods

Patients

In total, 313 patients underwent surgery for histologically verified gastric adenocarcinoma at the Department of Surgery, Helsinki University Hospital between 2000 and 2009. We included 283 tissue samples from patients undergoing total or partial gastrectomy with D1- or D2-lymphadenectomy, 228 (72.8%) of them with curative intent, whereas 85 (27.2%) underwent palliative surgery. Median age was 67.4 (interquartile range 57.1–76.5); 161 (51.4%) were women. Stage distribution according to the 7th edition of the UICC classification was 62 (19.9%) stage IA-IB, 72 (23.1%) stage IIA-IIB, 115 (36.8%) stage IIIA-IIIC, and 63 (20.2%) stage IV patients. Lymph-node metastases occurred in 198 (65.6%) and distant metastases in 63 (20.1%). Of the 313 patients, 15 (4.8%) received neoadjuvant treatment, and 125 (39.9%) postoperative adjuvant treatment (74 chemotherapy, 2 radiotherapy, and 50, both). Survival data and causes of death until October 2016 came from patient records, the Population Register Centre of Finland, and Statistics Finland.

The study was approved by the Surgical Ethics Committee of Helsinki University Hospital (Dnro HUS 226/E6/ 06, extension TMK02 §66 17.4.2013) and the National Supervisory Authority of Welfare and Health gave permission to use the tissue samples without individual consent in this retrospective study (Valvira Dnro 10041/06.01.03.01/2012).

Tissue samples and immunohistochemistry

We collected formalin-fixed and paraffin-embedded surgical tissue samples from the archives of the Department of Pathology, and de-identified and analyzed the tissue samples anonymously. All histological slides were re-evaluated by an experienced pathologist who defined and marked areas representing the highest grade of the individual tumor. Four 1.0-mm cores from each tumor block, two from the invasive front, and two from the center of the tumor, were sampled and embedded in a new paraffin block by a semi-automatic tissue microarrayer (Tissue Arrayer 1, Beecher Instruments Inc., Silver Spring, MD, USA) as previously described [18]. Sections of 4 μm were cut and processed for immunohistochemistry.

Sections were fixed on slides and dried for 12 to 24 hours at 37°C, then they were deparaffinized in xylene and rehydrated through gradually decreasing concentrations of ethanol to distilled water. For antigen retrieval, sections were treated in a PreTreatment module (Lab Vision Corp., Fremont, CA, USA) in Tris-HCl (pH 8.5) and in Tris-EDTA (pH 9) buffer for 20 minutes at 98°C. Sections were stained in an Autostainer 480 (Lab Vision). Tissues were incubated with anti-human Prox1 Antibody (R&D Systems, Inc., Minneapolis, MN, USA; diluted to 1:1800 = 18 $\mu\text{g}/\text{ml}$) overnight at room temperature. For detection ImmPRESS HRP Polymer Detection Kit, Peroxidase, anti-goat IgG (Vector Laboratories, Burlingame, CA, USA) was used. Colon cancer tissue served as a positive control for staining.

Scoring of immunoreactivity

PROX1 immunoreactivity was successfully scored in 273 tumors. We scored cytoplasmic PROX1 intensity in cancer cells as 0 to 3. Negative immunoreactivity was scored as 0, weak positivity 1, moderate positivity 2, and strong positivity 3. All samples were scored independently by two researchers (A.L. and J.H.) without knowledge of clinical status and outcome data. Samples with discordant scores were re-evaluated until consensus was reached. The highest score of the four cores served for further analysis.

Statistical analyses

Associations between PROX1 positivity and clinicopathological variables were assessed by the chi-square test or Fisher's exact test. Disease-specific survival was calculated from date of surgery to death from gastric cancer.

Survival curves were constructed according to the Kaplan-Meier method and compared with the log-rank test. For univariable and multivariable survival analysis, the Cox proportional hazard model had the following covariates entered: age, gender, stage, TNM classification, Laurén's classification, tumor size, and PROX1 expression. Stage, TNM classification, and tumor size were categorical covariates. A p-value of <0.05 was considered statistically significant. All statistical analyses were done with IBM SPSS Statistics version 22.0 (IBM Corporation, Armonk, NY, USA).

Results

Immunohistochemistry and association of PROX1 with clinicopathological variables

Of 273 cases, the cytoplasmic PROX1 reactivity was weakly positive in 99 (36.3%), moderately positive in 39 (14.3%), strongly positive in 17 (6.2%), and negative in 118 (43.2%). In the final analysis, negative and weakly positive was regarded as low expression, and moderately and strongly positive as high expression. Representative images of immunostainings are presented in Fig 1. PROX1 staining occurred mainly in the cytoplasm, and in some strongly stained

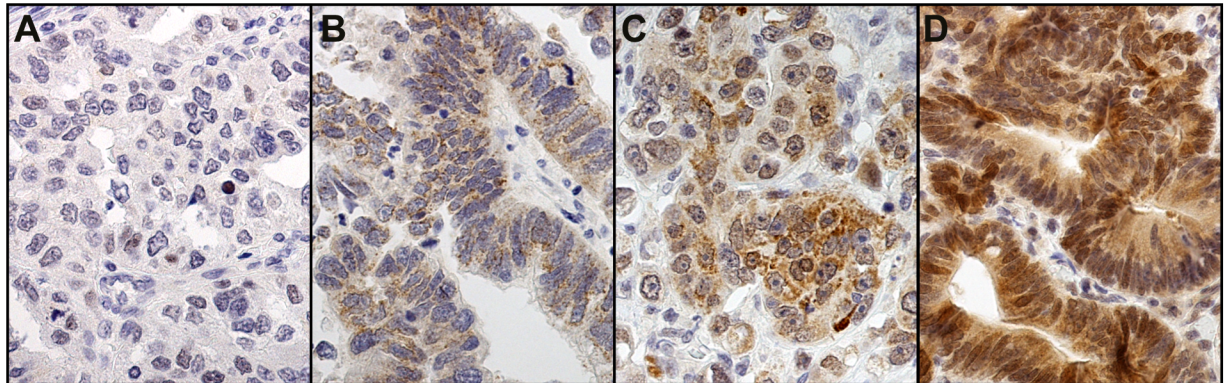


Fig 1. Representative images of PROX1 staining representing gastric cancer tumors with negative (A), weak (B), moderate (C), and strong (D) staining. Original magnification 40x.

<https://doi.org/10.1371/journal.pone.0183868.g001>

samples we noted also nuclear immunopositivity. Low PROX1 immunostaining associated with diffuse cancer type ($p = 0.002$; Table 1). No other clinicopathological variables associated with PROX1.

Survival analyses

In gastric cancer-specific survival analysis according to the Kaplan-Meier method patients with strong and the moderate immunostaining have clearly better survival than patients with weak or negative immunoexpression ($p = 0.033$, log-rank test; Fig 2A). In the final analysis, we combined strong and moderate immunoexpression to represent high expression and weak and negative immunoexpression to represent low expression. Gastric cancer patients with high PROX1 expression had a cancer-specific 5-year survival of 65.6% (95% CI 52.7–78.5), compared to 37.1% (95% CI 30.2–44.0) for patients with low expression ($p = 0.004$, log-rank test; HR = 0.52 (95% CI 0.33–0.82), Fig 2B, Table 2).

In subgroup analysis, PROX1 was a significant marker of better prognosis in patients aged under 66 ($p = 0.007$), among men ($p = 0.019$), and among patients with tumors of less than 5 cm in diameter ($p = 0.030$). PROX1 was a significant marker of better prognosis in the subgroup of intestinal cancer type ($p = 0.025$; Fig 3A) whereas it did not show a prognostic significance among patients with diffuse cancer type ($p = 0.290$; Fig 3B). In other subgroups studied PROX1 did not serve as a prognostic marker.

PROX1 expression remained significant in multivariable analysis (HR = 0.56; 95% CI 0.35–0.90; $p = 0.017$; Table 3). Other independent prognostic factors in multivariable analysis were advanced age and distant metastasis, and tumor size greater than 5 cm.

Discussion

Here we show that cancer-specific 5-year survival was significantly better for gastric cancer patients with PROX1-positive tumors. In multivariable analysis, high PROX1 immunopositivity served as an independent marker of better prognosis. Among patients with intestinal cancer, those with high PROX1 immunostaining had superior survival.

PROX1 was expressed evenly throughout the cytoplasm, and in some strongly stained samples we noted also nuclear positivity. Earlier studies have reported both cytoplasmic and nuclear staining patterns [16,19]. The cytoplasmic PROX1 expression by immunohistochemistry correlates with *PROX1* mRNA amplification [19]. High mRNA levels correlate also with regional lymph node metastasis but not with distant metastasis. Depending on the cancer, the

Table 1. Association of PROX1 with clinicopathological variables in gastric cancer patients.

Clinicopathological variable	n	PROX1				p-value
		Low		High		
		n	%	n	%	
Age, years						
<66	129	104	80.6	25	19.4	0.661
≥66	144	113	78.5	31	21.5	
Gender						
Male	130	100	76.9	30	23.1	0.317
Female	143	117	81.8	26	18.2	
TNM stage						
IA-IB	52	40	76.9	12	23.1	0.375
IIA-IIIB	64	47	73.4	17	26.6	
IIIA-IIIC	100	81	81.0	19	19.0	
IV	56	48	85.7	8	14.3	
pT classification						
pT1	40	30	75.0	10	25.0	0.706
pT2	40	30	75.0	10	25.0	
pT3	85	69	81.2	16	18.8	
pT4	108	88	81.5	20	18.5	
pN classification						
pN0	90	66	73.3	24	26.7	0.246
pN1	37	28	75.7	9	24.3	
pN2	62	52	83.9	10	16.1	
pN3	76	64	84.2	12	15.8	
pM classification						
pM0	217	169	77.9	48	22.1	0.196
pM1	56	48	85.7	8	14.3	
Laurén classification						
Intestinal	111	77	69.4	34	30.6	0.002
Diffuse	154	134	87.0	20	13.0	
Tumor size, cm						
<5 cm	99	73	73.7	26	26.3	0.109
≥5 cm	167	137	82.0	30	18.0	

<https://doi.org/10.1371/journal.pone.0183868.t001>

staining pattern varies. In colonic [4] and hepatocellular carcinomas [6] and in gliomas [15], the PROX1 staining is mainly nuclear, whereas in pancreatic cancer, mainly cytoplasmic staining is observed [9]. The role of cytoplasmic PROX1 expression still remains unknown. One hypothesis is that PROX1 is enriched and activated in the cytoplasm of the cell before being translocated to the nucleus to become functionally active [4].

In gastric cancer, Park et al. [16] studied PROX1 by silencing its expression in cell lines by small interfering RNA against *PROX1*. Cell proliferation was inhibited by *PROX1* knockdown, suggesting that PROX1 may play a role in regulating cell fate by reducing apoptosis as well as by promoting proliferation of gastric cancer cells. They also investigated the prognostic role of PROX1 in 327 gastric cancer patients by immunohistochemistry, finding that the survival of patients with PROX1-positive tumors was significantly worse than for those with PROX1-negative tumors. Unexpectedly, our result contradicted this. Reasons for the difference between their results and the present ones may be several. That 2017 Korean study did not include patients with metastasis. Our chosen antibody was anti-human Prox1 Antibody (R&D Systems

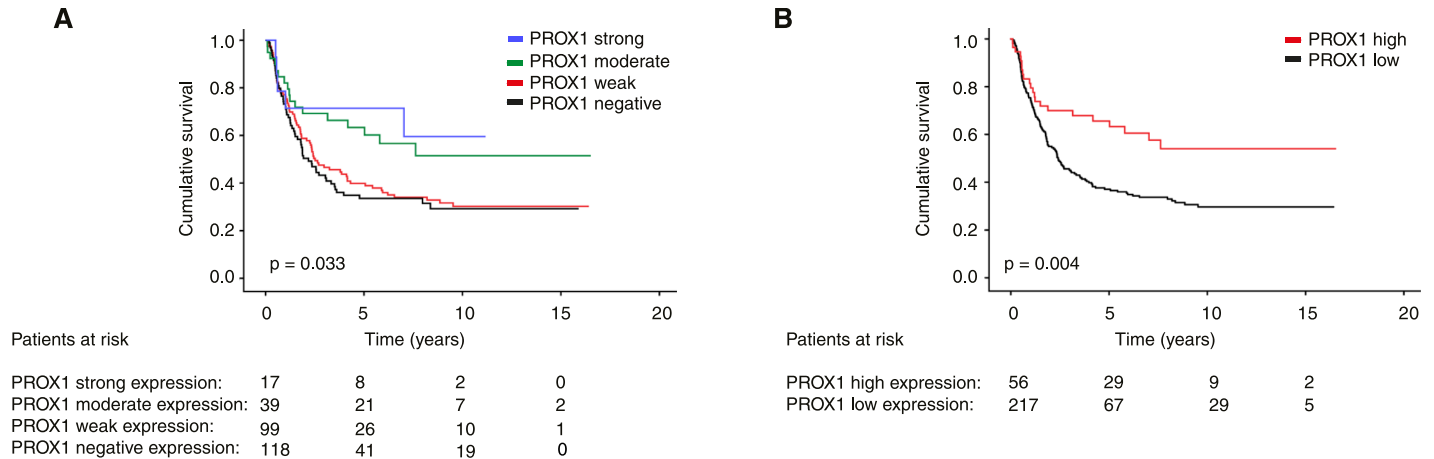


Fig 2. Gastric cancer-specific survival according to the Kaplan-Meier method, (A) cytoplasmic PROX1 immunoreactivity and (B) grouped into high (strong and moderate staining) and low (weak and negative staining) expression. P-value for log-rank test.

<https://doi.org/10.1371/journal.pone.0183868.g002>

Table 2. Kaplan-Meier analysis for disease-specific survival stratified for subgroups of gastric cancer patients.

Subgroup	5-year cumulative survival (95% CI)			p-value
	All patients	PROX1 low	PROX1 high	
PROX1	43.3 (37.4–49.2)	37.1 (30.2–44.0)	65.6 (52.7–78.5)	0.004
Age, years				
<66	47.8 (39.6–56.0)	42.3 (32.5–52.1)	79.3 (63.0–95.6)	0.007
≥66	39.1 (31.1–47.1)	32.0 (22.6–41.4)	53.3 (34.5–72.1)	0.140
Gender				
Male	46.3 (37.7–54.9)	35.5 (25.1–45.9)	68.5 (51.4–85.6)	0.019
Female	40.9 (33.1–48.7)	38.1 (29.1–47.1)	62.1 (42.5–81.7)	0.095
Laurén classification				
Intestinal	52.0 (42.6–61.4)	40.0 (28.2–51.8)	73.7 (57.8–89.6)	0.025
Diffuse	36.7 (29.4–44.0)	35.7 (27.3–44.1)	50.0 (28.0–72.0)	0.290
TNM stage				
IA-IB	93.0 (86.3–99.7)	91.9 (83.1–100)	100	0.264
IIA-IIIB	64.5 (52.5–76.5)	56.0 (40.7–71.3)	93.8 (81.8–100)	0.041
IIIA-IIIC	23.6 (15.4–31.8)	19.2 (10.2–28.2)	36.5 (13.2–59.8)	0.144
IV	5.7 (0–12.0)	2.4 (0–6.9)	25.0 (0–55.0)	0.745
pT classification				
pT1	93.6 (86.5–100)	93.2 (84.2–100)	100	0.275
pT2	77.1 (63.8–90.4)	81.0 (65.9–96.1)	75.0 (44.0–100)	0.789
pT3	32.5 (22.7–42.3)	26.0 (15.4–36.6)	71.4 (47.7–95.1)	0.029
pT4	18.1 (10.7–25.5)	9.9 (3.0–16.7)	40.0 (18.4–61.6)	0.067
pN classification				
pN0	73.8 (65.0–82.6)	67.2 (55.4–79.0)	91.5 (80.1–100)	0.169
pN1	45.0 (28.7–61.3)	35.0 (15.8–54.2)	77.8 (50.6–100)	0.081
pN2	36.3 (24.3–48.3)	32.5 (18.8–46.2)	66.7 (35.9–97.5)	0.092
pN3	15.8 (7.6–24.0)	13.9 (5.1–22.7)	16.7 (0–37.9)	0.957
Tumor size, diameter				
<5 cm	70.6 (62.0–79.2)	67.1 (56.1–78.1)	87.1 (73.4–100)	0.030
≥5 cm	25.6 (18.9–32.3)	20.0 (12.7–27.3)	47.9 (29.5–66.3)	0.111

CI = confidence interval

<https://doi.org/10.1371/journal.pone.0183868.t002>

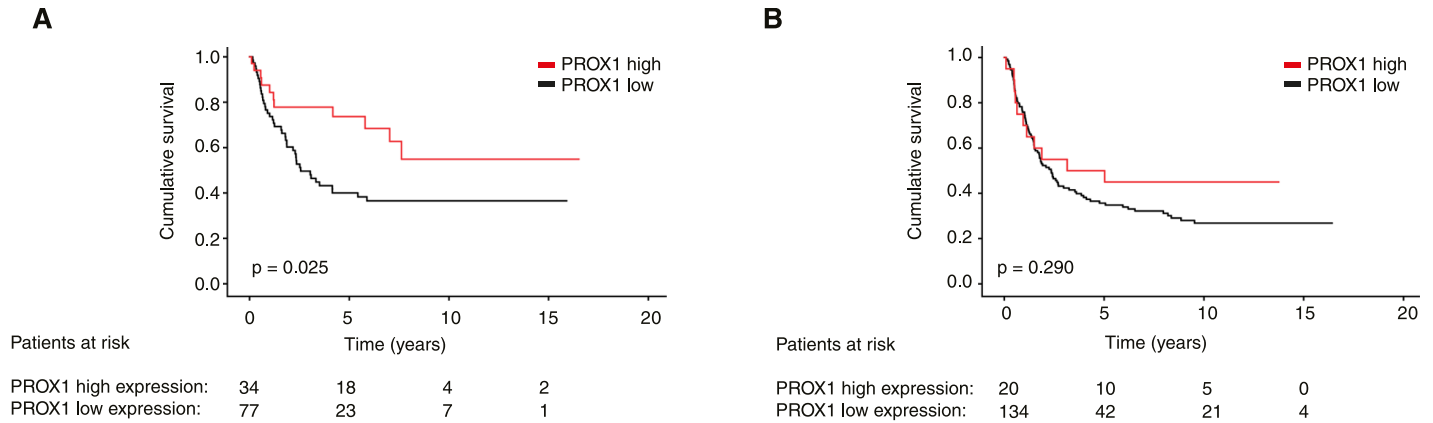


Fig 3. Expression of PROX1 in the subgroups of (A) intestinal and (B) diffuse cancer type in gastric cancer. P-value for log-rank test.

<https://doi.org/10.1371/journal.pone.0183868.g003>

Inc.), whereas they used a polyclonal rabbit anti-human PROX1 (Santa Cruz Biotechnology). They apparently stained whole tissue sections, whereas we utilized the TMA technique. As we scored cytoplasmic intensity in hot-spot tumor areas, they multiplied the stained area by the intensity score, and attributed a score more than or equal to 6 out of 9 for positive grouping. The effects of PROX1 expression on patient prognosis need to be further studied to determine its value as a prognostic tumor marker.

MicroRNAs (miRNAs) are involved in a variety of biological processes, and their dysregulation is linked to tumorigenesis and tumor progression. Earlier studies suggest an important role in tumor biology for miR-489. Zhang et al. [17] studied the expression levels of miR-489 in gastric cancer tissues and cell lines to investigate its role in the regulation of aggressive behavior of gastric cancer cells. They demonstrated that miR-489 is downregulated in human gastric cancer tissues and cell lines. Interestingly, miR-489 transfection reduces PROX1 protein in gastric cancer cells, and PROX1 silencing seems to inhibit proliferation. Further, PROX1 overexpression reverses miR-489-mediated suppression of proliferation and invasion of gastric cancer cells. In gastric cancer tissues, this study found a negative correlation between miR-489 and PROX1 protein expression. Zhang et al. suggest that PROX1 is a direct target of miR-489 in gastric cancer cells. As PROX1 depletion suppresses proliferation, one would expect that low PROX1 expression would correlate with better survival. In contrast, we noted the opposite result, because gastric cancer patients with high PROX1 expression had a better survival than did those with low or no expression.

Petrova et al. [5] in 2008 demonstrated similar findings in colon cancer. According to this study, PROX1 facilitates tumor progression by affecting cell adhesion and polarity. As a downstream effector of TCF/ β -catenin signaling in colorectal cancer, loss of PROX1 does not directly affect cell proliferation, but it rather shifts the transcriptional phenotype of colon cancer cells towards more slowly growing adherent cells. Further, overexpression of PROX1 potentiates intestinal adenoma development, suggesting its important role in formation and growth of in situ lesions, which may progress to carcinoma. In addition to this oncogenic role of PROX1, it may in gastric cancer play several roles, as we found that high PROX1 expression was associated with a better prognosis.

The strength of this study is its large gastric cancer patient cohort with a long and reliable clinical follow-up and survival data. By the TMA method, only small areas of each tumor are evaluated, not whole-tissue sections. On the other hand, the TMA technique allows analysis of large patient cohorts with a homogenous staining method.

Table 3. Cox regression analysis for disease-specific survival of gastric cancer patients.

Variable	Univariable survival analysis			Multivariable survival analysis		
	Hazard ratio	95% CI	p-value	Hazard ratio	95% CI	p-value
Age, years						
<66	1.00			1.00		
≥66	1.38	1.02–1.84	0.034	2.45	1.69–3.57	<0.001
Gender						
Male	1.00			1.00		
Female	1.12	0.83–1.50	0.450	1.16	0.81–1.66	0.406
TNM stage						
IA-IB	1.00			1.00		
IIA-IIB	5.45	2.26–13.2	<0.001	3.22	0.82–12.6	0.093
IIIA-IIIC	15.7	6.83–35.9	<0.001	8.94	1.84–43.5	0.007
IV	46.1	19.6–109	<0.001	26.9	5.25–138	<0.001
pT classification						
pT1	1.00			1.00		
pT2	3.38	1.20–9.47	0.021	1.30	0.33–5.09	0.712
pT3	11.9	4.80–29.7	<0.001	1.89	0.44–8.06	0.392
pT4	19.0	7.71–47.0	<0.001	1.90	0.43–8.41	0.401
pN classification						
pN0	1.00			1.00		
pN1	2.43	1.41–4.20	0.001	0.87	0.44–1.74	0.701
pN2	3.20	2.02–5.09	<0.001	0.69	0.34–1.37	0.283
pN3	6.66	4.32–10.3	<0.001	1.19	0.60–2.35	0.615
pM classification						
pM0	1.00			1.00		
pM1	5.75	4.11–8.03	<0.001	26.9	5.25–138	<0.001
Laurén classification						
Intestinal	1.00			1.00		
Diffuse	1.24	0.96–1.61	0.101	1.31	0.94–1.84	0.113
Tumor size						
≤5 cm	1.00			1.00		
>5 cm	3.71	2.59–5.33	<0.001	1.64	1.05–2.56	0.030
PROX1						
Low	1.00			1.00		
High	0.52	0.33–0.82	0.005	0.56	0.35–0.90	0.017

CI = confidence interval

<https://doi.org/10.1371/journal.pone.0183868.t003>

In conclusion, our study shows that PROX1 expression serves as a marker of favorable prognosis in gastric cancer.

Acknowledgments

We thank Päivi Peltokangas, Olli-Matti Sirviö, and Elina Aspiala for their excellent technical assistance.

Author Contributions

Conceptualization: Caj Haglund.

Data curation: Alli Laitinen, Arto Kokkola.

Formal analysis: Alli Laitinen, Camilla Böckelman.

Investigation: Alli Laitinen, Jaana Hagström, Pauliina Kallio.

Methodology: Caj Haglund.

Project administration: Caj Haglund.

Supervision: Camilla Böckelman, Caj Haglund.

Visualization: Camilla Böckelman.

Writing – original draft: Alli Laitinen, Camilla Böckelman, Jaana Hagström, Arto Kokkola, Pauliina Kallio, Caj Haglund.

Writing – review & editing: Alli Laitinen, Camilla Böckelman, Jaana Hagström, Caj Haglund.

References

1. Torre LA, Bray F, Siegel RL, Ferlay J, Lortet-Tieulent J, Jemal A. Global cancer statistics, 2012. *CA: A Cancer Journal for Clinicians*. 2015; 65: 87–108. <https://doi.org/10.3322/caac.21262> PMID: 25651787
2. Dicken BJ, Bigam DL, Cass C, Mackey JR, Joy AA, Hamilton SM. Gastric adenocarcinoma: review and considerations for future directions. *Ann Surg*. 2004; 241: 27–39. <https://doi.org/10.1097/01.sla.0000149300.28588.23> PMID: 15621988
3. Elsir T, Smits A, Lindström MS, Nistér M. Transcription factor PROX1: its role in development and cancer. *Cancer Metastasis Rev*. Springer US; 2012; 31: 793–805. <https://doi.org/10.1007/s10555-012-9390-8> PMID: 22733308
4. Skog MM, Bono PP, Lundin MM, Lundin JJ, Louhimo JJ, Linder NN, et al. Expression and prognostic value of transcription factor PROX1 in colorectal cancer. *Br J Cancer*. 2011; 105: 1346–1351. <https://doi.org/10.1038/bjc.2011.297> PMID: 21970873
5. Petrova TV, Nykänen A, Norrmén C, Ivanov KI, Andersson LC, Haglund C, et al. Transcription Factor PROX1 Induces Colon Cancer Progression by Promoting the Transition from Benign to Highly Dysplastic Phenotype. *Cancer Cell*. 2008; 13: 13–13. <https://doi.org/10.1016/j.ccr.2008.02.020> PMID: 18455124
6. Shimoda M, Takahashi M, Yoshimoto T, Kono T, Ikai I, Kubo H. A homeobox protein, prox1, is involved in the differentiation, proliferation, and prognosis in hepatocellular carcinoma. *Clin Cancer Res*. 2006; 12: 6005–6011. <https://doi.org/10.1158/1078-0432.CCR-06-0712> PMID: 17062673
7. Yoshimoto T, Takahashi M, Nagayama S, Watanabe G, Shimada Y, Sakasi Y, et al. RNA mutations of prox1 detected in human esophageal cancer cells by the shifted termination assay. *Biochemical and Biophysical Research Communications*. 2007; 359: 258–262. <https://doi.org/10.1016/j.bbrc.2007.05.071> PMID: 17533110
8. Takahashi M, Yoshimoto T, Shimoda M, Kono T, Koizumi M, Yazumi S, et al. Loss of function of the candidate tumor suppressor prox1 by RNA mutation in human cancer cells. *Neoplasia*. 2006; 8: 1003–1010. <https://doi.org/10.1593/neo.06595> PMID: 17217617
9. Saukkonen K, Hagström J, Mustonen H, Juuti A, Nordling S, Kallio P, et al. PROX1 and β -catenin are prognostic markers in pancreatic ductal adenocarcinoma. *BMC Cancer*. BioMed Central; 2016; 16: 472. <https://doi.org/10.1186/s12885-016-2497-5> PMID: 27411302
10. Laerm A, Helmbold P, Goldberg M, Dammann R, Holzhausen H-J, Ballhausen WG. Prospero-related homeobox 1 (PROX1) is frequently inactivated by genomic deletions and epigenetic silencing in carcinomas of the biliary system. *J Hepatol*. 2007; 46: 89–97. <https://doi.org/10.1016/j.jhep.2006.07.033> PMID: 17069925
11. Nagai H, Li Y, Hatano S, Toshihito O, Yuge M, Ito E, et al. Mutations and aberrant DNA methylation of the PROX1 gene in hematologic malignancies. *Genes Chromosomes Cancer*. 2003; 38: 13–21. <https://doi.org/10.1002/gcc.10248> PMID: 12874782
12. Versmold B, Felsberg J, Mikeska T, Ehrentraut D, Köhler J, Hampl JA, et al. Epigenetic silencing of the candidate tumor suppressor gene PROX1 in sporadic breast cancer. *Int J Cancer*. 2007; 121: 547–554. <https://doi.org/10.1002/ijc.22705> PMID: 17415710
13. Yoo J, Kang J, Lee HN, Aguilar B, Kafka D, Lee S, et al. Kaposin-B enhances the PROX1 mRNA stability during lymphatic reprogramming of vascular endothelial cells by Kaposi's sarcoma herpes virus. *PLoS Pathog*. 2010; 6: e1001046. <https://doi.org/10.1371/journal.ppat.1001046> PMID: 20730087

14. Roodakker KR, Elsir T, Edqvist P-HD, Hägerstrand D, Carlson J, Lysiak M, et al. PROX1 is a novel pathway-specific prognostic biomarker for high-grade astrocytomas; results from independent glioblastoma cohorts stratified by age and IDH mutation status. *Oncotarget*. 2016; 7: 72431–72442. <https://doi.org/10.18632/oncotarget.11957> PMID: 27626492
15. Elsir T, Eriksson A, Orrego A, Lindström MS, Nistér M. Expression of PROX1 Is a common feature of high-grade malignant astrocytic gliomas. *J Neuropathol Exp Neurol*. 2010; 69: 129–138. <https://doi.org/10.1097/NEN.0b013e3181ca4767> PMID: 20084020
16. Park K-J, Cho S-B, Park Y-L, Kim N, Park S-Y, Myung D-S, et al. Prospero homeobox 1 mediates the progression of gastric cancer by inducing tumor cell proliferation and lymphangiogenesis. *Gastric Cancer*. 2017; 20: 104–115. <https://doi.org/10.1007/s10120-015-0592-y> PMID: 26759228
17. Zhang B, Ji S, Ma F, Ma Q, Lu X, Chen X. miR-489 acts as a tumor suppressor in human gastric cancer by targeting PROX1. *Am J Cancer Res*. 2016; 6: 2021–2030. PMID: 27725907
18. Kononen J, Bubendorf L, Kallioniemi A, Bärklund M, Schraml P, Leighton S, et al. Tissue microarrays for high-throughput molecular profiling of tumor specimens. *Nat Med*. 1998; 4: 844–7. PMID: 9662379
19. Taban O, Cimpean AM, Raica M, Olariu S. PROX1 expression in gastric cancer: from hypothesis to evidence. *Anticancer Res*. 2014; 34: 3439–3446. PMID: 24982352