

4-19-1991

NEWS AND NOTES 1991, APRIL 19

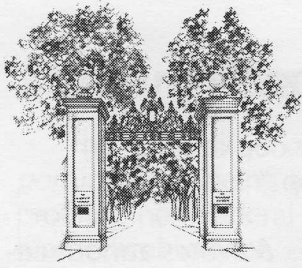
The Rockefeller University

Follow this and additional works at: http://digitalcommons.rockefeller.edu/news_and_notes_1991

Recommended Citation

The Rockefeller University, "NEWS AND NOTES 1991, APRIL 19" (1991). *News and Notes 1991*. Book 13.
http://digitalcommons.rockefeller.edu/news_and_notes_1991/13

This Book is brought to you for free and open access by the The Rockefeller University News and Notes at Digital Commons @ RU. It has been accepted for inclusion in News and Notes 1991 by an authorized administrator of Digital Commons @ RU. For more information, please contact mcsweej@mail.rockefeller.edu.



News & Notes

Fund-raising on target, board learns

Fund-raising for this academic year is running neck and neck with projections, the Executive Committee of the Board of Trustees learned at its meeting this week.

According to a report from Maren Imhoff, Director of Development, the Development Program had reached 85% of its goal by April 15. Included were cash gifts and scheduled pledge payments totaling \$13 million. The year's goal is \$15.5 million.

"I especially want to credit the hard work of those members of the board, led by Dick Furlaud, Alex Forger and Ralph Ablon, who have helped to bring this about," said President David Baltimore. "We are also grateful to David Rockefeller for his superb leadership, and for the dedication and hard work of our Development staff."

The ink had hardly dried on the report when Baltimore was informed of yet another major gift, in the amount of \$150,000, to support publication of *Search*, The Rockefeller University's quarterly magazine, which made its debut last month. News of the gift, from the Carl and Lily Pforzheimer Foundation, was sent from Carl H. Pforzheimer, Jr., who visited the campus last week with his wife and met with *Search* editor Enid

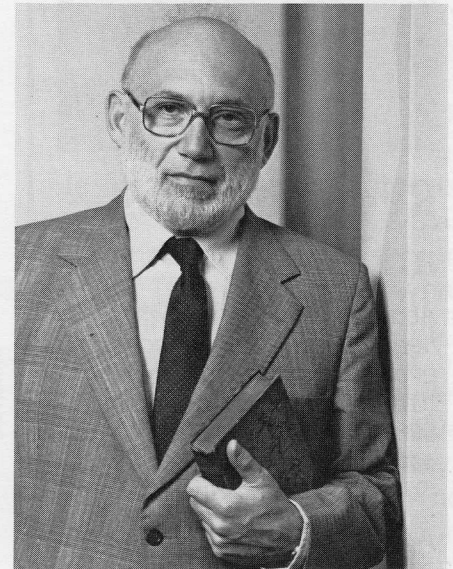
See **Fund-raising** on page 2

First annual Lederberg Lecture is Wednesday

The first annual Joshua Lederberg Distinguished Lecture in Molecular Genetics, endowed by the Raymond and Beverly Sackler Foundation, will be held in Caspary Auditorium on Wednesday, April 24, at 3:45. The speaker will be James F. Crow, Professor Emeritus of Genetics at the University of Wisconsin. His lecture, entitled "Molecular Genetics: What Has It Done for and to Evolution?," is open to all members of the university community.

The Sackler Foundation endowed the series when Lederberg stepped down as President in July 1990. The foundation provides support primarily for medical research in biological and physical sciences, hospitals, education and cultural institutions.

Crow and Lederberg were colleagues at the University of Wisconsin when Lederberg was on the faculty there from 1947 to 1959. Crow, who has published articles and books on genetics since 1939, holds a B.A. in Biology and Chemistry from Friends University in Wichita and a Ph.D. in Zoology from the University of Texas. His research has centered on the mechanisms of evolutionary change, ranging from experimental studies on *Drosophila* populations to measures of mutational load in the human and math-



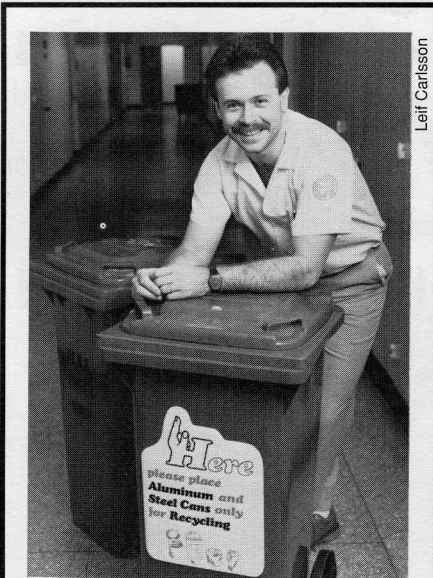
Joshua Lederberg

ematical modeling of changes in gene frequency.

Lederberg returned to the laboratory as Professor last year to pursue two independent but related lines of investigation. Along with Assistant Professor David Thaler and Sackler Investigator Kenneth Zahn, Lederberg is currently exploring hypotheses about environmental effects on gene mutation. They are also collaborating with Adjunct Assistant Professor Michiel Noordewier in a study using artificial intelligence to re-examine established theories in molecular biology.

"We need to take a more sophisticated view of the controversy

See **Lederberg** on page 3



Recycling bins arrive

Above, Peter Cassidy, who heads the university's recycling effort, puts out new collection bins in Founder's Hall. Similar bins have been placed in seven other locations around campus. To find the collection site closest to you, contact the Recycling Center, x8118, or check the locations listed in the *News & Notes* of April 5.

Fund-raising (continued from page 1)

Goldberg, Baltimore and Imhoff. The Pforzheimers have a long-standing interest in improving communications concerning basic research to lay audiences.

The Pforzheimer gift has special significance to the university because *Search* is a valuable asset for the fund-raising effort.

Imhoff's report to the President also noted that a total of \$14 million in outstanding proposals is pending, some of which may be funded during this academic year. Other funds are expected to be raised through a spring annual giving effort. →→

RUWA: resources within reach

"RUWA sponsors the first-ever Rockefeller cookbook."

"RUWA announces a cancer support group."

"RUWA organizes a tour of Sotheby's."

These notices are found in flyers and *News & Notes* announcements. But what is RUWA?"

It is the Rockefeller University Women's Association, and they care about the questions that women of this community have about daily life in Rockefeller, the neighborhoods and New York City. Where there is a need, RUWA seeks out a resource, whether it's helping someone practice English, shopping in local markets or networking for jobs.

Thirty years ago, a small group helped integrate new faculty wives into campus life. Newly reformed in 1986 as RUWA, the group now includes all women associated with the university—faculty, administrative, technical and support staff, students and wives.

The organization maintains a simple, open forum, with no formal meetings. One evening coffee and one lunch are the group's only get-togethers during the year. The activities, suggested by members, are limited only by the imagination and energy of its volunteers.

RUWA co-chairs Elizabeth Merrifield and Ann Ho stress, "We want to encourage every woman to offer suggestions, volunteer to work on an ongoing event, or just participate to any extent possible."

Recognizing the needs and schedules of apartment-bound mothers, working spouses, preoccupied scientists and leisurely senior citizens, RUWA has arranged highly successful events. The activities are free, flexible and scheduled at various times of day. The community response to the behind-the-scenes tours to Sotheby's and Abigail Adams Smith House was so great that additional tours had to be scheduled. More volunteers are needed for continuing projects, including family outings during the summer and assembling the RUWA neighborhood guide for newcomers.

Two important RUWA events are planned for next month. On May 8, Dr. Joseph Bertino from Memorial Sloan-Kettering will lecture on recent developments in cancer detection and treatment. On May 15, three members of the Archive Center will talk on campus about the work of establishing and preserving collections from university staff. This will be followed a few days later by a tour of the center in Pocantico Hills. Check *News & Notes* for full details.

To volunteer or to learn more about RUWA activities, call Ann Ho, x8767.

—by Carol L. Moberg



THE ROCKEFELLER UNIVERSITY WOMEN'S ASSOCIATION

The campus will be seeing a lot more of this symbol in the future. It is the logo of The Rockefeller University Women's Association. Designed by Emilio Grossi, husband of Marie Grossi in the Wang Lab, the logo appears on all of the group's announcements and posters.

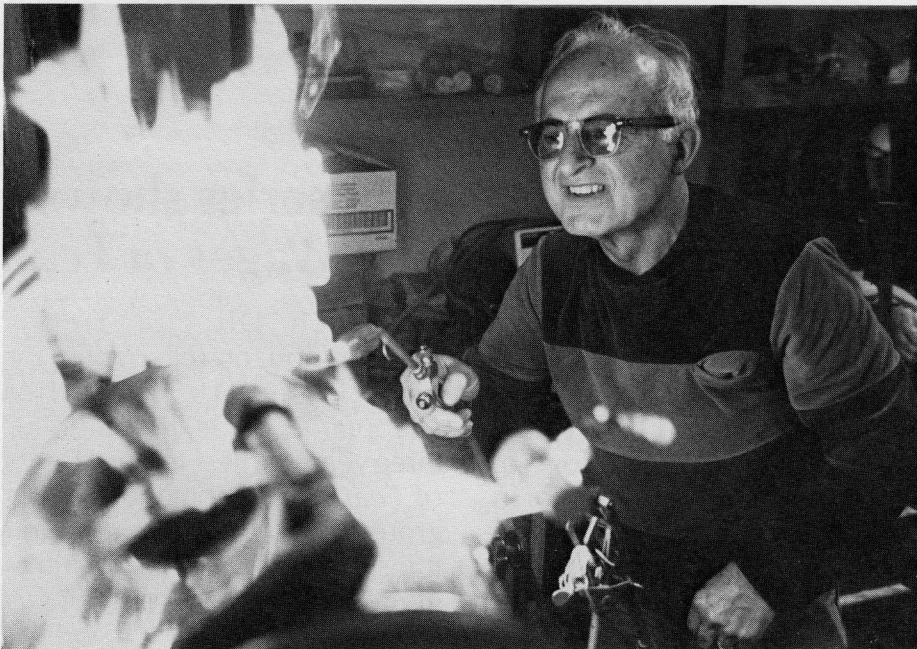
Funding Resources to be replaced

The bimonthly *Funding Resources* bulletin (formerly *Funding Opportunities*) is being replaced with an annual comprehensive booklet profiling non-Federal programs that offer funding support relevant to biomedical science. The new guide, currently being compiled by the Office of Sponsored Programs, will be revised yearly, updating funding resources and their prospective deadlines in a similar fashion to what was done in *Funding Resources*.

The last *Funding Resources*, detailing grant deadlines for April and May, was published February 11. Sponsored Programs is planning to publish the new bulletin at the end of the year; in the meantime, the office will use *News and Notes* to announce private agency deadlines.

Remember! The *NIH Guide* comes to the university weekly via electronic mail and is posted in the public bulletin boards on rockyj or rocky2. To access this information, use the command *notes topic.nih*. Printed copies of the *NIH Guide* are also available from Sponsored Programs. For information, contact Tish Koyen at x8175. →→

Creating glass with class



Bob Reichert

A quirk of fate was responsible for Elco Machek becoming a glassblower, but Rockefeller University, where Machek has been blowing glass for 25 years this June, can be thankful for the event. "I planned to be a machinist in high school," Machek recalls. "But following World War II, the machinists went on strike, and I couldn't get a job doing that kind of work." In November 1946, Machek landed a job as a glassblower in the Bronx and decided he liked the trade. Since coming to Rockefeller in the 1960s, he has made and repaired almost every type of glass tool and instrument used on campus. He has also helped create difficult and unusual pieces designed by scientists. "I still like the work here," he says. "It's interesting."

Lederberg (continued from page 1)

over the role of environment in genetic change," Lederberg said. Toward this end his laboratory will be using modern molecular biology in experiments to study gene mutations in bacteria.

Lederberg is also building on his past work in expert computer systems. He is interested in developing a computer program that incorporates enough information about molecular biology to be able to test the validity of existing scientific theories and generate new hypotheses. Such an expert system would be valuable for re-examining some of the ideas that currently serve as the foundation for scientific inquiry. "This is similar to what we did with DENDRAL," Lederberg said, referring to an expert system he helped pioneer at Stanford to help scientists solve problems in organic chemistry.

Since his retirement from the presidency and his resumption of full-time scientific research, Lederberg has attracted funding support for his lab from several sources. Two university friends and members of The Rockefeller University Council, Louis R. Gary, chairman of the Manhattan Institute for Cancer Research, and Dr. Antonie Knoppers, retired president of Merck and Company, Inc., are assisting in this initiative. The Sackler Foundation has also contributed to the effort by funding the Sackler Investigator post currently held by Zahn.

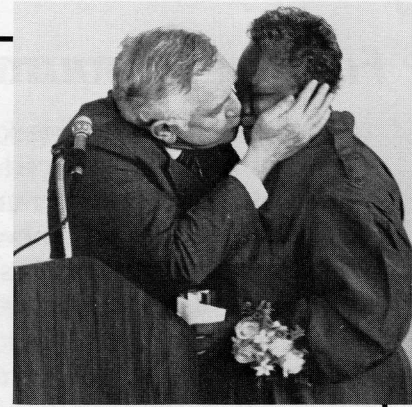
A tea will precede the lecture at 3:15 in Abby Rockefeller Hall. President David Baltimore will host a reception and dinner for invited guests following the talk. →→

Leona leaves after 33 years



Leif Carlsson

Director of Food Services Jerry Barry gave Leona George a big kiss (right) at her retirement party Tuesday in the Tower Building. Ms. George emigrated from the U.S. Virgin Islands in 1957 and joined the Rockefeller in 1958 as a part-time waitress in the Abby dining room. She retired as Special Functions Supervisor last week. Vice President for Business and Finance David Lyons commented that "Leona's determination to have everything just right has been a tremendous asset to our food services through the years." During the celebration, she was presented with a rocking chair, china and a bottle of Johnnie Walker scotch. "I've enjoyed being with you these 33 years," she said. "But I guess all good things must end." At left, she receives a kiss from her son Carl.



Announcements

Cassatt String Quartet performs today

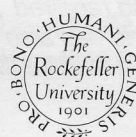
Today's Tri-Institutional Noon Recital will feature the Cassatt String Quartet in concert at Sloan House, 1233 York Avenue. Musicians Laura Goldberg, Muneko Otani, Michiko Oshima and Anna Cholakian will perform Haydn's *Quartet in E-flat major*, Beethoven's *Quartet in G major* and Waggoner's *I Want to Go With The Wolves*. The quartet has won various awards, including First Prize in both the Coleman and Fischhoff Chamber Music Competitions. The concert, co-sponsored by The Rockefeller University Women's Association, is free and open to all.

Wright film shows Thursday

The Lunchtime Film Series presents *Uncommon Places: The Architecture of Frank Lloyd Wright* at 12:05 and 1:05 Thursday, April 25. Wright's love of nature was an important factor in his tranquil designs. This 1985 film attempts to capture Wright's "small integrated universe," featuring dozens of examples of his best-known buildings, including Falling Water, Dana House, Unity Temple and Taliesin.

Film series shows *The Wages of Fear*

French Director Henri-George Clouzot, reknowned for his classic 1955 thriller *Diabolique*, made this nail-biter three years earlier. In *The Wages of Fear*, Yves Montand leads a group of four desperate men transporting a truckload of nitro-glycerin over a treacherous mountain road. The film will be presented by the University Film Series Sunday at 7:30 in Caspary Auditorium.



News&Notes is published on Fridays throughout the academic year by the Public Affairs Office of Rockefeller University. Suggestions for articles are welcome and may be sent to Box 68, or call 570-8967. Articles may also be submitted via electronic mail to *newsnotes*. The deadline for each Friday's issue is the preceding Monday at 5:00 p.m. The Rockefeller University is an equal opportunity employer and has an affirmative action program to increase the employment of women and members of protected groups at all job levels. Editor: Robert Brown. Designer: Patricia Sadiq.