

# Multi-wavelength landscape of the young galaxy cluster RX J1257.2+4738 at $z = 0.866$

## I. The infrared view<sup>\*</sup>

I. Pintos-Castro<sup>1,2,3</sup>, M. Sánchez-Portal<sup>4,5</sup>, J. Cepa<sup>2,1</sup>, J. S. Santos<sup>4</sup>, B. Altieri<sup>4</sup>, R. Pérez Martínez<sup>6,5</sup>, E. J. Alfaro<sup>7</sup>,  
Á. Bongiovanni<sup>1,2</sup>, D. Coia<sup>4</sup>, L. Conversi<sup>4</sup>, H. Domínguez-Sánchez<sup>1,2</sup>, A. Ederoclite<sup>8</sup>, J. I. González-Serrano<sup>9</sup>,  
L. Metcalfe<sup>4</sup>, I. Oteo<sup>1,2</sup>, A. M. Pérez García<sup>1,2</sup>, J. Polednikova<sup>1,2</sup>, T. D. Rawle<sup>4</sup>, and I. Valtchanov<sup>4</sup>

<sup>1</sup> Instituto de Astrofísica de Canarias, 38200 La Laguna, Tenerife, Spain  
e-mail: ipintos@cab.inta-csic.es

<sup>2</sup> Departamento de Astrofísica, Facultad de Física, Universidad de La Laguna, 38200 La Laguna, Tenerife, Spain

<sup>3</sup> Centro de Astrobiología, INTA-CSIC, 28850 Villanueva de la Cañada, Madrid, Spain

<sup>4</sup> Herschel Science Centre, ESAC/ESA, 28691 Villanueva de la Cañada, Madrid, Spain

<sup>5</sup> ISDEFE, 28006 Madrid, Spain

<sup>6</sup> XMM/Newton Science Operations Centre, ESAC/ESA, 28691 Villanueva de la Cañada, Madrid, Spain

<sup>7</sup> Instituto de Astrofísica de Andalucía, CSIC, 18008 Granada, Spain

<sup>8</sup> Centro de Estudios de Física del Cosmos de Aragón, 41001 Teruel, Spain

<sup>9</sup> Instituto de Física de Cantabria (CSIC-Univ. de Cantabria), 39005 Santander, Cantabria, Spain

Received 14 March 2013 / Accepted 13 August 2013

### ABSTRACT

**Context.** Many studies have shown how galaxy properties (e.g. colours, morphology, star-forming (SF) activity, active galactic nuclei population) change not only with redshift, but also with local galaxy density, revealing the important effect of the stellar/halo mass and the environment in the evolution of galaxies. A detailed analysis of the star formation activity in a representative sample of clusters will help us to understand the physical processes that cause the observed changes.

**Aims.** We performed a thorough analysis of the star formation activity in the young massive galaxy cluster RX J1257+4738 at  $z = 0.866$ , with emphasis on the relationship between the local environment of the cluster galaxies and their star formation activity. We present an optical and infrared (IR) study that benefited from the large amount of data available for this cluster, including new OSIRIS/GTC and *Herschel* imaging observations.

**Methods.** Using a multi-wavelength catalogue from the optical to the near-infrared, we measured photometric redshifts through a  $\chi^2$  spectral energy distribution fitting procedure. We implemented a reliable and carefully chosen cluster membership selection criterion including Monte Carlo simulations and derived a sample of 292 reliable cluster member galaxies for which we measured the following properties: optical colours, stellar masses, ages, ultraviolet luminosities and local densities. Using the MIPS 24  $\mu\text{m}$  and *Herschel* data, we measured total IR luminosities and star formation rates (SFRs).

**Results.** Of the sample of 292 cluster galaxies, 38 show far-infrared (FIR) emission with an SFR between 0.5 and 45  $M_{\odot} \text{yr}^{-1}$ . The spatial distribution of the FIR emitters within the cluster density map and the filament-like overdensities observed suggest that RX J1257 is not virialised, but is in the process of assembly. The average star formation as a function of the cluster environment parametrised by the local density of galaxies does not show any clear trend. However, the fraction of SF galaxies unveils that the cluster intermediate-density regions is preferred for the SF activity to enhance, since we observe a significant increase of the FIR-emitter fraction in this environment. The analysis of the extinction distributions of the optically red and blue SF galaxies supports the assumption of the red SF galaxies as a dusty population.

**Key words.** galaxies: clusters: individual: RXJ1257.2+4738 – galaxies: evolution – infrared: galaxies

## 1. Introduction

Evidence has accumulated for decades, proving that the environment plays an important role in the history of galaxy evolution. The range of densities found in the surroundings of galaxy clusters make them ideal laboratories for studying the effects of local environment on their galaxies. In nearby clusters, Dressler (1980) found that red early-type galaxies dominate in high-density regions, while blue late-type galaxies tend to live in low-density environments. At intermediate redshifts, between  $z = 0.2$  and  $z = 0.5$ , the fraction of blue star-forming (SF) galaxies in

clusters increases (the Butcher-Oemler effect, Butcher & Oemler 1984), maintaining the fraction of ellipticals, but decreasing the fraction of S0 (Dressler et al. 1997). Many studies provided additional evidence of galaxy evolution: in distant clusters, infrared (IR) surveys have shown the increase of dusty star formation (Coia et al. 2005; Geach et al. 2006; Saintonge et al. 2008), and X-ray observations have found a growing population of active galactic nuclei (AGN; Martini et al. 2002). Focusing in a single epoch, changes in galaxy properties with clustercentric distance have been identified, such as gradients in colour (Pimblet et al. 2001) and spectral features (Balogh et al. 1999).

The morphology segregation can be understood as a consequence of a morphological transformation of spiral galaxies into S0, because they fall into high-density regions. Nevertheless, it is

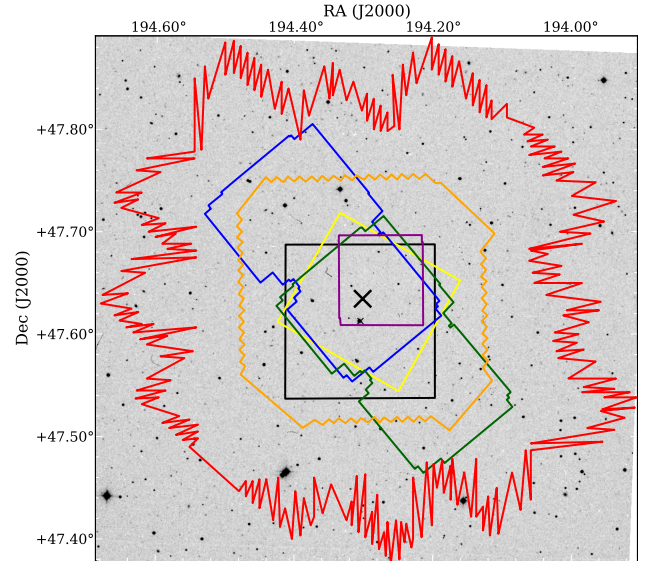
<sup>\*</sup> *Herschel* is an ESA space observatory with science instruments provided by European-led Principal Investigator consortia and with important participation from NASA.

still unknown whether the quenching of the star formation activity is due to the advanced evolution in overdense regions, or to a direct physical effect on the star formation capability of galaxies in dense environments (Popesso et al. 2007). Possible mechanisms proposed to modify the star formation include (Treu et al. 2003; Boselli & Gavazzi 2006) (i) interactions of a galaxy with the gaseous component of the cluster (ram-pressure stripping, thermal evaporation of the interstellar medium (ISM), turbulent and viscous stripping, pressure-triggered star formation); (ii) interactions of cluster galaxies with the cluster gravitational potential (tidal compression and tidal truncation); and (iii) interactions between galaxies (mergers and harassment).

To disclose the nature of the processes that produce the galaxy transformation in clusters we need measurements of star formation activity at different cosmic times across large radial distances and covering a wide range of cluster masses. Measuring the H $\alpha$  and [O II] features in emission line galaxies (ELGs) is a method often used to trace star formation rates (SFRs) in clusters of galaxies (Kodama et al. 2004; Finn et al. 2005; Koyama et al. 2010; Hayashi et al. 2010), usually using narrow-band filters. However, these surveys are sensitive to metallicity and suffer from dust extinction. Observations with mid-infrared (MIR) and far-infrared (FIR) instruments have enabled the study of the dust-obscured star formation in many intermediate- and high-redshift clusters (Koyama et al. 2008; Saintonge et al. 2008; Tran et al. 2010), but these studies are hampered by the lack of spectroscopic confirmation of the emission galaxies.

To overcome these difficulties, we are performing a complete study of the galaxy properties of the cluster RX J1257.2+4738 (hereafter referred to as RX J1257) at  $z = 0.866$  as part of the Galaxy Cluster Evolution Survey (GLACE, Sánchez-Portal et al. 2011, and in prep.). This project aims to study the evolution of the emission-line galaxies in clusters, using tunable filters (TF), in an initial sample of six clusters at redshifts 0.4, 0.63, and 0.86. The GLACE observations include broad-band imaging in the Sloan filters as well as narrow-band imaging performed with the TF of the OSIRIS<sup>1</sup> (Cepa et al. 2003) instrument at the 10.4 m GTC telescope at La Palma, mapping the [O II], [O III] and H $\beta$  lines. TF imaging will allow us to determine accurate cluster membership, reaching a SFR down to  $\sim 2 M_{\odot} \text{ yr}^{-1}$  and to distinguish AGNs (Pintos-Castro et al., in prep.). The galaxy cluster RX J1257 was included in the GLACE sample because at the cluster redshift the lines [O II], [O III] and H $\beta$  fall within atmospheric windows relatively free of sky lines, and furthermore, this cluster has a wealth of ancillary data.

The RX J1257 cluster was first detected in X-rays in the ROSAT data archive, and the  $i'$ -band and  $K_s$ -band follow-up observations found a concentration of red galaxies that confirmed the existence of a cluster. Ulmer et al. (2009) reported the discovery of the spectroscopically confirmed cluster at  $z = 0.866$ , on the basis of an extensive study including *Chandra*, *XMM-Newton*, *Spitzer*, Gemini, Subaru and ARC observations. They detected the diffuse emission of the cluster both in *Chandra* and *XMM-Newton* observations, and modelled that emission with an ellipse centered at RA(J2000) = 12h 57m 12.2s Dec(J2000) = +47° 38' 06.5". The cluster X-ray luminosity is about  $2 \times 10^{44} \text{ erg s}^{-1}$  and its temperature is about 3.6 keV. Ulmer et al. (2009) inferred an X-ray mass of  $(1-5) \times 10^{14} M_{\odot}$  and, based on a velocity dispersion of  $600 \text{ km s}^{-1}$ , they obtained an independent mass estimate of  $6.1 \times 10^{14} M_{\odot}$ . These mass values



**Fig. 1.** Field of view of our observations superimposed on an  $r'$ -band Palomar Schmidt image. The black contour indicates the FoV of OSIRIS/GTC (the region analysed in this work covering  $7.6' \times 7.3'$ ); purple: LIRIS/WHT ( $4.27' \times 4.27'$ ); blue: IRAC(3.6,5.8)/*Spitzer* ( $13.7' \times 7'$ ); green: IRAC(4.5,8)/*Spitzer* ( $13.7' \times 7'$ ); yellow: MIPS/*Spitzer* ( $7.4' \times 8'$ ); orange: PACS/Herschel ( $14.9' \times 14.2'$ ); red: SPIRE/Herschel ( $23.5' \times 21.5'$ ). The cross symbol (x) marks the centroid of the X-ray emission. This cluster shows no clear dominant galaxy.

are consistent with RX J1257 being a massive cluster. Based on the temperature of the intracluster medium (ICM), these authors derived the virial radius of the cluster as  $R_V = 1.05 \text{ Mpc}$ .

The structure of this paper is as follows: in Sect. 2 we present the data sample, including the multi-wavelength catalogue generation. The selection of cluster candidates is explained in Sect. 3. The optical and infrared properties of the selected cluster members are shown in Sect. 4. In Sect. 5 we analyze the environmental dependence of the FIR cluster members. In Sect. 6 we discuss the dependence of the properties of the SF cluster galaxies with the environment, and in Sect. 7 we list the main conclusions of this work.

Throughout this paper we assume a Universe with  $H_0 = 70 \text{ km s}^{-1} \text{ Mpc}^{-1}$ ,  $\Omega_{\Lambda,0} = 0.7$  and  $\Omega_{m,0} = 0.3$ . Magnitudes are listed in the AB system (Oke & Gunn 1983), unless indicated otherwise.

## 2. Observations, data reduction, and catalogue

We used optical and near-infrared (NIR) data of the GLACE project, FIR data from the *Herschel* Space Observatory Guaranteed Time (GT) programme “The star formation history of galaxy clusters” (P.I. B. Altieri), and archival data from the Gemini Observatory (GMOS spectroscopy) and the *Spitzer* Space Telescope (IRAC and MIPS imaging). As can be seen in Fig. 1, the footprints of the observations are very heterogeneous, with the sky area covered by the OSIRIS/GTC images defining the region analysed in this study. This is the area where we estimate to find reliable cluster candidates, including most of the MIR/FIR emitters.

### 2.1. Optical observations

#### 2.1.1. Photometry

Broad-band imaging with SDSS  $g'r'i'z'$  filters was carried out using OSIRIS (Cepa et al. 2003), an imager and spectrograph

<sup>1</sup> Optical System for Imaging and low Resolution Integrated Spectroscopy.

for the optical wavelength range located at the Nasmyth-B focus of the 10.4 m Gran Telescopio de Canarias (GTC). The detector consists of a mosaic of two Marconi CCD42-82 of  $2048 \times 4096$  pixels with a 72-pixel gap between them, covering a total field of view (FoV) of  $8' \times 8'$  ( $7.8' \times 7.8'$  unvignetted field). The pixel scale is  $0.25''$  in the standard mode of  $2 \times 2$  binning.

The observations were obtained in service mode during 22 January and 28 March 2012 as part of a large ESO/GTC programme (ID. 186.A-2012, P.I. M. Sánchez-Portal). The data were gathered in two dark nights under photometric conditions, with a seeing below  $1.1''$ . Total exposure times were  $3 \times 60$  s for  $g'$ ,  $3 \times 150$  s for  $r'$  and  $i'$ , and  $25 \times 80$  s for  $z'$ . Although we have designed the observations with a dithering pattern, we have not covered the gap area to avoid a bright star near the cluster center.

The data were reduced using IRAF<sup>2</sup> procedures. Individual frames were bias subtracted, flat-fielded, aligned, and coadded to produce deep images in each band. For the  $z'$  images, additional fringe patterns were removed by subtracting a master fringe frame obtained by combining  $3 \times 3$  dithered science frames. Astrometric corrections were performed using the Sloan Digital Sky Survey Release 6 catalogue (SDSS-DR6), with `ccxymatch` and `ccmap` tasks. The astrometry accuracy is better than  $0.17''$ . We transformed instrumental magnitudes into observed magnitudes with observations of photometric standard stars, obtained on 23 January 2012, by comparing them with SDSS-DR6. Calculated zero points are  $28.31 \pm 0.02$ ,  $29.05 \pm 0.02$ ,  $28.25 \pm 0.02$ , and  $27.72 \pm 0.03$  for  $g'$ ,  $r'$ ,  $i'$ , and  $z'$ , respectively. We corrected for atmospheric and galactic (Calzetti et al. 2000) extinctions.

Both source detection and photometry were performed with SExtractor (Bertin & Arnouts 1996). The total flux of each source was measured using the SExtractor FLUX\_AUTO parameter. The  $g'r'i'z'$  catalogues included objects with a detection threshold  $>2\sigma$  in all bands, with a completeness level of 25.0, 24.5, 24.2, and 23.5 mag for  $g'$ ,  $r'$ ,  $i'$ , and  $z'$ , respectively. The matched catalogue included 1985 sources (1962  $g'$ -detected, 1979  $r'$ -detected, 1963  $i'$ -detected, and 1859  $z'$ -detected).

### 2.1.2. Spectroscopy

We reduced and analysed the available raw Gemini north GMOS (Hook et al. 2004) observations to spectroscopically confirm 21 cluster members. The data were taken as part of three Gemini programmes, targeting 72 galaxies in total, each with a different mask and instrumental setup. In the GN-2005A-Q-9 programme 12 spectra were taken using multi-slit nod-and-shuffle (N&S) mode, with  $2''$ -wide slits. The mask was exposed  $3 \times 4560$  s using the R400\_G5305 grating blazed at  $7610 \text{ \AA}$ ,  $7640 \text{ \AA}$  and  $7670 \text{ \AA}$ , with the detector binned  $4 \times 4$ , providing a spectral resolution of  $16 \text{ \AA}$ . The MOS mask for the GN-2006A-Q-4 programme consisted of 35 slits of width  $1.5''$ . This mask was exposed using the R400\_G5305 grating for  $3 \times 2500$  s at a central wavelength of  $7500 \text{ \AA}$ , with the detector binned  $2 \times 2$ , producing a spectral resolution of  $8 \text{ \AA}$ . For the GN-2006B-Q-38 programme the multi-slit N&S mode was used to take 31 spectra with  $1.5''$ -wide slits. The R400\_G5305 grating was used blazed at  $7610 \text{ \AA}$  to expose the mask  $5 \times 2560$  s

with the detector binned  $2 \times 2$ , resulting in a spectral resolution of  $8 \text{ \AA}$ .

The data were reduced using the Gemini/GMOS IRAF package. The standard routine was used to carry out bias subtraction, flat-fielding, cosmic ray removal, wavelength calibration, sky subtraction, and extraction into 1D single spectra. All spectra were examined interactively and compared with a variety of spectral line lists. Redshifts were derived by identifying a set of lines at a common redshift, fitting a Gaussian profile to calculate the central wavelength, and taking the average redshift from all detected lines. The majority of redshifts were determined by the [O II]  $3727 \text{ \AA}$  emission line and the Calcium II H+K absorption lines. In addition, several Balmer lines are visible in many spectra. From the total of 72 spectra, 31 were discarded because of the poor quality of the data. Hence, for 41 spectra we measured redshifts between  $\sim 0.19$  and  $\sim 0.89$ , of these 21 were selected as cluster members with redshift between 0.85 and 0.88, corresponding to a velocity dispersion  $\sim \pm 2500 \text{ km s}^{-1}$  relative to the cluster redshift.

### 2.2. Near-infrared observations

*J*-band imaging was carried out on 12 and 13 May 2011 with the NIR imager/spectrograph LIRIS (Long-Slit Intermediate Resolution Infrared Spectrograph, Manchado et al. 2004; Acosta Pulido et al. 2003) on the *William Herschel* Telescope (WHT) as part of the Spanish CAT programme 197-WHT59/11A (P.I. M. Sánchez-Portal). This instrument uses a Rockwell Hawaii 1024  $\times$  1024 HgCdTe array detector, with a pixel scale of  $0.25''$ , yielding a FoV of  $4.27' \times 4.27'$ . The observations were performed by adopting a dithering pattern that consisted of taking exposures in five different positions across the detector, starting at the centre, moving to the lower left quadrant and continuing with the remaining quadrants in a clockwise direction. We took three exposures of 60 s in each of these five positions, and repeated the pattern four times each night giving a total exposure of two hours.

The data were processed using the LIRISDR dedicated software<sup>3</sup> within the IRAF environment. Before any reduction procedure, we corrected the pixel-mapping anomaly of LIRIS with the `lcpixmap` task. The first step was flat-field correction of individual frames with `lmkflat` and `lflatcor`. Then, the complete task `ldedither` was executed. This task computes a sky subtraction, a vertical gradient, and a geometrical distortion correction to finally shift and combine all frames into a single final image.

Photometric calibration was made by estimating zero points by comparing the fluxes of 63 bright sources (selected from five different fields observed during the two nights) with their magnitudes in the 2MASS All-Sky Catalogue. We did not correct for atmospheric extinction because it is negligible at these wavelengths. Astrometry was corrected as in Sect. 2.1.1, and we achieved an accuracy below  $0.19''$ , which is lower than the pixel scale.

We constructed a catalogue in the *J*-band with SExtractor, using FLUX\_AUTO for total fluxes. To avoid spurious detections we set a detection threshold of  $3\sigma$ , obtaining a sample of 947 sources whose limiting magnitude is around 23.5. For many galaxies *J* photometry was not available, due to the small area covered by these observations, but this data point is not critical for the determination of the main parameters (i.e. redshifts, stellar masses, IR luminosities).

<sup>2</sup> IRAF is distributed by the National Optical Astronomy Observatory, which is operated by the Association of Universities for the Research in Astronomy, Inc., under cooperative agreement with the National Science Foundation (<http://iraf.noao.edu/>).

<sup>3</sup> Developed by José Acosta Pulido, see [http://www.iac.es/galeria/jap/lirisdr/LIRIS\\_DATA\\_REDUCTION.html](http://www.iac.es/galeria/jap/lirisdr/LIRIS_DATA_REDUCTION.html)



### 2.3. Mid-infrared observations

The *Spitzer* observations of RX J1257 were obtained with the Infrared Array Camera (IRAC, [Fazio et al. 2004](#)) on 29 December 2006 and with the Multiband Imaging Photometer for *Spitzer* (MIPS, [Rieke et al. 2004](#)) on 2 June 2007. These IRAC and MIPS archival images were obtained from the *Spitzer* public archive. The IRAC observations consisted of 20 frames with an integration time of 100 s in each of the four channels centered at 3.6, 4.5, 5.8, and 8  $\mu\text{m}$ . The FoV of the different IRAC channels did not fully overlap: there are two adjacent fields in the focal plane viewed by the channels in pairs (3.6 and 5.8  $\mu\text{m}$ ; 4.5 and 8  $\mu\text{m}$ ). The MIPS observations were taken in the photometry mode in the 24  $\mu\text{m}$  channel with 30 s integration time per frame, resulting in a total exposure time of 9050 s.

The IRAC corrected basic calibrated data (CBCD) include corrections for column pull-down and banding and remained sufficiently clean for the analysis. We processed these CBCD images to compute overlap correction and to produce a photometrically corrected science mosaic using MOPEX ([Makovoz & Khan 2005](#)). The MIPS 24  $\mu\text{m}$  mosaic exhibited artefacts, particularly jailbars, and gradients. To remove the artefacts we used a self-calibration script which performs background subtraction, source detection, and coaddition of background-subtracted images to create a flat and flat-fielding of the basic calibrated data (BCD) images. Finally, we created the mosaic using our self-calibrated BCD.

To extract IRAC fluxes we used APEX (the point-source extraction package of MOPEX), performing detection on co-added data, and point-source fitting photometry on the individual frames. We ran APEX with the default parameters and applied a small flux correction to account for differences in normalisation between the IRAC data and APEX. The extracted catalogues included 2170, 2191, 2057, and 1085 objects, reaching completeness levels of 22.5, 22.0, 20.5, and 20.5 mag for the 3.6, 4.5, 5.8, and 8  $\mu\text{m}$  bands, respectively. MIPS 24  $\mu\text{m}$  fluxes were measured by combining SExtractor and APEX utilities. We detected and extracted sources running SExtractor with a detection limit of  $3\sigma$ , finding that some clear sources were lost due to inaccurate deblending. Hence, we made an auxiliary list of sources and extracted them using the ‘‘APEX User List’’ module. We obtained a catalogue of 297 sources complete up to 19.2 mag for the 24  $\mu\text{m}$  band.

### 2.4. Far-infrared observations

The *Herschel* maps using the PACS photometer at 100 and 160  $\mu\text{m}$  and the SPIRE photometer at 250, 350 and 500  $\mu\text{m}$  were observed on 28 May 2011 and 22 November 2010, respectively. The PACS observations were acquired in prime mode and consist of two crossed-square maps of 9075 s each at the nominal scan speed of 20 arcsec/s. The scan maps had 30 legs of 10 arcmin length, separated by 20 arcsec, and the pattern was repeated six times. The SPIRE bands, which reach confusion relatively fast, have 2047 s total integration time per channel. PACS data were processed in the HIPE environment ([Ott et al. 2006](#)). The data cubes were processed with a standard pipeline, including a sliding high-pass filtering on the detector time lines to remove detector drifts and 1/f noise with an iterative masking of the sources. We extracted flux densities via standard aperture photometry techniques, and the PACS uncertainties include contributions from instrumental noise and absolute flux calibration. The projected maps have a pixel size of 2'' at 100  $\mu\text{m}$  and 3'' at 160  $\mu\text{m}$ .

**Table 1.** Summary of datasets.

Instrument	Band	N <sup>o</sup> of sources Total/Region <sup>a</sup>	Completeness
OSIRIS	<i>g'</i>	1962/1962	25.0 mag
	<i>r'</i>	1979/1979	24.5 mag
	<i>i'</i>	1963/1963	24.2 mag
	<i>z'</i>	1859/1859	23.5 mag
LIRIS	<i>J</i>	947/947	23.5 mag
IRAC	3.6 $\mu\text{m}$	2170/1019	22.5 mag
	4.5 $\mu\text{m}$	2191/1128	22.0 mag
	5.8 $\mu\text{m}$	2057/848	20.5 mag
	8 $\mu\text{m}$	1085/550	20.5 mag
MIPS	24 $\mu\text{m}$	297/250	19.2 mag
PACS	100 $\mu\text{m}$	212/81	4.2 mJy
	160 $\mu\text{m}$	160/62	9.0 mJy
SPIRE	250 $\mu\text{m}$	614/74	17.4 mJy
	350 $\mu\text{m}$	543/69	18.9 mJy
	500 $\mu\text{m}$	443/56	20.4 mJy

**Notes.** <sup>(a)</sup> Number of sources in the region that correspond with the FoV of OSIRIS/GTC images.

For the PACS 100 and 160  $\mu\text{m}$  data we produced blind-detection catalogues using SExtractor. We performed aperture photometry considering a radius of 6'' in the 100  $\mu\text{m}$  channel and 9'' in the 160  $\mu\text{m}$  band, which were then corrected to compensate for flux loss outside that area using the tabulated values in [Müller et al. \(2011\)](#). The  $3\sigma$  sensitivity limits are 4.2 mJy at 100  $\mu\text{m}$  and 9.0 mJy at 160  $\mu\text{m}$ .

SPIRE fluxes were estimated using SUSSEXtractor ([Smith et al. 2012](#)). For SPIRE 250  $\mu\text{m}$  we compiled a blind catalogue with a detection threshold of  $3\sigma$ . For SPIRE 350 and 500  $\mu\text{m}$  we used the 250  $\mu\text{m}$  prior positions. For FIR undetected sources we considered the following upper limits: 3.0, 6.0, 13.4, 15.7, and 18.8 mJy for 100, 160, 250, 350, and 500  $\mu\text{m}$ , respectively. The catalogues included 212, 160, 614, 543, and 443 sources in each band. The total FIR luminosity at  $3\sigma$  is estimated to be  $2.4 \times 10^{11} L_{\odot}$ .

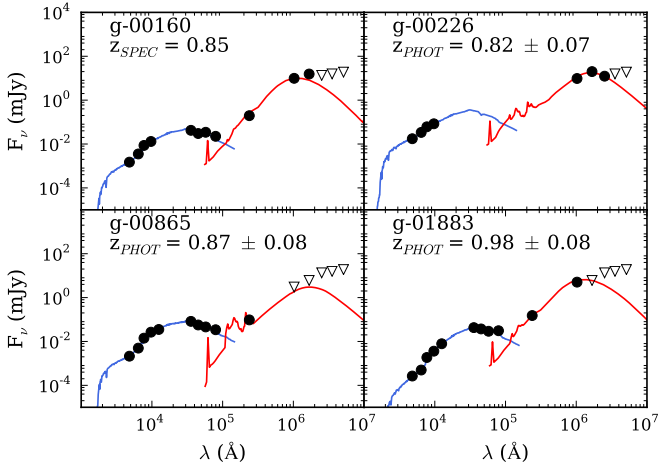
### 2.5. Optical/near-infrared catalogue

With the aim of building a multi-wavelength catalogue that includes all detected sources, we cross-matched all individual catalogues, from optical to NIR, using the nearest-neighbour technique. With the optical catalogue as reference, we carried out consecutive matches towards longer-wavelength catalogues, associating the position of the shortest wavelength (typically the *g'*-band) for each source. The catalogue includes 1979 sources detected in any optical band. Following the methodology of [de Ruiter et al. \(1977\)](#), we estimated maximum-error radii of 2'' for optical and *J*-band catalogues and 3'' for the IRAC bands and made a quantitative analysis of our procedure, obtaining completeness and reliability values higher than 98% and 82%, respectively. This catalogue was used to determine the photometric redshifts.

After defining the cluster-candidate sample using the photometric redshifts (see the next section), we proceeded to include the MIR/FIR data (see Sect. 3.3).

## 3. Determining the cluster members

In addition to the 21 spectroscopic cluster galaxies, we built a robust sample of photometrically selected cluster candidates



**Fig. 2.** Example of SED fitting for a representative sample of the FIR cluster galaxies: one spectroscopic cluster member, one Herschel-only detected, one MIPS-only detected and one detected in both MIPS and Herschel. Black filled circles show the observed photometry of each source, open triangles show upper limits. Blue curves represent the BC03 template that best fit the stellar part of the spectrum from the optical to IRAC  $8\mu\text{m}$ . Red curves are the CE01 templates that best fit the fluxes from IRAC  $8\mu\text{m}$  to SPIRE  $500\mu\text{m}$ .

following the selection steps outlined in the next subsections in the area enclosed by the OSIRIS field of view.

### 3.1. Spectral energy distribution fitting

Using our optical/NIR catalogue, we computed the photometric redshifts with the *LePhare* code (Ilbert et al. 2006). *LePhare* computes photometric redshifts based on a  $\chi^2$  spectral energy distribution (SED) template-fitting procedure. To perform the SED-fitting we used the Bruzual & Charlot (2003, hereafter BC03) population synthesis models, with star formation histories exponentially declining with time as  $e^{-t/\tau}$ , to fit the stellar part of the spectrum. We included the bands between  $g'$  and IRAC  $8\mu\text{m}$ . The complete template library was built considering three different metallicities ( $0.2Z_{\odot}$ ,  $0.4Z_{\odot}$ , and  $Z_{\odot}$ ) and nine different values of  $\tau$  (0.1, 0.3, 1.0, 2.0, 3.0, 5.0, 10.0, 15.0, and 30.0 Gyr) with 57 steps in age, and applying the Calzetti et al. (2000) extinction law with ten different values of  $E(B - V)$  (0.0, 0.1, 0.2, 0.3, 0.4, 0.5, 0.6, 0.7, 0.8, and 0.9). We assumed the initial mass function (IMF) of Chabrier (2003) and constrained the derived age of each galaxy to be younger than the age of the Universe at the galaxy redshift. In Fig. 2 some examples of the SF cluster member SED-fittings are shown.

### 3.2. Cluster galaxies selection

To determine the most adequate photometric redshift range to provide a robust set of cluster member candidates we carried out Monte Carlo simulations. We created 600 mock catalogues by randomly varying the flux of each source in each band within a Gaussian distribution with a deviation proportional to the flux errors. Since the  $1\sigma$  flux errors obtained with SExtractor are unrealistically small, we assigned as error a percentage of the flux depending on the detection threshold of each source. Thus, for sources with a detection threshold up to  $3\sigma$  the deviation is 30% of the flux, for sources with  $4\sigma$  it is 25%, for sources with  $5\sigma$  it

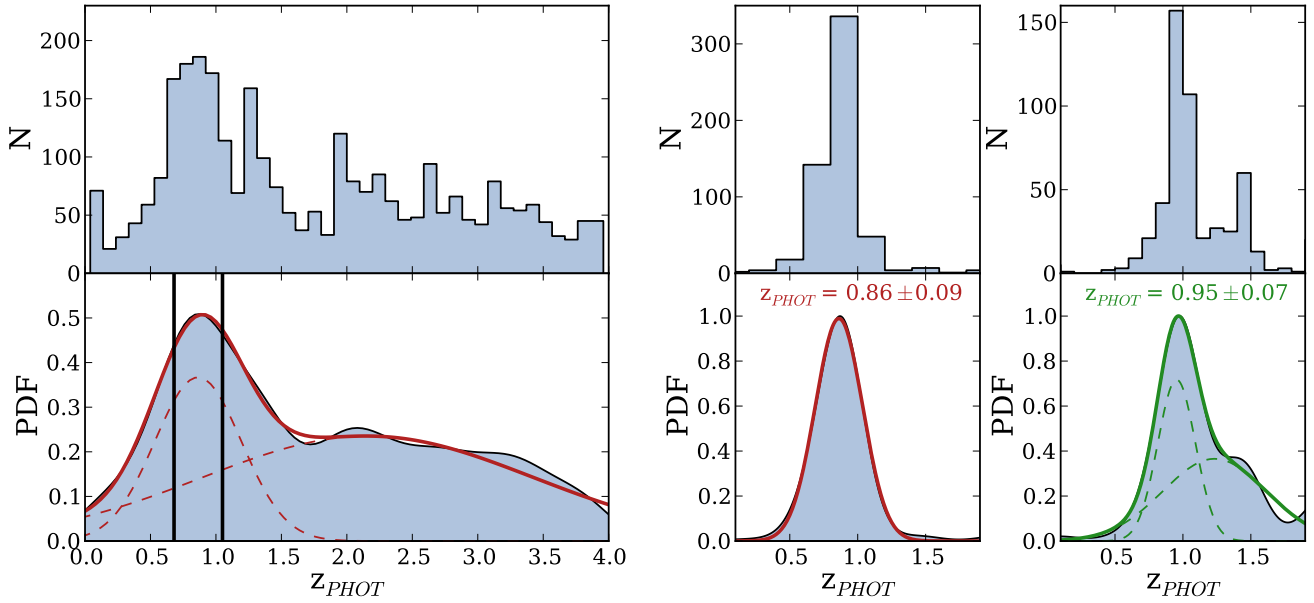
is 20%, and for sources with a detection threshold down to  $6\sigma$  the deviation is 10% of the flux. After running *LePhare* for each mock catalogue, we obtained 600 photometric redshift distributions with a clear peak at the cluster redshift. We estimated the photometric redshift range of the cluster by fitting a Gaussian function. Each photometric redshift distribution was smoothed with a Gaussian kernel to fit a double Gaussian function to the probability density function. The second Gaussian function was necessary because of a second peak around a redshift of 2, which increases the right wing of the first Gaussian function shifts its centre. Considering the parameters of the first Gaussian function fitted, we defined the photometric cluster range to be  $1\sigma$  wide centred at the average central position, i.e.  $0.886 \pm 0.185$ .

Furthermore, to perform a refined selection of robust cluster member candidates we used the photometric redshift distribution for each object resulting from the set of 600 simulations. In a similar way to the procedure of determining the redshift range, we applied a Gaussian kernel to smooth the distribution and fitted a Gaussian function. When the probability density distribution of photometric redshifts had two peaks, a double Gaussian was fitted instead. The criterion we used to consider a source as a cluster candidate is that a  $1\sigma$  width centred at the central position of the best-fit Gaussian is included in the cluster redshift range. When a double Gaussian was needed we considered only the highest peak. Figure 3 shows examples of the photometric redshift distributions obtained for one mock catalogue and two galaxies selected by the method as cluster members. With this criterion we extracted an initial candidate sample of 317 galaxies. As shown in Fig. 4, if we consider only the photometric redshift value of each source, the actual photometric redshift range is  $z_{\text{PHOT}} = [0.73, 1.02]$ . Additionally, we visually inspected the sample to compare the appearance of the photometric sample with the spectroscopically confirmed cluster members, which made us discard one foreground source because of its angular size.

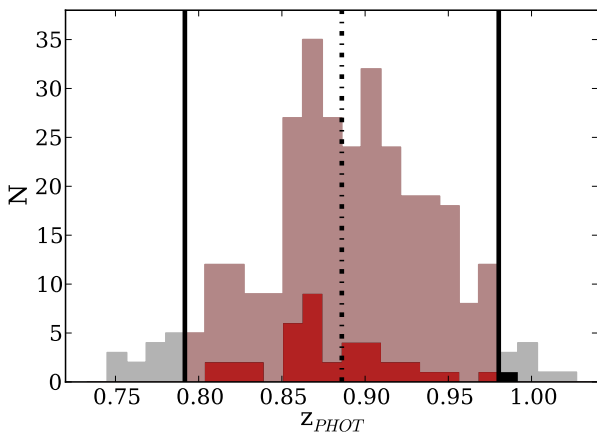
To test the quality of the photometric redshifts, we compared the derived photometric values with the sample of spectroscopic redshifts available. From the 41 spectra obtained, see Sect. 2.1.2, only 35 have the optical photometry needed to derive reliable photometric redshifts (20 cluster members and 15 interloper galaxies). We estimated the redshift accuracy as the median of  $\sigma_{\Delta z/(1+z_{\text{SPEC}})}$ , where  $\Delta z = z_{\text{PHOT}} - z_{\text{SPEC}}$ , and defined the percentage of catastrophic errors as the sources with  $|\Delta z|/(1+z_{\text{SPEC}}) > 0.15$ . The quantitative estimation of our method results in an accuracy of  $\sigma_{\Delta z/(1+z_{\text{SPEC}})} = 0.05$  and a percentage of catastrophic errors of 34%. We emphasize that the selection method of the cluster members based on the photometric redshifts is optimised for the cluster redshift, therefore, we obtained an accuracy of  $\sigma_{\Delta z/(1+z_{\text{SPEC}})} = 0.04$  when we considered only the spectroscopic cluster sources and none of the photometrically selected sources have  $|\Delta z|/(1+z_{\text{SPEC}}) > 0.15$ .

The mean error of the cluster galaxies  $z_{\text{PHOT}}$ , calculated with the  $\sigma$  of the fitted Gaussian, is 0.08. This value corresponds to  $\sigma_{\Delta z/(1+z_{\text{SPEC}})} \sim 0.045$  at the cluster redshift  $z = 0.866$ , which is consistent with the median of  $\sigma_{\Delta z/(1+z_{\text{SPEC}})}$  derived from the comparison of the spectroscopic and photometric redshift cluster sample.

Finally, we defined a narrower photometric redshift range using the estimated accuracy at the cluster redshift. The value of  $\sigma_{\Delta z/(1+z_{\text{SPEC}})}$  results in  $\sim 0.094$  at the photometric cluster central position, which corresponds to a photometric redshift range of  $z_{\text{PHOT}} = [0.79, 0.98]$  (see vertical lines in Fig. 4). The final sample includes 292 robust cluster candidates, of which 21 are spectroscopic members.



**Fig. 3.** Photometric redshift histograms (*top*) and their probability density distributions (*bottom*) for one Monte Carlo simulation (*left*), one cluster galaxy fitted with a simple Gaussian (*centre*), and an other cluster galaxy fitted with a double Gaussian (*right*). Solid-coloured curves show the best fit obtained in each case, and dashed coloured curves show the individual Gaussian function for the double Gaussian fits. Black vertical lines indicate the locus of the photometric cluster range  $z_{\text{PHOT}} = [0.70, 1.07]$ .



**Fig. 4.** Histogram of the redshifts obtained for the initial candidate sample (black) and for the final sample of 292 robust cluster candidates, 21 spectroscopic and 271 photometric (red). The filled histogram represents the FIR-emitter sample. The dot-dashed line at 0.886 indicates the locus of the photometric redshift of the cluster, and the solid lines show the final photometric range we have considered.

### 3.3. Far-infrared cluster sample

To build the FIR-emitter cluster sample, we cross-matched this full sample of 292 robust cluster candidates with the MIR/FIR catalogues using the nearest-neighbour technique. Following the methodology of [de Ruiter et al. \(1977\)](#), we considered a maximum-error radius of  $4''$  for the MIPS and PACS catalogues and  $6''$  for the SPIRE bands. The initial FIR-matched catalogue contains 67 sources. Due to the poor accuracy of the criterion which is based only on distance for the FIR counterparts, we made a visual inspection and analysed thumbnails of  $r'$ , IRAC  $8\mu\text{m}$ , MIPS, PACS, and SPIRE bands, for each of these sources. From the initial sample of 67 FIR emitters, we discarded 15 sources because of confusion or blending problems, and 14 sources did not match the longest wavelengths

of *Herschel*. As a result, we obtained a reliable FIR cluster sample of 38 galaxies, 32 sources MIPS-only detected and one *Herschel*-only detected (this source is outside the MIPS FoV).

## 4. Optical and infrared galaxy properties

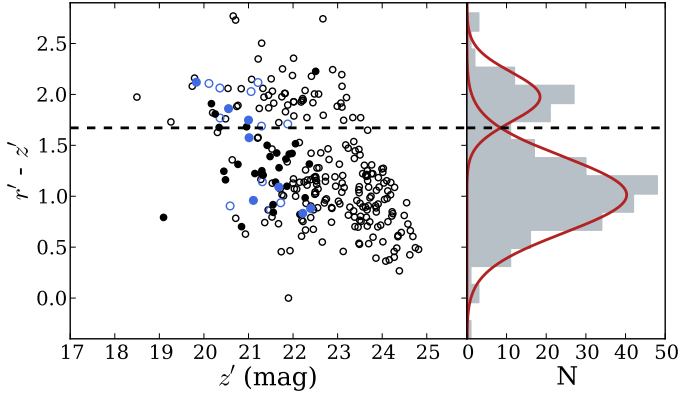
### 4.1. Optical colours of cluster galaxies

Early-type cluster galaxies are known for the tight correlation between colour and absolute magnitude ([Visvanathan & Sandage 1977](#); [Tully et al. 1982](#); [Bower et al. 1992](#)). [Bell et al. \(2004\)](#) also found that rest-frame colours for field galaxies are bimodal at all redshifts up to  $z \sim 1$ . We used this colour bimodality to define a threshold between optically red and blue galaxies. Figure 5 shows the colour–magnitude diagram (CMD) of the cluster members (colours were calculated in the observed frame, i.e. no  $K$ -correction was applied), and their  $r' - z'$  colour distribution. Although the CMD merely shows a tentative red sequence, the bimodality of the colour distribution is clearly seen. Therefore, fitting a Gaussian function to each colour peak, we defined the boundary between optical red and blue galaxies as the intersection point between the two curves. The resulting threshold is  $r' - z' = 1.67$ .

### 4.2. Properties derived by optical SED-fitting

As mentioned in Sect. 3.1, we used the *LePhare* code to fit our multi-wavelength data with a set of optical/NIR SED templates from BC03. These models are generated with well-known physical properties, therefore the resulting best-fit SED contains all the information about the stellar population of that particular galaxy. *LePhare* is designed to extract the physical information on individual galaxies and to provide several parameters as an output. We fixed the redshift to the spectroscopic value for the 21 spectroscopic cluster members and to the central position of the best-fit Gaussian for the 271 photometric cluster candidates. Fixing the redshift for each source, we executed





**Fig. 5.** Colour–magnitude diagram  $r' - z'$  vs.  $z'$  (right) and the  $r' - z'$  colour distribution (left) of the cluster members. Open circles show the cluster members sample and filled circles are the FIR-emitter cluster sample. Blue circles are spectroscopic sources, and black circles are photometric cluster candidates. The red curves show the best-fit Gaussian functions and the dot-dashed black line indicates the boundary between optical red and blue galaxies.

*LePhare* with the BC03 template library to obtain the best-fit stellar masses, ages, extinctions, and UV luminosities for the cluster sample.

We can estimate the  $1\sigma$  uncertainties of these property as half the difference between the properties values for  $\Delta\chi^2 = 1$  in their probability distribution. Using the *LePhare* code, these values are labelled `_INF` and `_SUP`. The cluster galaxies cover the range of stellar masses  $M_\star = [6.7 \times 10^7, 8.8 \times 10^{11}] M_\odot$ , and the range of UV luminosities  $L_{UV} = [9.7 \times 10^6, 3.8 \times 10^{11}] L_\odot$ .

#### 4.3. Infrared luminosities and star formation rates

To fit the IR part of the SED we used the templates of Chary & Elbaz (2001, hereafter CE01). *LePhare* allows us to fit the optical/NIR part of the spectra separately from the MIR/FIR part and provides the total infrared luminosity ( $L_{IR}$ ), integrating the SED from 8 to  $1000\mu\text{m}$  (rest frame). Of the 38 FIR emitters, 32 have been detected only in the MIPS  $24\mu\text{m}$  images, 1 only in *Herschel* bands, and the remaining 5 sources have both MIPS and *Herschel* detections. For the 32 MIPS  $24\mu\text{m}$ -only emitters, the total IR luminosity was also computed using a single-band  $24\mu\text{m}$  to  $L_{IR}$  extrapolation as described in CE01, verifying that the two methods produce compatible results. Since there are only 5 FIR emitters with both MIPS  $24\mu\text{m}$  and *Herschel* detections, a correction for the total IR luminosity could not be estimated for the MIPS  $24\mu\text{m}$ -only sources.

The star formation rate is derived from the  $L_{IR}$  according to the Kennicutt (1998) relation modified for the Chabrier IMF (Chabrier 2003; Erb et al. 2006),

$$SFR(M_\odot \text{ yr}^{-1}) = 2.5 \times 10^{-44} L_{IR} \quad (\text{erg s}^{-1}). \quad (1)$$

This simple conversion is consistent with the SFRs estimated by scaling the extinction-corrected  $H\alpha$  flux, as shown by Domínguez Sánchez et al. (2012). Thus, we calculated the specific star formation rate ( $sSFR = SFR/M_\star$ ) in a coherent way.

The 38 FIR cluster galaxies cover the range of IR luminosities  $L_{IR} = [5.3 \times 10^9, 4.7 \times 10^{11}] L_\odot$ , which corresponds to a range of star formation rates of  $SFR = [0.5, 45] M_\odot \text{ yr}^{-1}$ . For the six FIR emitters detected in *Herschel*, the IR luminosities are higher than  $1.7 \times 10^{11} L_\odot$ , and the corresponding SFRs exceed  $16 M_\odot \text{ yr}^{-1}$ . These lower limits are compatible with the  $3\sigma$   $L_{IR}$  threshold estimated for the *Herschel* data in Sect. 2.4.

The peak of the IR luminosity distribution is located at  $\sim 5.2 \times 10^{10} L_\odot$  ( $\sim 5.0 M_\odot \text{ yr}^{-1}$ ), implying that below this IR luminosity the sample is probably incomplete. Of 38 FIR emitters, 19 are above this limit and 12 are in the luminous infrared galaxies range (LIRGs). Because of the reduced number of FIR-cluster candidates, we eventually decided to work with the full sample of 38 objects and kept in mind that the outcome may be affected by the lack of completeness.

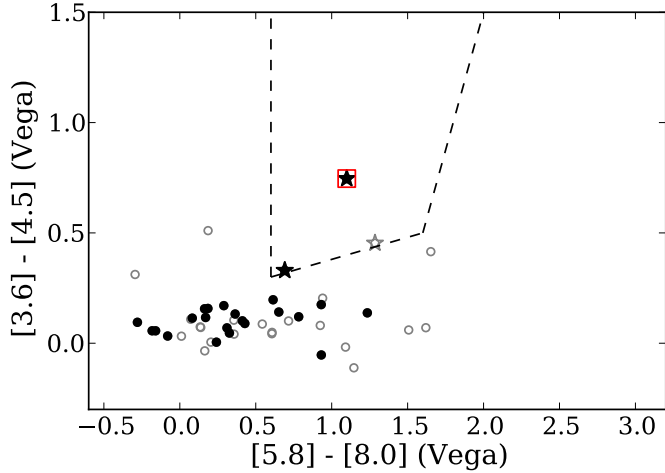
Using the UV luminosity obtained with the SED-fitting method and the Kennicutt (1998) calibration, we estimated the UV contribution to the SFR. With a mean contribution of 3%, we considered that the  $SFR_{UV}$  is negligible and defined the total SFR as the SFR derived from the total IR luminosity. This consideration implies that for this study only galaxies with FIR emission are defined as SF galaxies. We realize that the cluster candidates not detected in the FIR could be forming stars with rates below our completeness limit of  $\sim 5.0 M_\odot \text{ yr}^{-1}$ , but for simplicity, we consider the FIR-emitter sample as SF galaxies and the remaining cluster candidates as quiescent galaxies hereafter.

Many studies have reported the correlation between the SFR and the stellar mass of SF galaxies over a wide range of redshifts (Brinchmann et al. 2004; Noeske et al. 2007; Elbaz et al. 2007; Daddi et al. 2007). Elbaz et al. (2011) have assumed a slope for this correlation of 1 at all redshifts to define a main-sequence mode of star formation with the median sSFR at a given redshift. In the right panels of Fig. 11 we show the SFR and sSFR of the FIR emitters as a function of the stellar mass. In the upper panel we include the SFR- $M_\star$  correlation fitted by Eq. (4) of Elbaz et al. (2007) using GOODS field data. In the lower panel we show the  $sSFR_{MS}$  for RX J1257 estimated with Eq. (13) of Elbaz et al. (2011), considering that the age of the Universe at the cluster redshift is 6.32 Gyr. The region above the dash-dotted line corresponds to the sSFR region of starburst, as defined by Elbaz et al. (2011). Both panels show that almost all SF galaxies fall in or below the regime of main-sequence galaxies.

#### 4.4. AGN contamination

As supported by previous studies (Atlee et al. 2011, and references therein), it is expected that a significant fraction of the IR emission from galaxies within the cluster is produced by AGN activity instead of SF processes. The authors of the GLACE tunable filter  $H\alpha/[NII]$  survey of the intermediate-redshift cluster C10024.0+1652 at  $z = 0.395$  (Sánchez-Portal et al., in prep.; Pérez-Martínez et al. 2012) derived that  $\sim 20\%$  of emission-line galaxies (ELG) host an AGN by means of a  $[NII]/H\alpha$  vs.  $EW(H\alpha)$  diagnostic diagram (Cid Fernandes et al. 2010). At higher redshift, Lemaux et al. (2010) investigated the nature of the  $[OII]$  emission in the RX J1821.6+6827 cluster at  $z \sim 0.82$  and in the C11604 supercluster at  $z \sim 0.9$  (i.e. a redshift range comprising that of RX J1257), finding that at least  $\sim 20\%$  of galaxies with  $M_\star > 10^{10} - 10^{10.5} M_\odot$  contain a LINER/Seyfert component that can be revealed with line ratios. In fact, within the framework of the on-going GLACE TF emission-line survey of RX J1257 (Pintos-Castro et al., in prep., see also Sect. 1 above), we intend to use the diagnostic proposed by Rola et al. (1997) based on the equivalent widths of  $[OII]$  and  $H\beta$  lines to properly address the AGN contents of the cluster.

In addition to optical diagnostic methods, we can exploit the MIR AGN selection criterion proposed by Stern et al. (2005) which is based on the IRAC colours  $[3.6] - [4.5]$  and  $[5.8] - [8.0]$ . This diagnostic is based on the fact that the MIR colours of SF galaxies are mainly caused by the different contributions



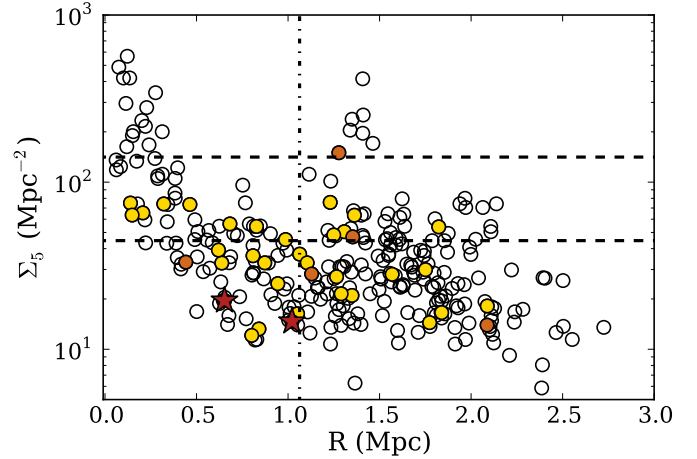
**Fig. 6.** AGN-SF distinction diagnostic based on IRAC [3.6]–[4.5] and [5.8]–[8.0] colours. Filled and open symbols represent FIR-detected and undetected sources. Stars are putative AGNs according to Stern et al. (2005), while circles are SF galaxies. The red square marks the only FIR emitter within the AGN region according to the Donley et al. (2012) criterion. Note that magnitudes are reported in the Vega system.

from polycyclic aromatic hydrocarbons (PAHs), while those of AGNs are dominated by a power-law continuum up to  $\lambda \sim 5 \mu\text{m}$ . As a result, the [3.6]–[4.5] colour is systematically higher while the [5.8]–[8.0] has a quite confined range. At most redshifts, the locus of AGNs is very clearly separated from that of SF galaxies. This diagnostic is more reliable for broad-line AGNs (BLAGN;  $\sim 90\%$  accuracy) than for narrow-line AGNs (NLAGN;  $\sim 40\%$ ), but overall provides a reliable separation of AGNs from SF galaxies (and also for galactic stars), with 80% completeness and less than 20% contamination. The selection criterion proposed by Donley et al. (2012) is based on the same principles, but applies more stringent limits to avoid the contamination from SF galaxies when selecting the AGN population, at the cost of being highly incomplete at low AGN luminosities (less than 20% at  $\log L_x(\text{erg s}^{-1}) < 43$ ). We applied these diagnostics to our sample of cluster-candidate MIR-emitters as shown in Fig. 6. Of a total of 24 FIR emitters detected in the four IRAC channels, two objects fall within the Stern AGN region, and only one of them fulfils the Donley criterion. Given the very small numbers involved, the derived fractions of putative AGN should be taken with caution. They range from 10% (considering the Stern criterion with 80% completeness) to 20% (applying the Donley limits assuming 20% completeness). These fractions are similar to that obtained in Pérez-Martínez et al. (2012) and Lemaux et al. (2010). On the other hand, remarkably, none of the individual X-ray point sources from Ulmer et al. (2009) have a significant probability of being cluster members, meaning that the MIR-selected AGNs do not show significant X-ray emission. We have highlighted the putative AGNs wherever appropriate, without removing them from the cluster SF sample because, on the one hand, their number is too small to have an impact on the statistical results, and on the other hand, it is very likely that a large portion of the FIR emission of these sources comes from SF activity.

## 5. Mapping the star-formation activity

### 5.1. Local density

To study the environmental dependence of the star formation activity, we use the nearest-neighbour density to characterise the



**Fig. 7.** Local density as a function of the cluster-centric radius. Open circles represent cluster members not detected in the FIR, yellow and orange filled circles represent MIPS-only and *Herschel*-detected SF galaxies, respectively. The vertical dash-dotted line at 1.05 Mpc shows the virial radius. The horizontal dashed lines at  $\log \Sigma = 1.65$  and 2.15 indicate the limits between the low-, intermediate-, and high-density environments. The red stars are the AGN candidates.

environment (Tanaka et al. 2005). We defined a local density radius  $R_L$  as the projected distance to the fifth nearest galaxy. Then, the local density was derived as  $\Sigma_5 = 6/\pi R_L^2$ , in  $\text{Mpc}^{-2}$ . In this calculation, we considered the full sample of 292 cluster member galaxies.

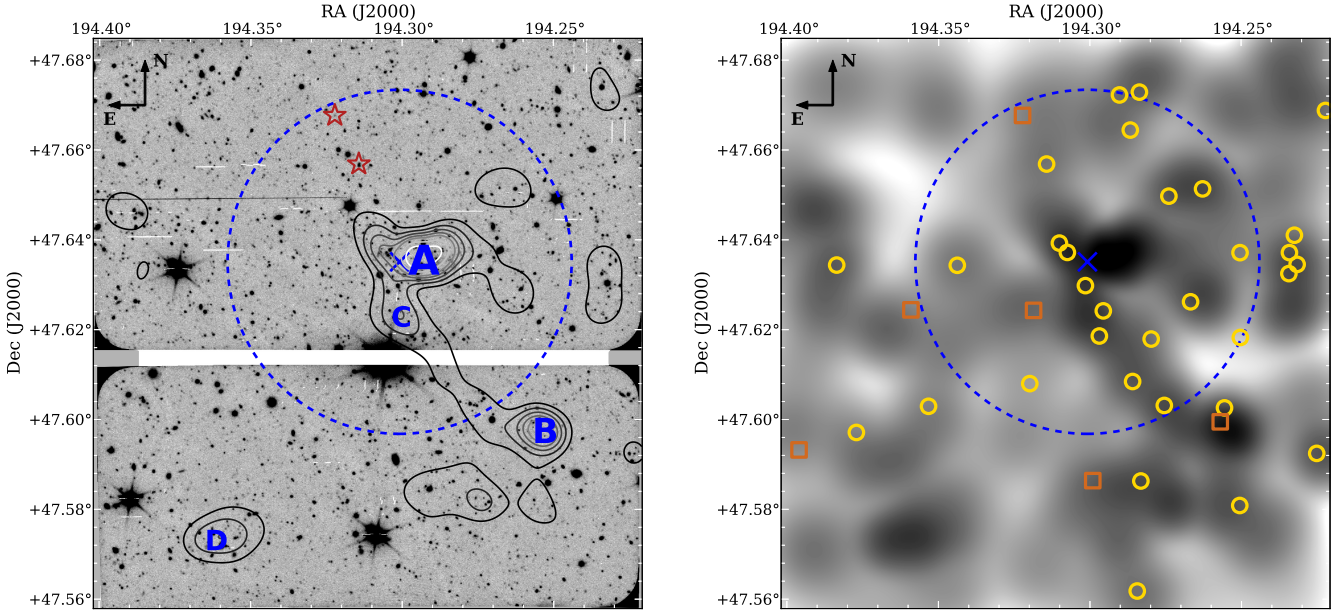
Following Koyama et al. (2008, hereafter KO08), we considered three environmental bins. These authors defined the environmental regions considering the medium-density environment as a relative narrow range of local density where the optical colour distribution starts to change dramatically. The environments considered in KO08 are low-density ( $\log \Sigma_5 < 1.65$ ), intermediate-density ( $1.65 \leq \log \Sigma_5 < 2.15$ ) and high-density ( $\log \Sigma_5 \geq 2.15$ ) regions. Since these definitions are arbitrary, we estimated its variation due to the modification of the density regions to study any property as a function of the local density, to ensure that the selected density regions do not condition our environmental dependence analysis. We changed the limits between regions within a Gaussian distribution centred on the KO08 limits definition, with a maximum variation of one sigma (fixed to 50% the definition value). Thus, for each studied property our average resulting value in each density environment does not change with the region definition.

In Fig. 7 we compare the local density with the clustercentric radius to determine the most appropriate parameter for studying the effect of the environment. The local density peaks not only at the centre but also around and beyond the virial radius show the high-density regions outside the cluster centre. Hence, we found that the local density is the most suitable parameter to account for the environment of RX J1257.

### 5.2. Density map and structures

To study the spatial density distribution of the cluster, we built a density map by applying an adaptive Gaussian kernel to smooth the cluster-member position distribution (Pisani 1996). To properly describe the cluster spatial distribution, we defined the cluster structures as the regions with densities detected above the  $4\sigma$  level with respect to the background density fluctuation





**Fig. 8.** *Left:* cluster structures on the  $r'$ -band OSIRIS/GTC image. The contours show the local density distribution of the cluster galaxies at 2, 3, 4, 5, 6, 8, and 10 times the background density noise, and the letters indicate the locus of the four structures detected above the  $4\sigma$  level with their size proportionally to the detection limit. The red stars show the AGN-candidate positions. *Right:* density map and spatial distribution of the FIR cluster members. Open yellow circles indicate the MIPS-only emitters and open orange squares represent *Herschel*-detected sources. The blue cross and dashed blue circle represent the centre and the virial radius of the cluster.

**Table 2.** Cluster structures with densities detected above the  $4\sigma$  level.

ID	RA (J2000)	Dec (J2000)	Detection	Pr. Distance (Mpc) <sup>a</sup>
A	12:57:10.30	+47:38:08.232	$10\sigma$	0.149
B	12:57:00.89	+47:35:51.360	$6\sigma$	1.364
C	12:57:12.19	+47:37:22.656	$4\sigma$	0.338
D	12:57:26.88	+47:34:23.520	$4\sigma$	2.063

**Notes.** <sup>(a)</sup> Measured relative to the nominal central position of the cluster (RA = 12:57:12.2, Dec = +47:38:06.5).

(see Table 2 and letters in the left panel of Fig. 8). These structures are found to remain the same throughout the Monte Carlo simulations performed in Sect. 3.2. Moreover, these overdensities are kept invariable when the density maps are constructed from a subsample complete in stellar mass.

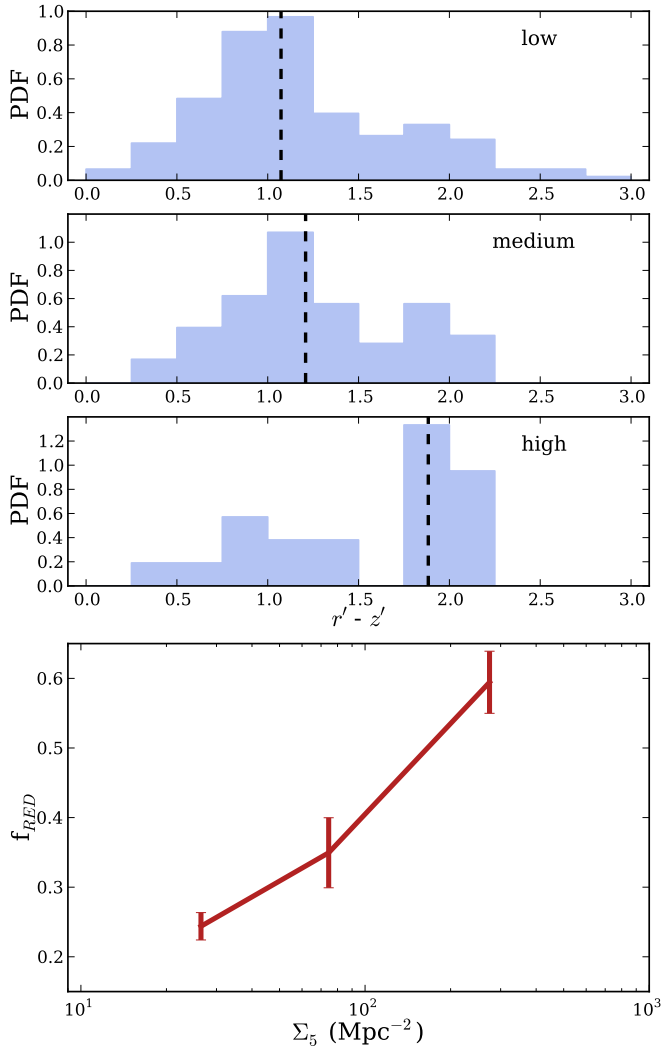
In Fig. 8 the density map is shown in two ways: the left panel represents the density contours across the  $r'$ -band image and the right panel shows the FIR-emitter positions on the density map. Near the nominal cluster centre, an elongated structure (A) is almost aligned in the E-W direction. Within this structure, galaxies detected in MIPS  $24\mu\text{m}$ -only appear in the NE part, suggesting that this elongation is a younger group in the process of assembling with the central region. Few overdensities, with FIR detected galaxies, are present around and beyond the virial radius in the EW direction and, especially, in a filament-like structure in the SW direction. This filament-like structure, shown in the left panel of Fig. 8 with contours, includes the overdensities B and C, and the NE part of the structure A. The right panel of Fig. 8 shows that this filamentary structure is reproduced by the positions of the FIR emitters, making this structure the area of highest star formation. In contrast to region A, which shows the highest local density (detected at the  $10\sigma$  level), the two densest structures (B and C) were not reported by Ulmer et al. (2009), probably because they were hidden by a mask in

the focal plane. The FIR emitters in the densest regions and the filamentary distribution of the clusters structures suggest that RX J1257 is a cluster in the process of formation, as has previously been pointed out by Ulmer et al. (2009).

### 5.3. Colour–density relation

Figure 9 shows the  $r' - z'$  colour of individual cluster member galaxies as a function of the local density bins. We observe an increment of the average colour with density, that is galaxies are redder towards denser environments, as can be seen from the black dashed line that represents the median in each environment, especially towards the high-density environment. These values were estimated as the median of the distribution of median colour values obtained by changing the limits between the originally defined environments, as explained in Sect. 5.1. This behaviour is observed for all cluster members (quiescent and SF galaxies) and for the FIR-emitter sample. This colour increment translates into an outstanding increase of the fraction of red galaxies relative to blue galaxies, as observed in the bottom panel of Fig. 9: the fraction raises from  $\sim 0.2$  at low-density to  $\sim 0.6$  at high-density environments, reflecting the well-known morphology-density relation. The fraction of red galaxies was estimated as the median of the fraction distribution ( $f_{\text{RED}} = n_{\text{RED}}/n_{\text{ALL}}$ ) calculated by varying the limits between density regions. Error bars were computed with the standard deviation of the distribution of fractions.

In analysing the SFR dependence on the local density, we considered different categories, namely low- and high-mass galaxies and optically red and blue objects. These categories are not independent, as seen in Fig. 10: red-sequence galaxies are generally found in the high-mass category, while blue cloud galaxies fall typically within the low-mass class. We decided to perform the analysis based on the high/low mass division and not red/blue galaxies to avoid biasing the sample with the  $z'$  magnitude limit criterion used to define the red-sequence galaxies. The

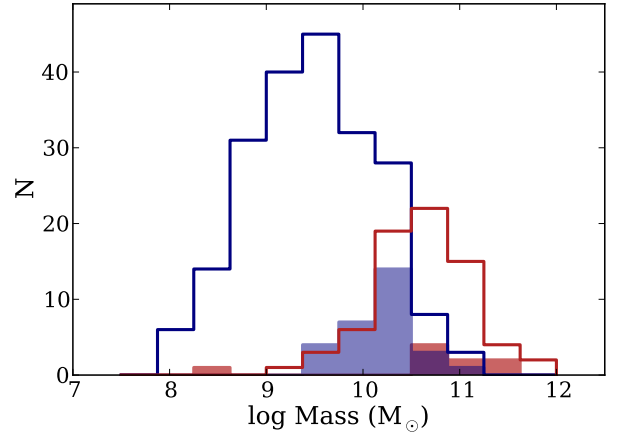


**Fig. 9.** (top) Normalised  $r' - z'$  colour distributions in each environment: low-, medium-, and high-density regions. The horizontal dashed lines indicate the median value of the  $r' - z'$  colour in each panel. (bottom) The fraction of red galaxies. Error bars show the standard deviation of the distribution of fractions of red galaxies in each density environment.

constraint imposed to define the red sequence additionally limit the sample and reduce the significance of the statistics. Although the observed trend indicates that massive galaxies tend to be red, the translation of the results obtained for high/low mass objects to red/blue ones can not be immediate and should be made with caution.

#### 5.4. Dependence of the star formation activity with environment

In Fig. 11, we plot the SFR and the sSFR of FIR emitters as a function of local density and stellar mass. The average SFR and sSFR were computed as the median of the distribution of median values obtained in each density bin by varying the boundaries of the regions, as explained in Sect. 5.1. Even with the strong variation of the region limits, we found that the median SFR and sSFR values are almost independent of the environment definition (as illustrated in Fig. 11), the standard deviations of the median SFR and sSFR distributions are used as error bars for these average values. Due to the lack of FIR emitters in the high



**Fig. 10.** Histograms of stellar mass distributions. Blue and red colours indicate distributions of galaxies belonging to the blue cloud and the red sequence, respectively, as defined in Sect. 4.1. Filled and open histograms show FIR-detected and undetected galaxies, respectively.

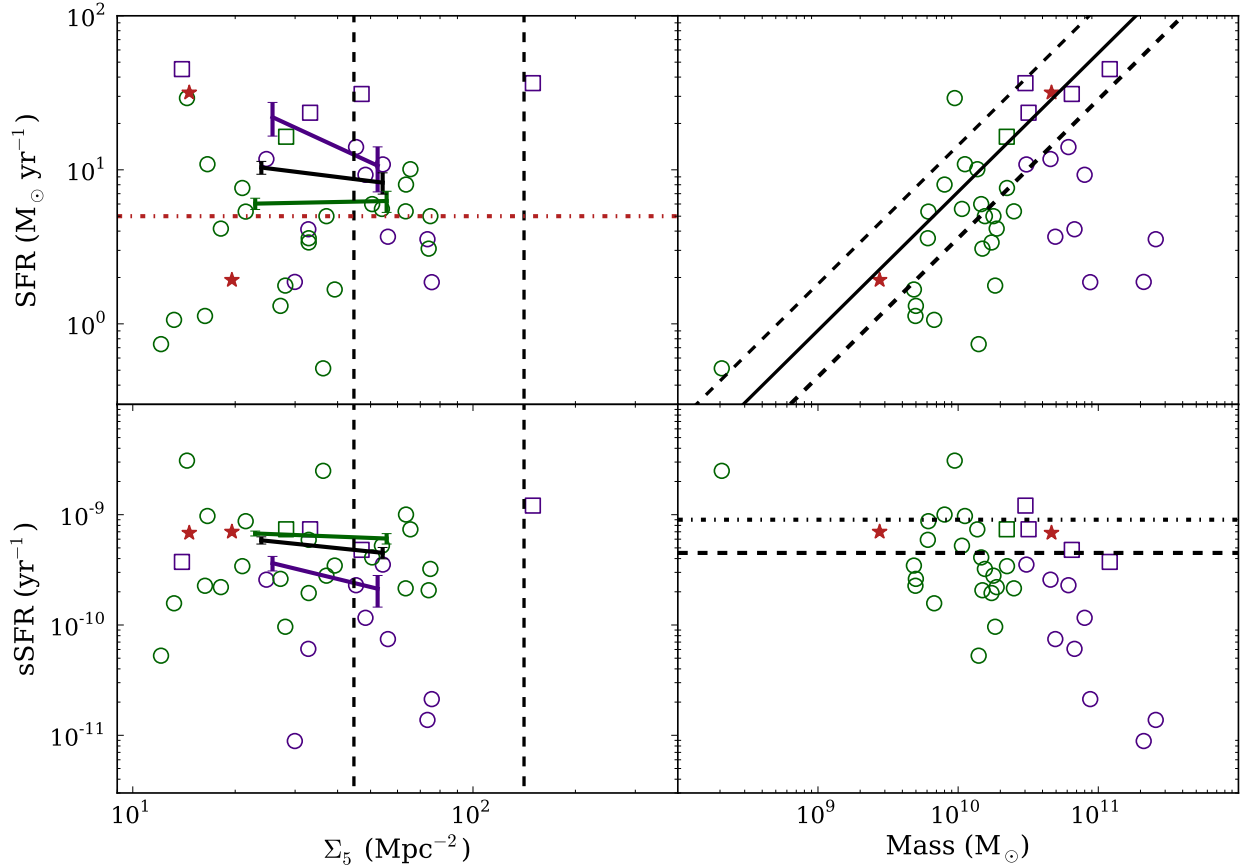
density environment we did not include the average value for this region.

To separate the environment from the mass effect, we divided the sample of FIR emitters into low-mass ( $M_\star < 2.5 \times 10^{10}$ ) and high-mass ( $M_\star \geq 2.5 \times 10^{10}$ ) galaxies. This boundary is the characteristic mass at which the galaxy population changes from actively star-forming at lower stellar mass to typically quiescent at higher masses in the local Universe (Kauffmann et al. 2003). Despite the small number statistics of FIR emitters in each density bin, we see no significant environmental trends. Our FIR-emitter sample is highly biased towards high SFR galaxies, therefore the average value is not the best indicator for observing the environmental dependence of the star formation activity. We expect an environmental trend to be evident with a larger and more sensitive sample of SF galaxies.

The analysis of the sSFR-density relation in two stellar mass bins implies a selection in sSFR due to the anticorrelation between the sSFR and the galaxy stellar mass (see right bottom panel of Fig. 11) (Elbaz et al. 2007; Popesso et al. 2011). The mean relation slightly anticorrelates with local density, following the observed trend with the stellar mass: low-mass SF galaxies are scarce in highest-density environments and dominate the high sSFR values in the low-density ones, while high-mass systems present a low sSFR and are the predominant SF galaxies observed in the highest-density environments.

For each of the three environments, we derived the fraction of FIR emitters. For this calculation we used the full sample of 38 FIR emitters and the sample of 292 cluster member galaxies. Again, the fraction of FIR emitters was estimated as the median of the distribution of fractions ( $f_{\text{FIR}} = n_{\text{FIR}}/n_{\text{ALL}}$ ) calculated by varying the boundaries between density regions, as explained in Sect. 5.1. Error bars represent the Poisson statistics errors associated to the fractions. As can be seen in Fig. 12, we found that the fraction of FIR emitters increases at the medium density environment and rapidly decreases towards the high-density region. This behaviour is reproduced for both the low- and high-mass samples, showing no significant difference in the effect of the cluster environment as a function of the galaxy stellar mass. We found the same behaviour in the optically red and blue samples.

As explained in Sect. 4.2, extinction is one of the parameters we can obtain through the SED-fitting technique with *LePhare*.



**Fig. 11.** SFR and sSFR of the FIR emitters as a function of the local density and the stellar mass. Open circles and open squares represent MIPS-only and *Herschel*-detected cluster members, respectively. Violet symbols show high-mass ( $M_{\star} \geq 2.5 \times 10^{10}$ ) galaxies, green symbols show low-mass ( $M_{\star} < 2.5 \times 10^{10}$ ) galaxies. In the *left panels*, we indicate the median values of the low-mass, the high-mass, and the full sample in each environment with green, violet, and black lines, respectively. The error bars are computed as the standard deviation of the median values distribution. The horizontal dot-dashed red line indicates the completeness limit of our FIR-emitter sample. The vertical dashed lines at  $\log \Sigma_5 = 1.65$  and  $2.15$  separate the low-, intermediate-, and high-density environments as defined in KO08. The average number of FIR-undetected galaxies is 190, 79, and 24 in the low-, intermediate-, and high-density bins, respectively. In the *upper right panel*, the solid line indicates the SFR- $M_{\star}$  correlation from [Elbaz et al. \(2007\)](#), and the dashed lines show the 68% dispersion. In the *lower right panel*, the dashed line corresponds to the relation of [Elbaz et al. \(2011\)](#) for the main-sequence galaxies at the redshift of the cluster, and the dashed-dotted line indicates the lower limit for the starburst region. The red stars in each panel show the AGN candidates.

However, the reduced wavelength range and the exponentially declining star formation histories used for the BC03 templates limit the reliability of these extinctions. A better-suited tracer of the dust attenuation is the ratio between the total IR and UV luminosities, which can be calibrated with [Buat et al. \(2005\)](#). Figure 13 shows the dust attenuation estimated with this tracer for the low- and high-mass FIR-emitter samples. We observed that the distribution of high-mass galaxies is dustier. This difference was confirmed by a Kolmogorov-Smirnov (KS) test, since the statistics gives a probability below 4% that the two distributions are drawn from the same parent population. The outcome of this analysis suggests that the high-mass SF galaxies are more dust-extincted than the low-mass sample. Equivalently, we have found the same result by comparing the optically red and blue SF galaxies, which indicates that the optical red colour of some FIR emitters may be due to dust attenuation.

## 6. Discussion

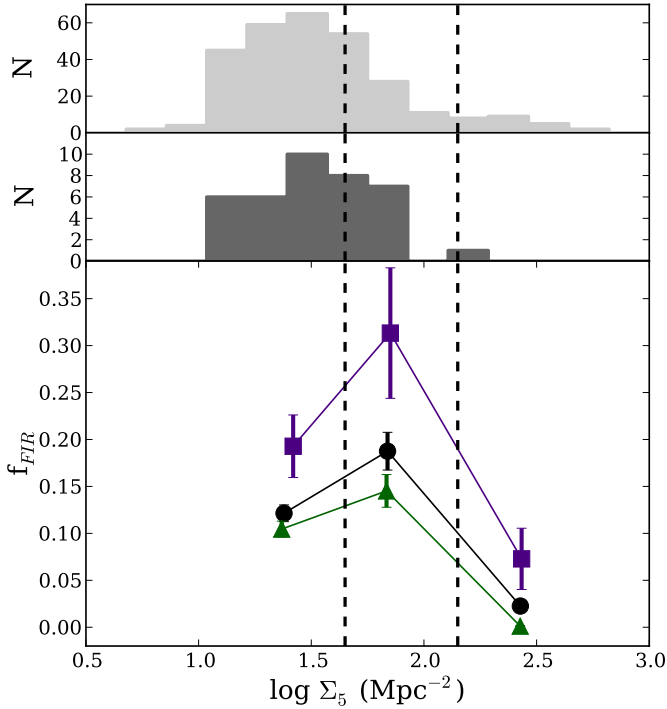
### 6.1. Spatial distribution of FIR galaxies

The RX J1257 cluster is formed by many projected substructures that are apparently in the process of merging. As detailed in Table 2, we have found four structures with a local density

above  $4\sigma$  of the background level. The main structure (A) is very elongated in the W-NE direction: the central and western parts are characterised by the lack of FIR emitters, that is the SF in this region is completely quenched at our detection threshold; and the region towards the NE shows several FIR galaxies, which indicates that it is becoming the region with ongoing star formation.

This scenario suggests an advanced infall-stage of the western region onto the high-density central structure, while the north-eastern region is experiencing a recent SF episode. This picture of a series of structures merging with an already evolved cluster does agree with the overabundance of red-sequence galaxies observed in and nearby the cluster central structure. The RX J1257 cluster collapse has been reported by [Ulmer et al. \(2009\)](#) based on: (i) a bimodal distribution of the X-ray emission in the galaxy population; (ii) the number of MIR-detected spectroscopically confirmed cluster members; (iii) the existence of substructures; and (iv) the high  $kT$  compared to the  $L_{X,\text{bol}} - kT$  relation. We here suggested that the RX J1257 cluster is currently in the process of formation. Nevertheless, while [Ulmer et al. \(2009\)](#) found MIPS cluster members associated with the central-western region, we did not spatially match those MIPS sources with spectroscopic cluster galaxies,





**Fig. 12.** Fractions of FIR emitters for low-mass galaxies (green triangles), high-mass galaxies (violet squares), and the full sample (black circles) as a function of the environment. Error bars are computed with Poisson statistics. The histograms in the upper panels represent the distribution of  $\Sigma_5$  for the cluster members (*top*) and for the FIR emitters (*central*).

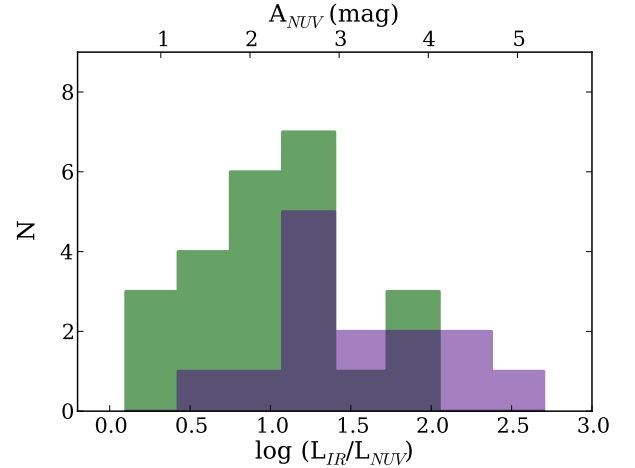
but with photometric foreground or background objects and, moreover, we found MIPS-detected galaxies in the eastern group that match photometric cluster candidates.

Another interesting feature of the projected spatial distribution is the overdensities alignment: B, C, and the north-eastern part of the A subgroups are aligned in the SW-NE direction. This spatial appearance looks more like a filament than a virialised symmetric structure, supporting the approach of studying the FIR emitters relative to their local density instead of their distance to the cluster centre. The filamentary structure formed by these overdensities is also reflected in the spatial distribution of the FIR emitters, as shown in the left panel of Fig. 8, highlighting the medium density regions (filaments/group) as the preferred environment for the star formation activity.

Previous similar studies in  $z \sim 0.8$  clusters have been performed by Marcillac et al. (2007; RX J0152 at  $z = 0.83$ ), Bai et al. (2007; MS1054 at  $z = 0.83$ ), and KO08 (RX J1716 at  $z = 0.81$ ). These works showed that SF cluster galaxies detected in the IR are distributed avoiding high-density regions and are detected especially in group/filament environments. Our work confirmed that FIR galaxies are located outside the cluster central region (A) and are preferentially distributed in intermediate densities.

## 6.2. Environmental dependence of the star formation activity

As shown in Fig. 11, neither the median SFR nor the median sSFR of FIR-detected SF galaxies show a strong dependence on the cluster environment, at least in the low- to intermediate-density media. Only when the sample is divided into low- and high-mass galaxies, a mild decrease of the median SFR of high mass objects is observed, although this is not very significant



**Fig. 13.** Extinction distributions for the low (green) and high (violet) mass FIR emitters samples, estimated with the ratio between the total IR and UV luminosities. The top horizontal axis was calculated by using the calibration of Buat et al. (2005).

compared with the error bars. On the other hand, the SF is so suppressed for high-density regions that no statistical analysis is possible.

More interesting is the analysis of the dependence of the fraction of FIR-detected SF galaxies on the environment, as shown in Sect. 5.4 and depicted in Fig. 12. A huge increase in the fraction of FIR emitters is observed at intermediate densities while it falls to almost zero towards high-density environments, which shows that the cluster intermediate-density regions favour the star formation activity; this confirms previous results. At lower redshift, Biviano et al. (2011) found that the filament region in Abell 1763 hosts the highest fraction of IR emitters, but no environmental trend with their intrinsic properties was observed, that is, these authors obtained a similar sSFR vs.  $M_*$  relation and SED galaxy classes for the different cluster environments. The RX J1257 cluster shows a similar behaviour, although in this case the total SFR per number galaxy in each environment shows such a dispersion that we cannot claim that the intermediate density region contains the highest average SFR. The fact that we observed an environmental dependence of the fraction of FIR emitters, but not of their average SFR/sSFR, could be due to two main causes. On the one hand, the small number of objects available for tracing the transition region between the low- and intermediate-density environments. We roughly estimated the characteristic distance between these environments as  $\langle d \rangle = 0.2$  Mpc; considering the mean density of SF galaxies, we obtained that there are only approximately three sources to trace this transition region. Moreover, these sources are highly biased to high SFRs. On the other hand, as suggested by previous works (e.g. Biviano et al. 2011), the quenching/enhancement of the star formation in clusters could be a fast process. For a typical galaxy velocity of  $600 \text{ km s}^{-1}$  (Ulmer et al. 2009), the crossing time of the rough characteristic distance between the low- and intermediate-density environments is  $\sim 0.3$  Gyr. Because we failed to detect any environmental dependence of the average SFR/sSFR, this time can be considered an upper limit for the duration of the physical mechanisms involved in the transformation of the galaxies in the transition region. Therefore, we need more sensitive data to assemble a detailed picture of the dependence of the SFR on the environment and to constrain the possible physical processes.

The increase in the fraction of SF galaxies towards intermediate-density regions is found in both low- and high-mass galaxies, and an identical behaviour is observed in blue and red galaxies. The nature of the optically red SF galaxies has been discussed by KO08. The authors interpreted the red colours of some of their  $15\mu\text{m}$ -emitting galaxies as due to dust reddening. We have investigated this possibility by comparing the distribution of extinction (as traced by the ratio  $L_{\text{IR}}/L_{\text{NUV}}$ ) in blue and red SF objects (see the last part of Sect. 5.4). Since the only reliable estimate of the dust obscuration is derived through the total IR luminosity, we cannot compare the dust content of SF and quiescent galaxies. As a result of the comparison between red and blue SF galaxies, we found that it is very likely that the two distributions of dust attenuation are different. This finding supports the scenario that describes the optically red SF galaxies as dustier than the blue ones.

### 6.3. Global evolution

We characterised the global SF properties of RX J1257 in terms of the mass-normalized total SFR,  $\Sigma\text{SFR}/M_{\text{Cl}}$ , to compare them with previous studies in the literature. Following Koyama et al. (2010), we estimated the  $\Sigma\text{SFR}$  using the cluster member galaxies within half the  $R_{200}$  and divided it by  $M_{200}$  to derive  $\Sigma\text{SFR}/M_{\text{Cl}}$ . The radius and mass were calculated based on a velocity dispersion of  $600\text{ km s}^{-1}$  (Ulmer et al. 2009), and following Eqs. (2) and (3),

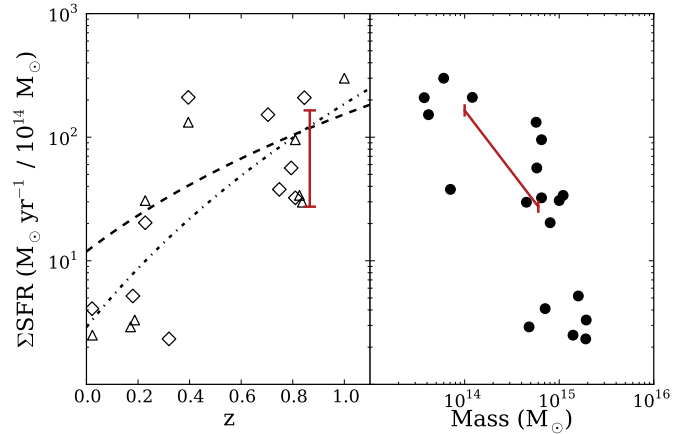
$$R_{200} = 2.47 \frac{\sigma}{1000\text{ km s}^{-1}} \frac{1}{\sqrt{\Omega_{\Lambda 0} + \Omega_{m 0} (1+z)^3}} \text{Mpc} \quad (2)$$

$$M_{200} = 1.71 \times 10^{15} \left( \frac{\sigma}{1000\text{ km s}^{-1}} \right)^3 \frac{1}{\sqrt{\Omega_{\Lambda 0} + \Omega_{m 0} (1+z)^3}} M_{\odot}. \quad (3)$$

We also considered the cluster mass calculated by Ulmer et al. (2009) with X-ray to estimate a range for the mass-normalized total SFR, obtaining  $\Sigma\text{SFR}/M_{\text{Cl}} = [117, 704] M_{\odot} \text{ yr}^{-1} / 10^{14} M_{\odot}$ . In Fig. 14 we include RX J1257 in the sample compiled by Koyama et al. (2010; see references therein). We plot the cluster total SFR based on both H $\alpha$  intensity and MIR data. The mass-normalised total SFR increases towards higher redshift clusters and, although the scatter is large, this evolutionary trend can be fitted with  $\propto(1+z)^6$ . When we fitted the power index as a free parameter, we obtained the best power index to be 4.4, still higher than the decline since  $z \sim 1$  found in field studies  $\propto(1+z)^3$ . Therefore, although a larger sample of clusters is needed, the cluster evolution supports a scenario in which the galaxy evolution in clusters is faster than that in the general field since  $z \sim 1$ . We also confirm previous signs indicating that  $\Sigma\text{SFR}/M_{\text{Cl}}$  is lower for systems of higher mass (Finn et al. 2005; Bai et al. 2007; Koyama et al. 2010; Popesso et al. 2012), as shown in the range in the right panel of Fig. 14.

## 7. Summary and conclusions

We have performed a multi-wavelength optical and infrared study of RX J1257.2+4738, a massive cluster at  $z = 0.866$ . New OSIRIS/GTC and *Herschel* imaging data, along with ancillary data, have enabled us to perform SED-fitting and Monte Carlo simulations to build a catalogue of robust cluster members. This catalogue contains 292 cluster galaxies, 21 of which are spectroscopically confirmed cluster members and 271 are trustworthy



**Fig. 14.** Total cluster SFR per unit cluster mass as a function of redshift (left) and as a function of cluster mass (right). Open diamonds and triangles show the integrated total SFR estimated with H $\alpha$  and IR data, respectively, compiled by Koyama et al. (2010). The red line indicates the cluster mass and, consequently, the  $\Sigma\text{SFR}/M_{\text{Cl}}$  range of RX J1257. The dashed line shows the best fit to  $\Sigma\text{SFR}/M_{\text{Cl}} \sim (1+z)^\alpha$ , and the dot-dashed line shows the best fit setting the power index to  $\alpha = 6$ .

photometric candidates (38 of them are FIR-detected). The identification of a large number of cluster galaxies has allowed us to investigate galaxy properties as a function of the cluster environment. Our main results are summarised below.

1. We calculated  $L_{\text{IR}}$  luminosities for each of the 38 FIR-detected galaxies, obtaining a sample that is complete in IR luminosity down to  $L_{\text{IR}} = 5.2 \times 10^{10} L_{\odot}$ , i.e.  $\text{SFR} = 5 M_{\odot} \text{ yr}^{-1}$ . Twelve galaxies of this sample are in the LIRG range. Most of the FIR emitters fall into the main-sequence regime.
2. We estimated that around 8% of FIR emitters are AGN candidates, using a selection criterion based on the IRAC colours, and we confirm that none of them have X-ray emission. The resulting two candidates are located in the low-density regime, both are MIPS-detected and one has *Herschel* detected emission.
3. We found four structures in the cluster density map with a local density above four times the background density fluctuation. The filament-like appearance of some overdensities and the spatial distribution of the FIR emitters within them suggest that RX J1257 is still in the process of formation.
4. We analysed the dependence of the star formation activity with the environment in three density regions (low-, intermediate-, and high-densities) and two mass samples (low- and high-mass galaxies). The average value of the SFR and the sSFR was shown to be roughly independent of the environment, although we should bear in mind that the data are highly biased to high SFRs. On the other hand, the fraction of SF galaxies was found to change with environment, showing the same behaviour for low- and high-mass samples. We observed that the fraction of low-mass SF galaxies increases from low- to intermediate-density environments and falls almost to zero towards the densest regions. Both the spatial distribution and the fraction of FIR emitters lead us to consider the intermediate-density cluster environment as the appropriate region to observe the enhancement of star formation activity. The lack of an environmental dependence of the average  $\text{SFR}/\text{sSFR}$  of the FIR emitters against the dependence of their fraction suggests that the physical mechanism

**Table 3.** Properties of the cluster FIR emitters.

ID	RA (J2000)	Dec (J2000)	$z$	Flag <sup>a</sup>	log Age (yr)	log $M_*$ ( $M_\odot$ )	log $L_{\text{IR}}$ ( $L_\odot$ )	$SFR$ ( $M_\odot \text{ yr}^{-1}$ )	$SSFR$ ( $\text{yr}^{-1}$ )	$E(B - V)$
g-00020	194.2251	47.5925	0.86 ± 0.14	G1	8.7 ± 0.8	10.0 ± 0.3	11.05 ± 0.08	10.9 ± 1.1	-9.0 ± 0.6	0.2
g-00123	194.2506	47.5809	0.95 ± 0.10	G1	8.7 ± 0.8	10.0 ± 0.3	10.76 ± 0.01	5.6 ± 0.1	-9.3 ± 0.5	0.1
g-00153	194.2556	47.6026	0.85 ± 0.00	SP	9.3 ± 0.3	10.9 ± 0.2	10.29 ± 0.13	1.9 ± 0.2	-10.7 ± 0.0	0.1
g-00226	194.3960	47.5932	0.82 ± 0.07	G2	8.3 ± 0.8	11.1 ± 0.3	11.67 ± 0.34	45.1 ± 14.8	-9.4 ± 0.4	0.4
g-00319	194.3771	47.5971	0.87 ± 0.05	G1	8.7 ± 0.7	10.0 ± 0.2	11.48 ± 0.05	29.2 ± 1.8	-8.5 ± 0.4	0.3
g-00427	194.2991	47.5864	0.87 ± 0.07	G1	8.7 ± 0.8	10.8 ± 0.3	11.51 ± 0.14	31.1 ± 5.6	-9.3 ± 0.6	0.4
g-00499	194.2844	47.5618	0.91 ± 0.12	G1	8.9 ± 0.8	10.3 ± 0.3	10.64 ± 0.01	4.2 ± 0.0	-9.7 ± 0.5	0.3
g-00505	194.2832	47.5863	0.81 ± 0.10	G1	8.5 ± 0.8	10.4 ± 0.3	10.75 ± 0.10	5.4 ± 0.7	-9.7 ± 0.4	0.4
g-00535	194.2754	47.6032	0.81 ± 0.11	G1	9.0 ± 0.5	10.8 ± 0.2	11.17 ± 0.08	14.0 ± 1.2	-9.6 ± 0.2	0.4
g-00588	194.3199	47.6080	0.90 ± 0.11	G1	8.4 ± 0.8	9.8 ± 0.3	10.04 ± 0.01	1.1 ± 0.0	-9.8 ± 0.3	0.3
g-00665	194.3533	47.6030	0.92 ± 0.14	G2	8.5 ± 0.8	10.3 ± 0.3	10.90 ± 0.01	7.6 ± 0.1	-9.5 ± 0.3	0.4
g-00795	194.2221	47.6688	0.88 ± 0.09	G1	9.7 ± 0.3	11.3 ± 0.2	10.29 ± 0.01	1.9 ± 0.0	-11.1 ± 0.4	0.0
g-00850	194.2315	47.6345	0.89 ± 0.08	G1	8.4 ± 0.7	10. ± 0.3	10.80 ± 0.01	6.0 ± 0.1	-9.4 ± 0.3	0.3
g-00859	194.2324	47.6410	0.87 ± 0.16	G2	8.4 ± 0.8	9.8 ± 0.3	10.75 ± 0.10	5.4 ± 0.5	-9.1 ± 0.4	0.4
g-00865	194.2343	47.6325	0.87 ± 0.08	G1	9.0 ± 0.8	10.9 ± 0.3	10.99 ± 0.10	9.3 ± 0.9	-9.9 ± 0.5	0.3
g-00876	194.2341	47.6372	0.91 ± 0.15	G1	8.6 ± 0.8	9.7 ± 0.3	10.13 ± 0.00	1.3 ± 0.0	-9.6 ± 0.3	0.2
g-00975	194.2503	47.6183	0.86 ± 0.14	G1	8.4 ± 0.7	9.7 ± 0.3	10.07 ± 0.13	1.1 ± 0.2	-9.6 ± 0.3	0.2
g-00980	194.2504	47.6372	0.87 ± 0.00	SP	9.0 ± 0.4	10.7 ± 0.1	11.09 ± 0.08	11.7 ± 1.0	-9.6 ± 0.2	0.3
g-01044	194.2628	47.6514	0.82 ± 0.11	G2	8.5 ± 0.8	10.5 ± 0.3	11.05 ± 0.08	10.8 ± 0.9	-9.5 ± 0.4	0.2
g-01245	194.3837	47.6344	0.91 ± 0.10	G1	9.3 ± 0.8	10.3 ± 0.3	10.27 ± 0.00	1.8 ± 0.0	-10.0 ± 0.6	0.3
g-01402	194.3101	47.6393	0.85 ± 0.09	G1	8.3 ± 0.8	10.1 ± 0.3	11.02 ± 0.08	10.1 ± 0.9	-9.1 ± 0.3	0.5
g-01419	194.3075	47.6372	0.92 ± 0.12	G2	8.6 ± 0.8	10.2 ± 0.3	10.72 ± 0.02	5.0 ± 0.1	-9.5 ± 0.4	0.2
g-01463	194.3015	47.6298	0.89 ± 0.15	G1	8.3 ± 0.7	9.9 ± 0.2	10.92 ± 0.01	8.0 ± 0.1	-9.0 ± 0.2	0.2
g-01495	194.2969	47.6186	0.86 ± 0.00	SP	9.6 ± 0.2	11.4 ± 0.2	10.57 ± 0.11	3.5 ± 0.4	-10.9 ± 0.3	0.0
g-01510	194.2956	47.6242	0.89 ± 0.15	G2	8.6 ± 0.8	10.2 ± 0.3	10.51 ± 0.01	3.1 ± 0.0	-9.7 ± 0.4	0.4
g-01555	194.2902	47.6723	0.91 ± 0.12	G1	8.3 ± 0.8	10.3 ± 0.3	10.72 ± 0.02	5.0 ± 0.1	-9.6 ± 0.3	0.5
g-01584	194.2866	47.6645	0.93 ± 0.11	G2	7.5 ± 0.8	9.8 ± 0.4	10.57 ± 0.01	3.6 ± 0.0	-9.2 ± 0.2	0.6
g-01600	194.2836	47.6729	0.89 ± 0.15	G1	8.5 ± 0.7	10.2 ± 0.3	10.55 ± 0.01	3.4 ± 0.0	-9.7 ± 0.3	0.3
g-01654	194.2739	47.6498	0.83 ± 0.07	G1	9.0 ± 0.3	10.8 ± 0.2	10.63 ± 0.11	4.1 ± 0.6	-10.2 ± 0.1	0.1
g-01702	194.2668	47.6262	0.86 ± 0.00	SP	9.0 ± 0.7	10.7 ± 0.3	10.58 ± 0.11	3.7 ± 0.4	-10.1 ± 0.4	0.4
g-01770	194.3591	47.6244	0.86 ± 0.12	G1	8.3 ± 0.5	10.3 ± 0.2	11.23 ± 0.33	16.4 ± 9.0	-9.1 ± 0.5	0.5
g-01773	194.3186	47.6243	0.83 ± 0.08	G1	8.5 ± 0.8	10.5 ± 0.3	11.39 ± 0.31	23.5 ± 8.4	-9.1 ± 0.5	0.5
g-01858	194.3438	47.6344	0.86 ± 0.00	SP	8.8 ± 0.8	10.1 ± 0.5	9.89 ± 0.13	0.7 ± 0.1	-10.3 ± 0.7	0.3
g-01883	194.3223	47.6677	0.98 ± 0.08	G1	8.8 ± 0.8	10.7 ± 0.3	11.52 ± 0.27	31.7 ± 7.6	-9.2 ± 0.4	0.6
g-00160	194.2570	47.5995	0.85 ± 0.00	SP	8.5 ± 0.8	10.5 ± 0.3	11.58 ± 0.37	36.5 ± 9.4	-8.9 ± 0.4	0.4
g-01391	194.3143	47.6569	0.86 ± 0.00	SP	7.0 ± 0.8	9.4 ± 0.3	10.30 ± 0.13	1.9 ± 0.3	-9.2 ± 0.0	0.6
g-01630	194.2798	47.6179	0.87 ± 0.00	SP	8.7 ± 0.7	9.7 ± 0.3	10.24 ± 0.13	1.7 ± 0.2	-9.5 ± 0.4	0.2

**Notes.** <sup>(a)</sup> Redshift flag: spectroscopic redshift (SP), photometric redshift fitted with a Gaussian function (G1), and photometric redshift fitted with a double Gaussian function (G2). See Sect. 3 for more details about the redshift estimation.

causing the variation of the star formation activity at intermediate densities could be a fast process.

- The analysis of the extinction distributions of the optically red and blue SF galaxies supports the assumption of the red SF galaxies as a dusty population. Nevertheless, to explore the origin of these optically red SF galaxies we need to separate the SED-fitting degeneration between extinction, age, and metallicity.
- The global SF properties of RX J1257 were characterised by estimating a range for the mass-normalised total SFR,  $\Sigma SFR/M_{\text{Cl}} = [117, 704] M_\odot \text{ yr}^{-1} / 10^{14} M_\odot$ . The values within the obtained range are consistent with the scenario in which the evolution of cluster galaxies is faster than the evolution of field galaxies since  $z \sim 1$ .

A thorough study of the properties of the RX J1257 cluster derived from optical emission lines ([O II], [O III], H $\beta$ ), namely star formation down to  $\sim 2 M_\odot \text{ yr}^{-1}$ , AGN activity and metallicity, along with a detailed morphological analysis will be presented in forthcoming papers.

**Acknowledgements.** We acknowledge the anonymous referee for helpful comments and suggestions that have greatly contributed to improve the manuscript. This research has been supported by the Spanish Ministry of Economy and Competitiveness (MINECO) under the grant AYA2011-29517-C03-01. We acknowledge support from the Faculty of the European Space Astronomy Centre (ESAC). Based on observations made with the Gran Telescopio Canarias (GTC), instaled in the Spanish Observatorio del Roque de los Muchachos of the Instituto de Astrofísica de Canarias, in the island of La Palma. Based on observations made with the *William Herschel* Telescope operated on the island of La Palma by the Isaac Newton Group in the Spanish Observatorio del Roque de los Muchachos of the Instituto de Astrofísica de Canarias. PACS has been developed by a consortium of institutes led by MPE (Germany) and including UVIE (Austria); KUL, CSL, IMEC (Belgium); CEA, OAMP (France); MPIA (Germany); IFSI, OAP/AOT, OAA/CAISMI, LENS, SISSA (Italy); IAC (Spain). This development has been supported by the funding agencies BMVIT (Austria), ESA-PRODEX (Belgium), CEA/CNES (France), DLR (Germany), ASI (Italy) and CICYT/MICINN (Spain). SPIRE has been developed by a consortium of institutes led by Cardiff Univ. (UK) and including: Univ. Lethbridge (Canada); NAOC (China); CEA, LAM (France); IFSI, Univ. Padua (Italy); IAC (Spain); Stockholm Observatory (Sweden); Imperial College London, RAL, UCL-MSSL, UKATC, Univ. Sussex (UK); and Caltech, JPL, NHSC, Univ. Colorado (USA). This development has been supported by national funding agencies: CSA (Canada); NAOC (China); CEA, CNES, CNRS (France); ASI (Italy); MCINN (Spain); SNSB (Sweden); STFC, UKSA (UK); and NASA (USA).



## References

- Acosta Pulido, J. A., Ballesteros, E., Barreto, M., et al. 2003, *The Newsletter of the Isaac Newton Group of Telescopes*, 7, 15
- Atlee, D. W., Martini, P., Assef, R. J., Kelson, D. D., & Mulchaey, J. S. 2011, *ApJ*, 729, 22
- Bai, L., Marcillac, D., Rieke, G. H., et al. 2007, *ApJ*, 664, 181
- Balogh, M. L., Morris, S. L., Yee, H. K. C., Carlberg, R. G., & Ellingson, E. 1999, *ApJ*, 527, 54
- Bell, E. F., Wolf, C., Meisenheimer, K., et al. 2004, *ApJ*, 608, 752
- Bertin, E., & Arnouts, S. 1996, *A&AS*, 117, 393
- Biviano, A., Fadda, D., Durret, F., Edwards, L. O. V., & Marleau, F. 2011, *A&A*, 532, A77
- Boselli, A., & Gavazzi, G. 2006, *PASP*, 118, 517
- Bower, R. G., Lucey, J. R., & Ellis, R. S. 1992, *MNRAS*, 254, 589
- Brinchmann, J., Charlot, S., White, S. D. M., et al. 2004, *MNRAS*, 351, 1151
- Bruzual, G., & Charlot, S. 2003, *MNRAS*, 344, 1000
- Buat, V., Iglesias-Páramo, J., Seibert, M., et al. 2005, *ApJ*, 619, L51
- Butcher, H., & Oemler, Jr., A. 1984, *ApJ*, 285, 426
- Calzetti, D., Armus, L., Bohlin, R. C., et al. 2000, *ApJ*, 533, 682
- Cepa, J., Aguiar, M., Bland-Hawthorn, J., et al. 2003, in *Rev. Mex. Astron. Astrofis. Conf. Ser.* 16, eds. J. M. Rodríguez Espinoza, F. Garzón López, & V. Melo Martín, 13
- Chabrier, G. 2003, *PASP*, 115, 763
- Chary, R., & Elbaz, D. 2001, *ApJ*, 556, 562
- Cid Fernandes, R., Stasińska, G., Schlickmann, M. S., et al. 2010, *MNRAS*, 403, 1036
- Coia, D., Metcalfe, L., McBreen, B., et al. 2005, *A&A*, 430, 59
- Daddi, E., Dickinson, M., Morrison, G., et al. 2007, *ApJ*, 670, 156
- de Ruiter, H. R., Arp, H. C., & Willis, A. G. 1977, *A&AS*, 28, 211
- Domínguez Sánchez, H., Mignoli, M., Pozzi, F., et al. 2012, *MNRAS*, 426, 330
- Donley, J. L., Koekemoer, A. M., Brusa, M., et al. 2012, *ApJ*, 748, 142
- Dressler, A. 1980, *ApJ*, 236, 351
- Dressler, A., Oemler, Jr., A., Couch, W. J., et al. 1997, *ApJ*, 490, 577
- Elbaz, D., Daddi, E., Le Borgne, D., et al. 2007, *A&A*, 468, 33
- Elbaz, D., Dickinson, M., Hwang, H. S., et al. 2011, *A&A*, 533, A119
- Erb, D. K., Steidel, C. C., Shapley, A. E., et al. 2006, *ApJ*, 647, 128
- Fazio, G. G., Hora, J. L., Allen, L. E., et al. 2004, *ApJS*, 154, 10
- Finn, R. A., Zaritsky, D., McCarthy, Jr., D. W., et al. 2005, *ApJ*, 630, 206
- Geach, J. E., Smail, I., Ellis, R. S., et al. 2006, *ApJ*, 649, 661
- Hayashi, M., Kodama, T., Koyama, Y., et al. 2010, *MNRAS*, 402, 1980
- Hook, I. M., Jørgensen, I., Allington-Smith, J. R., et al. 2004, *PASP*, 116, 425
- Ilbert, O., Arnouts, S., McCracken, H. J., et al. 2006, *A&A*, 457, 841
- Kauffmann, G., Heckman, T. M., White, S. D. M., et al. 2003, *MNRAS*, 341, 54
- Kennicutt, Jr., R. C. 1998, *ARA&A*, 36, 189
- Kodama, T., Balogh, M. L., Smail, I., Bower, R. G., & Nakata, F. 2004, *MNRAS*, 354, 1103
- Koyama, Y., Kodama, T., Shimasaku, K., et al. 2008, *MNRAS*, 391, 1758
- Koyama, Y., Kodama, T., Shimasaku, K., et al. 2010, *MNRAS*, 403, 1611
- Lemaux, B. C., Lubin, L. M., Shapley, A., et al. 2010, *ApJ*, 716, 970
- Makovoz, D., & Khan, I. 2005, in *Astronomical Data Analysis Software and Systems XIV*, eds. P. Shopbell, M. Britton, & R. Ebert, *ASP Conf. Ser.*, 347, 81
- Manchado, A., Barreto, M., Acosta-Pulido, J., et al. 2004, in *SPIE Conf. Ser.* 5492, eds. A. F. M. Moorwood, & M. Iye, 1094
- Marcillac, D., Rigby, J. R., Rieke, G. H., & Kelly, D. M. 2007, *ApJ*, 654, 825
- Martini, P., Kelson, D. D., Mulchaey, J. S., & Trager, S. C. 2002, *ApJ*, 576, L109
- Müller, T., Nielbock, M., Balog, Z., Klaas, U., & Vilenius, E. 2011, *PACS Photometer – Point-Source Flux Calibration*, *Tech. Rep.*, PACS ICC
- Noeske, K. G., Weiner, B. J., Faber, S. M., et al. 2007, *ApJ*, 660, L43
- Oke, J. B., & Gunn, J. E. 1983, *ApJ*, 266, 713
- Ott, S., Bakker, J., Brumfit, J., et al. 2006, in *Astronomical Data Analysis Software and Systems XV*, eds. C. Gabriel, C. Arviset, D. Ponz, & S. Enrique, *ASP Conf. Ser.* 351, 516
- Pérez-Martínez, R., Sánchez-Portal, M., Cepa, J., Pintos, I., & Pérez-García, A. 2012, in *Galaxy Clusters as Giant Cosmic Laboratories*, ed. J.-U. Ness, 43
- Pimblet, K. A., Smail, I., Edge, A. C., et al. 2001, *MNRAS*, 327, 588
- Pisani, A. 1996, *MNRAS*, 278, 697
- Popesso, P., Biviano, A., Romaniello, M., & Böhringer, H. 2007, *A&A*, 461, 411
- Popesso, P., Rodighiero, G., Saintonge, A., et al. 2011, *A&A*, 532, A145
- Popesso, P., Biviano, A., Rodighiero, G., et al. 2012, *A&A*, 537, A58
- Rieke, G. H., Young, E. T., Engelbracht, C. W., et al. 2004, *ApJS*, 154, 25
- Rola, C. S., Terlevich, E., & Terlevich, R. J. 1997, *MNRAS*, 289, 419
- Saintonge, A., Tran, K.-V. H., & Holden, B. P. 2008, *ApJ*, 685, L113
- Sánchez-Portal, M., Cepa, J., Pintos-Castro, I., et al. 2011, in *Highlights of Spanish Astrophysics VI*, eds. M. R. Zapatero Osorio, J. Gorgas, J. Maíz Apellániz, J. R. Pardo, & A. Gil de Paz, 353
- Smith, A. J., Wang, L., Oliver, S. J., et al. 2012, *MNRAS*, 419, 377
- Stern, D., Eisenhardt, P., Gorjian, V., et al. 2005, *ApJ*, 631, 163
- Tanaka, M., Kodama, T., Arimoto, N., et al. 2005, *MNRAS*, 362, 268
- Tran, K.-V. H., Papovich, C., Saintonge, A., et al. 2010, *ApJ*, 719, L126
- Treu, T., Ellis, R. S., Kneib, J., et al. 2003, *ApJ*, 591, 53
- Tully, R. B., Mould, J. R., & Aaronson, M. 1982, *ApJ*, 257, 527
- Ulmer, M. P., Adami, C., Lima Neto, G. B., et al. 2009, *A&A*, 503, 399
- Visvanathan, N., & Sandage, A. 1977, *ApJ*, 216, 214