

**MEASUREMENT OF INTRA-DISTRIBUTION DYNAMICS:
AN APPLICATION OF DIFFERENT APPROACHES
TO THE EUROPEAN REGIONS**

**ADOLFO MAZA
MARÍA HIERRO
JOSÉ VILLAVERDE**

FUNDACIÓN DE LAS CAJAS DE AHORROS
DOCUMENTO DE TRABAJO
Nº 376/2008

De conformidad con la base quinta de la convocatoria del Programa de Estímulo a la Investigación, este trabajo ha sido sometido a evaluación externa anónima de especialistas cualificados a fin de contrastar su nivel técnico.

La serie **DOCUMENTOS DE TRABAJO** incluye avances y resultados de investigaciones dentro de los programas de la Fundación de las Cajas de Ahorros.
Las opiniones son responsabilidad de los autores.

Measurement of intra-distribution dynamics: An application of different approaches to the European regions

Adolfo Maza^{*}, María Hierro and José Villaverde

*University of Cantabria, Department of Economics, Avda. de los Castros, s/n,
39005-Santander (Spain)*

Abstract: This paper examines the intra-distribution dynamics of per capita income between the European regions for the periods 1980-1993 and 1993-2005. To this end, three approaches are applied: the stochastic kernel approach, the highest conditional density approach and the estimation of mobility measures based on the Markov chain approach. One main conclusion and lesson have been obtained. The conclusion is that, although the distribution exhibits a great persistence, the degree of intra-distribution mobility has been much higher in the first period than in the second. The lesson is that, in dealing with intra-distribution dynamics, the use of different but complementary approaches is highly recommended.

Keywords: Intra-distribution dynamics; stochastic kernel; highest conditional density; mobility measures; European regions

^{*} *Corresponding author. Tel.: +34-942-201652; Fax: +34-942-201603*

E-mail address: mazaaj@unican.es.

Measurement of intra-distribution dynamics: An application of different approaches to the European regions

I. Introduction

In the last two or three decades there has been a huge amount of literature devoted to the study of the topic of per capita income (or productivity) convergence between economies; this is especially true for the case of the European regions, where the interest has been encouraged by the ongoing process of economic integration. As a result of this, it is virtually impossible to acknowledge all the researchers that have at some time dealt this issue. Then, just as a short reference to some of the most interesting works, it is worth mentioning the old but excellent survey edited by Armstrong and Vickerman (1995). More recently, the books edited by Cuadrado-Roura and Parellada (2002) and Fingleton (2003), and papers such as those of López-Bazo et al. (1999), Badinger et al. (2004), Magrini (2004), Miller and Genc (2005) or Meliciani (2006) are very good references.

Most of the articles analysing convergence processes between economies have applied the classical σ and β convergence approaches (see the seminal articles of Barro and Sala-i-Martin, 1991 and 1992). However, these approaches present several econometric problems and, in addition, fail to capture some potentially interesting features of the dynamics of the distribution under study. Specifically,

two important drawbacks arise from these approaches: they are informative neither about the shape of the distribution nor about its internal changes (Quah, 1996a and 1996b).

By using the European regions as a sort of laboratory, the aim of this paper is to apply different techniques in order to analyse the second drawback previously mentioned: the lack of knowledge about the intra-distribution dynamics. The so-called stochastic kernel approach is employed as a starting point. However, the main innovation of this paper lies in the application of two other techniques that complete the results obtained by this “traditional” one: the highest conditional density approach and the estimation of mobility measures based on the Markov chain approach.

On one hand, the highest conditional density approach is relatively new in the study of transition dynamics and, among other advantages, offers a much clearer graphical visualization than the stochastic kernel approach. On the other hand, the main advantage of the Markov chain approach is that mobility measures can be estimated, that is to say, we are able to quantify the intra-distribution mobility (Fields and Ok, 1999). With respect to this last approach, in this paper we propose a new mobility index based on the measure developed by Bartholomew (1973, 1996).

Thus, as we have just pointed out, the current paper applies these three alternative techniques for the study of intra-distribution dynamics to the European case. To

be precise, it examines the behaviour of relative per capita income (per capita GAV in PPS) of 196 European regions of the EU-15 for the periods 1980-1993 and 1993-2005¹. We have chosen these two periods because they are of similar length but with different rates of growth (see Table 1): the first one registered a relatively slow growth (an annual rate of 1.67% in the EU-15), while the second recorded a faster rate (2.21%). This allows us, on the one hand, to compare the results of each approach between periods and, on the other hand, to compare the results of the three different approaches for the same period.

The remainder of the paper is organised as follows. Section II refers to the stochastic kernel approach and its application to the relative per capita income distribution of the European regions. In Section III a modification of the kernel methodology, developed by Hyndman et al. (1996), is applied to the European case; this approach is based on the representation of the so-called highest density regions. Section IV, using the Markov chain approach, proposes an aggregated mobility index that provides a numeric support for the conclusions drawn from the previous approaches. Finally, Section V outlines the main conclusions.

II. Intra-distribution dynamics: the stochastic kernel approach

One of the techniques most commonly used in the analysis of the dynamics of a distribution involves the calculation of stochastic kernels (see Quah, 1997; and

¹ Data are drawn from the Cambridge Econometrics regional database. The entire list of European regions considered in this paper is shown in the Appendix.

Durlauf and Quah, 1999)². This approach is based on the estimation of the conditional density of a variable y (in our case, the relative per capita income in the final year) given a variable x (the relative per capita income in the initial year)³. Therefore, when, as in this paper, the stochastic kernel approach is applied to examine intra-distribution mobility between European regions in the periods 1980-1993 and 1993-2005, the probability of jumping from a per capita income level in 1980 (or 1993 in the second period) to any other per capita income level in 1993 (2005) is measured.

The results, using the Gaussian kernel with one common (constant) bandwidth calculated following Silverman's rule of thumb, are displayed in Figure⁴ 1. The X-axis represents the relative per capita income for the initial year of each period (variable x) and the Y-axis the relative per capita income for the final year (variable y), while the Z-axis measures the density (or conditioned probability) of each point on the X-Y plane. Thus, the lines parallel to the Y-axis show the probability of moving from a point considered on the X-axis to any other point on the Y-axis. The 2D figure on the right is the contour plot, obtained by taking a cut parallel to the X-Y plane for a particular density value; the lines of this contour plot connect points reflecting the same density on the three-dimensional graph. The interpretation of the kernel is easy, especially if we look at the contour graph.

² For more recent papers see, for instance, Maza and Villaverde (2004), Meliciani (2006), Ezcurra et al. (2007) and Villaverde and Maza (2007).

³ A formal kernel definition is given, for instance, in Laurini et al. (2005).

⁴ The kernel density estimator is usually calculated using the same bandwidth in the two directions (of variables) x and y .

If the lines of this graph are situated along the positive diagonal, the degree of mobility is low, this being lower the tighter the contour lines to the diagonal are: this means persistence in the distribution. If this is not so, there has been mobility, with more mobility the further the lines are from the diagonal.

With this in mind, Figure 1a seems to show that, generally speaking, the distribution of relative per capita income in the European regions has been characterized by persistence during the period 1980-1993. This result persists, and even more clearly⁵, in the period 1993-2005 (Figure 1b). However, the aforementioned figures also reveal, especially in the first period of analysis, that some regions have changed their relative positions; in other words, although there seems to be a high degree of persistence, there is also a certain degree of mobility (see the width of the contour lines).

As can be seen, the results obtained by using this technique, although very informative, are not absolutely conclusive. For this reason, the next two sections of this paper will try to clarify them.

III. Intra-distribution dynamics: the highest conditional density approach

In addition to the stochastic kernel approach, another technique to examine intra-distribution dynamics is that developed by Hyndman et al. (1996). These authors propose an alternative conditional density estimator with better statistical

⁵ As can be intuited from the different scale of the contour line graphics.

properties than the stochastic kernel estimators. This new approach is based on the estimation of the so-called stacked density plot and highest conditional density plot. The stacked density plot shows a number of densities plotted side by side in a perspective graph. The highest conditional density plot represents, on the other hand, the so-called highest density regions; without entering into details, the highest density region is defined ‘as the smallest region of the simple space containing a given probability’ (Hyndman et al., 1996, p. 327).

The results, employing optimal bandwidths in the two directions x and y ⁶, are shown in Figure 2: the stacked density plot on its left side and the highest conditional density plot on its right side. With reference to the stacked density plots, they allow us to see the changes in the shape of the relative per capita income distribution for a given per capita income value in the initial year. Therefore, these plots are more informative than the three-dimensional graph we obtained through the kernel approach, since it highlights the conditioning between relative per capita income levels (Arbia et al., 2006). According to the results, it seems that some European regions have greatly changed their initial per capita income levels, especially in the first period under analysis.

However, a more informative way to represent the changes occurring in a distribution is based on the highest conditional density plot, which, as we have mentioned, displays the highest density regions. Thus, each vertical strip on the

⁶ This technique, unlike the kernel approach, applies a different smooth parameter or bandwidth in each direction.

right hand side of Figure 2 represents the conditional density for a relative per capita income level in the initial year. In particular, this figure shows the highest density regions for a probability of 25, 50, 75 and 90% (as it passes from a darker to a less dark area). In addition, it illustrates, as a bullet (\bullet), the mode (value of relative per capita income in the final year where the density function takes on its maximum value) for each value in the initial year. Accordingly, the highest conditional density plot may offer additional insights into the conclusions obtained by means of the stochastic kernel approach.

With respect to the first period (right side of Figure 2a), the position of the modes indicates that, generally speaking, the poorest (richest) regions have improved (worsened) their relative per capita income levels; this is crystal-clear as the modes of the lower (higher) tail of the distribution are above (below) the main diagonal. On the other hand, if we observe the mass of probability (dark areas), we see that in both the lower and higher extremes of the distribution, the area representing a probability of 25 and 50% (and even 75 and 90% in some cases) does not cross the diagonal; this shows again the existence of certain mobility inside the per capita income distribution. Moreover, this approach also shows that mobility, given its direction, has favoured the convergence process between the European regions.

Relative to the second period under study, the right side of Figure 2b clearly shows that the mobility degree was lower (or the persistence higher) than in the first one. The modes are nearer to the diagonal and the dark areas representing a

probability of 25% cross it in most cases. Although it is true that this same circumstance also emerged from the stochastic kernel estimation, there is no doubt this is much more evident with this highest conditional density approach.

IV. Intra-distribution dynamics: the estimation of mobility measures based on a Markov chain approach

From a chronological point of view, the Markov chain approach was the first methodology used in modelling intra-distribution dynamics; although popularized by Quah (1996a) in the analysis of personal income distribution, this approach goes back, at least, to Prais (1955) and Blumen et al. (1955). This is due to the fact that Markov chains provide useful representations of dynamic processes through the estimation of the well-known transition matrices. Recent papers employing this methodology are, for instance, Le Gallo (2004) and Tortosa et al. (2005).

In order to give a simple definition of the concept of transition matrix⁷, it is necessary to consider that regions are classified into exhaustive and mutually exclusive states according to their relative per capita income at times t_0 and t_1 , $\mathbf{p}(t_0)$ and $\mathbf{p}(t_1)$ being the initial and final income distribution. The link between these distributions is given by $\mathbf{p}(t_1) = \mathbf{p}(t_0) \cdot \mathbf{P}$, where operator \mathbf{P} represents the transition probability matrix, with elements p_{ij} . This expression describes the

⁷ For a thorough definition of this concept see, for instance, Parzen (1962).

time evolution of $\mathbf{p}(t_0)$, by mapping $\mathbf{p}(t_0)$ onto $\mathbf{p}(t_1)$, that is, the changes in the income distribution between t_0 and t_1 . Thus, the interpretation of a transition matrix is really intuitive: each one of its cells p_{ij} indicates the probability of moving from a per capita income state i to a per capita income state j .

The main drawback of this approach is the arbitrariness when choosing the number and size of the states. Actually, the results critically depend on this choice and there is no any theoretical method to achieve an appropriate partition of the distribution⁸. However, the main advantage of this technique is that scalar summary indexes of mobility can be derived (Bibby, 1975; Shorrocks, 1978; Sommers and Conlisk, 1978; Bartholomew, 1973, 1996; Parker and Rougier, 2001). The two other approaches employed in this paper are very informative (the second even more than the first), but it is this one that really allows us to quantify the mobility degree.

Among the mobility measures based on a Markov chain, Bartholomew's (1996) measure has been one of the most extensively used in the literature on social mobility because of the introduction of distance into the quantification of mobility (see, for instance, Parker and Rougier, 2001; Ezcurra et al., 2006; Hierro, 2007). Additionally, and unlike other measures, such as that proposed by Shorrocks

⁸ When it comes to the choice of the number of states, the researcher should weigh up the clarity of the results and the number of observations in each state.

(1978), Bartholomew's general class of mobility measures is concerned with all transitions between states⁹.

In this paper, we propose an extension of Bartholomew's (1996) measure. Our mobility index is given by the expression:

$$d(\mathbf{P}) = \sum_i \sum_j \frac{1}{k_i} \cdot p_i \cdot p_{ij} \cdot d_{ij} \quad [1]$$

where p_i is the initial proportion of regions in i 's income state (that is, the size of each income state), p_{ij} denotes, as we have already indicated, the probability of moving from the relative per capita income state i to the relative per capita income state j , d_{ij} is a distance measure between income states i and j (defined below) and, finally, k_i is an element introduced into the expression in order to normalize the mobility index. Thus, three elements are considered in the quantification of mobility: size (p_i), transitions (p_{ij}) and distance (d_{ij}).

This index differs from the traditional Bartholomew (1996) measure in three important aspects. First, it considers an alternative definition of distance for situations of state-hierarchy¹⁰. In our opinion, the distance measure proposed in this paper is especially suitable for income contexts. This distance is defined as

⁹ Shorrocks's (1978) mobility measure considers exclusively the elements on the main diagonal of the transition matrix.

¹⁰ When there is a natural ordering of the states, Bartholomew proposes $d_{ij} = |i - j|$ as the distance measure.

the absolute difference between the average per capita income (\bar{y}) of the states under consideration, that is, $d_{ij} = |\bar{y}_j - \bar{y}_i|$. Therefore, according to this definition, when dealing with transitions within each income state, the distance moved, d_{ii} , is 0. On the other hand, transitions between income states will give positive values of d_{ij} ; as is evident, the distance is higher when the differences in the average income of the states considered are larger.

Second, another difference with the original Bartholomew mobility measure is that, instead of the ergodic distribution, our index includes, as a weighting factor, the initial income distribution, given by the elements p_i . This decision responds to the fact that, with non-stationary processes (as is usual in income contexts), the ergodic distribution does not provide a faithful picture of the ultimate consequences of the current income distribution because intra-distribution patterns do not remain unchanged. On the contrary, the initial income distribution allows us to capture the relative size of each income state at the time the mobility degree is being analysed.

Finally, the last difference consists of the introduction of the element k_i , defined as the largest value in the i 's row of \mathbf{D} (matrix of distance with generic elements d_{ij}), in order to obtain a normalized measure in the interval $[0, 1]$. As should be obvious, the definition of distance conditions the meaning of maximum mobility. In our particular case, a situation of maximum mobility, given by $d(\mathbf{P}) = 1$, arises

when, from each income state, all transitions occur towards the more distanced income state, regardless of being an upward or a downward transition.

In addition, mobility indexes for each state can be obtained. This is because the preceding aggregate measure can be inferred by the corresponding state-by-state mobility measures, $d(\mathbf{P}_i)$,

$$d(\mathbf{P}) = \sum_i p_i \cdot d(\mathbf{P}_i) \quad [2]$$

where

$$d(\mathbf{P}_i) = \sum_j \frac{1}{k_i} \cdot p_{ij} \cdot d_{ij} \quad [3]$$

This allows immobile and mobile states to be identified and, accordingly, a separate analysis of the performance of each income state to be carried out.

In order to apply the aforementioned indexes to the European regions, we have considered the following five exhaustive and mutually exclusive income states according to their per capita income relative to the European average: $[0, 75)$, $[75, 90)$, $[90, 110)$, $[110, 125)$, $[125, +\infty)$ ¹¹. Results reported in Table 2 are enlightening, since they provide a numeric support to the conclusions drawn from the highest conditional density and the stochastic kernel approaches. In particular, it is shown that the aggregate mobility measure $d(\mathbf{P})$ reaches a much higher

¹¹ These are the income states usually employed in the literature (see, for instance, Cuadrado et al., 2002; Ezcurra et al., 2006). In addition, this classification is normally used for the European Union in its publications on regional issues.

value for the first period (0.23) than for the second (0.11). This means that mobility in the European income distribution over 1980-1993 has been twice as high as over the 1993-2005 period. Notwithstanding this, the relatively low level of intra-distribution mobility given by this aggregate index for both periods indicates the existence of a strong persistence in the regional per capita income distribution in Europe.

A first look into the transition matrices and the state-by-state indexes allows us to look more deeply into this result. With reference to the period 1980-1993, a feature of note is that the mobility degree is considerably higher in this period than over 1993-2005 not only for the whole distribution but also for all of the income states. This finding comes from the existence of higher transition probabilities to contiguous and non-contiguous states, along with the fact that relative distances between them are greater over this period (see Table 3). Besides, it is worth highlighting the performance of the upper income state of the distribution, $[125, +\infty)$, which reaches the highest mobility (0.36); this, together with its relatively large size in the distribution (0.28), contributes to its effect on the aggregate mobility being eventually noteworthy.

As regards the second period, the higher probabilities on the main diagonal point to a higher persistence; this is especially remarkable in the tails of the distribution. Actually, most income states register an index very close to 0. The only exception refers to the state $[110, 125)$, for which the state-state mobility index is 0.31;

however, its small size (0.14) makes its contribution to the aggregate mobility index quite small.

V. Conclusions

In this paper we have analysed the intra-distribution dynamics of the relative per capita income between the European regions in two periods: 1980-1993 and 1993-2005. To achieve this objective three different approaches have been applied: the stochastic kernel approach, the highest conditional density approach and the estimation of mobility measures based on a Markov chain approach.

The estimation of stochastic kernels, the most generally method used to handle this topic, allows the main changes having occurred in the regional per capita income distribution in Europe to be seen. According to this approach, persistence is the predominant note, although there are also some signs of mobility. More generally, the comparison of the two periods shows that mobility seems to be higher in the first (1980-1993) than in the second period (1993-2005). Nevertheless, the stochastic kernel estimation results cast some doubts.

In order to solve these doubts, the highest conditional density approach is used. This methodology is clearer from a graphical point of view and, furthermore, has better statistical properties than the stochastic kernel approach. Two features of this technique are worth mentioning: first, it highlights the conditioning between variables (while the kernel method displays the joint distribution) and, second, it

employs two bandwidth parameters, controlling the smoothness between conditional densities in the two directions x and y . In this case, the results undoubtedly reveal that, especially in the first period under analysis, some European regions have changed their relative per capita income in a very significant way. Besides this, the results indicate that mobility (both in the first and in the second period) has favoured the convergence process between the European regions, because the poorest (richest) regions have improved (worsened) their relative positions.

Subsequently and, among other reasons, in order to test the robustness of the previous results, the estimation of mobility measures based on a Markov chain approach is carried out. This allows us to obtain an exact measure of intra-distribution mobility. More precisely, this paper has proposed an adaptation of the mobility measure proposed by Bartholomew (1973, 1996) for income contexts. When it is applied to the European regions, this technique not only confirms that the intra-distributional mobility has been higher in the first than in the second period, but it also quantifies this difference; the intra-distribution mobility has been, according to our index, twice as high between 1980 and 1993 as between 1993 and 2005. All the same, the low value of both mobility indexes also corroborates that, in general terms, the regional per capita income distribution in Europe has been characterised by persistence in the last few decades.

To conclude, this paper underlines, and perhaps this is its main lesson, that the application of different approaches is advisable to gain more insight into the

internal mobility of a given distribution. In fact, what we have shown is that the three different approaches employed to deal with the topic of intra-distribution dynamics seem to be complementary, as each one offers a specific, precise view of the issue at stake.

References

- Arbia, G., Basile, R. and Piras, G. (2006) Analyzing intra-distribution dynamics: a reappraisal. ERSA Conference Papers.
- Armstrong, H.W. and Vickerman, R.W. (Ed) (1995) *Convergence and Divergence among European Regions*, Pion Ltd.
- Badinger, H., Müller, W.G. and Tondl, G. (2004) Regional convergence in the European Union, 1985-1999: A spatial dynamic panel analysis, *Regional Studies*, **38(3)**, 241-253.
- Barro, R. and Sala-i-Martin, X. (1991) Convergence across states and regions, *Brookings Papers on Economic Activity*, **1**, 107-82.
- Barro, R. and Sala-i-Martin, X. (1992) Convergence, *Journal of Political Economy*, **100(21)**, 223-251.
- Bartholomew, D.J. (1973) *Stochastic Models for Social Processes*, Wiley, London.
- Bartholomew, D.J. (1996) *The Statistical Approach to Social Measurement*, Academic Press, London.
- Bibby, J. (1975) Methods of Measuring Mobility, *Quality and Quantity*, **9**, 107-136.
- Blumen, I., Kogan, M. and McCarthy, P.J. (1955) *The Industrial Mobility of Labour as a Probability Process*, Cornell University, Ithaca.
- Cuadrado-Roura, J.R., Mancha, T. and Garrido, R. (2002) Regional dynamics in the EU: winners and losers, in *Regional Convergence in the European Union: Facts, Prospects and Policies* (Eds) J.R. Cuadrado and M. Parellada, Springer, Berlin, pp. 23-52.

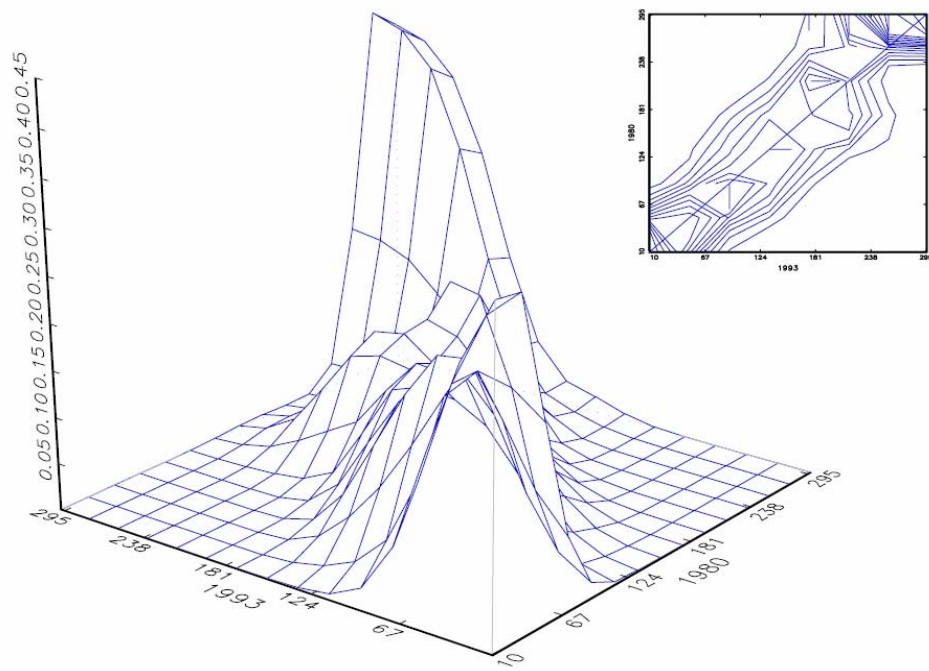
- Cuadrado-Roura, J.R. and Parellada, M. (Eds) (2002) *Regional Convergence in the European Union: Facts, Prospects and Policies*, Springer, Berlin and New York.
- Durlauf, S.N. and Quah, D. (1999) The new empirics for economic growth, in *Handbook of Macroeconomics* (Eds) J. Taylor and M. Woodford, vol. I, North-Holland, Amsterdam, pp. 235-308.
- Ezcurra, R., Gil, C. and Pascual, P. (2006) Regional Mobility in the European Union, *Applied Economics*, **38(19)**, 2237-2253.
- Ezcurra, R., Pascual, P. and Rapún, M. (2007) Spatial disparities in the European Union: An analysis of regional polarization, *Annals of Regional Science*, **41(2)**, 401-429.
- Fields, G.S. and Ok, E.A. (1999) The measurement of income mobility: an introduction to the literature, in *Handbook on Income Inequality Measurement* (Ed) J. Silber, Kluwer Academic Publishers, Boston, pp. 557-98.
- Fingleton, B. (Ed) (2003) *European Regional Growth*, Springer, Berlin.
- Hierro, M. (2007) The effect of Foreign-Born Residents on Migratory Patterns of Natives in Spain, *Economics Bulletin*, **10(3)**, 1-6.
- Hyndman, R.J., Bashtannyk, D.M. and Grunwald, G.K. (1996) Estimating and visualizing conditional densities, *Journal of Computational and Graphical Statistics*, **5(4)**, 315-336.
- Laurini, M., Andrade, E. and Valls, P.L. (2005) Income convergence clubs for Brazilian municipalities: A non-parametric analysis, *Applied Economics*, **37(18)**, 2099-2118.
- Le Gallo, J. (2004) Space-time analysis of GDP disparities among European regions: A Markov chain approach, *International Regional Science Review*, **27**, 138-163.
- López-Bazo, E., Vayá, E., Mora, A. and Suriñach, J. (1999) Regional economic dynamics and convergence in the European Union, *Annals of Regional Science*, **33(3)**, 343-370.

- Magrini, S. (2004) Regional di(convergence), in *Handbook of Regional and Urban Economics* (Eds) J. Henderson and J. Thisse, Elsevier, Amsterdam, pp. 2741-2796.
- Maza, A. and Villaverde, J. (2004) Regional disparities in the EU: Mobility and polarization, *Applied Economics Letters*, **11(8)**, 517-522.
- Meliciani, V. (2006) Income and employment disparities across European regions: The role of national and spatial factors, *Regional Studies*, **40(1)**, 75-91.
- Miller, J.R. and Genc, I. (2005) Alternative regional specification and convergence of U.S. regional growth rates, *Annals of Regional Science*, **39(2)**, 241-252.
- Parker, S.C. and Rougier, J. (2001) Measuring Social Mobility as Unpredictability, *Economica*, **68**, 63-76.
- Parzen, E. (1962) *Stochastic Processes*, Holden-Day, San Francisco.
- Prais, S.J. (1955) The Formal Theory of Social Mobility, *Population Studies*, **9**, 72-81.
- Quah, D. (1996a) Twin peaks: Growth and convergence in models of distribution dynamics, *The Economic Journal*, **437**, 1045-1055.
- Quah, D. (1996b) Empirics for economic growth and convergence, *European Economic Review*, **40**, 1353-1375.
- Quah, D. (1997) Empirics for growth and distribution: stratification, polarization, and convergence clubs, *Journal of Economic Growth*, **2**, 27-59.
- Shorrocks, A.F. (1978) The Measurement of Mobility, *Econometrica*, **46**, 1013-1024.
- Sommers, P.M. and Conlisk, J. (1978) Eigenvalue Inmobility Measures for Markov Chains, *Journal of Mathematical Sociology*, **6**, 253-276.
- Tortosa, E., Pérez, F., Mas, M. and Goerlich, F.J. (2005) Growth and convergence profiles in the Spanish provinces (1965-1997), *Journal of Regional Science*, **45(1)**, 147-182.

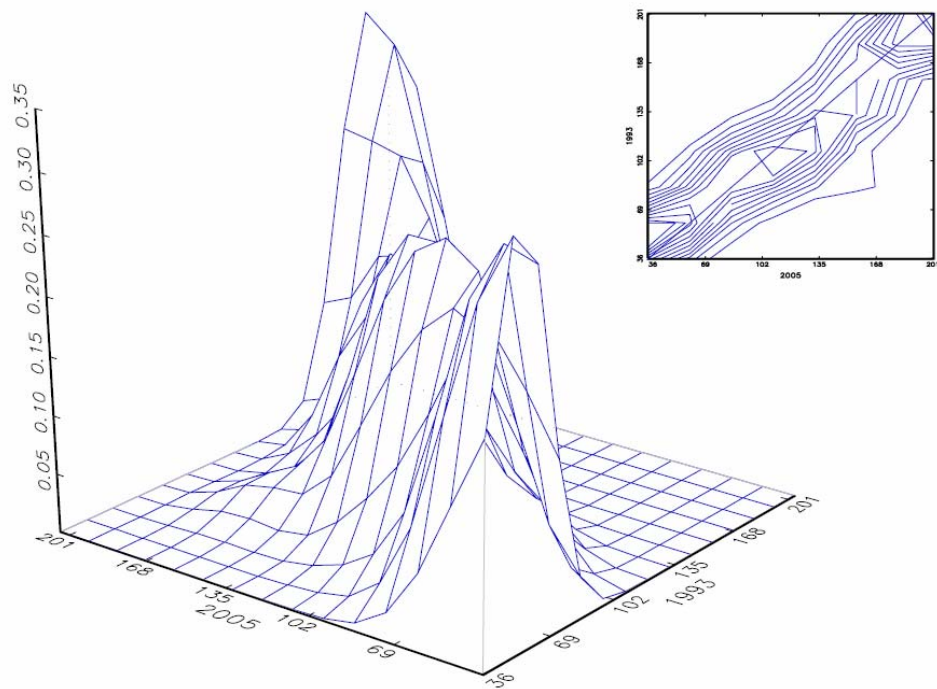
Villaverde, J. and Maza, A. (2007) Productivity convergence in the European regions, 1980-2003: A sectoral and spatial approach, *Applied Economics* (forthcoming).

Table 1. EU per capita income: regional growth rates

Annual average rates of growth	1980-1993	1993-2005
EU-15	1.67	2.21
Ten highest regions	4.06	4.25
Ten lowest regions	-0.99	0.54
Standard deviation	1.00	0.86

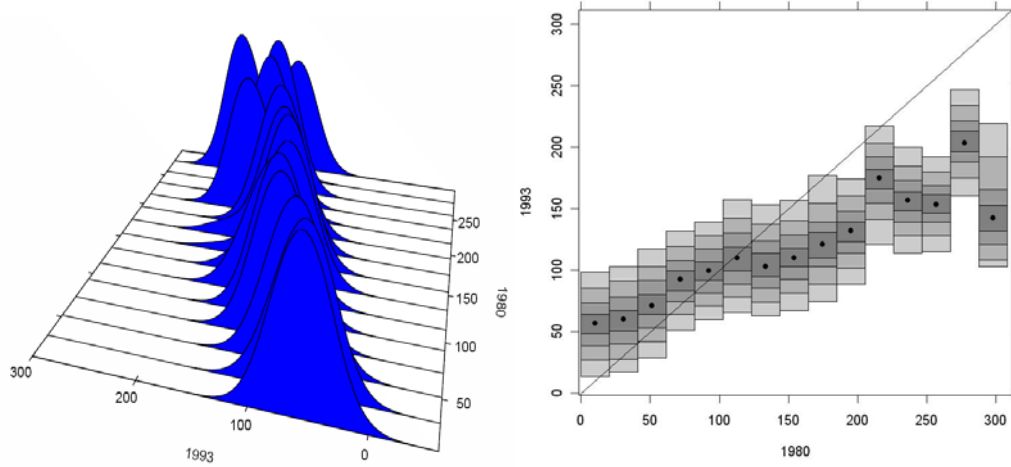


(a) 1980-1993

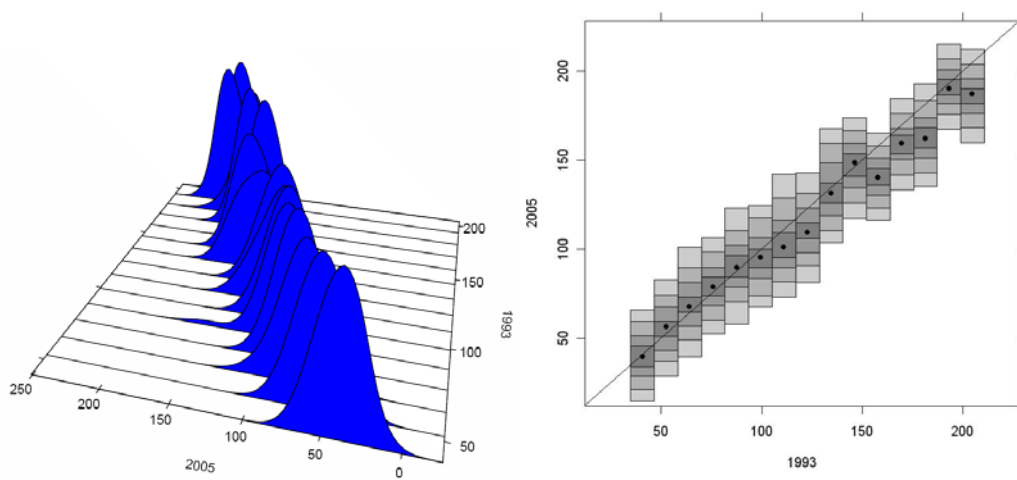


(b) 1993-2005

Fig. 1. Stochastic kernels



(a) 1980-1993



(b) 1993-2005

Fig. 2. Stacked density and highest conditional density plots

Table 2. Aggregated and state-by-state mobility indexes

(a) 1980-1993

States	[0, 75)	[75, 90)	[90, 110)	[110, 125)	[125, +∞)
[0, 75)	0.51	0.29	0.18	0.00	0.00
[75, 90)	0.00	0.11	0.68	0.21	0.00
[90, 110)	0.00	0.05	0.81	0.05	0.00
[110, 125)	0.00	0.00	0.27	0.36	0.36
[125, +∞)	0.00	0.00	0.41	0.30	0.28
p_i	0.42	0.14	0.11	0.06	0.28
$d(\mathbf{P}_i)$	0.17	0.24	0.11	0.32	0.36
$d(\mathbf{P})$	0.23				

(b) 1993-2005

States	[0, 75)	[75, 90)	[90, 110)	[110, 125)	[125, +∞)
[0, 75)	0.84	0.14	0.02	0.00	0.00
[75, 90)	0.00	0.55	0.42	0.03	0.00
[90, 110)	0.00	0.24	0.68	0.08	0.00
[110, 125)	0.00	0.00	0.61	0.21	0.18
[125, +∞)	0.00	0.00	0.00	0.15	0.85
p_i	0.22	0.16	0.38	0.14	0.10
$d(\mathbf{P}_i)$	0.05	0.10	0.09	0.31	0.06
$d(\mathbf{P})$	0.11				

Table 3. Absolute distances between states

(a) 1980-1993

States	[0, 75)	[75, 90)	[90, 110)	[110, 125)	[125, +∞)
[0, 75)	0.00	31.67	49.48	68.47	114.02
[75, 90)	31.67	0.00	17.80	36.80	82.35
[90, 110)	49.48	17.80	0.00	19.00	64.54
[110, 125)	68.47	36.80	19.00	0.00	45.55
[125, +∞)	114.02	82.35	64.54	45.55	0.00

(b) 1993-2005

States	[0, 75)	[75, 90)	[90, 110)	[110, 125)	[125, +∞)
[0, 75)	0.00	23.90	37.73	55.18	90.95
[75, 90)	23.90	0.00	13.83	31.28	67.05
[90, 110)	37.73	13.83	0.00	17.45	53.22
[110, 125)	55.18	31.28	17.45	0.00	35.77
[125, +∞)	90.95	67.05	53.22	35.77	0.00

Appendix: List of European regions

The complete list of regions employed in this paper is the following: BELGIUM (10 regions): Antwerpen, Limburg, Oost-Vlaanderen, Vlaams Brabant, West-Vlaanderen, Brabant Wallon, Hainaut, Liege, Luxembourg, Namur. DENMARK (1): Denmark. GERMANY (31): Stuttgart, Karlsruhe, Freiburg, Tübingen, Oberbayern, Niederbayern, Oberpfalz, Oberfranken, Mittelfranken, Unterfranken, Schwaben, Berlin, Bremen, Hamburg, Darmstadt, Giessen, Kassel, Braunschweig, Hannover, Lüneburg, Weser-Ems, Düsseldorf, Köln, Münster, Detmold, Arnberg, Koblenz, Trier, Rheinhessen-Pfalz, Saarland, Schleswig-Holstein. GREECE (13): Anat. Mak., Kent. Makedonia., Dytiki Makedonia, Tesalia, Ipeiros, Ionia Nisia, Dytiki Ellada, Sterea Ellada, Peloponnisos, Attiki, Voreio Aigaio, Notio Aigaio, Kriti. SPAIN (17): Galicia, Asturias, Cantabria, Pais Vasco, Navarra, Rioja, Aragon, Madrid, Castilla-Leon, Castilla-la Mancha, Extremadura, Cataluña, Com. Valenciana, Baleares, Andalucia, Murcia, Canarias. FRANCE (22): Ile de France, Champagne-Ard., Picardie, Haute-Normandie, Centre, Basse-Normandie, Bourgogne, Nord-Pas de Calais, Lorraine, Alsace, Franche-Comte, Pays de la Loire, Bretagne, Poitou-Charentes, Aquitaine, Midi-Pyrenees, Limousin, Rhone-Alpes, Auvergne, Languedoc-Rouss., Prov-Alpes-Cote d'Azur, Corse. IRELAND (2): Border, Southern and Eastern. ITALY (20): Piemonte, Valle d'Aosta, Liguria, Lombardia, Trentino-Alto Adige, Veneto, Fr.-Venezia Giulia, Emilia-Romagna, Toscana, Umbria, Marche, Lazio, Abruzzi, Molise, Campania, Puglia, Basilicata, Calabria, Sicilia, Sardegna. LUXEMBOURG (1): Luxembourg. NETHERLANDS (12): Groningen, Friesland, Drenthe, Overijssel, Gelderland, Flevoland, Utrecht, Noord-Holland, Zuid-Holland, Zeeland, Noord-Brabant, Limburg. AUSTRIA (9): Burgenland, Niederösterreich, Wien, Karnten, Steiermark, Oberösterreich, Salzburg, Tirol, Vorarlberg. PORTUGAL (7): Norte, Centro, Lisboa e V.do Tejo, Alentejo, Algarbe, Acores, Madeira. FINLAND (6): Ita-Suomi, Vali-Suomi, Pohjois-Suomi, Uusimaa, Etela-Suomi, Aland. SWEDEN (8): Stockholm, Ostra Mellansverige, Sydsverige, Norra Mellansverige, Mellersta Norrland, Övre Norrland, Småland med öarna, Västsverige. UK (37): Tees Valley and Durham, Northumb. et al., Cumbria, Cheshire, Greater Manchester,

Lancashire, Merseyside, East Riding, North Yorkshire, South Yorkshire, West Yorkshire, Derbyshire, Leics., Lincolnshire, Hereford et al., Shrops., West Midlands (county), East Anglia, Bedfordshire, Essex, Inner London, Outer London, Berkshire et al., Surrey, Hants., Kent, Avon et al., Dorset, Cornwall, Devon, West Wales, East Wales, North East Scot., Eastern Scotland, South West Scot., Highlands and Islands, Northern Ireland.

FUNDACIÓN DE LAS CAJAS DE AHORROS

DOCUMENTOS DE TRABAJO

Últimos números publicados

- 159/2000 Participación privada en la construcción y explotación de carreteras de peaje
Ginés de Rus, Manuel Romero y Lourdes Trujillo
- 160/2000 Errores y posibles soluciones en la aplicación del *Value at Risk*
Mariano González Sánchez
- 161/2000 Tax neutrality on saving assets. The spanish case before and after the tax reform
Cristina Ruza y de Paz-Curbera
- 162/2000 Private rates of return to human capital in Spain: new evidence
F. Barceinas, J. Oliver-Alonso, J.L. Raymond y J.L. Roig-Sabaté
- 163/2000 El control interno del riesgo. Una propuesta de sistema de límites
riesgo neutral
Mariano González Sánchez
- 164/2001 La evolución de las políticas de gasto de las Administraciones Públicas en los años 90
Alfonso Utrilla de la Hoz y Carmen Pérez Esparrells
- 165/2001 Bank cost efficiency and output specification
Emili Tortosa-Ausina
- 166/2001 Recent trends in Spanish income distribution: A robust picture of falling income inequality
Josep Oliver-Alonso, Xavier Ramos y José Luis Raymond-Bara
- 167/2001 Efectos redistributivos y sobre el bienestar social del tratamiento de las cargas familiares en
el nuevo IRPF
Nuria Badenes Plá, Julio López Laborda, Jorge Onrubia Fernández
- 168/2001 The Effects of Bank Debt on Financial Structure of Small and Medium Firms in some Euro-
pean Countries
Mónica Melle-Hernández
- 169/2001 La política de cohesión de la UE ampliada: la perspectiva de España
Ismael Sanz Labrador
- 170/2002 Riesgo de liquidez de Mercado
Mariano González Sánchez
- 171/2002 Los costes de administración para el afiliado en los sistemas de pensiones basados en cuentas
de capitalización individual: medida y comparación internacional.
José Enrique Devesa Carpio, Rosa Rodríguez Barrera, Carlos Vidal Meliá
- 172/2002 La encuesta continua de presupuestos familiares (1985-1996): descripción, representatividad
y propuestas de metodología para la explotación de la información de los ingresos y el gasto.
Llorenç Pou, Joaquín Alegre
- 173/2002 Modelos paramétricos y no paramétricos en problemas de concesión de tarjetas de credito.
Rosa Puertas, María Bonilla, Ignacio Olmeda

- 174/2002 Mercado único, comercio intra-industrial y costes de ajuste en las manufacturas españolas.
José Vicente Blanes Cristóbal
- 175/2003 La Administración tributaria en España. Un análisis de la gestión a través de los ingresos y de los gastos.
Juan de Dios Jiménez Aguilera, Pedro Enrique Barrilao González
- 176/2003 The Falling Share of Cash Payments in Spain.
Santiago Carbó Valverde, Rafael López del Paso, David B. Humphrey
Publicado en "Moneda y Crédito" nº 217, pags. 167-189.
- 177/2003 Effects of ATMs and Electronic Payments on Banking Costs: The Spanish Case.
Santiago Carbó Valverde, Rafael López del Paso, David B. Humphrey
- 178/2003 Factors explaining the interest margin in the banking sectors of the European Union.
Joaquín Maudos y Juan Fernández Guevara
- 179/2003 Los planes de stock options para directivos y consejeros y su valoración por el mercado de valores en España.
Mónica Melle Hernández
- 180/2003 Ownership and Performance in Europe and US Banking – A comparison of Commercial, Co-operative & Savings Banks.
Yener Altunbas, Santiago Carbó y Phil Molyneux
- 181/2003 The Euro effect on the integration of the European stock markets.
Mónica Melle Hernández
- 182/2004 In search of complementarity in the innovation strategy: international R&D and external knowledge acquisition.
Bruno Cassiman, Reinhilde Veugelers
- 183/2004 Fijación de precios en el sector público: una aplicación para el servicio municipal de suministro de agua.
M^a Ángeles García Valiñas
- 184/2004 Estimación de la economía sumergida en España: un modelo estructural de variables latentes.
Ángel Alañón Pardo, Miguel Gómez de Antonio
- 185/2004 Causas políticas y consecuencias sociales de la corrupción.
Joan Oriol Prats Cabrera
- 186/2004 Loan bankers' decisions and sensitivity to the audit report using the belief revision model.
Andrés Guiral Contreras and José A. Gonzalo Angulo
- 187/2004 El modelo de Black, Derman y Toy en la práctica. Aplicación al mercado español.
Marta Tolentino García-Abadillo y Antonio Díaz Pérez
- 188/2004 Does market competition make banks perform well?.
Mónica Melle
- 189/2004 Efficiency differences among banks: external, technical, internal, and managerial
Santiago Carbó Valverde, David B. Humphrey y Rafael López del Paso

- 190/2004 Una aproximación al análisis de los costes de la esquizofrenia en España: los modelos jerárquicos bayesianos
F. J. Vázquez-Polo, M. A. Negrín, J. M. Cavasés, E. Sánchez y grupo RIRAG
- 191/2004 Environmental proactivity and business performance: an empirical analysis
Javier González-Benito y Óscar González-Benito
- 192/2004 Economic risk to beneficiaries in notional defined contribution accounts (NDCs)
Carlos Vidal-Meliá, Inmaculada Domínguez-Fabian y José Enrique Devesa-Carpio
- 193/2004 Sources of efficiency gains in port reform: non parametric malmquist decomposition tfp index for Mexico
Antonio Estache, Beatriz Tovar de la Fé y Lourdes Trujillo
- 194/2004 Persistencia de resultados en los fondos de inversión españoles
Alfredo Ciriaco Fernández y Rafael Santamaría Aquilué
- 195/2005 El modelo de revisión de creencias como aproximación psicológica a la formación del juicio del auditor sobre la gestión continuada
Andrés Guiral Contreras y Francisco Esteso Sánchez
- 196/2005 La nueva financiación sanitaria en España: descentralización y prospectiva
David Cantarero Prieto
- 197/2005 A cointegration analysis of the Long-Run supply response of Spanish agriculture to the common agricultural policy
José A. Mendez, Ricardo Mora y Carlos San Juan
- 198/2005 ¿Refleja la estructura temporal de los tipos de interés del mercado español preferencia por la liquidez?
Magdalena Massot Perelló y Juan M. Nave
- 199/2005 Análisis de impacto de los Fondos Estructurales Europeos recibidos por una economía regional: Un enfoque a través de Matrices de Contabilidad Social
M. Carmen Lima y M. Alejandro Cardenete
- 200/2005 Does the development of non-cash payments affect monetary policy transmission?
Santiago Carbó Valverde y Rafael López del Paso
- 201/2005 Firm and time varying technical and allocative efficiency: an application for port cargo handling firms
Ana Rodríguez-Álvarez, Beatriz Tovar de la Fe y Lourdes Trujillo
- 202/2005 Contractual complexity in strategic alliances
Jeffrey J. Reuer y Africa Ariño
- 203/2005 Factores determinantes de la evolución del empleo en las empresas adquiridas por opa
Nuria Alcalde Fradejas y Inés Pérez-Soba Aguilar
- 204/2005 Nonlinear Forecasting in Economics: a comparison between Comprehension Approach versus Learning Approach. An Application to Spanish Time Series
Elena Olmedo, Juan M. Valderas, Ricardo Gimeno and Lorenzo Escot

- 205/2005 Precio de la tierra con presión urbana: un modelo para España
Esther Decimavilla, Carlos San Juan y Stefan Sperlich
- 206/2005 Interregional migration in Spain: a semiparametric analysis
Adolfo Maza y José Villaverde
- 207/2005 Productivity growth in European banking
Carmen Murillo-Melchor, José Manuel Pastor y Emili Tortosa-Ausina
- 208/2005 Explaining Bank Cost Efficiency in Europe: Environmental and Productivity Influences.
Santiago Carbó Valverde, David B. Humphrey y Rafael López del Paso
- 209/2005 La elasticidad de sustitución intertemporal con preferencias no separables intratemporalmente: los casos de Alemania, España y Francia.
Elena Márquez de la Cruz, Ana R. Martínez Cañete y Inés Pérez-Soba Aguilar
- 210/2005 Contribución de los efectos tamaño, book-to-market y momentum a la valoración de activos: el caso español.
Begoña Font-Belaire y Alfredo Juan Grau-Grau
- 211/2005 Permanent income, convergence and inequality among countries
José M. Pastor and Lorenzo Serrano
- 212/2005 The Latin Model of Welfare: Do 'Insertion Contracts' Reduce Long-Term Dependence?
Luis Ayala and Magdalena Rodríguez
- 213/2005 The effect of geographic expansion on the productivity of Spanish savings banks
Manuel Illueca, José M. Pastor and Emili Tortosa-Ausina
- 214/2005 Dynamic network interconnection under consumer switching costs
Ángel Luis López Rodríguez
- 215/2005 La influencia del entorno socioeconómico en la realización de estudios universitarios: una aproximación al caso español en la década de los noventa
Marta Rahona López
- 216/2005 The valuation of spanish ipos: efficiency analysis
Susana Álvarez Otero
- 217/2005 On the generation of a regular multi-input multi-output technology using parametric output distance functions
Sergio Perelman and Daniel Santin
- 218/2005 La gobernanza de los procesos parlamentarios: la organización industrial del congreso de los diputados en España
Gonzalo Caballero Miguez
- 219/2005 Determinants of bank market structure: Efficiency and political economy variables
Francisco González
- 220/2005 Agresividad de las órdenes introducidas en el mercado español: estrategias, determinantes y medidas de performance
David Abad Díaz

- 221/2005 Tendencia post-anuncio de resultados contables: evidencia para el mercado español
Carlos Forner Rodríguez, Joaquín Marhuenda Fructuoso y Sonia Sanabria García
- 222/2005 Human capital accumulation and geography: empirical evidence in the European Union
Jesús López-Rodríguez, J. Andrés Faña y Jose Lopez Rodríguez
- 223/2005 Auditors' Forecasting in Going Concern Decisions: Framing, Confidence and Information Processing
Waymond Rodgers and Andrés Guiral
- 224/2005 The effect of Structural Fund spending on the Galician region: an assessment of the 1994-1999 and 2000-2006 Galician CSFs
José Ramón Cancelo de la Torre, J. Andrés Faña and Jesús López-Rodríguez
- 225/2005 The effects of ownership structure and board composition on the audit committee activity: Spanish evidence
Carlos Fernández Méndez and Rubén Arrondo García
- 226/2005 Cross-country determinants of bank income smoothing by managing loan loss provisions
Ana Rosa Fonseca and Francisco González
- 227/2005 Incumplimiento fiscal en el irpf (1993-2000): un análisis de sus factores determinantes
Alejandro Estellér Moré
- 228/2005 Region versus Industry effects: volatility transmission
Pilar Soriano Felipe and Francisco J. Climent Diranzo
- 229/2005 Concurrent Engineering: The Moderating Effect Of Uncertainty On New Product Development Success
Daniel Vázquez-Bustelo and Sandra Valle
- 230/2005 On zero lower bound traps: a framework for the analysis of monetary policy in the 'age' of central banks
Alfonso Palacio-Vera
- 231/2005 Reconciling Sustainability and Discounting in Cost Benefit Analysis: a methodological proposal
M. Carmen Almansa Sáez and Javier Calatrava Requena
- 232/2005 Can The Excess Of Liquidity Affect The Effectiveness Of The European Monetary Policy?
Santiago Carbó Valverde and Rafael López del Paso
- 233/2005 Inheritance Taxes In The Eu Fiscal Systems: The Present Situation And Future Perspectives.
Miguel Angel Barberán Lahuerta
- 234/2006 Bank Ownership And Informativeness Of Earnings.
V́ctor M. González
- 235/2006 Developing A Predictive Method: A Comparative Study Of The Partial Least Squares Vs Maximum Likelihood Techniques.
Waymond Rodgers, Paul Pavlou and Andres Guiral.
- 236/2006 Using Compromise Programming for Macroeconomic Policy Making in a General Equilibrium Framework: Theory and Application to the Spanish Economy.
Francisco J. André, M. Alejandro Cardenete y Carlos Romero.

- 237/2006 Bank Market Power And Sme Financing Constraints.
Santiago Carbó-Valverde, Francisco Rodríguez-Fernández y Gregory F. Udell.
- 238/2006 Trade Effects Of Monetary Agreements: Evidence For Oecd Countries.
Salvador Gil-Pareja, Rafael Llorca-Vivero y José Antonio Martínez-Serrano.
- 239/2006 The Quality Of Institutions: A Genetic Programming Approach.
Marcos Álvarez-Díaz y Gonzalo Caballero Miguez.
- 240/2006 La interacción entre el éxito competitivo y las condiciones del mercado doméstico como determinantes de la decisión de exportación en las Pymes.
Francisco García Pérez.
- 241/2006 Una estimación de la depreciación del capital humano por sectores, por ocupación y en el tiempo.
Inés P. Murillo.
- 242/2006 Consumption And Leisure Externalities, Economic Growth And Equilibrium Efficiency.
Manuel A. Gómez.
- 243/2006 Measuring efficiency in education: an analysis of different approaches for incorporating non-discretionary inputs.
Jose Manuel Cordero-Ferrera, Francisco Pedraja-Chaparro y Javier Salinas-Jiménez
- 244/2006 Did The European Exchange-Rate Mechanism Contribute To The Integration Of Peripheral Countries?.
Salvador Gil-Pareja, Rafael Llorca-Vivero y José Antonio Martínez-Serrano
- 245/2006 Intergenerational Health Mobility: An Empirical Approach Based On The Echp.
Marta Pascual and David Cantarero
- 246/2006 Measurement and analysis of the Spanish Stock Exchange using the Lyapunov exponent with digital technology.
Salvador Rojí Ferrari and Ana Gonzalez Marcos
- 247/2006 Testing For Structural Breaks In Variance With additive Outliers And Measurement Errors.
Paulo M.M. Rodrigues and Antonio Rubia
- 248/2006 The Cost Of Market Power In Banking: Social Welfare Loss Vs. Cost Inefficiency.
Joaquín Maudos and Juan Fernández de Guevara
- 249/2006 Elasticidades de largo plazo de la demanda de vivienda: evidencia para España (1885-2000).
Desiderio Romero Jordán, José Félix Sanz Sanz y César Pérez López
- 250/2006 Regional Income Disparities in Europe: What role for location?.
Jesús López-Rodríguez and J. Andrés Faña
- 251/2006 Funciones abreviadas de bienestar social: Una forma sencilla de simultanear la medición de la eficiencia y la equidad de las políticas de gasto público.
Nuria Badenes Plá y Daniel Santín González
- 252/2006 "The momentum effect in the Spanish stock market: Omitted risk factors or investor behaviour?".
Luis Muga and Rafael Santamaría
- 253/2006 Dinámica de precios en el mercado español de gasolina: un equilibrio de colusión tácita.
Jordi Perdiguero García

- 254/2006 Desigualdad regional en España: renta permanente versus renta corriente.
José M. Pastor, Empar Pons y Lorenzo Serrano
- 255/2006 Environmental implications of organic food preferences: an application of the impure public goods model.
Ana Maria Aldanondo-Ochoa y Carmen Almansa-Sáez
- 256/2006 Family tax credits versus family allowances when labour supply matters: Evidence for Spain.
José Felix Sanz-Sanz, Desiderio Romero-Jordán y Santiago Álvarez-García
- 257/2006 La internacionalización de la empresa manufacturera española: efectos del capital humano genérico y específico.
José López Rodríguez
- 258/2006 Evaluación de las migraciones interregionales en España, 1996-2004.
María Martínez Torres
- 259/2006 Efficiency and market power in Spanish banking.
Rolf Färe, Shawna Grosskopf y Emili Tortosa-Ausina.
- 260/2006 Asimetrías en volatilidad, beta y contagios entre las empresas grandes y pequeñas cotizadas en la bolsa española.
Helena Chuliá y Hipòlit Torró.
- 261/2006 Birth Replacement Ratios: New Measures of Period Population Replacement.
José Antonio Ortega.
- 262/2006 Accidentes de tráfico, víctimas mortales y consumo de alcohol.
José M^a Arranz y Ana I. Gil.
- 263/2006 Análisis de la Presencia de la Mujer en los Consejos de Administración de las Mil Mayores Empresas Españolas.
Ruth Mateos de Cabo, Lorenzo Escot Mangas y Ricardo Gimeno Nogués.
- 264/2006 Crisis y Reforma del Pacto de Estabilidad y Crecimiento. Las Limitaciones de la Política Económica en Europa.
Ignacio Álvarez Peralta.
- 265/2006 Have Child Tax Allowances Affected Family Size? A Microdata Study For Spain (1996-2000).
Jaime Vallés-Giménez y Anabel Zárate-Marco.
- 266/2006 Health Human Capital And The Shift From Foraging To Farming.
Paolo Rungo.
- 267/2006 Financiación Autonómica y Política de la Competencia: El Mercado de Gasolina en Canarias.
Juan Luis Jiménez y Jordi Perdiguero.
- 268/2006 El cumplimiento del Protocolo de Kyoto para los hogares españoles: el papel de la imposición sobre la energía.
Desiderio Romero-Jordán y José Félix Sanz-Sanz.
- 269/2006 Banking competition, financial dependence and economic growth
Joaquín Maudos y Juan Fernández de Guevara
- 270/2006 Efficiency, subsidies and environmental adaptation of animal farming under CAP
Werner Kleinhanß, Carmen Murillo, Carlos San Juan y Stefan Sperlich

- 271/2006 Interest Groups, Incentives to Cooperation and Decision-Making Process in the European Union
A. Garcia-Lorenzo y Jesús López-Rodríguez
- 272/2006 Riesgo asimétrico y estrategias de momentum en el mercado de valores español
Luis Muga y Rafael Santamaría
- 273/2006 Valoración de capital-riesgo en proyectos de base tecnológica e innovadora a través de la teoría de opciones reales
Gracia Rubio Martín
- 274/2006 Capital stock and unemployment: searching for the missing link
Ana Rosa Martínez-Cañete, Elena Márquez de la Cruz, Alfonso Palacio-Vera and Inés Pérez-Soba Aguilar
- 275/2006 Study of the influence of the voters' political culture on vote decision through the simulation of a political competition problem in Spain
Sagrario Lantarón, Isabel Lillo, M^a Dolores López and Javier Rodrigo
- 276/2006 Investment and growth in Europe during the Golden Age
Antonio Cubel and M^a Teresa Sanchis
- 277/2006 Efectos de vincular la pensión pública a la inversión en cantidad y calidad de hijos en un modelo de equilibrio general
Robert Meneu Gaya
- 278/2006 El consumo y la valoración de activos
Elena Márquez y Belén Nieto
- 279/2006 Economic growth and currency crisis: A real exchange rate entropic approach
David Matesanz Gómez y Guillermo J. Ortega
- 280/2006 Three measures of returns to education: An illustration for the case of Spain
María Arrazola y José de Hevia
- 281/2006 Composition of Firms versus Composition of Jobs
Antoni Cunyat
- 282/2006 La vocación internacional de un holding tranviario belga: la Compagnie Mutuelle de Tramways, 1895-1918
Alberte Martínez López
- 283/2006 Una visión panorámica de las entidades de crédito en España en la última década.
Constantino García Ramos
- 284/2006 Foreign Capital and Business Strategies: a comparative analysis of urban transport in Madrid and Barcelona, 1871-1925
Alberte Martínez López
- 285/2006 Los intereses belgas en la red ferroviaria catalana, 1890-1936
Alberte Martínez López
- 286/2006 The Governance of Quality: The Case of the Agrifood Brand Names
Marta Fernández Barcala, Manuel González-Díaz y Emmanuel Raynaud
- 287/2006 Modelling the role of health status in the transition out of malthusian equilibrium
Paolo Rungo, Luis Currais and Berta Rivera
- 288/2006 Industrial Effects of Climate Change Policies through the EU Emissions Trading Scheme
Xavier Labandeira and Miguel Rodríguez

- 289/2006 Globalisation and the Composition of Government Spending: An analysis for OECD countries
Norman Gemmell, Richard Kneller and Ismael Sanz
- 290/2006 La producción de energía eléctrica en España: Análisis económico de la actividad tras la liberalización del Sector Eléctrico
Fernando Hernández Martínez
- 291/2006 Further considerations on the link between adjustment costs and the productivity of R&D investment: evidence for Spain
Desiderio Romero-Jordán, José Félix Sanz-Sanz and Inmaculada Álvarez-Ayuso
- 292/2006 Una teoría sobre la contribución de la función de compras al rendimiento empresarial
Javier González Benito
- 293/2006 Agility drivers, enablers and outcomes: empirical test of an integrated agile manufacturing model
Daniel Vázquez-Bustelo, Lucía Avella and Esteban Fernández
- 294/2006 Testing the parametric vs the semiparametric generalized mixed effects models
María José Lombardía and Stefan Sperlich
- 295/2006 Nonlinear dynamics in energy futures
Mariano Matilla-García
- 296/2006 Estimating Spatial Models By Generalized Maximum Entropy Or How To Get Rid Of W
Esteban Fernández Vázquez, Matías Mayor Fernández and Jorge Rodríguez-Valez
- 297/2006 Optimización fiscal en las transmisiones lucrativas: análisis metodológico
Félix Domínguez Barrero
- 298/2006 La situación actual de la banca online en España
Francisco José Climent Diranzo y Alexandre Momparler Pechuán
- 299/2006 Estrategia competitiva y rendimiento del negocio: el papel mediador de la estrategia y las capacidades productivas
Javier González Benito y Isabel Suárez González
- 300/2006 A Parametric Model to Estimate Risk in a Fixed Income Portfolio
Pilar Abad and Sonia Benito
- 301/2007 Análisis Empírico de las Preferencias Sociales Respecto del Gasto en Obra Social de las Cajas de Ahorros
Alejandro Esteller-Moré, Jonathan Jorba Jiménez y Albert Solé-Ollé
- 302/2007 Assessing the enlargement and deepening of regional trading blocs: The European Union case
Salvador Gil-Pareja, Rafael Llorca-Vivero y José Antonio Martínez-Serrano
- 303/2007 ¿Es la Franquicia un Medio de Financiación?: Evidencia para el Caso Español
Vanessa Solís Rodríguez y Manuel González Díaz
- 304/2007 On the Finite-Sample Biases in Nonparametric Testing for Variance Constancy
Paulo M.M. Rodrigues and Antonio Rubia
- 305/2007 Spain is Different: Relative Wages 1989-98
José Antonio Carrasco Gallego

- 306/2007 Poverty reduction and SAM multipliers: An evaluation of public policies in a regional framework
Francisco Javier De Miguel-Vélez y Jesús Pérez-Mayo
- 307/2007 La Eficiencia en la Gestión del Riesgo de Crédito en las Cajas de Ahorro
Marcelino Martínez Cabrera
- 308/2007 Optimal environmental policy in transport: unintended effects on consumers' generalized price
M. Pilar Socorro and Ofelia Betancor
- 309/2007 Agricultural Productivity in the European Regions: Trends and Explanatory Factors
Roberto Ezcurra, Belen Iraizoz, Pedro Pascual and Manuel Rapún
- 310/2007 Long-run Regional Population Divergence and Modern Economic Growth in Europe: a Case Study of Spain
María Isabel Ayuda, Fernando Collantes and Vicente Pinilla
- 311/2007 Financial Information effects on the measurement of Commercial Banks' Efficiency
Borja Amor, María T. Tascón and José L. Fanjul
- 312/2007 Neutralidad e incentivos de las inversiones financieras en el nuevo IRPF
Félix Domínguez Barrero
- 313/2007 The Effects of Corporate Social Responsibility Perceptions on The Valuation of Common Stock
Waymond Rodgers , Helen Choy and Andres Guiral-Contreras
- 314/2007 Country Creditor Rights, Information Sharing and Commercial Banks' Profitability Persistence across the world
Borja Amor, María T. Tascón and José L. Fanjul
- 315/2007 ¿Es Relevante el Déficit Corriente en una Unión Monetaria? El Caso Español
Javier Blanco González y Ignacio del Rosal Fernández
- 316/2007 The Impact of Credit Rating Announcements on Spanish Corporate Fixed Income Performance: Returns, Yields and Liquidity
Pilar Abad, Antonio Díaz and M. Dolores Robles
- 317/2007 Indicadores de Lealtad al Establecimiento y Formato Comercial Basados en la Distribución del Presupuesto
Cesar Augusto Bustos Reyes y Óscar González Benito
- 318/2007 Migrants and Market Potential in Spain over The XXth Century: A Test Of The New Economic Geography
Daniel A. Tirado, Jordi Pons, Elisenda Paluzie and Javier Silvestre
- 319/2007 El Impacto del Coste de Oportunidad de la Actividad Emprendedora en la Intención de los Ciudadanos Europeos de Crear Empresas
Luis Miguel Zapico Aldeano
- 320/2007 Los belgas y los ferrocarriles de vía estrecha en España, 1887-1936
Alberte Martínez López
- 321/2007 Competición política bipartidista. Estudio geométrico del equilibrio en un caso ponderado
Isabel Lillo, M^a Dolores López y Javier Rodrigo
- 322/2007 Human resource management and environment management systems: an empirical study
M^a Concepción López Fernández, Ana M^a Serrano Bedía and Gema García Piqueres

- 323/2007 Wood and industrialization. evidence and hypotheses from the case of Spain, 1860-1935.
Iñaki Iriarte-Goñi and María Isabel Ayuda Bosque
- 324/2007 New evidence on long-run monetary neutrality.
J. Cunado, L.A. Gil-Alana and F. Perez de Gracia
- 325/2007 Monetary policy and structural changes in the volatility of us interest rates.
Juncal Cuñado, Javier Gomez Biscarri and Fernando Perez de Gracia
- 326/2007 The productivity effects of intrafirm diffusion.
Lucio Fuentelsaz, Jaime Gómez and Sergio Palomas
- 327/2007 Unemployment duration, layoffs and competing risks.
J.M. Arranz, C. García-Serrano and L. Toharia
- 328/2007 El grado de cobertura del gasto público en España respecto a la UE-15
Nuria Rueda, Begoña Barruso, Carmen Calderón y M^a del Mar Herrador
- 329/2007 The Impact of Direct Subsidies in Spain before and after the CAP'92 Reform
Carmen Murillo, Carlos San Juan and Stefan Sperlich
- 330/2007 Determinants of post-privatisation performance of Spanish divested firms
Laura Cabeza García and Silvia Gómez Ansón
- 331/2007 ¿Por qué deciden diversificar las empresas españolas? Razones oportunistas versus razones económicas
Almudena Martínez Campillo
- 332/2007 Dynamical Hierarchical Tree in Currency Markets
Juan Gabriel Brida, David Matesanz Gómez and Wiston Adrián Risso
- 333/2007 Los determinantes sociodemográficos del gasto sanitario. Análisis con microdatos individuales
Ana María Angulo, Ramón Barberán, Pilar Egea y Jesús Mur
- 334/2007 Why do companies go private? The Spanish case
Inés Pérez-Soba Aguilar
- 335/2007 The use of gis to study transport for disabled people
Verónica Cañal Fernández
- 336/2007 The long run consequences of M&A: An empirical application
Cristina Bernad, Lucio Fuentelsaz and Jaime Gómez
- 337/2007 Las clasificaciones de materias en economía: principios para el desarrollo de una nueva clasificación
Valentín Edo Hernández
- 338/2007 Reforming Taxes and Improving Health: A Revenue-Neutral Tax Reform to Eliminate Medical and Pharmaceutical VAT
Santiago Álvarez-García, Carlos Pestana Barros y Juan Prieto-Rodríguez
- 339/2007 Impacts of an iron and steel plant on residential property values
Celia Bilbao-Terol
- 340/2007 Firm size and capital structure: Evidence using dynamic panel data
V́ctor M. González and Francisco González

- 341/2007 ¿Cómo organizar una cadena hotelera? La elección de la forma de gobierno
Marta Fernández Barcala y Manuel González Díaz
- 342/2007 Análisis de los efectos de la decisión de diversificar: un contraste del marco teórico “Agencia-Stewardship”
Almudena Martínez Campillo y Roberto Fernández Gago
- 343/2007 Selecting portfolios given multiple eurostoxx-based uncertainty scenarios: a stochastic goal programming approach from fuzzy betas
Enrique Ballester, Blanca Pérez-Gladish, Mar Arenas-Parra and Amelia Bilbao-Terol
- 344/2007 “El bienestar de los inmigrantes y los factores implicados en la decisión de emigrar”
Anastasia Hernández Alemán y Carmelo J. León
- 345/2007 Governance Decisions in the R&D Process: An Integrative Framework Based on TCT and Knowledge View of The Firm.
Andrea Martínez-Noya and Esteban García-Canal
- 346/2007 Diferencias salariales entre empresas públicas y privadas. El caso español
Begoña Cueto y Nuria Sánchez- Sánchez
- 347/2007 Effects of Fiscal Treatments of Second Home Ownership on Renting Supply
Celia Bilbao Terol and Juan Prieto Rodríguez
- 348/2007 Auditors’ ethical dilemmas in the going concern evaluation
Andres Guiral, Waymond Rodgers, Emiliano Ruiz and Jose A. Gonzalo
- 349/2007 Convergencia en capital humano en España. Un análisis regional para el periodo 1970-2004
Susana Morales Sequera y Carmen Pérez Esparrells
- 350/2007 Socially responsible investment: mutual funds portfolio selection using fuzzy multiobjective programming
Blanca M^a Pérez-Gladish, Mar Arenas-Parra , Amelia Bilbao-Terol and M^a Victoria Rodríguez-Uría
- 351/2007 Persistencia del resultado contable y sus componentes: implicaciones de la medida de ajustes por devengo
Raúl Iñiguez Sánchez y Francisco Poveda Fuentes
- 352/2007 Wage Inequality and Globalisation: What can we Learn from the Past? A General Equilibrium Approach
Concha Betrán, Javier Ferri and Maria A. Pons
- 353/2007 Eficacia de los incentivos fiscales a la inversión en I+D en España en los años noventa
Desiderio Romero Jordán y José Félix Sanz Sanz
- 354/2007 Convergencia regional en renta y bienestar en España
Robert Meneu Gaya
- 355/2007 Tributación ambiental: Estado de la Cuestión y Experiencia en España
Ana Carrera Poncela
- 356/2007 Salient features of dependence in daily us stock market indices
Luis A. Gil-Alana, Juncal Cuñado and Fernando Pérez de Gracia
- 357/2007 La educación superior: ¿un gasto o una inversión rentable para el sector público?
Inés P. Murillo y Francisco Pedraja

- 358/2007 Effects of a reduction of working hours on a model with job creation and job destruction
Emilio Domínguez, Miren Ullibarri y Idoya Zabaleta
- 359/2007 Stock split size, signaling and earnings management: Evidence from the Spanish market
José Yagüe, J. Carlos Gómez-Sala and Francisco Poveda-Fuentes
- 360/2007 Modelización de las expectativas y estrategias de inversión en mercados de derivados
Begoña Font-Belaire
- 361/2008 Trade in capital goods during the golden age, 1953-1973
M^a Teresa Sanchis and Antonio Cubel
- 362/2008 El capital económico por riesgo operacional: una aplicación del modelo de distribución de pérdidas
Enrique José Jiménez Rodríguez y José Manuel Fera Domínguez
- 363/2008 The drivers of effectiveness in competition policy
Joan-Ramon Borrell and Juan-Luis Jiménez
- 364/2008 Corporate governance structure and board of directors remuneration policies: evidence from Spain
Carlos Fernández Méndez, Rubén Arrondo García and Enrique Fernández Rodríguez
- 365/2008 Beyond the disciplinary role of governance: how boards and donors add value to Spanish foundations
Pablo De Andrés Alonso, Valentín Azofra Palenzuela y M. Elena Romero Merino
- 366/2008 Complejidad y perfeccionamiento contractual para la contención del oportunismo en los acuerdos de franquicia
Vanessa Solís Rodríguez y Manuel González Díaz
- 367/2008 Inestabilidad y convergencia entre las regiones europeas
Jesús Mur, Fernando López y Ana Angulo
- 368/2008 Análisis espacial del cierre de explotaciones agrarias
Ana Aldanondo Ochoa, Carmen Almansa Sáez y Valero Casanovas Oliva
- 369/2008 Cross-Country Efficiency Comparison between Italian and Spanish Public Universities in the period 2000-2005
Tommaso Agasisti and Carmen Pérez Esparrells
- 370/2008 El desarrollo de la sociedad de la información en España: un análisis por comunidades autónomas
María Concepción García Jiménez y José Luis Gómez Barroso
- 371/2008 El medioambiente y los objetivos de fabricación: un análisis de los modelos estratégicos para su consecución
Lucía Avella Camarero, Esteban Fernández Sánchez y Daniel Vázquez-Bustelo
- 372/2008 Influence of bank concentration and institutions on capital structure: New international evidence
Víctor M. González and Francisco González
- 373/2008 Generalización del concepto de equilibrio en juegos de competición política
M^a Dolores López González y Javier Rodrigo Hitos
- 374/2008 Smooth Transition from Fixed Effects to Mixed Effects Models in Multi-level regression Models
María José Lombardía and Stefan Sperlich

- 375/2008 A Revenue-Neutral Tax Reform to Increase Demand for Public Transport Services
Carlos Pestana Barros and Juan Prieto-Rodriguez
- 376/2008 Measurement of intra-distribution dynamics: An application of different approaches to the European regions
Adolfo Maza, María Hierro and José Villaverde