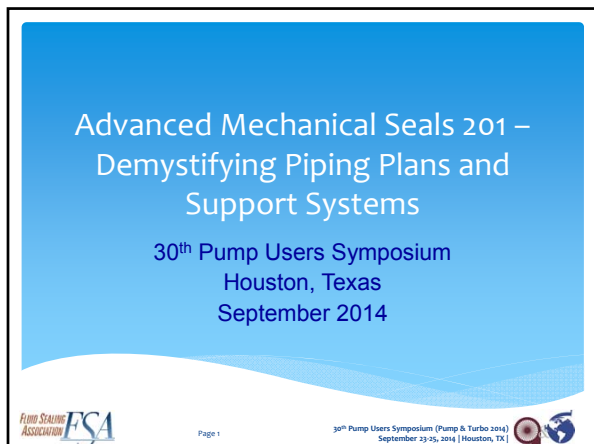


# Pump User Symposium Short Course

# Advanced Mechanical Seals 201 Demystifying Piping Plans and Support Systems




---

---

---

---

---

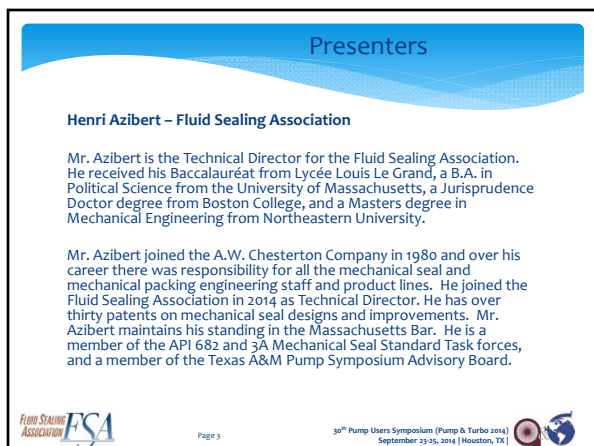
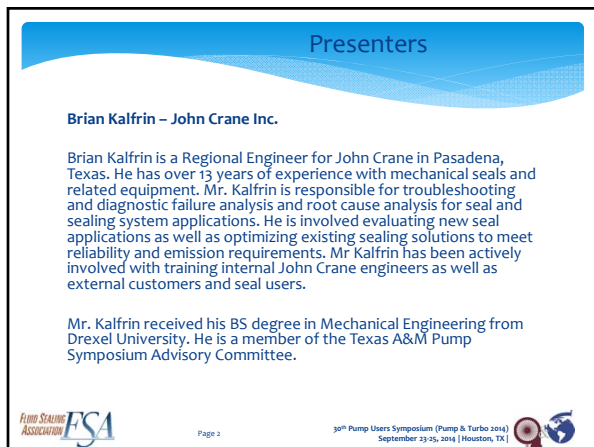
---

---

---

---

---



**Presenters**

**John Merrill – EagleBurgmann Industries**

Mr. Merrill is responsible for technical training at EagleBurgmann in the US. He has been active in the sealing industry for over 20 years in various positions including application, design, sales and field support of mechanical seals and systems. He received a BS in Mechanical Engineering from the University of Tulsa and MSME from Western Michigan University.

Mr. Merrill has conducted internal and customer training throughout his career with a focus on supply systems and failure analysis.

FLUID SEALING ASSOCIATION FSA Page 4 30th Pump Users Symposium (Pump & Turbo 2014) September 23-25, 2014 | Houston, TX



**Presenters**

**Michael Huebner – Flowserve Corporation**

Mr. Huebner is a Principle Engineer at Flowserve Corporation in Deer Park, Texas. Mr. Huebner has been involved with the design and application of centrifugal pumps, mechanical seals, and fluid handling equipment for over 30 years. At Flowserve, he has been responsible with new product development, research, product testing, field service, and technical support. He has published numerous articles in publications and journals including in the Pump Handbook and the Encyclopedia of Tribology. He has held engineering positions both in the U.S. and Europe.

Mr. Huebner has taught extensively around the world on topics of mechanical seals, pump operations, failure analysis, and API 682. He continues to support training internally, at end users, and at major symposiums and conferences. Mr. Huebner received his BA in Engineering Technology from Texas A&M University. He is a member of the API 682 Task Force on mechanical seals and the ASME B73 Committee for centrifugal pumps. He is on the Texas A&M Pumps Users Symposium Advisory Committee and is a member of ASME.

FLUID SEALING ASSOCIATION FSA Page 5 30th Pump Users Symposium (Pump & Turbo 2014) September 23-25, 2014 | Houston, TX



**Course Overview**

- \* Introduction
- \* Section One
  - \* Plan 11 + Calculations
  - \* Plan 13 + Calculations
  - \* Plan 14
- \* Section Two
  - \* Plan 21 + Calculations
  - \* Plan 23 + Calculations
  - \* Plan 32 + Calculations
  - \* LCC Calculator
- \* Section Three
  - \* Plan 52
  - \* Plan 53A, Plan 53B and Plan 53C + Calculations
- \* Section Four
  - \* Plan 65A and Plan 65B
  - \* Plan 66A and Plan 66B
  - \* Plan 72
  - \* Plan 74
  - \* Plan 75
  - \* Plan 76

FLUID SEALING ASSOCIATION FSA Page 6 30th Pump Users Symposium (Pump & Turbo 2014) September 23-25, 2014 | Houston, TX

