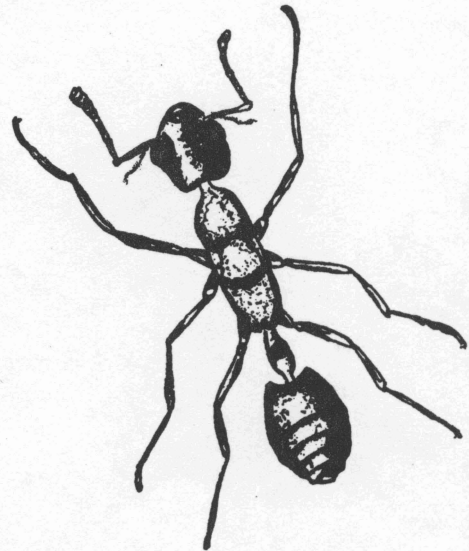


Control of Ants in Houses and Lawns

*Neal M. Randolph and F. M. Fuller, Jr.
Extension Entomologists
Texas A. & M. College System*

Life History and Habits

Many species of ants are pests in the home. They infest food supplies, flower beds and lawns. Ants build nests or colonies in which the queens and young ants live. The worker ants normally are seen busily traveling in and out of the nests. They collect and carry food into the nests to feed the queens and young. Killing the workers outside the nests merely weakens the colony unless enough workers are destroyed to reduce seriously the food supply for the queens and young. It is essential therefore, to locate and destroy the nests in order to kill the queens and young.



Ant Control in the Home

To control ants in the home, it is advisable to spray with a two percent chlordane household spray. The spray should be applied to the baseboards, window and door facings, water pipe fittings and other places where ants may enter the home. This control measure will provide only temporary relief; therefore, it is advisable to treat around the foundation of the house and other outside premises to destroy colonies. This will help prevent reinfestation. Chlordane dust or spray may be used. Apply a five or ten percent chlordane dust to the surface of the ground for a distance of several feet out from the house. A spray made from a wettable powder or an emulsion concentrate may be used in the same manner. These materials should be diluted with water

according to directions given on the manufacturer's label. Treat individual colonies by liberal dusting or spraying of chlordane around the entrance to the colony and work it into the soil with a rake or some other suitable tool.

Ant Control in Lawns

Colonies that are widely-scattered over the lawn should be dusted thoroughly with five or ten percent chlordane or two percent dieldrin dust. Sprinkle the lawn after applying the dust. Another method is to dust a wettable powder of chlordane or dieldrin around the colony and water in slowly. If sprays are used, follow the manufacturer's directions for dilutions. *Dieldrin is for use only outside the home.*

TEXAS AGRICULTURAL EXTENSION SERVICE

G. G. Gibson, Director, College Station, Texas