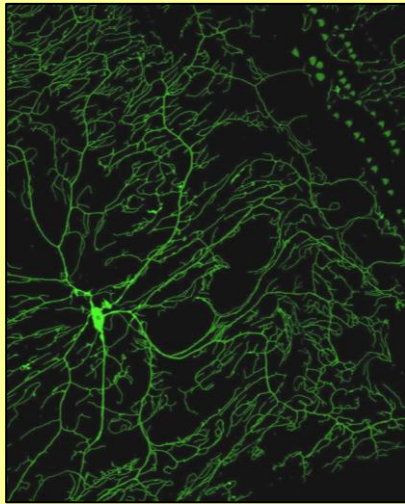


SEMINAR SERIES



From Corals to Kidney Transplant Patients – Population Genetic/Genomic approaches to diverse problems

Seminar will be live-streamed at <http://stream1.une.edu>



Daniel A. Brazeau, Ph.D.

Research Associate Professor, Director
Genomics Research Core, Department
of Biomedical Sciences, College of
Osteopathic Medicine

Daniel Brazeau is a Research Associate Professor at the University of New England. He holds joint appointments in the Departments of Pharmaceutical Sciences in the College of Pharmacy and Biomedical Sciences in the College of Osteopathic Medicine. He received his B.S. and M.S. from the University of Toledo and earned his Ph.D. in Biological Sciences (1989) from the University at Buffalo (UB). Following postdoctoral training at the University of Houston he was a Research Assistant Professor in the Department of Zoology at the University of Florida (UF) and Director of UF's Genetic Analysis Laboratory. Prior to joining UNE he was a Research Associate Professor in the Department of Pharmaceutical Sciences and Director of the Pharmaceutical Genetics Laboratory at UB. Dr. Brazeau is Director of UNE's Genomics Research Laboratory.

Dr. Brazeau's research focuses in genetics and pharmacogenomics. He is a member of the NSF's Geneticist-Educator Network Alliances working with high school teachers to incorporate genetics into the classroom. He was the founding Chair of the Pharmacogenomics SIG in the American Association of Colleges of Pharmacy.

**Thursday
December 8
2016
12:00-1:00 p.m.**

**Leonard Hall
UNE Biddeford
Campus**

Lunch will be provided
**Sign in to Blue Crew
for 50 Points!**

Sponsor:

• **Biomedical Sciences, College of Osteopathic Medicine**