

rASUDAS: A New Web-Based Application for Estimating Ancestry from Tooth Morphology

Journal:	<i>Forensic Anthropology</i>
Manuscript ID	Draft
Manuscript Type:	Research Article
Keywords:	dental non-metrics, quantitative analysis, Arizona State University Dental Anthropology System, Bayesian statistics

SCHOLARONE™
Manuscripts

Abstract

The use of dental morphology to estimate ancestry has a long history within dental anthropology. Over the past two decades methods employing dental morphology within forensic anthropology have become more formalized with the incorporation of statistical models. We present here on a new application (rASUDAS) to estimate ancestry of unknown individuals using crown and root morphology of the dentition. The reference sample is composed of 21 traits based on the Arizona State University Dental Anthropology System and represents approximately 30,000 individuals from seven geographic regions. The statistical program was created in R and uses a naïve Bayes classifier algorithm to assign posterior probabilities for individual group assignment. A random sample of 150 individuals from the dataset was chosen and input into the program. In a seven-group analysis, the model was correct in group assignment 51.8% of the time. In a four-group analysis, classification improved to 66.7%, and with only three groups considered the accuracy improved to 72.7%. It is still necessary to validate the program using forensic cases and to augment the reference sample with modern skeletal data. However, we present these results as a proof of concept of the statistical application and the use of dental morphology in the estimation of ancestry.

Keywords: dental non-metrics, quantitative analysis, Arizona State University Dental Anthropology System, Bayesian statistics

1
2
3
4
5
6
7 In 1922, William King Gregory opined “Apart from a few striking cases, presently to be
8 noted, racial characters in the teeth are at most not very conspicuous.” The traits he considered
9 variable enough to be noted included shovel-shaped incisors, upper molar cusp number, lower
10 molar cusp number, “Dryopithecus” pattern, and Carabelli’s cusp (Gregory 1922:476). This
11 same sentiment was echoed 35 years later by Lasker and Lee (1957) who wrote that “the
12 extravagant hopes for the use of dental features as ‘hallmarks of race’ have not been fulfilled”
13 (pg. 401). Based on the literature of their day, these scholars were correct. Relative to
14 developments in the field over the past century, they were far from correct. Dozens of human
15 tooth crown and root traits have been defined since these statements that show patterned
16 geographic variation.
17
18
19
20
21
22
23
24
25
26
27
28

29
30 Dental anthropologists have used morphology to address a broad range of historical
31 issues, including the peopling of the Americas and the colonization of Pacific islands (cf. Scott
32 and Turner 1997, for many examples). These biodistance studies are based on comparisons of
33 sample frequencies between three or more groups and fall primarily within the realm of
34 bioarchaeology. The use of dental morphology in forensic anthropology has fallen short of their
35 application in bioarchaeological studies.
36
37
38
39
40
41
42

43
44 Forensic anthropologists often prefer bones to teeth in general and for ancestry estimation
45 in particular (i.e., craniometrics, morphoscopic traits of crania and postcrania). In forensic labs,
46 it is commonplace for individuals to follow methodological guides for finding cranial landmarks
47 that are then used to obtain craniometric measurements. These measurements are input into the
48 widely available Fordisc program that uses discriminant function analysis to assign an individual
49 to one of 13 reference population samples (Jantz and Ousley 2005). By contrast, dental
50
51
52
53
54
55
56
57
58
59
60

1
2
3 morphology receives relatively little attention, even when teeth are perfectly preserved and
4
5 largely unworn. A brief review of major forensic anthropology manuals and texts illustrates this
6
7 point.
8
9

10 In the edited volume on the *Skeletal Attribution of Race*, Rhine (1990) identifies six
11
12 morphological variants of the teeth as being of forensic significance in the estimation of
13
14 ancestry. These are Carabelli's cusps ("American Caucasoid"); shoveling of incisors, incisor
15
16 rotation, enamel extensions, and buccal pits ("Southwestern Mongoloid"); and molar
17
18 crenulations ("American Black"). Although, little data are provided on trait frequency in these
19
20 groups. In the second edition of *Forensic Osteology*, Reichs (1998) does not include any papers
21
22 on the role of dental morphology in forensic anthropology. In the *Forensic Anthropology*
23
24 *Training Manual*, Burns (1999) notes two 'racial' traits in the dentition. In some ways harkening
25
26 back to Gregory, the two traits noted are shovel-shaped incisors, characterizing Asian and
27
28 American Indian groups, and Carabelli's cusp, characterizing European-derived populations. In
29
30 *Introduction to Forensic Anthropology*, Byers (2002) only notes one trait for ancestry estimation,
31
32 shovel-shaped incisors. In the associated laboratory manual, the exercise for 'attributing
33
34 ancestry using cranial anthroposcopy' has only this trait for teeth: Upper incisors -- Spatulate
35
36 (Whites), Spatulate (Blacks), Shoveled (Asians). In *Forensic Anthropology*, Komar and Buikstra
37
38 (2008) do not mention dental morphology but note that for assessing ancestry "by far the most
39
40 commonly used is the Fordisc computer program" (pg. 147). *A Companion to Forensic*
41
42 *Anthropology* (Dirkmaat 2012) includes a chapter entitled "Morphoscopic Traits and the
43
44 Assessment of Ancestry" by Hefner, Ousley, and Dirkmaat (2012). While the authors recognize
45
46 the promise of dental morphology for ancestry assessment, they note these traits will only be
47
48 useful when there is: (1) significant reference data from populations around the world; (2)
49
50
51
52
53
54
55
56
57
58
59
60

1
2
3 standardized protocols for scoring traits; and (3) rigorous statistics that can be used with
4
5 categorical data. These recommendations are addressed in detail later.
6

7
8 The edited volume *Biological Affinity in Forensic Identification of Human Skeletal*
9
10 *Remains* (Berg and Ta'ala 2015) includes two chapters by dental morphologists who address how
11
12 dental traits can be used in ancestry estimation. Irish (2015) developed a method that assigns an
13
14 individual to one of five groups (East Asian, American Indian, White, Polynesian, Black) based
15
16 on ten crown traits. Although the method works well to determine which of the five group an
17
18 individual most likely belongs, it does not involve the calculation of a probability. Edgar (2015)
19
20 presents an overview of previous work (Edgar 2005; 2013), in which she uses ten crown traits
21
22 and a logistic regression model to estimate ancestry for four groups (African American,
23
24 European American, Hispanic from New Mexico, and Hispanic from South Florida). Relative to
25
26 these four groups, a test sample yielded a correct assignment rate of over 70%. While errors and
27
28 probabilities are presented in her work, the reference sample is somewhat limited for use in the
29
30 United States. In contrast to all previous studies, this paper introduces a new application that
31
32 uses an individual's suite of dental morphological traits that computes a posterior probability for
33
34 group assignment, i.e. ancestry estimation.
35
36
37
38
39
40

41 **1. Global variation in tooth crown and root morphology**

42 1.1. What is tooth morphology?

43
44
45 Some researchers consider tooth size one aspect of tooth morphology. We do not. While
46
47 tooth size, or odontometrics, provides a broad suite of useful variables (see Kieser 1990), our use
48
49 of the term morphology relates primarily to traits that are present or absent, and when present,
50
51 exhibit variable degrees of expression. Over three dozen such traits have been codified in the
52
53 Arizona State University Dental Anthropology System (Turner et al. 1991). These traits have
54
55
56
57
58
59
60

1
2
3 been described in books and articles (cf., Edgar In Press; Scott 2008; Scott and Turner 1997;
4
5 Scott and Pilloud In press; Scott et al. 2015), so there is no need to describe every variable in
6
7 detail. To illustrate the general nature of these traits, we consider shovel-shaped incisors, the one
8
9 morphological variable that receives attention in forensic anthropological circles (e.g., Birkby et
10
11 al. 2008; Hinkes 1990; Hurst 2012; Rhine 1990).
12
13
14

15
16 Upper and lower incisors are typically spatulate in shape with straight incisal edges that
17
18 serve for biting and cutting (e.g., check tooth impressions after biting an apple or block of
19
20 cheese). Human incisors show a number of morphological variables, of which shoveling is the
21
22 most useful and varied. Shoveling relates primarily to the development of distal and mesial
23
24 marginal ridges on the lingual aspect of the crown. Hrdlička (1920) noted that Asians and
25
26 American Indians often had well-developed marginal ridges while American Whites and Blacks
27
28 showed ridges that were slight or absent altogether. To characterize geographic variation, he set
29
30 up a ranked classification that included absence, trace-shovel, semi-shovel, and marked shovel.
31
32 Dahlberg (1956) used this classification when he developed a set of standardized plaques for a
33
34 dozen tooth crown traits.
35
36
37
38

39
40 Although the Hrdlička/Dahlberg scale was used extensively in dental anthropology, it did
41
42 not capture the true nature of the shoveling distribution. In Pima Indians, for example, semi- and
43
44 marked shoveling was over 80%. The distribution would be 1% absent, 9% trace, and 90%
45
46 semi- and marked shovel, far removed from a normal distribution. When Scott (1973) set up a
47
48 classification that included absence and seven degrees of trait presence, the distribution for
49
50 shoveling expression assumed normality, evident even through the use of ranks (cf., Scott 2008;
51
52 Scott and Turner 1997).
53
54
55
56
57
58
59
60

1
2
3 Traditionally, when researchers observed marginal ridges in a forensic case, they would
4 note the individual had shoveling. This general observation could lead to erroneous conclusions
5 because the presence of shoveling is not the key observation. Many people around the globe
6 exhibit lingual marginal ridges on their incisors. The key observation is *degree* of expression.
7 For example, Europeans and Sub-Saharan Africans frequently exhibit shoveling but expression
8 mostly takes the form of grades 1 and 2, and less often grade 3. Grades 4-7 are almost never
9 observed in these two groups, but these pronounced grades are 30-40% in East Asians and
10 American Indians. The point is that it is not the *presence* of the trait that distinguishes ancestry,
11 but the *grade* of trait expression.
12
13
14
15
16
17
18
19
20
21
22
23

24 One question that dental morphologists contend with is which tooth or group of teeth to
25 include in a characterization of shoveling. Shoveling is expressed on all upper and lower
26 incisors. Some feel it is also manifest on the canines but the essential ridges of the upper and
27 lower canines ameliorate the expression of the lingual marginal ridges. Shoveling is highly
28 symmetrical between antimeres and also shows significant correlations between UI1¹, UI2, LI1,
29 and LI2 (Scott 1977). The general practice is to use key teeth, or those that are defined as the
30 most stable in each tooth class, to avoid the problem of interdependent variables. In describing
31 human tooth districts, Dahlberg (1945) noted that, with few exceptions (i.e., LI1), the key tooth
32 in a tooth district in terms of size, morphology, and number was the most mesial member (e.g.,
33 UI1 rather than UI2; UM1 rather than UM2 or UM3). For that reason, UI1 is used as the key
34 tooth for scoring shoveling.
35
36
37
38
39
40
41
42
43
44
45
46
47
48
49

50 For most other variables, the key tooth in a district is the one employed in characterizing
51 geographic variation (e.g., Carabelli's trait UM1, cusp 5 UM1; cusp 6 LM1, cusp 7 LM1). The
52

53
54
55 ¹ In this paper, and by convention, U=upper, L=lower, I=incisor, C=canine, P=premolar, M=molar, and number
56 refers to tooth position. For example, UI1 refers to the upper first incisor.
57

1
2
3 exceptions to this rule are traits that show little variation on the key tooth (e.g., UM1 hypocone,
4 LM1 groove pattern, UM1 root number). In such instances, trait frequencies for the second
5 molar are used. Third molars are highly variable for crown and root structures, so these teeth are
6 generally avoided for morphological comparisons. There is, however, one exception: pegged-
7 reduced-missing UM3. Third molars are often reduced in size or lost altogether and this variable
8 shows patterned geographic variation. It is more common in Asian and Asian-derived
9 populations (15-35%) but is rare in Sub-Saharan Africans and Australo-Melanesians (ca. 5%).

10 11 12 13 14 15 16 17 18 19 20 1.2. Selection of variables for rASUDAS

21
22 The alpha version of rASUDAS was based on 17 variables listed in Appendix 1 of Scott
23 and Turner (Scott and Turner 1997). In that appendix, all traits were broken down into two
24 categories (e.g., absent and present, or presence frequencies at and above a certain breakpoint).
25 For the beta version of the application, some traits on that list were considered too rare (e.g.,
26 premolar odontomes, Bushman canine) or were correlated with other variables on the list (e.g.,
27 double shoveling correlated with shoveling; 4-cusped LM1 correlated with 4-cusped LM2), and
28 were therefore removed from the beta version. Other traits were added to the beta version (cusp
29 5 UM1; multiple lingual cusps LP2; UP1 root number), bringing the total number of traits to 21.
30 In addition, four traits that show a wide range of variation were broken down into finer
31 categories than 0 or +. These traits included UI1 shoveling (0-1, 2-3, 4+), UM2 hypocone (0-1,
32 2-3, 4+), UM1 Carabelli's trait (0-1, 2-4, 5+), and the LM1 protostylid (0, 1, 2+). Trait
33 classifications and standards are described in Turner et al. (1991) and the forthcoming guidebook
34 by Scott and Irish (2017).
35
36
37
38
39
40
41
42
43
44
45
46
47
48
49
50
51

52 1.3. Reference data and standards for scoring traits

53
54
55
56
57
58
59
60

1
2
3 Despite the fact that Hefner et al. (2012) had access to and reference Scott and Turner
4 (1991), they nonetheless question the utility of dental morphology until there is sufficient
5
6 reference data on world populations and standardized protocols for scoring crown and root traits.
7
8 They also note the need for more rigorous statistics that can be used with categorical data, an
9
10 issue that is addressed in the methods section.
11
12
13
14

15 As to the need for reference data and protocols for scoring traits, these have been around
16
17 for two decades. The appendix from Scott and Turner (1997) has trait frequencies for 21 world
18
19 populations based on over 30,000 individuals. Most of the data were collected by C.G. Turner II
20
21 with African data provided by J.D. Irish (1993). The only significant geographic omission was
22
23 South Asia (i.e., India, Pakistan). As for standardized protocol, the paper by Turner et al. (1991)
24
25 provides descriptions associated with over two dozen standard plaques developed at Arizona
26
27 State University across a two decade period (ca. 1970-1991). Over 400 sets of standard plaques
28
29 distributed to researchers throughout the world have been used in countless theses and research
30
31 papers.
32
33
34
35
36

37 Regarding the source of dental data, we grant that this can be improved with additional
38
39 observations on recent populations throughout the world. For the time being, however, we can
40
41 evaluate proof of concept using dental data from the extensive archaeologically-derived
42
43 populations from throughout the world. Regarding standards for scoring crown and root traits,
44
45 we strongly encourage the addition of new variables to the list already incorporated into
46
47 ASUDAS. However, we currently have well-developed and widely used standards for the 21
48
49 crown and root traits used in rASUDAS, more than sufficient to evaluate the potential of dental
50
51 morphology for ancestry estimation.
52
53
54
55
56
57
58
59
60

1
2
3 In the last paragraph of Scott and Turner (1997:317), the authors noted: “The geographic
4 differences in dental trait frequency and expression are often pronounced. When these
5 differences are assessed through advanced methods of classification (e.g., discriminant function
6 analysis, Bayes’ theorem, neural networks), it will be possible to transcend educated guesses and
7 calculate the probability that an individual belonged to a particular ethnic group.”
8
9
10
11
12
13

14 15 **2. Application**

16 17 2.1. Distance matrix and cluster analysis

18
19 For the alpha version of rASUDAS, 17 regional groups from the Scott and Turner (1997)
20 appendix were used for individual assignment. Although it would be ideal for classifications to
21 be that fine-tuned, it is not reasonable to distinguish Polynesians from Southeast Asians,
22 Australians from Melanesians, etc. To arrive at a more manageable number of categories, Nei’s
23 distance matrix was computed using each crown and root trait. From these distances, a
24 hierarchical clustering tree was created using UPGMA algorithm with complete linkage. Based
25 on a visual inspection of the clustering tree, seven biogeographic population clusters were
26 defined: American Arctic & Northeast Siberia, North & South American Indian, East Asia,
27 Southeast Asia & Polynesia, Australo-Melanesia & Micronesia, Sub-Saharan Africa., and
28 Western Eurasia (Figure 1).
29
30
31
32
33
34
35
36
37
38
39
40
41
42
43
44
45
46

47 2.2. World variation in dental morphology for seven major groups

48
49 The crown and root trait frequencies for 21 variables in seven major geno-geographic
50 groups are shown in Table 1. The pattern of variation exhibited by each is described briefly
51 below.
52
53
54
55
56
57
58
59
60

2.2.1. UI1 winging

Bilateral winging is most common in American Indians (50%), followed by Asian and Asian-derived groups (20-25%). It is less common in Australo-Melanesians (14%) and is relatively rare in Western Eurasians and Sub-Saharan Africans (3-6%).

2.2.2. UI1 Shoveling

Broken down into three categories, shoveling is most common in American Indians. It is also common in East Asians and the American Arctic but expression is less pronounced in these groups. Southeast Asians and Australo-Melanesians show generally similar frequencies; for both, 4+ expressions are much lower than for American Indians and East Asians. Although 4+ grades are rare in Sub-Saharan Africans and Western Eurasians, the former have a lower frequency of 0+1 shoveling and more 2+3 shoveling. This trait remains one of the single most useful for discerning ancestry but grades must be taken into consideration.

2.2.3. UI2 Interruption grooves

These grooves are most common in East Asian and derived populations with frequencies between 40 and 60%. They are moderate in Western Eurasians and Southeast Asians (30-35%). They are less frequent in Australo-Melanesians (20%) and rarest in Africans (8%).

2.2.4. UM2 hypocone

The greatest amount of hypocone reduction (0+1 grades) is shown by Western Eurasians (25%). East Asian and derived populations are intermediate with frequencies of 10-15%. The least amount of hypocone reduction is shown by Australo-Melanesians, Southeast Asians, and Africans (2-8%). Pronounced hypocones (4+) are also in highest frequency in these three groups.

2.2.5. UM1 Carabelli's trait

For absent and trace expressions (0+1), Asian and Asian-derived populations have the highest frequencies, led by the American Arctic & Northeast Siberia (85%). For pronounced expressions (5+), Europeans have the highest frequency (26%) and Native Americans the lowest (3%). Other Asian and Pacific populations have frequencies for grades 5+ between 14 and 18%.

2.2.6. UM1 cusp 5

This trait shows similar frequencies throughout the world (15-30%), with one exception, Australo-Melanesia (60%). It is slightly less common in Europeans (15%) but not markedly so.

2.2.7. UM1 enamel extensions

One of the few traits noted by forensic anthropologists (e.g., Birkby et al. 2008; Hurst 2012; Rhine 1990) as useful for ancestry estimation, enamel extensions are rare in Western Eurasians and Africans (1-2%) and slightly more common in Australo-Melanesians (7%). The highest frequencies are in East Asian and derived American populations (40-45%), with slightly lower frequencies for Southeast Asia (27%).

2.2.8. LP2 multiple lingual cusps

Two or three lingual cusps is a common condition (65-80%) in most populations of the world. The exceptions are the two New World groups with frequencies around 40%.

2.2.9. LM2 groove pattern

Most world populations show the Y pattern on LM2 between 25 and 30% of the time. The exceptions are American Indians with the lowest frequency (10%) and Africans with the highest frequency (50+%).

2.2.10. 4-cusped LM2

The loss of the fifth cusp on the lower second molar is a hallmark of the Western Eurasian dentition (75%). A 4-cusped LM2 is rare in Native American populations (5-10%) and intermediate for all other world groups (25-35%).

2.2.11. LM1 cusp 6

Cusp 6 is relatively common in all Asian and Pacific populations (40-55%). The trait is relatively rare in Western Eurasian and African populations (5-15%).

2.2.12. LM1 cusp 7

This variable shows a distinct pattern of variation. It is rare (4-7%) in all world populations with one exception. Sub-Saharan Africans have the highest frequency of this trait in the world (33%). One in three Africans exhibit this trait while one of twenty exhibit the trait in all other populations.

2.2.13. LM1 protostylid

Positive (2+) expressions of the protostylid are uncommon in all world populations with the highest frequency in East Asians (11%). Buccal pits (score of 1) are most common in American Indians (32%), followed by Asian populations (15-25%). These pits are least common in Australo-Melanesians, Africans, and Western Eurasians (6-10%).

2.2.14. LM1 deflecting wrinkle

The highest frequencies of this trait are for Native American populations (55-65%), followed by all Asian and Pacific populations (25-35%). It is relatively infrequent in Africans and Western Eurasians (5-12%).

2.2.15. UP1 root number

Africans and Western Eurasians have the highest frequency of 2 and 3 rooted UP1 (50-65%). Asian and Pacific populations fall in the 25-35% range. Native Americans show the greatest amount of root fusion, as 2 and 3 rooted UP1 are relatively rare in these groups (5-15%).

2.2.16. UM2 root number

Africans have the highest frequency of 3-rooted UM2 (80%) while American Arctic & Northeast Siberia have the lowest frequency (38%). Other world groups fall in the middle at 55-65%.

2.2.17. LC root number

Although a relatively rare trait throughout the world, it is one of the few variables that sets Europeans apart from other populations. The frequency in table 1 is 6.1% but the trait occurs consistently in Europeans and can get up to 10%. This finding is noteworthy because Asian and Pacific populations rarely have a frequency above 1%. Africans assume an intermediate position with a frequency around 4%.

2.2.18. LP1 Tomes root

This accessory root is uncommon in all world populations. It is around 2% in American Arctic groups and 11% in Europeans. All other groups fall between 15-20%.

2.2.19. 3-rooted LM1

This accessory root is most common in East Asia and the American Arctic (20%) followed by Southeast Asia (10%). It is rare in Native Americans, Africans, and Australo-Melanesians (3-6%) and exceptionally rare in Europeans (<1%).

2.2.20. LM2 root number

1
2
3 Most world populations have 1-rooted LM2 frequencies of 25-30%. The exceptions are
4
5 Australo-Melanesians (12%) and Africans (6%) who show the least amount of root fusion.
6
7

8 2.2.21. Pegged-reduced-missing UM3 9

10
11 The highest frequencies of reduced and lost UM3 are in East Asia and the American Arctic (25-
12
13 35%). American Indians, Western Eurasians, and Southeast Asians are intermediate at 15-20%.
14
15 The lowest frequencies of UM3 loss and reduction are Africans and Australo-Melanesians (5-
16
17 6%).
18
19

20 2.3. Naïve Bayes classification algorithm 21 22

23
24 The naïve Bayes classification algorithm was used to calculate the probability that an
25
26 individual exhibiting a certain suite of morphological traits would be assigned to a particular
27
28 geographic group. The naïve Bayes classifier is a simple probabilistic model that uses Bayes
29
30 theorem with the strong assumption of independence (Fielding 2007). That is, it assumes the
31
32 presence or absence of a trait is not related to the presence or absence of any other trait. Such an
33
34 assumption is called conditional independence. This modelling assumption offers a dramatic
35
36 simplification: Individual class-conditional marginal density of features can be estimated
37
38 separately using a one-dimensional kernel density estimator or any distribution model
39
40 appropriate for continuous data. For discrete predictors, class-conditional probability tables can
41
42 be obtained using a histogram estimator (Hastie et al. 2009). All analyses were conducted using
43
44 the free statistical package R (R Core Team 2013).
45
46
47
48
49

50 For any given individual, the posterior probabilities for assignment to one of the seven
51
52 groups always adds to 1.0. Although the probability for assigning an individual to one of seven
53
54 groups would never be 1.0, there are some suites of characteristics that would produce a
55
56
57
58
59
60

1
2
3 probability of 0.00 for geographic assignment. For example, if an individual had bilateral
4 winging, grade 4 shoveling, and LM1 cusp 6, the probability that individual was African or
5 European would be 0.000. To reverse that, if an individual had no winging, grade 0-1 shoveling,
6 and no cusp 6, the posterior probabilities would be about 0.40 for both African and European,
7 with the remaining 0.20 divided among the five Asian, Pacific, and New World populations. A
8 trial case for an individual that exhibited no crown traits yields a probability of 0.926 Western
9 Eurasian, 0.050 African, and less than 0.001 for the five Asian and Asian derived groups. If an
10 individual exhibited all crown traits, the probabilities would be 0.589 for East Asians, 0.278 for
11 American Indians, 0.128 for Southeast Asians-Polynesians, and 0.000 for Western Eurasians and
12 Africans.
13
14
15
16
17
18
19
20
21
22
23
24
25
26
27
28
29
30

31 **3. Test of application**

32 3.1. Validation

33
34
35 To test the applicability of the model a random sample of 150 individuals from the
36 Turner dataset were chosen and input into the program. Such a test was justified as the program
37 is based on population frequency, not individual data. The goal of this test was to evaluate how
38 an individual of known ancestry and group assignment would classify using these summary data.
39 Based on the random sample, the overall accuracy of the model in predicting group assignment is
40 0.518 (95% confidence interval 0.432-0.603). The confusion matrix is presented in Table 2,
41 which shows group classification. The summary results are in Table 3, outlining the sensitivity
42 and the positive predictive value for each group. It is clear from these results that the Southeast
43
44
45
46
47
48
49
50
51
52
53
54
55
56
57
58
59
60

1
2
3 Asia and Polynesia group is consistently misclassifying, particularly with the East Asian and
4
5 Western Eurasian groups.
6

7
8 Based on the results of this test, the seven-group model was re-evaluated and a second
9
10 clustering analysis was conducted. Based on the results of the Nei's distance matrix and the
11
12 hierarchical cluster analysis (Figure 2), the seven groups were further grouped into four groups:
13
14 1) Western Eurasia; 2) Sub-Saharan Africa; 3) Australo-Melanesia and Micronesia, Southeast
15
16 Asia and Polynesia; and 4) American Arctic and Northeast Asia, East Asia, and American
17
18 Indian. Model accuracy for four groups is 0.667 (95% confidence interval 0.582 – 0.744).
19
20 Summary results are provided in Table 4. This clustering of groups provides better overall
21
22 classifications and resolves the problem of misclassification with the Southeast Asia and
23
24 Polynesia group.
25
26

27
28 A consideration was also given to the standard three-group model that is commonly
29
30 employed by forensic anthropologists (i.e., Africa, Asia, and Europe). Therefore, a final test was
31
32 run with only this three-group classification in which reference samples from East Asia, Sub-
33
34 Saharan Africa, and Western Eurasia were used. The overall accuracy of this model was 0.727
35
36 (95% confidence interval 0.604 – 0.830). The summary results are listed in Table 5.
37
38
39
40
41
42
43
44

45 3.2. Discussion of Blind Test Results

46
47 The model is successful at predicting group assignment, and appears to perform better
48
49 when there are fewer groups, which is to be expected. It is worth discussing here the
50
51 misclassification of the Southeast Asia and Polynesian group in the seven-group analysis. This
52
53 finding is likely related to the differences in Sinodonty and Sundadonty as described by
54
55
56
57
58
59
60

1
2
3 Turner(1990). The Sinodont dental complex is found in East Asia and represents a suite of
4 specialized traits (e.g., shoveling, enamel extensions, deflecting wrinkle, 3-rooted lower molars,
5 4+ cusped lower molars, and missing-peg-reduced UM3). Whereas the Sundadont pattern is in
6 Southeast Asia and is a conservative pattern with lower grades of these traits. Individuals from
7 Southeast Asia and Polynesia are misclassifying as either other Asian groups (individuals who
8 may tend towards a Sindont pattern) or as Western Eurasians (individuals with a more Sundadont
9 pattern that lack many of the traits seen in other groups). Much of this is ameliorated when
10 overall group number is reduced (from seven to four).

11
12 In these tests we did not differentiate between male and female individuals, as the rate of
13 sexual dimorphism is reportedly low in dental morphology (e.g., Garn et al. 1966; Gašperšič
14 1994; Harris 2007; Scott 1980 ; Turner 1967). There is, however, one trait that does appear to
15 consistently show sexual dimorphism: the distal accessory ridge of the canine (Kaul and Prakash
16 1981; Scott 1977). As this trait is not one of the main traits considered in this analysis, the
17 reference sample was not further divided by sex.

38 **4. Ramifications to forensic anthropology**

40 4.1. rASUDAS in a forensic context

41
42 Within forensic anthropology, there are many methods to estimate ancestry. The more
43 commonly used are based on craniometrics (Giles and Elliot 1962; Jantz and Ousley 2005) and
44 cranial morphoscopies (Hefner 2009; Hefner and Ousley 2014; Rhine 1990). Many other
45 skeletal elements have been studied as well, including the femur (Craig 1995; Gilbert 1976;
46 Stewart 1962; Tallman and Winburn 2015; Wescott 2005), the metatarsals (Smith 1997), the
47 hyoid (Kindschuh et al. 2012), the vertebrae (Duray et al. 1999; Marino 1997), the sagittal suture

1
2
3 (Mann et al. 2014), the mandible (Berg 2014), tooth size (Harris and Foster 2015; Kenyhercz et
4 al. 2014; Pilloud et al. 2014), and postcranial measurements (Holliday and Falsetti 1999). While
5
6 many of these methods have proven effective at differentiating ancestral groups – there is often
7
8 little focus on biological development or the evolutionary reasons why various skeletal traits
9
10 differentiate populations. That is, some of these traits do not have documented heritabilities and
11
12 it is unclear what is driving population similarities or dissimilarities (e.g., genes, culture,
13
14 environment).

15
16
17
18
19 As previously discussed, there are a few methods available to the practicing forensic
20
21 anthropologist that utilize dental morphology (i.e., Edgar 2005; 2013; Irish 2015), although, they
22
23 are somewhat limited in their application. We propose there are several advantages to
24
25 incorporating dental morphology into the biological profile and that they are not subject to some
26
27 of the shortcomings of other skeletal traits. First, there has been extensive work documenting the
28
29 heritability and genetics of dental morphology (Berry 1978; Biggerstaff 1973; Harris 1977; Hughes
30
31 et al. 2016; Kimura et al. 2009; Nichol 1990; Park et al. 2012; Saheki 1958; Scott 1973; Scott and
32
33 Potter 1984; Sharma 1992; Škrinjarić et al. 1985; Townsend 1992; Townsend et al. 2009; Zhao et al.
34
35 2000; Zoubov and Nikityuk 1978). These traits show little influence from the environment and are
36
37 therefore strong indicators of inherited population variation. Second, teeth are often well-preserved
38
39 in forensic contexts, even in cases where remains are highly fragmentary, burned, or otherwise
40
41 affected by trauma. Finally, the development of dental morphology is directed by distinct biological
42
43 processes and genes from other parts of the skeleton that are used for ancestry estimation (e.g.,
44
45 craniometrics and cranial morphoscopies). Therefore, the incorporation of dental morphology as part
46
47 of the biological profile provides a more robust view of human variation and population history.
48
49
50
51

52
53 While extensive work has been done to document secular change in craniometrics (e.g.,
54
55 Jantz 2001; Moore-Jansen 1989; Spradley 2006; Wescott and Jantz 2005), odontometrics (e.g.,
56
57

1
2
3 Ebeling et al. 1973; Garn et al. 1968; Harris et al. 2001; Kieser et al. 1987), and cranial
4
5 morphoscopies (e.g., Vitek 2012), the role of time on population variation in dental morphology
6
7 is less understood. The current version of rASUDAS has a reference sample that is primarily
8
9 archaeological and spans several thousand years, which has the potential to limit the application
10
11 in a medico-legal context. However, some research suggests that secular change is minimal in
12
13 the expression of dental morphological population variation (Scott 1994). Our ultimate goal is to
14
15 expand the reference sample to include data on a range of modern individuals throughout the
16
17 United States and the world that would be more representative of modern forensic casework.
18
19 The need to update the reference sample was illustrated in a recent paper by George and Scott
20
21 (2016) employed rASUDAS to estimate the ancestry of Albuquerque Hispanics. These
22
23 individuals overwhelmingly classified as Western Eurasians (69%), which illustrates the need for
24
25 an increased reference sample with various population groups from the United States
26
27 represented. As the modern reference sample grows, the Christy G. Turner, II sample could
28
29 eventually be transitioned into an archaeological reference sample, much like the Howells
30
31 database in Fordisc.
32
33
34
35
36

37
38 In its current form, rASUDAS can complement other methods in the estimation of
39
40 ancestry. However, until more research is done on secular change in dental morphology and
41
42 how this may affect interpretations, we do not recommend it be used as the *sole* method of
43
44 ancestry estimation, at least not in a modern context. If the material appears to be archaeological
45
46 in nature, rASUDAS can certainly be applied.
47
48
49
50
51
52
53

54 **5. Conclusions**

55
56
57
58
59
60

1
2
3 While we recognize the need to augment the reference sample, the current form of
4
5 rASUDAS has illustrated the applicability of dental morphology in ancestry estimation. The
6
7 incorporation of dental morphological analyses into forensic anthropological casework has
8
9 several advantages: 1) there is a robust body of literature outlining the heritability, development,
10
11 evolution, and population history of dental morphology, which allows for accurate
12
13 interpretations of results, 2) teeth are not subject to plastic change over one's lifetime, and 3)
14
15 teeth are often well-preserved when other parts of the skeleton may not be. Further, dental
16
17 morphology represents a different aspect of the genotype and is the result of distinct evolutionary
18
19 relationships that go beyond just the mid-face and the shape of the cranial vault. The ability to
20
21 incorporate more information from the skeleton when assessing ancestry can prove to be critical
22
23 in creating accurate ancestry estimates. We therefore argue that dental morphology couched in a
24
25 statistical framework can become an integral part of the methods regularly used by forensic
26
27 anthropologists in ancestry estimation. Ultimately, the incorporation of more aspects of the
28
29 phenotype and genotype can lead to overall more accurate estimations of ancestry.
30
31
32
33
34
35
36
37
38
39
40
41
42
43
44
45
46
47
48
49
50
51
52
53
54
55
56
57
58
59
60

References

- 1
2
3
4
5
6 Berg, G, E. . Biological affinity and sex from the mandible utilizing multiple world populations.
7 in: Berg, GE, Ta'ala, SC eds., *Biological Affinity in Forensic Identification of Human Skeletal*
8 *Remains*, Boca Raton, FL, CRC Press; 2014:43-82.
9
- 10 Berg, GE, Ta'ala, SC, eds. *Biological Affinity in Forensic Identification of Human Skeletal*
11 *Remains*. CRC Press, Boca Raton, FL; 2015.
12
- 13 Berry, AC. Anthropological and family studies on minor variants of the dental crown. in: Bulter,
14 PM, Joysey, KA eds., *Development, function and evolution of teeth*, London, Academic Press;
15 1978:81-96.
16
- 17 Biggerstaff, RH. Heritability of the Carabelli cusp in twins. *Journal of Dental Research*.
18 1973;52:40-44.
19
- 20 Birkby, WH, Fenton, TW, Anderson, BE. Identifying Southwest Hispanics using nonmetric traits
21 and the cultural profile. *Journal of Forensic Sciences*. 2008;53:29-33.
22
- 23 Burns, KR. *Forensic Anthropology Training Manual*. Prentice-Hall, New Jersey; 1999.
24
- 25 Byers, S. *Introduction to Forensic Anthropology: A Textbook*. Allyn and Bacon, Boston, MA;
26 2002.
27
- 28 Craig, EA. Intercondylar shelf angle: a new method to determine race from the distal femur.
29 *Journal of Forensic Sciences*. 1995;40:777-782.
30
- 31 Dahlberg, AA. The changing dentition of man. *Journal of the American Dental Association*.
32 1945;32:676-690.
33
- 34 Dahlberg, AA. *Materials for the Establishment of Standards for Classification of Tooth*
35 *Characteristics, Attributes, and Techniques in Morphological Studies of the Dentition*. Zoller
36 Laboratory of Dental Anthropology, University of Chicago, Chicago; 1956.
37
- 38 Dirkmaat, DC, ed. *A Companion to Forensic Anthropology*. Wiley-Blackwell, Malden, MA;
39 2012.
40
- 41 Duray, S, Morter, H, Smith, F. Morphological variation in cervical spinous processes: potential
42 applications in the forensic identification of race from the skeleton. *Journal of Forensic*
43 *Sciences*. 1999;44:937-944.
44
- 45 Ebeling, CF, Ingervall, B, Hede-gård, B, Lewin, T. Secular changes in tooth size in Swedish
46 men. *Acta Odontologica Scandinavica*. 1973;31:141-147.
47
- 48 Edgar, HJH. Prediction of race using characteristics of dental morphology. *Journal of Forensic*
49 *Sciences*. 2005;50:269-273.
50
51
52
53
54
55
56
57
58
59
60

- 1
2
3 Edgar, HJH. Estimation of ancestry using dental morphological characteristics. *Journal of*
4 *Forensic Sciences*. 2013;58:S3-S8.
5
6 Edgar, HJH. Dental morphological estimation of ancestry in forensic contexts. in: Berg, GE,
7 Ta'ala, SC eds., *Biological Affinity in Forensic Identification of Human Skeletal Remains*, Boca
8 Raton, FL, CRC Press; 2015:191-208.
9
10 Edgar, HJH. *Dental Morphology: An Illustrated Manual*. Left Coast Press, Walnut Creek, CA; In
11 Press.
12
13
14 Fielding, A. *Cluster and Classification Techniques for the Biosciences*. Cambridge University
15 Press Cambridge, Cambridge; 2007.
16
17 Garn, S, Kerewsky, RS, Lewis, AB. Extent of sex influence on Carabelli's polymorphism.
18 *Journal of Dental Research*. 1966;45:1823.
19
20 Garn, SM, Lewis, AB, Walenga, A. Evidence for a secular trend in tooth size over two
21 generations. *Journal of Dental Research*. 1968;47:503.
22
23
24 Gašperšič, D. Some principles in the dental crown construction in permanent maxillary centrals
25 of Slovenians. *Journal of Oral Rehabilitation*. 1994;21:713-719.
26
27
28 George, RL, Scott, GR. *Tracing the origins of dental non-metric traits in New Mexican*
29 *Hispanics*, American Journal Of Physical Anthropology, 2016. 153.
30
31 Gilbert, BM. Anterior femoral curvature: its probable basis and utility as a criterion of racial
32 assessment. *American Journal Of Physical Anthropology*. 1976;7.
33
34
35 Giles, E, Elliot, O. Race identification from cranial measurements. *Journal of Forensic Sciences*.
36 1962;7:147-157.
37
38 Gregory, WK. *Origin and Evolution of the Human Dentition*. Williams and Wilkins Company,
39 Baltimore, Maryland; 1922.
40
41 Harris, EF. *Anthropologic and Genetic Aspects of the Dental Morphology of Solomon Islanders,*
42 *Melanesia*, Department of Anthropology, Arizona State University, Tempe, AZ, 1977.
43
44 Harris, EF. Carabelli's trait and tooth size of human maxillary first molars. *American Journal Of*
45 *Physical Anthropology*. 2007;132:238-246.
46
47 Harris, EF, Foster, CL. Size matters: discrimination between American Blacks and Whites,
48 males and females, using tooth crown dimensions. in: Berg, GE, Ta'ala, SC eds., *Biological*
49 *Affinity in Forensic Identification of Human Skeletal Remains*, Boca Raton, FL, CRC Press;
50 2015:209-238.
51
52
53 Harris, EF, Potter, RH, Lin, J. Secular trend in tooth size in urban Chinese assessed from two-
54 generation family data. *American Journal Of Physical Anthropology*. 2001;115:312-318.
55
56
57
58
59
60

1
2
3 Hastie, T, Tibshirani, R, Friedman, J. *The Elements of Statistical Learning*. Springer, New York,
4 NY; 2009.
5

6 Hefner, JT. Cranial nonmetric variation and estimating ancestry. *Journal of Forensic Sciences*.
7 2009;54:985-995.
8

9 Hefner, JT, Ousley, SD. Statistical classification methods for estimating ancestry using
10 morphoscopic traits. *Journal of Forensic Sciences*. 2014;59:883-890.
11

12 Hefner, JT, Ousley, SD, Dirkmaat, DC. Morphoscopic traits and the assessment of ancestry. in:
13 Dirkmaat, DC ed., *A Companion to Forensic Anthropology*, Malden, MA, Wiley-Blackwell;
14 2012:287-310.
15

16 Hinkes, MJ. Shovel-shaped incisors in human identification. in: Gill, G, Rhine, S eds., *Skeletal*
17 *Attribution of Race*, Albuquerque, NM, Maxwell Museum Anthropological Papers No. 4;
18 1990:21-26.
19

20 Holliday, TW, Falsetti, AB. A new method for discriminating African-American from European-
21 American skeletons using postcranial osteometrics reflective of body shape. *J Forensic Sci*.
22 1999;44:926-930.
23

24 Hrdlička, A. Shovel shaped teeth. *American Journal Of Physical Anthropology*. 1920;3:429-465.
25

26 Hughes, T, Townsend, G, Bockmann, M. An overview of dental genetics. in: Irish, JD, Scott, GR
27 eds., *A Companion to Dental Anthropology*, Malden, MA, Wiley & Sons, Inc.; 2016:124-141.
28

29 Hurst, CV. Morphoscopic Trait Expressions Used to Identify Southwest Hispanics. *Journal of*
30 *Forensic Sciences*. 2012;57:859-865.
31

32 Irish, JD. *Biological affinities of late Pleistocene through modern Africal aboriginal*
33 *populations: the dental evidence*, Department of Anthropology, Arizona State University,
34 Tempe, AZ., 1993.
35

36 Irish, JD. Dental nonmetric variation around the world: using key traits in populations to estimate
37 ancestry in individuals. in: Berg, GE, Ta'ala, SC eds., *Biological Affinity in Forensic*
38 *Identification of Human Skeletal Remains*, Boca Raton, FL, CRC Press; 2015:165-190.
39

40 Jantz, R. Cranial Change in Americans: 1850–1975. 2001.
41

42 Jantz, R, Ousley, S. *FORDISC 3: Computerized Forensic Discriminant Functions*. The
43 University of Tennessee, Knoxville; 2005.
44

45 Kaul, V, Prakash, S. Morphological features of the Jat dentition. *American Journal Of Physical*
46 *Anthropology*. 1981;54:123-127.
47

48 Kenyhercz, MW, Klales, AR, Kenyhercz, WE. Molar size and shape in the estimation of
49 biological ancestry: A comparison of relative cusp location using geometric morphometrics and
50 interlandmark distances. *American Journal Of Physical Anthropology*. 2014;153:269-279.
51

1
2
3 Kieser, JA. *Human Adult Odontometrics: The Study of Variation in Adult Tooth Size*. Cambridge
4 University Press, Cambridge; 1990.

5
6
7 Kieser, JA, Cameron, N, Groeneveld, HT. Evidence for a secular trend in the Negro dentition.
8 *Annals Of Human Biology*. 1987;14:517-532.

9
10 Kimura, R, Yamaguchi, T, Takeda, Y, Kondo, O, Toma, T, Haneji, K, Hanihara, T, Matsukura,
11 H, kawamura, S, Maki, K, Osawa, M, Ishida, H, Oota, H. A common variation in EDAR is a
12 genetic determinant of shovel-shaped incisors. *American Journal Of Human Genetics*.
13 2009;84:528-535.

14
15 Kindschuh, SC, Dupras, TL, Cowgill, LW. Exploring ancestral variation of the hyoid. *Journal of*
16 *Forensic Sciences*. 2012;57:41-46.

17
18 Komar, D, Buikstra, JE. *Forensic Anthropology: Contemporary Theory and Practice*. Oxford
19 University Press, Oxford; 2008.

20
21
22 Lasker, GW, Lee, MM. Racial traits in the human teeth. *Journal of Forensic Sciences*.
23 1957;2:401-419.

24
25 Mann, RW, Manabe, J, Byrd, JE, AhSam, S, Holland, TD, Tuamsuk, P. The sagittal suture as an
26 indicator of race and sex. in: Berg, GE, Ta'ala, SC eds., *Biological Affinity in Forensic*
27 *Identification of Human Skeletal Remains*, Boca Raton, FL, CRC Press; 2014:95-132.

28
29
30 Marino, EA. A pilot study using the first cervical vertebra as an indicator of race. *J Forensic Sci*.
31 1997;42:1114-1118.

32
33 Moore-Jansen, PH. *A multivariate craniometric analysis of secular change and variation among*
34 *recent North American populations*, University of Tennessee, Knoxville Ph. D Dissertation,
35 1989.

36
37
38 Nichol, CR. *Dental Genetics and Biological Relationships of the Pima Indians of Arizona*,
39 Unpublished PhD dissertation, Arizona State University, Tempe, AZ, 1990.

40
41 Park, J-H, Yamaguchi, T, Watanabe, C, Kawaguchi, A, Haneji, K, Takeda, M, Kim, Y-I,
42 Tomoyasu, Y, Watanabe, M, Oota, H, Hanihara, T, Ishida, H, Maki, K, Park, S-B, Kimura, R.
43 Effects of an Asian-specific nonsynonymous EDAR variant on multiple dental traits. *Journal of*
44 *Human Genetics*. 2012;57:508-514.

45
46 Pilloud, MA, Hefner, JT, Hanihara, T, Hayashi, A. The use of tooth crown measurements in the
47 assessment of ancestry. *Journal of Forensic Sciences*. 2014;59:1493-1501.

48
49
50 R Core Team. *R: A language and environment for statistical computing*. R Foundation for
51 Statistical Computing. ISBN 3-900051-07-0, URL <http://www.R-project.org>, Vienna, Austria;
52 2013.

53
54 Reichs, KJ, ed. *Forensic Osteology: Advances in the Identification of Human Remains*. Charles
55 C. Thomas Publisher, LTD., Springfield, Illinois; 1998.

1
2
3 Rhine, S. Non-metric skull racing. in: Gill, GW, Rhine, S eds., *Skeletal Attribution of Race: Methods for Forensic Anthropology*, Albuquerque, N.M., Maxwell Museum Anthropological
4 Papers No. 4; 1990:9-20.
5
6

7 Saheki, M. On the heredity of the tooth crown configuration studied in twins. *Acta Anatomica*
8 *Nipponica*. 1958;33:456-470.
9

10 Scott, GR. *Dental Morphology: A Genetic Study of American White Families and Variation in*
11 *Living Southwest Indians*, Unpublished PhD dissertation, Arizona State University, Tempe, AZ,
12 1973.
13
14

15 Scott, GR. Classification, sex dimorphism, association, and population variation of the canine
16 distal accessory ridge. *Human Biology*. 1977;49:453-469.
17

18 Scott, GR. Population variation of Carabelli's trait. *Human Biology*. 1980;52:63-78.
19

20 Scott, GR. Teeth and prehistory on Kodiak Island. in: Bray, TL, Killion, TW eds., *Reckoning*
21 *With the Dead: The Larsen Bay Repatriation and the Smithsonian Institution*, Smithsonian
22 *Institution Press, Washington, DC*, Washington, D.C., Smithsonian Institution Press; 1994:67-
23 74.
24
25

26 Scott, GR. Dental morphology. in: Katzenberg, A, Saunders, S eds., *Biological Anthropology of*
27 *the Human Skeleton*, New York, Wiley-Liss; 2008:265-298.
28

29 Scott, GR, Potter, RHY. An analysis of tooth crown morphology in American White twins.
30 *Anthropologie*. 1984;22:223-231.
31
32

33 Scott, GR, Turner, CG. *The Anthropology of Modern Human Teeth*. Cambridge University Press,
34 Cambridge; 1997.
35

36 Scott, GR, Irish, JD. *Human Crown and Root Morphology: The Arizona State University Dental*
37 *Anthropology System*. Cambridge University Press, Cambridge; 2017.
38

39 Scott, GR, Pilloud, MA. Dental morphology. in: Katzenberg, A, Saunders, S eds., *Biological*
40 *Anthropology of the Human Skeleton*, New York, Wiley-Liss; In press.
41
42

43 Scott, GR, Maier, C, Heim, K. Identifying and recording key morphological (nonmetric) crown
44 and root traits. in: Irish, JD, Scott, GR eds., *A Companion to Dental Anthropology*, Hoboken,
45 N.J., John Wiley & Sons, Inc; 2015:245-264.
46

47 Sharma, JC. Dental morphology and odontometry of twins and the heritability of dental
48 variation. in: Lukacs, JR ed., *Culture, Ecology and Dental Anthropology*, Delhi, India, Kamla-
49 Raj Enterprises; 1992:49-60.
50

51 Škrinjarić, I, Slaj, M, Lapter, V, Muretic, Z. Heritability of Carabelli's trait in twins. *Collegium*
52 *Antropologicum*. 1985;9:177-181.
53
54
55
56
57
58
59
60

1
2
3 Smith, SL. Attribution of foot bones to sex and population groups. *Journal of Forensic Sciences*.
4 1997;42:186-195.
5

6 Spradley, MK. *Biological anthropological aspects of the African diaspora; geographic origins,*
7 *secular trends, and plastic versus genetic influences utilizing craniometric data*, Department of
8 Anthropology, University of Tennessee, Knoxville, Knoxville, TN, 2006.
9

10 Stewart, TD. Anterior femoral curvature: its utility for race identification. *Human Biology*.
11 1962;34.
12
13

14 Tallman, SD, Winburn, AP. Forensic Applicability of Femur Subtrochanteric Shape to Ancestry
15 Assessment in Thai and White American Males. *Journal of Forensic Sciences*. 2015;60:1283-
16 1289.
17

18 Townsend, GC. Genetic and environmental contributions to morphometric dental variation. in:
19 Lukacs, JR ed., *Culture, Ecology and Dental Anthropology*, Delhi, India, Kamla-Raj Enterprises;
20 1992:61-72.
21
22

23 Townsend, GC, Hughes, T, Luciano, M, Bockmann, M, Brook, A. Genetic and environmental
24 influences on human dental variation: A critical evaluation of studies involving twins. *Archives*
25 *of Oral Biology*. 2009;54, Supplement 1:S45-S51.
26

27 Turner, CG. *The Dentition of Artic Peoples*, Department of Anthropology, University of
28 Wisconsin, Madison, 1967.
29
30

31 Turner, CG. Major features of Sundadonty and Sinodonty, including suggestions about East
32 Asian microevolution, population history, and late Pleistocene relationships with Australian
33 aboriginals. *American Journal Of Physical Anthropology*. 1990;82:295-317.
34

35 Turner, CG, Nichol, CR, Scott, GR. Scoring procedures for key morphological traits of the
36 permanent dentition: the Arizona State University dental anthropology system. in: Kelley, MA,
37 Larsen, CS eds., *Advances in Dental Anthropology*, New York, Wiley-Liss; 1991:13-31.
38
39

40 Vitek, CL. *A Critical Analysis of the Use of Non-Metric Traits for Ancestry Estimation among*
41 *Two North American Population Samples*, Department of Anthropology, University of
42 Tennessee, Knoxville, Knoxville, TN, 2012.
43

44 Wescott, DJ. Population variation in femur subtrochanteric shape. *Journal of Forensic Sciences*.
45 2005;50:286-293.
46

47 Wescott, DJ, Jantz, RL. Assessing craniofacial secular change in American Blacks and Whites
48 using geometric morphometry. in: Slice, DE ed., *Modern Morphometrics in Physical*
49 *Anthropology*, Boston, MA, Springer US; 2005:231-245.
50
51

52 Zhao, Z, Weiss, KM, Stock, DW. Development and evolution of dentition patterns and their
53 genetic basis. in: Teaford, M, Smith, MM, Ferguson, MWJ eds., *Development, function and*
54 *evolution of teeth*, Cambridge, Cambridge University Press; 2000:152-172.
55
56
57
58
59
60

1
2
3
4
5
6
7
8
9
10
11
12
13
14
15
16
17
18
19
20
21
22
23
24
25
26
27
28
29
30
31
32
33
34
35
36
37
38
39
40
41
42
43
44
45
46
47
48
49
50
51
52
53
54
55
56
57
58
59
60

Zoubov, AA, Nikityuk, BA. Prospects for the application of dental morphology in twin type analysis. *Journal Of Human Evolution*. 1978;7:519-524.

For Review Only

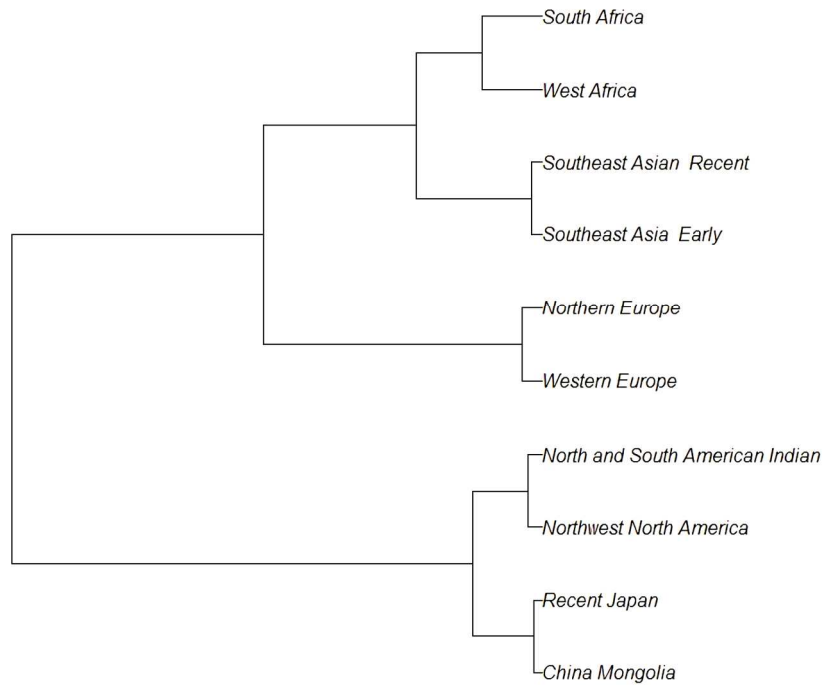


Figure 1. Results of Nei's distance matrix and hierarchical cluster analysis of original 17 groups that were further sub-divided into the following seven biogeographic groups.

601x551mm (72 x 72 DPI)

1
2
3
4
5
6
7
8
9
10
11
12
13
14
15
16
17
18
19
20
21
22
23
24
25
26
27
28
29
30
31
32
33
34
35
36
37
38
39
40
41
42
43
44
45
46
47
48
49
50
51
52
53
54
55
56
57
58
59
60

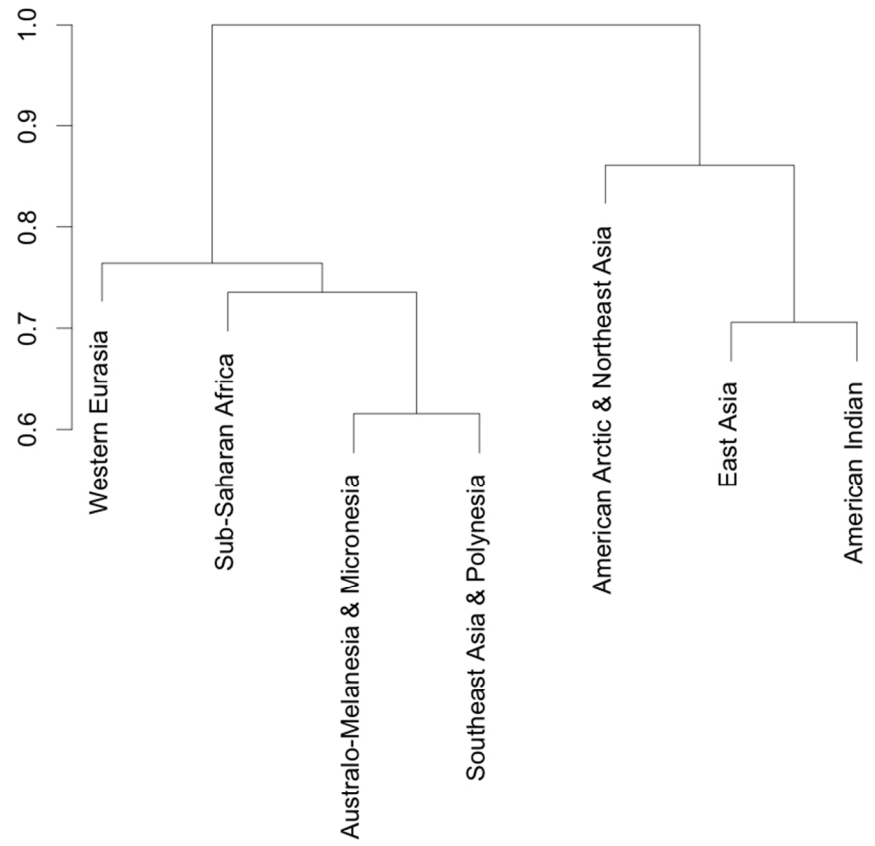


Figure 2. Results of Nei's distance matrix and hierarchical cluster analysis of original 7 groups that were further sub-divided into the following four biogeographic groups.

338x381mm (72 x 72 DPI)

Table 1. Trait frequencies used in rASUDAS application to compute posterior probabilities via naïve Bayes theorem.

Trait and tooth	Rank	American Arctic & NE Siberia	Australo-Melanesia & Micronesia	East Asia	American Indian	Southeast Asia & Polynesia	Sub-Saharan Africa	Western Eurasia
Winging UI1	0	0.773	0.860	0.746	0.500	0.773	0.967	0.938
	1+	0.227	0.140	0.254	0.500	0.227	0.033	0.062
Shoveling UI1	0 + 1	0.027	0.370	0.026	0.005	0.336	0.443	0.817
	2 + 3	0.811	0.606	0.654	0.542	0.589	0.558	0.181
	4+	0.162	0.024	0.319	0.453	0.074	0.000	0.002
Interruption grooves UI2	0	0.376	0.804	0.587	0.490	0.703	0.916	0.629
	1+	0.624	0.196	0.413	0.510	0.297	0.084	0.371
Hypocone UM2	0+1	0.145	0.059	0.097	0.115	0.018	0.086	0.253
	2+3	0.612	0.210	0.320	0.417	0.200	0.167	0.255
	4+	0.243	0.731	0.583	0.468	0.692	0.747	0.492
Carabelli's trait UM1	0+1	0.845	0.606	0.690	0.620	0.647	0.460	0.450
	2+3+4	0.134	0.213	0.165	0.325	0.168	0.426	0.288
	5+	0.021	0.182	0.145	0.055	0.185	0.144	0.262
Cusp 5 UM1	0	0.824	0.415	0.809	0.833	0.705	0.725	0.853
	1+	0.176	0.585	0.191	0.167	0.295	0.275	0.147
Enamel extensions UM1	0+1	0.569	0.932	0.585	0.563	0.735	0.993	0.978
	2+3	0.431	0.068	0.415	0.437	0.265	0.007	0.022
Multiple lingual cusps LP2	0+1	0.604	0.253	0.300	0.602	0.191	0.333	0.371
	2+3	0.396	0.747	0.700	0.398	0.809	0.667	0.629
Groove pattern LM2	X and +	0.721	0.666	0.750	0.902	0.703	0.640	0.735
	Y	0.279	0.334	0.250	0.098	0.297	0.460	0.265
4-cusped LM2	5	0.943	0.647	0.697	0.914	0.679	0.744	0.254
	4	0.057	0.363	0.303	0.086	0.321	0.256	0.746
Cusp 6 LM1	0	0.525	0.586	0.633	0.449	0.521	0.890	0.935
	1+	0.475	0.414	0.367	0.551	0.479	0.110	0.065
Cusp 7 LM1	0	0.962	0.931	0.945	0.939	0.945	0.674	0.956
	1+	0.038	0.069	0.055	0.061	0.055	0.326	0.044

1
2
3
4
5
6
7
8
9
10
11
12
13
14
15
16
17
18
19
20
21
22
23
24
25
26
27
28
29
30
31
32
33
34
35
36
37
38
39
40
41
42
43
44
45
46
47

Protostylid LM1	0	0.815	0.928	0.758	0.621	0.843	0.891	0.901
	1	0.169	0.061	0.137	0.321	0.231	0.100	0.091
	2+	0.016	0.011	0.106	0.060	0.012	0.009	0.008
Deflecting wrinkle LM1	0+1+2	0.426	0.737	0.637	0.335	0.641	0.950	0.871
	3	0.574	0.263	0.363	0.665	0.359	0.050	0.129
UP1 root number	1	0.942	0.612	0.744	0.857	0.644	0.359	0.501
	2+3	0.058	0.388	0.256	0.143	0.356	0.641	0.499
UM2 root number	1+2	0.624	0.301	0.355	0.441	0.386	0.189	0.391
	3	0.376	0.699	0.645	0.559	0.614	0.812	0.609
LC root number	1	1.000	0.999	0.988	0.993	0.993	0.957	0.939
	2	0.000	0.001	0.012	0.007	0.007	0.043	0.061
Tomes root LP1	1+2+3	0.985	0.815	0.842	0.801	0.809	0.823	0.885
	4+	0.015	0.185	0.158	0.199	0.191	0.177	0.115
3-rooted LM1	1+2	0.773	0.967	0.803	0.934	0.899	0.963	0.995
	3	0.227	0.033	0.197	0.066	0.101	0.037	0.005
LM2 root number	2	0.686	0.871	0.700	0.672	0.722	0.943	0.752
	1	0.314	0.129	0.300	0.328	0.278	0.057	0.248
Pegged-reduced-missing UM3	0	0.786	0.936	0.641	0.842	0.792	0.950	0.835
	1	0.232	0.064	0.359	0.158	0.208	0.050	0.165

Table 2. Confusion matrix of group assignment using archaeological reference sample in 7 groups.

	Reference							TOTAL
	(1) American Arctic & Northeast Asia	(2) Australo-Melanesia & Micronesia	(3) East Asia	(4) American Indian	(5) Southeast Asia & Polynesia	(6) Sub-Saharan Africa	(7) Western Eurasia	
Predicted								
(1) American Arctic & Northeast Asia	10	2	0	2	4	0	0	18
(2) Australo-Melanesia & Micronesia	1	11	0	4	2	0	0	18
(3) East Asia	2	1	12	1	6	4	5	31
(4) American Indian	3	2	2	9	0	0	1	17
(5) Southeast Asia & Polynesia	1	3	0	0	4	2	3	13
(6) Sub-Saharan Africa	0	0	4	0	2	11	4	21
(7) Western Eurasia	0	0	2	4	5	1	20	32
TOTAL	17	19	20	20	23	18	33	150

Table 3. Summary results of 7-group assignment using archaeological test sample indicating sensitivity and positive predictive value with a 95% confidence interval

Group	Sensitivity (95% CI)	PPV (95% CI)
(1) American Arctic & Northeast Asia	0.588 (0.329, 0.816)	0.556 (0.308, 0.785)
(2) Australo-Melanesia & Micronesia	0.625 (0.354, 0.848)	0.345 (0.179, 0.543)
(3) East Asia	0.467 (0.213, 0.734)	0.467 (0.213, 0.734)
(4) American Indian	0.579 (0.335, 0.797)	0.611 (0.357, 0.827)
(5) Southeast Asia & Polynesia	0.174 (0.050, 0.388)	0.308 (0.091, 0.614)
(6) Sub-Saharan Africa	0.611 (0.357, 0.827)	0.524 (0.298, 0.743)
(7) Western Eurasia	0.606 (0.421, 0.771)	0.714 (0.513, 0.868)

Table 4. Summary results of 4-group assignment using archaeological test sample indicating sensitivity and positive predictive value with a 95% confidence interval

Group	Sensitivity (95% CI)	PPV (95% CI)
(1) American Arctic & Northeast Asia East Asia American Indian	0.902 (0.786, 0.967)	0.821 (0.696, 0.911)
(2) Australo-Melanesia & Micronesia Southeast Asia & Polynesia	0.487 (0.324, 0.652)	0.463 (0.307, 0.626)
(3) Sub-Saharan Africa	0.556 (0.308, 0.785)	0.588 (0.329, 0.816)
(4) Western Eurasia	0.576 (0.392, 0.745)	0.704 (0.498, 0.862)

Table 5. Summary results of 3-group assignment using archaeological test sample indicating sensitivity and positive predictive value with a 95% confidence interval

Group	Sensitivity (95% CI)	PPV (95% CI)
(1) East Asia	0.800 (0.519, 0.957)	0.800 (0.519, 0.957)
(2) Sub-Saharan Africa	0.778 (0.524, 0.936)	0.583 (0.366, 0.779)
(3) Western Eurasia	0.667 (0.482, 0.820)	0.815 (0.619, 0.937)