

1 **Insect temperature-body size trends common to laboratory,**  
2 **latitudinal and seasonal gradients are not found across altitudes**

3

4 **Curtis R. Horne<sup>a</sup>, Andrew. G. Hirst<sup>a,b\*</sup>, and David Atkinson<sup>c</sup>**

5

6 <sup>a</sup>School of Environmental Sciences, University of Liverpool, Liverpool, L69 3GP, United  
7 Kingdom.

8 <sup>b</sup>Centre for Ocean Life, National Institute for Aquatic Resources, Technical University of  
9 Denmark, Kavalergården 6, 2920, Charlottenlund, Denmark

10 <sup>c</sup>Institute of Integrative Biology, University of Liverpool, Liverpool, L69 7ZB, United Kingdom.

11

12 *\*Corresponding author: aghirst@liverpool.ac.uk*

13

14 **Running Title:** Altitude-size clines in insects

15 **Keywords:** Body size, plasticity, altitude, warming, arthropod, elevation

16

17 **Author Contributions**

18 CH, AGH and DA designed the study and wrote the paper. CH collected the data and  
19 performed the statistical analyses.

20

21

22 **ABSTRACT**

- 23 1. Body size affects rates of most biological and ecological processes, from individual  
24 performance to ecosystem function, and is fundamentally linked to organism fitness.  
25 Within species, size at maturity can vary systematically with environmental  
26 temperature in the laboratory and across seasons, as well as over latitudinal gradients.  
27 Recent meta-analyses have revealed a close match in the magnitude and direction of  
28 these size gradients in various arthropod orders, suggesting that these size responses  
29 share common drivers.
- 30 2. As with increasing latitude, temperature also decreases with increasing altitude.  
31 Although the general direction of body size clines along altitudinal gradients has been  
32 examined previously, to our knowledge altitude-body size (A-S) clines have never  
33 been synthesised quantitatively, nor compared with temperature-size (T-S) responses  
34 measured under controlled laboratory conditions.
- 35 3. Here we quantitatively examine variation in intraspecific A-S clines among 121 insect  
36 species from 50 different global locations, representing 12 taxonomic orders. While  
37 some taxa were better represented in the literature than others, our analysis reveals  
38 extensive variation in the magnitude and direction of A-S clines. Following the  
39 assumption that temperature on average declines by 1°C per 150m increase in  
40 altitude, order-specific A-S clines in the field appear to deviate from laboratory T-S  
41 responses. Specifically, the magnitude of A-S clines and T-S responses are more  
42 closely matched in some taxonomic orders (e.g. Diptera) than others (e.g. Orthoptera).  
43 These findings contrast with the strong co-variation observed between latitude-size  
44 clines and T-S responses, and between laboratory and seasonal T-S responses.
- 45 4. The lack of clear size relationships with elevation, and hence temperature, is likely due  
46 to the counteracting effects of other major drivers with altitude, including season length  
47 and oxygen partial pressure. Switches in voltinism within species across altitude, and  
48 the dispersal of individuals across different elevations, may also obscure trends.

49

## 50 INTRODUCTION

51 Body size is fundamentally linked to an organism's fitness, and is correlated with vital  
52 physiological rates and life history characteristics (Kleiber 1947; Brown *et al.* 2004; Hirst,  
53 Glazier & Atkinson 2014). Further, both within and between species, body size has been found  
54 to co-vary with a range of environmental conditions (Bergmann 1847; James 1970; Atkinson  
55 1994). Changes in the body size of organisms can affect not only the fate of individuals and  
56 populations (e.g. by influencing survival, fecundity, population production), but also ecosystem  
57 functioning via size-dependent processes (e.g. predator-prey dynamics, food web  
58 connectivity) (Peters 1983; Honěk 1993). Thus, understanding and ultimately predicting body  
59 size variation with environmental conditions presents a significant ecological challenge of  
60 global importance.

61

62 In ectothermic species, intraspecific variation in body size has been shown to strongly  
63 correlate with temperature, both in controlled laboratory conditions (Atkinson 1994; Forster,  
64 Hirst & Atkinson 2012) and seasonally across the year (Horne *et al.* 2016; Horne, Hirst &  
65 Atkinson 2017). Recurrent patterns in body size also occur across latitudes, and have led to  
66 prominent biogeographical 'rules', such as Bergmann's rule (across taxa, larger species are  
67 found at higher, colder latitudes) (Bergmann 1847), and James' rule (within species, larger  
68 individuals are found at higher, colder latitudes) (James 1970). In arthropods, including  
69 insects, close parallels were recently identified between phenotypically plastic size responses  
70 to temperature measured in the laboratory, and intraspecific changes in body size observed  
71 in the field, both across latitudes and seasonally over an annual cycle. Consistent differences  
72 in both the magnitude and direction of body size gradients were found among taxonomic  
73 orders, between environments (aquatic vs. terrestrial, suggesting an important role for oxygen  
74 availability), and between univoltine and multivoltine terrestrial species (likely an evolutionary  
75 adaptation to changing season length) (Horne, Hirst & Atkinson 2015; Horne, Hirst & Atkinson  
76 2017). This co-variation suggests that these widespread body size phenomena may be driven  
77 by similar selective pressures, and that temperature is an important correlate of size

78 responses in the field, despite a number of confounding factors that can also influence body  
79 size (e.g. resource availability, mortality risk and competition) (Chown & Gaston 2010).

80

81 As with increasing latitude, temperature commonly declines with increasing altitude. On  
82 average, temperature falls by 5.5 to 6.5°C per 1000m increase in elevation (Anslow & Shawn  
83 2002), though this of course varies considerably depending on other climatic and topographic  
84 influences, including aspect, wind speed and cloud cover amongst others (Hodkinson 2005).

85 We might therefore expect those species that grow to a larger adult size in the cold and with  
86 increasing latitude will also exhibit a positive cline in body size with increasing altitude. To our  
87 knowledge, most large syntheses of altitude-body size (A-S) clines have predominantly  
88 focused on whether body size gradients were negative, positive or non-significant (e.g. Dillon,  
89 Frazier & Dudley 2006; Shelomi 2012). Yet, by quantifying and comparing the magnitude of  
90 A-S clines between species and among higher taxonomic groups, we can begin to link  
91 variation in the strength of these body size gradients with key life history characteristics,  
92 habitat and/or functional groups. Furthermore, quantitative data capturing the magnitude of A-  
93 S clines allow for a more direct comparison with laboratory temperature-size (T-S) responses.

94

95 To our knowledge, A-S clines and laboratory T-S responses have not previously been  
96 compared quantitatively. Such a comparison provides an opportunity to explore the extent to  
97 which changes in other environmental parameters might be confounding the effects of  
98 temperature across altitude in the field. For example, an increase in altitude is also  
99 accompanied by a decline in the partial pressure of atmospheric gases, including oxygen,  
100 which decreases near linearly with altitude, such that inspired oxygen pressure at 5500m  
101 elevation is 50% of that at sea level (Peacock 1998). The length of the season in which  
102 individuals are able to grow also typically declines with increasing altitude: these growth  
103 conditions encompass not just appropriate temperatures but also extent of resource  
104 availability (Hodkinson 2005) (see Fig. 1 for an illustration of the predicted effects of these key

105 parameters on body size). Other biologically relevant environmental factors that increase with  
106 altitude include wind speed, precipitation, and UV radiation (Hodkinson 2005).

107

108 Variation in the direction of A-S clines among species has often been attributed to seasonality  
109 and differences in reproductive strategy (Chown & Klok 2003; Shelomi 2012). Multivoltine  
110 species are predicted to grow to a larger adult size at higher colder altitudes, in accordance  
111 with the temperature-size rule (Atkinson 1994). In contrast, univoltine species are much more  
112 dependent on season length and hence on time available for growth (often positively  
113 correlated with temperature) (Chown & Gaston 1999; Blanckenhorn & Demont 2004;  
114 Kozłowski, Czarnoleski & Danko 2004; Shelomi 2012). Consequently, univoltine species are  
115 predicted to reduce their body size with increasing altitude. The extent to which season length  
116 decreases with increasing altitude may also influence the magnitude of A-S clines, particularly  
117 in univoltine species for which time available for growth is limiting. Increased time constraints  
118 with elevation may be especially important in more thermally seasonal environments, such as  
119 at higher latitudes, where the decline in season length along altitudinal gradients is much more  
120 pronounced than in the tropics (Körner 2000; Chown & Klok 2003). Of course, voltinism itself  
121 can vary with environmental conditions, and any switch in reproductive strategy could also  
122 affect the magnitude of any apparent size change (Roff 1980; Mousseau & Roff 1989; Zeuss,  
123 Brunzel & Brandl 2016).

124

125 The spatial distance covered by an A-S cline and the dispersal or migratory ability of a species  
126 may also affect the magnitude of the A-S cline. Latitudinal-size (L-S) clines are typically  
127 measured over larger distances than A-S clines, sometimes spanning thousands of  
128 kilometres, whole continents, and entire species' ranges (e.g. Hassall 2013). By contrast,  
129 altitudinal clines in the size of species are often studied along localized transects (e.g. Smith  
130 *et al.* 2000), or in some cases over tens to hundreds of kilometres at most (e.g. Eweleit &  
131 Reinhold 2014). Consequently, populations are more likely to become interconnected by  
132 individual movement along relatively short-distance elevation gradients (for example by flight

133 and/or passive transport by wind) than along longer-distance latitudinal transects. Therefore,  
134 adults collected at one altitude might have developed at another, where environmental  
135 conditions were very different. This shift between environmental conditions during ontogeny  
136 is more likely for more mobile species with greater dispersal ability, such as winged species  
137 capable of flight (Roff & Fairbairn 2007). As a result, A-S clines in more mobile species may  
138 be obscured or appear weaker.

139

140 Here we explore these different potential influences on A-S clines by quantifying and  
141 examining variation in intraspecific A-S clines in insects, along with a small number of  
142 arachnids and Crustacea. We compare the magnitude and direction of A-S clines based on  
143 taxonomy, voltinism, flight capability, and environment type (freshwater vs. terrestrial). We  
144 then compare these clines to T-S responses measured under controlled laboratory conditions,  
145 to determine whether these major size gradients co-vary, and thus to better understand to  
146 what extent changes in other environmental parameters might be confounding the effects of  
147 temperature on body size across altitude in the field.

148

## 149 **MATERIALS AND METHODS**

150 To quantitatively describe species-specific altitudinal-size clines, we searched the literature  
151 using the Web of Science database (<http://apps.webofknowledge.com/>) and Google Scholar  
152 for published field records of adult body size measured at different altitudes, covering at least  
153 150m in altitudinal range. Most studies were conducted along individual mountain transects,  
154 but occasionally sampling locations were more widely distributed within a local area or region;  
155 in these instances, we only accepted studies in which the sampling locations were distributed  
156 over less than 5° latitude. The primary search term combinations used were: (“altitud\*” OR  
157 “elevation” OR “mountain”) AND “size” AND (“arthropod” OR “insect” OR “[<insert taxonomic  
158 order or common name of taxon>]”). We also used reference lists from the papers we found  
159 to identify additional key literature. Adult size data were collected as lengths, or dry, wet or  
160 carbon masses and subsequently standardised to dry mass (mg) using published intra-

161 specific regressions and conversion factors (see Dataset S1 in Supplementary Information).  
162 In cases where species-specific regressions were unavailable, regressions for related  
163 species, or more general inter-specific regressions were used. All altitudinal measurements  
164 were standardized to metres above sea level.

165

166 We derived species-specific slopes of ordinary least-squares (OLS) regressions between In-  
167 transformed dry mass (mg) and altitude (m). Slopes were calculated for each sex separately  
168 where these data were available. We used this exponential function of body mass as it has  
169 consistently been found to be the best for modelling body size gradients with both temperature  
170 (in the laboratory and seasonally) and across latitude (Forster, Hirst & Atkinson 2012; Horne,  
171 Hirst & Atkinson 2015; Horne, Hirst & Atkinson 2017). Further, this exponential function  
172 allowed us to easily compare these different size gradients with one another. Altitudinal-size  
173 clines were then transformed into percentage change in dry mass per metre of elevation, using  
174 the formula  $(\exp^{(\text{slope})} - 1) * 100 = \% \text{ change in mass per m}$  (Forster, Hirst & Atkinson 2012).  
175 Thus, a positive cline denotes an increase in body size with increasing altitude, whereas a  
176 negative cline denotes a decrease in body size with increasing altitude. In general,  
177 temperature decreases with increasing altitude at a rate of between 5.5°C and 6.5°C per  
178 1000m (Anslow & Shawn 2002), which equates to approximately 1°C per 150m elevation.  
179 Thus, we also calculated the percentage change in dry mass per 150m, using the formula  
180  $(\exp^{(\text{slope} \times 150)} - 1) * 100 = \% \text{ change in mass per 150m elevation (or approximately per } ^\circ\text{C)}$ . This  
181 measure of size change allowed us to more appropriately compare the strength of A-S clines  
182 measured in the field with T-S responses (% change in mass per °C) measured in the  
183 laboratory.

184

### 185 **Statistical analyses**

186 All statistical analyses were conducted in R (version 3.4.1) (R Core Team 2014). Using A-S  
187 clines (% change in mass per 150m) as the dependent variable, we compared several  
188 candidate models to best predict variation in the magnitude and direction of A-S clines based

189 on the Akaike's information criterion (AIC). The following were incorporated as fixed variables  
190 in a global linear mixed effects model (using package lme4): environment (freshwater vs.  
191 terrestrial), voltinism, categorised here as species that are generally regarded as having  $\leq 1$   
192 generation per year (includes univoltine) or  $>1$  generation per year (multivoltine), flight  
193 capability (flying vs. flightless), and  $\log_{10}$ -transformed species body mass (calculated at 1500m  
194 altitude using species-specific A-S slopes, and representing the approximate mid-point of the  
195 altitudinal range across all the studies in our data set).  $\log_{10}$ -transformed species body mass  
196 was included as a covariate to determine if A-S clines were dependent on the body size of the  
197 species. A-S clines from multiple studies of the same species were included in our analyses;  
198 thus, given that species have shared evolutionary histories and so are not completely  
199 independent, we included levels of taxonomic classification (order, family, and species) as  
200 nested (hierarchical) random effects on the intercept in all models to help control for  
201 phylogeny, and to account for the disproportionate representation of taxonomic orders in our  
202 data set. Given that A-S clines did not differ significantly between males and females, and sex  
203 was not reported in all studies, we chose to exclude it as a random effect in the models. A-S  
204 clines for multiple species were sometimes measured in similar study locations or regions,  
205 and so we also included location (categorized using latitude and longitude) as a random effect  
206 on the intercept, to help control for potential geographical clumping of the data. Finally, we  
207 accounted for variation in information quality by weighting each A-S cline by the inverse of the  
208 variance of its slope estimate (using the 'weights' function in R) (Koricheva, Gurevitch &  
209 Mengersen 2013). This helped to account for the fact that A-S clines were derived from data  
210 that varied in their goodness of fit between studies and species. We compared all possible  
211 combinations of the global model terms using the dredge function in the MuMIn package  
212 (Barton 2017); this included an intercept-only model, which contained no independent  
213 variables and predicted that the best estimate of A-S clines was the intercept. The best model  
214 was identified as that with the lowest small-samples corrected AIC (AICc). Where the  
215 difference between a model's AICc and the lowest AICc (i.e.  $\Delta AICc$ ) was  $<2$ , a set of best fit  
216 models, rather than a single best model, was assumed. Model averaging was then used to



217 identify the best predictor variables across the top candidate models, and determine their  
218 relative importance (computed for each variable as the sum of the Akaike weights from all  
219 models in which they appear). In addition to AIC, a series of F tests were used to verify the  
220 significance ( $p < 0.05$ ) of each parameter's effect on the strength of the seasonal T-S gradient.

221

222 To compare A-S clines with laboratory controlled T-S responses, we used the data compilation  
223 of Horne *et al.* (2015) . For each data set, we first generated single species-specific body size  
224 gradients by combining size gradients from multiple studies of the same species into a simple  
225 mean. We then averaged these species-specific gradients for each taxonomic order,  
226 separated by voltinism, and plotted the resulting order-specific A-S clines against order-  
227 specific laboratory T-S responses. We then assessed the extent to which both of these body  
228 size gradients co-varied (i.e. whether a 1% increase in body size per 150m altitude = 1%  
229 decrease in body size per °C in the laboratory).

230

231 We acknowledge that the use of interspecific length-mass conversions may increase the  
232 likelihood of inaccuracy when determining body size gradients, particularly as small deviations  
233 in the equation's power term can result in substantial over- or under-estimation of the  
234 percentage change in body size. Wherever possible, therefore, we used species-specific  
235 length-mass regressions, but sometimes had to rely on family- and order-specific conversions,  
236 and authors often employed a variety of equation forms. To reduce risks that uncertainties in  
237 these length-to-mass conversions would bias our conclusions, we therefore repeated our  
238 analysis using length in place of dry mass to generate a second set of A-S clines (% change  
239 in length  $150\text{m}^{-1}$ ). To do this we used either the original length measurements reported, or  
240 calculated the cube-root of mass when this was given.

241

242

243 **RESULTS**

244 We derived a total of 229 altitude-size clines representing 121 species from 12 taxonomic  
245 orders. These size clines were recorded at 50 different global locations ranging from 53° South  
246 to 66° North, with most locations falling around mid-latitude regions (Fig. 2). The data set  
247 contained a near even distribution of negative and positive A-S clines, with 49% of clines  
248 showing a decrease in adult body size with increasing altitude. We found that neither of the  
249 sexes within species showed a consistently stronger cline in body size with altitude than the  
250 other ( $F_{1,227}=0.0004$ ,  $p=0.98$ ; also see Fig. 3), which parallels the lack of sex differences in  
251 laboratory T-S responses within arthropod species (Hirst, Horne & Atkinson 2015). Across  
252 species, the magnitude of A-S clines varied considerably, with some of the strongest size  
253 clines observed in the Coleoptera, Orthoptera and Hymenoptera (see Fig. 3). Approximately  
254 69% of the A-S clines in our data set were based on measurements of body length, width or  
255 direct measurements of mass, whereas the remaining clines were derived from limb  
256 measurements, including femur length and wing length, as well as head width (all of which  
257 had been converted to mass). Whether A-S clines were originally derived from whole- or part-  
258 body measurements had no significant effect on the magnitude of A-S clines in our data set,  
259 ( $F_{1,227}=1.99$ ,  $p=0.16$ ), and this was also the case when A-S clines were calculated using length  
260 in place of dry mass ( $F_{1,227}=1.88$ ,  $p=0.17$ ).

261

262 None of the fixed variables included in our global model (environment, voltinism, flight  
263 capability and  $\log_{10}$ -transformed species body mass) could significantly explain variation in A-  
264 S clines. Although the best supported model contained environment type (freshwater vs.  
265 terrestrial), voltinism, and  $\log_{10}$ -transformed species body mass as independent variables  
266 ( $R^2=0.26$ ) (see Table S1 in Supplementary Information for AIC output), 6 alternative models  
267 had a  $\Delta AICc$  less than 2; this included an intercept-only model, which contained no  
268 independent variables and predicted that the best estimate of A-S clines was the intercept,  
269 which did not differ significantly from zero (3.9% change in body mass  $150m^{-1}$ ;  $\pm 7.1$  95% CI).

270 Coleoptera (-1.5% body mass  $150\text{m}^{-1}$ ;  $\pm 4.5$  95% CI) and Orthoptera (-0.7% body mass  $150\text{m}^{-1}$ ;  
271  $\pm 2.3$  95% CI) were among those taxonomic orders to show on average a decrease in body  
272 size with increasing altitude, whereas orders such as Diptera (1.2% body mass  $150\text{m}^{-1}$ ;  $\pm 2.3$   
273 95% CI), Hymenoptera (1.8% body mass  $150\text{m}^{-1}$   $\pm 5.2$  95% CI) and Lepidoptera (1.1% body  
274 mass  $150\text{m}^{-1}$ ;  $\pm 1.2$  95% CI) tended to show the opposite pattern (Fig. 4). Yet, these patterns  
275 were not strong enough for a significant effect of taxonomic order on the magnitude of the A-  
276 S cline to be detected ( $F_{11,217}=0.80$ ,  $p=0.64$ ).

277

278 When we categorized species into those which commonly have one generation or fewer per  
279 year, or species that have multiple generations per year, the former showed on average a  
280 reduction in their body size with increasing altitude (-0.4% body mass  $150\text{m}^{-1}$ ;  $\pm 1.4$  95% CI),  
281 whereas the latter showed a mean increase in body size with increasing altitude (1.0% body  
282 mass  $150\text{m}^{-1}$ ;  $\pm 2.0$  95% CI) (Fig. 5a). However, again these patterns were not strong enough  
283 to detect a significant effect of voltinism on the magnitude of the A-S cline ( $F_{1,227}=0.66$ ,  $p=0.42$ ).  
284 Similarly, we found no significant effect of flight capability ( $F_{1,227}=2.25$ ,  $p=0.14$ ) (Fig. 5b) or  
285  $\log_{10}$  transformed species body mass, when calculated either at 1500m for all species  
286 ( $F_{1,227}=1.11$ ,  $p=0.29$ ), or at the mid-altitude of each individual study ( $F_{1,227}=0.64$ ,  $p=0.42$ ). Akin  
287 to patterns observed in temperature-size (laboratory and seasonal) and latitude-size  
288 gradients, on average freshwater species exhibited stronger positive A-S clines (4.8% body  
289 mass  $150\text{m}^{-1}$ ;  $\pm 4.0$  95% CI) relative to terrestrial species (-0.1% body mass  $150\text{m}^{-1}$ ;  $\pm 1.2$  95%  
290 CI), though again this effect was not significant ( $F_{1,227}=2.36$ ,  $p=0.13$ ) (Fig. 5c).

291

292 We tested the robustness of our conclusion that none of the fixed parameters significantly  
293 affected the strength of the A-S cline. First, we responded to the more variable strengths of A-  
294 S clines observed over relatively small altitudinal ranges by re-running analyses only for A-S  
295 clines measured over  $\geq 500\text{m}$  altitudinal range (determined by the point at which variation in  
296 the magnitude of A-S clines appeared to stabilize; see Figure S1). Again, none of the fixed  
297 variables included in our global model could significantly explain variation in A-S clines.

298 Second, re-analysis using A-S clines calculated from original length measurements, in place  
299 of dry mass, also revealed no significant effects of any of the fixed variables. The findings from  
300 this approach are summarised in more detail in the Supplementary Information.

301

302 Finally, we examined whether A-S clines were similar in direction and magnitude to  
303 temperature-size responses measured under controlled laboratory conditions (at the level of  
304 taxonomic order, given that A-S and T-S data sets largely contained different species). The  
305 plot of order-specific A-S clines (% change in dry mass per 150m) against laboratory T-S  
306 responses (% change in dry mass per °C), taken from the comprehensive data set of Horne  
307 *et al.* (2015), is shown in Figure 6. Given the low correlation coefficient ( $r^2=0.24$ ) between A-  
308 S clines measured in the field and T-S responses measured in the laboratory, following Smith  
309 (2009), we chose not to fit an RMA regression through the data. However, from visual  
310 inspection we might ascertain from Figure 6 that temperature is a more important driver of  
311 body size change in some taxa compared to others. These comparisons largely test the  
312 degree to which A-S clines and laboratory T-S responses are influenced by temperature  
313 gradients. However, even when comparing order-specific A-S clines with latitudinal-size  
314 clines, which capture variation both in season length and temperature, we did not observe a  
315 significant correlation (RMA slope= $0.50\pm 0.50$  95% CI,  $r^2=0.01$ ). This leads us to suggest that  
316 the confounding factors affecting the direction and magnitude of body size clines across  
317 altitudes are much stronger than those across latitudes, particularly given the strong co-  
318 variation between L-S clines and laboratory T-S responses (Horne, Hirst & Atkinson 2015).

319

## 320 **DISCUSSION**

321 Our synthesis of A-S clines in insects reveals widespread variation not just in the direction of  
322 these body size gradients, but also in their magnitude. The lack of statistical support for the  
323 effects of our model parameters [environment (aquatic vs. terrestrial), voltinism, flight  
324 capability and species body mass], and the large amount of unexplained variation in A-S

325 clines, suggests that other environmental factors or life history traits not captured by our model  
326 are influencing altitudinal clines in body size.

327

328 We suggest that genotype mixing is more likely along short-distance elevation gradients  
329 (compared to longer-distance latitudinal gradients), and thus A-S clines may result primarily  
330 from phenotypic plasticity, as is observed in laboratory T-S responses, rather than genetic  
331 variation (Keller *et al.* 2013). Thus, if temperature is a major correlate of body size variation  
332 with altitude, we might expect a particularly close match between A-S clines and plastic  
333 laboratory T-S responses. However, although A-S clines observed at the level of taxonomic  
334 order were generally similar in direction to temperature-body size responses measured under  
335 controlled laboratory conditions (falling within the non-shaded areas in Fig. 6), they did not  
336 significantly correlate in magnitude.

337

338 The lack of correlation between A-S clines and T-S responses is in contrast to the strong  
339 correlations observed between L-S clines and T-S responses (Horne, Hirst & Atkinson 2015),  
340 and also between laboratory and seasonal T-S responses (Horne, Hirst & Atkinson 2017),  
341 which did not differ significantly from a 1:1 relationship on average. We note however, that the  
342 A-S and T-S data sets largely contain different species, with some taxonomic orders better  
343 represented than others in our data set. We also re-emphasize that the extent to which these  
344 two body size gradients co-vary is based upon the assumption that temperature on average  
345 declines by 1°C per 150m increase in altitude, which does not capture the variation between  
346 study locations (Hodkinson 2005).

347

348 Another counter argument to our conclusion that the environmental parameters confounding  
349 the effects of temperature are stronger across altitudes than across latitudes, is that the strong  
350 correlation observed between L-S clines and T-S responses (Horne, Hirst & Atkinson 2015) is  
351 due to the inclusion of additional taxonomic orders, particularly aquatic crustaceans. Yet, even  
352 when those orders not present in the A-S data set are excluded from the data of Horne, Hirst

353 and Atkinson (2015), we still observe a significant negative correlation (inferred from 95% CIs)  
354 between order-specific laboratory T-S responses and L-S clines (RMA slope= $-0.55 \pm 0.27$  95%  
355 CI) which explains much of the variability in the data ( $r^2=0.88$ ). Therefore, we suggest that the  
356 mismatch in the magnitude of A-S clines and laboratory T-S responses arises from other  
357 environmental parameters confounding the effects of temperature on the magnitude of A-S  
358 clines.

359

360 In previous studies (Chown & Klok 2003; Shelomi 2012), differences in the direction of A-S  
361 clines were observed between taxa with different reproductive strategies (i.e. voltinism), which  
362 corresponds with intraspecific body size patterns observed across latitudes, and also with T-  
363 S responses measured in the laboratory (Chown & Gaston 1999; Blanckenhorn & Demont  
364 2004; Horne, Hirst & Atkinson 2015). Season length generally declines at higher elevations,  
365 and unlike species with multiple generations per year, adult sizes of univoltine species are  
366 likely to be much more sensitive to changes in seasonality: as season length decreases, so  
367 does time available for growth and reproduction, which imposes limits on size at maturity; thus,  
368 the maximisation of fitness may come from utilising as much of the available season length as  
369 possible. In contrast, generation time in multivoltine species is relatively short and  
370 consequently adult size in each generation is less sensitive to changes in season length;  
371 instead, size at maturity in multivoltine species is predicted to be more dependent on changes  
372 in temperature (Chown & Gaston 1999; Kozłowski, Czarnoleski & Danko 2004). Yet here, we  
373 found no significant effect of voltinism on A-S clines.

374

375 Voltinism itself can vary with environmental conditions within a species (Zeuss, Brunzel &  
376 Brandl 2016), and this has the potential to obscure body size gradients in the field. It is  
377 plausible that species with longer generation times may switch between a bivoltine and  
378 univoltine life cycle at higher altitudes, for example, allowing more time for growth despite a  
379 decrease in season length, thus weakening any negative cline in body size. Such a switch in  
380 voltinism is predicted to result in a 'saw-tooth' body size cline (Roff 1980), and consequently

381 the slope of size change across the entire altitudinal gradient would appear shallower.  
382 Similarly, although multivoltine species with very short generation times are predicted to  
383 increase in size at higher colder altitudes, in species with just two generations per year,  
384 variation in size at maturity may be more strongly dependent on season length than  
385 temperature. Thus, these species may be more likely to exhibit a negative A-S cline. Of  
386 course, the extent to which season length decreases with altitude can vary between study  
387 locations, influencing the magnitude of A-S clines; for example, Chown and Klok (2003) found  
388 opposing A-S clines in weevil species sampled from two regions that differed in their  
389 seasonality. Although altitudinal variation in seasonality is often more pronounced at higher  
390 latitudes (Körner 2000), latitude is only a proxy for seasonality, corresponding with relatively  
391 broad changes in environmental conditions. We lack the high-resolution climate data,  
392 including changes in season length and resource availability with altitude, that would provide  
393 a much more robust test of this hypothesis. This lack of high-resolution data is particularly  
394 important for mountainous regions, as fine-scale variation in environmental conditions due to  
395 local topography can result in microclimates that differ from surrounding regions (Suggitt *et al.*  
396 2011).

397

398 We also hypothesised that a reduction in oxygen partial pressure (i.e. a reduction in oxygen  
399 availability per unit volume of air) with altitude might limit energy available for growth if species  
400 cannot increase their air intake, confounding the effects of temperature on body size (Peacock  
401 1998). Indeed, under experimental conditions, lower proportional oxygen concentrations have  
402 been shown to lead to a reduction in size-at-stage (Frazier, Woods & Harrison 2001; Peck &  
403 Maddrell 2005; Atkinson, Morley & Hughes 2006; Walczyńska *et al.* 2015). This might act to  
404 weaken any potential increase in adult body size at higher colder altitudes, or even exacerbate  
405 body size reduction in those species that already grow to a smaller size with decreasing  
406 season length. In aquatic species, a greater increase in oxygen demand than supply with  
407 warming has also been proposed as an important driver of body size reduction (Atkinson,  
408 Morley & Hughes 2006), with species developing in water exhibiting particularly strong

409 reductions in size with warming and towards the equator compared to those on land (Forster,  
410 Hirst & Atkinson 2012; Horne, Hirst & Atkinson 2015; Horne, Hirst & Atkinson 2017). These  
411 patterns would correspond with an increase in size at higher colder altitudes, and although not  
412 significant, on average aquatic species did show stronger positive A-S clines relative to  
413 terrestrial species. Obtaining data for freshwater species proved extremely difficult, with many  
414 studies having explored inter- as opposed to intra-specific patterns in body size.  
415 Consequently, species from aquatic environments contribute only a very small proportion of  
416 the data analysed here. A-S clines for aquatic species represent a significant gap in the  
417 literature, and we would strongly encourage field studies to incorporate such measurements  
418 in the future. We caution, however, that many insects lay their eggs upstream, which can then  
419 drift downstream, making it difficult to know exactly where they developed.

420

421 Of the taxonomic orders better represented in our data set, Orthopterans exhibited a  
422 particularly weak A-S cline relative to their T-S response. Although overall we found no  
423 significant effect of flight ability on the magnitude of the A-S cline, Orthoptera are  
424 hemimetabolous, producing nymphs that resemble the adult phase (Daly, Doyen & Ehrlich  
425 1978). Although nymphs cannot fly, the increased mobility of individuals during ontogeny (c.f.  
426 relatively sedentary larvae in holometabolous taxa, such as Diptera) could potentially obscure  
427 A-S clines observed in this taxon. In a study of the bush cricket *Pholidoptera griseoptera*,  
428 juveniles and imagos exhibited equally good dispersal ability (Diekötter *et al.* 2005), whilst  
429 Alexander (1964) reported collecting many species of montane grasshopper as much as  
430 several thousand feet above their normal breeding range. Consequently, altitude at time of  
431 collection may not necessarily resemble altitude during ontogeny in these more mobile  
432 species, increasing the likelihood of dispersal and/or migration between sampling locations.  
433 Even when stricter screening criteria excluded clines covering less than 500m in altitude,  
434 potentially removing some of the noise in the data caused by the movement of individuals  
435 between nearby sampling locations, the estimated average A-S cline for univoltine Orthoptera  
436 was still half that of their laboratory T-S response. One alternative way to examine the effect



437 of dispersal on A-S clines would be to measure body size in individuals grown in field  
438 enclosures at different elevations, and which hence would not be able to disperse across  
439 altitudes. Such an approach helps exclude not just the effect of dispersive individuals, but also  
440 other confounding biotic factors, such as certain types of predation and competition (e.g. Joern  
441 & Klucas 1993; Blanckenhorn 1998; Darr *et al.* 2016). However, lack of such data prevented  
442 a quantitative investigation of species with highly mobile juveniles reared inside enclosures  
443 throughout their ontogeny at natural rather than manipulated densities, and which would allow  
444 body size to be compared within versus outside enclosures across a suitable altitudinal range.

445

446 Given that altitudinal environmental changes can differ substantially between study locations,  
447 currently it seems that only broad predictions can be made about the direction of A-S clines.  
448 Although altitude correlates with average temperature, it also correlates with many other  
449 environmental parameters, and disentangling their effects is challenging. For example, a  
450 reduction in the partial pressure of respiratory gases with altitude not only reduces oxygen  
451 availability, but also serves to reduce overall air density (Hodkinson 2005), which can be  
452 particularly problematic for active fliers. Selection in these species may favour larger wings  
453 with greater surface area to maintain flight performance at higher altitudes, or alternatively,  
454 smaller body mass to reduce wing loading (Hodkinson 2005). A recent study also showed that,  
455 on average, predation risk for insects increases with decreasing latitude and elevation (Roslin  
456 *et al.* 2017), and greater predation risk at lower altitudes may select for earlier maturation at a  
457 smaller adult size. To more accurately predict the magnitude of intraspecific body size clines,  
458 a detailed understanding of the life history of the species or taxonomic group in question,  
459 coupled with fine scale information on local environmental conditions and topography, should  
460 be provided on a case by case basis. Nevertheless, by comparing A-S clines with laboratory  
461 T-S responses, in which many confounding variables are controlled, we can begin to postulate  
462 which environmental factors and/or life history traits are important in driving variation in A-S  
463 clines between different taxonomic groups. Although we observe a relatively close match in  
464 the magnitude of A-S clines and laboratory T-S responses in some taxa (e.g. Diptera,

465 Coleoptera, Hymenoptera), suggesting a particularly important role for temperature,  
466 deviations away from a 1:1 relationship in other taxa (e.g. Orthoptera) may indicate that other  
467 environmental variables confound the effects of temperature on body size along elevation  
468 gradients.

469

470 These observations may be particularly informative for predicting effects on body size of  
471 terrestrial ectotherms that are shifting their altitudinal distribution with climate warming (Chen  
472 *et al.* 2011). These range shifts may enable species to track favourable thermal environments,  
473 thereby negating any potential effects of warming on body size; yet, warming of high-altitude  
474 environments will not be accompanied by similar changes in other environmental parameters  
475 (e.g. oxygen partial pressure, photoperiod). Therefore, in those species whose adult size is  
476 influenced more by these other variables, altitudinal range shifts may still be accompanied by  
477 significant changes in the size of species.

478

#### 479 **ACKNOWLEDGEMENTS**

480 We are grateful to the many authors who have kindly donated data or clarified aspects of their  
481 studies. We thank Wolf Blanckenhorn, Christopher Hassall, David Morritt, Tiit Teder, an  
482 anonymous reviewer, and the editors, who provided insightful comments that helped to greatly  
483 improve the work. CRH was supported by a Natural Environment Research Council (NERC)  
484 Studentship NE/L501797/1. AGH was supported by NERC and the Department for  
485 Environment, Food and Rural Affairs [grant number NE/L003279/1, Marine Ecosystems  
486 Research Programme]. The Centre for Ocean Life is a VKR Centre of Excellence supported  
487 by the Villum Foundation.

488

489

490

491

492

493 **REFERENCES**

- 494 Alexander, G. (1964) Occurrence of grasshoppers as accidentals in the Rocky Mountains of  
495 Northern Colorado. *Ecology*, **45**, 77-86.
- 496 Anslow, F.S. & Shawn, M.J. (2002) An investigation of local alpine terrestrial lapse rates in the  
497 Canadian Rockies. *Proceedings of the 32nd Annual Arctic Workshop, INSTAAR,*  
498 *University of Colorado, Boulder*, 1.
- 499 Atkinson, D. (1994) Temperature and organism size - A biological law for ectotherms.  
500 *Advances in Ecological Research*, **25**, 1-58.
- 501 Atkinson, D., Morley, S.A. & Hughes, R.N. (2006) From cells to colonies: at what levels of  
502 body organization does the 'temperature-size rule' apply? *Evolution & Development*,  
503 **8**, 202-214.
- 504 Barton, K. (2017) MuMIn; multi-model inference. R package version 1.40.0.
- 505 Bergmann, C. (1847) Über die verhältnisse der wärmeökonomie der thiere zu ihrer grösse.  
506 *Göttinger Studien, Göttingen*, **3**, 595-708.
- 507 Blanckenhorn, W.U. (1998) Adaptive phenotypic plasticity in growth, development, and body  
508 size in the yellow dung fly. *Evolution*, **52**, 1394-1407.
- 509 Blanckenhorn, W.U. & Demont, M. (2004) Bergmann and converse Bergmann latitudinal  
510 clines in Arthropods: two ends of a continuum? *Integrative and Comparative Biology*,  
511 **44**, 413-424.
- 512 Brown, J.H., Gillooly, J.F., Allen, A.P., Savage, V.M. & West, G.B. (2004) Toward a metabolic  
513 theory of ecology. *Ecology*, **85**, 1771-1789.
- 514 Chen, I.-C., Hill, J.K., Ohlemüller, R., Roy, D.B. & Thomas, C.D. (2011) Rapid range shifts of  
515 species associated with high levels of climate warming. *Science*, **333**, 1024-1026.
- 516 Chown, S.L. & Gaston, K.J. (1999) Exploring links between physiology and ecology at macro-  
517 scales: the role of respiratory metabolism in insects. *Biological reviews*, **74**, 87-120.
- 518 Chown, S.L. & Gaston, K.J. (2010) Body size variation in insects: a macroecological  
519 perspective. *Biological Reviews of the Cambridge Philosophical Society*, **85**, 139-169.

- 520 Chown, S.L. & Klok, C.J. (2003) Altitudinal body size clines: latitudinal effects associated with  
521 changing seasonality. *Ecography*, **26**, 445-455.
- 522 Daly, H.V., Doyen, J.T. & Ehrlich, P.R. (1978) *Introduction to insect biology and diversity*.  
523 McGraw-Hill Book Company.
- 524 Darr, M., McAvoy, T., Brewster, C. & Salom, S. (2016) Field-cage evaluation of survival,  
525 reproduction, and feeding behavior of adult *Scymnus coniferarum* (Coleoptera:  
526 Coccinellidae), a predator of *Adelges tsugae* (Hemiptera: Adelgidae). *Environmental*  
527 *Entomology*, **45**, 1527-1535.
- 528 Diekötter, T., Csencsics, D., Rothenbühler, C., Billeter, R. & Edwards, P.J. (2005) Movement  
529 and dispersal patterns in the bush cricket *Pholidoptera griseoptera*: the role of  
530 developmental stage and sex. *Ecological Entomology*, **30**, 419-427.
- 531 Dillon, M.E., Frazier, M.R. & Dudley, R. (2006) Into thin air: Physiology and evolution of alpine  
532 insects. *Integrative and Comparative Biology*, **46**, 49-61.
- 533 Eweleit, L. & Reinhold, K. (2014) Body size and elevation: do Bergmann's and Rensch's rule  
534 apply in the polytypic bushcricket *Poecilimon veluchianus*? *Ecological Entomology*, **39**,  
535 133-136.
- 536 Forster, J., Hirst, A.G. & Atkinson, D. (2012) Warming-induced reductions in body size are  
537 greater in aquatic than terrestrial species. *Proceedings of the National Academy of*  
538 *Sciences*, **109**, 19310-19314.
- 539 Frazier, M.R., Woods, H.A. & Harrison, J.F. (2001) Interactive effects of rearing temperature  
540 and oxygen on the development of *Drosophila melanogaster*. *Physiological and*  
541 *Biochemical Zoology*, **74**, 641-650.
- 542 Hassall, C. (2013) Time stress and temperature explain continental variation in damselfly body  
543 size. *Ecography*, **36**, 894-903.
- 544 Hirst, A.G., Glazier, D.S. & Atkinson, D. (2014) Body shape shifting during growth permits  
545 tests that distinguish between competing geometric theories of metabolic scaling.  
546 *Ecology Letters*, **17**, 1274-1281.

547 Hirst, A.G., Horne, C.R. & Atkinson, D. (2015) Equal temperature-size responses of the sexes  
548 are widespread in arthropod species. *Proceedings of the Royal Society of London B:*  
549 *Biological Sciences*, **282**, 20152475.

550 Hodkinson, I.D. (2005) Terrestrial insects along elevation gradients: species and community  
551 responses to altitude. *Biological reviews*, **80**, 489-513.

552 Honěk, A. (1993) Intraspecific variation in body size and fecundity in insects: A general  
553 relationship. *Oikos*, **66**, 483-492.

554 Horne, C.R., Hirst, A. & Atkinson, D. (2017) Seasonal body size reductions with warming co-  
555 vary with major body size gradients in arthropod species. *Proceedings of the Royal*  
556 *Society of London B: Biological Sciences*, **284**, 20170238.

557 Horne, C.R., Hirst, A.G. & Atkinson, D. (2015) Temperature-size responses match latitudinal-  
558 size clines in arthropods, revealing critical differences between aquatic and terrestrial  
559 species. *Ecology Letters*, **18**, 327-335.

560 Horne, C.R., Hirst, A.G., Atkinson, D., Neves, A. & Kiørboe, T. (2016) A global synthesis of  
561 seasonal temperature-size responses in copepods. *Global Ecology and Biogeography*,  
562 **25**, 988-999.

563 James, F.C. (1970) Geographic size variation in birds and its relationship to climate. *Ecology*,  
564 **51**, 365-390.

565 Joern, A. & Klucas, G. (1993) Intra- and interspecific competition in adults of two abundant  
566 grasshoppers (Orthoptera: Acrididae) from a sandhills grassland. *Environmental*  
567 *Entomology*, **22**, 352-361.

568 Keller, I., Alexander, J.M., Holderegger, R. & Edwards, P.J. (2013) Widespread phenotypic  
569 and genetic divergence along altitudinal gradients in animals. *Journal of Evolutionary*  
570 *Biology*, **26**, 2527-2543.

571 Kleiber, M. (1947) Body size and metabolic rate. *Physiological Reviews*, **27**, 511-541.

572 Koricheva, J., Gurevitch, J. & Mengersen, K. (2013) *Handbook of meta-analysis in ecology*  
573 *and evolution*. Princeton University Press.

574 Körner, C. (2000) Why are there global gradients in species richness? Mountains might hold  
575 the answer. *Trends in Ecology & Evolution*, **15**, 513-514.

576 Kozłowski, J., Czarnoleski, M. & Danko, M. (2004) Can optimal resource allocation models  
577 explain why ectotherms grow larger in cold? *Integrative and Comparative Biology*, **44**,  
578 480-493.

579 Mousseau, T.A. & Roff, D.A. (1989) Adaptation to seasonality in a cricket: patterns of  
580 phenotypic and genotypic variation in body size and diapause expression along a cline  
581 in season length. *Evolution*, **43**, 1483-1496.

582 Peacock, A.J. (1998) Oxygen at high altitude. *BMJ: British Medical Journal*, **317**, 1063.

583 Peck, L.S. & Maddrell, S.H.P. (2005) Limitation of size by hypoxia in the fruit fly *Drosophila*  
584 *melanogaster*. *Journal of Experimental Zoology Part A: Ecological and Integrative*  
585 *Physiology*, **303A**, 968-975.

586 Peters, R.H. (1983) *The ecological implications of body size*. Cambridge University Press,  
587 Cambridge.

588 R Core Team (2014) *R: A language and environment for statistical computing*. R Foundation  
589 for Statistical Computing, Vienna, Austria.

590 Roff, D. (1980) Optimizing development time in a seasonal environment: the 'ups and downs'  
591 of clinal variation. *Oecologia*, **45**, 202-208.

592 Roff, D.A. & Fairbairn, D.J. (2007) The evolution and genetics of migration in insects.  
593 *Bioscience*, **57**, 155-164.

594 Roslin, T., Hardwick, B., Novotny, V., Petry, W.K., Andrew, N.R., Asmus, A., . . . Slade, E.M.  
595 (2017) Higher predation risk for insect prey at low latitudes and elevations. *Science*,  
596 **356**, 742.

597 Shelomi, M. (2012) Where are we now? Bergmann's rule sensu lato in insects. *American*  
598 *Naturalist*, **180**, 511-519.

599 Smith, R.J. (2009) Use and misuse of the reduced major axis for line-fitting. *American Journal*  
600 *of Physical Anthropology*, **140**, 476-486.

- 601 Smith, R.J., Hines, A., Richmond, S., Merrick, M., Drew, A. & Fargo, R. (2000) Altitudinal  
602 variation in body size and population density of *Nicrophorus investigator* (Coleoptera:  
603 Silphidae). *Environmental Entomology*, **29**, 290-298.
- 604 Suggitt, A.J., Gillingham, P.K., Hill, J.K., Huntley, B., Kunin, W.E., Roy, D.B. & Thomas, C.D.  
605 (2011) Habitat microclimates drive fine-scale variation in extreme temperatures. *Oikos*,  
606 **120**, 1-8.
- 607 Walczyńska, A., Labecka, A.M., Sobczyk, M., Czarnoleski, M. & Kozłowski, J. (2015) The  
608 Temperature-Size Rule in *Lecane inermis* (Rotifera) is adaptive and driven by nuclei  
609 size adjustment to temperature and oxygen combinations. *Journal of Thermal Biology*,  
610 **54**, 78-85.
- 611 Zeuss, D., Brunzel, S. & Brandl, R. (2016) Environmental drivers of voltinism and body size in  
612 insect assemblages across Europe. *Global Ecology and Biogeography*, **26**, 154-165.

613

#### 614 **SUPPORTING INFORMATION**

615 Additional supporting information may be found in the online version of this article.

616

617 **Data Set S1.xlsx:** Raw data used in this study.

618 **Supplementary Information.pdf:** Table S1, Table S2, Figure S1 and additional length-  
619 based analyses.

620

621 Please note: Wiley Blackwell are not responsible for the content or functionality of any  
622 supporting information supplied by the authors. Any queries (other than missing material)  
623 should be directed to the corresponding author for the article.

624

625

626

627

628 **FIGURE LEGENDS**

629

630 **Figure 1.** The predicted effects of i) decreasing temperature, ii) decreasing oxygen partial  
631 pressure and iii) decreasing season length with increasing altitude on size at maturity in  
632 insects. Body size is predicted to increase with decreasing temperature, following the  
633 temperature-size rule, particularly in multivoltine species. However, a decrease in the partial  
634 pressure of oxygen at higher altitudes may reduce the available energy for growth, acting in  
635 the opposite direction to constrain body size. Similarly, shorter season length is predicted to  
636 decrease body size at higher altitude in univoltine species, as resource availability and time  
637 available for growth is reduced.

638

639 **Figure 2.** World map indicating the location of studies (n=50) from which altitudinal-size clines  
640 were recorded.

641

642 **Figure 3.** Altitudinal-size clines (% change in body mass per 150m) of individual species,  
643 including both males and females, categorized by taxonomic order (Amphipoda (A), Araneae  
644 (Ar), Coleoptera (Col), Diptera (Dip), Hemiptera (He), Hymenoptera (Hym), Isopoda (I),  
645 Lepidoptera (Lep), Orthoptera (Orth), Plecoptera (Plec), Trichoptera (T) and Trombidiformes  
646 (Tr)). Species within each order are also categorized by voltinism: one generation or less per  
647 year (unshaded background), multiple generations per year (shaded background). Dashed  
648 horizontal line indicates no change in body size with altitude. Dashed vertical lines divide  
649 taxonomic orders.

650

651 **Figure 4.** A-S clines ( $\pm 95\%$  CI), averaged by taxonomic order and by voltinism (one generation  
652 or less per year ( $\leq 1$ ), multiple generations per year ( $> 1$ )). The number of species within each  
653 order is given in brackets. Dashed horizontal line indicates no change in body size with altitude  
654 There is no significant effect of taxonomic order on the strength of the A-S cline.



655

656 **Figure 5.** Mean A-S clines ( $\pm 95\%$  CI) in (A) species with one generation or less per year vs.  
657 those with multiple generations per year, (B) flightless vs. flying species, and (C) freshwater  
658 vs. terrestrial species. The number of A-S clines are given in brackets. Dashed horizontal line  
659 indicates no change in body size with altitude. Shared letters above data points indicate no  
660 significant difference.

661

662 **Figure 6.** A comparison of order-specific altitudinal-size clines (% change in body mass per  
663 150m  $\pm$ SE) with laboratory temperature-size responses (% change in body mass per  $^{\circ}\text{C} \pm$ SE)  
664 for species with one generation or less per year ( $\leq 1$ ; open symbols) and multiple generations  
665 per year ( $> 1$ ; shaded symbols). Dashed line indicates a 1:1 relationship. Taxonomic orders  
666 which fall within the shaded quadrants exhibit a mismatch in the direction of their mean A-S  
667 cline and T-S gradient.

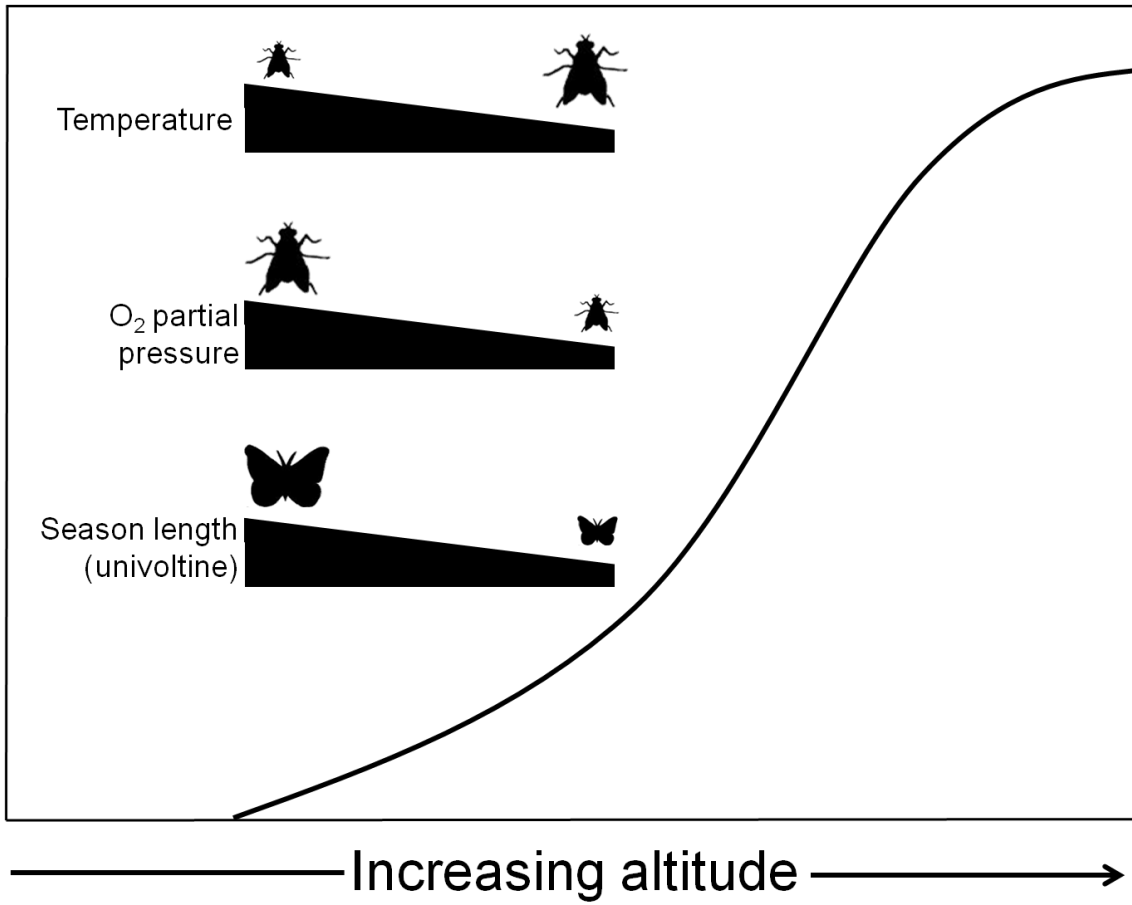
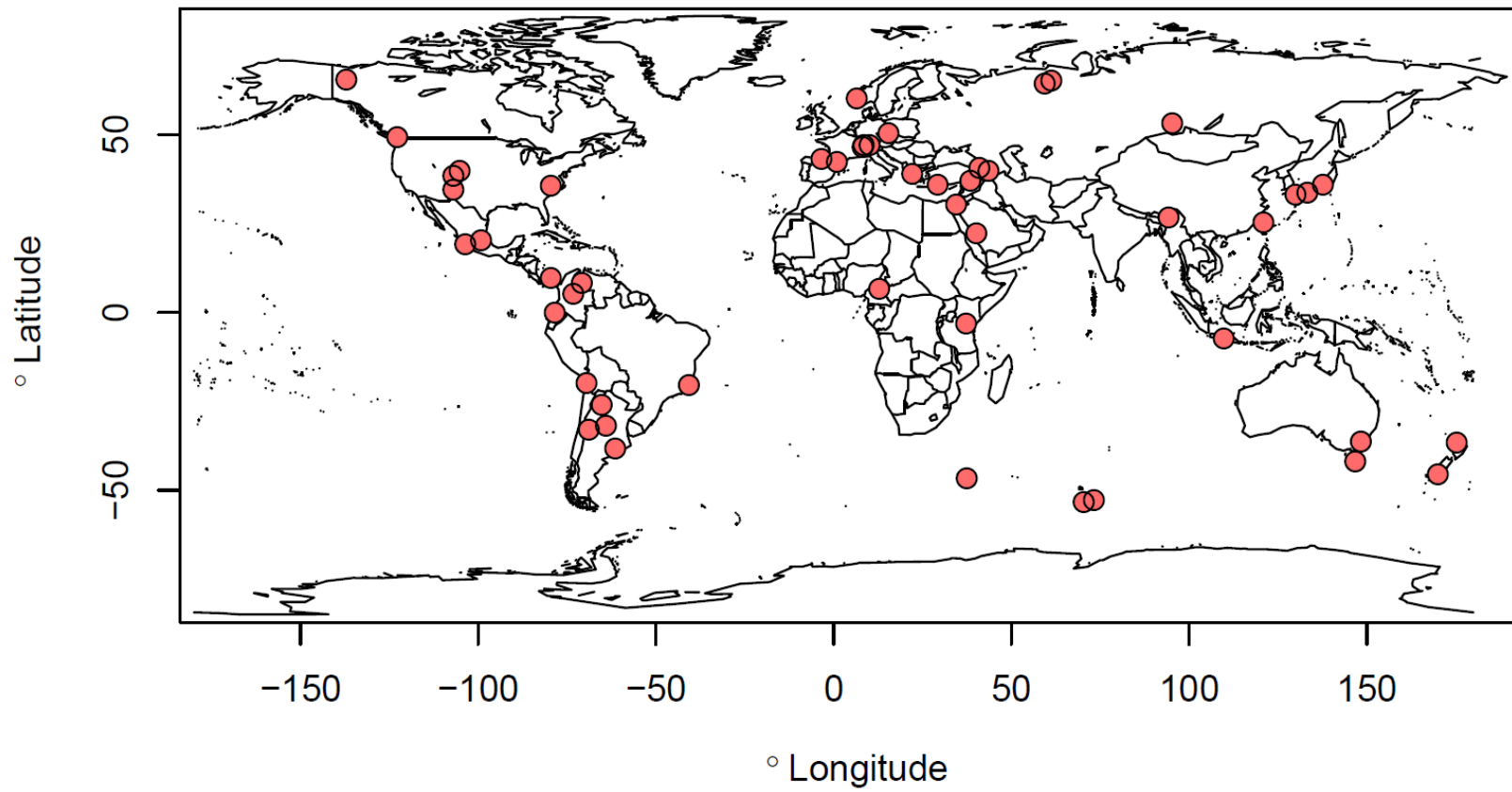


Figure 1



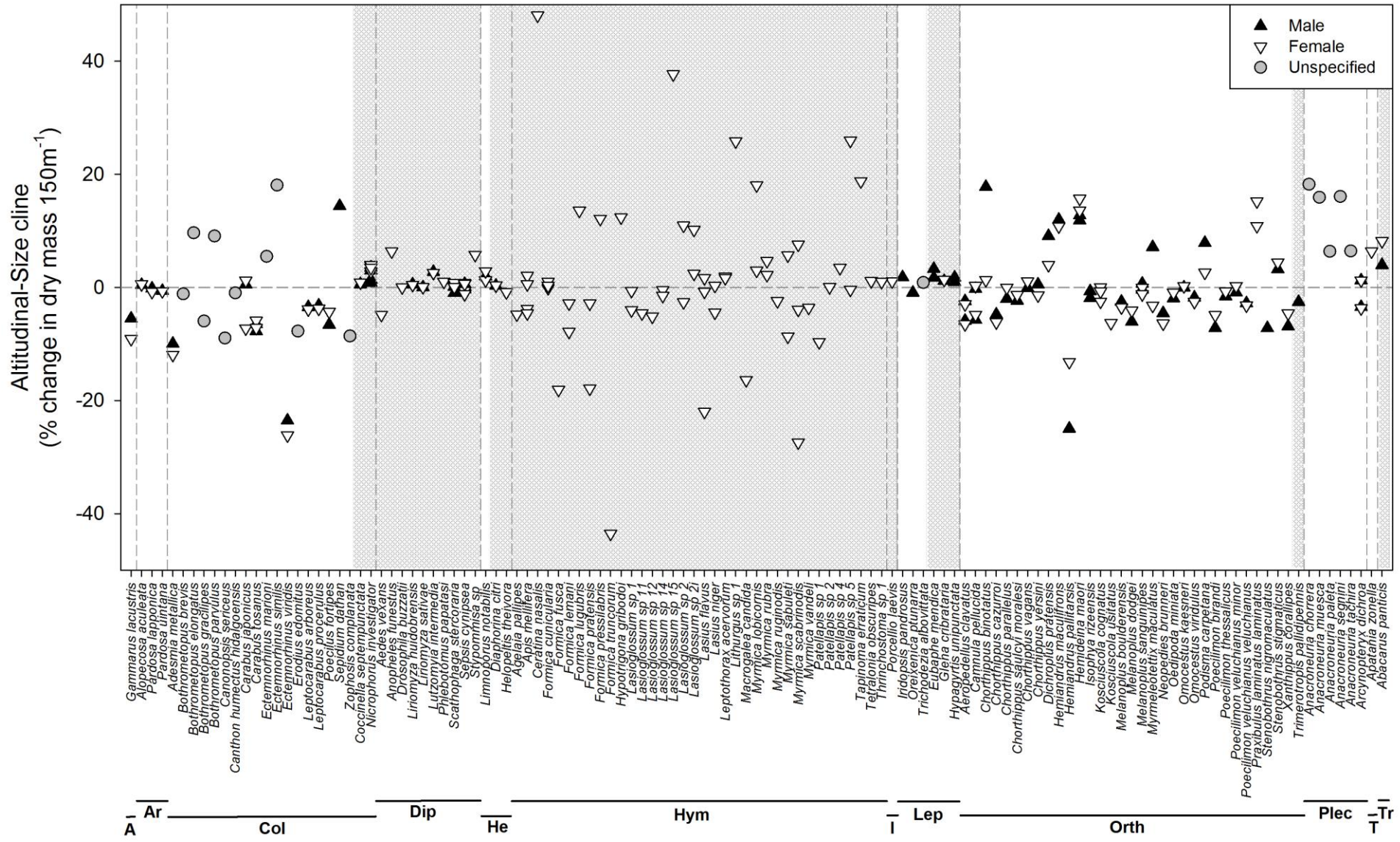


Figure 3

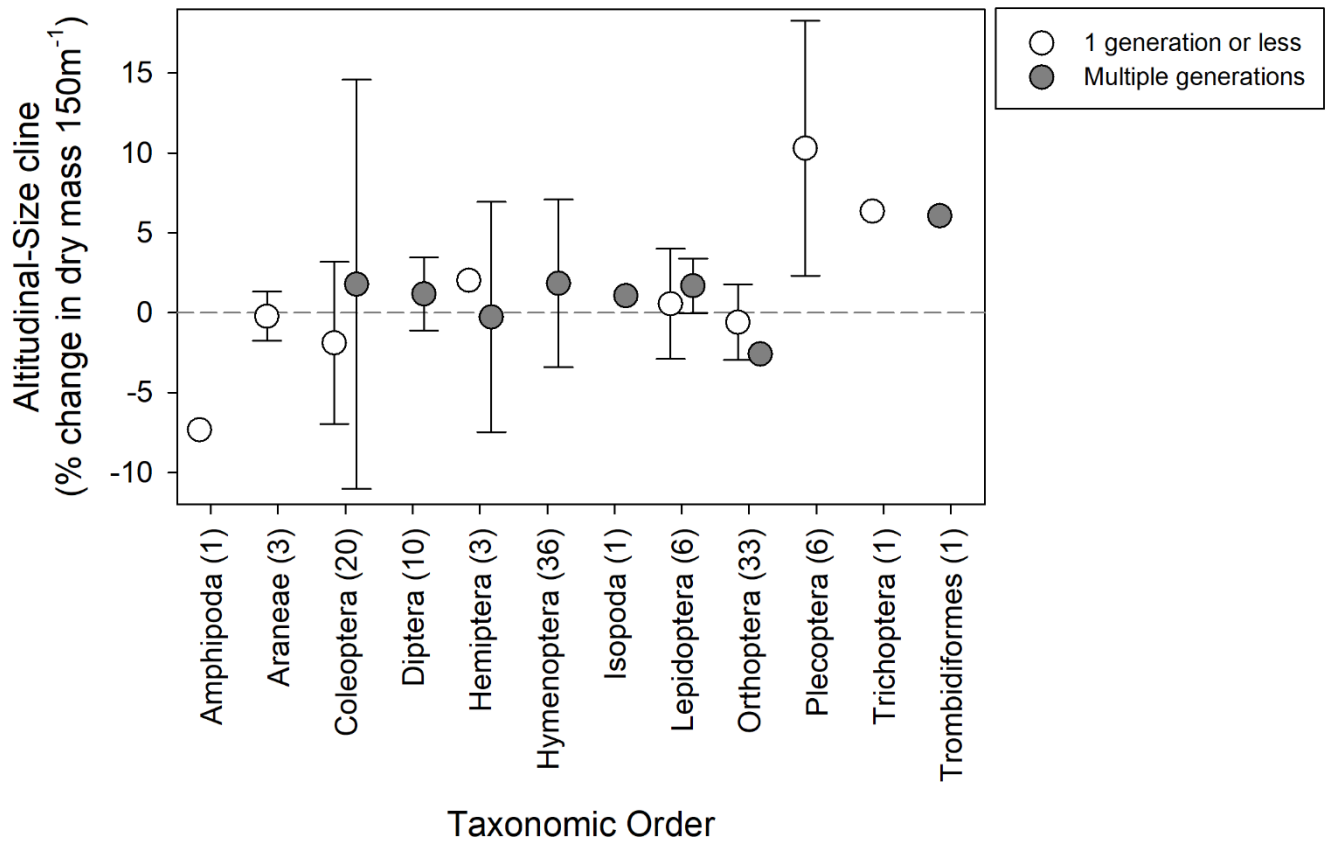


Figure 4

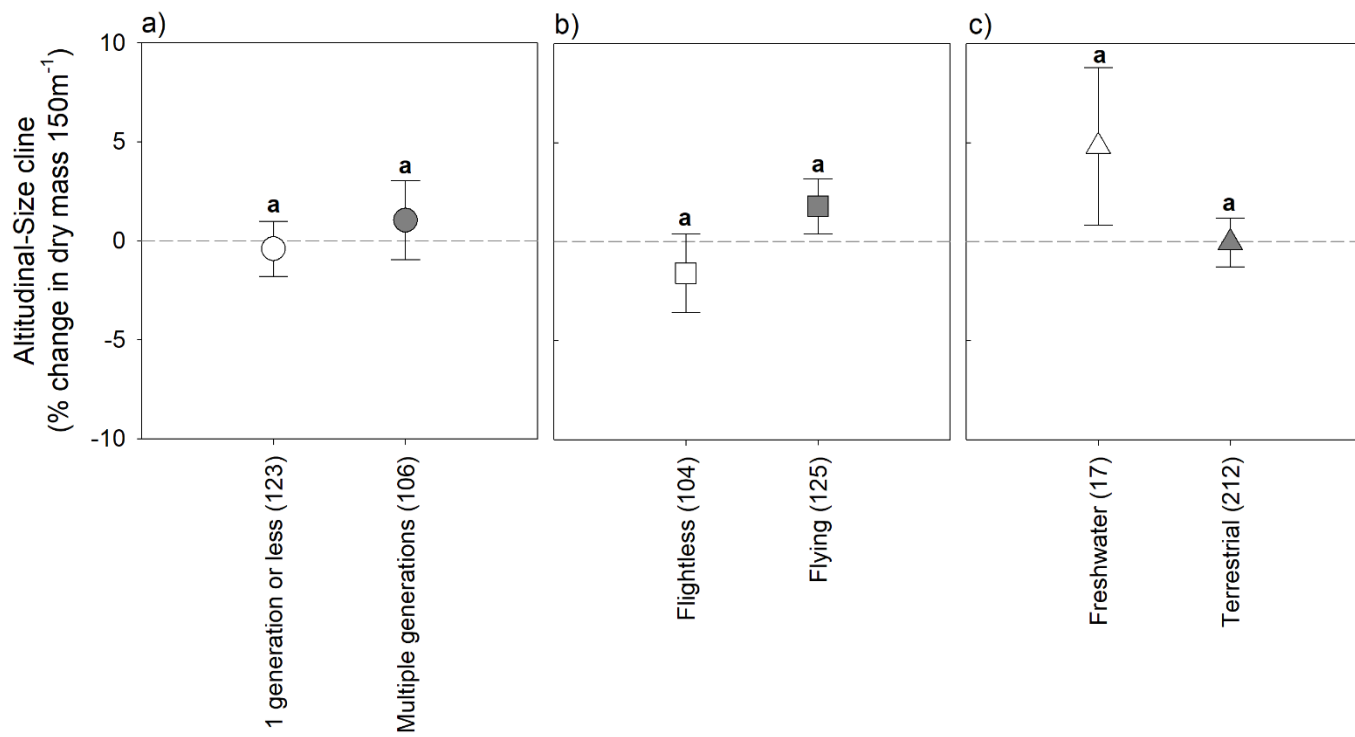


Figure 5

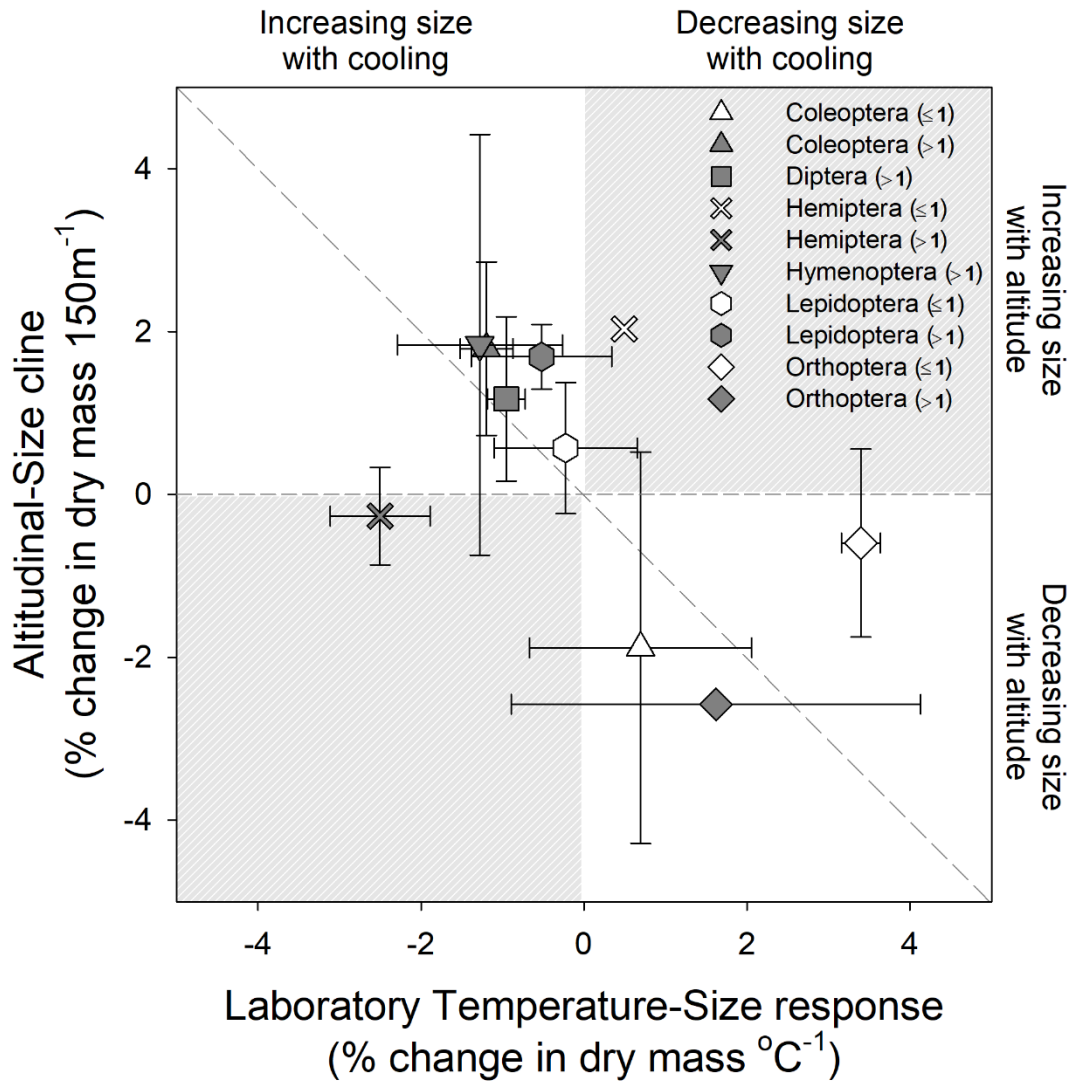


Figure 6