



University of Dundee

Variations in disability and quality of life with age and sex between eight Lower and Middle Income Countries

Gomez-Olive, Francesc Xavier ; Schröders, Julia ; Aboderin, Isabella ; Byass, Peter; Chatterji, Somnath ; Kahn, Kathleen; Kowal, Paul ; Nathan, Rose ; Ng, Nawi ; Razzaque, Abdur ; Sankoh, Osman; Streatfield, Peter K ; Tollman, Stephen; Wilopo, Siswanto A ; Witham, Miles

Published in:
BMJ Global Health

DOI:
[10.1136/bmjgh-2017-000508](https://doi.org/10.1136/bmjgh-2017-000508)

Publication date:
2017

Document Version
Publisher's PDF, also known as Version of record

[Link to publication in Discovery Research Portal](#)

Citation for published version (APA):

Gomez-Olive, F. X., Schröders, J., Aboderin, I., Byass, P., Chatterji, S., Kahn, K., ... Witham, M. D. (2017). Variations in disability and quality of life with age and sex between eight Lower and Middle Income Countries: data from the INDEPTH WHO-SAGE collaboration. *BMJ Global Health*, 2(4), [e000508]. DOI: 10.1136/bmjgh-2017-000508

General rights

Copyright and moral rights for the publications made accessible in Discovery Research Portal are retained by the authors and/or other copyright owners and it is a condition of accessing publications that users recognise and abide by the legal requirements associated with these rights.

- Users may download and print one copy of any publication from Discovery Research Portal for the purpose of private study or research.
- You may not further distribute the material or use it for any profit-making activity or commercial gain.
- You may freely distribute the URL identifying the publication in the public portal.

Variations in disability and quality of life with age and sex between eight lower income and middle-income countries: data from the INDEPTH WHO-SAGE collaboration

Francesc Xavier Gomez-Olive,¹ Julia Schröders,² Isabella Aboderin,^{3,4,5} Peter Byass,^{1,2} Somnath Chatterji,⁶ Justine I Davies,^{1,7} Cornelius Debuur,⁸ Siddhivinayak Hirve,^{6,9} Abraham Hodgson,⁸ Sanjay Juvekar,^{9,10} Kathleen Kahn,^{1,2,10} Paul Kowal,⁶ Rose Nathan,¹¹ Nawi Ng,² Abdur Razzaque,¹² Osman Sankoh,^{10,13,14} Peter K Streatfield,¹² Stephen M Tollman,^{1,2,10} Siswanto A Wilopo,¹⁵ Miles D Witham^{1,16}

To cite: Gomez-Olive FX, Schröders J, Aboderin I, *et al*. Variations in disability and quality of life with age and sex between eight lower income and middle-income countries: data from the INDEPTH WHO-SAGE collaboration. *BMJ Glob Health* 2017;**2**:e000508. doi:10.1136/bmjgh-2017-000508

Handling editor Seye Abimbola

► Additional material is published online only. To view please visit the journal online (<http://dx.doi.org/10.1136/bmjgh-2017-000508>).

Received 3 August 2017
Revised 2 November 2017
Accepted 10 November 2017



CrossMark

For numbered affiliations see end of article.

Correspondence to

Dr Miles D Witham;
m.witham@dundee.ac.uk

ABSTRACT

Background Disability and quality of life are key outcomes for older people. Little is known about how these measures vary with age and gender across lower income and middle-income countries; such information is necessary to tailor health and social care policy to promote healthy ageing and minimise disability.

Methods We analysed data from participants aged 50 years and over from health and demographic surveillance system sites of the International Network for the Demographic Evaluation of Populations and their Health Network in Ghana, Kenya, Tanzania, South Africa, Vietnam, India, Indonesia and Bangladesh, using an abbreviated version of the WHO Study on global AGEing survey instrument. We used the eight-item WHO Quality of Life (WHOQoL) tool to measure quality of life and the WHO Disability Assessment Schedule, version 2 (WHODAS-II) tool to measure disability. We collected selected health status measures via the survey instrument and collected demographic and socioeconomic data from linked surveillance site information. We performed regression analyses to quantify differences between countries in the relationship between age, gender and both quality of life and disability, and we used anchoring vignettes to account for differences in interpretation of disability severity.

Results We included 43 935 individuals in the analysis. Mean age was 63.7 years (SD 9.7) and 24 434 (55.6%) were women. In unadjusted analyses across all countries, WHOQoL scores worsened by 0.13 points (95% CI 0.12 to 0.14) per year increase in age and WHODAS scores worsened by 0.60 points (95% CI 0.57 to 0.64). WHODAS-II and WHOQoL scores varied markedly between countries, as did the gradient of scores with increasing age. In regression analyses, differences were not fully explained by age, socioeconomic status, marital status, education or health factors. Differences in disability scores between countries were not explained by differences in anchoring vignette responses.

Key questions

What is already known about this topic?

- Disability and quality of life are key outcomes in promoting healthy ageing, and worse quality of life and disability are both associated with higher mortality.
- Little is known about their determinants in lower income and middle-income countries.

What are the new findings?

- Marked differences exist between the analysed sites in how both disability and quality of life change with age, with significant differences between sexes.
- The underlying causes of these differences are not clear.

Recommendations for policy

- By increasing awareness of the importance of quality of life and disability in low-income and middle-income countries.
- Thus aiding countries in their efforts to promote healthy ageing and minimise the progression of disability as populations age.

Conclusions The relationship between age, sex and both disability and quality of life varies between countries. The findings may guide tailoring of interventions to individual country needs, although these associations require further study.

INTRODUCTION

Accelerated population ageing is now well established in many lower and middle-income countries (LMICs), leading to dramatic

increases in both the absolute number of older people and the proportion of older people in LMICs.¹ Data from high-income countries (HICs) show worsening disability with age^{2,3} and differences in disability-free life expectancy between men and women.⁴ In HICs, disability and quality of life are the outcomes that are most important to older people themselves.⁵ Maintenance of ability and good quality of life are also important goals for government and society, as intrinsically worthwhile to citizens and also because self-reported disability and quality of life both strongly predict risk of death^{6,7} and because of the need to mitigate spiralling health and social care costs for those with disability.⁸ As LMICs continue to transition socioeconomically and demographically, maintenance of ability and quality of life will likely become a key focus for governments working towards developing responsive health and long-term care systems.⁹

Although some data are available on disability and quality of life, and their determinants, within individual LMICs,^{10–18} very little work has been done to explore if these metrics are experienced by ageing populations in different countries in the same way. Such knowledge would inform debates on potential cross-cutting approaches to the development of health and long-term care systems and on key individual and structural-level factors (eg, variations in comorbid disease patterns and socioeconomic status) driving differential experiences of health and well-being in old age across societies. Understanding between-country differences would provide valuable insights into how countries might shape economic, health and social policies to improve disability and quality of life.

The aim of this paper is therefore to describe how self-reported disability and self-reported quality of life vary with age and sex across eight LMICs in Africa and Asia and to explore what other factors might explain differences in disability and quality of life using data from the International Network for the Demographic Evaluation of Populations and their Health (INDEPTH) and WHO Study on global AGEing (WHO-SAGE) dataset.

METHODS

Populations and dataset

This analysis used data from the multicentre INDEPTH WHO-SAGE study, conducted in 2006–2007 across eight health and demographic surveillance system (HDSS) sites in LMICs in Africa (Ghana, Kenya, Tanzania and South Africa) and Asia (Bangladesh, Indonesia, India and Vietnam) using a short version of the national WHO-SAGE questionnaire. The methods for the study have been described in detail previously,¹⁹ but in brief, individuals aged 50 years and over from eight HDSS sites of the INDEPTH (www.indepth-network.org) were selected for interview. Participants had to be registered on the HDSS to be invited and had to be able to give informed consent to participate. Participants with dementia or difficulty communicating were not excluded

on the basis of these impairments unless they precluded giving consent or completing the questionnaires. A total of 58 004 individuals were invited to participate; 46 269 agreed to take part. All 2334 participants with incomplete demographic or socioeconomic data were excluded from the final dataset as previously described²⁰; complete data were available for 43 935 individuals who form the dataset analysed in this study.

Variables

The survey used the abbreviated INDEPTH WHO-SAGE survey instrument, which has been described previously.²⁰ We measured disability using the validated WHO Disability Assessment Schedule, version 2 (WHODAS-II) disability score.²¹ This score measures impairments in selected basic and instrumental activities of daily living across six domains (mobility, self-care, cognition, interaction with others, life activities and social participation); measures are summed to form a composite score, then normalised to a 0–100 scale, where 0 represents no disability and 100 represents the worst disability. We measured quality of life using the validated eight-item EUROHIS-WHOQoL score,²² an abbreviated version of the 26-item WHOQoL-BREF score.²³ Each item is scored on a five-point scale and summed; for this analysis, we then normalised the score to a 0–100 scale, with 100 denoting the best quality of life. Previous studies have shown good agreement between the EUROHIS-WHOQoL and the WHOQoL-BREF across a number of countries.²⁴

To account for differences in interpretation and perception of disability severity between individuals (which may vary between countries, gender, age or other factors), one in four participants in six of the participating sites (all except Ghana and South Africa) answered anchoring vignette questions. As described previously,¹⁹ these vignettes allowed individuals to score a concrete example of disability on the same scales as used in WHODAS, allowing the WHODAS responses for each individual to be calibrated against standard scenarios of varying severity. The aim of this approach was to account for differences in how a given level of disability (and hence potentially their own level of disability) would be perceived and scored by different individuals. Each vignette posed a scenario based on a daily activity, and then asked the respondents how much difficulty the person in the vignette had with each activity on a five-point scale (1=no problem; 5=extreme problem or unable to perform activity). Previous work on related vignettes (covering mobility and cognition) suggests that although the psychometric performance of vignettes in WHO-SAGE is imperfect at predicting anchoring in absolute terms, the vignettes still provide information on how individuals order severity of conditions, particularly for self-care.²⁵ The vignettes covered: a person able to wash, bathe and dress himself slowly; a person housebound because of arthritis who cannot dress and needs help with washing; a person able to self-care except for occasional help with bathing and dressing when he has back

pain; and a person requiring help with all care because of paralysis from the neck down. For each vignette, we asked a question on ability to self-care and a question on maintaining appearance, corresponding to questions asked on self-care and appearance within WHODAS-II. These data were not available for Ghana or South Africa. To determine whether differences in perception of impairment affected how disability scores varied between countries, we used data from these four vignettes (eight questions) in multivariable analyses.

We determined family size as the total number of people in the household at the most recent HDSS survey round. We derived a measure of socioeconomic status as quintiles of a wealth index as previously described.²⁰ We dichotomised living status as living alone or living with others; we dichotomised marital status as either currently in a partnership or not (encompassing all of never married, widowed and divorced/separated). We categorised years of education as no formal education, primary or less than 6 years of formal education and six or more years of formal education; this categorisation reflected the questions on education asked at each site. We took responses for selected markers of health status from five-point scales (1=no problem; 5=extreme problem or unable to do) for problems in the last 30 days with: feeling sad, low or depressed; problems with worry or anxiety; problems with bodily aches or pain; problems with bodily discomfort; difficulties concentrating or remembering things; problems in learning a new task; problems seeing a person or object at 20 m (far vision); and problems seeing an object at arms' length (near vision).

Analyses

We generated descriptive statistics by age and sex category for WHODAS-II and WHO Quality of Life (WHOQoL) score (using age categories in 5-year bands from 50 years to 54 years, from 75 years to 79 years, then 80 years and over). We used medians for WHODAS-II data as these were not normally distributed. We plotted scores against age category for each country, with men and women plotted separately.

To examine associations of potential explanatory variables with quality of life, we undertook linear regression modelling with forced entry of variables using WHOQoL as the dependent variable. Both health status and disability would be expected to be associated with quality of life. However, because health status markers and WHODAS-II scores were highly correlated,²⁰ we chose not to enter both into the same model. Instead, we ran three models: one with WHODAS-II as an independent variable, another with answers to individual health status questions and a third using a summary health status score, previously derived and weighted using Item Response Theory.²⁰ For analysis of potential explanatory variables with disability, we used WHODAS-II as the dependent variable. To account for the non-normal distribution in analysis of WHODAS-II, we used generalised linear modelling with a Tweedie probability distribution (power 1.9)

and identity link. This distribution was selected due to the large number of individuals with a score of zero, plus significant skewing of the non-zero values. A simple linear regression could therefore not be employed even after transforming the WHODAS-II scores, and we therefore selected this Tweedie distribution as the closest approximation to the observed distribution of the WHODAS-II scores. All regression models included population weighting factors for age and sex and included terms to explore the interaction between age and country, sex and country, and age, sex and country with the dependent variable. We used South Africa as the referent country in each analysis comparing other countries with South Africa. South Africa was the country with the lowest life expectancy and highest mortality in 2006/2007 yet had the highest levels of gross domestic product per capita, urbanisation and industrialisation.²⁶ As such, it provides a comparator at one end of multiple distributions, particularly those involving development and industrialisation that other countries are moving towards. We decided the choice of explanatory variables for both models a priori; we included factors likely to be on a causal pathway or representing unmeasured constructs on a causal pathway (eg, age as a proxy for disease and frailty; family size and marital status as possible proxies for social support). For both sets of models, variables included age, sex, country, socioeconomic status, marital status, living arrangements and family size. Data on comorbid disease were not available in the INDEPTH WHO-SAGE dataset. The health status markers included in the WHOQoL analyses were anxiety and depression, and selected measures of health including vision problems, pain and discomfort and problems concentrating and learning a new task. We included education in the WHOQoL analysis given previous work linking education level to life satisfaction.

We constructed a separate regression model for the dataset (n=8201) where vignette data on self-care were available. This analysis examined determinants of disability as above, with and without the vignette results, to test whether inclusion of the vignette data changed the association between baseline variables and WHODAS-II scores. We calculated the difference for each individual between the vignette question score and the score on the corresponding WHODAS disability domain; we then included this difference for each of the eight vignette questions in the model as a covariate in multivariable analyses; scores from different vignette questions were not combined prior to use in the regression analysis. We used generalised linear modelling using a Tweedie distribution as above with log-link for this analysis. We undertook all analyses using SPSS V.24; we took a two-sided P value of <0.05 as statistically significant for all analyses.

RESULTS

We included data from a total of 43 935 people in the current analysis (table 1). Figure 1 shows the relationships, separately for men and women, between age and

Table 1 Baseline details of included populations

| | Bangladesh | Ghana | Indonesia | India | Kenya | Tanzania | Vietnam | South Africa | All |
|--|---------------------|---------------------|-------------------|---------------------|--------------------|--------------------|--------------------|--------------------|--------------------|
| N | 4004 | 4294 | 11753 | 4514 | 1991 | 5024 | 8516 | 3839 | 43935 |
| Mean age (years) (SD) | 62.1 (9.0) | 62.6 (9.0) | 64.1 (9.4) | 62.9 (8.9) | 59.0 (8.9) | 62.5 (9.2) | 65.3 (10.7) | 66.5 (10.6) | 63.7 (9.7) |
| 50–54 years (%) | 1008 (25.2) | 918 (21.4) | 2415 (20.5) | 800 (17.7) | 830 (41.7) | 1139 (22.7) | 1721 (20.2) | 608 (15.8) | 9439 (21.5) |
| 55–59 years (%) | 804 (20.1) | 909 (21.2) | 1929 (16.4) | 968 (21.4) | 488 (24.5) | 1052 (20.9) | 1492 (17.5) | 607 (15.8) | 8249 (18.8) |
| 60–64 years (%) | 762 (19.0) | 851 (19.8) | 1875 (16.0) | 856 (19.0) | 290 (14.6) | 907 (18.1) | 1127 (13.2) | 546 (14.2) | 7214 (16.4) |
| 65–69 years (%) | 591 (14.8) | 701 (16.3) | 2170 (18.5) | 835 (18.5) | 149 (7.5) | 749 (14.9) | 1126 (13.2) | 598 (15.6) | 5919 (13.5) |
| 70–74 years (%) | 414 (10.3) | 390 (9.1) | 1637 (13.9) | 540 (12.0) | 81 (4.1) | 572 (11.4) | 1152 (13.5) | 509 (13.3) | 5295 (12.1) |
| 75–79 years (%) | 273 (6.8) | 333 (7.8) | 1007 (8.6) | 288 (6.4) | 67 (3.4) | 338 (6.7) | 930 (10.9) | 520 (13.5) | 3756 (8.5) |
| 80+ years (%) | 152 (3.8) | 192 (4.5) | 720 (6.1) | 227 (5.0) | 86 (4.3) | 267 (5.3) | 968 (11.4) | 451 (11.7) | 3063 (7.0) |
| Female sex (%) | 2005 (50.1) | 2660 (61.9) | 6333 (53.9) | 2163 (47.9) | 693 (34.8) | 2636 (52.5) | 5054 (59.3) | 2890 (75.3) | 24434 (55.6) |
| Mean WHOQoL score (SD) | 22.6 (5.6) | 20.7 (4.8) | 16.7 (3.4) | 16.2 (3.0) | 18.4 (4.2) | 20.8 (3.6) | 20.4 (4.3) | 20.0 (4.4) | 19.1 (4.6) |
| Median WHODAS score (IQR) | 33.3 (16.7–49.3) | 27.8 (16.7–38.9) | 8.3 (2.8–22.2) | 22.2 (13.9–33.3) | 13.9 (2.8–27.8) | 11.1 (2.8–25.0) | 16.7 (5.6–36.1) | 22.2 (8.3–33.3) | 16.7 (5.6–33.3) |
| No formal education (%) | 2257 (56.4) | 0 (0) | 3440 (29.3) | 259 (5.7) | 566 (28.4) | 1983 (39.5) | 877 (10.3) | 2510 (65.4) | 11892 (27.1) |
| Primary or <6 years (%) | 1149 (28.7) | 3980 (92.7) | 6459 (55.0) | 3221 (71.4) | 1125 (56.5) | 2836 (56.4) | 4182 (49.1) | 746 (19.4) | 23698 (53.9) |
| 6 years or more (%) | 598 (14.9) | 314 (7.3) | 1854 (15.8) | 1034 (22.9) | 300 (15.1) | 205 (4.1) | 3457 (40.6) | 583 (15.2) | 8345 (19.0) |
| Married or cohabiting (%) | 3049 (76.1) | 2300 (53.6) | 8400 (71.5) | 3595 (79.6) | 1369 (68.8) | 3351 (66.7) | 5882 (69.1) | 1775 (46.2) | 29721 (67.6) |
| Living alone (%) | 112 (2.8) | 199 (4.6) | 908 (7.7) | 99 (2.2) | 479 (24.1) | 109 (2.2) | 565 (6.6) | 219 (5.7) | 2690 (6.1) |
| Quintile of socioeconomic status (%) | | | | | | | | | |
| (Poorest) 1 | 611 (15.3) | 1210 (28.2) | 2394 (20.4) | 514 (11.4) | 483 (24.3) | 950 (18.9) | 1209 (14.2) | 616 (16.0) | 7987 (18.2) |
| 2 | 667 (16.7) | 1064 (24.8) | 2317 (19.7) | 686 (15.2) | 302 (15.2) | 982 (19.5) | 1548 (18.2) | 728 (19.0) | 8294 (18.9) |
| 3 | 701 (17.5) | 958 (22.3) | 2390 (20.3) | 994 (22.0) | 406 (20.4) | 1056 (21.0) | 1787 (21.0) | 739 (19.2) | 9031 (20.6) |
| 4 | 930 (23.2) | 808 (18.8) | 2387 (20.3) | 963 (21.3) | 422 (21.2) | 2036 (40.5) | 1996 (23.4) | 812 (21.2) | 10354 (23.6) |
| (Richest) 5 | 1095 (27.3) | 254 (5.9) | 2265 (19.3) | 1357 (30.1) | 378 (19.0) | 0 (0) | 1976 (23.2) | 944 (24.6) | 8269 (18.8) |
| Mean family size (SD) | 5.4 (2.5) | 6.6 (3.9) | 3.5 (1.7) | 6.9 (3.5) | 4.1 (3.2) | 10.2 (5.7) | 4.2 (2.0) | 7.1 (4.0) | 5.6 (3.9) |
| On a scale of 1 best/no problem to 5=worst/cannot do or severe problem | | | | | | | | | |
| Median depressive symptoms (IQR) | 3 (2–4) | 2 (1–3) | 1 (1–2) | 2 (1–2) | 2 (1–2) | 1 (1–2) | 1 (1–2) | 2 (1–3) | 2 (1–2) |
| Median anxiety symptoms (IQR) | 4 (2–4) | 2 (2–3) | 1 (1–2) | 2 (1–3) | 1 (1–2) | 1 (1–2) | 1 (1–3) | 3 (1–4) | 2 (1–3) |
| Median bodily pain (IQR) | 3 (2–4) | 2 (2–3) | 2 (1–3) | 2 (1–3) | 2 (1–3) | 2 (1–3) | 2 (2–4) | 3 (1–3) | 2 (1–3) |
| Median discomfort (IQR) | 3 (2–4) | 2 (2–3) | 2 (1–3) | 2 (1–3) | 2 (1–3) | 2 (1–3) | 2 (1–4) | 3 (1–3) | 2 (1–3) |
| Median problems concentrating (IQR) | 3 (1–4) | 2 (1–3) | 2 (1–2) | 2 (1–2) | 1 (1–3) | 1 (1–2) | 2 (1–3) | 2 (1–3) | 2 (1–3) |
| Median problems task learning (IQR) | 2 (1–3) | 2 (2–3) | 2 (1–3) | 2 (1–3) | 1 (1–2) | 1 (1–2) | 2 (1–3) | 2 (1–3) | 2 (1–3) |
| Median problems far vision (IQR) | 2 (1–4) | 2 (1–3) | 2 (1–3) | 2 (1–3) | 1 (1–2) | 1 (1–3) | 1 (1–3) | 1 (1–2) | 2 (1–3) |
| Median problems near vision (IQR) | 2 (1–3) | 1 (1–2) | 2 (1–3) | 2 (1–3) | 2 (1–3) | 1 (1–2) | 1 (1–2) | 1 (1–2) | 1 (1–2) |

WHODAS, WHO Disability Assessment Schedule; WHOQoL, WHO Quality of Life.

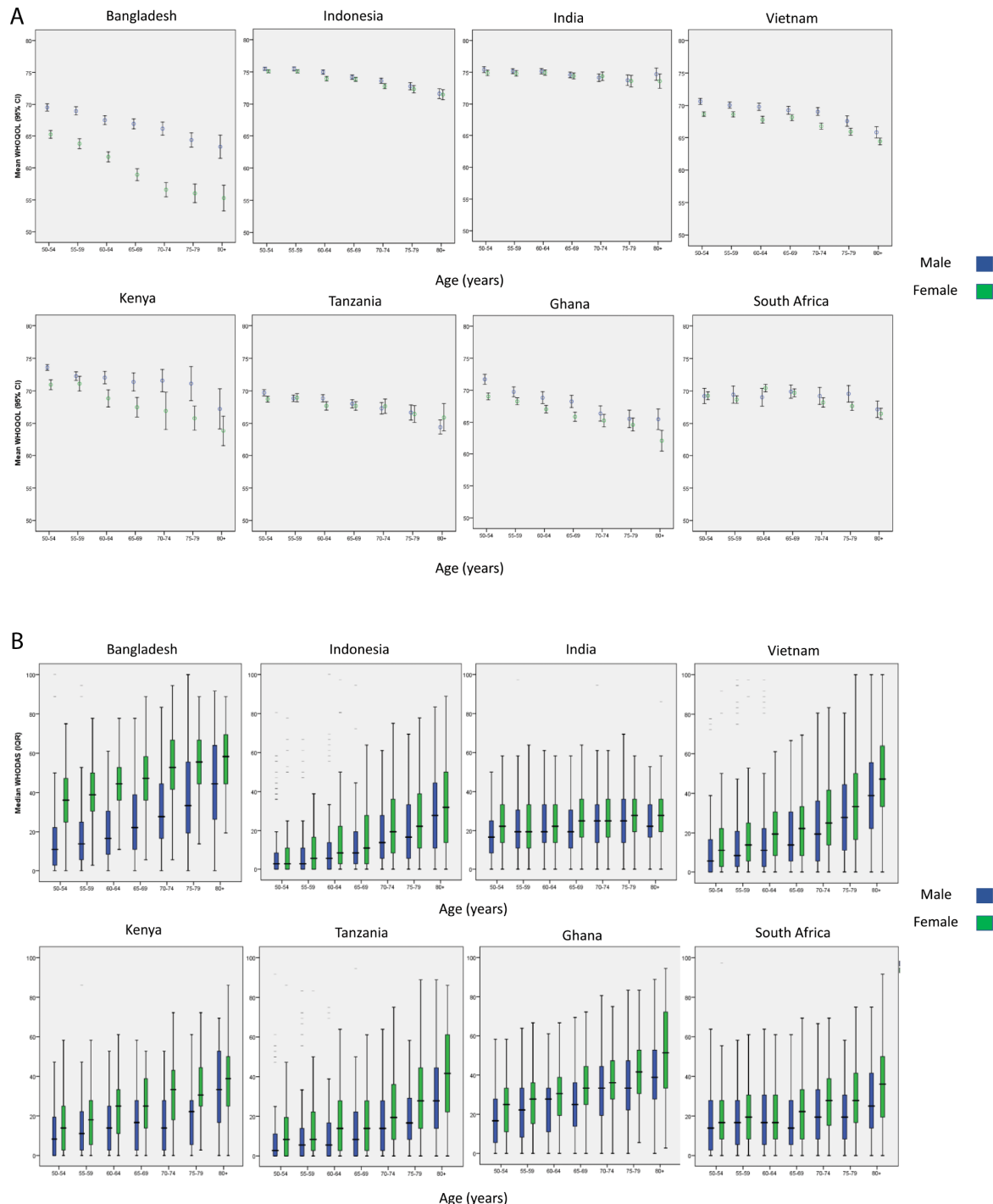


Figure 1 (A) Mean WHOQoL scores by age category, country and sex. Error bars represent 95% CI. WHOQoL transformed to 0–100 scale (100=best quality of life). (B) Median WHODAS scores by age category, country and sex. Boxes represent interquartile range. WHODAS score transformed to 0–100 scale (100=worst disability). WHODAS, WHO Disability Assessment Schedule; WHOQoL, WHO Quality of Life.

quality of life (figure 1A) and between age and disability (figure 1B), across the eight included sites. Unadjusted analysis showed a mean worsening in WHOQoL score across all sites of 0.13 points (95% CI 0.12 to 0.14) for every 1 year increase in age. For WHODAS-II, scores worsened by 0.60 points (95% CI 0.57 to 0.64) for every year increase in age. These mean results mask substantial variability in the relationship between covariates

and these outcomes between countries, as shown by the results of within-country regression analyses in online supplementary tables 1 and 2. Most sites showed higher disability levels among women than among men at ages 50–54 years, with an even greater disparity between the sexes at age 80+ years. The exception was the Bangladesh site, where a very large sex difference in disability at ages 50–54 years was somewhat narrower at age 80+ years. The

spread of disability scores across sites was much greater at age 50–54 years for women than for men and remained greater across the age range, but for women, disability scores converged between sites in the oldest age categories. For quality of life, most sites showed similar scores for men and women at all ages. The exception, again, was the Bangladesh site, where quality of life was worse for women across ages, particularly so among the oldest-old. Scores for both sexes showed some decline and greater

cross-site heterogeneity with age. The India and Indonesia sites, which maintained the highest scores of all sites at all ages, showed a less marked decline in scores with age.

Tables 2 and 3 show the results of the regression models, showing which variables are associated with quality of life and disability levels and highlighting the variability between countries in how quality of life and disability change with age. For quality of life, disability, marital status,

Table 2 Regression model for associations with self-reported quality of life (WHOQoL)

| Variable | B (SE) | P |
|----------------------|----------------|--------|
| Age (per year) | 0.026 (0.017) | 0.12 |
| Country of residence | | |
| Bangladesh | 2.324 (1.373) | 0.09 |
| Ghana | 7.988 (1.413) | <0.001 |
| Indonesia | 3.496 (1.198) | 0.004 |
| India | 6.914 (1.350) | <0.001 |
| Kenya | 6.454 (1.607) | <0.001 |
| Tanzania | 2.401 (1.347) | 0.08 |
| Vietnam | −2.131 (1.258) | 0.09 |
| South Africa | Referent | – |
| Female sex | −0.010 (1.259) | 0.99 |
| Education | | |
| None | −0.901 (0.098) | <0.001 |
| <6 years | −0.615 (0.080) | <0.001 |
| ≥6 years | Referent | – |
| Marital status | −0.862 (0.069) | <0.001 |
| Living arrangements | 0.222 (0.123) | 0.07 |
| Socioeconomic status | | |
| 1 (lowest) | Referent | – |
| 2 | 0.507 (0.087) | <0.001 |
| 3 | 1.074 (0.086) | <0.001 |
| 4 | 1.328 (0.084) | <0.001 |
| 5 (highest) | 2.405 (0.092) | <0.001 |
| Family size | −0.032 (0.009) | <0.001 |
| WHODAS | −0.180 (0.002) | <0.001 |

Age*sex*country interactions

| | Age*country | | Sex*country | | Age*sex*country | |
|--------------|----------------|--------|----------------|--------|-----------------|--------|
| | B (SE) | P | B (SE) | P | B (SE) | P |
| Bangladesh | −0.057 (0.021) | 0.007 | 9.742 (1.748) | <0.001 | −0.186 (0.019) | <0.001 |
| Ghana | −0.109 (0.022) | <0.001 | −2.731 (1.731) | 0.12 | 0.034 (0.019) | 0.07 |
| Indonesia | 0.004 (0.019) | 0.83 | −1.508 (1.431) | 0.29 | 0.032 (0.011) | 0.003 |
| India | −0.021 (0.021) | 0.31 | 0.014 (1.705) | 0.99 | 0.011 (0.019) | 0.55 |
| Kenya | −0.071 (0.026) | 0.007 | 0.250 (2.188) | 0.91 | −0.018 (0.030) | 0.54 |
| Tanzania | −0.062 (0.021) | 0.003 | −5.638 (1.639) | 0.001 | 0.103 (0.017) | <0.001 |
| Vietnam | 0.024 (0.019) | 0.23 | −2.978 (1.476) | 0.04 | 0.041 (0.012) | 0.001 |
| South Africa | Referent | – | Referent | – | 0.013 (0.019) | 0.49 |

B, unstandardised coefficient; WHODAS, WHO Disability Assessment Schedule; WHOQoL, WHO Quality of Life.

Table 3 Regression model for associations with self-reported disability (WHODAS)

| Variable | B (SE) | | P | | | |
|-------------------------------------|-----------------|--------|-----------------|------|-----------------|-------|
| Age (per year) | 0.218 (0.102) | | 0.03 | | | |
| Country of residence | | | | | | |
| Bangladesh | −32.589 (8.235) | | <0.001 | | | |
| Ghana | −21.923 (9.519) | | 0.02 | | | |
| Indonesia | −27.450 (6.549) | | <0.001 | | | |
| India | 2.295 (8.303) | | 0.78 | | | |
| Kenya | −18.299 (8.851) | | 0.04 | | | |
| Tanzania | −22.579 (7.022) | | 0.001 | | | |
| Vietnam | −30.730 (7.160) | | <0.001 | | | |
| South Africa | Referent | | – | | | |
| Female sex | −10.020 (7.647) | | 0.19 | | | |
| Marital status | 2.215 (0.384) | | <0.001 | | | |
| Living arrangements | −1.249 (0.666) | | 0.06 | | | |
| Socioeconomic status | | | | | | |
| 1 (lowest) | Referent | | – | | | |
| 2 | −0.632 (0.416) | | 0.13 | | | |
| 3 | −0.833 (0.405) | | 0.04 | | | |
| 4 | −0.591 (0.397) | | 0.14 | | | |
| 5 (highest) | −1.339 (0.406) | | 0.001 | | | |
| Family size | 0.031 (0.044) | | 0.48 | | | |
| Age*sex*country interactions | | | | | | |
| | Age*country | | Sex*country | | Age*sex*country | |
| | B (SE) | P | B (SE) | P | B (SE) | P |
| Bangladesh | 0.584 (0.136) | <0.001 | 36.701 (14.663) | 0.01 | −0.100 (0.209) | 0.63 |
| Ghana | 0.445 (0.156) | 0.004 | 13.233 (12.621) | 0.29 | 0.027 (0.169) | 0.87 |
| Indonesia | 0.317 (0.105) | 0.003 | 4.371 (8.032) | 0.59 | 0.133 (0.044) | 0.002 |
| India | 0.004 (0.134) | 0.98 | 16.106 (11.195) | 0.15 | −0.056 (0.134) | 0.68 |
| Kenya | 0.251 (0.150) | 0.09 | 0.479 (14.608) | 0.97 | 0.247 (0.220) | 0.26 |
| Tanzania | 0.259 (0.114) | 0.02 | 4.283 (9.014) | 0.64 | 0.158 (0.083) | 0.06 |
| Vietnam | 0.477 (0.116) | <0.001 | 5.332 (8.856) | 0.55 | 0.130 (0.076) | 0.09 |
| South Africa | Referent | – | Referent | – | 0.205 (0.123) | 0.10 |

B, unstandardised coefficient; WHODAS, WHO Disability Assessment Schedule.

education, living arrangements, family size and socioeconomic variables were significantly associated with quality of life in adjusted models; in models where health status was substituted for WHODAS score (online supplementary tables 3 and 4), health status was significantly associated with quality of life. The gradient of WHOQOL score with advancing age was significantly different between South Africa (the referent country) and Bangladesh, Ghana, Kenya and Tanzania, as shown by the significant interaction terms. Similarly, the relationship between sex and WHOQOL score was significantly different for Bangladesh, Tanzania and Vietnam when compared with South Africa as referent. Finally, the magnitude of difference in the age-WHOQOL gradient between men and women was significantly different to South Africa for Bangladesh,

Indonesia, Tanzania and Vietnam, as shown by the significant age*sex*country interaction terms.

Sex, marital status and socioeconomic status were associated with disability scores; the relationship between age and disability across countries was more heterogeneous than seen with age-quality of life gradients; most sites bar India and Kenya showed significant age–disability score interactions. In contrast to quality of life, only Bangladesh showed a significant different in the relationship between disability and sex from that seen in South Africa, and only Indonesia showed a significant different from South Africa when the interaction of age, sex and country was considered.

Table 4 contains results of regression models both including and excluding anchoring vignettes. With the

Table 4 Impact of differences in health status vignette replies on disability scores across countries (n=8201)

| Variable | Without adjusting for vignette differences | | Adjusting for vignette differences | |
|----------------------|--|--------|------------------------------------|--------|
| | B (SE) | P | B (SE) | P |
| Country of residence | | | | |
| Bangladesh | 0.571 (0.067) | <0.001 | 0.442 (0.070) | <0.001 |
| Indonesia | -0.440 (0.051) | <0.001 | -0.551 (0.052) | <0.001 |
| India | 0.268 (0.067) | <0.001 | -0.021 (0.071) | 0.77 |
| Kenya | -0.020 (0.140) | 0.88 | -0.151 (0.141) | 0.28 |
| Tanzania | -0.271 (0.079) | 0.001 | -0.363 (0.084) | 0.003 |
| Vietnam | Referent | - | Referent | - |
| Age | 0.034 (0.002) | <0.001 | 0.030 (0.002) | <0.001 |
| Female sex | 0.277 (0.042) | <0.001 | 0.251 (0.041) | <0.001 |
| Marital status | 0.100 (0.051) | 0.05 | 0.079 (0.051) | 0.12 |
| Living arrangements | -0.027 (0.092) | 0.77 | 0.032 (0.092) | 0.73 |
| Socioeconomic status | -0.027 (0.014) | 0.06 | -0.022 (0.014) | 0.12 |
| Family size | 0.002 (0.007) | 0.81 | 0.003 (0.007) | 0.63 |

No data for Ghana and South Africa.

B, unstandardised coefficient.

exception of India, we found little difference in the country-specific coefficients when the vignettes were included in the model.

DISCUSSION

This analysis shows significant differences in patterns of both disability and quality of life in adults aged 50 years and over between eight LMICs. The overall pattern across sites was of increasing disability and worsening quality of life with age. Comparison of the relationship between these outcome variables and both age and sex showed differences between the pattern in the referent country (South Africa) and some other countries, most notably Bangladesh. The lack of effect of including anchoring vignette results in the analyses suggests that most differences between countries in reported disability were not explained by differences in how levels of impairment were perceived between countries.

Taken together, our analyses show that concepts of the impacts of ageing on quality of life and disability cannot be assumed to be the same across genders and across sociocultural and spatial contexts. This finding has important implications for governments in LMICs who are developing health and long-term care services to cope with increases in life expectancy and a growing population of older people. They also have important implications when considering the wider economy. For example, older people in LMICs contribute substantially to the formal and informal economies. Additionally, older women often provide childcare services that allow younger members of the family to work. These roles require older people to be active. Moreover, younger relatives (also usually women) who need to care for less able older people are often removed from the economy.²⁷

Although this dataset did not include disease-specific diagnoses associated with disability and quality of life decline with increasing age, it is reasonable to assume in this over-50 age group that the observed changes are largely linked to chronic non-communicable conditions, as we discuss further below. Thus, these findings are also a highly relevant background to sustainable development goal (SDG) targets 3.4 and 3.8 (reducing non-communicable disease burdens and providing universal health coverage). Noting our findings that countries had very different patterns of age-related functional decline will be very important in understanding progress towards the SDGs.

We found that the differences in disability and quality of life between sites were not explained by differences in socioeconomic status, differences in age or sex structure or additionally (for quality of life) by variations in disability and selected indicators of health status. Previous analyses of this dataset have shown significant differences in overall health status between countries, with men tending to have better health status than women.²⁰ These results therefore concur with the findings of the current analysis. It remains entirely possible though, as discussed further below, that differences between countries are mediated in part by differences in comorbid disease (a construct different from health status), which were not measured as part of the INDEPTH WHO-SAGE dataset.

Previous work shows a clear trend for increasing disability with age in both HICs and LMICs.⁹ A recent analysis of disability-free life expectancy in six LMICs (including three countries included in the current analysis) showed increasing levels of impairment in basic activities of daily living (ie, a related but distinct construct from that measured by WHODAS-II) with increasing age and with female sex; estimates of the prevalence of at least one

impairment in basic activities of daily living (ADLs) varied from 13% in China to 54% in India.¹⁸ Rates of ADL impairment were higher for women in all six countries; rates of disability varied markedly between countries for those aged 50–54 years (range 5%–30% for men in this age group; range 8%–55% for women) but converged with increasing age (45%–80%) in the over-85 age group for both sexes. Few data are available using WHODAS-II and WHOQoL in HICs, but median WHODAS-II disability scores from an Australian study² were much lower (better) at any given age than those observed for any site in our analysis. Data from a validation study²⁴ of the eight-item WHOQoL tool used in the current study in six middle-income countries to HICs (Israel, Spain, Australia, Brazil, USA and Russia) showed a range of mean scores in non-depressed participants across countries: from 2.98/5 (equivalent to 60/100) in Russia to 3.63/5 (equivalent to 73/100) in Israel. This analysis did not attempt to examine differences with age or sex in a population-representative sample however.

What other factors might explain the differences between sites in our analysis? It is possible that differences in the burden of disability between countries reflect differences in the biological age (as opposed to the chronological age) of participants; in other words, disease burden from both communicable and non-communicable disease may weigh more heavily on some populations at a given age. However, countries with low disability rates (eg, Indonesia and India) in our analysis had life expectancies at age 60 years that were no better (and in some cases worse) than countries with more disability.²⁸ The contrast between Bangladesh and its neighbours is particularly noteworthy, and we cannot explain the magnitude of this difference with the existing data. A number of other factors, unmeasured in this analysis, may contribute to the differences seen—particularly around physical activity, obesity, smoking, alcohol use and burden of particular non-communicable diseases (NCDs) likely to contribute to disability (eg, stroke, chronic obstructive pulmonary disease and heart failure). Environmental factors across the lifecourse, including housing, pollution, and working conditions, may also have an impact, and the ability of healthcare systems to address or mitigate the effects of these factors is also likely to be important. Differences in patterning of these risk factors across the life course may also partly explain the differences in disability scores between men and women, as might differential dropout; those with the most severe disabilities are likely to either die or be unable to participate in surveys. Several other studies have noted higher disability rates at all ages among women,^{4 18 29 30} and a number of possible explanations have been advanced for this. Women have a lower peak muscle mass in early adulthood and may be more likely to suffer from impaired physical function in later life as they can afford to lose less muscle strength before a threshold of functional impairment is reached.³¹ Another possible explanation is that women are able to tolerate a higher burden of frailty before system failure (ie, death) supervenes.³² Differential dropout caused by

shorter life expectancy in men in many countries may then also contribute; the surviving men at any given age are likely to be fitter and less disabled.

Although illness and disability are important factors affecting overall quality of life, other factors (eg, income, social connectedness and mood) are equally, if not more, important in determining overall quality of life or life satisfaction.^{33–35} It is not clear from this analysis which of these factors might explain the findings, but possible explanations include the expectations, roles and contributions of older people in different societies, how disability and dependency modify societal roles for older people in different cultures, how older people are cared for by both formal and informal health and care systems, the extent of older people's integration into family and social networks and the effect of urbanisation and technology on how older people are able to live and age successfully. Another possible explanation as to why patterns of quality of life differ between countries may be that the construct of quality of life is interpreted differently in different countries or is interpreted differently by men and women between countries.

Strengths and limitations

Our work has several strengths. Our large sample is drawn from eight different countries representing a diversity of culture, geography and economic development. The same questionnaires were applied at all sites, using validated tools, the populations at each site were part of an HDSS, and the selected sample was representative of the surveyed population of older people at each site.

A number of limitations also require discussion. The cross-sectional nature of the data does not allow causal inference to be drawn, and the covariates that we chose to include were based on a priori hypotheses, driven by previous research in other populations. We are not able to tell whether these covariates were causally associated with either future disability or quality of life in this cohort. The number of covariates that we were able to access was limited by the nature of the data present in the INDEPTH WHO-SAGE dataset. Key measures that were missing and would be helpful to include in future analyses include comorbid disease, cardiometabolic risk factors, measures of frailty, more sophisticated measures of social networks, including caregiving by family members and others, and more in-depth analysis of the components of socioeconomic status. Poor mental health is known to be associated with worse quality of life and function, and this is a key issue for future surveys to explore in more depth. Although the surveys that comprised this dataset were broadly representative of the populations sampled, it is likely that those who were most disabled may have been less likely to participate. Similarly, although institutional care is uncommon in the populations sampled, the sampling strategy will have failed to include those in institutional care or hospital, again possibly underestimating levels of disability although the impact of institutionalisation is likely to be small. In addition, data were drawn

from HDSS sites, which study a specific (resource-limited) population within a country in detail and are not necessarily representative of a country population as a whole. The data used in this analysis are now 10 years old, and rapid changes in health and socioeconomic circumstances in the included sites are likely to have affected both disability and quality of life in the last 10 years. Nevertheless, our results are based on the most recent data we could access and act as a baseline with which to compare future measurements of disability and quality of life comparisons between these sites.

Although the use of anchoring vignettes is an attractive concept to allow adjustment for differences in perception of disability between individuals and cultures, the reliability of the information provided by such vignettes has been questioned, as their performance does not necessarily meet stringent thresholds for psychometric performance. Nevertheless, use of such vignettes may still provide useful information on the way that individuals across countries vary in how they order the severity of disability even if their ability to adjust for absolute values of disability scores is limited.²⁵ Even with the use of anchoring vignettes, between-country differences in how the constructs of disability and quality of life are interpreted may explain some of the between-country differences. We were unable to compare the effect of vignette responses across all countries, as vignettes were used in only six of the eight sites. Newer tools for measuring disability (eg, WHODAS 2.0), developed using Item Response Theory,³⁶ may also circumvent some of the variability in interpretation of questions across countries. Large-scale cross-sectional analyses are limited in their ability to explore how the construct of disability is mediated by the interplay of biology and culture, and in-depth, focused qualitative studies are likely to be a more fruitful way to explore these issues further.

CONCLUSIONS

Rapid demographic and socioeconomic transitions are occurring in all of the countries included in this analysis: several countries (eg, Ghana, Bangladesh and Kenya) that were classed as low-income countries at the time of data collection are now classed as LMICs; South Africa has moved from the middle to upper-middle income bracket; and life expectancy is rising rapidly in many countries. A key next step is therefore to obtain and analyse longitudinal data, and planned future waves of INDEPTH WHO-SAGE should hopefully allow collection of these data. Such analyses will be able to test how secular trends are changing the distribution of disability and quality of life between countries and will also be able to map how disability and quality of life change for older individuals over time. Such analyses, together with collection of a broader range of potential explanatory factors, will shed further light on the determinants of disability and quality of life between countries. This in turn will create opportunities to shape interventions and policy to

minimise disability and maximise quality of life for older people as the numbers of older people continue to rise.

Author affiliations

¹MRC/Wits Rural Public Health and Health Transitions Research Unit, School of Public Health, Faculty of Health Sciences, University of the Witwatersrand, Johannesburg, South Africa

²Department of Public Health and Clinical Medicine, Epidemiology and Global Health Unit, Umeå University, Umeå, Sweden

³African Population and Health Research Center, Nairobi, Kenya

⁴Centre for Research on Ageing, University of Southampton, Southampton, UK

⁵OPTENTIA Research Focus, North West University, Vanderbijlpark, South Africa

⁶Department of Health Statistics and Informatics, World Health Organization, Geneva, Switzerland

⁷Institute for Global Health, King's College London, London, UK

⁸Navrongo Health Research Centre, Navrongo, Ghana

⁹Vadu Rural Health Program, KEM Hospital Research Centre, Pune, India

¹⁰INDEPTH Network, Accra, Ghana

¹¹Ifakara Health Institute, Dar es Salaam, Tanzania

¹²Matlab HDSS, Matlab, Bangladesh

¹³Department of Mathematics and Statistics, Njala University, Njala, Sierra Leone

¹⁴School of Public Health, University of the Witwatersrand, Johannesburg, South Africa

¹⁵HDSS Purworejo and Faculty of Medicine, Universitas Gadjah Mada, Yogyakarta, Indonesia

¹⁶Department of Ageing and Health, School of Medicine, University of Dundee, Dundee, UK

Acknowledgements We acknowledge all the researchers involved in developing the INDEPTH WHO-SAGE tool, data collection, collation and analysis and all participants in the INDEPTH WHO-SAGE study at all sites. The foresight and support of the late Richard Suzman, formerly director of Behavioral and Social Science in the National Institute on Aging, NIH, remains invaluable.

Contributors FXG-O, JS and MDW drafted the manuscript. MDW conducted the analyses with contributions from FXGO, JS, SC and SH. All other authors contributed to the original design and data collection in the INDEPTH WHO-SAGE and contributed to critical revision of the manuscript. All authors approved the final draft.

Funding The original fieldwork was supported by the National Institute on Aging through an agency grant to the World Health Organization.

Competing interests None declared.

Ethics approval Ethics committees at each site approved the study, and approval was also obtained from the ethics committee of the WHO in Geneva.

Provenance and peer review Not commissioned; externally peer reviewed.

Data sharing statement The dataset is publicly available at: http://www.tandfonline.com/doi/suppl/10.3402/gha.v3i0.5302/suppl_file/zgha_a_11817729_sm0003.zip, with password obtainable on request from global.health@epiph.umu.se.

Open Access This is an Open Access article distributed in accordance with the terms of the Creative Commons Attribution (CC BY 4.0) license, which permits others to distribute, remix, adapt and build upon this work, for commercial use, provided the original work is properly cited. See: <http://creativecommons.org/licenses/by/4.0/>

© Article author(s) (or their employer(s) unless otherwise stated in the text of the article) 2017. All rights reserved. No commercial use is permitted unless otherwise expressly granted.

REFERENCES

1. GBD 2015 Mortality and Causes of Death Collaborators. Global, regional, and national life expectancy, all-cause mortality, and cause-specific mortality for 249 causes of death, 1980-2015: a systematic analysis for the global burden of disease study 2015. *Lancet* 2016;388:1459-544.
2. Andrews G, Kemp A, Sunderland M, *et al*. Normative data for the 12 item WHO disability assessment schedule 2.0. *PLoS One* 2009;4:e8343.

3. Chatterji S, Byles J, Cutler D, *et al.* Health, functioning, and disability in older adults—present status and future implications. *Lancet* 2015;385:563–75.
4. Van Oyen H, Nusselder W, Jagger C, *et al.* Gender differences in healthy life years within the EU: an exploration of the “health-survival” paradox. *Int J Public Health* 2013;58:143–55.
5. Roberts H, Khee TS, Philip I. Setting priorities for measures of performance for geriatric medical services. *Age Ageing* 1994;23:154–7.
6. Hirve S, Juvekar S, Sambhudas S, *et al.* Does self-rated health predict death in adults aged 50 years and above in India? Evidence from a rural population under health and demographic surveillance. *Int J Epidemiol* 2012;41:1719–27.
7. Gómez-Olivé FX, Thorogood M, Bocquier P, *et al.* Social conditions and disability related to the mortality of older people in rural South Africa. *Int J Epidemiol* 2014;43:1531–41.
8. Wouterse B, Huisman M, Meijboom BR, *et al.* The effect of trends in health and longevity on health services use by older adults. *BMC Health Serv Res* 2015;15:574.
9. World Health Organisation. Global strategy and action plan on ageing and health. 2016 <http://www.who.int/ageing/global-strategy/en/> (accessed 2 Aug 2017).
10. Xavier Gómez-Olivé F, Thorogood M, Clark BD, *et al.* Assessing health and well-being among older people in rural South Africa. *Glob Health Action* 2010;3(Suppl 2):23–35.
11. Mwanyangala MA, Mayombana C, Urassa H, *et al.* Health status and quality of life among older adults in rural Tanzania. *Glob Health Action* 2010;3(Suppl 2):36–44.
12. Kyobutungi C, Egondi T, Ezeh A. The health and well-being of older people in Nairobi’s slums. *Glob Health Action* 2010;3(Suppl 2):45–53.
13. Debpuur C, Welaga P, Wak G, *et al.* Self-reported health and functional limitations among older people in the Kassena-Nankana District, Ghana. *Glob Health Action* 2010;3(Suppl 2):54–63.
14. Van Minh H, Byass P, Chuc NT, *et al.* Patterns of health status and quality of life among older people in rural Viet Nam. *Glob Health Action* 2010;3(Suppl 2):64–9.
15. Razzaque A, Nahar L, Akter Khanam M, *et al.* Socio-demographic differentials of adult health indicators in Matlab, Bangladesh: self-rated health, health state, quality of life and disability level. *Glob Health Action* 2010;3(Suppl 2):70–7.
16. Ng N, Hakimi M, Byass P, *et al.* Health and quality of life among older rural people in Purworejo District, Indonesia. *Glob Health Action* 2010;3:2125–87.
17. Hirve S, Juvekar S, Lele P, *et al.* Social gradients in self-reported health and well-being among adults aged 50 and over in Pune District, India. *Glob Health Action* 2010;3:2128–95.
18. Santosa A, Schröders J, Vaezghasemi M, *et al.* Inequality in disability-free life expectancies among older men and women in six countries with developing economies. *J Epidemiol Community Health* 2016;70:855–61.
19. Kowal P, Kahn K, Ng N, *et al.* Ageing and adult health status in eight lower-income countries: the INDEPTH WHO-SAGE collaboration. *Glob Health Action* 2010;3(Suppl 2):11–22.
20. Ng N, Kowal P, Kahn K, *et al.* Health inequalities among older men and women in Africa and Asia: evidence from eight Health and Demographic Surveillance System sites in the INDEPTH WHO-SAGE Study. *Glob Health Action* 2010;3:5420–107.
21. Garin O, Ayuso-Mateos JL, Almansa J, *et al.* Validation of the “World Health Organization Disability Assessment Schedule, WHODAS-2” in patients with chronic diseases. *Health Qual Life Outcomes* 2010;8:51.
22. Schmidt S, Mühlhan H, Power M. The EUROHIS-QOL 8-item index: psychometric results of a cross-cultural field study. *Eur J Public Health* 2006;16:420–8.
23. The WHOQoL group. Development of the world health organization WHOQOL-BREF quality of life assessment. *Psychol Med* 1998;28:551–8.
24. da Rocha NS, Power MJ, Bushnell DM, *et al.* The EUROHIS-QOL 8-item index: comparative psychometric properties to its parent WHOQOL-BREF. *Value Health* 2012;15:449–57.
25. Hirve S, Gómez-Olivé X, Oti S, *et al.* Use of anchoring vignettes to evaluate health reporting behavior amongst adults aged 50 years and above in Africa and Asia - testing assumptions. *Glob Health Action* 2013;6:21064.
26. World Bank Data Bank. Explore create share: development data. 2017 <http://databank.worldbank.org/data/home.aspx>.
27. Langer A, Meleis A, Knaul FM, *et al.* Women and Health: the key for sustainable development. *Lancet* 2015;386:1165–210.
28. World Health Organisation. Global health observatory data repository. <http://apps.who.int/gho/data/node.main.688> (accessed 17 Apr 2017).
29. Hosseinpoor AR, Williams JS, Jann B, *et al.* Social determinants of sex differences in disability among older adults: a multi-country decomposition analysis using the world health survey. *Int J Equity Health* 2012;11:52.
30. Smith MP, Olatunde O, White C. Disability-free life expectancy: comparison of sources and small area estimates in England, 2006–08. *Health Stat Q* 2011;50:40–78.
31. Dodds RM, Syddall HE, Cooper R, *et al.* Global variation in grip strength: a systematic review and meta-analysis of normative data. *Age Ageing* 2016;45:209–16.
32. Hubbard RE, Rockwood K. Frailty in older women. *Maturitas* 2011;69:203–7.
33. Raggi A, Corso B, Minicuci N, *et al.* Determinants of quality of life in ageing populations: results from a cross-sectional study in Finland, Poland and Spain. *PLoS One* 2016;11:e0159293.
34. Conde-Sala JL, Portellano-Ortiz C, Calvo-Perxas L, *et al.* Quality of life in people aged 65+ in Europe: associated factors and models of social welfare-analysis of data from the SHARE project (Wave 5). *Qual Life Res* 2017;26:1059–70.
35. Lamu AN, Olsen JA. The relative importance of health, income and social relations for subjective well-being: an integrative analysis. *Soc Sci Med* 2016;152:176–85.
36. Reeve BB, Hays RD, Chang C-H, *et al.* Applying item response theory to enhance health outcomes assessment. *Quality of Life Research* 2007;16:1–3.



Variations in disability and quality of life with age and sex between eight lower income and middle-income countries: data from the INDEPTH WHO-SAGE collaboration

Francesc Xavier Gomez-Olive, Julia Schröders, Isabella Aboderin, Peter Byass, Somnath Chatterji, Justine I Davies, Cornelius Debuur, Siddhivinayak Hirve, Abraham Hodgson, Sanjay Juvekar, Kathleen Kahn, Paul Kowal, Rose Nathan, Nawi Ng, Abdur Razzaque, Osman Sankoh, Peter K Streatfield, Stephen M Tollman, Siswanto A Wilopo and Miles D Witham

BMJ Glob Health 2017 2:
doi: [10.1136/bmjgh-2017-000508](https://doi.org/10.1136/bmjgh-2017-000508)

Updated information and services can be found at:
<http://gh.bmj.com/content/2/4/e000508>

These include:

References

This article cites 33 articles, 1 of which you can access for free at:
<http://gh.bmj.com/content/2/4/e000508#ref-list-1>

Open Access

This is an Open Access article distributed in accordance with the terms of the Creative Commons Attribution (CC BY 4.0) license, which permits others to distribute, remix, adapt and build upon this work, for commercial use, provided the original work is properly cited. See:
<http://creativecommons.org/licenses/by/4.0/>

Email alerting service

Receive free email alerts when new articles cite this article. Sign up in the box at the top right corner of the online article.

Topic Collections

Articles on similar topics can be found in the following collections

[Epidemiology](#) (12)
[Open access](#) (508)

Notes

To request permissions go to:
<http://group.bmj.com/group/rights-licensing/permissions>

To order reprints go to:
<http://journals.bmj.com/cgi/reprintform>

To subscribe to BMJ go to:
<http://group.bmj.com/subscribe/>