



Haffner-Staton, Ephraim and La Rocca, Antonino and Fay, Mike W. (2017) Progress towards a methodology for high throughput 3D reconstruction of soot nanoparticles via electron tomography. *Journal of Microscopy* . ISSN 1365-2818 (In Press)

Access from the University of Nottingham repository:

<http://eprints.nottingham.ac.uk/49051/1/paper%203D%20Tem%20Ephraim-%20Nino.pdf>

Copyright and reuse:

The Nottingham ePrints service makes this work by researchers of the University of Nottingham available open access under the following conditions.

This article is made available under the University of Nottingham End User licence and may be reused according to the conditions of the licence. For more details see:
http://eprints.nottingham.ac.uk/end_user_agreement.pdf

A note on versions:

The version presented here may differ from the published version or from the version of record. If you wish to cite this item you are advised to consult the publisher's version. Please see the repository url above for details on accessing the published version and note that access may require a subscription.

For more information, please contact eprints@nottingham.ac.uk



Progress towards a methodology for high throughput 3D reconstruction of soot nanoparticles via electron tomography

Journal:	<i>Journal of Microscopy</i>
Manuscript ID	JMI-2017-0212
Wiley - Manuscript type:	Original Article
Date Submitted by the Author:	24-Oct-2017
Complete List of Authors:	Haffner-Staton, Ephraim; The University of Nottingham, Department of Mechanical Materials and Manufacturing Engineering La Rocca, Antonino; The University of Nottingham, Department of Mechanical Materials and Manufacturing Engineering Fay, Michael; University of Nottingham, The Nottingham Nanotechnology and Nanoscience Centre
Keywords:	Soot characterisation, 3D-TEM, Electron tomography, 2D-TEM, Fractal dimension

Progress towards a methodology for high throughput 3D reconstruction of soot nanoparticles via electron tomography

E. Haffner-Staton¹, A La Rocca^{1*}, M Fay^{1,2}

¹Department of Mechanical Materials and Manufacturing Engineering, The University of Nottingham, University Park, Nottingham, NG7 2RD, United Kingdom

²Nanoscale and Microscale Research Centre, The University of Nottingham, University Park, Nottingham, NG7 2RD, United Kingdom

*Corresponding author: Dr Antonino La Rocca e-mail: antonino.larocca@nottingham.ac.uk, Engine Research Group, Department of Mechanical, Materials and Manufacturing Engineering University Park The University of Nottingham NG7 2RD Tel: +44 (0)1159513815

Abstract (120 words)

The aim of this work is to make progress towards the development of 3D reconstruction as a legitimate alternative to traditional 2D characterisation of soot. Time constraints are the greatest opposition to its implementation, as currently reconstruction of a single soot particle takes around 5-6 hours to complete. As such, the accuracy and detail gains are currently insufficient to challenge 2D characterisation of a representative sample (*e.g.* 200 particles). This work is a consideration of the optimisation of the steps included within the computational reconstruction and manual segmentation of soot particles. Our optimal process reduced the time required by over 70% in comparison to a typical procedure, whilst producing models with no appreciable decrease in quality.

Key words: Soot characterisation, 2D-TEM, fractal dimension, Electron tomography, 3D-TEM

Introduction

3D electron tomography is a well-established technique for the analysis of complex nanoscale 3D structures. However, much of the optimisation to date has concentrated on analysis of materials where one structure is fully characteristic of the whole, and of materials with discrete grey scales in TEM images. Neither of these conditions apply to the analysis of soot. The complex and varying 3D nature of soot particles produced in combustion makes 3D analysis both highly desirable, and excessively time consuming with a currently typical tomographic procedure, due to the need to analyse multiple structures to obtain an accurate understanding of the sample.

The production of soot is an undesirable yet unavoidable consequence of burning hydrocarbon fuel in internal combustion (IC) engines. The carbonaceous nanoparticles produced can have a profoundly complex and damaging effect on the environments into which they are released, and as such the amount produced by IC engines is limited by European regulation. The complex fractal-like morphology of soot nanoparticles plays an important role in determining their exact behaviour, and thus the myriad problems that they cause. This includes their effect on human health when inhaled (Broday and Rosenzweig 2011), contribution to the greenhouse effect via absorption of visible light (Khalizov, Xue et al. 2009), degradation of marine habitats (Mari, Lefevre et al. 2014), and damage to the lubricating properties of engine oil formulations (Green and Lewis 2007). Morphological characterisation is an important initial step in developing intelligent strategies to combat the problems caused by soot emissions. The aim of the work reported here has been to make progress towards the development of an optimised methodology for the high through-put morphology characterisation of soot nanoparticles in 3D using electron tomography. It is the belief of the authors that the use of 3D characterisation has the potential to offer significant advantages compared to the current state of the art (2D TEM), and if

developed appropriately could prove a very beneficial tool for researchers in all areas related to the study of soot and similar nanoparticles.

Soot is produced by IC engines when incomplete combustion takes place in the cylinders. Such conditions arise during routine operation due to the presence of fuel rich zones (La Rocca, Bonatesta et al. 2015). These areas of non-stoichiometric air-fuel mixtures form for a variety of reasons, including insufficient fuel vaporization due to low engine temperature, limited fuel-air mixing prior to injection, and the presence of fuel films on the cylinder walls and piston due to the injection strategies (La Rocca, Bonatesta et al. 2015). Additionally, soot can form from the direct pyrolysis of liquid fuel droplets due to the extreme temperatures (Heywood 1988). Diesel engines, and modern direct injection gasoline (GDI) engines are particularly prone to soot formation due to limited fuel-air mixing prior to injection, though overall engine efficiency and emissions are improved compared to conventional gasoline engines (Mathis, Mohr et al. 2005, Bonatesta, Chiappetta et al. 2014). Use of exhaust gas recirculation (EGR) systems has been observed to increase the production of nucleation mode particles in the 10-25nm range (Zhao, Yu et al. 2013).

From a chemical mechanism perspective, the most important initial precursor to soot formation is generally considered to be acetylene (Richter and Howard 2000). This, and other small unsaturated species form early during combustion, and undergo a series of radical and polymerisation reactions to form small aromatic species, such as benzene and naphthalene. These molecules continue to grow in size via further similar reactions with smaller molecules and with one another. The larger polycyclic aromatic hydrocarbons (PAHs) of around 1000u (unified atomic mass units) that eventually form are the direct precursors to the first soot nuclei that leave the vapour phase. Physical collision of these 1nm spherical structures, concurrent with continued surface growth reactions with smaller species in the gas phase, produces the characteristic soot primary particles (Richter and Howard 2000). These larger spherical structures have diameter typically around 10-50nm (La Rocca, Di Liberto et al. 2013), and are the structural sub-unit of the distinctive fractal-like soot particles. Carbonization occurs due to the high temperature conditions during formation, with the result being that soot particles are almost entirely carbon in their elemental constitution (Richter and Howard 2000). Oxidation of soot and its precursors occurs throughout all stages of soot formation due to the presence of oxygen in the high temperature environment of the combustion chamber, acting to reduce the concentration and size of any soot structures formed (Richter and Howard 2000). The balance of these processes, and thus the amount of soot formed, depends on the particular operating conditions of the engine.

Soot particles, often referred to as agglomerates or aggregates, have a complex, branched morphology resulting from the random collisions of primary particles. The size of these structures typically ranges from 50-500nm, though this is strongly dependent on the formation conditions (Clague, Donnet et al. 1999, Virtanen, Ristimäki et al. 2004, Lapuerta, Martos et al. 2007, La Rocca, Di Liberto et al. 2013). The term 'mass fractal' is often used to describe soot agglomerates (Rogak and Flagan 1992, Koylu, Faeth et al. 1995, Neer and Koylu 2006), due to their resemblance to self-similar fractal patterns, though self-similarity in soot is often only true over very limited distances. The internal structures of the primary particles has been investigated, and typically consists of an inner core and outer shell arrangement (Ishiguro, Takatori et al. 1997). The inner core will contain several small, spherical or 'fulleroid' carbonaceous structures surrounded by short, distorted layers of graphite-like carbon. The outer shell consists of an onion-skin like arrangement of short sections of graphite-like carbon, typically 2-5 carbon layers thick, and ~3nm wide (Omidvarborna, Kumar et al. 2015). In a small number of publications, additional amorphous carbon structures have been observed in samples of GDI soot-in-oil (Uy, Ford et al. 2014, La Rocca, Bonatesta et al. 2015).

The major fraction of the soot produced is emitted from the engine with the exhaust gases, contributing to a number of major problems in the environment. The negative effects of soot inhalation on human health have been widely investigated, and it has been observed that the surface area of the nanoparticles

is linked to their toxicity (Oberdörster, Celein et al. 1995). In the stratosphere, soot nanoparticles are involved in complex interactions with radiation (Yon, Lemaire et al. 2011), particularly visible wavelengths, resulting in a net positive contribution to the greenhouse effect (Khalizov, Xue et al. 2009). Again it is seen that the fractal morphology, as measured via the fractal dimension, plays a role in determining the refractive properties of soot in these environments, and similarly can be used to understand the Brownian coagulation of soot in atmospheric models (Kajino and Kondo 2011). A further example of the effects of soot is in its concentration in surface waters (Mari, Lefevre et al. 2014), where the surface area of soot particles act as active sites for adsorption of waterborne biological species, altering the microbial balance.

A small percentage of the soot produced in the cylinders becomes entrained within the engine lubricant oil, either via blow-by gases passing the piston rings (Green and Lewis 2008), or via a thermophoretic mechanism into the oil film on the cylinder walls (Kittelson, Ambs et al. 1990, Suhre and Foster 1992). The soot-oil relationship is extremely complex, and as such reports in the literature on the effect of soot on lubricant oil viscosity, friction and on engine wear at times appear contradictory (Heywood 1988, Chinas-Castillo and Spikes 2004, Green, Lewis et al. 2006, Green and Lewis 2007, Antusch, Dienwiebel et al. 2010, Hu, Hu et al. 2013, Salehi, Khaemba et al. 2016). The particular changes that take place depends not only on the concentration of soot, but also on its morphology (Chinas-Castillo and Spikes 2004, Antusch, Dienwiebel et al. 2010). It is known, for example, that the surface area of soot nanoparticles correlates directly with increases in oil viscosity (Green and Lewis 2007). Additionally, the oil formulation (Hu, Hu et al. 2013), contact type and lubrication regime (Green and Lewis 2007, Salehi, Khaemba et al. 2016) will all play a role in the changes observed. Depending on these variables, soot has been observed to both increase and decrease friction & oil viscosity (Hu, Hu et al. 2013, Salehi, Khaemba et al. 2016), and rates of wear within engines (Salehi, Khaemba et al. 2016).

It is clear from these examples that in order to efficiently and competently deal with the numerous problems that automotive soot causes, a thorough understanding of its morphology is needed. This will, in turn, permit a deeper understanding of the behaviour of soot and, through correlating properties to observations with modelling studies, enable effective design of solutions. As such, the characterisation of soot is an area of great interest for researchers from various disciplines and many methods have been employed to these ends.

Characterisation of soot morphology can be achieved using a number of techniques, of various levels of quality, reliability, and experimental difficulty. Techniques such as nanoparticle tracking analysis (La Rocca, Di Liberto et al. 2014, La Rocca, Di Liberto et al. 2014), and dynamic light scattering (Liu, Nemoto et al. 2003, Asango, La Rocca et al. 2014) (NTA and DLS respectively) track the Brownian motion of particles in suspension as a means calculate the number concentration and size distribution of particles. Although these techniques can measure many thousands of particles within minutes, they only provide information on the diameter of the hydrodynamic volume a particle occupies. In comparison to the known fractal structures of soot particles this information is clearly very limited, and often more detailed methods of characterisation are preferred.

Perhaps the most common method used for the detailed characterisation of soot nanoparticles is transmission electron microscopy (TEM) (Clague, Donnet et al. 1999, Su, Jentoft et al. 2004, Devlin, Passut et al. 2008, Lapuerta, Ballesteros et al. 2009, La Rocca, Di Liberto et al. 2013, La Rocca, Bonatesta et al. 2015, La Rocca, Campbell et al. 2016). From these images a variety of parameters may be measured (volume, surface area, radius of gyration, fractal dimension, skeletal length etc.). However, this currently requires the manual measurement of several hundred particles, significantly increasing the time involved compared with the previous methods. Although the morphological detail is greatly increased compared with simple hydrodynamic diameter size distributions, it is still limited in this regard as they are based upon the measurements of 2-dimensional images. As such, various

assumptions, approximations, and empirical correction factors must be applied in order to infer the value of 3D morphological properties. For example, the number of primary particles that constitute an agglomerate is often calculated from the 2D area of a particle in TEM images, first by assuming all primary particles are perfectly spherical and of a constant diameter, and then by using semi-empirical correction factors to account for the overlap of primary particles (Neer and Koylu 2006). In some cases, agglomerate volume is then inferred simply by multiplying the number of primary particles by the volume of the assumed spherical primary particle, ignoring the overlap of the primary particles (Koylu, McEnally et al. 1997). In particular, empirical correction factors may be problematic when applied to a situation that does not resemble the experimental conditions under which they were deduced. In some instances, properties that can be measured from the 2D projection of the particle, such as radius of gyration and fractal dimension, may simply be assumed to represent the 3D values (Gwaze, Schmid et al. 2006, Lapuerta, Ballesteros et al. 2006, Sachdeva and Attri 2008, Schenk, Lieb et al. 2015). In such cases the accuracy of this assumption depends on how well the TEM images portray the 3D nature of the particle, i.e. are more accurate if the particles are not particularly large perpendicular to the TEM grid. The effect of these assumptions and approximations is to add an unknown level of uncertainty to morphological properties measured via 2D means, which may limit our ability to understand how soot morphology impacts its effect on lubricant oil properties.

Emphasis for 3D characterisation

A small number of researchers (Medalia 1970, Adachi, Chung et al. 2007), including the authors (La Rocca, Campbell et al. 2016), have expressed concern over the validity of 3D properties inferred from just a single projection, though in the vast majority of publications this is ignored. The notion is that it can be considered incorrect to only use values measured from a single 2D projection of a particle, given that all possible 2D projections are equally valid representations of the 3D structure, and all involve the same lack of depth perception. The apparent morphology of a particle in a projection can change considerably if the angle of projection is altered, and as such the value of any measured morphological properties would also change considerably. Previous work by the authors observed that commonly measured morphological properties could vary by up to 60% for the same particle when projection angles over a $\pm 60^\circ$ range were considered (La Rocca, Campbell et al. 2016). Work by Adachi also found that 2D-derived properties are highly sensitive to the angle of projection, with similar levels of variability (Adachi, Chung et al. 2007).

If every soot particle in a sample showed a similar level of variability with the angle of projection, and the contribution of all possible projections is considered (i.e. all projection are equally valid), a large uncertainty becomes associated with traditional single projection characterisations. As such, many more particles than the usual ~ 200 must be considered for the calculation of statistically valid means, greatly increasing the time taken for 2D characterisation of samples.

Additionally, previous works (including that of the authors) have considered the discrepancy between 2D- and 3D-derived morphological parameters via 3D models of simulated (Rogak and Flagan 1992, Martos, Lapuerta et al. 2017), and real soot agglomerates (van Poppel, Friedrich et al. 2005, Orhan, Haffner-Staton et al. 2016). Van Poppel observed that values of surface area and volume from 2D methods were up to 16 and 125 times larger (respectively) than the real 3D-derived values (van Poppel, Friedrich et al. 2005). Rogak's study of simulated agglomerates observed that fractal dimension was generally underestimated by 10-20% when using 2D methods (Rogak and Flagan 1992). Our own study found agreement with Rogak's work, and additionally that volume could be underestimated by up to 40% via 2D methods (Orhan, Haffner-Staton et al. 2016). Recently, Martos' study of a large number of simulated agglomerates found that 2D-derived radius of gyration underestimated the true values by over 45%, leading to a corresponding overestimation of fractal dimension (Martos, Lapuerta et al. 2017). Whether 2D methods over- or under-estimate the real values of morphological parameters depends on the exact methods that were used to derive the values from the 2D-projections.

It is with this concern over the accuracy of 2D-based measurements, and with the underlying belief that improved characterisation leads to improved knowledge of the soot-oil relationship, and in-turn to improved lubricant design, that the authors have turned to 3D characterisation as a potential characterisation method. In a situation where it is possible to produce highly accurate 3D volume reconstructions of individual particles, any properties measured from these would be of the greatest detail possible and would greatly reduce or even eliminate the need for unrealistic assumptions and correction factors. Additionally, the issue of multiple valid projections of the same particle is not present, and fewer particles need to be considered for the calculation of accurate and valid mean values.

Whilst a handful of publications have proved that soot characterisation through 3D volume reconstruction is possible (van Poppel, Friedrich et al. 2005, Adachi, Chung et al. 2007, La Rocca, Campbell et al. 2016), there remain a major challenge to be overcome before the technique becomes a viable alternative to 2D-TEM, as the time required to produce the models is currently far too long for a statistically significant number of particles to be characterised.

The individual steps required to produce 3D volume reconstructions via electron tomography are discussed below in the context of soot-specific issues.

Acquisition

As for traditional 2D characterisation, TEM images of soot agglomerates must be acquired for 3D characterisation, so soot samples of interest must be prepared for electron microscopy. Due to the low contrast nature of carbon under the TEM beam soot must be deposited onto support films with as low contrast as possible, such as graphene oxide. Soot-in-oil samples must be subjected to a cleaning process to remove the oil residue, as it is a severe contaminant under the electron beam (Shuff and Clarke 1991). This process includes dilution in heptane, followed by washing with diethyl ether and is described in greater detail in (La Rocca, Di Liberto et al. 2013). Gold nanoparticle fiducial markers must then be added to the grid to facilitate high quality alignment of images (see next section for further details).

The tomographic reconstruction process is based upon Fourier Slice Theory, which states that the 3D volume of an object can be recreated from the complete set of its 2D projections (Frank 2008). The use of the term 'projections' is an important nuance, and refers to the fact that contrast in TEM images used for tomography should be monotonically varying functions of the mass (i.e. mass-thickness contrast is dominant in forming the images, as opposed to diffraction contrast etc.) (Midgley and Weyland 2003, Hawkes 2007). This is known as the 'projection requirement', and for soot particles, conventional TEM images adequately fulfil this requirement.

A series of projections is produced by capturing multiple images of a soot particle as the TEM grid is tilted at a series of angles, most commonly in 1-2° increments. In theory the more complete the set of images the more accurate the reconstructed volume, though limitations of the TEM machinery mean that in most cases it is limited to a maximum tilt range of $\pm 60-70^\circ$.

Particles situated close to the edges of the grid can become obscured by the copper mesh at higher angles of tilt, and it may become impossible to collect a tilt series over a sufficient range. So while for 2D TEM characterisation particles needed only to be clearly visible, for 3D reconstruction we have additional restrictions on the location of particles, potentially reducing the number of suitable particles significantly. Also, if particles are present in too high concentrations they can obscure one another, and not allow for the reconstruction of individual particles. The transparency of soot nanoparticles under the electron beam means that it is often hard to tell whether overlapping agglomerates are indeed individuals, or part of a single larger structure.

Once suitable particles have been found, the tilt series of images can be collected. Tilt series can contain as many as 100-200 images, and take up to an hour to complete. The large number of images required

exposes the soot samples to high beam dosage, which can be problematic for soot-in-oil samples. Residual oil can cause severe contamination of the image, obscuring regions of interest (La Rocca, Bonatesta et al. 2015), meaning quality tomographic reconstruction is no longer possible.

Alignment

Prior to the reconstruction process the images in the tilt series must be aligned to a common coordinate system, else the tomogram produced will be of poor quality. Although the software used to capture the tilt series in this work (SerialEM (Kremer, Mastronarde et al. 1996)) performs an alignment during acquisition, mechanical limitations of the machinery means the tilt is not perfectly smooth. In studies of high contrast species, such as metal nanoparticles, markerless alignments based on simple cross correlation between adjacent images may be sufficient, but the low contrast of soot species means it is unsuitable for this work (Fernandez 2012). Hence, we have used high contrast gold particles to improve both the automated acquisition alignment, and the alignment by reconstruction software (IMOD eTomo in this work). In the experience of the authors, fiducial marker alignment in eTomo is neither particularly difficult nor time consuming, and primarily automated. The main drawback associated with fiducial marker alignment is additional experimental step that is required in preparing the grids. Not only must an appropriate concentration of soot particles be added, but fiducial markers must also be added in neither too great, nor too small a concentration.

Reconstruction

Once a suitably aligned tilt series has been created, the reconstruction can then be performed. There are a number of algorithms that can be employed to produce the tomograms, using several software packages.

The algorithms range from computationally cheap and, in theory, less accurate, to more sophisticated and time consuming iterative methods. Weighted back-projection (WBP) is one of the simplest and most widely used algorithms, and depending on the software, hardware, and number of pixels in the tilt series images, can complete in under a minute (Orhan, Haffner-Staton et al. 2016). The simultaneous iterative reconstruction technique (SIRT) is another widely used method that involves some degree of back-projection, and depending on the number of iterations can take several hours to complete (Fernandez 2013). Newer methods solve the reconstruction iteratively via an algebraic method and can produce high quality tomograms from relatively few images, though require prior knowledge of grey levels in the specimen (Batenburg, Bals et al. 2009, Batenburg and Sijbers 2011), and thus are unsuitable for the study of soot. IMOD with eTomo (Kremer, Mastronarde et al. 1996), TomoJ (Messaoudil, Boudier et al. 2007), and Tomo3D (Agulleiro and Fernandez 2011) are examples of commonly used and freely available reconstruction software.

An appraisal of the available reconstruction techniques must be performed in order to discover the optimal method. For viability in comparison to 2D-characterisation, the time required for reconstruction is the greatest concern. For example, if reconstruction of a single particle took 1 working day, characterisation of an entire sample via a statistically relevant number of individuals (100-200 particles) would take around an entire year to complete, which regardless of any improvements to accuracy is simply too long. Additionally, we must ensure that measures taken to improve speed at this stage do not come at the cost of reducing the quality of the reconstructions to the point that they no longer offer greater morphological information than the current 2D methods.

Segmentation

Due to the low contrast of soot in TEM images, there is subsequently low contrast in the tomogram between soot particle and background support film. Additionally, reconstruction artefacts lead to varying grey levels within areas of particle matter, increasing the difficulty of the process. Since no

generally applicable computational method for segmentation has yet come to the fore, manual segmentation is still amongst the most widely used methods (Fernandez 2012).

Depending on the size of the particle and the resolution in the TEM images, the tomogram can easily be several hundred slices thick. Manual segmentation of this many images can be extremely time consuming, and is probably the most time intensive step in the entire 3D-characterisation process. Segmentation also uniquely defines the particle model that is produced and characterised, and so defines the values of the parameters measured. Accuracy in manual segmentation is clearly of great importance, yet the more accurately the tomogram is segmented, the more time is required.

There are two obvious ways in which the time taken for segmentation could be reduced. The first is to develop a protocol for the post-processing of tomogram slices so that automated segmentation is possible. Difficulties envisioned with this approach relate to the strong variability in the quality, contrast, degree of artefacts etc. of the tomograms, which depend upon the specimen under study, imaging conditions, reconstruction algorithms used etc. It may not be possible to develop a methodology robust enough to be generally applicable, and may result instead in a method that requires time for the tuning of post-processing parameters comparable to that needed for manual segmentation. A second method would be to develop the use of interpolation in manual segmentation, *i.e.* to manually segment every n^{th} slice, and interpolate the results in between. This could dramatically reduce the time required for segmentation, whilst retaining the benefits of manual segmentation (applicable to all types of tomogram, low tech etc.). This method is clearly less desirable than a high quality automated process, though represents a more achievable goal in the short term.

Elongation Correction & Validation

Although tomographic reconstruction from TEM images can be performed, in practice it is rarely possible to produce the ‘full set’ of projections that is described in Fourier Transform theory. Mechanical limitations mean that a $\pm 70^\circ$ tilt range is often the most that can be achieved, resulting in a ‘missing wedge’ of information (Midgley and Weyland 2003). This causes an elongation of the reconstructed volume in the direction of the missing information (*i.e.* the z -direction, perpendicular to the TEM grid), and blurs the tomogram with so-called fanning effects. Consequently, even if segmentation perfectly isolates all particle matter within the tomogram the resultant particle model will still be erroneous because of the elongation, which will affect measured parameters such as volume and surface area. As the purpose for the development of a 3D-TEM methodology for soot is to improve the quality of morphology characterisation, it is clearly of great importance that the extent of elongation be quantified, and a strategy be developed to ensure 3D-TEM actually does offer significant improvements compared to the current state of the art.

In 1980, Radermacher proposed a series of equations to evaluate elongation in tomographic reconstruction as a function of the maximum tilt angle, resulting in the following relation (Radermacher and Hoppe 1980):

$$e_{xz} = \sqrt{\frac{\alpha + \sin(\alpha)\cos(\alpha)}{\alpha - \sin(\alpha)\cos(\alpha)}}$$

For a maximum tilt range of $\pm 60^\circ$, this results in a supposed elongation factor (e_{xz}) of 1.55 in the z -direction. Alternatively, the elongation can be determined by the reconstruction of objects of known dimensions. As for real soot agglomerates these are not known exactly, correction must be carried out using alternate structures whose morphology is well defined. The same reconstruction and segmentation procedures must be applied, and the resultant reconstructed models can be compared to the original. On occasion, researchers have attempted this using the gold nanoparticles added as fiducial markers (Mezerji, Van den Broek et al. 2011). These particles are spherical and can be acquired with well-defined diameters as small as 5nm. However, they are far removed from resembling real soot

agglomerate morphology. In addition they are opaque to the electron beam, meaning that the projection requirement for tomographic reconstruction is not fulfilled in bright field (BF) TEM, meaning HAADF-STEM must be used (see (Frank 2008) for further details on the projection requirement). In the BF-TEM tomography, gold nanoparticles are particularly prone to blurring and fanning effects, and at typical resolutions constitute only a small number of pixels (10-20). As such, elongation calculated via these structures are particularly prone to error in their analysis.

Because of such issues with real structures of known dimensions, researchers in the field of electron tomography have analysed reconstruction elongation and artefacts via the use of simulated data sets (Friedrich, Guo et al. 2011, Ali, Landsberg et al. 2012). The example most closely related to our own area of research is Okyay's study of SEM tomography of soot (Okyay, Heripre et al. 2016), which aimed to quantify the effects of missing wedge elongation via reconstruction of a sphere model measuring the equivalent of 100nm in diameter. Values of volume and surface area from the reconstructed sphere were compared to values from the original model, showing deviations of 0.6% in volume and 7% in surface area. The size of this structure is clearly more representative of real soot agglomerates than the gold nanoparticles, and the computational nature of the model means the appearance of the 2D projections can easily be tuned to match the contrast and noise in real images (Friedrich, Guo et al. 2011, Ali, Landsberg et al. 2012). However, it is known that distortions in tomography are dependent upon the objects shape and size (Frank 2008), and so for a truly representative and accurate calculation of the elongation, the calibration species should ideally mimic the defining fractal morphology of soot aggregates as well.

Towards these ends, we have devised a method for the creation of simple, soot-like 3D models and their TEM-style tilt series in order to assess the extent of elongation to be expected in the tomographic reconstruction of soot nanoparticles. The elongation factor is calculated for multiple 3D models, and a full 'original vs reconstructed' morphology assessment is carried out for a select few. This investigation allows us an idea of the scale of the error we can expect during real soot reconstruction, and in future the ability to design a scheme for the correction of elongation and blurring effects.

Experimental setup and sample preparation

Three model systems of soot were used in this work: flame-generated soot, and diesel and gasoline engine soot extracted from oil in the sump. All soot samples were deposited onto 300 mesh Graphene Oxide TEM support films obtained from EM Resolutions. Flame-generated (FG) soot was deposited directly onto the TEM grid. As mentioned, soot samples from engine oil need to undergo a cleaning procedure prior to deposition on the grid. Oil samples were diluted in heptane at a ratio of 1:60, then deposited onto the grid before further washing with diethyl ether. Further details of this procedure can be found in previous publications (La Rocca, Di Liberto et al. 2013, Orhan, Haffner-Staton et al. 2016). Colloidal gold nanoparticles in aqueous suspension were deposited onto the grid to aid alignment of images. Gold nanoparticles were obtained from Generon, and are spherical with 10nm diameter. Soot characterisation was carried out at the Nottingham Nanoscale and Microscale Research Centre using a JEOL 2100F TEM equipped with a Gatan Orius CCD camera, operating at 200 kV.

Reconstructions were performed using IMOD with eTomo (Kremer, Mastronarde et al. 1996), on a Lenovo PC with a 3.50 GHz Intel Xeon E5-1620v3 processor (8 CPUs) and 32 GB RAM, using a 64-bit version of Windows 7. The two single-axis reconstructions were performed on the same tilt series, which contained an image every 1° over a ±60° tilt range (121 images total). Measurement of morphological parameters was carried out as follows: Volume and surface area were determined using the BoneJ plugin for ImageJ (Doube, Klosowski et al. 2010), radius of gyration was determined using a self-produced ImageJ macro, and fractal dimension using the Box-count algorithm for MATLAB (Moisy 2008).

Simulated data

Synthetic soot-like 3D models were created using a self-produced macro for ImageJ. Variable numbers of primary particle-style spheres were randomly generated to interconnect and produce structures similar to fractal-like soot agglomerates. The number of primary particles varied between 10 & 60, as this is most similar to soot-in-oil particles that are our primary research interest. ImageJ was also used to create the tilt series of 2D-projections, and to alter the contrast and add noise such that the projections appear similar to soot in real TEM images.

Results & Discussion

1. Reconstruction algorithm

This section of the paper details the investigation into the optimal reconstruction algorithm to use to facilitate high throughput 3D characterisation of soot nanoparticles.

In order to assess the optimal technique, two reconstruction algorithms were used to produce 3D models of the same FG soot particle (fig-1). The time required for the computational reconstruction step, and the values measured during the morphological characterisation for each method were compared to assess speed and quality. The algorithms employed in this study were single-axis WBP (WBP) and single-axis SIRT (with 50 iterations) algorithms. The WBP reconstruction is essentially the lowest quality/cheapest method that may be used, and is expected to be quicker than the iterative SIRT method but produce an inferior tomogram. The tilt series consisted of 121 individual 16-bit images, 1000 x 668 pixels in size.

Figure-1: TEM projections of flame-generated soot particle captured at -30° , 0° , and $+30^\circ$ tilt angles. Scale bar equal to 100 nm

The weighted back-projection algorithm was much quicker than the iterative technique, taking only around 30 seconds. SIRT reconstruction was performed with 50 iterations, based on the suggestion of Messaoudi *et al.* (Messaoudil, Boudier *et al.* 2007). After image alignment, the computational step took 135 minutes to complete. With a view towards high throughput characterisation of soot nanoparticles, it appears as though the SIRT method could be too slow regardless of the quality of reconstruction. Our aim is to develop a method to characterise soot samples to a higher level of detail than current methods allow, but within a similar time frame. Characterisation of the average morphology of a soot sample requires the consideration of upwards of 100 particles (La Rocca, Di Liberto *et al.* 2013), and at this rate would take around 1 month simply for the production of the tomograms, and therefore even longer for the full characterisation. Evidently, SIRT must present pronounced improvements in quality in comparison to the WBP method to even be considered.

The quality of reconstruction was assessed by comparing the values of volume, surface area, fractal dimension, and radius of gyration measured from each of the 3D particle models. Comparison of absolute accuracy in the reconstruction of the FG particle is not easy because the true values of the morphological parameters are not known. However, assessment of accuracy could be achieved through the reconstruction of a simulated tilt series for a model of known dimensions. Such methods were employed by Okayay *et al.* in their study of SEM tomography of soot, and Adachi *et al.* in their electron tomography study of soot via the reconstruction of numerically generated spheres (Adachi, Chung *et al.* 2007, Okayay, Heripre *et al.* 2016). However, in this case absolute accuracy was deemed unnecessary for a comparison of the two methods. Simply put, there was a small enough difference in the values of volume, surface area, etc. that it could be concluded that there was no significant difference in the quality of the reconstructions. The values of the morphological parameters are presented in table-1.

Table-1: Time required for, and morphological parameters measured from three reconstructions of FG soot particle

The particle models were produced from the tomogram via manual segmentation. In each slice of the tomogram, the operator differentiated particle matter from background material in the region of interest (ROI) selection using image analysis software ImageJ. Manual segmentation is often preferred in tomogram segmentation as low signal to noise ratio in TEM images renders application of automated/thresholding methods difficult (Fernandez 2012), particularly due to grey level discrepancy within particle matter. However, automated methods have been employed in tomographic studies of soot (Adachi, Chung et al. 2007, Okyay, Heripre et al. 2016). Segmentation results in a 3D voxel map of the particle, which was then characterised using a combination of ImageJ, the boneJ plugin for ImageJ, & self-produced macros for ImageJ.

In terms of visual quality, there was little difference between the two tomograms. Levels of blurring and graininess were fairly similar, although the former was slightly more prominent for SIRT, and the latter slightly more so for the WBP method. *Figure-2* shows sections from within similar areas of the tomograms to illustrate this point. As such, the two tomograms were similarly easy to manually segment, i.e. there was a similar degree of subjectivity in distinguishing particle matter from the background.

Figure-2: Equivalent slices from within WBP and SIRT tomograms, roughly halfway through the depth of the particle. Note similarity in visual quality and similarity between particle matter in WBP and SIRT tomograms. Scale bars are equal to 100 nm.

After segmentation, the content of each of the tomograms were compared by superimposing the ROI sets of one tomogram upon the other tomograms. In doing this, it could easily be seen that the WBP and SIRT tomograms were essentially identical. In every slice the ROI set of one particle appeared to almost perfectly match with the particle matter visible in the other's tomogram. As such, the differences in the measured parameters between these two methods (5.5% in volume, 1.8 % in surface area, and <0.5% difference in D_f & R_g) provide us with an example of the amount of error we could consider acceptable as it derives simply from the manual segmentation by the operator, due in part to subjectivity of the particle matter.

Figure-3: 3D models of FG soot particle visualised in UCSF Chimera. Left to right: WBP, SIRT

It was observed that WBP produces a tomogram not remotely inferior to that produces by SIRT, even with 50 iterations. Given that the former completes so much faster, we can only conclude that WBP is the most appropriate method to use for high throughput reconstruction & characterisation. 3D renderings of the FG soot particle as produced by WBP & SIRT reconstruction are shown in figure-3.

2. Content of tilt series

Following the findings of the previous section, we continued our investigation into optimisation by considering how the number of images contained within a tilt series would affect the speed and quality of 3D reconstruction. Depending on the type of structures being considered and the type of reconstruction algorithm being employed, tomographers use tilt series of varying levels of total tilt ranges and sizes of increments between images (Adachi, Chung et al. 2007, Okyay, Heripre et al. 2016). Some more advanced algorithms are able to produce high quality reconstructions from as few as 10 images (Okyay, Heripre et al. 2016). A reduction in the number of images can save time during acquisition, but perhaps more importantly can help protect more sensitive specimens from damage

caused by excessive beam exposure. With regards to reconstruction of soot-in-oil particles, this latter point is quite important, as mineral oil is a severe contaminant under the electron beam (Shuff and Clarke 1991). In this section, 10 models of the FG soot particle were produced from tilt series that varied in the size of increments between images, and the total tilt range (listed in *table-2*). Reconstructions were performed using the WBP algorithm in IMOD with eTomo.

As in the previous section, the time required for the computational step, and the quality of reconstructions via the values of the measured morphological parameters were considered. The results for the WBP algorithm are the focus of this section given the findings of the previous section.

Table-2: Size of deviations between particles produced from reduced tilt series and FG-WBP-1 particle. FG-WBP-1 results shown as absolute values, deviations shown as %'s of FG-WBP-1 results. Positive values indicate results larger than those for FG-WBP-1, & negative results are those smaller than that for FG-WBP-1.

As WBP reconstruction completed so quickly already (~30 seconds for the FG particle), there was no appreciable decrease in time for the 'reduced' tilt series. In terms of visual quality, most of the tomograms produced were fairly similar. Only the FG-WBP-5 tomogram was of appreciably lower quality, having a grainier appearance with slightly more blurring, which made manual differentiation of particle matter from background more difficult (see *figure-4*). However, as this tomogram was produced from only 25 images in total, and by one of the most basic reconstruction algorithms, the quality was still impressive.

Figure-4: Comparative slices from FG-WBP-1 (left) and FG-WBP-5 (right) tomograms. Images are not post-processed.

As performed in the previous section, the FG-WBP-1 ROI set was superimposed on the other tomograms to compare the content/ordering of particle matter. It was observed that the content of the FG-WBP-2 tomogram was essentially identical to FG-WBP-1 as in every slice the ROI selection was appropriate (as was seen earlier for FG-SIRT-1). This meant there were now three particles whose segmentations could be considered as three separate considerations of the same tomogram. The scale of deviations considered acceptable were barely changed by this, as FG-WBP-2 possessed an intermediate volume, surface area, and fractal dimension. There was a marginal increase in the size of deviations in radius of gyration, though this remained below 0.2%. None of the other tomograms matched the FG-WBP-1 ROI set so closely, though differences were fairly minor and overall the particles were very similar.

To assess their quality more quantitatively, particles produced from the reduced tilt series were compared in terms of their morphological parameters to the FG-WBP-1 particle (or FG-SIRT-1 for the SIRT reconstructions). This was produced from the most complete tilt series and thus the tomogram should be of the highest quality, and the particle should be the most accurate. Large deviations from the values measured for the FG-WBP-1 particle would indicate lower quality reconstruction, whilst deviations comparable to those seen between the FG-WBP-1 & FG-SIRT-1 particles (as discussed in the previous section) indicate a very similar quality.

In terms of this comparison, it was found that almost all of the particles produced from the reduced tilt series showed no deviations from the FG-WBP-1 value that were significantly larger than those deemed due only to the manual segmentation process. It was only the tilt series with the smallest tilt range (FG-

WBP-40) that showed consistently larger deviations, but given that our bounds for acceptable deviations (i.e. those due to subjectivity in manual segmentation) were based on only 3 sets of results, even these may not be significant. These findings are impressive, and potentially very useful considering that we are able to significantly reduce the number of images, and therefore beam exposure, with no large losses in quality.

There was no clear relationship between the number of images a particle was reconstructed from and how much that particle deviated from FG-WBP-1 particle in terms of the morphological parameters, e.g. FG-WBP-3 was closest but was produced from 2nd fewest images. Similarly, there was no strong relationship between the sizes of the deviations in the particular parameters. Such behaviour might indicate that when segmenting these tomograms they were similar enough that the limiting factor in quality was the human operator, rather than the appearance of the tomograms.

The results in this section have shown that WBP reconstruction can produce tomograms of good quality from as few as 25 images over a $\pm 60^\circ$ tilt range. Despite the FG-WBP-5 particle showing no significantly larger deviations than any other particle it is the opinion of the authors that the FG-WBP-3 protocol, reconstructed from 41 images over a ± 60 tilt range, represents the optimal situation as lower image quality for FG-WBP-5 hampered segmentation. As the particle with the largest deviations, FG-WBP-40, was produced from a relatively large number of images, it appears that reducing the number of images via increasing increment sizes between them is better for particle quality than reducing the overall tilt angle range. The main benefits of these findings is to greatly reduce the beam dosage experienced by the soot particles that are imaged. This will greatly reduce the likelihood of carbon contamination from mineral oil obscuring particles, permitting less rigorous sample preparation procedures to be used. Additionally, it will reduce the likelihood of damage or changes to soot structures occurring from beam damage during the acquisition of the tilt series. Despite a reduction in the number of images needed, any improvements to speed of acquisition of a tilt series are expected to be minor as the limiting factor in this case is the tracking of particles between each tilt increment, which takes slightly longer for larger increments sizes.

3. *Effects of interpolation on segmentation quality*

In an attempt to explore possible improvements to the manual segmentation of soot particles, the effects of differing degrees of interpolated segmentation upon the quality of 3D volume reconstruction were investigated. From the tomograms of 9 individual soot particles, multiple versions of each particle were produced by segmentation utilizing 5 different levels of interpolation. The particles in question come from a range of sources, including the flame-generated particle considered thus far, carbon black, and soot-in-oil from both diesel and GDI engines. Particles are shown in TEM images in *figure-5* below. They represent a diverse range of sizes and shapes, from extensively branched 3D structures over a micron in length to highly clustered particles consisting of only a handful of primary particles. Such a set of particles were considered in order to improve the validity of any findings, as to be able to recommend a procedure that may be appropriate for soot particles of any size and morphology. For the FG particle, the FG-WBP-1 tomogram was used, whereas all other particles were reconstructed using the WBP-3 protocol.

For each tomogram, manual selection of the appropriate particle matter was performed on every 20th, 15th, 10th, or 5th slice, and the intermediate ROI selections were produced via linear interpolation, using ImageJ. Additionally, particles were produced by manually considering the particle matter in every slice, with no interpolated results (termed “full” manual segmentation). Leaving larger increments between manually segmented slices can greatly reduce the time required, but leads to inaccuracies in the size and shape of the produced particle as the interpolation does not make any knowledgeable prediction of the intermediate particle matter. The FG-WBP-1 particle already introduced in previous

sections represents a full manual segmentation of the tomogram, in which the ROI selection of particle matter is reviewed to be to the operator's satisfaction in every slice.

Figure-5: Untilted TEM images of the 9 soot particles studied in this section. Scale bar equal to 100 nm

For each tomogram, the time required for segmentation at each level of detail was recorded, and for the resultant particles the morphological parameters used throughout this work were measured. In this case, the values provided by full segmentation (e.g. the FG-WBP-1 & equivalent results for each particle) act as the standard, as they represent the most accurate selection of the particle matter present in the tomogram. Again, deviations from the 'full' values were compared to those between the FG-WBP-1, -WBP-2, and -SIRT-1 particles, as this represents the magnitude of deviations that can occur simply due to subjectivity in particle matter and manual segmentation. In an ideal scenario, interpolated segmentation will allow time to be saved during the segmentation whilst still producing a particle that falls within, or close to, the bounds of 'operator uncertainty' set by these 3 particles.

The average time required for the different levels of interpolated segmentation is presented in *figure-6*, as a percentage of the time that was required for 'full' segmentation of each particle. The average deviations in volume at each interpolation level are also presented as percentages of the 'full' volume of each particle. Note that all deviations in volume were negative, i.e. all particles produced by interpolated segmentation always had lower volumes in comparison to fully segmented particles.

Figure-6: Average decreases in time taken for the various levels of interpolated segmentation, presented as % of time required for full manual segmentation (solid line, left y-axis). Also showing average decrease in particle volume for each level of interpolation, as a % of the volume of the fully manually segmented particle (dashed line, right y-axis). Error bars represent 95% confidence intervals

At each level of segmentation, the amount of time saved was relatively proportional to the number of images that were manually segmented, as would be expected. Of course, improvements to the speed of segmentation are meaningless unless the effects upon the quality of the characterisation are also considered. For each of the agglomerates reconstructed, the morphological parameters of the 'interpolated particles' were compared to those of the fully segmented particle. The changes in the values of the parameters were quantified as a percentage of the 'full' values, and the results were averaged to give those shown in *table-3*. It should be noted that the values of the various parameters always decreased for interpolated particles compared to the 'full' particles, because the particular interpolation method applied with ImageJ had the tendency to underestimate particle matter that was not continuous between adjacent manually segmented slices. The error bars shown are 95% confidence intervals based on the 9 different particles considered.

Table-3: Decreases in time & morphological parameters at each level of interpolated segmentation as % of values for 'full' manual segmentation. Values are averages of those for all 9 particles.

As mentioned, deviations in the values of the morphological parameters was compared to the size of those observed between the FG-WBP-1, -WBP-2, & -SIRT-1 particle. These were: 5.5% in volume, 1.8% in surface area, 0.4% in fractal dimension, and 0.2% in radius of gyration. In terms of volume only '5th slice' interpolation produced particles that were within the acceptable limits, with an average

decrease of 3.5% compared to fully segmented particles. At an average decrease of 8.4%, 10th slice interpolated presented a more significant reduction in quality. Volume losses up to the '15th slice' level remained fairly linear, but 20th slice segmentation showed a severe drop in quality, with an average decrease of 26% in volume. The data suggested that particles with higher volume/surface area ratios (such as *Carbon Black & GDI-E*) lose less volume with interpolation, though ROI selection of the slices took comparatively longer.

The effects of interpolation on the accuracy of the particle surface area were fairly similar. At the 5th slice level, a decrease of 3.9% represented the most acceptable levels of information loss. This was larger than the maximum difference observed between the 3 particles acting as the standard (1.8%), but since there are only 3 results to which we compare they are considered more as guideline than a strict threshold. Losses in surface area at the 10th & 15th slice levels were slightly larger than seen for volume, though at the 20th slice level they were very similar. Again it appeared that particles with higher volume/surface area ratios were less prone to losses in surface area, though as mentioned these particles generally took longer to segment.

Overall, losses in fractal dimension and radius of gyration due to interpolated segmentation were much less pronounced. In the case of the fractal dimension, all levels up to 15th slice segmentation were within the limits suggested by the standards, but even at the 20th slice level the losses are small in absolute terms, at just 0.71% on average (maximum of 1.5% at upper confidence limit). With regards to radius of gyration, interpolated segmentation at any level causes decreases larger than were seen for the 3 particles acting as our standards. However, in absolute terms the losses are again rather small, limited to 5.2% at the 20th slice level (8.2% at upper confidence interval), and at just 0.9% at the 5th slice level. For these two shape descriptor parameters, it was mostly the particles with a combination of low volume and small z-depth that had the greatest losses as the level of detail in the interpolated segmentation decreased.

Overall, our data on these nine agglomerates suggested that interpolated segmentation between every 5th slice would provide particles that could be characterised to a level of accuracy similar to that of full manual segmentation. At this level of interpolation, segmentation could be expected to take around 40% less time than a fully manual inspection of the tomogram, concurrent with decreases of around 4.5% in volume, 4.9% in surface area, 0.3% in fractal dimension, and 1.6% in radius of gyration (all upper limits of the 95% confidence intervals).

The conclusion of our investigations into the optimisation of 3D reconstruction is to suggest the following conditions: $\pm 60^\circ$ tilt series with an image every 3° (41 images total), WBP reconstruction, and interpolated segmentation between every 5th slice. By comparison, a typical reconstruction procedure for the study of soot nanoparticles, based on the conditions in the work of van Poppel (van Poppel, Friedrich et al. 2005), Adachi (Adachi, Chung et al. 2007, Adachi and Buseck 2008), Okyay (Okyay, Heripre et al. 2016), and Cabie (Cabié, Gailhanou et al. 2016), could be: $\pm 60^\circ$ tilt series with an image every 1° (121 images total), single-axis SIRT with 50 iterations, and full manual segmentation. Our optimised method was compared to this averaged protocol for reconstruction of the FG soot particle for the time required. In terms of the number of images used, potential beam dosage experienced by the sample is cut by two thirds. This is particularly advantageous for soot-in-oil samples, where contamination causing obscuring is a major problem. The time required for SIRT reconstruction (computational step only) of the tilt series was 135 minutes, compared to <1 minute for WBP reconstruction. The time required for alignment etc. pre-reconstruction was identical. Full manual segmentation of the SIRT tomogram required 144 minutes, compared to 79 minutes for segmentation in every 5th slice. Overall, our optimised method reduced the time required by 71.5%.

Reconstruction of simulated soot structures

For each synthetic structure, 3 tilt series were generated: $\pm 80^\circ$ every 1° (161 images), $\pm 60^\circ$ every 1° (121 images), and $\pm 60^\circ$ every 3° (41 images) as per the optimal result of the previous section. Each tilt series was reconstructed in order to understand the extent of elongation and quality of reconstruction as a function of tilt range and number of images. Segmentation was carried out manually using ImageJ. Segmented models were characterised using ImageJ & Matlab, as was used for the real-soot reconstructions. Examples of simulated 3D models and tilt series are shown in *figure-7*.

Figure-7: 3D rendering of synthetic particle ‘random12’, and TEM-style 2D projections from the simulated tilt series (tilt axis runs horizontally through the particle in the plane of the page)

Simple sphere reconstruction

To initiate this section of our study, a simple 3D model of a sphere was created in order to be reconstructed, similar to the work by Okyay (Okayay, Heripre et al. 2016). A $\pm 60^\circ$ tilt series was created for the 350px diameter sphere, and the contrast was altered, and artificial noise was added so that it more closely resembled a genuine TEM tilt series. The sphere was subject to WBP reconstruction and full manual segmentation (in contrast to SIRT reconstruction and automated segmentation performed by Okyay). The reconstructed model was 15% longer in the z-direction with no significant difference in the x- & y-directions, resulting in a lemon-like shape. The volume and surface area of the reconstructed sphere was 2.3% and 2.4% larger than the original values respectively. By comparison, Okyay’s $\pm 80^\circ$ (with 10° increments) reconstruction of a 100 px sphere using SIRT with 100 iterations resulted in no elongation, and deviations in volume and surface area of 0.6% and 7% respectively. The significant deviations between our results is likely due to differences in the sizes of the spheres, reconstruction methods, tilt series content, and segmentation method. As already mentioned, it is known that the extent of the deviations due to the missing wedge depends upon the morphology of the object in question, and this sphere reconstruction provides a useful data point to compare the reconstruction of the more complicated models to.

Elongation

The $\pm 80^\circ$ tilt series represents the largest tilt range that can be reconstructed using eTomo. The manual determination of the z-length of the particles was performed without prior referral to the original z-length, to limit the effects of bias. The average elongation for the 14 synthetic particles reconstructed from $\pm 80^\circ$ tilt series was $0.4\% \pm 0.2\%$ (95% CI). In terms of 1px thick slices of the tomogram, this is equivalent to at most 2 slices larger than the original models. At this maximum tilt range, WBP reconstruction apparently results in no significant elongation of the particle matter.

The $\pm 60^\circ$ tilt series represents the tilt range that can most typically be achieved in routine soot sample analysis. At this tilt range, the average elongation was $4.0\% \pm 1.0\%$ (95% CI). This is clearly much smaller than seen for the simple sphere reconstruction and the prediction from Radermacher’s equation. Elongation has dependency upon the shape of the specimen, as soot-style synthetic particles were much less affected than the simple sphere (15% vs average 4%). Additionally, variability in the shapes of the 14 soot-style particles is reflected in the relatively large confidence interval ($\pm 1.0\%$).

The $\pm 60^\circ$ with 3° increments tilt-series represents the fewest images from which good quality tomograms can be produced, as per the results of the previous sections. Unsurprisingly, the measured elongations are very similar to those of the 121 image $\pm 60^\circ$ tilt series, being on average $+3.8\% \pm 0.8\%$ (95% CI). As seen previously, the extent of noise and blurring in these tomograms did increase, though were not severe enough to significantly hamper the segmentation process. Based on the similarity of

the synthetic particles to real soot agglomerates, we can be reasonably confident that the extent of elongation in real situations is similar to that seen in this work.

Full Morphological Analysis

Full morphological analysis was carried out on simulated particles named: random2, random7, random9, and random12. Models are shown in *figure-8*, and results detailed in *table-4*.

Figure-8: 3D renderings of particles (left to right): random12, random2, random5, random7. Generated using UCSF Chimera (Yang, Lasker et al. 2012)

Table-4: Size of the deviations in morphological parameters of reconstructed structures in comparison to the original models. X,Y,Z_{max} refer to the maximum distance in those respective direction (Z perpendicular to, and X & Y parallel to the tilt axis).

Generally, deviations in the maximum x & y dimensions of the reconstructed particles were insignificant, with only a single result > 1%. The size of the elongation for each particle is shown in the Z_{max} column, and again shows the variation of elongation with particle morphology. Despite only minor increases in the maximum dimensions of the particles, there is clearly a significant overestimation of particle volume resulting from reconstruction and segmentation. The significant thickening of the particle is likely due to blurring artefacts causing over-selection in manual segmentation. Blurring can have a pronounced effect on shielded surfaces (particularly those towards the middle of the structure) acting to increase particle volume and reduce surface area, as demonstrated from a 2D viewpoint in *figure-9*.

Figure-9: Side-on representative of structure formed from primary particle-style spheres, with areas prone to blurring highlighted. Area and perimeter values (in pixels) shown for perfect segmentation and blur-affected segmentation, showing increase in area (*cf.* Volume in 3D) and decrease in perimeter (*cf.* surface area in 3D)

In practice, agglomerate volume is not of much use individually, and parameters like surface area and fractal dimension offer a more interesting account of the fractal morphology, and are more relevant to the behaviour and effects of the particles. For those such parameters, reconstructed volumes fare much better at in comparison to the true values. Variation in surface area, an important parameter known to relate directly to cytotoxicity (Oberdörster, Celein et al. 1995), greenhouse effects (Khalizov, Xue et al. 2009), and engine wear and friction (Green and Lewis 2008), is rather small (<3%). Similarly, radius of gyration and fractal dimension measured from reconstructions are within 2% of the original values, implying that the particles retain their particular fractal identity after reconstruction. If these results are indeed representative of those for real soot agglomerates (as we have tried to the best of our abilities to make so, with mimic of fractal geometry etc.) it represents an extraordinary level of accuracy, especially in comparison to the compounding of known and unknown errors in 2D-TEM characterisation that was described in earlier sections.

3-D soot-in-oil structures

Although soot characteristics are effected by fuel, injection strategy, and operating conditions, some key similarities and differences between flame generated, GDI and diesel soot have emerged from this study. The improvements to the efficiency of the 3D morphology characterisation procedure detailed in this paper mean that it has been possible for the authors to begin to characterise multiple soot structures from particular soot samples in a timely manner. Whilst a sample large enough for statistically relevant characterisations (*e.g.* >200 individual agglomerates) has not yet been reconstructed, a sufficient number have been to allow a qualitative understanding of the typical 3D characteristics of agglomerates

from different samples. So far, carbon black, flame-generated soot, diesel soot-in-oil, and gasoline soot-in-oil samples have been considered.

Figure-10: Examples of typical structures of flame-generated, carbon black, diesel soot-in-oil, and GDI soot-in-oil. In each image, the z-direction is perpendicular to the scale bar (vertical), as the particles are being viewed from the side on. GDI-D & Diesel soot structures are primarily just 1 primary particle thick in z-direction. Scale bar equal to 100nm in each image.

Typically, flame-generated soot and carbon black nanoparticles showed an extensive, fractal, 3D structure, *i.e.* particle matter extended in all 3 dimensions from the centre, in the standard structure of agglomerated spherical primary-particles.

Diesel soot-in-oil particles were also fractal aggregates of primary particles. However, in contrast to the flame-generated soots they were notably 2-dimensional, in general being just a single primary particle thick in the z-direction (perpendicular to TEM grid).

The structure of soot agglomerates in the GDI drain oil was also fairly typical in terms of a fractal arrangement of primary particles. Similarly to diesel soot-in-oil, the structures were fairly small and their extension in space primarily limited to just 2 dimensions. However, GDI soot-in-oil structures weren't quite as 2-dimensional, as structures were generally at least 2 primary particles thick in the z-direction in some sections of the particle. Examples of 3D models of soot structures from these different sources are shown in figure-10.

Obviously such observations are qualitative, but are a promising indication of the type of extra information 3D morphology characterisation can offer. Due to the lack of depth perception, the deficiency of 3D character in diesel and GDI soot-in-oil is not clear to see in 2D-TEM projections, and only with 3D reconstructions we can truly begin to appreciate, particularly quantitatively, the 3rd dimension of soot structures. The gasoline soot has smaller primary particles, typically 30nm, than carbon black (mean 48nm) but larger than diesel soot, mean 20nm [26].

Flame generated soot and carbon black are often used to synthetically contaminate lubricants. It is worth mentioning that the FG particle considered in this study showed a high morphological complexity; we estimate that $n_{po} = 222$, *via* 3D volume divided by the assumed spherical, 25nm diameter primary particle volume. Typically only 4.5% of the agglomerates sampled from diesel exhaust are composed of more than 200 primary particles [42]. This raise a question on the use of CB and FG soot as a surrogate for engine soot.

Conclusions

Highly detailed characterisation of soot nanoparticles can help to more fully understand soot formation and its health and environmental implications. Due to their size, transmission electron microscopy (TEM) has been the most widely used method to achieve this. TEM produces 2D projections of soot agglomerates, and the lack of depth perception leads to underestimation of commonly measured morphological. High quality 3D reconstruction of soot agglomerates would eliminate this error. However, 3D study of soot aggregates is in its infancy, and a major barrier to the success of the technique is its speed.

3D volume reconstruction of flame-generated and soot-in-oil nanoparticles was successfully achieved through the use of bright-field transmission electron microscopy. Optimisation of 3D-TEM methods allows for high-throughput soot nanoparticles analysis. In comparison to a typical procedure, our

optimised methodology reduced the time required by over 70% and cut beam exposure by two thirds with no appreciable decrease in the quality of the produced 3D model.

WBP and SIRT reconstruction algorithms generated tomograms of good quality with no significant difference in morphological parameters; the WBP is considerably quicker than the iterative technique. Interpolated segmentation between every 5th slice allowed for a level of accuracy similar to that of full manual segmentation; with a 40% reduction in time.

Flame-generated particle and carbon black under study showed an extensive 3D structure; on the contrary, the diesel soot-in-oil particle was notably 2-dimensional, being just a single primary particle thick in the z-direction. Gasoline soot-in-oil structures were generally at least 2 primary particles thick in the z-direction in some sections of the particle.

Carbon black showed a mean primary particle diameter of 48nm, while gasoline soot was on average typically around 30nm and larger than diesel soot.

Synthetic soot-like agglomerates and their TEM-style tilt series were generated using image processing software ImageJ. These structures were subjected to WBP reconstruction on tilt-series of various compositions. The average elongation factor for 14 synthetic structures was calculated as 0.2% for $\pm 80^\circ$ tilt series, and 4% for $\pm 60^\circ$ tilt series. In terms of morphological properties, volume was significantly overestimated due to the effects of blurring. However, values of surface area, radius of gyration, and fractal dimension were close to the original values (<3% deviation).

Acknowledgements

The financial support through the scholarship provided by EPSRC DTG Centre in Complex Systems and Processes (EP/M506588/1) for one of the authors, E. Haffner-Staton, is also acknowledged. The authors would also like to acknowledge the support received from EPSRC Impact Acceleration Account.

References

- Regulation (EC) No 715/2007 on type approval of motor vehicles with respect to emissions from light passenger and commercial vehicles (Euro 5 and Euro 6) and on access to vehicle repair and maintenance information [2007]. OJ L 171.**
- Adachi, K. and P. R. Buseck (2008). "Internally mixed soot, sulfates, and organic matter in aerosol particles from Mexico City." *Atmospheric Chemistry and Physics* 8(21): 6469-6481.**
- Adachi, K., S. H. Chung, H. Friedrich and P. R. Buseck (2007). "Fractal parameters of individual soot particles determined using electron tomography: Implications for optical properties." *Journal of Geophysical Research-Atmospheres* 112(D14).**
- Agulleiro, J. I. and J. J. Fernandez (2011). "Fast tomographic reconstruction on multicore computers." *Bioinformatics* 27(4): 582-583.**
- Ali, R. A., M. J. Landsberg, E. Knauth, G. P. Morgan, B. J. Marsh and B. Hankamer (2012). "A 3D Image Filter for Parameter-Free Segmentation of Macromolecular Structures from Electron Tomograms." *Plos One* 7(3).**
- Antusch, S., M. Dienwiebel, E. Nold, P. Albers, U. Spicher and M. Scherge (2010). "On the tribochemical action of engine soot." *Wear* 269(1): 1-12.**
- Asango, A., A. La Rocca and P. Shayler (2014). Investigating the Effect of Carbon Nanoparticles on the Viscosity of Lubricant Oil from Light Duty Automotive Diesel Engines, SAE Technical Paper.**
- Batenburg, K. J., S. Bals, J. Sijbers, C. Kubel, P. A. Midgley, J. C. Hernandez, U. Kaiser, E. R. Encina, E. A. Coronado and G. Van Tendeloo (2009). "3D imaging of nanomaterials by discrete tomography." *Ultramicroscopy* 109(6): 730-740.**
- Batenburg, K. J. and J. Sijbers (2011). "DART: A Practical Reconstruction Algorithm for Discrete Tomography." *Ieee Transactions on Image Processing* 20(9): 2542-2553.**

- Bonatesta, F., E. Chiappetta and A. La Rocca (2014). "Part-load particulate matter from a GDI engine and the connection with combustion characteristics." Applied Energy 124: 366-376.
- Brodoy, D. M. and R. Rosenzweig (2011). "Deposition of fractal-like soot aggregates in the human respiratory tract." Journal of Aerosol Science 42(6): 372-386.
- Cabié, M., M. Gailhanou and D. Ferry (2016). Electron tomography: influence of defocus on the determination of reconstructed soot aggregates' surface and volume. European Microscopy Congress 2016: Proceedings, Wiley Online Library.
- Chinas-Castillo, F. and H. A. Spikes (2004). "The behavior of diluted sooted oils in lubricated contacts." Tribology Letters 16(4): 317-322.
- Clague, A. D. H., J. Donnet, T. K. Wang and J. C. M. Peng (1999). "A comparison of diesel engine soot with carbon black." Carbon 37(10): 1553-1565.
- Devlin, C. C., C. Passut, R. Campbell and T.-C. Jao (2008). Biodiesel fuel effect on diesel engine lubrication, SAE Technical Paper.
- Doube, M., M. M. Klosowski, I. Arganda-Carreras, F. P. Cordelieres, R. P. Dougherty, J. S. Jackson, B. Schmid, J. R. Hutchinson and S. J. Shefelbine (2010). "BoneJ Free and extensible bone image analysis in ImageJ." Bone 47(6): 1076-1079.
- Fernandez, J. J. (2012). "Computational methods for electron tomography." Micron 43(10): 1010-1030.
- Fernandez, J. J. (2013). "Computational methods for materials characterization by electron tomography." Current Opinion in Solid State & Materials Science 17(3): 93-106.
- Frank, J. (2008). Electron tomography: methods for three-dimensional visualization of structures in the cell. New York, Springer.
- Friedrich, H., S. J. Guo, P. E. de Jongh, X. L. Pan, X. H. Bao and K. P. de Jong (2011). "A Quantitative Electron Tomography Study of Ruthenium Particles on the Interior and Exterior Surfaces of Carbon Nanotubes." Chemoschem 4(7): 957-963.
- Green, D. A. and R. Lewis (2007). "Effect of soot on oil properties and wear of engine components." Journal of Physics D-Applied Physics 40(18): 5488-5501.
- Green, D. A. and R. Lewis (2008). "The effects of soot-contaminated engine oil on wear and friction: a review." Proceedings of the Institution of Mechanical Engineers Part D-Journal of Automobile Engineering 222(D9): 1669-1689.
- Green, D. A., R. Lewis and R. S. Dwyer-Joyce (2006). "Wear effects and mechanisms of soot-contaminated automotive lubricants." Proceedings of the Institution of Mechanical Engineers Part J-Journal of Engineering Tribology 220(J3): 159-169.
- Gwaze, P., O. Schmid, H. J. Annegarn, M. O. Andreae, J. Huth and G. Helas (2006). "Comparison of three methods of fractal analysis applied to soot aggregates from wood combustion." Journal of Aerosol Science 37(7): 820-838.
- Hawkes, P. W. (2007). The electron microscope as a structure projector. Electron tomography, Springer: 83-111.
- Heywood, J. B. (1988). Internal combustion engine fundamentals. New York, McGraw Hill.
- Hu, E., X. Hu, T. Liu, L. Fang, K. D. Dearn and H. Xu (2013). "The role of soot particles in the tribological behavior of engine lubricating oils." Wear 304(1): 152-161.
- Hu, E. Z., X. G. Hu, T. X. Liu, L. Fang, K. D. Dearn and H. M. Xu (2013). "The role of soot particles in the tribological behavior of engine lubricating oils." Wear 304(1-2): 152-161.
- Ishiguro, T., Y. Takatori and K. Akihama (1997). "Microstructure of diesel soot particles probed by electron microscopy: First observation of inner core and outer shell." Combustion and Flame 108(1-2): 231-234.
- Kajino, M. and Y. Kondo (2011). "EMTACS: Development and regional-scale simulation of a size, chemical, mixing type, and soot shape resolved atmospheric particle model." Journal of Geophysical Research-Atmospheres 116.
- Khalizov, A. F., H. X. Xue, L. Wang, J. Zheng and R. Y. Zhang (2009). "Enhanced Light Absorption and Scattering by Carbon Soot Aerosol Internally Mixed with Sulfuric Acid." Journal of Physical Chemistry A 113(6): 1066-1074.
- Kittelson, D. B., J. L. Ambs and H. Hadjkacem (1990). Particulate emissions from diesel engines: influence of in-cylinder surface, SAE Technical Paper.

- Koylu, U. O., G. M. Faeth, T. L. Farias and M. G. Carvalho (1995). "Fractal and Projected Structure Properties of Soot Aggregates." Combustion and Flame 100(4): 621-633.
- Koylu, U. O., C. S. McEnally, D. E. Rosner and L. D. Pfefferle (1997). "Simultaneous measurements of soot volume fraction and particle size/microstructure in flames using a thermophoretic sampling technique." Combustion and Flame 110(4): 494-507.
- Kremer, J. R., D. N. Mastrorarde and J. R. McIntosh (1996). "Computer visualization of three-dimensional image data using IMOD." Journal of Structural Biology 116(1): 71-76.
- La Rocca, A., F. Bonatesta, M. W. Fay and F. Campanella (2015). "Characterisation of soot in oil from a gasoline direct injection engine using Transmission Electron Microscopy." Tribology International 86: 77-84.
- La Rocca, A., J. Campbell, M. W. Fay and O. Orhan (2016). "Soot-in-Oil 3D Volume Reconstruction Through the Use of Electron Tomography: An Introductory Study." Tribology Letters 61(1).
- La Rocca, A., G. Di Liberto, P. Shayler, C. Parmenter and M. Fay (2014). "A novel diagnostics tool for measuring soot agglomerates size distribution in used automotive lubricant oils." SAE International Journal of Fuels and Lubricants 7(2014-01-1479): 301-306.
- La Rocca, A., G. Di Liberto, P. J. Shayler and M. W. Fay (2013). "The nanostructure of soot-in-oil particles and agglomerates from an automotive diesel engine." Tribology International 61: 80-87.
- La Rocca, A., G. Di Liberto, P. J. Shayler, C. D. J. Parmenter and M. W. Fay (2014). "Application of nanoparticle tracking analysis platform for the measurement of soot-in-oil agglomerates from automotive engines." Tribology International 70: 142-147.
- Lapuerta, M., R. Ballesteros and F. J. Martos (2006). "A method to determine the fractal dimension of diesel soot agglomerates." Journal of Colloid and Interface Science 303(1): 149-158.
- Lapuerta, M., R. Ballesteros and F. J. Martos (2009). "The effect of diesel engine conditions on the size and morphology of soot particles." International Journal of Vehicle Design 50(1-4): 91-106.
- Lapuerta, M., F. J. Martos and J. M. Herreros (2007). "Effect of engine operating conditions on the size of primary particles composing diesel soot agglomerates." Journal of Aerosol Science 38(4): 455-466.
- Liu, C. M., S. Nemoto and S. Ogano (2003). "Effect of soot properties in diesel engine oils on frictional characteristics." Tribology Transactions 46(1): 12-18.
- Mari, X., J. Lefevre, J. P. Torretón, Y. Bettarel, O. Pringault, E. Rochelle-Newall, P. Marchesiello, C. Menkes, M. Rodier, C. Migon, C. Motegi, M. G. Weinbauer and L. Legendre (2014). "Effects of soot deposition on particle dynamics and microbial processes in marine surface waters." Global Biogeochemical Cycles 28(7): 662-678.
- Martos, F. J., M. Lapuerta, J. J. Expósito and E. Sanmiguel-Rojas (2017). "Overestimation of the fractal dimension from projections of soot agglomerates." Powder Technology.
- Mathis, U., M. Mohr, R. Kaegi, A. Bertola and K. Boulouchos (2005). "Influence of diesel engine combustion parameters on primary soot particle diameter." Environmental Science & Technology 39(6): 1887-1892.
- Medalia, A. I. (1970). "Morphology of aggregates: VI. Effective volume of aggregates of carbon black from electron microscopy; application to vehicle absorption and to die swell of filled rubber." Journal of Colloid and Interface Science 32(1): 115-131.
- Messaoudil, C., T. Boudier, C. O. S. Sorzano and S. Marco (2007). "TomoJ: tomography software for three-dimensional reconstruction in transmission electron microscopy." Bmc Bioinformatics 8.
- Mezerji, H. H., W. Van den Broek and S. Bals (2011). "A practical method to determine the effective resolution in incoherent experimental electron tomography." Ultramicroscopy 111(5): 330-336.
- Midgley, P. A. and M. Weyland (2003). "3D electron microscopy in the physical sciences: the development of Z-contrast and EFTEM tomography." Ultramicroscopy 96(3-4): 413-431.
- Moisy, F. (2008). "Computing a fractal dimension with Matlab: 1D, 2D and 3D Box-counting." Laboratory FAST, University Paris Sud, Paris.

- Neer, A. and U. O. Koylu (2006). "Effect of operating conditions on the size, morphology, and concentration of submicrometer particulates emitted from a diesel engine." Combustion and Flame 146(1-2): 142-154.
- Oberdörster, G., R. M. Celein, J. Ferin and B. Weiss (1995). "Association of particulate air pollution and acute mortality: involvement of ultrafine particles?" Inhalation toxicology 7(1): 111-124.
- Okuy, G., E. Heripre, T. Reiss, P. Haghi-Ashtiani, T. Auger and F. Enguehard (2016). "Soot aggregate complex morphology: 3D geometry reconstruction by SEM tomography applied on soot issued from propane combustion." Journal of Aerosol Science 93: 63-79.
- Omidvarborna, H., A. Kumar and D. S. Kim (2015). "Recent studies on soot modeling for diesel combustion." Renewable & Sustainable Energy Reviews 48: 635-647.
- Orhan, O., E. Haffner-Staton, A. La Rocca and M. Fay (2016). "Characterisation of flame-generated soot and soot-in-oil using electron tomography volume reconstructions and comparison with traditional 2D-TEM measurements." Tribology International 104: 272-284.
- Radermacher, M. and W. Hoppe (1980). Properties of 3-D reconstruction from projections by conical tilting compared to single-axis tilting. Proceedings of the 7th European Congress on Electron Microscopy.
- Richter, H. and J. B. Howard (2000). "Formation of polycyclic aromatic hydrocarbons and their growth to soot - a review of chemical reaction pathways." Progress in Energy and Combustion Science 26(4-6): 565-608.
- Rogak, S. N. and R. C. Flagan (1992). "Characterization of the Structure of Agglomerate Particles." Particle & Particle Systems Characterization 9(1): 19-27.
- Sachdeva, K. and A. K. Attri (2008). "Morphological characterization of carbonaceous aggregates in soot and free fall aerosol samples." Atmospheric Environment 42(5): 1025-1034.
- Salehi, F. M., D. N. Khaemba, A. Morina and A. Neville (2016). "Corrosive-Abrasive Wear Induced by Soot in Boundary Lubrication Regime." Tribology Letters 63(2).
- Schenk, M., S. Lieb, H. Vieker, A. Beyer, A. Golzhauser, H. Wang and K. Kohse-Hoinghaus (2015). "Morphology of nascent soot in ethylene flames." Proceedings of the Combustion Institute 35: 1879-1886.
- Shuff, P. J. and L. J. Clarke (1991). "Imaging of Lubricating Oil Insolubles by Electron-Microscopy." Tribology International 24(6): 381-387.
- Su, D. S., R. E. Jentoft, J.-O. Müller, D. Rothe, E. Jacob, C. Simpson, Ž. Tomović, K. Müllen, A. Messerer and U. Pöschl (2004). "Microstructure and oxidation behaviour of Euro IV diesel engine soot: a comparative study with synthetic model soot substances." Catalysis today 90(1): 127-132.
- Suhre, B. R. and D. E. Foster (1992). In-cylinder soot deposition rates due to thermophoresis in a direct injection diesel engine, SAE Technical Paper.
- Uy, D., M. A. Ford, D. T. Jayne, A. E. O'Neill, L. P. Haack, J. Hargas, M. J. Jagner, A. Sammut and A. K. Gangopadhyay (2014). "Characterization of gasoline soot and comparison to diesel soot: Morphology, chemistry, and wear." Tribology International 80: 198-209.
- van Poppel, L. H., H. Friedrich, J. Spinsby, S. H. Chung, J. H. Seinfeld and P. R. Buseck (2005). "Electron tomography of nanoparticle clusters: Implications for atmospheric lifetimes and radiative forcing of soot." Geophysical Research Letters 32(24).
- Virtanen, A. K. K., J. M. Ristimäki, K. M. Vaaraslahti and J. Keskinen (2004). "Effect of engine load on diesel soot particles." Environmental Science & Technology 38(9): 2551-2556.
- Yang, Z., K. Lasker, D. Schneidman-Duhovny, B. Webb, C. C. Huang, E. F. Pettersen, T. D. Goddard, E. C. Meng, A. Sali and T. E. Ferrin (2012). "UCSF Chimera, MODELLER, and IMP: An integrated modeling system." Journal of Structural Biology 179(3): 269-278.
- Yon, J., R. Lemaire, E. Therssen, P. Desgroux, A. Coppalle and K. F. Ren (2011). "Examination of wavelength dependent soot optical properties of diesel and diesel/rapeseed methyl ester mixture by extinction spectra analysis and LII measurements." Applied Physics B-Lasers and Optics 104(2): 253-271.
- Zhao, L. F., X. M. Yu, D. C. Qian, W. Dong, P. Sun, L. He and S. Yang (2013). "The effects of EGR and ignition timing on emissions of GDI engine." Science China-Technological Sciences 56(12): 3144-3150.

For Review Only

Algorithm	Reconstruction time (mins)	Z-depth (1 nm slices)	Volume (nm ³)	Surface Area (nm ²)	Fractal Dimension	Radius of Gyration (nm)
WBP	0.5	203	1,819,000	268,900	2.367	148.6
SIRT	135	197	1,920,000	273,800	2.377	148.5

Table-1: Time required for, and morphological parameters measured from three reconstructions of FG soot particle.

Sample	Tilt range	Increment size	Total # images	Volume (nm ³)	Surface area (nm ²)	Fractal dimension	Radius of gyration (nm)
FG-WBP-1	±60	1°	121	1,819,000	269,000	2.367	148.6
FG-WBP-2	±60	2°	61	4.5 %	0.6 %	0.04 %	0.1 %
FG-WBP-3	±60	3°	41	1.5 %	-1.3 %	0.45 %	-0.2 %
FG-WBP-5	±60	5°	25	-2.6 %	-4.8 %	-0.19 %	0.0 %
FG-WBP-50	±50	1°	101	-4.7 %	-4.5 %	0.45 %	-0.9 %
FG-WBP-40	±40	1°	81	7.0 %	4.5 %	0.08 %	0.1 %

Table-2: Size of deviations between particles produced from reduced tilt series and FG-WBP-1 particle. FG-WBP-1 results shown as absolute values, deviations shown as %'s of FG-WBP-1 results. Positive values indicate results larger than those for FG-WBP-1, & negative results are those smaller than that for FG-WBP-1.

Segmentation Protocol	time required (% of full)	Volume decrease (% of full)	Surface area decrease (% of full)	D _f decrease (% of full)	R _g decrease (% of full)
5 th	58.7	3.4	3.9	0.08	0.93
10 th	32.5	8.4	10.7	0.34	2.29
15 th	21.7	11.2	15.8	0.42	3.53
20 th	17.5	26.4	25.8	0.71	5.21

Table-3: Decreases in time & morphological parameters at each level of interpolated segmentation as % of values for 'full' manual segmentation. Values are averages of those for all 9 particles.

% deviations vs original values							
Particle	X _{max}	Y _{max}	Z _{max}	Volume	Surface Area	R _g	D _f
Random2	-0.40	0.95	2.92	25.69	-2.29	0.76	2.655
Random7	0.37	0.30	4.43	26.96	0.61	-1.88	2.651
Random9	0.31	0.54	4.23	24.42	1.64	0.98	2.670
Random12	1.34	0.78	2.72	36.17	2.76	-1.18	2.668

Table-4: Size of the deviations in morphological parameters of reconstructed structures in comparison to the original models. X,Y,Z_{max} refer to the maximum distance in those respective direction (Z perpendicular to, and X & Y parallel to the tilt axis).

Morphological characterisation is an important initial step in developing appropriate strategies to minimise the problems caused by soot emissions. Due to the highly irregular nature of soot particles three-dimensional characterisation techniques would assist in better extracting parameters necessary, to potentially understand the role of soot particles on human health, their greenhouse effect via absorption of visible light, degradation of marine habitats and on the tribological behaviour of engine lubricating oils. Due to the lack of depth perception, the deficiency of 3D character of engine soot is not clear to see in 2D-TEM projections, and only with 3D reconstructions we can truly begin to appreciate, particularly quantitatively, the 3rd dimension of soot structures.

This demonstrates the feasibility of electron tomography for three-dimensional characterisation of soot nanoparticles; proposing a new optimised methodology to give measurable 3D soot models that are of practical use to industry by reducing time required by over 70% in comparison to a typical procedure.

For Review Only

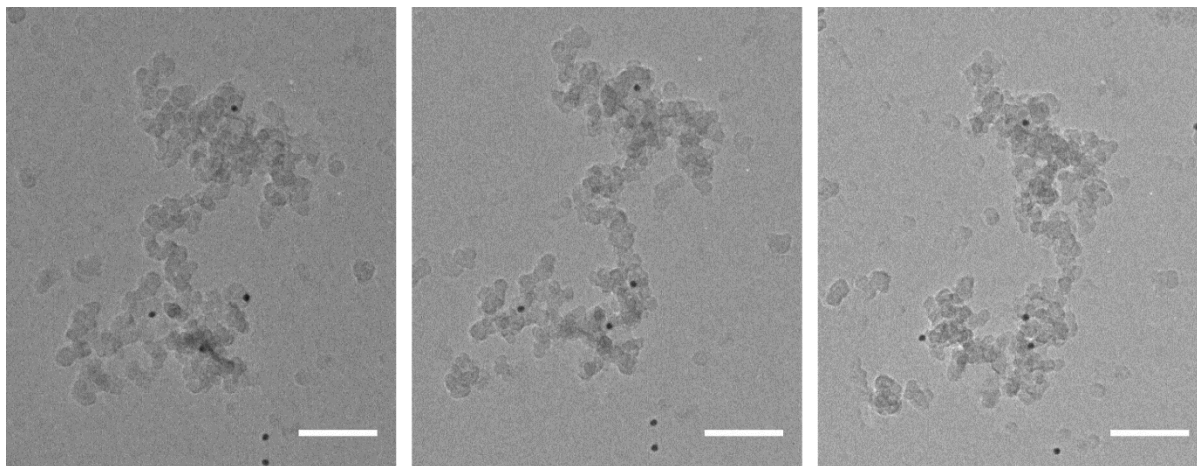


Figure-1: TEM projections of flame-generated soot particle captured at -30° , 0° , and $+30^\circ$ tilt angles. Scale bar equal to 100 nm

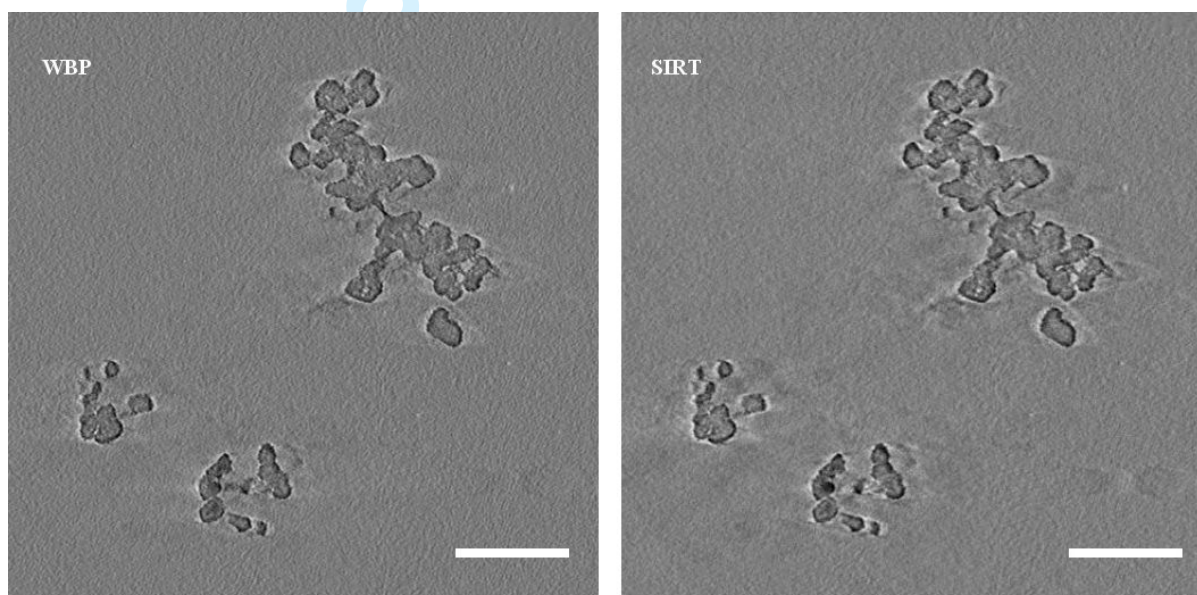


Figure-2: Equivalent slices from within WBP and SIRT tomograms, roughly halfway through the depth of the particle. Note similarity in visual quality and similarity between particle matter in WBP and SIRT tomograms. Scale bars are equal to 100 nm.

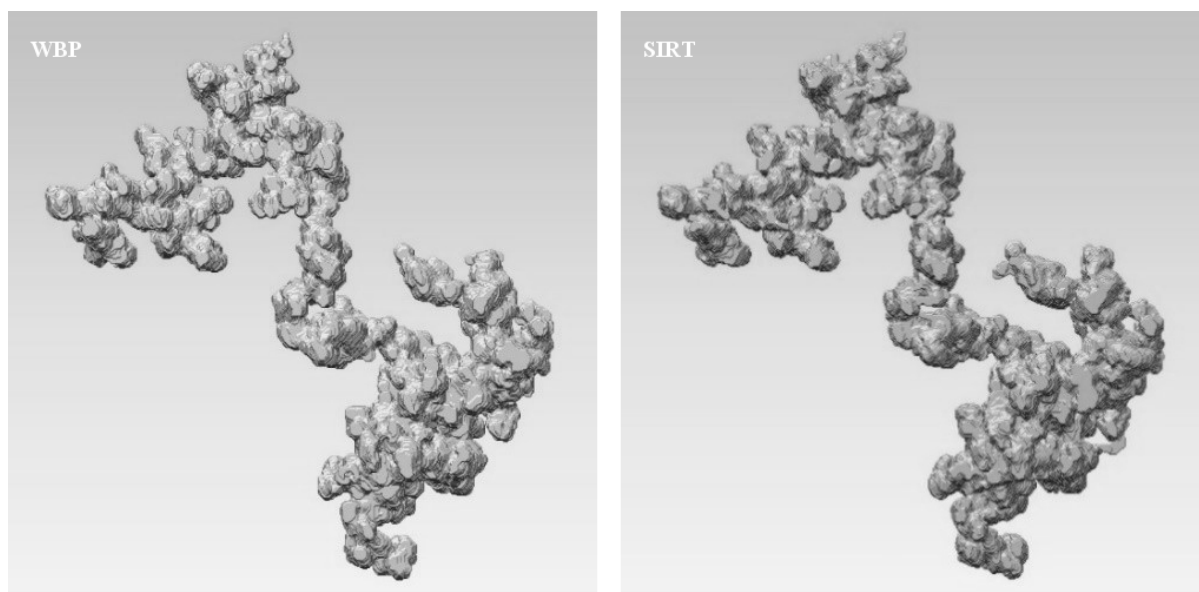


Figure-3: 3D models of FG soot particle visualised in UCSF Chimera. Left to right: WBP, SIRT

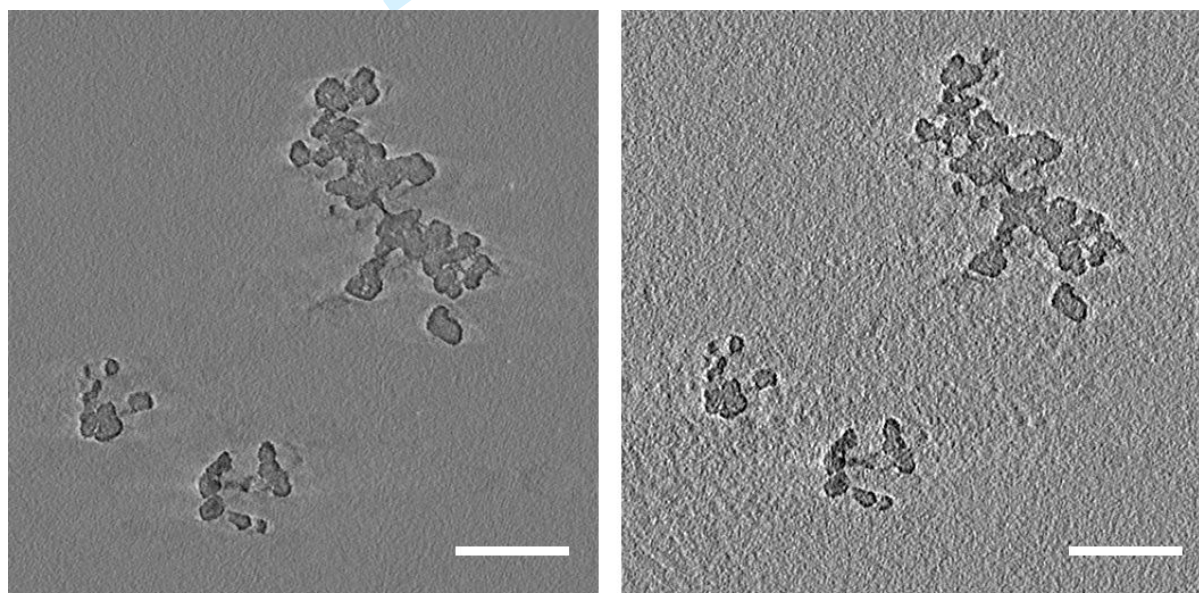


Figure-4: Comparative slices from FG-WBP-1 (left) and FG-WBP-5 (right) tomograms. Images are not post-processed.

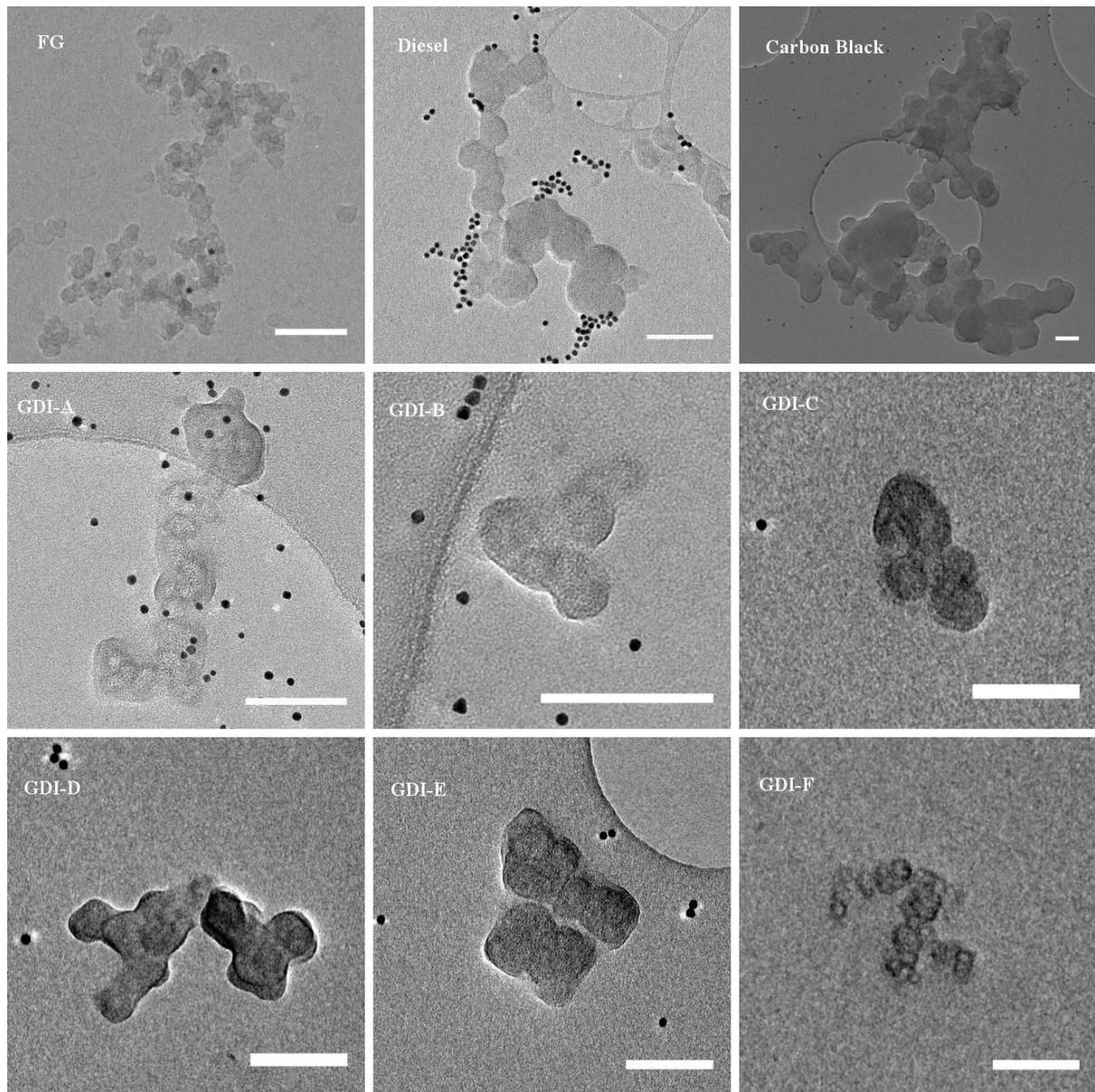


Figure-5: Untilted TEM images of the 9 soot particles studied in this section. Scale bar equal to 100 nm

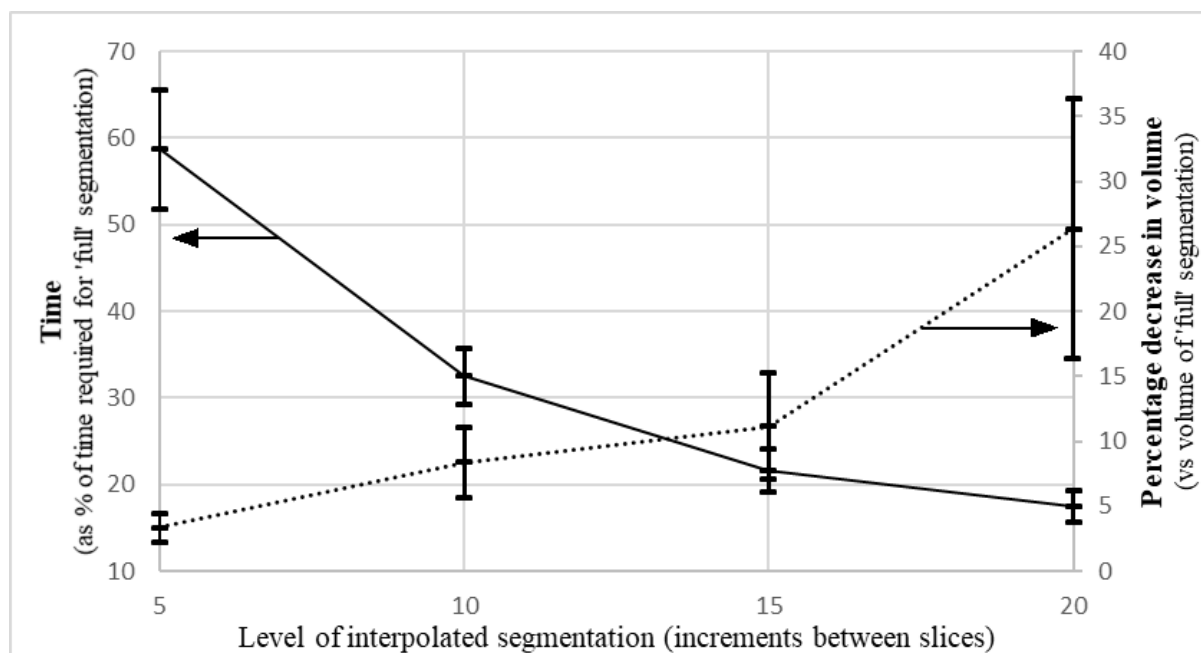


Figure-6: Average decreases in time taken for the various levels of interpolated segmentation, presented as % of time required for full manual segmentation (solid line, left y-axis). Also showing average decrease in particle volume for each level of interpolation, as a % of the volume of the fully manually segmented particle (dashed line, right y-axis). Error bars represent 95% confidence intervals

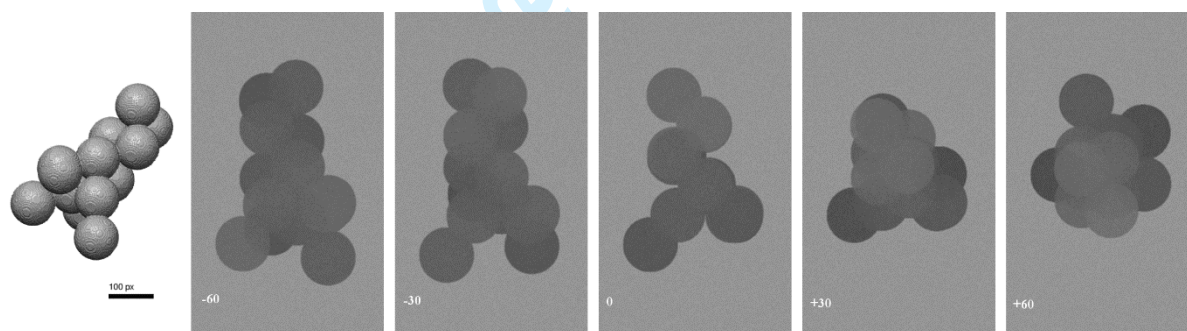


Figure-7: 3D rendering of synthetic particle 'random12', and TEM-style 2D projections from the simulated tilt series (tilt axis runs horizontally through the particle in the plane of the page)

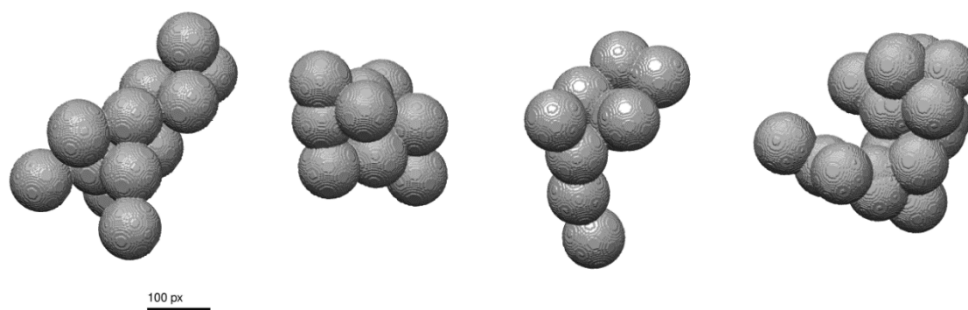


Figure-8: 3D renderings of particles (left to right): random12, random2, random5, random7. Generated using UCSF Chimera (Yang, Lasker et al. 2012)

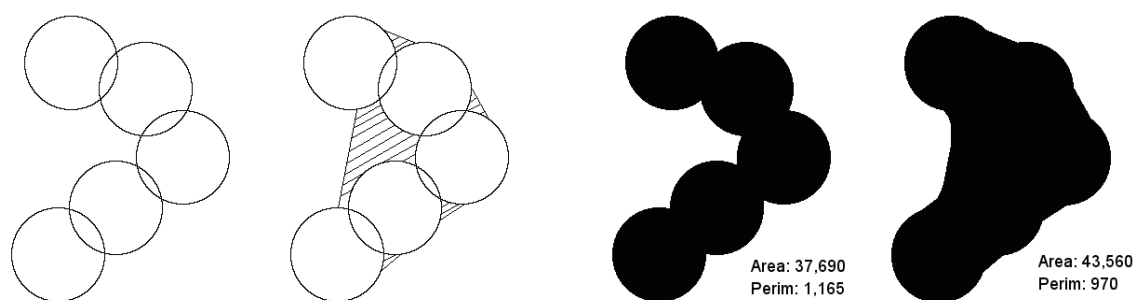


Figure-9: Side-on representative of structure formed from primary particle-style spheres, with areas prone to blurring highlighted. Area and perimeter values (in pixels) shown for perfect segmentation and blur-affected segmentation, showing increase in area (*cf.* Volume in 3D) and decrease in perimeter (*cf.* surface area in 3D)

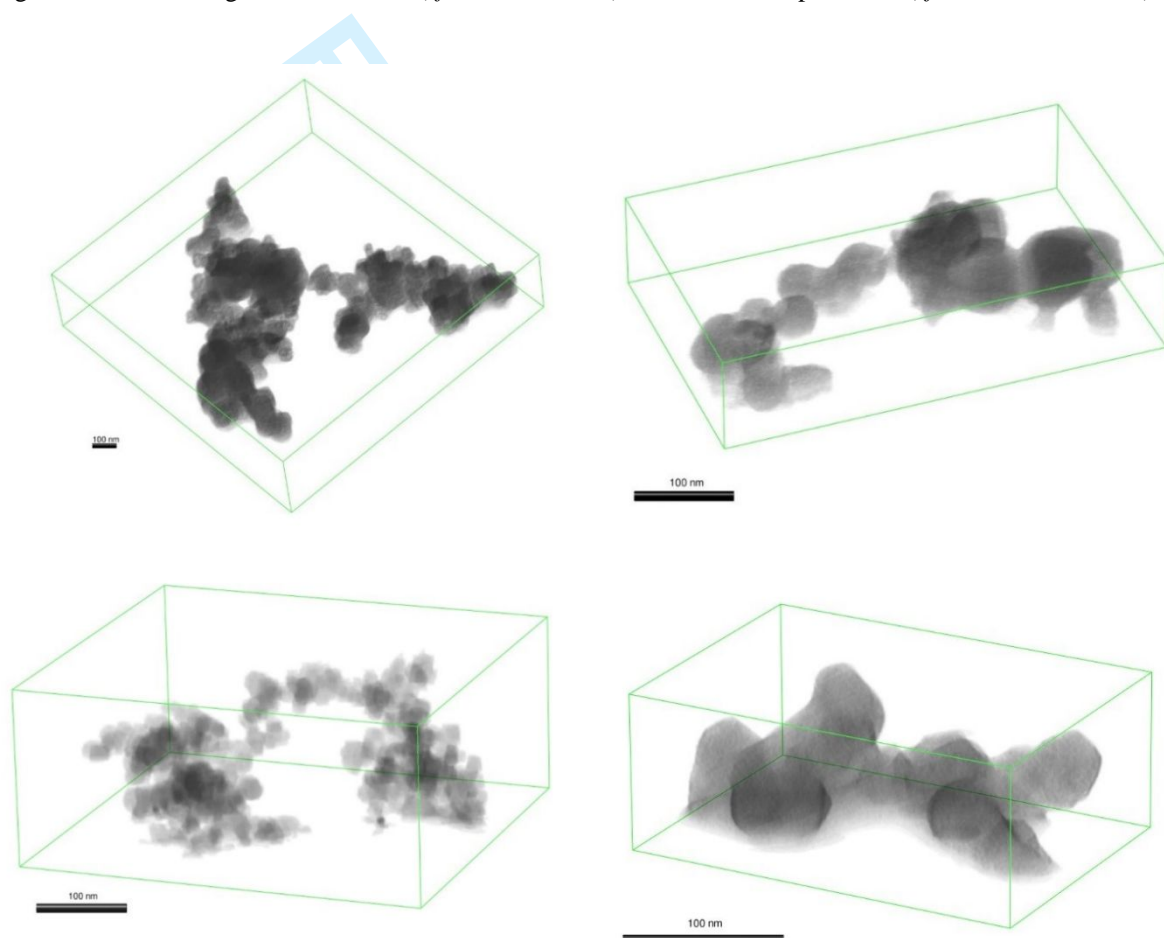


Figure-10: Examples of typical structures of flame-generated, carbon black, diesel soot-in-oil, and GDI soot-in-oil. In each image, the z-direction is perpendicular to the scale bar (vertical), as the particles are being viewed from the side on. GDI-D & Diesel soot structures are primarily just 1 primary particle thick in z-direction. Scale bar equal to 100nm in each image.