

LONDON
SCHOOL of
HYGIENE
& TROPICAL
MEDICINE



Bennett, A; Nagelkerke, N; Heinsbroek, E; Premkumar, PS; Wnk, M; Kang, G; French, N; Cunliffe, NA; Bar-Zeev, N; Lopman, B; Iturriza-Gomara, M (2017) Estimating the incidence of rotavirus infection in children from India and Malawi from serial anti-rotavirus IgA titres. PLoS One, 12 (12). e0190256. ISSN 1932-6203 DOI: <https://doi.org/10.1371/journal.pone.0190256>

Downloaded from: <http://researchonline.lshtm.ac.uk/4646058/>

DOI: [10.1371/journal.pone.0190256](https://doi.org/10.1371/journal.pone.0190256)

Usage Guidelines

Please refer to usage guidelines at <http://researchonline.lshtm.ac.uk/policies.html> or alternatively contact researchonline@lshtm.ac.uk.

Available under license: <http://creativecommons.org/licenses/by/2.5/>

RESEARCH ARTICLE

Estimating the incidence of rotavirus infection in children from India and Malawi from serial anti-rotavirus IgA titres

Aisleen Bennett^{1,2*}, Nico Nagelkerke¹, Ellen Heinsbroek², Prasanna S. Premkumar³, Małgorzata Wnęk², Gagandeep Kang³, Neil French^{1,2,4}, Nigel A. Cunliffe^{1,2}, Naor Bar-Zeev^{1,2}, Ben Lopman⁵, Miren Iturriza-Gomara^{1,2,6}

1 Malawi-Liverpool-Wellcome Trust Clinical Research Programme, College of Medicine, University of Malawi, Blantyre, Malawi, **2** Centre for Global Vaccine Research, Institute of Infection & Global Health, University of Liverpool, Liverpool, United Kingdom, **3** Division of Gastrointestinal Sciences, Christian Medical College, Vellore, India, **4** Malawi Epidemiology and Intervention Research Unit/London School of Hygiene & Tropical Medicine, Chilumba, Malawi, **5** Department of Epidemiology, Rollins School of Public Health, Emory University, Atlanta, United States of America, **6** NIHR Health Protection Research Unit in Gastrointestinal Infections, University of Liverpool, Liverpool, United Kingdom

✉ These authors contributed equally to this work.

* Aisleen.bennett@liv.ac.uk



OPEN ACCESS

Citation: Bennett A, Nagelkerke N, Heinsbroek E, Premkumar PS, Wnęk M, Kang G, et al. (2017) Estimating the incidence of rotavirus infection in children from India and Malawi from serial anti-rotavirus IgA titres. *PLoS ONE* 12(12): e0190256. <https://doi.org/10.1371/journal.pone.0190256>

Editor: Ravi Jhaveri, University of North Carolina at Chapel Hill School of Medicine, UNITED STATES

Received: August 17, 2017

Accepted: December 11, 2017

Published: December 29, 2017

Copyright: © 2017 Bennett et al. This is an open access article distributed under the terms of the [Creative Commons Attribution License](https://creativecommons.org/licenses/by/4.0/), which permits unrestricted use, distribution, and reproduction in any medium, provided the original author and source are credited.

Data Availability Statement: All relevant data are within the paper and its Supporting Information files.

Funding: This work was supported by the Wellcome Trust [grant numbers 063144 to GK, 091909/Z/10/Z to NAC and NF, 102466/Z/13/A to AB and the Karonga Prevention Study Core Award]. MI-G is supported by the NIHR Health Protection Research Unit in Gastrointestinal Infections at the University of Liverpool in partnership with Public Health England (PHE).

Abstract

Accurate estimates of rotavirus incidence in infants are crucial given disparities in rotavirus vaccine effectiveness from low-income settings. Sero-surveys are a pragmatic means of estimating incidence however serological data is prone to misclassification. This study used mixture models to estimate incidence of rotavirus infection from anti-rotavirus immunoglobulin A (IgA) titres in infants from Vellore, India, and Karonga, Malawi. IgA titres were measured using serum samples collected at 6 month intervals for 36 months from 373 infants from Vellore and 12 months from 66 infants from Karonga. Mixture models (two component Gaussian mixture distributions) were fit to the difference in titres between time points to estimate risk of sero-positivity and derive incidence estimates. A peak incidence of 1.05(95% confidence interval [CI]: 0.64, 1.64) infections per child-year was observed in the first 6 months of life in Vellore. This declined incrementally with each subsequent time interval. Contrastingly in Karonga incidence was greatest in the second 6 months of life (1.41 infections per child year [95% CI: 0.79, 2.29]). This study demonstrates that infants from Vellore experience peak rotavirus incidence earlier than those from Karonga. Identifying such differences in transmission patterns is important in informing vaccine strategy, particularly where vaccine effectiveness is modest.

Introduction

Prior to wide-spread rotavirus vaccination, rotavirus was responsible for over 450 000 deaths in young children, with 95% of these deaths occurring in low income, GAVI-the Vaccine Alliance (GAVI)-eligible countries[1]. Two live oral vaccines are currently globally licenced for the prevention of severe rotavirus gastroenteritis, a monovalent and a pentavalent formulation.

Competing interests: NB-Z and NF have received research grant support from GlaxoSmithKline Biologicals for work on rotavirus vaccines. MI-G has received research grant support from GlaxoSmithKline Biologicals and Sanofi Pasteur MSD for work on rotavirus. NAC has received research grant support and honoraria for participation in rotavirus vaccine advisory board meetings from GlaxoSmithKline Biologicals. All other authors declare no competing interests. This does not alter our adherence to PLOS ONE policies on data sharing and materials.

These vaccines are highly efficacious against severe disease in high and middle income countries (vaccine efficacy 85–100%) [2,3], but have proven much less protective in low income countries (LIC) (vaccine efficacy 49%–64%) [4–6]. The reasons for reduced vaccine efficacy in LIC are not fully understood but hypotheses include vaccine interaction with maternal antibody, micronutrient malnutrition, differences in gut microbiome, concomitant oral polio vaccination, and epidemiological differences such as greater force of infection (rate at which susceptible individuals acquire infection) [7] [8–12]. In view of the high rotavirus gastroenteritis morbidity and mortality, the World Health Organisation (WHO) has recommended routine rotavirus vaccination of infants in LIC and rotavirus vaccine has subsequently been introduced into more than 35 GAVI eligible countries [13]. Post-introduction reports of vaccine effectiveness from LIC have been encouraging (60–70%) [14–16], but remain low compared to high-income settings [17,18].

In the context of a high burden of rotavirus disease and reduced vaccine effectiveness in LIC, understanding patterns of exposure is important for public health policy such as vaccine schedules, and exploring potential epidemiological mechanisms for vaccine failure. Due to the high frequency of sub-clinical infections and transient faecal viral shedding, the true incidence of rotavirus infection is hard to estimate outside of large closely monitored cohort studies, which are logistically challenging and expensive to conduct. In this context, sero-surveys may represent a pragmatic alternative. Serum anti-rotavirus immunoglobulin A (IgA) develops in response to rotavirus infection, reflects intestinal IgA, which is thought to be key in long term protection against rotavirus, and has been shown to correlate well with protection against severe rotavirus disease [19–23]. Previously heterogeneities in sampling methods and laboratory protocols meant that comparison of IgA responses between populations was challenging. Recently however clinical vaccine trials have given rise to more standardised methods, facilitating comparisons of sero-response to vaccine and pre-vaccine exposure to rotavirus across settings [24,25]. To our knowledge this has not been utilised to compare incidence of rotavirus infection between populations although serological data has previously been used to evaluate prevalence and incidence of other pathogens including human papilloma virus and *Campylobacter* [26,27]. Interpretation of serological data can be complicated, however, by natural fluctuations and measurement errors that mask or mimic infection and traditional methods of analysis of serological data such as pre-defined cut-offs in levels and/or “fold increase” can be prone to misclassification [27,28].

This study used mixture models as an analytical approach to estimate incidence of rotavirus infection using serum anti-rotavirus IgA titres in two different low-income, unvaccinated populations: an urban setting in Vellore, Southern India, and a rural setting in Karonga, Northern Malawi. Our mixture models specify mixtures of two (“positive” and “negative”) component gaussian distributions, and may offer an advantage over more traditional methods of evaluating serological data as they evaluate data probabilistically. Models were used to describe patterns of exposure over the first 3 years of life in Vellore and to compare incidence rates between infants in Vellore and Karonga in order to increase understanding of force of rotavirus infection in young children from different LIC prior to rotavirus vaccine introduction.

Methods

Study population and sample collection

This study utilised serum samples collected from young children in two distinct locations; an urban slum setting in Vellore, Southern India; and Karonga, a rural setting in Northern Malawi. In Vellore, serum samples were collected from 373 children enrolled in a birth cohort designed to evaluate natural immunity to rotavirus infection. Data from this cohort were

collected between 2002 and 2006. Samples for serology were collected at 6 month intervals from birth and biweekly stool samples were collected for three years onwards. Stool samples were tested for rotavirus and rotavirus infection defined as positive on two enzyme-linked immunosorbent assay (ELISA) tests or reverse-transcriptase-polymerase-chain-reaction (RT-PCR). A detailed description of this cohort has been published[29]. In Karonga, serum samples were collected at 6, 26 and 52 weeks of life from 190 children born in the Karonga Health and Demographic Surveillance System between November 2008 and November 2010 [30]. These infants were enrolled as part of a birth cohort investigating pneumococcal carriage in Human Immunodeficiency Virus (HIV) exposed mothers and their infants, and approximately 28% of the infants were exposed to HIV[31]. A total of 112 of these 190 children had complete sets of three serum samples. Samples were selected for IgA analysis if they contained more than 100µl of serum, resulting in 198 samples from 66 children. Neither population had routine rotavirus vaccine introduced at the time of specimen collection. Anonymised serological data from Vellore and Karonga can be found in [S1 File](#) in the supplementary materials ([S1A and S1B File](#) respectively). Written consent for infant participation in each study was obtained from the responsible parent or guardian, and this process was approved by the respective ethics committees (Christian Medical College, Vellore and National Health Sciences Research Committee in Malawi).

Laboratory methods

Anti-rotavirus IgA antibodies were measured using a standard sandwich ELISA [32]. Methods, standards and controls used were the same in both sites, with the exception that Vellore used 2 x 10 fold dilution of sera while Karonga used 4 x 2 fold dilutions. Briefly, 96 well plates coated with rabbit anti-rotavirus hyperimmune serum were incubated with WC3 rotavirus containing cell culture lysate (MA104). Sera prepared in respective dilutions in blocking solution (1% blotto) were added to the plate. Anti-rotavirus IgA detection was performed using biotinylated rabbit anti-human IgA (Jackson ImmunoResearch Lab, USA) an avidin-biotin-peroxidase complex (Vecastain ABC kit; Vector) and a peroxidase substrate (o-Phenylenediaminedihydrochloride; Sigma) and H₂O₂ (Sigma). Rotavirus-specific IgA titres were quantitated against a standard curve (serial 2 fold dilution of control plasma calibrated against an international standard) and positive, negative and uninfected cell lysate controls were added to each plate.

Results were expressed as mean adjusted titres of at least two values per serum with a coefficient of variation < 20%. Positive samples in which the titres obtained in 2 or more dilutions had >20% coefficient of variation in two repeat tests were expressed using trimmed geometric means. Results which fell below the lower limit of quantification defined by the standard curve were defined as below the limit of detection and were recorded as zero. Results above the upper limit of detection were repeated with serial dilutions until a quantifiable result was obtained. Quantitative values for clinical test samples were expressed as IU/ ml IgA.

Statistical analysis

Analysis comprised 4 stages: i) descriptive analysis; ii) estimation of risk of seroconversion in the first 3 years of life in Vellore and thereby derivation of incidence; iii) comparison of risk and incidence estimates in Vellore and Karonga, and iv) calculation of antibody decay rate.

We compared independent and paired continuous variables using sign-rank and rank sum tests respectively, and chi-squared tests to compare independent proportions. For this analysis seroconversion was defined as titres ≥ 20 IU/ml[33].

The Vellore dataset was then used to investigate the pattern of rotavirus exposure in the first 3 years of life. Two component Gaussian mixture models, one component assumed to

correspond to uninfected individuals and one, with larger values, to seroconverted (presumed infected) individuals, were used to estimate the risk of seroconversion at 6 monthly time intervals, where the risk refers to the proportion (prevalence) of samples assigned to the positive or “infected” distribution [26,27]. Antibody titres were log transformed after adding one to the value of each titre to allow log transformation of zero values, and models were fit to the increment in log transformed titres between each of the time points (i.e. between 6 and 26 weeks [d1], 26 and 52 weeks [d2], 52 and 78 weeks [d3], 78 and 104 weeks [d4], 104 and 130 weeks [d5] and 130 and 156 weeks [d6]). There were large numbers of zero values (representing no change in antibody titre) for each time point. These did not fit a Gaussian distribution, and were therefore excluded from fitting the models. As these values clearly represented no evidence of re-infection, they were added back into the uninfected component for calculations of risk and incidence. Bootstrap confidence bounds were calculated.

Rotavirus infection incidence λ , during the interval τ between each time point was calculated based on the relationship between the risk and incidence rate using the formula below, where p corresponds to the bootstrap estimate of mean risk of sero-conversion [34]:

$$\lambda = \frac{-\ln(1 - p)}{\tau}$$

The same methods were then used to estimate the risk and incidence of seroconversion in Karonga between 6 and 26, 26 and 52 and 6 and 52 weeks of life in order to compare exposure to rotavirus infection in infancy between the Vellore and Karonga populations. The timing of the first sample differed between populations (6 weeks of age in Karonga vs birth in Vellore), however for the purposes of this analysis this baseline time point was assumed to be the same. For additional validation, and to investigate if the pattern of increment differed significantly between populations we calculated the difference between increments in each location by subtracting [d2] from [d1] and compared the mean value obtained between locations using a two-sample t-test.

To evaluate the use of mixture models, seroconversion was also calculated using two alternative standard definitions; fold increase and a pre-defined cut-off of anti-rotavirus IgA titres ≥ 20 IU. For calculation of fold increase 0.1 was added to each assay result (to allow calculation of fold increase for zero values), and seroconversion was defined as a three-fold or greater rise between time points. For the cut-off of ≥ 20 IU, sero-positivity was defined as IgA titres ≥ 20 IU and becoming seropositive between time points was considered seroconversion.

Finally, in order to evaluate the likelihood of capturing repeated infection episodes using mixture models, a decay rate was calculated for anti-rotavirus IgA using a subset of children from the Vellore dataset. 87 children were identified who had a stool or serologically confirmed rotavirus infection in the first 26 weeks of life, and no evidence of re-infection between 26 and 52 weeks. Antibody decay was calculated based on the log of the fold increase in titres between 26 and 52 weeks, where any value less than one indicates a decline in titre. Anonymised serological data used to estimate decay rate can be found in [S1 File](#) in the supplementary materials ([S1 File](#)).

Statistical analyses were conducted using Stata 12 (StataCorp, USA), GraphPad Prism 6 (GraphPad Software Inc, USA), and R 3.0.2 (R Foundation for Statistical Computing, Austria).

Results

Descriptive analysis

IgA titres rose incrementally in both Vellore and Karonga, with significant rises in median IgA titres between time points ([Fig 1](#)). The proportion of children with anti-rotavirus IgA titres

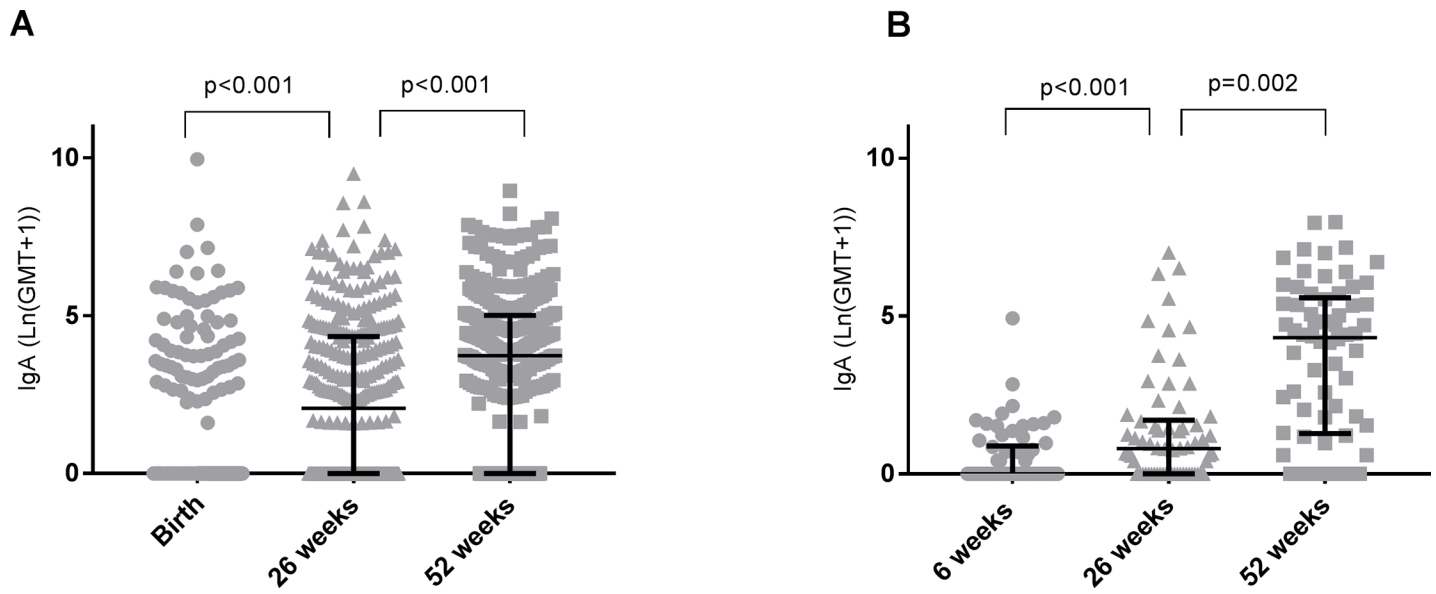


Fig 1. Increase in IgA titres over time in Vellore (A) and Karonga (B). Error bars represent median and IQR. P values represent sign-rank tests for paired medians.

<https://doi.org/10.1371/journal.pone.0190256.g001>

≥ 20 IU/ml was greater in Vellore than Karonga at 6 (15.43% vs 1.52%, chi-squared test $p = 0.002$) and 26 (37.78% vs 13.64%, chi-squared $p < 0.001$) weeks of life, but there was no significant difference between the two populations at 52 weeks of life (61.13% vs 60.61%, chi squared $p = 0.937$).

Patterns of rotavirus infection in first 3 years of life

Mixture models fit to the Vellore data set over 3 years showed an initial high frequency of rotavirus infection, with a risk of seroconversion of 0.41 (95% confidence interval [CI]: 0.27, 0.56) between birth and 6 months, which declined with each subsequent time interval (Fig 2 and Table 1).

Comparison of patterns of rotavirus infection in first year of life between Vellore and Karonga

Fitting mixture models to the Karonga dataset demonstrated that incidence of rotavirus infection varied by time and between the populations. Between 6 weeks and 26 weeks incidence of infection in Karonga was lower than observed in Vellore with 0.34 episodes/child year (95% CI: 0.08, 1.17) compared to 1.05 episodes/child year (95% CI: 0.64, 1.64) (Fig 3 and Table 1). In comparison, incidence was considerably higher in Karonga between 26 and 52 weeks than in Vellore (1.41 episodes/child year [95% CI 0.79, 2.29] vs 0.44 episodes/child year [95% CI: 0.17, 1.02]) (Fig 3 and Table 1). There was no clear difference between the two populations when incidence was calculated between 6 and 52 weeks (1.25 episodes per child year [95% CI 0.54, 2.28] in Karonga, versus 0.80 [95% CI: 0.65, 0.97] in Vellore).

The mean difference in titres ($[d_2] - [d_1]$) was significantly smaller in Vellore than Karonga (-0.35 in Vellore and 1.45 in Karonga, two sample t-test $p = 0.004$). This is likely due to the high risk of seroconversion in the first six months of life and subsequent lower relative increase in titres in the second six months of life in Vellore.

Overall, estimates of incidence using the mixture models were similar to the two alternative definitions of seroconversion (Table 2). The notable exception was for estimating incidence

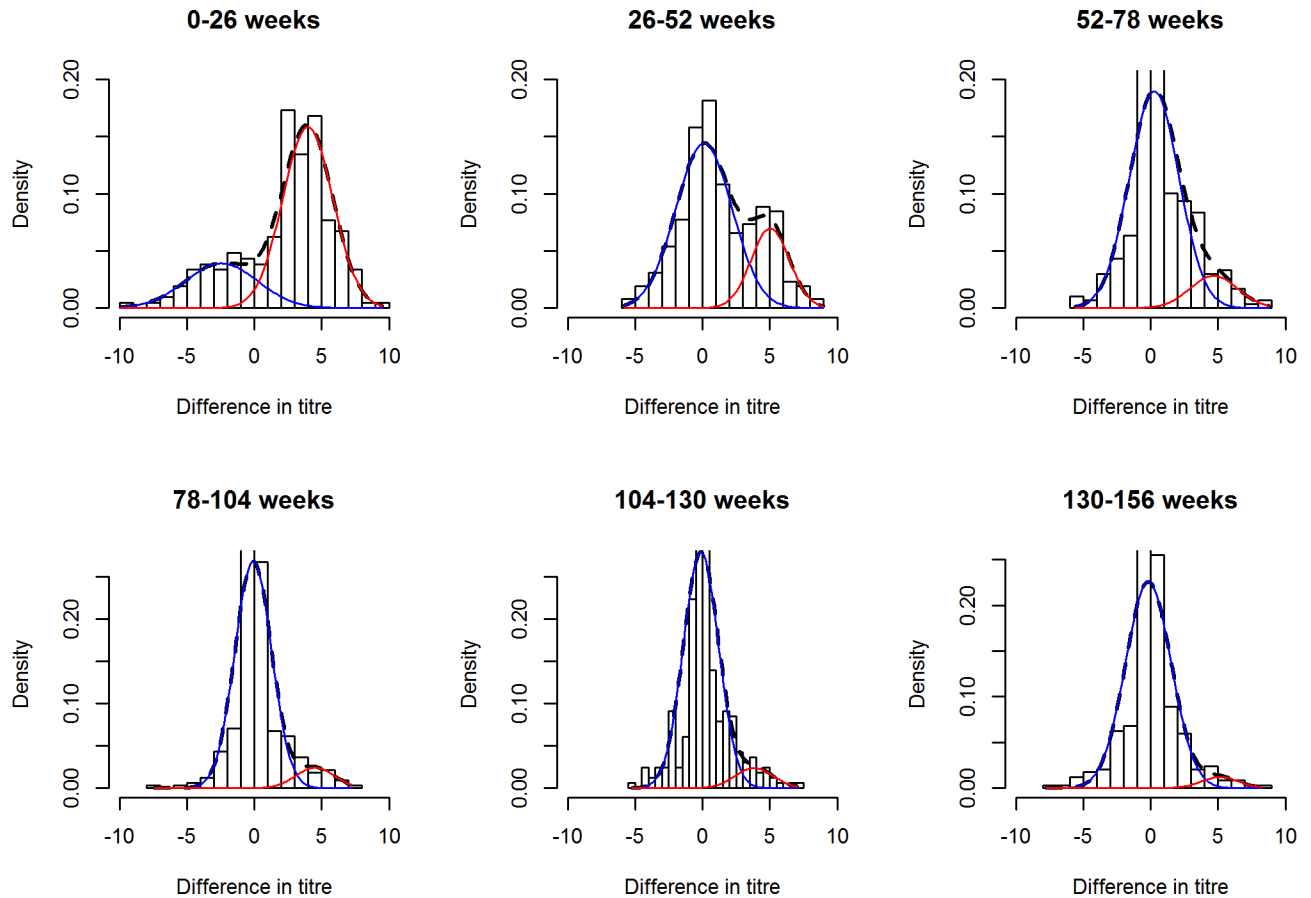


Fig 2. Output from mixture models showing positive (“infected”) and negative (“uninfected”) distributions for increment in log transformed anti-rotavirus IgA titres between 6 month time points in Vellore. The dashed line represents the (fitted) mixture distribution, the red line the constituent distribution for the “infected” and the blue line the constituent distribution for the “uninfected”. Bars represent values for difference between titres.

<https://doi.org/10.1371/journal.pone.0190256.g002>

between 6 and 26 weeks, when using fold increase resulted in a substantially higher estimate in Karonga (1.10 episodes/child year [95% CI: 0.74, 1.59]) than using mixture models or IgA titres ≥ 20 IU (0.34 episodes/child year [95%: CI 0.08, 1.17] and 0.29 episodes/child year [95% CI: 0.15, 0.56], respectively). Apart from this, all three methods showed higher incidence of infection in Vellore compared to Karonga in the first 6 months of life, and higher incidence in Karonga compared to Vellore between 26 and 52 weeks.

Anti-rotavirus IgA antibody decay

Based on the log of fold increase, anti-rotavirus IgA titres showed a relatively rapid decay with a mean fold increase of 0.09 fold/year, which is equivalent to a $> 10X$ reduction in antibody titres) following an initial infection (Fig 4).

Discussion

Identifying heterogeneities in infant rotavirus transmission patterns is important as force of infection may be a contributing factor to the reduced vaccine effectiveness observed in LIC, and understanding patterns of incidence may help inform vaccine scheduling and improve vaccine impact. This study demonstrates notable differences in force of infection between

Table 1. Parameter estimates from mixture models for rotavirus infection in Vellore and Karonga.

| | Mean 1* | SD* 1 | Mean 2 | SD 2 | Risk** | 95% CI | Incidence† | 95% CI |
|-----------------------------------|---------|-------|--------|------|--------|-----------|------------|------------|
| Vellore | | | | | | | | |
| 0–26 wks | -2.44 | 2.68 | 3.97 | 1.86 | 0.41 | 0.27,0.56 | 1.05 | 0.64, 1.64 |
| 26–52 wks | 0.11 | 2.08 | 5.02 | 1.42 | 0.20 | 0.08,0.40 | 0.44 | 0.17, 1.02 |
| 52–78 wks | 0.26 | 1.84 | 4.69 | 1.77 | 0.18 | 0.02,0.72 | 0.39 | 0.04, 2.57 |
| 78–104 wks | -0.08 | 1.36 | 4.52 | 1.43 | 0.13 | 0.02,0.54 | 0.29 | 0.04, 1.57 |
| 104–130wks | -0.12 | 1.31 | 3.84 | 1.41 | 0.11 | 0.02,0.47 | 0.24 | 0.04, 1.29 |
| 130–156 wks | -0.17 | 1.69 | 5.14 | 1.36 | 0.05 | 0.00,0.78 | 0.10 | 0.00, 3.04 |
| Karonga | | | | | | | | |
| 6–26 wks | 0.40 | 1.45 | 4.87 | 1.22 | 0.15 | 0.04,0.44 | 0.34 | 0.08, 1.17 |
| 26–52 wks | 0.08 | 1.31 | 4.48 | 1.35 | 0.50 | 0.33,0.68 | 1.41 | 0.79, 2.29 |
| Increment over first year of life | | | | | | | | |
| Vellore | | | | | | | | |
| 0–52 wks | -0.35 | 2.62 | 4.62 | 1.53 | 0.55 | 0.48,0.62 | 0.80 | 0.65, 0.97 |
| Karonga | | | | | | | | |
| 6–52 wks | -0.22 | 0.59 | 4.26 | 1.82 | 0.71 | 0.42,0.90 | 1.25 | 0.54, 2.28 |

Data from Vellore for 156 weeks, from Karonga for 52 weeks.

*Where mean 1 and SD1 refer to mean and standard deviation (SD) for distribution 1 (increment in log transformed titres for uninfected children), and mean 2 and SD2 to mean and standard deviation for distribution 2 (increment in log transformed titres for infected children).

**Mean risk of seroconversion and confidence intervals (CI) derived from bootstrap estimates

† Incidence rate of rotavirus infection derived from mean risk using formula stated previously. Incidence rate in episodes per child year.

<https://doi.org/10.1371/journal.pone.0190256.t001>

infants from Vellore, India, and Karonga, Malawi in the first year of life, with children in Vellore seemingly infected earlier in life than those in Karonga.

Although the confidence intervals for risk and incidence estimates are wide and overlap considerably, the validity of these findings are corroborated by the observation that the same patterns are seen when a pre-defined cut-off (≥ 20 IU) is used to define seroconversion, and that a significant difference is observed in mean titre increment from the first six to the second six months of life between populations. One explanation for the observed difference in exposure patterns is variation in population dynamics between the two study sites; Vellore is an urban slum environment with a population density of 17,000/km²[35] in contrast to the rural Karonga district, with a population density of approximately 264/km²[30]. In support of this, crowding has previously been associated with increased frequency of rotavirus infection[36], and a recent study from Dhaka, Bangladesh demonstrated that rotavirus incidence in the densely populated core of the city was 3 times greater than in the more sparsely populated periphery [37].

Using anti-rotavirus IgA titres to assess force of rotavirus infection is attractive, particularly as in recent years IgA titres in infants have been measured in a standardised manner across numerous different populations as part of vaccine efficacy trials, making comparisons between studies and sites easier and resulting in banks of data which could be utilised to understand global trends in population level rotavirus incidence[38]. Mixture models offer an advantage over traditional methods of defining seroconversion, as they provide a visual interpretation of the data, and evaluate infection probabilistically (i.e. the probability of each sample falling into the positive or negative distribution), and thus avoid the assumption of an, somewhat arbitrary, absolute cut off. Uncertainty around estimates can be evaluated using boot-strapping and expressed as confidence intervals. The ability to estimate rotavirus incidence with relative ease could increase understanding of differences in patterns of exposure between populations.

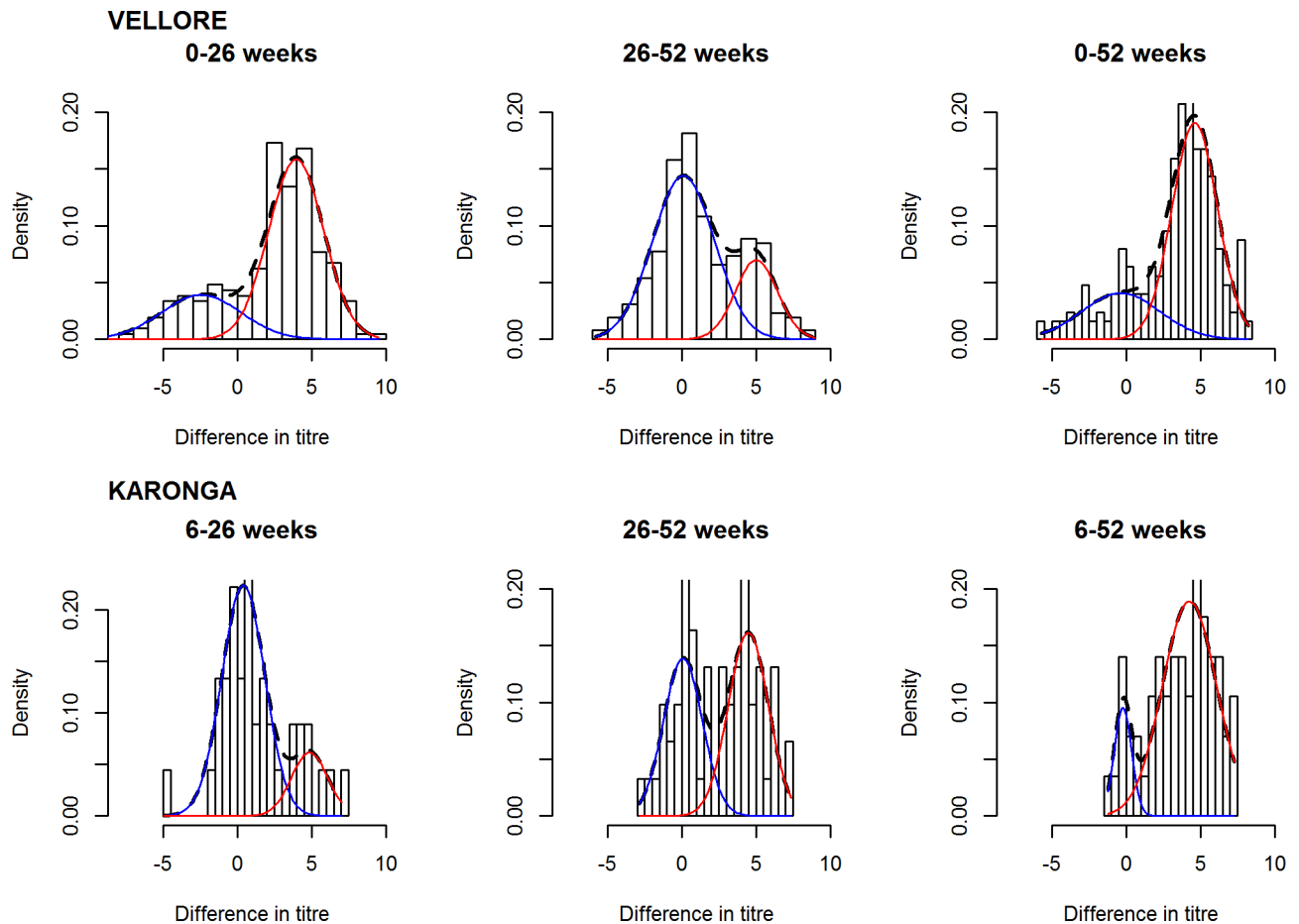


Fig 3. Output from mixture models showing positive (“infected”) and negative (“uninfected”) distributions for increment in log transformed anti-rotavirus IgA titres for the first year of life in Karonga and Vellore. The dashed line represents the (fitted) mixture distribution, the red line the constituent distribution for the “infected” and the blue line the constituent distribution for the “uninfected”.

<https://doi.org/10.1371/journal.pone.0190256.g003>

In this study, the risk of seroconversion identified using mixture models is reasonably consistent with that identified using the more traditional methods of a defined cut-off, or fold increase from baseline. The exception to this is risk of seroconversion defined by fold increase in the first six months of life in Karonga, which identified significantly more children as having seroconverted than either mixture models or a pre-defined cut-off. One explanation for this could be mathematical artefact due to the lower proportion of children who had IgA titres ≥ 20 IU at the time of first sample in Karonga[28].

Widespread introduction of rotavirus vaccination has had a substantial impact on the burden of diarrhoeal disease in children from the poorest countries[39–41]. With the success of programmatic vaccine introduction and encouraging but sub-optimal vaccine effectiveness reported from LIC it is important to target vaccine failure and residual rotavirus disease. High force of infection may lead to higher trans-placental maternal IgG and anti-rotavirus IgA titres in breast milk, both of which may impact on vaccine response in infants[42]. An additional dose of vaccine or delayed vaccine schedule such as recently trialled in Ghana may improve vaccine response in this instance[43]. Understanding the timing of peak rotavirus incidence may also inform decisions around optimal vaccine schedules; for example a high burden of very early disease such as observed in Vellore could lead to consideration of a neonatal dose of vaccine, such as the candidate vaccine RV3-BB, currently undergoing immunogenicity trials

Table 2. Risk of seroconversion and incidence of rotavirus infection between 0/6 and 26 weeks, 26 and 52 and 0/6 and 52 weeks for Vellore and Karonga using mixture models, fold increase and IgA titres > = 20IU.

| | | Mixture Model | | Fold Increase | | IgA titres > = 20IU | |
|-----------------------|----------|---------------|-------------|---------------|-------------|---------------------|-------------|
| | | Risk* | Incidence † | Risk | Incidence † | Risk | Incidence † |
| 0/6 weeks to 26 weeks | | | | | | | |
| Vellore | Estimate | 0.41 | 1.05 | 0.44 | 1.16 | 0.31 | 0.73 |
| | 95% CI | 0.27,0.56 | 0.64,1.64 | 0.39,0.49 | 0.98,1.36 | 0.26,0.36 | 0.60,0.88 |
| Karonga | Estimate | 0.15 | 0.34 | 0.42 | 1.10 | 0.14 | 0.29 |
| | 95% CI | 0.04,0.44 | 0.08,1.17 | 0.31,0.55 | 0.74,1.59 | 0.07,0.26 | 0.15,0.56 |
| 26 to 52 weeks | | | | | | | |
| Vellore | Estimate | 0.20 | 0.44 | 0.35 | 0.87 | 0.28 | 0.66 |
| | 95% CI | 0.08,0.40 | 0.17,1.02 | 0.30,0.41 | 0.73,1.04 | 0.24,0.33 | 0.54,0.80 |
| Karonga | Estimate | 0.50 | 1.41 | 0.61 | 1.86 | 0.50 | 1.39 |
| | 95% CI | 0.33,0.68 | 0.79,2.29 | 0.48,0.72 | 1.31,2.54 | 0.38,0.62 | 0.95,1.94 |
| 0/6 weeks to 52 weeks | | | | | | | |
| Vellore | Estimate | 0.55 | 0.80 | 0.60 | 0.91 | 0.50 | 0.70 |
| | 95% CI | 0.48–0.62 | 0.65–0.97 | 0.54–0.65 | 0.78–1.05 | 0.45–0.56 | 0.60–0.82 |
| Karonga | Estimate | 0.71 | 1.25 | 0.74 | 1.36 | 0.59 | 0.89 |
| | 95% CI | 0.42–0.90 | 0.54–2.28 | 0.62–0.84 | 0.97–1.80 | 0.47–0.71 | 0.63–1.22 |

*Mean risk and confidence intervals (CI) derived from bootstrap estimates

† Incidence rate derived from risk estimate using formula stated previously. Incidence rate in episodes per child year.

<https://doi.org/10.1371/journal.pone.0190256.t002>

[44]. The variation in transmission patterns between two different low income settings identified in this study suggests that different populations may require different approaches. It is intriguing that the model derived mean increment for Vellore in the first 6 months of life is a negative value. This is unlikely to reflect maternal antibody as this is usually IgG, which is not

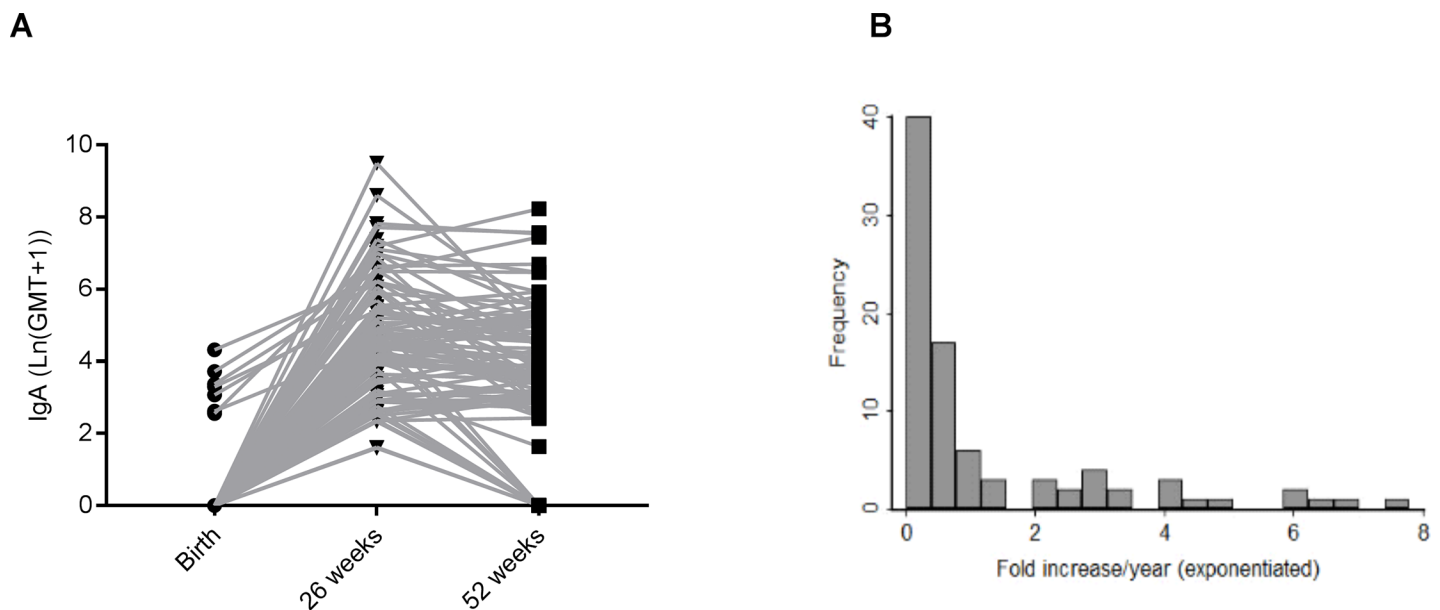


Fig 4. Anti-rotavirus IgA decay rates. A) Log transformed titres at 0, 26 and 52 weeks for 87 children included in IgA decay analysis. B) Fold increase in titres per year for the same children. Titres log transformed then exponentiated.

<https://doi.org/10.1371/journal.pone.0190256.g004>

measured by this study. One possibility could be a number of infants with neonatal infection and subsequent sero-response, which then declines substantially over the next 6 months.

Whilst serum IgA is possibly the best currently available marker of recent rotavirus infection, it is not a perfect correlate of protection against rotavirus[45]. Using serology alone to estimate rotavirus incidence will under-estimate the true burden; cohort studies from Vellore and Mexico collected stool and serum samples to estimate rotavirus incidence and in both approximately 25% of infections were identified in stool alone without a corresponding rise in antibody titres [29,46]. The degree of under-estimation seems unlikely to vary considerably across populations however, and broad patterns in rates of infection across should still be comparable. It is also possible that sero-response only captures first infection; that subsequent infections may not boost IgA levels sufficiently for re-infection to be captured. However the rapid decay in IgA titres (~10 fold per year) following an initial infection seen in this study argues against this.

This analysis of existing data included a small number of children, particularly from Karonga, which likely contributes to wide confidence bounds around risk and incidence estimates. Those children from Karonga included in the study are a relatively small proportion of available children (66/190, 35%). This was due to available volume of serum and reflects the challenges of obtaining blood samples from young children. While this will have contributed to the small sample size it is unlikely that children with larger sample volumes differ systematically from those with smaller sample volumes and should not affect the representative nature of the results. Timing of collection of the first serum sample differed by site, but there were very few infections identified in either cohort before the first sample therefore this is unlikely to have affected the comparison. Approximately 28% of infants from Karonga were HIV exposed, however as HIV infected infants have comparable IgA responses to those of HIV uninfected infants following rotavirus vaccine and rotavirus does not seem to be more frequent in HIV infected children[47–49], it seems unlikely that HIV exposure status should substantially influence IgA responses to natural rotavirus infection.

Conclusions

Fitting mixture models to anti-rotavirus serum IgA titres is an efficient and inexpensive quantitative method to estimate population incidence in young infants. Using these models we identified that infants in Vellore are infected with rotavirus at a younger age than those in Karonga. Identifying heterogeneities in transmission such as these may help increase understanding of mechanisms behind reduced vaccine effectiveness and inform vaccine scheduling to optimise protection for infants against rotavirus. This is crucial given the observed lower vaccine effectiveness and ongoing burden of disease in low income settings.

Supporting information

S1 File. Serological data for Karonga and Vellore. This consists of 3 datasets; S1A containing data IgA data from Vellore, S1B containing IgA data from Karonga, and S1C containing a subset of the Vellore data used to estimate IgA decay rate.

(ZIP)

Acknowledgments

Professor Peter Teunis provided valuable insights into this analysis. MI-G is supported by the NIHR Health Protection Research Unit in Gastrointestinal Infections at the University of Liverpool in partnership with Public Health England (PHE).

Disclaimer

The views expressed are those of the author(s) and not necessarily those of the NHS, the NIHR, the Department of Health or Public Health England.

Author Contributions

Conceptualization: Aisleen Bennett, Nico Nagelkerke, Ellen Heinsbroek, Prasanna S. Premkumar, Gagandeep Kang, Neil French, Nigel A. Cunliffe, Naor Bar-Zeev, Ben Lopman, Miren Iturriza-Gomara.

Data curation: Nico Nagelkerke, Ellen Heinsbroek, Prasanna S. Premkumar, Gagandeep Kang.

Formal analysis: Aisleen Bennett, Nico Nagelkerke, Ellen Heinsbroek, Naor Bar-Zeev, Ben Lopman.

Funding acquisition: Gagandeep Kang, Neil French, Nigel A. Cunliffe.

Investigation: Aisleen Bennett, Małgorzata Wnęk, Miren Iturriza-Gomara.

Methodology: Aisleen Bennett, Nico Nagelkerke, Prasanna S. Premkumar, Małgorzata Wnęk, Gagandeep Kang, Neil French, Nigel A. Cunliffe, Naor Bar-Zeev, Ben Lopman, Miren Iturriza-Gomara.

Supervision: Małgorzata Wnęk, Nigel A. Cunliffe, Ben Lopman, Miren Iturriza-Gomara.

Visualization: Ben Lopman.

Writing – original draft: Aisleen Bennett.

Writing – review & editing: Aisleen Bennett, Nico Nagelkerke, Ellen Heinsbroek, Prasanna S. Premkumar, Małgorzata Wnęk, Gagandeep Kang, Neil French, Nigel A. Cunliffe, Naor Bar-Zeev, Ben Lopman, Miren Iturriza-Gomara.

References

1. Tate JE, Burton AH, Boschi-Pinto C, Steele AD, Duque J, Parashar UD. 2008 estimate of worldwide rotavirus-associated mortality in children younger than 5 years before the introduction of universal rotavirus vaccination programmes: a systematic review and meta-analysis. *Lancet Infect Dis.* 2012; 12: 136–141. [https://doi.org/10.1016/S1473-3099\(11\)70253-5](https://doi.org/10.1016/S1473-3099(11)70253-5) PMID: 22030330
2. Ruiz-Palacios GM, Perez-Schael I, Velazquez FR, Abate H, Breuer T, Clemens SC, et al. Safety and efficacy of an attenuated vaccine against severe rotavirus gastroenteritis. *N Engl J Med.* 2006; 354: 11–22. <https://doi.org/10.1056/NEJMoa052434> PMID: 16394298
3. Vesikari T, Matson DO, Dennehy P, Van Damme P, Santosham M, Rodriguez Z, et al. Safety and efficacy of a pentavalent human-bovine (WC3) reassortant rotavirus vaccine. *N Engl J Med.* 2006; 354: 23–33. <https://doi.org/10.1056/NEJMoa052664> PMID: 16394299
4. Armah GE, Sow SO, Breiman RF, Dallas MJ, Tapia MD, Feikin DR, et al. Efficacy of pentavalent rotavirus vaccine against severe rotavirus gastroenteritis in infants in developing countries in sub-Saharan Africa: a randomised, double-blind, placebo-controlled trial. *Lancet.* 2010; 376: 606–614. [https://doi.org/10.1016/S0140-6736\(10\)60889-6](https://doi.org/10.1016/S0140-6736(10)60889-6) PMID: 20692030
5. Madhi SA, Cunliffe NA, Steele D, Witte D, Kirsten M, Louw C, et al. Effect of human rotavirus vaccine on severe diarrhea in African infants. *N Engl J Med.* 2010; 362: 289–298. <https://doi.org/10.1056/NEJMoa0904797> PMID: 20107214
6. Zaman K, Dang DA, Victor JC, Shin S, Yunus M, Dallas MJ, et al. Efficacy of pentavalent rotavirus vaccine against severe rotavirus gastroenteritis in infants in developing countries in Asia: a randomised, double-blind, placebo-controlled trial. *Lancet.* 2010; 376: 615–623. [https://doi.org/10.1016/S0140-6736\(10\)60755-6](https://doi.org/10.1016/S0140-6736(10)60755-6) PMID: 20692031
7. Vynnycky E, White RG. *An introduction to infectious disease modelling.* Oxford University Press; 2010.

8. Chan J, Nirwati H, Triasih R, Bogdanovic-Sakran N, Soenarto Y, Hakimi M, et al. Maternal antibodies to rotavirus: could they interfere with live rotavirus vaccines in developing countries? *Vaccine*. 2011; 29: 1242–1247. <https://doi.org/10.1016/j.vaccine.2010.11.087> PMID: 21147127
9. Appaiahgari MB, Glass R, Singh S, Taneja S, Rongsen-Chandola T, Bhandari N, et al. Transplacental rotavirus IgG interferes with immune response to live oral rotavirus vaccine ORV-116E in Indian infants. *Vaccine*. 2014; 32: 651–656. <https://doi.org/10.1016/j.vaccine.2013.12.017> PMID: 24374502
10. Patel M, Shane AL, Parashar UD, Jiang B, Gentsch JR, Glass RI. Oral rotavirus vaccines: how well will they work where they are needed most? *J Infect Dis*. 2009; 200 Suppl: S39–48. <https://doi.org/10.1086/605035> PMID: 19817613
11. Harris VC, Armah G, Fuentes S, Korpela KE, Parashar U, Victor JC, et al. Significant Correlation Between the Infant Gut Microbiome and Rotavirus Vaccine Response in Rural Ghana. *J Infect Dis*. 2017; 215: 34–41. <https://doi.org/10.1093/infdis/jiw518> PMID: 27803175
12. Gomes MGM, Gordon SB, Laloo DG. Clinical trials: The mathematics of falling vaccine efficacy with rising disease incidence. *Vaccine*. 2016; 34: 3007–9. <https://doi.org/10.1016/j.vaccine.2016.04.065> PMID: 27177948
13. Rotavirus vaccine support—Gavi, the Vaccine Alliance [Internet]. [cited 23 Feb 2017]. Available: <http://www.gavi.org/support/nvs/rotavirus/>
14. Bar-Zeev N, Kapanda L, Tate JE, Jere KC, Ituriza-Gomara M, Nakagomi O, et al. Effectiveness of a monovalent rotavirus vaccine in infants in Malawi after programmatic roll-out: an observational and case-control study. *Lancet Infect Dis*. 2015; 15: 422–428. [https://doi.org/10.1016/S1473-3099\(14\)71060-6](https://doi.org/10.1016/S1473-3099(14)71060-6) PMID: 25638521
15. Tate JE, Ngabo F, Donnen P, Gatera M, Uwimana J, Rugambwa C, et al. Effectiveness of Pentavalent Rotavirus Vaccine under Conditions of Routine Use in Rwanda. *Clin Infect Dis*. 2016; 62: S208–S212. <https://doi.org/10.1093/cid/civ1016> PMID: 27059358
16. Armah G, Pringle K, Enweronu-Laryea CC, Ansong D, Mwenda JM, Diamenu SK, et al. Impact and Effectiveness of Monovalent Rotavirus Vaccine Against Severe Rotavirus Diarrhea in Ghana. *Clin Infect Dis*. 2016; 62: S200–S207. <https://doi.org/10.1093/cid/ciw014> PMID: 27059357
17. Lopman BA, Payne DC, Tate JE, Patel MM, Cortese MM, Parashar UD. Post-licensure experience with rotavirus vaccination in high and middle income countries; 2006 to 2011. *Curr Opin Virol*. 2012; 2: 434–442. <https://doi.org/10.1016/j.coviro.2012.05.002> PMID: 22749491
18. Tate JE, Cortese MM, Payne DC, Curns AT, Yen C, Esposito DH, et al. Uptake, impact, and effectiveness of rotavirus vaccination in the United States: review of the first 3 years of postlicensure data. *Pediatr Infect Dis J*. 2011; 30: S56–60. <https://doi.org/10.1097/INF.0b013e3181fefdc0> PMID: 21183842
19. Velazquez FR, Matson DO, Guerrero ML, Shults J, Calva JJ, Morrow AL, et al. Serum antibody as a marker of protection against natural rotavirus infection and disease. *J Infect Dis*. 2000; 182: 1602–1609. <https://doi.org/10.1086/317619> PMID: 11069230
20. Hjelt K, Grauballe PC, Andersen L, Schiøtz PO, Howitz P, Krasilnikoff PA. Antibody response in serum and intestine in children up to six months after a naturally acquired rotavirus gastroenteritis. *J Pediatr Gastroenterol Nutr*. 1986; 5: 74–80. PMID: 3944746
21. Hjelt K, Grauballe PC, Paerregaard A, Nielsen OH, Krasilnikoff PA. Protective effect of preexisting rotavirus-specific immunoglobulin A against naturally acquired rotavirus infection in children. *J Med Virol*. 1987; 21: 39–47. PMID: 3025356
22. Cox MJ, Azevedo RS, Nokes DJ, Beards GM, McCrae MA, Massad E, et al. Seroepidemiology of group A rotavirus in suburban Sao Paulo, Brazil. *Epidemiol Infect*. 1998; 120: 327–334. PMID: 9692612
23. Jiang B, Gentsch JR, Glass RI. The role of serum antibodies in the protection against rotavirus disease: an overview. *Clin Infect Dis*. 2002; 34: 1351–1361. <https://doi.org/10.1086/340103> PMID: 11981731
24. Patel M, Glass RI, Jiang B, Santosham M, Lopman B, Parashar U. A systematic review of anti-rotavirus serum IgA antibody titer as a potential correlate of rotavirus vaccine efficacy. *J Infect Dis*. 2013; 208: 284–294. <https://doi.org/10.1093/infdis/jit166> PMID: 23596320
25. Cunliffe N, Zaman K, Rodrigo C, Debrus S, Benninghoff B, Pemmaraju Venkata S, et al. Early exposure of infants to natural rotavirus infection: a review of studies with human rotavirus vaccine RIX4414. *BMC Pediatr*. 2014; 14: 295. <https://doi.org/10.1186/s12887-014-0295-2> PMID: 25433534
26. Teunis P, Eijkeren J, Ang C, Duynhoven Y, Simonsen J, Strid M, et al. Biomarker dynamics: estimating infection rates from serological data. *Stat Med*. 2012; 31: 2240–2248. <https://doi.org/10.1002/sim.5322> PMID: 22419564
27. Vink M, van de Kasstele J, Wallinga J, Teunis P, Bogaards J. Estimating Seroprevalence of Human Papillomavirus Type 16 Using a Mixture Model with Smoothed Age-dependent Mixing Proportions. *Epidemiology*. 2015; 26: 8–16. <https://doi.org/10.1097/EDE.000000000000196> PMID: 25380503

28. Beyer WE., Palache A, Lüchters G, Nauta J, Osterhaus ADM. Seroprotection rate, mean fold increase, seroconversion rate: which parameter adequately expresses seroresponse to influenza vaccination? *Virus Res.* 2004; 103: 125–132. <https://doi.org/10.1016/j.virusres.2004.02.024> PMID: 15163500
29. Gladstone BP, Ramani S, Mukhopadhyaya I, Muliylil J, Sarkar R, Rehman AM, et al. Protective effect of natural rotavirus infection in an Indian birth cohort. *N Engl J Med.* 2011; 365: 337–346. <https://doi.org/10.1056/NEJMoa1006261> PMID: 21793745
30. Crampin AC, Dube A, Mboma S, Price A, Chihana M, Jahn A, et al. Profile: the Karonga Health and Demographic Surveillance System. *Int J Epidemiol.* 2012; 41: 676–685. <https://doi.org/10.1093/ije/dys088> PMID: 22729235
31. Heinsbroek E, Tafatatha T, Chisambo C, Phiri A, Mwiba O, Ngwira B, et al. Pneumococcal Acquisition Among Infants Exposed to HIV in Rural Malawi: A Longitudinal Household Study. *Am J Epidemiol.* 2016; 183: 70–78. <https://doi.org/10.1093/aje/kwv134> PMID: 26628514
32. Bernstein DI, Smith VE, Sherwood JR, Schiff GM, Sander DS, DeFeudis D, et al. Safety and immunogenicity of live, attenuated human rotavirus vaccine 89–12. *Vaccine.* 1998; 16: 381–387. PMID: 9607059
33. Bernstein DI, Sack DA, Rothstein E, Reisinger K, Smith VE, O’Sullivan D, et al. Efficacy of live, attenuated, human rotavirus vaccine 89–12 in infants: a randomised placebo-controlled trial. *Lancet.* 1999; 354: 287–290. [https://doi.org/10.1016/S0140-6736\(98\)12106-2](https://doi.org/10.1016/S0140-6736(98)12106-2) PMID: 10440305
34. Muench H. *Catalytic Models in Epidemiology.* Harvard University Press; 1958.
35. Gladstone BP, Muliylil JP, Jaffar S, Wheeler JG, Le Fevre A, Iturriza-Gomara M, et al. Infant morbidity in an Indian slum birth cohort. *Arch Dis Child.* 2008; 93: 479–484. <https://doi.org/10.1136/adc.2006.114546> PMID: 17916587
36. Henry FJ, Bartholomew RK. Epidemiology and transmission of rotavirus infections and diarrhoea in St. Lucia, West Indies. *West Indian Med J.* 1990; 39: 205–212. PMID: 2082564
37. Martinez PP, King AA, Yunus M, Faruque ASG, Pascual M. Differential and enhanced response to climate forcing in diarrheal disease due to rotavirus across a megacity of the developing world. *Proc Natl Acad Sci U S A.* 2016; 113. <https://doi.org/10.1073/pnas.1618558114>
38. Patel M, Glass RI, Jiang B, Santosham M, Lopman B, Parashar U. A systematic review of anti-rotavirus serum IgA antibody titer as a potential correlate of rotavirus vaccine efficacy. *J Infect Dis.* 2013; 208: 284–294. <https://doi.org/10.1093/infdis/jit166> PMID: 23596320
39. Bar-Zeev N, Jere KC, Bennett A, Pollock L, Tate JE, Nakagomi O, et al. Population Impact and Effectiveness of Monovalent Rotavirus Vaccination in Urban Malawian Children 3 Years after Vaccine Introduction: Ecological and Case-Control Analyses. *Clin Infect Dis.* 2016; 62: S213–S219. <https://doi.org/10.1093/cid/civ1183> PMID: 27059359
40. Ngabo F, Tate JE, Gatera M, Rugambwa C, Donnen P, Lepage P, et al. Effect of pentavalent rotavirus vaccine introduction on hospital admissions for diarrhoea and rotavirus in children in Rwanda: A time-series analysis. *Lancet Glob Heal.* 2016; 4: e129–e136.
41. Mpabalwani EM, Simwaka CJ, Mwenda JM, Mubanga CP, Monze M, Matapo B, et al. Impact of Rotavirus Vaccination on Diarrheal Hospitalizations in Children Aged less than 5 Years in Lusaka, Zambia. *Clin Infect Dis.* 2016; 62: S183–S187. <https://doi.org/10.1093/cid/civ1027> PMID: 27059354
42. Moon S- S, Groome MJ, Velasquez DE, Parashar UD, Jones S, Koen A, et al. Prevacination Rotavirus Serum IgG and IgA Are Associated With Lower Immunogenicity of Live, Oral Human Rotavirus Vaccine in South African Infants. *Clin Infect Dis.* 2016; 62: 157–165. <https://doi.org/10.1093/cid/civ828> PMID: 26400993
43. Armah G, Lewis KDC, Cortese MM, Parashar UD, Anshah A, Gazley L, et al. A Randomized, Controlled Trial of the Impact of Alternative Dosing Schedules on the Immune Response to Human Rotavirus Vaccine in Rural Ghanaian Infants. *J Infect Dis.* 2016; 213: 1678–1685. <https://doi.org/10.1093/infdis/jiw023> PMID: 26823335
44. Bines JE, Danchin M, Jackson P, Handley A, Watts E, Lee KJ, et al. Safety and immunogenicity of RV3-BB human neonatal rotavirus vaccine administered at birth or in infancy: a randomised, double-blind, placebo-controlled trial. *Lancet Infect Dis.* 2015; 15: 1389–1397. [https://doi.org/10.1016/S1473-3099\(15\)00227-3](https://doi.org/10.1016/S1473-3099(15)00227-3) PMID: 26318715
45. Angel J, Franco MA, Greenberg HB. Rotavirus immune responses and correlates of protection. *Curr Opin Virol.* 2012; 2: 419–425. <https://doi.org/10.1016/j.coviro.2012.05.003> PMID: 22677178
46. Velazquez FR, Matson DO, Calva JJ, Guerrero L, Morrow AL, Carter-Campbell S, et al. Rotavirus infections in infants as protection against subsequent infections. *N Engl J Med.* 1996; 335: 1022–1028. <https://doi.org/10.1056/NEJM199610033351404> PMID: 8793926
47. Steele AD, Cunliffe N, Tumbo J, Madhi SA, De Vos B, Bouckennooghe A. A review of rotavirus infection in and vaccination of human immunodeficiency virus-infected children. *J Infect Dis.* 2009; 200 Suppl: S57–62. <https://doi.org/10.1086/605027> PMID: 19817615

48. Steele AD, Madhi SA, Louw CE, Bos P, Tumbo JM, Werner CM, et al. Safety, Reactogenicity, and Immunogenicity of Human Rotavirus Vaccine RIX4414 in Human Immunodeficiency Virus-positive Infants in South Africa. *Pediatr Infect Dis J*. 2011; 30: 125–30. <https://doi.org/10.1097/INF.0b013e3181f42db9> PMID: [20842070](https://pubmed.ncbi.nlm.nih.gov/20842070/)
49. Cunliffe NA, Gondwe JS, Kirkwood CD, Graham SM, Nhlane NM, Thindwa BD, et al. Effect of concomitant HIV infection on presentation and outcome of rotavirus gastroenteritis in Malawian children. *Lancet*. 2001; 358: 550–555. PMID: [11520526](https://pubmed.ncbi.nlm.nih.gov/11520526/)