

Parenchymal and vascular A β -deposition and its effects on the degeneration of neurons and cognition in Alzheimer's disease

Dietmar Rudolf Thal^{a, *}, W. Sue T. Griffin^b, Heiko Braak^c

^a Institute of Pathology – Laboratory of Neuropathology, University of Ulm, Ulm, Germany

^b Donald W. Reynolds Center on Aging, UAMS, Geriatric Research Education and Clinical Center, Veterans' Affairs Medical Center, Little Rock, AR, USA

^c Institute for Clinical Neuroanatomy, J. W. Goethe University, Frankfurt am Main, Germany

Received: April 29, 2008; Accepted: June 20, 2008

- Introduction
- The deposition of A β
- Neurotoxicity of A β
- Contribution of CAA to the degeneration of neurons
- Clinical impact of A β and its therapeutic possibilities
- Conclusions

Abstract

The deposition of the amyloid β -protein (A β) is one of the pathological hallmarks of Alzheimer's disease (AD). A β -deposits show the morphology of senile plaques and cerebral amyloid angiopathy (CAA). Senile plaques and vascular A β -deposits occur first in neocortical areas. Then, they expand hierarchically into further brain regions. The distribution of A β plaques throughout the entire brain, thereby, correlates with the clinical status of the patients. Imaging techniques for A β make use of the hierarchical distribution of A β to distinguish AD patients from non-AD patients. However, pathology seen in AD patients represents a late stage of a pathological process starting 10–30 years earlier in cognitively normal individuals. In addition to the fibrillar amyloid of senile plaques, oligomeric and monomeric A β is found in the brain. Recent studies revealed that oligomeric A β is presumably the most toxic A β -aggregate, which interacts with glutamatergic synapses. In doing so, dendrites are presumed to be the primary target for A β -toxicity. In addition, vascular A β -deposits can lead to capillary occlusion and blood flow disturbances presumably contributing to the alteration of neurons in addition to the direct neurotoxic effects of A β . All these findings point to an important role of A β and its aggregates in the neurodegenerative process of AD. Since there is already significant neuron loss in AD patients, treatment strategies aimed at reducing the amyloid load will presumably not cure the symptoms of dementia but they may stop disease progression. Therefore, it seems to be necessary to protect the brain from A β -toxicity already in stages of the disease with minor neuron loss before the onset of cognitive symptoms.

Keywords: amyloid β -protein • Alzheimer • amyloid plaques • cerebral amyloid angiopathy • dendritic degeneration

Introduction

Alzheimer's disease (AD) is a slowly progressing neurodegenerative disease that leads to dementia [1]. Pathologically, neuron loss and synapse loss occur and provide a neuropathological correlate for dementia [2–4]. The histopathological hallmarks that characterize AD are senile plaques, neurofibrillary tangles (NFTs) and neuropil threads (NTs) [1, 5, 6] (Fig. 1).

NFTs and NTs consist of abnormally phosphorylated τ -protein that aggregates to paired-helical filaments forming neurofibrillary

material [7–10]. These aggregates occur in the soma of nerve cells (NFTs) as well as in neurites (NTs) [1, 7, 8] (Fig. 1). Tangle-bearing neurons degenerate during a number of years resulting in neuronal death [8, 11, 12]. The first step in this process is the occurrence of abnormally phosphorylated τ -protein in the cell soma of nerve cells before aggregation and tangle formation [8]. 'Tombstone'-tangles are NFTs remaining in the neuropil after neuronal death [5].

*Correspondence to: Dietmar R. THAL, M.D.,
Institute of Pathology – Laboratory of Neuropathology,
University of Ulm, Albert Einstein Allee 11, D-89081 Ulm, Germany.

Tel.: +49+8221-962163
Fax: +49+8221-9628158
E-mail: Dietmar.Thal@uni-ulm.de

Senile plaques (synonymous with amyloid plaques), on the other hand, are extracellular deposits of amyloid-material in the neuropil [1, 5]. This amyloid material consists of fibrillar aggregates of amyloid β -protein ($A\beta$) (Fig. 1) [13]. $A\beta$ is a 39–43 amino acid protein, which is derived from the amyloid precursor protein (APP) by β - and γ -secretase cleavage (Fig. 2A) [14].

Cerebral amyloid angiopathy (CAA), *i.e.* the deposition of $A\beta$ in cerebral blood vessels, is frequently found in AD. Vascular amyloid deposits are most frequently found in leptomeningeal and cortical vessels (Fig. 1H and I) [15, 16].

This review focuses on the role of parenchymal and vascular $A\beta$ -deposition for the degeneration of neurons in the AD patient as well as in mouse models.

The deposition of $A\beta$

The deposition of $A\beta$ in the human brain starts in the neocortex and then expands hierarchically into further brain regions representing different phases of $A\beta$ -deposition (Fig. 2B, Table 1) [17–19]. These phases of $A\beta$ -deposition correlate with the expansion of neurofibrillary changes as represented by the Braak stages (Fig. 2B) [17, 18]. More importantly, the expansion of $A\beta$ -deposition into further brain regions also correlates well with the degree of dementia given by the CDR-score similar to that of neurofibrillary tangles as represented by the Braak-stage (Fig. 3A and B) [17]. A similar hierarchical expansion of vascular $A\beta$ -deposition was found [20]. Three stages of CAA can be distinguished (Fig. 2B, Table 1) and correlate with the phases of $A\beta$ -plaque-deposition and the degree of dementia (Fig. 3C) [20].

Since there is a good correlation between the expansion of $A\beta$ -deposition in the brain and dementia it is obvious that the overall distribution of $A\beta$, including diencephalic, brain stem and cerebellar regions, is related to the development of dementia [17, 21, 22]. The amount of $A\beta$ -deposition in a given cortical or hippocampal region, *i.e.* the $A\beta$ -load or semiquantitative plaque scores obtained in these regions, does not show significant differences among different degrees of dementia [23–26], between control cases with high amounts of AD-related pathology and AD cases [27–31] and among the levels of brain atrophy [32]. However, when comparing all non-demented cases with AD patients in a sample of 177 elderly autopsy cases between 20 and 99 years of age a significant difference in the $A\beta$ -load was observed (Fig. 3D).

The deposition of $A\beta$ in different areas of the brain results in the development of different types of $A\beta$ -deposits, which can be summarized as amyloid plaques or senile plaques (for review see: [5, 33, 34]). In spite of region-specific plaque-types the most important distinction is made between neuritic and non-neuritic plaques. According to the Consensus criteria of the National Institute on Aging, and Reagan Institute Working Group on Diagnostic Criteria for the Neuropathological Assessment of Alzheimer's Disease neuritic plaques are those which exhibit $A\beta$ -deposits in association with dystrophic neurites containing

argyrophilic or thioflavin S-positive aggregates, *i.e.* τ -aggregates [35, 36]. Other authors also include plaques exhibiting APP-positive dystrophic neurites negative for τ into the group of neuritic plaques [34, 37]. To allow a distinction between these different types of neuritic plaques with only one being relevant for the diagnosis of AD [35] it has been suggested to distinguish APP-type neuritic plaques without τ -aggregates from PHF-type neuritic plaques [33, 38, 39]. In addition to these morphological variations the biochemical composition varies among different plaque types as well [40–44].

All types of $A\beta$ -deposits are seen in demented as well as in non-demented patients [18]. For example, diffuse plaque types are the first to be deposited in the neocortex of non-demented individuals [18, 19, 40, 42, 45, 46]. They also occur in a similar pattern within the cerebellum and the brain stem when these regions become newly involved in AD cases [17, 47]. Thus, all types $A\beta$ -deposits presumably represent AD-related $A\beta$ -deposition and do not represent morphological alterations restricted to normal aging. Arguments favouring this hypothesis are: 1) there are cases even in very high ages who have not developed $A\beta$ -pathology [48] (Fig. 4A); 2) mouse models overexpressing only APP show a similar sequence of $A\beta$ -deposition as human beings indicating that the sequence of $A\beta$ -deposition described in the human brain represents the course of $A\beta$ -deposition starting with the first cortical plaques in non-demented individuals and coming to an end with the full-blown pattern of $A\beta$ -deposition in AD cases [33, 49] (Fig. 2); and 3) advanced $A\beta$ -deposition was related to a reduction of neuronal connectivity in the human brain [50] as well as in animal models [51, 52].

The current criteria for the diagnosis of AD define AD as dementia associated with mid – late stage NFT and neuritic plaque pathology [35]. In these stages, significant neuronal and synaptic loss is seen as well [4, 53].

APP-presenilin 1 double transgenic mouse models do not show a similar pattern of $A\beta$ -deposition as seen in the human brain or in APP single transgenic mice [54]. The co-expression of presenilin 1 under control of a HMG-CoA-promoter may explain the differences reported in the pattern of $A\beta$ -deposition in these mice in comparison to the human brain and to mice overexpressing only APP driven by a Thy-1 promoter [33, 54].

Neurotoxicity of $A\beta$

Synaptic and neuron loss are features of the pathological picture in AD cases [2–4]. The use of animal models overexpressing APP leading to the deposition of $A\beta$ allowed the confirmation of synaptic loss as a potential result from $A\beta$ -aggregation [55]. Neuron loss has only been observed in one APP-transgenic mouse model whereas others did not exhibit this pathology [49, 56]. APP-presenilin 1-double transgenic mice showed similar neuron loss [57]. However, mutant presenilin 1 is not only responsible for $A\beta$ -production but also involved in other neuronal cell death mechanisms

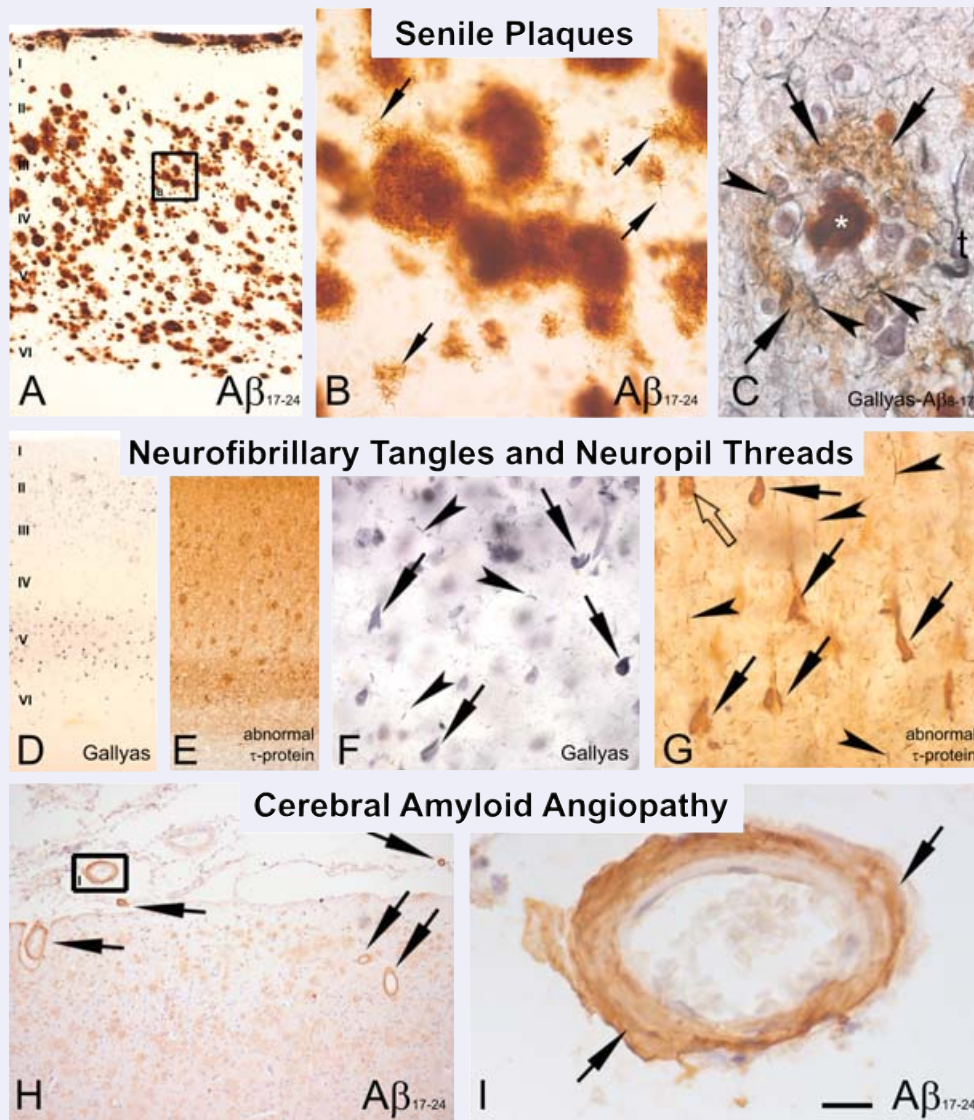


Fig. 1 (A–C) Senile plaques in the temporal neocortex of AD cases. All layers are occupied by senile plaques, which contain A β as demonstrated by immunolabelling with an antibody raised against A β_{17-24} (4G8). In the higher magnification, the fibrillar nature of the A β deposits can be seen (arrows in **B**). The ‘needle-like’ appearance characterizes even diffuse A β -deposits (arrows in **B**; [152]). **C** shows a cored neuritic plaques stained in a combination of a Gallyas-silver staining for neurofibrillary material (black) and anti-A β_{8-17} (6F3D) immunohistochemistry (brown). The amyloid core (*) is seen in the center of the plaques surrounded by a halo of diffuse A β -deposits (arrows). Here dystrophic neurites occur, which contain argyrophilic neurofibrillary material (arrowheads) indicative for neuritic plaques [35]. Adjacent to the cored neuritic plaques there is a NFT (t). **(D, E)** NFTs and NTs in the temporal cortex of an AD case. NFTs are most prominent in the pyramidal cell layers III and V. NFTs and neuropil threads contain fibrillar material detected by the Gallyas silver methods **(D)**. These fibrils consist of aggregates of abnormally phosphorylated τ -protein **(E)**. With the antibody against abnormal τ -protein not only Gallyas-positive fibrils are marked but also non-aggregated abnormal τ -protein **(E; [8])**. **(F, G)** NFTs (arrows) and NTs (arrowheads) in the subiculum/ CA1 region at the higher magnification level. Both structures are stained with the Gallyas silver method and an antibody directed against abnormal τ -protein (AT-8). The neuron indicated with the open arrow shows accumulation of abnormal τ -protein in the pre-tangle status. **(H, I)** Cerebral amyloid angiopathy in the parietal cortex of an AD patient. There are A β -deposits in leptomeningeal and cortical vessels (arrows in **H**). The higher magnification shows the destruction of the vessel wall by A β -deposits that replace smooth muscle cells of the media (arrows in **I**). The numbers I–VI indicate the cortical layers in **A** and **D**. Calibration bar in **I** valid for: **A** = 300 μ m; **B** = 30 μ m; **C, I** = 15 μ m; **D, H** = 150 μ m; **E** = 370 μ m; **F, G** = 50 μ m.

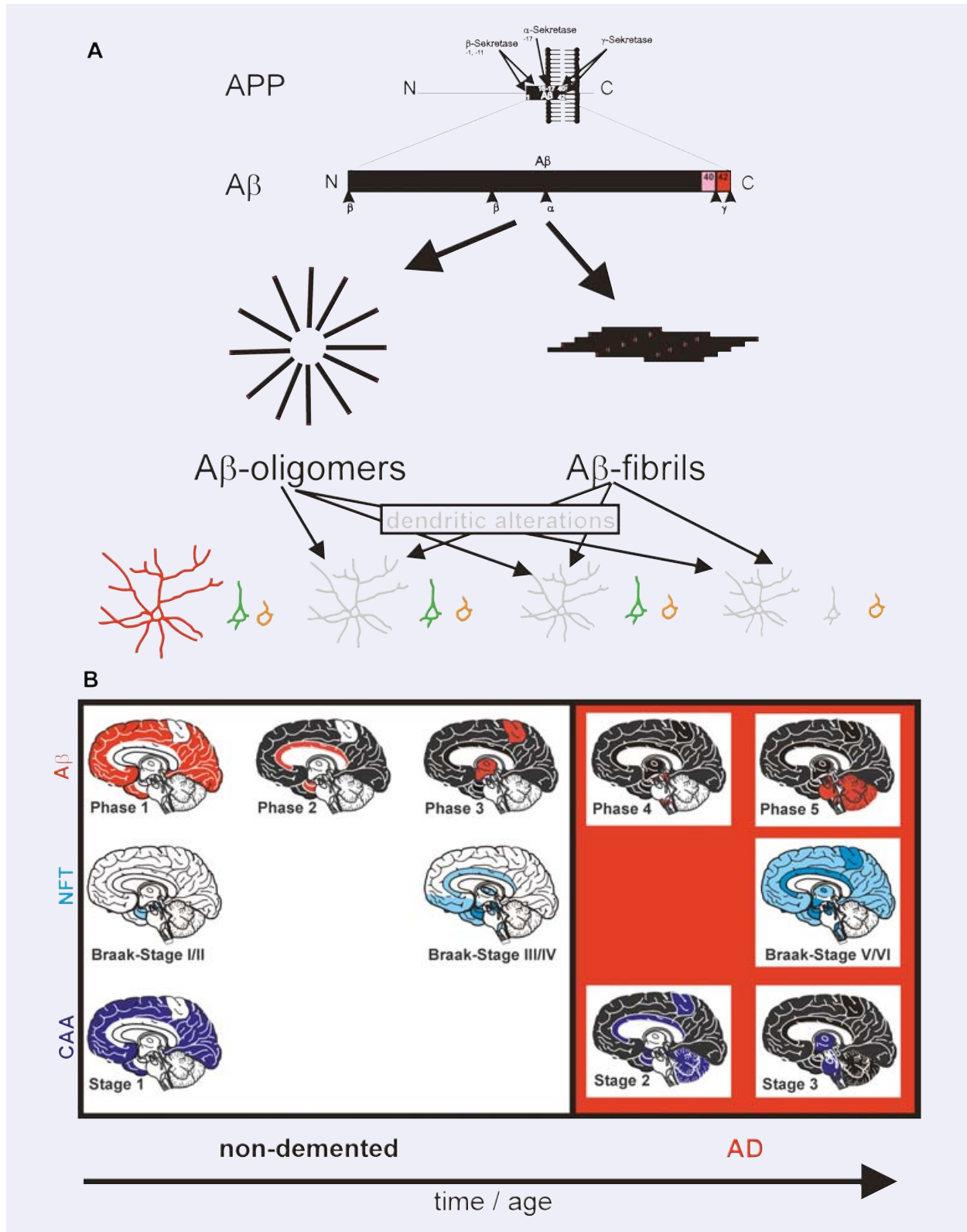




Fig. 2 Schematic representation of A β generation, aggregation, deposition in the brain and its relation to neuronal changes. **(A)** A β is the cleavage product of β - and γ -secretase cleavage of the amyloid precursor protein (APP) [14]. It is a 39–43 amino acid protein. A β_{40} and A β_{42} are the major forms [40]. A β forms oligomers [64, 70] and fibrils [13, 86]. It is not clear whether oligomeric A β can form fibrils. However, the hypothesis that a conformational switch of A β is decisive for either fibril formation or oligomer formation has been supported by a recent study [153]. Fibrillar and oligomeric A β alter neurons [51, 52, 67, 69, 72–74, 154]. An interaction between A β -oligomers with glutamatergic synapses has been demonstrated [65–67]. Moreover, neurons with a prominent, highly ramified dendritic tree are more vulnerable than neurons exhibiting only single dendrites indicating a selective vulnerability of different types of neurons depending on the dendritic tree anatomy [51]. Neurons in grey represent degenerated neurons whereas those painted in colour are intact. **(B)** The hierarchical expansion of A β -deposits throughout the brain follows five phases [17] (areas marked in red are newly involved in A β -plaque deposition, areas marked in black are not newly involved in A β -plaque pathology but exhibit A β -plaques): First A β -plaques occur in the neocortex (phase 1). Then they expand into allocortical regions (phase 2), the basal ganglia and the diencephalon (phase 3), and into the midbrain and the medulla oblongata (phase 4). In the fifth and final phase the pons and the cerebellum also exhibit A β -deposits. The regions of the medial temporal lobe exhibit a similar sequence of A β -plaque deposition in its subfields that strongly correlates with these phases [17, 18] (Table 1). The expansion of A β -plaque pathology goes along with that of NFTs as indicated by the Braak-stages [19] (Braak-stages: areas marked in light blue are newly involved in NFT pathology, areas marked in dark blue are not newly involved in NFT pathology but exhibit NFTs). End stage A β - and NFT-pathology (A β -phase 4, 5; Braak stage V, VI) is associated with the clinical picture of AD whereas early stages (A β -phase 1–2; Braak stage I–III) of the disease are usually not clinically apparent [17, 125]. Phase 3 and Braak-stage IV are often associated with AD but are also found in non-demented cases [17]. Parallel with the deposition of A β -plaques and the generation of NFTs CAA develops (CAA-stages: areas marked in scarab blue are newly involved in vascular A β deposition, areas marked in black are not newly involved in vascular A β pathology but exhibit CAA). First vascular A β -deposits occur in the first stage of CAA in leptomeningeal and parenchymal vessels of neocortical regions. In the second stage, allocortical regions, the midbrain and the cerebellum become involved (Table 1). In stage 3, CAA is also seen in the pons, the medulla oblongata, the basal ganglia and the thalamus [20]. AD cases most frequently exhibit late stage CAA, *i.e.* CAA-stages 2 and 3 as well (see also Fig. 3C). Animal experiments indicated that the phases of A β -deposition represent a time course of the development of this pathology [33]. Together with the time-dependent degeneration of distinct types of neurons these data strongly suggest that A β triggers the process of AD-related neurodegeneration. This hypothesis is strongly supported by the finding that A β -triggers τ -pathology in APP- τ -transgenic mice [155, 156] and after injection into the brain of τ -single transgenic mice [157].

not depending on A β -aggregation [58–60]. Mouse models carrying a presenilin mutation may, therefore, not be ideally suited for studying A β -induced neurodegeneration.

Despite the lack of neuron loss most APP-transgenic mouse models showed ‘cognitive symptoms’ [61–63]. Recently, A β -oligomers have been found in the AD and APP-transgenic mouse brain [64]. A β -oligomers interact with glutamatergic synapses [65–67] and inhibit long-term potentiation [68, 69]. The injection of dodecameric A β -oligomers, *i.e.* ‘A β *56’ into the brain induced transient ‘cognitive symptoms’ in the treated animals [70]. However, it is not clear whether such transient ‘clinical’ changes have a distinct morphological correlative or not. The E693 Δ Mutation of the APP gene was recently identified in a Japanese pedigree of AD patients [71]. The mutant A β peptide showed enhanced oligomerization but no fibrillization [71] arguing in favour of A β -oligomers as a toxic A β form at least in the brain of the diseased APP E693 Δ family members.

In APP-transgenic mice neuritic/dendritic degeneration has been observed in association with amyloid plaques as well as in the absence of A β -deposits [51, 52, 72–74]. Moreover, there is a hierarchical vulnerability of different types of neurons to A β -aggregates similar to that seen in the human brain [51]. Interestingly, those neurons with a prominent dendritic tree are most susceptible to A β -induced neurodegeneration while those with only few and small dendrites remained unaffected [51]. The vulnerability of neurons with a prominent dendritic tree fits with the concept of dendritic/synaptic alterations by extracellular A β -oligomers [65–67, 69].

The role of intraneuronal A β , especially A β -oligomers in the context of neuronal degeneration is not clear. To date it is obvious that A β is produced by neurons [75, 76] and that it can accumulate within neurons [75]. Some of these neurons also showed features of synaptic degeneration [77] and contained oligomeric A β -aggregates [78]. However, A β also occurs in the extracellular space of APP-transgenic mouse models and the human brain. Thus, reuptake of A β and/or A β -oligomers may also explain intracellular A β and oligomeric A β -aggregates. The occurrence of A β within multivesicular bodies [77] – multivesicular bodies are formed during the maturation from early to late endosomes and, thereby, represent organelles of the endocytic pathway [79] – also argues in favour of endocytosis of amyloid or amyloidogenic material. Moreover, amyloid plaques can also be formed in mice producing A β by extracellular cleavage of a BRI-A β 42 construct [80]. Further studies are required to clarify the role of intracellular A β .

Contribution of CAA to the degeneration of neurons

A total of 80–100% of the AD patients exhibit CAA [16, 81–83] (for review see: [81, 83, 84]). The overall expansion of CAA is more advanced in AD cases when compared to non-AD controls and it correlates with the Braak stages, the phases of A β -deposition, and the degree of dementia (Figs. 2 and 3) [20, 81, 85].

Table 1:

A: Disease stage at which senile plaques and CAA appear in the different regions of the human brain		
Brain region	Senile plaques	CAA
Frontal cortex	Phase 1	Stage 1
Parietal cortex	Phase 1	Stage 1
Temporal cortex	Phase 1	Stage 1
Occipital cortex	Phase 1	Stage 1
Hippocampal formation	Phase 2	Stage 2
Insular cortex	Phase 2	Stage 2
Cingulate cortex	Phase 2	Stage 2
Entorhinal cortex	Phase 2	Stage 2
Amygdala	Phase 2	Stage 2
Hypothalamus	Phase 3	Stage 2
Thalamus	Phase 3	Stage 3
Basal ganglia	Phase 3	Stage 3
Basal forebrain nuclei	Phase 3	Stage 3
Midbrain	Phase 4	Stage 2
Medulla oblongata	Phase 4	Stage 3
Pons	Phase 5	Stage 3
Cerebellum	Phase 5	Stage 2

The phases of senile plaque deposition indicate in which phase a given region is involved in A β -plaque pathology [17]. Likewise the stage of CAA indicates in which stage a given region is involved in CAA [20]. The grey shades indicate the correlating severities of A β -phases and CAA-stages.

Pathologically, CAA is characterized by the deposition of A β in leptomeningeal, cortical and subcortical cerebral vessels [86]. In addition to arteries and veins capillaries can be affected as well [87]. The deposition of A β in the vessel wall leads to destruction of smooth muscle cells in the vessel wall and finally to a fragile vessel wall [88]. In doing so, rupture of such fragile, CAA-affected vessels can cause intracerebral hemorrhage [15, 16, 88].

A β deposition in capillaries distinguishes two types of CAA: CAA-type 1 = CAA with capillary CAA; and CAA-type 2 = CAA without capillary involvement [89]. Other authors suggested that capillary involvement represents most severe CAA but not a distinct type [90]. The strong association of the apolipoprotein E (APOE) ϵ 4-allele with the capillary type as well as to the occurrence of capillary CAA in all stages of parenchymal A β -deposition [89] argue in favour of distinct types of CAA. Recently, CAA-induced capillary occlusion has been found to explain blood flow disturbances in an APP-transgenic mouse

B: Disease stage at which senile plaques appear in the different subdivisions of the medial temporal lobe	
MTL region	Senile plaques
Temporal cortex	Phase 1
Entorhinal cortex (except pre- α layer)	Phase 2
CA1/ Subiculum	Phase 2
Presubicular region	Phase 3
Molecular layer of the Fascia Dentata	Phase 3
MTL: white matter	Phase 3
CA4	Phase 4
Pre- α layer of the entorhinal cortex	Phase 4

The expansion of A β -deposition in the different subfields of the medial temporal lobe correlates with that in the entire brain [17]. The table depicts which medial temporal lobe subfields are involved in which phase of A β -deposition in the medial temporal lobe [18]. The grey shades indicate the correlating severities of A β -deposition in the medial temporal lobe.

model [91]. Moreover, other authors described functional deficits in these mice [92] indicating an affection of those thalamic nuclei, which exhibit capillary CAA with capillary occlusion [91]. Imaging studies revealed that hypoperfusion is well known in the brains of AD patients [93–95]. In the light of these results CAA-related capillary occlusion is one possible morphological correlative for hypoperfusion. Ischaemic lesions were usually not found near capillary occlusions in human and transgenic mouse brain [91]. However, cerebral infarction is a well-known complication of CAA [15, 16].

These studies suggest that CAA with capillary occlusion contributes to neuronal dysfunction in AD in addition to direct neurotoxic effects of A β . This conclusion is supported by the predominant occurrence of capillary CAA (CAA-type 1) in AD cases [83, 90, 96] (Fig. 5).

Clinical impact of A β and its therapeutic possibilities

Since A β plays a key role in the pathogenesis of AD and since A β is a driving force for neuritic and synaptic degeneration it is a primary target for therapy. Today, blocking A β -production by β - or γ -secretase inhibition [97–100], and active and passive vaccination against A β [101–103] appear to be promising strategies.

Inhibitors for the γ -secretase often also block Notch-processing and, therefore, go along with severe side effects, *i.e.* alteration

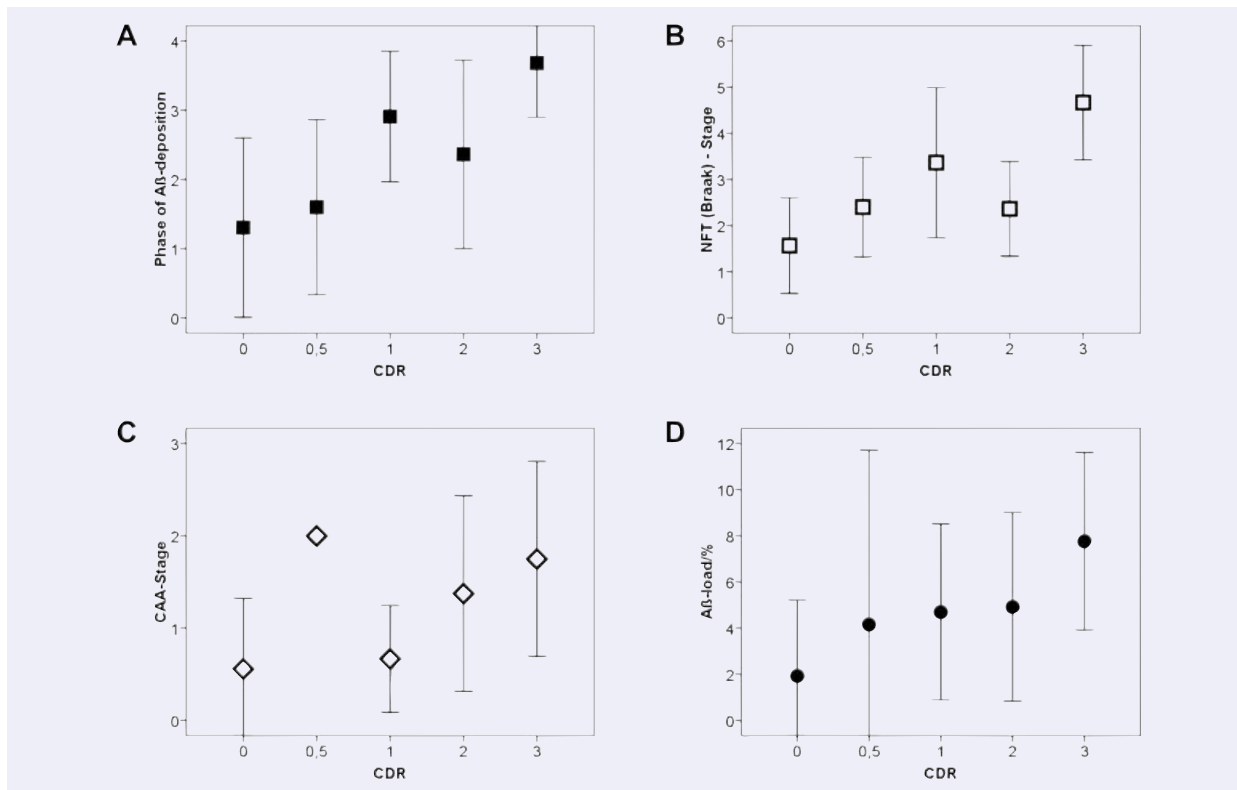


Fig. 3 Expansion of A β -plaque pathology in the medial temporal lobe (Phase of A β -deposition) [18] (**A**), NFTs (Braak stage [19]) (**B**), and CAA (CAA-stage) [20] (**C**) in the brain of non-demented and demented patients. The degree of dementia is given by the CDR-score. AD cases (cases with CDR-scores of 1–3; other causes of dementia were excluded) showed more widely distributed A β -plaques (**A**; $n = 214$ cases; Student's t -test $P < 0.001$), NFTs (**B**; $n = 214$ cases; Student's t -test $P < 0.001$), and CAA (**C**; $n = 67$ cases; Student's t -test $P < 0.001$) than non-demented cases with CDR-scores of 0. MCI patients with a CDR-score of 0.5 [158, 159] showed intermediate stages. (**D**) The A β -load (obtained as described earlier [44]) in the temporal neocortex was also higher in AD cases than in non-demented individuals with a CDR-score of 0 ($n = 177$ cases; Student's t -test $P < 0.001$). Mean values are presented and the standard deviation is indicated by the bars.

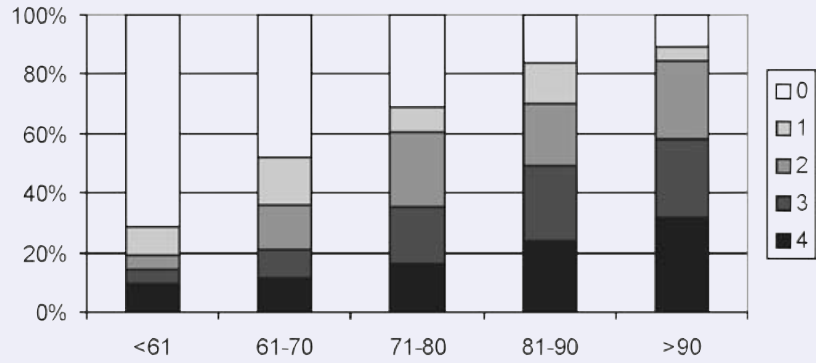
of lymphopoiesis and intestinal cell differentiation [104]. Newly developed γ -secretase inhibitors are sought to block the γ -secretase specific for APP-processing and to avoid Notch-related side effects [97, 100]. In higher doses γ -secretase inhibitors are capable of promoting carcinogenesis [105]. Absence of BACE-1 in BACE-1-knockout/ APP-transgenic mice reduced the A β -load in comparison to APP-transgenic mice with endogenous BACE-1 activity [106–108]. In addition, the β -secretase (BACE-1) function is also involved in synaptic plasticity and myelination [107, 109, 110]. Thus, so far β - and γ -secretase inhibitors are not clinically proven and the side effects reported for such inhibitors imply a very careful and critical testing of such drugs in the future.

Non-steroidal anti-inflammatory drugs like ibuprofen and indomethacin also modulate the γ -secretase cleavage of APP [111]. Although these drugs are well proven and widely used in rheumatology, their impact for the treatment of AD is controversially discussed [112–116].

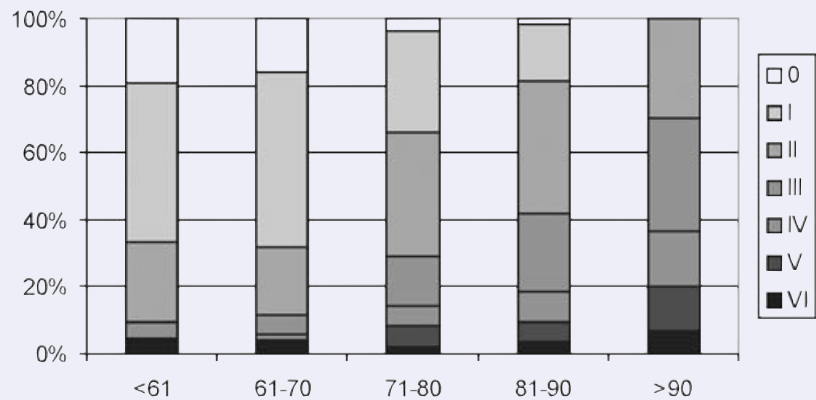
Vaccination strategies are successful in APP-transgenic mice [101–103]. Both, active and passive vaccination, lead to a reduction of the A β -load and improve the performance of APP-transgenic mice in cognitive tests [101–103]. Active vaccination has already been tested in human beings. Although active vaccination leads to a reduction of A β in the brain [117–119] and to a slower progression of cognitive decline [120] severe side effects, *i.e.* aseptic meningoencephalitis occurred in 6% of the treated patients [121]. There was no evidence so far that A β -vaccination improved cognition of demented patients [122]. The aseptic meningoencephalitis after A β -vaccination is a T-cell-mediated inflammatory reaction induced by the dominant T-cell epitope A β _{10–24} [123]. The development of vaccines sparing such epitopes appears to be very promising [123]. A further side effect observed after passive immunization in animal models was an increased frequency of hemorrhages due to CAA [124]. An option to avoid such side effects triggered by vascular A β -deposition could be to start with

Fig. 4 (A) The frequency of patients with A β -deposits increases with age. Only 11% of the patients older than 90 years of age were free of A β -deposits in a sample of 506 autopsy cases. Accordingly, the prevalence of higher phases of A β -deposition as observed in the medial temporal lobe [18] also increases with age. **(B)** Similar to the deposition of A β NFTs occur in most individuals older than 90 years. In our sample, there was no one free of NFTs at this age. The percentage of cases with NFTs in cases younger than 71 years of age was strikingly higher than that of those with A β -plaques. This result is in line with previously published samples [48]. **(C)** In parallel with the increasing frequency of A β -deposits and NFTs in elderly people CAA occurs more often in advanced ages and the prevalence of higher stages increases when compared with younger age groups. This is demonstrated in a sample of 88 autopsy cases (reproduced with kind permission from [83]).

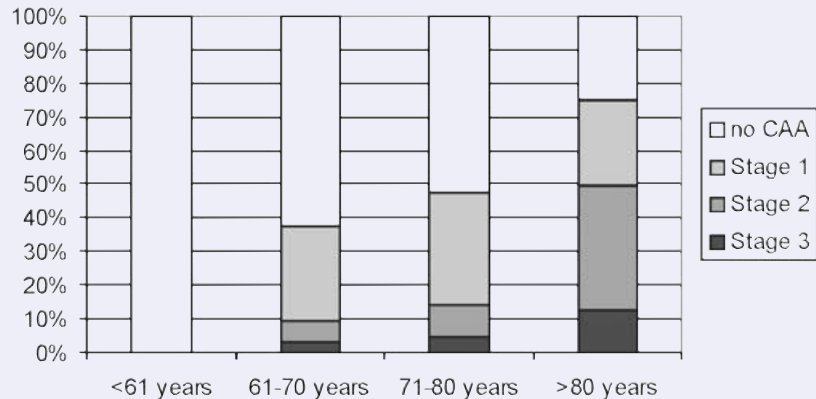
A Frequency of A β -phases determined in the MTL in Elderly Individuals



B Frequency of Braak-Stages in Elderly Individuals



C Frequency of CAA-Stages in Elderly Individuals



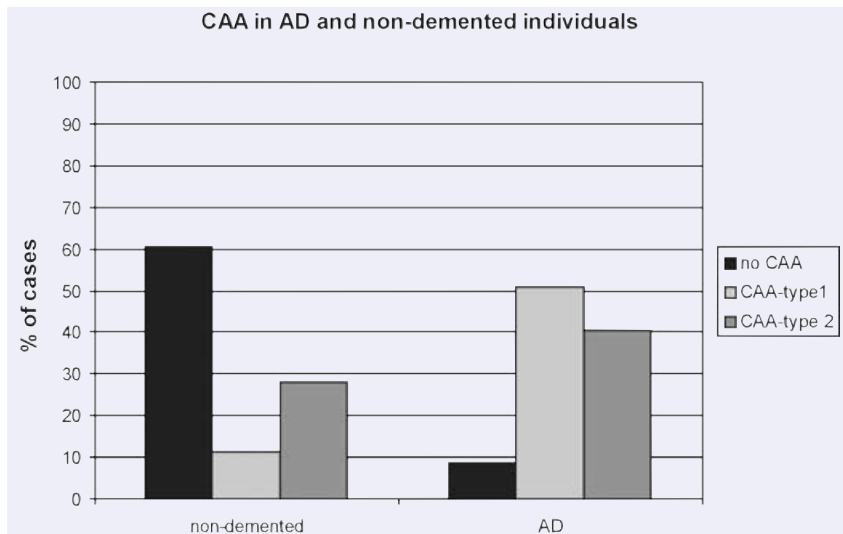


Fig. 5 Prevalence of CAA and its subtypes in AD and age-matched non-demented control cases. In non-demented controls, most individuals were free of CAA (60.4%). Controls with CAA most frequently exhibited CAA-type 2 lacking capillary involvement (28.2%). Only 11.4% of the controls showed capillary CAA (CAA-type 1). On the other hand, capillary CAA (CAA-type 1) was found in 51% of the AD cases. Only 40% of the AD cases exhibited CAA-type 2 and 9% were free of CAA. These data confirm that capillary CAA is frequent in AD [96].

A β -vaccination already in asymptomatic patients without CAA [122]. In animal models, this therapeutic setting has been shown to be superior compared with beginning at later stages [102]. Taken together, vaccination strategies appear to be very promising but this treatment strategy still needs to be successfully tested in human beings for its therapeutic effects and drug safety.

As already described above, A β -deposits occur not only in AD patients but also in cognitively normal individuals [19, 45, 46]. The hierarchical expansion of neurofibrillary and A β -pathology throughout the brain starts with the first senile plaques in the neocortex and the first NFTs in the transentorhinal region, the basal nucleus of Meynert and the dorsal raphe nucleus in non-demented individuals [12, 17, 19, 125–127] (Fig. 2B, Table 1). In APP-transgenic mice a similar sequence of A β -deposition has been reported as in the human brain [33] arguing in favour of the hypothesis that overall A β -deposition in AD is the end stage of a pathological process starting with the first neocortical plaques. The strong correlation between NFT distribution as represented by the Braak-stage and the expansion of A β -deposition throughout the brain further supports this notion [17]. Following this hypothesis, pre-clinical AD starts in non-demented patients approximately 20–30 years before the onset of dementia [48, 128] without major neuronal loss. In doing so, these patients with the earliest signs of AD pathology would be the best candidates for a protection from further A β -toxicity, *e.g.* by vaccination.

The identification of such early, asymptomatic stages of AD is not possible today before autopsy. However, autopsy studies revealed that initial stages of AD-related pathology prevail in most individuals older than 60 years of age [48] (Fig. 4). The prevalence of advanced stages of AD-related pathology increases with age [48] (Fig. 4). The prevalence of end stage AD-related pathology, thereby, correlates with the clinical picture of AD (Fig. 3A–C). The increase of early stages precedes that of end stages by 20–30 years [48, 128]. Extrapolation of the prevalence of AD with

increasing life expectancy predicts a dramatic rise of symptomatic AD patients in the future (Fig. 4). This demographic prediction strongly underscores the importance to protect people from AD whenever applicable before symptoms arise.

Imaging techniques using specific markers, *e.g.* the brain amyloid ligand 11C-labelled Pittsburgh Compound B (PIB), have been developed to detect A β in the brain [129–131]. These techniques already allow a good distinction between AD and non-AD patients [129, 130]. The pattern of A β detected with these imaging methods is similar to that seen after autopsy [17, 19, 129, 132–134]. However, reagents like PIB are not specific for binding only on A β -deposits [135]. Other protein aggregates may cross-react with this dye [135]. Moreover, PIB is a thioflavin S analogue [136] and, in doing so, does not detect all diffuse A β -deposits that are seen immunohistochemically [134]. Therefore, today it is not possible to identify clinically normal patients with A β -plaques with these imaging techniques in a sensitive and specific manner but one may expect that such techniques will be improved during the next years allowing a much more sensitive detection of A β -plaques in the future even in non-demented individuals.

Genetic effects on A β -deposition are numerous [137, 138]. However, only four genes are widely proven for their influence on AD pathology: APP, PS1, PS2 and APOE [139–145]. APP, PS1 and PS2 gene mutations are all associated with familial forms of AD [139, 140, 143–146], whereas the APOE ϵ 4 allele is associated with sporadic AD and CAA [141, 147–149]. Screening for APP, PS1 and PS2 mutations can help to detect family members at risk for AD [146]. For sporadic AD, APOE genotyping is often determined in demented patients but its diagnostic value is limited [150]. APOE ϵ 4 carriers develop clinical and neuropathological changes of AD usually earlier than non-carriers [150]. Age and gender, thereby, additionally modify its effects on the neuropathological pattern of neurofibrillary tangle and senile plaque distribution [151].

Conclusions

The deposition of A β is a slowly progressive process starting in the neocortex. Further brain regions become involved in a hierarchical sequence. The spatial distribution and the expansion of A β -plaques and CAA are, thereby, correlated. A β -aggregates, *i.e.* A β -oligomers and/ or fibrillar A β aggregates induce, on the one hand, neuritic, especially dendritic degeneration and, on the other hand, capillary occlusion leading to cerebral blood flow disturbances. In doing so, there are two major mechanisms in which A β alters the brain of AD-patients: neurotoxicity of A β -aggregates and vessel occlusion. Therefore, therapeutic strategies should not focus only on protecting the neurotoxic effects of A β but also on the reduction of vascular deposits and an improvement of cerebral blood flow. Most importantly, AD-pathology starts in non-demented individuals a long time before the onset

of clinical symptoms. Such a long preclinical course of AD is ideally suited for starting protective therapies such as vaccination. The aim would be the prevention of clinical AD or the prolongation of the preclinical stage. In the light of the demographically predictable increase of patients developing AD, it seems to be better to protect people from getting AD rather than to treat demented patients with the limitations of an already irrecoverable altered brain.

Acknowledgements

The work reviewed here was supported by the DFG: TH624/4-1 (DRT), TH624/4-2 (DRT), BONFOR: O-154.0041 (DRT), and the NIH-NIA: AG12411 (WSTG).

References

1. **Alzheimer A.** Ueber eine eigenartige Erkrankung der Hirnrinde. *Allg Zschr Psych* 1907; 64: 146–8.
2. **DeKosky ST, Scheff SW.** Synapse loss in frontal cortex biopsies in Alzheimer's disease: correlation with cognitive severity. *Ann Neurol*. 1990; 27: 457–64.
3. **Masliah E, Mallory M, Hansen L, DeTeresa R, Alford M, Terry R.** Synaptic and neuritic alterations during the progression of Alzheimer's disease. *Neurosci Lett*. 1994; 174: 67–72.
4. **Terry RD, Peck A, DeTeresa R, Schechter R, Horoupian DS.** Some morphometric aspects of the brain in senile dementia of the Alzheimer type. *Ann Neurol*. 1981; 10: 184–92.
5. **Duyckaerts C, Dickson DW.** Neuropathology of Alzheimer's disease. In: Dickson D, editor. *Neurodegeneration: the molecular pathology of dementia and movement disorders*. Basel: ISN Neuropath Press; 2003. pp. 47–65.
6. **Braak H, Braak E.** Neuropil threads occur in dendrites of tangle-bearing nerve cells. *Neuropathol Appl Neurobiol*. 1988; 14: 39–44.
7. **Bancher C, Brunner C, Lassmann H, Budka H, Jellinger K, Wiche G, Seitelberger F, Grundke-Iqbal I, Iqbal K, Wisniewski HM.** Accumulation of abnormally phosphorylated tau precedes the formation of neurofibrillary tangles in Alzheimer's disease. *Brain Res*. 1989; 477: 90–9.
8. **Braak E, Braak H, Mandelkow EM.** A sequence of cytoskeleton changes related to the formation of neurofibrillary tangles and neuropil threads. *Acta Neuropathol*. 1994; 87: 554–67.
9. **Grundke-Iqbal I, Iqbal K, Quinlan M, Tung YC, Zaidi MS, Wisniewski HM.** Microtubule-associated protein tau. A component of Alzheimer paired helical filaments. *J Biol Chem*. 1986; 261: 6084–9.
10. **Grundke-Iqbal I, Iqbal K, Tung YC, Quinlan M, Wisniewski HM, Binder LI.** Abnormal phosphorylation of the microtubule-associated protein tau (tau) in Alzheimer cytoskeletal pathology. *Proc Natl Acad Sci USA*. 1986; 83: 4913–7.
11. **Bancher C, Brunner C, Lassmann H, Budka H, Jellinger K, Seitelberger F, Grundke-Iqbal I, Iqbal K, Wisniewski HM.** Tau and ubiquitin immunoreactivity at different stages of formation of Alzheimer neurofibrillary tangles. *Prog Clin Biol Res*. 1989; 317: 837–48.
12. **Sassin I, Schultz C, Thal DR, Rub U, Arai K, Braak E, Braak H.** Evolution of Alzheimer's disease-related cytoskeletal changes in the basal nucleus of Meynert. *Acta Neuropathol*. 2000; 100: 259–69.
13. **Masters CL, Simms G, Weinman NA, Multhaup G, McDonald BL, Beyreuther K.** Amyloid plaque core protein in Alzheimer disease and Down syndrome. *Proc Natl Acad Sci USA*. 1985; 82: 4245–9.
14. **Haass C, Koo EH, Mellon A, Hung AY, Selkoe DJ.** Targeting of cell-surface beta-amyloid precursor protein to lysosomes: alternative processing into amyloid-bearing fragments. *Nature*. 1992; 357: 500–3.
15. **Mandybur TI.** Cerebral amyloid angiopathy: the vascular pathology and complications. *J Neuropathol Exp Neurol*. 1986; 45: 79–90.
16. **Vinters HV.** Cerebral amyloid angiopathy. In: Barnett HJM, Mohr JP, Stein BM, Yatsu FM, editors. *Stroke. Pathophysiology, diagnosis and management*. 2nd ed. New York: Churchill Livingstone; 1992. pp. 821–58.
17. **Thal DR, Rüb U, Orantes M, Braak H.** Phases of Abeta-deposition in the human brain and its relevance for the development of AD. *Neurology*. 2002; 58: 1791–800.
18. **Thal DR, Rüb U, Schultz C, Sassin I, Ghebremedhin E, Del Tredici K, Braak E, Braak H.** Sequence of Abeta-protein deposition in the human medial temporal lobe. *J Neuropathol Exp Neurol*. 2000; 59: 733–48.
19. **Braak H, Braak E.** Neuropathological staging of Alzheimer-related changes. *Acta Neuropathol*. 1991; 82: 239–59.
20. **Thal DR, Ghebremedhin E, Orantes M, Wiestler OD.** Vascular pathology in Alzheimer's disease: correlation of cerebral amyloid angiopathy and arteriosclerosis / lipohyalinosis with cognitive decline. *J Neuropathol Exp Neurol*. 2003; 62: 1287–301.
21. **Gold G, Kovari E, Corte G, Herrmann FR, Canuto A, Bussiere T, Hof PR, Bouras C, Giannakopoulos P.** Clinical validity of A beta-protein deposition staging in brain aging and Alzheimer disease. *J Neuropathol Exp Neurol*. 2001; 60: 946–52.

22. Rowe CC, Ng S, Ackermann U, Gong SJ, Pike K, Savage G, Cowie TF, Dickinson KL, Maruff P, Darby D, Smith C, Woodward M, Merory J, Tochon-Danguy H, O'Keefe G, Klunk WE, Mathis CA, Price JC, Masters CL, Villemagne VL. Imaging beta-amyloid burden in aging and dementia. *Neurology*. 2007; 68: 1718–25.
23. Thal DR, Arendt T, Waldmann G, Holzer M, Zedlick D, Rüb U, Schober R. Progression of neurofibrillary changes and PHF-tau in end-stage Alzheimer's disease is different from plaque and cortical microglial pathology. *Neurobiol Aging*. 1998; 19: 517–25.
24. Thal DR, Glas A, Schneider W, Schober R. Differential pattern of beta-amyloid, amyloid precursor protein and apolipoprotein E expression in cortical senile plaques. *Acta Neuropathol*. 1997; 94: 255–65.
25. Arriagada PV, Growdon JH, Hedley-Whyte ET, Hyman BT. Neurofibrillary tangles but not senile plaques parallel duration and severity of Alzheimer's disease. *Neurology*. 1992; 42: 631–9.
26. Hyman BT, Marzloff K, Arriagada PV. The lack of accumulation of senile plaques or amyloid burden in Alzheimer's disease suggests a dynamic balance between amyloid deposition and resolution. *J Neuropathol Exp Neurol*. 1993; 52: 594–600.
27. Giannakopoulos P, Herrmann FR, Bussiere T, Bouras C, Kovari E, Perl DP, Morrison JH, Gold G, Hof PR. Tangle and neuron numbers, but not amyloid load, predict cognitive status in Alzheimer's disease. *Neurology*. 2003; 60: 1495–500.
28. Knopman DS, Parisi JE, Salvati A, Floriach-Robert M, Boeve BF, Ivnik RJ, Smith GE, Dickson DW, Johnson KA, Petersen LE, McDonald WC, Braak H, Petersen RC. Neuropathology of cognitively normal elderly. *J Neuropathol Exp Neurol*. 2003; 62: 1087–95.
29. Davis DG, Schmitt FA, Wekstein DR, Markesbery WR. Alzheimer neuropathologic alterations in aged cognitively normal subjects. *J Neuropathol Exp Neurol*. 1999; 58: 376–88.
30. Lue LF, Kuo YM, Roher AE, Brachova L, Shen Y, Sue L, Beach T, Kurth JH, Rydel RE, Rogers J. Soluble amyloid beta peptide concentration as a predictor of synaptic change in Alzheimer's disease. *Am J Pathol*. 1999; 155: 853–62.
31. Dickson DW, Crystal HA, Mattiace LA, Masur DM, Blau AD, Davies P, Yen SH, Aronson MK. Identification of normal and pathological aging in prospectively studied nondemented elderly humans. *Neurobiol Aging*. 1992; 13: 179–89.
32. Josephs KA, Whitwell JL, Ahmed Z, Shiung MM, Weigand SD, Knopman DS, Boeve BF, Parisi JE, Petersen RC, Dickson DW, Jack CR Jr. Beta-amyloid burden is not associated with rates of brain atrophy. *Ann Neurol*. 2008; 63: 204–12.
33. Thal DR, Capetillo-Zarate E, Del Tredici K, Braak H. The development of amyloid beta protein deposits in the aged brain. *Sci Aging Knowledge Environ*. 2006; re1.
34. Fiala JC. Mechanisms of amyloid plaque pathogenesis. *Acta Neuropathol*. 2007; 114: 551–71.
35. The National Institute on Aging. Consensus recommendations for the postmortem diagnosis of Alzheimer's disease: The National Institute on Aging, and Reagan Institute Working Group on Diagnostic Criteria for the Neuropathological Assessment of Alzheimer's Disease. *Neurobiol Aging*. 1997; 18: S1–2.
36. Dickson DW, Farlo J, Davies P, Crystal H, Fuld P, Yen SH. Alzheimer's disease. A double-labeling immunohistochemical study of senile plaques. *Am J Pathol*. 1988; 132: 86–101.
37. Griffin WS, Sheng JG, Roberts GW, Mrak RE. Interleukin-1 expression in different plaque types in Alzheimer's disease: significance in plaque evolution. *J Neuropathol Exp Neurol*. 1995; 54: 276–81.
38. Dickson DW. The pathogenesis of senile plaques. *J Neuropathol Exp Neurol*. 1997; 56: 321–39.
39. Wang D, Munoz DG. Qualitative and quantitative differences in senile plaque dystrophic neurites of Alzheimer's disease and normal aged brain. *J Neuropathol Exp Neurol*. 1995; 54: 548–56.
40. Iwatsubo T, Odaka A, Suzuki N, Mizusawa H, Nukina N, Ihara Y. Visualization of A beta 42(43) and A beta 40 in senile plaques with end-specific A beta monoclonals: evidence that an initially deposited species is A beta 42(43). *Neuron*. 1994; 13: 45–53.
41. Iwatsubo T, Saido TC, Mann DM, Lee VM, Trojanowski JQ. Full-length amyloid-beta (1–42(43)) and amino-terminally modified and truncated amyloid-beta 42(43) deposit in diffuse plaques. *Am J Pathol*. 1996; 149: 1823–30.
42. Saido TC, Iwatsubo T, Mann DM, Shimada H, Ihara Y, Kawashima S. Dominant and differential deposition of distinct beta-amyloid peptide species, A beta N3(pE), in senile plaques. *Neuron*. 1995; 14: 457–66.
43. Saido TC, Yamao-Harigaya W, Iwatsubo T, Kawashima S. Amino- and carboxyl-terminal heterogeneity of beta-amyloid peptides deposited in human brain. *Neurosci Lett*. 1996; 215: 173–6.
44. Thal DR, Capetillo-Zarate E, Schultz C, Rüb U, Saido TC, Yamaguchi H, Haass C, Griffin WST, Del Tredici K, Braak H, Ghebremedhin E. Apolipoprotein E co-localizes with newly formed amyloid beta-protein (Abeta)-deposits lacking immunoreactivity against N-terminal epitopes of Abeta in a genotype-dependent manner. *Acta Neuropathol*. 2005; 110: 459–71.
45. Arriagada PV, Marzloff K, Hyman BT. Distribution of Alzheimer-type pathologic changes in nondemented elderly individuals matches the pattern in Alzheimer's disease. *Neurology*. 1992; 42: 1681–8.
46. Price JL, Davis PB, Morris JC, White DL. The distribution of tangles, plaques and related immunohistochemical markers in healthy aging and Alzheimer's disease. *Neurobiol Aging*. 1991; 12: 295–312.
47. Lalowski M, Golabek A, Lemere CA, Selkoe DJ, Wisniewski HM, Beavis RC, Frangione B, Wisniewski T. The "non-amyloidogenic" p3 fragment (amyloid beta17–42) is a major constituent of Down's syndrome cerebellar preamyloid. *J Biol Chem*. 1996; 271: 33623–31.
48. Braak H, Braak E. Frequency of stages of Alzheimer-related lesions in different age categories. *Neurobiol Aging*. 1997; 18: 351–7.
49. Irizarry MC, Soriano F, McNamara M, Page KJ, Schenk D, Games D, Hyman BT. Abeta deposition is associated with neuropil changes, but not with overt neuronal loss in the human amyloid precursor protein V717F (PDAPP) transgenic mouse. *J Neurosci*. 1997; 17: 7053–9.
50. Thal DR, Capetillo-Zarate E, Galuske RA. Tracing of temporo-entorhinal connections in the human brain: cognitively impaired argyrophilic grain disease cases show dendritic alterations but no axonal disconnection of temporo-entorhinal association neurons. *Acta Neuropathol*. 2008; 115: 175–83.
51. Capetillo-Zarate E, Staufenbiel M, Abramowski D, Haass C, Escher A, Stadelmann C, Yamaguchi H, Wiestler OD, Thal DR. Selective vulnerability of different types of commissural neurons for amyloid beta-protein induced neurodegeneration in APP23 mice correlates with dendritic tree morphology. *Brain*. 2006; 129: 2992–3005.

52. **Wu CC, Chawla F, Games D, Rydel RE, Freedman S, Schenk D, Young WG, Morrison JH, Bloom FE.** Selective vulnerability of dentate granule cells prior to amyloid deposition in PDAPP mice: digital morphometric analyses. *Proc Natl Acad Sci USA.* 2004; 101: 7141–6.
53. **Gomez-Isla T, Price JL, McKeel DW Jr, Morris JC, Growdon JH, Hyman BT.** Profound loss of layer II entorhinal cortex neurons occurs in very mild Alzheimer's disease. *J Neurosci.* 1996; 16: 4491–500.
54. **Langui D, Girardot N, El Hachimi KH, Allinquant B, Blanchard V, Pradier L, Duyckaerts C.** Subcellular topography of neuronal Abeta peptide in APPxPS1 transgenic mice. *Am J Pathol.* 2004; 165: 1465–77.
55. **Hsia AY, Masliah E, McConlogue L, Yu GQ, Tatsuno G, Hu K, Kholodenko D, Malenka RC, Nicoll RA, Mucke L.** Plaque-independent disruption of neural circuits in Alzheimer's disease mouse models. *Proc Natl Acad Sci USA.* 1999; 96: 3228–33.
56. **Calhoun ME, Wiederhold KH, Abramowski D, Phinney AL, Probst A, Sturchler-Pierrat C, Staufenbiel M, Sommer B, Jucker M.** Neuron loss in APP transgenic mice. *Nature.* 1998; 395: 755–6.
57. **Schmitz C, Rutten BP, Pielon A, Schafer S, Wirths O, Tremp G, Czech C, Blanchard V, Multhaup G, Rezaie P, Korr H, Steinbusch HW, Pradier L, Bayer TA.** Hippocampal neuron loss exceeds amyloid plaque load in a transgenic mouse model of Alzheimer's disease. *Am J Pathol.* 2004; 164: 1495–502.
58. **Guo Q, Sopher BL, Furukawa K, Pham DG, Robinson N, Martin GM, Mattson MP.** Alzheimer's presenilin mutation sensitizes neural cells to apoptosis induced by trophic factor withdrawal and amyloid beta-peptide: involvement of calcium and oxyradicals. *J Neurosci.* 1997; 17: 4212–22.
59. **Wolozin B, Iwasaki K, Vito P, Ganjei JK, Lacana E, Sunderland T, Zhao B, Kusiak JW, Wasco W, D'Adamio L.** Participation of presenilin 2 in apoptosis: enhanced basal activity conferred by an Alzheimer mutation. *Science.* 1996; 274: 1710–3.
60. **Chui DH, Tanahashi H, Ozawa K, Ikeda S, Checler F, Ueda O, Suzuki H, Araki W, Inoue H, Shirotani K, Takahashi K, Gallyas F, Tabira T.** Transgenic mice with Alzheimer presenilin 1 mutations show accelerated neurodegeneration without amyloid plaque formation. *Nat Med.* 1999; 5: 560–4.
61. **Nalbantoglu J, Tirado-Santiago G, Lahsaini A, Poirier J, Goncalves O, Verge G, Momoli F, Welner SA, Massicotte G, Julien JP, Shapiro ML.** Impaired learning and LTP in mice expressing the carboxy terminus of the Alzheimer amyloid precursor protein. *Nature.* 1997; 387: 500–5.
62. **Chen G, Chen KS, Knox J, Inglis J, Bernard A, Martin SJ, Justice A, McConlogue L, Games D, Freedman SB, Morris RG.** A learning deficit related to age and beta-amyloid plaques in a mouse model of Alzheimer's disease. *Nature.* 2000; 408: 975–9.
63. **Moran PM, Higgins LS, Cordell B, Moser PC.** Age-related learning deficits in transgenic mice expressing the 751-amino acid isoform of human beta-amyloid precursor protein. *Proc Natl Acad Sci USA.* 1995; 92: 5341–5.
64. **Kayed R, Head E, Thompson JL, McIntire TM, Milton SC, Cotman CW, Glabe CG.** Common structure of soluble amyloid oligomers implies common mechanism of pathogenesis. *Science.* 2003; 300: 486–9.
65. **Lacor PN, Buniel MC, Chang L, Fernandez SJ, Gong Y, Viola KL, Lambert MP, Velasco PT, Bigio EH, Finch CE, Krafft GA, Klein WL.** Synaptic targeting by Alzheimer's-related amyloid beta oligomers. *J Neurosci.* 2004; 24: 10191–200.
66. **Shankar GM, Bloodgood BL, Townsend M, Walsh DM, Selkoe DJ, Sabatini BL.** Natural oligomers of the Alzheimer amyloid-beta protein induce reversible synapse loss by modulating an NMDA-type glutamate receptor-dependent signaling pathway. *J Neurosci.* 2007; 27: 2866–75.
67. **Roselli F, Tirard M, Lu J, Hutzler P, Lamberti P, Livrea P, Morabito M, Almeida OF.** Soluble beta-amyloid1–40 induces NMDA-dependent degradation of postsynaptic density-95 at glutamatergic synapses. *J Neurosci.* 2005; 25: 11061–70.
68. **Berman DE, Dall'armi C, Voronov SV, McIntire LB, Zhang H, Moore AZ, Staniszewski A, Arancio O, Kim TW, Di Paolo G.** Oligomeric amyloid-beta peptide disrupts phosphatidylinositol-4,5-bisphosphate metabolism. *Nat Neurosci.* 2008; 11: 547–54.
69. **Wang HW, Pasternak JF, Kuo H, Ristic H, Lambert MP, Chromy B, Viola KL, Klein WL, Stine WB, Krafft GA, Trommer BL.** Soluble oligomers of beta amyloid (1–42) inhibit long-term potentiation but not long-term depression in rat dentate gyrus. *Brain Res.* 2002; 924: 133–40.
70. **Lesne S, Koh MT, Kotilinek L, Kaye R, Glabe CG, Yang A, Gallagher M, Ashe KH.** A specific amyloid-beta protein assembly in the brain impairs memory. *Nature.* 2006; 440: 352–7.
71. **Tomiyama T, Nagata T, Shimada H, Teraoka R, Fukushima A, Kanemitsu H, Takuma H, Kuwano R, Imagawa M, Ataka S, Wada Y, Yoshioka E, Nishizaki T, Watanabe Y, Mori H.** A new amyloid beta variant favoring oligomerization in Alzheimer's-type dementia. *Ann Neurol.* 2008; 63: 377–87.
72. **Meyer-Luehmann M, Spiess-Jones TL, Prada C, Garcia-Alloza M, de Calignon A, Rozkalne A, Koenigsnecht-Talboo J, Holtzman DM, Bacskai BJ, Hyman BT.** Rapid appearance and local toxicity of amyloid-beta plaques in a mouse model of Alzheimer's disease. *Nature.* 2008; 451: 720–4.
73. **Tsai J, Grutzendler J, Duff K, Gan WB.** Fibrillar amyloid deposition leads to local synaptic abnormalities and breakage of neuronal branches. *Nat Neurosci.* 2004; 7: 1181–3.
74. **Spiess TL, Meyer-Luehmann M, Stern EA, McLean PJ, Skoch J, Nguyen PT, Bacskai BJ, Hyman BT.** Dendritic spine abnormalities in amyloid precursor protein transgenic mice demonstrated by gene transfer and intravital multiphoton microscopy. *J Neurosci.* 2005; 25: 7278–87.
75. **Gouras GK, Tsai J, Naslund J, Vincent B, Edgar M, Checler F, Greenfield JP, Haroutunian V, Buxbaum JD, Xu H, Greengard P, Relkin NR.** Intraneuronal Abeta42 accumulation in human brain. *Am J Pathol.* 2000; 156: 15–20.
76. **Hartmann T, Bieger SC, Bruhl B, Tienari PJ, Ida N, Allsop D, Roberts GW, Masters CL, Dotti CG, Unsicker K, Beyreuther K.** Distinct sites of intracellular production for Alzheimer's disease A beta40/42 amyloid peptides. *Nat Med.* 1997; 3: 1016–20.
77. **Takahashi RH, Milner TA, Li F, Nam EE, Edgar MA, Yamaguchi H, Beal MF, Xu H, Greengard P, Gouras GK.** Intraneuronal Alzheimer abeta42 accumulates in multivesicular bodies and is associated with synaptic pathology. *Am J Pathol.* 2002; 161: 1869–79.
78. **Takahashi RH, Almeida CG, Kearney PF, Yu F, Lin MT, Milner TA, Gouras GK.** Oligomerization of Alzheimer's beta-amyloid within processes and synapses of cultured neurons and brain. *J Neurosci.* 2004; 24: 3592–9.
79. **Alberts B, Johnson A, Lewis J, Raff M, Roberts K, Walter P.** The molecular biology

- of the cell. 4th ed. New York: Garland Science; 2002.
80. **McGowan E, Pickford F, Kim J, Onstead L, Eriksen J, Yu C, Skipper L, Murphy MP, Beard J, Das P, Jansen K, DeLucia M, Lin W-L, Dolios G, Wang R, Eckman CB, Dickson DW, Hutton M, Hardy J, Golde T.** Aβ42 is essential for parenchymal and vascular amyloid deposition in mice. *Neuron*. 2005; 47: 191–9.
 81. **Attems J.** Sporadic cerebral amyloid angiopathy: pathology, clinical implications, and possible pathomechanisms. *Acta Neuropathol*. 2005; 110: 345–59.
 82. **Joachim CL, Morris JH, Selkoe DJ.** Clinically diagnosed Alzheimer's disease: autopsy results in 150 cases. *Ann Neurol*. 1988; 24: 50–6.
 83. **Thal DR, Griffin WST, De Vos RAI, Ghebremedhin E.** Cerebral amyloid angiopathy and its relationship to Alzheimer's disease. *Acta Neuropathol*. 2008; 115: 599–609.
 84. **Revesz T, Ghiso J, Lashley T, Plant G, Rostagno A, Frangione B, Holton JL.** Cerebral amyloid angiopathies: a pathologic, biochemical, and genetic view. *J Neuropathol Exp Neurol*. 2003; 62: 885–98.
 85. **Attems J, Quass M, Jellinger KA, Lintner F.** Topographical distribution of cerebral amyloid angiopathy and its effect on cognitive decline are influenced by Alzheimer disease pathology. *J Neurol Sci*. 2007; 257: 49–55.
 86. **Glennner GG, Wong CW.** Alzheimer's disease: initial report of the purification and characterization of a novel cerebrovascular amyloid protein. *Biochem Biophys Res Commun*. 1984; 120: 885–90.
 87. **Surbek B.** L'angiopathie dyshorique (Morel) de l'Écorce cérébrale. Etude anatomo-clinique et statistique, aspect génétique. *Acta Neuropathol*. 1961; 1: 168–97.
 88. **Vonsattel JP, Myers RH, Hedley-Whyte ET, Ropper AH, Bird ED, Richardson EP Jr.** Cerebral amyloid angiopathy without and with cerebral hemorrhages: a comparative histological study. *Ann Neurol*. 1991; 30: 637–49.
 89. **Thal DR, Ghebremedhin E, Rüb U, Yamaguchi H, Del Tredici K, Braak H.** Two types of sporadic cerebral amyloid angiopathy. *J Neuropathol Exp Neurol*. 2002; 61: 282–93.
 90. **Olichney JM, Hansen LA, Hofstetter CR, Lee JH, Katzman R, Thal LJ.** Association between severe cerebral amyloid angiopathy and cerebrovascular lesions in Alzheimer disease is not a spurious one attributable to apolipoprotein E4. *Arch Neurol*. 2000; 57: 869–74.
 91. **Thal DR, Capetillo-Zarate E, Larionov S, Staufenbiel M, Zurbuegg S, Beckmann N.** Cerebral amyloid angiopathy is associated with vessel occlusion and cerebral blood flow disturbances. *Neurobiol Aging*. in press.
 92. **Mueggler T, Baumann D, Rausch M, Staufenbiel M, Rudin M.** Age-dependent impairment of somatosensory response in the amyloid precursor protein 23 transgenic mouse model of Alzheimer's disease. *J Neurosci*. 2003; 23: 8231–6.
 93. **Foster NL, Chase TN, Mansi L, Brooks R, Fedio P, Patronas NJ, Di Chiro G.** Cortical abnormalities in Alzheimer's disease. *Ann Neurol*. 1984; 16: 649–54.
 94. **Johnson NA, Jahng GH, Weiner MW, Miller BL, Chui HC, Jagust WJ, Gorno-Tempini ML, Schuff N.** Pattern of cerebral hypoperfusion in Alzheimer disease and mild cognitive impairment measured with arterial spin-labeling MR imaging: initial experience. *Radiology*. 2005; 234: 851–9.
 95. **Meguro K, Blaizot X, Kondoh Y, Le Mestric C, Baron JC, Chavoix C.** Neocortical and hippocampal glucose hypometabolism following neurotoxic lesions of the entorhinal and perirhinal cortices in the non-human primate as shown by PET. Implications for Alzheimer's disease. *Brain*. 1999; 122: 1519–31.
 96. **Attems J, Jellinger KA.** Only cerebral capillary amyloid angiopathy correlates with Alzheimer pathology—a pilot study. *Acta Neuropathol*. 2004; 107: 83–90.
 97. **Barten DM, Guss VL, Corsa JA, Loo A, Hansel SB, Zheng M, Munoz B, Srinivasan K, Wang B, Robertson BJ, Polson CT, Wang J, Roberts SB, Hendrick JP, Anderson JJ, Loy JK, Denton R, Verdoorn TA, Smith DW, Felsenstein KM.** Dynamics of {beta}-amyloid reductions in brain, cerebrospinal fluid, and plasma of {beta}-amyloid precursor protein transgenic mice treated with a {gamma}-secretase inhibitor. *J Pharmacol Exp Ther*. 2005; 312: 635–43.
 98. **John V.** Human beta-secretase (BACE) and BACE inhibitors: progress report. *Curr Top Med Chem*. 2006; 6: 569–78.
 99. **Vassar R, Bennett BD, Babu-Khan S, Kahn S, Mendiaz EA, Denis P, Teplow DB, Ross S, Amarante P, Loeloff R, Luo Y, Fisher S, Fuller J, Edenson S, Lile J, Jarosinski MA, Biere AL, Curran E, Burgess T, Louis JC, Collins F, Treanor J, Rogers G, Citron M.** Beta-secretase cleavage of Alzheimer's amyloid precursor protein by the transmembrane aspartic protease BACE. *Science*. 1999; 286: 735–41.
 100. **Fraering PC, Ye W, LaVoie MJ, Ostaszewski BL, Selkoe DJ, Wolfe MS.** Gamma-Secretase substrate selectivity can be modulated directly via interaction with a nucleotide-binding site. *J Biol Chem*. 2005; 280: 41987–96.
 101. **Morgan D, Diamond DM, Gottschall PE, Ugen KE, Dickey C, Hardy J, Duff K, Jantzen P, DiCarlo G, Wilcock D, Connor K, Hatcher J, Hope C, Gordon M, Arendash GW.** A beta peptide vaccination prevents memory loss in an animal model of Alzheimer's disease. *Nature*. 2000; 408: 982–5.
 102. **Schenk D, Barbour R, Dunn W, Gordon G, Grajeda H, Guido T, Hu K, Huang J, Johnson-Wood K, Khan K, Kholodenko D, Lee M, Liao Z, Lieberburg I, Motter R, Mutter L, Soriano F, Shopp G, Vasquez N, Vandever C, Walker S, Wogulis M, Yednock T, Games D, Seubert P.** Immunization with amyloid-beta attenuates Alzheimer-disease-like pathology in the PDAPP mouse. *Nature*. 1999; 400: 173–7.
 103. **Janus C, Pearson J, McLaurin J, Mathews PM, Jiang Y, Schmidt SD, Chishti MA, Horne P, Heslin D, French J, Mount HT, Nixon RA, Mercken M, Bergeron C, Fraser PE, St George-Hyslop P, Westaway D.** A beta peptide immunization reduces behavioural impairment and plaques in a model of Alzheimer's disease. *Nature*. 2000; 408: 979–82.
 104. **Wong GT, Manfra D, Poulet FM, Zhang Q, Josien H, Bara T, Engstrom L, Pinzon-Ortiz M, Fine JS, Lee K, Zhang L, Higgins GA, Parker EM.** Chronic treatment with the gamma-secretase inhibitor LY-411,575 inhibits beta-amyloid peptide production and alters lymphopoiesis and intestinal cell differentiation. *J Biol Chem*. 2004; 279: 12876–82.
 105. **Li T, Wen H, Brayton C, Laird FM, Ma G, Peng S, Placanica L, Wu TC, Crain BJ, Price DL, Eberhart CG, Wong PC.** Moderate reduction of gamma-secretase attenuates amyloid burden and limits mechanism-based liabilities. *J Neurosci*. 2007; 27: 10849–59.
 106. **McConlogue L, Buttini M, Anderson JP, Brigham EF, Chen KS, Freedman SB, Games D, Johnson-Wood K, Lee M, Zeller M, Liu W, Motter R, Sinha S.** Partial reduction of BACE1 has dramatic effects on Alzheimer plaque and synaptic pathology in APP Transgenic Mice. *J Biol Chem*. 2007; 282: 26326–34.

107. Laird FM, Cai H, Savonenko AV, Farah MH, He K, Melnikova T, Wen H, Chiang HC, Xu G, Koliatsos VE, Borchelt DR, Price DL, Lee HK, Wong PC. BACE1, a major determinant of selective vulnerability of the brain to amyloid-beta amyloidogenesis, is essential for cognitive, emotional, and synaptic functions. *J Neurosci.* 2005; 25: 11693–709.
108. Dominguez D, Tournoy J, Hartmann D, Huth T, Cryns K, Deforce S, Serneels L, Camacho IE, Marjaux E, Craessaerts K, Roebroek AJ, Schwake M, D'Hooge R, Bach P, Kalinke U, Moechars D, Alzheimer C, Reiss K, Saftig P, De Strooper B. Phenotypic and biochemical analyses of BACE1- and BACE2-deficient mice. *J Biol Chem.* 2005; 280: 30797–806.
109. Ma H, Lesne S, Kotilinek L, Steidl-Nichols JV, Sherman M, Younkin L, Younkin S, Forster C, Sergeant N, Delacourte A, Vassar R, Citron M, Kofuji P, Boland LM, Ashe KH. Involvement of beta-site APP cleaving enzyme 1 (BACE1) in amyloid precursor protein-mediated enhancement of memory and activity-dependent synaptic plasticity. *Proc Natl Acad Sci USA.* 2007; 104: 8167–72.
110. Willem M, Garratt AN, Novak B, Citron M, Kaufmann S, Rittger A, DeStrooper B, Saftig P, Birchmeier C, Haass C. Control of peripheral nerve myelination by the beta-secretase BACE1. *Science.* 2006; 314: 664–6.
111. Weggen S, Eriksen JL, Das P, Sagi SA, Wang R, Pietrzik CU, Findlay KA, Smith TE, Murphy MP, Bulter T, Kang DE, Marquez-Sterling N, Golde TE, Koo EH. A subset of NSAIDs lower amyloidogenic Abeta42 independently of cyclooxygenase activity. *Nature.* 2001; 414: 212–6.
112. Rozzini R, Ferrucci L, Losonczy K, Havlik RJ, Guralnik JM. Protective effect of chronic NSAID use on cognitive decline in older persons. *J Am Geriatr Soc.* 1996; 44: 1025–9.
113. Saag KG, Rubenstein LM, Chrischilles EA, Wallace RB. Nonsteroidal antiinflammatory drugs and cognitive decline in the elderly. *J Rheumatol.* 1995; 22: 2142–7.
114. Hanlon JT, Schmader KE, Landerman LR, Horner RD, Fillenbaum GG, Pieper CF, Wall WE Jr, Koronkowski MJ, Cohen HJ. Relation of prescription nonsteroidal antiinflammatory drug use to cognitive function among community-dwelling elderly. *Ann Epidemiol.* 1997; 7: 87–94.
115. Hayden KM, Zandi PP, Khachaturian AS, Szekely CA, Fotuhi M, Norton MC, Tschanz JT, Pieper CF, Corcoran C, Lyketsos CG, Breitner JC, Welsh-Bohmer KA. Does NSAID use modify cognitive trajectories in the elderly? The Cache County study. *Neurology.* 2007; 69: 275–82.
116. Rogers J, Kirby LC, Hempelman SR, Berry DL, McGeer PL, Kaszniak AW, Zalinski J, Cofield M, Mansukhani L, Willson P, Kogan F. Clinical trial of indomethacin in Alzheimer's disease. *Neurology.* 1993; 43: 1609–11.
117. Masliah E, Hansen L, Adame A, Crews L, Bard F, Lee C, Seubert P, Games D, Kirby L, Schenk D. Abeta vaccination effects on plaque pathology in the absence of encephalitis in Alzheimer disease. *Neurology.* 2005; 64: 129–31.
118. Nicoll JA, Wilkinson D, Holmes C, Steart P, Markham H, Weller RO. Neuropathology of human Alzheimer disease after immunization with amyloid-beta peptide: a case report. *Nat Med.* 2003; 9: 448–52.
119. Patton RL, Kalback WM, Esh CL, Kokjohn TA, Van Vickle GD, Luehrs DC, Kuo YM, Lopez J, Brune D, Ferrer I, Masliah E, Newel AJ, Beach TG, Castano EM, Roher AE. Amyloid-beta peptide remnants in AN-1792-immunized Alzheimer's disease patients: a biochemical analysis. *Am J Pathol.* 2006; 169: 1048–63.
120. Hock C, Konietzko U, Streffer JR, Tracy J, Signorell A, Muller-Tillmanns B, Lemke U, Henke K, Moritz E, Garcia E, Wollmer MA, Umbrecht D, de Quervain DJ, Hofmann M, Maddalena A, Papassotiropoulos A, Nitsch RM. Antibodies against beta-amyloid slow cognitive decline in Alzheimer's disease. *Neuron.* 2003; 38: 547–54.
121. Orgogozo JM, Gilman S, Dartigues JF, Laurent B, Puel M, Kirby LC, Jouanny P, Dubois B, Eisner L, Flitman S, Michel BF, Boada M, Frank A, Hock C. Subacute meningoencephalitis in a subset of patients with AD after Abeta42 immunization. *Neurology.* 2003; 61: 46–54.
122. Boche D, Nicoll JA. The role of the immune system in clearance of abeta from the brain. *Brain Pathol.* 2008; 18: 267–78.
123. Monsonego A, Imitola J, Petrovic S, Zota V, Nemirovsky A, Baron R, Fisher Y, Owens T, Weiner HL. Abeta-induced meningoencephalitis is IFN-gamma-dependent and is associated with T cell-dependent clearance of Abeta in a mouse model of Alzheimer's disease. *Proc Natl Acad Sci USA.* 2006; 103: 5048–53.
124. Pfeifer M, Boncristiano S, Bondolfi L, Stalder A, Deller T, Staufenbiel M, Mathews PM, Jucker M. Cerebral hemorrhage after passive anti-Abeta immunotherapy. *Science.* 2002; 298: 1379.
125. Bancher C, Braak H, Fischer P, Jellinger KA. Neuropathological staging of Alzheimer lesions and intellectual status in Alzheimer's and Parkinson's disease patients. *Neurosci Lett.* 1993; 162: 179–82.
126. Geula C, Nagykerly N, Nicholas A, Wu CK. Cholinergic neuronal and axonal abnormalities are present early in aging and in Alzheimer disease. *J Neuropathol Exp Neurol.* 2008; 67: 309–18.
127. Rub U, Del Tredici K, Schultz C, Thal DR, Braak E, Braak H. The evolution of Alzheimer's disease-related cytoskeletal pathology in the human raphe nuclei. *Neuropathol Appl Neurobiol.* 2000; 26: 553–67.
128. Ohm TG, Muller H, Braak H, Bohl J. Close-meshed prevalence rates of different stages as a tool to uncover the rate of Alzheimer's disease-related neurofibrillary changes. *Neuroscience.* 1995; 64: 209–17.
129. Klunk WE, Engler H, Nordberg A, Wang Y, Blomqvist G, Holt DP, Bergstrom M, Savitcheva I, Huang GF, Estrada S, Ausen B, Debnath ML, Barletta J, Price JC, Sandell J, Lopresti BJ, Wall A, Koivisto P, Antoni G, Mathis CA, Langstrom B. Imaging brain amyloid in Alzheimer's disease with Pittsburgh Compound-B. *Ann Neurol.* 2004; 55: 306–19.
130. Verhoeff NP, Wilson AA, Takeshita S, Trop L, Hussey D, Singh K, Kung HF, Kung MP, Houle S. *In vivo* imaging of Alzheimer disease beta-amyloid with [11C]SB-13 PET. *Am J Geriatr Psychiatry.* 2004; 12: 584–95.
131. Shoghi-Jadid K, Small GW, Agdeppa ED, Kepe V, Ercoli LM, Siddarth P, Read S, Satyamurthy N, Petric A, Huang SC, Barrio JR. Localization of neurofibrillary tangles and beta-amyloid plaques in the brains of living patients with Alzheimer disease. *Am J Geriatr Psychiatry.* 2002; 10: 24–35.
132. Small GW, Kepe V, Ercoli LM, Siddarth P, Bookheimer SY, Miller KJ, Lavretsky H, Burggren AC, Cole GM, Vinters HV, Thompson PM, Huang SC, Satyamurthy N, Phelps ME, Barrio JR. PET of brain amyloid and tau in mild cognitive impairment. *N Engl J Med.* 2006; 355: 2652–63.

133. Engler H, Forsberg A, Almkvist O, Blomquist G, Larsson E, Savitcheva I, Wall A, Ringheim A, Langstrom B, Nordberg A. Two-year follow-up of amyloid deposition in patients with Alzheimer's disease. *Brain*. 2006; 129: 2856–66.
134. Ikonomic MD, Klunk WE, Abrahamson EE, Mathis CA, Price JC, Tsopelas ND, Lopresti BJ, Ziolk S, Bi W, Paljug WR, Debnath ML, Hope CE, Isanski BA, Hamilton RL, Dekosky ST. Post-mortem correlates of *in vivo* PIB-PET amyloid imaging in a typical case of Alzheimer's disease. *Brain*. 2008: 1630–45.
135. Lockhart A, Lamb JR, Osredkar T, Sue LI, Joyce JN, Ye L, Libri V, Leppert D, Beach TG. PIB is a non-specific imaging marker of amyloid-beta (Aβ) peptide-related cerebral amyloidosis. *Brain*. 2007; 130: 2607–15.
136. Mathis CA, Wang Y, Holt DP, Huang GF, Debnath ML, Klunk WE. Synthesis and evaluation of 11C-labeled 6-substituted 2-arylbenzothiazoles as amyloid imaging agents. *J Med Chem*. 2003; 46: 2740–54.
137. Papassotiropoulos A, Fountoulakis M, Dunckley T, Stephan DA, Reiman EM. Genetics, transcriptomics, and proteomics of Alzheimer's disease. *J Clin Psychiatry*. 2006; 67: 652–70.
138. Bertram L, Tanzi RE. The genetic epidemiology of neurodegenerative disease. *J Clin Invest*. 2005; 115: 1449–57.
139. St George-Hyslop P, Haines J, Rogaev E, Mortilla M, Vaula G, Pericak-Vance M, Foncin JF, Montesi M, Bruni A, Sorbi S, Rainero I, Pinessi L, Pollen D, Polinsky R, Nee L, Kennedy J, Macciardi F, Rogaeva E, Liang Y, Alexandrova N, Lukiw W, Schlumpf K, Tanzi R, Tsuda T, Farrer L, Cantu J-M, Duara R, Amaducci L, Bergamini L, Gusella J, Roses A, Crapper McLachlan D. Genetic evidence for a novel familial Alzheimer's disease locus on chromosome 14. *Nat Genet*. 1992; 2: 330–4.
140. St George-Hyslop PH, Tanzi RE, Polinsky RJ, Haines JL, Nee L, Watkins PC, Myers RH, Feldman RG, Pollen D, Drachman D, Growdon J, Bruni A, Foncin JF, Salmon D, Frommelt P, Amaducci L, Sorbi S, Piacentini S, Stewart GD, Hobbs WJ, Conneally PM, Gusella JF. The genetic defect causing familial Alzheimer's disease maps on chromosome 21. *Science*. 1987; 235: 885–90.
141. Corder EH, Saunders AM, Strittmatter WJ, Schmechel DE, Gaskell PC, Small GW, Roses AD, Haines JL, Pericak-Vance MA. Gene dose of apolipoprotein E type 4 allele and the risk of Alzheimer's disease in late onset families. *Science*. 1993; 261: 921–3.
142. Goate A, Chartier-Harlin MC, Mullan M, Brown J, Crawford F, Fidani L, Giuffra L, Haynes A, Irving N, James L, Mant R, Newton P, Rooke K, Roques P, Talbot C, Pericak-Vance M, Roses A, Williamson R, Rossor M, Owen M, Hardy J. Segregation of a missense mutation in the amyloid precursor protein gene with familial Alzheimer's disease. *Nature*. 1991; 349: 704–6.
143. Levy-Lahad E, Wasco W, Poorkaj P, Romano DM, Oshima J, Pettingell WH, Yu CE, Jondro PD, Schmidt SD, Wang K, Crowley AC, Fu Y-H, Guenette SY, Galas D, Nemens E, Wijsman EM, Bird TD, Schellenberg, GD, Tanzi RE. Candidate gene for the chromosome 1 familial Alzheimer's disease locus. *Science*. 1995; 269: 973–7.
144. Rogaev EI, Sherrington R, Rogaeva EA, Levesque G, Ikeda M, Liang Y, Chi H, Lin C, Holman K, Tsuda T, Rogaev EI, Sherrington R, Rogaeva EA, Levesque G, Ikeda M, Liang Y, Chi H, Lin C, Holman K, Tsuda J, Mar L, Sorbi S, Nacmias B, Piacentini S, Amaducci L, Chumakov I, Cohen D, Lannfelt C, Fraser PE, Rommens JM, St George-Hyslop P. Familial Alzheimer's disease in kindreds with missense mutations in a gene on chromosome 1 related to the Alzheimer's disease type 3 gene. *Nature*. 1995; 376: 775–8.
145. Sherrington R, Rogaev EI, Liang Y, Rogaeva EA, Levesque G, Ikeda M, Chi H, Lin C, Li G, Holman K, Tsuda T, Mar L, Foncin JF, Bruni AC, Montesi MP, Sorbi S, Rainero I, Pinessi C, Nee L, Chimakov I, Pollen D, Brookes A, Saneav P, Polinsky RJ, Wasco W, Da Silva HAR, Haines JL, Pericak-Vance MA, Tanzi RE, Roses AD, Fraser PE, Rommens JM, St George-Hyslop PH. Cloning of a gene bearing missense mutations in early-onset familial Alzheimer's disease. *Nature*. 1995; 375: 754–60.
146. Bertram L, Tanzi R. Genetics of Alzheimer's disease. In: Dickson D, editor. Neurodegeneration: the molecular pathology of dementia. Basel: ISN Neuropath Press; 2003. pp. 40–6.
147. Schmechel DE, Saunders AM, Strittmatter WJ, Crain BJ, Hulette CM, Joo SH, Pericak-Vance MA, Goldgaber D, Roses AD. Increased amyloid beta-peptide deposition in cerebral cortex as a consequence of apolipoprotein E genotype in late-onset Alzheimer disease. *Proc Natl Acad Sci USA*. 1993; 90: 9649–53.
148. Strittmatter WJ, Saunders AM, Schmechel D, Pericak-Vance M, Enghild J, Salvesen GS, Roses AD. Apolipoprotein E: high-avidity binding to beta-amyloid and increased frequency of type 4 allele in late-onset familial Alzheimer disease. *Proc Natl Acad Sci USA*. 1993; 90: 1977–81.
149. Zubenko GS, Stiffler S, Stabler S, Kopp U, Hughes HB, Cohen BM, Moosy J. Association of the apolipoprotein E epsilon 4 allele with clinical subtypes of autopsy-confirmed Alzheimer's disease. *Am J Med Genet*. 1994; 54: 199–205.
150. Knopman D. Alzheimer type dementia. In: Dickson D, editor. Neurodegeneration: the molecular pathology of dementia and movement disorders. Basel: ISN Neuropath Press; 2003. pp. 24–39.
151. Ghebremedhin E, Schultz C, Thal DR, Rub U, Ohm TG, Braak E, Braak H. Gender and age modify the association between APOE and AD-related neuropathology. *Neurology*. 2001; 56: 1696–701.
152. Thal DR, Sassin I, Schultz C, Haass C, Braak E, Braak H. Fleecy amyloid deposits in the internal layers of the human entorhinal cortex are comprised of N-terminal truncated fragments of Aβ. *J Neuropathol Exp Neurol*. 1999; 58: 210–6.
153. Gellermann GP, Byrnes H, Striebinger A, Ullrich K, Mueller R, Hillen H, Barghorn S. A beta-globulomers are formed independently of the fibril pathway. *Neurobiol Dis*. 2008; 30: 212–20.
154. Yankner BA, Duffy LK, Kirschner DA. Neurotrophic and neurotoxic effects of amyloid beta protein: reversal by tachykinin neuropeptides. *Science*. 1990; 250: 279–82.
155. Lewis J, Dickson DW, Lin WL, Chisholm L, Corral A, Jones G, Yen SH, Sahara N, Skipper L, Yager D, Eckman C, Hardy J, Hutton M, McGowan E. Enhanced neurofibrillary degeneration in transgenic mice expressing mutant tau and APP. *Science*. 2001; 293: 1487–91.
156. Oddo S, Billings L, Kesslak JP, Cribbs DH, LaFerla FM. Aβ immunotherapy leads to clearance of early, but not late, hyperphosphorylated tau aggregates *via* the proteasome. *Neuron*. 2004; 43: 321–32.
157. Gotz J, Chen F, van Dorpe J, Nitsch RM. Formation of neurofibrillary tangles in P301 tau transgenic mice induced by Aβ42 fibrils. *Science*. 2001; 293: 1491–5.
158. Petersen RC, Doody R, Kurz A, Mohs RC, Morris JC, Rabins PV, Ritchie K, Rossor M, Thal L, Winblad B. Current concepts in mild cognitive impairment. *Arch Neurol*. 2001; 58: 1985–92.
159. Morris JC, Storandt M, Miller JP, McKeel DW, Price JL, Rubin EH, Berg L. Mild cognitive impairment represents early-stage Alzheimer disease. *Arch Neurol*. 2001; 58: 397–405.