

Mykhaylo BILYNSKY

DERIVATIONAL CHAINS WITH ADJECTIVAL AND PARTICIPIAL MOTIVATORS IN THE HISTORICAL THESAURUS OF ENGLISH DEVERBATIVES

Introduction

A derivational chain in the word-forming deverbial family consists of an adjective or participle originating from the parent verb and the ultimate adverb or noun that is motivated by the respective adjective or participle. A historical thesaurus of verbs contains chronologically restructured strings from a randomly selected present-day thesaurus (Laird 1985) on the basis of the earliest attestations of these strings' constituents as dated in the textual prototypes of the *Oxford English Dictionary* (Weiner 1999). Diachronic textual prototypes for the deverbial coinages were taken from the *OED* as well. A somewhat similar approach can be found in the publications on the *Historical Thesaurus of English* (cf. Kay, Wotherspoon 2002). Both secondary deverbatives and their immediate motivators make up historical near-synonymous strings of the common-category lexemes that are derivationally related to strings of synonymous verbs. The foundation for such a relatedness is the commonness of the root shared by the constituents of the respective chain.

In this paper we will concentrate on the heuristic possibilities provided by the application of corpus methodology to the problem of discovering verifiable parameters concerning the extent of (dis)similarity of the diachronic formation of the constituents' sequence in the string of secondary deverbatives of a given onomasiological affiliation with the formation of the respective sequences in parent verbs as well as primary and secondary deverbatives. A sequential reconstruction of different sections of the thesaurus of deverbial families is conducive to the study of such relevant issues of historical onomasiology as re-categorization of the vocabulary over time and the evolution of the derivational structure of semantic spaces.

A typology of deverbal chains

One may distinguish between deverbal adjectives, present participles, passive modal adjectives and past participles. In the enumerated categories only those lexemes of the said status that reveal *OED* documented transformations into nouns and adverbs are considered. Likewise, only those verbs which give rise to the ultimate secondary coinages via an adjectival/participial motivator are relevant to the aim of the present study. In view of the homonymy of some of the motivating verbs to nouns, we took into account only the textual prototypes of the respective primary and secondary coinages that are clearly related to the common-root verb. The dating of the *OED* textual prototypes covers the entire evolution of the English lexicon from the OE written records to quite recent sources. The constituents that have by now become archaic are marked with the asterisks placed after the respective lexeme.

The two participial motivators of secondary deverbal coinages make use of one suffix each. Adjectival motivators reveal a greater number of suffixes. To mark the derivational complexity of a coinage in comparison with the common-root base we use the transformation symbol “→”.

As the participle is basically a morphological form of the verb only those participles were included into the corpus that are lexicalized as separate lemmas in the *OED* or listed in the end of the respective glosses for verbs. The suffixes involved in such coinages are, respectively, *-ed* for the past participle (e.g. *abase* 1393 → *abased* 1611) and *-ing* for the present participle (e.g. *abide* 1000 → *abiding* 1377). When the historical variant of the present participle suffix *-nd* sporadically occurs in the earliest *OED* citation, e.g. 1300 Cursor M.11378 (Cott.) *the nest yeire foluand*, its dating is taken into account, but the very illustration of the participial coinage in the compiled corpus is the one with the suffix *-ing*, *follow* 950 → *following* 1300.

Deverbal adjectives are formed by means of the alternative suffixes and their allomorphic variants: *retreat* 1422 → *retreatant* 1880; *abduce* 1537 → *abducent* 1713; *complete* 1530 → *completory* 1659; *adjust* 1611 → *adjustive* 1883; *bewail* 1300 → *bewailful* 1592; *fester* 1377 → *festerous* 1854; *flap* 1320 → *flappy* 1598. Derivatives with morphemic complications, e.g. *ive/-ative*, *-ous/-itious*, are taken for the main suffix coinages, here, respectively, *-ive* and *-ous*, e.g. *think* 888 → *thinkative** 1662, *traject* 1624 → *trajectitious* 1656. Passive modal adjectives are formed by means of the suffix *-able*, e.g. *alter* 1374 → *alterable* 1526, or its allomorphic variant *-ible*, e.g. *comprehend* 1340 → *comprehensible* 1814. Besides the mentioned cases of suffix variance in adjectives, deverbal adjectives in *-ive* and passive modal adjectives in *-able* and *-ible* employ alternative suffixes *-ity* and *-ness* for their secondary nouns, e.g. *additivity* 1908, *alliterativeness* 1818; *movability* 1374, *bowableness* 1475; *accendibility* 1859, *conducibleness* 1599.

When one and the same verb produced coinages with the help of variant suffixes the older one was taken into account while filling in the respective electronic lattice slot in the developed framework, e.g. *prevent* 1432 → *preventable* 1640 / *preventible* 1850, *adopt* 1548 → *adoptive* 1430 / *adoptant** 1671; *desire* 1230 → *desirous* 1300 / *desirant** 1415; *beguile* 1225 → *beguulous** 1483 / *beguileful* 1530. The same principle was applied to suffix multiplicity with more than two formatives, e.g. *infest* 1477 → *infestive** 1563 / *infestant** 1589 / *infestuous* 1593.

A chain within the common-root deverbal family demonstrates a growth in the word-forming complexity from the verb to a primary and then secondary deverbal coinage. Eight types of deverbal chains can be singled out. In the examples downloaded from the corpus, with the help of the developed software, coinages are labelled with the bracketed numbers of the respective slots (d_5 – d_{16}) from the aggregate derivational structure of the deverbal word-forming families, in which the first four categories are allotted to primary deverbal nouns that do not figure in this study.

When there was suffix variance in secondary derivatives and/or their motivating adjectives the older suffix of the common-root coinages was taken into account in either slot. The quantitative outcome of the queries given in brackets after minimal random exemplification stand for the filled in slots of the electronic lattice: 1) verb → adjective (d_5) → adverb (d_9): *accord* 1123 → *accordant* 1315(5) → *accordantly* 1400(9); *annoy* 1250 → *annoyous** 1340(5) → *annoyously** 1374(9); *express* 1382 → *expressive* 1400(5) → *expressively* 1627(9); *fear* 1000 → *fearful* 1340(5) → *fearfully* 1526(9); *imprecate* 1613 → *imprecatory* 1587(5) → *imprecatorily* 1874(9); *incandesce* 1874 → *incandescent* 1794(5) → *incandescently* 1803(9) ... [493 attestations]; 2) verb → adjective (d_5) → noun (d_{10}): *urge* 1560 → *urgent* 1496(5) → *urgency* 1598(10); *talk* 1205 → *talkative* 1432(5) → *talkativeness* 1609(10); *twist* 1340 → *twisty* 1857(5) → *twistiness* 1904(10); *teem* 700 → *teemful* 1755(5) → *teemfulness* 1855(10); *impend** 1486 → *impending** 1623(5) → *impendingness** 1727(10) ... [341 attestations]; 3) verb → present participle (d_6) → adverb (d_{11}): *adore* 1305 → *adoring* 1652(6) → *adoringly* 1824(11) ... [1,407 attestations]; 4) verb → present participle (d_6) → noun (d_{12}): *rattle* 1330 → *rattling* 1398(6) → *rattlingness* 1869(12) ... [284 attestations]; 5) verb → passive modal adjective (d_7) → adverb (d_{13}): *impute* 1375 → *imputable* 1626(7) → *imputably* 1710(13); *apprehend* 1398 → *apprehensible* 1631(7) → *apprehensibly* 1672(13) ... [259 attestations]; 6) verb → passive modal adjective (d_7) → noun (d_{14}): *accend** 1432 → *accendible* 1630(7) → *accendibility* 1859(14); *limit* 1380 → *limitable* 1581(7) → *limitableness* 1644(14); *review* 1576 → *reviewable* 1846(7) → *reviewability* 1975(14) ... [629 attestations]; 7) verb → past participle (d_8) → adverb (d_{15}): *fade* 1340 → *faded* 1580(8) → *fadedly* 1899(15) ... [450 attestations]; 8) verb → past participle (d_8)

→ noun (d₁₆): *strain* 1300 → *strained* 1400(8) → *strainedness* 1639(16)... [423 attestations].

Not infrequently, both the secondary adverb and noun share a common-root adjectival or participial motivator: *fret* 1000 → *fretful* 1593(5) → *fretfully* 1789(9), *fretfulness* 1615(10) ... [253 attestations]; *sleep* 825 → *sleeping* 1300(6) → *sleepingly* 1638(11), *sleepingness** 1398(12)... [251 attestations]; *allow* 1300 → *allowable* 1393(7) → *allowably* 1588(13), *allowableness* 1692(14) ... [211 attestations]; *resolve* 1374 → *resolved* 1497(8) → *resolvedly* 1595 (15), *resolvedness* 1611(16) ... [230 attestations]. Here, a ‘single verb → adjective/participle’ pair gets finalized in two part-of-speech branches, otherwise known as steps of word-formation, manifested in two derivational chains.

On the basis of an earlier attestation, two rival suffixes can find their way to the position of deverbally derived adjective and its secondary coinage. In this case the derivational chain is suffix heterogeneous as we take into account an older chronological manifestation of the respective categorial slots, e.g. *fulgurate* 1677 → *fulgurous* 1616(5) / *fulgurant* 1647 (5) → *fulgurantly* 1873(9); *amuse* 1480 → *amusing** 1613(5) / *amusingly* 1728 → *amusingness* 1805(10); *admit* 1413 → *admittable* 1420(7) / *admissible* 1611 → *admissibly* 1818(13). Although the developed software allows one to attain suffix homogeneity in variant manifestations of the chains through substituting the oldest suffixal variant by the respective younger common-root functional counterpart in an historical onomasiological dictionary it seems natural to operate with the prototype fillings of the slots.

The historical thesauri of secondary deverbatives

Among the deverbatives of a specified categorial affiliation there existed relationships of near-synonymy on condition that their motivators, i.e. adjectives/participles and verbs, were constituents of the respective synonymic strings. To put it differently, the minimal condition for such derivationally reflected synonymy arises when there are at least two motivating constituents within the parent primary (verbal) and secondary (deverbally derived adjectival or participial) strings and each of them produces a coinage of the respective onomasiological category.

The historical string of secondary deverbatives consists of the constituents of the contemporary string that are placed in the chronological sequence according to the descending age of their *OED* first quotations. In this rearrangement the present-day dominant may chance to be the oldest constituent of the string. However, in a fair proportion of cases the oldest constituent that initiates the historical string is not the string’s present-day dominant. In cases of

identical (same year) dating of more than one of the string's constituents their ordinal sequence from the contemporary string was accepted as an unavoidable convention.

The constituents of the historical string of derivatives might lack among their motivating bases the dominant from the parent string. The reason for this lies in the derivational constraint imposed on the respective word-forming stem. Thus, the actual number of historical strings of deverbatives is larger than the number of coinages brought about by the dominants of the strings of motivating bases even though such derivatives may fail to concatenate strings of their own remaining the only coinages assigned to the respective synonymic strings of motivating adjectival or participial bases.

Another favourable factor for the appearance of strings in the historical derivational thesaurus of deverbatives is polysemy of the parent verbs. This peculiarity is responsible for the fact that one and the same verb gives rise to multiple strings of synonyms enhancing the probability of the construing of strings of primary and, consequently, if there are no constraints imposed on at least two of the latter ones, secondary derivatives. Owing to the discussed factors 2,246 diachronic deverbal chains make up 9,454 historical strings of secondary deverbatives. In the subsequent exemplification we separate the historical dominant of the string, which is its earliest component, from its other constituents with the symbol “ \subset ”.

In almost all onomasiological categories of secondary deverbatives slightly over a half of the strings ultimately corresponding to synonymous parent verbs have two constituents: d_9 (e.g. *despisanly** 1389 \subset *abhorrently* 1813); d_{10} (e.g. *indulgentness* 1727 \subset *permissiveness* 1837); d_{12} (e.g. *sparingness* 1579 \subset *forbearingness* 1855); d_{13} (e.g. *comprehensibly* 1755 \subset *understandably* 1921); d_{14} (e.g. *acceptableness* 1611 \subset *admissibility* 1778); d_{15} (e.g. *elevatedly* 1593 \subset *raisedly* 1611); d_{16} (e.g. *settledness* 1571 \subset *inhabitedness* 1900). As adverbs from the present participles are considerably more productive than other categories the quota of two-member strings in their thesaurus, e.g. *seemingly* 1483 \subset *appearingly** 1554, is lower than in the thesauri of other secondary deverbatives and the proportion of strings having more than two constituents is, respectively, higher.

One in five of the total number of strings have three constituents: d_9 (e.g. *sparefully** 1570 \subset *evasively* 1736, *forbearantly* 1855); d_{10} (e.g. *exclusiveness* 1730 \subset *suspensiveness* 1816, *exceptivity* 1870); d_{11} (e.g. *pleasingly* 1400 \subset *satisfyingly* 1643, *gratifyingly* 1822); d_{12} (e.g. *tauntingness* 1727 \subset *provokingness* 1840, *affrontingness* 1853); d_{13} (e.g. *perceivably* 1603 \subset *answerably** 1611, *remarkably* 1638); d_{14} (e.g. *separability* 1640 \subset *partibility* 1644, *dividableness* 1674); d_{15} (e.g. *approvedly* 1611 \subset *admiredly* 1637, *reputedly* 1687); d_{16} (e.g. *astonishedness* 1530 \subset *amazedness* 1557, *bewilderedness* 1847).

Somewhat more than one fourth of the strings in the studied onomasiological classes of secondary deverbatives, though with certain numeric fluctuations, exceed three constituents: d_9 (e.g. *urgently* 1548 \subset *obligatorily* 1563, *restrictively* 1610, *contractively** 1648, *coercively* 1661, *enforcively** 1880); d_{10} (e.g. *conversiveness* 1671 \subset *reformativeness* 1824, *accommodativeness* 1860, *adaptativeness* 1881, *commutativity* 1929, *substitutivity* 1940); d_{11} (e.g. *passingly* 1340 \subset *affirmingly* 1470, *confirmingly* 1603, *sustainingly* 1640, *encouragingly* 1646, *favouringly* 1829, *approvingly* 1837, *recognizingly* 1854, *supportingly* 1895); d_{12} (e.g. *beggingness** 1382 \subset *sneakingness* 1647, *fawningness* 1673, *cringingness* 1695, *beseekingness* 1863, *imploringness* 1863, *flatteringness* 1894); d_{13} (e.g. *notably* 1380 \subset *seeably** 1548, *observably* 1646, *markably** 1650, *viewably* 1680, *noticeably* 1855); d_{14} (e.g. *changeability* 1388 \subset *variableness* 1432, *reformableness** 1591, *alterableness* 1655, *adaptability* 1661, *modifiability* 1840, *transformability* 1875); d_{15} (e.g. *favouredly* 1530 \subset *acceptedly* 1599, *settledly** 1602, *pleasedly* 1651, *obligedly* 1659, *sustainedly* 1842, *gratifiedly* 1854).

When one and the same adjective/participle produces both an adverb and a noun, each of the latter may concatenate a synonymic string of its own though the constituents of such strings typically diverge, e.g. cf. d_{15} (*advisedly* 1375 \subset *directedly** 1539, *preparedly* 1606, *persuadedly* 1638, *informedly* 1642, *instructedly* 1873) and d_{16} (*advisedness* 1400 \subset *preparedness* 1590, *instructedness* 1628, *persuadedness* 1648, *suggestedness* 1802, *directedness* 1922, *informedness* 1946). Synonymous concatenation may, however, characterize only one of the two coinages engendered by a shared base. It happens when synonyms to that base fail to produce at least two secondary deverbatives of either adverbial or nounal type but do so in respect to the other type.

A framework for sequential comparisons of the strings' constituents

The identity of the constituents' succession in the formation of derivationally related lexemes with the succession of constituents within the parent string is optional. This succession in respect of the common-root constituents of the derived string can be altered owing to the differences in the transposition time that a derivative takes to appear after the attestation of its base. The said time can also be negative when a derivative is attested prior to its base. But even in the event of identical succession, the effect of the evenness of the two strings' formation can be upset owing to the differences in the width of the transposition time. Hence, the unevenness of cross-categorical expansion is an intrinsic feature of the formation of the diachronic thesaurus

of deverbal derivational families. For that matter it seems worthwhile comparing the expansion of pairs of strings over time.

A computerized procedure of building matrices of the compared strings' expansion similarity was developed (cf. Bilynsky 2006). The similarity/dissimilarity between the constituents chronology in two synonymic strings depends on their relative ordinal positions. The ordinal position of the constituent in the string is determined by the age of its first *OED* citation. In the case when the constituents reveal identically dated diachronic textual prototypes they are placed, as mentioned above, in the succession of the contemporary strings. The extent of similarity of the temporal expansion of two compared diachronic strings is represented in a matrix.

Example INDICATE

URGENTLY	1548	URGENT	1496
INDICATIVELY	1603	INDICATIVE	1530
DISTRIBUTIVELY	1626	DISTRIBUTIVE	1475
INSTRUCTIVELY	1631	INSTRUCTIVE	1611
EXECUTIVELY	1661	EXECUTIVE	1646
ADMONITORILY	1845	ADMONITORY	1594
REGULATIVELY	1854	REGULATIVE	1599
SUGGESTIVELY	1859	SUGGESTIVE	1631
CONDUCTIVELY	1870	CONDUCTIVE	1528

a) similarity of the strings of adverbs and their motivating adjectives

Example INDICATE

URGENTLY	1548	URGE	1560
INDICATIVELY	1603	INDICATE	1651
DISTRIBUTIVELY	1626	DISTRIBUTE	1460
INSTRUCTIVELY	1631	INSTRUCT	1477
EXECUTIVELY	1661	EXECUTE	1386
ADMONITORILY	1845	ADMONISH	1325
REGULATIVELY	1854	REGULATE	1630
SUGGESTIVELY	1859	SUGGEST	1526
CONDUCTIVELY	1870	CONDUCT	1400

b) similarity of the strings of adverbs and their motivating verbs

Figure 1. Exemplification of the cross-tier matrices of temporal expansion similarity for derived adverbs.

The similarity is marked positively (pluses in the matrix squares) when the ordinal number the *i*-th constituent of the string placed in the matrix column (left-hand side lists in *Figures 1* and *2*) is larger than the ordinal number(s) of the constituent(s) from the string in the matrix row (right-hand side lists in *Figures 1* and *2*) located leftwards of its own common-root counterpart and, conversely, when the ordinal number of an arbitrary constituent of the column string is smaller than the ordinal number(s) of the constituents(s) placed rightwards of the respective common-root counterpart from the matrix row string. When these conditions fail to come true the similarity of the expansion of strings' constituents is lacking (minuses in the matrix squares). Then one may safely talk about the sequential deficiency of the compared strings.

Example REALIZE

APPREHENDINGLY	1581	APPREHENSIBLY	1672
DISCERNINGLY	1634	DISCERNIBLY	1643
REALIZINGLY	1849	REALIZABLY	1885
RECOGNIZINGLY	1854	RECOGNIZABLY	1840

a) participial-adjectival direct cross-diathetical relatedness in adverbs

Example DIRECT

INSTRUCTEDNESS	1628	INSTRUCTIVENESS	1661
DIRECTEDNESS	1922	DIRECTIVENESS	1710
INFORMEDNESS	1946	INFORMATIVENESS	1924

b) participial-adjectival reverse cross-diathetical relatedness in nouns

Figure 2. Exemplification of the one-tier matrices of temporal expansion similarity for secondary deverbal strings of the common part-of-speech affiliation.

Comparing two strings of synonyms whose constituents are members of the common-root deverbal families involves several types of relationships. In respect towards secondary deverbatives these are first and foremost cross-tier comparisons between the said coinages and their motivating bases in the form of common-root adjectives/participles and verbs (see exemplification of this on *Figure 1*). Such comparisons can be presented in the form of binary matrices. One may also speak about non-motivating cross-tier comparisons

between a string of a given class of secondary deverbatives and a string of deverbals or a string of adjectives or participles whose categorial affiliation is different from that of the string that motivates the secondary deverbatives in question. Finally, there exist one-tier comparisons between two strings of secondary deverbatives with varied or identical status as regards their part-of-speech, derivational or diathetical, i.e. according to the grammatical category of voice of the verb in the respective paraphrase, affiliation (see exemplification of this on *Figure 2*).

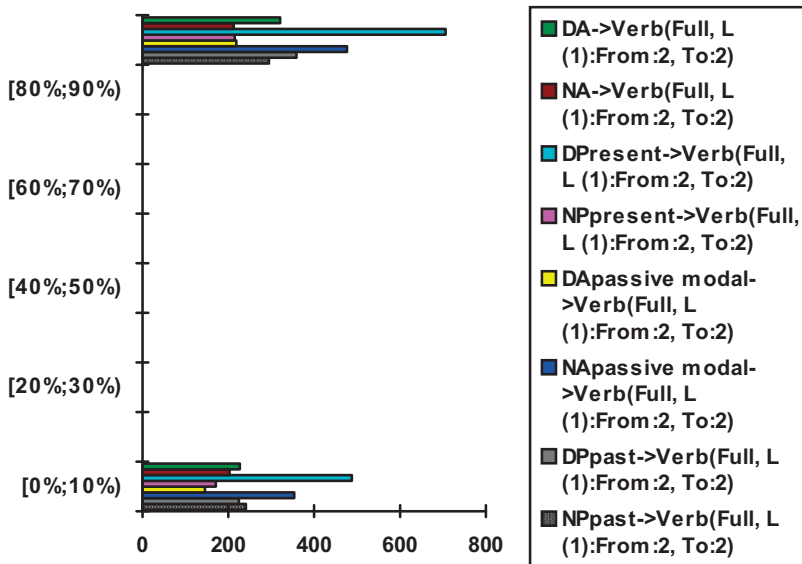
The placement of either of the compared strings in the position of the matrix row and column is arbitrary. Yet, the advantage of writing the string of coinages in the matrix column when the string of respective one-root derivational bases is in the matrix row lies in avoiding empty lines in the matrix. The constituents that are derivationally sterile drop out from the matrix column, which does not happen if their string is placed in the matrix row. This becomes possible owing to the fact that there are no secondary derivatives without the respective common-root constituents in the strings of their derivational bases. Certainly, this peculiarity does not hold true for cross-tier non-motivating relationships nor for one-tier comparisons in the thesauri of secondary deverbatives.

Possible queries

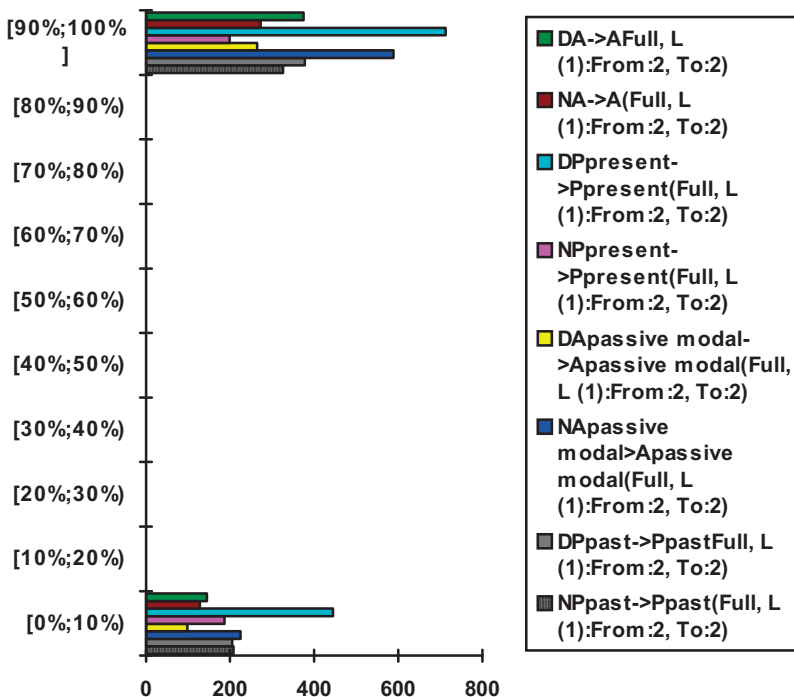
The construed historical strings of secondary deverbatives give rise to almost eighteen and a half thousand matrices, revealing the similarity of their expansion with that of the respective strings of common-root motivators. One may speak of comparable figures for the numbers of construed matrices revealing comparisons of temporal expansion in pairs of strings of secondary deverbatives themselves, and cross-tier comparisons of strings of secondary deverbatives with those of primary deverbals or their common-root non-motivating adjectives/participles. This vast empirical evidence can be analyzed along a number of different lines.

Assessing the affinity of the manifestation of specific features is graded, the respective objects being more or less akin rather than akin in principle. The initial attempt at generalization lies in distributing all the construed matrices for a given pair of strings according to the quotas of temporal expansion similarity minuses, or, eventually, pluses. The 10 per cent ranges of these quotas appear to fluctuate for the respective pairs of the compared strings allowing for looser or tighter groupings of classes of deverbals onomasiological categories.

In the visualization of the collected data (see the figures below) the horizontal axis shows the number of matrices and the vertical axis stands for the similarity ranges; the table specifies the compared strings with an optional length limitation on the string in the matrix column.

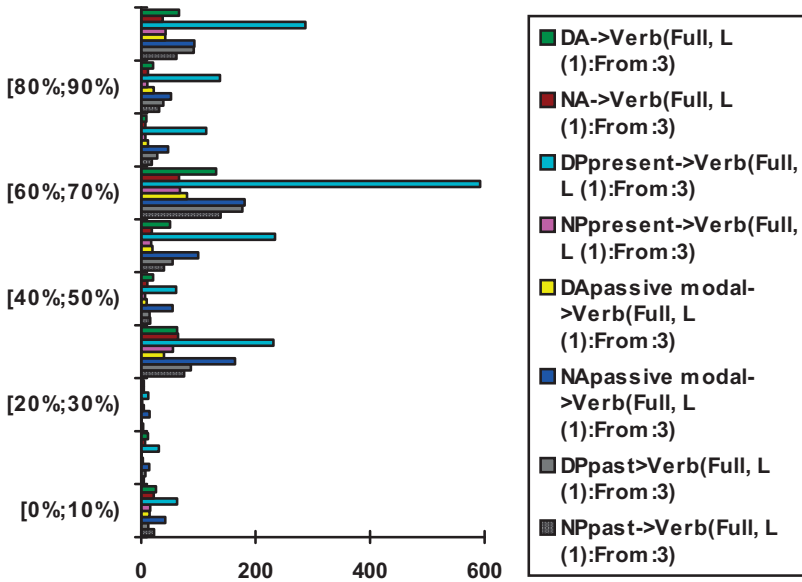


a) secondary deverbatives compared to verbs

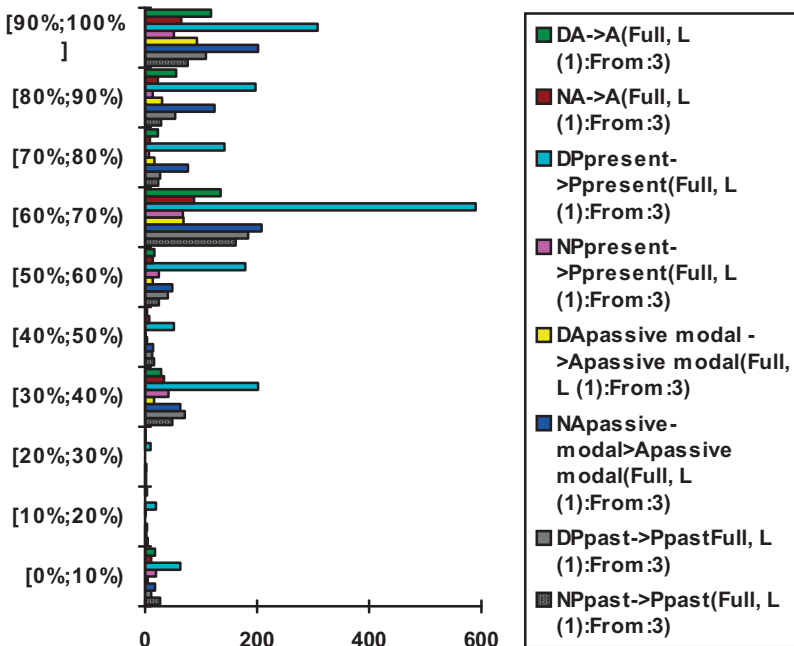


b) secondary deverbatives compared to adjectives/participles

Figure 3. Sequential similarity of two-member strings.



a) secondary deverbatives compared to verbs



b) secondary deverbatives compared to adjectives/participles

Figure 4. Sequential similarity of strings with more than two constituents.

Two-member strings revealing a derivationally motivating relationship yield identical or different expansion only (extreme upper and lower values on the vertical axis) whereas strings of larger lengths give a more versatile picture of sequential (dis)similarity distribution. Likewise, in two-member strings, which do not reveal motivating relations, extreme (dis)similarity values are the only ones possible, though there is no column-row conversion relationship of the strings' constituents. That is why there can be only two constituents in the matrix column when there are more than two constituents in the matrix row.

In strings of secondary deverbatives with just two constituents their sequential expansion is somewhat more similar to the expansion of the common-root motivating adjectives/participles than to the verbs (*Figure 3*). This observation also holds true for strings of secondary deverbatives that have more than two constituents. The upper half of the vertical axis on *Figure 4 (a)* is denser than on *Figure 4 (b)*. This is in line with the assessment of sequential similarity of the string's constituents expansion over time as an adaptation process that is more likely to arise in conditions of temporal and structural-semantic proximity than distance.

The compared strings of adverbs are generally longer than strings of nouns. Hence, the medium values of similarity in *Figure 5* occur more often than on *Figure 6*. As the extreme values of (dis)similarity of these classes of strings are roughly proportional repetition of sequential logic in the expansion of strings of adverbs generally occurs more often than in strings of nouns.

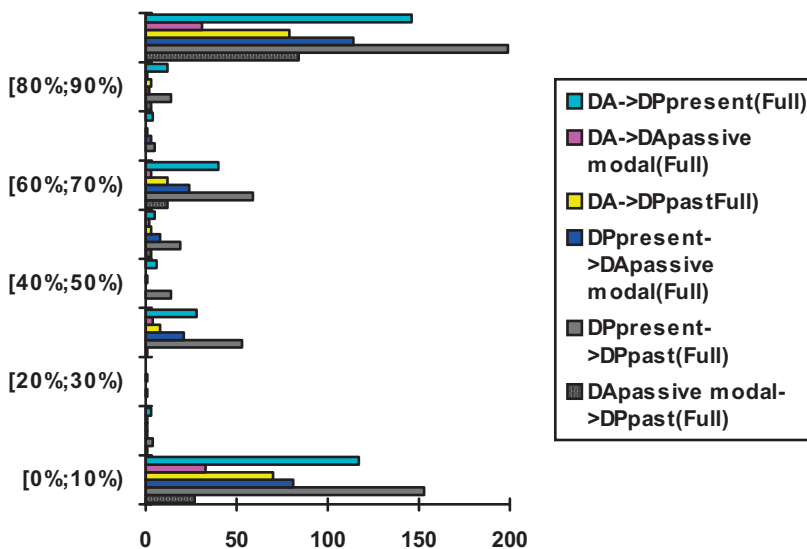


Figure 5. Sequential similarity of strings of adverbs.

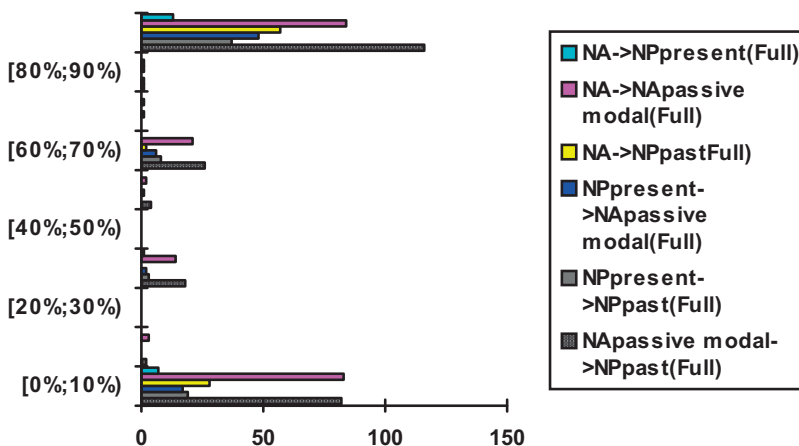


Figure 6. Sequential similarity of strings of nouns.

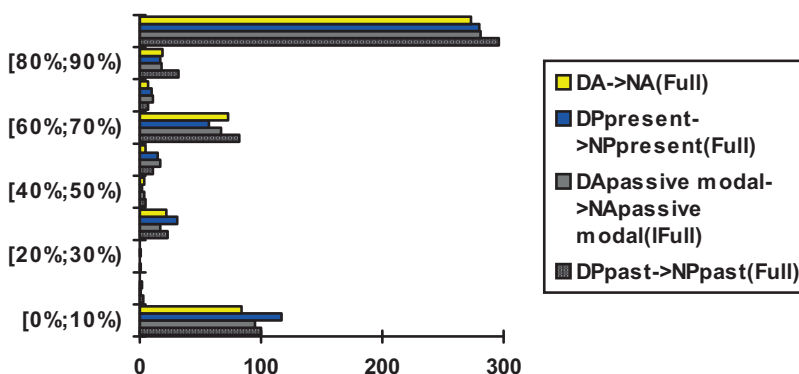
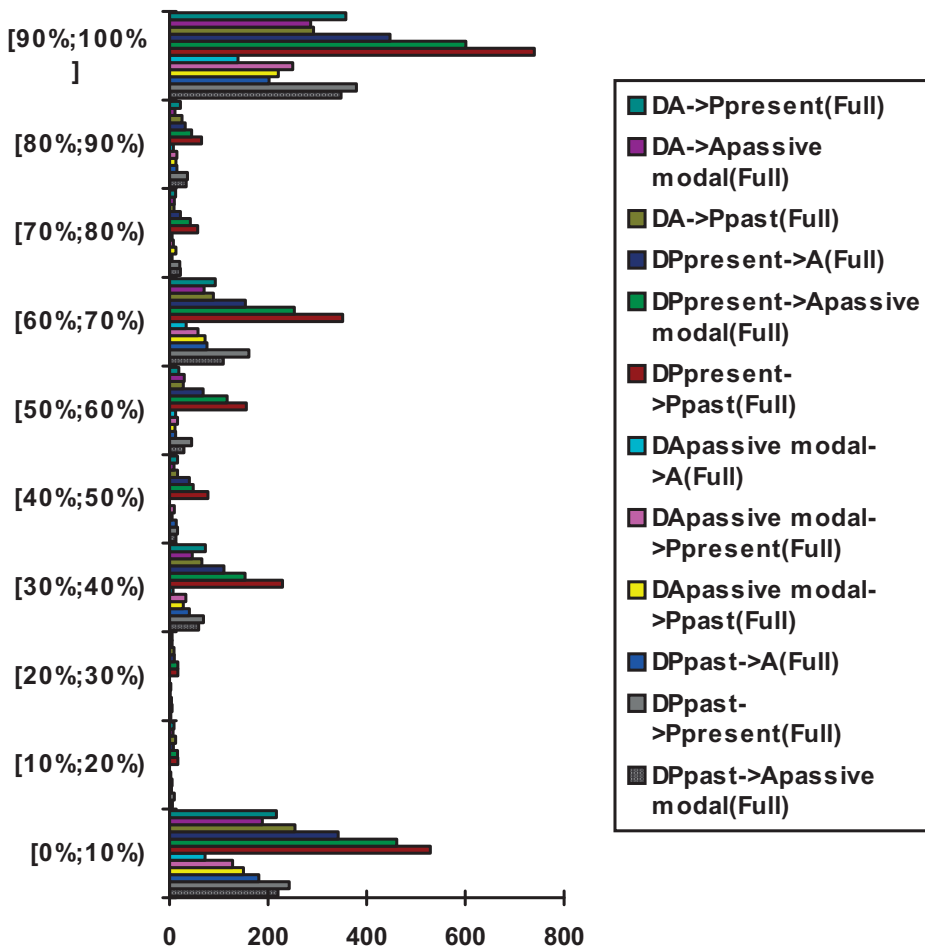


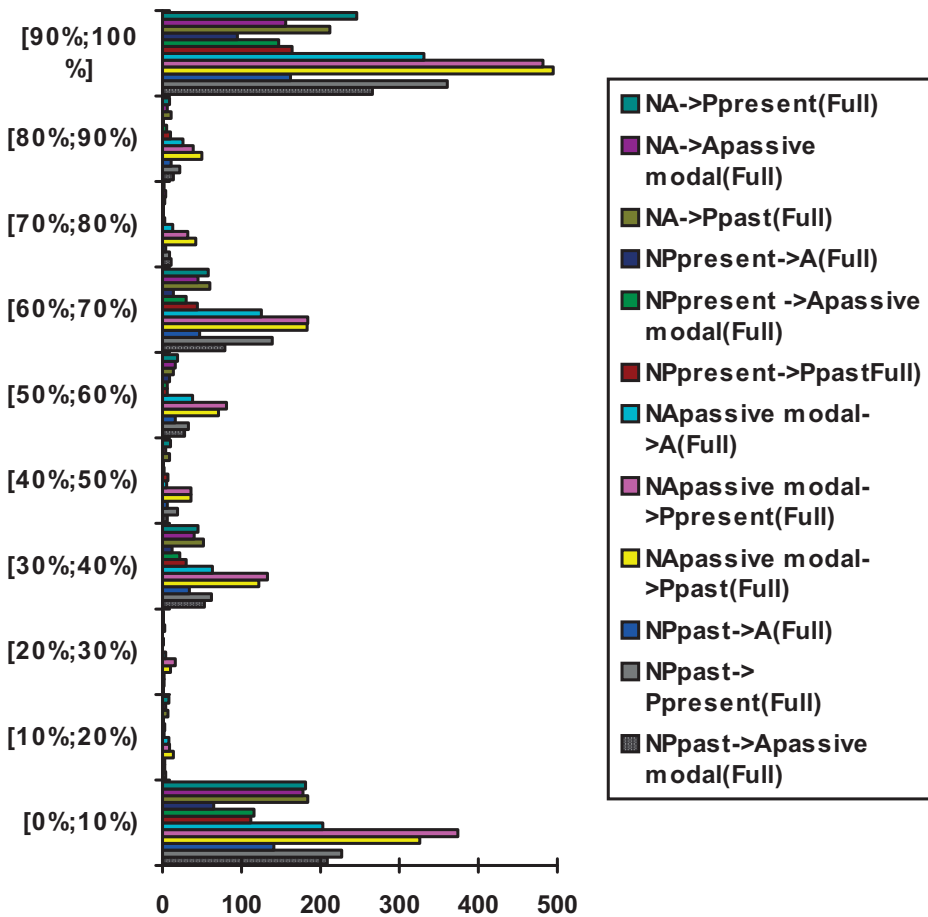
Figure 7. Sequential similarity of strings of adverbs and nouns sharing common adjectival/participial motivators.

Secondary adverbs and nouns tend to show almost identical behaviour as regards the repetition of sequential logic revealed by the strings of their motivating and non-motivating common-root adjectives and participles with the exception of specific instances of re-categorization (cf. the numbers of matrices in the first two categories on *Figure 7* as well as categories 4 and 5 on *Figures 8* (a) and categories 8 and 9 on *Figure 8* (b)). A similar disparity is visible between all categories on *Figure 5* and their counterparts on *Figure 6*.

It is also possible to search for more subtle approaches to the issue of the expansion of synonyms over time on the basis of the values of mean imitative logic for strings of specific lengths. It appears that such values will be accessible in terms of the absolute age differentials between the very datings of the *OED* textual prototypes.



a) strings of adverbs and non-motivating adjectives/participles



b) strings of nouns and non-motivating adjectives/participles

Figure 8. Sequential similarity of the expansion of strings of secondary deverbatives and strings of non-motivation common-root adjectives/participles.

Concluding remarks

It is of value to note that the framework developed here may be applied to multiple stratification of the verbal and/or deverbal lexicon along chronological periods, etymological origin, thematic affiliation or otherwise determined

grounds. It is also open to testing by diachronically restructured evidence from compatible present-day thesauri as well as variant historical evidence from the *Middle English Dictionary*.

Combining the information from the OED with that contained in the lexicographic sources compiled according to the onomasiological tradition, the dictionaries of strings of synonyms being among them, is capable of opening up an integral area of diachronic semantic research. We have brought into this avenue the problem of word-forming re-categorization evinced in the derivationally reflected synonymy, as well as some possibilities of computer-aided quantitative lexicology, in particular the corpus format of data design, storage and recoverability, exemplary and/or exhaustive factual illustrations as well as visualization of distributions. It is beyond doubt that the approach developed here is but a single demonstration of the inexhaustible heuristic potential inherent in the earliest quotations corpus from the monumental Oxford English Dictionary.

References

- Bilynsky, M.** 2006. 'Getting a diachronic view on synonymy: Verbs and deverbatives' [in:] Ritt, N., H. Schendl, Ch Dalton-Puffer, D. Kastovsky (eds.). *Medieval English and Its Heritage, Structure, Meaning and Mechanisms of Change*. Frankfurt am Main, Berlin: Peter Lang, pp. 77–104.
- Kay, Ch. J. and I.A.W. Wotherspoon.** 2002. 'Turning the dictionary inside out: Some issues in the compilation of a historical thesaurus' [in:] Díaz Vera, J.E. (ed.). *A Changing World of Words. Studies in English Historical Lexicography, Lexicology and Semantics*. Amsterdam: Rodopi, pp. 109–135.
- Laird, Ch.** 1985. *Webster's New World Thesaurus*. Prepared by Ch.Laird, updated by W.D. Lutz. New York: Prentice Hall Press.
- Weiner, E. (ed).** 1999. *Oxford English Dictionary (OED)*. 2nd CD-Rom edition, version 3.0. Oxford: Oxford University Press.