

# Strangeness dynamics and transverse pressure in relativistic nucleus-nucleus collisions

E. L. Bratkovskaya, M. Bleicher, M. Reiter, S. Soff, and H. Stöcker  
*Institut für Theoretische Physik, J.W. Goethe Universität, 60054 Frankfurt, Germany*

M. van Leeuwen  
*NIKHEF, Amsterdam, Netherlands and  
 Lawrence Berkeley National Laboratory, Berkeley, CA 94720, USA*

S. A. Bass  
*Department of Physics, Duke University, Durham, NC 27708, USA and  
 RIKEN BNL Research Center, Brookhaven National Laboratory, Upton, NY 11973, USA*

W. Cassing  
*Institut für Theoretische Physik, Universität Giessen, 35392 Giessen, Germany*

We investigate hadron production as well as transverse hadron spectra from proton-proton, proton-nucleus and nucleus-nucleus collisions from 2 A·GeV to 21.3 A·TeV within two independent transport approaches (HSD and UrQMD) that are based on quark, diquark, string and hadronic degrees of freedom. The comparison to experimental data on transverse mass spectra from  $pp$ ,  $pA$  and C+C (or Si+Si) reactions shows the reliability of the transport models for light systems. For central Au+Au (Pb+Pb) collisions at bombarding energies above  $\sim 5$  A·GeV, furthermore, the measured  $K^\pm$  transverse mass spectra have a larger inverse slope parameter than expected from the default calculations. We investigate various scenarios to explore their potential effects on the  $K^\pm$  spectra. In particular the initial state Cronin effect is found to play a substantial role at top SPS and RHIC energies. However, the maximum in the  $K^+/\pi^+$  ratio at 20 to 30 A·GeV is missed by 40% and the approximately constant slope of the  $K^\pm$  spectra at SPS energies is not reproduced either. Our systematic analysis suggests that the additional pressure - as expected from lattice QCD calculations at finite quark chemical potential  $\mu_q$  and temperature  $T$ - should be generated by strong interactions in the early pre-hadronic/partonic phase of central Au+Au (Pb+Pb) collisions.

PACS numbers: 25.75.-q, 25.75.Dw, 25.75.Ld, 13.60.Le

## I. INTRODUCTION

The phase transition from partonic degrees of freedom (quarks and gluons) to interacting hadrons is a central topic of modern high-energy physics [1]. In order to understand the dynamics and relevant scales of this transition laboratory experiments under controlled conditions are presently performed with ultra-relativistic nucleus-nucleus collisions. Hadronic spectra and relative hadron abundances from these experiments reflect important aspects of the dynamics in the hot and dense zone formed in the early phase of the reaction. Here different quark flavors ( $u, d, s, c, b$ ) - as constituents of the final hadrons - provide valuable information on the early high density phase due to the substantial different mass scales for the light ( $u, d$ ), strange ( $s$ ) and charm ( $c$ ) or bottom ( $b$ ) quarks. Furthermore, as has been proposed early by Rafelski and Müller [2] in particular the strangeness degree of freedom might play an important role in distinguishing hadronic and partonic dynamics.

Lattice QCD calculations at vanishing quark chemical potential and finite temperature indicate critical energy densities for the formation of a quark-gluon plasma (QGP) of  $\sim 0.7\text{-}1$  GeV/fm<sup>3</sup> [3], which might already be achieved at Alternating Gradient Synchrotron (AGS) energies of  $\sim 10$  A·GeV for central Au+Au collisions

[4, 5, 6]. Moreover, the recent lattice QCD calculations at finite quark chemical potential  $\mu_q$  [7] show a rapid increase of the thermodynamic pressure  $P$  with temperature above the critical temperature  $T_c$  for a phase transition (or cross-over) to the QGP. The problem is how to relate these numbers to observables from nucleus-nucleus collisions. Estimates based on the Bjorken formula [8] for the energy density achieved in central Au+Au collisions suggest that the critical energy density for the formation of a QGP of  $\sim 0.7\text{-}1$  GeV/fm<sup>3</sup> is by far exceeded during a few fm/c in the initial phase of Au+Au collisions at Relativistic Heavy Ion Collider (RHIC) energies [1]. Accordingly, a phase transition (or cross-over) might already happen at much lower bombarding energies.

Experimentally, relativistic nucleus-nucleus collisions have been studied at beam energies from 0.1 to 2 A·GeV at the SchwerIonen-Synchrotron (SIS), from 2 to 11.6 A·GeV at the AGS and from 20 to 160 A·GeV at the Super Proton Synchrotron (SPS) [9, 10]. This program has been extended [1] at RHIC with Au+Au collisions at invariant energies  $\sqrt{s}$  from  $\sim 20$  to 200 GeV (equivalent energies in a fixed target experiment: 0.2 to 21.3 A·TeV).

Whereas many previous experimental studies have focused on longitudinal rapidity distributions for hadrons, the transverse mass (or momentum) spectra of hadrons are presently in the center of interest. On the one hand

a significant suppression of high transverse momentum hadrons in Au+Au collisions compared to  $pp$  is observed at RHIC energies of  $\sqrt{s} = 200$  GeV [11, 12, 13, 14]. This suppression is often attributed to the energy loss of highly energetic particles in a hot colored medium (QGP) [15, 16]. In fact, the recent observation by the PHENIX [12], STAR [13] and BRAHMS [14] collaborations, that a similar suppression is not observed in d+Au interactions at midrapidities at the same energy, supports this idea. On the other hand, the measured transverse mass ( $m_T = (p_T^2 + m^2)^{1/2}$ ) spectra of hadrons (heavier than pions)

$$\frac{1}{m_T} \frac{dN}{dm_T} \sim \exp\left(-\frac{m_T}{T}\right) \quad (1)$$

at AGS, SPS and RHIC energies show a substantial *hardening* in central Au+Au collisions relative to  $pp$  interactions (cf. [10, 17]). This hardening of the spectra (or increase of the inverse slope parameter  $T$  in (1)) for low transverse mass or momentum is commonly attributed to strong collective flow, which is absent in the respective  $pp$  or  $pA$  collisions.

The authors of [18] have proposed to interpret the approximately constant  $K^\pm$  slopes above  $\sim 30$  A·GeV – the ‘step’ – as an indication for a phase transition. This interpretation is also based on a rather sharp maximum in the  $K^+/\pi^+$  ratio at  $\sim 20$  to 30 A·GeV in central of Pb+Pb collisions (the ‘horn’ [18]). However, the present body of experimental data and our theoretical understanding does not allow for a stringent conclusion based only on the ‘step’ and ‘horn’ phenomena. In this paper we will address some further theoretical issues, but would like to point out that more experimental data, for example on collisions in the energy range of  $20 \leq \sqrt{s} \leq 200$  GeV and on weakly interacting hadrons, will be needed to clarify these issues from the experimental side.

We will demonstrate in this work, that neither the pressure needed to generate a large collective flow – to explain the hard slopes of the  $K^\pm$  spectra with a ‘plateau’ at SPS energies – nor the experimental sharp maximum in the  $K^+/\pi^+$  ratio at  $\sim 20$  to 30 A·GeV is produced in the present transport models by the interactions of hadrons in the expansion phase of the hadronic fireball. Some aspects of this work have been published in Refs. [19, 20] before; however, we here extend the previous studies to RHIC energies and consider a wide variety of dynamical scenarios. In particular we will explore two distinct effects: i) initial state Cronin enhancement and ii) heavy resonance formation on the transverse mass spectra of pions and kaons at all bombarding energies from lower AGS to RHIC energies.

In our studies we use two independent relativistic transport models that employ hadronic and string degrees of freedom, i.e. UrQMD [21, 22] and HSD [23, 24]. They take into account the formation and multiple rescattering of hadrons and thus dynamically describe the generation of pressure in the hadronic expansion phase. This involves also interactions of leading pre-

hadrons that contain a valence quark (antiquark) from a primary ‘hard’ collision (cf. Refs. [19, 25]). In the parton language, the two transport models employed do not include gluon degrees of freedom explicitly nor gluon-gluon and gluon-quark (antiquark) interactions. We will use these models to test, whether the description of nucleus-nucleus reactions in terms of pre-hadronic, hadronic and string degrees of freedom and their interactions is sufficient to explain the experimental data.

Our work is organized as follows: In Section II we briefly recall the ingredients of the HSD and UrQMD transport approaches and point out the extensions incorporated in UrQMD (versions 2.0 and 2.1). In Section III the calculated excitation functions for pions,  $K^\pm$  mesons and hyperons for central Au+Au (or Pb+Pb) collisions from 2 to 21300 A·GeV are shown (in comparison to the experimental data) as well as selected particle ratios. Section IV is devoted to transverse mass spectra of pions and  $K^\pm$  mesons from  $pp$  to  $pA$  and central  $AA$  reactions in the same energy range. In Section V we will discuss various alternative scenarios within the transport calculations to explore their sensitivity to the hadron transverse mass spectra. Section VI is devoted to a study of the ‘Cronin effect’ in central Au+Au collisions, which we attribute to a ‘pre-hadronic’ initial state scattering effect that also shows up in  $pA$  reactions. Section VII includes a comparison of the thermodynamic Lagrange parameters  $T$  and  $\mu_B$  extracted from the UrQMD transport model in the central overlap regime of Au+Au collisions with the experimental systematics on chemical freeze-out configurations in the  $T, \mu_B$  plane as well as recent lattice QCD results. Section VIII closes this study with a summary and discussion of open problems.

## II. TRANSPORT MODELS – HSD AND URQMD

We use two independent relativistic transport approaches for our study that employ hadronic and string degrees of freedom, i.e. UrQMD (Ultra-relativistic Quantum Molecular Dynamics) [21, 22] and HSD (Hadron-String Dynamics) [23, 24, 26] in order to obtain an estimate of systematic uncertainties within the transport models. Both approaches take into account the formation and decay of strings as well as the multiple rescattering of hadrons in the expansion phase. These models can be considered as appropriate descriptions at least for the final stage of an ultrarelativistic nucleus-nucleus collision, where the strongly interacting hadrons dominate. The open question is, however, if these transport models also incorporate the proper degrees of freedom in the very early phase of heavy-ion collisions. We stress that transport calculations allow for a systematic study of the change in the dynamics from elementary baryon-baryon or meson-baryon collisions to proton-nucleus reactions or from peripheral to central nucleus-nucleus collisions in a unique way without change in parameters. This is of central importance since the assumptions of thermal

and chemical equilibrium – as used in hydrodynamical or statistical models [27] – do not necessarily hold in all these reactions and the transport studies allow to explore the amount of (thermal or chemical) equilibrium reached [28, 29, 30].

The default UrQMD 1.3 transport approach [21, 22] includes all baryonic resonances up to masses of 2 GeV as well as mesonic resonances up to 1.9 GeV as tabulated by the Particle Data Group [31]. For hadronic continuum excitations a string model is used with meson formation times of the order of 1-2 fm/c depending on the momentum and energy of the created hadron. For the present study – and the particular aim to address also jet production and fragmentation at RHIC energies – we additionally have incorporated PYTHIA (v 6.1) [32] in UrQMD 1.3 similar to HSD. This novel and extended version we denote as UrQMD 2.0.

Moreover, to explore the physical consequences of higher mass states as implemented in the Relativistic-Quantum-Molecular-Dynamics model (RQMD) [33], we have introduced in UrQMD additional high mass resonances that are explicitly produced and propagated in *s-channel* processes with invariant masses up to  $\sqrt{s} < 3$  GeV. We do not assume these states to be excited in baryon-baryon collisions. In practical terms: If the mass of the produced mesonic or baryonic resonance is above  $\sim 2$  GeV<sup>1</sup>, i.e. in the continuum, the formed resonance state is not fragmented as a string object like in UrQMD 1.3 or UrQMD 2.0. We recall that a string of invariant mass  $2 \leq M \leq 3$  GeV essentially decays to a few pions, a vector meson + pions etc. Instead, this high mass state is treated as a quasi-particle that decays according to the branching ratios of the resonances with a mass of 1.9 to 2.0 GeV (as implemented in UrQMD). We recall that baryon resonances  $\sim 1.9$  GeV dominantly decay to the  $\pi + N$  channel and with some lower probability to the  $\rho(\omega) + N$  final state. In this way light meson emission is suppressed by about 25% compared to a string of the same invariant mass. We note, that this recipe is still in line with the available  $\pi p \rightarrow \pi X$  data on pion multiplicities. Furthermore, since the high mass resonances decay isotropically in their rest frame, this leads to an enhancement of transverse flow (cf. Section V.E). Furthermore, we use isotropic angular distributions for elastic meson-baryon interactions below  $\sqrt{s}_{mB} = 6$  GeV. In this work we will denote this scenario as UrQMD 2.1.

In the HSD approach nucleons,  $\Delta$ 's,  $N^*(1440)$ ,  $N^*(1535)$ ,  $\Lambda$ ,  $\Sigma$  and  $\Sigma^*$  hyperons,  $\Xi$ 's,  $\Xi^*$ 's and  $\Omega$ 's as well as their antiparticles are included on the baryonic side whereas the  $0^-$  and  $1^-$  octet states are included in the mesonic sector. Inelastic hadron-hadron collisions with energies above  $\sqrt{s} \simeq 2.6$  GeV are described by the FRITIOF model [34] (incorporating PYTHIA v 5.5 with JETSET v 7.3 for the production and fragmenta-

tion of jets [32]) whereas low energy hadron-hadron collisions are modeled in line with experimental cross sections [23, 24, 35].

Both transport approaches reproduce the nucleon-nucleon, meson-nucleon and meson-meson cross section data in a wide kinematic range [19, 21, 22]. Therefore, we expect that the 'hadronic' scattering mechanisms are sufficiently under control. However, in nucleus-nucleus reactions further elastic and inelastic processes on the parton level might occur that – beyond the interactions of 'leading' quarks/diquarks – are not included in the studies below. We mention that (pQCD-like) partonic scattering is incorporated e.g. in the multi-phase transport model (AMPT) [30], which is currently employed from upper SPS to RHIC energies, but is not suitable for lower energies.

### III. EXCITATION FUNCTIONS

Whereas the underlying concepts of the transport theoretical models are very similar, the actual realizations differ considerably. A systematic analysis of results from both models and experimental data for central nucleus-nucleus collisions from 2 to 160 A·GeV has shown that the 'longitudinal' rapidity distributions of protons, pions, kaons, antikaons and hyperons are quite similar in both models and in reasonable agreement with available data [19]. We here extend the latter studies to RHIC energies, but focus on total and midrapidity hadron yields as well as particle ratios. For completeness we include the results from Ref. [19] in Figs. 1-3.

#### A. Pion and strange particle yields

Figure 1 shows the excitation function of  $\pi^+$ ,  $\pi^-$ ,  $K^+$ ,  $K^-$  and  $\Lambda + \Sigma^0$  yields from 5% central (AGS energies, SPS at 160 A·GeV and at RHIC energies), 7% central (20, 30, 40 and 80 A·GeV), 10% central for  $\Lambda + \Sigma^0$  at 160 A·GeV Au+Au (AGS and RHIC) or Pb+Pb (SPS) collisions in comparison to the experimental data from Refs. [36, 37, 38] (AGS), [9, 39, 40, 41] (SPS) and [42, 43, 44] (RHIC) for midrapidity (left column) and rapidity integrated yields (right column). The solid lines with open squares show the results from HSD, the dashed lines with open triangles indicate the calculations with UrQMD 1.3 and the long dashed lines with crosses depict the UrQMD 2.1 results.

We note in passing, that the corrections to the pion and kaon yields due to the weak decay of resonances have not been included in our calculations in line with the experimental analysis of the NA49 Collaboration (cf. Refs. [9, 10]). However, the experimental subtraction of weak decays is problematic and might have an impact on the measured kaon to pion ratio as pointed out in Ref. [45]. This uncertainty has to be kept in mind throughout the following analysis.

<sup>1</sup> The explicit value depends on the type of resonance.

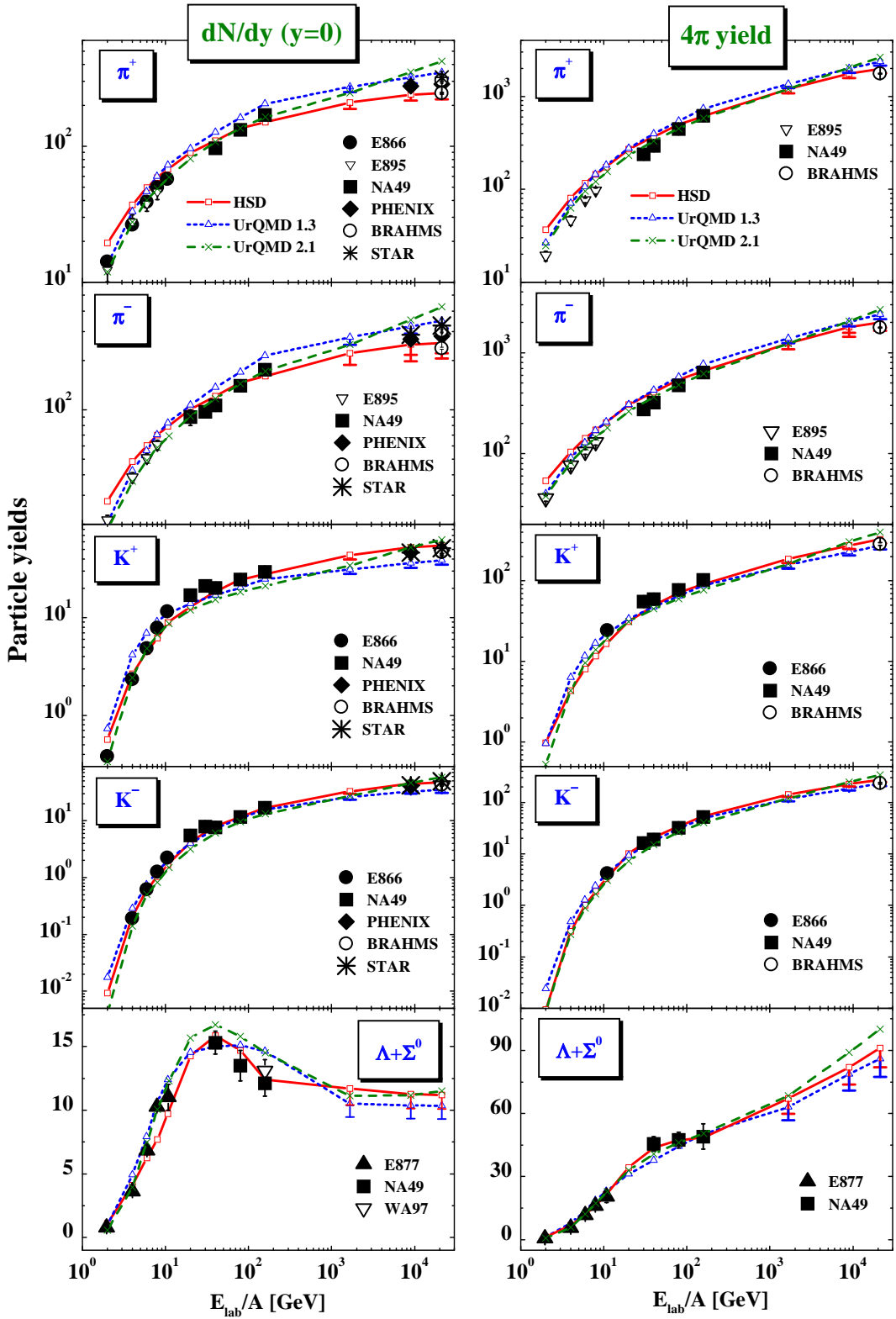


FIG. 1: (Color online) The excitation function of  $\pi^+$ ,  $\pi^-$ ,  $K^+$ ,  $K^-$  and  $\Lambda + \Sigma^0$  yields from 5% central (AGS energies, SPS at 160 A-GeV and at RHIC energies), 7% central (20, 30, 40 and 80 A-GeV), 10% central for  $\Lambda + \Sigma^0$  at 160 A-GeV Au+Au (AGS and RHIC) or Pb+Pb (SPS) collisions in comparison to the experimental data from Refs. [36, 37, 38] (AGS), [9, 39, 40, 41] (SPS) and [42, 43, 44] (RHIC) for midrapidity (left column) and rapidity integrated yields (right column). The solid lines with open squares show the results from HSD whereas the dashed lines with open triangles and the long dashed lines with crosses indicate the results from UrQMD 1.3 and UrQMD 2.1, respectively. The lower theoretical errorbars at RHIC energies correspond to the yields for 10% central events.

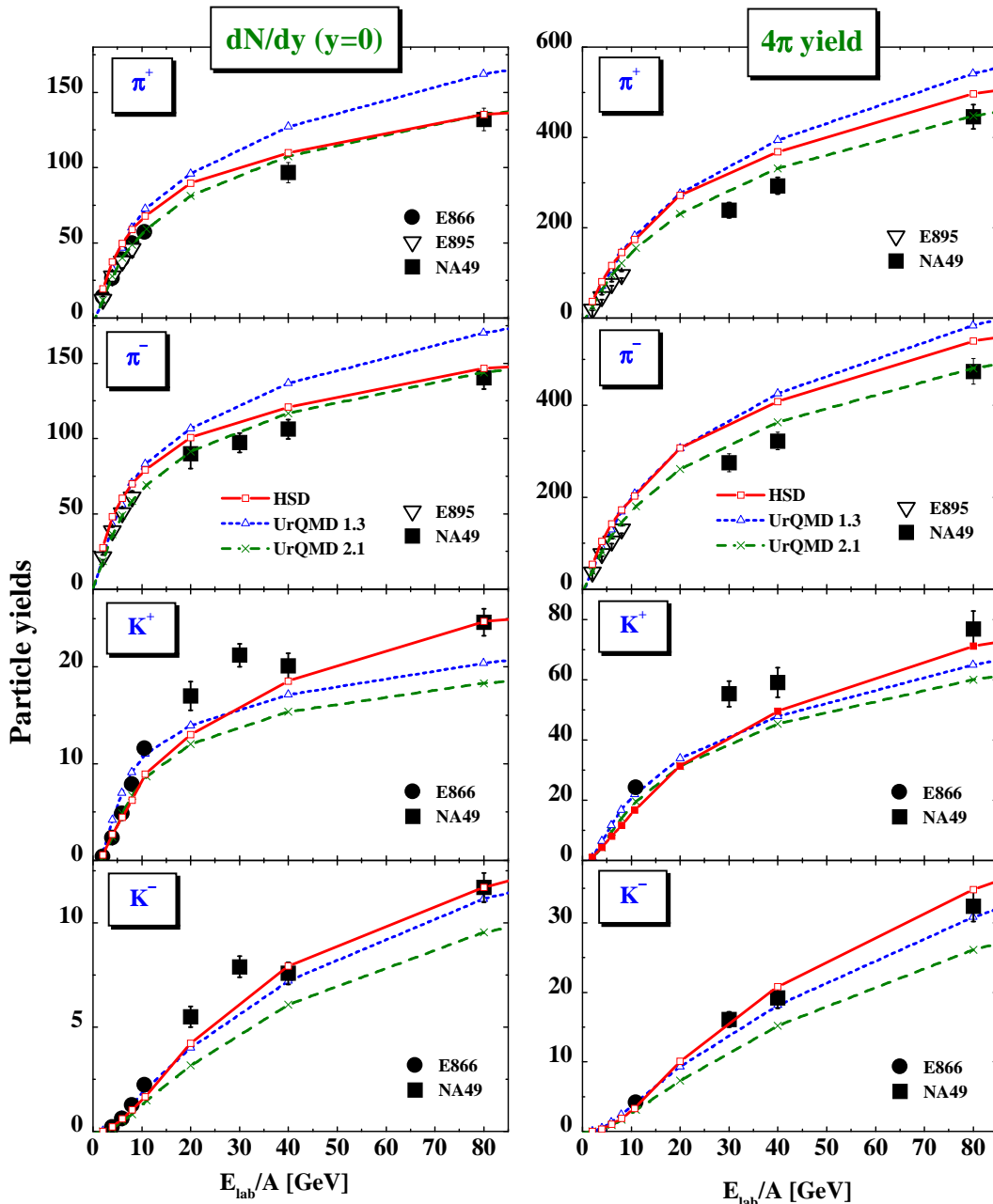


FIG. 2: (Color online) The excitation function of  $\pi^+$ ,  $\pi^-$ ,  $K^+$  and  $K^-$  mesons (as in Fig.1), but up to 80 A GeV on a linear scale.

As already demonstrated in Ref. [19] the agreement between the transport models HSD (solid lines) and UrQMD 1.3 (dashed lines) is rather good as well as with the data available. The exception are the pion yields at the highest AGS energy and lower SPS energies, which are overestimated by both approaches (cf. [19]). This is demonstrated in more detail in Fig. 2 where the  $\pi^\pm$  and  $K^\pm$  yields (as in Fig. 1) are displayed in the energy range up to 80 A GeV on a linear scale. The overestimation of the pion yields (in  $4\pi$ ) in this energy range is slightly more pronounced for UrQMD 1.3 than for HSD especially at the higher SPS energy. On the other hand,

both transport models fall slightly low in the  $K^+$  yields at 30 and 40 A GeV. The results from the novel version UrQMD 2.1 (long dashed lines) differ from UrQMD 1.3 essentially in the following aspect: The pion multiplicity at AGS and SPS energies is reduced by about 25% (cf. Section II) due to the specific decay scheme of higher mass resonances (and is now in better agreement with the data). On the other hand, UrQMD 2.1 gives a lower amount of kaons and especially antikaons (in  $4\pi$ ) than the 'default' HSD and UrQMD 1.3 approaches.

At RHIC energies the UrQMD 1.3 calculations show a  $\sim 30\%$  higher pion yield at midrapidity than HSD while

the differences between the  $4\pi$  integrated yields are of the order of 10%, both between the models and compared to the data. The implementation of higher mass states in UrQMD 2.1 (cf. Section II) – together with the jet production described by PYTHIA – leads to an overestimation of pions, kaons and hyperons at RHIC energies.

Note, that the maximum in the  $\Lambda + \Sigma^0$  yield at midrapidity (lower left part of Fig. 1) for  $\sim 30$  A·GeV is reproduced by both transport approaches. However, this maximum disappears in the  $4\pi$  integrated yields in line with the data (cf. lower right part of Fig. 1). Within the transport models the maximum in the  $\Lambda + \Sigma^0$  yield at midrapidity can be attributed to a large extent to a change from baryon dominated dynamics at AGS energies to meson dominated dynamics at the higher SPS energies.

### B. $K^+/\pi^+, K^-/\pi^-$ and $(\Lambda + \Sigma^0)/\pi$ ratios

In Fig. 3 we present the excitation function of the particle ratios  $K^+/\pi^+, K^-/\pi^-$  and  $(\Lambda + \Sigma^0)/\pi$  from 5% central (AGS energies, SPS at 160 A·GeV and at RHIC energies), 7% central (20, 30, 40 and 80 A·GeV), 10% central for  $\Lambda + \Sigma^0$  at 160 A·GeV Au+Au (AGS and RHIC) or Pb+Pb (SPS) collisions in comparison to the experimental data from Refs. [36, 37, 38] (AGS), [9, 39, 41?] (SPS) and [42, 43, 44] (RHIC) for midrapidity yields (left column) and rapidity integrated yields (right column). The solid lines with open squares show the results from HSD, the dashed lines with open triangles indicate the UrQMD 1.3 calculations whereas the long dashed lines with crosses correspond to the UrQMD 2.1 results. The deviations between the transport models and the data are most pronounced for the midrapidity ratios (left column) since the ratios are very sensitive to actual rapidity spectra. The  $K^+/\pi^+$  ratio in UrQMD 1.3 shows a maximum at  $\sim 8$  A·GeV and then drops to a roughly constant ratio of 0.12 at top SPS and RHIC energies. UrQMD 2.1 follows the results from UrQMD 1.3 at AGS and SPS energies but then increases slightly up to RHIC energies. In case of HSD a continuously rising ratio with bombarding energy is found for the midrapidity ratios. This rise up to the full RHIC energy is essentially due to an underestimation of the pion yield at midrapidity (cf. Fig. 1 in Ref. [48]). The  $4\pi$  ratio in HSD, which is approximately constant from top SPS to RHIC energies, is larger than the ratio from UrQMD 1.3 due to the lower amount of pion production and a slightly higher  $K^+$  yield (cf. Fig. 1). We note that the lower amount of pions in HSD is essentially due to an energy-density cut (in the local rest frame), which does not allow hadron formation when its energy density is above 1 GeV/fm<sup>3</sup>.

Despite this seemingly good description of the separate particle yields, the experimentally observed maximum in the  $K^+/\pi^+$  ratio at 20-30 A·GeV is not reproduced in the models. Due to strangeness conservation, the same

arguments hold for the  $(\Lambda + \Sigma^0)/\pi$  ratio, where the pronounced experimental maxima are underestimated due to the excess of pions in the transport models at top AGS energies (for HSD) and above  $\sim 5$  A·GeV (for UrQMD 1.3). Here UrQMD 2.1 performs better in the ratios due to the lower amount of pions produced by the high resonance decays. Since the  $K^-$  yields are well described by all approaches (cf. Fig. 1) the deviations in the  $K^-/\pi^-$  ratios at SPS and RHIC energies in UrQMD 1.3 indeed can be traced back to the excess of pions. This suggests that the entropy production, which is reflected in the pion to baryon ratio at these energies, is overestimated in UrQMD 1.3 (and HSD) above  $\sim 5$  A·GeV in central Au+Au collisions. Note, that in UrQMD 2.1 the entropy production is reduced by the generation of high mass states in  $s$ -channels, which essentially decay by emitting a lower amount of pions.

It has been discussed in the community [49], that the maximum in the  $K^+/\pi^+$  ratio might be due to isospin effects in Au+Au (Pb+Pb) collisions arising from a different rapidity dependence of  $u$  and  $d$  quarks in  $pp$ ,  $pn$  and  $nn$  collisions. We here address this issue and show in Fig. 4 the influence of isospin effects on the kaon to pion ratio. The left part of Fig. 4 displays the excitation function of the  $\langle\pi^- \rangle/\langle\pi^+ \rangle$  ratio from central Au+Au (or Pb+Pb) collisions calculated within HSD (solid line with open squares) and UrQMD 1.3 (solid line with open triangles). The right hand panel shows both the isospin-sensitive  $\langle K^+ \rangle/\langle\pi^+ \rangle$  ratio (open symbols) and the (approximately) isospin-insensitive  $2\langle K^+ \rangle/(\langle\pi^+ \rangle + \langle\pi^- \rangle)$  ratio (solid symbols). The HSD results are shown as squares connected by solid lines while the UrQMD 1.3 results are represented as dashed lines with triangles. The larger solid symbols indicate the experimental results for  $\langle K^+ \rangle/\langle\pi^+ \rangle$  from Refs. [9, 36, 41, 42] and the large open triangles correspond to the ratio  $2\langle K^+ \rangle/(\langle\pi^+ \rangle + \langle\pi^- \rangle)$  from Ref. [47]. As seen from Fig. 4, the calculated (as well as experimentally measured) isospin-insensitive ratio  $2\langle K^+ \rangle/(\langle\pi^+ \rangle + \langle\pi^- \rangle)$  is only slightly lower than the isospin-sensitive  $\langle K^+ \rangle/\langle\pi^+ \rangle$  ratio. This result is due to the approximately constant  $\langle\pi^- \rangle/\langle\pi^+ \rangle$  ratio above  $\sim 6$  A·GeV (l.h.s. of Fig. 4) in the transport calculations as well as in the data. We thus conclude that isospin effects cannot be responsible for the maximum in the  $\langle K^+ \rangle/\langle\pi^+ \rangle$  ratio (r.h.s. of Fig. 4).

## IV. TRANSVERSE MASS SPECTRA

Despite the relatively good agreement of data and transport calculations in the longitudinal direction [19], significant deviations are found in the transverse direction as pointed out in Ref. [20] before. This demonstrates that longitudinal rapidity distributions are less sensitive to the hadronic interaction channels employed in the transport models. We here present a more complete and systematic analysis up to the full RHIC energy of  $\sqrt{s} = 200$  GeV and investigate alternative scenarios.

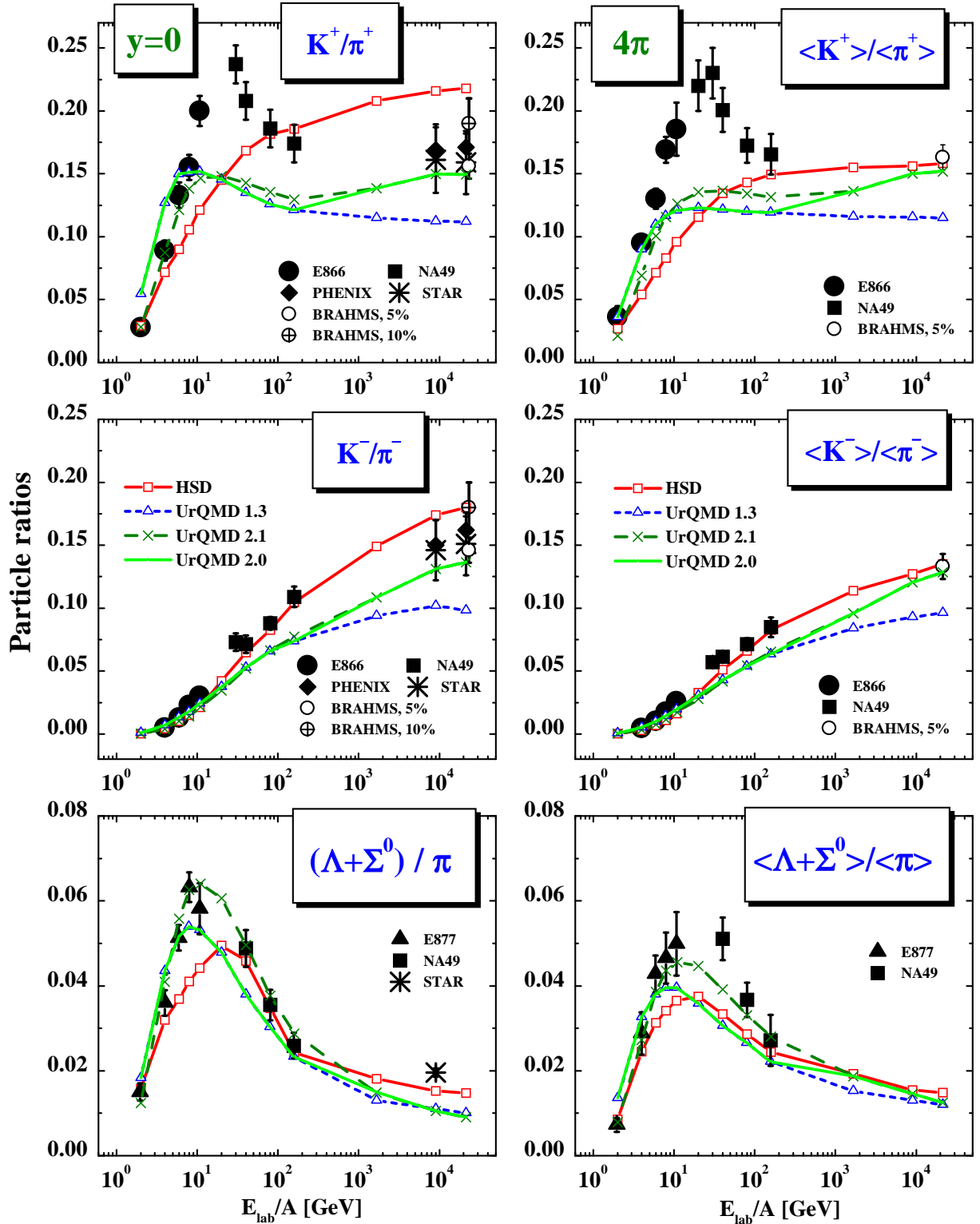


FIG. 3: (Color online) The excitation function of  $K^+/\pi^+$ ,  $K^-/\pi^-$  and  $(\Lambda + \Sigma^0)/\pi$  ratios from 5% central (AGS energies, SPS at 160 A-GeV and at RHIC energies), 7% central (20, 30, 40 and 80 A-GeV), 10% central for  $\Lambda + \Sigma^0$  at 160 A-GeV Au+Au (AGS and RHIC) or Pb+Pb (SPS) collisions in comparison to the experimental data from Refs. [36, 38] (AGS), [9, 39, 40, 41] (SPS) and [42, 43, 44] (RHIC) for midrapidity (left column) and rapidity integrated yields (right column). The solid lines with open squares show the results from HSD whereas the dashed lines with open triangles and the long dashed lines with crosses indicate the results from UrQMD 1.3 and UrQMD 2.1, respectively.

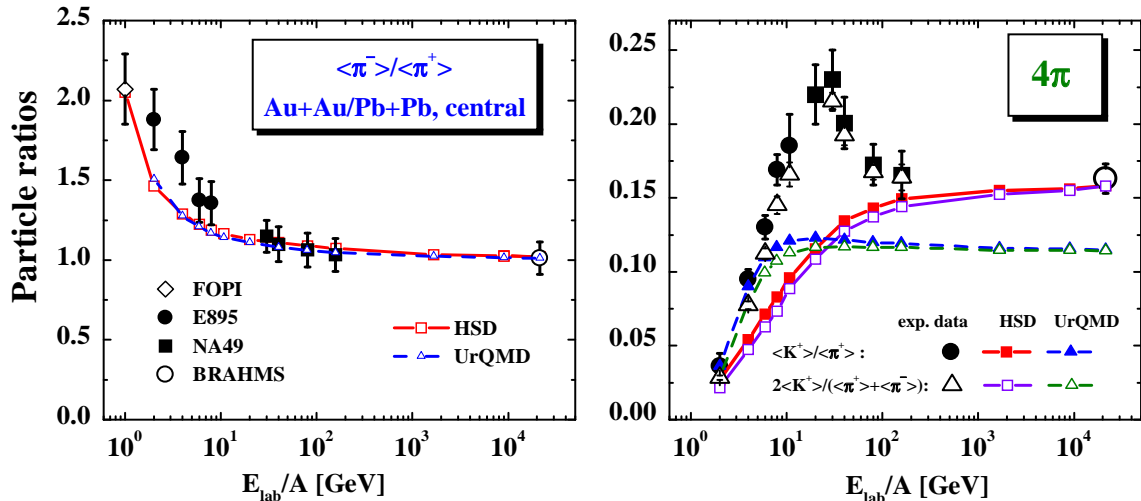


FIG. 4: (Color online) The excitation function of the  $\langle \pi^- \rangle / \langle \pi^+ \rangle$  (l.h.s.) and  $\langle K^+ \rangle / \langle \pi^+ \rangle$  ratios (r.h.s.) from central Au+Au (or Pb+Pb) collisions. Left part: the HSD results are shown by the solid line with open squares, whereas the UrQMD 1.3 calculations are displayed in terms of the solid line with open triangles. The experimental data have been taken from Refs. [9, 37, 42, 46]. Right part: the solid line with solid squares (triangles) (cf. Fig. 3) corresponds to the HSD (UrQMD 1.3) calculations for  $\langle K^+ \rangle / \langle \pi^+ \rangle$  (as well as the experimental data from Refs. [9, 36, 41, 42]) while the solid line with open squares (triangles) shows the calculated  $2\langle K^+ \rangle / (\langle \pi^+ \rangle + \langle \pi^- \rangle)$  ratio in comparison to the experimental data (open triangles) from Ref. [47].

We start with benchmark tests for the transport calculations for  $pp$  and  $pA$  reactions.

### A. $pp$ and $pA$ reactions

Our results for the transverse mass (or momentum) spectra of pions and kaons from  $pp$  reactions are presented in Fig. 5. The upper part includes the comparison of the differential cross sections for  $\pi^+$ ,  $\pi^-$  and  $K_S^0$  from  $pp$  reactions at 12 and 24 GeV/c from HSD (solid lines) and UrQMD 1.3 (dashed lines) with the data from Ref. [50]. The lower left part of Fig. 5 shows the transverse mass spectra at midrapidity for  $\pi^-$ ,  $K^+$  and  $K^- (\times 0.1)$  from  $pp$  reactions at a bombarding energy of 160 GeV from HSD (solid lines) and UrQMD 1.3 (dashed lines). The thin lines here correspond to fits with the experimental slope parameters  $163 \pm 10$  MeV for  $\pi^-$ ,  $172 \pm 17$  MeV for  $K^+$  and  $164 \pm 16$  MeV for  $K^-$  from Ref. [68]. The lower right part of Fig. 5 displays the transverse mass spectra at midrapidity for  $\pi^-$  and  $K^-$  from  $pp$  reactions at  $\sqrt{s} = 200$  GeV from HSD (solid lines), UrQMD 1.3 (dashed lines, multiplied by a factor 2), and UrQMD 2.0 (2.1) (long dashed lines). The full symbols, furthermore, stand for the data from the STAR Collaboration [44]. The description of the transverse mass spectra for pions and kaons is reasonably good in both approaches up to  $\sqrt{s} = 200$  GeV. We note in passing that the inclusion of PYTHIA (v 6.1) in UrQMD 2.0 and UrQMD 2.1 is essential in order to achieve a good description of the data since the contribution from jet fragmentation is essential at RHIC energies. Without jet production and fragmen-

tation the UrQMD model (version 1.3) underestimates the high momentum spectra severely (similar to RQMD [33, 51]).

We continue with  $pA$  reactions and show in the left part of Fig. 6 the results for the inverse slope parameters  $T$  in (1) for  $\pi^\pm$ ,  $K^+$  and  $K^-$  mesons at midrapidity from  $pA$  reactions at 14.6 GeV/c ( $A=\text{Be, Al, Cu, Au}$ ), whereas the right part includes the results at 450 GeV/c ( $A=\text{Be, S, Pb}$ ). The inverse slope parameters from HSD are shown as open symbols connected by solid lines and from UrQMD 1.3 (2.0) by open symbols (with crosses) connected by dashed lines. The full symbols (l.h.s.) correspond to the midrapidity data ( $\langle y_{lab} \rangle = 1.5, 1.7, 1.9$ ) from the E802 Collaboration [52] while the NA44 data [53] at  $2.4 \leq y_{lab} \leq 3.5$ ,  $p_T \leq 0.84$  GeV/c for  $K^+$ ,  $K^-$  and at  $2.4 \leq y_{lab} \leq 3.0$ ,  $p_T = 0.3 \div 1.2$  GeV/c (full diamonds) and  $3.1 \leq y_{lab} \leq 4.0$ ,  $p_T \leq 0.64$  GeV/c (full squares) for  $\pi^+$  are given on the right-hand side.

The overall reproduction of the transverse slope parameters at AGS and SPS energies for targets from Be to Pb by both transport models is sufficiently accurate. The inverse slope parameters from UrQMD 1.3 and HSD differ for pions and antikaons by about 10% at AGS energies. These differences can be traced back to the different production channels in the transport models at lower energies: in HSD the mesons are essentially produced by string decays, which are strongly forward peaked in momentum, whereas in UrQMD 1.3 they partly stem from high mass resonance decays with an isotropic decay in momentum space. At SPS energies the meson production in both models proceeds via string formation and decay and leads to very similar results. This also holds



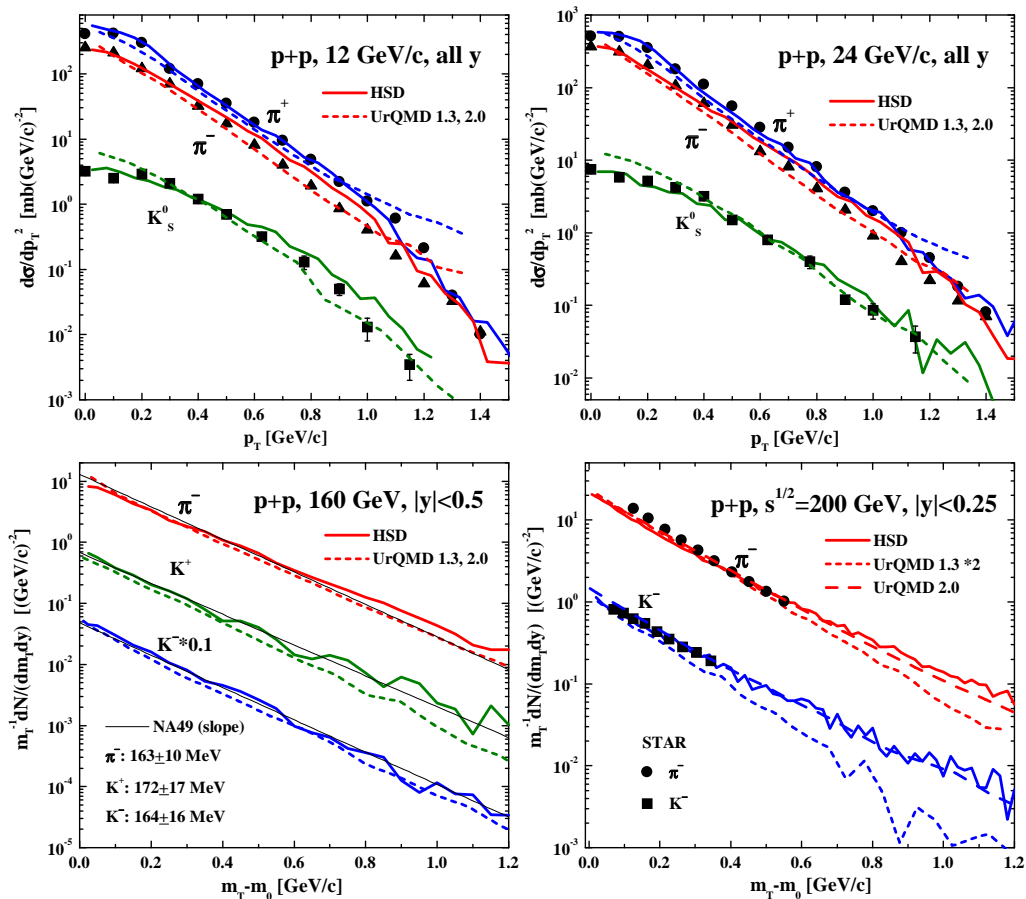


FIG. 5: (Color online) Upper part: comparison of the differential cross sections for  $\pi^+$ ,  $\pi^-$  and  $K_s^0$  from  $pp$  reactions at 12 and 24 GeV/c from HSD (solid lines) and UrQMD 1.3 (=UrQMD 2.0) (dashed lines) with the data from Ref. [50]. Lower part (left): the transverse mass spectra at midrapidity for  $\pi^-$ ,  $K^+$  and  $K^- (\times 0.1)$  from  $pp$  reactions at a bombarding energy 160 GeV from HSD (solid lines) and UrQMD 1.3 (dashed lines). The thin lines correspond to fits of the experimental slope parameters  $163 \pm 10$  MeV for  $\pi^-$ ,  $172 \pm 17$  MeV for  $K^+$  and  $164 \pm 16$  MeV for  $K^-$  from Ref. [68]. Lower part (right): the transverse mass spectra at midrapidity for  $\pi^-$  and  $K^-$  from  $pp$  reactions at  $\sqrt{s} = 200$  GeV from HSD (solid lines) and UrQMD 1.3 (dashed lines, multiplied by a factor 2) as well as UrQMD 2.0 (=UrQMD 2.1) (long dashed lines). The full symbols indicate the data from the STAR Collaboration [44].

for RHIC energies where additionally jet production and fragmentation contributes with increasing bombarding energy.

We note in passing that when including the initial state 'Cronin effect' (cf. Section VI) the inverse slope parameters  $T$  in Fig. 6 increase by less than 5% even for the Pb-target at 450 GeV/c. At 14.6 GeV/c there is no effect (within statistics) for all targets from Be to Au.

## B. A+A reactions

We continue with nucleus-nucleus collisions and recall that the experimental  $m_T$  spectra (at midrapidity) from central C+C and Si+Si collisions at 160 A-GeV [68] are well described by HSD and UrQMD 1.3. This holds for the  $\pi^-$ ,  $K^+$  as well as  $K^-$  spectra (cf. Fig. 1 in Ref. [20]).

This situation changes for central collisions of heavy nuclei like Au+Au or Pb+Pb. In Fig. 7 we display the calculated transverse mass spectra at midrapidity from HSD (solid lines) and UrQMD 2.0 (dashed lines) for  $\pi^\pm$ ,  $K^+$  and  $K^- (\times 0.1)$  from central Au+Au (Pb+Pb) reactions at 4, 6, 8, 11, 20 A-GeV (left part) and at 30, 40, 80, 160 A-GeV and  $\sqrt{s} = 200$  GeV (right part) with the data (full and open symbols) from Refs. [10, 36, 37, 42, 43, 44]<sup>2</sup>. At the lowest energy of 4 A-GeV the agreement between the transport approaches and the data is still acceptable, however, severe deviations are visible in the  $K^\pm$  spectra at top AGS, SPS and RHIC energies. Note that the  $\pi^\pm$  spectra are reasonably described at all energies while the inverse slope  $T$  of the

<sup>2</sup> Note that all data from the NA49 Collaboration at 30 A-GeV have to be considered as 'preliminary'

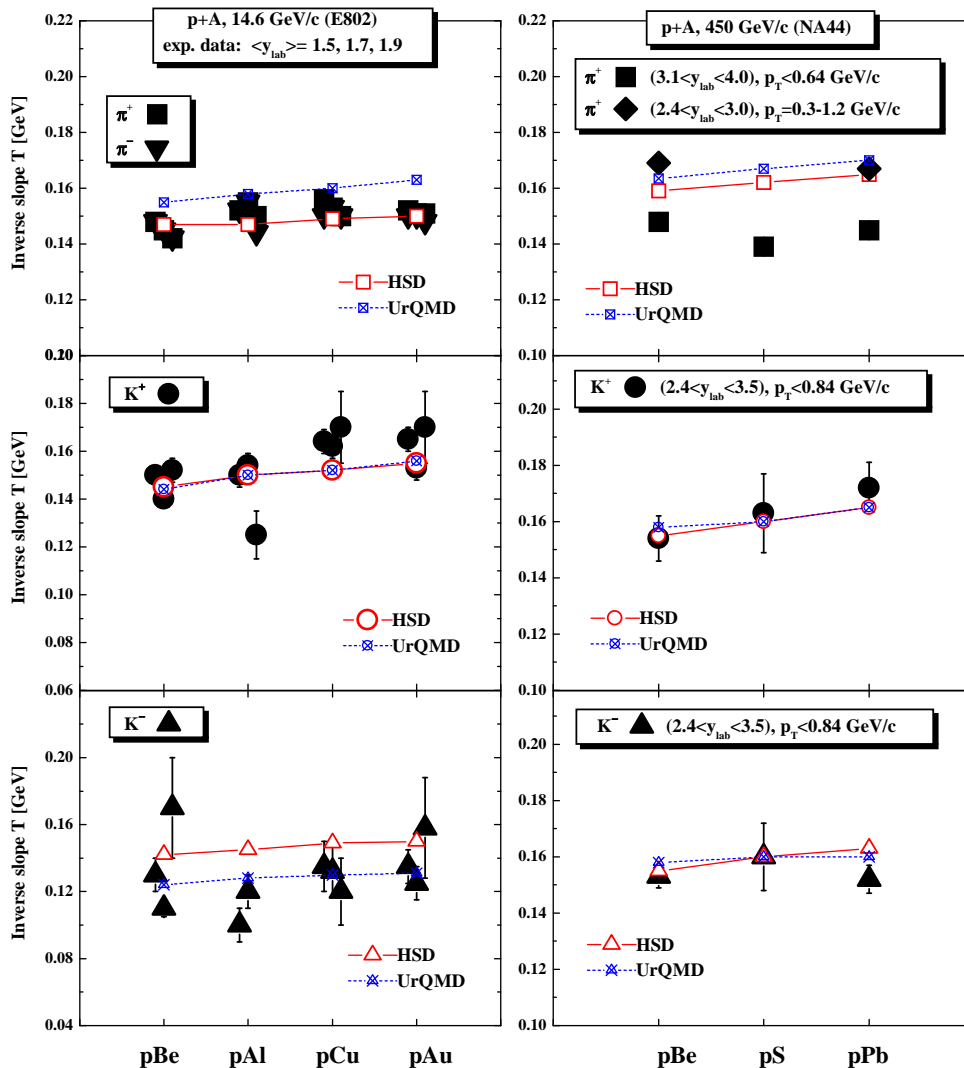


FIG. 6: (Color online) Inverse slope parameters  $T$  for  $\pi^\pm$ ,  $K^+$  and  $K^-$  at midrapidity from  $pA$  reactions at 14.6 GeV/c ( $A = \text{Be, Al, Cu, Au}$ ) – left part and at 450 GeV/c ( $A = \text{Be, S, Pb}$ ) – right part, from HSD (open symbols connected by solid lines) and UrQMD 1.3(2.0) (open symbols with crosses connected by dashed lines). The full symbols in the left part correspond to the midrapidity data ( $\langle y_{lab} \rangle = 1.5, 1.7, 1.9$ ) from the E802 Collaboration [52], in the right part to the NA44 data [53] at  $2.4 \leq y_{lab} \leq 3.5$ ,  $p_T \leq 0.84$  GeV/c for  $K^+, K^-$  and at  $2.4 \leq y_{lab} \leq 3.0$ ,  $p_T = 0.3 \div 1.2$  GeV/c (full diamonds) and  $3.1 \leq y_{lab} \leq 4.0$ ,  $p_T \leq 0.64$  GeV/c (full squares) for  $\pi^+$ .

$K^\pm$  transverse mass spectra is underestimated severely by about the same amount in both transport approaches (within statistics). The increase of the inverse  $K^\pm$  slopes in heavy-ion collisions with respect to  $pp$  collisions, which is generated by rescatterings of produced hadrons in the transport models, is only small because the elastic meson-baryon scattering is strongly forward peaked (in HSD and UrQMD 2.0) and therefore gives little additional transverse momentum especially at midrapidity.

## V. TESTING ALTERNATIVE SCENARIOS

In this Section we will investigate different hadron/string scenarios, which might contribute to

the increase of the inverse slope parameter of the  $K^\pm$  mesons in central Au+Au collisions and are not included in the 'default' versions of the transport approaches.

### A. In-medium potentials

The question comes up whether the discrepancies shown in Fig. 7 might be due to conventional hadronic medium effects. In fact, the  $m_T$  slopes of kaons and antikaons at SIS energies (1.5 to 2 A-GeV) were found to differ significantly [54]. As argued in [24] the different slopes could be traced back to repulsive potentials of kaons with nucleons, which lead to a hardening of the  $K^+$  spectra, and attractive antikaon-nucleon potentials,

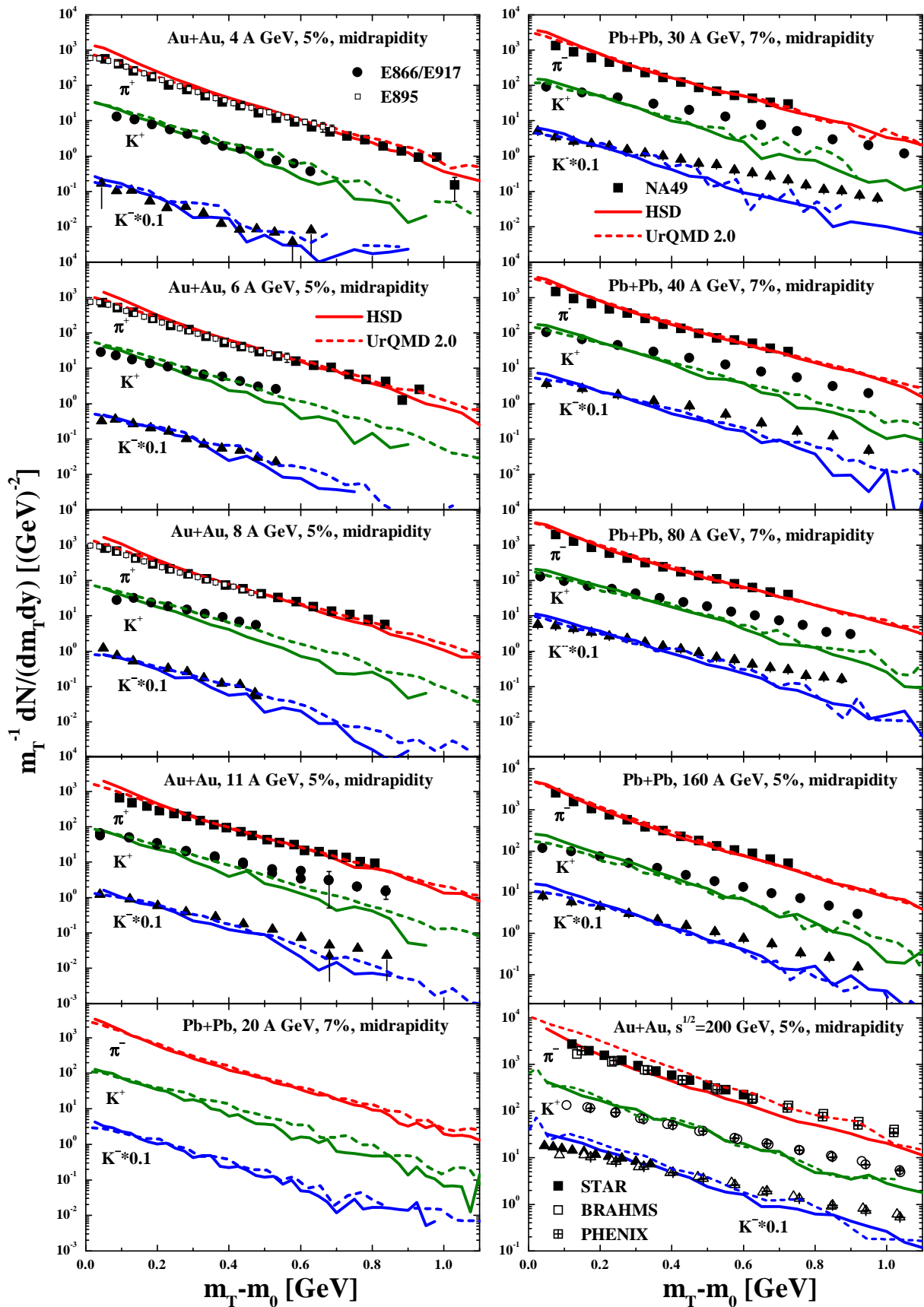


FIG. 7: (Color online) Comparison of transverse mass spectra at midrapidity from HSD (solid lines) and UrQMD 2.0 (dashed lines) for  $\pi^\pm$ ,  $K^+$  and  $K^-(\times 0.1)$  from central Au+Au (Pb+Pb) reactions at 4, 6, 8, 11, 20 A-GeV (left part) and at 30, 40, 80, 160 A-GeV and  $\sqrt{s} = 200$  GeV (right part) with the data (full and open symbols) from Refs. [10, 36, 37, 42, 43, 44].

which lead to a softening of the  $K^-$  spectra. However, the effect of such potentials was calculated within HSD and was found to be of minor importance at AGS and SPS energies [24] since the meson densities are comparable to or even larger than the baryon densities at AGS energies and above.

Additional self energy contributions stem from  $K^\pm$  interactions with mesons which become increasingly important for higher bombarding energies; however,  $s$ -wave kaon-pion interactions are weak due to chiral symmetry arguments and  $p$ -wave interactions such as  $\pi + K \leftrightarrow K^*$  transitions are suppressed substantially by the approximately 'thermal' pion spectrum. A recent study on the kaon potentials in hot pion matter gives kaon mass shifts of about  $-52$  MeV and vector potentials of  $\sim +49$  MeV [55] for a pion gas at temperature  $T = 170$  MeV. We have employed even slightly larger  $K^\pm$  potentials in dynamical HSD calculations and achieved a hardening of the  $K^\pm$  spectra by less than 10%.

## B. Overlapping strings

Furthermore, we have pursued the idea of Refs. [33, 56] that the  $K^\pm$  spectra could be hardened by string-string interactions, which increase the effective string tension  $\sigma$  and thus the probability to produce mesons at high  $m_T$  [30, 56]. A related suggestion has been put forward in [57].

In order to estimate the largest possible effect of string-string interactions we have assumed that for two overlapping strings the string tension  $\sigma$  is increased by a factor of two, for three overlapping strings by a factor of three etc. Here the overlap of strings is defined geometrically assuming a transverse string radius  $R_s$ , which according to the studies in Ref. [58] should be  $R_s \leq 0.25$  fm. Additionally an overlap of the strings in longitudinal direction is required which, however, does not involve any new parameter since the dynamics of the string ends is directly available from the HSD transport calculations. Based on these assumptions (and  $R_s = 0.25$  fm as in Refs. [57]), we find only a small increase of the inverse slope parameters at AGS energies, where the string densities are low (dashed lines in Fig. 8 in comparison to the 'default' calculations (solid lines)). At SPS and RHIC energies the model gives a hardening of the spectra by about 15% which, however, is still too low in comparison to the data in Fig. 7. Despite of the large number of 'initial' strings in central Au+Au collisions at SPS or RHIC energies, their average 'eigenvolume' (in the rest frame at break up) is low ( $\approx 0.3$  fm<sup>3</sup>) compared to the eigenvolume of a nucleon ( $\approx 2$  fm<sup>3</sup>) due to the fast string fragmentation process. Consequently the critical density of color neutral strings may be about 7 times higher than the critical density of nucleons with respect to a phase transition induced by percolation [59].

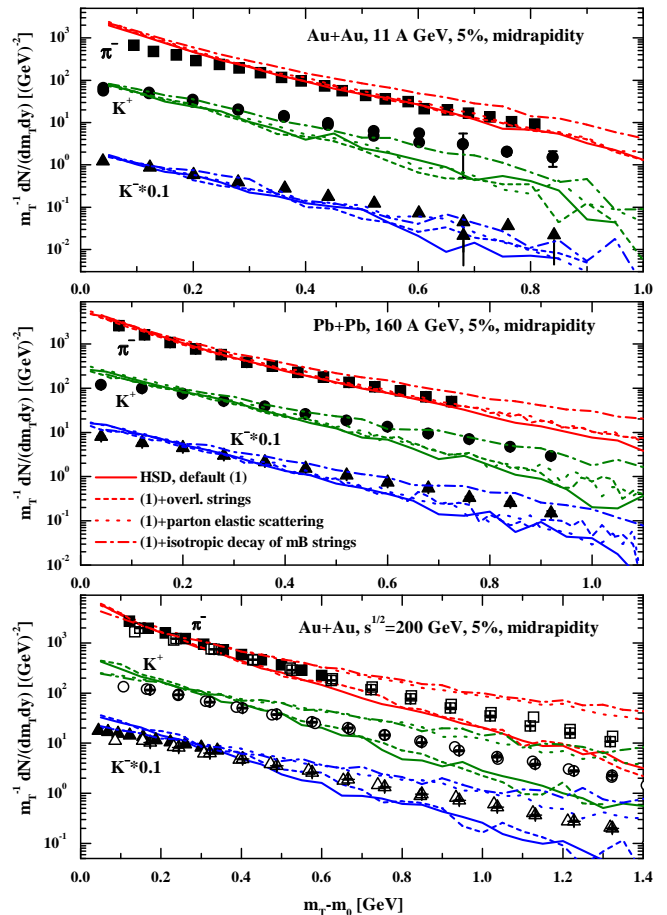


FIG. 8: (Color online) The transverse mass spectra at midrapidity for  $\pi^-$ ,  $K^+$  and  $K^- (\times 0.1)$  from 5% central Au+Au (Pb+Pb) reactions at 11 A-GeV, 160 A-GeV and  $\sqrt{s} = 200$  GeV calculated for different scenarios in HSD: the solid lines correspond to the default calculations, the dashed lines to simulations with overlapping strings, the dotted lines reflect calculations including 'parton elastic scattering' and the dot-dashed lines arise from calculations with an isotropic decay of meson-baryon ( $mB$ ) strings (see text). The experimental data are the same as in Fig. 7.

## C. Parton elastic scattering

We have examined another possibility which we denote as 'parton elastic scattering'. To this end we have included elastic scattering of unformed hadrons in the initial phase of the reaction – before they actually evolve to their full hadronic size – employing the elastic pion-nucleon cross section per quark degree of freedom. The results of these simulations are shown in Fig. 8 by the dotted lines which give a much better reproduction of the experimental spectra at  $\sqrt{s} = 200$  GeV, that are even slightly overestimated. The drawback on the other side is that the hadron rapidity spectra now are overestimated by  $\sim 20\%$  relative to the default calculation (and the experimental data). The increase in the slope parameter especially for  $K^\pm$  spectra at AGS and SPS energies,

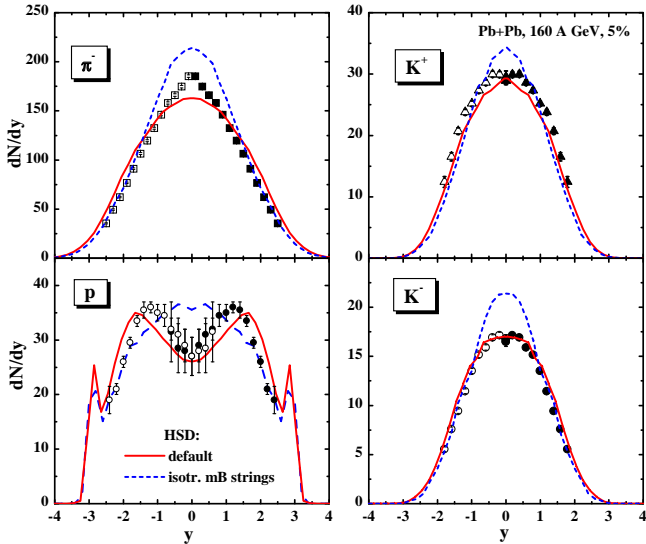


FIG. 9: (Color online) The rapidity distribution for  $\pi^-$ ,  $K^+$ ,  $K^-$  and protons from 5% central Pb+Pb reactions at 160 A-GeV. The solid lines correspond to the default HSD calculations, whereas the dashed lines show the calculations with an isotropic decay of strings from  $mB$  collisions (see text). The experimental data are taken from Refs. [9, 62].

however, is only moderate and a significant discrepancy remains with respect to the experimental spectra.

#### D. Isotropic decay of strings from meson-baryon collisions

Following a further idea of Ref. [60] we explore the possibility that the fragmentation of strings from  $mB$  collisions modifies in the dense and hot medium. An extreme modification amounts to assume an isotropic decay of  $mB$  strings – as employed in the RQMD model [33] – which leads to a reduction of longitudinal hadron momenta and an enhancement of their transverse momenta. The results of these simulations are displayed in Fig. 8 for the transverse mass spectra of pions, kaons and antikaons (dot-dashed lines). Apparently, this modified fragmentation function leads to much better results in comparison to experiment (cf. dot-dashed lines in Fig. 8).

The drawback with this scenario, however, is that the approximate agreement with the longitudinal rapidity distributions for  $\pi^-$ ,  $K^+$ ,  $K^-$  and protons is destroyed as demonstrated in Fig. 9 for 5% central Pb+Pb reactions at 160 A-GeV. Here the solid lines correspond to the default HSD calculations whereas the dashed lines stand for the calculations with an isotropic decay of  $mB$  strings. Obviously, the latter scenario leads to an enhanced stopping of the nuclei and larger meson production, which is not supported very much by the data. We admit, that a slightly more isotropic decay of the  $mB$  strings (with respect to the default calculations) would be favored by the experimental data; however, we do not aim at fitting

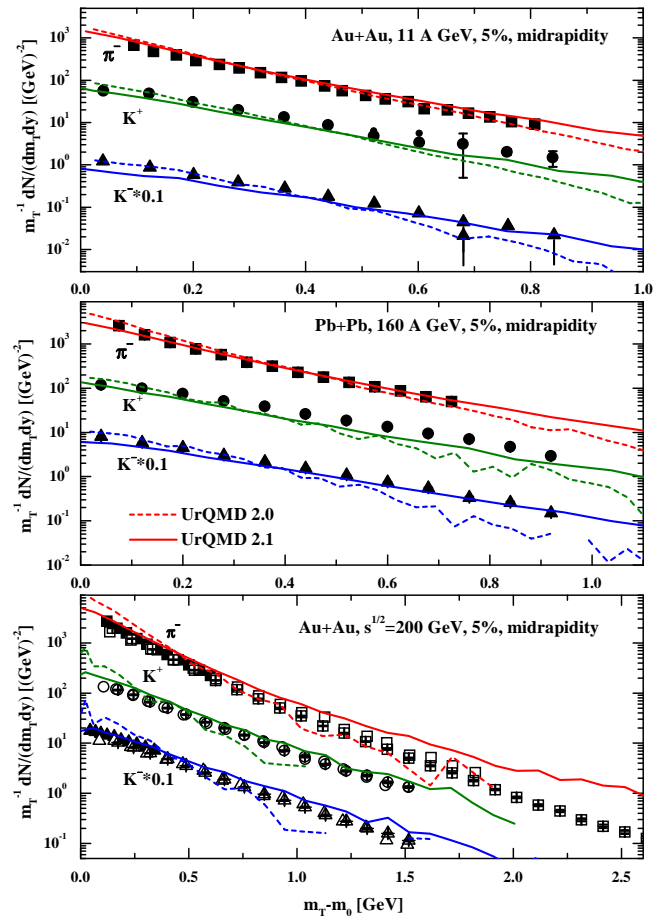


FIG. 10: (Color online) The transverse mass spectra at midrapidity for  $\pi^-$ ,  $K^+$  and  $K^- (\times 0.1)$  from 5% central Au+Au (Pb+Pb) reactions at 11 A-GeV, 160 A-GeV and  $\sqrt{s} = 200$  GeV calculated for different scenarios in UrQMD: the dashed lines correspond to the default calculations (UrQMD 2.0), the solid lines to simulations with high mass baryon resonances (UrQMD 2.1). The experimental data are the same as in Fig. 7.

data here. We mention - without explicit representation - that the comparison shown in Fig. 9 for central collisions at 160 A-GeV holds qualitatively also at AGS and RHIC energies.

#### E. High mass baryon resonances (UrQMD 2.1)

A further possibility to harden the meson and nucleon spectra in a coupled-channel transport approach is to introduce higher mass baryon resonances with masses  $> 2$  GeV as in RQMD [33], that decay isotropically and dominantly couple to the  $\pi N$  channel and not to multipion + nucleon channels. As described in Section II, the version UrQMD 2.1 has been set up to incorporate this possibility and to explore its consequences. Since the 'massive' resonances decay isotropically in their rest frame, this leads to enhanced transverse flow as found in the

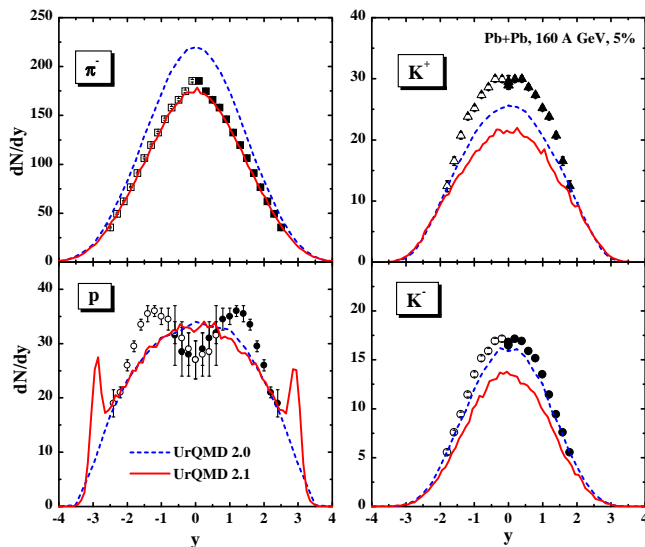


FIG. 11: (Color online) The rapidity distribution for  $\pi^-$ ,  $K^+$ ,  $K^-$  and protons from 5% central Pb+Pb reactions at 160 A·GeV. The dashed lines correspond to the default calculations from UrQMD 2.0, whereas the solid lines show the calculations with high mass baryon resonances (UrQMD 2.1). The experimental data are taken from Refs. [9, 62].

previous Subsection. The penalty of enhanced hadron production (cf. Fig. 9) is cured in UrQMD 2.1 since the high mass resonance decays produce 25% less particles as compared to a string of the same invariant mass. In this way one can produce larger hadron transverse momenta in the transport calculations without increasing the meson multiplicities on average. Such a 'prescription' fits the data in the AGS and SPS energy regime very well (similar to RQMD [33, 61]). However, the open question remains, if such 'states' could be identified in meson-baryon scattering and, furthermore, if they would survive in a dense hadronic medium.

In Fig. 10 we show the transverse mass spectra at midrapidity for  $\pi^-$ ,  $K^+$  and  $K^- (\times 0.1)$  from 5% central Au+Au (Pb+Pb) reactions at 11 A·GeV, 160 A·GeV and  $\sqrt{s} = 200$  GeV calculated for different scenarios in UrQMD: the dashed lines correspond to the default calculations (UrQMD 2.0), the solid lines to simulations with high mass baryon resonances (UrQMD 2.1). Indeed, the description of the pion and  $K^\pm$  improves substantially in UrQMD 2.1 relative to UrQMD 2.0 (and HSD) at AGS and SPS energies. However, the penalty here is that now the spectra at the top RHIC energy are overestimated at high transverse mass for pions and antikaons.

Moreover, the improvement in the spectral slope for pions and kaons at AGS and SPS energies in UrQMD 2.1 does not go along with an improvement in the rapidity spectra as shown in Fig. 11. Though the  $\pi^-$  rapidity distribution can be well described for 5% central Pb+Pb reactions at 160 A·GeV due to the reduction of pion production in the decay scheme of the high mass states, the rapidity spectra of  $K^\pm$  mesons are also lower in UrQMD

2.1 (solid lines) compared to UrQMD 2.0 (dashed lines) and the data. The proton stopping at midrapidity is not much affected by the introduction of the high mass states since they do not couple to the baryon-baryon channel.

We conclude, that the recipe of high mass states – as incorporated in UrQMD similar to RQMD – does not solve the problem with the  $K^+/\pi^+$  ratio.

## VI. CRONIN ENHANCEMENT IN $pA$ AND $AA$ COLLISIONS

The Cronin effect dates back to measurements of transverse hadron spectra from  $pA$  collisions at the SPS and ISR [63, 64] and relates to a (moderate) enhancement of transverse momentum spectra with increasing target mass  $A$ . Though the microscopic origin of this effect is not fully understood, most current interpretations are based on semi-hard initial state gluon radiation of the propagating quarks in the medium prior to a hard interaction vertex (cf. e.g. [65]). In this way the initial transverse momentum distribution of partons is extended to higher average  $\langle k_T^2 \rangle$ . We discard a further discussion of its physical origin and proceed with effective simulations following Ref. [25]. In the latter work it was suggested that such an enhancement of the intrinsic quark transverse momentum spread  $\langle k_T^2 \rangle$  might be simulated in the transport approach by increasing the average transverse momentum spread of the quarks  $\langle k_T^2 \rangle$  with the number of previous collisions of primary nucleons  $N_{prev}$  as

$$\langle k_T^2 \rangle = \langle k_T^2 \rangle_{pp} (1 + \alpha N_{prev}). \quad (2)$$

The parameter  $\alpha \approx 0.4$  has been determined in Ref. [25] by comparing to the experimental data for d+Au collisions [12, 13] at  $\sqrt{s} = 200$  GeV. This assumption is in line with an independent analysis within the Glauber model by Papp et al. [66]. Note, that  $N_{prev}$  is not a further parameter of the model but calculated dynamically in the transport approach.

Whereas the different alternative scenarios discussed in Section V relate to various model assumptions, which are not directly controlled by experimental data, the initial state Cronin enhancement is an established experimental fact. Consequently, it should be incorporated in 'future' transport approaches (as in Ref. [25]). For further details we refer the reader to the latter publication.

### A. $A + A$ reactions with initial state Cronin enhancement

Our results for the transverse mass spectra at midrapidity for  $\pi^-$ ,  $K^+$  and  $K^- (\times 0.1)$  from 5% central Au+Au (Pb+Pb) reactions at 11 A·GeV, 160 A·GeV and  $\sqrt{s} = 200$  GeV as calculated within HSD including the Cronin effect (2) (solid lines) are presented in Fig. 12 in comparison to the default calculations (dashed lines). The experimental data are the same as in Fig. 7. The

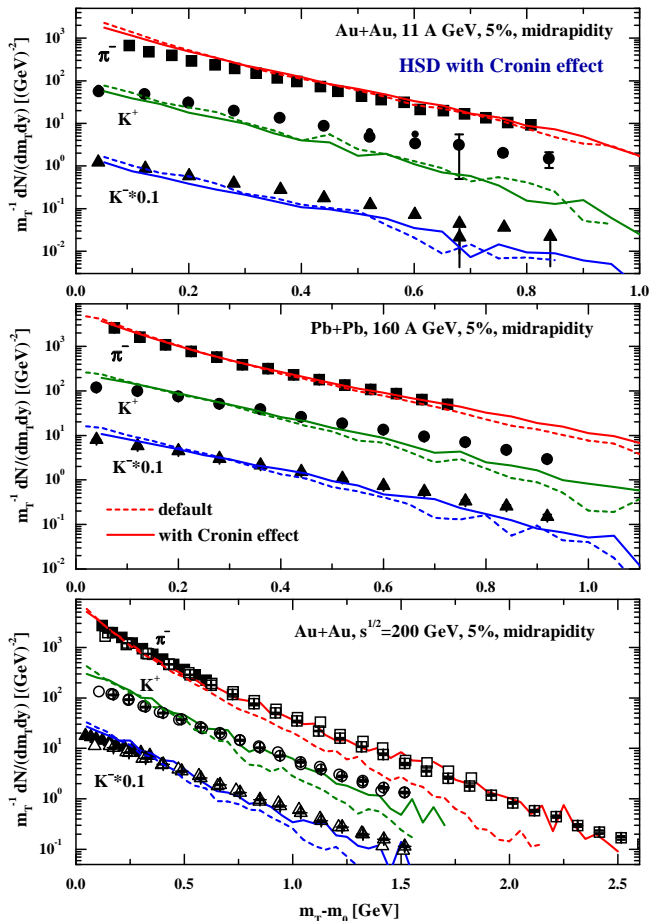


FIG. 12: (Color online) The transverse mass spectra at midrapidity for  $\pi^-$ ,  $K^+$  and  $K^- (\times 0.1)$  from 5% central Au+Au (Pb+Pb) reactions at 11, 160 A-GeV and  $\sqrt{s} = 200$  GeV calculated within HSD including the Cronin effect (2) (solid lines) in comparison to the default calculations (dashed lines). The experimental data are the same as in Fig. 7.

description of the spectra becomes rather good at RHIC energies, improves substantially at the SPS energy of 160 A-GeV, but does not give any significant change at 11 A-GeV. Consequently, the 'prehadronic' Cronin effect - as implemented via (2) - is not responsible for the dramatic increase of the  $K^\pm$  slopes at AGS energies. Our calculations, however, show that a hardening of the transverse mass spectra should not only be attributed to the presence of collective flow, but also to initial state semi-hard scattering of fast quarks in a dense medium; the latter effect becomes more important with increasing  $\sqrt{s}$ . A more detailed and quantitative analysis on the competition of initial state Cronin enhancement and collective flow from pressure gradients at SPS and RHIC energies we postpone to an upcoming study.

## VII. INVERSE SLOPE PARAMETERS AND $\langle p_T \rangle$

Our findings are summarized in Fig. 13, where the dependence of the inverse slope parameter  $T$  (defined by Eq. (1)) on  $\sqrt{s}$  is shown and compared to experimental data (partly preliminary) from Refs. [10, 36, 41, 42, 43, 44, 67] for central Au+Au (Pb+Pb) collisions (l.h.s.) and [44, 68, 69] for  $pp$  collisions (r.h.s.). The upper and lower solid lines (with open circles) on the l.h.s. in Fig. 13 correspond to results from HSD calculations, where the upper and lower limits are due to fitting the slope  $T$  itself, an uncertainty in the repulsive  $K^\pm$ -pion potential or the possible effect of string overlaps. The solid lines with stars correspond to the HSD calculations with the Cronin effect (2). The dashed lines with open upper triangles represent slope parameters from UrQMD 1.3, the dot-dashed lines with open lower triangles correspond to UrQMD 2.0 results, which are well within the limits obtained from the different HSD calculations without the Cronin enhancement. The dotted lines with crosses show the UrQMD 2.1 results that incorporate the high mass resonance states.

The slope parameters from  $pp$  collisions (r.h.s. in Fig. 13) are seen to increase smoothly with energy both in the experiment (full symbols) and in the HSD calculations (full lines with open circles). The error bars related to our calculations are due to an uncertainty in extracting the slope parameter from different  $m_T$  intervals. The UrQMD 1.3 results are shown as open upper triangles connected by the solid line and systematically lower than the slopes from HSD at all energies. When including jet production and fragmentation via PYTHIA in UrQMD 2.0 (dot-dashed lines with open lower triangles) the results become similar to HSD above  $\sqrt{s} = 10$  GeV demonstrating the importance of jets in  $pp$  reactions at high energy.

Coming back to the slope parameters of  $K^\pm$  mesons for central Au+Au/Pb+Pb collisions (l.h.s. of Fig. 13) we find that the Cronin initial state enhancement indeed improves the description of the data at RHIC energies, however, does not give any sizeable enhancement at AGS energies. Here UrQMD 2.1 (dashed lines with crosses) with the high mass resonance states performs better for  $K^+$  mesons, but overestimates the  $K^-$  slopes at AGS as well as upper SPS energies.

An alternative way of representing the data is provided by the excitation function for the average transverse momentum  $\langle p_T \rangle$  for pions (l.h.s.) and kaons (r.h.s.) in Fig. 14 for the different transport models in comparison to the data available. HSD: upper and lower solid lines with open circles, UrQMD 2.0: dot-dashed lines with open lower triangles and UrQMD 2.1: dotted lines with crosses; the data are from Refs. [42, 43, 44, 70, 71]. The dotted line with the open diamonds (r.h.s.) shows  $\langle p_T \rangle$  for  $K^-$  from UrQMD 2.1. Furthermore, the solid lines with stars correspond to the HSD calculations with the Cronin effect, which gives a good description of the average  $\langle p_T \rangle$  in case of pions and significantly improves

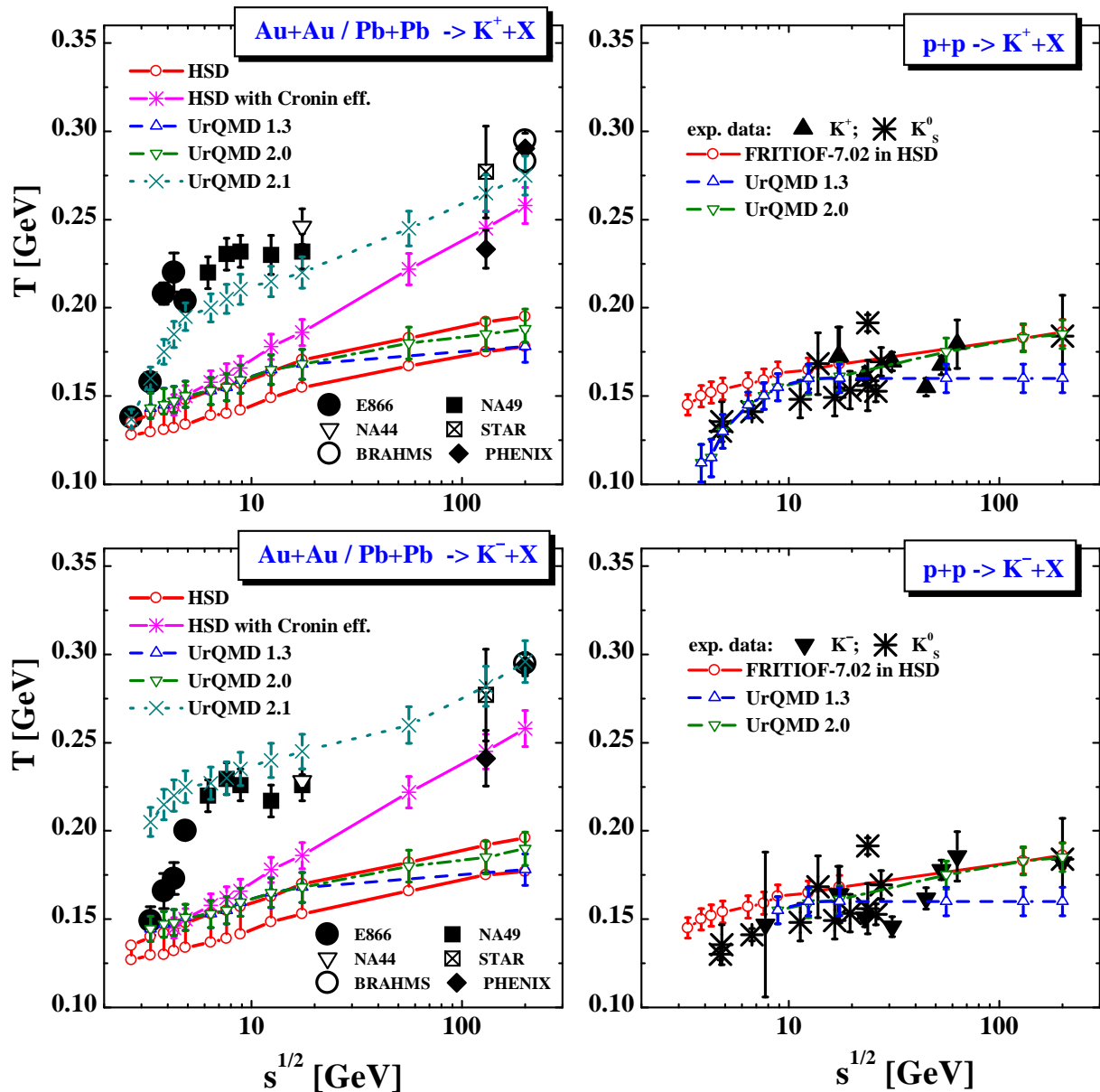


FIG. 13: (Color online) Comparison of the inverse slope parameters  $T$  for  $K^+$  and  $K^-$  mesons from central Au+Au (Pb+Pb) collisions (l.h.s.) and  $pp$  reactions (r.h.s.) at midrapidity as a function of the invariant energy  $\sqrt{s}$  from HSD (upper and lower solid lines with open circles), UrQMD 1.3 (dashed lines with open upper triangles), UrQMD 2.0 (dot-dashed lines with open lower triangles), UrQMD 2.1 (dotted lines with crosses) with the data from Refs. [10, 36, 41, 42, 43, 44, 67] for AA and [44, 68, 69] for  $pp$  collisions. The upper and lower solid lines in the left diagrams result from different limits of the HSD calculations as discussed in the text while the solid lines with stars correspond to HSD calculations with the Cronin initial state enhancement (2).

the average  $\langle p_T \rangle$  for kaons as a function of  $\sqrt{s}$  (with respect to default HSD and UrQMD 2.0 calculations). The UrQMD 2.1 calculations overestimate  $\langle p_T \rangle$  for pions at all energies by 10 to 15 % as well as for  $K^-$  at AGS and SPS energies in line with the trends from Fig. 13; however, the average  $p_T$  for  $K^+$  mesons is rather well described.

### VIII. THERMODYNAMICS IN THE $T - \mu_B$ PLANE

This still leaves us with the question of the origin of the rapid increase of the  $K^\pm$  slopes with invariant energy for central Au+Au collisions at AGS energies and the constant slope at SPS energies (the 'step'), which is missed in all transport approaches presently employed. We recall that higher transverse particle momenta either



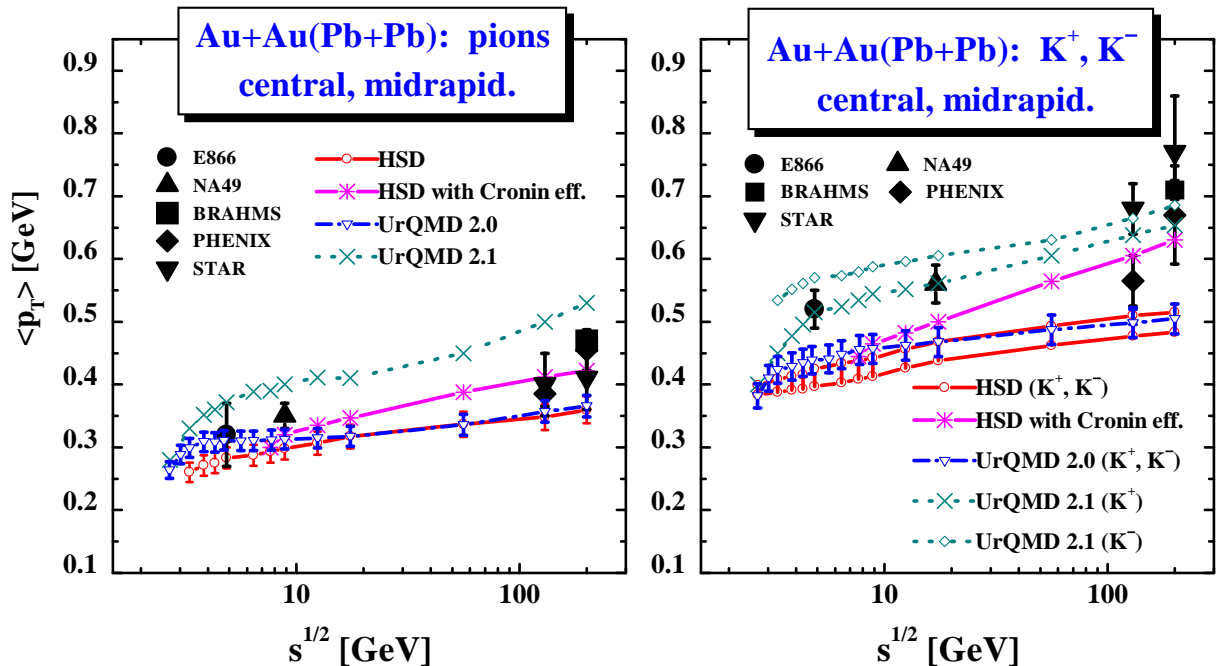


FIG. 14: (Color online) The excitation function for the average values of  $p_T$  at midrapidity for pions (left) and kaons (right) calculated within HSD (upper and lower solid lines with open circles) and UrQMD 2.0 (dot-dashed lines with open lower triangles), UrQMD 2.1 (dotted lines with crosses) in comparison to the data from Refs. [42, 43, 44, 70, 71]. The solid lines with stars correspond to the HSD calculations with the Cronin effect (2). The dotted line with the open diamonds (right part) gives  $\langle p_T \rangle$  for  $K^-$  from UrQMD 2.1.

arise from repulsive self energies – in mean-field dynamics – or from collisions, which reduce longitudinal momenta in favor of transverse momenta [4, 72]. As shown above in Fig. 13 conventional hadron self-energy effects and (pre-)hadronic and hadronic binary collisions are insufficient to describe the dramatic increase of the  $K^\pm$  slopes as a function of  $\sqrt{s}$  as well as the initial state Cronin enhancement. Only when including high mass resonances in UrQMD 2.1 – with a particular decay pattern – we may end up with reasonable results for  $K^+$  mesons, however, fail more severely for pions as well as antikaons. These failures of 10 to 15% indicate an additional mechanism for the generation of the pressure that is observed experimentally especially at AGS energies.

We speculate – following the previous study [20] – that partonic degrees of freedom should be responsible for this effect already at  $\sim 5$  A-GeV. Our arguments here are based on a comparison of the thermodynamic parameters  $T$  and  $\mu_B$  extracted from the transport models in the central overlap regime of Au+Au collisions [28] with the experimental systematics on chemical freeze-out configurations [73] in the  $T, \mu_B$  plane. The solid line in Fig. 15 characterizes the universal chemical freeze-out line from Cleymans et al. [73] whereas the full dots with errorbars denote the ‘experimental’ chemical freeze-out parameters – determined from the thermal model fits to the experimental ratios – taken from Ref. [73]. The various symbols (in vertical sequence) represent temperatures  $T$  and chemical potentials  $\mu_B$  extracted from UrQMD 1.3 trans-

port calculations in central Au+Au (Pb+Pb) collisions at 21.3 A-TeV, 160, 40 and 11 A-GeV [28] as a function of the reaction time in the center-of-mass (from top to bottom). The open symbols denote nonequilibrium configurations and correspond to  $T$  parameters extracted from the transverse momentum distributions, whereas the full symbols denote configurations in approximate pressure equilibrium in longitudinal and transverse direction.

During the nonequilibrium phase (open symbols) the transport calculations show much higher temperatures (or energy densities) than the ‘experimental’ chemical freeze-out configurations at all bombarding energies ( $\geq 11$  A-GeV). These numbers are also higher than the tri-critical endpoints extracted from lattice QCD calculations by Karsch et al. [74] (large open circle) and Fodor and Katz [7] (star with horizontal error bar). Though the QCD lattice calculations differ substantially in the value of  $\mu_B$  for the critical endpoint, the critical temperature  $T_c$  is closer to 160 MeV in both calculations, while the energy density is of the order of 1 GeV/fm<sup>3</sup> or even below. Nevertheless, this diagram shows that at RHIC energies one encounters more likely a cross-over between the different phases when stepping down in temperature during the expansion phase of the hot fireball.

This situation might change at lower SPS or AGS (as well as new GSI SIS-300 [75]) energies, where for sufficiently large chemical potentials  $\mu_B$  the cross over should change to a first order transition [76], i.e. beyond the tri-critical point in the  $(T, \mu_B)$  plane. Nevertheless, Fig. 15

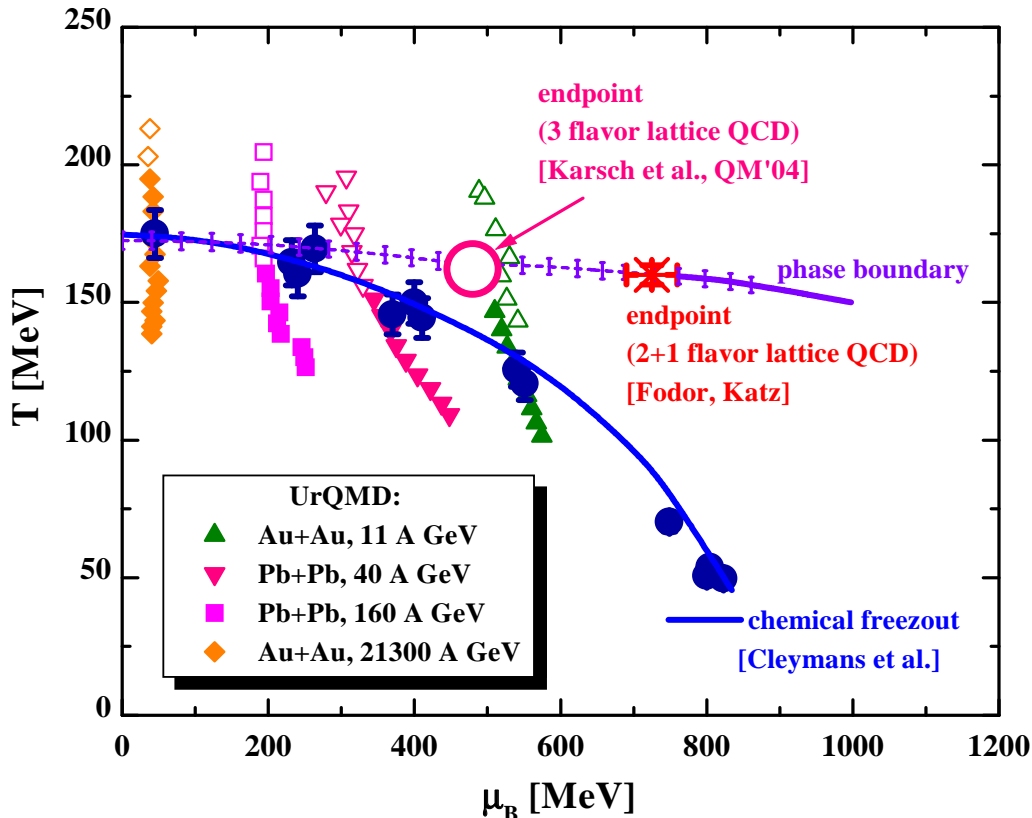


FIG. 15: (Color online) Schematic phase diagram in the  $T - \mu_B$  plane. The solid line characterizes the universal chemical freeze-out line from Cleymans et al. [73] whereas the full dots (with errorbars) denote the 'experimental' chemical freeze-out parameters from Ref. [73]. The various symbols represent temperatures  $T$  and chemical potentials  $\mu_B$  extracted from UrQMD 1.3 transport calculations in central Au+Au (Pb+Pb) collisions at 21.3 A·TeV, 160, 40 and 11 A·GeV [28] (see text). The large open circle and the star indicate the tri-critical endpoints from lattice QCD calculations by Karsch et al. [74] and Fodor and Katz [7], respectively. The horizontal line with errorbars is the phase boundary from [7].

demonstrates that the transport calculation show temperatures (energy densities) well above the phase boundary (horizontal line with errorbars from Ref. [7]) in the very early phase of the collisions, where hadronic interactions yield only a pressure  $p \sim 0.1 - 0.14\epsilon$  (with  $\epsilon$  denoting the energy density). We recall that for massless partonic degrees of freedom we have  $p \sim \epsilon/3$  and consequently a much higher pressure. This argument is well in line with the studies on elliptic flow at RHIC energies, that is underestimated by  $\sim 30\%$  at midrapidity in the HSD approach [48] and by a factor of  $\sim 2$  in the UrQMD 1.3 model [77]. Only strong pre-hadronic/partonic interactions might cure this problem.

As shown in Ref. [78], in order to describe the elliptic flow seen experimentally at RHIC in a parton cascade model, one has to employ parton cross sections up to 45 mb. However, such strong interactions are incompatible with perturbative QCD, which gives cross sections that are lower by more than an order of magnitude [78]. We speculate that such strong nonperturbative interactions on the partonic level are responsible for the large pressure generation in the very early phase of intermediate energy nucleus-nucleus collisions.

## IX. SUMMARY

Summarizing this work, we point out that baryon stopping and hadron production in central Au+Au (or Pb+Pb) collisions is quite well described in the independent transport approaches HSD and UrQMD 2.0. Also the 'longitudinal' rapidity distributions of protons, pions, kaons, antikaons and hyperons are similar in both models and in reasonable agreement with available data. The exception are the pion rapidity spectra at the highest AGS energy and lower SPS energies, which are overestimated by both models [19]. As a consequence the HSD and UrQMD 2.0 transport approaches underestimate the experimental maximum of the  $K^+/\pi^+$  ratio at  $\sim 20$  to 30 A·GeV and UrQMD underestimates also the data at RHIC energies. This also holds for the new version UrQMD 2.1 introduced here additionally, which incorporates high mass resonance states above 2 GeV with a particular decay pattern. This recipe cures the problem of the overestimated pion yield at AGS and SPS energies but also reduces the  $K^\pm$  yield and therefore has only little effect on the  $K^+/\pi^+$  ratio.

We have found that the inverse slope parameters  $T$

for  $K^\pm$  mesons from the HSD and UrQMD 2.0 transport models are practically independent of system size from  $pp$  up to central Pb+Pb collisions and show only a slight increase with collision energy. The calculated transverse mass spectra are in reasonable agreement with the experimental results for  $pp$  reactions at all bombarding energies investigated as well as central collisions of light nuclei (C+C and Si+Si) (cf. Ref. [20]). The rapid increase of the inverse slope parameters of kaons for central collisions of heavy nuclei (Au+Au or Pb+Pb) found experimentally in the AGS energy range, however, is not reproduced by both models in their default version (see Fig. 13).

We have, furthermore, discussed a couple of scenarios in Section V to improve the description of the experimental data. However, none of the alternative scenarios leads to a fully satisfactory reproduction of all the experimental data. It is worth pointing out that a substantial hardening of the  $K^\pm$  slope results from an initial state Cronin enhancement at higher SPS and RHIC energies, that should not be attributed to collective flow (or initial pressure). This Cronin enhancement – as known experimentally from  $p+A$  reactions at SPS energies – does not signal a phase transition to a quark-gluon-plasma.

We thus have argued - in comparison to lattice QCD calculations at finite temperature and baryon chemical potential  $\mu_B$  from Refs. [7] and [74] as well as the experimental systematics in the chemical freeze-out parameters (cf. Fig. 15) – that the missing pressure should be generated in the early phase of the collision by nonperturbative partonic interactions because the strong hadronic

interactions don't produce it in the later stages.

The interesting finding of our analysis is, that pre-hadronic/partonic degrees of freedom seem to play a substantial role in central Au+Au collisions already at AGS energies above  $\sim 5 A\cdot\text{GeV}$ . This finding is in line with the 'observation' that the excitation function of the proton elliptic flow  $v_2$  also indicates a softening of the equation of state with increasing energy at 4-5  $A\cdot\text{GeV}$  in Au+Au collisions [79, 80, 81]. However, further detailed experimental and theoretical studies also on collective flow properties from nucleus-nucleus collisions will be necessary to unravel the various aspects of relativistic many-body systems.

### Acknowledgement

The authors acknowledge inspiring discussions with K. Gallmeister, C. Greiner, C. M. Ko, Z. W. Lin, A. Peshier, K. Redlich, V. D. Toneev and H. Weber. Furthermore, they are indebted to M. Gaździcki and J. Klay for providing experimental data in numerical form. E.L.B. is supported by Deutsche Forschungsgemeinschaft (DFG) and GSI. S.A.B. acknowledges support by RIKEN, Brookhaven National Laboratory and DOE grants DE-FG02-96ER40945 and DE-AC02-98CH10886 as well as an Outstanding Junior Investigator Award (DOE grant DE-FG02-03ER41239). M.B. and M.R. are supported by GSI.

- 
- [1] *Quark Matter 2002*, Nucl. Phys. A **715**, 1 (2003).  
 [2] J. Rafelski and B. Müller, Phys. Rev. Lett. **48**, 1066 (1982); P. Koch, B. Müller and J. Rafelski, Phys. Rep. **142** 167 (1986).  
 [3] F. Karsch *et al.*, Nucl. Phys. B **502**, 321 (2001).  
 [4] H. Stöcker and W. Greiner, Phys. Rep. **137**, 277 (1986).  
 [5] W. Cassing *et al.*, Nucl. Phys. A **674**, 249 (2000).  
 [6] H. Weber, C. Ernst, M. Bleicher *et al.*, Phys. Lett. B **442**, 443 (1998).  
 [7] Z. Fodor and S. D. Katz, JHEP **0203**, 014 (2002); Z. Fodor, S. D. Katz, and K. K. Szabo, Phys. Lett. B **568**, 73 (2003).  
 [8] J.D. Bjorken, Phys. Rev. D **27**, 140 (1983).  
 [9] S. V. Afanasiev *et al.*, NA49 Collaboration, Phys. Rev. C **66**, 054902 (2002).  
 [10] V. Friese *et al.*, NA49 Collaboration, J. Phys. G **30**, 119 (2004).  
 [11] J. L. Nagle and T. S. Ullrich, nucl-ex/0203007.  
 [12] S.S. Adler *et al.*, PHENIX Collaboration, Phys. Rev. Lett. **91**, 072303 (2003); nucl-ex/0308006.  
 [13] J. Adams *et al.*, STAR Collab., Phys. Rev. Lett. **91**, 072304 (2003); *ibid.* **91**, 172302 (2003).  
 [14] I. Arsene *et al.*, Phys. Rev. Lett. **91**, 072305 (2003);  
 [15] X. N. Wang, Phys. Rev. C **58**, 2321 (1998).  
 [16] R. Baier *et al.*, Ann. Rev. Nucl. Part. Sci. **50**, 37 (2000).  
 [17] M. I. Gorenstein, M. Gaździcki, and K. Bugaev, Phys. Lett. B **567**, 175 (2003).  
 [18] M. Gaździcki and M. I. Gorenstein, Acta Phys. Polon. B **30**, 2705 (1999).  
 [19] H. Weber, E. L. Bratkovskaya, W. Cassing, and H. Stöcker, Phys. Rev. C **67**, 014904 (2003).  
 [20] E. L. Bratkovskaya, S. Soff, H. Stöcker, M. van Leeuwen, and W. Cassing, Phys. Rev. Lett., **92**, 032302 (2004).  
 [21] S.A. Bass *et al.*, Prog. Part. Nucl. Phys. **42**, 255 (1998).  
 [22] M. Bleicher *et al.*, J. Phys. G **25**, 1859 (1999).  
 [23] J. Geiss, W. Cassing, and C. Greiner, Nucl. Phys. A **644**, 107 (1998).  
 [24] W. Cassing and E. L. Bratkovskaya, Phys. Rep. **308**, 65 (1999).  
 [25] W. Cassing, K. Gallmeister, and C. Greiner, Nucl. Phys. A **735**, 277 (2004).  
 [26] The HSD transport code is available from: <http://www.th.physik.uni-frankfurt.de/~brat/hsd.html>  
 [27] P. Braun-Munzinger, J. Stachel, J.P. Wessels, and N. Xu, Phys. Lett. B **344**, 43 (1995); *ibid.* **365**,1 (1996); P. Braun-Munzinger, J. Cleymans, H. Oeschler and K. Redlich, Nucl. Phys. A **697**, 902 (2002).  
 [28] L. V. Bravina *et al.*, Phys. Rev. C **60**, 024904 (1999). Nucl. Phys. A **698**, 383 (2002).  
 [29] E. L. Bratkovskaya, W. Cassing, C. Greiner *et al.*, Nucl. Phys. A **675**, 661 (2000).  
 [30] Z. W. Lin *et al.*, Nucl. Phys. A **698**, 375 (2002).

- [31] K. Hagiwara *et al.*, (Review of Particle Properties), Phys. Rev. D **66**, 010001 (2002).
- [32] H.-U. Bengtsson and T. Sjöstrand, Comp. Phys. Commun. **46**, 43 (1987).
- [33] H. Sorge, Phys. Rev. C **52**, 3291 (1995).
- [34] B. Andersson *et al.*, Z. Phys. C **57**, 485 (1993).
- [35] W. Ehehalt and W. Cassing, Nucl. Phys. A **602**, 449 (1996).
- [36] L. Ahle *et al.*, E866 and E917 Collaboration, Phys. Lett. B **476**, 1 (2000); *ibid.* **490**, 53 (2000); Phys. Rev. C **58**, 3523 (1998).
- [37] J. L. Klay *et al.*, E895 Collaboration, Phys. Rev. C **68**, 054905 (2003).
- [38] S. Ahmad *et al.*, E891 Collaboration, Phys. Lett. B **382**, 35 (1996); C. Pinkenburg *et al.*, E866 Collaboration, Nucl. Phys. A **698**, 495c (2002).
- [39] A. Mischke *et al.*, NA49 Collaboration, J. Phys. G. **28**, 1761 (2002); Nucl. Phys. A **715**, 453 (2003).
- [40] F. Antinori *et al.*, WA97 Collaboration, Nucl. Phys. A **661**, 130c (1999).
- [41] M. Gazdzicki *et al.*, NA49 Collaboration, nucl-ex/0403023.
- [42] D. Ouerdane *et al.*, BRAHMS Collaboration, Nucl. Phys. A **715**, 478 (2003); J. H. Lee *et al.*, J. Phys. G **30**, S85 (2004).
- [43] S. S. Adler *et al.*, PHENIX Collaboration, Phys. Rev. C **69**, 024904 (2004); nucl-ex/0307022.
- [44] C. Adler *et al.*, STAR Collaboration, nucl-ex/0206008; O. Barannikova *et al.*, Nucl. Phys. A **715**, 458 (2003); K. Filimonov *et al.*, hep-ex/0306056.
- [45] A. Andronic and P. Braun-Munzinger, hep-ph/0402291.
- [46] P. Crochet *et al.*, FOPI Collaboration, J. Phys. G **27**, 267 (2001).
- [47] M. van Leeuwen *et al.*, NA49 Collaboration, Nucl. Phys. A **715**, 161 (2003).
- [48] E. L. Bratkovskaya, W. Cassing and H. Stöcker, Phys. Rev. C **67**, 054905 (2003).
- [49] H. G. Fischer *et al.*, NA49 Collaboration, Nucl. Phys. A **715**, 118c (2003).
- [50] V. Blobel *et al.*, Nucl. Phys. B **69**, 454 (1974).
- [51] V. Topor Pop, M. Gyulassy, J. Barrette, C. Gale, X.N. Wang, N. Xu, and K. Filimonov, Phys. Rev. C **68**, 054902 (2003).
- [52] T. Abbott *et al.*, E802 Collaboration, Phys. Rev. D **45**, 3906 (1992).
- [53] H. Boggild *et al.*, NA44 Collaboration, Phys. Rev. C **59**, 328 (1999).
- [54] A. Förster *et al.*, KaoS Collab., J. Phys. G **28**, 2011 (2002).
- [55] B. V. Martemyanov *et al.*, nucl-th/0212064.
- [56] S. Soff *et al.*, Phys. Lett. B **471**, 89 (1999).
- [57] J. Dias de Deus, E. G. Ferreira, C. Pajares, and R. Ugocioni, Phys. Lett. B **581**, 156 (2004); hep-ph/0304068.
- [58] J. Geiss, C. Greiner, E.L. Bratkovskaya *et al.*, Phys. Lett. B **447**, 31 (1999).
- [59] E.G. Ferreira, C. Pajares, and D. Sousa, Phys. Lett. B **422**, 314 (1998); M.A. Braun and C. Pajares, Eur. Phys. J. C **16**, 349 (2000).
- [60] M. Bleicher, C. Spieles, C. Ernst *et al.*, Phys. Lett. B **447**, 227 (1999).
- [61] H. van Hecke *et al.*, Phys. Rev. Lett. **81**, 5764 (1998).
- [62] C.E. Copper *et al.*, NA49 Collaboration, Nucl. Phys. A **661**, 362c (1999).
- [63] J.W. Cronin *et al.*, Phys. Rev. D **11**, 3105 (1975).
- [64] D. Antreasyan *et al.*, Phys. Rev. D **19**, 764 (1979).
- [65] B.Z. Kopeliovich, J. Nemchik, A. Schäfer and A.V. Tarasov, Phys. Rev. Lett. **88**, 232302 (2002).
- [66] G. Papp, P. Levai, and G. Fai, nucl-th/0307062.
- [67] I.G. Bearden *et al.*, NA44 Collaboration, nucl-ex/0202019.
- [68] I. Kraus *et al.*, NA49 Collaboration, J. Phys. G **30**, 5583 (2004).
- [69] M. Kliemant, B. Lungwitz, and M. Gaździcki, hep-ex/0308002.
- [70] L. Ahle *et al.*, E866 Collaboration, Nucl. Phys. A **610**, 139c (1966).
- [71] J. Bächler *et al.*, NA49 Collaboration, Nucl. Phys. A **661**, 45c (1999).
- [72] W. Cassing and U. Mosel, Prog. Part. Nucl. Phys. **25**, 235 (1990).
- [73] J. Cleymans and K. Redlich, Phys. Rev. C **60**, 054908 (1999).
- [74] F. Karsch, talk given in *Quark Matter 2004*, Oakland, January 11-17, 2004; <http://qm2004.lbl.gov>
- [75] 'An International Accelerator Facility for Beams of Ions and Antiprotons'; <http://www.gsi.de/GSI-Future/cdr/>.
- [76] E. V. Shuryak, Nucl. Phys. A **661**, 119c (1999).
- [77] M. Bleicher and H. Stöcker, Phys. Lett. B **526**, 309 (2002).
- [78] D. Molnar and M. Gyulassy, Nucl. Phys. A **698**, 379 (2002).
- [79] P. Danielewicz *et al.*, Phys. Rev. Lett. **81**, 2438 (1998).
- [80] P. K. Sahu and W. Cassing, Nucl. Phys. A **712**, 357 (2002).
- [81] E.G. Nikonov, A.A. Shananenko and V.D. Toneev, Heavy Ion Phys. **8**, 89 (1998).