

Wavelet-analysis for Laser Images of Blood Plasma

Yuriy O. USHENKO, Yuriy Ya. TOMKA, Oleksandr V. DUBOLAZOV, Valentine O. BALANETSKA, Artem V. KARACHEVTSEV, Anton-Pavlo ANGELSKY
Chernivtsi National University, 58012, Chernivtsi, Ukraine,
tomka.yuriy@gmail.com

Abstract—The possibilities of the local wavelet-analysis of polarization-inhomogeneous laser image of human blood plasma were considered. The set of statistics, correlation and fractal parameters of the distributions of wavelet-coefficients that are characterize different scales of the polarization maps of polycrystalline networks of amino acids of blood plasma were defined. The criteria for the differentiation of the transformation of birefringence optical-anisotropic structures of blood plasma at different scales of their geometric dimensions were determined.

Index Terms—birefringence, correlation functions, crystal, fractal, polarization, statistical moments, wavelet-analysis.

I. INTRODUCTION

Among many directions of optical diagnostics of organic phase-inhomogeneous objects, a new technique – laser polarimetry [1-32] – has been formed within recent 10 years. It enables to obtain information about optical anisotropy of phase-inhomogeneous objects in the form of coordinate distributions of the biological tissues (BT) azimuths and ellipticities of their object field polarization [1-5].

Specifically, the above mentioned model was used for finding and substantiating the interrelations between the ensemble of statistic moments of the 1st to 4th orders that characterize the orientation-phase structure (distribution of optical axes and phase shifts for directions of protein fibril networks) of birefringent BT architectonics and that of 2D distributions of azimuths and ellipticities of their laser images [5]. It was determined [6-8, 11, 20, 26, 27, 31] that the 3rd and the 4th statistic moments for coordinate distributions of ellipticities are the most sensitive to the change (caused by dystrophic and oncological processes [5-7, 13, 20, 21-23, 28, 30-40]) of optical anisotropy inherent to protein crystals. On this basis, the criteria for early diagnostics of muscle dystrophy, pre-cancer states of connective tissue, collagenosis, etc. were determined.

However, application of statistical analysis to coordinate distributions for azimuths and ellipticities of polarization in BT laser images does not enable to estimate local changes in the structure of optically anisotropic networks formed from protein crystals. On the other hand, in many cases the study of biological liquids (blood, urine, bile, synovial liquid, etc.) is more topical and accessible from the clinical viewpoint than the study of BT. Thereof, the task to develop new approaches to a local analysis of polarization-inhomogeneous images of biological liquids seems rather reasonable.

Our work is aimed at studying capabilities of the wavelet analysis [18, 32] in determination of statistical (statistical moments of the first to fourth orders) as well as fractal

(fractal dimensionalities [6, 7, 26, 27]) parameters that characterize distributions of wavelet coefficients for images of blood plasma for diagnostics of oncological processes in a human organism.

II. POLARIZATION MODELING OF PROPERTIES INHERENT TO NETWORKS OF BIOLOGICAL LIQUID CRYSTALS IN BLOOD PLASMA

As a base for analyses of processes providing formation of polarization-inhomogeneous images of blood plasma, we use the optical model developed in [5, 9, 10, 13, 14, 17, 20, 24-26, 28, 30]:

- optical properties of blood plasma are determined as those of a two-component amorphous-crystalline structure;
- crystalline component is an architectonic net consisting of amino-acid liquid crystals;
- optically, the amino-acid liquid crystals possess the properties of uniaxial birefringent crystals.

Polarization properties of local optically coaxial crystalline amino acid can be described with the following Mueller operator $\{z\}_u$ [5-7, 10, 11, 17, 30, 31]

$$\{z\}_u = \begin{pmatrix} 1 & 0 & 0 & 0 \\ 0 & z_{22} & z_{23} & z_{24} \\ 0 & z_{32} & z_{33} & z_{34} \\ 0 & z_{42} & z_{43} & z_{44} \end{pmatrix}, \quad (1)$$

where

$$z_{ik}(\rho, \delta) = \begin{cases} z_{22} = \cos^2 2\rho + \sin^2 2\rho \cos \delta, \\ z_{23,32} = \cos 2\rho \sin 2\rho (1 - \cos \delta), \\ z_{33} = \sin^2 2\rho + \cos^2 2\rho \cos \delta, \\ z_{34,43} = \pm \cos 2\rho \sin \delta, \\ z_{24,42} = \pm \sin 2\rho \sin \delta, \\ z_{44} = \cos \delta. \end{cases} \quad (2)$$

Here, ρ is the direction of optical axis, $\delta = 2\pi/\lambda \Delta n d$ – phase shift introduced between the orthogonal components of the amplitude of laser wave with the length λ passing through the liquid crystal with the linear size of its geometrical section d and birefringence index Δn .

Mueller matrix f_{ik} elements of liquid crystal network are determined by the following algorithm

$$f_{ik} = \sum_{u=1}^N [z_{ik}(\rho, \delta)]_u, \quad (3)$$

where N is a finite number of liquid crystals.

The classical definition of the Mueller matrix $\{F\}$ for biological objects consists not only in the fact that it describes optical properties of their optically anisotropic component, but also in the fact that such mathematical operator completely characterizes the processes of transformation of the Stokes vector S by phase-inhomogeneous layers [13, 20, 28]

$$S^* = \{F\}S_0. \quad (4)$$

Here, S_0, S^* are the Stokes vectors of illuminating and object beams.

For a more general state of elliptically polarized wave, the Stokes vector looks as follows

$$S_0 = \begin{pmatrix} 1 \\ \cos 2\alpha_0 \cos 2\beta_0 \\ \sin 2\alpha_0 \cos 2\beta_0 \\ \sin 2\beta_0 \end{pmatrix}, \quad (5)$$

where α_0, β_0 are the azimuth and ellipticity of an electromagnetic wave.

Taking into account the expressions (2) to (5), the Stokes vector S^* can be written in a complete form as

$$S^* = \begin{pmatrix} 1 \\ S_2 \\ S_3 \\ S_4 \end{pmatrix} = \begin{pmatrix} 1 \\ f_{22} \cos 2\alpha_0 \cos 2\beta_0 + f_{23} \sin 2\alpha_0 \cos 2\beta_0 + f_{24} \sin 2\beta_0 \\ f_{32} \cos 2\alpha_0 \cos 2\beta_0 + f_{33} \sin 2\alpha_0 \cos 2\beta_0 + f_{34} \sin 2\beta_0 \\ f_{42} \cos 2\alpha_0 \cos 2\beta_0 + f_{43} \sin 2\alpha_0 \cos 2\beta_0 + f_{44} \sin 2\beta_0 \end{pmatrix} = \begin{pmatrix} 1 \\ \cos 2\alpha \cos 2\beta \\ \sin 2\alpha \cos 2\beta \\ \sin 2\beta \end{pmatrix} \quad (6)$$

Being based on (6), we obtain expressions for determining the ellipticity β of the object electromagnetic field polarization

$$\beta = 0.5 \arcsin(S_4) \equiv Q[f_{ik}(\rho, \delta), \alpha_0, \beta_0]. \quad (7)$$

It follows from the analysis of relation (7) that the state of polarization (β) of each point ($r \equiv x, y$) of the BT image is determined by corresponding local orientation-phase (ρ, δ) parameters of crystalline network.

In other words, on the terms of coordinate heterogeneity of distributions $\rho(r)$ and $\delta(r)$ in the plane of the BT layer a certain polarizationally inhomogeneous image is formed

with distribution $\beta(r)$ called as polarization map (PM) [5, 23, 28 30].

III. WAVELET APPROACH TO THE ANALYSIS OF DISTRIBUTIONS FOR ELLIPTICITY OF POLARIZATION OF LASER IMAGES INHERENT TO BLOOD PLASMA

If a prototype function is taken as a specific wavelet function possessing a finite base both in coordinate and frequency spaces, then one can expand into series [18, 32] the one-dimensional distribution of ellipticity $\beta(x)$ for polarization

$$\beta(x) = \sum_{a,b=-\infty}^{\infty} C_{ab} \Psi_{ab}(x), \quad (8)$$

where $\Psi_{ab}(x) = \Psi(ax - b)$ is a base function formed from the function-prototype by shifting b and scaling a , while the coefficients of this expansion are determined as follows

$$C_{ab} = \int \beta(x) \Psi_{ab}(x) dx. \quad (9)$$

The result of this wavelet transformation for the one-dimensional distribution of polarization parameters is a two-dimensional array of the coefficients $W_\beta(a, b)$ that are defined by the following relation

$$W(a, b) = \frac{1}{|a|^{1/2}} \int_{-\infty}^{+\infty} f(\beta) \Psi\left(\frac{x-b}{a}\right) dx. \quad (10)$$

In our work, as a wavelet function we have used the so-called MHAT function, i.e. the second derivative of the Gauss function. It has been shown that MHAT wavelet possesses a narrow energy spectrum and two moments (zero and first) that are equal to zero. It satisfies the analysis of complex signals rather well. The mathematical expression for the MHAT wavelet is of the following form

$$\Psi(x) = \frac{d^2}{dx^2} e^{-x^2/2} = (1 - x^2) e^{-x^2/2}. \quad (11)$$

To estimate $W_\beta(a, b = 1, 2, \dots, m)$ distributions for various scales a of the wavelet function Ψ , we calculated the set of their statistical moments of the first to fourth orders $M_{j=1;2;3;4}$ [6, 7, 26, 31]

$$M_1 = \frac{1}{m} \sum_{i=1}^m |W_i|, \quad M_2 = \sqrt{\frac{1}{m} \sum_{i=1}^m W_i^2}, \quad (12)$$

$$M_3 = \frac{1}{M_2^3} \frac{1}{m} \sum_{i=1}^m W_i^3, \quad M_4 = \frac{1}{M_2^4} \frac{1}{m} \sum_{i=1}^m W_i^4.$$

To calculate autocorrelation functions $W_\beta(a, b = 1, 2, \dots, m)$ related with wavelet coefficients for distributions of

azimuths and ellipticity of laser image polarization, we used the following expression [19, 22, 27]

$$K(\Delta x) = \lim_{x \rightarrow 0} \frac{1}{N} \int_0^x [W(a; x = 1 \div m)] [W(a; x - \Delta x)] dx. \quad (13)$$

Here, (Δx) is the step of changing the coordinate (b) for one-dimensional distributions of ellipticity β of polarization.

The fractal analysis of $W_\beta(a, b = 1, 2, \dots, m)$ distributions was performed using calculation of logarithmic dependences $\log J(W) - \log d^{-1}$ for power spectra $J(W)$ [6, 26]

$$J(W) = \int_{-\infty}^{+\infty} W_{a,b}(\beta) \cos 2\pi \nu d \nu, \quad (14)$$

where $\nu = d^{-1}$ are spatial frequencies determined by geometrical sizes (d) of structural elements of the laser images for a biological layer.

The dependences $\log J(W) - \log(d^{-1})$ are approximated using the least-squares method by the curves $\Phi(\eta)$, the straight parts of which are used to determine the slope angles η and to calculate the value of fractal dimensionality D via the relation [26]

$$D = 3 - \text{tg } \eta. \quad (15)$$

Classification of $W_\beta(a, b = 1, 2, \dots, m)$ distributions is performed using the following criteria offered in [5-7]:

- these distributions are fractal, on the condition that the slope angle has a constant value $\eta = \text{const}$ in the dependence $\Phi(\eta)$ within 2 or 3 decades in changing sizes d ;
- the distributions are multi-fractal, on the condition of availability of several constant values for slope angles in $\Phi(\eta)$;
- the distributions are random, if there is no stable slope angle in $\Phi(\eta)$ over the whole range of changing sizes d .

IV. OPTICAL SCHEME OF THE POLARIMETER AND TECHNIQUE OF POLARIMETRIC INVESTIGATIONS

Figure 1 shows the traditional optical scheme of a polarimeter for measuring the set of coordinate distributions for azimuths and ellipticity of polarization of laser images inherent to human blood plasma [5, 24].

Illumination was made with a collimated beam (radius $r = 10$ mm) of He-Ne laser 1 ($\lambda = 0.6328 \mu\text{m}$). Using the polarization illuminator (quarter-wave plates 3, 5 and polarizer 4) we formed respective states for polarization of illuminating beam: 1 - 0^0 ; 2 - 90^0 ; 3 - 45^0 ; 4 - \otimes (right circulation).

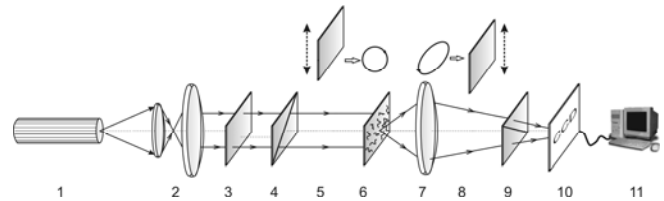


Figure 1. Optical scheme of the polarimeter. 1 – He-Ne laser; 2 – collimator; 3 – stationary quarter-wave plate; 5, 8 – movable quarter-wave plates; 4, 9 – polarizer and analyzer, respectively; 6 – object under investigation; 7 – micro-objective; 10 – CCD camera; 11 – personal computer.

The image of blood plasma layer was formed within the light-sensitive area ($800 \text{ pix} \times 600 \text{ pix}$) of CCD camera 10 by using the micro-objective 7.

For each separate pixel, we determined four parameters of the Stokes vector

$$\begin{aligned} S_1 &= I_0 + I_{90}; \\ S_2 &= I_0 - I_{90}; \\ S_3 &= I_{45} - I_{135}; \\ S_4 &= I_{\otimes} - I_{\oplus}. \end{aligned} \quad (16)$$

Here, $I_0, I_{90}, I_{45}, I_{135}$ are the intensities of linearly (with the azimuths $0^0, 90^0, 45^0, 135^0$) as well as left- I_{\oplus} and right- I_{\otimes} circularly polarized radiation transmitted by the system of the quarter-wave 8 – polarizer 9.

The values of azimuth and ellipticity of polarization were calculated using the following algorithms

$$\beta(m \times n) = 0,5 \arcsin \left[\frac{S_4(m \times n)}{S_1(m \times n)} \right], \quad (17)$$

The coordinate sets of values $\beta \begin{pmatrix} r_{11} & \dots & r_{1n} \\ \dots & \dots & \dots \\ r_{m1} & \dots & r_{mn} \end{pmatrix}$ we shall

name as polarization map.

IV. BRIEF CHARACTERISTIC OF THE OBJECTS UNDER INVESTIGATION

The main optically anisotropic elements of blood plasma are albumin and globulin that form networks of liquid crystals in the process of crystallization. The structure of these networks is superposition of albumin crystals with spatially ordered directions of optical axes and spatially disordered globulin crystals.

The above model assumptions can be qualitatively illustrated by the results of comparative investigation of structures in laser images of blood plasma taken from healthy and sick patients (figure 2).

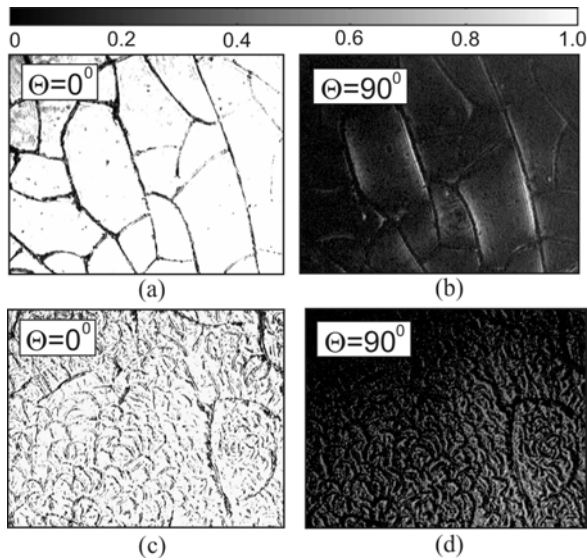


Figure 2. Polarization images of liquid-crystalline optically anisotropic network inside blood plasma of healthy (a), (b) and sick (c), (d) patients

As seen from these images, the blood plasma of a healthy patient is characterized with domination of a large-scale network consisting of albumin crystals with ordered directions of their optical axes. In the laser images of the blood plasma taken from a patient with cervical carcinoma, one can observe domination of small-scale disordered networks consisting of albumin crystals.

V. POLARIZATION MAPS FOR LASER IMAGES OF HUMAN BLOOD PLASMA

Figure 3 illustrate coordinate distributions of ellipticity $\beta(m \times n)$ (figure 3a,e) of polarization; histograms of distributions for their values $h(\beta)$ (figure 3b,f); autocorrelation functions $K(\Delta x)$ for $\beta(m \times n)$ distributions (figure 3c,g); as well as logarithmic dependences $\log J(\beta) - \log d^{-1}$ (figure 3d,h) for polarization maps of blood plasma taken from healthy (left column – fragments a,b,c,d) and sick (right column – fragments e,f,g,h) patients.

The analysis of coordinate distributions for ellipticity $\beta(m \times n)$ (figure 3a) has shown that they contain two components:

- large-scale (100 to 300 μm) parts with homogeneous polarization (images of the optically isotropic component in human blood plasma) that coincides with that of laser beam $\alpha^* = \alpha_0 = 0^0$;
- polarization-inhomogeneous parts $\beta(\Delta x, \Delta y) = \text{const}$ - laser images of elements (2 to 50 μm) of albumin and globulin crystalline network.

Quantitatively this structure of polarization maps for blood plasma of both types can be illustrated with histograms $h(\beta)$ that are dependences symmetrical relatively to the main extrema at $\alpha = 0^0$; $\beta = 0^0$.

Summarized in Table 1 are the values and ranges for statistical moments of the first to fourth orders that characterize distributions $\beta(m \times n)$ within the limits of two groups of healthy ($q=21$) and oncologically sick ($q=19$) patients.

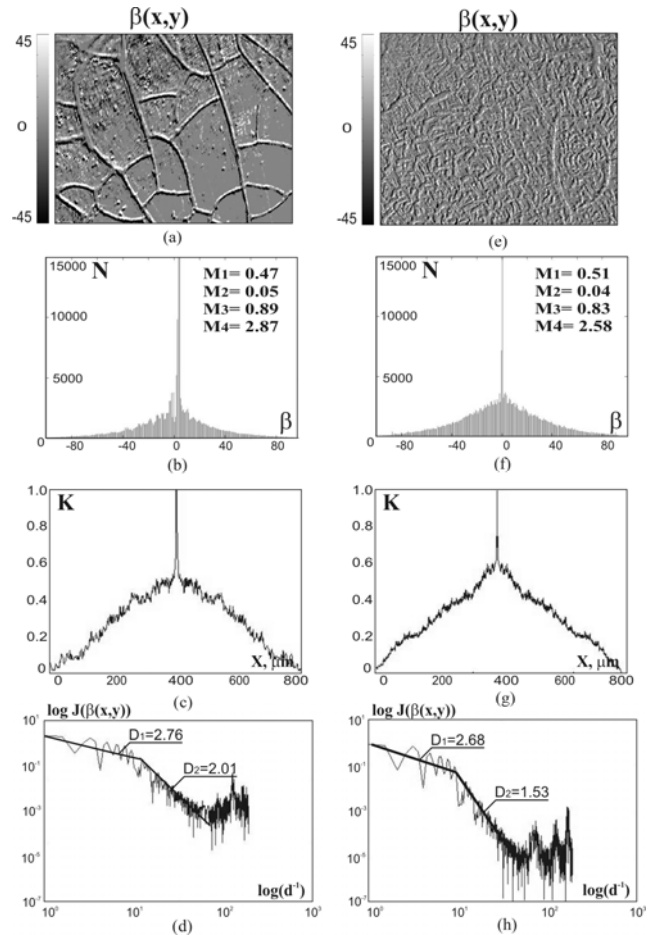


Figure 3. Polarization maps for ellipticity $\beta(m \times n)$ (a,e), their statistical (b,f), correlation (c,g), and fractal (d,h) parameters of blood plasma taken from healthy (left column) and oncologically sick (right column) patients

TABLE 1. STATISTICAL MOMENTS OF THE FIRST TO FOURTH ORDERS FOR DISTRIBUTIONS OF POLARIZATION PARAMETERS IN LASER IMAGES OF HUMAN BLOOD PLASMA IN DIFFERENT PHYSIOLOGICAL STATES OF PATIENTS

$M_j(\beta)$	Norm ($q=21$)	Oncology ($q=19$)
$M_1(\beta)$	0.47 ± 0.055	0.51 ± 0.058
$M_2(\beta)$	0.05 ± 0.007	0.04 ± 0.006
$M_3(\beta)$	0.89 ± 0.09	0.83 ± 0.094
$M_4(\beta)$	2.87 ± 0.33	2.58 ± 0.31

Our comparative analysis of the data obtained did not reveal sufficiently reliable criteria (within the framework of statistical approach) for differentiation of coordinate structure in polarization maps for blood plasma of both types. The values and ranges for changing the whole set of statistical moments $M_{j=1,2,3,4}$ related to distributions of β ellipticity of polarization are superimposed.

Correlation and fractal analyses of polarization maps describing blood plasma taken from healthy and oncologically sick patients revealed a fractal structure inherent to coordinate distributions of ellipticity $\beta(m \times n)$ of polarization within the range of mean (50 to 200 μm) and large (200 to 2000 μm) geometrical sizes of amino acid biological crystals. The approximating curves $\Phi(\eta)$ for dependences $\log J(\beta) - \log d^{-1}$ (figure 3d,h) are

characterized with stable values of slope angles

$$\eta(\beta) \rightarrow \begin{cases} D_{\beta(1)} = 2,76; D_{\beta(1)}^* = 2,68; \\ D_{\beta(2)} = 2,01; D_{\beta(2)}^* = 1,53. \end{cases}$$

In the field of small geometric sizes (2 to 50 μm) of the polycrystalline network inherent to amino acids in human blood plasma for the patient with cervical carcinoma, the values of fractal dimensionalities D_{β}^* for distributions of polarization parameters become indefinite. $\Phi_{\beta}(\eta)$ dependences within this range of sizes inherent to amino acid crystals are curve without any definite slope angle - $\eta(2...50 \mu\text{m}) \neq \text{const}$.

In our opinion, this "destruction" of self-similarity for the distributions $\beta(m \times n)$ in polarization maps inherent to blood plasma of oncologically sick patient is related with formation of a network of small-scale globulin crystals (Fig. 2c,d). By other words, to determine a set of objective criteria for differentiation of polycrystalline networks of both types, one needs a more detailed analysis of polarization distributions just for these scales of geometrical sizes of biological crystals.

VI. WAVELET ANALYSIS OF POLARIZATION DISTRIBUTIONS OF LASER IMAGES FOR POLYCRYSTALLINE NETWORKS IN BLOOD PLASMA

The locally-scaled analysis of coordinate distributions $\beta(m \times n)$ for laser images of blood plasma is provided using linear $k_1, \dots, k_m, k = 1 \div n$ scanning by the MHAT wavelet with the step $b = 1 \text{ pix}$ and window width $1 \mu\text{m} \leq a_{\min} \leq 70 \mu\text{m}$. The result of this scanning can be represented (see relation (11)) as a two-dimensional set of wavelet coefficients

$$W_{a,b} = \begin{pmatrix} W(a_{\min}, b_1) & \dots & W(a_{\min}, b = m) \\ \dots & \dots & \dots \\ W(a_{\max}, b_1) & \dots & W(a_{\max}, b = m) \end{pmatrix} \text{ for each } k - \text{th}$$

line of pixels (figure 4a,e) in the light-sensitive area of CCD 10 (figure 1).

Thus, the obtained set of wavelet coefficients $W(a_{\min}; b = k_1 \div k_m)$ should be averaged using the following algorithm

$$\bar{W}_{a,b} = \begin{pmatrix} \bar{W}(a_{\min}, b_1) = \frac{\sum_{j=1}^m W_j(a_{\min}, b_1)}{m} & \dots & \bar{W}(a_{\min}, b = m) = \frac{\sum_{j=1}^m W_j(a_{\min}, b = m)}{m} \\ \dots & \dots & \dots \\ \bar{W}(a_{\max}, b_1) = \frac{\sum_{j=1}^m W_j(a_{\max}, b_1)}{m} & \dots & \bar{W}(a_{\max}, b = m) = \frac{\sum_{j=1}^m W_j(a_{\max}, b = m)}{m} \end{pmatrix} \quad (18)$$

The algorithm (18) is an analog of two-dimensional wavelet transformation that characterizes coordinate distributions for ellipticity $\beta(m \times n)$ (Fig. 3a,e) of polarization observed in laser images within the range of small scales $1 \mu\text{m} \leq a_{\min} \leq 70 \mu\text{m}$ in polycrystalline structures of blood plasma.

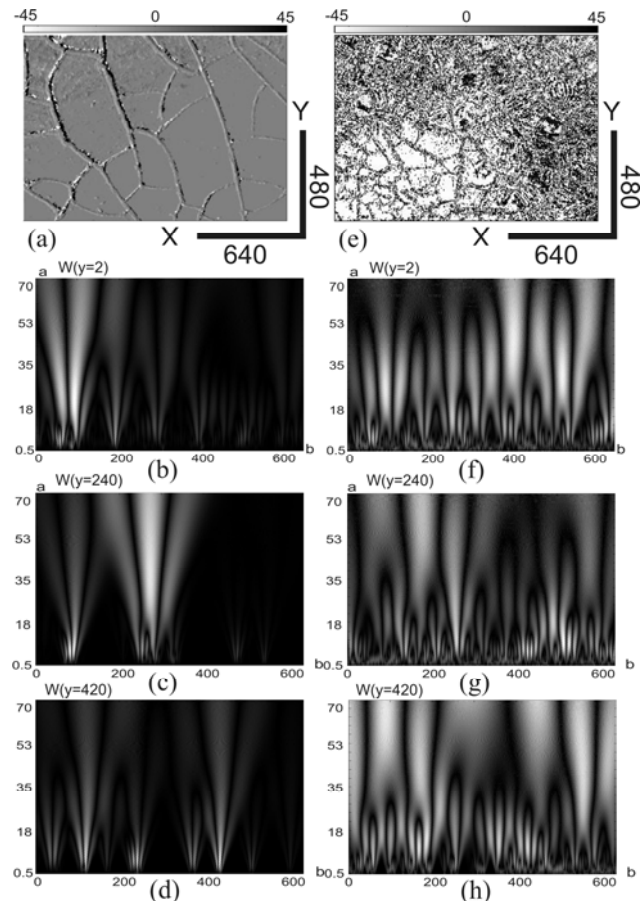


Figure 4. Distributions of wavelet coefficients $W(a_{\min}; b = k_1 \div k_m)$ of the polarization map for ellipticity $\beta(m \times n)$ of polarization observed in blood plasma of a healthy (left column) and sick (right column) patient's blood plasma for various lines $k = 2, 240, 420$ of CCD-camera

Shown in figures 5 and 6 are the results of experimental investigations of statistical (statistical moments of the 1-st to 4-th orders $M_{j=1,2,3,4}(W_{a,b})$, correlation (autocorrelation functions $K(W_{a,b})$) and fractal (logarithmic dependences of the power spectra $\log J(W_{a,b}) - \log d^{-1}$) parameters that characterize the distributions $W(a_{\min}; b = k_1 \div k_m)$ for two scales $a_{\min} = 2 \mu\text{m}; a_{\min} = 30 \mu\text{m}$ of the MHAT wavelet for polarization maps $\beta(m \times n)$ describing blood plasma of a healthy (left column) and sick (right column) patients.

As seen from the data obtained, the distributions for wavelet coefficients $\bar{W}[(a_{\min} = 2 \mu\text{m}; 30 \mu\text{m}); (b = k_1 \div k_m)]$ of polarization maps for the polycrystalline network of amino acids from healthy patient's blood plasma, which is ordered along directions of optical axis (figure 2a), are individual for each scale a_{\min} of the MHAT wavelet.

Our statistical analysis (figures 5 and 6) of the distributions $\bar{W}[(a_{\min} = 2 \mu\text{m}; 30 \mu\text{m}); (b = k_1 \div k_m)](\beta)$ revealed different dynamics for changing the values $M_{j=1,2,3,4}$ (fragments a,d) with increasing the scale a_{\min} of the MHAT wavelet. The ranges of changes in statistical moments of the 1-st to 4-th orders lie within the limits of $M_3 = 2 \div 6$ and $M_4 = 3 \div 11$ times, respectively. The found tendency is indicative of transformation observed for distributions of wavelet

coefficients from practically random ($M_{1;2} \gg M_{3;4} \rightarrow 0$) up to the stochastic ones ($M_{3;4} \gg M_{1;2}$).

This fact is also confirmed by the dependences (Figures 5 and 6, fragments a,d) of the autocorrelation functions $K\{\overline{W}[(a_{\min}=2\mu m; 10\mu m; 30\mu m); (b=k1\div km)](\beta)\}$ for the distributions of wavelet coefficients, as they are superposition of two components, namely: statistical that drops monotonically, and the oscillating one that is caused by periodical coordinate changes in these distributions.

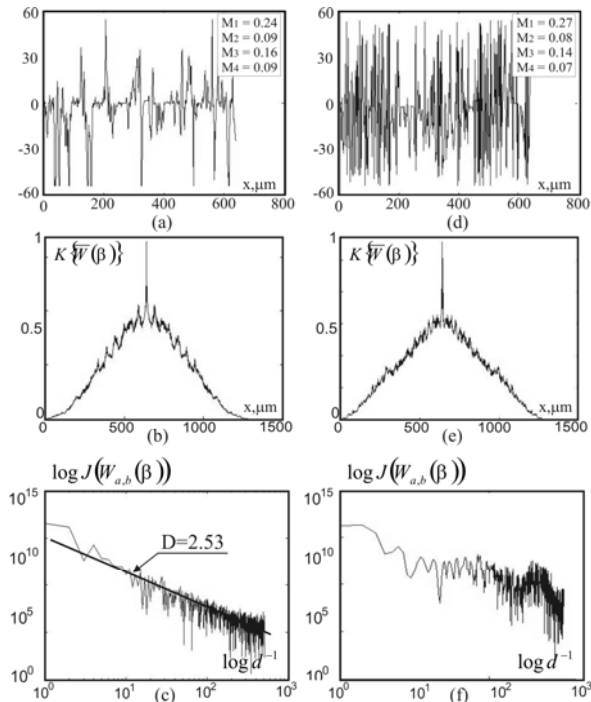


Figure 5. Statistical (left column), correlation (central column) and fractal (right column) parameters of distributions inherent to wavelet coefficients $\overline{W}[(a_{\min}=2\mu m); (b=k1\div km)]$ describing the polarization map for $\beta(m \times n)$ of a healthy (left column) and sick (right column) patient's blood plasma

The revealed features of statistical and coordinate structures in distributions of wavelet coefficients for polarization maps describing healthy patient's blood plasma are related, in our opinion, with a different degree of self-similarity in distributions of optical axis directions ρ and phase shifts δ in polycrystalline structures at different scales of analysis a_{\min} of the MHAT wavelet. So, for small scales ($a_{\min}=2\mu m$), a dominant contribution to formation of the coordinate distributions $\beta(m \times n)$ is caused by chaotically oriented globulin crystals. Therefore, just the random component dominates in the respective distributions for wavelet coefficients $\overline{W}[(a_{\min}=2\mu m); (b=k1\div km)](\beta)$.

When the scale grows ($a_{\min}=30\mu m$), also growing is the contribution to formation of distributions for polarization parameters of the set oriented along directions of optical axes of albumin crystals. From the statistical viewpoint, this process should be observed in the growth of statistical moments of the 3-rd and 4-th orders that characterize the distributions $\overline{W}[(a_{\min}=30\mu m); (b=k1\div km)](\beta)$, as well as in formation of oscillations of autocorrelation dependences $K\{\overline{W}(\beta)\}$.

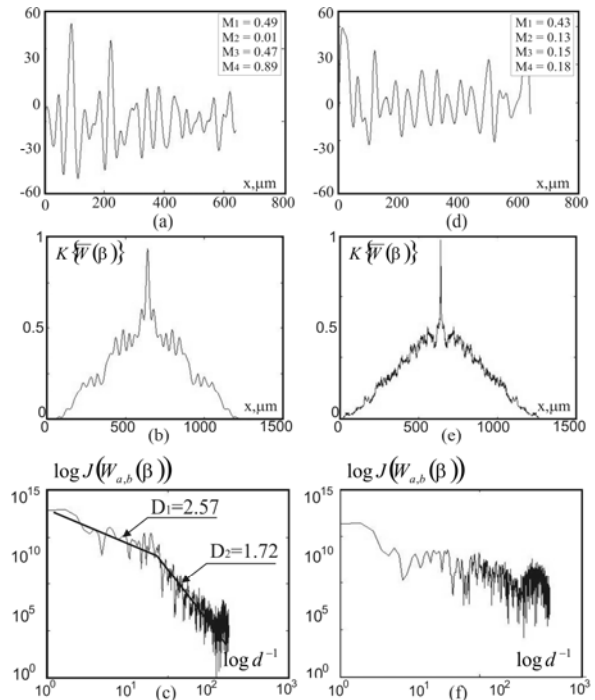


Figure 6. Statistical (left column), correlation (central column) and fractal (right column) parameters of distributions inherent to wavelet coefficients $\overline{W}[(a_{\min}=30\mu m); (b=k1\div km)]$ describing the polarization map for $\beta(m \times n)$ of a healthy (left column) and sick (right column) patient's blood plasma

Besides, some stable slope η of approximating curves $\Phi(\eta)$ for $a_{\min}=2\mu m$ in the logarithmic dependences $\log J(W_{a,b}(\beta)) - \log d^{-1}$ is absent. The growth in the scale ($a_{\min}=30\mu m$) of the MHAT wavelet can be observed in transformation of the random curves $\Phi(\eta)$ into polygonal lines (figures 5 and 6, fragments c,f). In other words, the random distributions $\overline{W}[(a_{\min}=2\mu m); (b=k1\div km)](\beta)$ are transformed into the multi-fractal ones.

Our analysis of the data obtained for statistical, correlation and fractal parameters that characterize sets of wavelet coefficients for various scales of MHAT functions for distributions of ellipticity $\beta(m \times n)$ of laser images of the albumin-globulin polycrystalline network in blood plasma of a patient with cervical carcinoma enabled us to find:

- 1) Weak changes (within 10 to 15%) of the values of statistical moments $M_{j=1;2;3;4}$ that characterize the distributions $\overline{W}[(a_{\min}=2\mu m); (b=k1\div km)](\beta)$ on the scales $a_{\min}=2\mu m$ of the MHAT wavelet as compared with analogous statistical parameters determined for polarization maps of healthy patient's blood plasma.
- 2) An essential decrease of statistical moments of the 3-rd (2.7 to 3.5 times) and 4-th (3.4 to 5.7 times) orders for the distributions $\overline{W}[(a_{\min}=2\mu m; 10\mu m; 30\mu m); (b=k1\div km)](\beta)$ determined on larger scales ($a_{\min}=30\mu m$) of the MHAT wavelet.
- 3) A faster drop in the autocorrelation dependences $K\{\overline{W}(\beta)\}$ as well as decrease in their fluctuation amplitudes.

4) The absence of any stable slope of the approximating curves $\Phi(\eta)$ for the logarithmic dependences $\log J(W_{a,b}(\beta)) - \log d^{-1}$ determined on all the scales of the MHAT wavelet.

The above mentioned differences between statistical moments, autocorrelation functions and logarithmic dependences that characterize the distributions $\overline{W}_{[(a_{\min}=30\mu m);(b=k1\div km)]}(\beta)$ can be related with growth of the albumin concentration in blood plasma of a patient with the oncological process.

This biochemical process results in growth of the birefringence coefficient for partial albumin crystals disordered as to directions of their optical axes. And this transformation of the polycrystalline structure begins from small sizes ($d = 1\mu m \div 50\mu m$) of structural elements in the polycrystalline network.

From the viewpoint of polarization, these processes become apparent via formation of random distributions for ellipticity $\beta(m \times n)$ (figure 3e) in respective blood plasma laser images obtained in the case of an oncologically sick patient. It results in decrease of the values inherent to statistical moments of the 3-rd and 4-th orders that characterize the distributions $\overline{W}_{[(a_{\min}=2\mu m;30\mu m);(b=k1\div km)]}(\beta)$ on all the scales a_{\min} of the MHAT wavelet.

Due to the same reason, autocorrelation functions experience faster drop of their intrinsic values, while the approximating curves $\Phi(\eta)$ for the logarithmic dependences $\log J(W(\beta)) - \log d^{-1}$ are characterized with the absence of a stable slope angle.

TABLE 2. STATISTICAL MOMENTS OF THE 1-ST TO 4-TH ORDERS FOR DISTRIBUTIONS OF WAVELET COEFFICIENTS RELATED TO POLARIZATION MAPS FOR ELLIPTICITY $\beta(m \times n)$ OF LASER IMAGES DESCRIBING BLOOD PLASMA OF A HEALTHY PATIENT AND ONCOLOGICALLY SICK

$a_{\min} = 2$	M_1	0.24 ± 0.028	0.27 ± 0.032
	M_2	0.09 ± 0.01	0.08 ± 0.009
	M_3	0.16 ± 0.024	0.14 ± 0.018
	M_4	0.09 ± 0.009	0.07 ± 0.0085
$a_{\min} = 30$	M_1	0.49 ± 0.053	0.43 ± 0.051
	M_2	0.1 ± 0.017	0.13 ± 0.017
	M_3	0.47 ± 0.058	0.15 ± 0.019
	M_4	0.89 ± 0.092	0.16 ± 0.018

Possibilities to diagnose pathological processes in a human organism by using the wavelet analysis of polarization maps for ellipticity of laser images describing blood plasma have been illustrated in Table 2, where the values of statistical moments that characterize distributions on three scales a_{\min} of the MHAT wavelet for two groups of healthy (21 samples) and sick (19 samples) patients are summarized.

VII. CONCLUSION

Thus, we have demonstrated diagnostic efficiency of the wavelet analysis applied to coordinate distributions for

ellipticity of polarization in laser images inherent to amino acid polycrystalline networks in blood plasma of patients with oncological changes in woman's genital organs.

REFERENCES

- [1] J.F. de Boer and T.E. Milner, "Review of polarization sensitive optical coherence tomography and Stokes vector determination," J. Biomed. Opt., Vol. 7, pp. 359-371, 2002.
- [2] J.F. de Boer, T.E. Milner and J.S. Nelson, "Trends in Optics and Photonics (TOPS): Advances in Optical Imaging and Photon Migration," Washington: OSA, 1998.
- [3] M. J. Everett, K. Shoenenberger, B. W. Colston and L. B. da Silva, "Birefringence characterization of biological tissue by use of optical coherence tomography," Opt. Lett., Vol. 23, pp. 228-230, 1998.
- [4] J. Shuliang, Yu. Wurong, G. Stoica and V. Lihong, "Optical fiber based Mueller optical coherence tomography," Opt. Lett., Vol. 28, pp. 1206-1208, 2003.
- [5] Alexander G. Ushenko and Vasilii P. Pishak, "Laser Polarimetry of Biological Tissue: Principles and Applications", in Handbook of Coherent-Domain Optical Methods: Biomedical Diagnostics, Environmental and Material Science, vol. I, Valery V. Tuchin, Ed. Boston: Kluwer Academic Publishers, 2004, pp. 93-138.
- [6] O. V. Angelsky, A. G. Ushenko, Yu. A. Ushenko, V. P. Pishak, "Statistical and Fractal Structure of Biological Tissue Mueller Matrix Images", in Optical Correlation Techniques and Applications, Oleg V. Angelsky, Ed. Washington: Society of Photo-Optical Instrumentation Engineers, 2007, pp. 213-266.
- [7] O.V. Angelsky, A.G. Ushenko, Yu.A. Ushenko, V.P. Pishak, and A.P. Peresunko, "Statistical, Correlation, and Topological Approaches in Diagnostics of the Structure and Physiological State of Birefringent Biological Tissues", in Handbook of Photonics for Biomedical Science, Valery V. Tuchin, Ed. USA: CRC Press, 2010, pp. 21-67.
- [8] Alexander G. Ushenko, "Polarization structure of laser scattering fields," Optical Engineering, vol. 34(4), pp. 1088-1093, November 1995.
- [9] A.G. Ushenko, "Laser diagnostics of biofractals," Quantum Electronics, vol. 29(12), pp. 1078-1084, December 1999.
- [10] O.V. Angel'skii, A.G. Ushenko, A.D. Arkhelyuk, S.B. Ermolenko, D.N. Burkovets, "Structure of matrices for the transformation of laser radiation by biofractals," Quantum Electronics, vol. 29(12), pp. 1074-1077, December 1999.
- [11] O.V. Angel'skii, A.G. Ushenko A.D. Arheluk, S.B. Ermolenko, D. N. Burkovets, "Scattering of Laser Radiation by Multifractal Biological Structures," Optics and Spectroscopy, vol. 88(3), pp. 444-448, March 2000.
- [12] A.G. Ushenko, "Polarization Structure of Biospeckles and the Depolarization of Laser Radiation," Optics and Spectroscopy, vol. 89(4), pp. 597-601, October 2000.
- [13] A.G. Ushenko, "Stokes-correlometry of biotissues," Laser Physics, vol. 10(5), pp.1286-1292, May 2000.
- [14] A.G. Ushenko, "The Vector Structure of Laser Biospeckle Fields and Polarization Diagnostics of Collagen Skin Structures," Laser Physics, vol. 10(5), pp. 1143-1149, May 2000.
- [15] A.G. Ushenko, "Laser polarimetry of polarization-phase statistical moments of the object field of optically anisotropic scattering layers," Optics and Spectroscopy, vol. 91(2), pp. 313-316, February 2001.
- [16] A.G. Ushenko, "Polarization contrast enhancement of images of biological tissues under the conditions of multiple scattering," Optics and Spectroscopy, vol. 91(6), pp. 937-940, August 2001.
- [17] A.G. Ushenko, "Laser probing of biological tissues and the polarization selection of their images," Optics and Spectroscopy, vol. 91(6), pp.932-936, August 2001.
- [18] A.G. Ushenko, "Correlation processing and wavelet analysis of polarization images of biological tissues," Optics and Spectroscopy, vol. 91(5), pp.773-778, June 2002.
- [19] A.G. Ushenko, "Polarization correlometry of angular structure in the microrelief pattern or rough surfaces," Optics and spectroscopy, vol. 92(2), pp. 227-229, June 2002.
- [20] O.V. Angelsky, A.G. Ushenko, Ye.G. Ushenko, "2-D Stokes Polarimetry of Biospeckle Tissues Images in Pre-Clinic Diagnostics of Their Pre-Cancer States," Journal of Holography and Speckle, vol. 2(1), pp. 26-33, April 2005.
- [21] Oleg V. Angelsky, Alexander G. Ushenko, and Yevheniya G. Ushenko, "Complex degree of mutual polarization of biological tissue coherent images for the diagnostics of their physiological state," J. Biomed. Opt., vol. 10(6), Article ID 060502, November 2005.

- [22] O. V. Angelsky, A. G. Ushenko, and Ye. G. Ushenko, "Investigation of the correlation structure of biological tissue polarization images during the diagnostics of their oncological changes," *Physics in Medicine and Biology*, vol. 50(20), pp. 4811-4822, September 2005.
- [23] Oleg V. Angelsky, Alexander G. Ushenko, Yevheniya G. Ushenko, Yuriy Y. Tomka, "Polarization singularities of biological tissues images," *J. Biomed. Opt.*, vol. 11(5), Article ID 054030, September-October 2006.
- [24] O.G. Ushenko, S.G. Guminetsky, A.V. Motrich, "Optical properties of urine, blood plasma and pulmonary condensate of the patients with pulmonary form of tuberculosis," *Photoelectronics*, vol.16, pp. 133-139, June 2007.
- [25] S.H. Guminetskiy, O.G. Ushenko, I.P. Polyanskiy, A.V. Motrych, F.V. Grynychuk, "The optical method for investigation of the peritonitis progressing process," *Proceedings of the SPIE*, vol. 7008, Article ID 700827, April 2008.
- [26] Alexander Ushenko, Sergej Yermolenko, Alexander Prydij, Stepan Guminetsky, Ion Gruia, Ovidiu Toma, Konstantin Vladychenko, "Statistical and fractal approaches in laser polarimetry diagnostics of the cancer prostate tissues," *Proceedings of the SPIE*, vol. 7008, Article ID 70082C, April 2008.
- [27] A.G. Ushenko, A.I. Fediv, Yu.F. Marchuk, "Correlation and fractal structure of Jones matrices of human bile secret," *Proceedings of the SPIE*, vol. 7368, Article ID 73681Q, July 2009.
- [28] A.G. Ushenko, Yu.Ya. Tomka, V.I. Istratiy, "Polarization selection of two-dimensional phase-inhomogeneous birefringence images of biotissues," *Proceedings of the SPIE*, vol. 7388, Article ID 73881L, December 2009.
- [29] A.G. Ushenko, A.I. Fediv, Yu.F. Marchuk, "Singular structure of polarization images of bile secret in diagnostics of human physiological state," *Proceedings of the SPIE*, vol. 7368, Article ID 73681S, July 2009.
- [30] S.B. Yermolenko, A.G. Ushenko, P. Ivashko, "Spectropolarimetry of cancer change of biotissues," *Proceedings of the SPIE*, vol. 7388, Article ID 73881D, December 2009.
- [31] A.G. Ushenko, I. Z.Misevich, V. Istratiy, I. Bachyns'ka, A. P. Peresunko, Omar Kamal Numan, and T. G. Moiyusuk, "Evolution of Statistic Moments of 2D-Distributions of Biological Liquid Crystal Net Mueller Matrix Elements in the Process of Their Birefringent Structure Changes," *Advances in Optical Technologies*, vol. 2010, Article ID 423145, March 2010.
- [32] O. V. Dubolazov, A. G. Ushenko, V. T. Bachynsky, A. P. Peresunko, and O. Ya. Vanchulyak, "On the Feasibilities of Using the Wavelet Analysis of Mueller Matrix Images of Biological Crystals," *Advances in Optical Technologies*, vol. 2010, Article ID 162832, March 2010.
- [33] Yu. A. Ushenko, A. P. Peresunko, and Bozan Adel Baku, "A New Method of Mueller-Matrix Diagnostics and Differentiation of Early Oncological Changes of the Skin Derma," *Advances in Optical Technologies*, vol. 2010, Article ID 952423, March 2010.
- [34] Oleg V. Angelsky and Yuriy A. Ushenko, "The Degree of Mutual Anisotropy of Biological Liquid Crystals Net during the Diagnostics of Human Tissues Birefringence," *Advances in Optical Technologies*, vol. 2010, Article ID 321275, March 2010.
- [35] Oleg V. Angelsky, Yuriy A. Ushenko, Alexander V. Dubolazov, and Olha Yu. Telenha, "The Interconnection between the Coordinate Distribution of Mueller-Matrixes Images Characteristic Values of Biological Liquid Crystals Net and the Pathological Changes of Human Tissues," *Advances in Optical Technologies*, vol. 2010, Article ID 130659, March 2010.
- [36] I.Z. Misevitch, Yu.O. Ushenko, O.G. Pridiy, A.V.Motrich, Yu.Ya. Tomka, O.V. Dubolazov, "Investigation of singularities inherent to Mueller matrix images of biological crystals: diagnostics of their birefringent structure," *Semicond. Physics, Quantum Electronics&Optoelectronics*, 12(4), 379-390, 2009.
- [37] Yu.O. Ushenko, Yu.Ya. Tomka, O.G. Pridiy, A.V.Motrich, O.V. Dubolazov, I.Z. Misevitch, V.V. Istratiy, "Wavelet analysis for Mueller matrix images of biological crystal networks," *Semicond. Physics, Quantum Electronics&Optoelectronics*, 12(4), 391-398, 2009.
- [38] Yu.O. Ushenko, V.V. Istratiy, V.O. Balanets'ka, D.O. Kvasniyk, V.T. Bachinsky, O.I. Olar, "Phase maps for networks of polycrystalline human biological liquids: Statistical and fractal analyses," *Semicond. Physics, Quantum Electronics&Optoelectronics*, vol. 13(3), 240-247, 2010.
- [39] Yu.O. Ushenko, I.Z. Misevich, A.P. Angelsky, V.T. Bachinsky, O.Yu. Telen'ga, O.I. Olar, "Polarization-singular structure in laser images of phase-inhomogeneous layers to diagnose and classify their optical properties," *Semicond. Physics, Quantum Electronics&Optoelectronics*, vol. 13(3), 248-258, 2010.
- [40] V.T. Bachinsky, Yu.O. Ushenko, Yu.Ya. Tomka, O.V. Dubolazov, V.O. Balanets'ka, A.V. Karachevtsev, "Wavelet analysis for polarization maps of networks formed by liquid biological crystals in blood plasma: statistical and fractal approaches," *Semicond. Physics, Quantum Electronics&Optoelectronics*, vol. 13(3), 189-201, 2010.