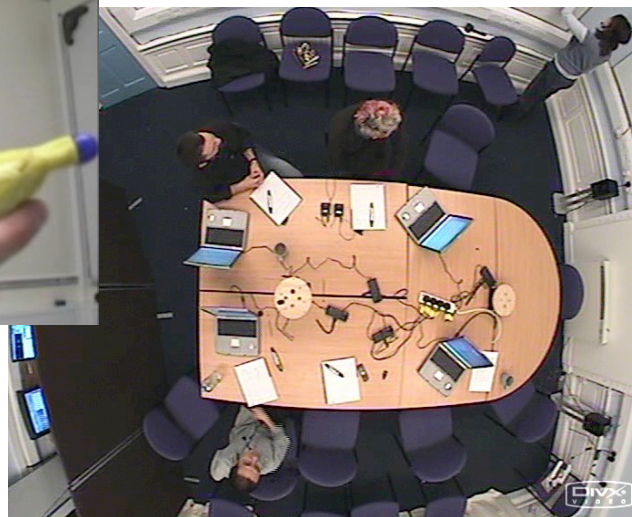
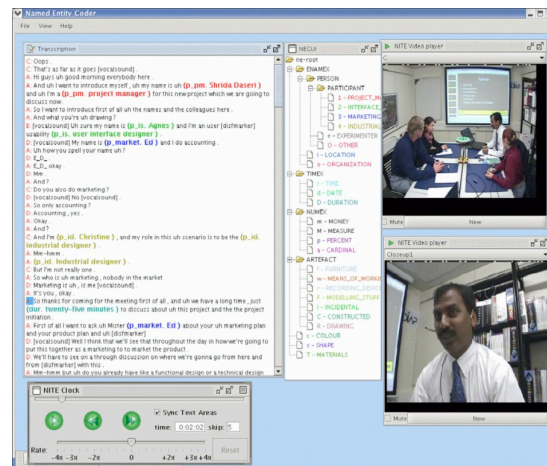


Developing Meeting Support Technologies: From Data to Demonstration (and Beyond)

Jean Carletta
University of Edinburgh
Edinburgh, Scotland
jeanc@inf.ed.ac.uk

Abstract

In 2004, the AMI Consortium set out to collect a multimodal meeting corpus that would give us all the raw material we needed to demonstrate a whole range of meeting support technologies, most of which we knew we hadn't thought of yet. In this keynote, I will talk about how we designed the corpus to grow an interdisciplinary community that would collectively understand not just the technologies but how groups work, and then I will describe some of the novel applications we have built using the data and are currently showing to industrial end users.



Display word elements from meeting ES2008d
 really yeah yeah Would it be a very difficult to um just have an external device that like i dunno you tape to your To your t. v. um that when you press it A little like beep goes off I think that would

AMIDA Content Linking Demo

File Settings

Detected keywords

- remote
- remote
- buttons
- buttons
- button
- button

Meeting ES2008c: transcript from 600 s to 800 s

MEE031 be be fashionable .
 MEE031 Um other we've also got to remember that this is a device that serves as a useful purpose .
 MEE031 Uh we want people to be able to use it s as a remote control , so we need to determine what the essential functions of the d of the device are and make sure that we include that we've included all of those and that we actually end up with a device that is going to be useful to people .
 MEE031 We have a number of different choices for a design concept um and s that's that's something that that
 MEE031 I'll show you some examples of um , but essentially we need to choose how how is this device going to work , how how what kind of model is there going to be for user interaction with this device .
 MEE031 Uh once we've chosen a a concept for it , we can then design the features around the concept , making sure that we get all the essential functions in the device and uh the extra functions and the more advanced features .
 MEE031 And of course we also have to make it look cool .
 MEE031 So basically , that's what we don't want .
 MEE031 M we don't want lots of buttons , uh complicated features .
 MEE031 We want something that looks nice and simple .
 MEE031 Here's a
 FFF030 Hmm

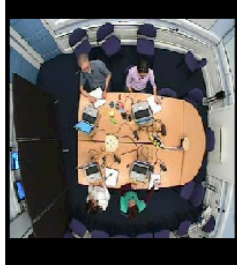
Related documents

- *** Button - Wikipedia, the
- *** Button (computing) - W
- *** Radio button - Wikiped
- *** Dick Button - Wikipedi
- *** Wikipedia:Reference d
- *** ES2008c.1400-1600.s
- ** ES2008c.600-800.seg
- ** ES2008c.1200-1400.se
- * ES2008c.1800-2000.se
- * ES2008b.600-800.segr

Update Show all

AMIDA
 AUGMENTED MULTIMODAL INTERACTION
 WITH DISTANCE ACCESS

Current meeting

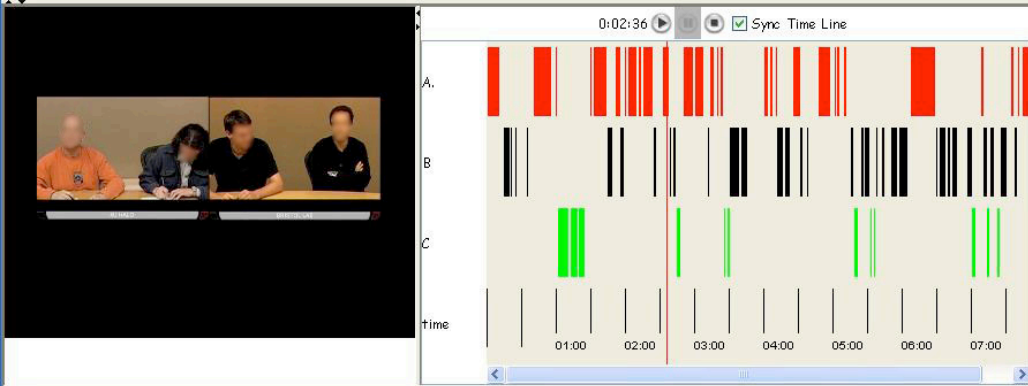


Past meetings

- conceptual design (ES2008a)
- functional design (ES2008b)
- project kick-off (ES2008a)

Summary Browser

0:02:36 Sync Time Line



Sync Transcript

Segment Excision

prefer people looks from a d...
 A: uh so so so for me um we have to have some kind of see elements was a beach pop up each elements people size and like it's again um but they seem to do that and will um
 B:
 A:
 B:
 A:
 B:
 A:
 B:
 C:
 A: . at some point you you mention a similar maybe preference probably keep for children friendliness so we will take maybe.....
 B:
 A:
 C: