



**QUEEN'S  
UNIVERSITY  
BELFAST**

## The Impact of Residential Mobility on Wellbeing Within a Segregated Post-conflict Society

Hyden, D., Shuttleworth, I., & Stevenson, C. (2016). The Impact of Residential Mobility on Wellbeing Within a Segregated Post-conflict Society. Paper presented at Royal Geographical Society with IBG Annual International Conference 2016, London, United Kingdom.

### Queen's University Belfast - Research Portal:

[Link to publication record in Queen's University Belfast Research Portal](#)

### Publisher rights

© 2017 The Authors.

### General rights

Copyright for the publications made accessible via the Queen's University Belfast Research Portal is retained by the author(s) and / or other copyright owners and it is a condition of accessing these publications that users recognise and abide by the legal requirements associated with these rights.

### Take down policy

The Research Portal is Queen's institutional repository that provides access to Queen's research output. Every effort has been made to ensure that content in the Research Portal does not infringe any person's rights, or applicable UK laws. If you discover content in the Research Portal that you believe breaches copyright or violates any law, please contact [openaccess@qub.ac.uk](mailto:openaccess@qub.ac.uk).



**Project 097**

# **The Impact of Residential Mobility on Wellbeing within a Segregated Post-Conflict Society**

*Presentation for the Session on New and Emerging Research  
within Geographies of Health and Wellbeing (1)*  
**RGS-IBG Annual International Conference 2016**

Deborah Hyden email: [dhyden01@qub.ac.uk](mailto:dhyden01@qub.ac.uk)

Supervisors:

Dr I G Shuttleworth

Dr C Stevenson (Anglia-Ruskin)

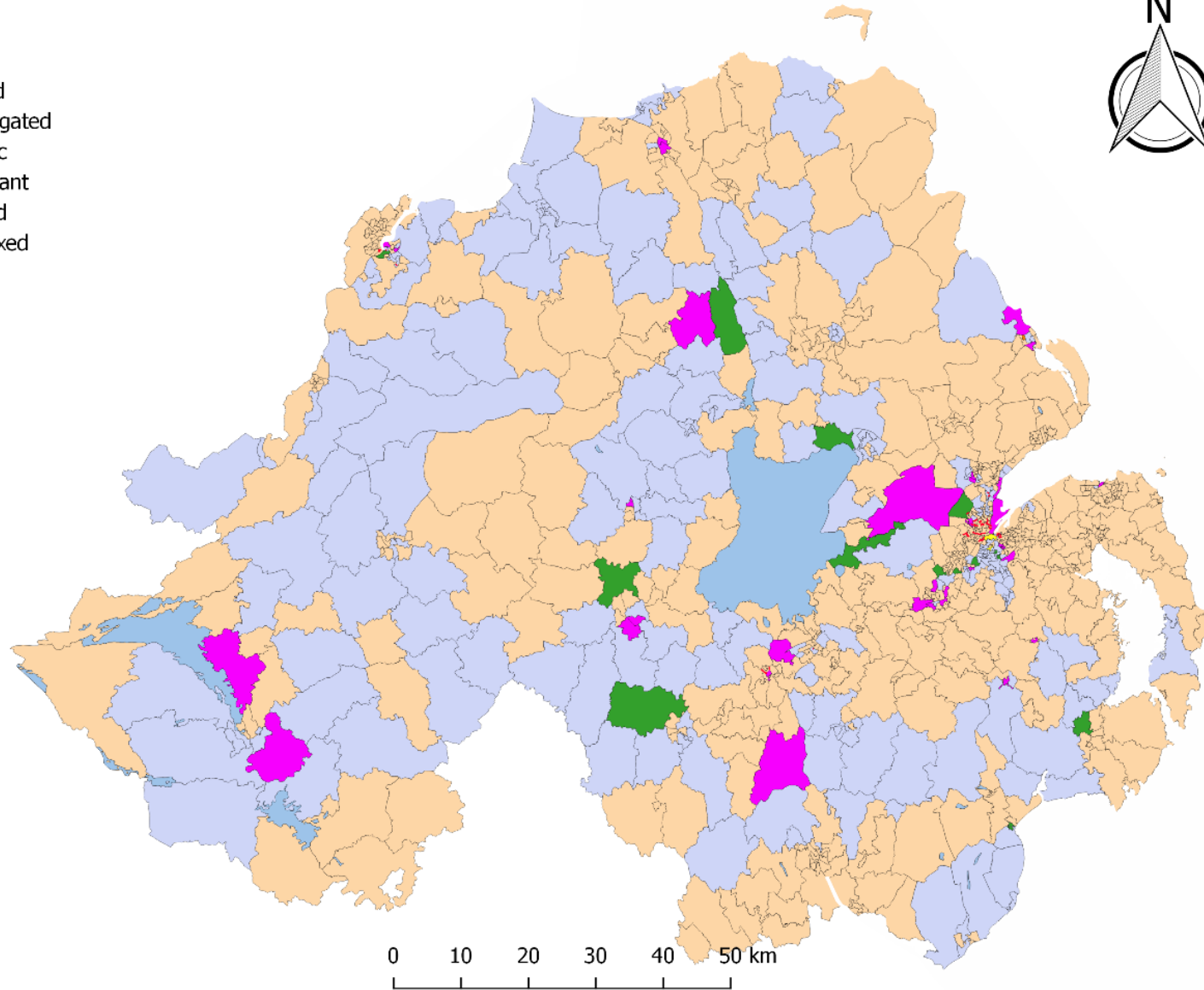
# Outline

- Introduction
- Research questions
- The data
- Exploratory results
- Conclusions & future work



**\*Deloitte (2007)**

- Peacelines
- Remained Mixed
- Remained Segregated
- Mixed to Catholic
- Mixed to Protestant
- Catholic to Mixed
- Protestant to Mixed



# Research Questions

- What are the characteristics of the people who migrate from single identity to 'mixed' neighbourhoods?
- **What is the impact of this type of migration on wellbeing** and identity?
- Why do they move? What are their expectations? How do they experience contact in their new residential setting?
- What are the identity processes underpinning this transition?
- How are people already living in 'receiving' communities affected?

# The Data



- Representative sample of 28% NI population\*
- Census information
- Migration data based on information from health card registration (2001 – 2015)
- Distinct Linkage Project
- Prescription data from BSO – Psychotropic medications issued (2010 – 2015)

\*Filtered to 197,188

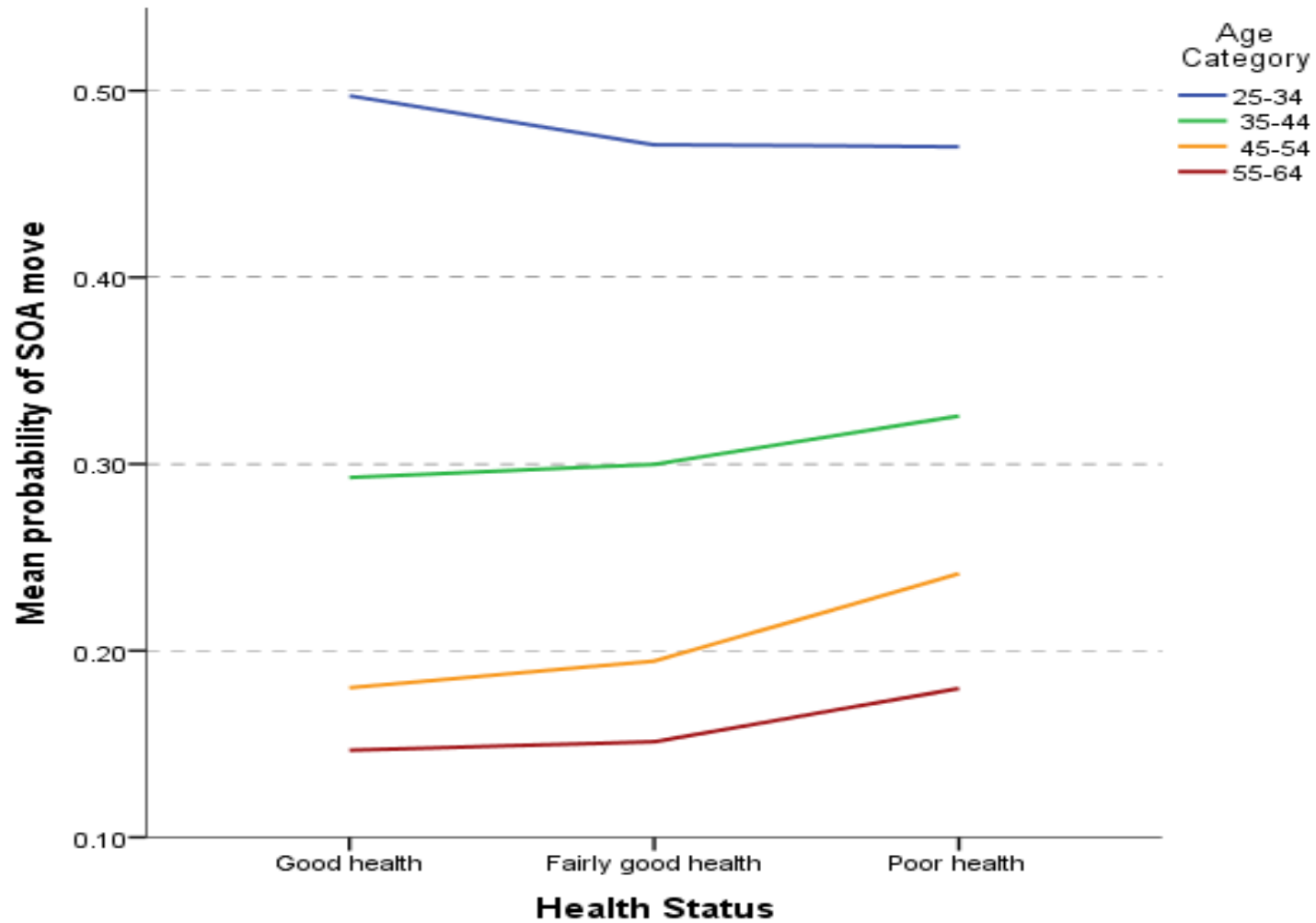
# Healthy Migrant?

**Good Health 2001 – 22% more likely to move to a  
different SOA**

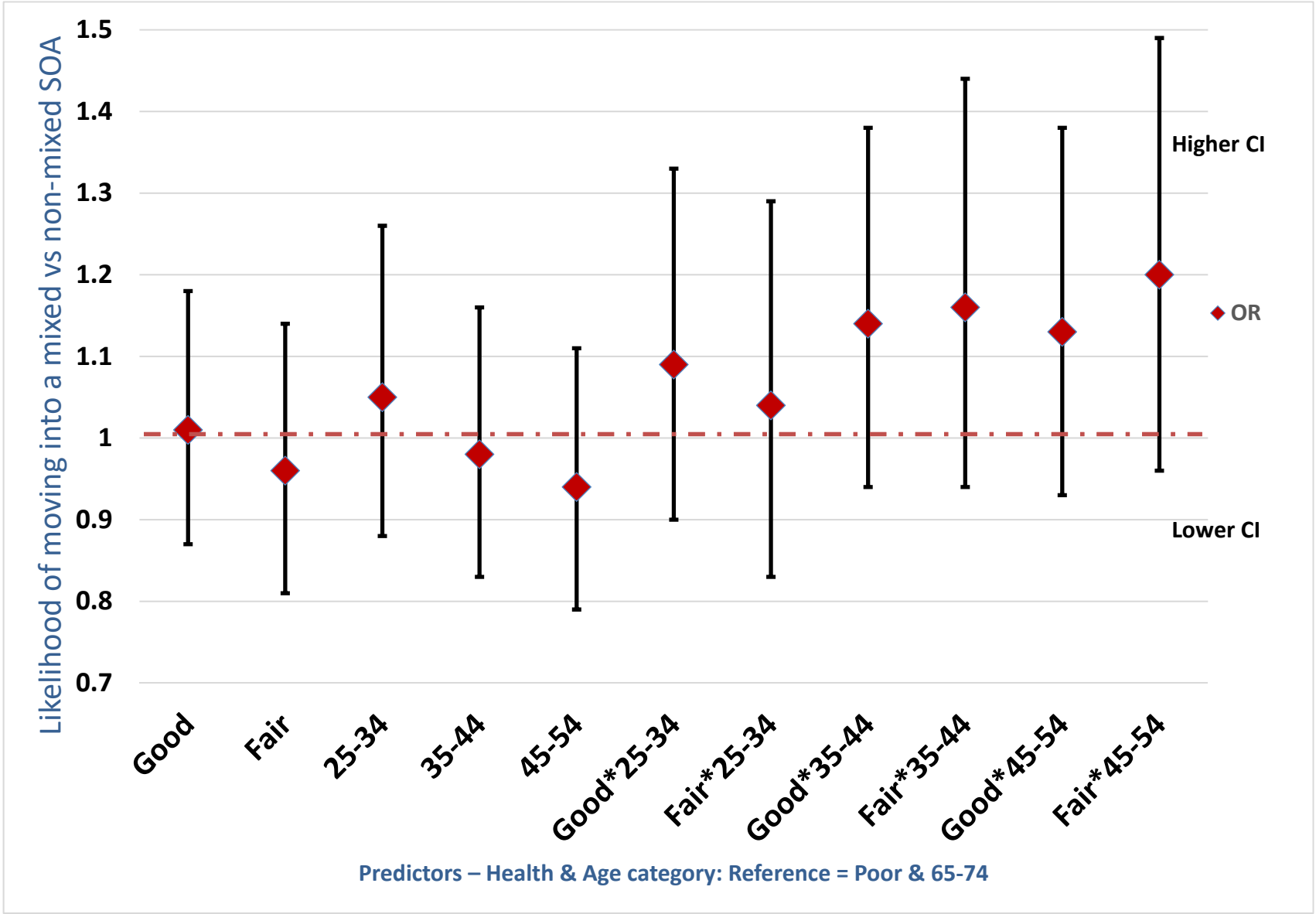
(OR = 1.22, 95% CI = 1.19, 1.26)



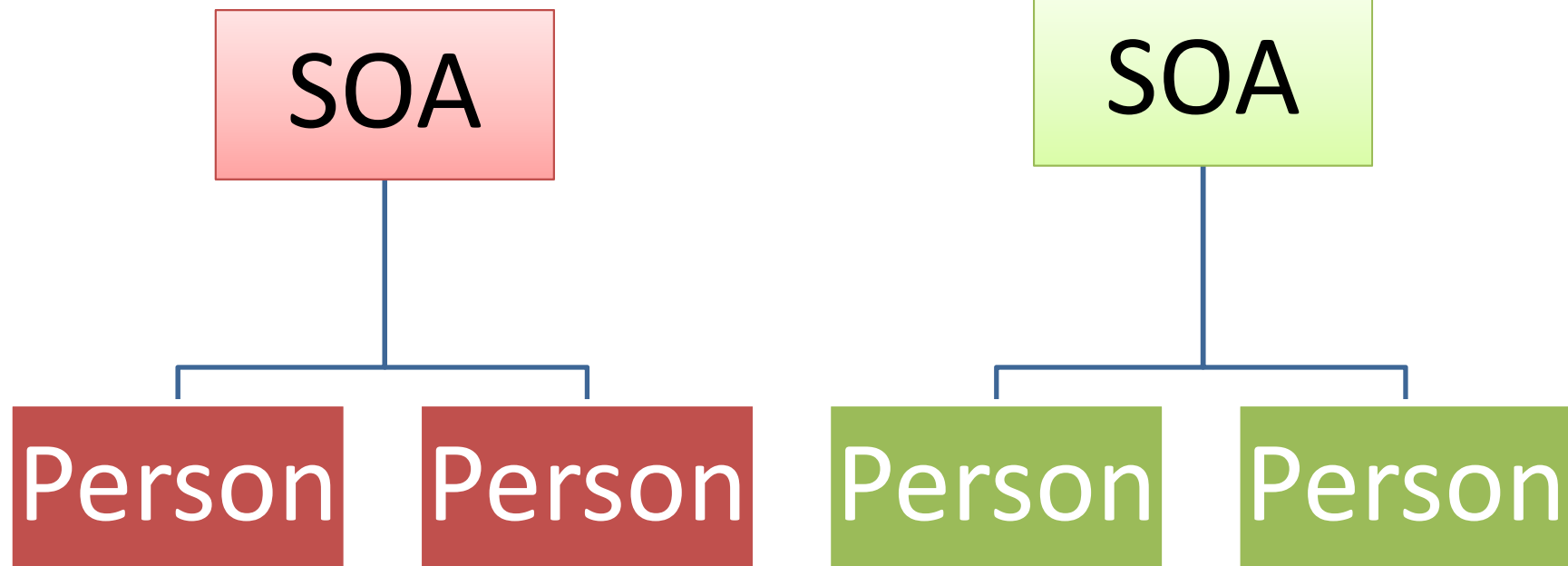
# Healthy Migrant?



Intercept = .16



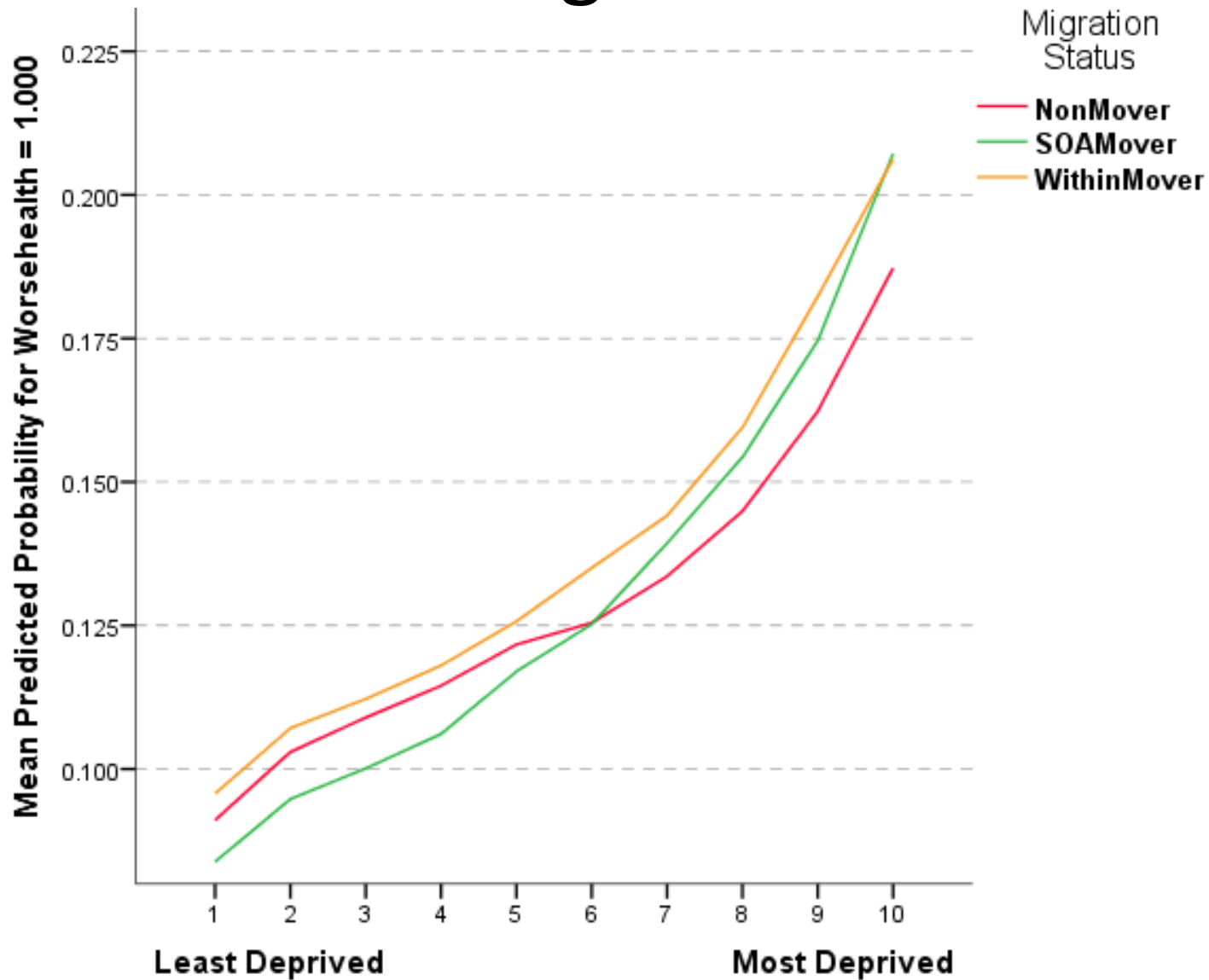
# Next Steps



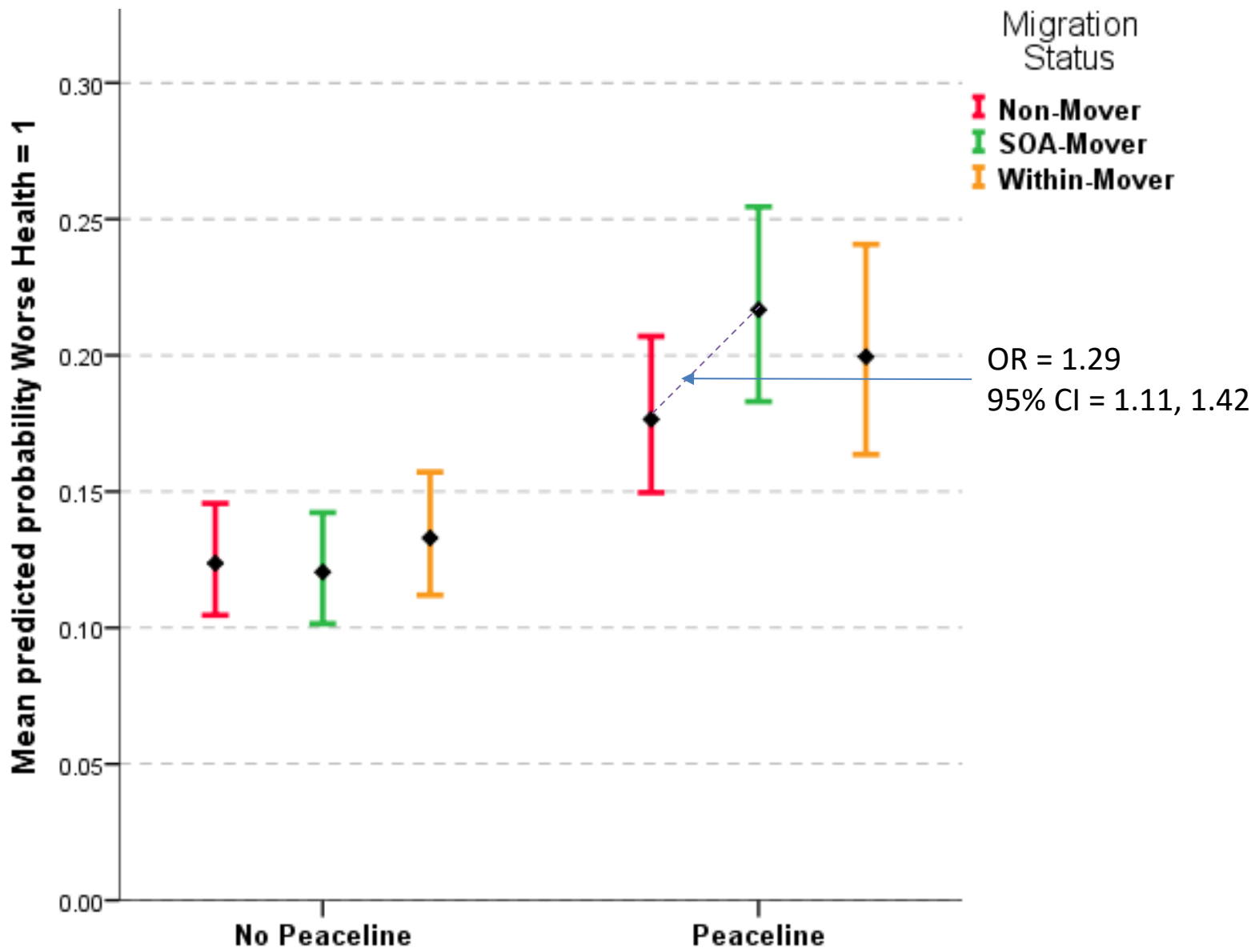
# Analysis Strategy

- DV = Worse Health
  - Good to fair, Good to Poor, Fair to Poor vs No Change/Improvement
- Level 1 = Migration Status
  - Mover, Non-mover, Within Mover
    - Controlling for age, SES, Tenure, Number of Births, etc
- Level 2 (SOA) = Deprivation & Segregation
  - Townsend, Simpson's 1/D, Peacelines

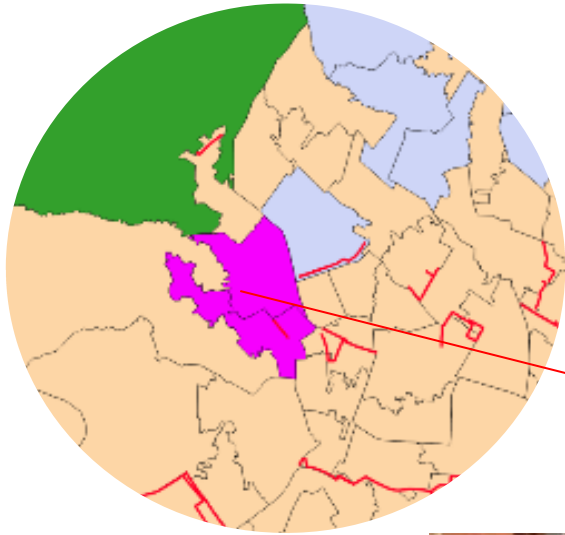
# Effect of Migration x Area

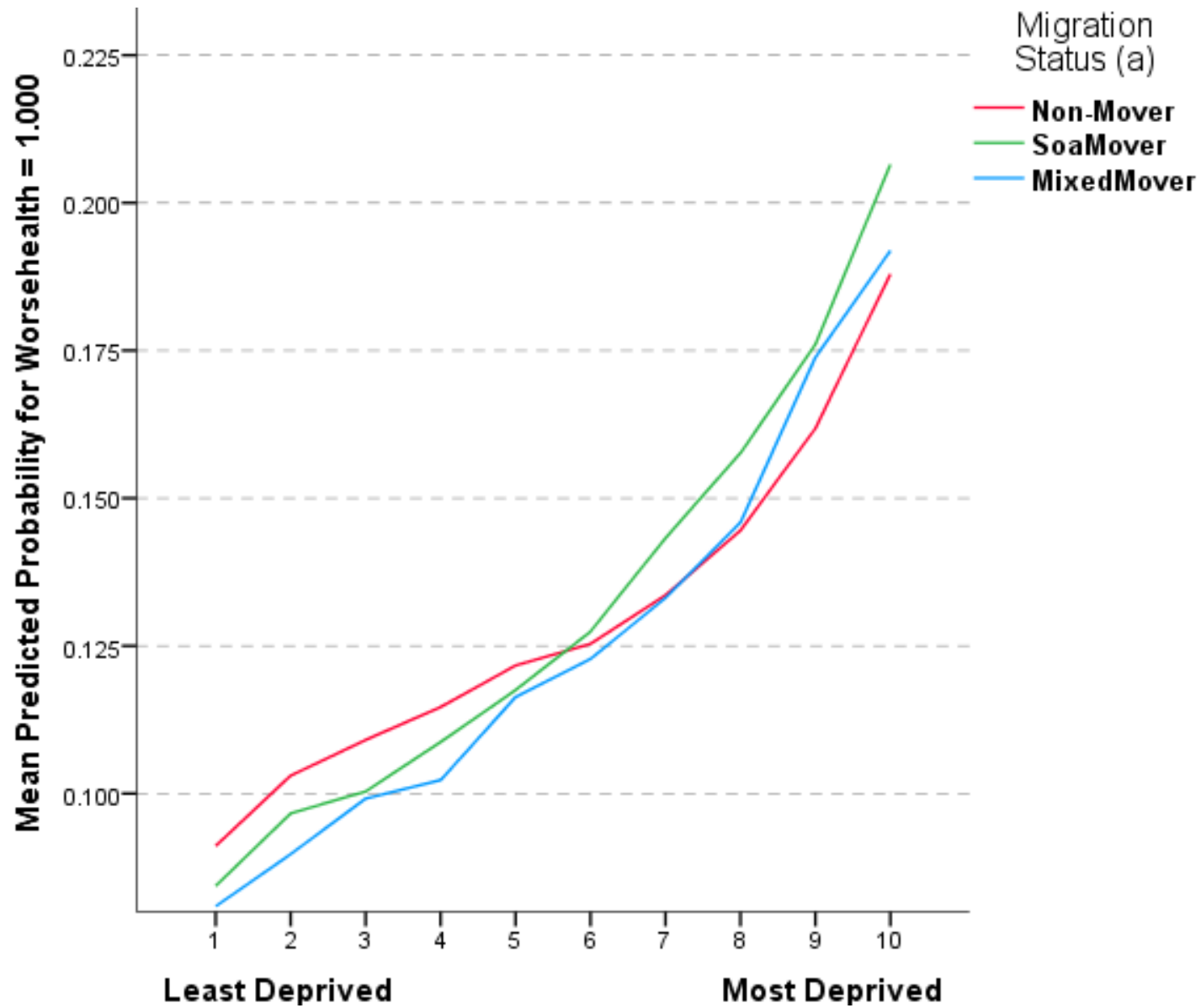


Intercept = .08



Intercept = .08





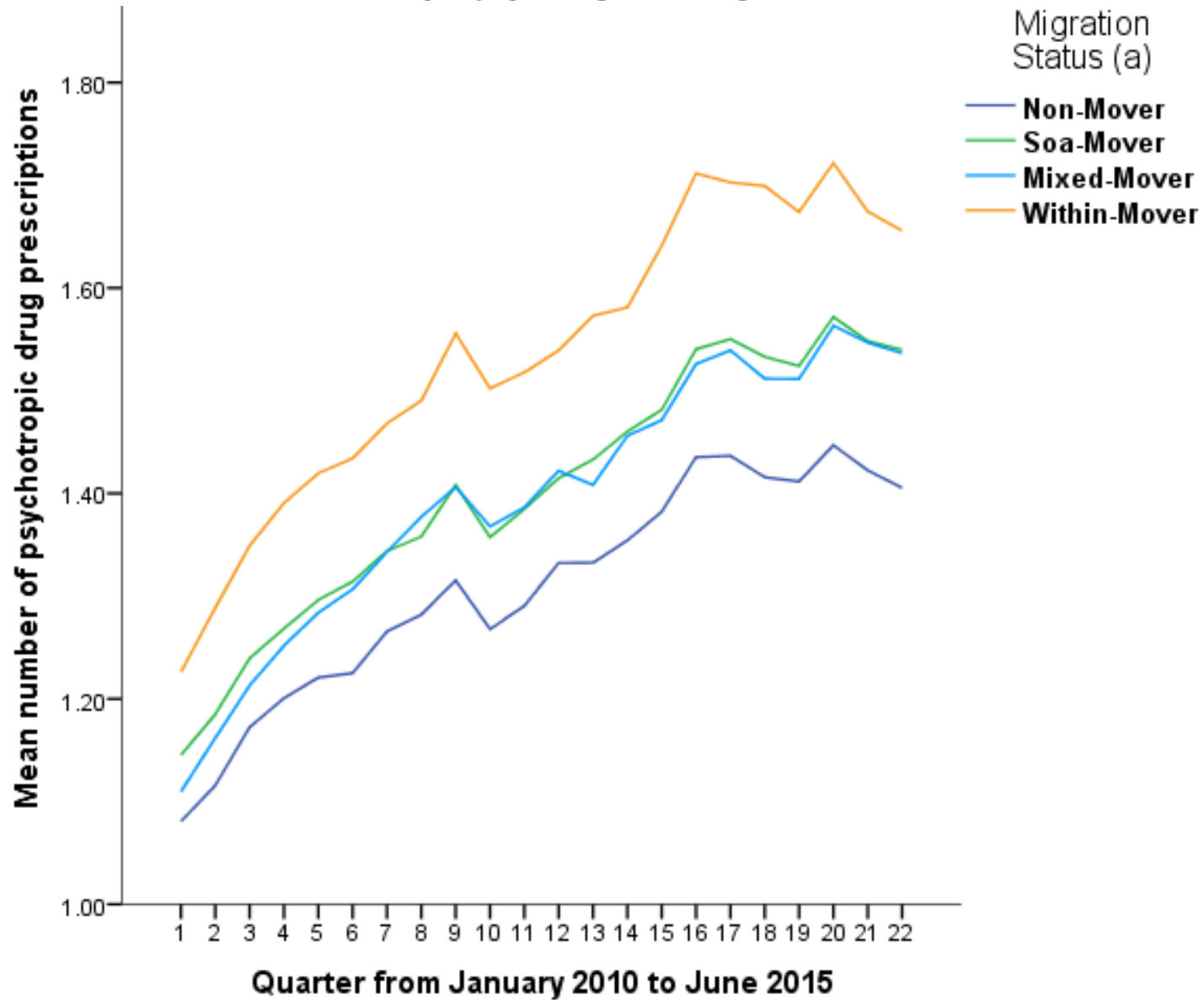
Intercept = .08



# Conclusions

- People who move shorter distances (within the same SOA) more likely to report a decline in wellbeing
- For those who move to a different SOA, there appears to be a small health advantage in moving to a mixed area

# Future work



# Thank you

The help provided by the staff of the Northern Ireland Longitudinal Study (NILS) and the NILS Research Support Unit is acknowledged. The NILS is funded by the Health and Social Care Research and Development Division of the Public Health Agency (HSC R&D Division) and NISRA. The NILS-RSU is funded by the ESRC and the Northern Ireland Government. The authors alone are responsible for the interpretation of the data

