

October 1984

Pseudachorutes (Pseudachorutes) Orientalis (Collembola: Hypogastruridae), New Species From New York

Steven J. Loring
Michigan State University

Follow this and additional works at: <https://scholar.valpo.edu/tgle>



Part of the [Entomology Commons](#)

Recommended Citation

Loring, Steven J. 1984. "*Pseudachorutes (Pseudachorutes) Orientalis* (Collembola: Hypogastruridae), New Species From New York," *The Great Lakes Entomologist*, vol 17 (3)
Available at: <https://scholar.valpo.edu/tgle/vol17/iss3/1>

This Peer-Review Article is brought to you for free and open access by the Department of Biology at ValpoScholar. It has been accepted for inclusion in *The Great Lakes Entomologist* by an authorized administrator of ValpoScholar. For more information, please contact a ValpoScholar staff member at scholar@valpo.edu.

**PSEUDACHORUTES (PSEUDACHORUTES) ORIENTALIS
(COLLEMBOLA: HYPOGASTRURIDAE), NEW SPECIES
FROM NEW YORK**

Steven J. Loring¹

While examining pitfall samples collected at the Brookhaven National Laboratory's "Gamma Forest" in 1968 by Dr. George E. Klee, I encountered an unknown species of *Pseudachorutes*. The purpose of this paper is to describe that species.

Pseudachorutes (Pseudachorutes) orientalis new species

COLOR DESCRIPTION: Dorsum greyish-blue, ventral surface cream colored; legs speckled; dens lightly colored greyish-blue on dorsal and ventral surfaces.

MORPHOLOGICAL DESCRIPTION: Ocelli 8+8, subequal, on black patches. Postantennal organ (PAO) elongate elliptical with 9-11, usually 10, tubercles; about 1.5 × length of nearest ocellus (A) (Fig. 1). Antennal segment (ANT) III and IV partially ankylosed—suture visible ventrally. ANT IV with distinct single-lobed apical bulb and eight blunt setae (Figs. 2-3); two distal ventral blunt setae thin and may be mistaken for normal setae. ANT III with two dorsal sense clubs and a long, ventral seta (Figs. 2-3). Mandible with two distal teeth (Figs. 4-5). Maxilla stylet shaped with small hook distally (Fig. 6). Unguis with inner tooth about 1/3 length from base (Fig. 7); unguiculus absent; no clavate tenent hairs. Collophore with 3+3 setae. Tenaculum with 3+3 teeth. Manubrium with 3-3 dorsal setae; dens about 2 × length of manubrium, with six dorsal setae; mucro lamellate (Fig. 8). Long posterior body setae weakly clavate. Male genital plate with 16 setae (Fig. 9). Female genital plate unknown. Maximum length 1.5 mm.

DIAGNOSIS

Using Christiansen and Bellinger (1980), *Pseudachorutes orientalis* keys out nearest *P. subcrassoides* Mills, 1934; nearest *P. simplex* Maynard, 1961 in Massoud (1967); near *P. subcrassus* Tullberg, 1871 in Gisin (1960); and near *P. lunatus* Folsom, 1916 using Stach (1949). *Pseudachorutes orientalis* may be separated from these species by the following characteristics:

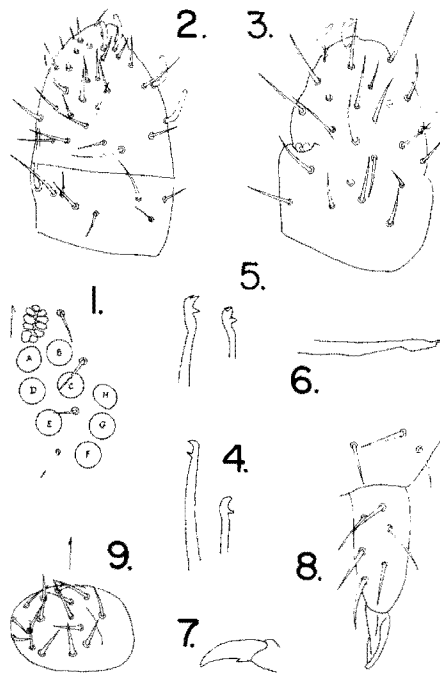
	<i>orientalis</i>	<i>subcrassoides</i>	<i>simplex</i>	<i>subcrassus</i>	<i>lunatus</i>
clavate tenent hairs	absent	absent	absent	absent	present
ANT IV apical bulb lobes	1	3	2-3	3	unknown
PAO lobes	9-11	8-14	14-17	8-10(11)	10-12
mandibular teeth	2	4-5	4	4	unknown
ANT IV blunt setae	6-8	5	6	5-6	unknown

¹Department of Zoology, Michigan State University, East Lansing, MI 48824.

The number of mandibular teeth and lobes of the antennal apical bulb distinguish *P. orientalis* from *P. simplex*, *P. subcrassoides*, and *P. subcrassus*. These features have not been seen in *P. lunatus*, but the presence of a clavate tenent hair on each leg will separate it from *P. orientalis*.

The posterior body setae of *P. orientalis* appear to be very weakly clavate, but may be mistaken for acuminate setae. One aberrant specimen had three mandibular teeth instead of two.

TYPES: Holotype and 45 paratypes in alcohol; eight paratypes on slides. Holotype and paratypes deposited in the Entomology Museum, Michigan State University, East Lansing. All specimens were collected by Dr. George E. Klee in New York, Suffolk County, Brookhaven National Laboratory, Sections 9 and 10 of oak-pine woodlot containing a radiation source, 28 June, 2-5, 8-11, and 23-29 July, and 11-17 August 1968.



Figs. 1-9, (1) Right ocellar pattern and PAO; (2) ANT III & IV, ventral view; (3) ANT III & IV, dorsal view; (4) normal mandible; (5) abnormal mandible; (6) maxilla; (7) hind unguis; (8) left side of furcula, dorsal view; (9) male genital plate.

ACKNOWLEDGMENTS

I thank Dr. Richard J. Snider, Michigan State University, for laboratory facilities and criticism, and Dr. George E. Klee, Kent State University, for providing specimens.

LITERATURE CITED

- Christiansen. K. and P. Bellinger. 1980. The Collembola of North America North of the Rio Grande. Part 1. Grinnell College. Grinnell, Iowa. 386 p.
- Gisin. H. 1969. Collembolenfauna Europas. Museum d'Histoire Naturelle. Geneve. 312 p.
- Massoud. Z. 1967. Monographie des Neanuridae, Collemboles poduromorphes a pieces buccales modifees. p. 7-399 *in*: Delamare Deboutteville, C. and E. Rapoport (eds.). Biologie de l'Amerique Australe. Vol. III. Editions du Centre National de la Recherche Scientifique. Paris.
- Stach. J. 1949. The apterygoten fauna of Poland in relation to the world-fauna of this group of insects. Families: Anuridae and Pseudachorutidae. Acta Monogr. Musei Hist. Natur. Polska Akademia Umiegetnosci. Krakow. 122 p.