

1985

Graduate Catalog, 1985-1986

Valparaiso University

Follow this and additional works at: <http://scholar.valpo.edu/gradcatalogs>

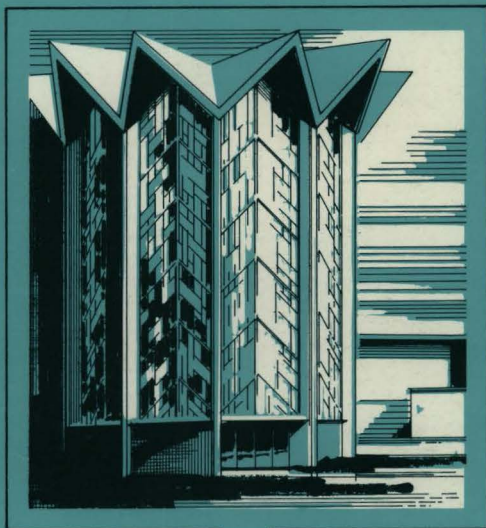
Recommended Citation

Valparaiso University, "Graduate Catalog, 1985-1986" (1985). *Graduate Catalogs*. 44.
<http://scholar.valpo.edu/gradcatalogs/44>

This Book is brought to you for free and open access by ValpoScholar. It has been accepted for inclusion in Graduate Catalogs by an authorized administrator of ValpoScholar. For more information, please contact a ValpoScholar staff member at scholar@valpo.edu.

Valparaiso University

BULLETIN



GRADUATE CATALOG 1985-86

VALPARAISO UNIVERSITY

Location

Valparaiso, Indiana—Population 20,000
45 Miles Southeast of Chicago; 13 Miles South of Lake Michigan

Campus Size

310 Acres, 70 Buildings

Control

Independent

Religious Affiliation

Lutheran

Major Academic Divisions

(Approximate Enrollments, Fall 1984)
College of Arts and Sciences—1750
Christ College (Honors)—175
College of Business Administration—610
College of Engineering—510
College of Nursing—380
Law School—360
Graduate Division—400 Part-time

Accreditation

The North Central Association of Colleges and Schools (All Programs)
National Council for Accreditation of Teacher Education
National Association of Schools of Music
The Council on Social Work Education
The Accreditation Board for Engineering and Technology
Indiana State Board of Nurses' Registration and Nursing Education
The National League for Nursing
The Association of American Law Schools
The American Bar Association
Indiana State Department of Education

Major Affiliations

The American Council on Education
The American School of Classical Studies at Athens
The Association of American Colleges
The Lutheran Education Association
The American Association of Colleges of Nursing
The American Society for Engineering Education
The American Assembly of Collegiate Schools of Business
The American Schools of Oriental Research
The Center for Research Libraries

Valparaiso University Information Operator—Call 219/464-5000

TABLE OF CONTENTS

	Page
Introduction	3
Admission	5
Facilities	6
Master of Arts in Liberal Studies	8
Master of Education	9
Master of Music	10
Course Offerings	12
Academic Policies	24
Financial Policies	27
Administration	29
University Calendar	30
Index	31
Campus Map	Inside Back Cover

ANNOUNCEMENTS FOR 1985-1986 SESSIONS
VALPARAISO UNIVERSITY GRADUATE BULLETIN
Valparaiso, IN 46383-9978

The Graduate Catalog of Valparaiso University is designed to describe the programs of the University and to provide the information to guide students in the successful achievement of their academic goals. Nevertheless, the material is for information only and does not make a contract between the student and the University. Students themselves are ultimately responsible for completion of the requirements for the degree as well as for the value received from University programs.

It is the policy of Valparaiso University not to discriminate on the basis of sex, race, color, handicap, age, veteran status or national or ethnic origin in its educational programs, admission policies, employment policies, financial aid or other school-administered programs. This policy is enforced by federal law under Title IX of the Education Amendments of 1972, Title VI of the Civil Rights Act of 1964 and Section 504 of the Rehabilitation Act of 1973. Inquiries concerning the application of said federal regulations to this University may be referred to the University Compliance Director of Affirmative Action Plan.

Valparaiso University is authorized under federal law to enroll non-immigrant alien students.

GRADUATE DIVISION



Heritage Hall

Introduction

The University, in offering graduate programs, is seeking to fulfill an objective set by The Lutheran University Association when it acquired the plant in 1925: to make the institution a Christian center of advanced study. The University desires through these programs to broaden its educational service to its constituency and to the community as a whole. There are elements of uniqueness in these programs, both in breadth and depth, which make them unusual in American higher education.

The program of graduate studies was initiated by Valparaiso University in the Summer Session of 1963. It has continued through late afternoon and evening courses during subsequent academic years. At present the plan is to offer graduate courses mainly in this pattern of summer sessions and evening courses.

The graduate programs are under the general supervision of the President and the Faculty of the University. The policies of the Graduate Division are determined by the Graduate Council, and the programs and regulations as defined by the Council are administered by the Director of the Graduate Division.

Honor System

The student-initiated Honor System has a long history at Valparaiso University and is a strong distinguishing characteristic of the institution. It is in every way consistent with the highest principles of Christian ethics and morality. In sanctioning the Honor System, the University presumes that

students are able and willing to accept the duties and responsibilities of honorable conduct for the sake of the Valparaiso University community.

Honor Code: "I have neither given or received nor will I tolerate others' use of unauthorized aid."

Under the Honor System, all written examinations of any length are taken in an atmosphere free from the surveillance of a proctor. Every student has the responsibility to keep academic work free of dishonesty, that is, to neither give nor receive unauthorized aid. Non-tolerance of the use of unauthorized aid is a further responsibility which is inherent in the Honor System. Each student must report to the Graduate Director any violation of the System of which he/she becomes aware. Students are usually asked to sign a pledge on work done for academic credit to the effect that no unauthorized aid was given, received, or tolerated. For graduate students, the Graduate Council serves as Honor Council.

The faculty reserves the right to abrogate the Honor System at any time.

Accreditation

Valparaiso University is accredited by the North Central Association of Colleges and Schools for the offering of bachelor's and master's degrees. The graduate programs for the preparation of teachers are approved by the Indiana State Department of Public Instruction.

Degrees

Valparaiso University offers programs toward the completion of three graduate degrees: Master of Arts in Liberal Studies (M.A.L.S.), Master of Education (M.Ed.), and Master of Music (M.M.). Specific requirements and options for each degree are listed in the sections describing the degrees.

Special Non-Degree Students

A person who meets the admission requirements may enroll in the Graduate Division as a special non-degree student. The student may take courses in several fields, without an adviser, for personal enrichment. If an individual wishes to change from a non-degree to a degree program, he or she must petition the Graduate Division to do so. An academic adviser will be assigned at this time. Not more than nine (9) credit hours earned as a special student may apply toward a degree program.

General Information

Admission

Requirements. An applicant to the Graduate Division must be a graduate of an accredited college or university with a standing of at least 2.50 (C=2.00) in all work attempted. Official transcripts of all undergraduate and previous graduate work and a completed form for admission (available from the Graduate Office) must be forwarded to the Director of the Graduate Division for evaluation. The transcripts and other application materials become part of the records of the Graduate Division, Valparaiso University, and are not returnable. Graduate students must be admitted at least three weeks prior to the semester in which they plan to enroll.

Admission to the Graduate Division is approved by the Graduate Council following receipt of the following materials:

1. A completed application form.
2. Transcript of work done for the bachelor's program. It is essential that such transcripts be submitted promptly (along with the application form) and sent to the attention of the Director of the Graduate Division. To be formally admitted to the Graduate Division, students must have an undergraduate grade point average of 2.5 or better.
3. Three letters of recommendation. These letters should indicate academic qualifications and/or promise, personal qualifications, and employment history if applicable. Persons writing the letters of recommendation should not be related to the applicant.

Following their receipt, all applications are reviewed by the director of the Graduate Division and the Chairman of the Graduate Council. Notice of acceptance is sent promptly to the applicants. If students wish to appeal a decision, they may do so by writing a letter of appeal to the Graduate Council.

After students have been accepted into the Graduate Division, they may find an interview with the Graduate Director helpful for program planning purposes.

Advising. Once admitted to the Graduate Division, students will be assigned an adviser according to the selected area of academic concentration. Teachers who are taking graduate work to meet license requirements or are adding courses to their license will be assigned an adviser in the Department of Education in addition to their academic advisers.

Master of Music. Applicants for the Master of Music degree program must, in addition to applying to the Graduate Division as described above, audition in their principal performing medium. Arrangements for the audition are made through the Department of Music.

Special Undergraduate Admission.

An undergraduate senior at Valparaiso University who has a standing of at least 3.00 in all work and a standing of at least 3.00 in all the work taken in his/her major field, and who needs not more than six semester hours of credit to meet the requirements for the baccalaureate degree, may be granted provisional admission to the graduate program. A student who has been granted such admission will be permitted to enroll for not more than six semester hours of courses designated for graduate credit and not more than a total of twelve semester hours during a semester; or for not more than three semester hours of courses designated for graduate credit and not more than a total of six semester hours during a summer session. Courses taken for graduate credit may not be counted toward fulfilling the requirements for a baccalaureate degree.

Certification

Teacher Certification. Students in teacher education seeking professional certification should consult with the Chair of the Department of Education concerning specific certification requirements prior to, or at the start of, graduate study.

Elementary Certification. Persons seeking to professionalize their general elementary licenses must devote at least 15 semester hours of their work to a combination of courses in education and subject matter directly related to

elementary school teaching; a minimum of 12 semester hours must be in professional education. The Master of Education degree is designed to meet these requirements. The Master of Arts in Liberal Studies degree may be used for professionalizing the general elementary license, but coursework above the 30 semester hour minimum for that degree may be required. Consult the Department of Education concerning specific requirements.

Secondary Education. Secondary teachers wishing to professionalize their teaching licenses should take the Master of Arts in Liberal Studies degree program. A minimum of six semester credit hours in professional education coursework is required with at least three of these taken at the 300-level at Valparaiso University. One course in Educational Foundations is required. Courses at Valparaiso University that meet this requirement are Education 310, 313, 315, or another 300-level course so designated by the Department of Education. Consult with the Chair of the Department of Education concerning specific requirements in each teaching field.

Reading Programs. The University offers courses which meet the certification requirements of the State of Indiana to teach reading as a subject matter field and to professionalize such certification. Specific information regarding the reading program is available from the Department of Education.

Facilities

University Library Facilities. The Henry F. Moellering Memorial Library, situated directly across from the chapel, is the general library of the University. It serves the students, faculty, and staff of the campus community with a collection of approximately 240,000 bound volumes, 88,000 microforms and 1300 current periodicals. In addition, the library maintains a separate collection of 180,000 government documents and a collection of 88,500 maps. These have been developed primarily through depository status with the U.S. Superintendent of Documents, the State of Indiana, the U.S. Geological Survey and the Defense Map Service. Musical and literary recordings are

available in the Music Record Library, a collection of 4200 records and tapes. All materials are available to users on open shelves with the exception of reserve books, the University Archives and rare books. Reading rooms are air conditioned and seating is distributed throughout the building.

The library assumes an active role in interlibrary cooperative efforts and holds memberships in the Indiana Cooperative Library Association, the Ohio Colleges Library Center, the Northwest Indiana Area Library Services Authority, the Midwest Health Science Library Network and the Metropolitan Periodical Service. It is an Associate Member of The Center for Research Libraries. Through these relationships, the Interlibrary Loan Department provides services from other libraries with maximum efficiency.

The library of the School of Law, with over 130,000 holdings and LEXIS and WESTLAW computer bibliographic systems is located in Wesemann Hall. A curriculum library is maintained in the J.W. Miller Hall of the Department of Education.

University Art Galleries and Collections. The principal gallery and the collections of almost 800 works of art are located in the Henry F. Moellering Memorial Library. The core collection—the Sloan Collection of American Paintings and a fund for its maintenance, expansion, and educational use were gifts to the University from Spencer and Percy H. Sloan in memory of their parents, Junius R. and Sara L. Spencer Sloan. Works from these collections are on constant display in the Moellering Library and elsewhere on campus, making a significant contribution to cultural life. A unique opportunity is afforded students interested in religious or liturgical art by the active creation of art for regular use in the Chapel. In addition, the Galleries maintain a schedule of visiting exhibitions and related programs representing various aspects of the world of art.

Living Accommodations. In summer sessions only, comfortable living accommodations in University dormitories on campus are available for graduate students.

The residence halls are within a short walking distance of all classrooms. Dormitory fees are indicated in the

University bulletin covering summer session.

Meals may be obtained on a cash basis at the Wehrenberg Hall cafeteria during the summer session.

Requests for living accommodations must be made in advance of registration and should be directed to the Director of the Graduate Division.



Master of Arts in Liberal Studies

This program is broad in scope, offering opportunities for study in several fields. Two basic two-hour courses in The Western Tradition, which are required of all students, provide an integrating core. Also, the student is required to present ten hours of work in one subject matter field other than education. The remaining hours in the thirty-hour program are electives, selected by the student after conference with his/her adviser(s). A maximum of twelve of these elective hours may be in professional education.

In addition, the program provides for the needs of both elementary and secondary classroom teachers who wish to work toward advanced certificates. Students will be able to adjust their programs within the field of concentration and the electives so as to strengthen subject matter competence and, if they desire, to add to their professional training in education.

The M.A.L.S. program provides a particularly challenging opportunity for professional workers who wish to strengthen their preparation and secure breadth of background in academic areas.

To be eligible for the degree of Master of Arts in Liberal Studies, a student must complete at least thirty semester hours, distributed as follows:

1. A core of 14 semester credit hours consisting of:
 - a. Ten semester hours in one subject-matter field (other than education), all of which must be taken at Valparaiso University

- b. Four semester hours in the courses entitled The Western Tradition I and The Western Tradition II, both of which must be taken at Valparaiso University

2. Sixteen semester credit hours of electives, of which twelve semester credit hours may be in education.

At least five of the ten semester credit hours required in the one subject-matter field and at least fifteen of the thirty semester credit hours presented for the degree must be in courses numbered 300 or higher. All 300-level courses must be taken at Valparaiso University.

No thesis is required, but a term paper is a regular part of graduate courses.

Under the Master of Arts in Liberal Studies program, students may concentrate their study in the following fields: English, History, Music, or Psychology. Periodically, graduate level courses which can be taken as electives will be offered in Geography and Sociology in day or evening sessions. Other elective courses may be offered during the day in the following departments: Art, Biology, Chemistry, Communication, Economics, Education, Foreign Languages, Mathematics and Computer Science, Philosophy, Physical Education, Political Science, and Theology.

Teachers who plan to use the M.A.L.S. degree to professionalize their licenses should consult with the Chair of the Department of Education concerning their specific programs.

Master of Education

This program is designed to be used by elementary teachers in professionalizing their certificates. The Master of Education degree program is open only to certified elementary teachers or persons with a planned program for achieving certification.

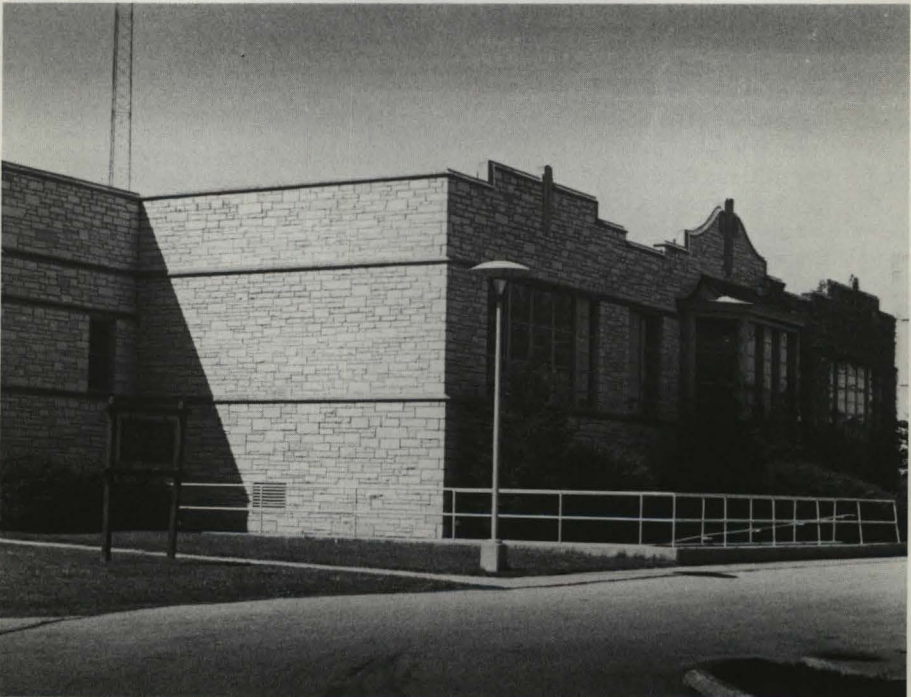
To be eligible for the degree of Master of Education, a student must complete at least thirty-three credit hours, distributed as follows:

1. Foundations of Education
(Education 308, 310, 313,
315 or the equivalent, or
another 300-level course
designated to meet this
requirement) 3 Cr.
2. Research in Education
(Education 317 or the
equivalent) 3 Cr.

3. Other Professional Education
Coursework 9 Cr.
4. Subject matter field(s) other
than Education 9 Cr.
5. Electives 9 Cr.
- Total minimum requirement . . . 33 Cr.
- Minimum 300-level courses at
Valparaiso University 15 Cr.

No thesis is required, but a term paper is a regular part of graduate courses.

All students who are enrolled in the Master of Education program should consult with the Chair of the Department of Education concerning their specific programs.



Miller Hall

Master of Music

This 30-hour program is intended for performers, music teachers in the public and parochial schools, studio teachers, church musicians, and others who wish to continue their professional studies at the graduate level. An appropriate Bachelor's degree in music is a prerequisite.

Students whose undergraduate degrees are not that specified as prerequisite to each of the concentrations may be required to take certain undergraduate courses, which will not apply to the M.M. degree.

The recital or lecture-recital and the final written or oral examination required for the Master of Music degree are under the jurisdiction of the Department of Music and application for executing these requirements must be made to the Chair of the Department of Music.

Core

MUS 235 Music Theory	3 Cr.
MUS 236 Music Theory	3 Cr.
MUS 308 Seminar, Music History	3 Cr.
MUS 308 Seminar, Music History	3 Cr.
Total	12 Cr.

Students whose undergraduate curricula included Music Theory 135, 136, or an equivalent may be permitted to omit one or both of Music 235 and 236.

Regardless of omitted courses, the minimum number of hours required for the degree is 30 credit hours.

Topics in Music 308 may vary from one semester to another.

Concentrations

A. Applied Music

The prerequisite for this concentration is a Bachelor of Music degree in performance or its equivalent.

MUS 221 Pro-Seminar OR	2 Cr.
MUS 223 Pedagogy	
MUS 300 Applied Music	8 Cr.
MUS 390 Research Project	3 Cr.
(subject must be related to the student's performance area)	

Electives (at either 200 or 300 level)	5 Cr.
Total	18 Cr.

Additional requirements:

1. Recital or lecture-recital; and
2. Final oral examination on the literature of the student's performing medium.

B. Church Music, Organ Specialization

The prerequisite degree for this concentration is a Bachelor of Music in organ or church music.

MUS 200 Organ Improvisation	2 Cr.
MUS 215 Liturgical Organ Playing	2 Cr.
MUS 274 History of Church Music	2 Cr.
MUS 300 Applied Music (organ)	4 Cr.
MUS 350 Choir	2 Cr.
MUS 390 Research Project	3 Cr.
Elective (strongly recommended):	
Theology 255 Principles and Forms of Worship	3 Cr.
Total	18 Cr.

Additional requirements:

1. Recital or lecture-recital;
2. Final oral examination on the history, literature, and practice of church music; and
3. Participation in the music of the University Chapel serves as a practicum (non-credit).

C. Church Music, Choral Specialization

The prerequisite degree for this concentration is a Bachelor of Music in voice, choral conducting or church music.

MUS 227 Advanced Conducting, Choral	2 Cr.
MUS 228 Advanced Conducting, Choral	2 Cr.
MUS 274 History of Church Music	2 Cr.
MUS 300 Applied Music (voice)	4 Cr.
MUS 350 Choir	2 Cr.
MUS 390 Research Project (in the area of church music)	3 Cr.
Elective (strongly recommended):	
Theology 255 Principles and Forms of Worship	3 Cr.
Total	18 Cr.

Additional requirements:

1. Recital or lecture-recital;
2. Final oral examination on the history, literature, and practice of church music; and
3. Participation in the music of the University Chapel serves as a practicum (non-credit).

D. Music Education

The prerequisite degree for this concentration is a bachelor's degree in music education or its equivalent.

MUS 200 Applied Music	2 Cr.
MUS 223 Pedagogy	2 Cr.
MUS 232 Workshop in Music Education	2 Cr.
MUS 310 Problems in Music Education	3 Cr.
MUS 390 Research Project (in music education)	3 Cr.
Electives: two courses in the Department of Education, one at 300 level, should be elected to professionalize license)	6 Cr.
Total	18 Cr.

Two additional credits in ensemble (MUS 350, 352, 354, 356, or 358) are strongly recommended, bringing the total number of credits to 32 for this concentration.

Additional requirements:

1. Final comprehensive examination.

E. History of Music

The prerequisite degree for this concentration is a Bachelor of Music or a Bachelor of Arts in music including one year of language study.

MUS 200 Applied Music	4 Cr.
MUS 221 Pro-Seminar OR	2 Cr.
MUS 223 Pedagogy	
MUS 308 Seminar in Music History (in addition to the two seminars in the core)	3 Cr.
MUS 390 Research Project	3 Cr.
Electives: two courses at 300 level)	6 Cr.
Total	18 Cr.

Additional requirements:

1. A reading knowledge of either French or German must be demonstrated by examination; and
2. Final comprehensive examination required.



Course Offerings

All courses listed below are open only to those students who have been officially admitted to the Graduate Division.

Not more than fifteen semester hours of work for graduate credit may be carried in any one semester, nor more than nine semester hours of credit in any summer session. Permission to take a heavier load must be secured from the Director of the Graduate Division.

Students enrolled in the graduate program are expected not to enroll in undergraduate courses, unless approved by the Director of the Graduate Division.

Announcements for specific semesters and for summer sessions will indicate which courses are offered during those periods.

Art

211. Topics in the Theory and History of Art.

Cr. 1-4. An investigation of major periods or developments in the visual arts. Included may be historical topics such as ancient, medieval, renaissance, baroque, modern art since 1945, American painting, American architecture, or theory topics such as aesthetics, modern design or color. Field trip. May be repeated for credit provided topic is different.

220. Modern Art.

Cr. 3. A study of the major developments in painting and sculpture in the nineteenth and twentieth centuries. Field trip.

290. Independent Study.

Cr. 3. Investigation of a special topic through readings under supervision of a faculty adviser. Certain departments may also require research, creative work, and a concluding paper. A copy of the paper is to be filed in the Graduate Division Office upon completion of the project. Prerequisite: The project must be approved prior to registration.

299. Special Studies.

Cr. 1-3. Specialized work in the practice of art, the teaching of art and the history of art, arranged by a professor and one or more advanced students. Work in crafts, liturgical design, etc. may be included. The S/U grade option may be stipulated at the beginning of the course. May be repeated for credit. Field trip. Prerequisite: undergraduate art major.

Biology

257. Ecology.

Cr. 3. A study of organisms in relationship to their physical and biotic environment. There is

considerable field work in local terrestrial and aquatic habitats.

259. Bacteriology.

Cr. 3. A study of cell biology of bacteria and their viruses including morphology, growth and cultivation, physiology, environmental factors and genetics.

261. General Physiology.

Cr. 3. A study of the fundamental physiological activities of animal and plant cells and tissues. The course includes lectures, assigned readings and laboratory work in cell structure and cell organelles, energy conversion and synthesis, membrane transport, excitability and contraction.

275. Developmental Biology.

Cr. 3. An introduction to the descriptive and analytic study of plant and animal development and growth, with emphasis on higher plants and vertebrate animals.

290. Independent Study.

Cr. 3. Investigation of a special topic through readings under supervision of a faculty adviser. Certain departments may also require research, creative work, and a concluding paper. A copy of the paper is to be filed in the Graduate Division Office upon completion of the project. Prerequisite: The project must be approved prior to registration.

Chemistry

201. Elementary Physical Chemistry.

Cr. 3. A one-semester course in physical chemistry covering elementary thermodynamics and kinetics, together with their applications to various chemical systems.

205. Biochemistry.

Cr. 3. The chemistry of proteins, carbohydrates, fats and nucleic acids, and the changes these undergo during processes of digestion and metabolism; stress on physical biochemistry topics and enzyme kinetics.

238. Inorganic Chemistry.

Cr. 3. A systematic descriptive study of the elements and their compounds with emphasis on periodic law.

250. Advanced Organic Chemistry.

Cr. 3. A study of physical organic chemistry and strategy in modern organic synthesis. Topics include linear free energy relationships, the Woodward-Hoffman rules and semiempirical quantum mechanical calculation techniques for organic molecules.

290. Independent Study.

Cr. 3. Investigation of a special topic through readings under supervision of a faculty adviser. Certain departments may also require research, creative work, and a concluding paper. A copy of the paper is to be filed in the Graduate Division Office upon completion of the project. Prerequisite: The project must be approved prior to registration.

Communication

226. Advanced Clinical Methods in Communicative Disorders.

Cr. 3. A study of current therapy techniques and issues for the speech-language pathologist. Prerequisite: consent of the instructor.

233. Theatre for Children.

2+2, Cr. 3. University students work with children in a laboratory context and survey the literature and theory of theatre for children. Prerequisites: consent of the instructor.

235. Theatre as Art.

Cr. 3. A survey of theatrical spectacle as an art form paralleling developments in architecture, landscaping, painting, sculpture and interior design from the Middle Ages to the present. Class lectures and discussions are centered around slides and pictorial displays.

237. American Theatre.

Cr. 3. A survey of the American theatre and drama from the eighteenth through the twentieth centuries. The modern period, including playwrights such as O'Neill, Miller, Williams and Albee, and musical theatre is given special emphasis. Prerequisite: consent of the instructor.

256. Design for Stage and Television.

2+2, Cr. 3. The translation of written and verbal concepts into scenic elements of line, form, space, texture and color. The actor/audience relationship is examined with regard to design for the various forms of theatre and television.

275. Mass Media in Modern Society.

Cr. 3. Study of interaction between mass media and society. Freedom of the press theories, communication theory and relationships in the role of mass media with government, business, the courts and other segments of society.

290. Independent Study.

Cr. 3. Investigation of a special topic through readings under supervision of a faculty adviser. Certain departments may also require research, creative work, and a concluding paper. A copy of the paper is to be filed in the Graduate Division Office upon completion of the project. Prerequisite: The project must be approved prior to registration.

292. Supervision of Student Publications.

Cr. 3. Problems and practices of supervision of secondary school student newspapers, magazines, yearbooks and other school publications. Includes examination of state-adopted texts, the role of the high school press, budgeting and financial responsibilities, organizing staffs, working with school administration, establishing curriculum, reviewing other school publications and basic journalistic styles. Prerequisite: consent of chairperson of the department. Field trip and laboratory fee.

Economics

221. Intermediate Micro-Economic Theory.

Cr. 3. A study of the theoretical concepts and analytical techniques which economists employ to interpret the process of resource allocation under various systems of economic organization. Prerequisite: Micro Economic Theory.

222. Intermediate Macro-Economic Theory.

Cr. 3. A critical examination of theories of national income determination and of techniques for measuring and analyzing aggregate economic activity. Prerequisite: Macro Economic Theory.

250. Economic History of the United States.

Cr. 3. The history of the economic development of the United States from the colonial period to the present.

270. The History of Economic Thought.

Cr. 3. Economic thought in its historical development from the Mercantilists to the present day.

290. Independent Study.

Cr. 3. Investigation of a special topic through readings under supervision of a faculty adviser. Certain departments may also require research, creative work, and a concluding paper. A copy of the paper is to be filed in the Graduate Division Office upon completion of the project. Prerequisite: The project must be approved prior to registration.

299. Topics in Economics.

Cr. 3. Intensive study of a special topic in economics. The topic varies from year to year.

Education

240. Learning Exceptionalities.

Cr. 3. A course designed to introduce the student to the needs of exceptional children and the techniques of educating them.

274. Reading in the Content Areas.

Cr. 3. Lectures and demonstrations cover the reading process as it is involved in the various content areas of junior high, middle school and secondary school curricula. Specific techniques for developing competencies in diagnosis of reading difficulties and in instruction of reading in the content areas are given emphasis.

276. Foundations of Reading.

Cr. 3. A course of lectures and demonstrations which cover the reading process, appraisal of reading needs, directed reading activities and reading skill development.

278. Kindergarten Education.

Cr. 3. This course deals with the curriculum, teaching techniques and materials used in the nursery school and kindergarten. Special emphasis is given to the education needs of the pre-school child.

280. Introduction to Educational Media.

2+2, Cr. 3. An introduction into the ways of effective selection and utilization of media, both

material and equipment. The course includes laboratory experience in the production of materials and equipment operation in different media.

282. Educational Measurement.

Cr. 3. A course dealing with theory of measurement, interpretation of measurement data and testing in relation to pupil achievement and guidance.

284. Reading Disabilities.

Cr. 3. Lectures and demonstrations on the general nature of identification, diagnosis and classification of individuals with reading problems at all ages and levels of instruction. Prerequisite: six credit hours of course work in reading.

285. The Junior High/Middle School.

Cr. 3. A study of the development, organization and curriculum of junior high and middle schools with emphasis on the unique societal and educational roles played by these institutions.

286. Junior High/Middle School Teaching: Principles and Methods.

Cr. 3. A study of the principles, methods and materials involved in teaching in junior high and middle schools. Individualized instruction and interdisciplinary learning are emphasized.

287. Practicum in Junior High/ Middle School.

Cr. 3. Each student is assigned a minimum of 80 hours of supervised field experiences in a junior high or middle school. The experience includes planning, intermural athletic, and home room activities such as peer counseling, individual guidance, values clarification, exploratory courses and recreational events, working with students on individualized study projects and study skills. Prerequisites: Education 285 and 286 or concurrent enrollment.

289. Practicum in Corrective Reading.

Cr. 3. A laboratory experience which provides practice with primary, elementary, middle and junior high school children whose reading disabilities are mild to moderate. Training in evaluating reading performance, planning appropriate programs and implementing instructional strategies.

290. Independent Study.

Cr. 3. Investigation of a special topic through readings under supervision of a faculty adviser. Certain departments may also require research, creative work, and a concluding paper. A copy of the paper is to be filed in the Graduate Division Office upon completion of the project. Prerequisite: The project must be approved prior to registration.

299. Current Problems in Education.

Cr. 1-3. An intensive study of an area of education. Subtitles, amount of credit and content depend on instructor's choice and student interest.

308. Decision Making in Curriculum and Instruction.

Cr. 3. The course explores the foundations of school curriculum: social forces, human development, learning, and knowledge. Various instructional models and techniques are studied

and demonstrated. Specific areas of both elementary and secondary curriculum and instruction are dealt with in lecture, discussion, and individual research.

310. Advanced Educational Psychology.

Cr. 3. Basic study of psychological concepts and phenomena as related to the teaching-learning situation. Emphasis on the interpretation and analysis of psychological research concerning human behavior and development. Designed particularly for experienced teachers.

313. Historical and Philosophical Foundations of Education.

Cr. 3. A study of the history of American education, with attention to educational institutions, significant educational movements, and influential educational philosophies.

315. School and Society.

Cr. 3. A study of the relationships of the school, its students and its teachers, to the many forces and agencies of our society. The school as transmitter of heritage and agent of social change.

317. Research in Education.

Cr. 3. A course designed to develop skill in reading, interpreting, and evaluating research in education. Particular emphasis will be given to applications of research findings in educational areas of interest to students.

323. Research in Reading.

Cr. 3. A review of basic research in reading as applied to principles of learning, instructional processes, and curricular organizations. Prerequisites: Education 276 or equivalent and a course in statistics or measurement.

326. Diagnosis of Reading Difficulties.

Cr. 3. Theory and techniques of testing and evaluation in reading; analysis and interpretation in several areas including physical capacity, mental ability, emotional adjustment and academic achievement. Prerequisite: Education 276 or equivalent.

329. Clinical Practicum in Reading.

Cr. 3. Guided experience in clinical practice in reading instruction with emphasis on specific remedial theory and techniques. Prerequisite: Education 326 or the equivalent.

335. Current Educational Thought.

Cr. 3. A course designed to familiarize the student with current problems and innovations in the field of education. Extensive reading and discussion of selected essays, articles, and books dealing with issues in education are required. Prerequisite: consent of the instructor.

338. Supervision of Student Teaching and Other Clinical Experiences.

Cr. 3. A course dealing with the role and responsibilities of supervising student teaching and other clinical experiences at the elementary and secondary level. The historical development of student teaching and earlier field experiences, current programs, research regarding teacher effectiveness and data-gathering techniques for supervising prospective teachers will be studied.

340. Seminar in Education.

Cr. 3. An intensive study of a significant topic in education. Subtitles and course content will

depend on instructor's choice and student interest. This course may be repeated for credit if the topics are different.

390. Research Project.

Cr. 3. The study of a topic of special interest to students under regular supervision of a faculty adviser. A concluding paper of substantial proportions is required. A copy of the paper is to be filed in the Graduate Division Office upon completion of the project. Prerequisite: The project must be approved prior to registration.

English

200. Methods of Literary Criticism and Research.

Cr. 3. Designed to give students practical experience in the theories and methods of modern literary scholarship and criticism. The course aims to acquaint students with the presuppositions about literature which underlie critical writing and thus to provide standards for evaluating critical and scholarly works. It also provides intensive training in the analysis of literary texts.

209. Literature of the Medieval Period.

Cr. 3. A survey of medieval English lyric, ballad, narrative, drama, and romance (including Chaucer), with attention to intellectual, religious, and social background materials.

210. Shakespeare.

Cr. 3. Close readings of representative plays: histories, comedies and tragedies.

220. Literature of the Sixteenth and Seventeenth Centuries.

Cr. 3. An intensive survey of the poetry, prose, and drama of the English Renaissance, excluding Shakespeare, with attention to the historical and cultural backgrounds of the period. Representative writers may include More, Sidney, Spencer, Jonson, Donne, and Milton.

230. Literature of the Restoration and Eighteenth Century.

Cr. 3. An intensive survey of English poetry, fiction, non-fiction prose, and drama from 1660-1785, with attention to the historical and cultural background of the period. Representative writers may include Dryden, Swift, Pope, Fielding, Johnson, and Sheridan.

241. History of the English Language.

Cr. 3. An introduction to the development of modern English from Indo-European with emphasis upon structure and vocabulary.

242. Modern English Grammar.

Cr. 3. An introduction to such recent linguistic developments as structural grammar and transformational-generative grammar.

243. Introduction to Linguistics.

Cr. 3. A general introduction to the theory and methodology of linguistics. The course includes descriptive and historical linguistics, basic notions of grammatical theory and exploration of some of the relations of linguistics to other branches of knowledge. The presentation of

general principles is supplemented by practical problems in linguistic analysis.

256. The Novel.

Cr. 3. A study of representative English novels of the eighteenth and nineteenth centuries, with discussion of the social background.

260. Modern Drama.

Cr. 3. A study of plays typical of the various phases of the development of British and American drama after 1870, with some attention to related Continental drama.

270. Modern Fiction.

Cr. 3. Readings of representative works of the most important British and American novelists of the twentieth century, with emphasis on various theories of fiction dominant during the period.

275. Modern Poetry.

Cr. 3. Readings in selected modern poets and their forerunners, especially the French Symbolists. The British and American poets included may range from Yeats and T.S. Eliot to Auden, Robert Lowell and other contemporary figures.

279. Literature for Adolescents.

Cr. 3. A survey, by types, of distinguished literature suitable for students in secondary schools. Emphasis on the reading of selected books representing the wide range of literature for adolescents, and the developing of analytical and evaluative techniques. Introduction to bibliographical aids, review media, and current research in the field.

290. Independent Study.

Cr. 3. Investigation of a special topic through readings under supervision of a faculty adviser. Certain departments may also require research, creative work, and a concluding paper. A copy of the paper is to be filed in the Graduate Division Office upon completion of the project. Prerequisite: The project must be approved prior to registration.

295. Topics in Literature.

Cr. 2 (seven week course) -3. An open-topic course, which may concern a single writer or group of writers; a literary type or theme; a contemporary art form (e.g., development of the cinema), or an aspect of modern popular culture (e.g., science fiction and fantasy).

303. Seminar in Literature for Children.

Cr. 3. A study of the great children's literature of the past and the present, of the value that that literature holds for children, and of the criticism of that literature with the aim of developing a set of critical standards for the evaluation of books for children; a study of criteria for selecting books for school use. This course includes a scrutiny of representative scholarship as well as the handling of many bibliographical tools.

309. Theory and Practice of Expository Writing.

Cr. 3. Readings and lectures in the theory of exposition; practice in analyzing essays and in writing various forms of exposition; study of the principles of teaching expository writing.

310. Studies in Nineteenth Century British Literature.*

Cr. 3. Selected writers from the Romantic and/or Victorian Period are read in considerable depth, from a special critical, historical or cultural viewpoint.

315. Shakespeare and His Contemporaries.*

Cr. 3. A concentrated study of a selection of works by Shakespeare (or by Shakespeare and some of his contemporaries), to reveal both his debts to and his transcendence above the literary, intellectual, and social conventions of his day. The emphasis is largely, though not exclusively, on dramatic literature.

320. Studies in Nineteenth Century American Literature.*

Cr. 3. A study of several important American writers of the nineteenth century, selected on the basis of theme, genre, or relation to a particular literary movement or intellectual background.

325. The Western Tradition I.

(Also offered as History 325.) Cr. 2. A study of some of the important aspects of the heritage that has come down to us from the ancient Greek, Roman, and Judeo-Christian cultures. This course will be devoted, for the most part, to a close reading of important selected texts.

326. The Western Tradition II.

(Also offered as History 326.) Cr. 2. A study of some of the more important aspects of the heritage that has come down to us from the Middle Ages, the Renaissance, and the Reformation. This course will be devoted, for the most part, to a close reading of important selected texts.

335. Studies in Modern Literature.*

Cr. 3. Topic is open, and determined chiefly by expressions of student interest. Thorough investigation of a significant theme, intellectual or cultural trend, movement, or school of writers within the past hundred years. Recent topics include: The Existential Novel; Studies in Poetic Evaluation; The American Short Story.

390. Research Project.

Cr. 3. The study of a topic of special interest to students under regular supervision of a faculty adviser. A concluding paper of substantial proportions is required. A copy of the paper is to be filed in the Graduate Division Office upon completion of the project. Prerequisite: The project must be approved prior to registration.

261. Seminar in French Classical Literature.

Cr. 3. Study of selected topics in the literature of the seventeenth and early eighteenth centuries.

262. Seminar in French Literature of the Enlightenment.

Cr. 3. Selected areas of study in the writings of pre-revolutionary France.

263. Seminar in French Literature of the Nineteenth Century.

Cr. 3. Study of such topics as Romanticism, Realism and Naturalism in the French novel, theatre or poetry.

264. Seminar in Contemporary French Literature.

Cr. 3. Study of literary trend-setters in the novel, drama or poetry of France before and after World War II.

290. Independent Study.

Cr. 3. Investigation of a special topic through readings under supervision of a faculty adviser. Certain departments may also require research, creative work, and a concluding paper. A copy of the paper is to be filed in the Graduate Division Office upon completion of the project. Prerequisite: The project must be approved prior to registration.

GERMAN

230. German Civilization.

Cr. 3. An historical survey of the German cultural heritage in the fields of history, philosophy, religion, sociology and the fine arts. Prerequisite: German 110, 112 or 120.

260. Studies in the History of German Literature.

Cr. 3. Selected periods from the history of German literature. Course may be repeated provided there is no duplication of material.

290. Independent Study.

Cr. 3. Investigation of a special topic through readings under supervision of a faculty adviser. Certain departments may also require research, creative work, and a concluding paper. A copy of the paper is to be filed in the Graduate Division Office upon completion of the project. Prerequisite: The project must be approved prior to registration.

LATIN

220. Survey of Latin Literature I.

Cr. 3. Latin poetry and prose of the Roman Republic.

221. Survey of Latin Literature II.

Cr. 3. Latin poetry and prose of the Roman Empire.

290. Independent Study.

Cr. 3. Investigation of a special topic through readings under supervision of a faculty adviser. Certain departments may also require research, creative work, and a concluding paper. A copy of the paper is to be filed in the Graduate Division Office upon completion of the project.

Foreign Languages and Literatures

FRENCH

260. Seminar in French Renaissance Literature.

Cr. 3. Study of individual genres, authors, movements or aspects of French literature of the Renaissance.

All courses designated by an asterisk () may vary in content depending on the instructor and the year given. Such courses may be taken twice for credit, provided that the topics are different or that there is no significant overlapping in the reading lists.

Prerequisite: The project must be approved prior to registration.

Geography

266. History of Geography.

Cr. 3. Readings, papers and discussion on the development of geographic thought especially in the nineteenth and twentieth centuries; on basic concepts of the field; on the place of geography within thought and value systems, and on the contributions of major geographers, past and present, to the discipline and to the large world of thought.

270. Political Geography.

Cr. 2. An investigation of the relations among political activities and organizations and the geographic conditions within which they develop. Political power is discussed in terms of spatial, human, cultural and ethnic geography.

271. Selected Topics in Physical Geography.

Cr. 2-3. Advanced studies in physical geography. Such topics as weather forecasting, applied climatology, landform analysis and the development of environmental impact statements are considered. May be repeated when the topic is different. Prerequisites: Geography 3 or 4 or the equivalent and consent of the instructor.

274. Historical Geography of the United States.

Cr. 3. A regional treatment of the exploration, colonization, territorial expansion, migration, transportation, settlement and economic development of our country in relation to the physical environment. The course is primarily designed for students majoring in one of the social sciences.

276. The Geography of World Affairs.

Cr. 2. A workshop course to develop the technique of interpreting current world events in the geographic framework in which the events occur.

278. Field Study.

0+4, Cr. 2-3. A course designed to develop methods and techniques of geographic field work. May include a week of intensive work at a field site at a time when the University is not in session, possibly in late summer. Additional fees may be charged to cover expenses. Prerequisite: consent of the Department Chair.

290. Independent Study.

Cr. 3. Investigation of a special topic through readings under supervision of a faculty adviser. Certain departments may also require research, creative work, and a concluding paper. A copy of the paper is to be filed in the Graduate Division Office upon completion of the project. Prerequisite: The project must be approved prior to registration.

310. Cultural Geography of the Western World.

Cr. 3. A geographic appraisal of the European-American regional patterns of culture.

315. Cultural Geography of the Non-Western World.

Cr. 3. A geographic appraisal of the cultural regional patterns of the non-Western world.

320. American Resources.

Cr. 3. A study of the nature and function of natural resources of the United States in the context of prevailing physical and cultural conditions.

390. Research Project.

Cr. 3. The study of a topic of special interest to students under regular supervision of a faculty adviser. A concluding paper of substantial proportions is required. A copy of the paper is to be filed in the Graduate Division Office upon completion of the project. Prerequisite: The project must be approved prior to registration.

History

EUROPEAN HISTORY

211. Greek and Roman Civilization.

Cr. 3. A study of the Greek and Roman political, social and intellectual development from the Mycenaean period to the fourth century A.D.

212. Europe in the Age of the Reformation.

Cr. 3. A study of the political, socio-economic and religious conditions in Europe under the impact of the Protestant Reformation.

213. History of Modern England.

Cr. 3. A study of English history in the eighteenth, nineteenth and twentieth centuries. Stress is on understanding the political, cultural and industrial development of England as a great power and its position in the contemporary world.

214. The British Imperial Experience.

Cr. 3. A study of the British empire, emphasizing its evolution in the nineteenth and twentieth centuries. Particular attention is given to an introduction of the Old Dominions (Canada, Australia, New Zealand and South Africa), to the British in India and to interpretations of imperialism.

215. Contemporary Europe.

Cr. 3. A study of the European scene from the Great Depression, Nazi Germany and World War II to the present.

HISTORY OF THE AMERICAS

221. The American Revolution, 1763-1789.

Cr. 3. A detailed study through readings and discussion of the unresolved conflicts between Great Britain and her American colonies; the political, military and social aspects of the revolution; and the post-war problems culminating in the adoption of the Constitution.

222. Slavery, Abolitionism and Sectionalism, 1815-1860.

Cr. 3. A detailed study through readings and discussion of the institution of slavery, the growth of abolitionism and other reform movements, and the development of sectionalism leading to the outbreak of the Civil War.

223. Civil War and Reconstruction.

Cr. 3. A study of the great watershed conflict in American history, with special emphasis on the problems of Black Americans.

224. Depression and War: The United States, 1929-1945.

Cr. 3. This course examines the nature of the Great Depression and its effects on the relationship of government to citizens in the United States. It also traces the European and Far Eastern origins of the American involvement in World War II as well as the diplomatic and military conduct of that war.

225. The Age of Anxiety: United States since 1945.

Cr. 3. An examination of the post-war American response to the prospect of living in an uncertain world.

226. American Constitutional History.

Cr. 3. An examination of the growth of the American constitution from its colonial origins to the present. Emphasis is placed on such developments as the Constitution's formation, its testing in the Civil War and its adjustment to the problems of twentieth century society.

227. History of American Political Parties.

Cr. 3. A study of the development of American political parties from their appearance in the eighteenth century to the present. Emphasis is placed on the evolution of political leadership, the creation of coalitions and political campaign behavior.

231. History of Mexico.

Cr. 3. A study of the struggle for political, economic and cultural identity in America's southern neighbor.

NON-WESTERN HISTORY

241. History of Modern China.

Cr. 3. A study of the decline of traditional civilization resulting from domestic crises and foreign pressures, and the search for a new orthodoxy in the Chinese revolution.

242. History of Modern Japan.

Cr. 3. A study of Japan's rise to its position as a world power with emphasis on the consequent social dislocations in the twentieth century.

SPECIALIZED OFFERINGS

260. Topics in History.

Cr. 3. An in-depth study of an historical topic, problem or issue. Topics vary according to student interest and instructor choice. Possible topics include American colonial history, the history of journalism, the Renaissance, the French revolution, traditional Chinese culture, and the history of women. This course may be repeated for credit if the topics are different.

272. Reading and Discussion Seminars.

Cr. 2-3. Full- or half-semester courses cover a variety of subject areas with subtitles and content dependent on student interest and instructor choice. In recent years these have included Slavery in the Americas, History of the American South, Revolutionary Russia, Vietnam War through Film and Literature, Pearl Harbor, American Immigration History and Cuban Revolution. This course may be repeated for credit if topics are different.

280. Supervised Study.

Cr. 2-3. An opportunity for students to read a number of significant works on a given topic in history, or to do research and write a major paper on a topic not covered in any scheduled offering of the Department. Open to students who have taken at least eighteen credit hours of history and who have obtained the prior consent of both the instructor and the Chair of the Department. If the student chooses the research option, he must have completed History 170 before undertaking this course. This course may be taken only once from a given instructor, only once per subject area and only once for a thirty-hour major.

290. Independent Study.

Cr. 3. Investigation of a special topic through readings under supervision of a faculty adviser. Certain departments may also require research, creative work, and a concluding paper. A copy of the paper is to be filed in the Graduate Division Office upon completion of the project. Prerequisite: The project must be approved prior to registration.

296. The Interpretation of History.

Cr. 2. An introduction to selected major historians and their approaches to problems of interpretation faced by students of history. Prerequisite: at least six credit hours of history.

325. The Western Tradition I.

(Also offered as English 325.) Cr. 2. A study of some of the important aspects of the heritage that has come down to us from the ancient Greek, Roman, and Judeo-Christian cultures. This course will be devoted, for the most part, to a close reading of important selected texts.

326. The Western Tradition II.

(Also offered as English 326.) Cr. 2. A study of some of the more important aspects of the heritage that has come down to us from the Middle Ages, the Renaissance, and the Reformation. This course will be devoted, for the most part, to a close reading of important selected texts.

335. Problems in European History.

Cr. 3. An intensive study of a significant period of movement in European history. Subtitles and content will depend upon instructor's choice and student interest. Normally, this course will require a major paper.

336. Problems in United States History.

Cr. 3. An intensive study of a significant period or movement in American history. Subtitles and content will depend upon instructor's choice and student interest. Normally, this course will require a major paper.

337. Problems in East Asian History.

Cr. 3. An intensive study of a significant period or movement in East Asian history. Subtitles and content will depend upon instructor's choice and student interest. Normally, this course will require a major paper.

356. Latin America in the 20th Century.

Cr. 3. A study of the Latin America peoples since 1900, their internal problems, policies, and foreign relations. Attention will be centered upon Mexico and the Caribbean.

390. Research Project.

Cr. 3. The study of a topic of special interest to students under regular supervision of a faculty adviser. A concluding paper of substantial proportions is required. A copy of the paper is to be filed in the Graduate Division Office upon completion of the project. Prerequisite: The project must be approved prior to registration.

Home Economics

290. Independent Study.

Cr. 3. Investigation of a special topic through readings under supervision of a faculty adviser. Certain departments may also require research, creative work, and a concluding paper. A copy of the paper is to be filed in the Graduate Division Office upon completion of the project. Prerequisite: The project must be approved prior to registration.

Mathematics and Computer Science

MATHEMATICS

241. Laboratory in Elementary Mathematics I.*

0+1, Cr. 0. This course is designed to provide an opportunity for prospective elementary teachers to learn mathematical concepts in an active, materials-oriented context and to acquaint them with materials appropriate for use in the elementary school. Topics correspond to those in Mathematics 243. Prerequisite: concurrent registration in Mathematics 243. S/U grade.

242. Laboratory in Elementary Mathematics II.*

0+1, Cr. 0. A continuation of Mathematics 241. Topics correspond to those in Mathematics 244. Prerequisite: concurrent registration in Mathematics 244. S/U grade.

243. Mathematics for Elementary Teachers I.

Cr. 4. This course is intended for teachers in the elementary schools. Topics include elementary logic, sets, problem solving, numeration systems, the whole number system, the rational number system and elementary number theory. Laboratory 241 to be taken concurrently.

244. Mathematics for Elementary Teachers II.

Cr. 4. A continuation of Mathematics 243. Topics include two- and three-dimensional geometry, measurement, functions, graphing, probability and statistics. Prerequisite: Mathematics 243. Laboratory 242 to be taken concurrently.

290. Independent Study.

Cr. 3. Investigation of a special topic through readings under supervision of a faculty adviser. Certain departments may also require research, creative work, and a concluding paper. A copy

of the paper is to be filed in the Graduate Division Office upon completion of the project. Prerequisite: The project must be approved prior to registration.

COMPUTER SCIENCE

237. Algorithms and BASIC Programming I.

Cr. 3. A fundamental course in algorithm development and problem solving and an introduction to the use of a computer system with special emphasis on the programming constructs in the language BASIC. In order to solve problems in a computer environment the student designs elementary algorithms and writes, debugs and documents BASIC programs for the implementation of these algorithms. Includes a course project.

238. Algorithms and BASIC Programming II.

Cr. 3. A continuation of Computer Science 237, with emphasis on data structures and the development of structure and discipline in program design and style, especially for intermediate size programs. Prerequisite: Computer Science 237.

257. Algorithms and PASCAL Programming I.

Cr. 3. A fundamental course in algorithm development and problem solving and an introduction to the use of a computer system with special emphasis on the programming constructs in the language PASCAL. In order to solve problems in a computer environment, the student designs elementary algorithms and writes, debugs and documents PASCAL programs for the implementation of those algorithms. Includes a class project.

258. Algorithms and PASCAL Programming II.

Cr. 3. A continuation of Computer Science 257, with emphasis on data structures and the development of structure and discipline in program design and style, especially for intermediate size programs. Prerequisites: Computer Science 257.

290. Independent Study.

Cr. 3. Investigation of a special topic through readings under supervision of a faculty adviser. Certain departments may also require research, creative work, and a concluding paper. A copy of the paper is to be filed in the Graduate Division Office upon completion of the project. Prerequisite: The project must be approved prior to registration.

Music

Note: No more than ten credits in applied music, and no more than fifteen in applied music and composition combined, may be counted toward a degree.

215. Liturgical Organ Playing.

Cr. 2. A practical course in playing hymns and chants, accompanying, realization of figured bass, score reading and improvising in small

*Students enrolled in Math 241 or Math 242 will be required to complete all of the laboratory experiences, and, in addition, they will be required to write a brief paper summarizing the laboratory activities and discussing the implication for elementary education.

forms. The historic and current roles of the organ in the liturgy are discussed. Prerequisites: three years of organ study and Music 14, or permission of the instructor. Offered in alternate years.

221. Pro-Seminar in Music.

Cr. 2-3. An intensive study of a limited area in the history or theory of music. This course may be repeated for credit. Prerequisite: consent of the Chair of the Department. Offered in alternate years.

223. Pro-Seminar in the Pedagogy of Music.

Cr. 2. A consideration of the problems of teaching basic musicianship at all levels. Special attention is given to the adaptation of basic principles to the media of most interest to the members of the pro-seminar. Prerequisite: consent of the Chair of the Department.

226. Advanced Conducting, Instrumental.

Cr. 2. A study of instrumental scores, conducting techniques and materials.

227. Advanced Conducting, Choral.

Cr. 2. A course for school musicians and professional church musicians dealing with advanced problems in choral conducting. Prerequisite: Music 114 or the equivalent.

228. Advanced Conducting, Choral.

Cr. 2. A continuation of Music 227. Prerequisite: Music 227 or the equivalent.

232. Workshop in Music Education.

Cr. 1-2. A study of current topics in music education in summer workshop sessions of one or two weeks.

235. Music Theory.

Cr. 3. A comprehensive study of music of the 20th century including analysis and creative writing. Systems of analysis developed by Hindemith and Forte are employed as well as investigations of rhythmic theory, information theory, serial procedures and phenomenology. Prerequisite: Music 64 or permission of the instructor.

236. Music Theory.

Cr. 3. An intensive study of musical form, including contrapuntal forms, rondo, sonata-allegro, sonata-rondo and concerto and their historical evolution. Also included is a study of the analytical methods and teachings of Heinrich Schenker. Prerequisite: Music 64 or permission of the instructor.

271. Hymnology.

Cr. 2. A study of the Christian hymn from its earliest sources to the present day. Prerequisites: junior standing and consent of the Chair of the Department. Offered in alternate years.

274. History of Church Music.

Cr. 2. A study of the development of church music from the earliest history of the Church in the Old Testament to the present, with special emphasis on the period from Luther to Bach. Prerequisites: junior standing and consent of the Chair of the Department. Offered in alternate years.

290. Independent Study.

Cr. 3. Investigation of a special topic through readings under supervision of a faculty adviser. Certain departments may also require research, creative work, and a concluding paper. A copy of the paper is to be filed in the Graduate Division Office upon completion of the project. Prerequisite: The project must be approved prior to registration.

308. Seminar in Music History.

Cr. 3. A study in depth of a specific period or problem in the history of music. Topics covered will change from semester to semester. This course may be repeated for credit. Prerequisites: Music 64 and 104 or the equivalent.

310. Problems in Music Education.

Cr. 3. A concentrated study of specific areas of music education. Topics to be covered will change from semester to semester. This course may be repeated for credit if the topics are different. Prerequisite: consent of the chairperson of the department.

390. Research Project.

Cr. 3. The study of a topic of special interest to students under regular supervision of a faculty adviser. A concluding paper of substantial proportions is required. A copy of the paper is to be filed in the Graduate Division Office upon completion of the project. Prerequisite: The project must be approved prior to registration.

A. Private Instruction.*

One credit hour provides one-half hour per week of private instruction and presumes at least three hours of practice per week for a period of one semester. Two credit hours provide one-half hour per week of private instruction and presume at least six hours of practice per week for a period of one semester. Three credit hours provide 45 minutes of private instruction per week and presume at least nine hours of practice per week. Private instruction is supplemented by repertoire classes in the various media that meet one 50-minute period per week.

200. Cr. 1-2.

Open to qualified graduate students who have good reason to include such study in their program. Prerequisite: approval of the chairperson of the department. Such approval is generally granted only to students that have the equivalent of an undergraduate major in music.

300. Cr. 2-3.

Open only to graduate students holding a Bachelor of Music degree with a major in the given instrument or having the equivalent level of performing ability. Admission by audition only and with the approval of the Chair of the Department.

Media:

<i>Voice</i>	<i>Classical Guitar</i>
<i>Piano and Jazz</i>	<i>Flute</i>
<i>Piano</i>	<i>Oboe</i>
<i>Harp</i>	<i>Clarinet</i>
<i>Harpsichord (by audition only)</i>	<i>Bassoon</i>
	<i>Saxophone</i>

*See page 27 for appropriate fees.

<i>Organ (by audition only)</i>	<i>French Horn</i>
<i>Organ Improvisation (by audition only)</i>	<i>Trumpet</i>
<i>Violin</i>	<i>Trombone</i>
<i>Viola</i>	<i>Baritone Horn</i>
<i>Violoncello</i>	<i>Tuba</i>
<i>Contrabass</i>	<i>Percussion</i>
	<i>Electronic Music</i>

Composition. A program of study dealing creatively with the problems of musical form. Prerequisites: consent of the instructor and consent of the Chair of the Department.

B. Instruction in Ensemble Music.

Instruction in one of the following ensembles for a period of one semester gives one credit hour: If a student has earned eight credit hours in ensemble music, any additional enrollments are graded on the S/U basis.

All ensemble courses are available for graduate credit on either the 200 or 300 level. Enrollment is limited to students who have specialized training and background to participate in the ensemble in some capacity (such as assistant conductor, section leader or project director) to be determined by the instructor of the ensemble and with the approval of the Chair of the Department.

250, 350. Choir.

Admission by audition only. This includes Chapel Choir, Concert Choir, Kantorei, Treble Choir and VU Show Revue. Also Choral Society, audition not required.

252, 352. University Bands.

Admission by audition only.

254, 354. University Symphony Orchestra.

Admission by audition only.

256, 356. Opera Workshop.

Admission by audition only.

258, 358. Chamber Music.

Admission by approval of the Chair of the Department. This credit may be earned by participation in the Collegium Musicum.

Philosophy

290. Philosophical Topics.

Cr. 3. An examination of the works of one major philosopher, such as Kant or Wittgenstein; or of a single philosophical problem area such as scientific explanation, behaviorism or free action; or of a single philosophical approach such as Positivism, Pragmatism or Phenomenology. This course may be repeated for credit if the topics are different.

290. Independent Study.

Cr. 3. Investigation of a special topic through readings under supervision of a faculty adviser. Certain departments may also require research, creative work, and a concluding paper. A copy of the paper is to be filed in the Graduate Division Office upon completion of the project. Prerequisite: The project must be approved prior to registration.

Physical Education

270. Movement and Learning.

2+2, Cr. 3. A study of the place of movement in the life of the child and the ways in which various types of activity can affect the development of the child.

290. Independent Study.

Cr. 3. Investigation of a special topic through readings under supervision of a faculty adviser. Certain departments may also require research, creative work, and a concluding paper. A copy of the paper is to be filed in the Graduate Division Office upon completion of the project. Prerequisite: The project must be approved prior to registration.

Political Science

255. Problems in State and Local Politics.

Cr. 3. A study in depth of important contemporary problems on the state or municipal level in the United States. Prerequisite: Political Science 41 or consent of the instructor.

256. Problems in American Politics.

Cr. 3. An intensive study of topics in the process, policies and functions of the American political system (e.g., political parties). Prerequisite: Political Science 40 or consent of the Chair of the Department.

290. Independent Study.

Cr. 3. Investigation of a special topic through readings under supervision of a faculty adviser. Certain departments may also require research, creative work, and a concluding paper. A copy of the paper is to be filed in the Graduate Division Office upon completion of the project. Prerequisite: The project must be approved prior to registration.

Psychology

242. Psychology of Childhood.

Cr. 3. Study of the maturational, cognitive, social and behavioral changes associated with the development of the child. Prerequisite: 6 credit hours of Psychology or consent of the instructor.

243. Adolescent and Early Adulthood Development.

Cr. 3. Analysis of the biological, psychological, sociocultural and historical contributions to behavior changes during the adolescent and early adulthood years.

252. Behavior Modification.

Cr. 3. The application of learning principles to the modification of human behavior. Discussions include ethical issues and current research relating to behavior management techniques as utilized in self control, education, institutions, business, social, personal and family interventions. Prerequisite: six credit hours of Psychology or consent of the instructor.

253. The Exceptional Child.

Cr. 3. Analysis of the impact of various perceptual, cognitive, physical and social handicaps upon the child. Attention is also given to the study of the gifted, creative child. Prerequisite: developmental psychology or educational psychology or consent of the instructor.

254. Testing and Measurement.

Cr. 3. Principles and methods of psychological measurement and evaluation with application to specific testing situations. Prerequisite: consent of the chair of the department.

256. Introduction to Counseling.

Cr. 3. A review of contemporary counseling theories and processes as they are applied to various problem areas.

265. Special Topics in Psychology.

Cr. 1-3. Selected topics based on the special interest areas of students and faculty. These topics have included aging, sex differences, drugs and behavior, community psychology, environmental psychology and altered states of consciousness. Topics and descriptions are announced in advance. Prerequisite: consent of the instructor or Chair of the Department.

290. Independent Study.

Cr. 3. Investigation of a special topic through readings under supervision of a faculty adviser. Certain departments may also require research, creative work, and a concluding paper. A copy of the paper is to be filed in the Graduate Division Office upon completion of the project. Prerequisite: The project must be approved prior to registration.

300. Seminar in Psychology.

Cr. 3. The analysis, assessment, and discussion of current topics in psychology. This course may be taken more than once for credit if the topics are different. Prerequisite: six hours of psychology or consent of the Chair of the Department.

301. Learning and Motivation.

Cr. 3. The study of the basic principles of learning and motivation with systematic treatment of major learning theorists.

303. Cognitive Processes.

Cr. 3. Analysis of various cognitive processes, such as concept formation, reasoning, problem solving, creativity, and language. Prerequisite: six hours of psychology or educational psychology.

310. Principles of Psychotherapy.

Cr. 3. Representative theoretical approaches to the process of personality change and to the techniques used in treating neurotic and psychopathic disturbances. Prerequisite: three hours of psychology at the graduate level.

315. Problems in Personality Theory.

Cr. 3. Problems focus on relationships among central concepts in personality theory, including the self-concept, basic motives, emotional conflicts, mechanisms of adjustment, and personality integration. Prerequisite: three hours of psychology at the graduate level.

390. Research Project.

Cr. 3. The study of a topic of special interest to students under regular supervision of a faculty adviser. A concluding paper of substantial proportions is required. A copy of the paper is to be filed in the Graduate Division Office upon completion of the project. Prerequisite: The project must be approved prior to registration.

Sociology

205 (formerly 200). Social Structures.

Cr. 1-3. Courses which focus on social phenomena involving structured or organized relationships among individuals, groups, processes and sets of beliefs or values. Topics may range from informal and unplanned relationships to intentionally developed large scale organizations, and may include social class, urban structure, occupations, sex roles, leisure and recreation, etc.

206. Urban Sociology.

Cr. 3. An examination of the city as a social system. Emphasis placed upon the historical, demographic, and ecological development of urban areas, along with an exploration of major problems confronting American cities. Development of urban life style is also examined.

210. Social Processes.

Cr. 1-3. Courses which focus on processes of social influence, differentiation, development, control or change. Topics may include socialization, collective behavior, death and dying, etc.

215 (formerly 220). Social Institutions.

Cr. 1-3. Courses which focus on socially shared beliefs and practices developed to deal with major social needs. Possible topics include religion, medicine, education, etc.

232. Probation and Parole.

Cr. 3. A critical analysis of probation and parole, and other community field services, with an emphasis on current trends. Option for Criminal Justice Concentration. Prerequisites: Sociology 3 and 131 or 132, or consent of the Chair of the Department.

233. Corrections.

Cr. 3. A critical examination of prisons, jails and community correctional services, with emphasis on current trends and issues. Option for Criminal Justice Concentration. Prerequisites: Sociology 3 and 131 or 132, or consent of the Chair of the Department.

234. Sociology of Law.

Cr. 3. The study of the relationships between law and society, including the nature and functions of law in society, the relationship between law and social change, and the relationships between the law and other social institutions. Option for Criminal Justice Concentration.

237. Law Enforcement.

Cr. 3. An examination of policing at the local, state and federal levels, from historical and contemporary points of analysis, with emphasis

on the relationship between law enforcement and other criminal justice agencies. Option for Criminal Justice Concentration. Prerequisites: Sociology 3 and 131 or 132, or consent of the Chair of the Department.

290. Independent Study.

Cr. 3. Investigation of a special topic through readings under supervision of a faculty adviser. Certain departments may also require research, creative work, and a concluding paper. A copy of the paper is to be filed in the Graduate Division Office upon completion of the project. Prerequisite: The project must be approved prior to registration.

301. Seminar in the Family.

Cr. 3. Analysis of the development of current theory and the nature of contemporary research problems on the family. Prerequisite: consent of the Chair of the Department.

302. Seminar in Criminal Justice and Criminology.

Cr. 3. Critical review of current theory, practice, and research in criminology and penology, or criminal justice. Prerequisite: consent of the Chair of the Department.

310. Seminar in Sociology.

Cr. 3. An investigation of selected topics and problems in sociology from the standpoint of sociology theory and current research. This course may be taken more than once for credit if the topics are different. Prerequisite: consent of the Chair of the Department.

390. Research Project.

Cr. 3. The study of a topic of special interest to students under regular supervision of a faculty adviser. A concluding paper of substantial proportions is required. A copy of the paper is to be filed in the Graduate Division Office upon completion of the project. Prerequisite: The project must be approved prior to registration.

Theology

238. Systematic Theology I.

Cr. 3. A study of the nature and task of systematic theology, emphasizing questions of prolegomena and method for theology in a secular context.

239. Systematic Theology II.

Cr. 3. Continuation of Theology 138 emphasizing the constructive task of contemporary systematic theology, and studying the structure and content of the Christian faith. Prerequisite: Theology 138 or consent of the Chair of the Department.

242. Christian Faith and Contemporary Politics.

Cr. 3. A study of how different Christian thinkers have understood the nature and function of government and the relation of the Christian faith to political action.

255. Principles and Forms of Worship.

Cr. 3. A study of the principles and language of worship with emphasis on the theology of worship, ritual, the role of tradition, and the relationship between worship and contemporary culture.

271. Theology and the Human Sciences.

Cr. 3. An investigation of areas of common interest in the fields of Christian theology and the social or personality sciences.

290. Independent Study.

Cr. 3. Investigation of a special topic through readings under supervision of a faculty adviser. Certain departments may also require research, creative work, and a concluding paper. A copy of the paper is to be filed in the Graduate Division Office upon completion of the project. Prerequisite: The project must be approved prior to registration.

Academic Policies

GRADING SYSTEM AND QUALITY POINTS

The course grades reported and recorded in the Registrar's Office are as follows. The corresponding number of quality points per credit hour are also indicated.

Grade		Quality Points/Cr.
A	excellent	4.0
A—		3.7
B+		3.3
B	good	3.0
B—		2.7
C+		2.3
C	satisfactory	2.0
C—		1.7
D+		1.3
D	less than satisfactory, but	1.0
D—	passing	0.7
F	failure	0.0
I	incomplete	—
W	authorized withdrawal	—

Grades A through C give credit toward a graduate degree. Graduate credit may be received for grade of C and above, but not more than three semester credit hours of C or C+ work may be counted to meet degree requirements.

Students must maintain a grade point average of 3.0 (B=3.0) in all graduate work undertaken at Valparaiso University. Graduate students may not use the S/U grading option for credit toward the degree.

The grade I (incomplete) may, at the discretion of the instructor, be given to a student whose completed work in a course indicates the probability of his/her passing the course but who has failed to complete a segment of the assigned work of the course because of circumstances beyond his/her control.

An I (incomplete) received in one semester or summer session must be removed by the beginning of the official examination period of the next succeeding semester or it automatically becomes a grade of F. The student's deadline for submitting the outstanding work to the instructor shall be one week before that date.

Authorized withdrawal from a course or from the University within the published deadlines gives the grade of W to each

course withdrawn. This mark carries no credit. Only in exceptional cases, such as prolonged or serious illness, will the Graduate Director permit a student to withdraw from a course without a grade of F after the end of the seventh week of the semester or after the third week of a summer session.

CREDIT HOURS

A **credit hour** (abbreviated Cr. in lists of courses) represents one hour of recitation or lecture, or two or more hours of laboratory, each week for one semester. If time outside the laboratory is required to prepare laboratory notes or reports, two hours may be equivalent to one period of class work. Drawing, shop work and other courses demanding no outside preparation require a minimum of three hours for one credit hour. See specific course descriptions for the exact number of hours required.

ACADEMIC PREREQUISITES

Certain courses may be taken only by students who have had previous training in the same subject. The extent or level of such preparation is usually stated in the course description. Unless otherwise noted, these statements refer to college or graduate level work.

COURSE LOAD

Students are strongly urged not to take more than nine credits in the first session they attend. Permission to take additional credits will not be granted unless there is strong evidence of exceptional academic capability.

CHANGE OF SCHEDULE

Regular courses may be added or dropped and sections changed by means of a drop-add card available in the Registrar's Office or the Graduate Division Office, until 5:00 P.M. on the seventh class day of the semester.

Students may drop a regular course with a grade of W by filing a drop card with the Registrar's Office or the Graduate Division Office between the last date to file drop-add cards and 5:00 P.M. on the 45th class day of the semester. The card must be signed by the Director of the Graduate

Division. After this period, students will receive an F if they drop a course, unless a petition to the Graduate Division is approved because of special circumstances, such as serious or prolonged illness. Students who drop courses after the first week should read the regulations in this bulletin concerning grades of W and F. Notifying only the instructor of an intent to add or drop a course does not constitute an official enrollment or withdrawal.

Exact dates are listed in the University Calendar on page 28.

INDEPENDENT STUDY

With the permission of the chairperson of the department concerned and of the Graduate Council, a student may earn up to six of the thirty or thirty-three semester hours required for the degree by means of independent study projects. No students may apply for permission to undertake an independent study project until they have satisfactorily completed at least twelve semester hours of their approved master's degree program.

Before registering for an independent study project, a student must place on file with the Graduate Office an outline of the project, together with a bibliography, which has the written approval of the directing professor and the department chairperson. Forms are available in the Graduate Division Office.

An independent study project will be recorded as either course 290 or course 390 of the department concerned, depending upon the nature of the project. Neither course may be repeated for credit toward the fulfillment of degree requirements. Course 390 may be taken only in departments that offer 300-level graduate courses.

The titles and descriptions of these courses are as follows:

290. Independent Study.

Cr. 3. Investigation of a special topic through readings under supervision of a faculty adviser. Certain departments may also require research, creative work, and a concluding paper. A copy of the paper is to be filed in the Graduate Division Office upon completion of the project. Prerequisite: The project must be approved prior to registration.

390. Research Project.

Cr. 3. The study of a topic of special interest to students under regular supervision of a faculty adviser. A concluding paper of substantial

proportions is required. A copy of the paper is to be filed in the Graduate Division Office upon completion of the project. Prerequisite: The project must be approved prior to registration.

No student may register for an independent study project during the final summer session of his/her program and no student should expect to start and complete an independent study project in one summer session. An offered class may not be taken as an independent study.

An offered undergraduate only class may not be taken as a graduate level independent study unless a petition has been submitted and approved by the Graduate Council prior to registration.

ALL independent studies and research projects must be approved by the Director of the Graduate Division prior to registration for that project.

CREDIT FOR WORKSHOPS

All graduate coursework offered by Valparaiso University will be accepted for credit towards a master's degree. However, a candidate may not submit more than six credits of workshops and one-credit courses to fulfill degree requirements.

TRANSFER CREDITS

A maximum of six semester hours of transfer credit from another accredited graduate institution will be accepted for the degree.

Transfer credits may not be used to meet 300-level course requirements. No course presented with a grade of less than B (3.0) will be considered for transfer. These credits must have been earned not more than five years before the student is admitted to the graduate program. Transfer credit is subject to all of the restrictions that apply to short-term classes and workshops. With the exception of travel-study, only graduate courses that meet for more than one calendar week will be eligible for credit transfer. In addition, courses that carry two semester credits must meet for a minimum of two calendar weeks, while courses that carry three semester credits must meet for a minimum of three calendar weeks. Transfer for travel-study will not exceed two credits per calendar week. All requests for transfer must be in writing and will be evaluated by the

Director of the Graduate Division. Forms for transfer of credit are available in the Graduate Division Office.

Graduate work in areas or disciplines not offered at Valparaiso University may be used to fulfill elective requirements of either the M.A.L.S. or M.Ed. degrees, providing that it is consistent with the University's concept of liberal studies.

PETITIONS

It is to students' advantage to adhere to published requirements and regulations. A petition for approval to deviate from requirements must be made to the Director of the Graduate Division.

APPEAL PROCEDURE

Written appeals of administrative decisions regarding students' admission, program, or completion of degree requirements may be filed with the Director of the Graduate Division for presentation to the Graduate Council.

DEGREE PLAN AND ADMISSION TO CANDIDACY

To become a candidate for a degree, students must have completed at least nine semester hours at Valparaiso University with a standing of a least 3.0 ($B=3.0$) and submit a degree plan approved by the adviser(s) to the Graduate Division. The degree plan must be filed before students have completed half of the graduate work. Submission and approval of this plan constitutes admission to candidacy. Forms for this purpose are available through the Graduate Division Office.

APPLICATION FOR GRADUATION

To receive the master's degree from Valparaiso University, students must make formal application to the Director of the Graduate Division within the first week of the term in which they expect to graduate. They must give evidence that they have fulfilled all requirements for the degree and receive the approval of the Graduate Council. Students must have on file a degree plan and application for candidacy (see above) to be eligible to receive a degree.

IMPORTANT SPECIAL NOTES

Credits earned more than five years prior to the date of admission are subject to re-evaluation and shall not be accepted toward a master's degree unless approved by the Graduate Director and the Graduate Council.

A course previously taken for undergraduate credit at Valparaiso University or elsewhere cannot be taken again as a graduate-undergraduate course for graduate credit.

Credits used to fulfill requirements for one degree may not be used toward another degree.

All coursework taken elsewhere which is to be applied to a Valparaiso University degree must be approved in advance. Forms are available in the Graduate Division Office.

All work for the master's degree must be completed within a period of five calendar years from the date of admission into the program. A student may petition for a maximum of one extension of up to five years.

Students should have frequent conferences with their advisers. This is especially important at the beginning of their degree program, at the time of filing for candidacy, and prior to graduation for the application for graduation.

TRANSCRIPTS OF ACADEMIC RECORDS

The Family Educational Rights and Privacy Act of 1974 (Buckley Amendment) provides, in part, that the institution will maintain the confidentiality of student academic records.

No one outside the University shall have access to, nor will the University disclose any information from, student academic records without the written consent of students, except to persons, organizations or agencies which are permitted to receive such information under the Act.

Official transcripts of academic records are released only upon the written request of the student. No transcript of a student's record is released until the student has met in full all obligations to the University. There is no charge for any transcript issued.

Financial Policies

Tuition, fees, and any other charges are due at the time registration is completed.

If a deviation is granted, the graduate student will then pay the undergraduate fee rate for those undergraduate courses.

Other fees are indicated in University bulletins covering summer session, evening offering, and the regular academic year.

REFUNDS

Students who withdraw from a class during the first seven weeks of either the fall or spring semesters are entitled to a partial refund of tuition charges, made in proportion to the refund schedule published in the University's General Catalog. To receive a refund, a formal withdrawal form must be completed and submitted to the Office of the Registrar.

Music fees are not refunded after the second week of a regular term.

In the cases of courses meeting for less than a full semester, contact the Office of Student Accounts for refund information.

Refund policies for the mini and regular summer sessions are stated in separate publications relating to those terms.

SCHOLARSHIP ASSISTANCE

Information concerning scholarship assistance for Graduate Division students is available from the Financial Aid Office.

TAX DEDUCTION

Internal Revenue Service regulations permit an income tax deduction for education expenses incurred during study undertaken to maintain or improve skills required in one's employment or other trade or business. Such expenses include registration fees, costs of travel, meals, and lodging.

EMPLOYER ASSISTANCE

Many corporations and agencies offer some type of tuition assistance to those who are continuing their educations. Students are encouraged to investigate such programs at their place of employment.

Fees

APPLICATION FEE

This fee of \$20.00 is to accompany the application for admission form. It is payable only once, upon initial application. It is not refundable.

TUITION

The tuition charge for graduate courses is \$95.00 per credit hour for the 1985-86 academic year.

LATE REGISTRATION FEE

This fee of \$40.00 becomes effective after the close of the last official day of formal registration. In no case will late registrants be exempted from this fee, unless for valid reasons they have been given written authorization for exemption by the Director of the Graduate Division.

PLACEMENT FEE

This fee of \$10.00 will be charged each teacher candidate who wishes to use the Teacher Placement Service. This fee provides placement service for one placement year (October 1 through September 30).

GRADUATION FEE

A graduation fee of \$20.00 is payable at the time of application for the degree.

APPLIED MUSIC FEES

The University encourages students to continue applied music instruction by charging modest fees for private lessons. Students pay a fee of \$75.00 per semester per course for instruction in private or class lessons in applied music. There is no additional charge for use of an instrument or practice room.

Students taking private lessons are held responsible for making arrangements with the instructor to complete all lessons during the semester. If the student is unable to complete within the semester the series of lessons for which he was assessed, a report should be made immediately to the Chairman of the Department of Music by the student.

TRANSCRIPT

No charge is made for any transcript issued. No official transcript of a student's record is released until the student has met in full his obligations to the University.

VEHICLE REGISTRATION

This fee of \$10.00 applies to the first registration and covers both semesters of the school year. For either semester of the school year, the first registration fee is \$5.00. For each additional vehicle registration, the fee is \$2.00.

Payee

Drafts, checks and money orders should be made payable to the
**Valparaiso University Association,
Inc.**



Chapel of the Resurrection

The Administration 1985-1986

President	Robert V. Schnabel, Ph.D.
Vice President for Academic Affairs	Richard P. Baepler, Ph.D.
Vice President for Admissions and Financial Aid	Dorothy P. Smith, Ph.D.
Vice President for Business Affairs	Fred W. Kruger, P.E., M.S. in M.E.
Vice President for Student Affairs	Daryll D. Hersemann, Ph.D.
Vice President for Public and Alumni Affairs	Richard P. Koenig, M.S.
Dean, College of Arts and Sciences	Forrest L. Vance, Ph.D.
Assistant to the Dean for Continuing Education	James Siebert, B.A.
Director, Graduate Division	Appointment Pending
Registrar	Ann F. Trost, B.A.
Assistant Registrar	James F. LePell, M.A.L.S.
Director of the Libraries	Margaret Perry, M.S.L.S.
Director, Student Loans and Accounts	Joel T. Speckhard, J.D.
Director of Valparaiso Union	William G. Smriga, M.S.
Director of University Police	W. Thomas Blanchard

The Graduate Council

The President
 The Vice President for Academic Affairs
 The Dean of Arts and Sciences

	Term Ends
Prof. Marcia Lewis	1986
Prof. Gerald Speckhard	1986
Prof. James Albers	1987
Prof. Nancy Sederberg	1987
Prof. David Rowland	1988
Prof. Edward Uehling	1988
Director of the Graduate Division	Ex Officio
Director of Continuing Education	Ex Officio

Office Phone Numbers

University Switchboard	464-5000
Graduate Division Office	464-5313
Evening Division Office	464-5313
Financial Aid Office	464-5015
Registrar's Office	464-5212
Student Accounts Office	464-5101
Department Offices (Selected)	
Education	464-5077
English	464-5279
History	464-5332
Music	464-5455
Psychology	464-5359
Book Center	464-5421
Health Center	464-5060
Radio Station WVUR (95 FM)	464-5202
Union Information Desk	464-5415
University Police	464-5430

Mailing Address:

Valparaiso University
Valparaiso, IN 46383-9978

UNIVERSITY CALENDAR FOR 1985-1986

1985

FALL SEMESTER

August 28, Wednesday, 8:00 a.m. Instruction begins.

September 3, Tuesday, 5:00 p.m. Deadline for late registration for fall semester.

September 5, Thursday, 5:00 p.m. Deadline for adding regular courses.

October 11, Friday. Free day. No classes.

October 19, Saturday. Homecoming day.

October 29, Tuesday, 5:00 p.m. Deadline for withdrawing from regular courses with grade of W.

November 22, Friday, 6:30 p.m. Thanksgiving recess begins.

December 2, Monday, 8:00 a.m. Thanksgiving recess ends.

December 13, Friday, 5:00 p.m. Deadline to officially withdraw from the University for Fall Semester.

December 13, Friday, 6:00 p.m. Instruction ends.

December 14, Saturday. Reading day.

December 16, Monday, 8:00 a.m. Final examinations begin.

December 20, Friday, 12:30 p.m. Final examinations end. Semester ends.

December 23, Monday, 5:00 p.m. Deadline for reporting all grades.

1986

SPRING SEMESTER

January 8, Wednesday, 8:00 a.m. Instruction begins.

January 14, Tuesday, 5:00 p.m. Deadline for late registration for spring semester.

January 16, Thursday, 5:00 p.m. Deadline for adding regular courses.

February 28, Friday, 6:30 p.m. Spring recess begins.

March 17, Monday, 8:00 a.m. Spring recess ends.

March 25, Tuesday, 5:00 p.m. Deadline for withdrawing from regular courses with grade of W.

March 28, Good Friday. No classes.

April 25, 26 and 27, Friday, Saturday and Sunday. Spring Festival.

May 6, Tuesday, 5:00 p.m. Deadline to officially withdraw from the University for Spring Semester.

May 6, Tuesday, 10:00 p.m. Instruction ends.

May 7, Wednesday. Reading day.

May 8, Thursday, 8:00 a.m. Final examinations begin.

May 13, Tuesday, 12:30 p.m. Final examinations end. Semester ends.

May 14, Wednesday, noon. Deadline for grades for all candidates for all degrees.

May 16, Friday, 5:00 p.m. Deadline for reporting all other grades.

May 18, Sunday. 112th Annual Commencement.

MINI SUMMER SESSION

May 19-June 12

REGULAR SUMMER SESSION

June 16-August 6

Certain other dates are observed annually by the University: Reformation Day, Ash Wednesday, and Ascension Day.

INDEX

	Page		Page
Accreditation	4	Psychology	21
Administration	29	Sociology	22
Admission	5	Theology	23
Fee	27	Credit	24
Requirements	5	Definition	24
Special Undergraduate	5	Restrictions	25
Academic records	26	Transfer	25
Appeal	26	Workshop	25
Calendar	30	Degrees	4
Certification	5	Master of Arts in Liberal Studies	8
Change of Schedule	24	Master of Education	9
Course Offerings	12-23	Master of Music	10
Art	12	Drop/Add Course Changes	24
Biology	12	Fees	27
Chemistry	12	Grading System	24
Communication	13	Graduation	26
Computer Science	19	Honor System	3
Economics	13	Independent Study	25
Education	13	Library	6
English	15	Living Accomodations	6
French	16	Non-Degree Students	4
Geography	17	Petitions	26
German	16	Refunds	27
History	17	Scholarships	27
Home Economics	19	Transcripts	26
Latin	16	Transfer Credits	25
Mathematics	19	Tuition	27
Music	19	Withdrawal	24
Philosophy	21	From a course	24
Physical Education	21	From the University	24
Political Science	21		

VALPARAISO UNIVERSITY CAMPUS

NUMERICAL LEGEND

- | | | | |
|-----------|--|-----------|---|
| 1 | Heimlich Hall | 36 | LeBien Hall — College of Nursing |
| 2 | Baldwin Hall | 37 | Linwood Apartments |
| 3 | Heritage Hall | 38 | Memorial Hall |
| 4 | DeMotte Hall | 39 | Guild Hall, Business and Registrar's Office |
| 5 | Moody Laboratory | 40 | Mueller Hall — Christ College |
| 6 | Lembke Hall | 41 | President's Home |
| 7 | Black Cultural Center | 42 | Valparaiso Union |
| 8 | Phi Sigma Epsilon Fraternity | 43 | Book Center |
| 9 | Delta Theta Phi Law Fraternity | 44 | Deaconess Hall |
| 10 | Lambda Chi Alpha Fraternity | 45 | Chapel Dean's Home |
| 11 | Sigma Phi Epsilon Fraternity | 46 | University Health Center |
| 12 | Phi Delta Theta Fraternity | 47 | Brandt Campanile |
| 13 | Phi Kappa Psi Fraternity | 48 | Chapel of the Resurrection |
| 14 | Phi Kappa Alpha Fraternity | 49 | Moellering Library |
| 15 | Speech and Drama Studio | 50 | Scheele Hall — Sorority Complex |
| 16 | Delta Sigma Phi Fraternity | 51 | Lankenau Hall |
| 17 | WVUR and <i>The Torch</i> Offices | 52 | Physical Plant Services/Stockroom |
| 18 | Theta Chi Fraternity | 53 | Student Counseling and Development Center |
| 19 | Sigma Tau Gamma Fraternity | 54 | Neils Science Center |
| 20 | Phi Mu Alpha Sinfonia Music Fraternity | 55 | Alumni Hall |
| 21 | Sigma Pi Fraternity | 56 | Wesemann Hall — School of Law |
| 22 | University Park Apartments | 57 | Meier Hall |
| 23 | Dickmeyer Hall | 58 | Brandt Hall |
| 24 | Art-Music Building | 59 | Brandt-Wehrenberg Cafeteria |
| 25 | Kroenke Hall and Theatre | 60 | Wehrenberg Hall |
| 26 | Athletic Recreation Center | 61 | Central Power House |
| 27 | Athletic Equipment House | 62 | Gellersen Center — College of Engineering |
| 28 | Loke Home Economics Center | 63 | Academic Computer-Communications Center |
| 29 | Graland Hall (Public and Alumni Affairs) | 64 | Urschel Hall — College of Business Administration |
| 30 | Guild Center of Admissions/Financial Aid | 65 | Smoke Entrance Tower |
| 31 | Kreinherder Hall | P | Parking |
| 32 | Dau Hall | T | Tennis Courts |
| 33 | Dau-Kreinherder Cafeteria | | |
| 34 | Student Affairs Building | | |
| 35 | Miller Hall | | |

