

Otterbein University

Digital Commons @ Otterbein

Library Faculty & Staff Scholarship

Library - Courtright Memorial Library

7-2017

What's in a Name? The faces behind the places of Otterbein University

Stephen D. Grinch Mr

Otterbein University, SGrinch@Otterbein.edu

Follow this and additional works at: https://digitalcommons.otterbein.edu/lib_fac



Part of the [Historic Preservation and Conservation Commons](#), and the [Library and Information Science Commons](#)

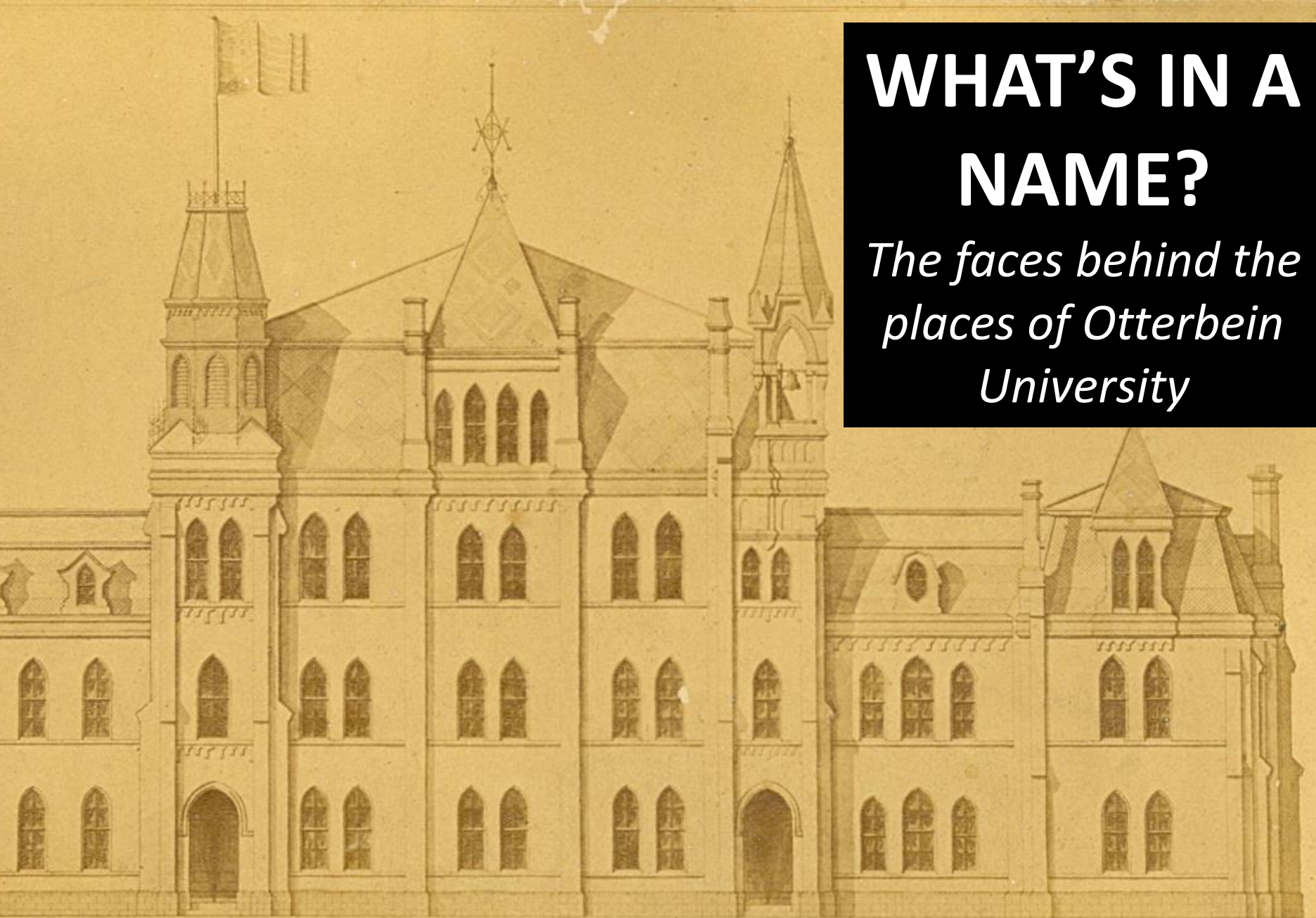
Repository Citation

Grinch, Stephen D. Mr, "What's in a Name? The faces behind the places of Otterbein University" (2017). *Library Faculty & Staff Scholarship*. 11.
https://digitalcommons.otterbein.edu/lib_fac/11

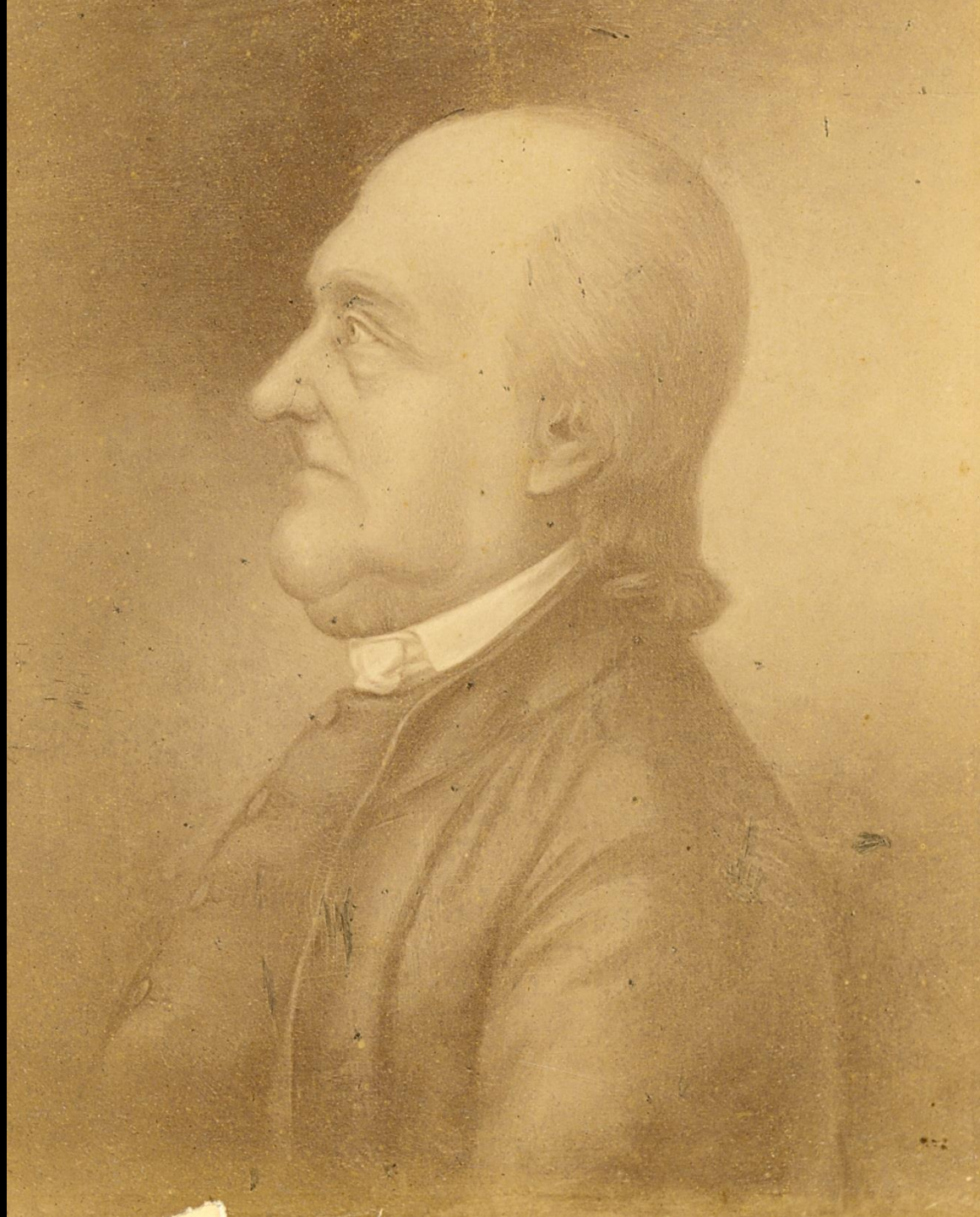
This Presentation is brought to you for free and open access by the Library - Courtright Memorial Library at Digital Commons @ Otterbein. It has been accepted for inclusion in Library Faculty & Staff Scholarship by an authorized administrator of Digital Commons @ Otterbein. For more information, please contact digitalcommons07@otterbein.edu.

WHAT'S IN A NAME?

*The faces behind the
places of Otterbein
University*



Philip William
Otterbein
(1726-1813)



Otterbein's Grave (circa 1920)



Campus (circa 1847)



OTTERBEIN UNIVERSITY, WESTERVILLE

Recitations & Ladies Hall



Saum Hall (1854)

Original Main
Building
(circa 1869)





Association Building (1893)

Dedication
(1871)





Administrative Office (circa 1900)



Towers Hall (circa 1954)

Towers Hall (1997)





Cochran Hall (1907)

*This is "Home Sweet Home" to many of us
A fine dandy place to be;
We live in peace - we never fuss,
We are blithesome, happy and free.*



Lambert Hall (1909)



Clippinger Hall (1908)



Carnegie Library
Circulation Desk
(circa 1944)

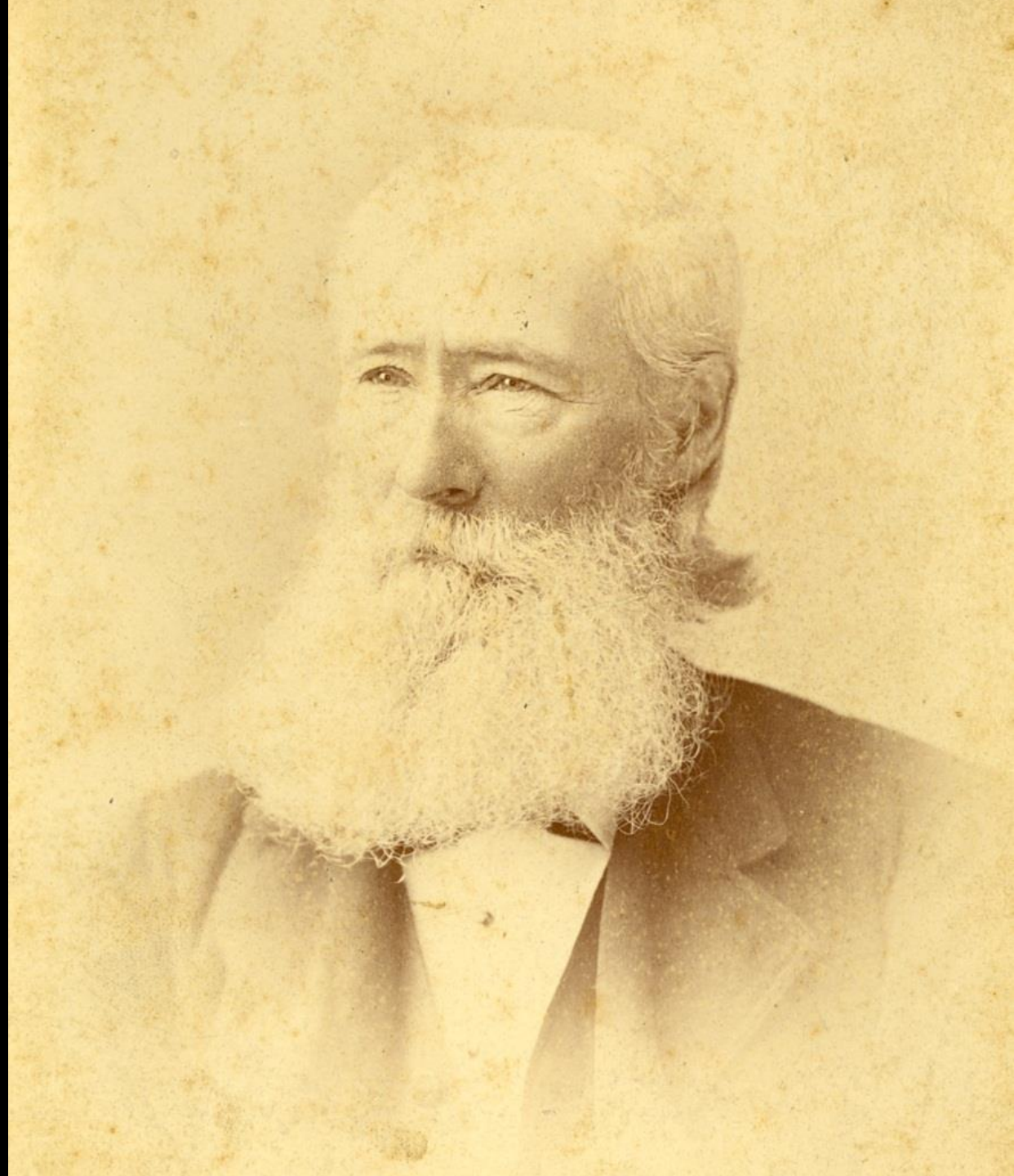
Walter G.
Clippinger –
President,
1909-39

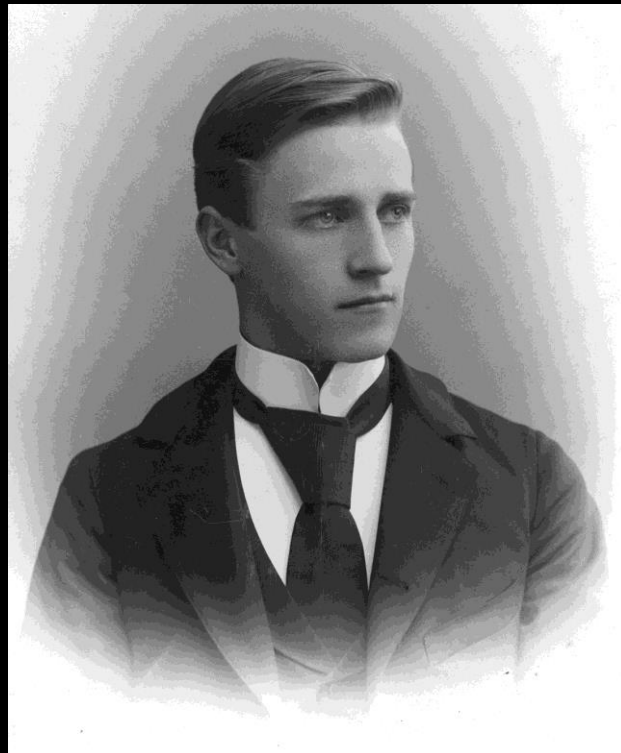




McFadden Hall (1920)

Thomas
McFadden –
Professor,
1858-62
and 1866-84



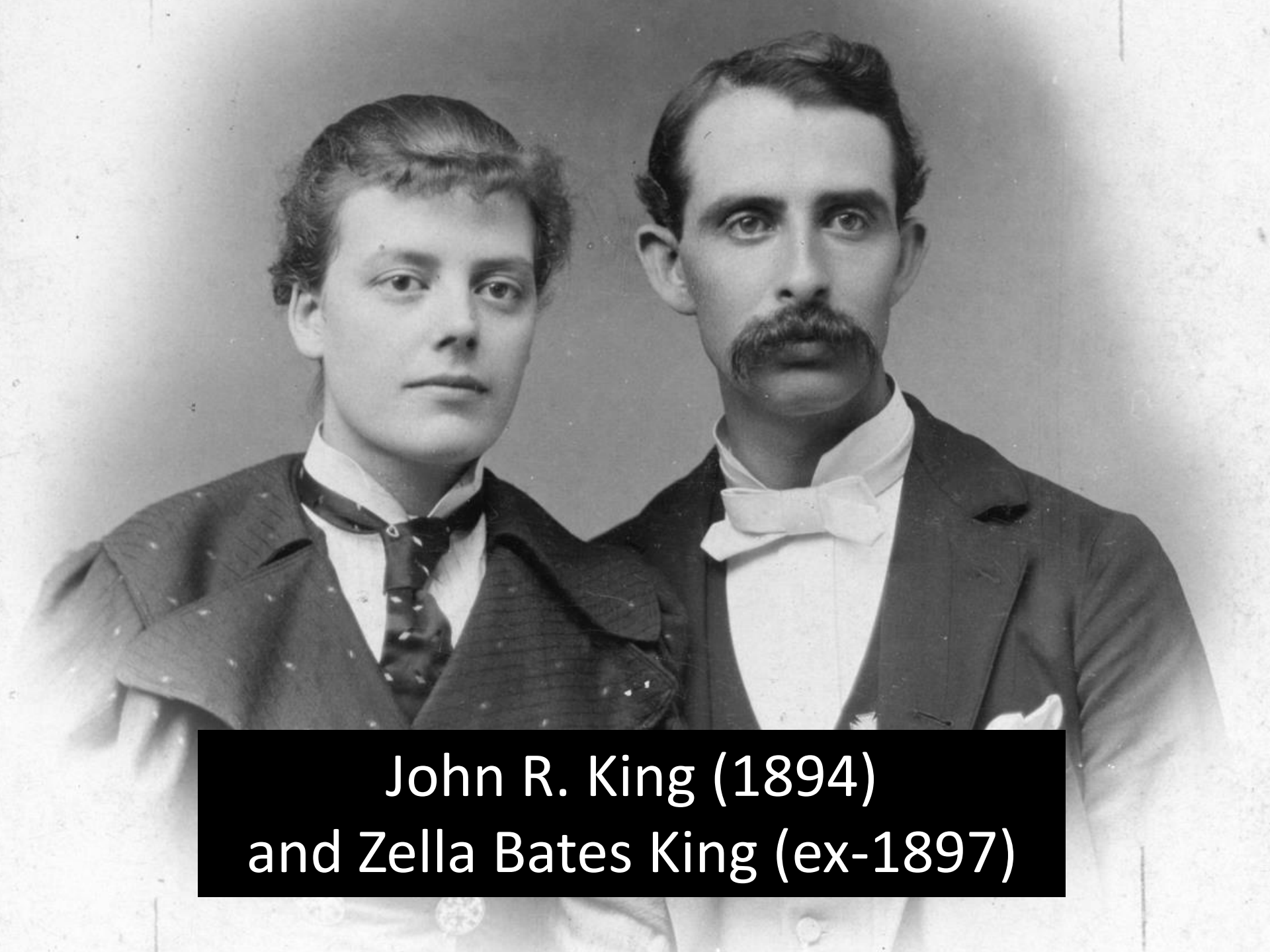


The McFadden Family

L-R, Louis ('74), T. Gilbert ('94) and Cora ('77)



King Hall (1926)



**John R. King (1894)
and Zella Bates King (ex-1897)**



Albert Academy, Sierra Leone

Southampton Pier

April 10, 1912





Dunlap-King Hall
(1988)



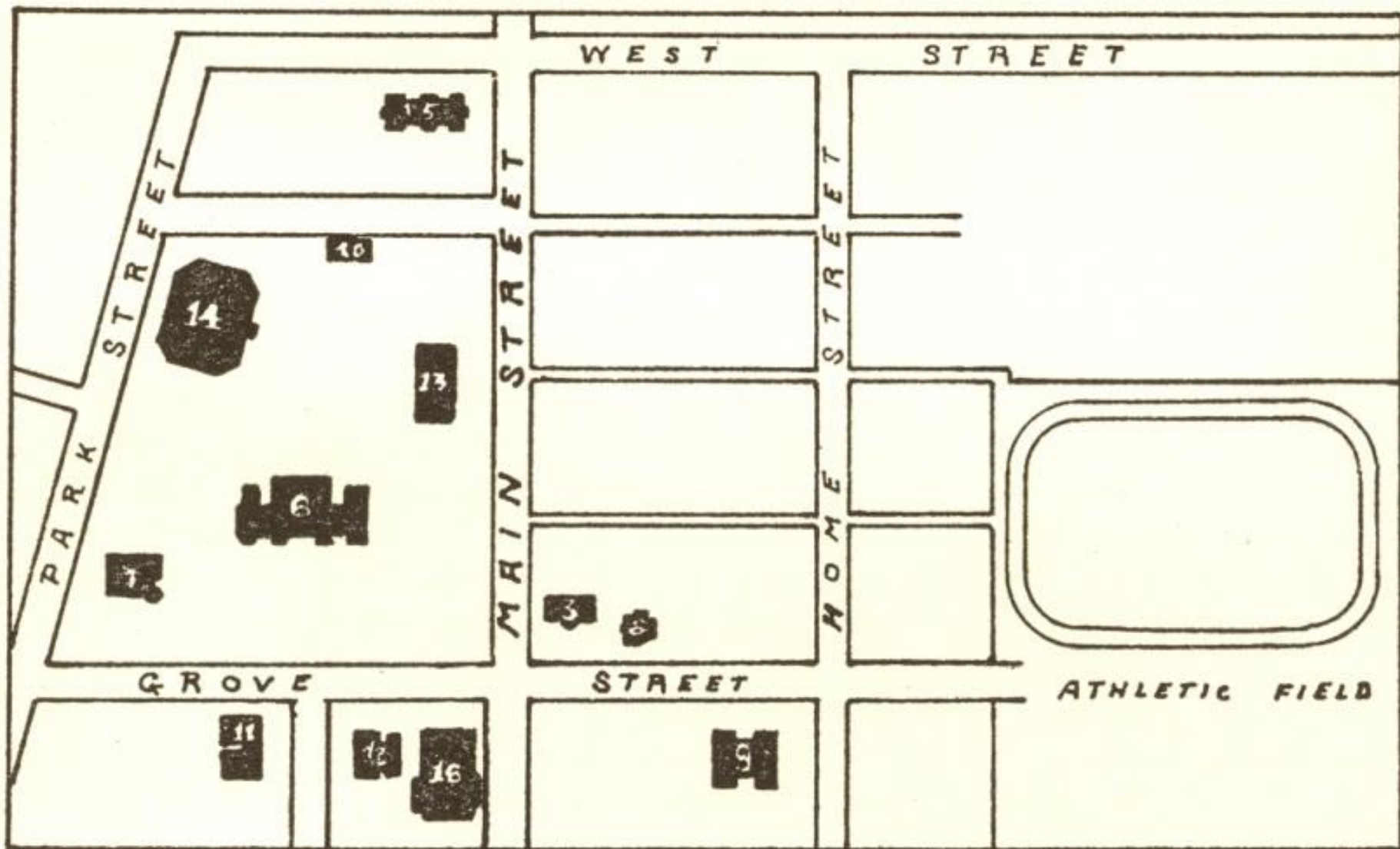
Alumni Gymnasium (1929)



Alumni Gymnasium interior



Battelle Fine Arts Center



CAMPUS

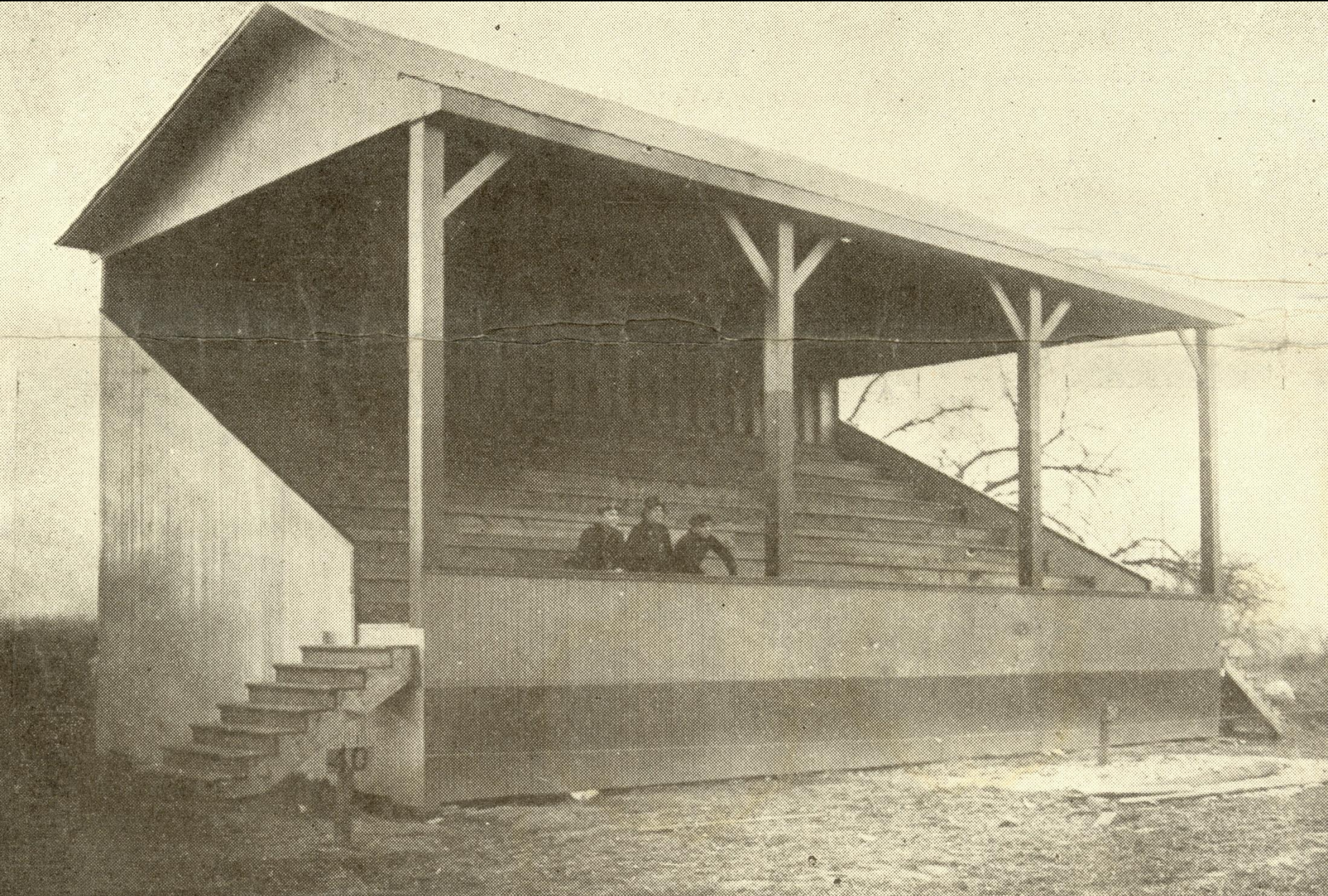
1932



Returning Veterans (September 1945)



Memorial Stadium (1948)



Grandstand (opened Fall 1915)



MEMORIAL STADIUM OTTERBEIN COLLEGE

ERECTED BY ALUMNI AND FRIENDS
AND DEDICATED TO THE MEMORY OF
THE FOURTEEN ALUMNI AND STUDENTS
WHO MADE THE SUPREME SACRIFICE
IN WORLD WAR II

C. DWIGHT ASHCRAFT
GEORGE M. BISHOP
D. JANE BURDGE
RALPH N. CASPER
JAMES R. CHRISMAN
GEORGE C. DAGRES
J. CHARLES HOPPER
DONALD R. JOHNSON
D. RICHARD LE BLANC
GEORGE D. METZGER
EDWARD NAGEL
KENNETH L. PETTIT
KENNETH E. SHOEMAKER
JOHN A. WAGNER, JR.



Memorial Stadium (2005)



Veterans Reunion (September 2005)



Barlow Hall (1948)

Shauk E. Barlow
(ex-class of 1878)



“Barlow Beach”



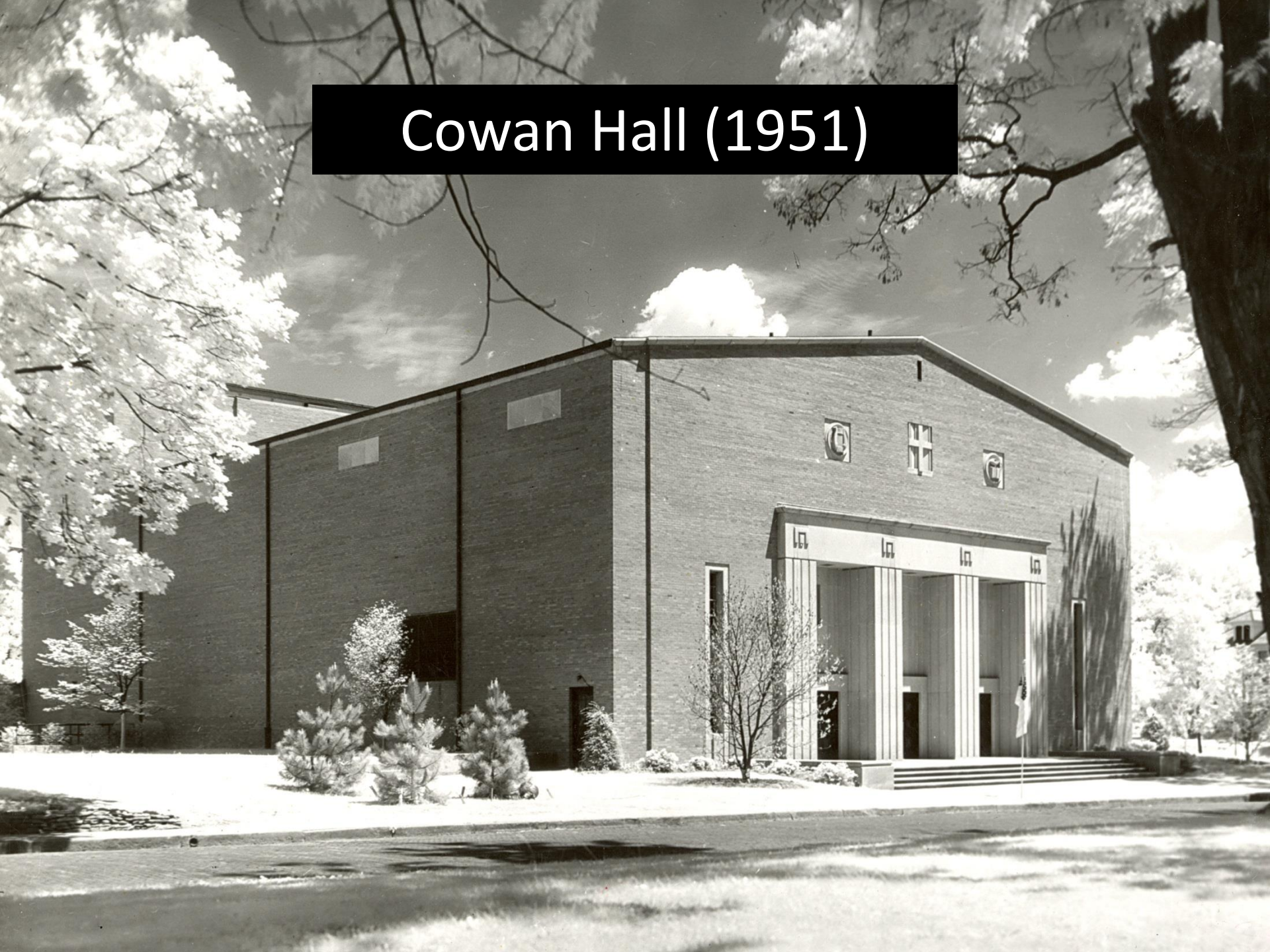
Centennial Library (1954)





Chapel (circa 1900)

Cowan Hall (1951)





Clyde E. Cowan
(class of 1904)

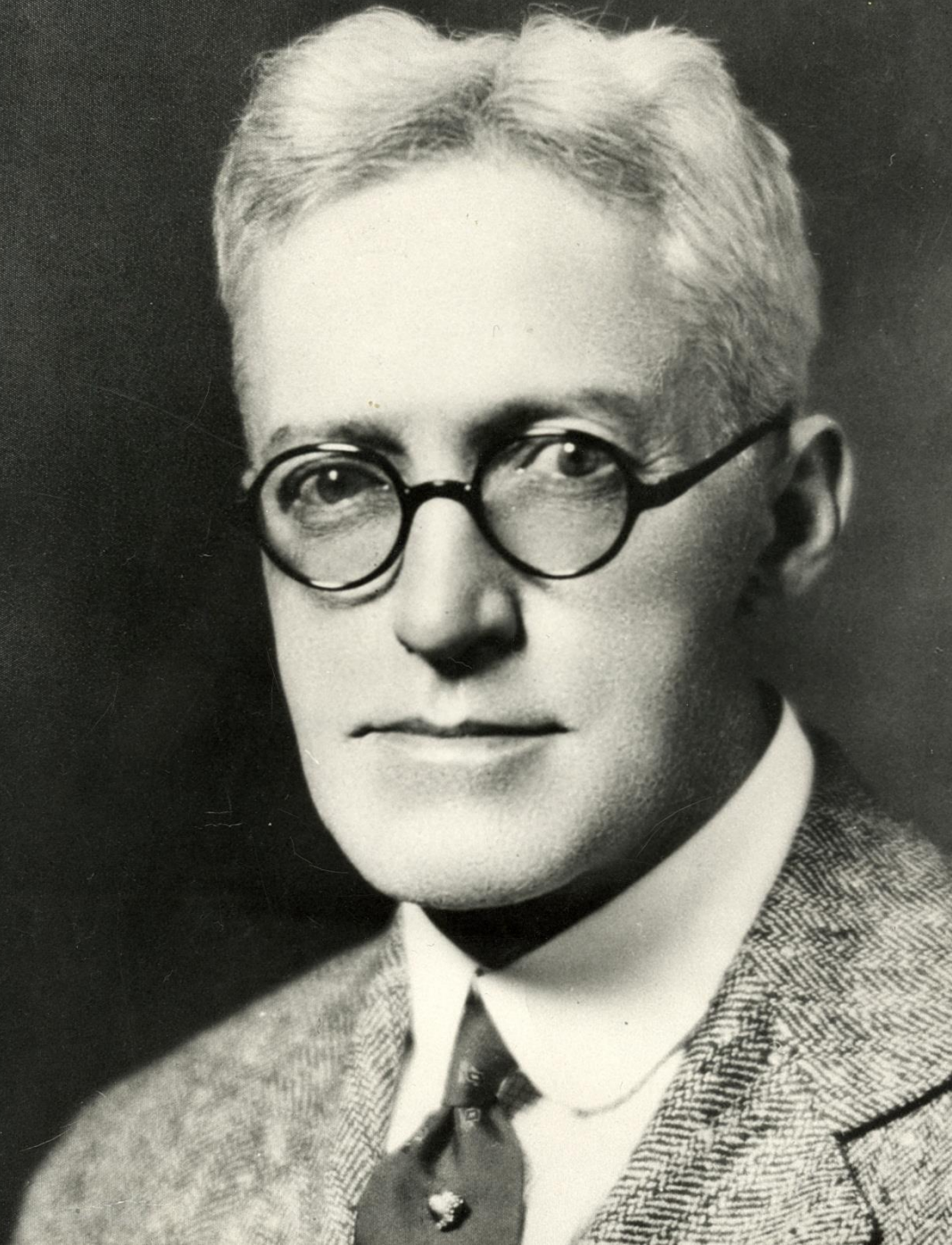


Mailboxes in
Towers Hall
(circa 1955)

Clements Hall (1956)



Frank O.
Clements
(class of 1896)
Board of
Trustees
1918-48





Clements Hall Cornerstone Dedication



Scott Hall (1959)

Sanders Hall (foreground)

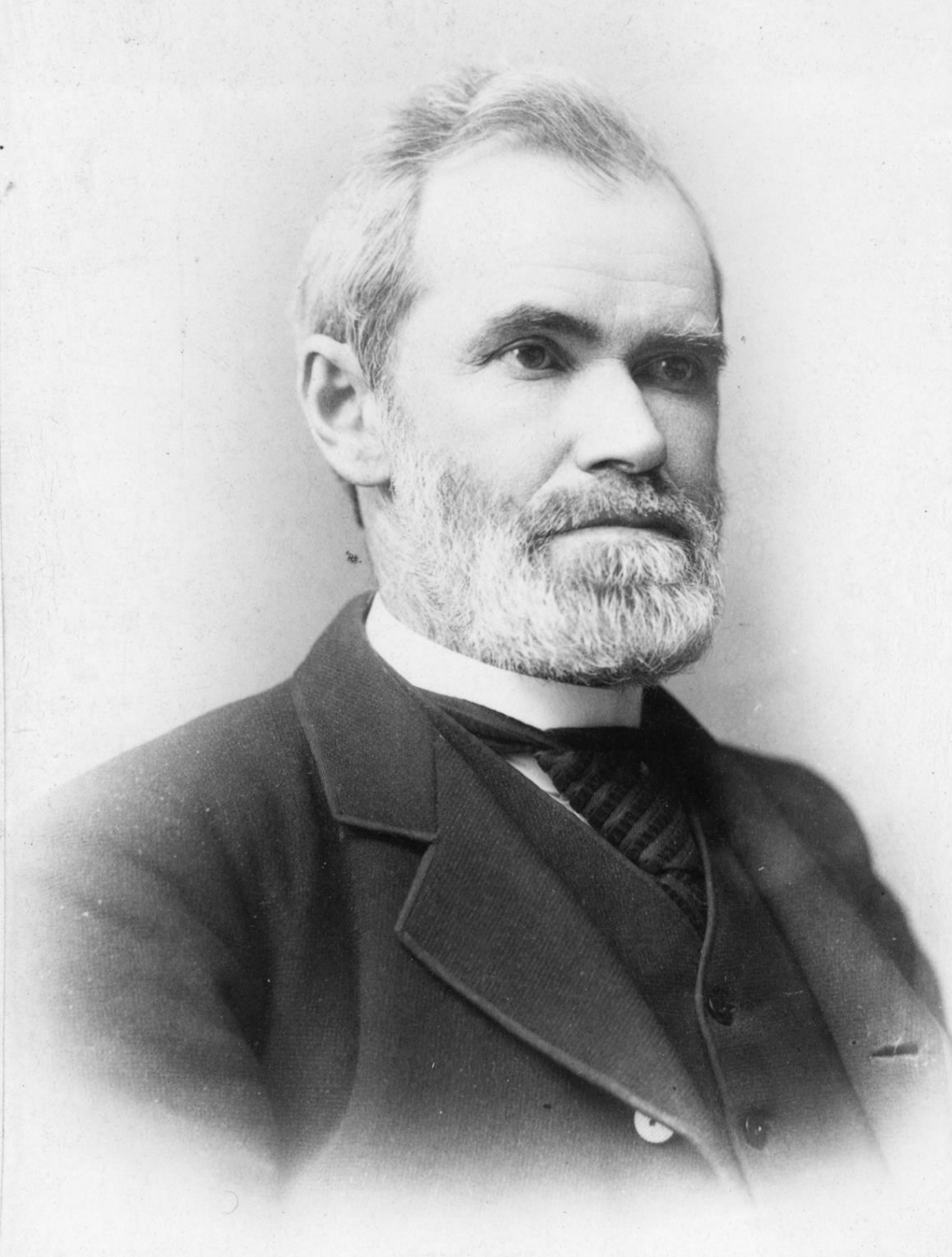


George Scott –
Professor
1888-1938,
President
1901-04



Garst Hall (1960)





Henry Garst -
Professor,
1869-1900
President,
1886-89

Engle Hall (1961)



Jesse Engle
(class of 1914)
Professor,
1924-56



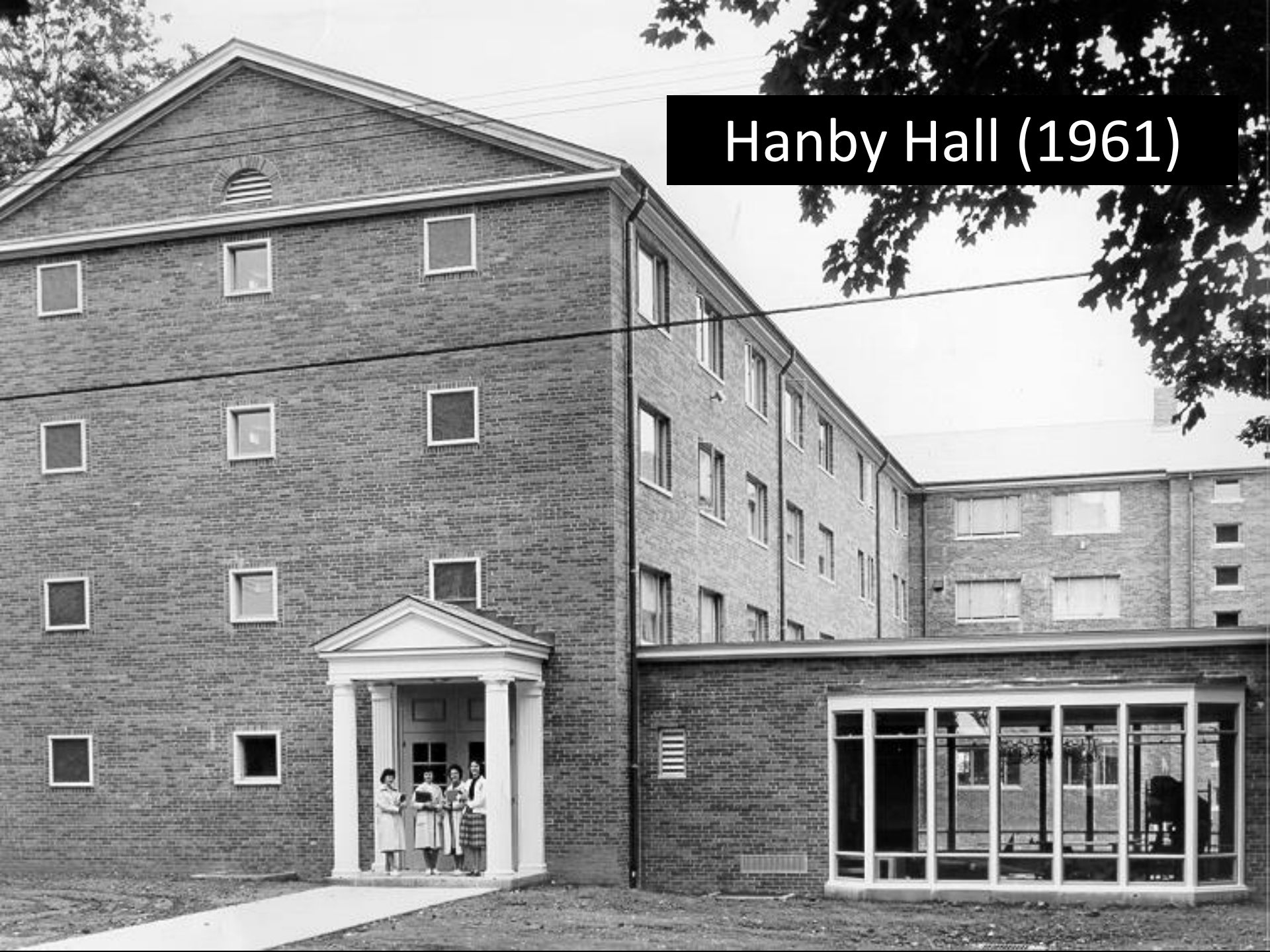
Davis Hall (1961)



Lewis Davis –
Founding
Father and
President of
Otterbein
University,
1850-57 and
1860-71



Hanby Hall (1961)





Benjamin
Russell
Hanby
(class of 1858)



Mary Katherine Winter Hanby (class of 1857)

Kate Winter Hanby
(circa 1924)





Mayne Hall (1964)



Hannah Lambert Mayne
(ex-class of 1890)



Horace Lambert Mayne
(class of 1913)



Davis Annex (1965)



Campus Center (1964)

Schear Hall (1969)



Edward Waldo Emerson
Schear
(class of 1907)
Professor,
1912-51



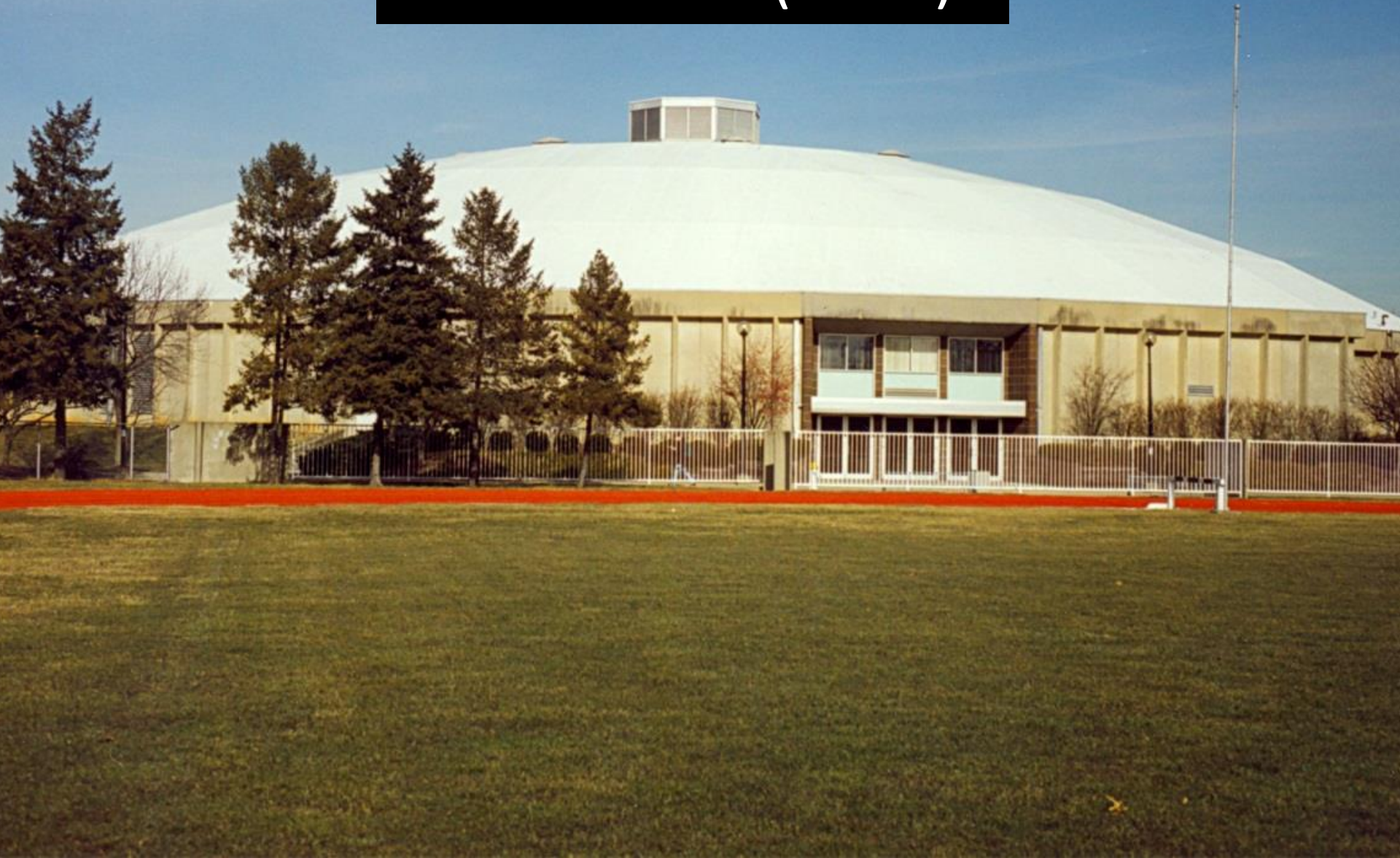


Courtright Memorial Library (1972)

A. Monroe Courtright
(class of 1940)



Rike Center (1975)





Members of the Rike Family with Coach Robert "Moe" Agler and President Thomas J. Kerr IV (1975)



Saum Hall razing (1970)

Cochran Hall razing (1977)



Lambert Hall razing (1980)





Association
Building razing
(1976)



Roush Hall (1993)

OTTERBEIN
C O L L E G E



**SITE OF THE
NEW ACADEMIC
MULTI PURPOSE
BUILDING**

CORNERSTONE
FOR THE FUTURE



**Edwin "Dubbs" (class of 1947)
and Marilou Harold (class of 1945)
Roush**



The Commons on Park Street (1995)

The Commons on Home Street (2001)



Clements Center (2002)





**Art and Communications Building
(opened 2006)**

Collegeview Center (Before STEAM)



STEAM Center (Fall 2016)



DeVore Hall (2006)



C. Brent DeVore –
President,
1984-2009





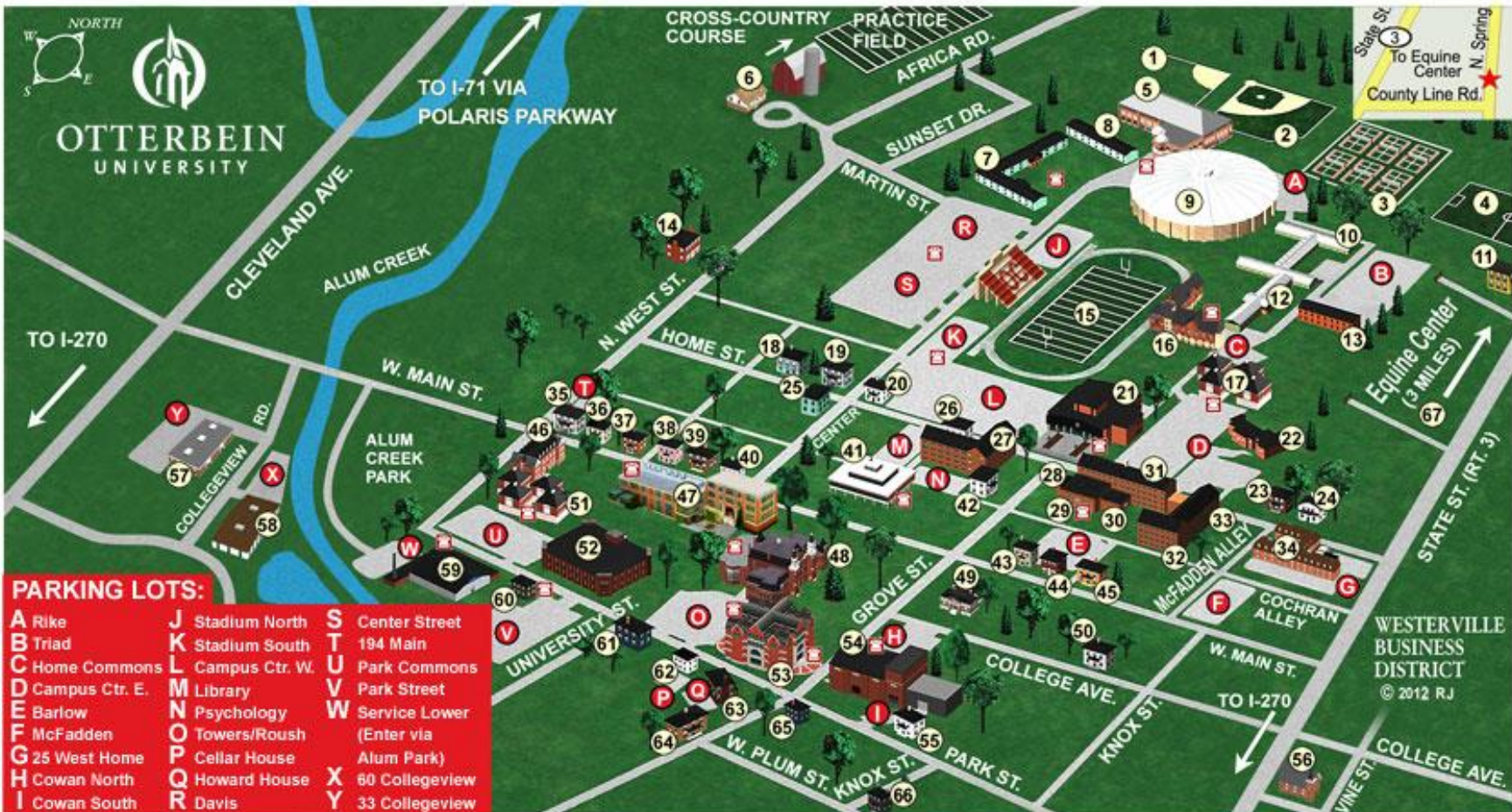
25 West Home Street
(opened 2008)



New Science Center (2009)



Austin E. Knowlton Center for Equine
Science(2009)



PARKING LOTS:

- | | | |
|-------------------------|-------------------------|-----------------------------------|
| A Rike | J Stadium North | S Center Street |
| B Triad | K Stadium South | T 194 Main |
| C Home Commons | L Campus Ctr. W. | U Park Commons |
| D Campus Ctr. E. | M Library | V Park Street |
| E Barlow | N Psychology | W Service Lower (Enter via |
| F McFadden | O Towers/Roush | Alum Park) |
| G 25 West Home | P Cellar House | X 60 Collegeview |
| H Cowan North | Q Howard House | Y 33 Collegeview |
| I Cowan South | R Davis | |

- 57 Art / Communication Depts/ Miller Gallery
- 2 Baseball Field
- 52 Battelle Fine Arts Center
- 34 Business Office
- 21 Campus Center: Bookstore/Dining Hall/ Otterden
- 28 Career Center
- 62 Cellar House/Marketing
- 30 Chapel
- 14 Clements House (President)
- 5 Clements Recreation Center
- 49 Clipping Hall: Admission International Admission
- 44 Community Engagement/ Chaplain's Office
- 41 Courtright Memorial Library/ Otterbean Cafe

- 54 Cowan Hall/Fritsche Theatre
- 67 Equine Center (600 N. Spring Rd.)
- 29 Financial Aid
- 56 Frank Museum (29 S. Vine St.)
- 40 Hanby House (Historical)
- 65 Hancock House/ Alumni Relations
- 22 Health Center
- 63 Howard House: Development / Institutional Advancement
- 34 Human Resources
- 15 Memorial Stadium
- 42 Psychology Dept.
- 9 Rike Physical Education
- 53 Roush Hall: Fisher Gallery/ Roost Express Deli The Graduate School - Room 208
- 35 Otterbein Police (194 W. Main St.)
- 59 Service Dept.
- 47 Shear-McFadden Science Hall

- 4 Soccer Field
- 1 Softball Field
- 32 Student Affairs Office
- 3 Tennis Courts
- 48 Towers Hall: Registrar Office of Adult and Transfer Admission
- 60 Women's Club Thrift Shop
- 58 Collegeview Center
- 38 172 W. Main St. Faculty Offices
- 6 181 N. West St.
- Theme Housing:
 - 24 46 W. Home Street
 - 19 154 W. Home Street
 - 18 162 W. Home Street
 - 20 146 W. Home Street
 - 25 155 W. Home Street
 - 11 211 N. State Street

- Residence Halls:**
- 31 Clements Hall
 - 7 Davis Hall
 - 8 Davis Annex
 - 46 Dunlap-King Hall
 - 13 Engle Hall
 - 10 Garst Hall
 - 33 Hanby Hall
 - 27 Mayne Hall
 - 12 Scott Hall
 - 17 The Commons on Home St.
 - 51 The Commons on Park St.
 - 16 DeVore Hall
 - 34 25 W. Home St. Hall

- Greek Housing:**
- 43 Epsilon Kappa Tau (Sorority)
 - 61 Eta Phi Mu (Fraternity)
 - 45 Kappa Phi Omega (Sorority)
 - 55 Lambda Gamma Epsilon (Fraternity)
 - 66 Pi Beta Sigma (Fraternity)
 - 64 Pi Kappa Phi (Fraternity)
 - 26 Sigma Alpha Tau (Sorority)
 - 36 Sigma Delta Phi (Fraternity)
 - 39 Tau Delta (Sorority)
 - 37 Tau Epsilon Mu (Sorority)
 - 23 Theta Nu (Sorority)
 - 50 Zeta Phi Fraternity

EMERGENCY PHONES

OR CALL OTTERBEIN POLICE AT 614.823.1222