

Upper Aptian calcareous algae from Pădurea Craiului (Northern Apuseni Mountains, Romania)



Ioan I. Bucur¹, Bruno Granier² and Emanoil Sășăran¹

¹ Department of Geology, Center of Geological Integrated Studies, Babeș-Bolyai University, str. M. Kogălniceanu nr.1, 400084 Cluj-Napoca, Romania; (ibucur@bioge.ubbcluj.ro; esasaran@bioge.ubbcluj.ro)

² Département des Sciences de la Terre, UFR des Sciences et Techniques, Université de Bretagne Occidentale (UBO), 6, avenue Le Gorgeu, F-29238 Brest Cedex 3, France; (bgranier@univ-brest.fr)

Geologia Croatica

ABSTRACT

A study of calcareous strata previously assigned to the Barremian-Early Aptian interval in the northwestern part of Pădurea Craiului, (Apuseni Mountains), led to the identification of a micropaleontological association indicative of a Late Aptian age. Unequivocal evidence for the Late Aptian assignment of these limestones is the presence throughout the sequence of two orbitolinid species, Mesorbitolina texana (ROEMER) and Mesorbitolina subconcava (LEYMERIE). The most interesting sections are located in the neighbourhood of Subpiatră, where both outcrops and a quarry facilitated detailed analyses. In this area, the Upper Aptian succession consists basically of three types of macrofacies: 1) limestone with rudists; 2) limestone with Bacinella and 3) limestone with corals, each of them showing several types of microfacies. Bacinella structures are the most common feature in the whole succession, irrespective of the macrofacies. This paper focuses on an algal association that was identified in several levels within the succession. Dasycladalean algae are more frequent, and are commonly found in grain-dominated fabrics (mostly grainstone textures), in association with orbitolinid foraminifera and bioclasts of corals, rudists and gastropods. However, a few species are present only in mud-dominated fabrics (i.e. lower-energy intervals). The dasycladalean association from the Upper Aptian deposits of Pădurea Craiului is of special interest, for this group registered a dramatic decline at the Lower Aptian/Upper Aptian boundary, as confirmed by the relative scarcity of the Dasycladales in the Upper Aptian carbonate deposits.

Keywords: calcareous algae, Upper Aptian, Pădurea Craiului, Apuseni Mountains, Romania

1. INTRODUCTION, STRATIGRAPHIC FRAMEWORK

The Pădurea Craiului Massif includes Mesozoic deposits of Triassic, Jurassic and Cretaceous age. Samples were collected from several profiles in the Subpiatră quarry (near the Aleșd locality, in the northwestern part of the Pădurea Craiului Mountains (Fig. 1) and were assigned into the local Cretaceous succession. The lowermost Cretaceous strata lie unconformably on a surface deformed by regional uplift at the end of the Upper Jurassic. The sequence begins with bauxites that are overlain by carbonate deposits assigned to discrete lithostratigraphic units, from bottom to top as follows (Fig. 2):

- 1) **Blid Formation** (DRAGASTAN et al., 1986, 1988). This formation includes two members (COCIUBA, 2000):
 1. a) The Dobrești Member overlies bauxites or rests directly on Upper Jurassic limestone. Originally, the basal limestone of the Dobrești Member contains lacustrine deposits, which are followed by brackish and finally by normal marine strata; in the literature they are known as “Limestone with characeans and gastropods” (PATRULIUS in IANOVICI et al., 1976). Besides characeans and gastropods, this limestone contains dasycladalean algae and foraminifera, an assemblage

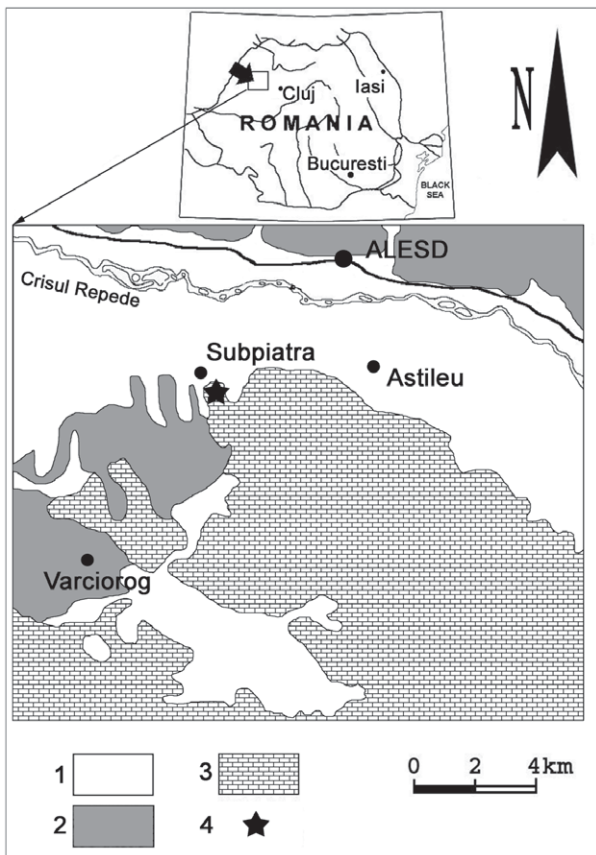


Figure 1: Location of the study area. 1 Quaternary deposits; 2 Cenozoic deposits; 3 Mesozoic deposits; 4 Location of the studied section (Subpiatră Quarry).

with a low value regarding its stratigraphic resolution that however indicates a Berriasian–Hauterivian range.

1. b) The Coposeni Member, previously known as the “Lower pachyodont limestone” (PATRULIUS in IANOVICI et al., 1976), is Upper Hauterivian–Barremian in age. The foraminiferal association identified in the lower-middle part of this limestone contains *Paracoskionina? jourdanensis* (FOURY & MOULLADE), an index foraminifer for the Upper Hauterivian p.p. and Lower Barremian.
- 2) **Ecleja Formation** (PATRULIUS, in IANOVICI et al., 1976), a succession of greyish silty marls to marly silts. It includes two members that differ in lithology from the marly succession (COCIUBA, 2000):
 2. a) The Gugu Breccia Member (PATRULIUS et al., 1982) and
 2. b) The Valea Bobdei Limestone Member (COCIUBA, 2000). The Valea Bobdei limestone was known previously as “The middle pachyodont limestone”. Most probably, its age is basal Early Aptian (early Bedoulian).
- 3) The **Valea Măgurii Limestone Formation** (COCIUBA, 2000) rests on the Ecleja Marls and its upper limit is the site of an unconformity. This formation is also of Early Ap-

lian age (most probably late Bedoulian). Both the Valea Bobdei Limestone and the Valea Măgurii Limestone include the orbitolinid *Palorbitolina lenticularis* (BLUMENBACH), a fossil that ranges from the Late Barremian to the Early Aptian.

- 4) The **Vârciorog Formation** (COCIUBA, 2000) is the new designation for the previously defined “Formation of the glauconitic sandstones and the upper pachyodont limestones” (PATRULIUS in IANOVICI et al., 1976). In the Varciorog area, the limestone interbeds are 15–20 m thick and contain *Mesorbitolina texana*. The Vârciorog Formation was assigned to the Upper Aptian (Gargasian) – Albian interval. The limestone of the Subpiatră quarry belongs to this same formation. A section in the southern part of the study area was the object of a preliminary investigation (DAOUD et al., 2004).

2. CARBONATE FACIES AND AGE OF THE VÂRCIOROG FORMATION LIMESTONE

Macroscopically, three major facies could be identified: biostromes with rudists, limestone with *Bacinella* nodules and coral bioconstructions with their associated unique facies (Fig. 3). Their study under the microscope showed several types of microfacies all characterized by an abundance of *Bacinella*, (its occurrence is most conspicuous in a bindstone with *Bacinella*, and in a bioclastic wackestone-packstone with *Bacinella* oncoids), followed by somewhat lesser quantities in wackestone-packstone and coarse bioclastic grainstone, packstone and boundstone with rudists, coral boundstone and peloidal-bioclastic wackestone-packstone (Pl. 1, Figs. 1–7). *Bacinella* is the main component in all of these microfacies; it represents more than 30 % of the total volume.

The micropalaeontological associations in the whole succession include both foraminifera and algae. The following have been identified: *Sabaudia minuta* (HOFKER), *Sabaudia auruncensis* CHIOCCHINI & DI NAPOLI ALIATA, *Glomospira urgoniana* ARNAUD-VANNEAU, *Troglotella incrustans* WERNLI & FOOKES, *Mesorbitolina texana* (ROEMER) (Pl. 2, Fig. 1), *Mesorbitolina subconca* (LEYMERIE) (Pl. 2 fig. 2), *Pseudolituonella conica* LUPERTO SINNI & MASSE, *Girariarella? prismatica* ARNAUD-VANNEAU. The two species of *Mesorbitolina* (*M. texana* and *M. subconca*) in this association have a particular significance for their range does not extend downward to the Gargasian (middle Aptian). Limestone beds of the same age, which were previously assigned to the so-called “Upper pachyodont limestone”, are also known at Varciorog where they are included in the Vârciorog Formation. At this location, these beds are interbedded with coarse siliciclastics. They do not exceed 15–20 m in thickness and show clear evidence of gravitational flow. In the Subpiatră quarry, the age equivalent limestone beds are 120–150 m-thick and are typical carbonate platform deposits. Presumably, the carbonate succession in the Subpiatră quarry area represents the Upper Aptian carbonate platform that provided the gravitational flows found in the Vârciorog area where terrigenous deposits with a “flysch-like” character predominate.

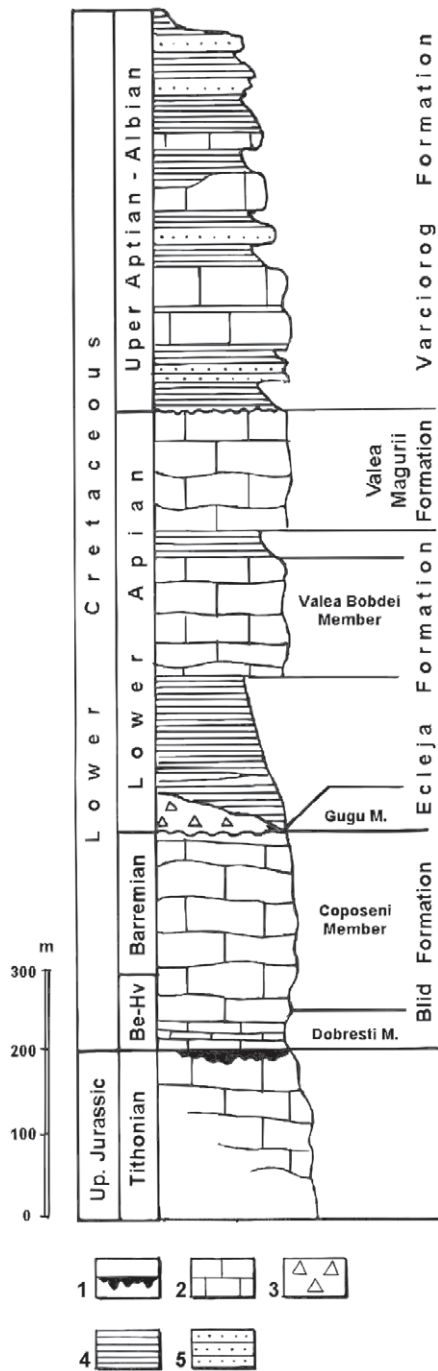


Figure 2: Lower Cretaceous lithostratigraphic units from the Pădurea Craiului Mountains. 1 Bauxite; 2 Limestone; 3 Breccia; 4 Marl and shale; 5 Sandstone

3. THE CALCAREOUS ALGAE

An algal association was identified at several levels in the succession. It is dominated by dasycladalean algae and it consists of: *Anisoporella? cretacea* (DRAGASTAN), *Cylindroporella ivanovici* (SOKAČ), *?Clypeina* sp., *Dissocladella* sp., *Neomeris* sp., *Russoella* sp., *Salpingoporella* sp., *Terquemella* sp., *Triploporella* sp., *Zittelina* sp. and the microproblematicum *Coptocampylodon fontis* PATRULIUS. It includes other algal groups represented by *Polystrata alba* PFENDER, *Paracharetetes asvapatii* (PIA) and rivulariacean-type cyanobacteria.

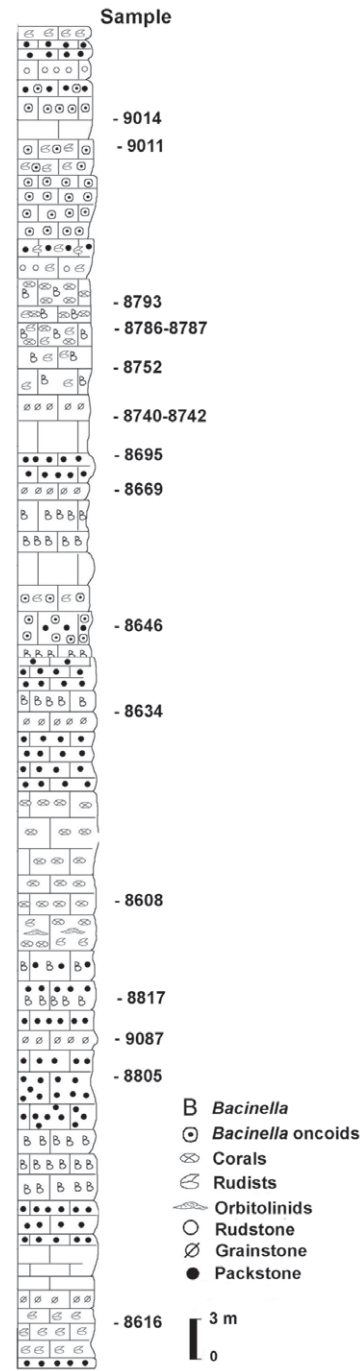


Figure 3: Succession and facies characteristics of the Upper Aptian limestones from the Subpiatră Quarry, with the location of algae-bearing samples

Anisoporella? cretacea (DRAGASTAN, 1967) (Pl. 3, Fig. 7)

This alga was originally described from the Pădurea Craiului area (Apuseni Mountains) as *Pseudoepimastopora cretacea* (DRAGASTAN, 1967). Following its emendation to the genus *Pseudoepimastopora* (ROUX, 1979) and its subsequent invalidation (GRANIER & DELOFFRE, 1993), the alga was assigned to two other genera: *Epimastoporella* ROUX 1979 (BUCUR, 1992) and *Anisoporella* BOTTERON 1961 (BUCUR, 1995) (see BUCUR, 2000 for a detailed discussion of

PLATE 1

- 1** Bioclastic-intraclastic rudstone with large coral fragments, rudist, bivalve, gastropod and echinid fragments, and foraminifera; 8608.
- 2** Coarse bioclastic packstone with gastropods and dasycladales; 9087.
- 3-4** Subtidal limestones formed in a high hydrodynamic environment and subsequently subaerially exposed. Stalactitic-type cement (fig. 3, arrows) and meniscus-type cement (fig. 4) indicating vadose diagenesis. The intergranular voids are filled with ostracod- and small gastropod-bearing ooze, and microbialite. Fig. **3**, 8869; Fig. **4**, 8865.
- 5** Limestone with *Bacinella*; 8817.
- 6** Coral bioconstructions, 8646.
- 7** Vertical succession of facies of different grain-size within peritidal deposits. The subtidal deposits formed in a high energy environment (lower part) are intercalated with subtidal deposits formed in a low-energy environment (upper part); 8793.

Scale bar is 1 mm for all figures.

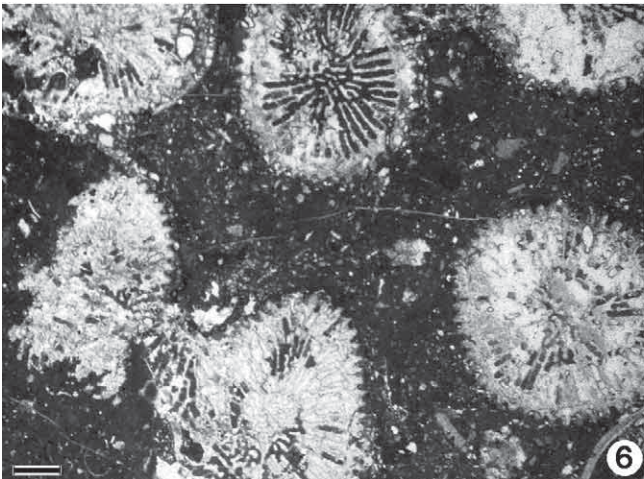
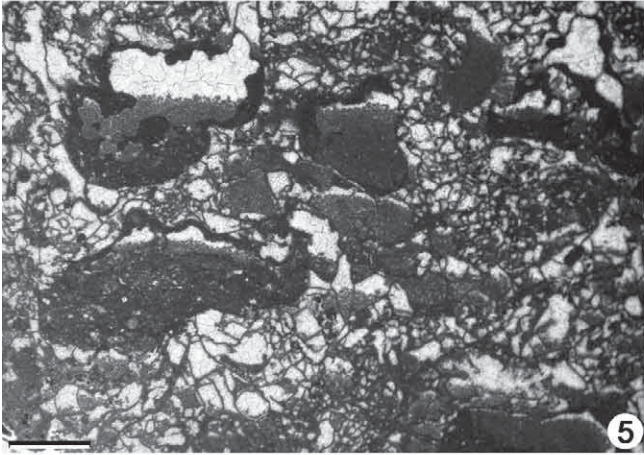
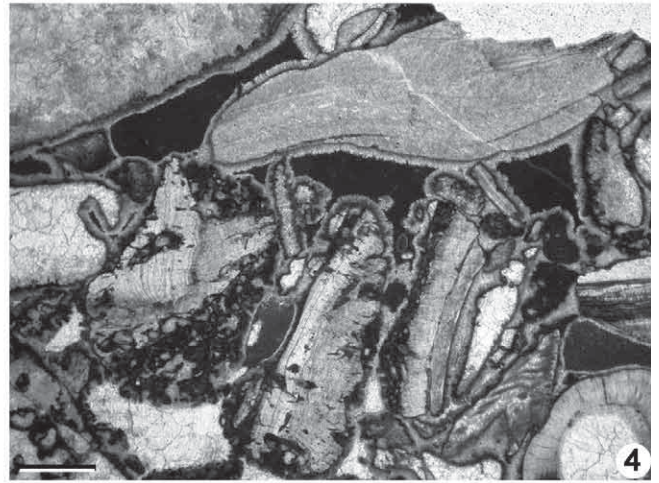
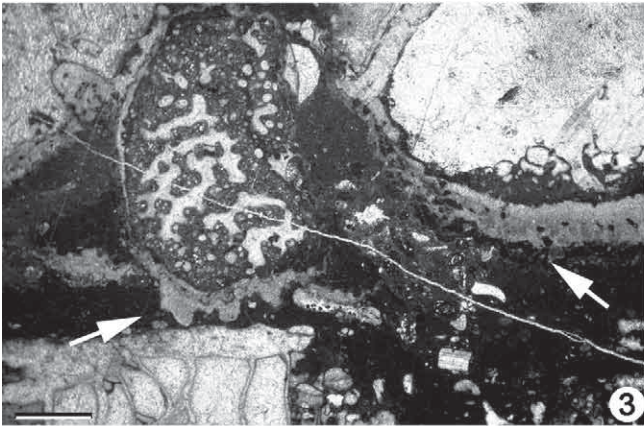
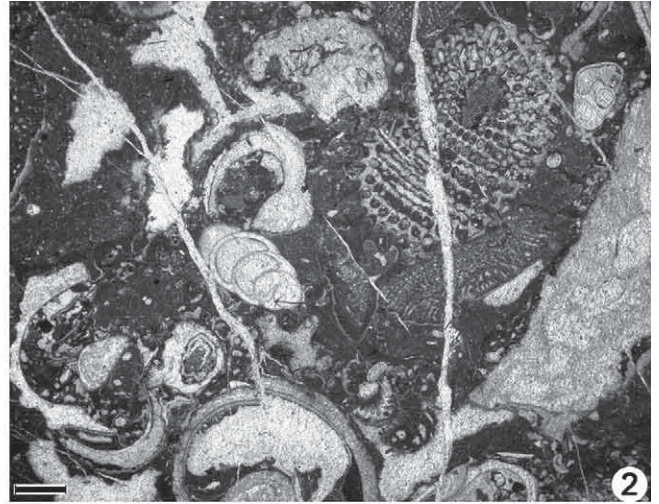
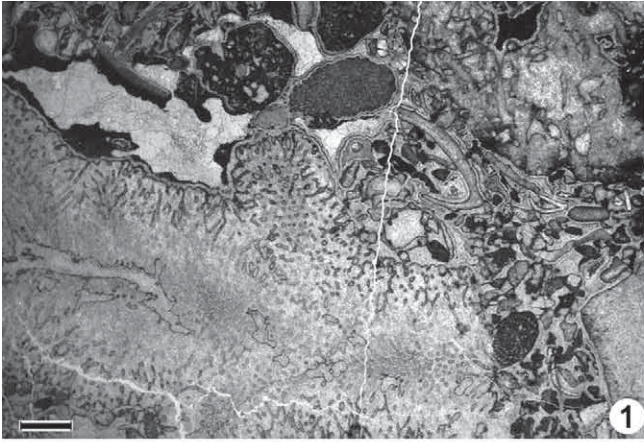


PLATE 2

- 1** *Mesorbitolina texana* (RÖMER); 8634.
 - 2** *Mesorbitolina subconcava* (LEYMERIE); 8805.
 - 3** *Coptocampylodon fontis* PATRULIUS and *Terquemella* sp.; 9011.
 - 4** *Polystrata alba* (PFENDER); 8669.
 - 5–6** Rivulariacean-type cyanobacteria. Fig. **5**, 9014; Fig. **6**, 8695
 - 7** *Parachaetetes asvapatii* PIA; 8069.
 - 8** *Terquemella* sp.; 8616.
- Scale bar is: 0.125 mm (Fig. 4); 0.25 mm (Figs. 1 and 2); 0.5 mm (Figs. 3, 5–8)

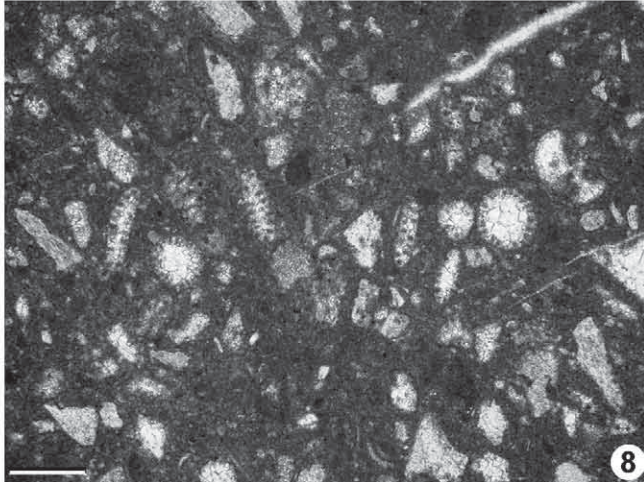
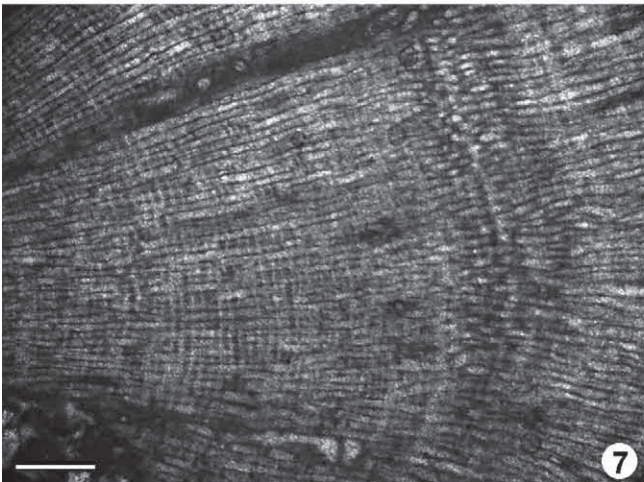
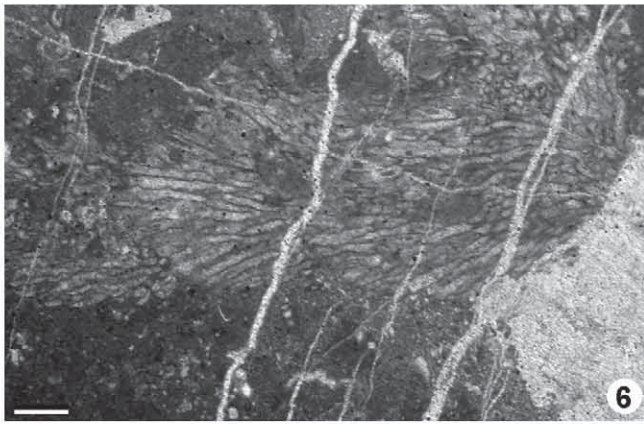
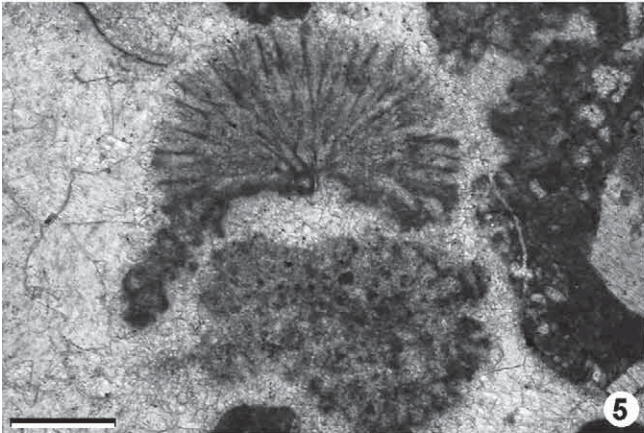
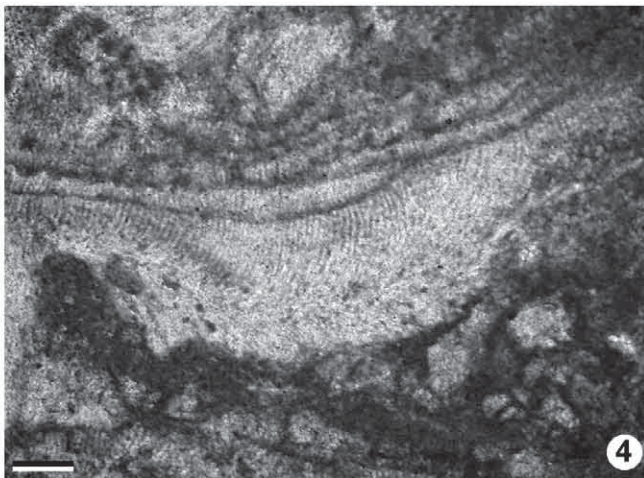
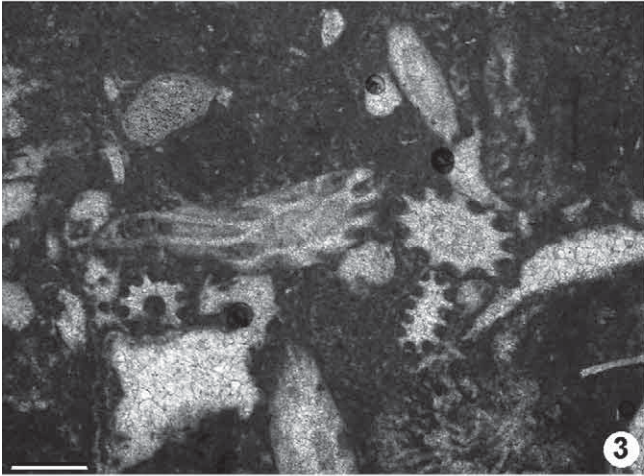
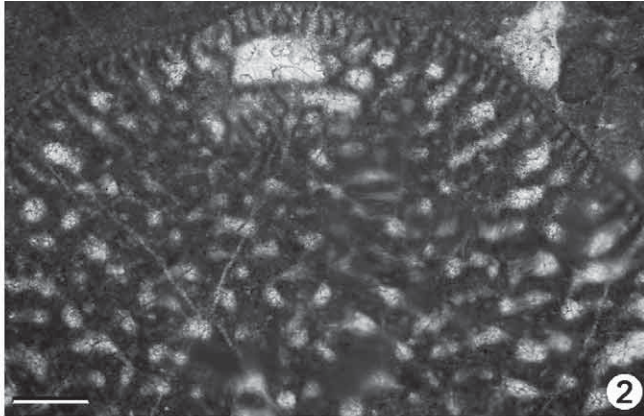
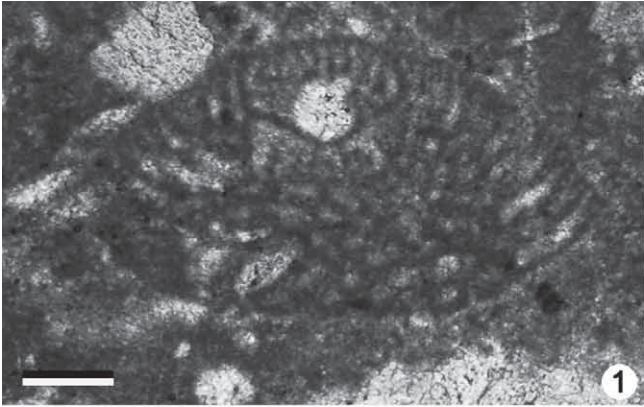


PLATE 3

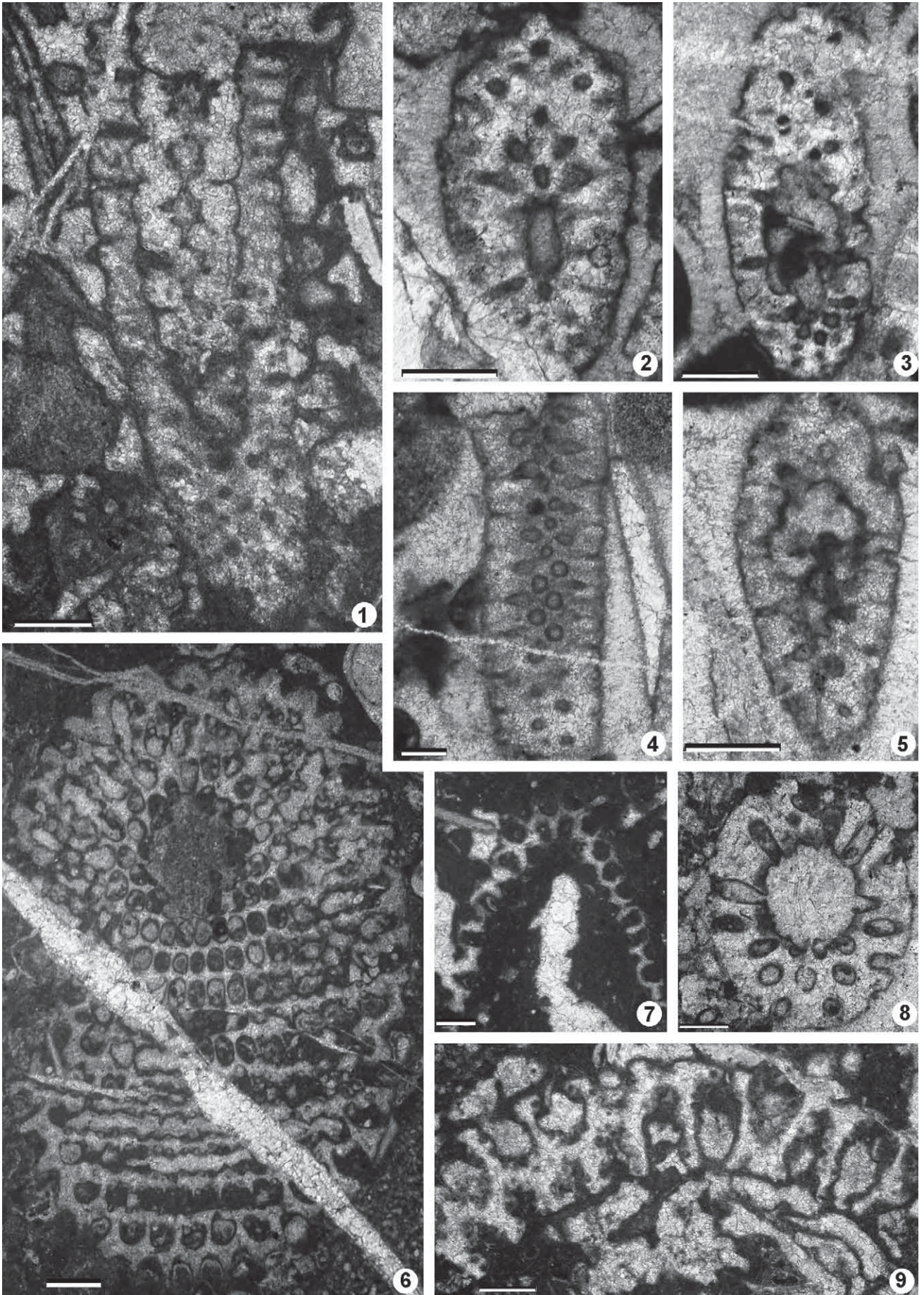
1–5 *Cylindroporella ivanovici* (SOKAČ). Fig. **1**, 8742; Figs. **2, 3, 5**, 8687; Fig. **4**, 8686.

6, 9 *Zittelina* sp. Fig. **6**, 9087; Fig. **9**, 8742.

7 *Anisoporella? cretacea* (DRAGASTAN), 8752.

8 *Triloporella* sp.; 8740.

Scale bar is: 0.25 mm (Fig. 4); 0.5 mm (Figs. 1–3, 5–9).



synonymies and generic assignment). In fact as shown by RADOIČIĆ (2005), the affiliation of the species *A.? cretacea* to the genus *Anisoporella* was incorrect, *Anisoporella*-type algae have vesiculiform laterals in a euspondyl arrangement, but with double verticils (a feature not present in *A.? cretacea*, which has simple euspondyl verticils). As noted by BUCUR *et al.* (2005), the morphological features of the skeleton of this alga are closer to those of the genus *Griphoporella* as described and emended by BARATTOLO *et al.* (1993). Most probably, *Epimastopora cekici* RADOIČIĆ (Upper Hauterivian – Lower Barremian) and *Gyroporella lukicae* SOKAČ & VELIĆ (Lower Aptian) are ascribable to the same genus. The clarification of the systematic status of *Anisoporella? cretacea* is in progress, based on new finds in the Jurassic and Lower Cretaceous deposits of the Alps and the Carpathians (BUCUR & SCHLAGINTWEIT, in prep.).

Generalised stratigraphic range: Oxfordian–Aptian.

***Cylindroporella ivanovici* (SOKAČ, 1987)**

(Pl. 3, Figs. 1–5)

This dasycladalean alga is the most common species in our samples. Here too, the systematic assignment has undergone several changes. It was originally described as a species of the genus *Korkyrella* SOKAČ & VELIĆ, 1981 (SOKAČ, 1987), which was subsequently invalidated because the type species, originally named *Salpingoporella texana*, was considered to be invalid. The species *K. ivanovici* has also been considered a junior synonym of the species *Pseudoepimastopora pedunculata* JAFFREZO *et al.*, 1980 (in the new combination *Cylindroporella pedunculata*, see LUPERTO SINNI & MASSE, 1993; BODROGI *et al.*, 1994; BUCUR, 2000; SOTAK & MIŠIK, 1993) or it has been transferred to the genus *Cylindroporella* (*C. ivanovici*) (see MANCINELLI, 1992; MASSE & ISINTEK, 2000). SOKAČ (2004) has revised the genus *Korkyrella* by designating a lectotype for *Salpingoporella texana* JOHNSON, 1965 and has redefined the species *Korkyrella texana* (a taxonomic procedure that may cause a homonymy thus leading to another invalidation of the genus *Korkyrella*). The relationship between *Cylindroporella ivanovici* and *Cylindroporella barnesii* JOHNSON (1954), has been discussed by BUCUR (2000), who shows that often the two species have been distinguished on the basis of “stratigraphic” criteria and may represent, in fact, a single species (see also CONRAD, 1982). But to confirm this, a careful review of the type species would be required. *Griphoporella aurigerica* CONRAD & PEYBERNES (1976) may be another synonym of this species.

Generalised stratigraphic range: Hauterivian–Albian

***Terquemella* sp.**

(Pl. 2, Figs. 3pars, 8)

A number of small objects in association with fossil algae have been described in the palaeoalgal literature and named either *Acicularia*, or *Terquemella*, both considered as the reproductive bodies (gametophores) of some dasycladales in deposits of Late Jurassic – Early Cretaceous age (e.g. *Terquemella antiqua*, PIA, 1936; *Acicularia elongata*, CAROZZI, 1947; *Acicularia jurassica*, JOHNSON, 1961; *Acicula-*

ria americana, KONISHI & EPIS, 1962; *Acicularia endoi*, PRATURLON, 1964; *Acicularia intermedia*, DRAGASTAN, 1967; *Terquemella concava*, BERNIER, 1979). As a rule, the assignment of these objects to either one of the two organogenera was based on ambiguous or subjective criteria. Most of them have been assigned to the genus *Acicularia*. However, some have been reconsidered and assigned to the genus *Terquemella* (e.g. *T. endoi* and *T. antiqua*, see MASSE, 1995; MASSE & ARNAUD-VANNEAU, 1999). Here again a complete review is needed to clarify the taxonomy of the group. In our opinion, there is a simple and efficient morphological criterion that may be used to differentiate the two genera: the presence of “club-shaped” longitudinal sections clearly links the gametophores’ construction to the reproductive disk of *Acicularia* (e.g. *Acicularia* sp., KUSS & HERBIG, 1993). If the shape is spheroidal, ovoidal or discoid an affiliation with the genus *Terquemella* is much more probable. This distinction is obvious when a large number of specimens are found in one sample (fossil assemblage), as is the case of the Upper Aptian limestone samples from Pădurea Craiului: they show discoid morphologies. The specimens illustrated in Pl. 2, fig. 8 represent, most probably, a new species.

***Zittelina* sp.**

(Pl. 3, Figs. 6, 9)

The genus *Zittelina* is represented in Lower Cretaceous deposits by only one species (*Zittelina hispanica* MASSE *et al.*, 1993) that was identified first in the Hauterivian of Spain and then recorded in the Barremian–Aptian deposits of the Reșița Zone (Southern Carpathians, Romania, cf. BUCUR, 2001). However, the specimens identified in the Upper Aptian of the Pădurea Craiului area differ from *Zittelina hispanica* in several morphological and dimensional parameters, so they may be a separate new species. Similar specimens have been illustrated by CAMOIN (1982, pl. 1, figs. 2–3) under the name *Triploporella* cf. *decastroi* and *Triploporella* cf. *matesina* from Barremian–Aptian deposits in Sicily. MASSE & ARNAUD-VANNEAU (1995) have also illustrated *Zittelina* sp. from Albian deposits on a “guyot” of the northwestern Pacific Ocean. These authors consider their specimen to be a new species. It is similar to the form we described from Pădurea Craiului. The study of this alga is in progress based on additional material recently collected from the Subpiatră quarry (Pădurea Craiului).

We have identified several other dasycladalean algae from single specimens or from a limited numbers of specimens, so these sparsely represented forms have been assigned only at the generic level (?*Chypeina* sp., *Dissocladella* sp., *Neomeris* sp. – most probably a fragment of *Neomeris cretacea*, *Russoella* sp., *Salpingoporella* sp., *Triploporella* sp. – Pl. 3, Fig. 8).

***Coptocampylodon fontis* (PATRULIUS, 1966)**

(Pl. 2, Fig. 3pars)

This *incertae sedis* microfossil is very common in the Barremian–Aptian deposits of the Tethyan domain. The clarification of its taxonomy is beyond the scope of this paper. It would require a complex investigation that could clarify the status of

the genus *Coptocampylodon* and the possible affiliation of the species *C. fontis* to this genus or to *Carpathoporella* DRAGASTAN 1967. The most recent papers diverge in their points of view on this subject (e.g. MASSE & ARNAUD VANNEAU, 1999; RADOIČIĆ, 2005). Remarks on the taxonomy and detailed synonymy of *Coptocampylodon* are given in SCHLAG-INTWEIT et al. (2002). Beyond this aspect, it is notable that in the Pădurea Craiului area *C. fontis* is abundant in the Aptian-Albian allodapic limestones that are interbeds in the Vârciorog Formation.

The association identified in the Upper Aptian limestones of Pădurea Craiului includes two red algae: *Polystrata alba* (PFENDER) and *Parachaetetes asvapatii* PIA. *Polystrata alba* (Pl. 2, Fig. 4) is a peyssonneliacean alga occurring frequently in reef or para-reef deposits within the Hauterivian-Oligocene (?Miocene) time interval. Recent articles on this alga are by BASSI (1997) and AGUIRRE & BRAGA (1999). *Parachaetetes asvapatii* (Pl. 2, Fig. 7) is usually assigned to the solenoporaceans, and as a rule it has been found in Upper Cretaceous – Palaeocene deposits, but it was identified in Lower Cretaceous strata (GRANIER et al., 1991), and probably, also in the Upper Jurassic (BUCUR et al., 2005). Recent papers on *Parachaetetes asvapatii* were published by STOKAR (2000) and AGUIRRE & BARATTOLO (2001); the latter's article questioned the affiliation of this alga to the solenoporaceans. *Elianella elegans* PFENDER & BASSE 1948 has been considered by several authors as a recent synonym of *Parachaetetes asvapatii* (e.g. MOUSSAVIAN, 1989). Recently, BUČEK & KÖLER (2005), based on material from the Slovakian Palaeocene, reconsidered this synonymy, favouring the preservation of two separate species.

Finally, concerning the rivulariacean-type cyanobacteria (Pl. 2, Figs. 5–6) we can state only that they are present in some shallow subtidal or intertidal facies

Concerning the palaeoenvironment of the Upper Aptian algae in the Pădurea Craiului area, the dasycladalean algae have been found mainly in coarse-grained facies that include fragments of corals, rudists and gastropods. Only *Terquemella* sp. is present in facies representing low energy environments. However, *Polystrata alba* and *Parachaetetes asvapatii* occur in reef facies, the first as crusts associated with *Bacinel-la*, rudists or corals; the second is more common in environments dominated by corals.

4. CONCLUSION

The Upper Aptian carbonate deposits cropping out in the Subpiatră quarry area (Aleșd, Pădurea Craiului Mountains) most probably represent the carbonate platform from which the allodapic interbeds of the Vârciorog Formation were derived. We have identified in these deposits an association of calcareous algae dominated by dasycladaleans, and accompanied by red algae and rivulariacean-type cyanobacteria. Among the dasycladaleans, two species (*Terquemella* sp. and *Zittelina* sp.) are most probably new. Given the dramatic decline in both numbers and species of the calcareous algae (dasycladales in particular) in the vicinity of the Lower Aptian/Upper Aptian

boundary (BUCUR, 1999), the dasycladalean association from the Upper Aptian of Pădurea Craiului described here acquires a special palaeontological and palaeogeographical significance.

ACKNOWLEDGMENT

We thank Dana Pop and Nestor Sander for reviewing the English text. We also thank the two reviewers, Marc A. Conrad (Geneve) and Tonći Grgasović (Zagreb) for the useful comments on the paper. This research was partially supported by the CNCSIS grants 1330 (I. I. Bucur) and CEEX 13 (E. Săsăran).

REFERENCES

- AGUIRRE, J. & BARATTOLO, F. (2001): Presence of nemathecium in *Parachaetetes asvapatii* PIA 1936 (Rhodophyta, Gigartinales?): reproduction in "Solenoporaceans" revisited. – *Palaeontology*, 44/6, 1113–1125.
- AGUIRRE, J. & BRAGA, J.C. (1999): Reproductive structures in *Polystrata alba* (PFENDER) DENIZOT, 1968. – *Rev. Paléobiol.*, 18/2, 619–625.
- BARATTOLO, F., DE CASTRO, P. & PARENTE, M. (1993): Some remarks on *Griphoporella curvata* (Gümbel 1872) Pia 1915, dasycladalean green alga from the Upper Triassic. – In: BARATTOLO, F., DE CASTRO, P. & PARENTE, M. (eds.): *Studies on Fossil Benthic Algae*. *Boll. Soc. Paleontol. Ital., Spec. vol. 1*, 23–45.
- BASSI, D. (1997): Vegetative anatomy and palaeoecology of *Polystrata alba* (PFENDER) DENIZOT, 1968 (Cryptonemiales, Peyssonneliaceae) from Upper Eocene of northern Italy. – *Rev. Paléobiol.*, 16/2, 309–320.
- BERNIER, P. (1979): Une nouvelle espèce d'algue dasycladale: *Terquemella concava* nov. sp., dans les calcaires à "tubulures" d'âge Portlandien de la Cluse-des-Hopitiaux (Jura méridional). – *Geobios*, 12/4, 597–603.
- BODROGI, I., BONA, J. & LOBITZER, H. (1994): Vergleichende Untersuchung der Foraminiferen- und Kalkalgen-Assoziationen der Ungon-Entwicklung des Schrattekalks in Vorarlberg (Österreich) und der Nagyharsány Kalkstein Formation des Villány-Gebirges (Ungarn). – In: LOBITZER, H., CSÁSZÁR, G., & DAURER, A. (eds.): *Jubiläumsschrift 20 Jahre Geologische Zusammenarbeit Österreich-Ungarn*, 2, 225–283.
- BOTTERON, G. (1961): Etude géologique de la région de Mont d'Or (Préalpes romandes). – *Eclogae geol. Helv.*, 54/1, 29–67.
- BUČEK, S. & KÖHLER, E. (2005): Contribution to the recognition of the algae genus *Elianella*. – *Slovak Geol. Mag.*, 11/4, 301–310.
- BUCUR, I.I. (1992): Revised description of some dasyclad species from the Romanian Lower Cretaceous. – *Rev. Paléobiol.*, 11/2, 447–461.
- BUCUR, I.I. (1995): Algues calcaires dans les dépôts du Jurassique supérieur – Crétacé inférieur des Monts Pădurea Craiului. – *Studii și Cercetări, Muzeul Bistrița Năsăud*, 1, 79–89.
- BUCUR, I.I. (1999): Stratigraphic significance of some skeletal algae (Dasycladales, Caulerpales) of the Phanerozoic. – In: FARINACCI, A. & LORD, A.R.M. (eds.): *Depositional episodes and bioevents. Paleopelagos, Spec. Publ. 2*, 53–104.
- BUCUR, I.I. (2000): Lower Cretaceous dasyclad algae from the Pădurea Craiului massif (Northern Apuseni Mountains, Romania). – In: BUCUR, I.I. & FILIPESCU, S. (eds.): *Research advances in calcareous algae and microbial carbonates. Acta Palaeontologica Romaniaae*, 2 (1999), 53–72.
- BUCUR, I.I. (2001): Lower Cretaceous algae of the Reșița-Moldova Nouă zone. – In: BUCUR, I.I., FILIPESCU, S. & SĂSĂRAN, E.

- (eds.): Algae and carbonate platforms in the western part of Romania. 4th Regional Meeting of IFAA, Cluj-Napoca, Romania, Field trip Guide Book. Cluj University Press, Cluj – Napoca, 137–166.
- BUCUR, I.I., HOFFMANN, M. & KOŁODZIEJ, B. (2005): Upper Jurassic-Lowermost Cretaceous benthic algae from Tethys and the European platform: a case study from Poland. – *Revista Española de Micropaleontología*, 37/1, 105–129.
- CAMOIN, G. (1982): Plate-formes carbonatées et récifs à rudistes du Crétacé de Sicilie. – Thèse, Université de Provence, 244 p.
- CAROZZI, A. (1947): La microflore du Purbekien du Jura. Note préliminaire. – *C. R. Soc. Phys. Hist. Nat. Genève*, 64/1, 13–15.
- COCIUBA, I. (2000): Upper Jurassic-Lower Cretaceous deposits in the south-western part of Pădurea Craiului. Formal lithostratigraphic units. – *Studia Universitatis Babeş – Bolyai, Geologia*, XLV/2, 33–61.
- CONRAD, M.A. (1982): Comments on *Korkyrella* and other new Dasycladaceae. – *Rev. Paléobiol.*, 1/1, 1–5.
- DAOUD, H., BUCUR, I.I., SĂȘĂRAN, E. & COCIUBA, I. (2004): Lower Cretaceous limestones from the northern part of Pădurea Craiului (Osoiu Hill and Subpiatră sections): biostratigraphy and preliminary data on microbial structures. – *Studia Universitatis Babeş – Bolyai, Geologia*, XLIX/2, 49–62.
- DRAGASTAN, O. (1967): Alge calcareose în Jurasicul superior și Cretacicul inferior din Munții Apuseni. – *Studii și cercetări de geologie, geofizică, geografie, seria Geologie*, 12/2, 441–454.
- DRAGASTAN, O., PURECEL, R. & BRUSTUR, T. (1986): The Upper Jurassic and Lower Cretaceous Formations from the Bihor Mountains – central – southern sector (Northern Apuseni). – *Analele Universității București*, 35, 57–70.
- DRAGASTAN, O., COMAN, M. & ȘTIUCĂ, E. (1988): Bauxite-bearing formations and facies in the Pădurea Craiului and Bihor Mountains (Northern Apuseni). – *Revue Roumaine de Géologie, Géophysique, Géographie, série Géologie*, 32, 67–81.
- GRANIER, B. & DELOFFRE, R. (1993): Inventaire critique des algues dasycladales fossiles II^e partie – les algues dasycladales du Jurassique et du Crétacé. – *Rev. Paléobiol.*, 12/1, 19–65.
- GRANIER, B., BERTHOU, P.Y. & POIGNANT, A.F. (1991): Constructions bio-sédimentaires laminées *Lithothamnium* et *Parachaetetes* de la Formation Riachuelo (Albien) du Bassin de Sergipe (Nord-Est du Brésil). – *Geosciencias Sao Paolo*, 10, 169–181.
- IANOVICI, V., BORCOȘ, M., BLEAHU, M., PATRULIUS, D., LUPU, M., DIMITRESCU, R. & SAVU, H., (1976): *Geologia Munților Apuseni*. – Editura Academiei RSR, București, 631 p.
- JAFFREZO, M., POISSON, A. & AKBULUT, A. (1980): Les algues du Crétacé inférieur des séries de type Bey Daglari (Taurides occidentales, Turquie). – *Bulletin of the Mineral Research and Exploration Institute of Turkey*, 91 (1978), 76–88.
- JOHNSON, J.H. (1954): Cretaceous dasycladaceae from Gillespie County, Texas. – *J. Paleontol.*, 28/6, 787–790.
- JOHNSON, J.H. (1961): Jurassic algae from the subsurface of the Gulf coast. – *J. Paleontol.*, 35/1, 147–151.
- JOHNSON, J.H. (1965): Three Lower Cretaceous algae new to the Americas. – *J. Paleontol.*, 39/4, 719–720.
- KONISHI, K. & EPIS, R.C. (1962): Some early Cretaceous calcareous algae from Cochise County, Arizona. – *Micropaleontology*, 8/1, 67–76.
- KUSS, J. & HERBIG, H.-G. (1993): Biogeography, facies and taxonomy of Early Tertiary green algae from Egypt and Morocco. – In *BARATTOLO, F. et al. (eds.): Studies on Fossil Benthic Algae*, *Boll. Soc. Paleontol. Ital., Spec. vol. 1*, 249–280.
- LUPERTO SINNI, E. & MASSE, J.-P. (1993): The Early Cretaceous Dasycladales from the Apulia region (Southern Italy): biostratigraphic distribution and paleobiogeographic significance. – In: *BARATTOLO, F., DE CASTRO, P. & PARENTE, M. (eds.): Studies on Fossil Benthic Algae*. *Boll. Soc. Paleontol. Ital., Spec. vol. 1*, 295–309.
- MANCINELLI, A. (1992): Distribuzione delle Dasycladali (alge verdi) nei sedimenti del Cretacico inferiore in facies di piattaforma carbonatica dell'Appennino centro-meridionale (Lazio e Abruzzo). – *Studi Geologici Camerti*, XII, 7–29.
- MASSE, P. (1995): Calcareous algae and microcoprolites of the Albian platform carbonates of the Congo margin. – *Bull. Centr. Rech., Explor.-Prod. Elf-Aquitaine*, 19/2, 301–317.
- MASSE, J.-P., ARIAS, C. & VILAS, L. (1993): *Zittelina hispanica* et *Suppilulumaella minima*, dasycladales nouvelles de l'Hauteriviens du Sud-Est de l'Espagne. – *Rev. Micropal.*, 36/4, 293–300.
- MASSE, J.-P. & ARNAUD-VANNEAU, A. (1995): Early Cretaceous calcareous algae of the northwest Pacific guyots. – In: *HAGGERTY, J.A., PREMOLI-SILVA, I. RACK, F. & MCNUTT, M.K. (eds.): Proceedings of the Ocean Drilling Program, Scientific Results 144*, 935–49.
- MASSE, J.-P. & ARNAUD-VANNEAU, A. (1999): Early Cretaceous calcareous algae of the Mid-Pacific Mountains. – *Rev. Micropal.*, 42/1, 57–69.
- MASSE, J.-P. & ISINTEK, I. (2000): Algues dasycladales de l'Albien de la péninsule de Karaburun, Turquie. – *Rév. Micropal.*, 43/3, 365–380.
- MOUSSAVIAN, E. (1989): Ueber die systematische Stellung und die Bestimmungs-Kriterien der Solenoporaceen (Rhodophyceae). – *Courier Forschungs-Institut Senckenberg*, 109, 51–91.
- PATRULIUS, D. (1966): *Coptocampylodon fontis* n. sp., microfossil problematic al calcarelor urgoniene din Munții Perșani. – *Dări de Seamă ale Ședințelor, Institutul de Geologie*, LII/1 (1964–1965), 391–394.
- PATRULIUS, D., BORDEA, S. & AVRAM, E. (1982): La brèche de Gugu. Un exemple de contrôle tectonique de la sédimentation sur une plate-forme carbonatée barremo-bedoulienne (Pădurea Craiului, Monts Apuseni). – *Dări de Seamă Institutul de Geologie*, LX-IV/4, 109–117.
- PFENDER, J. & BASSE, E. (1948): *Elianella* nov. gen., *elegans* nov. sp., organisme constructeur de calcaires typiquement développé dans le Paléocène du SW malgache. – *Bull. Soc. Géol. France*, 5, 275–278.
- PIA, J. (1936): Calcareous green algae from the Upper Cretaceous of Tripoli (North Africa). – *J. Paleontol.*, 10/1, 3–13.
- PRATURLON, A. (1964): Calcareous algae from Jurassic-Cretaceous limestone of central Apennines (Southern Lazio – Abruzzi). – *Geologica Romana*, III, 171–202.
- RADOIČIĆ, R. (2005): New Dasycladales and microbiota from the lowermost Valanginian of the Mirdita Zone. – *Annales Géologiques de la Péninsule Balkanique*, 66 (2004–2005), 27–53.
- ROUX, A. (1979): Révision du genre *Epimastopora* “Pia, 1922” (Dasycladaceae). – *Bull. Centr. Rech., Explor. – Prod. Elf-Aquitaine*, 3/2, 803–810.
- SCHLAGINTWEIT, F., MISSONI, S. & GAWLICK, H.J. (2002): *Coptocampylodon? rheticus* n. sp., a new problematic microfossil (“incertae sedis”) from the Rhetian Dachstein Limestone of the Northern Calcareous Alps (Germany, Austria). – *Geol. Croat.*, 55/2, 107–119.
- SOKAČ, B. (1987): On some controversial Dasyclad genera and species and their stratigraphic position in the Lower Cretaceous deposits of the Dinarids. – *Geol. vjesnik*, 40, 9–38.

- SOKAČ, B. (2004): On some Peri-Mediterranean Lower Cretaceous dasyclad species (calcareous algae, Dasycladales) previously assigned to different genera. – *Geol. Croat.*, 57/1, 15–53.
- SOKAČ, B. & VELIĆ, I. (1981): *Korkyrella* n. gen. (Dasycladales) from the Upper Barremian and Lower Aptian of the Island of Korčula. – *Palaeontologia Jugoslavica*, 24 (1980/1), 1–12.
- SOTAK, J. & MIŠIK, M. (1993): Jurassic and Lower Cretaceous dasycladalean algae from the western Carpathians. – In: BARATTOLO, F., DE CASTRO, P. & PARENTE, M. (eds.): *Studies on Fossil Benthic Algae*. *Boll. Soc. Paleontol. Ital.*, Special volume 1, 383–404.
- STOKAR, R. (2000): On the occurrence of *Parachaetetes asvapatii* PIA, 1936 (Solenoporaceae) in the Montorfano Member type-section (Tabiagio Formation, Como, northern Italy). – *Rev. Paléobiol.*, 19/2, 427–434.

Manuscript received March 30, 2008
Revised manuscript accepted June 16, 2008