



Minnesota State University Moorhead
Red

Histories of MSUM

University Archives

6-5-1937

Program for Through the Portals: Moorhead State Teachers College, 1887-1937 (1937)

Moorhead State Teachers College

Follow this and additional works at: <https://red.mnstate.edu/histories>

Recommended Citation

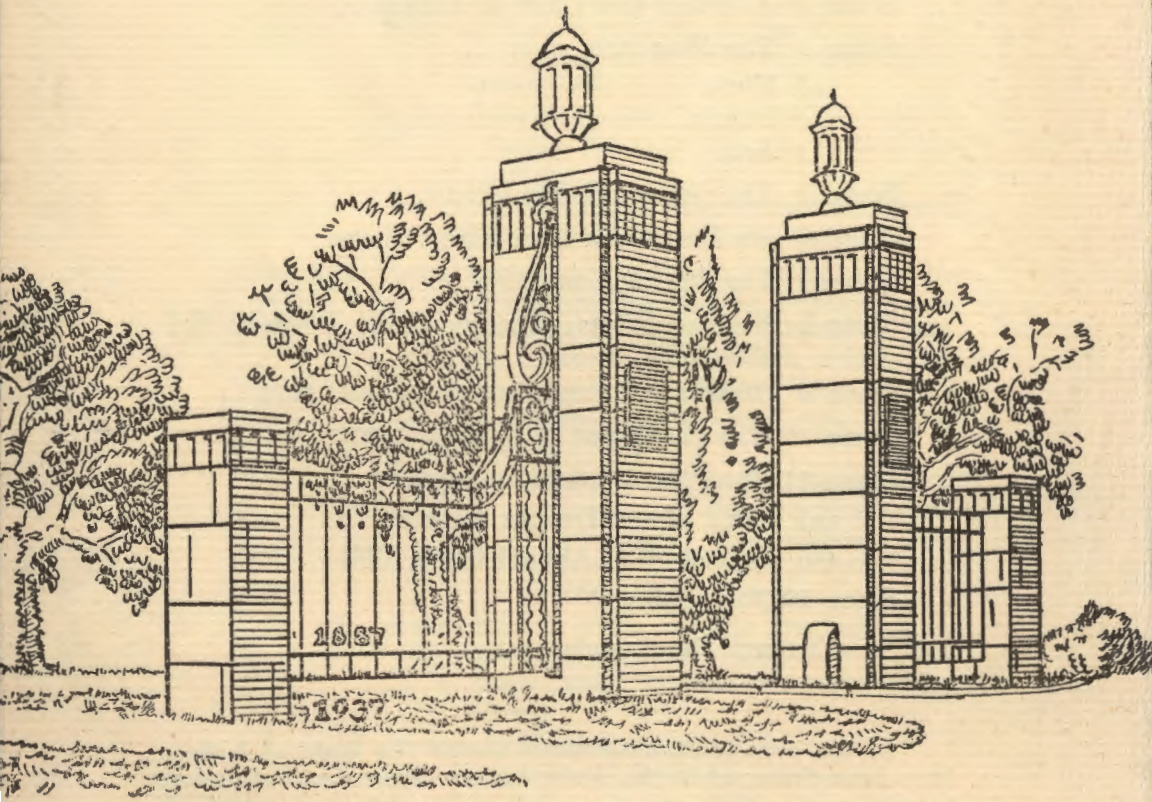
Moorhead State Teachers College, "Program for Through the Portals: Moorhead State Teachers College, 1887-1937 (1937)" (1937). *Histories of MSUM*. 24.
<https://red.mnstate.edu/histories/24>

This Book is brought to you for free and open access by the University Archives at Red. It has been accepted for inclusion in Histories of MSUM by an authorized administrator of Red. For more information, please contact kramer@mnstate.edu.

ARCHIVES
MOORHEAD STATE COLLEGE LIBRARY
MOORHEAD, MINNESOTA

THROUGH THE PORTALS

Moorhead State Teachers College
1887-1937



Weld Hall Auditorium

June 5, 1937

Fiftieth Anniversary

1887-1937

Historical Scenes

SYNOPSIS OF SCENES

- Part I Red Man's Vision
- Part II The Pioneer's Dream
- Part III A Statesman's Ideals
- Part IV Yesterday and To-day
 - Scene 1 Co-eds of the Early Days
 - Scene 2 The First Training School
 - Scene 3 Athletics and Physical Education
 - Scene 4 The Fine Arts
 - (a) Music
 - (b) Drama
 - (c) Art
 - Scene 5 The College Organizations
 - Scene 6 An Evening in the College Home
 - Scene 7 The Call to Arms, 1917
 - Scene 8 Normal School Becomes State Teachers College, 1921
 - Scene 9 Granting of First College Degree, 1926
 - Scene 10 The Passing of "Old Main", 1930
 - Scene 11 The "New College"
 - (a) Birth of the Dragon Banner
 - (b) Dedication of Alumni Gates, 1933
 - Scene 12 Our Leaders
- Part V Through the Portals

In the presentation of these scenes the facts of history have been followed in the main, but an effort has been made to portray the aims and the spirit of the men and women of this period rather than to give exact impersonations.

CAST

Spirit of History Trevor Sandness

- Part I Milton Holtan.
- Part II *Ray Simonitsch, Marrida Bjerke, Nina Larimore, Joe Schwendeman, Albert Lokken, Melvin Wedul, Gretchen Rehfeld.
- Part III Margaret Vowles.
- Part IV Scene 1 Beatrice Gingery, Ardith McDonald, Florence Koops, Edward Morgan.
- Scene 2 *Clara Undseth (Teacher), Ruth Bystrom, Thomas Nemzek, Sarah Lemon, Charles Scheel, Margaret Welter, Delores Larson, Earl Kittleson.
- Scene 3 Pauline Eddy, Walter Scheela, Tom McDonald, Frank Marconeri, Neil Wohlwend, David DuVall, Sara Stimmel, Elsie Raer, Agnes Nemzek, Cleora Scheidt, Irene Wicklund.
- Scene 4 Music—Miriam, Virginia and Dorothy Murray, Morton Presting, Alfred Richards, Eugene Struble, Reinhold Utke.
- Drama—*Frank Nemzek, *Helen Berquist Person, *Lyman Bringgold, Margaret Carlson, Willard Burke.
- Art—Clara Mae Johnson, Dorothy Chisholm, Martha Lou Price, Helen Peoples, Evelyn Rodenberg.
- Scene 5 Social—Orville Schwankl, Vernon Zehren, Margaret Vowles, Gretchen Rehfeld, Virginia Larson, Constance Cocking, Adeline Bjerkness, Thelma Mickelson, Geraldine Hoel, Mildred Norling, Leverett Hoag, Melvin Wedul.
- Religious—Jeanette Johnson, Olaf Syltie, Arthur Grove.
- Departmental—Rose Naplin, Marlys Meland, Steven Archer, Avis Aamot, Arthur Holmos, Helen Boen, Violet Glasrud, Henry Stevenson, Clarence Eskildsen, Martin Barstad, Percy Gilbert.
- Music—Elizabeth Trace, Borghild Headland, Albert Lokken, Frances Gates, Mary Dunham, Nora Glesne, Edsel Wicklund, Bruce Keifer, Paul Monson.
- Student Commission—Elmer Johnson.
- Honorary Fraternities—Kenneth Christiansen, Milliecent Prescott, John Stucky, Scott Matthew.

- Scene 6 Annabelle Cruikshank, Wilmine Haarstick, Ruth Horien, Jessie Song, Alice Graves, Barbara Driscoll.
- Scene 7 Margaret Shaw, George Serbin, Marco Gotta, Margaret Vowles.
- Scene 8 Melvin Wedul.
- Scene 9 Armand Larson.
- Scene 10 Marian Beardsley, Helen Peoples, Bernice Erickson, Marian Schutt, Alma Flatin, Marjorie Strand.
- Scene 11 Olaf Syltie, *Alice Corneliussen.
- Scene 12 *Louise Murray Headland.
- Part V College Band.

PRODUCTION STAFF

FACULTY STAFF

Script—*Lucia Askegaard, Nellie A. Price, *Ethel Tainter.
 Music—Arnold M. Christensen, *Daniel Preston.
 Training School—*Blanche Loudon.
 Art—Margaret McCarten, Millie H. Dahl.
 Physical Education—Flora Frick.
 Fire Dance—Created and directed by Jessie McKellar. Music composed by DeEtt Hopkins.
 Scene Construction—*Henry Weltzin.
 Publicity—Byron Murray.
 Director—*Ethel Tainter.

STUDENT STAFF

Music—Organ, Ruth Hannaford
 Flute, Millicent Prescott
 Trumpets, Joseph Bauer, George Hull.
 Stage Managers—Kenneth Christiansen, Olaf Syltie.
 Electrician—Leverett Hoag.
 Publicity—Clarence Eskildsen.
 Program Artist—Joe Formick.

*Names starred are names of alumni.

ARCHIVES
 MOORHEAD STATE COLLEGE LIBRARY
 MOORHEAD, MINNESOTA