



Minnesota State University Moorhead
RED: a Repository of Digital Collections

Yearbooks

University Archives

1-1-1928

Praeceptor, 1928

Minnesota State Teachers College

Follow this and additional works at: <https://red.mnstate.edu/yearbooks>



Part of the [Archival Science Commons](#)

Recommended Citation

Minnesota State Teachers College, "Praeceptor, 1928" (1928). *Yearbooks*. 12.
<https://red.mnstate.edu/yearbooks/12>

This Book is brought to you for free and open access by the University Archives at RED: a Repository of Digital Collections. It has been accepted for inclusion in Yearbooks by an authorized administrator of RED: a Repository of Digital Collections. For more information, please contact RED@mnstate.edu.

PRAECEPTOR

19

28





The
Præceptor
1928



Published by
State Teachers College
MOORHEAD, MINNESOTA



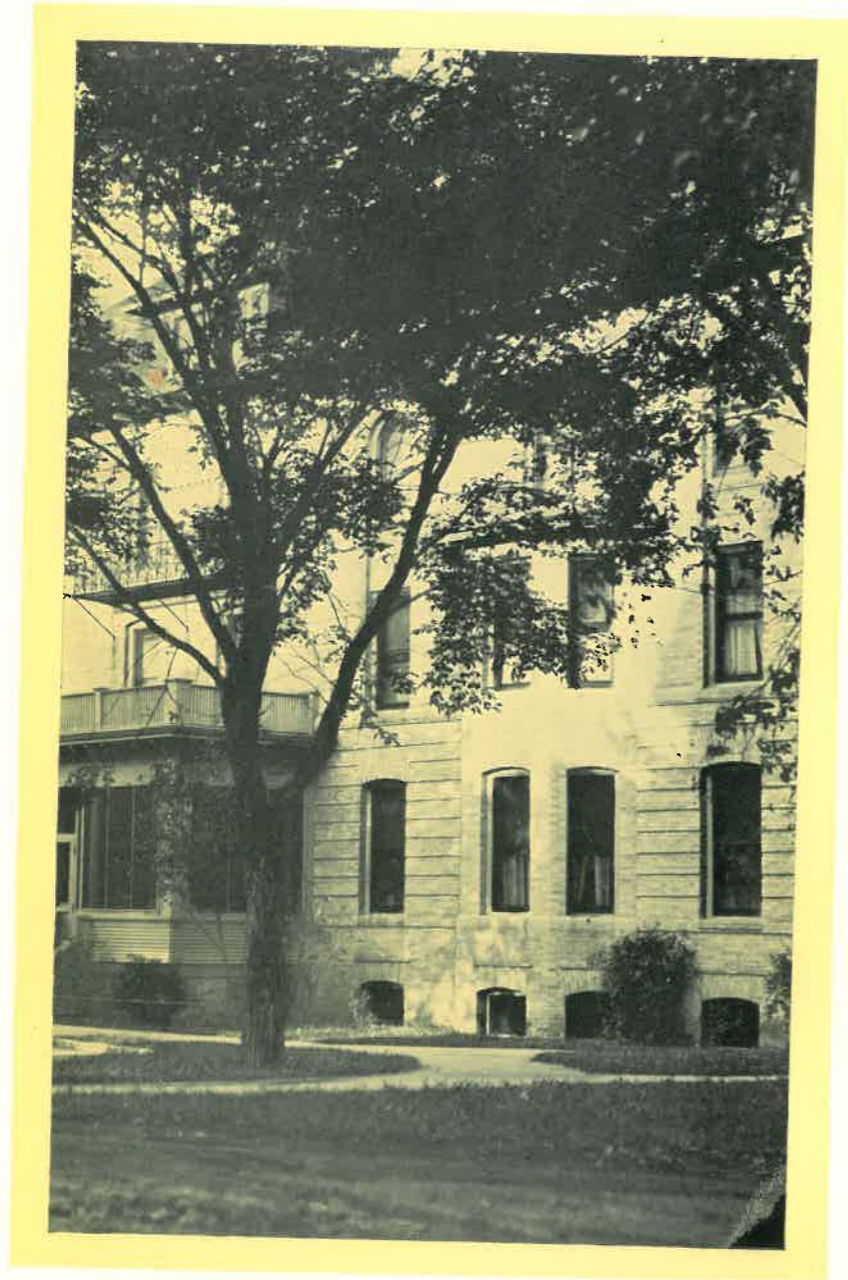
D·E·D·I·C·A·T·I·O·N

TO the old Roman civilization which is an integral part of the sociological inheritance of mankind, this book is dedicated.

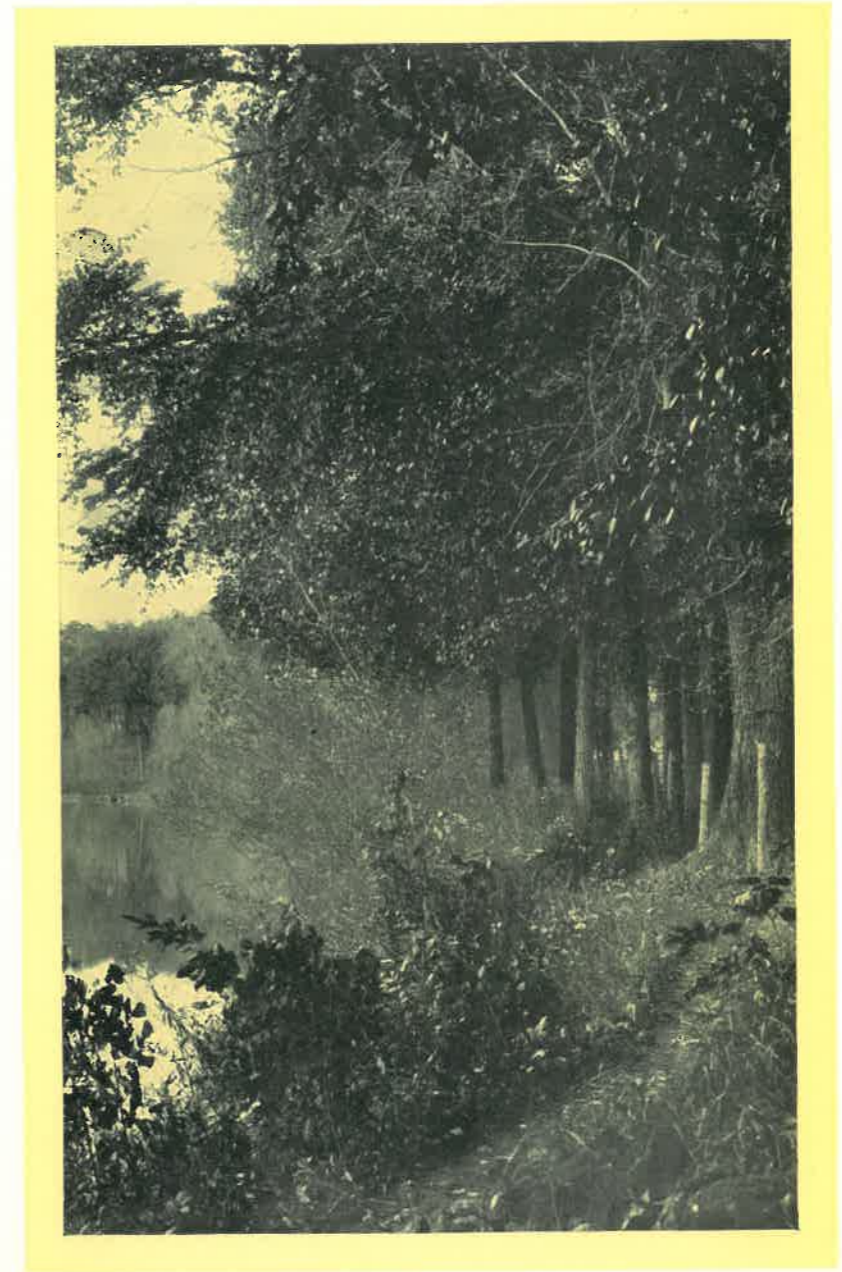
¶ The glorious Roman civilization of centuries ago lives today in the bustle and activity of modern America, with its buoyancy and love of bigness and power; it is a dynamic force which aids man in the quest of progress.



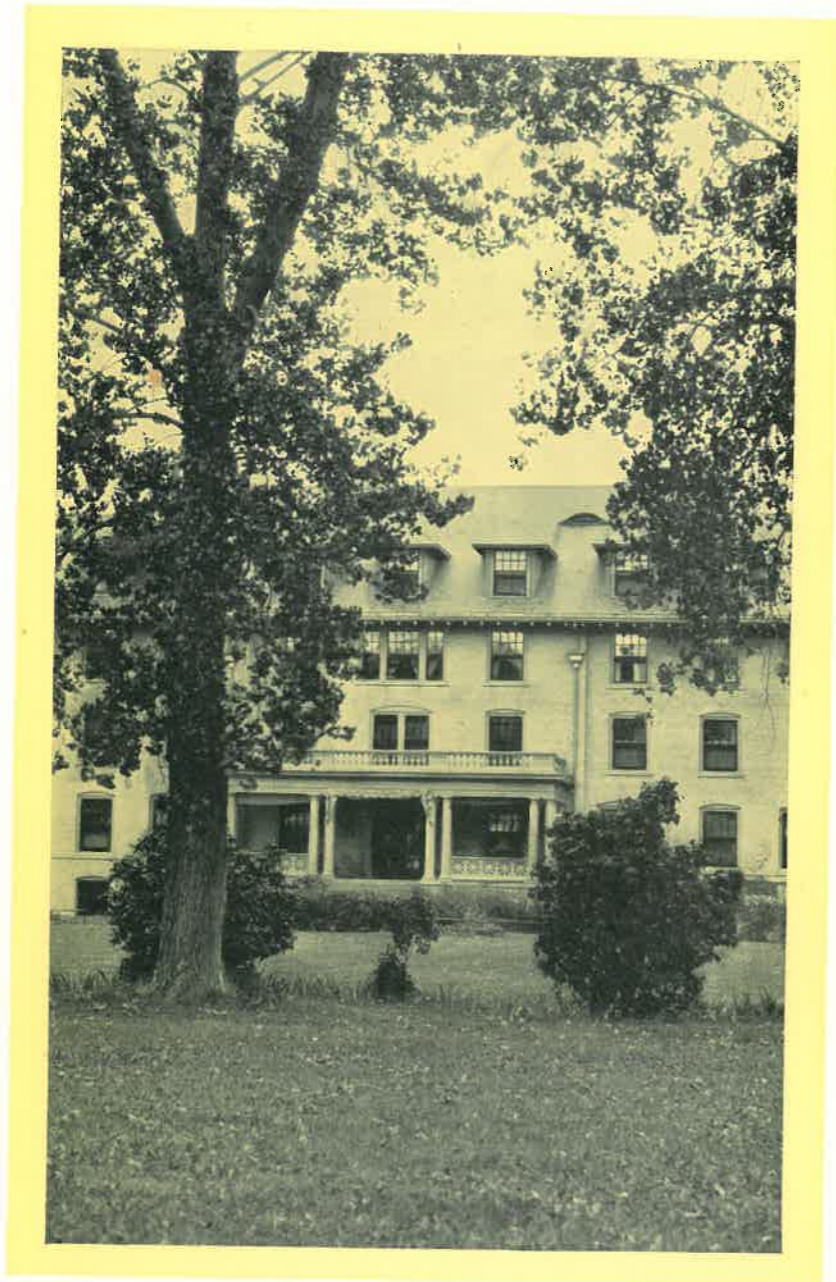
The College



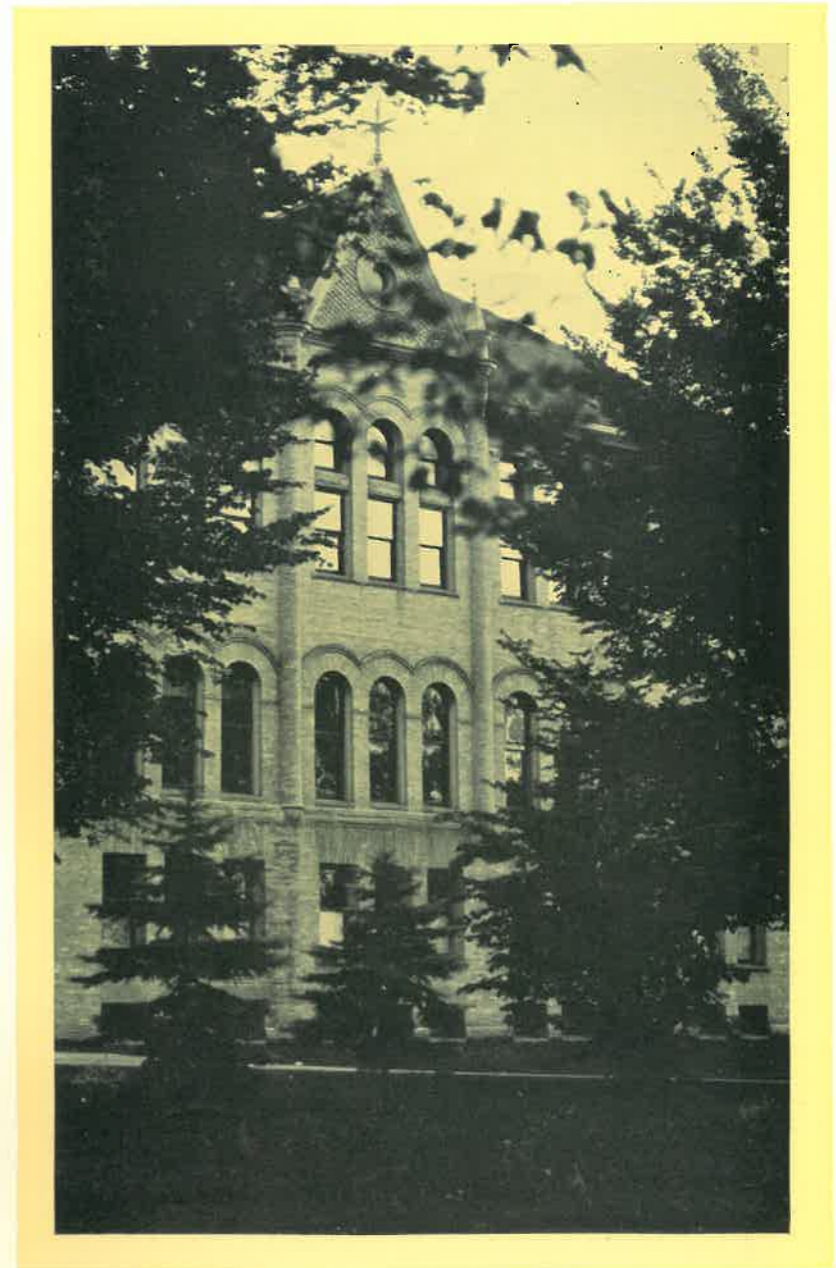
WHEELER HALL



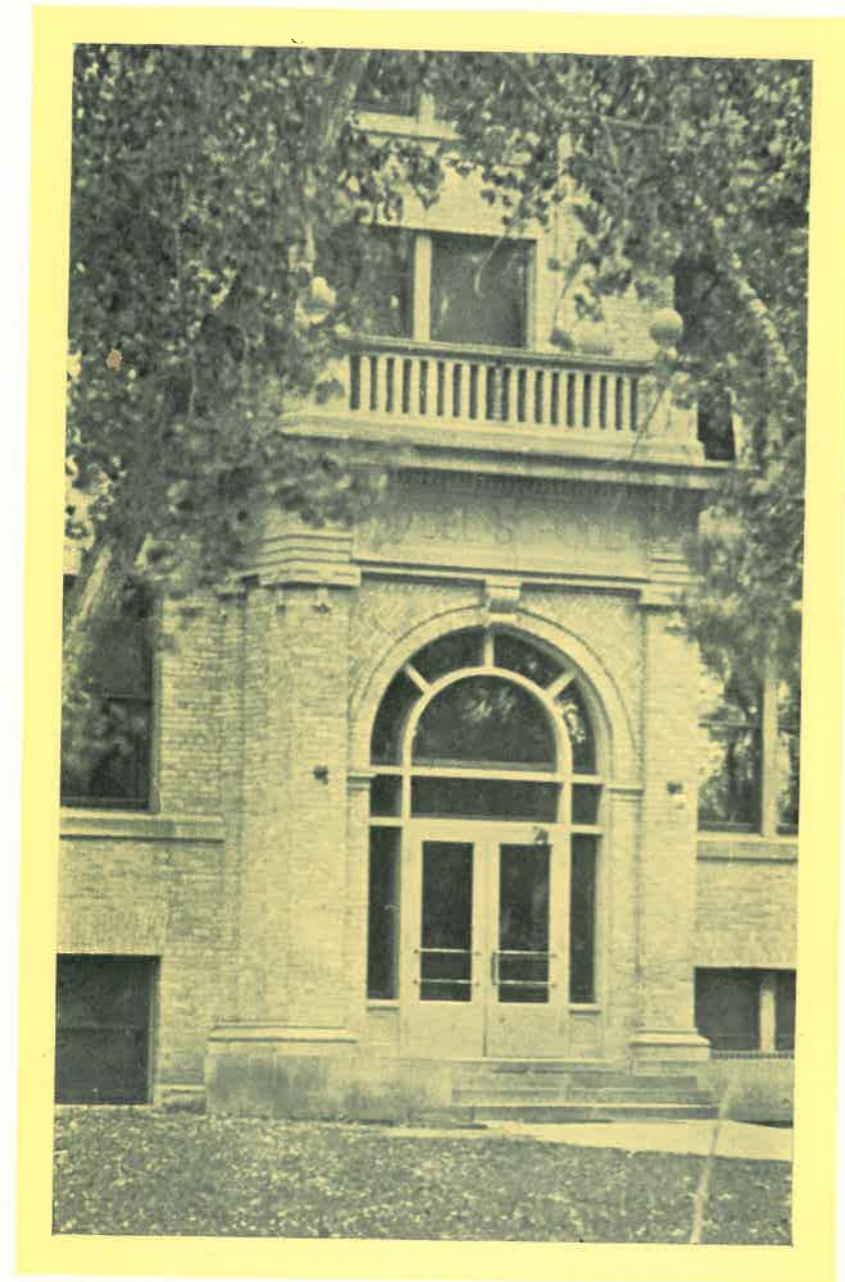
SCENE ALONG THE RED RIVER



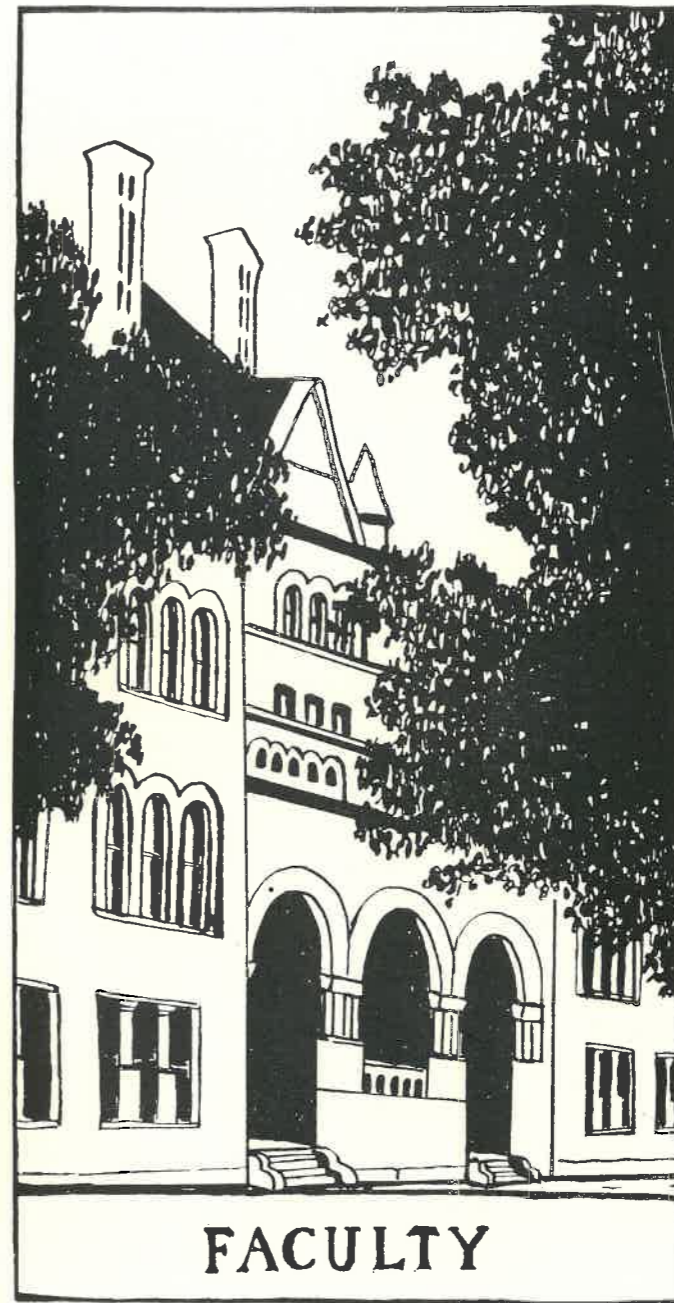
COMSTOCK HALL



JUNIOR HIGH SCHOOL



ENTRANCE TO THE TRAINING SCHOOL



FACULTY



R. B. MACLEAN, Ph.B., M.A.,
President



O. J. HAGEN, A.M., M.D., F.A.C.S.,
Resident Director

MARY V. ANDERSON
A. B., R. N.
Gustavus Adolphus, Swedish
Hospital School of Nursing
School Nurse



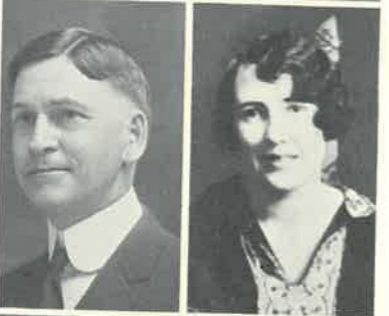
C. P. ARCHER
B. A., M. A., Ph. D.
Southern Iowa Normal
School, Iowa State Teachers
College, State University of
Iowa
Education and Psychology

C. A. BALLARD, B. S.
University of Minnesota,
Minnesota Seaside Station,
Vancouver Island
Biological Science, Chemistry



MARGARET E. BIERI, B. S.
Carleton College, Columbia
University
Rural Education

SAMUEL G. BRIDGES
A. B., A. M.
Denison University, Ohio
State University, University
of Minnesota
History



FLORENCE BULLARD, B. A.
Northwestern University
Music Assistant

AGNES E. CARLSON
Advanced Diploma
La Crosse Normal, Universi-
ty of Minnesota
Intermediate Associate



ARNOLD M. CHRISTENSEN
A. B., A. M.
Carleton College, University
of Minnesota
Education

MAYME E. CHRISTENSON
Diploma
State Teachers College
Moorhead, University of
Chicago, University of Iowa
Primary Associate



MILLIE H. DAHL
House Director

ETHEL B. DURBORAW, B. S.
Sup. Dip. Chicago Kinder-
garten College, Columbia
University
Kindergarten Department



MARTHA M. GIBBON
B. A., M. A.
University of Wisconsin
English



FLORA M. FRICK,
B. A., M. A.
Butler College, University of
Wisconsin, Northwestern
University
Physical Education

MINNIE GOODHUE, B. S.
Columbia University, Uni-
versity of Chicago
Junior High School Associate

GRACE L. GOODSSELL
University of Minnesota
Library



S. A. HAMRIN, B. A., M. A.
Hamline University, Univer-
sity of Chicago
Education

ANNA J. HANDEYSIDE
Ypsilanti State Normal Col-
lege, Cleary Business College
Accountant



ELLA A. HAWKINSON
B. A., M. A.
Duluth State Teachers Col-
lege, University of Minnesota
Junior High School Principal

EVELYN A. JOHNSON
Advanced Diploma
Moorhead State Teachers
College
*Training School, Assistant
Supervisor*



RAGNHILD JOHNSON
Moorhead State Teachers
College
Secretary Training School

ALFREDA JONES
Assistant Nurse



JOSEPH KISE, B. A.
St. Olaf College, Minnesota
University, Harvard
Social Science

MYRTLE M. KRAABEL, B. A.
University of North Dakota
Ecole Normal, Saint-Ger-
main-en-Laye, France
French



KATHERINE LEONARD,
A. B., M. A.
University of Vermont, Chi-
cago University, Teachers
College, Columbia University
Mathematics

GEORGINA LOMMEN,
B. A., M. A.
University of Minnesota, Co-
lumbia University, Universi-
ty of Chicago
Director of Training School



BLANCHE LOUDON, B. S.
Columbia University
Intermediate Principal

MARGARET M. McCARTEN
B. S.
Art Institute of Chicago,
Fargo College, North Dakota
Agricultural College
Art Department



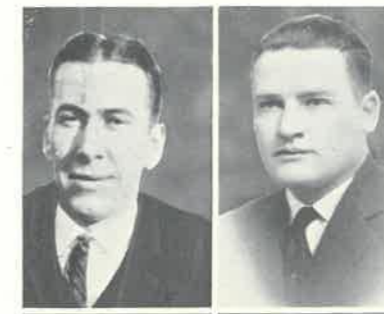
RHODA MALAND
Advanced Diploma
Moorhead State Teachers
College, University of Min-
nesota, University of Iowa
Intermediate Department

JESSIE MCKELLAR, B. S.
University of Wisconsin
Physical Education



MARY CREW MOORE
B. A., M. A.
Butler University, University
of Wisconsin, Columbia Uni-
versity
English

BYRON D. MURRAY
A. B., B. S. in Ed., A. M.
N. W. Missouri State Teach-
ers College, University of
Missouri, University of Iowa
English and Publications



DANIEL L. PRESTON
Conservatory of Music, Law-
rence University, University
of Minnesota
Music



LOIS M. PENNIE
St. Cloud State Teachers
College, Moorhead State
Teachers College, Palmer Su-
pervisors Course
Penmanship



OLE R. SANDE
Advanced Diploma
Moorhead State Teachers
College, University of Min-
nesota
Education



PHEBE H. VOWLES
Dakota Business College
Secretary



ALEX J. NEMZEK
Capt. Inf. N. S. R.
North Dakota Agricultural
College, University of Min-
nesota, University of Poi-
tiers, France
Physical Education and
Athletics

JENNIE M. OWENS, B. A.
Ripon College, Teachers Col-
lege, Columbia University,
Administration

MARY C. RAINEY, B. S.
Oswego State Normal School
Teachers College, Columbia
Principal Primary Dept. Ele-
mentary School

ETHEL TAINTER
Ph. B., B. E.
Professional Certificate from
Columbia College of Expres-
sion, University of Chicago,
Dearborn School of Lyceum
Arts
Reading and Speech,
Dramatics

HENRY B. WELTZIN, B. E.
Moorhead State Teachers
College
Industrial Arts

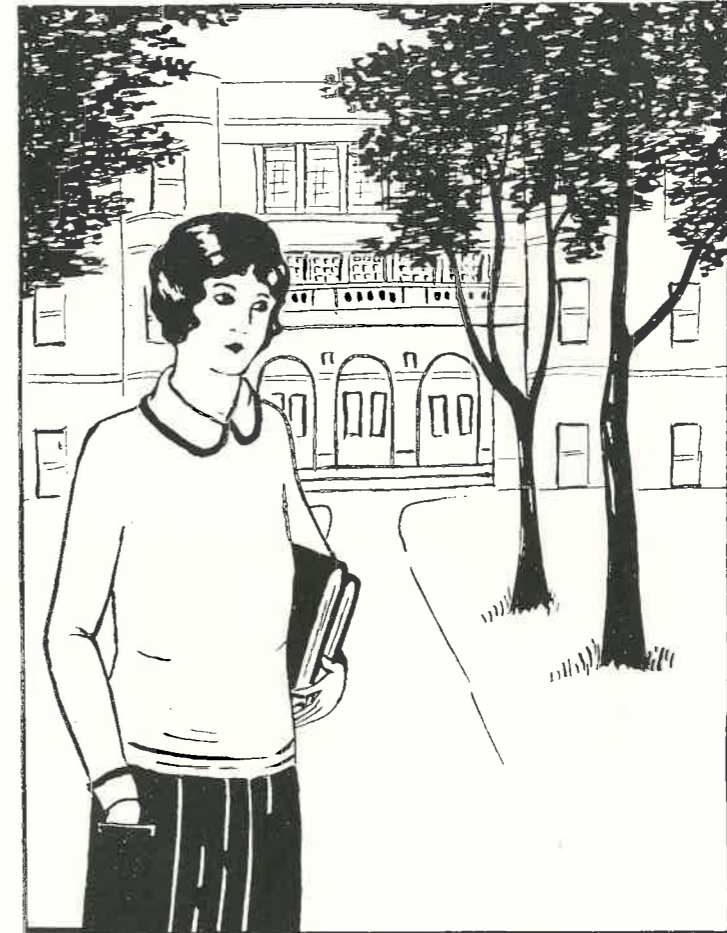
WILFRED C. WHITE, B. A.
Hamline University, University of Minnesota
Junior High School Associate, Physical Science



MATILDA WILLIAMS, B. A.
National Kindergarten College, University of Chicago
Kindergarten Associate



MABEL E. LUMLEY
Ph. B., M. A.
Hamline University, University of Minnesota, Columbia University
Dean of Women



CLASSES



SENIORS

ELMA KARLSTROM - - Moorhead, Minn.
Degree

Y. W. C. A., Lambda Phi Sigma, Debating, Art Club, Class Play.

ROSELLA LYTTLETON - - Graceville, Minn.
Degree

Gamma Nu, Praeceptor, Althaia, Dramatic Club, Class Play.

VIVIAN MERO - - Moorhead, Minn.
Degree

Y. W. C. A., Gamma Nu, French Club, Althaia, Pep Squad, Kappa Pi, Student Council.

CLAUDE NEMZEK - - Moorhead, Minn.
Degree

Lambda Phi Sigma, Owls, Delta Sigma, "M" Club, French Club, Praeceptor, Editor-in-chief, Student Activity Fee Committee, Pres. Athletic Board of Control, Althaia, Pres. Student Council, Pres. Executive Senate, Football, Baseball.

FRANK NEMZEK - - Moorhead, Minn.
Degree

Owls Patriarch, Delta Sigma, "M" Club, Male Chorus, School Chorus, Alpha Psi Omega, Dramatic Club, Student Council, Football, Baseball.

LOIS PENNIE - - Villard, Minn.
Degree

Althaia, Lambda Phi Sigma.

HAROLD PREUSSE - - Dumont, Minn.
Degree

Y. M. C. A., Delta Sigma, Debating, MiSTiC.

HAROLD J. SAND - - Elbow Lake, Minn.
Degree

Y. M. C. A., Lambda Phi Sigma, Owls, Pres. Senior Class, Delta Sigma, Country Life Club, Male Chorus, School Chorus, French Club, MiSTiC, Student Activity Fee Committee, Althaia, Student Council, Band, Orchestra, Ass't Athletic Financial Mgr.

MARVIN SYVERSON - - Brandon, Minn.
Degree

Y. M. C. A., Owls, Pres., Country Life Club, Student Council, Baseball.



JUNIORS

ARLO K. BALDWIN - - Fargo, N. D.
Degree

Owls, Delta Sigma, "M" Club, MiSTiC, Student Council, Football, Basket-Ball, Track.

FRANCIS BORDSEN - - Fargo, N. D.
Degree

Delta Sigma, "M" Club, Male Chorus, Debating, MiSTiC, Althaia, Student Athletic Manager.

HJALMER ERICKSON - - Moorhead, Minn.
Degree

Owls, Delta Sigma, Pres. "M" Club, MiSTiC, Student Council, Football, Basket-Ball.

EVELYN JOHNSON - - Lake Park, Minn.
Degree

Y. M. C. A., Lambda Phi Sigma, Country Life Club, School Chorus, Chapel Choir, Women's League.

GLADYS KARLSTROM - - Moorhead, Minn.
Degree

Y. W. C. A., Camp Fire, Women's League, W. A. L.

THEODORE NEMZEK - - Moorhead, Minn.
Degree

Delta Sigma, "M" Club, Male Chorus, Baseball, School Chorus, Football, Track.

FREDA SCHROEDER - - Wheaton, Minn.
Degree

Gamma Nu, School Chorus, Althaia, Kappa Pi, Women's League.

GEORGE SIMSON - - Wheaton, Minn.
Degree

Y. M. C. A., Owls, Delta Sigma, "M" Club, MiSTiC, Student Council, Football.

BASIL TOWNSEND - - Pine River, Minn.
Degree

Lambda Phi Sigma, Owls, Delta Sigma, "M" Club, MiSTiC, Praeceptor, Student Council, Football, Track.





SOPHOMORES



MILDRED AANES - - Montevideo, Minn.
Intermediate
Y. W. C. A., Country Life Club.



E. MARIE ALSAKER - - Renville, Minn.
Upper Grade
Althaia, Camp Fire.



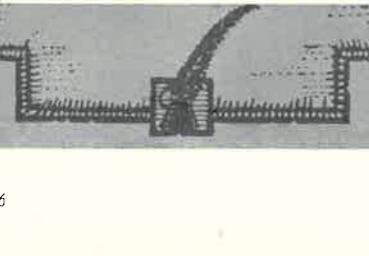
IRENE AMUNDSEN - - Hallock, Minn.
Intermediate
Althaia.



ANNA ANDERSON - - Grandin, N. D.
Intermediate
Y. W. C. A., Country Life Club, School Chorus, Women's League.



VERMUND ANDERSEN - - Pine River, Minn.
Upper Grade
Owls, Delta Sigma, MiSTiC, Male Chorus, Football.



OCTAVIA ASKEGAARD - - Comstock, Minn.
Intermediate
Pi Mu Phi, Country Life Club, Chorus, Camp Fire, Women's League, W. A. L.



CORA BARSTAD - - Lake Park, Minn.
Intermediate
Country Life Club, Chorus, Althaia, Women's League, W. A. L.

ALMA BAUMGARTEN - - Fergus Falls, Minn.
Upper Grade
Y. W. C. A., Country Life Club.

AGNES BECKSTROM - - Moorhead, Minn.
Intermediate
Country Life Club.

FLORENCE BELL - - Akeley, Minn.
Primary
Pep Squad, Dramatic Club, Women's League, Class Play.

SOPHOMORES



MYRTLE BERGLYN - - Alexandria, Minn.
Intermediate



LOIS BESTIC - - Moorhead, Minn.
Music
Pi Mu Phi, Chorus, Chapel Choir, Praeceptor Staff, Pres. Radio Club, Women's League.



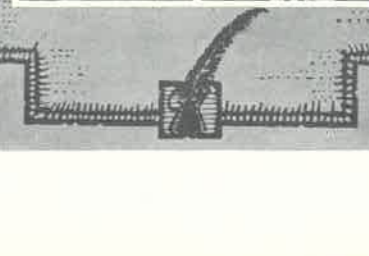
JAMES BESTICK - - Moorhead, Minn.
Music
Delta Sigma, Band.



DOROTHY BETTSCHEN - - Arthur, N. D.
Primary
Y. W. C. A., Country Life Club, Kappa Pi.



CLEONA BOCK - - Breckenridge, Minn.
Primary
Country Life Club, Art Club, Pep Squad, Camp Fire.



LEONA BOTTS - - Borup, Minn.
Intermediate
Country Life Club, Camp Fire.

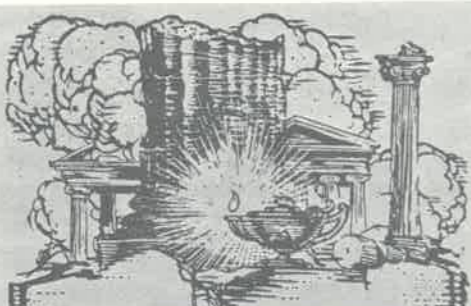


ALICE BOYUM - - Fergus Falls, Minn.
Intermediate
Y. W. C. A., Country Life Club, Althaia, Women's League

EDYTH BRADY - - Minneapolis, Minn.
Primary
Gamma Nu, Kappa Pi.

MYRTLE BRANDVIK - - Fargo, N. D.
Intermediate
Y. W. C. A., Chorus, Chapel Choir, Pep Squad, W. A. L.

ALICE BREDESON - - Thief River Falls, Minn.
Intermediate
Country Life Club, Chapel Choir, Radio Club, Camp Fire.



SOPHOMORES



HILDA BRONSON - - Doran, Minn.
Primary
Country Life Club, Women's League.



CECILIA BROWN - - Fargo, N. D.
Music
Chorus, Chapel Choir, Radio Club, Art Club.



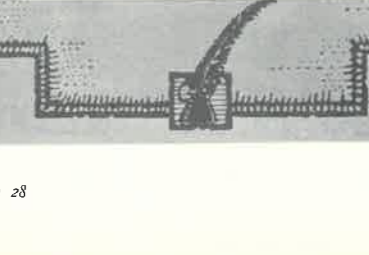
WILSON BURTON - - Wheaton, Minn.
Physical Education
Owls, Delta Sigma, "M" Club, Male Chorus, MiSTiC, Athletic Board of Control, Dramatic Club, Student Council, Football, Basket-ball, Track.



EVELYN CARLSON - - Fergus Falls, Minn.
Primary
Y. W. C. A., Debating, Art Club, Camp Fire, W. A. L.



IRENE CARLSON - - Campbell, Minn.
Intermediate
Y. W. C. A., Lambda Phi Sigma, Country Life Club, Women's League, W. A. L.



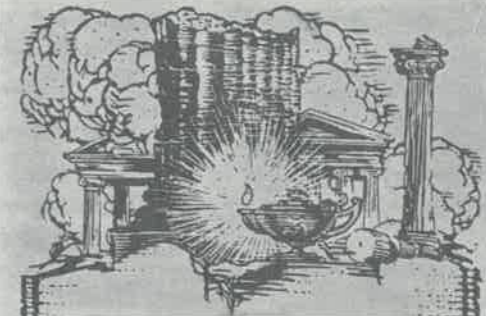
NINA CARLSON - - Staples, Minn.
Primary
Y. W. C. A., Country Life Club.

GENEVA CHRISTENSON - Crookston, Minn.
Primary
School Chorus, Pep Squad, Dramatic Club, Kappa Pi, Women's League, Band, Class Play.

BLAYNE CHRISTIAN - Pine River, Minn.
Upper Grade
Delta Sigma, Football, Basket-ball.

ANSOLF DAHLEN - Thief River Falls, Minn.
Upper Grade
Y. W. C. A., Country Life Club, W. A. L.

MILDRED DAHLEN - - Benford, N. D.
Upper Grade
Y. W. C. A., Country Life Club, Camp Fire, Women's League, W. A. L.



SOPHOMORES



AGNES DAHLQUIST - Warren, Minn.
Upper Grade
Y. W. C. A., Country Life Club, Camp Fire.



JOHN DAHLQUIST - Lancaster, Minn.
Upper Grade
Y. M. C. A., Country Life Club, Delta Sigma.



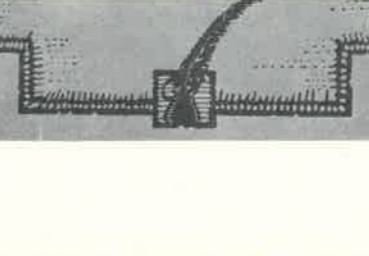
FLORENCE DAVIS - Fergus Falls, Minn.
Kindergarten-Primary
Y. W. C. A., Lambda Phi Sigma.



MAISEL DRINKWINE - Mentor, Minn.
Upper Grade
Art Club.



ALICE EASTLUND - Moorhead, Minn.
Intermediate
Pep Squad, Camp Fire, W. A. L.



EDELWEISS EDDY - - Cyrus, Minn.
Intermediate
Althia, Campfire, W. A. L.

IRENE EDMONDS - Hillsboro, N. D.
Primary

BENDA EIDEM - - Marietta, Minn.
Intermediate
Y. W. C. A., Country Life Club, Campfire, W. A. L.

MARY ELLIS - - Moorhead, Minn.
Intermediate

RUTH ELLISON - - Fargo, N. D.
Primary
Gamma Nu, French Club, MiStiC Staff, Pep Squad, Kappa Pi.



SOPHOMORES

ELLSETH EDMEE - - Fergus Falls, Minn.
Upper Grade
Y. W. C. A., Camp Fire, W. A. L.

MARGUERITE ERICKSON - - Karlstad, Minn.
Primary
Pi Mu Phi, Country Life Club, Pep Squad, Camp Fire, Kappa Pi, Women's League, W. A. L.

ESTHER FLAMAR - - Milnor, N. D.
Intermediate
Y. W. C. A., Country Life Club.

MAUDE FORSETH - - Halstad, Minn.
Primary
Y. W. C. A., Country Life Club, Camp Fire, W. A. L.

VIOLET GARDEN - - Gary, Minn.
Primary
Y. W. C. A., Y. W. Cabinet, Country Life Club, W. A. L., Orchestra.

CORAL GEORGE - - Fargo, N. D.
Primary

ANNABELLE GODFREY - - Moorhead, Minn.
Music
Treas. Freshman Class, Pi Mu Phi, Chorus, Chapel Choir, Kappa Pi, Student Council, Women's League, W. A. L.

PHILIP GREENDAHL - - Gary, Minn.
Upper Grade
Y. M. C. A., Lambda Phi Sigma, Delta Sigma, Male Chorus, School Chorus, Althaia, Band, Orchestra.

ELSIE GRINA - - Fergus Falls, Minn.
Intermediate
Y. W. C. A., Art Club, Camp Fire Student Council.

DORA GRUGAL - - Newfolden, Minn.
Primary
Dramatic Club, Women's League.

SOPHOMORES

IDA HAAGENSON - - Barnesville, Minn.
Intermediate
Y. W. C. A., Lambda Phi Sigma, Pi Mu Phi, Monogram Club, Women's League, W. A. L.

G. IRENE HAGEN - - Starbuck, Minn.
Music
Gamma Nu, School Chorus, Chapel Choir, French Club, Praeceptor, Radio Club, Student Council.

LOIS HALL - - Dilworth, Minn.
Primary
Sec. Sophomore Class, Pi Mu Phi, Athletic Board of Control, Pep Squad, Camp Fire, Kappa Pi, Monogram Club, Women's League, W. A. L.

ESTHER HALVORSEN - - Glendive, Montana
Primary
Althaia, Kappa Pi, Women's League, W. A. L.

GORDON HANSON - - Kennedy, Minn.
Rural
Y. M. C. A., Owls, Delta Sigma, Country Life Club, Praeceptor, Dramatic Club.

GRACE HANSON - - Newfolden, Minn.
Primary
Gamma Nu, School Chorus, Chapel Choir, Pep Squad, Kappa Pi.

MARY HANSON - - Stephen, Minn.
Intermediate
Y. W. C. A., Pi Mu Phi, Mystic, Praeceptor, Athletic Board of Control, Pep Squad, Monogram Club, W. A. L.

AGNES HARRIS - - Fergus Falls, Minn.
Intermediate
Y. W. C. A., Art Club, Camp Fire, W. A. L.

HAZEL HEGLAND - - Roseau, Minn.
Advanced Rural
Y. W. C. A. Country Life Club, MiSTiC, Althaia, Pep Squad, Camp Fire, Women's League, W. A. L.

MYRTLE HELLELAND - - Halstad, Minn.
Intermediate
Y. W. C. A., Country Life Club, School Chorus, Women's League, W. A. L.





SOPHOMORES

ERMA HERZOG - Pelican Rapids, Minn.
Rural
Camp Fire, Country Life Club.

IDA HETLAND - - Deering, N. D.
Upper Grade
Althaia, Women's league, W. A. L.

RUTH HIDLEBAUGH - Foxhome, Minn.
Intermediate
Camp Fire.

GERTRUDE HOLM - - Roseau, Minn.
Intermediate
Y. W. C. A., Pres. Pi Mu Phi, Chapel
Choir, Praeceptor, Camp Fire, Student
Council, W. A. L.

HOWARD HOUSTON - Herman, Minn.
Industrial Arts, Y. M. C. A., Delta Sigma.

JEAN HOWIE - - Moorhead, Minn.
Primary
Y. W. C. A., Kappa Pi, Student Council,
Women's League, Dramatic Club.

CORA HUMPHNER - Minneapolis, Minn.
Primary
Camp Fire.

MARGARET HVIDSTEN - Stephen, Minn.
Intermediate
Pi Mu Phi, Country Life Club, Pep
Squad, Monogram Club, Women's League,
W. A. L.

AGNES JOHNSON - Clarkfield, Minn.
Primary
Y. W. C. A., W. A. L.

ELROY JOHNSON - Audubon, Minn.
Upper Grade
Pres. Y. M. C. A., Owls, Male Chorus,
Debating, Dramatic Club, Student Coun-
cil.

SOPHOMORES

EUNICE JOHNSON - Mahnomon, Minn.
Primary
Y. W. C. A., Country Life Club, Kappa
Pi, Women's League.

HAZEL JOHNSON - - Halstad, Minn.
Primary
Gamma Nu, Country Life Club, Kappa
Pi Class Play.

JOSIE JOHNSON - - Duluth, Minn.
Primary
Y. W. C. A., Country Life Club, Camp
Fire, Women's League.

VIRGINIA JOHNSON - - Fargo, N. D.
Intermediate
Y. W. C. A., Country Life Club,
Women's League.

WINONA JORGENSON - Starbuck, Minn.
Primary
Y. W. C. A., Pi Mu Phi, School Chorus,
Chapel Choir, Praeceptor, Camp Fire,
W. A. L. Pep Squad.

DENA KNUTSON - - Benson, Minn.
Primary
School Chorus, Chapel Choir, Radio Club.

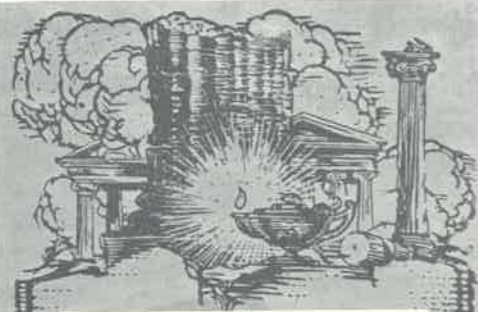
EFFIE KNUTSON - - Warren, Minn.
Primary
Y. W. C. A., Country Life Club, School
Chorus, Women's League.

MARIE KRIER - - Callaway, Minn.
Upper Grade
Country Life Club, Women's League,
W. A. L.

ANNA KUEHN - - Arthur, N. D.
Upper Grade
Y. W. C. A., Althaia, Art Club, Women's
League.

MARIAN KUGLER - Fairmount, N. D.
Intermediate
Gamma Nu, Chapel Choir.





SOPHOMORES



THERESA LEE - - Halma, Minn.
Intermediate
 Y. W. C. A., Country Life Club, School
 Chorus, Chapel Choir, Women's League.

GUNVALD LELAND - - Detroit Lakes, Minn.
Upper Grade
 Y. M. C. A., Football, Track.



RICHARD LOWRIE - - Fergus Falls, Minn.
Upper Grade
 Y. M. C. A., Country Life Club, Class
 Play, Football.

CLARE LUND - - Thief River Falls, Minn.
Upper Grade
 Y. W. C. A., W. A. L.



MARGARET LUNDEEN - - Fargo, N. D.
Intermediate

ELAINE MAGNUSON - - Moorhead, Minn.
Intermediate
 School Chorus, Women's League.



THELMA MALAND - - Marietta, Minn.
Intermediate
 Y. W. C. A., School Chorus, Chapel
 Choir, Radio Club, Art Club, Women's
 League.

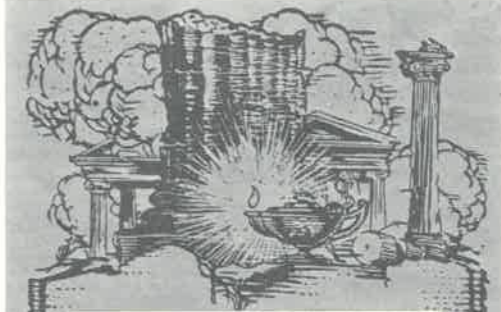
IDELL MALME - - Halstad, Minn.
Upper Grade
 W. A. L., Women's League, Y. W. C. A.,
 Country Life Club, School Chorus,
 Chapel Choir, Radio Club, Art Club,
 Camp Fire.



FLORENCE C. MATHIESEN Fergus Falls, Minn.
Primary
 Art Club,

ALICE MERGENTHAL - Hillsboro, N. D.
Music
 Pi Mu Phi, School Chorus, Chapel Choir,
 Orchestra.

SOPHOMORES



HENRIETTA MIETHKE - - Crookston, Minn.
Intermediate
 Praeceptor, French Club, Pep Squad,
 School Chorus, Chapel Choir, Camp Fire,
 Women's League, W. A. L.

MABEL MORTENSON - - Fergus Falls, Minn.
Art
 Lambda Phi Sigma, Praeceptor, Art Club,
 Camp Fire.



ALICE MULLEN - - Moorhead, Minn.
Intermediate
 Women's League, Art Club, Camp Fire,
 W. A. L., Country Life Club.

MARY MURRAY - - Lancaster, Minn.
Upper Grade
 Y. W. C. A., Country Life Club,
 Women's League.



MYRTLE NELSON - - Fargo, N. D.
Intermediate

HATTIE NESS - - Clarissa, Minn.
Music-Intermediate



GLADYS NISSEN - - Mahnomen, Minn.
Intermediate
 Y. W. C. A., Country Life Club, School
 Chorus, Women's League.

HAZEL O'DAY - - Moorhead, Minn.
Primary
 Athletic Board of Control, Pep Squad,
 Kappa Pi, Monogram Club, W. A. L.



ESTHER OLSON - - Laurel, Minn.
Intermediate
 Y. W. C. A., Y. W. C. A., Cabinet,
 Country Life Club, School Chorus, De-
 bating, Women's League.

SOPHIE OLSON - - Elbow Lake, Minn.
Intermediate
 Y. W. C. A., Woman's League.



SOPHOMORES



ALMA PETERSON - - Ashby, Minn.
Upper Grade
Y. W. C. A., Country Life Club, MiSTiC,
Women's League.



AMANDA PETERSON - Twin Valley, Minn.
Intermediate
Camp Fire.



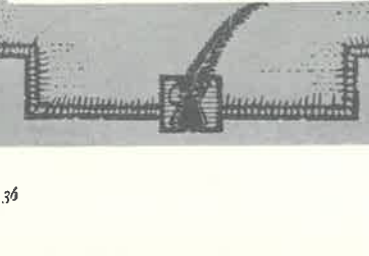
DOROTHY PETERSON - Crookston, Minn.
Intermediate
Y. W. C. A., School Chorus, Camp Fire,
Women's League, W. A. L.



GLADYS PETERSON - Newfolden, Minn.
Primary
Women's League.



HELEN PETERSON - Moorhead, Minn.
Primary
Country Life Club, W. A. L.



IONE PETERSON - - Crookston, Minn.
Upper Grade
Gamma Nu, School Chorus, Chapel
Choir, Pres. French Club, Student Council,
W. A. L.



IRENE PRISKE - - Vergas, Minn.
Primary
Y. W. C. A., Country Life Club, Camp
Fire.

NELLE RECK - - Mahnomen, Minn.
Upper Grade
Gamma Nu, French Club, Pep Squad,
Camp Fire, Student Council.

AGNES RENNER - Pelican Rapids, Minn.
Upper Grade
Country Life, Club, Art Club, Camp
Fire.

LAWRENCE RINGDAHL - Milnor, N. D.
Physical Education
Owls, Pres. Delta Sigma, "M" club, Football,
Track, Student Council, Male
Chorus.

SOPHOMORES



VALBORG RUNSVOLD - - Fargo, N. D.
Primary
Gamma Nu, School Chorus, Dramatic
Club, Kappa Pi, Praeceptor, Class Play.



LEONA SAATOFF - - Waubun, Minn.
Primary
Women's League.



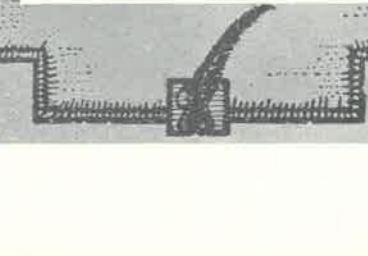
OLGA SANDIE - Moorhead, Minn.
Primary



MYRTLE SANDERS - Montevideo, Minn.
Upper Grade
Y. W. C. A., Lambda Phi Sigma, Country
Life Club, Art Club, Camp Fire.



DELLA SHACKLEFORD - Marietta, Minn.
Intermediate
Y. W. C. A., School Chorus, Chapel
Choir, MiSTiC, Radio Club, Art Club,
Women's League.



LYDIA SCHWANDT - Odessa, Minn.
Art
Y. W. C. A., Pi Mu Phi, Chapel Choir,
Pres. Country Life Club, School Choir,
Art Club.

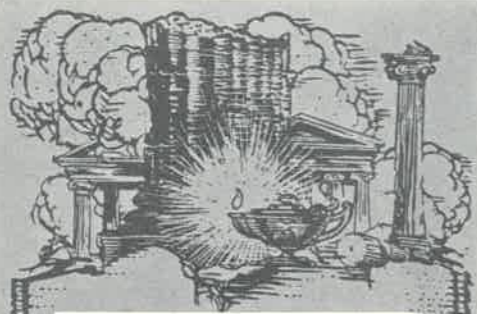


LUELLA SCRIBBENS - Dilworth, Minn.
Intermediate
Pi Mu Phi, Camp Fire, Women's
League.

BEATRICE SHELLAND - Pelican Rapids, Minn.
Primary
Camp Fire, Dramatic Club, Women's
League.

CECILIA SLETTEN - Fargo, N. D.
Intermediate
School Chorus, Women's League, W. A. L.

RALPH SMITH - - Moorhead, Minn.
Physical Education
Delta Sigma, "M" Club, Male Chorus,
Debating, Alpha Psi Omega, Praeceptor,
Dramatic Club, Student Council, Football.



SOPHOMORES



RUBY E. SMITH - - - Lancaster, Minn.
Primary
Vice Pres. Sophomore Class, Pi Mu Phi,
School Chorus, Chapel Choir, Pep Squad,
Praeceptor.



RUBY M. SMITH - - - Spooner, Minn.
Intermediate
Country Life Club, Camp Fire, W. A. L.



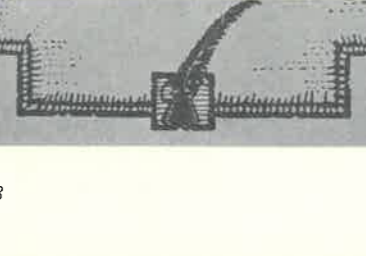
RUTH SMITH - - - Lancaster, Minn.
Primary
Pi Mu Phi, School Chorus, Chapel Choir,
Praeceptor, Pep Squad.



GLADYS STAUNING - - - Beltrami, Minn.
Intermediate
Country Life Club, School Chorus, Chapel
Choir.



STELLA STENERSON - - - Halstad, Minn.
Intermediate
Country Life Club, Women's League.



LILLIAN STEVENSON - - - Felton, Minn.
Intermediate
Y. W. C. A., Country Life, Camp Fire,
Women's League, W. A. L.

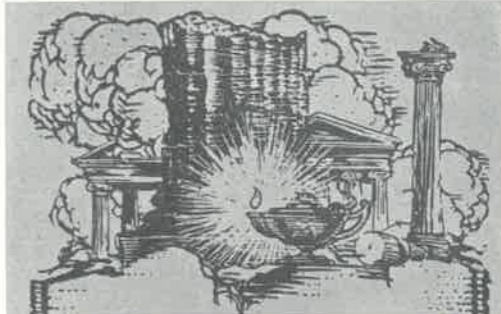
MYRA STOCKDALE - - - Fargo, N. D.
Primary
Gamma Nu, W. A. L.

BERNICE STOLTZ - - - Grafton, N. D.
Upper Grade
Lambda Phi Sigma, Art Club.

CORA STRAND - - - Audubon, Minn.
Primary
Pres. W. A. L., Y. W. C. A., Athletic
Board of Control, Student Council, Mono-
gram Club, Women's League.

ELSIE SULCUT - - - Fargo, N. D.
Upper Grade
Country Life Club, Camp Fire.

SOPHOMORES



ELEANOR SWANSON - - - Fergus Falls, Minn.
Primary



SELINE SWENSON - - - Badger, Minn.
Primary
Camp Fire.



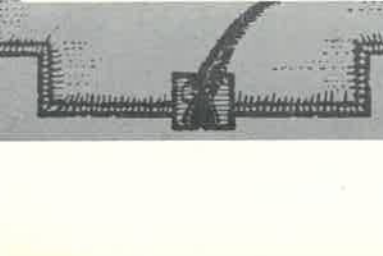
MAI TANGEN - - - Menahga, Minn.
Rural
Y. W. C. A., Country Life Club, Pep
Squad, Camp Fire, W. A. L.



ELVIRA TOWNSEND - - - Moorhead, Minn.
Upper Grade
School Chorus, Chapel Choir, Althaia,
Radio Club.



EMMA TURNBLAD - - - Detroit Lakes, Minn.
Upper Grade
Class Play, Dramatic Club, Camp Fire,
Chapel Choir, School Chorus.



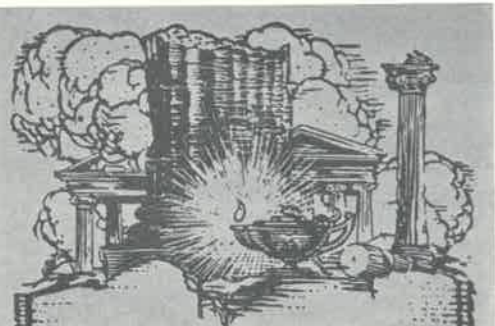
MARIE TURPEN - - - Kennedy, Minn.
Upper Grade
Camp Fire.

SELMA VARHUS - - - Marietta, Minn.
Upper Grade
Pi Mu Phi, School Chorus, W. A. L.,
Y. W. C. A.

SYDNEY WADLEIGH - - - Evansville, Minn.
Upper Grade
Class Play, MiSTiC, Y. M. C. A., Coun-
try Life Club.

WELTHA WALTERS - - - Moorhead, Minn.
Intermediate

HAZEL WEISHAIR - - - Eagle Bend, Minn.
Kappa Pi, Camp Fire.



SOPHOMORES



SEIDA WESTERSON - - - Hallock, Minn.
Primary
School Chorus, Camp Fire, Women's League, W. A. L.



LUCILLE WESTOVER - - - Glenwood, Minn.
Upper Grade



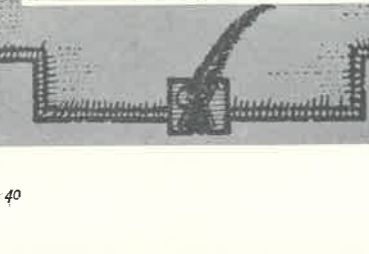
MABEL WICKUM - - - McIntosh, Minn.
Primary
Y. W. C. A.



DELA WILKEN - - - Brandon, Minn.
Intermediate



MARIE WERTZ - - - Staples, Minn.
Primary
Country Life Club.



ALBERT ZECH - - - Detroit Lakes, Minn.
Physical Education
Owls, Pres. Sophomore Class, Delta Sigma, "M" Club, Debating, MiSTiC, Praeceptor, Student Activity Fee Comm. Dramatic Club, Class Play, Executive Senate, Football, Track, Baseball.

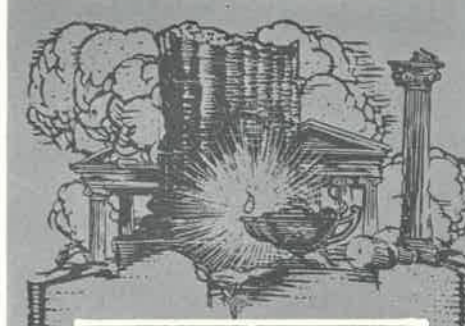
STELLA AAKER - - - Minnewaukan, N. D.
Primary
Camp Fire.

HELEN BECK - - - Grandin, N. D.
Intermediate
Camp Fire.

MRS. B. E. BENSON - - - Moorhead, Minn.
Upper Grade
Lambda Phi Sigma.

GEORGE EDWARDS - - - Moorhead, Minn.
Physical Education
Delta Sigma, "M" Club, Male Chorus, Men's Glee Club, Football, Basket-Ball, Baseball, Track.

SOPHOMORES



CORA EIDEM - - - Marietta, Minn.
Intermediate
Y. W. C. A., Country Life Club, Monogram Club for Women, Women's League, W. A. L.



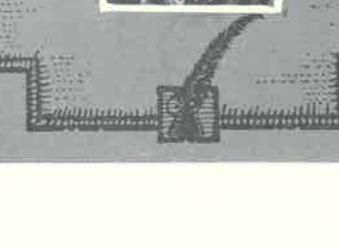
ELLA JOHNSON - - - Lake Park, Minn.
Intermediate
Women's League, W. A. L., Monogram Club.



ROSE PETERSON - - - Moorhead, Minn.
Intermediate
Camp Fire.



ESTHER POSSEHL - - - Felton, Minn.
Intermediate

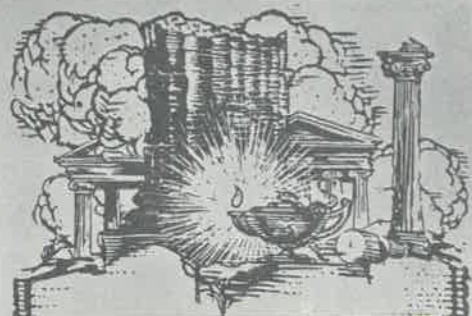


AMY ROGNLIE - - - Halstad, Minn.
Primary
Y. W. C. A., Country Life Club, Pep Squad, Camp Fire, Women's League, W. A. L.



EDITH SAMMONS - - - Medicine Bow, Wyo.
Upper Grade
Camp Fire, Lambda Phi Sigma

EVA SONG - - - Rothsay, Minn.
Primary
Gamma Nu, School Chorus, Chapel Choir, Pep Squad, Women's League.



FRESHMEN



ACKERMAN, BERTHA - Parkers Prairie
 ANDERSON, CLARA - Starbuck
 ANDERSON, EVELETH - Rollag



ANDERSON, VIOLET - Wylie
 BENDER, PEARLE - Hawley
 BERG, GLADYS - Chokio



BERNSTROM, PAUL - Lancaster
 BESTICK, JEANETTE - Detroit Lakes
 BIRD, MILDRED - Detroit Lakes



BJORNRUD, ANNA - Climax
 BLAHA, EVELYN - Wadena
 BUGBEE, LYLE - Wendell



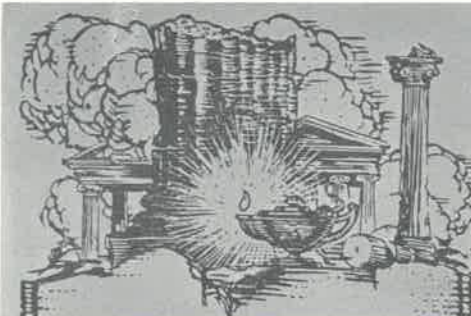
BURHANS, JULIA - Penney
 BURROWS, GLEE - Breckenridge
 COOK, ILA - Fargo, N. D.



COSTAIN, JOHN - Moorhead
 DAHL, EVELYN - Coleraine
 DAY, RUTHE - Hitterdal



FRESHMEN



DUGSTAD, RUBY - Moorhead
 EASTLAND, LERLOWE - Henning
 ECKMANN, VIVIAN - Hendrum



EIDE, CORINNE - Moorhead
 ENGELSTAD, HILDA - Nielsville
 ERAKER, HELMER - Winget



ERICKSON, ALLEN - Doran
 FLEMING, MARGARET - Breckenridge
 FRIDLUND, VICTOR - Moorhead



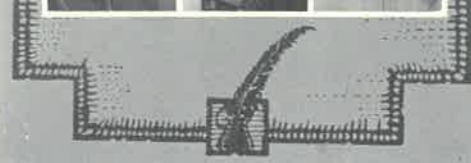
GEBHART, CLARA - Wahpeton, N. D.
 HAGEN, CAROL - Roseau
 HALLSTROM, LILLIAN - Bejou

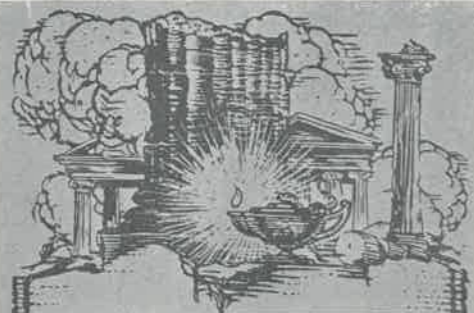


HALVORSON, GENEVIEVE - Lisbon, N. D.
 HALVORSON, GERTRUDE - Warren
 HANSON, ALICE - Watson



HEGLAND, HELEN - Roseau
 HOLT, BERTHA - Alvarado
 HORN, CORDULA - Borup





FRESHMEN



HOUSKE, EUNICE - - - Halstad
 HVIDING, LUELLE - - - Hendrum
 JOHNSON, ANNA - - - Lancaster



JOHNSON, EDGAR - - - Detroit Lakes
 JOHNSON, HAROLD - - - Melby
 JOHNSON, MELVIN - - - Wheaton



JOHNSON, MYRTLE - - - Kratka
 KILTIE, MILDRED - - - Beltrami
 KITTELSON, ALYCE - - - Hitterdal



KNUTSON, MILDRED - - - Ulen
 LARSON, KEITH - - - Campbell
 LARSON, KENNETH - - - Campbell



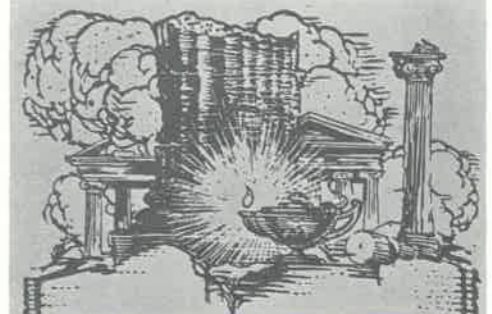
LEE, FLORENCE - - - Hanska
 LOKEN, JEANETTE - - - Rosholt, S. D.
 LUNDQUIST, AMY - - - Graceville



LYSENG, GLADYS - - - Hitterdal
 MEILICKE, RUTH - - - Fargo, N. D.
 MONSON, ELAINE - - - Mahnomon



FRESHMEN



MONSON, HERBERT - - - Climax
 MOSER, EDNA - - - Humboldt
 MULLEN, HOWARD - - - Campbell



MURRAY, BLANCHE - - - Lancaster
 NESS, ELLA - - - Clarissa
 NYGAARD MARY - - - Halstad



OMAN, LAILA - - - New York Mills
 OMDAHL, GLADYS - - - Halstad
 ORAAS, TELFORD - - - Clarkfield



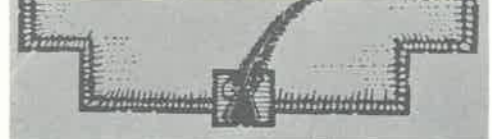
PETERSON, DORIS - - - Vergas
 PETERSON, MYRTLE - - - Hendrum
 PICHT, HELEN - - - Orleans



POTTER, EVA - - - Wheaton
 RASMUSSEN, LAURA - - - Badger
 REDLINGER, ANNA - - - Breckenridge



REGIMBAL, DOROTHY - - - Argyle
 RENNA, BELINDA - - - Fertile
 RICHMAN, EVA - - - Minneapolis





FRESHMEN

RONINGEN, MARY - - - Nielsville
 ROWE, EDITH - - - Melrose
 RUEBKE, LUCILLE - - - Dent

RYDSTROM, CLARA - - - Fargo, N. D.
 SHAFFER, VIRGIL - - - Campbell
 SHERBROOKE, BESSIE - - Pelican Rapids

SCHULSTAD, CHRISTIAN - - - Gary
 SIMSON, ARTHUR - - - Wheaton
 SKISTAD, LILLIAN - - - Elizabeth

SORUM, MARTHA - - - Barnesville
 TAYLOR, MARGARET - - - Garrison, N. D.
 THOEN, LENORE - - - Felton

THORSON, VALBORG - - - Flom
 TOPSLEY, ALICE - - - Climax
 VINZ, LELAND - - - Frazee

WICK, MURIEL - - - Pelican Rapids
 WINDAHL, ESTHER - - - Newfolden
 YOUNG, GENEVIEVE - - - Clinton

FRESHMEN

BERHOW, ALICE - - - Fertile
 CHILTON, LUCILLE - - - Mahnomen
 DAVIS, EDITH - - - Detroit Lakes

ERICKSON, THELMA - - - Moorhead
 GLUDT, ALBERT - - - Dent
 HOLECEK, MINNIE - - - Breckenridge

JENSEN, THORVALD - - - Newfolden
 JONES, GERTRUDE - - - Breckenridge
 KRAUSE, LORAINNE - - - Detroit Lakes

KRETZSCHMAR, ALICE - - - Frazee
 LEE, ARDIS - - - Borup
 LUCKEN, CHRISTINE - - - Erskine

MELINE, MARGARET - - - Halstad
 RANES, OLIVE - - - Fargo, N. D.
 REKEDAL, PETRA - - - Alexandria

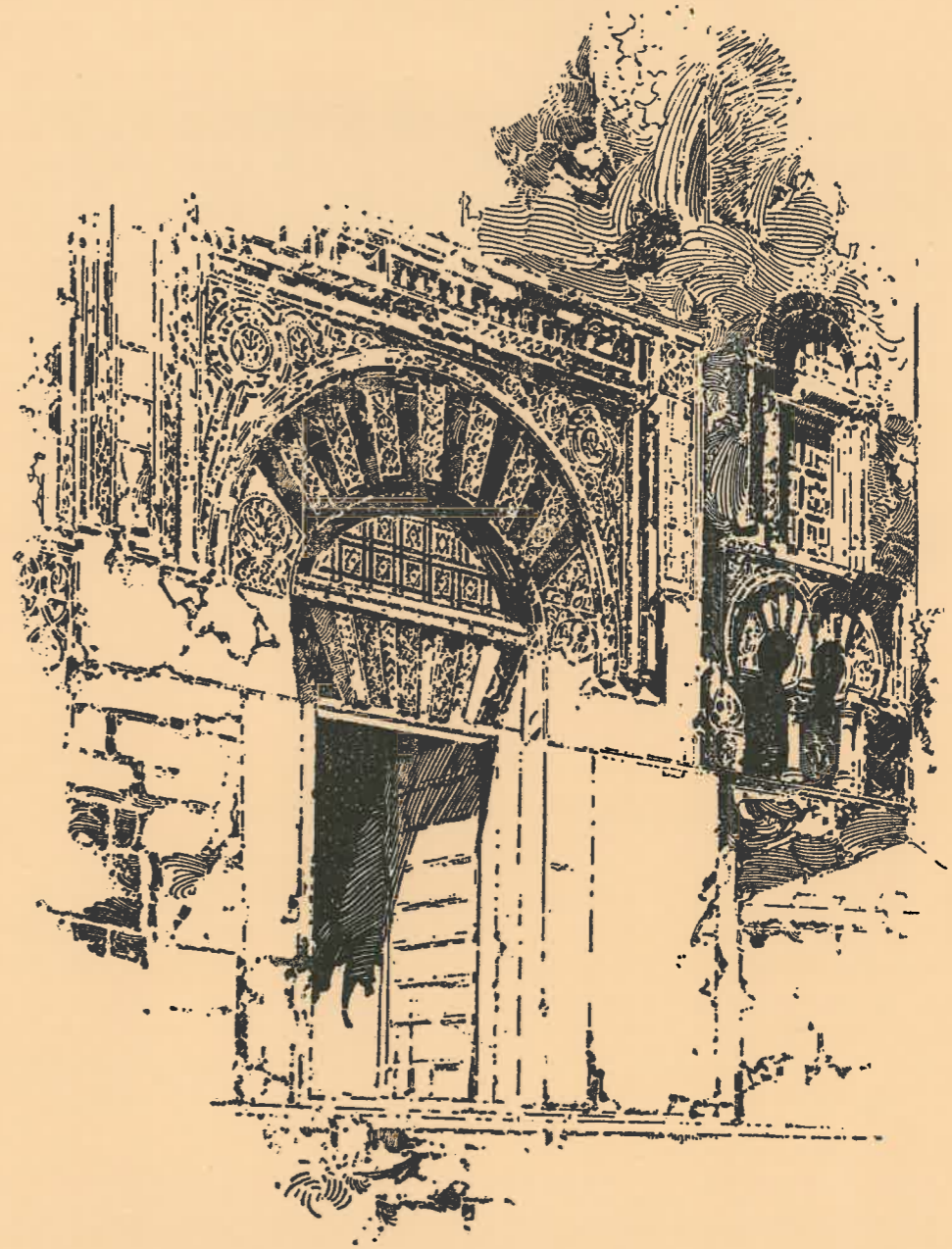
ROBINSON, MARY - - - Mapleton, N. D.
 SANDO, BEATHA - - - Starbuck
 SUNDSTAD, ANNA - - - Perley



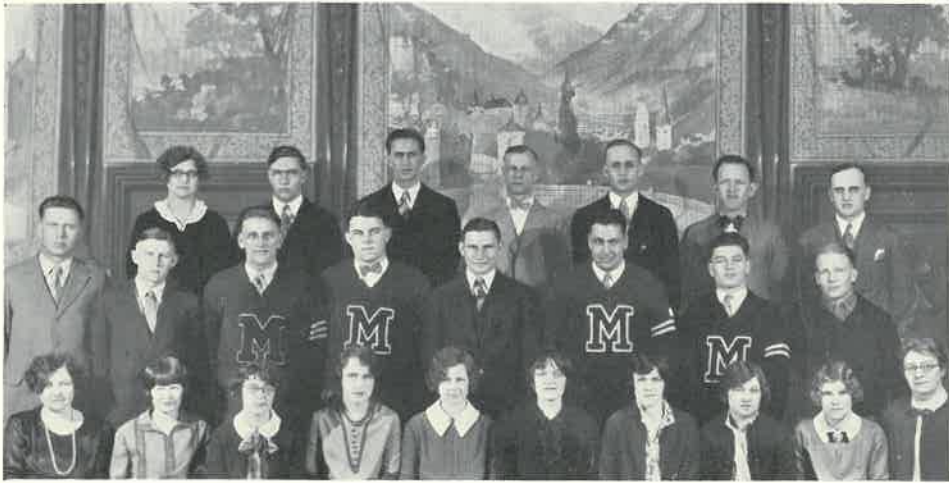


FRESHMEN

DITZLER, EDYTHE	- - -	Richville
GOTHRIDGE, DANIEL	- - -	Fargo, N. D.
OLRUD, FRANCES	- - -	Fargo, N. D.
PETERSON, FLORENCE	- - -	Moorhead
WESTBERG, CHESTER	- - -	Moorhead
YOUNG, GLADYS	- - -	Middle River



Organizations



Upper row: E. Evenson, M. Syverson, G. Simson, Mr. Christensen, H. Sand, R. Smith, Mr. Hamrin.
 Middle row: A. Simson, W. Burton, J. Erickson, B. Townsend, C. Nemzek, L. Ringdahl, A. Zech, A. Baldwin.
 Bottom row: R. Lyttleton, F. Gregerson, H. I. Hegland, N. Reck, I. Hagen, V. Mero, A. Godfrey, G. Holm, J. Howie, Miss Bieri.

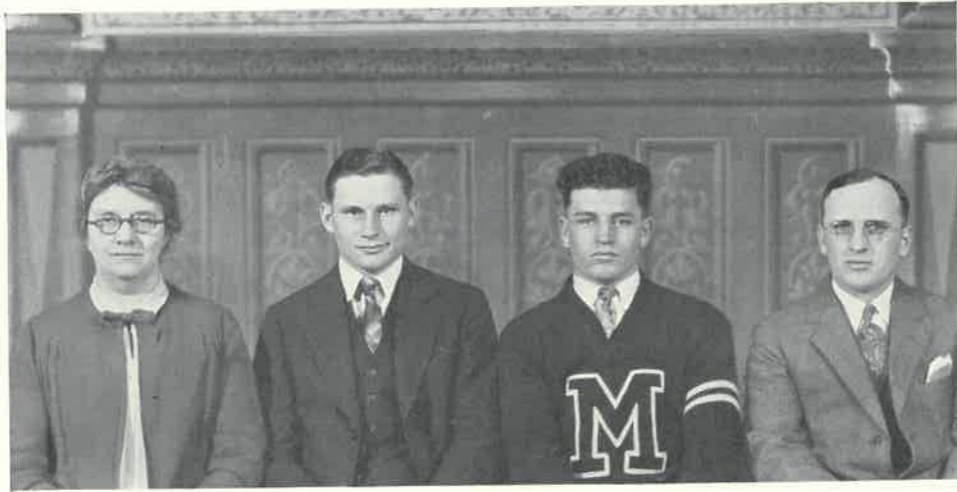
THE STUDENT COUNCIL

THE Student Council of Moorhead State Teachers' College was first established in the autumn of 1926. It is an outgrowth of student interest and faculty promotion. It has performed its greatest function in connection with social life in the college, having general charge of school parties and dances, and having the work of creating the social calendar for each term. The Council has also been active in affairs concerning commencement. Under the direction of the Council a number of special events were staged in 1927 during commencement week. A number of the events are to be annual affairs.

Few attempts have been made to enter the administrative and disciplinary aspects of college life, and these are fields that the organization will enter as its powers grow. The Student Council must involve in its own manner, slowly and surely, until all the students will feel that they are indeed a part of the living campus. If its actions are soberly controlled, it will be a great power for good relationships in the College.

The officers for 1927-1928 are:

CLAUDE NEMZEK	-	-	-	-	-	President
IDA HAAGENSON	-	-	-	-	-	Secretary



THE EXECUTIVE SENATE

Miss M. Bieri. C. Nemzek (Chairman), A. Zech, Mr. S. A. Hamrin.



THE ATHLETIC BOARD OF CONTROL

Upper row: Coach A. J. Nemzek, Miss McKellar, Miss Gibbon, M. Hanson, Mr. Kise, C. Nemzek.
Bottom row: A. Zech, H. O'Day, C. Strand, L. Hall, W. Burton.



Upper row: Harold Sand, Arthur Simson, Claude Nemzek.
Bottom row: Albert Zech, Mr. Christensen, Mr. Murray.

STUDENT ACTIVITY FEE COMMITTEE

THE Student Activity Fee Committee is an appropriation group composed of three faculty members, the class presidents, and the president of the Athletic Board of Control. This group apportions funds to the various all-college organizations. As the name of the committee suggests, the fund is paid by the students for the express purpose of supporting the various all-college functions.

The representatives are:

- | | | |
|---------------------------|---------|----------------------------------|
| MR. CHRISTENSEN, Chairman | - - - - | Appointed by the Faculty |
| MR. MURRAY | - - - - | Appointed by the Faculty |
| CLAUDE NEMZEK | - - - - | Pres. Athletic Board of Control |
| ALBERT ZECH | - - - - | Pres. of the Sophomore Class |
| ARTHUR SIMSON | - - - - | Pres. of the Freshman Class |
| HAROLD SAND | - - - - | Pres. of the Junior-Senior Class |
| MISS JESSIE MCKELLAR | - - - - | Elected by the Students |

CLASS OFFICERS



ROSELLA LYTTLETON - SEC.



HAROLD SAND - PRES.



VIVIAN MERO - V. PRES.

SENIOR - JUNIOR



LOIS HALL - SEC.



ALBERT ZECH - PRES.



RUBY SMITH - V. PRES.



EMMA TURNBLAD - TREAS.

SOPHOMORE



LELAND VINZ - SEC.



ARTHUR SIMSON - PRES.

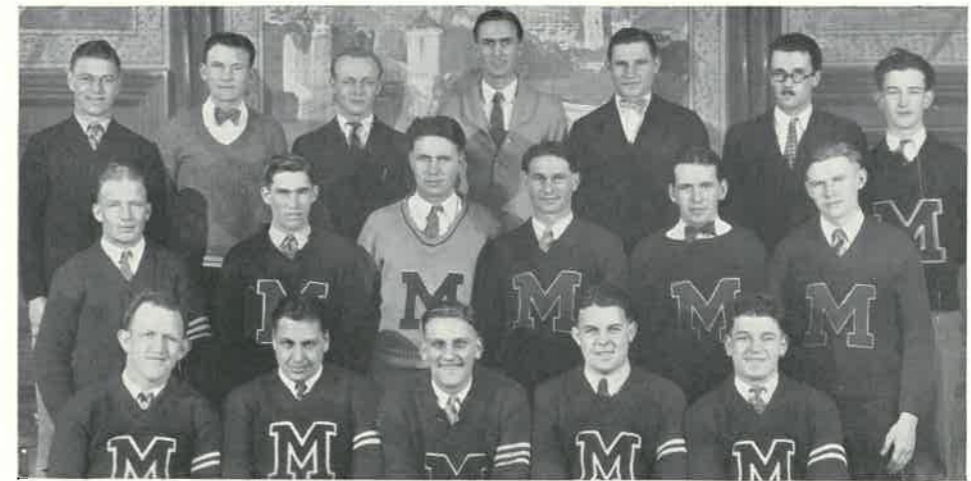


EDGAR JOHNSON - V. PRES.



ALLEN ERICKSON - TREAS.

FRESHMAN



MEN'S "M" CLUB

Upper row: G. Edwards, V. Fridlund, T. Oraas, G. Simson, C. Nemzek, J. Bestick, F. Bordsen.
Middle row: A. Baldwin, V. Anderson, A. Simson, F. Nemzek, L. Vinz, W. Burton.
Bottom row: R. Smith, L. Ringdahl, J. Erickson, B. Townsend, A. Zech.



THE MONOGRAM CLUB

Upper row: H. O'Day, M. Hanson, M. Hvidsten, E. Johnson.
Bottom row: E. Nygaard, L. Hall, C. Strand.

ALPHA CHAPTER



THE honorary educational fraternity, Lambda Phi Sigma, was organized in February, 1924. The selection of members is made on the basis of general scholarship, qualities of character and ability of leadership, professional attitude, teaching ability, and promise of growth in the profession. Members are admitted at the end of each quarter.

Lambda Phi Sigma stands for true method in the art of teaching and sincere efforts in professional attainment.

OFFICERS FOR 1927-1928

RHODA MALAND	- - - - -	President
HELEN VIGEN	- - - - -	Vice-President
ELMA KARLSTROM	- - - - -	Treasurer
IVY BRANDT	- - - - -	Corresponding Secretary
EVELYN JOHNSON	- - - - -	Recording Secretary
LOIS PENNIE	- - - - -	Keeper of the Records

MEMBERS ADMITTED

May 22, 1927

ESTHER G. LARSON	EVELYN JOHNSON	HELEN GILMER
JULIA CLAUSEN	HELEN MALVICK	LUCILLE GEORGE
MERLE SHERMAN	MARIE ANDERSON	MABEL EICHMILLER
MARILLA C. DODDS	HILDA SORKNESS	MARIE CARLSON
JOYCE E. JOHNSON	GERTRUDE ESPELAND	OLE R. SANDE
ADELINE SMITH		LOIS STOCKDALE

July 14, 1927

THEODORE WANTKE	BETH PETERSON	MARY K. COLLITON
M. ALICE IDE	HELEN VIGEN	WINNIFRED FROEHLICH
	ELSA KRABBENHOFT	

November 19, 1927

DOLORAS SPAULDING	IRENE CARLSON
MYRTLE SANDERS	LAURA SIMONSON

February 25, 1928

MYRTLE BENSON	IDA HAAGENSON	EDITH SAMMONS
FLORENCE G. DAVIS	ENGA LUND	BERNICE STOLTZ
PHILIP GREND AHL	MABEL MORTENSON	BASIL TOWNSEND

HONORARY MEMBERS

PRES. R. B. MacLEAN	MISS ELLA HAWKINSON	MR. A. M. CHRISTENSEN
MISS GEORGINA LOMMEN	DR. C. P. ARCHER	MR. B. D. MURRAY
	MR. S. A. HAMRIN	



Upper row: J. Howie, M. Turpin, V. Garden, F. Davis.
Bottom row: E. Olson, A. Kuehn, I. Malme.

Y. W. C. A.

THE Young Women's Christian Association was organized on this campus in 1907. The purpose of the organization is to maintain a high Christian standard of living and to promote a spirit of friendliness among the young women of the College. The "Ask Me" committee met, trains, conducted campus tours and with the Y.M.C.A. held a "Get Acquainted Party" the first week of school. In addition to the regular devotional meetings a candlelight service, matinee frolics, and the adding of cheering touches to the Y. W. room were activities sponsored by the organization. Florence Davis and Jean Howie represented the College at the conference of the Young Women's Association held at Lake Geneva, Wisconsin, during the summer. Harold Sand represented the Y.W.C.A. and Y.M.C.A. at the International Convention held at Detroit, Michigan, in December.

OFFICERS

LAURA SIMONSON	- - - - -	President
FLORENCE DAVIS	- - - - -	Vice-President
IDELL MALME	- - - - -	Secretary
VIOLET GARDEN	- - - - -	Treasurer

COMMITTEE CHAIRMEN

MARIE TURPIN	- - - - -	Undergraduate Representative
JEAN HOWIE	- - - - -	Programs
ANNA KUEHN	- - - - -	Publicity
ESTHER OLSON	- - - - -	Membership
IDA HAAGENSON	- - - - -	Finance
EFFIE KNUTSON	- - - - -	World Service



Upper row: G. Hanson, C. Shulstad, A. Erickson, P. Bernstrom, H. Mullen, L. Bundy.
 Second row: H. Eraker, E. Johnson, L. Bugbee, R. Lowry, J. Dahlquist, H. Johnson, M. Severson.
 Bottom row: Mr. Bridges, S. Wadleigh, H. Sand, H. Houston, P. Grendahl, E. Johnson.

Y. M. C. A.

THE Young Men's Christian Association was formed in the spring of 1925, and has been one of the most active organizations on the campus. It has followed a regular schedule of weekly discussion meetings varied with special programs. They have furnished a Y.M.C.A. room for the use of the men of the College, and have succeeded in promoting a spirit of friendliness throughout the school.

The Young Men's Christian Association has also been very successful in sponsoring Boy Scout work at the College. For the past two years the men of the College have had the opportunity to earn the Scout Master's Certificate.



COUNTRY LIFE CLUB

WE found it in Room 26 of the Main Building—this odd mysterious scroll which was so tightly rolled together and bound with a cottonwood twig. We reverently unbound it and set ourselves to deciphering the hieroglyphics of the scribes who had written it.

After much puzzling we made out the words "Travel Party" and a little later on this significant phrase, "Three T's cancel the whole score!" Ah, yes, we remember now. Unrolling still further we see a great number of people gazing anxiously skyward and the words underneath "Weather-man . . . no snow . . . disappointed Snow Carnival!"

We are beginning to realize that the scroll contains a whole history and our curiosity rises. In one corner is placed a red cross. We are glad they joined that worthy organization!

Then comes a series of pictures which seem to represent gayety and fun. A pantomime, "Grandmother's Dream," is moving slowly across the page. Farther up we see a smiling group labeled "Wild Cats" being tendered a silver loving cup. There must have been a track meet.

Evidently several programs were given, too, for though the script was faint and almost illegible we made out the words, "Mr. Hamrin . . . a talk . . . enthusiasm." Finally at the very top we made out a few brief notes on the organization, its purposes and aspirations.

OFFICERS

<i>President</i>	<i>Vice-President</i>	<i>Secretary</i>	<i>Treasurer</i>
Fall: L. SCHWANDT	D. PETERSON	A. JOHNSON	A. BAUMGARTEN
Winter: M. SYVERSON	P. BERNSTROM	E. BOND	H. HEGLAND
Spring: IDELL MALME	HERBERT MATTSON	IRENE CARLSON	HELEN HEGLAND



Upper row: Barstad, V. Mero, I. Amundson, F. Schroeder, H. Sand, E. Lund, I. Hetland, E. Townsend, H. I. Hegland.
 Bottom row: P. Grendahl, E. Eddy, A. Boyum, F. Gregerson, Miss Gibbon, C. Nemzek, R. Lyttleton, F. Bordsen.

ALTHAIA

OFFICERS

FLORENCE GREGERSON - - - - *President*
 CLAUDE NEMZEK - - - - *Secretary*

THE Althaia Literary Society was reorganized for the year 1927-1928 in the middle of the fall term with Miss Martha Gibbon as the faculty advisor.

Believing that it would prove more practical and enlightening in a modern intellectual sense, the club decided to use its monthly meetings for the study and discussion of modern and contemporary poets and novelists. However, those appearing on the programs as well as those who were the auditors always remembered that the basic interest of the organization was the cultivation and further development of a taste for what is best in the realm of literature whether contemporary or otherwise.

Our programs for the year consisted of discussions of "Trader Horn", "The Cabala", "Bridge at San Luis Rey", and "Old Wives Tales"; we had character reviews and literary criticism of such poets as Edna St. Vincent Millay and Humbert Wolfe.

The members of the organization kept abreast of new books by the attention given to frequent "reviews of the reviews."



Upper row: D. Grugal, F. Gregerson, E. Johnson, A. Zech, C. Weickert.
 Middle row: G. Hanson, E. Evenson, V. Runsvold, F. Nemzek, G. Christensen, E. Rowe.
 Bottom row: J. Howie, E. Turnblad, Miss Tainter, R. Smith, R. Lyttleton.

DRAMATIC CLUB

THE club is composed of those students who have attained an A in Reading and Speech or have given evidence of marked dramatic ability. The club strives to aid in the dramatic personal development of its personnel, to acquaint them with material suitable for school and community play work. The club also strives to aid its members to work out the fundamental problems of staging plays. Some of the chapel programs have been splendid demonstrations of the Dramatic Club's work. Plays staged this year were "Will of the Wisp", "Nevertheless", "The Medicine Show," and "The Pot Boilers."

OFFICERS

RALPH SMITH - - - - *President*
 RUTH TWEETON - - - - *Vice-President*
 EMMA TURNBLAD - - - - *Secretary-Treasurer*
 MISS ETHEL TAINTER - - - - *Director*



Upper row: H. Weishair, E. Johnson, G. Hanson, E. Brady, F. Schroeder, V. Mero.
 Middle row: G. Christenson, H. Johnson, V. Runsvold, E. Lybeck, R. Ellison, M. Erickson, C. Malvey.
 Bottom row: H. O'Day, A. Godfrey, Mrs. Durboraw, L. Hall, J. Howie.

KAPPA PI

OFFICERS

ANNABELLE GODFREY	- - - -	President
LOIS HALL	- - - -	Vice-President
JEAN HOWIE	- - - -	Secretary
HAZEL O'DAY	- - - -	Treasurer
MRS. DURBORAW	- - - -	Advisor

ASSOCIATE MEMBERS

MISS RAINEY MISS WILLIAMS MISS CHRISTENSON

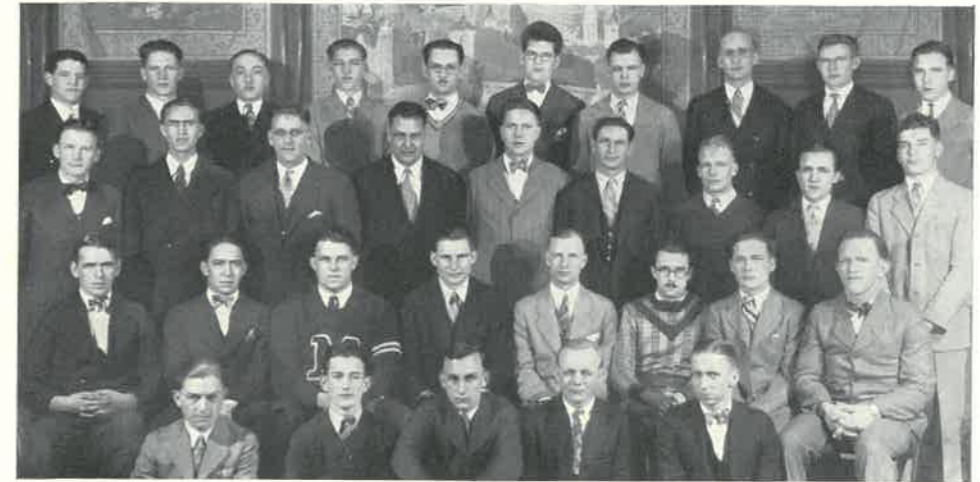


ALTHOUGH the Kappa Pi organization is just five years old it has done much to merit its place as a professional organization in our school. Its membership is composed of girls interested primarily in kindergarten-primary work.

Each year the organization makes a substantial gift to the kindergarten-primary education department in the way of modern school equipment. The money for this gift is raised through various sales during the year.

ACTIVE MEMBERS

EDYTHE BRADY	DOROTHY BETTSCHEN	GENEVA CHRISTENSON
RUTH ELLISON	MARGUERITE ERICKSON	ANNABELLE GODFREY
GRACE HANSON	LOIS HALL	ESTHER HALVORSEN
JEAN HOWIE	EUNICE JOHNSON	EVELYN LYBECK
VIVIAN MERO	CLARA MALVEY	HAZEL O'DAY
HELEN REMLEY	VALBORG RUNSVOLD	LAURA SIMONSON
FREDA SCHROEDER	HAZEL WEISHAIR	LORENE YORK



Upper row: A. Wambach, C. Shulstad, M. Johnson, H. Mattson, H. Preusse, J. Dahlquist, B. Christian, H. Sand, W. Burton, P. Bernstrom.
 Second row: V. Fridlund, G. Simson, H. Erickson, L. Ringdahl, A. Simson, F. Nemzek, A. Baldwin, V. Anderson, A. Zech.
 Third row: L. Vinz, H. Houston, B. Townsend, C. Nemzek, Mr. Christensen, J. Bestick, H. Monson, R. Smith.
 Bottom row: G. Hanson, F. Bordsen, J. Costain, T. Oraas, P. Grendahl.

DELTA SIGMA

THE Delta Sigma Literary Society holds a unique position in the life of the College. The original purpose of this organization has been displaced to a great extent. Nevertheless this organization offers an opportunity for special literary and oratorical abilities. At present the organization carries on the social interests of its members by the various parties that are given throughout the year.

Although the mechanical form of the group has been changed, the original purpose has been kept in mind. This has been made possible by specifically stressing training in public speaking and other forms of personal expression.

Delta Sigma gave a special Lincoln day program at Chapel Assembly, February 9, 1928. This program plus a number of other activities has placed Delta Sigma among the active organizations of the College. Through the associations and activities of the group, there is a true fraternal spirit developed among the men.





Upper row: Mr. Kise, Mr. Sande, H. Sand, W. Burton, A. Erickson, A. Baldwin, P. Grendahl.
 Second row: E. Johnson, G. Simson, H. Erickson, B. Townsend, L. Ringdahl, C. Nemzek, M. Syverson,
 Bottom row: E. Johnson, G. Hanson, F. Nemzek, A. Zech, V. Anderson.

OWLS

MUCH has been done in the past by the Owls to promote friendship among the men of the College. This spirit of brotherhood has also been exercised on and off the campus. The organization has been able to keep the active members and alumni members together spiritually and socially by numerous parties and letters.

Back of the visible part of the organization, one not only sees companionship, friendship, and fraternalism, but also service and scholarship. The order has always maintained that however lofty and inspiring the avowed purposes of a college organization may be, however noble its activities may appear to be, no such society can justify its existence within the school except as it serves the purpose of the institution of which it is a part.

The incorporation of the aims and ideals of the college into the program of the Owls has been one of the purposes of the organization. But there are other functions which the order wishes to achieve. In short it is a group of young men of like pursuits and congenial tastes banded together for companionship and friendship.



Willard Gowenlock



Ruth Tweeton



Frank Nemzek



Edna Hanson



Rosella Lyttleton



Ormenso Bjork



Delia O'Neil



Ula Mae Brown



Benjamin Rosen



Helen Vigen



Oscar Haugh



Ralph Smith

GAMMA NU SORORITY

THE Gamma Nu Sorority, a social organization, was founded in the year of 1905. It began with a membership of ten members. Today, as it nears its 25th anniversary it has an active chapter of twenty-five members and two alumnae chapters, one in the Twin Cities and one in Fargo.

With a growing consciousness of strength and confidence, it rededicates itself to its purposes: higher ideals of morality, broader conceptions of social obligations, high standards of scholarship, and fidelity and co-operation with the ideals and activities of the Moorhead State Teachers College.

FACULTY MEMBERS

MARY C. MOORE

ETHEL B. DURBORAW

FLORENCE BULLARD

CLASS OF 1928

EVELYN LYBECK

EDYTHE BRADY

IONE PETERSON

VIVIAN MERO

RUTH ELLISON

IRENE HAGEN

VALBORG RUNSVOLD

MARIAN KUGLER

FREDA SCHREEDER

NELLE RECK

GRACE HANSON

MYRA STOCKDALE

ROSELLA LYTTLETON

EVA SONG

LORENE YORK

HAZEL JOHNSON

CLASS OF 1929

NELLIE CARLSON

ALICE LUNDGREN

RUTH MEILICKE

RUTH FINDEN

FRANCES BENEDICT

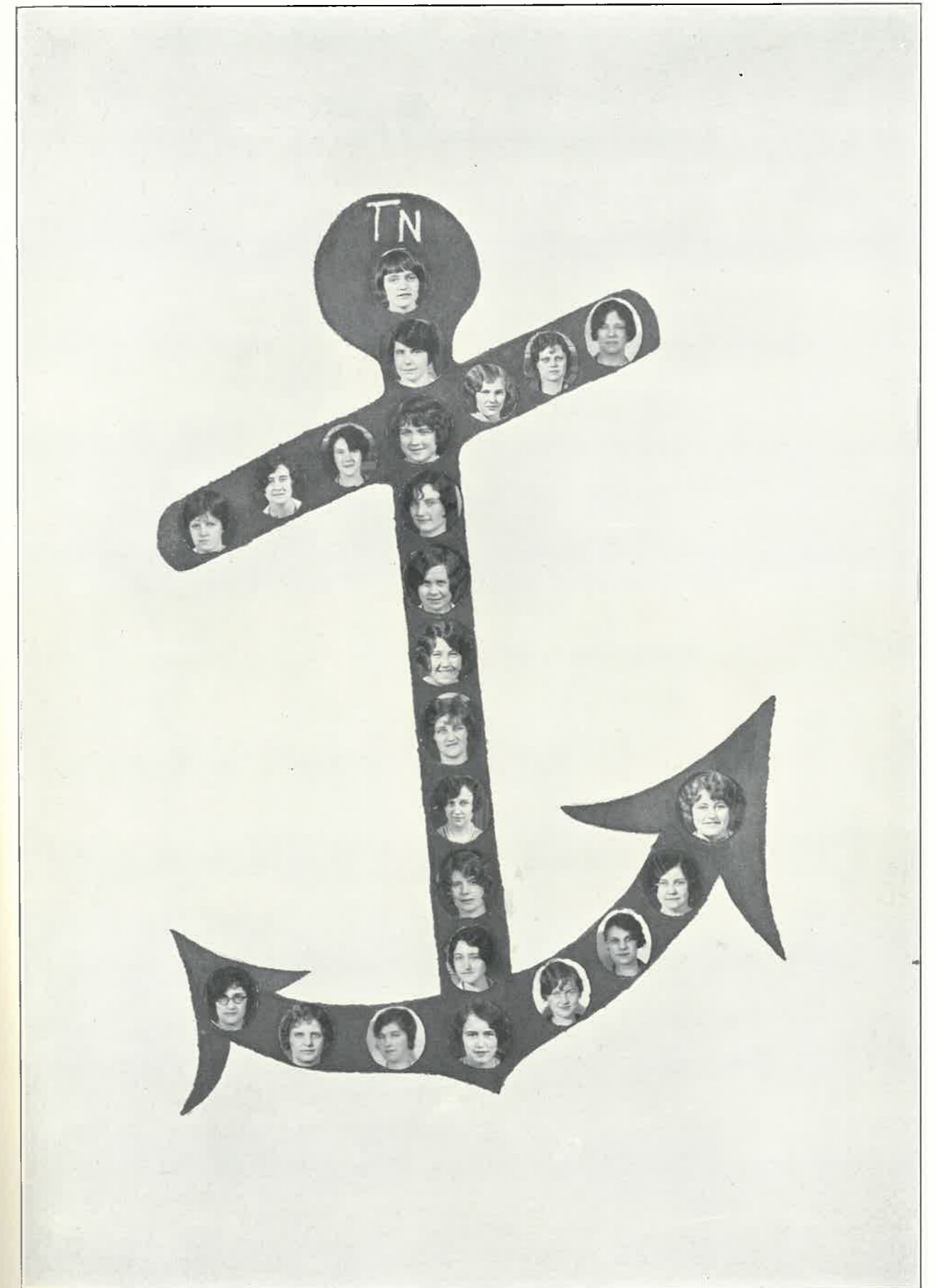
PLEDGES

CLARA RYDSTROM

JEANETTE BESTICK

DOROTHY REGIMBAL

THELMA ERICKSON



PI MU PHI SORORITY

THE Pi Mu Phi Sorority was organized in 1905 as the "Witches", the name being changed to Pi Mu Phi in 1925. The purpose of the organization is to promote the general educational interests of the school. It proposes to show a willing spirit of co-operation in developing the ideals of the school; to establish friendly, helpful relations among its members; and to be of service to the other members of the school.

FACULTY MEMBERS

MATILDA WILLIAMS
RAGNHILD JOHNSON

FLORA FRICK
BLANCHE LOUDON

GRACE GOODSSELL

STUDENT MEMBERS

Class of 1928

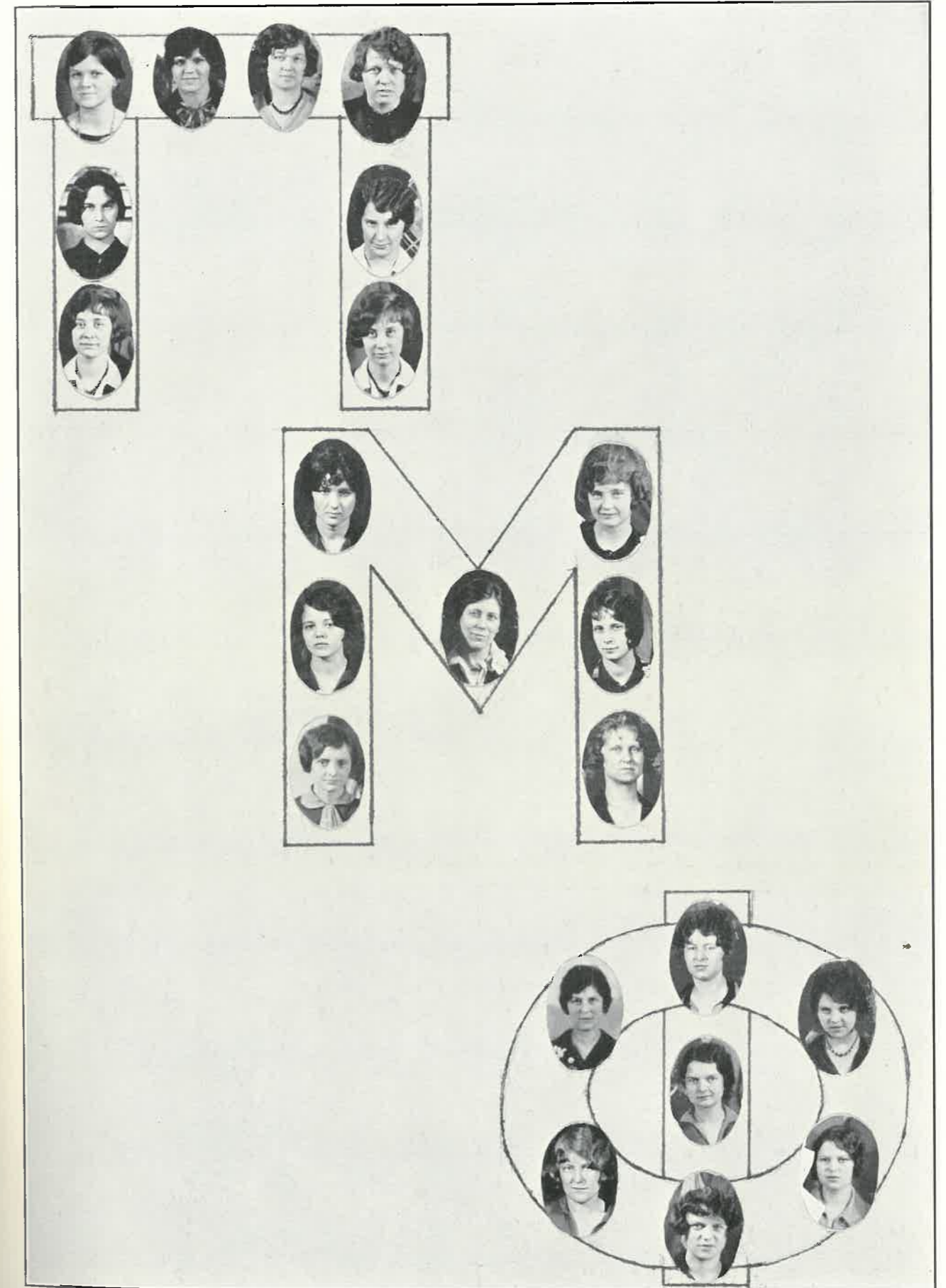
SELMA VARHUS
MARY HANSON
WINONA JORGENSON
IDA HAAGENSON
GERTRUDE HOLM
OCTAVIA ASKEGAARD
RUTH SMITH
RUBY SMITH

ANNABELLE GODFREY
LUELLA SCRIBBINS
MARGARET HVIDSTEN
ALICE MERGENTHAL
MARGUERITE ERICKSON
LYDIA SCHWANDT
LOIS HALL
LOIS BESTIC

Class of 1929

LILLIAN HALLSTROM
CAROL HAGEN
EVELYN BLAHA

CHRISTINE LUCKEN
MARGARET TAYLOR
MARY ROBINSON





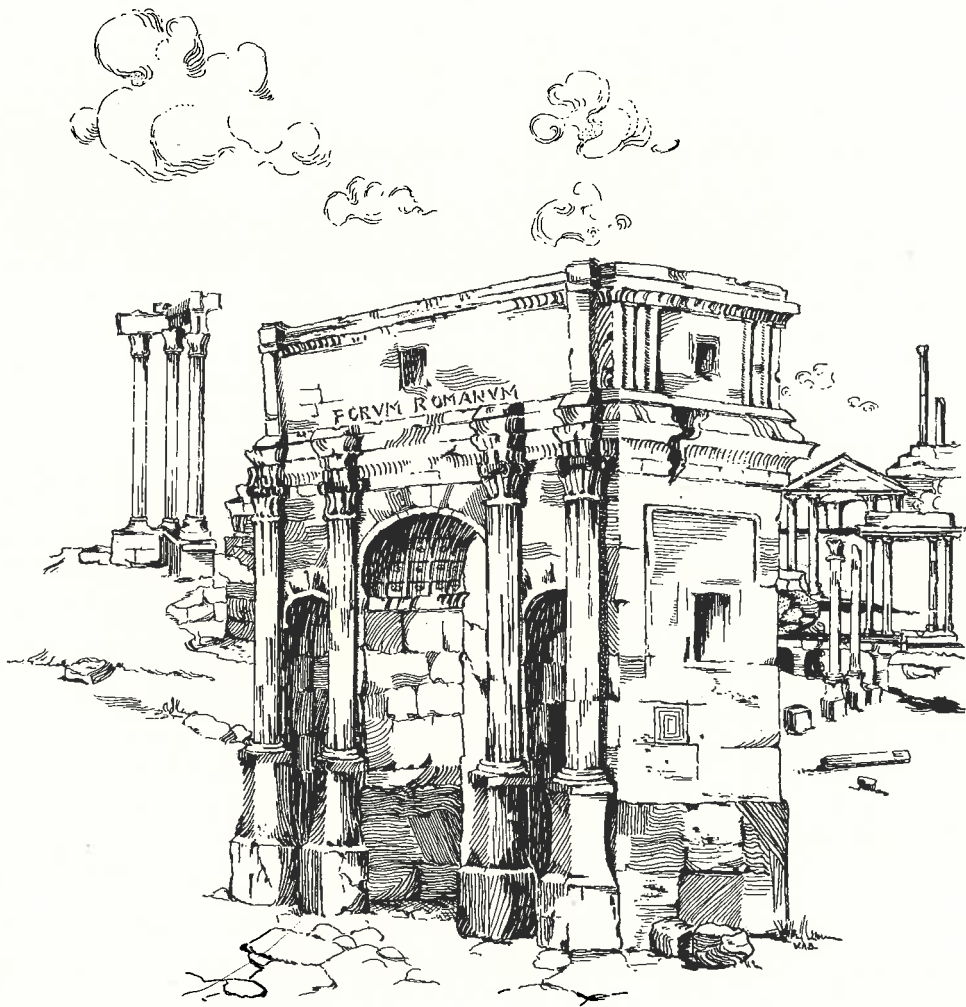
E. Johnson, E. Grina, M. Mortenson, Miss McCarten, L. Schwandt, M. Nelson, E. Carlson, E. Evenson.
M. Sanders, C. Brown, M. Walz, T. Maland, A. Mullen, B. Stolz, E. Lund.
C. Springer, A. Renner, C. Mathieson, D. Shackelford, M. Drinkwine, L. Weltzin, C. Bock.
M. Archer, E. Karlstrom, I. Malme, C. Malvey, M. Stoa.

THE Art Club was organized several years ago for the purpose of enriching the lives of the students through the medium of artistic expression. Each year the club leaves the Art Department some suitable memorial. During the year it aims to bring to the school some things of artistic value. This year it has sponsored art exhibits and procured speakers.

ART  CLUB



Activities



HALL AND CLASSROOM



Mrs. D. Preston, V. Garden, C. Lucken, H. Sand, Mr. A. M. Christensen, V. Anderson, E. Skjonsby, A. Mergenthal, C. Westberg, Mr. D. L. Preston, Director.

ORCHESTRA

UNDER the capable direction of Mr. Preston, the orchestra has appeared publicly on four occasions; first, at the annual Chamber of Commerce banquet at the Comstock Hotel; second, at the Kiwanis Club Ladies' Night banquet; third, at the Congregational Men's Club, at the First Congregational Church of Moorhead; and fourth, at the annual Senior class play at the College Auditorium.

The orchestra has added several interesting new numbers to its repertoire during the year. At present the outlook for next year is favorable. The orchestra is one of the student activities which should grow as the college grows.



Upper row: Mr. D. L. Preston, L. Vinz, K. Larson, J. Bestick, E. Skjonsby, O. Ranes, H. Sand, K. Larson, C. Pike.
 Bottom row: H. Mullen, G. Halvorson, G. Christenson, Mr. A. M. Christensen, Director, I. Malme, A. Mergenthal, V. Anderson.
 Other members of the band are: Mr. W. C. White, A. Wambach, M. Johnson, C. Hagen, H. Killon, C. Westberg, W. Burton.

BAND

THE Band is a new but permanent organization on the Campus. It has made remarkable progress under the capable direction of Mr. Christensen, and also through the keen interest shown by the members and the student body.

Membership has been open to any student having ability to play an instrument or others having the desire to learn to play. The college has purchased several instruments to be used by members of the organization.

The band rehearsals are now scheduled so that they are considered regular classes, and college credit is given to the members.

Regular concerts have been given once a month at the Chapel exercises. The band has also given a number of concerts over the radio, in addition to other functions. The presence of the band at athletic contests during the year has added to the spirit of the college.

The first public concert of the Moorhead State Teachers' College Band was held March 16, 1928, 11 A. M. at Chapel. The program was as follows:

1. Alma Mater - - - - - Gounod
2. Scoutmaster March (Band) - - - Jewell
3. Raggy Trombone (Band) - - - Kiefer
4. Pilgrim's Chorus from Tannhauser - - - Wagner
Brass Quintet
5. Overture "Sincerity" (Band) - - - Barnard
6. The World Is Waiting for the Sunrise - - - Penn
Male Octet
7. Billy Blowhard - - - - - Kottaun
Tuba Solo—EDWARD SKJONSBY
8. King Cotton March (Band) - - - Sousa
9. Spring Song - - - - - Mendelssohn
Clarinet Solo—ARNOLD M. CHRISTENSEN
10. March, "National Emblem" (Band) - - - Bagley



CHAPEL CHOIR

THE Chapel Choir consists of thirty-three women's voices, selected at the beginning of the year by Mr. Preston. They have been well trained, and have given eight Sunday evening concerts at different churches in Fargo and Moorhead.

The year's work terminated in a tour which included the following towns: Detroit Lakes, Frazee, and Perham.

In many ways this year's Chapel Choir is the best to represent the College in public concerts. Never has there been displayed greater willingness to assume the burden of many rehearsals and various obligations in connection with the Choir.



Upper row: C. Shulstad, G. Edwards, Mr. D. L. Preston, L. Vinz, F. Nemzek, E. Johnson.
Bottom row: H. Sand, T. Nemzek, P. Grendahl, A. Erickson, E. Skjonsby, F. Bordsen.

MEN'S CHORUS

WHILE the Men's Chorus is not a sure thing each year at the Moorhead State Teachers' College because of the great demand made upon the time of each male student for athletics, debate, dramatics, etc., this year's group has proven its worth by singing over the WDAY radio station at Fargo on several occasions, appearing at banquets, and assisting the Chapel Choir on the spring tour.

The opening concert of the May Festival was successful in no small way because of the fine spirit of this group.

OFFICERS

PHILIP GRENDAHL	- - - - -	President
ALLEN ERICKSON	- - - - -	Secretary
THEODORE NEMZEK	- - - - -	Librarian
IRENE HAGEN	- - - - -	Accompanist





Upper row: D. Knutson, A. Bradeson, T. Maland, D. Shackelford, R. Meilicke, C. Barsness, E. Townsend, Mr. Preston.
 Bottom row: I. Hagen, F. Lee, L. Bestic, E. Satre, H. Brosvick, L. Miller, H. Ness.

THE RADIO GIRLS



GROUP of thirteen girls interested in music formed an organization in the fall of 1927, for the purpose of representing the College in giving programs over WDAY on the second and fourth Fridays of each month.

Membership in the organization has been limited to sixteen. In order to become a member one must prove his worth as a musician at a special hearing in the presence of the club members.

The club is under the direction of the music director of the College.

OFFICERS

LOIS BESTIC - - - - - President
 THELMA MALAND - - - - - Secretary-Treasurer
 DELLA SHACKLEFORD, Program Director, Publicity Agent
 IRENE HAGEN - - - - - Accompanist



THE ADMIRABLE CRICHTON

By JAMES M. BARRIE

Presented Under Auspices of the Sophomore Class

CHARACTERS

THE EARL OF LOAM	- - - - -	Ralph Smith
HONORABLE ERNEST WOOLLEY	- - - - -	Frank Nemzek
REVEREND JOHN TREHERNE	- - - - -	Harold Preuse
LORD BROCKLEHURST	- - - - -	Richard Lowry
LADY MARY	} Daughters of Lord Loam	} Valborg Runsvold
CATHERINE		
AGATHA		Florence Bell
COUNTESS OF BROCKLEHURST	- - - - -	Elma Karlstrom
A NAVAL OFFICER	- - - - -	Albert Zeck
CRICHTON, the butler	- - - - -	Elroy Johnson
MRS. PERKINS, the housekeeper	- - - - -	Hazel Johnson
MONSIEUR FLEURY, a chef	- - - - -	John Costain
MR. ROLLESTON, Lord Loam's valet	- - - - -	Gordon Hanson
MR. TOMPSETT, the coachman	- - - - -	George Simson
MISS FISHER, Lady Mary's maid	- - - - -	Geneva Christianson
MISS SIMMONS, Catherine's maid	- - - - -	Camille Weickert
MADAMOISELLE JEANNE, Agatha's maid	- - - - -	Edna Bennington
THOMAS, first footman	- - - - -	Ruby Smith
JOHN, second footman	- - - - -	Ruth Smith
TWEENY, a kitchen-maid	- - - - -	Ida Hetland
STABLE-BOY	- - - - -	Sydney Wadleigh
PAGE	- - - - -	Jean Howie

SCENES

ACT I—Garden of Lord Loam, London.
 ACT II—The Island.
 ACT III—The Island Home.
 ACT IV—Home of Lord Loam, London.



Act II—THE ISLAND

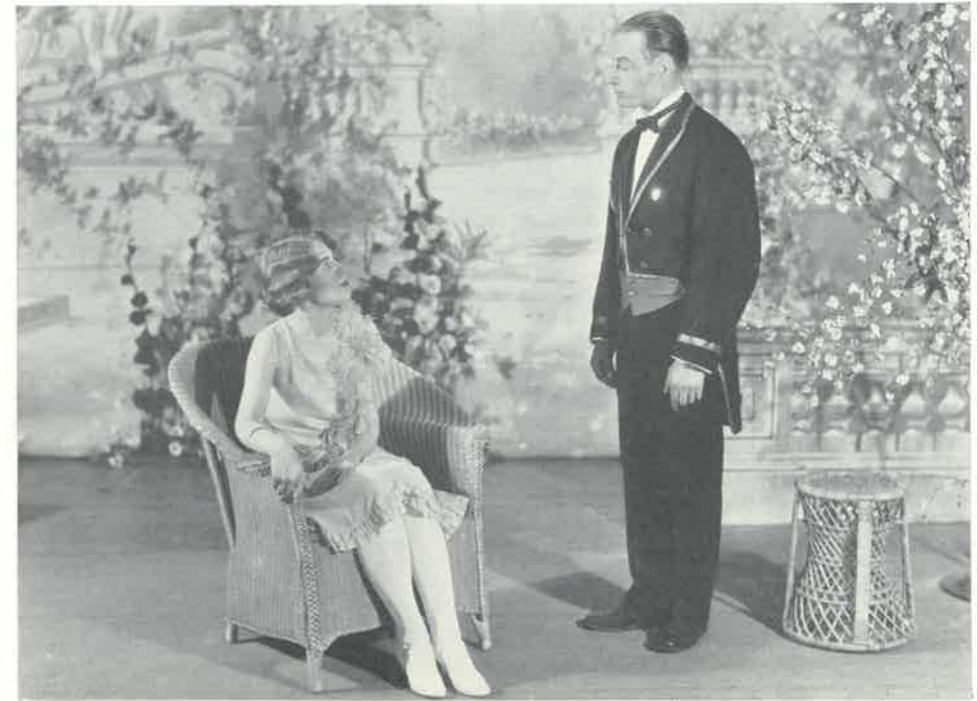
THE CLASS PLAY

THE ADMIRABLE CRICHTON," by J. M. Barrie, was the annual play chosen by the Sophomore class, and was presented on February 18th.

The play is an entertaining drama of English life. The action often moves slowly as it depicts the bored lives of English gentlemen in their homes, but lacks neither subtle humor or depth of feeling throughout the entire play.

The first act is laid in the Garden of the Earl of Loam. The Earl is attempting to appear very democratic by monthly entertaining the servants of his estate, but Crichton, the butler, firmly believes in class distinction in England, and resents strongly this theory of equality. He states, however, that under some conditions, "The same person might not be master and the same persons might not be servants."

The Loam family leaves England for a yacht voyage, but are wrecked on a forlorn island, and because of the inability of the other characters to perform the necessary



Lady Mary and Admirable Crichton

duties, Crichton takes command of the party. He meets with a great deal of opposition at first, but is finally given full authority.

In a strong dramatic scene, Crichton proposes to Lady Mary, the Earl's eldest daughter, and is accepted. However, when the party is rescued, in the last act, Lady Mary finds it impossible to marry this heroic leader because of class distinction, and Crichton, with no digust, but perhaps a few regrets, returns to his previous position—the Admirable Crichton.

Well developed characterization contributed a great deal to the success of the drama, and this was augmented by appropriate costuming and effective lighting.





THE MEDICINE SHOW

Lut'er, Wilson Burton; Dr. Stev'n Vandexter, Elroy Johnson; Giz, Albert Zech.



NEVERTHELESS

A Girl, Camille Weickert; A Burglar, Frank Nemzek; A Boy, Florence Gregerson

ONE-ACT PLAYS

Presented by Dramatic Club

WILL O' THE WISP—By DORIS HALMAN

THE WHITE-FACED GIRL	- - - - -	Geneva Christiansen
THE COUNTRY WOMAN	- - - - -	Bernice Shelland
THE POET'S WIFE	- - - - -	Emma Turnblad
THE SERVING-MAID	- - - - -	Dora Grugal

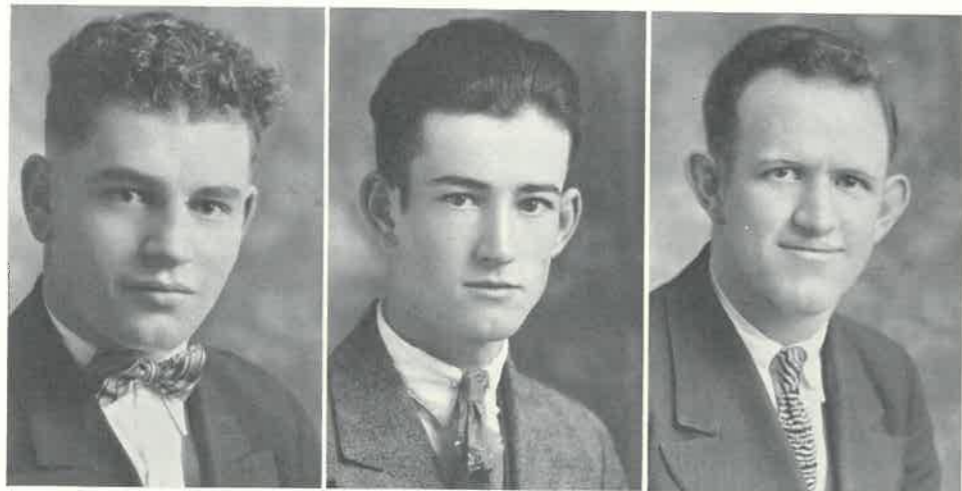
NEVERTHELESS—By STUART WALKER

A GIRL	- - - - -	Camille Weickert
A BOY	- - - - -	Florence Gregerson
A BURGLAR	- - - - -	Frank Nemzek

THE MEDICINE SHOW—By STUART WALKER

LUT'ER	- - - - -	Wilson Burton
GIZ	- - - - -	Albert Zech
DR. STEV'N VANDEXTER	- - - - -	Elroy Johnson





A. Zech

F. Bordsen

R. Smith

FORENSICS

THE 1927-28 debating season proved to be an interesting one from the standpoint of the audiences which attended. The question, that of the protection of capital invested in Latin America, was a timely one, with the eyes of the world focused on Lindbergh's tour of the region in December and January, and with the convening of the Pan-American Congress in Havana early in 1928.

Moorhead S.T.C. again put into the field teams which upheld the reputation which she has had in forensic work during the past several years. Such schools as North Dakota University, St. Thomas, River Falls (Wisconsin) Teachers College, and Jamestown furnished strong competition.

Interest was first aroused in debate when the class in argumentation and debate presented before the chapel assembly the question of whether or not state educational institutions can rightly debar inferior students from their classrooms. This contest afforded the coach and the debate board a chance to see what various students could do under fire.

As a result Esther Olson, Evelyn Carlson, Elroy Johnson, Albert Zech, Ralph Smith, and Francis Bordsen were chosen for the various teams, affirmative and negative. The debate board was made up of Mr. Kise, Mr. Hamrin, Mr. Christensen, Dr. Archer, and Mr. Murray, coach. Inasmuch as the question is one of the major problems in the field of political science, the squad obtained much invaluable criticism and help from Mr. Kise and Mr. Bridges.

NORTH DAKOTA UNIVERSITY

Albert Zech, Francis Bordsen, and Ralph Smith made up the affirmative team which traveled to Grand Forks February 24 to meet Frank Kellogg, Bennie Johnson, and Frank Boozenny in Woodworth Auditorium. After the "battle of the classics," Coach Schrier of the Nodaks said he thought it was an affirmative question. Zech and Bordsen, neophytes, stood up gamely under their first fire.

On March 9 John Hennessey, Jr., William Heaton, and Forrest Boone came to Moorhead and engaged in a logical dispute in which a certain chart of the negative



E. Olson

E. Johnson

E. Carlson

team played a notable part. The M. S. T. C. negative team members were Esther Olson, Elroy Johnson, and Evelyn Carlson. Mr. Kise was chairman of this non-decision contest.

ST. THOMAS

Ralph Smith and Francis Bordsen, accompanied by the coach, made a trip to meet St. Thomas and River Falls on March 15 and 16. Because of a misunderstanding Moorhead was forced to take the negative side a matter of some two hours before the debate, although the men made up an affirmative team. Outside of the competition of a golf instructor who was expostulating on the game to a class, there were no other speakers on the program except the debaters. Bordsen managed to talk as long as his St. Thomas opponent, despite the fact that he was denied the customary Adam's ale. St. Thomas won the decision of a small audience by two votes.

RIVER FALLS S. T. C.

Going on to New Richmond, Wisconsin, the same team met Richard Olson and Marshall Norseng of River Falls before the New Richmond high school assembly and visitors. Every courtesy was extended the Moorhead debaters. The judges' decision was 2-1 in favor of the visiting team from Minnesota. Smith and Bordsen won an audience decision from Thomas Barry and Robert Smith of River Falls in the return contest at Moorhead. Mr. Bridges was chairman of the evening. Miss Lumley entertained for the visiting and the local debaters in Wheeler Hall parlors.

JAMESTOWN COLLEGE

On the evening of March 28 Esther Olson and Evelyn Carlson, accompanied by Miss Tainter, traveled to Jamestown to uphold the affirmative against the Jamestown women's negative team. Five faculty members of that institution rendered a 3-2 decision in favor of the home team. Francis Bordsen and Ralph Smith won a 4-1 decision at home, decision being given likewise by five faculty members: Mr. Bridges, Miss Lommen, Mr. Christensen, Mr. Sande, and Mr. Hamrin. President MacLean was chairman of the evening at Moorhead.

Two of the debate squad will probably be chosen to give a radio debate over WDAY, Fargo, and before the Moorhead Rotary Club. Earlier in the season M. S. T. C. and Concordia engaged in some lively practice debates.

As this account is being written tentative plans are being made for a trip to Hibbing, Eveleth, and Itasca Junior Colleges to meet those schools in debate.

PRAECEPTOR EDITORIAL STAFF



GERTRUDE HOLM
ASSOCIATE EDITOR



CLAUDE NEMZEK
EDITOR-IN-CHIEF



BASIL TOWNSEND
PHOTO EDITOR



GORDON HANSON
COLLEGE LIFE - HUMOR



CAROL HAGEN
LITERARY WORK



MARY HANSON
WOMEN'S ATHLETICS



RALPH SMITH
MEN'S ATHLETICS



VALBORG RINSVELD
ASSISTANT DRAMATICS



THELMA ERICKSON
DRAMATICS - FORENSICS



IRENE HAGEN
MUSIC - ARTS FESTIVAL



LOIS BESTIC
ASSISTANT MUSIC



HENRIETTA MIETHKE
ASSISTANT COLLEGE LIFE



MABEL MURTEENSON
ART EDITOR



JEANETTE BESTICK
ASSISTANT ART



WILONA JORGENSEN
ASSISTANT COLLEGE LIFE

PRAECEPTOR BUSINESS STAFF



RUBY SMITH
ASSISTANT BUSINESS



ALBERT ZECH
BUSINESS MANAGER



RUTH SMITH
ASSISTANT BUSINESS

FLYING SQUADRON



MAI TANGEN



ELMA KARLSTROM



FLORENCE GREGERSON



HAZEL HEGLAND

THE MISTIC



The MiSTiC



ET mine, too!" "Are they out yet?" "What's the headline?" "Oh, whose picture this week?"

These are only typical bits of conversation heard in the postoffice every Friday noon when the crowds gather to get the MiSTiCs. In odd corners and outer edges of this crowd can be seen the smiling countenances of staff members, who are experiencing pleasure from the commendatory remarks: "What a cute feature!" "Who do you suppose wrote that story?" "Some faculty Melting Pot!" "Isn't the open column good this week?"

Only the staff can appreciate what "getting out the MiSTiC" really means. It means hard work, hurry-scurry to get articles in on time, organization and re-organization, and oh! the typing, the headline writing, the copy-reading, and all the rest.

After all it is worth while, though, for in this journalistic laboratory we learn different arts and skills of writing; we come into immediate contact with stimulating personalities through various interviews; we learn habits of patient self-control, thoroughness, accuracy, and speed, in addition to the immediate values in experience and friendly contacts with our fellow students.

The MiSTiC serves as a unifying force of college life and is the medium for communicating the news of the school year when it happens. It serves the student body, the faculty, the alumni, and interested people of the district. It may be of interest to note that this year the MiSTiC was sent not only to the usual high school and college paper offices, but to almost all of the high school libraries over the Western district and to county superintendents' offices. The alumni circulation list now numbers approximately 200.

Harold Sand acted as an efficient editor-in-chief until the spring term, when he resigned because of class and other activities and was succeeded by Florence Gregerson, who had been associate editor. Elroy Johnson was the first make-up editor during the fall. On his resignation Paul Bernstrom took over that work. Alma Peterson became copy editor during the winter term.

Department editors were as follows: Hazel Hegland, editorials (she later took over the work of Florence Gregerson as school editor); Ida Hetland, society news; Ida Haagenon, general club news; Francis Bordsen, sports editor (and features); Willard Gowenlock, Albert Zech and Wilson Burton, sports reporters; Thelma Maland and Leilla Miller, training school news; Basil Townsend and Helen Walker, features; Mary Hanson, women's athletics (later succeeded by Hazel O'Day); Hjalmer Erickson, exchanges; Della Shackelford and Mai Tangen, assembly news; Edward Skjonby, music critic; Cecelia Brown, bookshelf (library news); and Sydney Wadleigh, copy reader.

The circulation staff included George Simson and Arlo Baldwin during the fall. In the winter Ruth Ellison took Baldwin's place when the latter resigned to devote full time to business management. Harold Preusse and Vermund Anderson were on the advertising staff. Richard Lowry and Albert Zech were typists during the year.

The list would not be complete without mention of Mr. Henry Weltzin and Marvin Syverson, who supervised the printing of the MiSTiC in the College print shop. Mr. Murray was faculty adviser.

CHAPEL ASSEMBLIES

The Chapel Assemblies are regular scheduled programs for every Wednesday and Friday of the school year. The following programs were held during the year.

September—

7. "Welcome," by President MacLean. Solos, by Mr. Preston.
9. Rev. F. Errington.
14. Rev. S. A. Sorenson.
16. Constitution Day Program, address by F. H. Peterson, former state Senator.
21. Anna Swenson.
23. "Conditions of Success," by President MacLean.
28. D. A. Caldwell, Sec. of Moorhead Chamber of Commerce.
30. Piano recital by Miss Eleanor Nesheim.

October—

5. Walter Grimm, Winona S. T. C.
12. H. O. Teigen, Druggist.
14. President MacLean.
19. Mr. A. M. Christensen, violin concert.
21. E. W. Everett, State Department of Physical Education.
J. E. Rogers, National Physical Education Service.
26. Mr. Murray Baldwin, pres. Fargo Aviation Club.
28. Mildred Smith, and Mrs. Royer, demonstration of testing eyes.
31. Dr. W. Saintsbury.

November—

2. "Will O'Wisp," presented by the Dramatic Club.
16. Red Cross and Praeceptor Drives.
18. "Nevertheless," and "The Medicine Show," presented by the Dramatic Club.
23. Commencement address by Dr. John W. Holland.
31. Musical program, Mrs. Frank Temple and visiting artists.

December—

2. Red Cross Xmas Seal Program, by the Junior High School.
7. Mrs. Hannah Kempfer, member of state legislature.
9. Wesley C. McDowell, former student of M. S. T. C.

January—

4. President MacLean, songs by Mr. Preston, and Pep Rally.
6. Talks by student body and alumni.
11. Student Council and Praeceptor programs.
13. Debate by the Argumentation and Debate Class.
18. President MacLean, review of basket-ball trip. Pep Band.
20. "Pep Fest."
25. "Moral Education," by Dr. Carmichael of Mayville S. T. C.
27. "Placement of Teachers," by President MacLean.

February—

1. Musical program by Mrs. F. Temple and Fargo artists.
3. "Pep Fest."
8. "Travels in Egypt," by Dean J. H. Sheppard of N. D. A. C.
10. Lincoln program by the Delta Sigma Literary Society.
15. "The Place of Athletics in the General College Program," Coach Nemzek.
Presentation of Football Letters by President MacLean.
24. Miss Church.
29. Program by the Training School.

March—

2. Commencement Address by Rev. N. S. Elderkin.



LORNA DOONE JAXON

LYCEUM

THE 1927-28 Lyceum season was an outstanding one from the standpoints of the excellence of the numbers presented, the innovation of exchange numbers with Concordia, and the fact that it was a financial success. The M. S. T. C. course was without question the most pretentious in the two cities this year, and was well attended.

Mr. Christensen was chairman of the committee, which also included Mr. Preston and Miss Tainter. The numbers follow:

COSSACK CHORUS—JANUARY 27

A full house welcomed Sergei Socoloff and his impressive Russian Cossack Chorus. The accomplishments of the tenors and their basses will long remain in our memory.

NEGRO SPIRITUALS—FEBRUARY 2

An interesting and unusual concert was given in the College Auditorium by J. Rosamond Johnson and Taylor Gordon, well-known negro spirituals.

RAE BERNSTEIN—DECEMBER 2

A enthusiastic audience greeted the charming young pianist, Rae Bernstein. She displayed a constant brilliance of interpretation and rare musical genius of artistic power.

SOL NEMKOVSKY—FEBRUARY 27

Sol Nemkovsky, violinist, showed a great deal of skill in his performance, playing with rare precision and intonation.

LORNA DOONE JAXON—APRIL 13

Miss Jaxon, in her captivating way, sang arias from Carmen and other operas. She has a wonderful stage presence and is brilliant in execution.

ALFRED FLUDE—MAY 9-10

As this account is written, Mr. Flude is expected to appear at the College again this year for a number of travel lectures.

THE ANNUAL ARTS FESTIVAL, 1927

FESTIVAL DIRECTORS

FLORA FRICK - - - - - *Head of the Department of Physical Education*
 MARGARET McCARTEN - - - - - *Head of the Department of Art*
 ETHEL TAINTER - - - - - *Director of Reading and Speech*
 DANIEL L. PRESTON - - - - - *Head of the Department of Music*

COMMITTEE ON ARRANGEMENTS

MAUDE HAYES - - - - - *Chairman*
 OLE R. SANDE - - - - - *Business Manager*
 OSCAR HOUGH - - - - - *Associate Manager*
 MABEL MORTENSON - - - - - *Assoc. Publicity Manager*

PROGRAM

PART I.

THE EMERALD ISLE *Langey*
 College Orchestra.

PLAY—RIDERS TO THE SEA *J. M. Synge*
 Directed by Ethel Tainter.

Characters:

Maurya, an old woman *Delia O'Neil*
 Bartley, her son *William Gowenlock*
 Cathleen, her daughter *Rosella Lyttleton*
 Nora, a younger daughter *Edna Hanson*
 Men and Women—*Ula Mæ Brown, Camille Weickert, Valborg Runsvold, Ruth Tweeton, Frank Nemzek, Bernard Rosen, Ralph Smith.*
 Scenic Artist *Bernard Rosen*
 Associate Scenic Artist *Frank Nemzek*

ASE'S DEATH *Grieg*

OVERTURE from MIDSUMMER NIGHT'S DREAM *Mendelssohn*
 College Orchestra.

PART II.

FANTASY—AWAY *Frick*
 Directed by Flora M. Frick and Jessie McKellar.

PROLOGUE: A woodland at the edge of the village. Dawn of May Day.

EPISODE I: The same on May Day.

INTERLUDE: AWAY. To mortals, a year.—to THEM a night.

EPISODE II. Same as first episode. The following May eve at sundown.

The Characters are given in the order of their first appearance.

THE VOICE OF "THEM" *Anna Louise Hendrickson*
 Daddy O'Hearn, who was away in his youth *Bernberd Rosen*
 The Shadows of Them } *College Students*
 Weavers of the Fairy Ring }
 Michael O'Day, who both doubts and fears them *Frank Nemzek*
 Shamus Gallagher *A. Clarence Mattson*
 Dan, who loves a lass *Ormenso Bjork*
 Alleen, the lass *Darline Huntley*
 Timothy Mulchay, her brother *Elroy Johnson*
 Patrick, a younger brother *Basil Townsend*
 Katie and Biddy Cassidy *Della Johnson and Lynda Ritzsche*
 Villagers and Country Folks *College Students*
 Children *Members of the Training School*
 Wee Folks, seen by mortal eyes *Training School Pupils*
 Wee Folks, as they are
 The Queen *Maxine Berry*
 Maiden *Florence Gregerson*
 Guardian of the Secrets *Fern Davis*
 The Fairy Lover *Hazel O'Day*
 The Children *Doris Thysell, Jane Preston, Margaret Mofflitt, Margaret Vowels*
 The Fairy Court *College Students*
 Apparition of Fear *Henrietta Thorsness*
 Apparition of Horror *Charlotte Hallenberg*
 Apparition of Terror *Margaret Larson*
 Solveig's Song *Grieg*
 College Orchestra

ACCOMPANISTS

Osa Bertelson, Irene Hagen, Ruth Iverson, Edelweiss Eddy

MAKE-UP ARTISTS

Moselle Weld Hagen, Mayme Christenson

THE ORCHESTRA

Daniel L. Preston *Director*
 D. L. Preston, Mrs. D. L. Preston, *Violins* *Edward Skjonsby* *Tuba*
 W. C. White, Charles Pike *Cornets* *Marie Petrie* *Flute*
 A. M. Christensen *Clarinet* *Irene Hagen* *Piano*

III Studio Reception and Art Exhibit

Art Rooms, Monday, May 2—3:30-5:30 P. M.

Margaret McCarten, Director.

The exhibit included examples of work done by the college students in landscape, still life, figure composition, design, lettering, illuminated parchment texts, decorative letter maxims, block printing, leather tooling, gesso work, batik, pencil, pen and ink work, free-hand paper cutting, and poster design.

Water color, tempera, India ink, pastello, pencils and dyes were the mediums used. Demonstration were given by the students in batik, block-printing, flower arrangement, and leather. Designs for screens, files, box covers, textiles, book and magazine covers were shown.

THE ANNUAL ARTS FESTIVAL, 1928

FESTIVAL DIRECTORS

FLORA M. FRICK - - - *Head of the Department of Physical Education*
 MARGARET McCARTEN - - - *Head of the Department of Art*
 ETHEL TAITER - - - *Director of Reading and Speech*
 DANIEL L. PRESTON - - - *Head of the Department of Music*

COMMITTEE ON ARRANGEMENTS

ARNOLD M. CHRISTENSEN - - - - - *Chairman*
 ALLEN ERICKSON - - - - - *Business Manager*
 LYDIA SCHWANDT - - - - - *Art Manager*
 IDELL MALME - - - - - *Music*
 ALICE EASTLAND - - - - - *Pageant*
 EDWARD SKJONSBY - - - - - *Publicity Editor*
 EDGAR JOHNSON - - - - - *Publicity Manager*

GENERAL PROGRAMME

Music *Art* *Drama*

May 13, 14, 15, 1928

SUNDAY, 8:15 P. M.—Sacred Concert by College Chorus and Soloists.

“Hear My Prayer” - - - - - *Mendelssohn*
 RUTH MIELICKE, Soprano Soloist

“Seraphic Song” - - - - - *Gaines*
 IDELL MALME, Alto Soloist

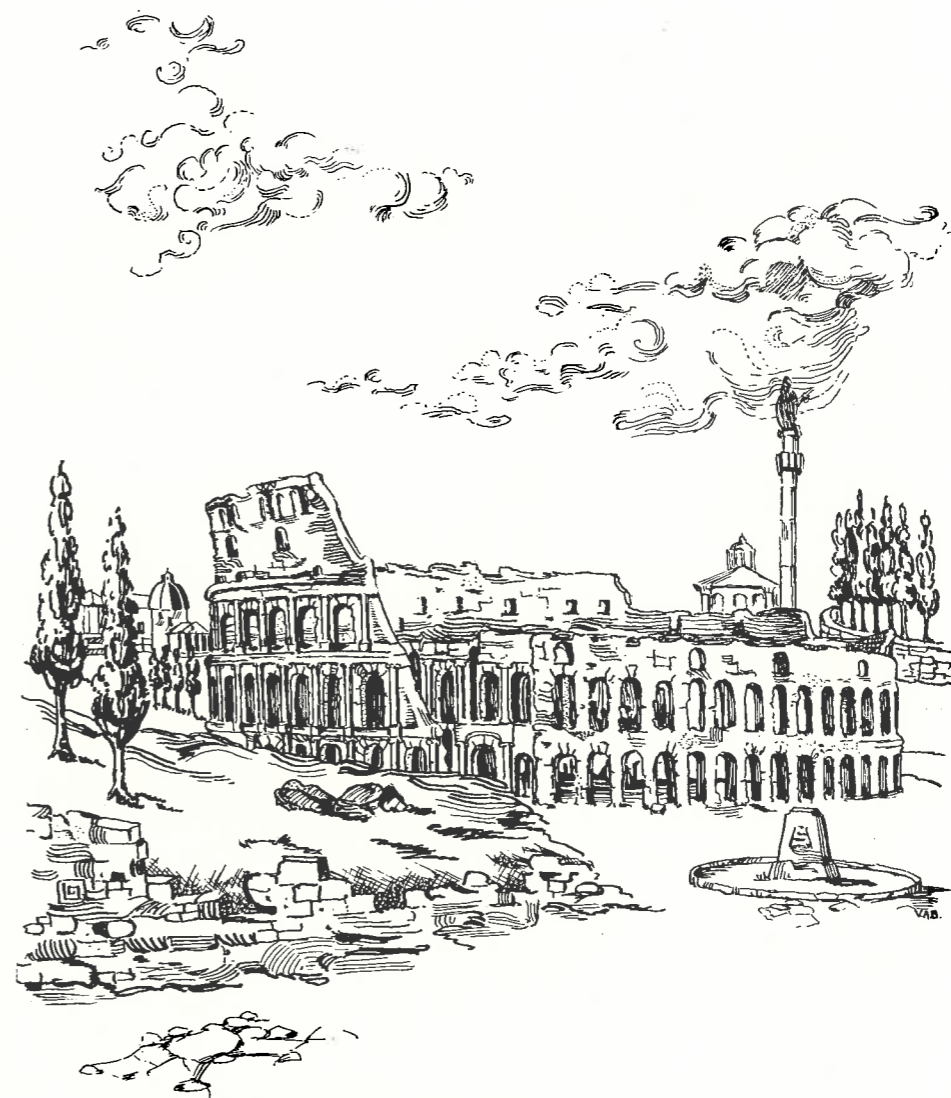
“St. Cecelia Mass” - - - - - *Gounod*
 MISSES LARSON AND ANDERSON, Sopranos; OTTO BYSTROM, Bass;
 DANIEL PRESTON, Tenor

MONDAY, 3:00 P. M.—Art Exhibit and Studio Reception—Art Students.

MONDAY, 8:15 P. M.—Physical Education Classes and Dramatic Club.

TUESDAY, 3:00 P. M.—RUTH RAY, Violinist, and LESTER SPRING, Basso.

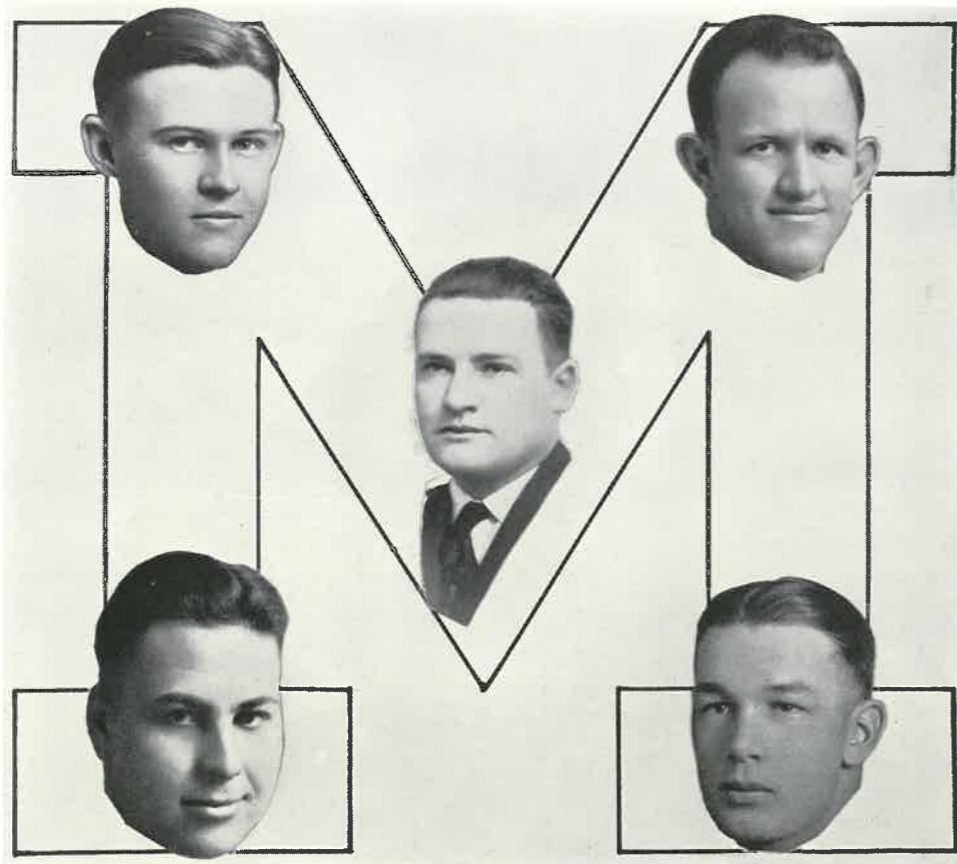
TUESDAY, 8:15 P. M.—MARGERY MAXWELL, Soprano, and WALTER WHEATLY, Tenor.



COLISEUM

(Prototype of the modern football stadium)

FIELD



W. BURTON
Basket-Ball Captain, 1927-1928

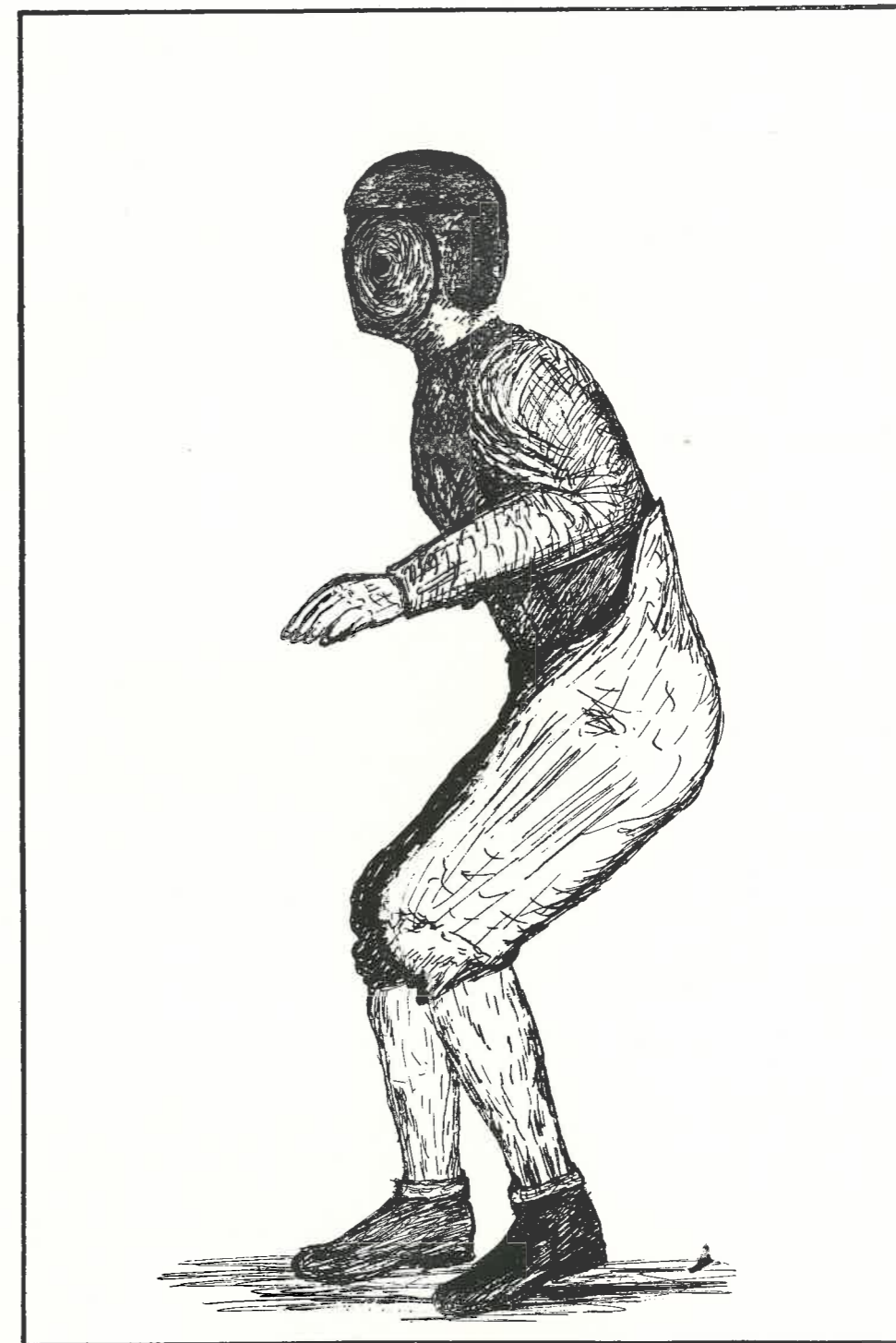
R. SMITH
Football Captain, 1928

COACH ALEX J. NEMZEK
Athletic Director, M. S. T. C.

"Sliv" has an envious record in the Interstate Conference.

L. RINGDAHL
Football Captain, 1927

S. BIELFELDT
Basket-Ball Captain, 1928-1929



FOOTBALL



THE 1927 FOOTBALL SEASON

Park Region	0	M. S. T. C.	50
St. Cloud S. T. C.	7	M. S. T. C.	0
Wahpeton Science	0	M. S. T. C.	0
Concordia	14	M. S. T. C.	0
Jamestown	7	M. S. T. C.	19
Valley City	7	M. S. T. C.	0



THE SEASON

THE M. S. T. C. football season of 1927 was a very peculiar one. At the early stages of the season it appeared that we had a "world beater of a team".

In the game with Park Region, the boys played like Big Ten Champions. Baldwin, the "Blonde Thunderbolt", displayed the form which has given him two All-Conference berths. Coach Nemzek's stocky half broke away for a number of long runs. The Ped followers were expecting the Fargo lad to earn another position on the All-Conference berth. But the later games proved that the Peds had to play without the services of Baldy. That was a



B. TOWNSEND

great shock to the Ped squad, for Baldy is one of the hardest men in the conference to stop. He drives hard, low, and fast. He is an exceptionally vicious tackler and blocker. Coach Nemzek often uses Baldy as an example of the type of fighter necessary to a good football team.

Townsend and Ringdahl, the "Big-Bens" of the team, were towers of strength at all stages of the Park Region game. Although Townsend did not measure up to the play of the Ped Captain, Ringdahl, he showed great improvement over his play of the 1926 season. The play of the Peds throughout the 1927 season hinged to a great extent on the play of these two giant linemen. This fact was brought to light more impressively when Ringdahl was placed on the All-Conference team at guard.

A number of other players showed up especially well in the Park Region game. The game was a walk-away for the Crimson, although Park Region fought gamely, and we won by a 50-0 score. It is not necessary to place any more emphasis on the play of the individuals. Let it be



L. RINGDAHL
Captain

said that the team played as a unit. The line opened large holes and the Ped backfield walked through for gain after gain.

We next journeyed down to St. Cloud to meet the St. Cloud State Teachers' College. We were defeated 7-0 in a game that was in doubt until the final second. We lost a player, Ted Nemzek, for the season in this game, but we gained one when Smith entered the game. Nemzek's foot was broken and his work was hampered as a result. However, Ted's opponent knew that he had met a player of no mean ability. Ped followers received the news of the injury with heavy hearts, for well did they remember the tactics of the "Big Fellow" during



A. SIMON



the seasons of 1924 and 1925. Ted is one of the players to be elected unanimously for two consecutive years to an All-Conference berth. And let it be said that in '24 and '25 Ted reigned supreme as a tackle in the Interstate Intercollegiate Conference. Although a big man, Ted is one of the fastest men to wear a Ped uniform.

The play of Smith, Jelly Erickson, and George Edwards in the St. Cloud game was also of a high order. Smith went into the fray after the first quarter, but he played the game of his life. He had recently undergone an operation for tonsillitis and had not played or practised heretofore, but that did not hamper his play. It is rather difficult to estimate the importance of Smith to the Ped squad. He plays a type of game which often misses the vision of the average spectator. Smith does not confine his play only to linemen, but he goes through at the opportune moment for the secondary defense. This fact has pleased Coach Nemzek very much. Besides playing the game hard, Smith has a knack of imparting fight to the players on the team.



R. SMITH
Captain, Elect

It was to be expected then that his team-mates would elect him to be their leader for the 1928 season.

After the St. Cloud game injuries so handicapped the players that our showing was hampered as a result. In the Wahpeton game, played on a slushy field, these injuries affected the game greatly. Eraker, the fighting guard, and Zech played real football. The game ended a scoreless tie. This game marked the loss of Baldwin for practically the rest of the season. The "Blonde Thunderbolt" received a badly bruised and sprained ankle.

In the Concordia game, won by the Cobbers 14-0, the riot of color and noise spurred on the players to heights unknown before. Eraker, Art Simson, and Oraas in the line drew many favorable comments for their fine brand of football. These two men would probably have starred if they had not been handicapped by in-



H. ERICKSON

juries. Only the fact that Concordia had the best team in its history enabled them to win the second game lost by a Ped eleven to the Cobbers in the history of their athletic relations. It was a great battle, the first half ending 0-0, but the Cobbers came back in the second half to take victory. Much credit is due to Jelly Erickson in this game. For four years Jelly has battled on the Ped gridiron, and he has lead the Peds in both football and basket-ball. The 1927 season marked the close of Jelly's athletic career, and Ped followers were glad to see Jelly perform superbly against the Cobbers. As fate would have it, the Cobber game was Jelly's last football game for the Peds. Although playing with a number of broken and fractured ribs, Jelly fought like a Trojan throughout the game. M. S. T. C. is proud to have had Jelly's services. It will take a sterling athlete to replace the "Big Swede", formerly of Moorhead High School.



T. ORAAS

We drubbed Jamestown here 19-7 in a real game. Gowenlock made a name for himself when he converted a Jimmie fumble into a Ped touchdown. Goldie played the wide-awake football that day which Coach Nemzek has always drilled upon, and as a result he earned his coveted "M".

Burton and Anderson, halves, played their best game of the season against Jamestown. Both of the boys are unusually fast, and once they get into an open field they are exceptionally hard to stop.

George Edwards made a number of long runs in the Jamestown game, one of them going for a touchdown. The victory was also largely due to the



A. BALDWIN

passing and kicking of Edwards. George was the outstanding man in the conference for kicking and passing.

We were tied with Valley City for the championship, but when they defeated us 7-0 we had to be content with second place. Claude Nemzek, Edwards, and Ringdahl starred in this battle. Baldwin was in the fray for a short time, and made an enviable impression, but he was forced to leave the game at an early stage due to injuries.

The game at Valley City was one of the hardest fought battles of the season. But the team did not work together as a unit. George Edwards was practically the whole show for the Ped backfield. This plucky little quarterback played one of the best games of his career. His passing and kicking was of a high order. He also made a number of substantial gains, but his team mates



C. NEMZEK



were unable to break down the strong defense of the Vikings.

In the line Ringdahl and C. Nemzek at tackles bore the brunt of the Ped attack. Coach Nemzek's tackles broke up play after play throughout the championship struggle, but the game was lost when a costly fumble paved the way for a Viking victory.

The game at Valley City marked the close of the season which was cut short when Mayville and Ellendale cancelled games with us. A game was scheduled with the North Dakota State freshmen team for Armistice Day, but the game was cancelled because of severe weather conditions.

We scored 69 points to our opponents' 35. We won second place in the conference and placed six men on the All-Conference teams. Zech, Ringdahl, Claude Nemzek, and Edwards were honored with first team selections, while Smith and Erickson made the second team.

The boys who did not make letters but had the spirit to come out were Leland, Mattson, A. Erickson, Christian, Lowry, Shulstad, Eraker, Elroy and Edgar Johnson, and Vermund Anderson. We hope to learn from these men next fall. Vinz, Leland, Eraker, and Elroy Johnson were prevented from making a splendid showing because of injuries.

When considering the fact that injuries were our Nemesis, we can well acclaim the record of our boys.

With a number of veterans back next fall we hope to add another championship to our list.

SPRING FOOTBALL

Although the Peds do not have a strenuous spring football campaign as other schools have, Coach Nemzek called out for football candidates in the spring of '28. The fact that many of the old men will not return to school in the fall prompted the action taken by the coach. Consequently the two weeks of spring football practice consisted mainly of fundamentals for the new men. A



G. EDWARDS



V. ANDERSON

surprisingly large number of inexperienced men answered the call. The spring session was brought to a close by a game between two teams picked from the squad. The two teams were rather evenly matched for the game. However, in the line-up of the team led by Captain-Elect Ralph Smith, a veteran backfield was used. Coach Nemzek drilled the veteran backs in a new style of offense. The game brought out a number of possibilities in regard to the offense which were highly pleasing to the Ped mentor.

Captain Smith led his team from the pivot position. Stationed at the flanks were two new men, Gotheridge and Grina. These two

chaps gave promise of developing into valuable men. At the tackles Nelson and Claude Nemzek worked, although the latter played fullback for the greater portion of the game. Leland Vinz held down left tackle for part of the game, alternating with Claude Nemzek at fullback. The work demonstrated by the tackles on this team was nothing short of high class Conference play. No doubt the bulk of the line work this fall will be carried on by Smith, C. Nemzek, Nelson, Moe, and Art Simson. Although none of the men mentioned is certain of a regular berth, a lively pace will be set by all of them. The only reserve used in the line by Smith's team was Dick Lowry. He will not return to school next fall; consequently his services will be lost for the 1928 campaign.

In the backfield, Edwards at quarter, Burton and Baldwin at halves, and Vinz and Claude Nemzek at full, worked through the game. The men mentioned gave promise of a great deal of drive and speed. Baldwin and C. Nemzek were mainly used in advancing the ball. Edwards displayed some of his cunning at kicking and returning punts. It is expected that the five men used in the backfield will be back for the 1928 campaign. With a number of other men on hand, and new men coming to school, Ped followers should see some classy backfield work the coming fall.

The team opposing the one just described was led by Jelly Erickson. Let it be said at this time that Jelly is one sweet line man. He worked at center, tackle and end. Without a question, Jelly is a fine athlete. The fact that he will not be back next year is very disappointing. His ability and fight were very much in evidence throughout the game between the two Ped teams.

The line representing the second squad was not as heavy and experienced, but a great deal of scrap and fight was shown. Men working in the other line were Preusse, Syverson, Houston, A. Erickson, George Simson, Frank



W. GOWENLOCK



A. ZECH



T. NEMZEK



Nemzek, Elroy Johnson, Edgar Johnson, G. Leland, Skip Anderson, Polly Christian and Shulstad. Frank Nemzek at end displayed the form which landed him on the Inter-collegiate All-Conference team for two years. It is to be regretted that "Nemy" will be graduated. The boys will always remember "F" as a jolly sport, not only on the gridiron but also on the campus in general. At the other end Polly Christian performed in a gratifying manner. Polly may not be back in the fall, but if he does he will be welcomed back to the Ped gridiron. He has shown a willingness to fight, block and tackle. With such a make-up any man having a strong physical constitution has great possibilities for success.

The team led by Jelly Erickson had a number of backfield men possessing a great deal of drive and speed. At fullback Ted Nemzek drove through the line, passed, and gave his backs excellent interference. There is a possibility that Ted will be back for the 1928 campaign. In case that he does, Coach "Sliv" Nemzek will have a pile-driving backfield ace. In addition to Ted, Vic and Happy Fridlund and M. Johnson played in the backfield.



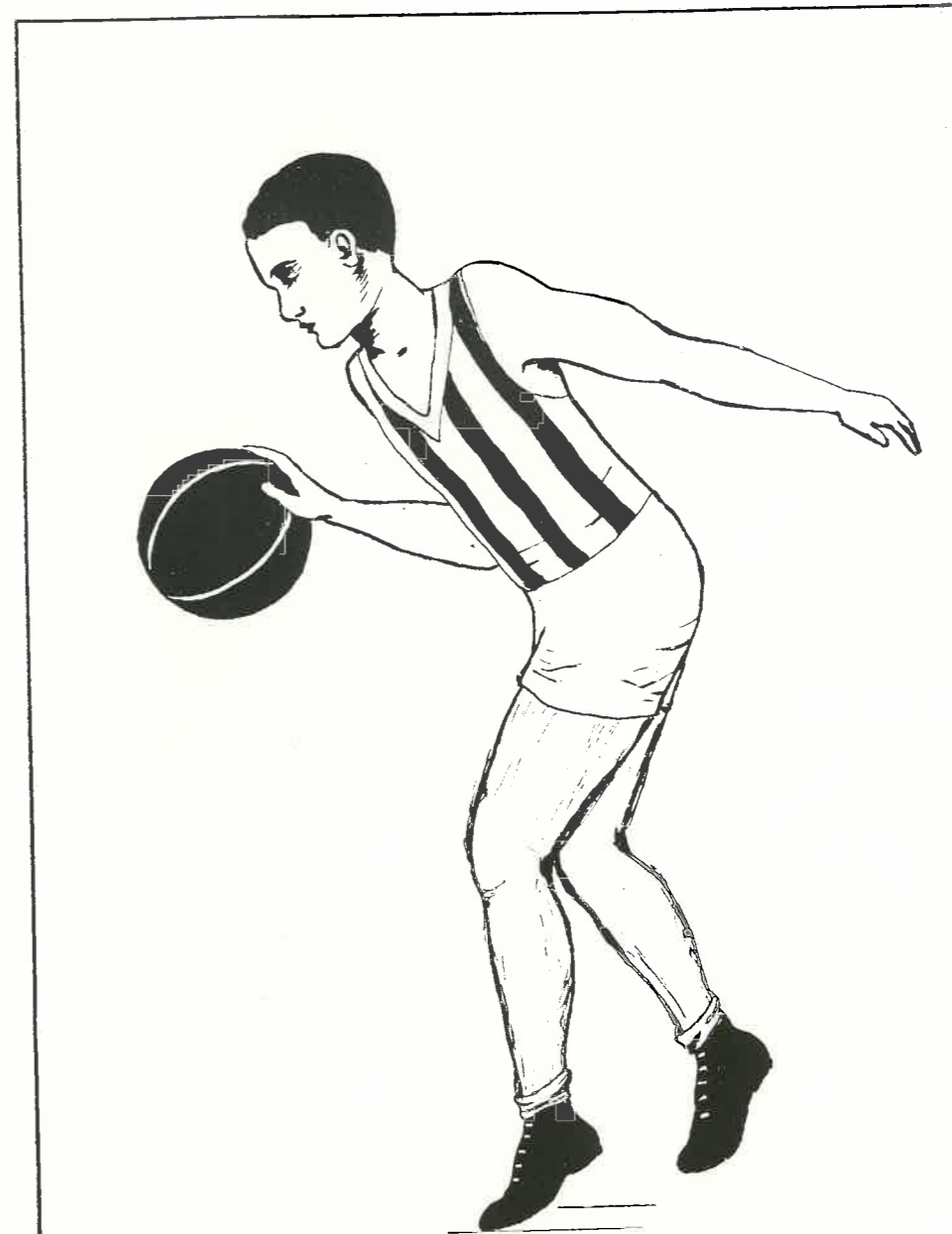
L. VINZ

The last three boys will be back for the 1928 season. They showed speed and drive in addition to tackling ability. Johnson caught a pass thrown by Ted Nemzek, taking the ball to the ten-yard line. But the half ended before any scoring was possible. In the second half Captain Smith's team was the whole show. His backfield combination drove through for long gains, but the whistle ended hostilities when the ball was on the three-yard line.

Although the spring campaign was not an extended one, it gave the Ped Coach an idea of the abilities of the new men.



W. BURTON



BASKETBALL



Upper row: Coach Nemzek, S. Bielfeldt, O. Botts, M. Johnson, V. Lindblom.
 Middle row: G. Grina, C. Warner, H. Erickson, A. Simson, B. Christian.
 Bottom row: V. Anderson, V. Fridlund, G. Edwards, W. Burton, D. Gotheridge, A. Baldwin, L. Vinz.

THE 1927-1928 BASKETBALL SEASON

Wahpeton Science	33	M. S. T. C.	17
Park Region	30	M. S. T. C.	26
Concordia	22	M. S. T. C.	27
Valley City	29	M. S. T. C.	19
Jamestown	18	M. S. T. C.	28
Wahpeton Science	29	M. S. T. C.	25
Mayville	16	M. S. T. C.	25
Valley City	28	M. S. T. C.	24
Concordia	28	M. S. T. C.	23
Jamestown	17	M. S. T. C.	19
Bemidji T. C.	22	M. S. T. C.	33
Park Region	12	M. S. T. C.	20



CAPTAIN W. BURTON

THE basket-ball season of 1927-1928 was the most successful in the history of M. S. T. C. The Ped squad won third place in the Conference, in a year when competition was keenest, and tied with Concordia. Whereas in the past we have sometimes occupied the bottom of the Conference ladder, this year's record is a milestone on the athletic highway for the Crimson.

One may add in passing, that the 1927-1928 basket-ball season was a milestone on the athletic highway for the Interstate Intercollegiate Conference. The Peds won games out of the conference, but the most significant non-conference wins were turned in by Wahpeton Science, Jamestown College, and Valley City Teachers. Wahpeton went through the season undefeated in a schedule of fifteen games. The most notable victory was over the North State Bison. Consequently Wahpeton claimed the college championship of North Dakota with North Dakota University. The latter won the championship of the North Central Conference.



D. GOTHERIDGE

G. EDWARDS

A. BALDWIN

Valley City Teachers also played a number of non-conference games. Their showing was highly gratifying to followers of the Interstate Conference as a whole. Jamestown College also set up an envious record when they met a number of strong college and independent teams throughout the Dakotas, Montana and Nebraska. Year by year our conference is entering new fields of athletics. The success gained in those fields is indicative of the strength of our conference.

We were unusually late in starting practice, but the pep and fine spirit displayed by the large turnout more than compensated for this. During the Christmas holidays when the team, after two weeks of practice, lost to Wahpeton Science 33-17 and Park Region 30-26, the outlook appeared very dark indeed for the Crimson.

However, the boys made the season a pronounced success when they took in Concordia 27-22. To describe the game would be futile, for who can do justice to a game where the Peds and the Cobbers play before the traditionally large crowd? Suffice to say, it was a fine game.



V. ANDERSON

S. BIELFELDT
(Capt. Elect)

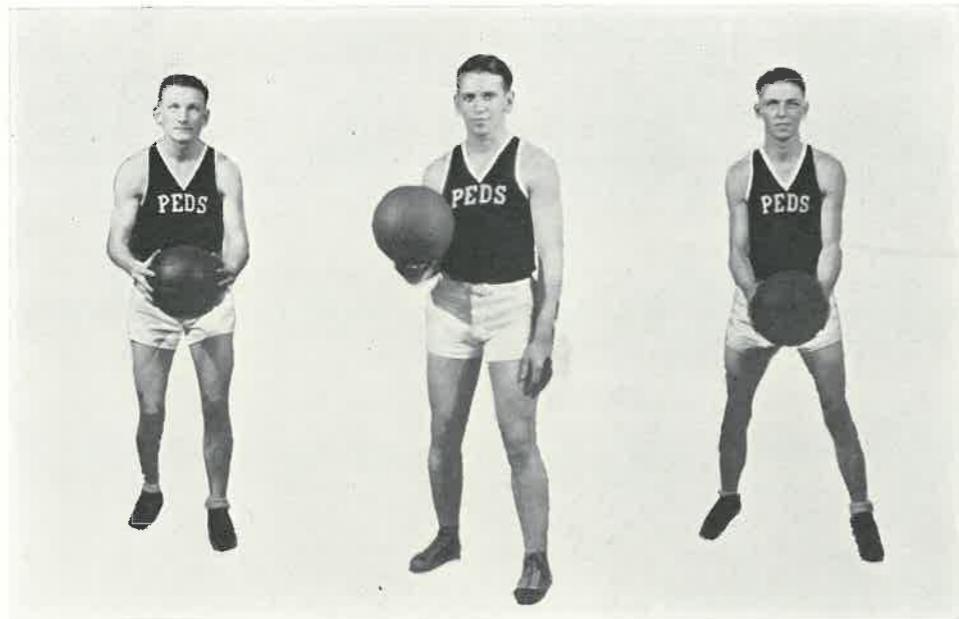
H. ERICKSON

The boys next made a trip into North Dakota, where they broke even in their two games. They lost to Valley City 29-19 and defeated Jamestown 28-18.

Wahpeton Science, with a team declared to be the finest to ever represent an Interstate Collegiate Conferenc team, defeated us here, 29-25. Our boys gave them one of the closest battles that Wahpeton received during the entire season.

Mayville's Comet five proved that they were no match for the Peds when they lost 25-16 in a good game here. Valley City defeated us for the second time 28-24 when they shot the ball from all angles to defeat a hard fighting team. Concordia evened the series with us when they conquered our boys, 28-23, in a battle fought on the Cobber floor. This was a repetition of the earlier Cobber-Ped battle.

The remaining games were all wins for the Crimson. We beat Jamestown again 17-19 and avenged our defeat at the hands of Park Region when we conquered them 20-12.



V. FRIDLUND

L. VINZ

C. WARNER

This year also marks the first that a Minnesota Teachers' College five has played upon our floor. We made an auspicious entry into the Minnesota Conference circles vanquishing Bemidji Teachers' College 22-23 in a fast game here.

As a whole, the team made us proud of them. They played clean and hard all through the season. Opponents always knew that they would meet tough opposition either on their home floors or upon our floor, the Moorhead Armory. With the greater part of his team back next year, Coach Nemzek should be able to set up a record passing the fine one made this year.



TRACK



BROCKMIER FINISHES FIRST IN THE 100

THE INTERSTATE
INTERCOLLEGIATE CONFERENCE
TRACK MEET

HELD AT MEMORIAL FIELD, M. S. T. C.

Jamestown College	-	-	-	-	44	points
Valley City S. T. C.	-	-	-	-	37	points
Wahpeton Science	-	-	-	-	16½	points
Moorhead S. T. C.	-	-	-	-	13½	points
Ellendale Normal	-	-	-	-	5	points
Mayville S. T. C.	-	-	-	-	1	point



THE SEASON

M. S. T. C. had a very successful track season in '27. Besides playing hosts to the rest of the Conference schools at the annual track meet, she won fourth place in conference ratings. Track has been the baby sport of this institution, but the cinder path artists proved that M. S. T. C. will always be a strong factor to be considered in the future meets.

The track meet proved to be the most successful meet ever staged in the Interstate College Conference. Seven records were broken when the final event had been run off. The clerking of the meet was in the hands of our college boys, and the events were staged in an effective manner.

Moorhead remained in possession of the record for the javelin for the second successive year, Bjork having won it the year previous at Valley City, and Zech passing his team-mate for a new record this year. The surprise of the meet was the showing made by Wahpeton's two-man team, consisting of Weed and Johnson. These men made enough points to give their school third place.

The Ped tracksters who participated in this meet and the events in which they competed were: Zech, javelin; Bjork, javelin; Ringdahl, discus and shot put; Burton, broad jump, hurdles, and dashes; Bestick, pole vault and hurdles; Myers, high jump; and Fridlund, hurdles.





TENNIS

FOR the first time in athletic history at M. S. T. C. we had a tennis team during the spring of 1927. Wheeler, Byler, and Anderson comprised the varsity squad. A tournament had been scheduled to be held during the Interstate Conference Track Meet, but just as the Moorhead trio were in trim to meet the cream of the Conference, officials declared the courts too muddy to be used.

Tennis is a growing sport at the College. The tournament this spring should bring out many more than formerly. More than thirty had signed up to play tennis early this spring.

BASEBALL

Baseball was a phase of the physical education program during the spring of '27. Care was taken by Coach Nemzek to develop a knowledge of the game in addition to provide competition. Several games were scheduled with various fraternity teams from the North Dakota Agricultural College. When the season was over many of the College team participated in summer baseball, particularly as members of the Moorhead American Legion team.

WOMEN'S ATHLETICS



WOMEN'S ATHLETIC LEAGUE





KICKBALL

Upper row: L. Hallstrom, E. Anderson, C. Eidem, E. Hanson, E. Ditzler, L. Bell, B. Eidem, V. Thorson, E. Blaha, M. Hanson.
Bottom row: V. Bartleman, E. Elseth, A. Eastland, E. Johnson, I. Haagenson, H. O'Day, C. Strand,



HOCKEY

Upper row: E. Johnson, E. Ditzler, M. Bergland, I. Hagenson.
Second row: E. Elseth, C. Strand, H. O'Day.
Bottom row: L. Hallstrom, A. Eastland, M. Hanson, E. Halvorson, B. Eidem.



VOLLEY-BALL

Upper row: E. Hanson, M. Bergland, M. Hanson, E. Ditzler, P. Rekedal, V. Thorson.
Second row: E. Johnson, V. Bartleman, C. Strand, C. Eidem, B. Eidem.
Bottom row: L. Hallstrom, I. Haagenson, H. O'Day, E. Blaha.



SOCCER

Upper row: B. Eidem, E. Ditzler, M. Bergland, E. Johnson.
Second row: C. Eidem, E. Elseth, M. Hanson, E. Blaha, E. Hanson.
Bottom row: A. Eastland, V. Bartleman, C. Strand, I. Haagenson, H. O'Day.



BASKET-BALL: FIRST TEAM

Upper row: E. Elseth, F. Kugler, H. O'Day.
Bottom row: M. Knutson, B. Renna, V. Bartleman, I. Cook.



BASKET-BALL: SECOND TEAM

Upper row: M. Hanson, C. Strand, A. Eastland.
Second row: G. Halvorson, G. Rodenberg.
Bottom row: E. Johnson, G. Young, A. Bjurnrud.



BASKET-BALL CHAMPIONS

Upper row: B. Renna, M. Daly, G. Rodenberg, E. Blaha.
Bottom row: G. Young, G. Jones, G. Halvorson.



BASKET-BALL RUNNERS-UP

V. Bartleman, M. Knutson, E. Hanson, A. Bjurnrud, D. Jensen, H. Hegland.

WOMEN'S ATHLETICS

MONOGRAM CLUB

The Monogram Club is made up of women who have earned 1,000 points in athletics. The "M" is considered a high honor. The sweater is the highest award offered and it signifies that the owner has earned 2,000 points in athletics.

HOCKEY

The prospects this fall for hockey were bright although the number out for this sport was not large. As a result only one team was chosen. The team represents those who were the most interested and the most accomplished in the sport.

SOCCER

Much progress was made in soccer this year. The weather for the most part was ideal and the field in good condition. As a result much interest and enthusiasm was shown.

KICKBALL

Kickball is one of the favorite sports of the fall term. A great number of girls were interested and made it a great success. Two fine teams were chosen, and every member on those teams is a real player. The Freshmen gained some valuable experience which will help them in putting a strong team into competition next fall.

BASKET-BALL

Basket-ball was quite a success this year. Five different teams competed for the championship, namely, Pedets, Freshmen I, Freshmen II, Outside, Junior High School. From these teams the first and second teams were chosen. In the near future the first and second team will stage a contest in which they expect to give each other some real competition.

VOLLEY-BALL

Volley-ball was also one of the favorite sports on the campus this fall. The game is not a strenuous one, yet it affords much fun and activity.



SOCIAL RECORD

BALLROOM

THE SOCIAL CALENDAR OF EVENTS 1927-1928

FALL

September 23—Faculty Reception
October 8—Home-Coming Dinner
October 8—Home-Coming Dance
October 10—Inter-Sorority Tea for Faculty and Students
October 29—All-College Party
November 5—Delta Sigma
November 18—Sophomore Class Party
November 19—Lambda Phi Sigma Ceremonial
November 19—Gamma Nu

WINTER

December 3—Mistic-Praeceptor Party
December 8—Football Banquet
December 10—Owls
January 6—All-College Party
January 13—W. A. L. Term Party
January 21—Delta Sigma
January 28—Freshmen Term Party
February 4—All-College Party
February 11—Pi Mu Phi
February 18—Gamma Nu
February 23—Country Life Term Party
February 25—Sophomore Class Party
March 2—Junior-Senior Term Party

SPRING

March 12—Men's Dinner
April 14—Gamma Nu
April 20—Delta Sigma
April 21—Junior-Senior Term Party
April 27—Mistic-Praeceptor Party
April 28—Owls; Second Degree
May 5—Kappa Pi
May 12—Pi Mu Phi
May 18—County Life Club
May 19—Freshmen Class Term Party
May 25—W. A. L. Term Party
May 26—Art Club
June 1—Owls
June 2—"M" Club
June 4—Alpha Psi Omega
June 5—President's Reception
June 5—Senior Prom
June 6—Swing Out Day
June 6—Alumni Dinner
June 7—Faculty Reception
June 7—Commencement

THE 1928 PRAECEPTOR HALL OF FAME

The staff takes pleasure in announcing the names
of the ten most representative students of 1928.

CLAUDE NEMZEK
THELMA ERICKSON
RALPH SMITH
IRENE HAGEN
VALBORG RUNSVOLD
FLORENCE GREGERSON
ELROY JOHNSON
VIVIAN MERO
BASIL TOWNSEND
RUBY SMITH





CLAUDE NEMZEK

student would be ineligible in succeeding years.

The Praeceptor plans to announce each year the names of those students in attendance during the regular school year who were chosen to this section in former Praeceptors. Such students this year are Hjalmer Erickson and Rosella Lyttleton.

Claude Nemzek is a senior, and will receive his degree next fall. "Babe", last of the clan of Nemzek, ten in number, was elected president of various and sundry offices last spring. Asked who were the newly elected heads of the Student Council, the Athletic Board of Control, and the Praeceptor were, the MiSTiC reporter could well have given his answer in the usual style of a college yell, to-wit: Nemzek! Nemzek! Nemzek! The paragrapher can conclude in

ACCORDING to the time-honored custom at Moorhead S. T. C., a vote was taken by the entire student body and faculty to determine who were considered the most representative students. As usual, no campaigns in the real sense of the word were conducted, the day for voting being unannounced beforehand.

Perhaps the list this year is more truly representative than ever before because candidates from any class could be entered, whereas in previous years they could be selected only from one class. A motion was also proposed and passed that anyone who had previously been chosen a representative



THELMA ERICKSON

no better style than by adding that Claude has carried on these duties in admirable fashion.

Thelma Erickson had the unusual honor of being named to this section while yet a freshman. She showed a willingness to do her share, and more than her share in class activities, activities of social organizations to which she belonged, and in the editing of her section of the Praeceptor. An outstanding contribution was that of serving as head cheer leader. By her pep and enthusiasm she has helped to place college spirit on a higher plane than usual.

Ralph Smith is equally at home on the football field or on the debate platform, on the ballroom floor or before the footlights.



RALPH SMITH

Need more be said than that he displays an enthusiasm that is contagious in these varied types of activity and so may be considered a leader whose influence is felt in the life of the College?

What would students have thought during the years 1926 to 1928 if, on coming to chapel assembly, they did not see Irene Hagen on duty as pianist? Her talents at the keys have been in demand in a formal way in College choir and orchestra work and for various informal occasions when Terpsichore was ruling spirit. To whom else should we have turned but to her to supervise the music section of this book? She also contributed her share to social activities.



IRENE HAGEN



VALBORG RUNSVOLD

Valborg Runsvold was Lady Mary in "The Admiral Crichton", and as such must be given credit for an admirable interpretation of that most difficult part. As the elder of three sophisticated daughters, she it was who set the pattern for them to follow; on the island, she more than held her own in competition with the others under circumstances in which all superiority because of family name and prestige was swept away, and one was judged for what he was in himself.



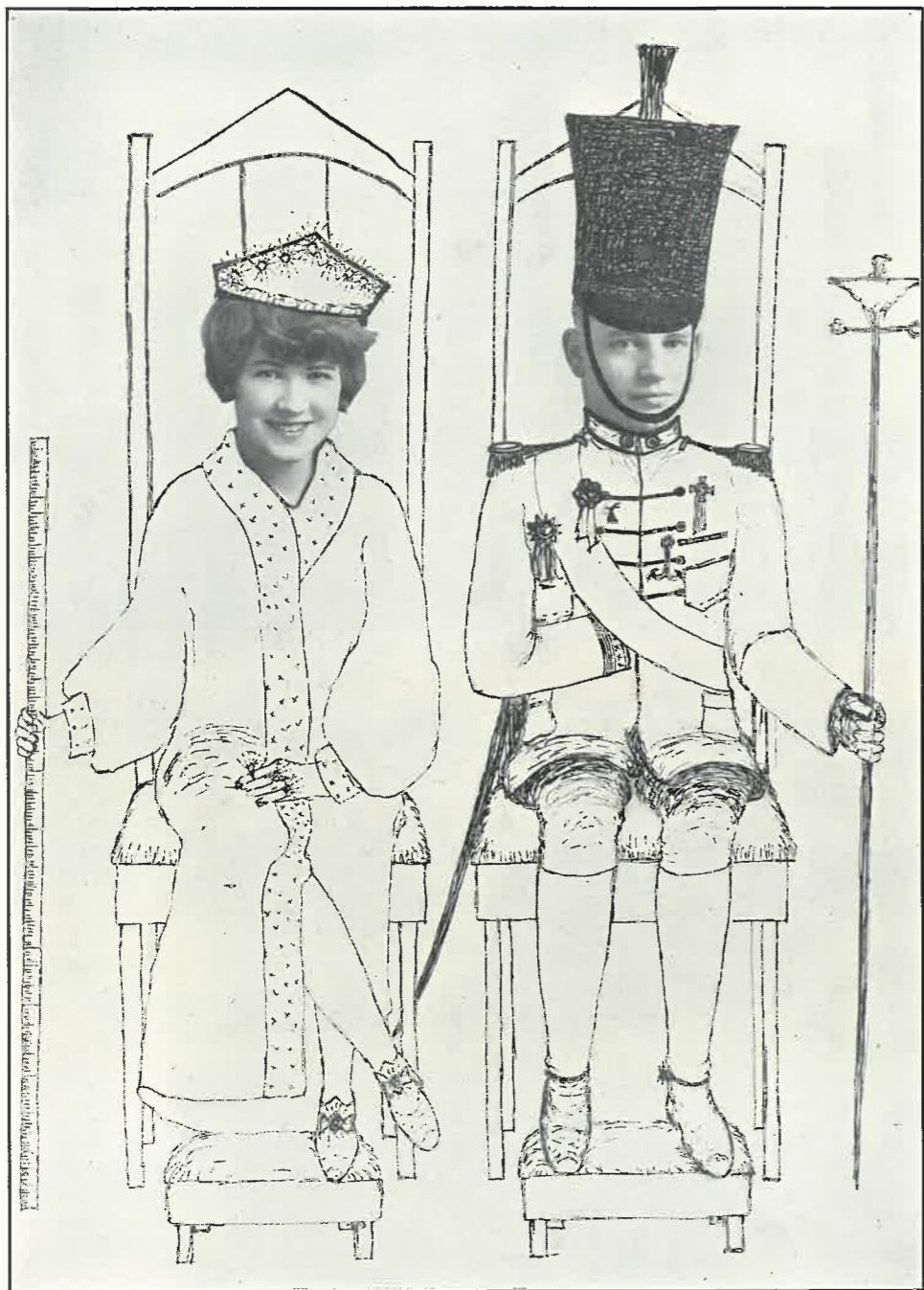
FLORENCE GREGERSON

If there was anything to be announced, a new idea to be presented to the student body, an incident which presented possibilities for a feature story, or a good joke to be told, Florence Gregerson was the one to whom everyone turned. Petite, enthusiastic, a bundle of energy, and serious in spite of an Irish love of the comic side of almost everything, she left her impress on life at M. S. T. C. chiefly, perhaps, through the columns of the MiSTic.



FEATURES

(Campus)



Gordon Hanson and Co. wish to present Ione Peterson and Albert Zech, Campus Queen and King, who will officially preside over the feature section of the 1928 Praeceptor.



Streetcar Oras at Work

Ty Cobb

Kampus Kids

Dempsey Finishes

What a pose!

How Affectionate!

Girls not Gobs

Ike's Tyke

Hes the Shiek of Araby

Upper Class Men to the ?? Degree

Thats Them!

Finklestein & Reuben



Ike & Mike



Ted



Streetcar & his Pals



A bear of a snarl



Little bells have big???



Mr & Mrs??



The Gang's all Here.

Two Rising young men.



Sue & Pursue



All-Conference.



Lord Loam.



Blondy - the Brunette.



Look At that Form!



Power! Speed! Drive!



That's the Peds



Feet!



Never Missed a Game.



Let 'er GO!



By the touchdown!



????



I. W. W. S.



EVERYBODY WORKS



Quartet of Intellets.



Lambda Phis.



Not Studios!



Ambition.



Sofa-woman-Sophie!



Who does she dance with? Ladies choice.



Why Worry



Where's the Essex?



Innocence is Bliss.



Shave a haircut SIX bits!



House of Lancaster.



The Faculty.



Socrates & Aristotle.



PI's.



Oh! That Grin!



The Three Musketeers.



After the Party!



INDOOR SPORTS



Stew - The Old
Accordian Man.



Battling Kid!



Two + Raise Yuh Two!



Old King Cole



The American
Venus.



Post No Bills.



Br-r-r!



Studios! Oh! No!



Goxey's Army.



Why so sad.



? ?



Chuck + Danny
Pose.



What a hot it?



Why Ballywept
+ gnashed his
Teeth.



Some reasons Why Taxis Prosper.



Lo! Postoffice!



★ ★ ★



CONCORDIA GAME



A couple comers.



? Graceful??



DETROIT'S ONLY HOPPER.



Society Skates.



Thanks Jelly!



Feeding time.



DETROIT LAKES VS PEDS



He needs Protection.



Initiation!



Aint She Sweet.



Admirable Grichton.



Cold?



Oh! Sa Prim!



WARMER.



That Smile, Was Swept Way, eh Caruso?



Hot!!



Why Shang's visited the State.



Will yuh, huh?



Maybe they'll sigh!



Something wrong
Dorm Kids
Work.



Bravo!



Now Ain't They Nice!



Tiny & the Kids.



Oh! Deah Me!



Formation.



Claude N.
(Ed-in-Chief)



Ata' Boy!



We Rookies.



H₂S.



Just 3/4 the battle Mother!



son of toil.



Eva.



A Midget.



Cops.



The Other
Midget.



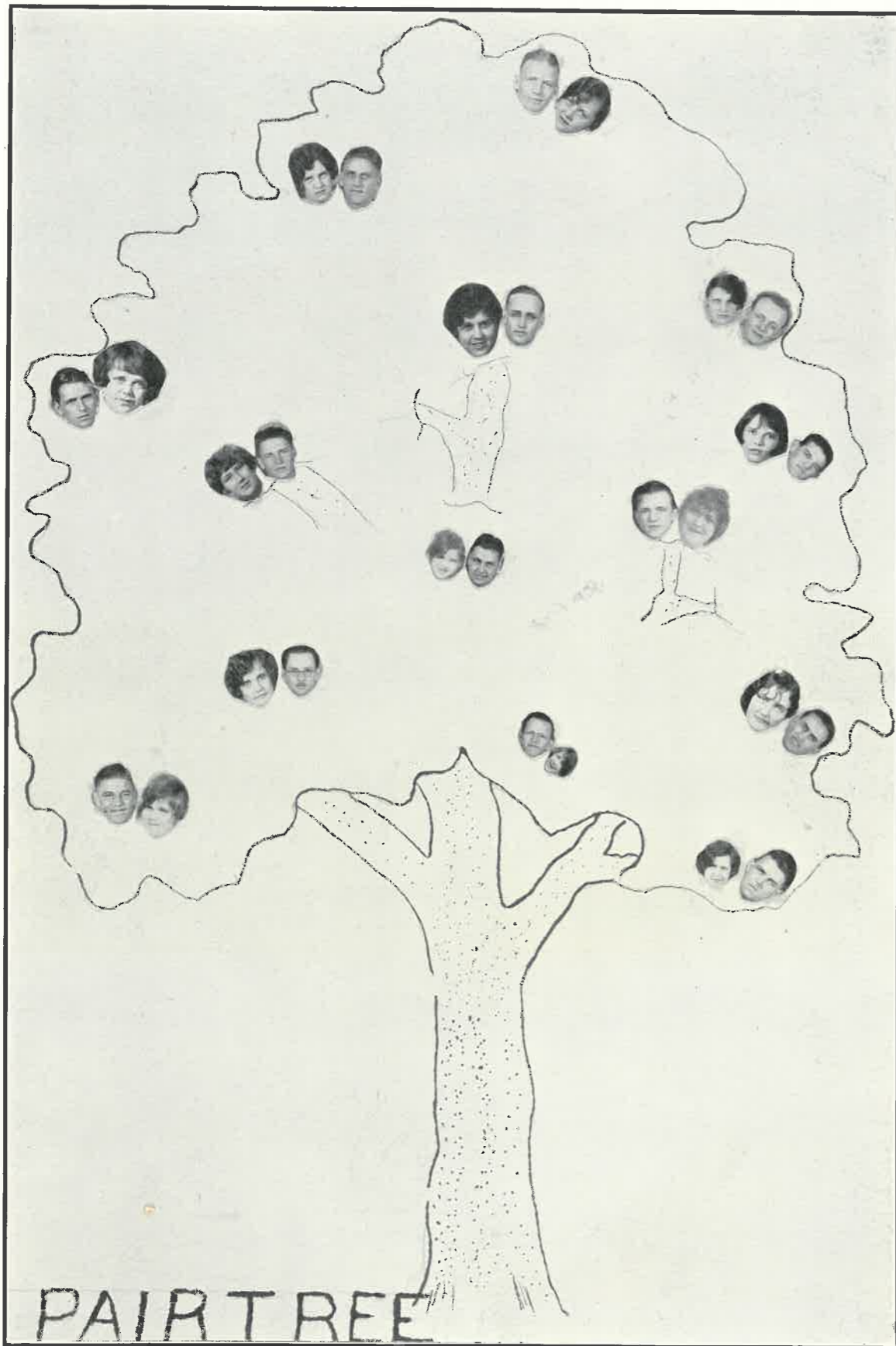
You Win.



CAPTAIN! My
captain!



The Dorm or
Bust!



BUGHOUSE FABLES AND OTHER RARE SPECIMENS

Preusse broke.
 Edwards, Baldy, and Burton leaving the Dorm at three P.M.
 No idlers in the postoffice.
 Pi and Gam reunion.
 Pee Wee speechless.
 Smitty on the bench at a college dance.
 A dormitory flower refusing a show at the Fargo.
 Studying between halves at a Concordia-Ped basket-ball tilt.
 A. Gludt or L. Ruebke playing solitaire.
 Sand at a show the night before a final test.
 Syver unable to escape from the Dormitory.
 Shang studying at an all-school dance.

Skip—What will I do?
 Polly—Either drown your prof or give him a line.

The last time Mrs. Moore was in Cairo a waiter short-changed her five dollars. Egypt-her, see?

Chet Westberg is noted for his sox appeal; he has IT in large globules.

"On a dew, dew, dewy day"
 I found "Among My Souvenirs"
 "Just a Memory" of a Pi and a Gam.
 I sang "Give Me a Little Kiss,
 Will Yuh, Huh?" It was
 "Just Before the Battle, Mother";
 Then I was "Too Tired,
 So it was "Just Another Day Wasted
 Away". "Good Night, Ladies" I sang,
 And "Red Hot Henry Brown" had to
 "Show Me the Way to Go Home."

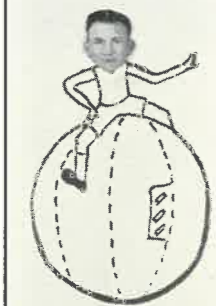


Ruth—Did he ever tell you about his forbears?
Clara—What? Is he an animal trainer?

In the spring a young man's fancy turns to what the women have been thinking about all winter.

Erickson's bakery is noted for its "Jelly" rolls.

Miss Bieri—Why don't you answer my question?
Paul B.—I shook my head.
Miss B.—Yes, but I can't hear it rattle from here.



Vic Friedlund is to take a collegiate tour of Little Italy next summer.

Prof. Archer in lecture: "Yes, the Educational Association of New Zealand puts out a year book every day."

Allen E.—Lend me your comb. I'm going to call up my girl.

"The bathtub over at our house has been broken for over a month."
"Why haven't they fixed it?"
"I'm the only one who has found it out."

Zech—I'm the ideal campus man, perfect in every respect.
Ike—Oh, you lie.
Zech—Yes, that's my one fault.



Vic Friedlund in book store: "Lucile, most worthy money-taker and clerk, which is more valuable—a five dollar gold piece or a five dollar bill?"

Lucile: "A five dollar bill, because when you put it in your pocket you can double it."

Vic: "Yes, and when you take it out you will see it in creases."

Prof. Ballard—"I believe you missed chemistry class this morning, young man."

Burton—"Oh, no, Sir, not in the least."

Melly Johnson—"How is it you have such a long nose?"

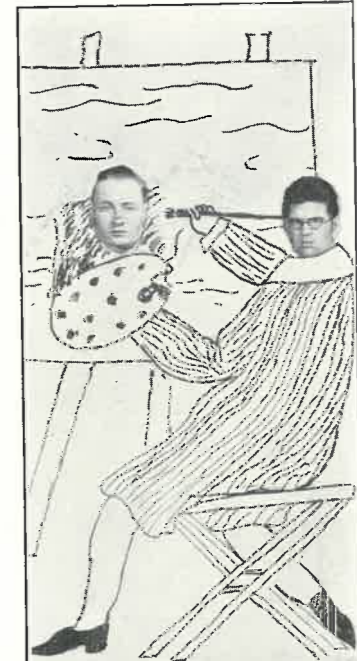
Lowry—"I keep it out of other people's business and let it grow."

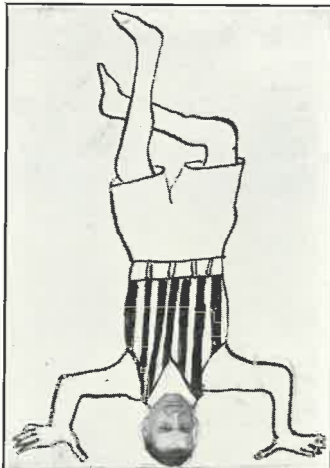
He is only a crumb, but he surely has his crust.

"Ain't love grand?" sighed Harold Sand as he hummed "The Schwandt Song" to himself.

Townsend, the Brilliant, was ruminating one day.

Said he, "I could have been the outstanding student at Oxford. I was a good athlete, and I could have been ahead in Latin, Greek, and all other studies, but for one accident—I never was at Oxford."





It's funny Harold Preusse is so unsuccessful in love, since it's only a little crust and a lot of applesauce.

Little Bells have big Rings.

Miss Gibbon—Who was the first man.
Olive Ranes—Eve.



Baldy may be no minister but he certainly knows his Grace.

"May I hold your palm Olive?"
"Not on your Life, Buoy."
"Then I'm out of Lux?"
"You sure are. Ivory formed."
—(Purple Parrot.)



Claude Nemzek was lecturing to his class in the training school on the route spices were sent through the Mediterranean Sea. When he had finished his carefully prepared address, one bright pupil remarked, "Beg pardon, Sir, but I didn't hear the last remark about the manual training sea."

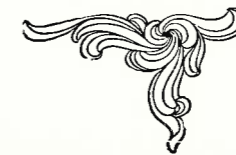
Tee Wee—What's the difference between marching and dancing?
Smitty—I don't know.
Tee Wee—I thought so.

Miss Leonard, in Geometry—Where do you get constants?
Botts—4627.

FOREWORD

THE following pages are devoted to the most progressive business men in Fargo and Moorhead. The Praeceptor Staff sincerely hopes that the students and the readers of this book will kindly read the following advertisements with a great deal of zeal and thought. Although the pages in this section are not interesting in themselves, they reveal a large number of truths. In the first place, the business men of Fargo and Moorhead heartily agree with the slogan, "It pays to advertise". A survey of the business firms of Fargo and Moorhead would lead the reader to conclude that the most up-to-date business men of these two towns are advertisers in the 1928 Praeceptor.

Undoubtedly the following firms are convinced that advertising in a college annual is not a gift. Furthermore, the staff feels certain that the students of the Moorhead State Teachers' College appreciate the loyal support of the business men, and as a result students of M. S. T. C. will patronize the firms advertising in this annual.



Martinson's Jewelers

OPTOMETRISTS

"Gift Wares"

Our Gift Room is the choicest shopping spot in the two cities. ❁ ❁ ❁

4th Street and Center Ave. MOORHEAD, MINNESOTA

Quality Merchandise at Moderate Prices

HANSEN JEWELRY STORE

"NEUBARTH'S"

N. P. R. R. Watch Inspector

FUSFIELD'S

That which is new in Season whether your wants are for a Coat, Dress, Suit, Ensemble, Fur Coat or a Hat, you can always find it at Fusfield's at the Most Popular Prices

120 BROADWAY

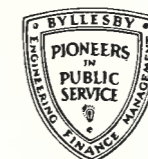
FARGO, NORTH DAKOTA

Knowledge and Power

The present widespread utilization of Electric Power has been achieved by combining with the initiative and resourcefulness of public service pioneers the knowledge gained in the laboratory of the scientist and in the study of the scholar.

NORTHERN STATES POWER COMPANY

*Every Sixth
Customer a
Shareholder*



*Personal
Attention to
Every Customer*

LITHERLAND'S

STUDENT HEADQUARTERS
FOR FOOD

If your needs are in the
food line we can
supply that
need

Hubert Zervas

Meat Market

FISH and OYSTERS
In SEASON

Meats and Sausages Shipped
by Parcels Post to Our
Country Costumers

Country Shipment of Veal and Poultry
Solicited

MOORHEAD, MINN.

American Amusement Company

FARGO NORTH DAKOTA
and
MOORHEAD MINNESOTA

Operating

The Fargo (featuring the Vitaphone)

The State (latest photoplays)

The Moorhead (just opened)

The Garrick (popular prices)

DR. PAUL CLARKE
DENTIST



First State Bank Bldg.

PHONE - 42W

Home Bakery

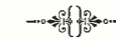
J. S. ERICKSON, Prop.

Phone No. 1329W

518 Center Avenue

THE GLOBE

GOOD CLOTHES
FOR YOUNG MEN



The Home of
Kuppenheimer



Broadway at First Avenue

Fargo, North Dakota

Maryland Cafe

THE HOME OF
THE STUDENTS

Sandwiches, Pies, Cakes
and Good Coffee

"WE AIM TO PLEASE"

O. E. DREWS, Proprietor

MOORHEAD, MINN.

Eastman Kodaks

Liggett's Candy

MOORHEAD DRUG COMPANY

THE REXALL STORE

Phone 1919

ICE CREAM AND SODAS

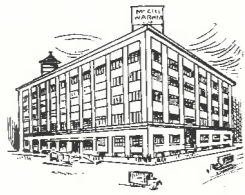
LUNCHEONETTES

506 Center Avenue

Moorhead, Minnesota

<p>KIEFER AUTO COMPANY</p> <p>CHEVROLET</p> <p>Moorhead, Minnesota</p>	<p>Dr. G. L. Gosslee</p> <p>PHYSICIAN and SURGEON</p> <p>MOORHEAD - MINNESOTA</p>
<p>Fargo Mercantile Co.</p> <p>Wholesale Grocers and Coffee Roasters</p> <p>Fargo, North Dakota</p>	<p>Thon's Shoe Hospital</p> <p>CARL THON, Prop.</p> <p>4th Str. and Center Ave.</p>
<p>Office Phone 778W Res. 778 R</p> <p>Dr. H. D. Rostad</p> <p>DENTIST</p> <p>Room 6 Gletne Blk.</p> <p>MOORHEAD MINNESOTA</p>	<p>Why Freeze While Lamb has Coal</p> <p>PHONE - 415</p> <p>Moorhead, Minnesota</p>
<p>Nord Furnace Co.</p> <p>Warm Air Furnaces Auto Radiators</p> <p>Skylights Sheet Metal Work We heat: churches, schools, garages, etc.</p> <p>Roofing</p> <p>Ventilation Repairing and Recoring</p> <p>Moorhead, Minnesota</p>	<p>Dr. O. J. Hagen</p> <p>PHYSICIAN and SURGEON</p> <p>Moorhead National Bank Building</p>

<p>FURS, READY - TO - WEAR and MILLINERY</p> <p>Style and Quality at Moderate Prices</p> <p>SHOP AT</p> <p>JOSEPH'S</p> <p>59 BROADWAY FARGO, N. D.</p>	<p>We have the most complete line of toilet goods in the two cities.</p> <p>Consult our toilet goods department when in doubt as to just what you should use.</p> <p>LADY CLERK</p> <p>Cook Drug Company</p> <p>61 BROADWAY, FARGO, N. D.</p>
<p>Golden Maid Shoppe</p> <p>"The Home of Service and Quality"</p> <p>Soda — Candy — Lunch</p> <p>This is one shop where sweetmeats of quality are served in a way most dainty and tasty.</p> <p>68 BROADWAY Fargo, North Dakota</p>	<p>Phone 890W</p> <p>Dr. B. T. Bottolfson</p> <p>Surgeon and Urologist</p> <p>First State Bank Bldg.</p> <p>Moorhead, Minnesota</p>
<p>Phone 854 Residence Phone 5597W</p> <p>Dr. J. H. Sandness</p> <p>DENTIST</p> <p>First State Bank Bldg.</p> <p>Moorhead, Minnesota</p>	<p>Moorhead Laundry</p> <p>Tel. 1213</p> <p>120 5th Street North</p> <p>ONE DAY SERVICE</p> <p>Free Repair Service</p>
<p>When you decide to furnish your home, see us for best values at lowest prices.</p> <p>YOUR CREDIT IS O. K.</p> <p>Phone night or day 63W</p> <p>Leo Johnson Furniture Co.</p> <p>604-606 Center Avenue</p>	<p>JOHNSON CANDY COMPANY</p> <p>WHOLESALE</p> <p>High Grade Candy Specialties</p> <p>MOORHEAD, MINNESOTA</p>



CRAFTSMANSHIP

plus

Adequate Mechanical Facilities

MODERN PRIZE WINNING YEAR BOOKS are not the result of haphazard preparation. Early consultation with the Annual Department of this company will insure proper procedure and the utmost value for the budgeted expenditure. :: ::

"Quality, not quantity is the medium that moves men's minds." :: ::

The McGill-Warner Co.
SAINT PAUL

For GOOD THINGS
To EAT or DRINK

GO TO

COLLEGE CLUB

Mrs. M. P. Urness, Prop.

BAKING DONE TO ORDERS

1010 7th Ave. South
Moorhead

Phone 3446W
Minnesota

THE CENTER OF SHOE ATTRACTION!

Where else but this store can you find anything so Beautiful and Charming in footwear?

\$5⁰⁰ K^ollege F^or \$6⁰⁰
Kⁱcks M^en

R. & G. BOOTERY

FARGO, NORTH DAKOTA

For Mother's Kind of Cooking

Eat at

Bluebird Coffee Shop

E. M. Pederson, L. A. Benson
Proprietors

618 Center Avenue

MOORHEAD,

MINN.

First and Moorhead National Bank

OF CLAY COUNTY
MOORHEAD, MINNESOTA

Resources over \$2,500,000.00

S. G. COMSTOCK - - - Chairman of the Board
H. E. ROBERTS - - - President
O. MARTINSON - - - Vice President
GEO. M. COMSTOCK - - - Vice President
O. B. RUSNESS - - - Cashier
E. S. PETERSON - - - Asst. Cashier
P. V. DWYER - - - Asst. Cashier
A. W. HEDLUND - - - Asst. Cashier

The Largest Bank in Western Minnesota Offers a Complete Banking
Service in All Departments

The Students' Store

You Get Value for Your Money

at

Black's

WHERE YOU ALWAYS FIND THE CROWD

Fargo,

North Dakota

Always First With The New

Pederson Agency Inc.

INSURANCE
BONDS

"TO BE SURE - - INSURE"
5 South 4th Street Moorhead, Minnesota
Telephone 4994

GIVE FLOWERS

FOR WEDDINGS, BIRTHDAYS, ANNIVERSARIES,
REMEMBRANCES, ETC.

A GIFT OF FLOWERS, BECOMES A MARK OF SOCIAL
"GOOD TASTE" WHEN IT BEARS A TAG FROM—

Phone 762 BRIGGS FLORAL CO. Moorhead

LEO KOSSICK

Confectionery
The Place of Clean Recreation
Latest scores
right off the Western Union wire
Phone 657

THE

FEVIG-JESTEN AGENCY

Insurance Bonds Real Estate
Telephone 1962, Moorhead, Minn.

QUALITY MERCHANDISE

FAIR PRICES

You'll Do Best at Houghlum's

This store is noted for its fairness and its atmosphere of welcome and
character by all who have had occasion to give us their patronage.

WE WOULD APPRECIATE A VISIT FROM YOU

HOUGHLUM FURNITURE COMPANY

Center at Fourth, Moorhead, Minn.

HANNAHER & O'NEIL

Incorporated

Wholesale Grocers

Moorhead

Minnesota

HARRIS BROTHERS

Jobbers and Dealers in

FARM IMPLEMENTS

STUDEBAKER AND STAR AUTOMOBILES

MOORHEAD Phone 648 MINNESOTA

No more tight stiff shoes. Ladies' soles cemented on with our
Standard Hydro Press; no nails, flexible soles, and look like new.
All work guaranteed. We do not cobble; we rebuild.

Shoes made to order for crippled feet.

MOORHEAD SHOE HOSPITAL

C. W. Soule, Prop.

DOMMER BUILDING, 17 5th St. So.

Phone 214W

For Mother's Kind of Cooking
EAT AT THE

Blue Bird Cafe

Metropole Hotel

A. A. Lee, Prop.
Mrs. A. A. Lee, Mgr.

515 N. P. Avenue

FARGO, NORTH DAKOTA

T. C. Wilson

Watchmaker and Jeweler

712 Center Ave.

MOORHEAD MINN.

Dr. F. A. Thysell

EAR EYE NOSE

Specialist

American State Bank Building

MOORHEAD, MINN.



Compliments of

The American State Bank

Moorhead, Minnesota



Photos and Application
Pictures at a Moderate Price

Satisfaction Guaranteed

A. R. Scherling

(OWL STUDIO)

113½ Broadway, Fargo, N. D.

STYLE! QUALITY!

\$2.98 to \$5.85 None Higher at

Tradehome

103 Broadway

FARGO, N. D.

DR. V. E. FREEMAN DENTIST

First and Moorhead
National Bank Block Building

Evenson's

GROCERIES DRY GOODS
NOTIONS CROCKERY

Telephone - 529
MOORHEAD, MINN.

Comstock Billiards

F. A. KOEPP, Prop.

Moorhead Minnesota

HOME GROWN FLOWERS

Shotwell Floral Co.

35 YEARS OF LEADERSHIP
Broadway and Front St. Fargo

Short Cuts to Beauty

You've heard the talk

THE

COMSTOCK BARBER SHOP
MOORHEAD, MINN.

SOUTHSIDE

BARBER SHOP

G. A. Saumweber, Prop.
Plain and Shower Baths
MOORHEAD, MINNESOTA

MOORHEAD HARDWARE

The Winchester Store

WE SPECIALIZE IN

Athletic Goods, Paints, Oils
And Builders' Supplies

422 Center Ave. Phone 2215

W. M. NESHEIM

DRUGS

School Supplies - Soda Pullman
Radio - Edison Phonographs

First National Bank Building
MOORHEAD, MINN.

THE OLDEST BUSINESS HOUSE IN
THE RED RIVER VALLEY
ESTABLISHED 1873

B. F. MACKALL, Inc.

DRUGGISTS

Books, Stationary and School Supplies
Perfumes and Toiletries
Engraved Calling Cards

510 Center Avenue
MOORHEAD, MINN.

STYLE QUALITY SERVICE

We feature

Clothes for Young Men

The Palace

ACROSS FROM CITY HALL

MOORHEAD MINN.

THE HANSEN COMPANY
SCHOOL STATIONERS AND JEWELER

The only steel die and copper plate engravers in the Northwest
SEND FOR SAMPLES OF OUR WEDDING ANNOUNCEMENTS

BOX 26

FARGO, NORTH DAKOTA

You will enjoy all of our
Unique Creations in Ice
Cream

Illustrated Booklet
No. 28 Gladly
Mailed Upon Request

The
Fairmont Creamery Co.
Moorhead, Minnesota



Try FAIRMONT'S
Special
this week

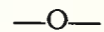
Ladies
Rest Room

Phone
1041

MEET YOUR FRIENDS AT
MILLS-PORTEUS DRUG

Just What Your Doctor Orders

504 Center Avenue



Moorhead, Minn.

Mark of  Quality

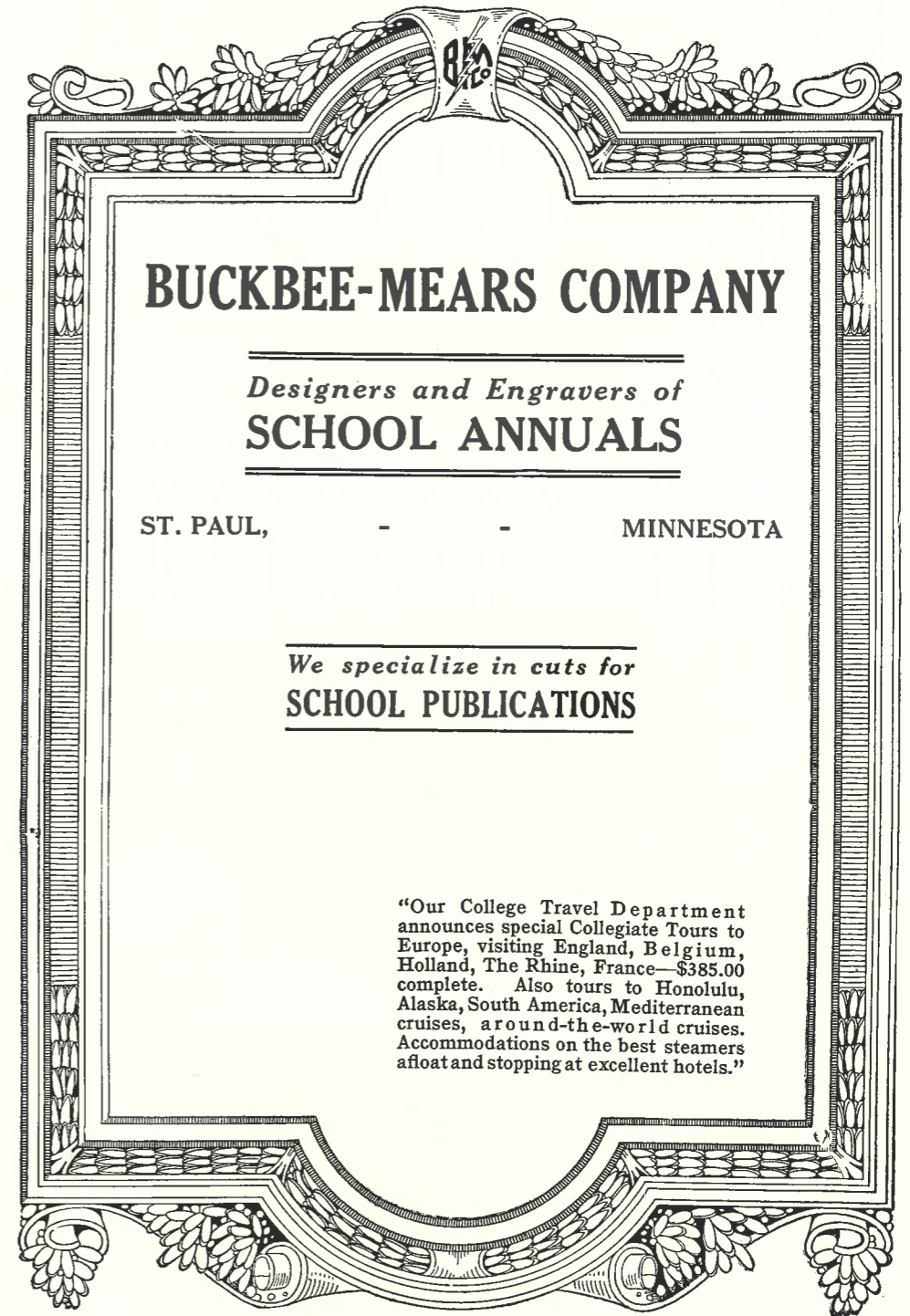
FARGO JEWELRY MFG. CO.

SCHOOL STATIONERS

Medals, Trophies, Class Rings and Pins

FARGO,

NORTH DAKOTA



BUCKBEE-MEARS COMPANY

Designers and Engravers of
SCHOOL ANNUALS

ST. PAUL, - - MINNESOTA

We specialize in cuts for
SCHOOL PUBLICATIONS

"Our College Travel Department announces special Collegiate Tours to Europe, visiting England, Belgium, Holland, The Rhine, France—\$385.00 complete. Also tours to Honolulu, Alaska, South America, Mediterranean cruises, around-the-world cruises. Accommodations on the best steamers afloat and stopping at excellent hotels."

ACKNOWLEDGEMENT

BEFORE putting this book aside, the reader is asked to go another step with the staff. During the course of the year, certain faculty members have co-operated with the staff in order to make the 1928 Praeceptor a success. The 1928 Praeceptor Staff wishes to dedicate this page to the following people as a token of gratitude and thanks:

First, Mr. Byron Murray, faculty advisor of the book, who has worked with the staff throughout the year.

Second, Mr. W. C. White, who has supplied the 1928 Praeceptor with many of the excellent photos and views printed in this book.

Third, Miss Margaret McCarten, who has helped the staff with many problems concerning the art work.

Fourth, Mr. S. A. Hamrin, who organized the Flying Squadron in order to increase the number of subscribers for this annual.

