



Linfield College
DigitalCommons@Linfield

[Bjelland Winery Documents](#)


[Bjelland Winery Collection](#)

May 2015

"Quality Goal at Bjelland Vineyards" Article

Paul Bjelland

Follow this and additional works at: https://digitalcommons.linfield.edu/owha_bjelland_docs

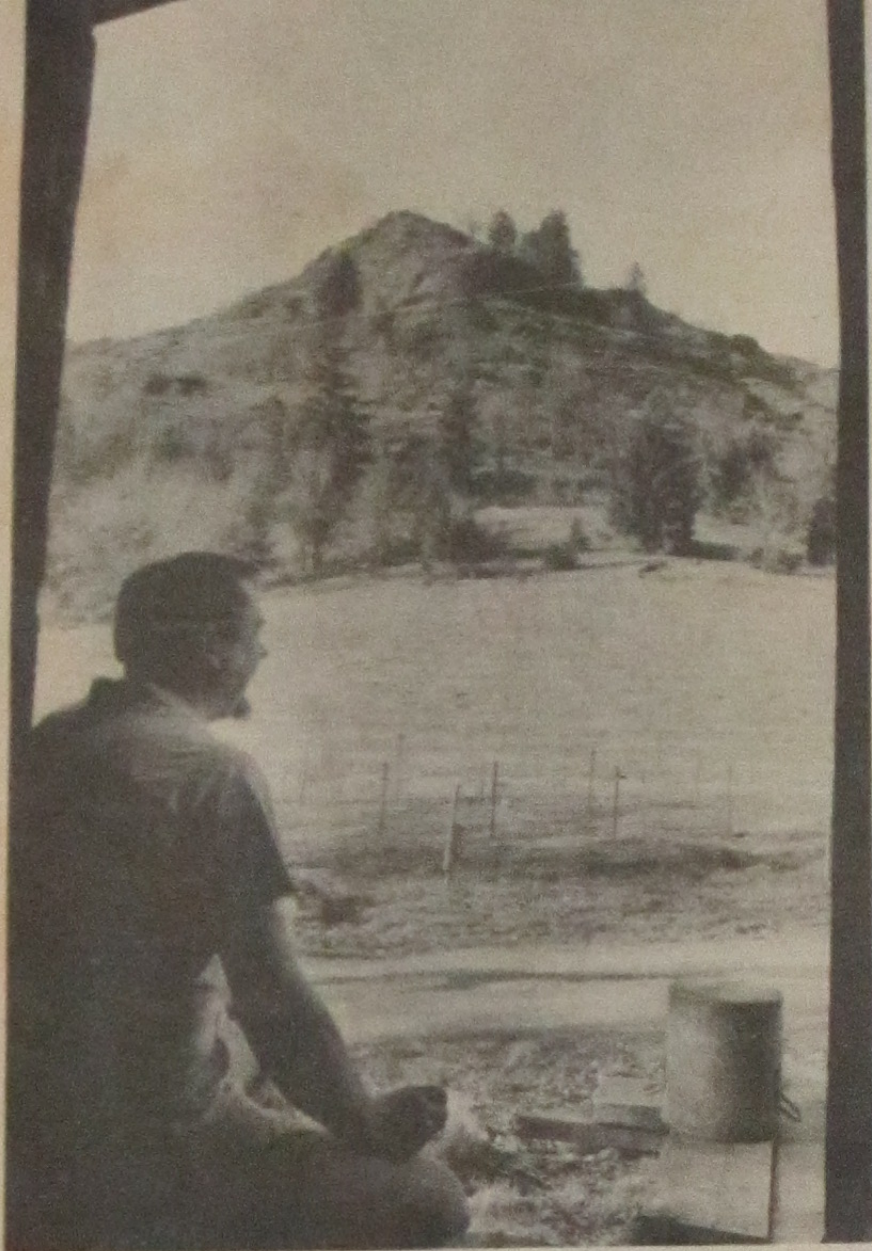
 Part of the [Viticulture and Oenology Commons](#)

Recommended Citation

Bjelland, Paul, ""Quality Goal at Bjelland Vineyards" Article" (2015). *Bjelland Winery Documents*. News Article. Submission 13.

https://digitalcommons.linfield.edu/owha_bjelland_docs/13

This News Article is protected by copyright and/or related rights. It is brought to you for free via open access, courtesy of DigitalCommons@Linfield, with permission from the rights-holder(s). Your use of this News Article must comply with the [Terms of Use](#) for material posted in DigitalCommons@Linfield, or with other stated terms (such as a Creative Commons license) indicated in the record and/or on the work itself. For more information, or if you have questions about permitted uses, please contact digitalcommons@linfield.edu.



Paul Bjelland, a Tenmile school teacher, is among small but growing group of Douglas County residents who have tied their star to the goal of developing a wine industry. In photo, Bjelland from his barn

can look out upon a landmark rock which has become an identification symbol for the Bjelland Vineyards and its wine products. The rock is featured on all labels of Bjelland Vineyard wine.

Quality Goal At Bjelland Vineyards

By PAUL BJELLAND

Established in 1968, Bjelland Vineyards are dedicated in producing award-quality table wines. Presently planted are 28 acres of Vinifera grapes such as Cabernet Sauvignon, Chardonnay, Gamay Beaujolais, Johannisberg Riesling, Chenin Blanc, Gewurtztraminer, Pinot Noir, Pinot Blanc, Zinfandel, Semillon and Sauvignon Blanc. Also under development are eight acres of long-term (thirty years) lease land.

Located off Highway 42, two miles north of Tenmile on historic Reston Road, the vineyards can be identified by the very high rock which is visible for a great distance. The rock is featured on all labels of Bjelland Vineyard wine.

In the midst of the vineyards is the Sample and Sales Room which was built from century old boards and nails. Samples of Johannisberg Riesling (dry, white, varietal Rhine wine), Vin Rose (pink, dry wine, for all reasons), Mountain White Wine (a Rhine wine of the Liebfraumilch type, and less dry), and May Wine (flavored with the German touch), may be sampled. White Cooking Wine is also available for those gourmet feasts. Hours for the Sample and Sales Room are 11 to 6, Saturdays and

Sundays, or call 679-6950 for special arrangements. Home winemaking supplies and advice are also available.

The wine is aged in 50-gallon oak barrels and bottled while the wine is still young and fresh.

Future objectives of Bjelland Vineyards are (1) to develop a foundation block for future sale of certified cuttings, (2) to have a fireplace for cool, wintry days and to have air conditioning for warm summer days in the Sample and Sales Room, (3) and also to construct new and larger winery facilities.

Highlights of Bjelland Vineyards progress are (1) Granting of Oregon Bonded Winery 47 license in 1969, (2) Approval of Sales License by the Oregon Liquor Control Commission in 1970, (3) Grand opening of the Sample and Sale Room Oct. 11, 1970, with 300 visitors, (4) First bottle of Johannisberg Riesling sold to Dr. Gene Martin of the University of Oregon who says, "This is one of the finest Johannisberg Riesling I have ever tasted, and I have lived in many wine producing regions.", (5) The 5,000th bottle sold to A. D. (Deb) Addison, president of the Roseburg Chamber of Commerce, April 3, 1971.

Official publication of Bjelland Vineyards is "Vitis Vinifera NUZ" (translated Pure Grape Wine News).

