



MURRAY STATE
UNIVERSITY

Murray State's Digital Commons

Murray State University Yearbooks

Digitized Collections

1937

The Shield 1937

Shield

Murray State University

Follow this and additional works at: <https://digitalcommons.murraystate.edu/yearbooks>



Part of the [Higher Education Commons](#), and the [Social History Commons](#)

Recommended Citation

Shield, "The Shield 1937" (1937). *Murray State University Yearbooks*. 74.
<https://digitalcommons.murraystate.edu/yearbooks/74>

This Book is brought to you for free and open access by the Digitized Collections at Murray State's Digital Commons. It has been accepted for inclusion in Murray State University Yearbooks by an authorized administrator of Murray State's Digital Commons. For more information, please contact msu.digitalcommons@murraystate.edu.

Shiloh

N I N E T E E N T H I R T Y S E V E N



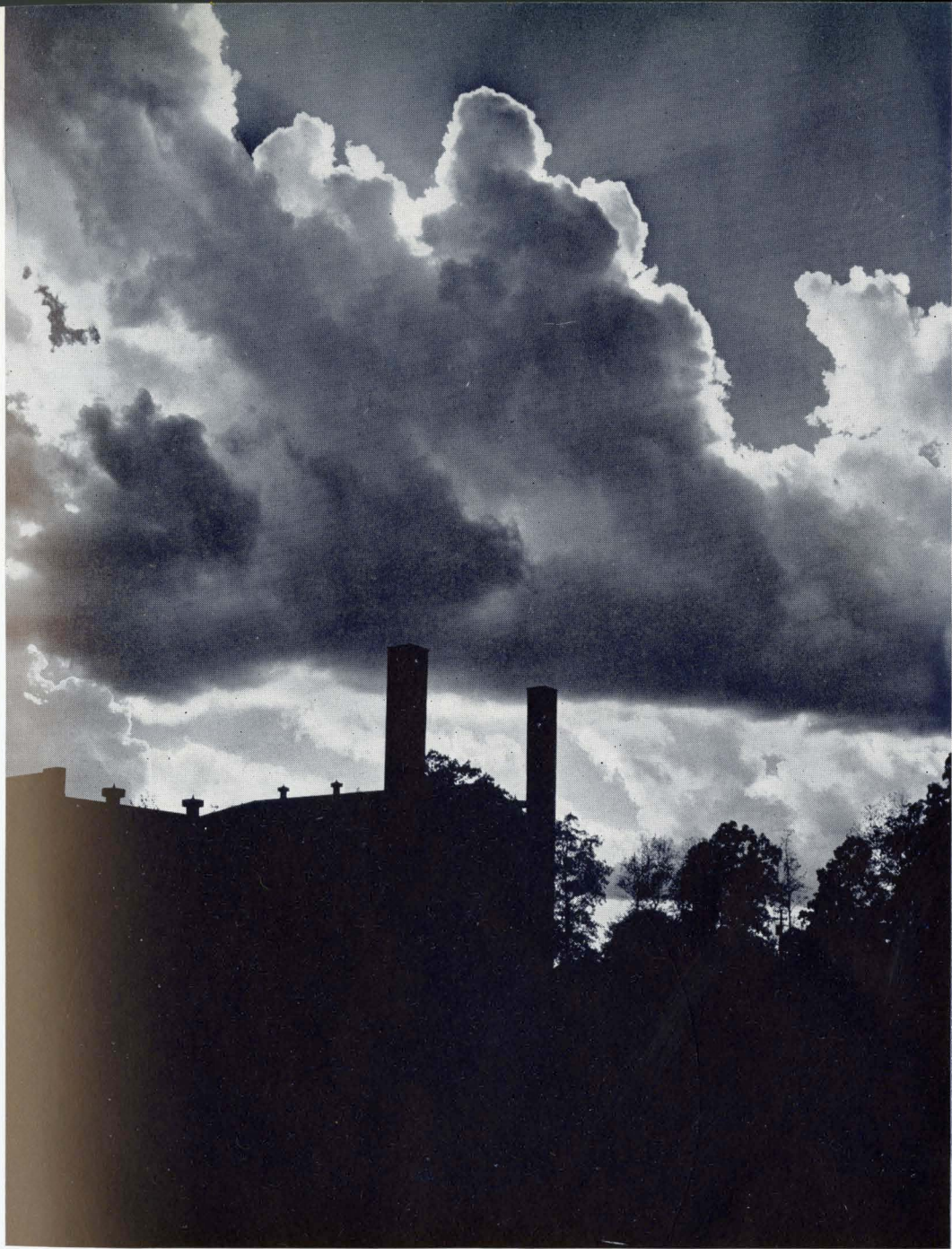
The

PUBLISHED BY THE SENIOR CLASS

« « COPYRIGHT, 1937 » »

BOB BLAESER, EDITOR • BILL CARRIER, BUS. MGR.

LOCATED AT MURRAY



SHIELD

IN WESTERN KENTUCKY

Lepicting



W H E R E D E M O C R A T I C

the Year

OF 1937

AT MURRAY STATE



ATMOSPHERE PREVAILS

Be Honor

P U R P O S E : T O U N I F Y

For Its Service . . .

The Student Organization which has so diligently and so commendably worked for the interests of Murray State College . . . Magnificent in conception, sterling in execution, dedicating its energies to unity and to growth, it paragon the ideal of student government for which it had incipience. . . . To Cecil Gentry, its first president, and to the members of its first executive committee who gave unstintingly of time and effort to make and maintain an organization of strength and power, the Shield extends its deep and earnest felicitations. . . . In such organization of students, Murray State College may the more quickly realize the splendid goal toward which it has thus far so nobly striven. . . . Hope, Fortitude, Ambition, Strength, Courage—Love, Loyalty, Growth, Spirit, Achievement—those are symbols of any age or any effort. . . . Student Government . . . Students . . . Thoroughbreds. . . .

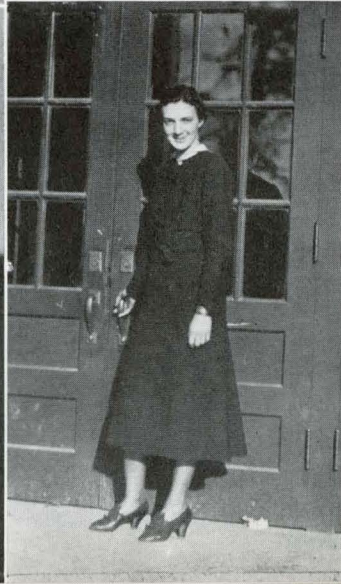
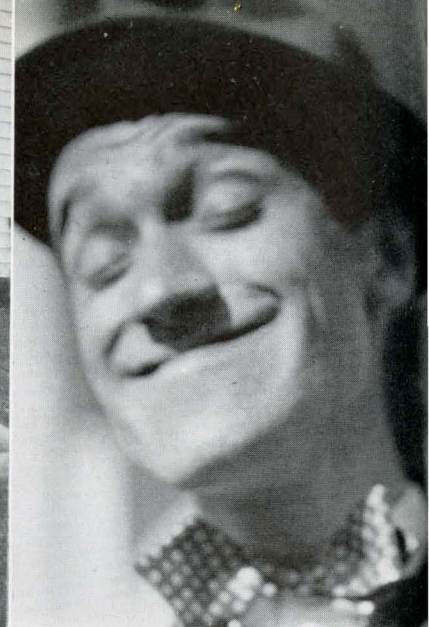
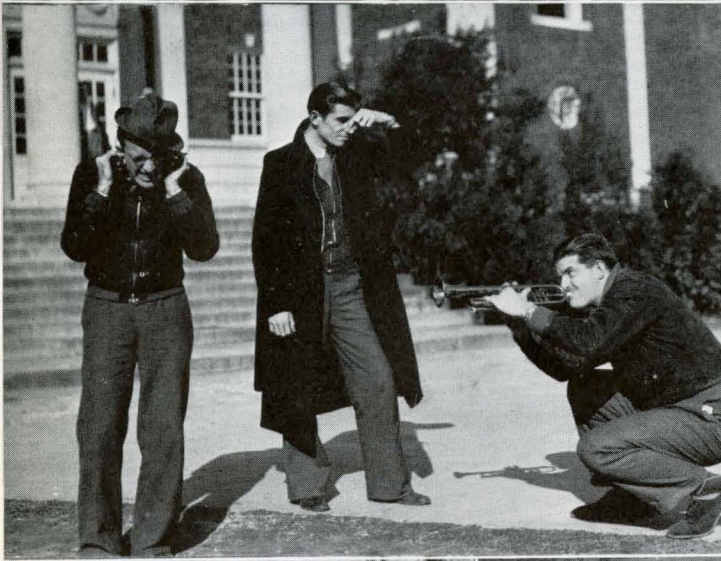


T H E S T U D E N T B O D Y

The Shield brings you this year another new section—delightful, entertaining, stimulating—the Hodge Podge section. It is as fresh and invigorating as it is novel and educational. Herein you will find an exact portrayal of outstanding deeds and actions—pure, clean, and worthy of their space.

Snapshots of real men and women—college life laid bare . . . pictures of leaders . . . sayings and quotations of wise men . . . members of the Executive Council who were tried and found true . . . within is found the Trash Pot depicting the characters of students and faculty without regard to station or degree in life . . . Shield Staff . . . a worthy group of hard-working college men and women . . . College News Staff . . . dependable . . . able . . . news hounds . . . Debaters forceful, courageous . . . Music . . . The College Band . . . best in the S. I. A. A. and masters of their profession . . . Laughter . . . Tears . . . Joy . . . Pains of regret. . . . The Hodge Podge brings you nearer to the warm, close hospitality of Murray College and all its traditions.

HODGE PODGE



The

Well girls whatchall doin?—We don't believe it—The face you love to . . . oh well let it go—Boo! Thompson—Looks like a leg show—Mr. Freeman and the College Snooze—Well boys whatcha see?—Who is she, Goheen?—Hamby in pensive mood—Whatta teacher.



CAMPUS IN PICTURES

Frozen knowledge—on a bicycle built for one—sit down easy, it's pretty cold going to town—thats what we learned at college—it gets pretty cold and hard after so long a time—careful boys, something seems to be wrong—and to think boys once this tree had beautiful green leaves on it.

Some pull I'd say—careful girls here we come—oop's—someone must have moved the ice from under Betsey, she foo'ed em though—S'matter Cap did it hurt?—come out of those bushes, it's too cold—well Draff Hoss holding down the hedge?—it's cold in the old musicians home.





TOPS . . .

IN THEIR RESPECTIVE

SCIENCE AND ART—Jane Melugin combined a brilliant mind with faculties that made her outstanding in practically every field—especially science and senior artistry. A gifted artist, a clever scholar, she merited her every honor.

SCIENCE—Flavius Wyman contributed much to the science department of the college. In his work he was industrious; in his studies capable—truly an outstanding scientist.

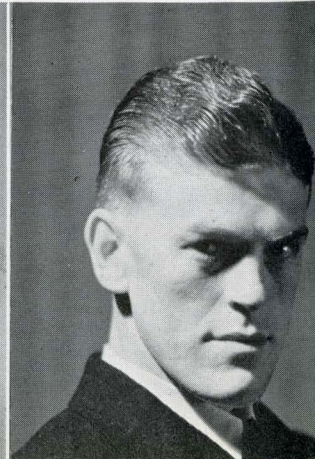
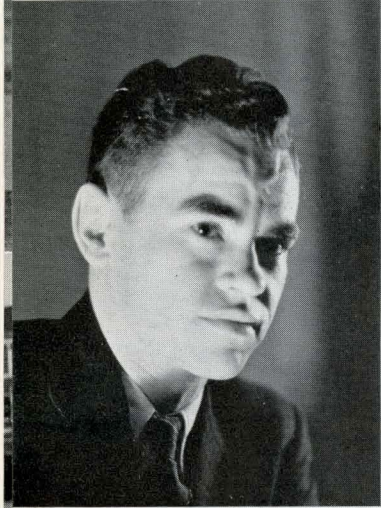
DEBATING—L. C. Litchfield had an answer for every proposition, and for every “why?” A powerful personality, a forceful speaker, no better debater ever wore the blue and gold. Oxford University, Texas Christian, Western, and others felt the vitriol of his lashing wit.

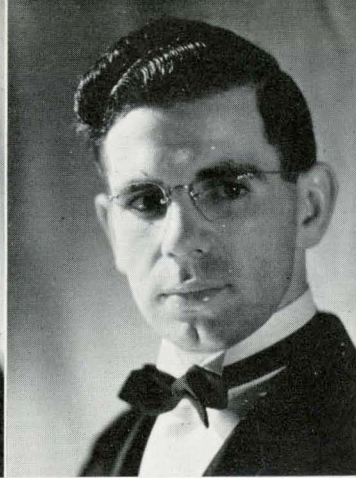
JOURNALISM—Sam Neely, editor, varsity debater, constitutional committeeman of Student Government, and a thorough scholar, deservedly has earned the tribute and title of outstanding journalist.

LEADERSHIP—The students of Murray State College, 100 per cent back of their new institution of Student Government, elected Cecil Gentry as their first President. He served them more than well. Varsity debater, Training School debate coach, and honor student, and a great fellow are only a few of the plaudits which are Gentry’s due.

LIBERAL ARTS—Hickman gave us J. Samuel Shelby, playwright, producer, scholar, and aspirant to the ministry. A pleasing personality and a wide knowledge are qualities possessed by Shelby.

BASKETBALL—The teammates of Floyd Burdette, co-captain with Ethridge McKeel of the 1938 Thoroughbred basketeers, all S. I. A. A. forward in 1937, member of the S. I. A. A. championship squad of 1936, could not have selected a player more meritorious of the distinction: outstanding basketball player.





FIELDS . . .

AS CHOSEN BY FACULTY AND STUDENTS

JOURNALISM—Edward Freeman was chosen with Sam Neely as outstanding in journalism because of his industry and his qualities of leadership which are listed under his picture in the Senior Class group.

MUSIC—Margaret Marshall, talented, and showing the true musician's versatility in the field. Competent, likeable, noticeable, and gracious. A true musician.

MUSIC—Floyd McClure, powerful in technique, a man who has made a name for himself at Murray. A senior, student organization man, a fine character, an all-around fellow. His honors are justly deserved.

SCHOOL SPIRIT—Full of enthusiasm, vibrant with energy, cheerful when the prospects for victory were darkest—that was Bob Blaeser, cheer leader, student leader, editor of the Shield, and prominent dramatist.

FOOTBALL—Herman Land, all S. I. A. A. tackle in 1936, was the spark of Murray's splendid group of Thoroughbred football power in 1936.

DRAMATICS—From Birmingham, Ky., came Luther T. Goheen, who ought to be in Hollywood, where names of good actors are mentioned, Goheen's comes first of all. An honor graduate, a patron of books, a capable leader with a keen esthetic sense—that was Goheen.

ART—Bill Carrier has carried away all the honors the art department had to offer, and a wad of extra honors besides—music, dramatics, scholarship, practical organization ability. As a senior artist, he rated tops.





OFFICERS

President . . . ROBERT CECIL GENTRY
Vice-President . . . SUE GUNTER
Secretary . . . DUTCH TANNER
Treasurer . . . HOWARD SLAYDEN

THE EXECUTIVE COUNCIL

President: Robert Cecil Gentry—A senior, whose place will be hard to fill. The first president of the Student Organization has done a noble job and has led us through the first year which is so dangerous to any movement or organization. Hats off to you, Robert Cecil.

Vice-President: Sue Gunter—Another Tennessee graduate of a Kentucky school. Sue has given life to the Organization, a sensible girl who has kept the Student Organization on its toes. Who said beauty and brains don't go together?

Secretary: Dutch Tanner, Senior—Dutch has given of her time and talents to the Student Organization. They say all girls talk a lot. We were certainly glad to find one who took it out in writing. Congratulations, Dutch.

Treasurer: Howard Slayden—Senior. Here is the important man. Money is a valuable thing, especially in these days. Howard is the man who says yes and no when it comes to turning loose the cash. Nice going, Howard.

Senior Representatives: Floyd McClure and Sam Boyd Neely. Mac was ill when the picture was taken but when it came to the work he was right there. Sam Boyd is the boy who talks all the time, the Organization made progress between speeches by Neely.

Junior Representatives: Frank Jones and James Allison. These boys are inseparable. When it comes to talking these boys are right in there doing their part. They will be back next year and watch their smoke when the school year gets in swing.

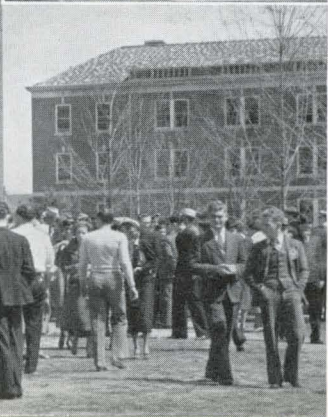
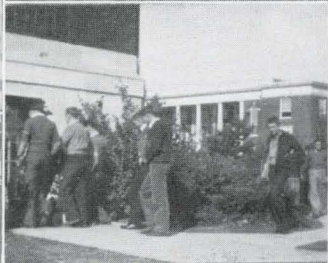
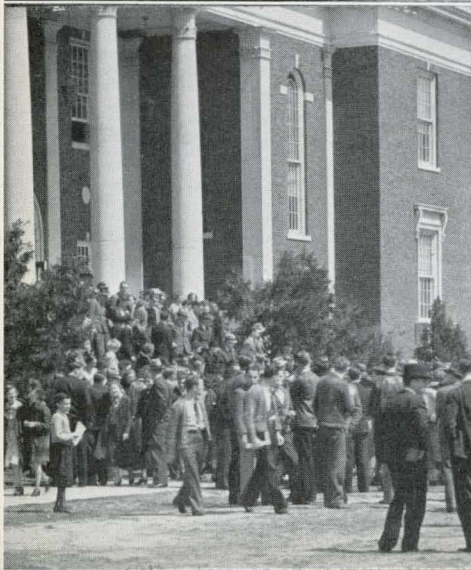
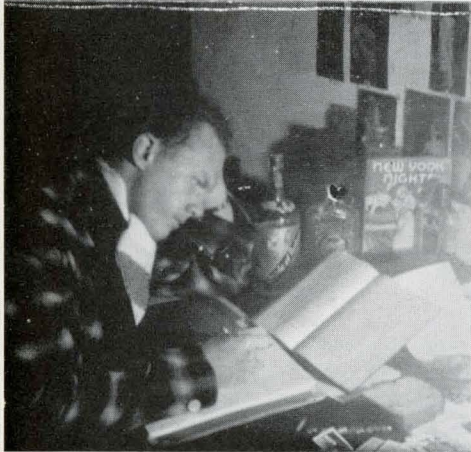
Sophomore Representatives: Bill McRaven and David Booker. A sophomore according to definition is a "wise fool," but these boys forgot their defined status and both got to work and fought for the student interests. They were integral factors in the coordination of the Executive Council.

Freshmen Representatives: Laone Young and Ray Rocher. "Beauty and the Beast." Two keen freshmen who have fit right in the groove and represented their class well. Congratulations, freshmen.



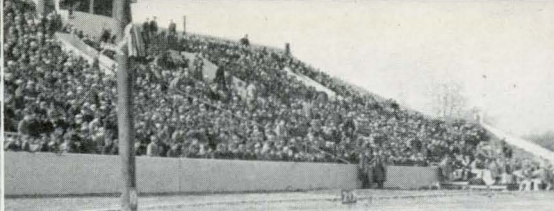
MEMBERS EXECUTIVE COUNCIL

Student government became a feature of the extra-curricular program at Murray State College in September, 1936. It was called the Student Organization. The first executive officers of the association, those now serving, are Cecil Gentry, senior, president; Miss Sue Gunter, senior, vice-president; Miss Dutch Tanner, junior, secretary; and Howard Slayden, senior, treasurer. At the close of the Spring semester new officers will be elected. Members of the executive committee are: Sam Neely and Floyd McClure, seniors; Frank Jones and James Allison, juniors; David Booker and Bill McCraven, sophomores; and Miss Laone Young and Raymond Rocher, freshmen. The Student Organization, result of a desire on the part of the students for a representative form of government, came into being during the latter part of the Spring semester of 1936. The idea was popular when it was first mentioned in a pep meeting by Russell McCracken, one of its active supporters who later became its first chairman, serving temporarily though not officially. . . . After ratification of the constitution by the students, the Organization was immediately successful. Much of the credit may be attributed to the members of the constitutional committee whose zealous and courageous efforts energized the student body into the spirit of a great cause—that of self government. . . . Members of that committee, elected by the students, were Russell McCracken, chairman, Christine Brown, Margaret Trevathan, Frank Trilling, Joe Horrell, Sam Neely, Cecil Gentry, James Allison, and Frank Jones. Gentry later became the first officially elected president of the students. . . . Because the Student Organization is democratic in principle, loyal in motivation, and dependable in execution, the Shield lauds the splendid ideal that gave it growth.



The

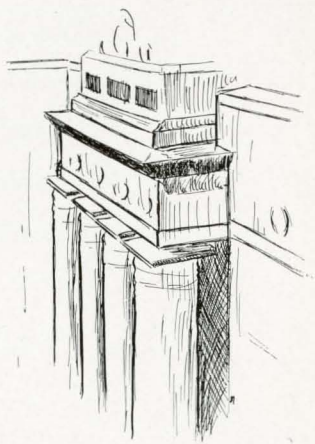
Sunset at Murray—Three on a sled
—Kitchen crew at ease—Now now
papa Doyle—Ride Mister?—Hi! gals
—Tolson and his squaws—Suite 303
in person—Careful Offerman—And
to think; he's studying—Daddy Hol-
land and the crew—Prof's at rest—
Sorry men, no mail—Yea!—High
School Day.



CAMPUS IN PICTURES

Boy's! Doesn't that concrete hurt your feet?—Must be gonna be a fight or sump'n; lookit all the peop'e—Yeah Joe that's what comes from using it too much, now it's in a sling—Be careful! No telling what that darn things liable to do.—Bet you he misses

—Battsie what in the world are you doin? No wonder they look tired holding up those pipes—Capt. Phil shows his injured extremity to Prof. Yancey. Whatcha doin Seay? Can't tell whether your coming or going.





The TRASH

BEING AN ACCOUNT

Let it first be said that this portion of the Shield bears no resemblance to the title "Trash-pot"; in fact, we do not even have a kettle, nor are all contents "trash."

We hope our Editor-in-Chief, Bob Blaeser, gets through with his examinations in time to "check" these results of many painful efforts. . . . We need Ed Freeman this minute to type a letter. . . . The only position Neely failed to get while in college was one on the Shield staff. . . . No one can be so dapper as Bill Carrier (the name's Cahwiah!) . . . nor can anyone talk as loud as Bob

Miller. . . . We'll wager that Joe Herndon can play football a little better than he can use a typewriter. . . . What would Murray College do without a Kellow?

Someone said Hamby was still shooting pictures for the Shield.

Facts: There are approximately 6,000 letters yet to be written. . . . Ann Herron gets the hand for the best "Reading" of the year. . . . Question: In what way is Cecil Gentry comparable to the Empire State Building? . . . "Isn't this fun!"

Probably the most repeated expression on the campus is this: "I don't know, but I think I know." . . . The tune that Offerman plays much better is "Hot Lips." . . . In case you didn't know, Harry Basan is

P O T . . .

OF CAMPUS FOOLERIES

now a senior. . . . We wonder if Howard Slayden has found out his sociology lesson yet.

No one has that "Senatorial" look as Professor Ashcraft—nor that "stay-away-from-me attitude" as has Albert Seay.

Infamous Sayings: L. J. Hortin—"That's all true, but what does it prove?" . . . Ann Graham—"Oh, it's a Bulova!" . . . F. D. Mellen—"Be sure you hand me all announcements." . . . Bibbo Williams—"Isn't that cute!" . . . Minnie Lee Ligon—"This is just a suggestion, but it'll work."

One of Murray's greatest basketball players, Lulu Graham, looks just like Kellow (one-half a mile away). . . . Can anyone say, "I didn't get the question, Dr. Poret,"

like Estelle Hayes? . . . Oh, yeah! . . . Is Allan Farris still working in the library? . . . And where is Minnie Lee Ligon now? . . . Does. . . .

How is it that just a little Pat makes Ed Freeman so cheerful! . . . Someone said Litchfield needed a barometer. . . . "They" said 19 college professors were found in the Hut at a single sitting. . . All those in favor of the ROTC please stand.

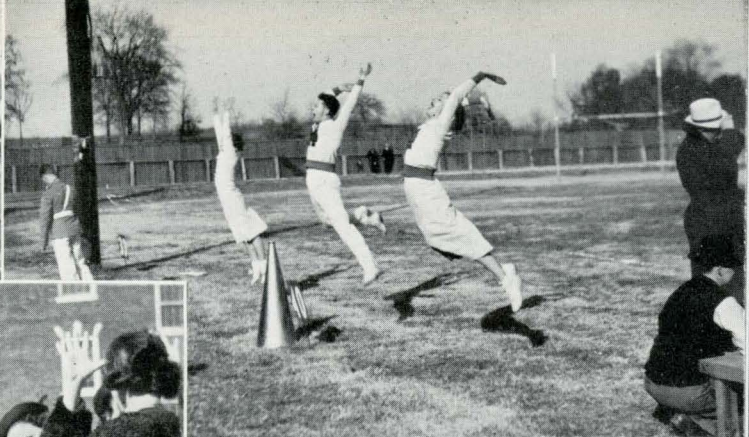
How many students have mistaken Professor Yancey for a medical doctor? . . . How refreshing it is to hear Sue Gunter say "Hello, there!"—and Martha Fox's "When are you coming back?"

Does Patty Lee still have a "Bud" in college? . . . "Cornwallis" will room out in town (we hope) during his next four years in college. . . . Lucille Pollard (they say) likes sports. . . . Go tell Casey Organ to "sit this dance out." . . . How many times has Dalton Woodall "washed away his Monday morning blues"? The pot's full—on with the brewing!



The

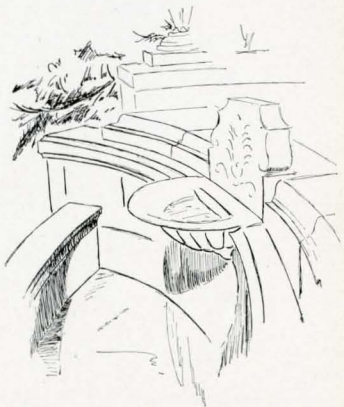
Public hangin — Some Parade — You again, Glenn? — Buildin sump'n? — Why professor—Aint it cold?—Sleepy boys? — Our dumb major — Football training—Walking's good for you— Another petition?—Where to Prof's? —Lookin for sump'n?



CAMPUS IN PICTURES

*Little man you've had a busy day—
Lets go gang givem; or pardon me—
Some crowd huh? Bet it's Western
—Looks like you'll have to have an-
other pair, naughty, naughty, musn't
do that, I'm surprised. Welcome Red*

*Boyd; whatta man!—Professor Mc-
Clure will now take charge of the
class—Man Mountain Land holds that
line or shou'd we say holds up that
line?—The future chorus girls (they
hope).*





THE 1937 SHIELD

Here are the mugs who slaved over your book. A hard-working crew who have put your book together and are ready to take your congratulations or your—.

They found that putting out an Annual wasn't any fun, but when the going was hard about two in the morning, then the Staff really shone. The training received was worth the effort put out and now that it's all over we certainly are glad that we could have had a part in its publication.

Imagine Pete taking that certain snap; Henderson interrupting to tell about that certain play; trying to arrange the Staff picture so Carroll could have his made. Good old Corrinne, first lady to the Organization Editor Chester Hayes. Meet Ed. Freeman, the faculty man, and Ann Heron holding him down between professors. Brother Woodall taking time out between broadcasts to jot a few notes for the sports pages. Joe and Minnie are still trying to figure out that certain line about that certain senior. Say, by the way, Joe and you, too, Minnie, the Annual is out. Harwood, quit playing that durn flute and come here. Yes, you must have heard him talking—no other than "Doc" Litchfield, with his weeping and wailing and gnashing of teeth, or is that Neely's line? "Dee" Cochran was the shining light, and Jim Ed was the local ad. man. "Winky" was the Junior Editor and was always going to have me fired. Sure glad he lived through it, at times it was doubtful. We found out that "Brother" Yancey was just one of the boys, but we thought so all along. That Hamby boy is out right now hiding from those who want their pictures taken. Jane, get those etchings in, please. Yes, I know you have a test in the morning. "Polly," help us with that snap page. Yes, Bill, but I think we could get more money if —— and so far into the night.

SHIELD STAFF

<i>Editor-in-Chief</i>	BOB BLAESER
<i>Business Manager</i>	BILL CARRIER
<i>Associate Editor</i>	L. C. LITCHFIELD
<i>Shield Eponsor</i>	A. F. YANCEY
<i>Art Editor</i>	JANE MELUGIN
<i>Senior Editor</i>	JOE HERNDON
<i>Sports Editor</i>	DALTON WOODALL
<i>Junior Editor</i>	WILLIAM HENRY NICHOLS
<i>Snapshot Editor</i>	PETE WRIGHT
<i>Music Editor</i>	HARWOOD TILTON
<i>Staff Photographer</i>	ORTON HAMBY
<i>Faculty Editor</i>	EDWARD FREEMAN
<i>Organization Editor</i>	CHESTER HAYES
<i>Assistant Business Manager</i>	DEE COCHRAN
<i>Advertising Assistant</i>	JIM ED DIUGUID
<i>Assistant Senior Editor</i>	MINNIE LEE LIGON
<i>Assistant Sports Editor</i>	JULIAN HENDERSON
<i>Assistant Sports Editor</i>	WILLARD CARROLL
<i>Assistant Faculty Editor</i>	ANN HERRON
<i>Assistant Organization Editor</i>	CORRINNE THURMAN
<i>Assistant Snapshot Editor</i>	LUCILLE POLLARD

•

BOB BLAESER
Editor-in-Chief

In guiding its production and supervising its layout, Bob Blaeser has worked unceasingly on the Shield. His spirit, even when the going was hardest—and those “goings” were numerous—acted as a light in steering the staff in its work. In producing a year-book no higher compliments can be paid than to say of its Editor, “He has done his job well.” This we say of Bob.



•

BILL CARRIER
BUSINESS MANAGER

Bill Carrier has been a hard worker, and a good business man. He applied himself to the job well. Worked unceasingly to finance the Shield. The Shield owes much to his ability and to his foresight. He never shirked his duty and bore his and sometimes other people's duty as well. His work has been deeply appreciated and he will be missed by all next year.





SAM BOYD NEELY

Editor College News

Sam Boyd Neely, editor-in-chief, a Hazel, Ky., product, was chosen editor in May, 1936, after he had commendably completed the required courses in Journalism. An industrious worker, a skillful journalist, and a popular campus figure, Neely has done much to make the College News continue to be the popular medium for campus expression.



EDWARD FREEMAN

Business Manager College News

Edward Freeman, business manager, has served in every capacity on the College News staff. In successive semesters, he was reporter, assistant editor, managing editor, publicity assistant, editor-in-chief, and business manager. Through constant industry and application of marvelous faculties, his contribution to the College News has been of inestimable benefit.

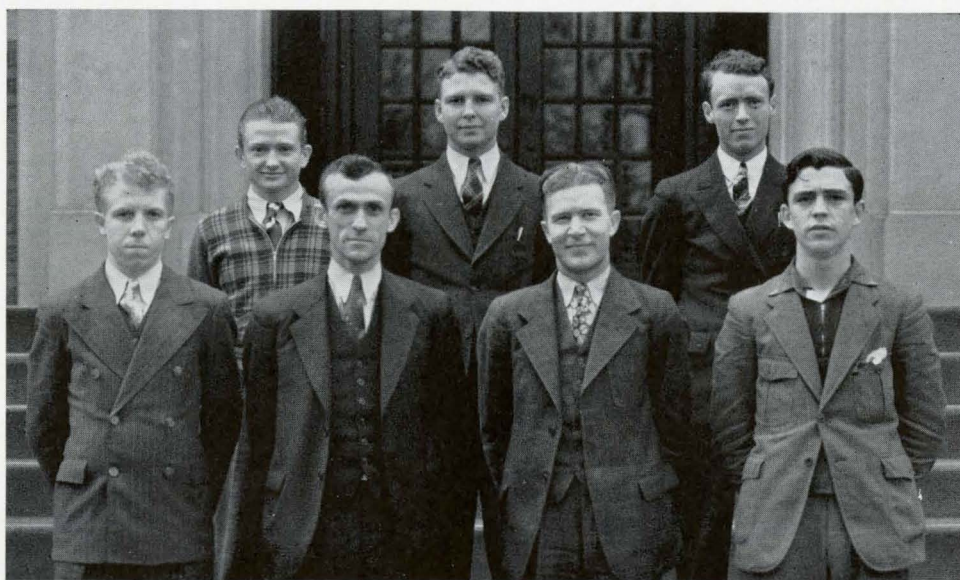
T H E C O L L E G E N E W S

The College News is the official newspaper of Murray State College. With a circulation of 4,000 copies per issue, it is published bi-monthly from September to August by the Department of Publicity and Journalism of the College. All subscriptions are handled through the business office of the college. A member of the Kentucky Intercollegiate Press Association and the First District Press Association of Kentucky, it was named the best college newspaper in Kentucky in 1933 and has never ranked lower than third in intercollegiate competition. . . . L. J. Hortin, Associated Press writer, is publications director, and Elizabeth Williams, Clinton, is managing editor. The editor is selected by a committee composed of the publications director, the incumbent editor, the head of the English Department, and the president of the Student Organization. The business manager is appointed through the business office of the college. . . . Full of the spirit of a young and growing institution, the College News is an invaluable asset to Murray State College, its students, and alumni.

NEWS STAFF

Editor-in-Chief SAM BOYD NEELY
Business Manager EDWARD FREEMAN
Managing Editor ELIZABETH WILLIAMS
Sports Editor EDD KELLOW
Associate Editor LEE WILLIAMS
Society Editor BERLENE BREWER
Columnists L. C. LITCHFIELD, MARGARET BINGHAM
Music Editor USHER ABELL
Assistant Sports Editors
. KENDRED WINSTON, BILL DENNING, JAMES OVERBY, BOB SMITH, GENE BLAND
News Editors BONNIE MIDDLETON, LOUIS RYAN, RALPH LOVE
Assistant Editors BETSY TREAS, MARY B. JONES
Assistant Managing Editors MARSHALL WYATT, MARGARET SMITH
Feature Writers CHARLES FARMER, LOUIS APPLIGATE
Assistant Business Manager C. W. BEALE
Editorial and Feature Writers OLIN COLEMAN, JONES DAVIE,
. DAN BANKS, MARGARET TREVATHAN, CLAUDE WILSON, RANDALL BURCHAM
Typists IRENE NICKELL, MRS. ANN LASSITER
General Reporting ELEMENTARY JOURNALISM CLASS
AP Correspondent, Publications Director L. J. HORTIN





THE VARSITY DEBATERS

Murray opened its current season in a debate with Oxford College, England, on December the eighth, in a non-decision debate. Cecil Gentry and L. C. Litchfield represented Murray. Gentry paired with one of the Englishmen on the affirmative while Litchfield paired with the other on the negative. The question: "Resolved, that utilities should be Government owned and operated."

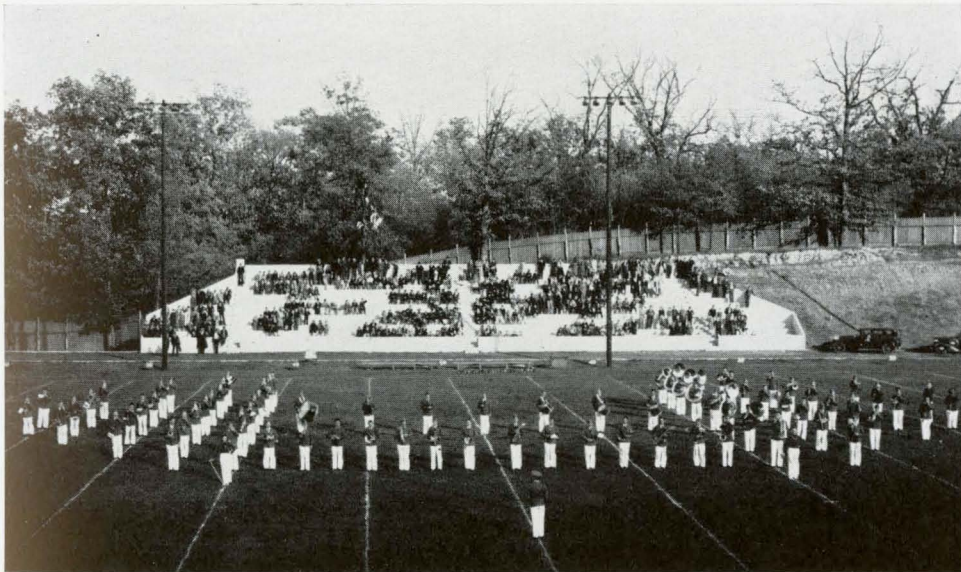
The other members of the squad are: Sam Boyd Neely, James Overby, Robert Miller, and Robert Myre. Neely was a member of the 1934-'35 team while Gentry debated in the 1933-'34 season.

Murray has scheduled Western, Texas Christian, and Michigan State on the Pi Kappa Delta question, "Resolved, that Congress should be empowered to fix minimum wages and maximum hours in industry." Neely and Litchfield have been selected to debate Western on the affirmative side of this question, while Overby and Gentry will debate them with Murray on the negative.

Murray also plans to enter some major tournaments such as the Mid-South Debating Tournament and the South Atlantic Debating Tournament.

THE BAND

We, the staff, wish to pay tribute to an organization which we feel is an intrinsic asset to any college and campus life—the college band. A game is not won always by brute force and strategic plays. Oft-times the spirit is the victor. . . . Inspiration by music is not uncommon here at Murray. At every game or event Director William Fox is on hand with his "best band in the S. I. A. A." to play the stirring victory songs of Murray State. Eighty-five pieces strong, product of a music department unsurpassed by that of any other teachers college in America, the Murray band is representative of the excellent and exquisite work in cultural arts of which Murray College is master. Between halves of Thoroughbred games, the band marching down the field lends zeal to the cheering stands and color to an evening that is replete with thrills. How glorious the spectacle of Murray's victory march! . . . How complete the thrill, the pounding blood, the eagerness and the glow, the wild exultant championing of a cause! Back of every worthy college movement, Murray's music department and the college band has zealously worked in co-operation with principles in that movement. . . . Symphonies under the stars, the sky, and songs in the flowers, brilliant pictorials of sunny slopes and amber waterfalls—depths of sorrow and heavenly bliss—flashing arms and sweet lips and Love, Love, Love . . . sweet moments torn from tulip-prisoned time . . . all those lie restless in music's repertoire of dreams . . . all these are ours through the college band. . . . To it and its sponsor goes our gratitude!



The School

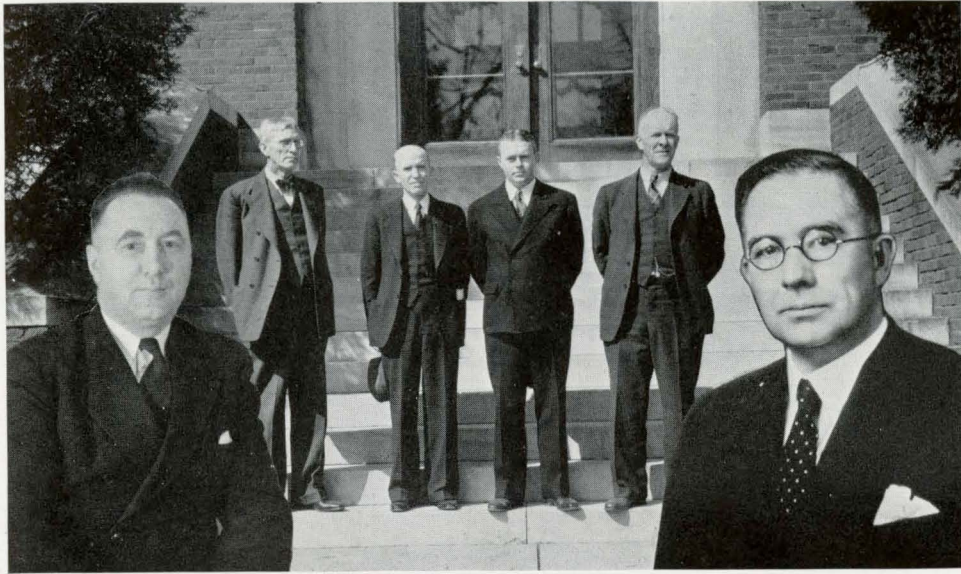


Embryonic in Age, but already Rich in Tradition . . . A future bright with anticipated service to Youth . . .



LIBRARY . . . CENTER OF CULTURAL LIFE





BOARD OF REGENTS

HARRY PETERS, *Chairman* *State Superintendent Public Instruction*
FRANKFORT

DR. C. E. CRUME *Dentist*
CLINTON, KENTUCKY

JOE ROGERS *Druggist*
BARLOW

CHARLES FUGERSON *Lawyer and Judge*
SMITHLAND

T. O. TURNER *State Senator*
MURRAY

DR. JAMES H. RICHMOND *President Murray State College*



DR. RICHMOND

Murray goes forward under the able leadership of President James H. Richmond. A man dear to the hearts of all of us because he is one of us. Firm but with a kindly heart, far-seeing and governing his policies accordingly, one who faces responsibility with a firm conviction, and is considerate of the interests of others. A man who sees his duty and works always toward the goal.

That he is also highly regarded in governmental circles is also highly gratifying to us. During the worst period of disaster that Murray has ever faced he showed his true mettle. The selection of Doctor Richmond as official spokesman to deliver before the Senate the closing arguments for the Fletcher-Harrison education bill further testifies to his National prominence.

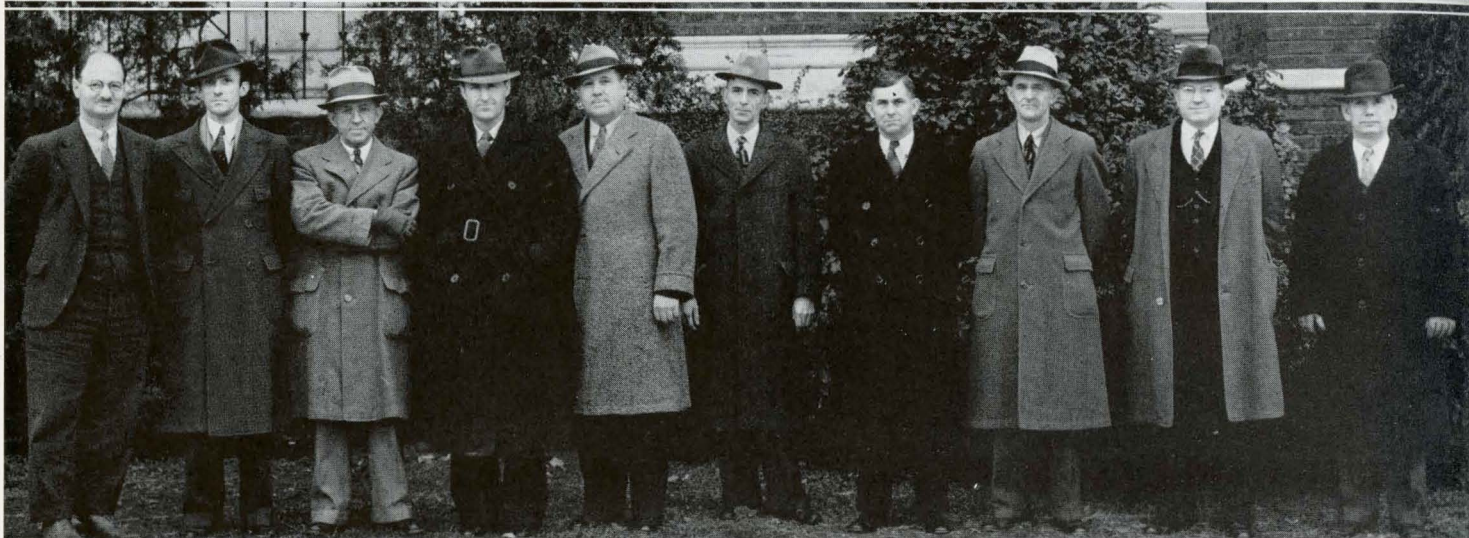
Murray moves on. . . .



DR. CARR

First mate to Dr. Richmond is Dr. Carr. He was twice president and twice dean of Murray State. A man who through firm educational convictions has stuck with Murray and has been one of the foremost factors in the far-reaching advance of Murray State. Truly an educator of the highest rank. A firm believer in the worthiness of achievement, insistent in his demands for the maintenance of a high standard of scholarship, a believer also in the individual.

The grand old man of Murray has raised the school, through his work and inspiration, and lives in the hearts of all of us. We the students assure him that we are back of him one hundred per cent and that his strivings will not be in vain.



UPPER PICTURE:

PROF. FRANKLIN P. INGLIS, instructor in Instrumental Music, Appreciation, etc. . . . Miss DAISY HINKLE, New addition. Music critic teacher at Training School. . . . LESLIE R. PUTMAN, Voice Instructor, leader of Choirs. . . . Miss MARY COLEMAN, Instructor in French, leader of Clubs. . . . PROF. PRICE DOYLE, head of Music Department, leader of Orchestra. . . . DR. ELIZA SPANN, instructor in Nature Study and Biology. . . . PROF. A. F. YANCEY, Physics instructor, sponsor of Shield. . . . MCGAVERN again. He crops up like his music, Everywhere. . . . PROF. PAUL JOHNSON, filling in for his father in Chemistry. . . . PROF. WILLIAM FOX, Violin instructor. Director of College Band. . . . DR. GEORGE C. PORET, Education instructor. Pleasing personality.

BOTTOM ROW:

DR. A. M. WOLFSON is head of the Department of Biology. . . . PROF. L. J. HORTON, College Publications Director and Journalism head, is also secretary of Murray Chamber of Commerce. . . . DR. G. T. HICKS leads the Education Department. . . . COACH ROY STEWART is head Football Coach and head of Physical Education Department. . . . PROF. G. C. ASHCRAFT may be found teaching in the Social Science Department. . . . PROF. F. D. MELLEN, English and Speech Instructor. Chairman of Chapel Committee. . . . PROFESSOR COMPTON, Commerce Instructor. . . . PROF. W. M. CAUDILL, Geography Instructor. Regional adviser for University of Chicago. . . . DR. CHARLES HIRE, head of Physics Department. Committee member.

. . . M E M B E R S O F



TOP ROW:

DR. HERBERT DRENNON heads the English Department. . . . COACH OTIS EDMONDS Deans at the men's dorm, coaches, and teaches Hygiene. . . . DR. CARMAN has the Euclidian knach expression. He is head of Math. . . . PROF. JONAH GIBSON is Chief Librarian of Murray's 70,000 volumes. . . . PROF. WALTER BLACKBURN knows Chemistry from H_2O to $C_2 H_5 OH$ PROF. C. S. LOWRY, Social Science head, plans doctor's work at Harvard this summer. . . . RUE L. BEAL came from Wingo to assist in the Social Science Department. . . . JOHN MILLER coaches the Frosh basketball and football teams, and teaches Hygiene.

BOTTOM ROW:

CLAIRE R. MCGAVERN, talented instructor of Piano at Murray State. . . . MISS CARRIE ALLISON, co-ed Physical Education and Hygiene instructor. . . . MISS MCDANIEL knows her rhythm and timing. She teaches typing in the Commerce Department. . . . MISS LINN delves into the abstract when she teaches Math in the springtime. . . . DR. FLOY ROBBINS capably fills her position as dean of the Geography Department. . . . MRS. CLEO GILLIS HESTER personally heads and directs the Registrar's Department. . . . MISS NELLIE MAE WYMAN teaches students Education and "Worthy Use of Leisure." . . . PROF. ELLISON L. BROWN as Librarian knows where every book in the Library ought to be. . . . MISS BEATRICE FRYE heads classically Murray's Foreign Language Department. . . . MISS LILLIAN HOLLOWELL is set on her Grammar and Children's Literature. She teaches English. . . . MISS ALICE KEYS, Administrative Secretary, capably filled the shoes of Dean during the leave of absence of Dean J. W. Carr.

T H E F A C U L T Y . . .



TOP ROW:

P. W. ORDWAY, Assistant Business Manager of College. . . . TENNIE BRECKENRIDGE, secretary to the President. . . . R. E. BROACH, Business Manager of the College, and a great power. . . . Miss WEAR, stenographic head and bookkeeper in the Business Office. . . . DR. HUGH HOUSTON, College Physician. . . . PROF. E. H. SMITH, head of the College Extension Department. . . . PROF. A. CARMAN, head of the Agriculture Department. . . . BETTY HAYS, secretary to the Registrar. . . . KAY RUDOLPH, secretary in Extension Office. . . . Miss ESTHER RHODES, secretary to the Registrar. . . . MRS. M. E. N. HALL, head of College Art Department. . . . PROF. W. J. CAPLINGER, superintendent of Murray City Schools, College Education instructor. . . . MRS. ROWLETT, College Instructor in Art.

BOTTOM ROW:

"DAD" HOLLAND, boss of the campus, works 'em rain or shine. . . . B. J. HOFFMAN is maintenance foreman and College Engineer. . . . MR. STRAITHER is the new College Carpenter. See the president's home. . . . MR. MORGAN looks after the auditorium and library buildings. . . . MR. GIBBS has charge of maintenance at the Training School.

FACULTY--ADMINISTRATION



Standing:

MR. CARMON GRAHAM	Principal
MRS. LILLIAN LOWRY	Third Grade
MISS ROBERTA WHITNAH	Science
MRS. N. M. ATKINS	Substitute Second Grade
MISS MARGARET CAMPBELL	Social Science
MISS EMMA J. HELM	Fifth Grade
MRS. DOROTHY ROWLETT	Art
MISS DAISY HINKLE	Public School Music
MR. CLIFTON THURMAN	Mathematics

Seated:

MISS MAURINE BROOKSHIRE	Secretary
MISS NADINE OVERALL	Languages
MISS CLARA RIMMER	English
MRS. RUE BEALE	Substitute Fifth Grade
MRS. MARY ED. MCCOY HALL	Public School Art
MISS BERTIE MANOR	First Grade
MISS MATTIE TROUSDALE	Fourth Grade

TRAINING SCHOOL . . .



TOP ROW:

P. W. ORDWAY, Assistant Business Manager of College. . . . TENNIE BRECKENRIDGE, secretary to the President. . . . R. E. BROACH, Business Manager of the College, and a great power. . . . MISS WEAR, stenographic head and bookkeeper in the Business Office. . . . DR. HUGH HOUSTON, College Physician. . . . PROF. E. H. SMITH, head of the College Extension Department. . . . PROF. A. CARMAN, head of the Agriculture Department. . . . BETTY HAYS, secretary to the Registrar. . . . KAY RUDOLPH, secretary in Extension Office. . . . MISS ESTHER RHODES, secretary to the Registrar. . . . MRS. M. E. N. HALL, head of College Art Department. . . . PROF. W. J. CAPLINGER, superintendent of Murray City Schools, College Education instructor. . . . MRS. ROWLETT, College Instructor in Art.

BOTTOM ROW:

"DAD" HOLLAND, boss of the campus, works 'em rain or shine. . . . B. J. HOFFMAN is maintenance foreman and College Engineer. . . . MR. STRAITHER is the new College Carpenter. See the president's home. . . . MR. MORGAN looks after the auditorium and library buildings. . . . MR. GIBBS has charge of maintenance at the Training School.

FACULTY--ADMINISTRATION

*The finished
product of the educational
mill. Thoroughbreds all.*



OFFICERS

PRESIDENT GUNTER HOLDS UP THE
AUDITORIUM WITH VICE-PRESIDENT
SUMNER, WHILE SECRETARY AND
TREASURER MURPHY HOLDS DOWN
THE STEPS.

THE SENIOR CLASS



NINETEEN THIRTY - SEVEN

Members

MARY FRANCES BARD

FULTON, KY

A.B. Degree, major in French; Les Savants, Les Camarades Francais; Classical, English; Secretary Les Comarades Francais '33.

FLOYD CLAUDE McCLURE

DECATUR, ILL.

Bachelor of Music Ed.; Vivace, Swing, Wilsonian; Vice President Vivace '35, '36; President '36, '37; Director Girls' Pep Squad '35; Director Freshman Band '36; Band '34, '35, '36, '37; Orchestra '34, '35, '36, '37.

WILMA ELLEN LEMONS

MURRAY, KY.

B.S. Degree. Member of following clubs at Southern Illinois State Teachers College, Carbondale, Ill., '33, '35; Socratic Literary Society; MacDowell A Cappella Choir; Y. W. C. A. at Murray, '35, '37; Sock and Buskin; English Club; Young Democrats; Baptist Students' Union, First Vice-President '37.

WILLIAM ALEXANDER HOPPE

WAUPUN, WIS.

B.Mus. Ed. Degree; Vivace, B. S. U.; College Band '35, '36, '37; Orchestra '35, '36, '37; String Quartet '36, '37; Chorus '35, '36.

HARWOOD WAYNE TILTON

COVINGTON, KY.

B.Mus. Ed. Degree; College Band '33 to '37; College Orchestra '33 to '37; A Cappella Choir '33 to '37; Woodwind Quintet '34, '36, '37; College Chorus '33 to '37; played in following dramatic productions: "The Rock," "A Kentucky Belle," and "Junior Minstrel," '36. Member of Vivace Music Club, Vice-President '36, '37; Portfolio Club; Christian Association, President '35; Wilsonian Society '33, '34.

MILDRED FAE SWANN

LYNGROVE, KY.

B.S. Degree, Major in Mathematics; Mathematics; International Relations; Young Democrats.

RALPH STONE PATTERSON

MURRAY, KY.

B.S. Degree, Major in Chemistry; Ag, Chemistry Clubs.

MARY COX

BENTON, KY.

B.S. Social Science.

BEULAH DANIEL WILKINS

MURRAY, KY.

A.B. Degree; Member of Les Savants, honorary French Club; Les Camarades Francaise; English Club; Classical Club; Made honor roll every semester but one.

JOHN O. BRASWELL

MURRAY, KY.

B.S. Math.; Math Club; "Pirates of Penzance" '33.

MINNIE LEE LIGON

PRINCETON, KY.

B.S. Degree; Health and Physical Education; Pep Club '34, '35, '36; President Student Council '35; Senior Representative Student Council '36; Co-Captain Gym. Club '34; Queen's Court '36; English Club '36.

JAMES SWANN

MURRAY, KY.

B. S. Degree; Intramurals; Winner of medal '34; Softball winner '35; Physical Education Tumbling Team '35; Member College News Staff '35; International Relations Club; Wilsonian Society '33; Chemistry Club.

CARY SUMNER

CLINTON, KY.

B.S. Biology; Pre-Med; Math.; Vice-President Senior Class '37; Intramural Sports.

FLORENCE JEWELL

WILLIFORD, ARK.

B.Mus. Ed.

DEE COCHRAN

MAYFIELD, KY.

B.S. Chemistry; Chemistry Club Vice-President; Pre-Med, Vice-President; Intramural Sports; Associate Business Manager SHIELD '37.

AGGIE LEE PASCHALL

B.S. Commerce; College News '36, '37.

THE SENIOR CLASSES

THE SENIOR CLASSES

Members

LUTHER T. GOHEEN

BIRMINGHAM, KY.

B.S. Social Science, Geography; President Allenian Society '33; College News '35; K. I. P. A. member; "Tilda Ann" '35; Co-director Junior Minstrel '36; International Relations; Henry Clay '33; President Marshall County '35; Vice-President Young Democrats '36; Vice-President Sock and Buskin '37; President International Relations Club '37; "Outward Bound."

ANITA HICKS HERNDON

BRUCETON, TENN.

A.B. English; Milligan College '34, '36; Secretary-Treasurer Pep Club '36, '37; English; Classical.

GASTON B. TAYLOR

ALAMO, TENN.

B.Mus. Ed., Piano, Band '35, '36, '37; Orchestra '35, '36, '37; A Cappella Choir; College Chorus; Vivace; Men's Glee Club.

DOROTHY DALE

MURRAY, KY.

Bachelor of Arts.

LUCILLE POLLARD

MURRAY, KY.

A.B. Health Ed.; College News '35, '36; Intramurals, Annual Staff, Assistant Snapshot Ed '36; English, Les Camarades Francais, Pep Club, Business Manager '35, '36; Co-ed Gym Club.

ROBERT STEVENSON

HENSHAW, KY.

B.S. Health Ed.; Intramurals.

GOLDA PAGE

PADUCAH, KY.

B.S. English; Chemistry; English; Girls' Glee Club; Quartet.

T. J. HARDIN, JR.

INEZ, KY.

B.S. Chemistry; Mathematics; Chemistry; Pre-Medical; Pikeville College; Eastern; Western.

JAMES JUDSON TOLSON

ENGLAND, ARK.

B.S. Phys. Ed.; Football '33, '34, '35, '36; "M" Club; Agriculture Club.

MATTIE D. PRESSON

CAMDEN, TENN.

B.S.; Les Camarades, Eng. Clubs; Wilsonian Society '33, '34.

REX LASHLEE

MURRAY, KY.

B.S.; International Relations; Chemistry Clubs.

ROWENA C. DAVIDSON

BOAZ, KY.

B.S.; Household Arts; Classical; International Relations; Allenian Society; B. S. U.

ANNA MILDRED LASSITER

MURRAY, KY.

B.S. English; English Club; Wilsonian '33, '34.

RALPH NIX ROGERS

MARTIN, TENN.

B.S.; Mathematics; Physics; Chemistry.

ANN HERRON

HAZEL, KY.

B.S. English; "Icehound"; "The Neighbors"; "Betty Behave"; "Her Incubator Husband"; "Macbeth"; Annual '36, '37; Secretary-Treasurer Sock and Buskin '36; President English '37; Secretary-Treasurer Young Democrats '36.

JAMES E. WILFORD

SEDALIA, KY.

B.S.; Frosh Football '30; President International Relations '32; President Christian Association '32; "Pirates of Penzance"; Secretary Allenian '32; Henry Clay.



NINETEEN THIRTY - SEVEN



NINETEEN THIRTY - SEVEN

Members

ROBERT LESLIE BLAESER

PADUCAH, KY.

B.S. Biology; Varsity Cheerleader '33, '34, '35, '36, '37, Captain '36, '37; President Sock and Buskin '35, '36; Secretary-Treasurer Junior Class '36; President McCracken Co. '34, '35; Vice-President Frosh. Class '33, '34; Co-Author and Director Junior Minstrel '36, '37; Band '33, '34, '35, '36, '37; Intramurals '33, '34, '35, '36, '37; Softball Champs. '36; Editor-in-Chief SHIELD '37; "Kentucky Belle," "Her Incubator Husband," "Three Cornered Moon," "Outward Bound," Junior Minstrel Int. '36, '37; "The Park Bench"; Chem.; Sock and Buskin; Pre-Med; McCracken Co.; Henry Clay; Vivace; Wilsonian Society.

BETH ELLIS

MILBURN, KY.

B.Mus. Ed.; Vivace; Band '35, '36, '37.

BARTON FISER

BENTON, KY.

B.S.; Intramurals; Mathematics; All-nian Society; Young Democrats.

CORINNE THURMAN

MURRAY, KY.

A.B.; President Les Camarades Francais '36; Secretary-Treasurer '35; Secretary-Treasurer English '35; Secretary-Treasurer Sock and Buskin '35; Pep Club.

HATTIE IRENE NICKELL

GRAND RIVERS, KY.

B.S.; President Christian Association '33; College News '35, '36, '37; Classical Rep. '36, '37; Pep Club; Classical; International Relations; Wilsonian; Christian Association.

HOWARD A. SLAYDEN

MAYFIELD, KY.

B.S.; International Relations; Young Democrats; Treasurer Student Organization; "Macbeth" '36.

DOROTHY ROWLAND

MURRAY, KY.

B.S. Degree with major in English; Member of English Club, Secretary '36; Pep Club, Vice-President '36, '37; Calloway County Club, Secretary '35; Wilsonian Society; Most Popular Girl '34; Maid-of-Honor at Junior-Senior Prom '35; Secretary of Junior Class '35.

KELLY P. SALMON

OWENSBORO, KY.

B.S.; Agriculture; Daviess County Club; International Relations; College News '36, '37.

JAMES ALTON THACKER

FULTON, KY.

B.S. Degree with Mathematics Major; Member of Sock and Buskin Dramatics Club, Vice-President '36, President '36-'37; Euclidian Math Club, Vice-President '36-'37; Fulton County Club, President '35; Chemistry; World's Affairs; Les Savants French Club; Chairman of Student Chapel Committee '36-'37. "Hearts Enduring," "Finger of God," "The Marchioness," "Three-Cornered Moon," and Macbeth."

MARIBEL HOLLAND

PADUCAH, KY.

A.B.; "Everyman" '34; Secretary English Club '34; Vice-President Pep Club '34; Les Camarades Francais.

WALTER LAURENCE WUSTER

BURNA, KY.

B.S.; Honor Roll '33, '34, '35, '36; Physics; Mathematics; Physics Club '36, President '36.

MILDRED FAE SWANN

MURRAY, KY.

A.B.; English Club.

GRACIE NELLE JONES

MURRAY, KY.

B.S. Elem. Ed.

CHESTER B. HAYES

REELFOOT LAKE, TENN.

B.S. Mathematics; Freshman Football '30; Basketball '30; Baseball '31; Varsity Football '31; Basketball '31; Organization Editor SHIELD '37; President Math. Club '36; "M" Club; Mathematics; Allenian Society '30, '31, '32.

MARY VIRGINIA WREN

KEVIL, KY.

A.B.; English Club.

HOMER "PETE" WRIGHT

UNION CITY, TENN.

B.S. Health Ed.; President "M" Club '36, '37; Varsity Football '34, '35, '36; SHIELD '37; Wilsonian '34, '35.

THE SENIOR CLASSES

THE SENIOR CLASSES

Members

ROSEMARY MILLER

KEVIL, KY.

Smith-Hughes Home Ec. President Household Arts, '37; Secretary B. S. U., '34; Council Member B. S. U., '37; College Y. W. A., '36, '37; Household Arts, '33, '34, '36, '37; Classical, '33; Pep Club, '36, '37; Chemistry, '37.

JOSEPH M. ENGLISH

MAYFIELD, KY.

B. M. Ed.; Vivace; Wilsonian; Band, '31, '32, '33, '34, '35, '36, '37; Orchestra, '31, '32, '33, '34, '35, '36, '37; Chorus, '31, '33, '36, '37; Director Wilsonian Society Orchestra '31; President Wilsonian '32; "The Creation."

SUE GUNTER

FULTON, KY.

Smith-Hughes Home Ec.; Milligan College '33, '34, '35; Student Council Wells Hall '35; Secretary Household Arts '35; President Girls Organization '36, '37; Mountain Laurel Rep. '37; Chemistry '36, '37; Les Camarades '35; Pep '35, '36; Household Arts '35, '36.

WILLIAM WALTON CARRIER, JR.

LOUISVILLE, KY.

B. S. Arts and Music; Vivace; Portfolio, Secretary '34, Treasurer '35, Vice-President '36, '37; Sock and Buskin, Vice-President '35, President '37; Christian Association; Wilsonian Society; Vice-President Junior Class '36; Amateur Contest Award '35; Vice-President Henderson County Club '34; Director and Co-Author Junior Minstrel '35, '36; Director of Music Club Revue "Rhythm Talks" '37; Band '34, '37; Orchestra '34, '37; Chorus '35 "Tilda Ann," "Kentucky Belle," "Three Cornered Moon"; Junior Minstrel '37, "Outward Bound"; Chairman Social Committee; Business Manager SHIELD '37; Dance Bands "Lee Cannon"; LeRoy Offerman" and Director of "Bill Carrier's Band."

FLAVIUS WYMAN

LOWES, KY.

B.S. Chemistry, Mathematics; President Mathematics '35; Vice-President Chemistry '36; President Chemistry '37.

LILLIE REID DAVIS

ARLINGTON, KY.

B.S. Physical Education, English; Basketball '32, '33; Sock and Buskin; College News '34, '35.

WILLIAM CRITCHLOW

MATTHEWS, MO.

B.S. Biology; Orchestra; "Pirates of Penzance"; Pre-Med.

KATHLEEN ROBERTSON

MURRAY, KY.

A.B. English; Pep Club; English; Glee Club '32, '33.

MARY JANE NANCE

KEVIL, KY.

B.M. Ed.; Vivace '36, '37; English '36, '37; Chorus '35, '36, '37; Band '35.

WOODROW WILSON DILL

MURRAY, KY.

B.S., Commerce and Social Science; International Relations; Young Democrats.

DAYTHA DAWN DALE

MURRAY, KY.

Bachelor of Music Education Degree. College Band '33, '34, '35, '36, '37; College Orchestra '33, '34, '35, '36, '37; Girls' Glee Club; String Quartet; Winner of Girls' Tennis Tournament '36; Freshman Quartet; Freshman Play; Vivace Club; Pep Club; English Club; Portfolio Club, associate member; and Christian Association.

H. L. HUGHES

MURRAY, KY.

B.S. Chemistry, Mathematics; Vice-President Mathematics '36; President Mathematics '36; International Relations.

HARDING C. WILLIAMS

MURRAY, KY.

B.S. Degree; Frosh Baseball '31; Wilsonian Society, Vice-President '32; One-Act Play '31; Physics Club; English Club; International Relations Club.

ROBBIE LEE JONES

LYNN GROVE, KY.

B.S.; English; World Affairs.

JIM EDD DIUGUID

MURRAY, KY.

B.S. Health Ed.; Football '35, '36; Assistant Advertising Manager SHIELD.

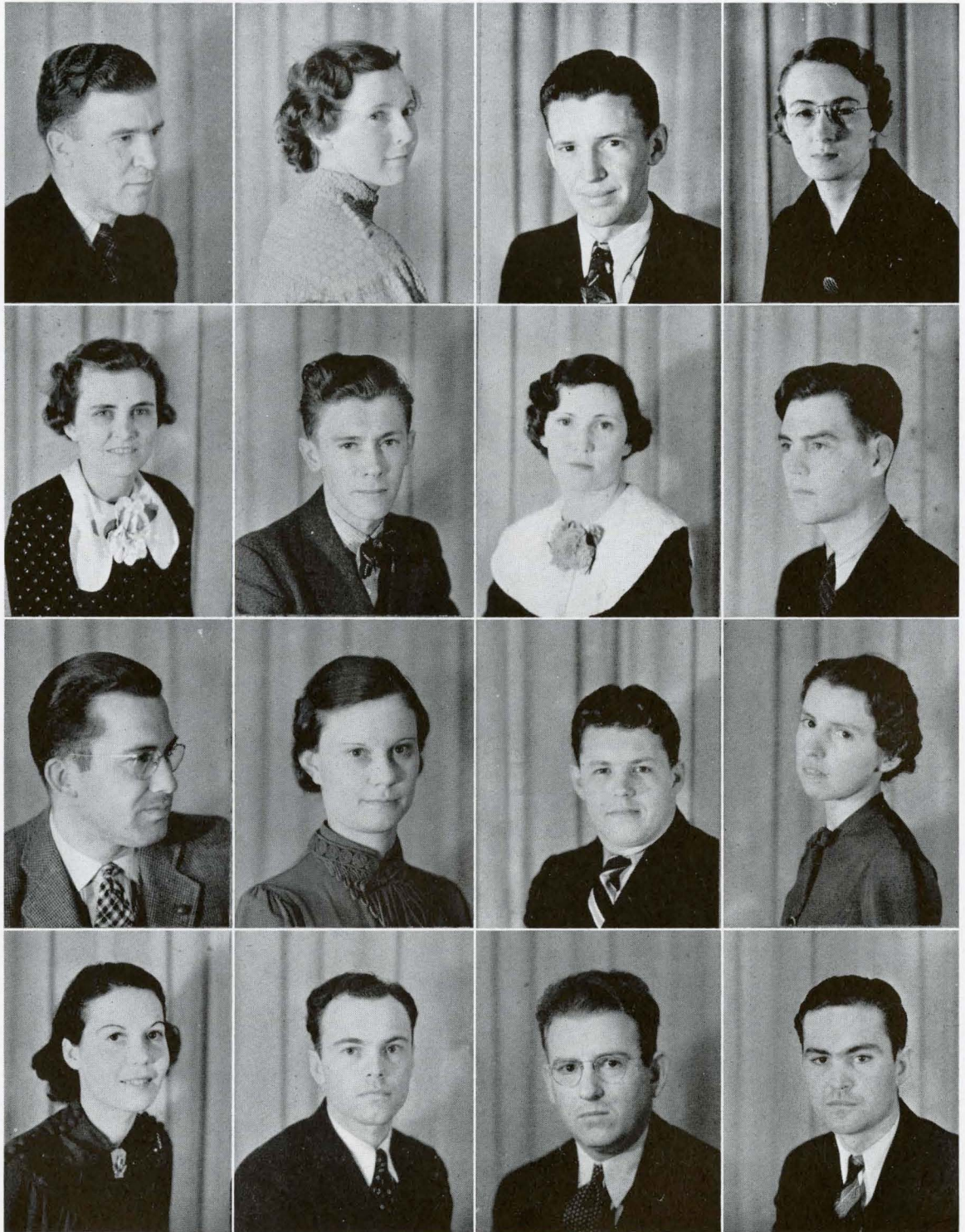
NELLE MAE JONES

MAYFIELD, KY.

B.S. Primary Ed.; Freshman Representative Student Council '33, '34; B. S. U. Council; English; Pep; International Relations.



NINETEEN THIRTY - SEVEN



NINETEEN THIRTY - SEVEN

Members

L. C. LITCHFIELD

FREDONIA, KY.

B.S.; Managing Editor SHIELD '37; President English '37; Vice-President Wilsonian '34; President Henry Clay '34; Varsity Debate '37; Vice-President Christian Association '32; Assistant Business Manager College News '36, '37.

CONNIE MAE MILLER

CALLOWAY COUNTY, KY.

A.B.

BOYD NALL OWEN

GILBERTSVILLE, KY.

A.B.; Intramurals '36, '37; International Relations '35, '36, '37.

CORDELIA CATHERINE BEARD

REPTON, KY.

B.S. English; Assistant Editor College News '34, '36; Secretary County Clubs '34; President Crittenden County '34; English.

ELTIS FRANKLIN

BENTON, KY.

B.S. Mathematics; Honor Roll; Secretary-Treasurer Mathematics '36.

CHARLES FARMER

MURRAY, KY.

B.Mus. Ed.; Vivace; "Outward Bound," "Violin Maker of Cremona"; Intramurals; Band '34, '36, '37; Orchestra '34-'37; Sock and Buskin; Vivace.

BONNIE LEE TANT

MISSOURI

A.B. Elementary Training.

GEORGE ERRET GARDNER

MURRAY, KY.

B.S. Degree; Freshman Football '30; Varsity Football, Manager '36; Varsity Basketball, Manager '37; Men's Chorus '30; Glee Club '30; Member Sock and Buskin Club; "Her Friend, the King" '30.

JOSEPH HOWARD COULTER

MAYFIELD, KY.

Pre-Med. B.S. Degree with certification, major in Biology and Chemistry. College Band '33, '34, '35, '36, '37; Vivace Club; Physics Club '34, '35; Dance Orchestra '35, '36; Graves County Club, Vice-President '35; Assistant Business Manager SHIELD '35; Chemistry, President '36.

JUANITA HESTER

YUMA, TENN.

B.S. Home Ec.; West Tennessee State Teachers College; Household Arts.

EDWIN QUINTON GUNTER

PADUCAH, KY.

B.S. Health Ed.; Freshman Football '34, '35, '36; President "M" Club '35; President Senior Class '37; Chemistry; Gym.

BEATRICE IVEY

BENTON, KY.

B.S. Education; Pep Club; English Club.

NANCY WILLIAMS

PADUCAH, KY.

A.B. Degree; Member of Student Council '35, '36, '37; Vice-President '36; Classical Club '35, '36, '37; Vice-President '36; Pep Club '34, '35, '36, '37; English Club '35, '36, '37.

EDWARD MILTON FREEMAN

CALVERT CITY, KY.

A.B., President Marshall County Club '34; Managing Editor College News '34; Publicity Assistant '35; Editor-in-Chief '36; Business Manager '36; President Junior Class '35, '36; Treasurer Kentucky I. P. A.; Delegate K. I. P. A.; A. C. P. Delegate '36; Intramurals '34, '35, '36; Best News Story in Kentucky '36; "The Valiant"; "Ile"; "Macbeth"; Faculty Editor SHIELD '36, '37; English; Les Camarades; Sock and Buskin; International Relations; Les Savants.

FRANKLIN MAY

HAMPTON, KY.

B.S. Agriculture; Intramurals '33; Agriculture Club; International Relations; Young Democrats.

EDMUND CLARK

WINGO, KY.

B.S. Social Science; International Relations.

THE SENIOR CLASSES

THE SENIOR CLASSES

Members

JULIAN C. HENDERSON
FULTON, KY.

B.S. Mathematics, Phys. Ed.; Freshman Football '32; Basketball '32; Varsity Football '34, '35, '36; Captain '36; "M" Club.

GARLAND A. MURPHY
MURRAY, KY.

B.S.; Secretary Senior Class '37.

JOE TED HERNDON
BRUCETON, TENN.

B.S. Health Ed.; Football '33, '34, '35, '36; Basketball '33, '34, '37; Intramurals; Only Freshman to earn numerals in all sports; Senior Editor of SHIELD '36, '37; Vice-President Sophomore Class '35; "M" Club; Tennessee Club; Wilsonian.

JANE MELUGIN
MURRAY, KY.

B.S. Biology; Chemistry Club; Outstanding in Art and Science; Portfolio; Art Editor SHIELD; President '37; Portfolio Club.

GEORGE H. HURLEY
MURRAY, KY.

B.S.; Band '34, '35, '36, '37; Chemistry; Agriculture; Wilsonian.

CLEVELAND HOLLADAY
FULTON, KY.

B.S. Chemistry; President Les Camarades Francais '34, '35; Chemistry Club.

KEITH BRYANT
BARLOW, KY.

B.S. Phys. Ed.; Intramurals '33, '34, '35, '36, '37; Varsity Basketball '36, '37; Freshman Basketball '33; Gym Club; Band '33, '34; "M" Club.

CARMON M. PARKS
MURRAY, KENTUCKY

B.S.; Vice-President Agriculture; Chemistry; Wilsonian.

KENDRED MASON WINSTON
DUKEDOM, TENNESSEE

B.S. Mathematics; Freed-Hardman College; Chemistry, Pre-Med.; Portfolio; Mathematics.

HAFFORD CLARK PASCHALL, JR.
MURRAY, KENTUCKY

A.B.; Secretary-Treasurer Physics Club; Vice-President English; Les Savants.

MARTIN LEE WILLIAMS
KENTUCKY

B.S.; President Ag. Club, '36-'37; President Math Club, '36; Porfolio Club; English; Int. Nat. Rel., Classical Club.

VERNON GRESHAM
MURRAY, KENTUCKY

B.S. degree with secondary training; Member of Physics Club, President, '36-'37; International Relations Club; Young Democrats Club, Treasurer, '36.

ROBERT CECIL GENTRY
PADUCAH, KENTUCKY

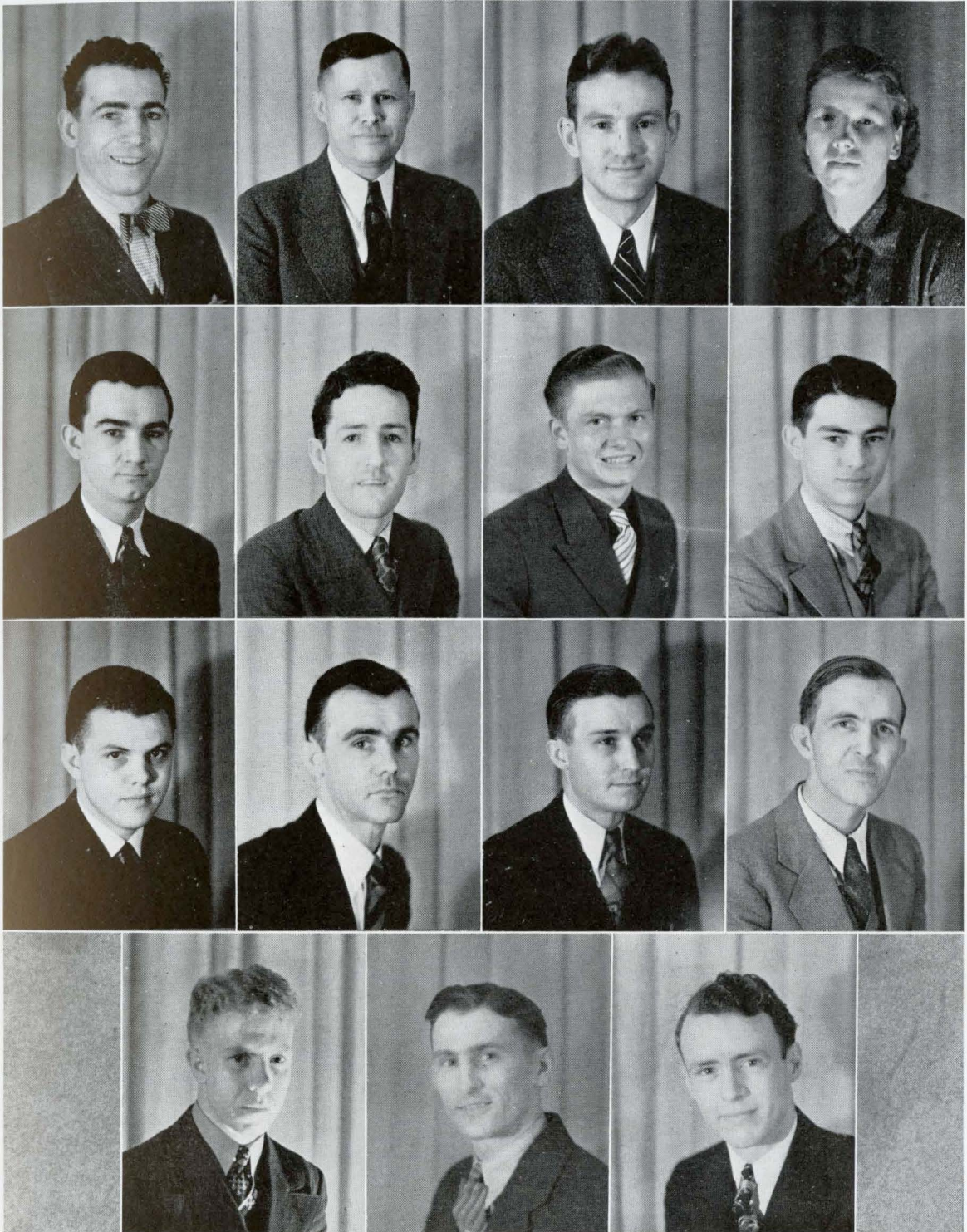
Bachelor of Science Degree; Student Organization, President, '36-'37; Constitutional Committee Member, '36; Christian Association, President, '36, Vice-President, '35; Henry Clay Debating Club, President, '35, Vice-President and Secretary in '36; Colleg. Band, '34, '35, '36, '37; Varsity Debater, '33, '34, '36, '37, Debated Oxford, England, '37; Sock and Buskin Club, and English Club.

HOYT R. JONES
FARMINGTON, KENTUCKY

B.S. Mathematics, Social Science; Debate, '36, '37; International Relations; Mathematics; Young Democrats; Chemistry; Henry Clay.

SAM BOYD NEELY
HAZEL, KENTUCKY

B.S.; Sock and Buskin; English; President Henry Clay, '34, '35, '36, Vice-President, '35, Secretary, '34; Varsity Debate, '34, '35, '36; Student Constitutional Committee, '35; Student Government Committee, '35, '36; Honor Roll; Editor-in-Chief College News, '35, '36, Managing Editor Summer, '35, Associate Editor Spring, '35; SHIELD, '34, '35.



NINETEEN THIRTY - SEVEN

*The backbone of
the college, workers all, next
year's Thoroughbreds. . .*



OFFICERS

President Noel illustrates "Esquire."
Vice-President Bushart looks the camera
in the eye and Secretary Thompson grins
at the birdie.

THE JUNIOR CLASS



Left to right

WILLIAM HENRY NICHOLS
ADDIE GRAHAM
ANNA LEE TERRY
CHARLES BAUGH

MARGARET WEBER TREVATHAN
CHRISTINE CALHOUN
FEDERICO AMIDOR
VIRGINIA McDONALD

BETSY GREER
DOROTHY HAMILTON
VIRGINIA ODLE
MARY RUTH CRICE

GEORGE GATLIN
MARY CHARLES FARRIS
THEDA WILKINS
WILLIMENA SHAW

JANE FARR
C. C. PARKS
AMBER HINTON
KATY BELLE SHAW

LEWIS EVANS
FRANCES POYNER
LA NELLE SIRESS
USHER ABELL

JUNIOR CLASS

JUNIOR CLASS

FLORA NELLIE ALLCOCK
 PHIL HOWARD
 EUGENIA MACKEY
 JOSIAH DARNALL

HAWTHORNE WALLIS
 ELOISE PORTER
 HOROLYNE HUBBARD
 LOUISE HIGHT

HILDA JACKSON
 CURTIS VAUGHN
 DORIS BUSHART
 BUSTER NEECE

HAROLD EDWARDS
 DUTCH TANNER
 CHARLES T. YARBROUGH
 LOUISE HIGHT

ROVINE PARKS
 YANCEY BENNETT
 BERLENE BREWER
 LAVERNE CALL



*Starting to get
some of the "new" removed,
beginning to show their
true worth. . . .*



OFFICERS

President Finley rests, Vice-President Applegate lends physical and humorous support to that joke of Secretary and Treasurer Williams.

THE SOPHOMORE CLASS

EDWINA HINTON
TOM ATWELL
ELIZABETH FOSTER
DORSE ODELL
EVELYN GINGLES

ED. GROSS
MARY B. JONES
HOWARD PASCHALL
CHARLOTTE JORDAN
WAYNE WYATT

FRANCES WAKE
EUGENE BEARD
EDWINA SIZEMORE
LUTHER DRAFFEN
MABEL FUTRELL

JAMES LOWRY
HARRIET FARMER
GROVER DAVIS
IRENE PAUL
DAVID BOOKER

CHARLOTTE ADAMS
LESLIE B. LEWIS
MARY ELLEN BROWN
MARY MCATEE
C. C. HUGHES

BOBBYE WEBB
EDWARD WEST
JANICE PUCKETT
BUD RUHL
IDELLE BATTS

GEORGE P. THOMAS
CASSIE GREGORY
ED. THURMOND
ROBBIE MAE CLARK
HOWARD CAMPBELL

KENNETH HARDIN
GERALDINE MILSTEAD
BILL ORR
RUTH HANCOCK
EDD KELLOW



S O P H O M O R E S

S O P H O M O R E S



BOB MYRE
 IDA MAE CURRY
 JO ROBERTSON
 ELLA MAE NEWTON
 JOHN QUATERMOUS

MATTIE JO HILL
 MARY RENO
 THELMA BRYANT
 MARY C. MITCHELL
 MORRIS CARTER

HUGH FINLEY
 MARY RUTH CAGLE
 MARGARET OVERBY
 MAURICE BRAUSA
 VIRGINIA GRANT

DONETTE DAVIDSON
 FRANCES UNDERWOOD
 ELIZABETH WILLIAMS
 ADA ALLEN ASHBROOK
 JONES DAVIE

THOMAS STOKES
 ANN GREGORY
 PAULINE RAYMOND
 JAMES HUNT
 MARGARET BOSTICK

LAURINE CURD
 HETTIE WILKINS
 JESSE FRANCES WILLIAMS
 ALICE NUNN
 JAMES HOSICK

FRED McDERMETT
 JULIA BELL
 NORMA WAGGONER
 RANDALL P. BURCHAM
 DELLA FRANCES BELL

LOUISE GRIFFIN
 RUTH HANCOCK
 IZABELLE WALDROP
 REBECCA MADDOX
 WELDON RAMAGE

Raw material
for the mill, untried, new,—
the Murray Colts. . .



OFFICERS

Freshman President Stevenson and Vice-President Saunders, as usual under the sway of a woman who in this case happens to be Secretary and Treasurer Hammock.

THE FRESHMAN CLASS

FRESHMEN

Left to right

RAY ROCHER
 MARY FULLER
 CELIA MILLER
 MARTHA BURNLEY
 LENA FRANCIS MITCHELL

ANNA LOU HEATER
 MAURICE BAILEY
 PEGGY MEGIBBEN
 LAONE YOUNG
 FRANCES NELLE BOYD

JAMES H. BLALOCK
 WILMA GARDNER
 VERNON E. WILSON
 MARGARET HAMILTON
 ALICE POOL

PHARIS MALOY
 MARIE HOLT
 LUCILLE HOLT
 WILLIAM CARNEAL
 GERALDINE HAMMOCK

TOM STEVENSON
 DOROTHY DOSSETT
 BETSY K. WILSON
 GENIEVEVE GARDNER
 W. D. SAWYER

MARTHA WOODEN
 MATTIE CALDWELL
 D. LOU NORRIS
 L. BIRD BRYAN
 REBA E. DUNN

WALTER MURRAY
 CAROLYN LAMBIRTH
 "LOU" MULLINS
 LOU DELLA WAGGONER
 FRANCES YATES

ROBBIE McADDOO
 WILLIAM BOLING
 LILLY ATKINS
 PEGGY HOFFMAN
 REBECCA HILL

JIMMIE BAILEY
 FLORENCE MOORE
 JUNE DIXON
 MARTHA DEAN CHANDLER
 DOROTHY WRYN



FRESHMEN



Left to right

LACEY DOWNEY
MARGARET SCYSTER
HARRIET HOLLAND
LOUISE METZGER
HAL SAUNDERS

MADELINE QUIREY
ADOLPH COSBY
JUNE BUSHART
ROBERT GILLIS HESTER
ELIZABETH ELDER

J. L. JONES
RUTH ANNA BLACK
DON MILNER
BETSY TREAS
LOUIS LORIAUX, JR.

AUDREY OLIVER
NORMA BILLINGTON
ROBERT W. IVY
BEN D. SUBLETT
BONNIE MIDDLETON

M. C. GARROTT
ALICE CRANE
ROSEMARY ROBERTS
ALICE SOLOMON
VERGIL GIPSON

MARY CLARK CARMAN
CARLENE CALDWELL
MILDRED JOHNSTON
HAROLD LOGAN
NEVA GRAY LANGSTON

M. C. BOWLES
MARGARET GOODWIN
ERNEST R. JONES
ED MORGAN
CASWELL HAYES

EVYLYN KINSEY
SANFORD L. DAVIS
FRANCES CLARK
V. J. KENNEDY
NELLENE EZELL

CLIFFORD BAKER
MARGARETTE STEPHENS
FRANCES STUCKY
MARY C. CALLWELL
JAMES MADDOX

FRESHMEN

RUBLE CRUTCHFIELD
IRMA GRAY GILLIAM
GRADIE BARCLAY
JIM SCOTT

MARGARET BINGHAM
LYNWOOD MORRIS
MARTHA ELLEN MCWATERS
ARTHUR COLAIANNA
DOROTHY CALLIS

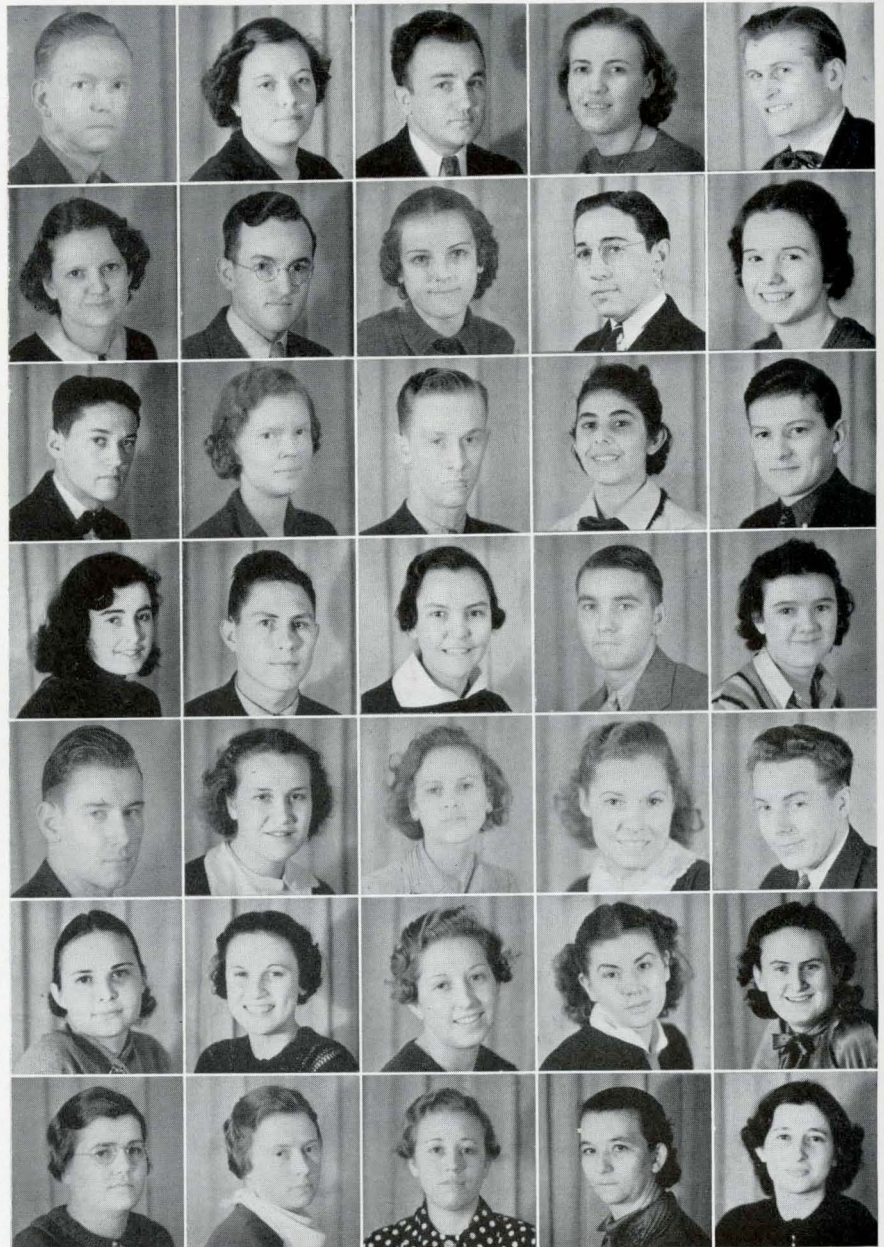
JAMES SMOOT
MATTIE JO HILL
MARVIN BALDREE
MARY LOUISE HOMRA
LEE WILLIAMS

VIOLET KNIGHT
JACK BELOTE
ANNA FRANCES OLIVER
ELDON BYRD
MILDRED WRATHER

FRED SORG
CHARLENE MCCLURE
HERDIE STEWART
PHOEBE SMITH
HARLAN INGLIS

THEDA CRIDER
MAXINE HARDIN
CRYSTAL FONDAP
SUE WADE
MARY ELLEN HINANT

HELEN NICKELL
MABEL FUTRELL
MARTHA FONDAP
MARTHA FRANKLIN
CLAUDINE BROWN



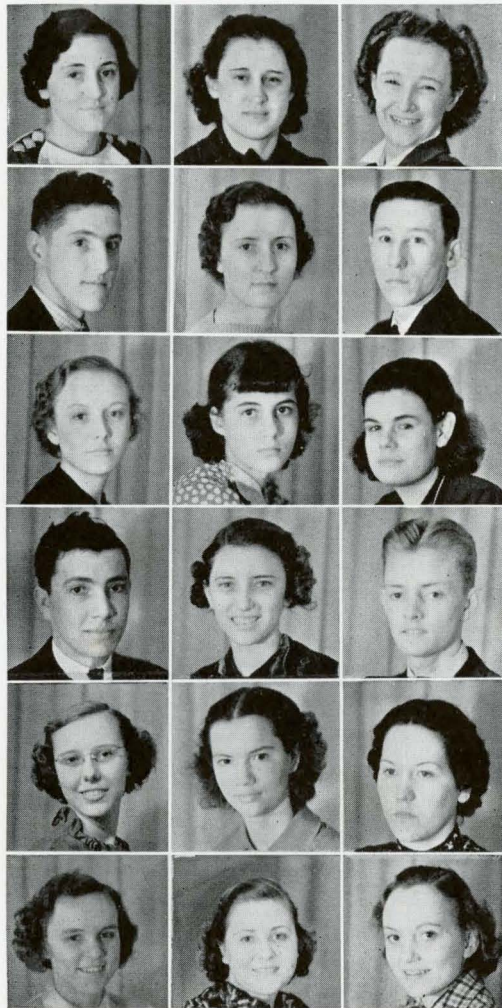


ORTON HAMBY

THE SHIELD wishes to take this opportunity to pay tribute to Orton Hamby, a student of Murray State College, who in the opinion of the staff, has produced photographs of the highest artistic merits. From his candid "snaps" to his ultra-modern angle shots, one sees and feels the sincerity with which his work has been executed. We see through the eyes of an artist not just buildings or people, but souls. His work lives, and in its "living" enables us to re-live our college life. So to you Orton, we express our appreciation for your time and effort in making this year's

SHIELD a success.

TRAINING SCHOOL SENIORS



Left to Right:

DOROTHY NELLE FUTRELL

LEILA ELLIS

MARY ELIZABETH BENNET

DAN LASSITER

DOROTHY BARNES ERWIN

PRESTON BOGESS

FAUSTINE ADAMS

NANCY MELLEEN

MARGARET RUTH MORRIS

KENNETH BAILEY

REBECCA LASITER

CHARLES STAMPS

ANGIE MARY McNUTT

EDNA PEARL ERWIN

MYRTLE GARDNER REEVES

DORRIS CHURCH

ARA NELLE BEASLEY

MARILYN MASON

HIGH SCHOOL UNDERCLASSES

JUNIORS

Dorothy Baucum, George Boaz, Robert Cherry, Herbert Drennon, Anna Lee Evans, Nelle Evans, Rebecca Farmer, Frances E. Gatlin, Nelle Haley, James Robert Harding, Evelyn Hicks, Helen Hire, Martha L. Hughes, Roberta Jordon, James McDaniel, Dorothy Moore, Colvin Morris, Minnie Sue Monroe, Laura Nelle Nanny, James Redden, Thelma Riley, Earlyne Stubblefield, Margaret Mae Seift, Glen Suttular.

SOPHOMORES

Evelyn Call, John F. Curd, Jesse P. Darnell, L. A. Gough, Ruth Howell, Martha Lou Hays, Deison B. Herndon, Eddie Sue Hicks, Amittoi Hillman, Evelyn L. Jewell, James P. Lassiter, Grayson, McClure, Bob Melugin, G. C. Miller, Jane Morris, Mary Elizabeth Redden, Anne H. Richmond, Barbara Schackleford, Ann Elizabeth Thompson, Bessie Thurmon, Frances Vance, Lattie Venable, Marjorie Wall, Mary B. Workman, Billy Hipford, Martha Frances Ford.

FRESHMEN

Oneida Ahart, Verden L. Bogard, Ben Boggess, Richard Boggess, Dortha M. Broach, Mary Adams Collis, Helen Camp, James Dale Clapton, Billie Earl Cohoon, Jenny W. Coleman, Joe Compton, Wm. Everett Dunn, Hugh Ervin, Burnette Farley, Elaine Farris, Elizabeth Rhea Finney, G. W. Gardner, Emma Sue Gibson, Wade Graham, Mary Gresham, Mary L. Hale, Mary Virginia Hoffman, Oliver Hood, Tassonilla Hopson, Wilna Horton, Conrad H. Jones, C. W. Jones, Dorothy Nelle Jones, Dorothy Neil Jones, Mary Jones, Dortha Kelly, Anna D. Lancaster, Rhoda Sue Mahan, Ben Heys Miller, Evelyn Oglesby, Lorine Putman, Martha Robertson, Virgil Robertson, Elizabeth Thomas, Louise Thurmond, Inez Waldrop, Wells Lovett, Herman K. Wicher, Evelyn Wilcox, Mildred Winchester.



THE ELEMENTARY GRADES

FIRST GRADE—Eugene Adams, Imogene Adams, Bobby Allen, Lola Buchanan, John Butterworth, Phil Crawford, Edward Diuguid, Doris Gibbs, Patricia Heath, Joseph Holsapple, Norman Gresham, Shirley Jeffrey, W. A. Jewell, Betty Jane Jones, Jacqueline Kendall, Eugene Jones, Ann Keys, Jack Knight, Edgar Lee Lovett, Ralph Morris, Jun'or Orr, Junior Robertson, Billy Rowlett, Deloris Rudolph, Jack Salmon, Annie Lou Steley, Chad Stewart, Ju-nita Underwood, Thomas Wood, Betty Yancey, Billy York.

SECOND GRADE—Junior Bailey, John Boggess, Joan Carraway, Jean Cochran, Bobby Denham, Charles Dowdy, Rodney Drennon, Jimmy Dye, Wanda Lee Farmer, Joan Hendon, Hubert Haley, James Holsapple, Billy Horton, Bobby Horton, Carl M. Howard, Glenda S. Hughes, Dee Jeffrey, Alice Fay Keys, Alfred R. Lassiter, Julia Ann Lowry, Clara Jane Miller, Glen A. Murphey, John Neal Purdom, Jimmy Richardson, Dortha Richman, Eloise Rogers, Joan Shroat, Pauline Stites, Ted Wells Thompson, Miles Tune, Bobby Ward, Clara May West, Mary Travis Willard, Kenneth York, Wilmouth York.

THIRD GRADE—Neva Gray Allen, Evelyn Ahart, Minnie Buchanan, Jean Butterworth, Janice Crawford, Mae Ellen Erwin, Janette Farmer, Jo Ann Farris, Kathleen Gibbs, Joe Ben Guthrie, Anna Vae Hart, Hazel Anna Hood, Linwood Hortin, Fred Jeffrey, Mary Jane Kennedy, James T. Lovett, Lee R. Melugin, Bobby Sue Orr, Bobby Jane Padgett, June Robinson, Rob Smith, Mary Frances Todd, Billy Thurman, Charles Washam, Willodean Woods, Dorothy Wilkinson, Virginia Wilkinson, Charles Workman, Nancy Wolfson, Jean Hale.

FOURTH GRADE—Charlene Allbritten, Wilbur Allen, Lillian Boggess, Bonnie Brown, Thomas Buchanan, Samuel Elliott, Anna Jean Gibbs, Bonnie W. Holsapple, Charlotte Jackson, Rosemary Jeffrey, Mary Queen Jewell, Mildred Jones, Bobby Nell McKeel, Charlene Orr, James Richman, Betty Shroat, Kenneth Slaughter, Babs Stewart, Walter Stalls, Evelyn Todd, George Ann Upchurch, Jack Ward, Frances Washam, Naomi Lee Whitnell, Dorris Williams, Virginia Nell Wilkinson, Eva York.

FIFTH GRADE—Belva Mae Armstrong, Kathryn Boggess, Joe Butterworth, Linda Sue Callis, Billy Joe Caudill, Ben Crawford, John Pat Crawford, Thomas Ernstberger, Charlotte Guthrie, June Hendrick, Sam Henry, Dicky Hodd, Brent Hughes, Mary Anna Huie, Mary Lou Jeffrey, Mildred Knight, Charles Lassiter, John Daniel Lovett, Gweneth Petway, Charles Robertson, Flavil Robertson, Mildred Stites, James Robinson, James Thompson, Rebecca Thurman, Galin Thurman, Joe Tune, Billy Watson, Glen Price Willard, Nida Young.

SIXTH GRADE—Hubert Barnes, Jamie Branch, Beth Broach, Mary V. Buchanan, Cecal Cook, Lee Roy Denham, Harold Doran, Frances Farris, Harold Gibbs, Charles Hale, Evelyn Henry, Joseph Hughes, Mildred Hutson, Billy Jewell, James T. Kemp, Joe Kelly, Maxine Lancaster, Lucille McGuire, La Don Mercer, Evelyn Newport, Bobby Packman, Mary Jo Pentacost, Mancil Vinson, James L. Walston, Joe Windsor, Marianna Skaggs, Ulas Woods.

SEVENTH GRADE—Charles Baucum, Catherine Robbie Boggard, Eva Carl Boggess, Lexie Boggess, Joan Butterworth, Jean Crawford, Laurine Dickerson, Larry Doyle, Henry Erwin, James Maurice Evans, Mary Virginia Futrell, Joan Harrell, Eleanore Anne Hire, Zane Halcomb, Joe Hughes, Billy Joe Huie, Joe Clifford Jones, Lavina Jones, Billie Bells Lawrence, Bobbie Lawrence, Elie Kynois McClure, Velma McClure, Joe Pat McReynolds, John Calvin Nanny, Milton James Newport, Jane Elizabeth Orr, Elizabeth Parker, Billy Irvan Ross, Anna Belle Stamps, Mary Florence Thurman, Ray Waggoner, Albert Logan Watson, Willard Wayne, Floreta Joe Wells, Juanita Williams, Edna York, Bettye Ann Ford.

EIGHTH GRADE—W. D. Adams, Richard Armstrong, Fred E. Atkins, Imogene Bailey, Paul Dee Bailey, Tremon Baucum, Jr., L. B. Boggess, Elizabeth Ann Booker, Josephine Broach, Charles Callis, Charles Clark, Edwin Cohoon, Herman K. Ellis, Bobbye Nelle Enoch, Luzirene Ernstberger, K. C. Farley, Herman Farley, Richard Gholson, Lou Ella Gibbs, Martha Grier, Gene Graham, Martha Belle Hood, Hubert Jackson, Robbie Lou Jewell, Sue Lassiter, Evelyn McDaniel, Leon McKeel, Margaret Miller, C. R. Outland, Dale Parrish, Joe Robinson, Martha Skaggs, J. H. Theobald, Dortha J. Thornton, Guthrie Thurmond, Joe Pat Ward, Robert Ward, Charlotte Wear.



THE PRACTICE TEACHERS

Just as every science department has its laboratories, so the practice teachers have their training school. This unit of the college is one of the most important units in the school. The purpose and aim of Murray is to train teachers. This gives invaluable aid to the student teacher as it brings him face to face with problems that he will meet in later life. It gives the students of the training school a better perspective since it brings to these pupils the newest of knowledge, the most up-to-date methods, and in so doing keeps them on their toes and thus gives them a better chance to learn. Also it gives the student a better chance for individuality.

Every student that teaches must be fully trained in his field before he is allowed to attempt teaching.

This system brings one of the best methods now known into full use. Namely—To learn by doing.





Orchestra

Piano, Darnell; *Violin*, Helen Hire; *Clarinets*, Oliver Hood, Louise Putnam, Angie Mary McNutt; *Bassoon*, Robert Cherry; *Bass Horn*, Wayne Willard; *String Bass*, M. L. Hays; *Cornet*, Calvin Morris; *Student Teacher*, Mr. L. J. Byrum.



Trio

Student Teacher, Miss McGehee; M. E. Bennett, Martha Robertson, Alice Parker, Louise Putnam, *Pianist*.



Girls' Glee Club

First Row — Arranelle Beasley, Dorothy Barnes Irwin, Dorris Church, Nelle Haley, Elizabeth Ray Finney, Dorothy Baucum, Louise Putnam, Dorothy M. Futrelle; *Student Carrier*, Bill Carrier.

Second Row — *Critic Teacher*, Miss Hinkle; Marjorie Wall, Helen Hire, M. E. Bennett, Martha Lou Hays, Marilyn Mason, Alice Parker, Minnie Sue Monroe, Martha Robertson.

A C T I V I T I E S O F T H E

Basketball Team

Front row, left to right
—William Everett
Dunn, James Redden,
G. C. Miller, Don Las-
sitter, Vergil Robert-
son.

Second row, left to
right—Coach Clifton
Thurman, Wade Gra-
ham, John David
Thompson, James Lee
Calhoun, G. W. Gard-
ner, Preston Bogess.



Debating Team

Charles Henry
Stamps, Leila Ellis,
Ann Thompson, Mar-
jorie Wall, Cecil Gen-
try, *team coach.*



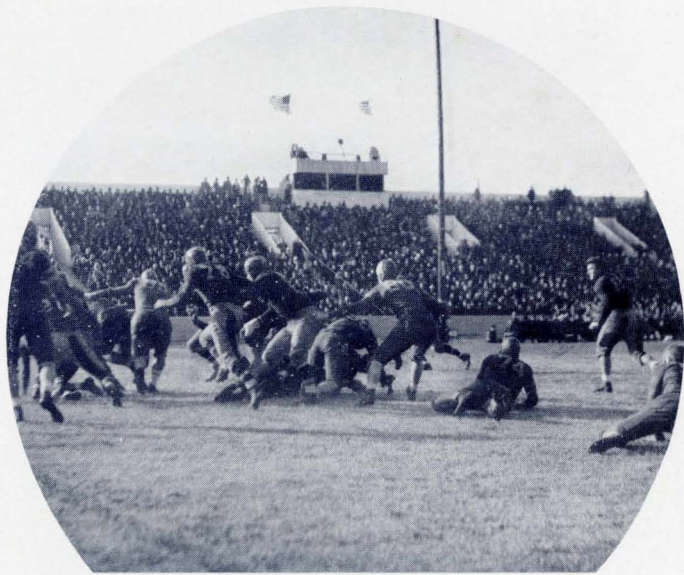
Physical Education

Physical training in
the Training School is
under the supervision
of Coach Roy Stewart.
Practice teachers Gun-
ter and Wright dem-
onstrate one phase of
the Physical Educa-
tion Program.



TRAINING SCHOOL..

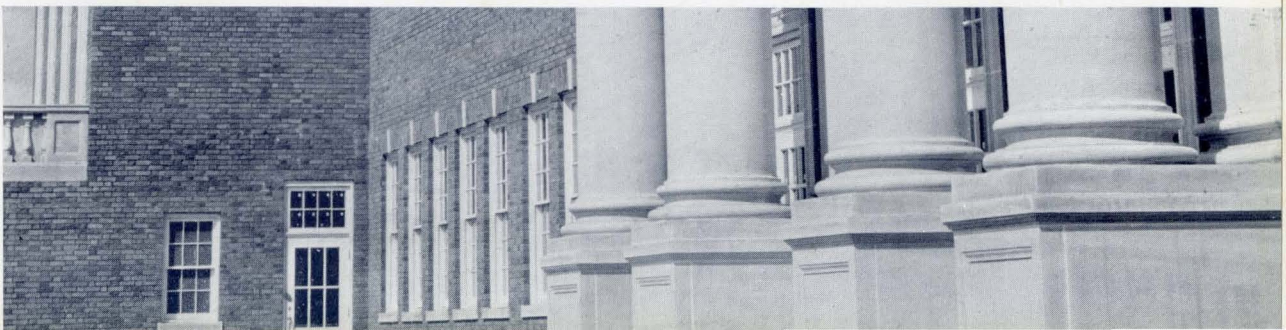
Athletics



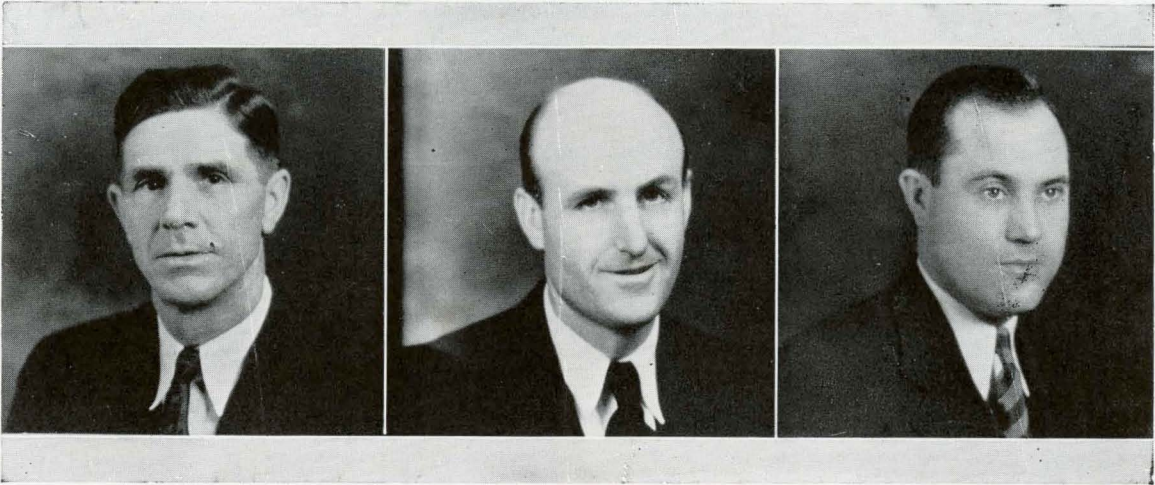
In victory or defeat—a Champion of Champions . . . In form, perfection . . . In a word, Thoroughbreds . . .



CARR BUILDING • • CENTER OF HEALTH ACTIVITIES



THE COACHES



CUTCHIN

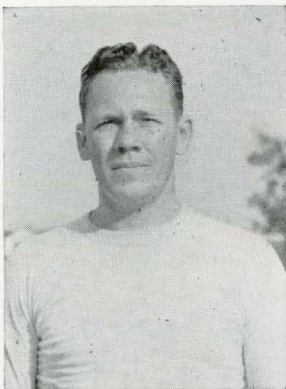
STEWART

MILLER

Coach Cutchin, as usual, came through with a winning combination. His team being as always the foremost in Kentucky. He is a man of far-seeing ability. His ability is also recognized in that he is the director of athletics at Murray.



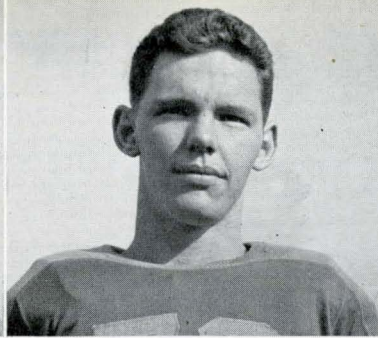
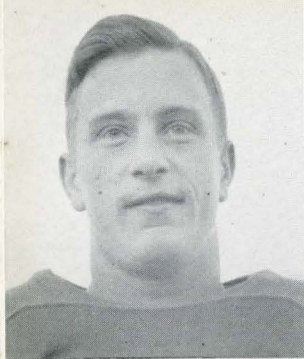
Coach Stewart is the Director of Physical Education. A good man for the position, he believes in every individual having an opportunity for physical betterment. He is also head football coach and is a builder of good teams as well as a builder of high ideals. Good sportsmanship is an outstanding characteristic of all of his teams.



EDMONDS

To Coach Miller should go lots of credit that is given to the fine teams that Murray puts out. He is the man who takes the raw material and gives it the first form that it attains. Miller is one of the reasons for the perpetual success of the Varsity.

Coach Edmonds is the able assistant to Coach Stewart. As a man with "football brains," he shines. A valuable man in developing line men. He is the keeper of the Thoroughbreds, being the Dean of men.



FINLEY

ALLISON

HARDIN

DENNIS "DUTCHMAN" HORLANDER

Guard

"The flying dutchman," sophomore from Owensboro, understudy of an all S. I. A. A. guard, he will be hard to handle in his next two years of competition.

HUGH "FINNIGAN" FINLEY

Quarterback

Finnigan was without a doubt the best passer of the "36" Breds. This gangling type triple-threat quarterback, with two more years should give Murray fans many a thrill. Dyersburg, Tennessee, is the donor.

JIM ALLISON

End

Possessing equal ability on offense and defense, "Owensboro Jim" could always be counted on when the going got tough. Jim is a junior and has one more year of competition.

CARROLL W. HARDIN

Center

Pass defense his hobby. C. W. should be the nucleus of the forward wall when the "37" Thoroughbreds go to the wire, carrying on a tradition of his Jellico, Tennessee, predecessors.

JULIAN "HANS" HENDERSON

Captain of the team, picked for his qualities and proved to be the best Murray ever had. He graduates after giving three years of sterling service. A true Thoroughbred.

WM. H. "BENNIE" COOK

Tackle

Paired with Land in the forward wall, this 200 pounds of bone and muscle from Paducah, Kentucky, did more than his share to uphold the banners of Murray.

THE THUNDERING

EDWIN "HAWG" GUNTER

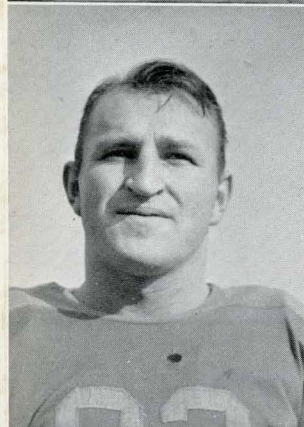
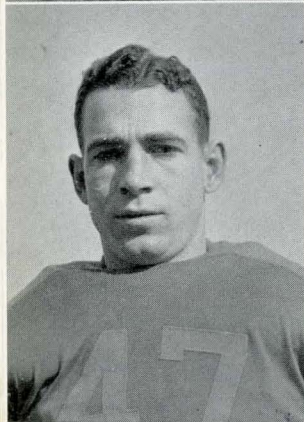
Center

A native Paduchan, his accurate passes and ability to back up the line gives him a niche in Murray's hall of game. The hole left by his graduation will be hard to fill.

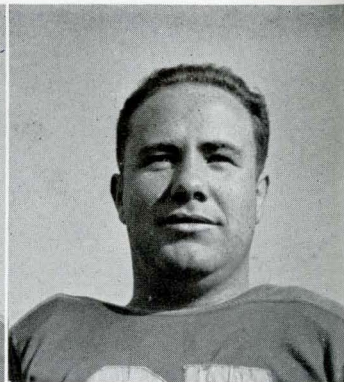
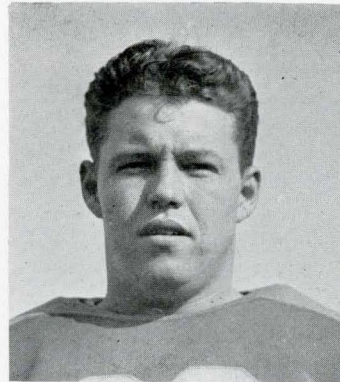
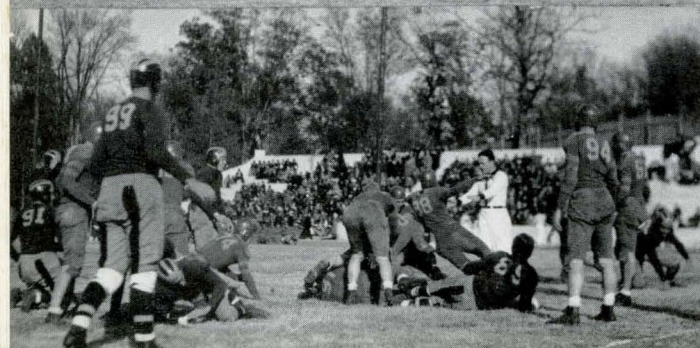
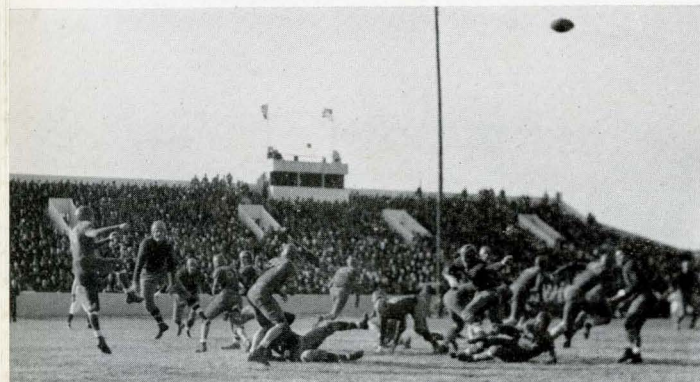
HOMER "PETE" WRIGHT

Tackle

Product of the Volunteer State, "Pete" was a powerhouse in Murray's attack for three years. This senior and all-around man will be severely missed in 1937.



HORLANDER
HENDERSON
COOK



GUNTER

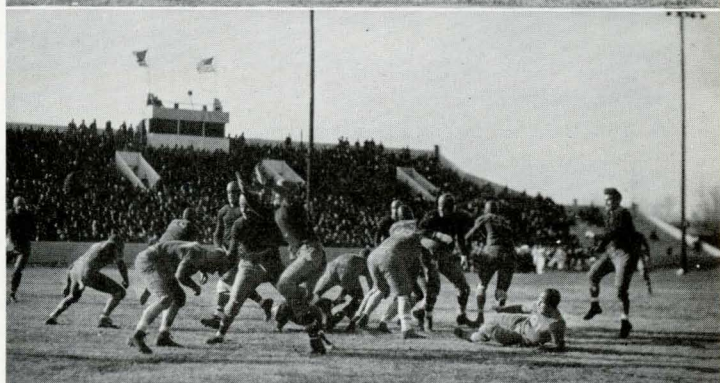
WRIGHT

Murray gets off a kick for a long gain as the line holds the Western invaders back.

Henderson looks on as a Western play is stopped for no gain.

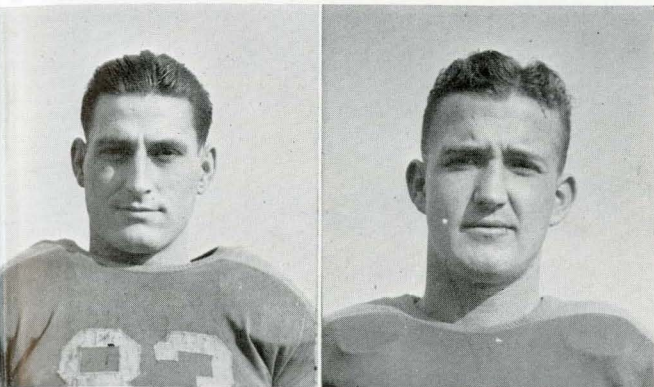
Murray blocks as the backfield gets off a long forward pass.

Thompson backs up the line as our Western friend is stopped.



ORGAN

COCHRAN



JOHN R. "JUG" MITCHELL

Half-back

Clay, Kentucky, produced this sophomore who was adept at handling defensive tackles and stopping offensive ball-toters on the line of scrimmage.

ELMER "MUTT" COCHRAN

Guard

Blocking fullback with machine-like precision, diagnosing plays with a keen football mind led to the election of this Paducah boy as captain of the "37" Thoroughbreds.

THOROUGHBREDS

RUSSELL SNYDER

Tackle

"The smashing mountaineer" has dealt misery to the opposition the past two years. The final year of this Corbin, Kentucky, youth should be one that will long be remembered in Murray's football annals.

JOHN "KAYSBROOK" JASPER

Fullback

A hard tackler, blocker, and runner. John displayed his wares in the true West Virginian style. He has two more years in which to perform for the racehorses.

SNYDER

JASPER

LAND
TOLSON
JONES

CASEY "POS" ORGAN

Guard

This Morganfield product—captain of the "35" Thoroughbreds—Best open field blocker in Murray's history—Brilliant defensive play—Regular for three years. All these combined gained for him a berth on the all K. I. A. C. and S. I. A. A. teams.

HERMAN "JELICO" LAND

Tackle

Rated as one of the outstanding tackles of the South, "Jelico" was the bulwark of Murray's defensive line. He was elected the most valuable man on the squad, and will long be remembered by Murray fans as an iron man.

JAMES "TOADY" TOLSON

Guard

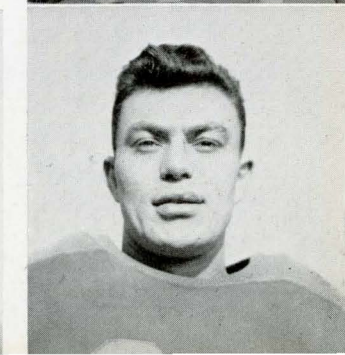
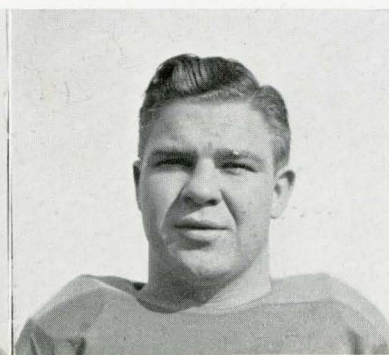
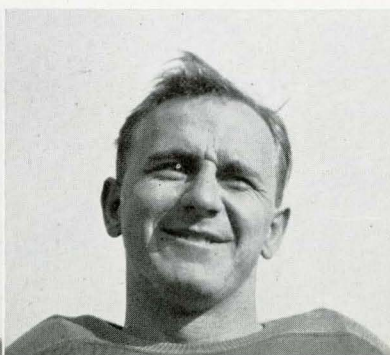
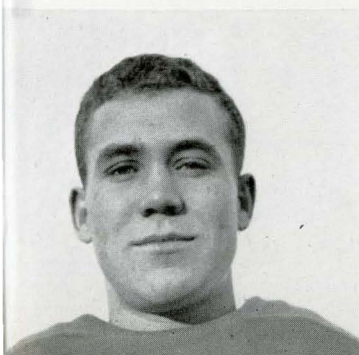
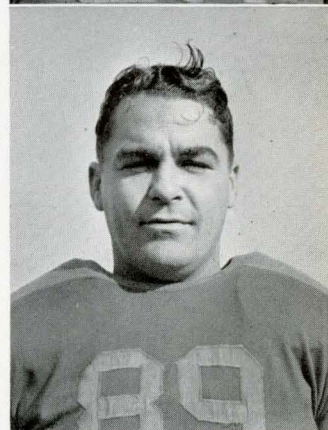
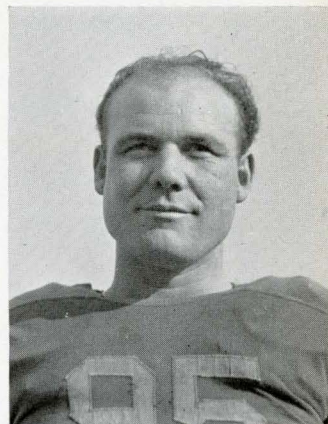
After shaking off the hard luck jinx which chased him for two years England, Arkansas' donation proved to be "a rock of Gibraltar" in Murray's defense.

FRANK JONES

End

His ability to handle defensive tackles, and to stop opposing backs on defense, won for Frank the alternate-captaincy of the 1937 *Thoroughbreds*. Jones is from Lincoln, Illinois.

MITCHELL





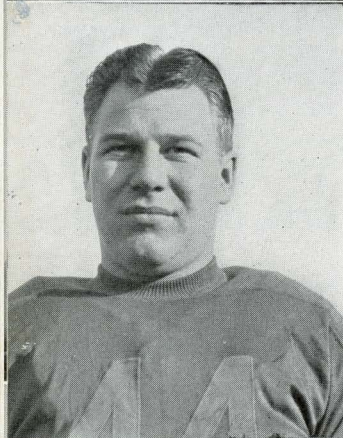
MILLER



HERNDON



FOWLER



ROBERT D. "BOBBIE" NUNN
Half-back

Hip-slinging and side-stepping was a specialty of the sophomore dynamo. Marion, Kentucky, will take their hats off to this broken-field artist, who has two more years of competition.

BURNETTE "BOB" MILLER
Half-back

Alternate-captain and a true volunteer, Bob was that line-smashing, hard-running half-back. Springfield, Tennessee, should be proud of this senior Thoroughbred.

JOE HERNDON
End

The fifth man in opposing team's backfield. Lightest linesman on the squad, he will be remembered for his fight and determination. "Smoke" is a senior from Bruceton, Tennessee.

PAUL "SAD" FOWLER
Fullback

A "Yankee" of Kankakee, Illinois, "Sad" could be depended upon to pick up those yards when in need of a first down. He was also an excellent defensive fullback. His senior year should see him at his best.

NUNN
PUTNAM
BASAN

LYLE PUTMAN
Center

Sophomore from Decatur, Illinois. "Put" should carry on in Thoroughbred style his next two years.

HARRY BASAN
Half-back

As a defensive half-back Harry possessed the knack of stopping offensive backs on the line of scrimmage. Harry's services will be missed in '37.

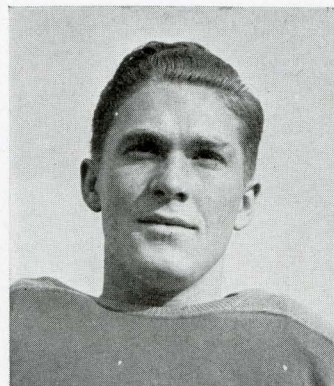
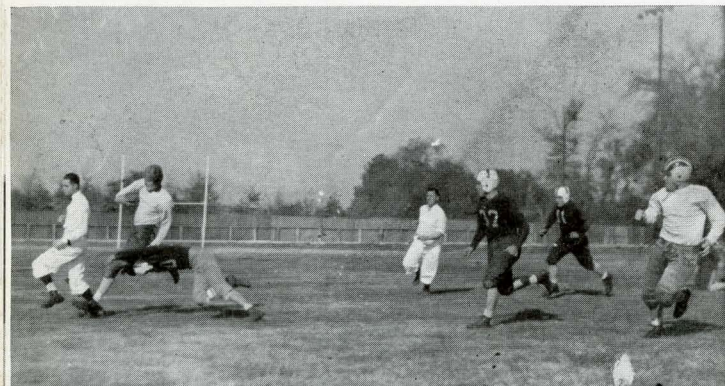
THE THUNDERING

TOM ATWELL
Halfback and End

Possessing more pass-catching ability than any one on the squad, this speedy "Red-Head" of Portageville was shifted from half-back to end.

ERRET GARDNER
Manager

"Give me a towel, Eric," was the statement that could be heard in the dressing room every afternoon after practice. "Eric" is a senior.



ATWELL

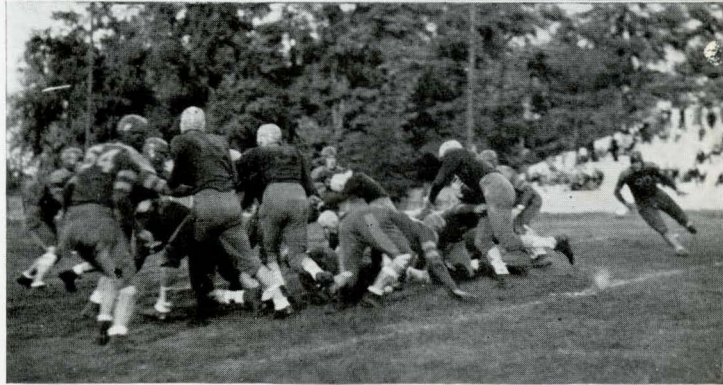


GARDNER

Murray hits the dust as the official scurries for cover.

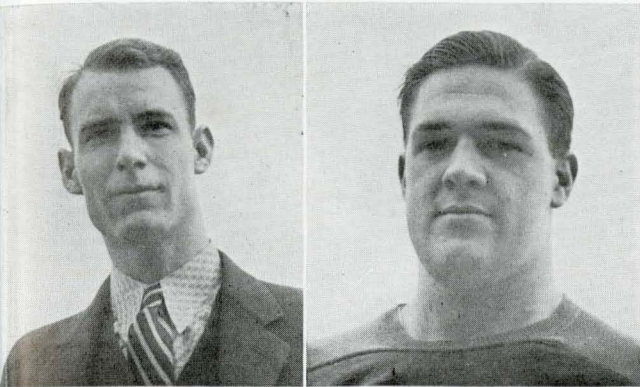
Iron man "Pos" Organ holds the line and stops the play for no gain.

Coach John exhorts his proteges to attain greater heights.
Smashing the line and coming around end to chop the "Miss" ball carrier.



McLEAN

DIUGUID



HAL "SLIM" McLEAN
Trainer

Looking after all charley horses, strains, sprains, and all types of injuries, "Slim" was adept at the art of using tape.

JIM EDD DIUGUID
Tackle

A Murray high school product, competing against two of Murray's outstanding tackles, could always be depended upon. Jim Edd will be lost by graduation.

THOMPSON
BLAND
RUSSELL

LOUIS APPLIGATE
Tackle

This sophomore from New Jersey did a fine job of being the "Handy-Andy" of Murray's squad, playing tackle, guard and end in his first year of competition.

WILLIAM "BILL" THOMPSON
Quarterback

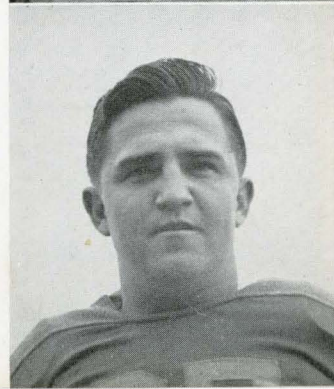
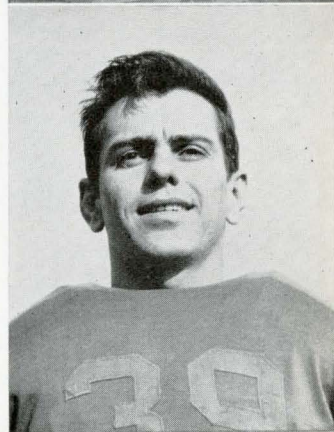
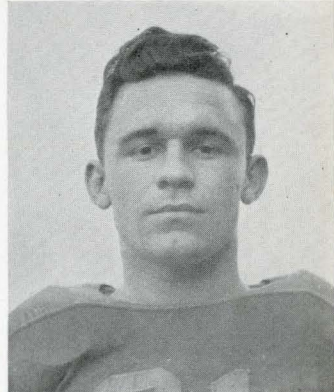
A combination of speed and accurate passes enabled this Owensboro boy to develop into one of Murray's great quarterbacks. Making honorable mention on the All Little America.

GENE BLAND
End

A consistent and dependable end his sophomore year, this Cairo boy should be a sensation, having two more years of competition.

W. P. "DUB" RUSSELL
Tackle

Two hundred fifteen-pound Murray high school product, "Dub" should be one of the mainstays in the Murray forward wall his senior year.



THOROUGHBREDS

CLAUDE "MAC" McRAVEN
Half-back

This triple-threater could always be depended upon to pull off a good play during a game. Great honors are in store for Portageville's "Blond Demon."

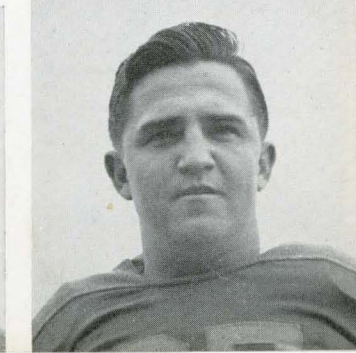
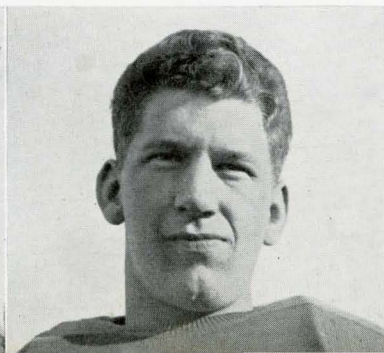
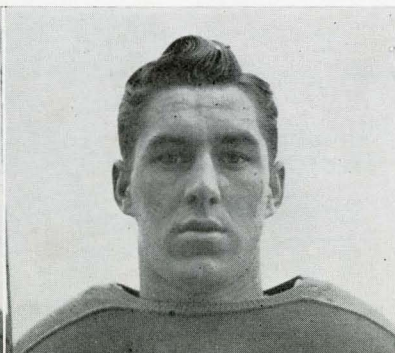
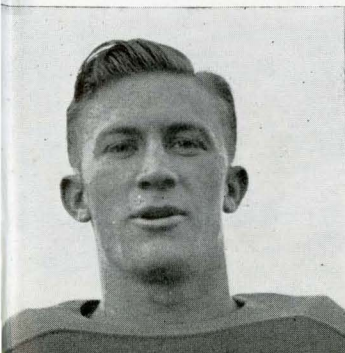
DALE DIEBERET
End

This lanky pass-snagging end proved to be the sophomore sensation. "Dieb" is from Decatur, Illinois.

McRAVEN

DIEBERET

APPLIGATE





• • • THE SEASON AS SEEN

With one of the most baffling seasons in the U. S. completed, Murray closed the season with four losses and five victories. The Murray Thoroughbreds opened their season against Georgetown in Murray with a night game, in which Murray was very impressive. Land, Cook, Organ, Gunter and Tolson were outstanding in the line and "Big Bob Miller" and Captain Henderson played a heads-up game in the back-field. Score, Murray, 27; Georgetown, 6. For the next game Murray invaded eastern Kentucky to do battle with the Morehead Eagles. Murray was the heavy favorite, but met an inspired eleven. Dale Diebert, Murray's sophomore end, recovered a fumble on Morehead's 25-yard line to pave the way for the winning score. Bill Thompson's 48-yard dash for a touchdown was the highlight of the game. Casey Organ converted both points after touchdown. Score, Murray, 14; Morehead, 7.

Murray next waded through Ouachita College to the tune of 21 to 0 before a crowd of over 3,000, including guest high school students of this area. Ouachita had

formerly tied Baylor of Texas. The work of Cook and Land in the Thoroughbred line was outstanding. Captain Henderson achieved twelve points.

Next the "razzle-dazzle" and "Hitt," hit Murray. This was October 17th. Homecoming and High School Day. The 'Breds opened as usual with a power-house attack, Bill Thompson, Owensboro quarterback, plunged over from the six-yard marker for the first touchdown. Jimmy Tolson, Murray guard, tackled Hitt behind the goal line to make the count 8 to 0 at the end of the first quarter. From then on "Hitt" bewildered Murray with the "razzle-dazzle." Murray lost 20 to 14. Next week Ouachita defeated Mississippi College 31 to 6. A tipped pass over the goal line brought victory to the 1935 S. I. A. A. champs, the Blue Raiders of Middle Tennessee. Murray was off to a great start; a pass from Thompson to Herndon was good for a touchdown. Organ converted. Then late in the same period Murray staged a sixty-yard drive, with Thompson again passing to Herndon for another touchdown. Land, Gunter and Herndon stood out in Murray's line, with Thompson, Fowler, and Captain Henderson in the backfield. Murray lost, 19 to 14.

The breaks just did not go Murray's way and consequently they bit the dust of a resourceful Union eleven, which took to the air only four times but on each occasion

BY THE SPORTS EDITOR . . .

with a successful heave at a vital point of the game. The game was exceptionally rough, leaving a high toll of injured men on the Murray roster. Here they lost Joe Herndon for the season with a broken jaw. Land, Murray's giant tackle, was constantly a power in the Murray line while "Tubbo" Gunter also rendered excellent services. Murray lost, 20 to 7. The Thoroughbreds defeated Tennessee Polytechnic Institute by the score of 47 to 0, scoring at will. Thompson scored from the three-yard line in less than the first five minutes of the game. "Tubbo" Gunter directed the strong Murray defense. Murray staged a second half come back to defeat the inspired Memphis Teachers 20 to 6. "Big Bob Miller" and "Hans" Henderson played sterling ball. Thompson got off on two nice sprints of twenty-three and sixty yards. Land and Organ stood out in the line.

Murray, playing a desperate game but again in hard luck, lost to Western by the score of 14 to 0 before a crowd of over 5,000. Murray did her best but the "Toppers" were just too tough. Captain Henderson, playing his last ball game, turned in the best game of the day.

ALL-S.I.A.A. SELECTIONS

FIRST TEAM

FLOYD BURDETTE

ETHRIDGE MCKELL

SECOND TEAM

LOUIS GRAHAM

ALL-K. I. A. C. SELECTIONS

ETHRIDGE MCKELL

SEASON'S RECORD

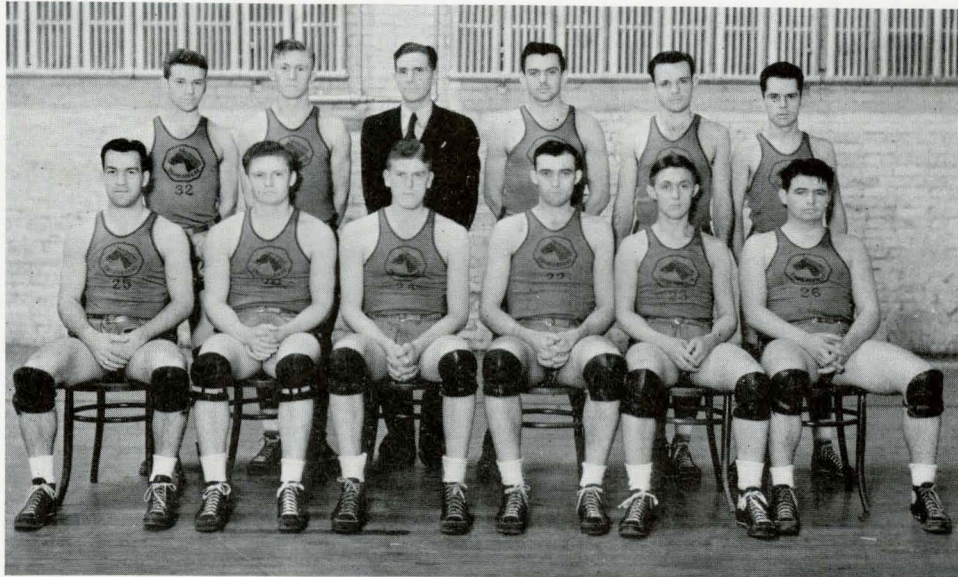
Murray	47;	McCracken County All-Stars	18
Murray	48;	Arkansas State	27
Murray	53;	Carter Shoe Company	26
Murray	40;	Tennessee Tech	20
Murray	42;	Mississippi College	27
Murray	33;	West Tennessee	30
Murray	49;	Millsaps	28
Murray	33;	Mississippi College	30
Murray	52;	Delta State	32
Murray	46;	Middle Tennessee	17
Murray	43;	Union	32
Murray	35;	West Tennessee	19
Murray	26;	Western	45
Murray	41;	Union	25
Murray	31;	Western	25
Murray	46;	Mexico City Y. M. C. A.	28
Murray	35;	Tennessee Tech	25
Murray	50;	Middle Tennessee	32

K. I. A. C. TOURNAMENT

Murray	48;	Georgetown	30
Murray	24;	Berea	23
Murray	18;	Western	30

S. I. A. A. TOURNAMENT

Murray	45;	La. Normal	24
Murray	36;	Tennessee Tech	23
Murray	44;	Morehead	40
Murray	32;	Western	37
Total	997;	Total	683



TOURNAMENT PLAY

K.I.A.C. TOURNAMENT

In a rough and tumble battle, the Bluebloods won their first game in the Richmond affair 48-30 over Georgetown's big Bengals. Murray clicked whenever they had to, and were never forced to relinquish their lead. Western had advanced in the tournament by winning over Eastern and Wesleyan.

Leading throughout the game, Murray's hopes of entering the KIAC finals almost went up in smoke, as a determined bunch of Mountaineers from Berea came up to within one point of the Thoroughbreds in the final eight minutes of play with Clark and Wright leading the Madison County team. McKeel was high-point man for Murray with eight markers. Western entered the finals, as they had an easy time whipping Transy 53-36.

Playing the best ball that they played all season long for eleven minutes of the first half, Murray's weary crew of basketeers went under as Western's saved-up energy enabled them to gain a lead over the Murraymen during the last few minutes of the first half, and protect it in the final period. The final score was 30-18.

S.I.A.A. TOURNAMENT

Murray opened the S.I.A.A. tournament at Bowling Green in an impressive manner as they defeated Louisiana Normal 45-24. The feature of the game was the entrance of Gene Bland into the scoring column for Murray.

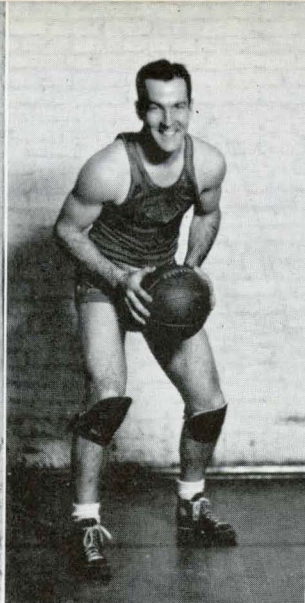
Tennessee Tech proved to be easy for Murray's smooth working team, as they used their "Sunday Shots" only when necessary to win 36-23. Graham was "hotter than a Fourth of July firecracker" as he looped in ten points.

Only the smart work of Murray's courageous captain, Willard Carroll, kept the Racehorse in the S.I.A.A. tournament, as Morehead was almost dumping them unceremoniously into the trash-pot. Carroll's brain-work enabled the Cutchin-coached team to tie the score at 38-all at game-time, and the Racehorses went ahead 44-40 in an overtime period. Western had a difficult time in ridding themselves of Union, but finally accomplished the feat 40-33.

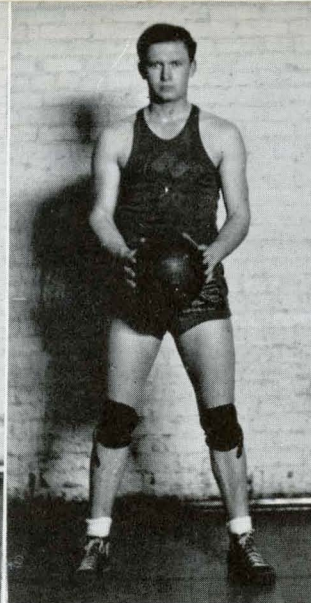
Flash: S.I.A.A. FINALS SCORE: In points, Western 37, Murray 32. Fouls: Murray 15, Western 5. This in itself tells the story of the most gallant fight that any Thoroughbred waged against the greatest odds that Murray was ever called to face. Out scoring the Hilltoppers in field goals, Murray found themselves unable to cope with the strong free-throw artists from Western. The greater part of the last half was spent in Western "practicing" free throws for the coming year. The entire Murray team put up an excellent exhibition of how to play basketball. Carroll, Graham, and Bryant wrote "Finis" to their brilliant meteoric careers of hitting the basket for Murray, and the entire Murray student body was satisfied with the showing Murray made against the 'Toppers.



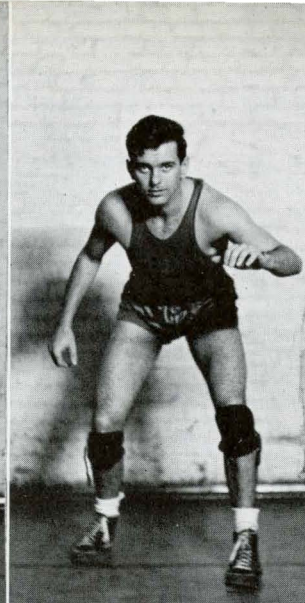
Capt. Willard
Carroll



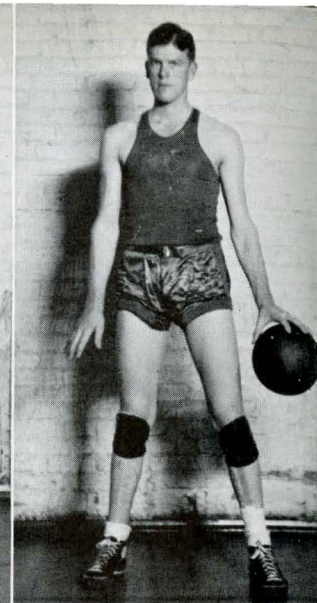
Paul
Fowler



Keith
Bryant



Gene
Bland



Floyd
Burdette

★ THE PRIDE

CAPTAIN WILLARD "MUTT" CARROLL—One of the smartest and most aggressive leaders ever to play S. I. A. A. basketball. Five feet eleven inches tall, he really made his height work for him as he was leading the Thoroughbreds through thick and thin. He scored 116 points offensively, but that doesn't spell anything, as he stood out in leadership both on the offense and defense. His loss to Murray State will be keenly felt. He matriculated from Heath, "the home of West Kentucky basketball," and is married.

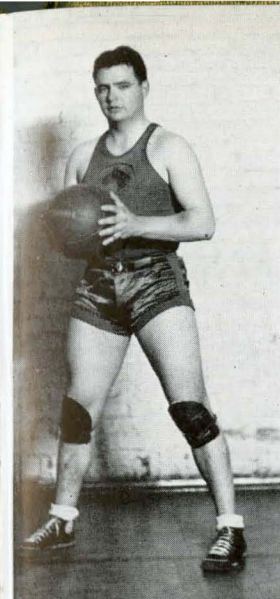
PAUL "SAD BOY" FOWLER—"Kankakee's gift to Esquire," was hampered by an injured hand throughout the season, but managed to play enough to letter and score 31 points. He was one of the "Five Jacks" last season. A six-footer, much is expected of Paul for next season.

KEITH BRYANT—Arlington senior, came out for the varsity for the first time and made good. He played frosh basketball in '33, and did not try again until this season. His valuable aid as a substitute helped Murray in more than a few instances, as he scored 32 markers.

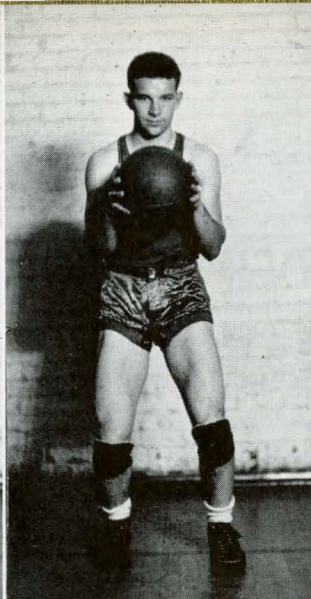
GENE "CLARK GABLE" BLAND—Murray State's sensational sophomore, stepped into ex-Captain Phillips' shoes, and filled them exceedingly well. Hampered by an injured ankle, Gene missed four games. He should prove to be one of Murray's mainstays next season. He is six feet tall, and scored 50 points during the season.

FLOYD "RED" BURDETTE—Next year's co-captain led all Murray scorers with 278 points. "Red's" hottest night was against Ross Magruder and the Carter Shoe Company team when he hit the hoop for 27 points. His ballhandling reaches the uncanny; if you don't believe us, ask "Red" McCrocklin. His six-feet, four-inch frame is dangerous under the basket as well as out in the floor. He is a junior.

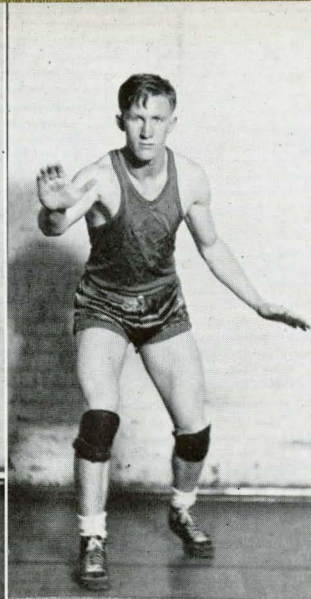
RUNNER-UP K.I.A.C.—'37



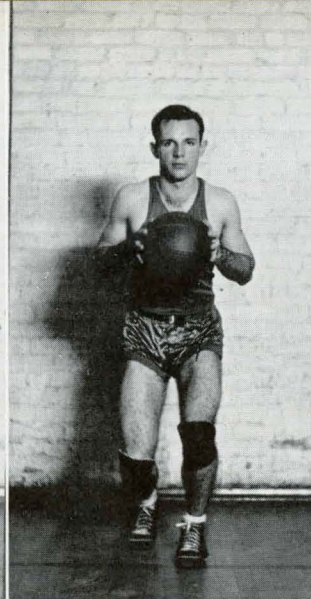
Louis
Graham



Hugh
Finley



Claude
MacRaven



James
Hurley



Ethridge
McKeel

O F D I X I E ☆

LOUIS "LULU" GRAHAM—One of the "hottest" jump-shot artists in the South, scored 148 points in the most spectacular shooting exhibitions ever staged by any Murrayman. An excellent floorman as well, Graham's loss will be felt by the Cutchmen when they line up for next season. He's married, stands five feet, ten inches, and weighs one hundred ninety pounds.

HUGH "FEENEY" FINLEY—A product from Dyersburg, Tenn., was one of the "scrappingest scrubs" that Murray has ever had. He only hit the hoop for seven points, but while he was in there the opposition knew about it. We predict that he'll give a good account of himself in the next two seasons.

CLAUD "BILL" MACRAVEN—A sophomore from Portageville, Mo. "Bill" did not play frosh basketball last season, but came through as a sophomore this season. His deadly shots from "beyond the bucket" caused the opposition plenty of wrinkles while he was in. He scored 22 points.

JAMES "BUCK" HURLEY—Another sophomore, filled in Gene's shoes capably when help was needed. "Buck" played both forward and guard, and with a little more seasoning should make Murray an excellent man. This Calvert City hoopster scored 36 points.

ETHRIDGE "BIG MAC" MCKEEL—Arkansas's gift to the Murray basketeers and the ladies, gave Murray the much-needed tip, as well as "pivoted" Murray to victory. He scored 228 points, and turned in sterling defensive performances in each and every game. He'll be co-captain next year, and in his final year in Thoroughbred halter should be a whiz.

RUNNER-UP S. I. A. A.—'37

THE SEASON AS SEEN BY

Murray's galloping Thoroughbreds breezed through another season with seventeen victories and no losses, numbering among its victims some of the strongest teams of the South. "The Class of the South" on every hand, Murray's victories almost grew monotonous as they won with the ease, finesse, and dexterity that any championship ball club possesses.

Opening their season at Heath High School in a benefit affair for ex-Captain "Sunny" Phillips, who was injured in an auto accident, Murray's great team trounced the McCracken All-Stars, a group of former high school and college stars, by a 47-to-18 count.

Their opening collegiate game was played against one of the strongest teams in the Southwest—Arkansas State—but Murray soon "solved" the problem of the Razor-backs, and went ahead to win, 48-27, with Captain Carroll and McKell leading the Bluebloods.

Carter Shoe Company, Nashville's outstanding independent quintet, was drubbed in a most routine manner, as Burdette scored 27 points. The final score against Ross Magruder, Bennett Holland, and some of the outstanding "has-beens" of Southern collegiate basketball was 53-27.

Murray, victorious on every hand, opened their S. I. A. A. campaign in a most promising manner as they took Tennessee Tech 40-20. Murray took an early lead and coasted, as Coach Carlisle Cutchin inserted six substitutes.

Mississippi College was played on the following night, and gave Murray quite a scare for the first half, but in the final period, Murray's superior quint moved out in front with "Lulu" Graham at the head of the band-wagon to win 42-27. Mark Mississippi College up on your next year's list of "tough opponents."

Starting a road trip through the Mid-South, Murray's Thoroughbreds almost let a rejuvenated substitute for West Tennessee knock them sky-high in their debut in Memphis. With the score tied 30-30 with a minute to play, Bland hit the hoop for a field goal, and a free throw was added, giving the Cutchinmen another victory. Back at the site where they won the S. I. A. A., the Racehorses galloped to a 49-28 romp over the Majors of Millsaps College. It was in this game that Gene Bland sprained an ankle that caused the Murraymen no little worry later in the season. Burdette led the scorers, but it was the sterling defensive work of Captain Carroll and Paul Fowler, playing in Bland's place, that kept the 'Breds in the victory column.

Murray ended up a successful road trip as they coasted to a 52-32 contest over Delta State. Murray took their time, amassed an early lead, and played with the substitutes in the game for a major part of the contest. Keith Bryant's seven points, and his brilliant relief work for McKeel, was the outstanding feature of an otherwise dull and uninteresting game.

Murray visited the Bulldogs of Union next, and despite the fact Bulldogs were undefeated, took them 43-32 in an excellent game. It was "Buck" Hurley who was

THE SPORTS EDITOR

the star of the game. His breaking under the basket for numerous shots put Murray in a more secure position. Murray took an early lead, and protected it throughout the contest.

Murray's return home was profitable to the entire squad as they had a "field night" at the expense of Middle Tennessee and battled the Blue Raiders into submission 46-17. Middle Tennessee got only four field goals during the entire contest. Murray's entire squad starred. There was no individual satellite.

Murray went down in defeat for the first time this season as they encountered Western, in Bowling Green, and fell before a smooth-clicking crew of Hilltoppers 45-36. Trailing by two points at the end of the half, Murray's team failed to function successfully after a ten-minute rest period, ruled legal by Referee Bowser Chest. Carroll and Graham, the "Heath Twins," looked best with six counters each. It was Saddler, Saddler, and Saddler for Western.

The 'Breds showed that they could come back, and they swept Union University before them in their next fray 41-25, with all of the Cutchinmen hitting the basket in one of the best exhibitions of the season. This was the second defeat of the Bulldogs, who had trounced University of Mississippi, then leading the Southeastern Conference.

Continuing their come-back, Western was the next victim of this group of S. I. A. A. crown seekers, and relinquished their leadership in K. I. A. C. and S. I. A. A. competition to the Bluebloods, as Murray completely outfought, outsmarted, outscored, outmaneuvered, and outplayed the Hilltoppers. McKeel was cool and held Saddler scoreless the first half. Captain Carroll outgeneraled the entire Western team, and maneuvered his team in a clever fashion. Floyd Burdette, "carrot-topped" Tennessean that he is, garnered sixteen points. Graham never played a finer floor game. Bland held the All-S. I. A. A. Max Reed to one field goal.

The Cutchinmen won their first international contest from Mexico City Y. M. C. A. 46-28. Murray took an early lead, and Coach Cutchin gracefully removed his regulars where the foreigners would have a better chance, and when he did, a lively contest ensued. Only two of the touring squad could speak English, so the outstanding man on the floor was none other than that silver-tongued orator and official, L. C. Litchfield.

Murray started on their final road trip of the season, and stopped at Cookeville, Tenn., long enough to hand the Golden Eagles of Tennessee Poly a stinging 35-25 defeat. Tech was hitting the comeback trail when the Murraymen hit them, but did not submit until a battle took place.

After an exciting first half, the Thoroughbreds moved ahead to win, going away from Middle Tennessee in Murfreesboro, 50-32. The eight men that Coach Cutchin used all broke into the scoring column, and Murray looked like S. I. A. A. champions during the last half of the fray. This ended the Thoroughbreds' regular season.

. . FRESHMAN

Freshman Players

Manager Carneal, Craddock, Gudawskus, Rocher, Conway, Irvan, Fesler, Mullins, Brandes, Coach Miller, Woodall, Spalding, Donoho, Heintzelman, Johnson, Smith, Downey, Morris, Gentry, Saunders, Wilson, Barclay, Van Horn, Markham, Ward, Albritten, Van Heuse, Lawson.



FRESHMAN FOOTBALL SEASON

Murray State College Frosh football team would up an undefeated season as they tied the best Western team ever to represent the Hill as a freshman aggregation 0-0. The Baby 'Bloods won their first game from Austin Peay Normal 7-0, and tied Middle Tennessee's Raiders 6-6 in the three contests in which they participated.

Much of the credit is due to the able coaching of John Miller, frosh mentor, while the excellent squad which he had to work with was another important factor.

In the Austin Peay game, the Murray team, fighting desperately against a more experienced aggregation, out-fought, out-smarted, and completely out-played the Tennesseans. The lone touchdown that the Murray team made was on a completed pass—from Ward to Smith for a 30-yard gain and a touchdown. Pete Godauskas's able toe supplied the extra point. Particularly outstanding in this game was the playing of John Lawson, West Virginia end, and Lacey Downey, dynamic guard. Others who covered themselves with both blood and glory for the Millermen were Ward, Rocher, Spaulding, Smith, Woodall, and Morris.

The Murray team tied the frosh of Middle Tennessee 6-6 in a battle royal in the Murray stadium. Murray's superb defense was the highlight of a drab encounter, colored only by the

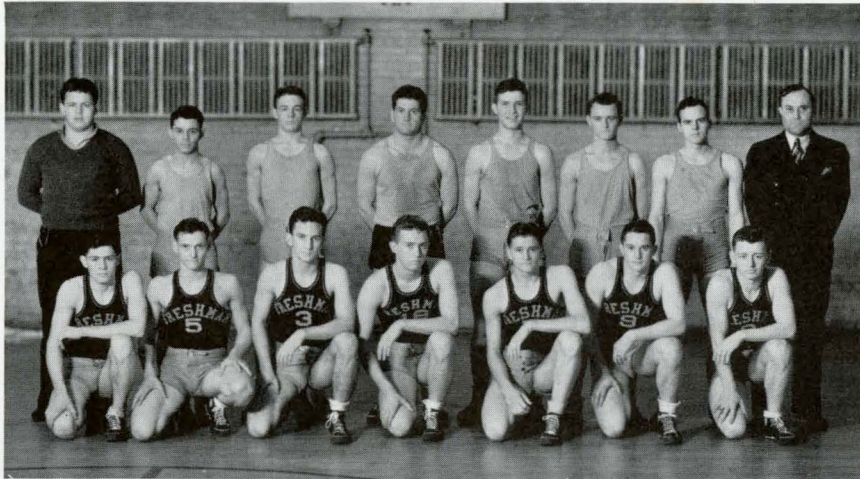
momentary lapse in both defenses long enough to enable both teams to score. Jack Lunsford's try for point for the Murrayians was wide, while the Middle Tennessee kick never reached the air due to the charging line of the Colts. Rocher and Spaulding with Lawson were Murray's chief offensive threats while the entire line was in for the honors on the defense.

Playing Western on their home grounds, and with a huge crowd watching the "two best Frosh teams in the S.I.A.A." battle, Coach John Miller's crew of gridders held a great Western team scoreless for the entire game, while they threatened at almost every turn.

Coming into their very own in the first period, the Baby 'Breds came within a few inches of scoring on a forward from Ward to Albritten. Again they threatened when Godauskas's field goal was missed because of a bad pass from center. The game was a constant nightmare for the Westerners, while Murray was doing everything but scoring. Lawson was injured in the first period, and that affected the Colts attack tremendously, but with the forwards playing such a magnificent game, the backs found numerous holes in the line.

Outstanding in the Murray line-up was Downey, Gudauskas, Morris, Lunsford, Albritton, Irvan, and Spaulding, who got off an eighty yard kick.

ATHLETICS . .



Freshman
Basketball
Squad

Left to right—Front row: Brown, Pennebaker, Love, Conway, Murray, Juitt. *Second row—Left to right:* Gunter, Manager Saunders, Noel, Smith, Johnson, Ford, Stevenson, Frosh Coach Miller.

FRESHMAN BASKETBALL SEASON

Murray's Freshman basketeers had an in and out season this year as they were winning 3 and losing 4 engagements against the strongest opposition that Coach John Miller could find for them.

The frosh defeated Western once, Union University and the Kevil Independents while they were losing to Western, Tennessee Tech, and two games to the Middle Tennessee freshmen.

This year, while not the most disappointing in frosh basketball history at Murray, could be classed among the worst. Conway and Watkins, both good centers, withdrew from college leaving the Miller men without a big man. Coach Miller was forced to shift Bill Carneal from forward to center to cover up the gap left by the departure of these two.

The frosh opened their season in great style by trouncing the Kevil Independents by a score of 39-16, as the whole squad of fifteen had a field night with Love, Carneal and Murray looking best.

Their second game was against the Junior Hill-toppers, and like true Thoroughbreds they took a hard-fought encounter from the Edd Stansbury coached team by the score of 29-28. Murray took a lead in the first half and managed to hold on to it throughout the game, but the Westerners threatened only seriously at the end of the contest. Pennebaker was outstanding for the Colts as a floorman, while Carneal and Love were flipping the spheroid through the hoop.

They lost their third game to the Middle Tennessee freshman 27-24 after leading for over three quarters of the game. In this game it was Hank Ford, former Tilghman Tornado flash, who led the Baby Bloods. The Murray team was weak and inconsistent throughout the contest, showing flashes of form only when they felt the urge to do so.

Playing on a foreign floor was new experience to the Murray freshmen, but they tasted defeat in a hand-to-hand struggle with the Western freshmen in Bowling Green. The score was 24-19. Murray was the star for Murray, while Carneal was contributing his bit, despite an injured ankle.

The freshmen showed their true form against the Bull Pups of Union University and emerged victorious 39-20 over them at Murray. Bill Carneal contributed the largest number of points to Murray's cause but it was the deliberate playing of Pennebaker and Murray who cinched the game.

On a road trip that resulted in two near brawls, the Murray team, with their coach at home, dropped a couple of games to the freshman teams of Tennessee Tech and Middle Tennessee. Love and Carneal looked best for the losers.

After the season had closed Coach Miller named Joe Spaulding, Robert Brown, Hank Ford, Elbert Pennebaker, Bill Carneal, Walter Murray, and Ralph Love as lettermen. Murray was elected honorary captain following the season with Carneal as alternate.

Student Life

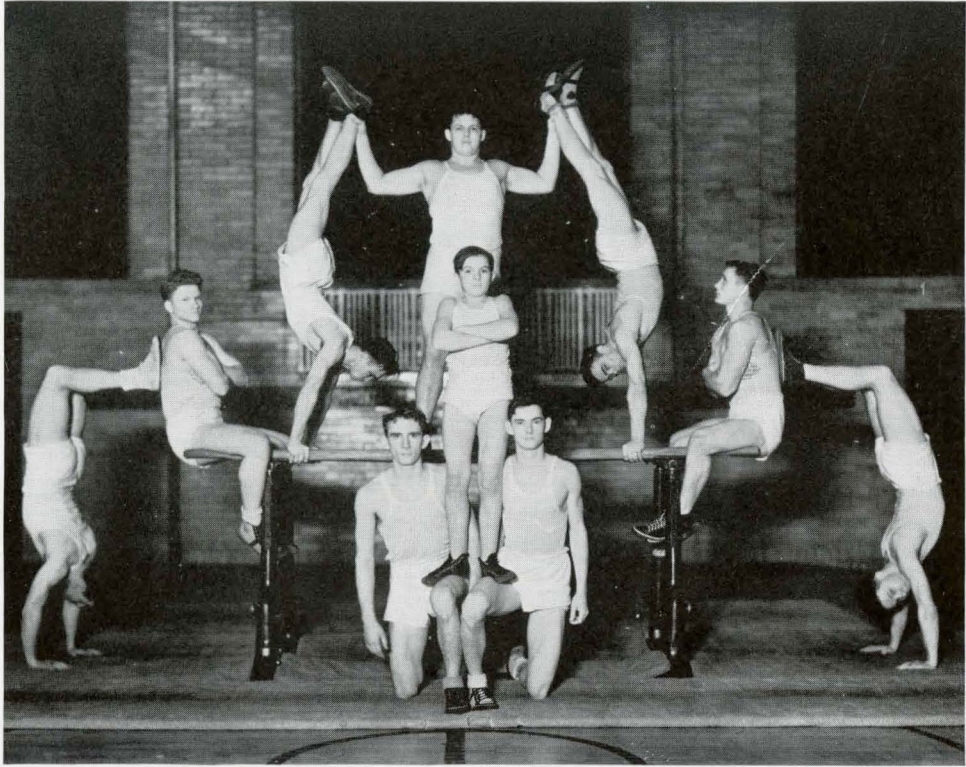


A kaleidoscope of varied interests interwoven with School Spirit . . . The essence of our College Campus.



AUDITORIUM . . CENTER OF SOCIAL ACTIVITIES



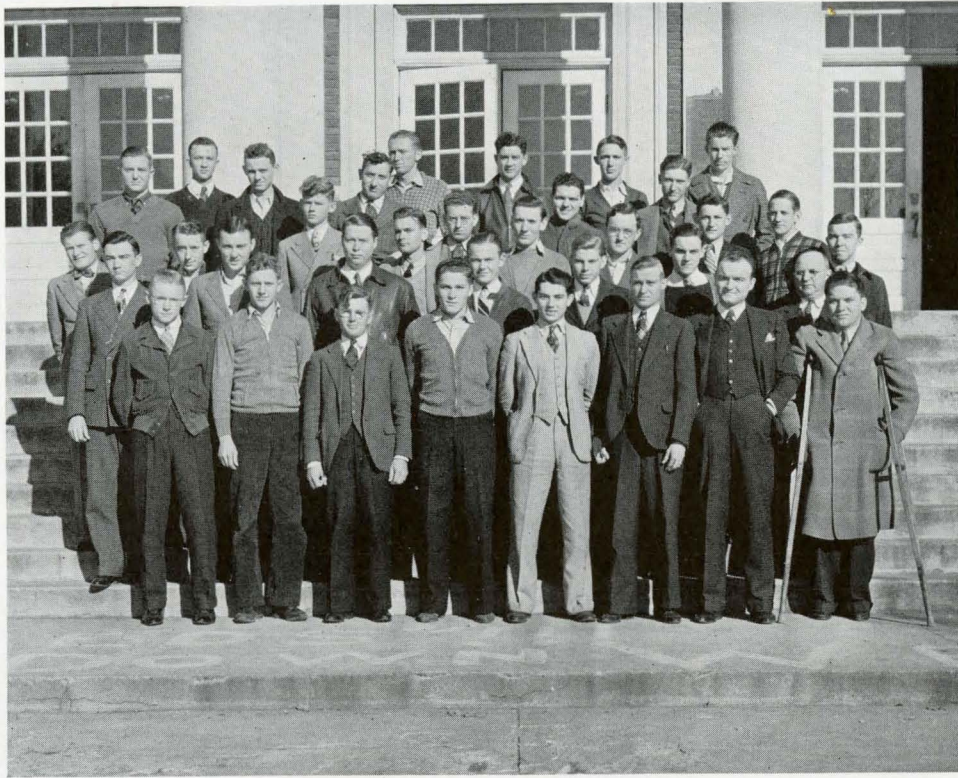


THE GYM CLUB

The Gym Club was organized for the purpose of getting those people who were interested in the field of Physical Education together, and giving them an opportunity for advancement both in organized and individual lines of Physical Education.

Physical Education makes for the development of the body, and always remembering the Greek adage, "A sound mind in a sound body." Thus this club and the field it represents are one of the main foundation stones of education, for what good is a brilliant mind without a healthy body.

So hand in hand with education itself, both physical and mental, is the Gym Club.



THE "AG" CLUB

MARTIN WILLIAMS	<i>President</i>
CARMON PARKS	<i>Vice-President</i>
TOM ATWELL	<i>Secretary-Treasurer</i>
DALTON WOODALL	<i>Reporter</i>
A. CARMAN	<i>Sponsor</i>

CHARTER MEMBERS

CARMON PARKS
 GEORGE HURLEY
 MAC WARD
 TOME ATWELL
 FRANK CRAWFORD
 J. C. WILDS
 HOWARD CAMPBELL
 WILBUR SMITH
 JOHN W. BOSTICK
 GASTON SHELTON
 LYNWOOD MORRIS
 FRANKLIN MAY
 BOYCE MCELYA
 EUGENE MURPHY

CHARLES WATSON
 MARTIN WILLIAMS
 BUFORD HURT
 ANDREW JENKINS
 B. AUSTIN
 LEE CALDWELL
 ELDRIDGE HILL
 BOURKE MANTLE
 JAMES BROWDER
 ROBERT BROWN
 J. T. RUDOLPH
 DAVID BOOKER
 CLAUDE WILSON
 THOMAS NEWMAN
 WILLIARD CARROLL

WILLARD CARNEAL
 VICTOR JARVIS
 TOM STEVENSON
 RALPH PATTERSON
 SAUNDERS CLAYTON
 HAROLD STOREY
 DALTON WOODALL
 W. H. WILLIAMS
 HOWARD PASCHALL
 D. A. COLSON
 JOE DUKE
 K. P. SALMON
 MAC BURROW
 ERNEST JONES

THE PEP CLUB

CASSIE GREGORY
President

ANITA HICKS HERNDON
Vice-President

DOROTHY ROWLAND
Secretary-Treasurer

Backing the team, win or lose, are the members of the Pep Club. They are the ones who day after day strive to instill spirit in the student body, and they let the team know that they and the rest of the student body are behind them one hundred per cent.

They are unmistakably on the campus always sitting together and dressed in their white uniforms during athletic contests.

Pep is the main aim of the club.



THE ENGLISH CLUB

The English Club has for its purpose the promulgation of a cultural consciousness in its members. Its organization is subject to readjustment at the beginning of each semester. Every member is urged to make a psychic contribution to the group.

The theme of the club for the fall semester of 1936-'37 was concerned with the South's contribution to literature. In keeping with the new course in World's Literature, recently inaugurated into the curriculum by the English Department, the theme for the spring semester is concerned with the influence of world's literature on contemporary thought and creations.

Dr. Herbert Drennon, head of the English Department, and L. J. Horton, head of the Journalism Department, are sponsors of the club.





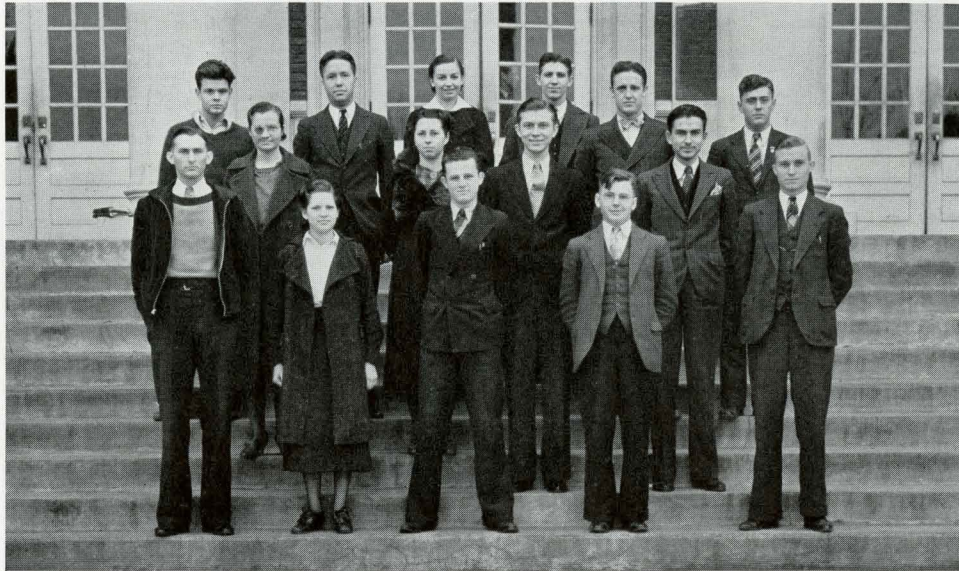
THE HOUSEHOLD ARTS CLUB

The Household Arts Club is composed of members of the Home Economics department who are securing Smith-Hughes degrees, also majors and minors in Home Economics. The department is under the supervision of Mrs. Preston Ordway, head of department, Miss Evelyn Slater and Miss Ruth Sexton.

The club attained the membership of the state and national Home Economics Association.

OFFICERS

<i>Fall</i>		<i>Spring</i>
ROSEMARY MILLER	<i>President</i>	ROSEMARY MILLER
MARY MOORE WINDSOR	<i>Vice President</i>	ANNA BESS CANNON
ELOISE PORTER	<i>Secretary</i>	MARY MOORE WINDSOR
ELIZABETH WILLIAMS	<i>Reporter</i>	ELIZABETH WILLIAMS



EUCLIDIAN MATHEMATICS CLUB

OFFICERS

Fall

H. L. HUGHES *President*
 ALTON THACKER *Vice-President*
 IMOGENE HENDON *Secretary-Treasurer*

Spring

H. L. HUGHES *President*
 MARTIN LEE WILLIAMS *Vice-President*
 MILDRED SWANN *Secretary-Treasurer*

MEMBERS

JOHN BRASWELL
 BROWN CLAYTON
 SAUNDERS CLAYTON
 WILLIAM CUTCHIN
 JANE FARR
 ELTIS FRANKLIN
 EVELYN RUTH GINGLES
 T. J. HARDIN
 CHESTER HAYES

IMOGENE HENDON
 CARNIE HICKS
 H. L. HUGHES
 HOYT JONES
 JOHN F. MCDARMENT
 GERALDINE MILSTEAD
 CASEY ORGAN
 OCIE MAE OWEN

DALE PARKER
 BEAUTON PASCHALL
 RALPH ROGERS
 MILDRED SWANN
 ALTON THACKER
 VERNON TREVATHAN
 MARTIN LEE WILLIAMS
 KINDRED WINSTON
 FLAVIUS WYMAN



LES SAVANTES

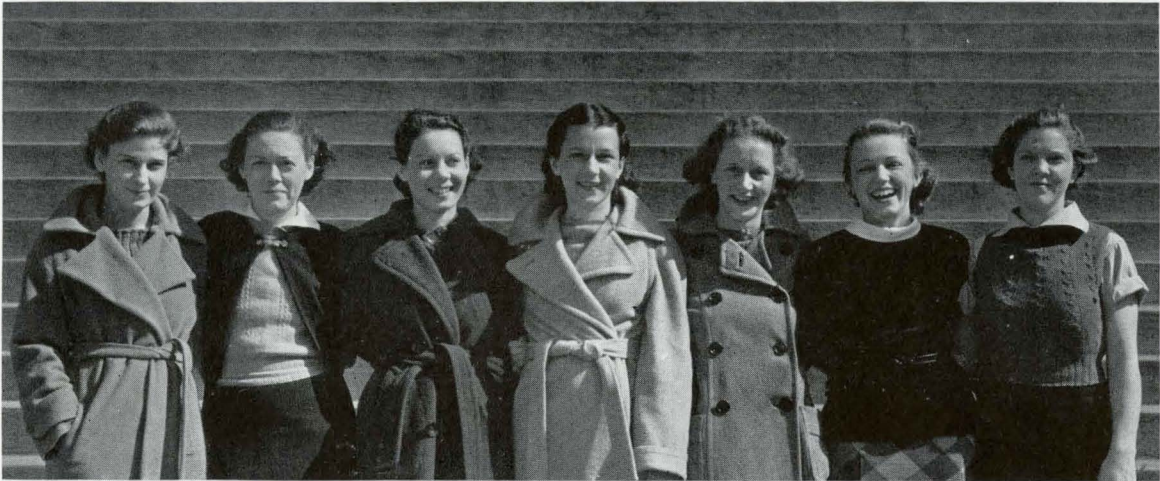
THE FRENCH CLUBS

There are two divisions of the French Club on the campus. *Les Camarades* is attained by taking elementary courses in French. This club, of course, has the most members.

Les Savantes is the honorary French Club, attained only through the completion of some of the more difficult courses in the department.

LES CAMARADES





FALL STUDENT COUNCIL

THE STUDENT COUNCIL

The Student Council is the governing agency of the women of the campus. This organization aids the Administration in formulating and carrying out rules for the welfare of the co-ed body. They have their own officers and make and carry out their own decisions.

SPRING STUDENT COUNCIL





COLLEGE ORCHESTRA

The College Orchestra has, as usual, been one of the outstanding features of the Murray Music Department. This year they have completed a year superior to any other in the advancement of this portion of the department.

The group has about sixty-five members and has the finest instrumentation of any organization of its kind in Kentucky. It is under the able leadership of the head of the department, Prof. Price Doyle.

Again this year the orchestra played at Nashville over the WSM radio hookup. They were again congratulated upon having the best organization of its kind to play in that city.

COLLEGE BAND

The pride of the College is the versatile College Band. Whether in drilling or upon the concert platform, they have no equal in the South. They number eighty in the marching band, and about ninety in the symphony band.

This year wherever the band went it was recognized for its sterling performance of difficult feats. An integral part of the organization, it more than holds up its portion of the fine Thoroughbred tradition. Its director is Prof. W. H. Fox.

• • • M U S I C



WOODWIND QUINTET

Personnel

HARWOOD TILTON *Flute*
ARTHUR COLLIANI *Oboe*
KEITH WHETSTONE *Horn*
PROFESSOR INGLIS *Director*
ALBERT SEAY *Bassoon*
EDWARD WEST *Clarinet*



FACULTY STRING QUARTET

Personnel

MR. FOX *First Violin*
MRS. FOX *Second Violin*
MR. MCGAVERN *Pianist*
MISS HINKLE *Cello*
MR. INGLIS *Viola*



DEPARTMENT

Murray State College is the only Teachers College to belong to the National Musical Association. This honor was attained by having a well rounded department and meeting the rigid requirements for entrance in the Association. Murray's Department attains such recognition because the men and women who are at the head of the department work diligently and have in their work a satisfaction that comes to those that have done their job well. Hats off to you of the Music Department.

THE CHOIR AND GLEE CLUB

The Student String Choir is another of the phases of music undertaken at Murray. This is a new organization and is progressing rapidly. The music played by this group lies in the popular and light and heavy classical fields. The Glee Club is under the direction of Prof. Putnam and sings various types of numbers. This year they have rendered splendid programs and their interpretations of numbers observing the Easter and Christmas seasons were magnificent. They are truly an asset to the Music Department.



MEN'S, WOMEN'S QUARTETS

Through the years the music of quartets has been the most popular with the laymen. Murray can boast of two fine organizations of this type. They are very active and sing in various portions of Kentucky and other states. They are also versatile and their repertoire contains many inspiring spirituals as well as many numbers of the ballad type.

WOMAN'S QUARTET

MARIAN SLOCUM
MARGARET TREVATHAN
CHARLES FARMER

Accompanist

MRS. FLORENCE JEWELL
LINDA SUE MCGEHEE



MEN'S QUARTET

CHARLES MILLER
CHARLES BAUGH
CHARLES FARMER

Accompanist

SAM WALLACE
JOHN TRAVIS





INTERNATIONAL RELATIONS CLUB

MEMBERS

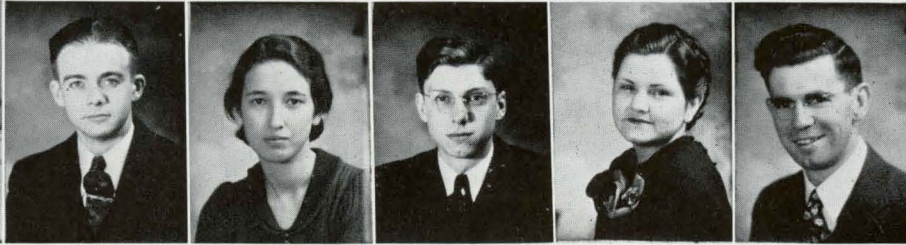
EDMUND CLARK
 HAROLD EDWARDS
 FRED AMIDOR
 MARTIN WILLIAMS
 FRANKLIN MAY
 ROBBIE NELL MEYERS
 MILDRED SWANN

WOODROW DILL
 H. L. HUGHES
 CHARLOTTE JORDAN
 MARY B. JONES
 VERNON TREVATHAN
 BOYD OWEN
 NELLIE MAE JONES
 HOYT JONES
 HOWARD SLAYDEN

IRENE NICKEL
 SALLIE LEMONS
 SETH FARLEY
 LUTHER GOHEEN
 REX LASHLEE
 L. D. MILLER
 KELLY SALMON

OFFICERS





The Vivace Club was organized for the purpose of giving individuals in the musical field an opportunity to exchange ideas and experiences. This club also leads to a better appreciation of music as an art. Besides catering purely to the musical it also caters to the social, and this club is one of the most prominent social clubs on the campus. The two sponsors of the club are Mr. Fox and Mr. McGavern. Much of the credit for the rapid advancement of the club must be given to these two wide-awake, all-around men.

OFFICERS

<i>Fall</i>		<i>Spring</i>
FLOYD McCLURE	<i>President</i>	PHIL HOWARD
HARWOOD TILTON	<i>Vice-President</i>	HARWOOD TILTON
LINDA SUE McGEHEE	<i>Secretary</i>	VIRGINIA LEE THOMPSON
PROF. W. FOX	<i>Sponsor</i>	PROF. MCGAVERN



ANNUAL EXHIBIT

PORTFOLIO CLUB

Furthering the cause of art at Murray is the Portfolio Club. This organization is made up of art majors and minors. One of the outstanding accomplishments of the club this year was the painting of the scenery for the Sock & Buskin Club play, "Outward Bound."

PRE-MED CLUB



FALL
 Pres. Winky Nichols
 V. Pres. U. Quatermous
 Sec. Ruth Adams

SPRING
 Pres. Hal McLean
 V. Pres. U. Quatermous
 Sec. C. McClure



The Pre-Med Club is an organization composed of those students interested in the pursuit of medicine. The primary aim of the club is to increase their professional knowledge and at the same time establish valuable social contacts with their colleagues.



OFFICERS

Fall

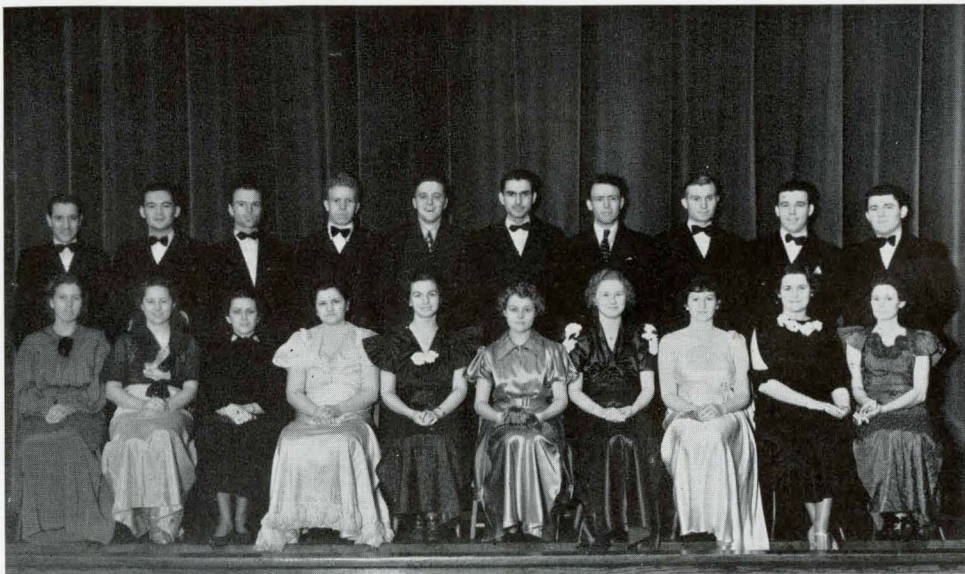
- A. THACKER *President*
 JANE MELUGIN *Vice-President*
 ANN HERRON *Sec. and Treas.*

Spring

- BILL CARRIER *President*
 LUTHER GOHEEN *Vice-President*
 JANE MELUGIN *Sec. and Treas.*

The Sock and Buskin Club was one of the outstanding campus organizations this past year. As example of the rigid requirements demanded in the dramatic field for membership, the club proudly presented "Outward Bound."

SOCK AND BUSKIN



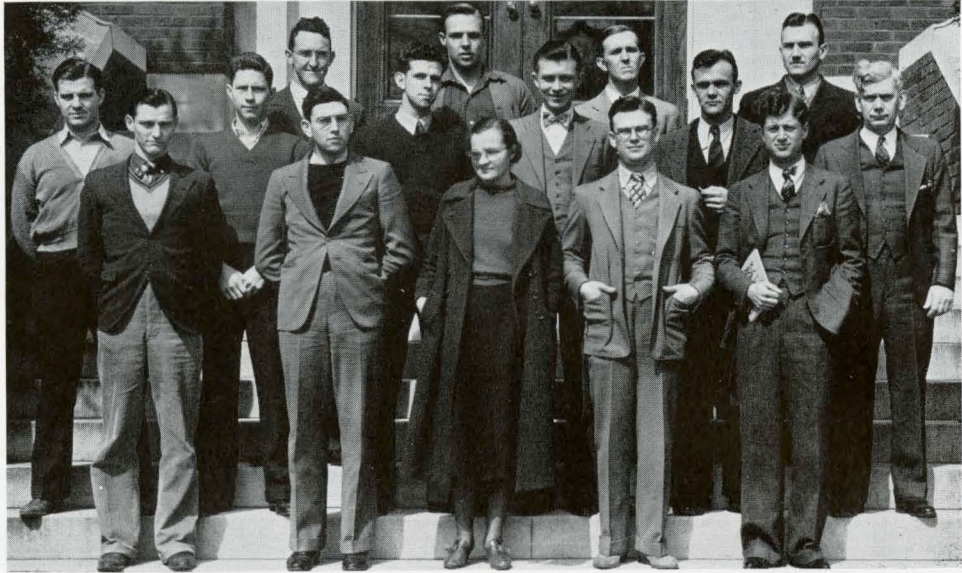
THE "M" MEN

KEITH BRYANT
LOUIS APPLGATE
JOHN MITCHELL
HUGH FINLEY
ROBERT DIXON NUNN
JOHN JASPER
DENNIS HORLANDER
CLAUDE MACRAVEN
GENE BLAND
JAMES TOLSON

LOUIS GRAHAM
ROBERT MILLER
JOSEPH HERNDON
JULIAN HENDERSON
HOMER WRIGHT
WILLIARD CARROLL
HERMAN LAND
FLOYD BURDETTE
CARROLL W. HARDIN
WILLIAM THOMPSON

BUSTER NEECE
EDWIN GUNTER
PAUL FOWLER
JOHN MILLER
WILLIAM COOK
CHARLES T. YARBROUGH
CHESTER HAYES
ELMER COCHRAN
ETHRIDGE MCKEEL





NATHAN B. STUBBLEFIELD PHYSICS CLUB

Taking its name from that famous founder of radio, the Physics Club at Murray is outstanding. Anyone who has taken, or is taking, a course in Physics is eligible for membership in the club. Many theories and much practical knowledge is to be attained by attending the club meetings.

Dr. Hire, head of the Physics Department at Murray, is the sponsor of the club. Mr. Yancey, also of the Physics Department, is co-sponsor of the club.

In
APPRECIATION



For the work of our advertisers who have helped to make our book a success. . . . Our Art Editor who has helped to make the book interesting. . . . Our Sponsor who has spent hours of his valuable time in giving us sage counsel and advice. . . . The staff who have worked so diligently in formulating the material to make up the book. . . . Our business manager who financed the book. . . . To the students of Murray State who have showed the true spirit of the Thoroughbreds. . . . Of the people of Western Kentucky, who back Murray in all its endeavors through thick and through thin; we take this opportunity to thank you.

Murray State Teachers College

MURRAY, KENTUCKY

Member

Kentucky Association of Colleges and Secondary Schools
American Association of Teachers College
Southern Association of Colleges and Secondary Schools
Teachers College Extension Association
National Association of Schools of Music
Southern Intercollegiate Athletic Association
Kentucky Intercollegiate Athletic Conference

SUMMER SESSION OPENS JUNE 14, 1937
FALL SEMESTER OPENS SEPTEMBER 20, 1937
SPRING SEMESTER OPENS JANUARY 31, 1938

All college departments will be in session throughout the school year. Ample training school facilities are provided for all students.

Degrees Conferred

Bachelor of Arts with or without certification, Bachelor of Science with or without certification, Bachelor of Science in Home Economics, Bachelor of Music Education with certification and Bachelor of Music.

Additions to the Physical Plant

The John Wesley Carr Health Building has been completed and adequately furnished. It consists of classrooms, offices, health service unit, gymnasiums, and swimming pool. The magnificent swimming pool is available for both men and women. A full program of physical education will be in operation at the beginning of the Summer Session.

The new Home Management House is the newest and one of the most beautiful home management houses in Kentucky. It is equipped to meet the most exacting requirements for the training of Home Economic teachers and is now in operation.

Women's and men's dormitories are new, modern and thoroughly equipped college homes. Room and board in each may be obtained at \$5.00 per week.

FOR CATALOGUE AND FULL INFORMATION
ADDRESS

JAMES H. RICHMOND, *President*
MURRAY, KENTUCKY

Murray State Teachers College

MURRAY, KENTUCKY

Member

Kentucky Association of Colleges and Secondary Schools
American Association of Teachers College
Southern Association of Colleges and Secondary Schools
Teachers College Extension Association
National Association of Schools of Music
Southern Intercollegiate Athletic Association
Kentucky Intercollegiate Athletic Conference

SUMMER SESSION OPENS JUNE 14, 1937
FALL SEMESTER OPENS SEPTEMBER 20, 1937
SPRING SEMESTER OPENS JANUARY 31, 1938

All college departments will be in session throughout the school year. Ample training school facilities are provided for all students.

Degrees Conferred

Bachelor of Arts with or without certification, Bachelor of Science with or without certification, Bachelor of Science in Home Economics, Bachelor of Music Education with certification and Bachelor of Music.

Additions to the Physical Plant

The John Wesley Carr Health Building has been completed and adequately furnished. It consists of classrooms, offices, health service unit, gymnasiums, and swimming pool. The magnificent swimming pool is available for both men and women. A full program of physical education will be in operation at the beginning of the Summer Session. The new Home Management House is the newest and one of the most beautiful home management houses in Kentucky. It is equipped to meet the most exacting requirements for the training of Home Economic teachers and is now in operation.

Women's and men's dormitories are new, modern and thoroughly equipped college homes. Room and board in each may be obtained at \$5.00 per week.

FOR CATALOGUE AND FULL INFORMATION
ADDRESS

JAMES H. RICHMOND, *President*
MURRAY, KENTUCKY

What Do You Mean—

"THAT FRIENDLY BANK"



Every bank has a personality. A character different from all other banks. It may be size. It may be tradition. It may be age. It may be a number of things or a combination of all of them.

At the Bank of Murray it is the spirit of friendly service. One senses the air of friendship when he walks in. The officers are not in secluded offices. Every officer you meet knows you by name and is glad to be of service.

We enjoy living up to our reputation as a friendly bank. Our officers are always available to the public. The Bank of Murray is a friendly bank. We should like for you to come in and see for yourself.



BANK OF MURRAY

Deposits Insured by Federal Deposit Insurance Corporation, Washington, D. C.

\$5,000 MAXIMUM INSURANCE FOR \$5,000
EACH DEPOSITOR

MAI DONNE
BEAUTY SHOPPE

*"We Cater to College
Trade"*

VENELA SEXTON, *Prop.*

Dale and Stubblefield

The Rexall Store

Headquarters for School Supplies
Whitman's Chocolates

Greeting Cards for all Occasions

Make Our Store Your Store While in Murray

THE LEDGER AND TIMES

MURRAY, KENTUCKY

"Kentucky's Most Progressive Weekly Newspaper"

A GOOD NEWSPAPER IN A GOOD COUNTY

Modernly Equipped Job Printers and Publishers

COMPLIMENTS

OF

THE CAPITOL THEATER

MURRAY, KY.



In Appreciation

Of Your Patronage, the Capitol Theater Will

Continue to Show Only the Best in Pictures

CLIFTON MORRIS, *Manager*

The J. H. Churchill
Funeral Home

*"The House of
Service"*

Murray, Ky.

Phone 7

CLOTHING
AND FURNISHINGS

FOR COLLEGE
STUDENTS

Graham and Jackson

FOR QUALITY JEWELRY



H. B. BAILEY

THE JEWELER

Murray, Kentucky

FRAZEE AND MELUGIN

Insurance Agents

FIRE • CASUALTY • BONDS



*It Does Make a Difference Who Writes Your
Insurance*



TELEPHONE 331

First Floor Gatlin Building

MURRAY, KENTUCKY

Kentucky-Tennessee
Light and Power Co.

"THE PUBLIC
BE PLEASED"

Is the Sincere Service Slogan of
This Company



MURRAY, KENTUCKY

COLLEGIATE
INN

*A Permanent School
Booster Throughout Every
Activity*

Catering to "Those Who Care"

PRIVATE DINING ROOM FOR
SPECIAL OCCASIONS



ALLBRITTEN

PITT

PEOPLES SAVINGS BANK

All deposits in the Peoples Savings Bank of Murray, Ky., are insured 100 per cent. That is to say that each person who has money deposited in the bank has 100 per cent protection on all the funds he has in the bank.

MEMBER FEDERAL DEPOSIT
INSURANCE CORPORATION

DEPOSITS GUARANTEED UP TO \$5,000

We Are Boosters For
Murray Thoroughbreds

MODERN EQUIPMENT
PROMPT DELIVERY

•

*See Our Dormitory
Solicitors*

•

MURRAY LAUNDRY

C. M. Pollard, Prop. Phone 303

**BANK OF
MARSHALL COUNTY**

BENTON, KY.

*A Good Bank in a
Good Town*



JOE L. PRICE, *President*

TULLUS BLACK, *Vice-President*

B. L. TREVATHAN, *Cashier*

J. E. CROSS, *Assistant Cashier*

BOB TREAS LONG, *Bookkeeper*

COMPLIMENTS

OF

T. O. TURNER'S STORE



MURRAY, KENTUCKY

MURRAY AUTO
PARTS COMPANY

"EVERYTHING FOR
THE AUTO"

Thos. Banks

Thos. Redden

THE
Superior Laundry and
Cleaners

Delivery Service

Phone 44

Murray, Ky.

"We Intend To Be a Step Ahead"

Johnson-Fain Appliance
Company

R. C. A., PHILCO
RADIOS

Electric Stoves and Frigidaires

MURRAY, KENTUCKY

R. H. BARTON

Clothing and Furnishings

MAYFIELD, KENTUCKY

South Side of the Square

JOE LOOKOFSKY

MEN'S WEAR AND SHOE
REBUILDING

East Side Square

MAYFIELD, KENTUCKY

Sunburst Grade A
Pasteurized
Milk

Butter and Buttermilk



MURRAY
MILK PRODUCTS
COMPANY

Dr. Pepper
GOOD FOR LIFE!
5¢



MAYFIELD, KY.

We Feature
STYLE MART CLOTHES

C. B. HARGROVE &
COMPANY

MAYFIELD, KY.

C. B. Hargrove

Geo. Brand

Drink

Coca-Cola

In Bottles

H. AND H.
PRODUCE COMPANY

Incorporated

FOR

FANCY FRUITS AND
SERVICE

Call 82 or 90

224 South Second Street

PADUCAH, KENTUCKY



**Only Portable with
TOUCH CONTROL***

ROYAL

Standard and Portable Typewriters
Since 1914

HOWARD D. HAPPY COMPANY

Visit Our Nearest Office

MAYFIELD

HOPKINSVILLE

PADUCAH

Students Dine In Colonial
Room

SUNDAYS, 50c

NATIONAL HOTEL

ELIZABETH DUMAS, *Manager*

COMPLIMENTS

of

**E. S. DIUGUID AND
SON**

Murray, Kentucky

Riley Grocery Store

"THE" STORE OF THE
COLLEGE ADDITION

*"Always the Best in Quality, and
As Low in Price"*

KANSAS CITY MEATS

Phone 356-J

Delivery Service

Wallis Drug

SCHOOL SUPPLIES

SODAS, PERFUMES

GREETING CARDS

MURRAY LUMBER COMPANY

Incorporated

DEPOT STREET

We Plan For You Any Type of Building

25 YEARS EXPERIENCE

EVERYTHING TO BUILD ANYTHING

SCOTT LASSITER
HARDWARE

Quality First

BOONE
CLEANERS tel. 234

*Complete Cleaning and
Dyeing Service*

PROMPT DELIVERY

"Ice Cream Is the Nation's
Finest Food"

Mayfield
Dairy Products Co.

MAYFIELD, KENTUCKY

When in Mayfield Visit

Johnson's Drug Store

and

Johnson's Soda
Fountain

WE WILL WELCOME YOU

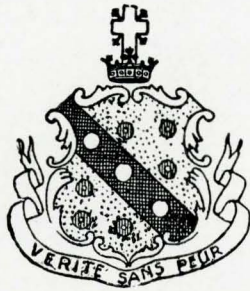
CALL FOR YUKON'S BEST
AND
QUEEN OF THE WEST
FLOURS

Highest Quality

COVINGTON BROS. AND COMPANY

Wholesale Grocers

MURRAY, KENTUCKY



HALL HOTEL COMPANY

JOHN WINSLOW
Manager

THE HUT

JUST ACROSS THE CAMPUS

EVERYTHING GOOD
TO EAT

Gene Hughes Ruth Hughes

WILSON AND LITTLE

Drugs

WHEN IN TOWN MAKE OUR STORE YOUR
HEADQUARTERS

North Side Court Square

Mayfield, Kentucky

THE BROOKS SHOPPE

SPECIALTY APPAREL FOR WOMEN AND
MISSES

123 West Broadway

Mayfield, Kentucky

STUDENTS, You are Always
Welcome at the Tea Room

We invite you to enjoy the best fountain service in town.



AMBROSE TEA ROOM

College Terminal for C. Ray Bus
Lines

SHROATS MEAT MARKET

QUALITY MEATS

Phone 214

PROMPT SERVICE

MURRAY, KENTUCKY

C. RAY BUS LINES

Operating De Luxe Bus Service

OUR AMBROSE TEA ROOM STATION IS HANDY FOR
PASSENGERS TO AND FROM THE COLLEGE
CONNECTIONS WITH GREYHOUND LINES AT MAYFIELD,
PADUCAH AND HOPKINSVILLE

COLLEGE STUDENTS ARE ALWAYS
WELCOME

AT

CORN AUSTIN AND CO.

"Where Men Trade"

THIS SPACE DONATED
BY
THE KEYS HOUSTON
CLINIC HOSPITAL

•
E. B. HOUSTON, M.D.
C. H. JONES, M.D.
A. D. BUTTERWORTH, M.D.
HUGH L. HOUSTON, M.D.
HAL E. HOUSTON, M.D.

COMPLIMENTS
OF
W. T. SLEDD AND
COMPANY

•
MEN AND BOY'S
WEAR

R. H. FALWELL AND COMPANY
FIRE AND LIFE
INSURANCE

We Will Bond You

INSURE IN SURE INSURANCE

Telephone 50

Peoples Saving Bank Building

Murray, Kentucky

ASK YOUR GROCER FOR
RANDOLPH SPECIAL HARVEST DREAM
OR
LYNN GROVE BEST FLOUR



MURRAY WHOLESALE GROCERY CO.
Distributors

QUALITY MERCHANDISING

FOR MORE THAN HALF A
CENTURY



1880

RYAN'S

1937

DRY GOODS

West Kentucky's Oldest Department Store

World's Largest Publishers

THIS BOOK DESIGNED AND PRINTED BY

Benson

PRINTING COMPANY ☆ NASHVILLE

of College Annuares

"Jahn & Ollier Again"

• Artists and
Makers of Fine
Printing Plates for
Black or Color

The Largest
College Annual
Designers and
Engravers' in
America . . .

Jahn & Ollier Engraving Co.

*817 W. Washington Blvd.
Chicago, Illinois*

There is no substitute for quality

Autographs

